

2017 Connecticut Higher Education System Data and Trends Report

- **Enrollment**
- **Admissions**
- **Graduation Rates**
- **Tuition & Fees**
- **Endowment**
- **State Funding**
- **Instructional Expenses**
- **Faculty and Staffing**
- **Student Financial Aid**

450 Columbus Blvd., Hartford, CT 06103-1841

860-947-1801

www.ctohe.org

2017 Connecticut Higher Education Trends

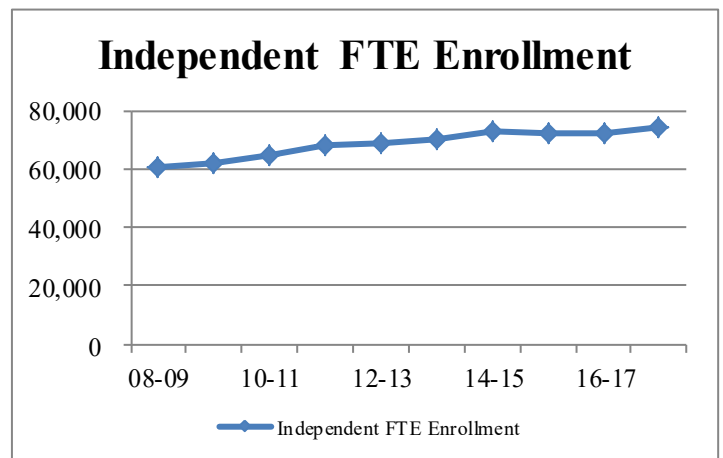
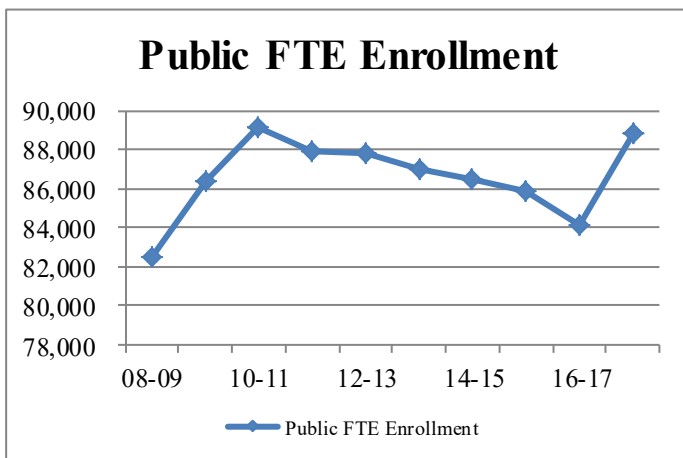
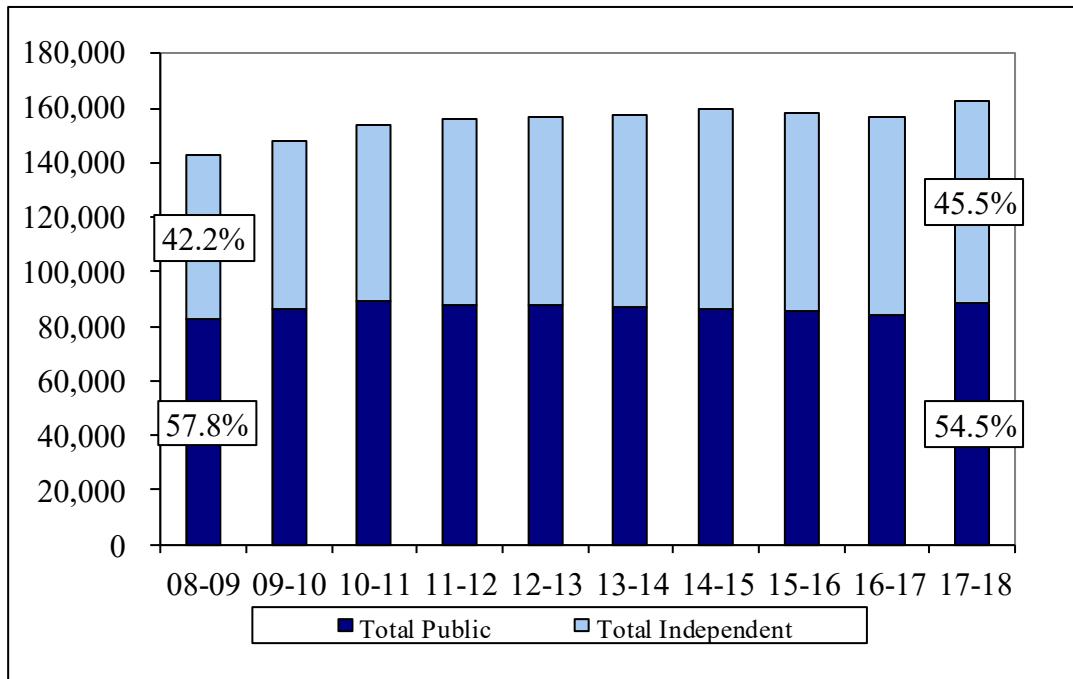
Enrollment	1-13
Admissions	14-15
Graduation Rates	16-19
Tuition and Fees	20-23
Endowment	24-26
State Funding	27-29
Instructional Expenses	30-34
Faculty and Staffing	35-38
Student Financial Aid	39-43
Appendix I - X	44-54

This report, produced by the Division of Finance and Administration of the Office of Higher Education, is an annual publication required by Public Act 12-10.

For questions, please contact Keith Norton or Scott Ciecko, Division of Finance and Administration, (860) 947-1842.

Enrollment

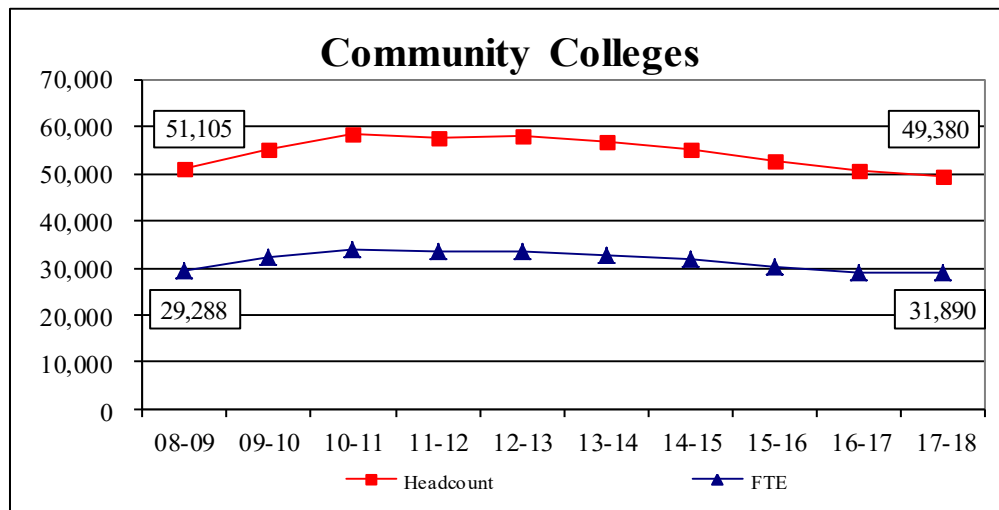
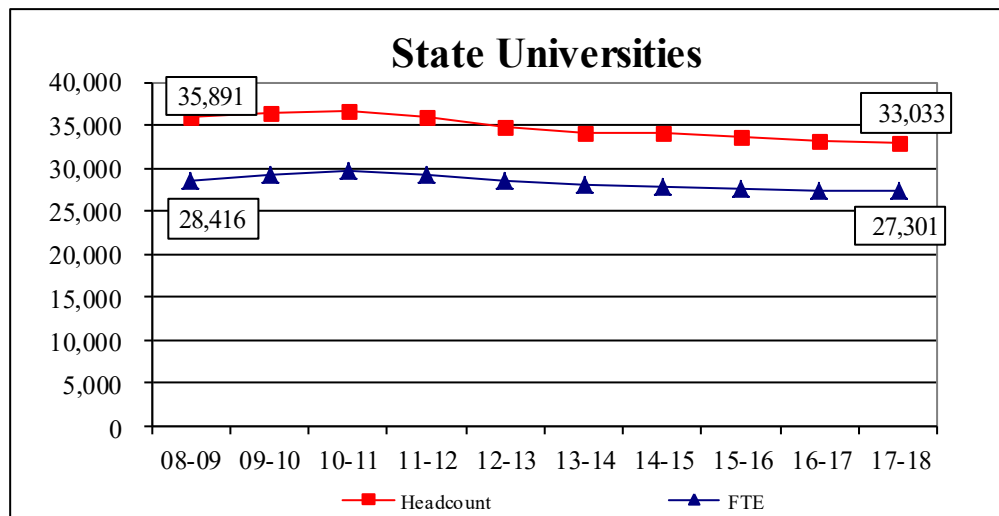
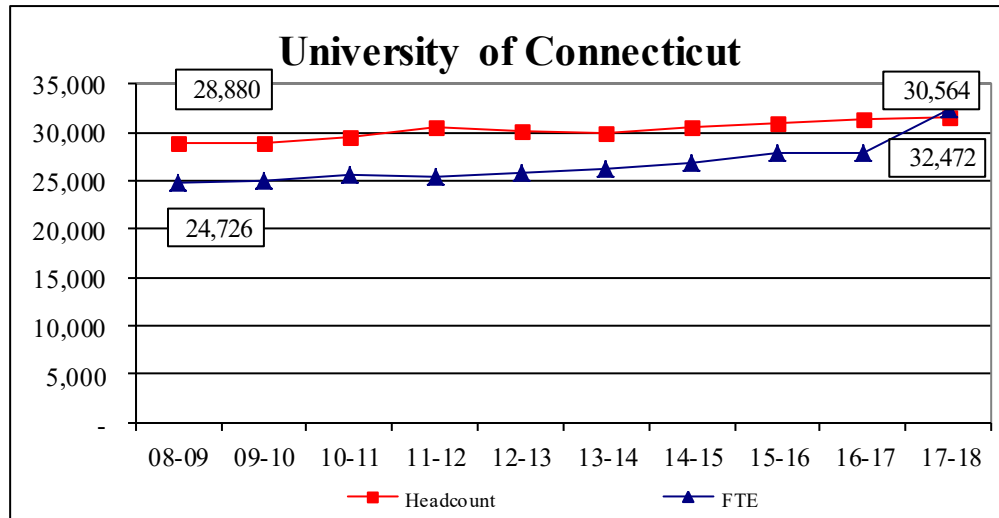
Connecticut Higher Education
Fall FTE Enrollment 2008-2017



- Although still under 50% of total FTE Enrollment as a percent of total students enrolled, enrollment at independent institutions continues to increase as a percent of total students enrolled at Connecticut institutions.
- Since 2008, the percent share of Independent FTE Enrollment has grown by 3.2%.
- Public Institution - An educational institution whose programs and activities are operated by publicly elected or appointed school officials and which is supported primarily by public funds.
- Independent Institution - An educational institution controlled by a private individual(s) or by a nongovernmental agency, usually supported primarily by other than public funds, and operated by other than publicly elected or appointed officials. These institutions may be either for-profit or not-for-profit.
- Source: IPEDS Fall Enrollment Surveys
- Note: FTE enrollment for this chart is calculated based on credit hours divided by 15 credit hours for full-time and 12 credit hours for part-time.

Enrollment

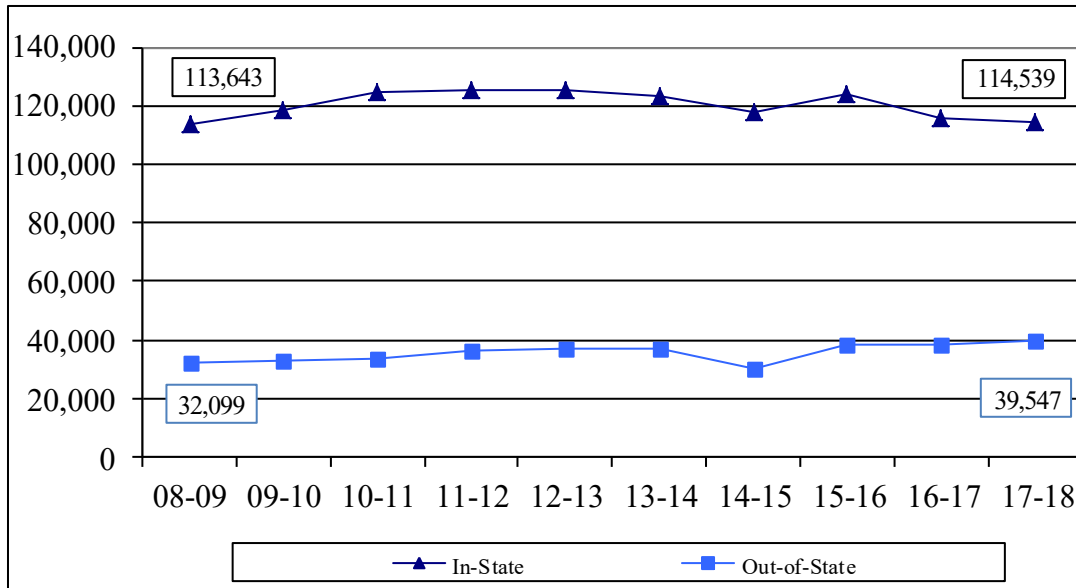
Public Fall FTE Enrollment 2008-2017



• Source: IPEDS Fall Enrollment Surveys

Enrollment

Residence Status of Connecticut Public and Independent Undergraduate Students



Residence Status

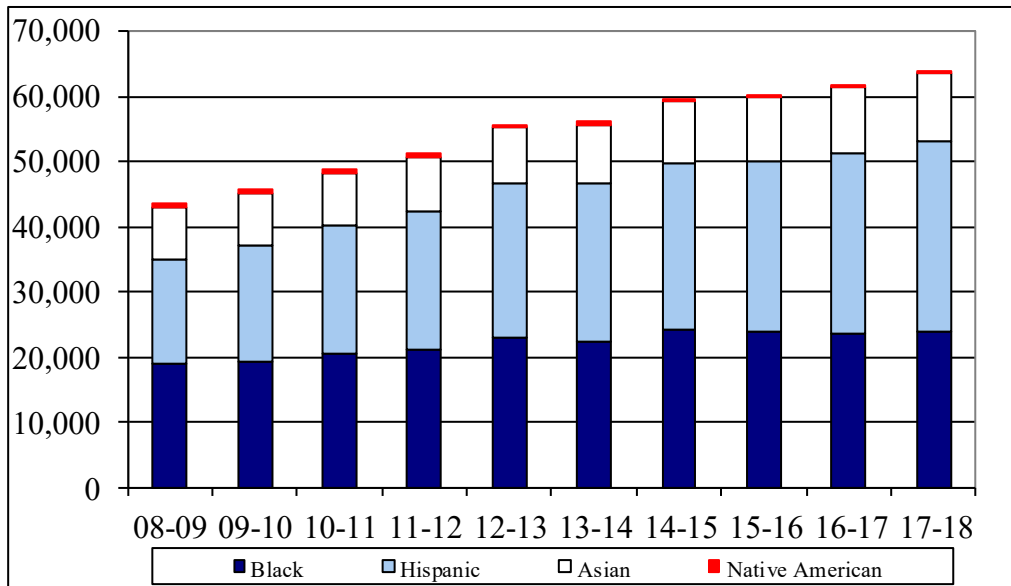
	<u>2008-09</u>	<u>2017-18</u>	<u>Percent Change</u>
In-State	113,643	114,539	4.5%
Out-of-State	32,099	39,547	26.6%
In-State/Out-of-State %	78/22	74/26	

- The overall percentage of out-of-state students attending all Connecticut institutions has grown 3.6% since 2008-09.
- The Connecticut State Universities and Community Colleges have maintained high level in-state enrollment by serving 93.8% and 98.5% in-state undergraduates respectively.

• Source: IPEDS Fall Enrollment Surveys

Enrollment

**Minority Enrollment
Connecticut Public and Independent Institutions
Fall 2008-2017**



Minority Headcount Enrollment

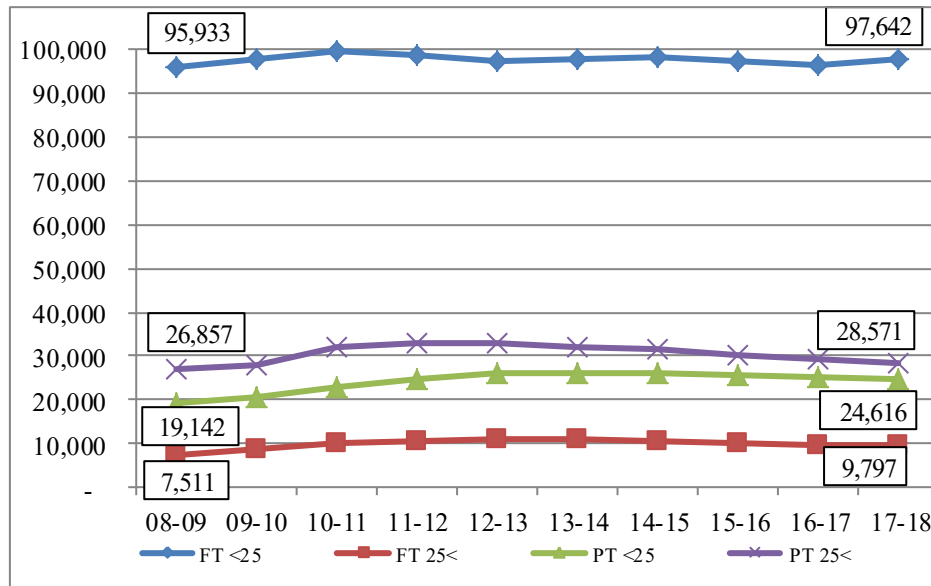
	<u>2008-09</u>	<u>%</u>	<u>2017-18</u>	<u>%</u>	<u>2005 Census</u>	<u>2015 Census</u>
Black	18,947	10.2%	24,001	12.1%	8.8%	9.6%
Hispanic	16,147	8.7%	29,217	14.7%	10.9%	14.7%
Asian	7,819	4.2%	10,348	5.2%	3.2%	4.2%
Native American	576	0.3%	461	0.2%	0.2%	0.1%
Total Minority	43,489	23.3%	70,008	35.2%	24.3%	30.5%
Total Enrollment	186,532		198,704			
Unknown Race	17,334	9.3%	9,572	4.8%		

- Data as reported shows that the minority population in Connecticut institutions of higher education has increased from 23.3% to 35.2% in the last ten years. This increase is greater than that of the general population when comparing 2005 and 2015 census estimates.
- Census data shows that the minority population in Connecticut has increased from 24.3% to 30.5% from 2005 to 2015.

- *Source: IPEDS Fall Enrollment Surveys. U.S. Census Bureau (American FactFinder) estimates based on 2005 and 2015 Census estimates and interim updates.*

Enrollment

**Student Age Summary
Connecticut Public and Independent Institutions
Fall 2008-2017**



Student Age Summary - Undergraduate

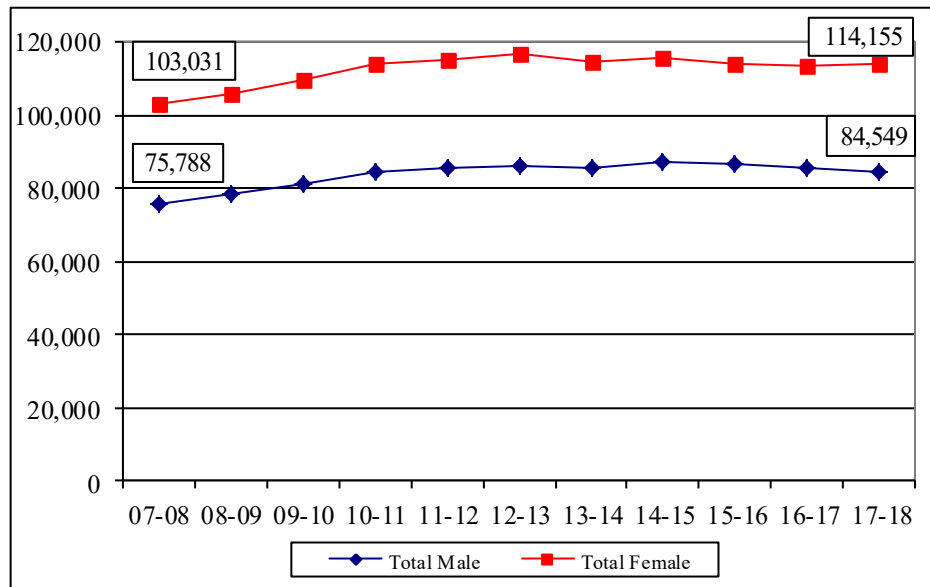
	<u>2008-09</u>	<u>% of Total</u>	<u>2017-18</u>	<u>% of Total</u>
Under 25 Full-Time	95,933	64.2%	97,642	60.8%
Over 25 Full-Time	7,511	5.0%	9,797	6.1%
Under 25 Part-Time	19,142	12.8%	24,616	15.3%
Over 25 Part-Time	26,857	18.0%	28,571	17.8%

- As a percentage of total student population, the over 25 full-time segment has seen the greatest growth, while the under 25 full-time segment has seen the least growth.
- In the last ten years, the number of students under 25 has increased by 6.2%, while the number of over 25 has increased by 11.6%.
- The number of full-time students across all ages has increased 3.9%, while the number of part-time students across all ages has increased 15.6%.
- Part-time - Undergraduate: A student enrolled for less than 12 semester credits each term. Graduate: A student enrolled for less than 9 semester credits each term.
- Full-time - Undergraduate: A student enrolled for more than 12 semester credits each term. Graduate: A student enrolled for more than 9 semester credits each term.

• Source: IPEDS Fall Enrollment Surveys

Enrollment

**Enrollment by Gender
Connecticut Public and Independent Institutions
Fall 2008-2017**



Enrollment by Gender

	<u>Men</u>	<u>Women</u>	<u>Percent Men</u>	<u>Percent Women</u>
2008-09	78,676	105,868	42.6%	57.4%
2009-10	81,556	109,577	42.7%	57.3%
2010-11	84,843	113,923	42.6%	57.4%
2011-12	85,410	115,396	42.5%	57.5%
2012-13	86,083	116,792	42.4%	57.6%
2013-14	85,800	114,714	42.8%	57.2%
2014-15	87,163	115,950	42.9%	57.1%
2015-16	86,613	113,995	43.2%	56.8%
2016-17	85,620	113,441	43.0%	57.0%
2017-18	84,549	114,155	42.6%	57.4%

- The percentage breakdown by gender of students enrolled at Connecticut higher education institutions shows the difference in male versus female enrollment over the last 10 years has remained unchanged.

- *Source: IPEDS Fall Enrollment Surveys*

Enrollment

Enrollment by Gender, Age and Status

Under 25 Full-Time

	<u>Under 25 Full-Time</u>	<u>Percent</u>	<u>Under 25 Full-Time</u>	<u>Percent</u>
2008-09	47,130	45.7%	56,090	54.3%
2009-10	48,084	45.7%	57,153	54.3%
2010-11	48,963	45.7%	58,191	54.3%
2011-12	48,509	45.7%	57,670	54.3%
2012-13	47,892	45.7%	57,017	54.3%
2013-14	47,918	45.6%	57,132	54.4%
2014-15	48,064	45.9%	56,656	54.1%
2015-16	49,093	45.8%	58,001	54.2%
2016-17	48,628	45.5%	58,226	54.5%
2017-18	48,238	45.1%	58,614	54.9%

Over 25 Full-Time

	<u>Over 25 Full-Time</u>	<u>Percent</u>	<u>Over 25 Full-Time</u>	<u>Percent</u>
2008-09	8,514	44.9%	10,438	55.1%
2009-10	9,279	45.3%	11,196	54.7%
2010-11	10,006	45.2%	12,108	54.8%
2011-12	10,451	45.3%	12,620	54.7%
2012-13	10,578	45.4%	12,706	54.6%
2013-14	10,953	46.6%	12,555	53.4%
2014-15	10,624	46.8%	12,101	53.2%
2015-16	10,885	47.2%	12,197	52.8%
2016-17	10,816	46.9%	12,254	53.1%
2017-18	10,653	45.8%	12,584	54.2%

- Full-time gender breakdown shows male enrollment slightly higher than male enrollment in the overall gender breakdown.

- *Source: IPEDS Fall Enrollment Surveys*

Enrollment

Enrollment by Gender, Age and Status

Under 25 Part-Time

	<u>Under 25 Full-Time</u>	<u>Percent</u>	<u>Under 25 Full-Time</u>	<u>Percent</u>
2008-09	9,441	43.5%	12,283	56.5%
2009-10	10,071	43.4%	13,154	56.6%
2010-11	10,786	42.7%	14,476	57.3%
2011-12	11,530	42.6%	15,547	57.4%
2012-13	12,165	43.0%	16,110	57.0%
2013-14	12,291	43.6%	15,880	56.4%
2014-15	11,307	43.8%	14,480	56.2%
2015-16	12,259	44.3%	15,399	55.7%
2016-17	11,900	43.8%	15,277	56.2%
2017-18	11,413	42.8%	15,255	57.2%

Over 25 Part-Time

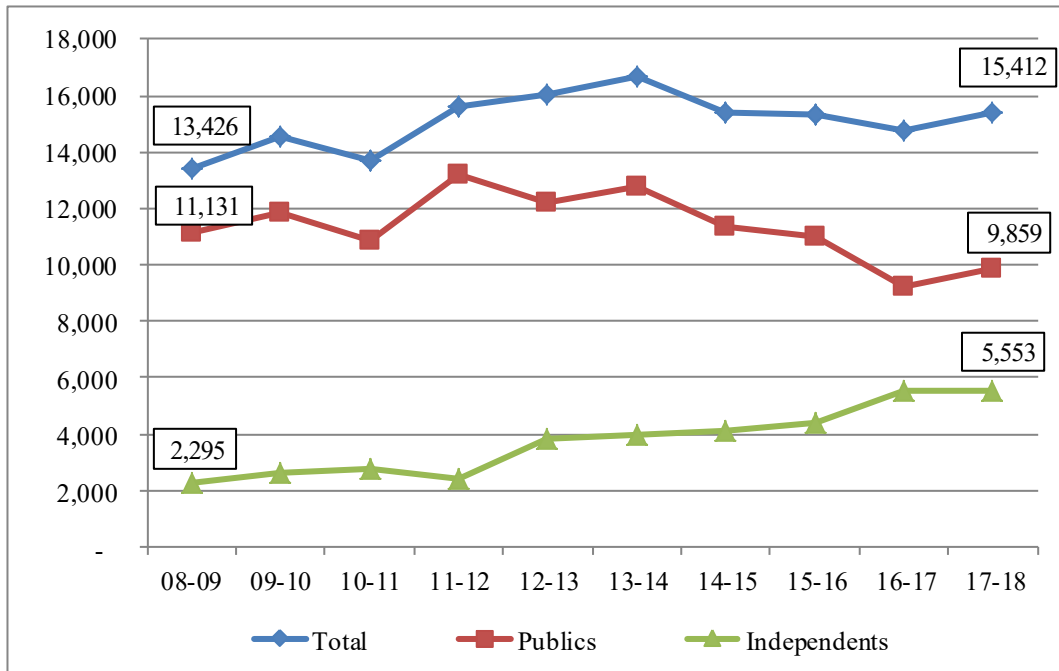
	<u>Over 25 Full-Time</u>	<u>Percent</u>	<u>Over 25 Full-Time</u>	<u>Percent</u>
2008-09	13,591	33.4%	27,057	66.6%
2009-10	14,122	33.5%	28,074	66.5%
2010-11	15,482	33.6%	30,625	66.4%
2011-12	15,715	33.6%	31,005	66.4%
2012-13	15,449	33.3%	30,959	66.7%
2013-14	15,141	33.5%	30,035	66.5%
2014-15	14,232	33.3%	28,472	66.7%
2015-16	14,375	33.6%	28,396	66.4%
2016-17	14,276	34.0%	27,684	66.0%
2017-18	13,837	33.5%	27,416	66.5%

- Part-time gender breakdown shows female enrollment significantly higher than female enrollment in the overall gender breakdown.

- *Source: IPEDS Fall Enrollment Surveys*

Enrollment

**Undergraduate Transfers Into
Connecticut Public and Independent Institutions
Fall 2008-2017**



Undergraduate Transfer - Into

	<u>2008-09</u>	<u>2017-18</u>	<u>% Change</u>
Total	13,426	15,412	14.8%
Public	11,131	9,859	-11.4%
Independent	2,295	5,553	142.0%
Public/Independent %	83/17	64/36	

- Over the 10 year period, students transferring into college as undergraduates do so mainly at the public institutions. However, the gap between public and independent has steadily narrowed in recent years.
- Transfers-into overall, have grown 14.8% in the last 10 years. The independent undergrad transfer population has grown by 142.0% while the public undergrad transfer population has declined by -11.4%.
- *Source: IPEDS Fall Enrollment Surveys*
- *Note: IPEDS defines a Transfer as a student entering the reporting institution for the first time but known to have previously attended a postsecondary institution as the same level (e.g. undergraduate, graduate). This includes new students enrolled in the fall term who transferred into the institution the prior summer term. The student may transfer with or without credit.*

Enrollment

Percent of Population that Transfer-In

	<u>Transfers in Fall 2017</u>	<u>Fall 2017 Enrollment CT Students</u>	<u>% of Transfers</u>
UConn	1,076	31,590	3.4%
Central	1,039	11,880	8.7%
Eastern	471	5,282	8.9%
Southern	971	10,207	9.5%
Western	572	5,664	10.1%
CSU Sub-total	3,053	33,033	9.2%
Asnuntuck	219	1,870	11.7%
Capital	446	3,282	13.6%
Gateway	921	7,015	13.1%
Housatonic	506	5,138	9.8%
Manchester	829	6,321	13.1%
Middlesex	362	2,682	13.5%
Naugatuck Valley	528	6,373	8.3%
Northwestern CT	95	1,295	7.3%
Norwalk	480	5,836	8.2%
Quinebaug Valley	136	1,524	8.9%
Three Rivers	421	4,187	10.1%
Tunxis	375	3,857	9.7%
CCC Sub-Total	5,318	49,380	10.8%
Charter Oak	354	1,500	23.6%

- *Source: IPEDS Fall Enrollment Surveys*

Enrollment

Percent of Population that Transfer-In

<u>Independent Institutions</u>	<u>Transfers in Fall 2017</u>	<u>Fall 2017 Enrollment CT Students</u>	<u>% of Transfers</u>
National Non-Profit Independents			
Connecticut College	24	1,817	1.3%
Trinity College	18	2,282	0.8%
Wesleyan University	52	3,213	1.6%
Yale University	26	12,974	0.2%
National Sub-total	120	20,286	0.6%
Regional Non-Profit Independents			
Albertus Magnus College	98	1,464	6.7%
Fairfield University	52	5,192	1.0%
Goodwin College	657	3,410	19.3%
Holy Apostles College and Seminary	42	525	8.0%
Mitchell College	27	694	3.9%
Quinnipiac University	196	10,200	1.9%
Sacred Heart University	123	8,543	1.4%
St. Vincent's College	67	485	13.8%
University of Bridgeport	304	5,434	5.6%
University of Hartford	234	6,561	3.6%
University of New Haven	237	6,984	3.4%
University of Saint Joseph	285	2,405	11.9%
Regional Non-Profit Sub-total	2,322	52,127	4.5%
Regional For-Profit Independents			
Lincoln College of New England	70	465	15.1%
Paier College of Art	40	79	50.6%
Post University	2,997	8,534	35.1%
Regional For-Profit Sub-total	3,107	9,078	34.2%

• Source: IPEDS Fall Enrollment Surveys

Enrollment

Transfer-In Source—Fall 2017

<u>UConn</u>	<u>Transfers – In</u>	<u>Percent of Total</u>	<u>COSC</u>	<u>Transfers – In</u>	<u>Percent of Total</u>
CSU	136	12.0%	UConn	6	1.7%
CCC	399	35.2%	CSU	28	7.9%
COSC	0	0.0%	CCC	163	46.0%
USCG	0	0.0%	USCG	0	0.0%
National Non-Profit Independents	3	0.3%	National Non-Profit Independents	1	0.3%
Regional Non-Profit Independents	53	4.7%	Regional Non-Profit Independents	27	7.6%
Regional For-Profit Independents	5	0.4%	Regional For-Profit Independents	3	0.8%
Out-of-State Institutions	538	47.4%	Out-of-State Institutions	122	34.5%
Previous Institution Unknown	0	0.0%	Previous Institution Unknown	4	1.1%
Total UConn	1,134	100.0%	Total COCS	354	100.0%

<u>CSU</u>	<u>Transfers – In</u>	<u>Percent of Total</u>	<u>CCC</u>	<u>Transfers – In</u>	<u>Percent of Total</u>
UConn	187	6.1%	UConn	395	7.4%
Other CSU's	83	2.7%	CSU	811	15.2%
CCC	2,101	68.8%	Other CCC's	2,066	38.8%
COSC	22	0.7%	COSC	15	0.3%
USCG	0	0.0%	USCG	0	0.0%
National Non-Profit Independents	18	0.6%	National Non-Profit Independents	10	0.2%
Regional Non-Profit Independents	207	6.8%	Regional Non-Profit Independents	561	10.5%
Regional For-Profit Independents	377	12.3%	Regional For-Profit Independents	49	0.9%
Out-of-State Institutions	6	0.2%	Out-of-State Institutions	1,332	25.0%
Previous Institution Unknown	52	1.7%	Previous Institution Unknown	79	1.5%
Total CSU	3,053	100.0%	Total CCC	5,318	100.0%

- The primary source for transfer students at Connecticut's public institutions in the Fall of 2017 was the Connecticut Community Colleges followed closely by Out-of-State institutions.

- *Source: IPEDS Fall Enrollment Surveys*

Enrollment

Transfer-In Source—Fall 2017

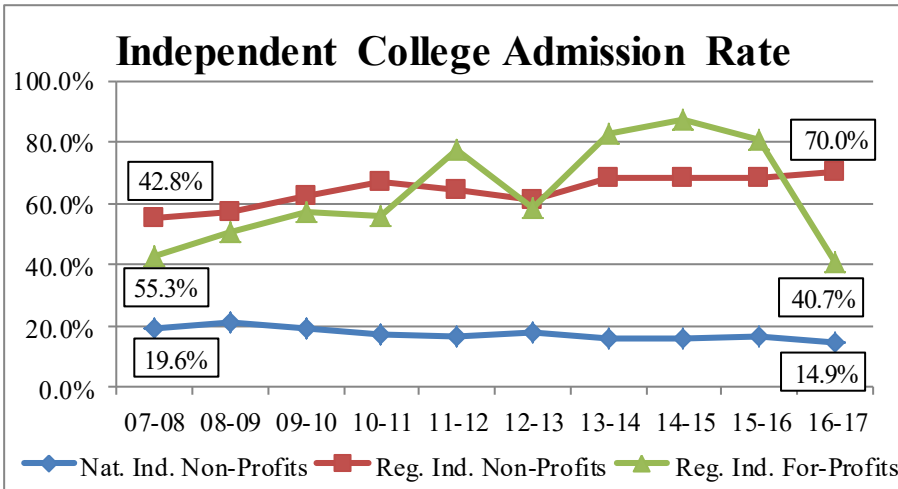
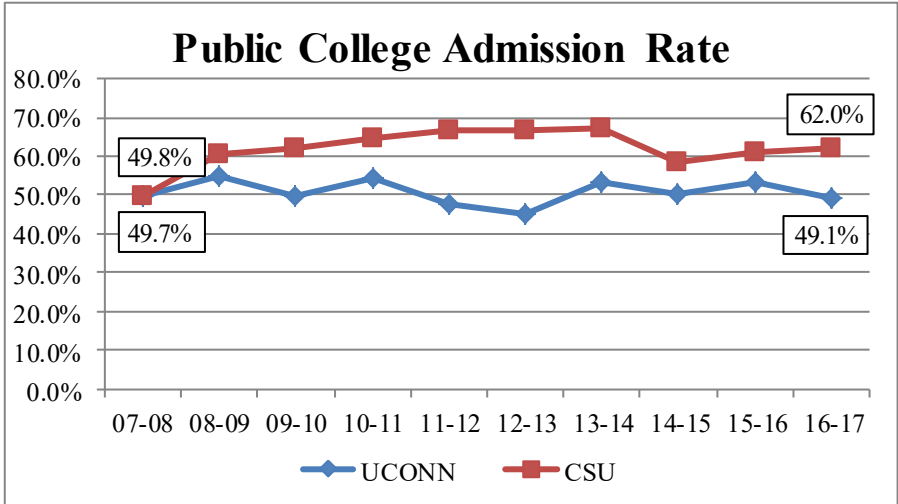
<u>National Non-Profit Independent</u>	<u>Transfers – In</u>	<u>Percent of Total</u>	<u>Regional Non-Profit Independent</u>	<u>Transfers – In</u>	<u>Percent of Total</u>
UConn	2	1.7%	UConn	78	3.3%
CSU	0	0.0%	CSU	150	6.4%
CCC	9	7.5%	CCC	963	41.2%
COSC	0	0.0%	COSC	7	0.3%
USCG	0	0.0%	USCG	1	0.0%
National Non-Profit Independents	1	0.8%	National Non-Profit Independents	3	0.1%
Regional Non-Profit Independents	4	3.3%	Regional Non-Profit Independents	139	5.9%
Regional For-Profit Independents	0	0.0%	Regional For-Profit Independents	19	0.8%
Out-of-State Institutions	102	85.0%	Out-of-State Institutions	844	36.1%
Previous Institution Unknown	2	1.7%	Previous Institution Unknown	135	5.8%
Total National Non-Profit	120	100.0%	Total Regional Non-Profit	2,339	100.0%

<u>Regional For-Profit Independent</u>	<u>Transfers – In</u>	<u>Percent of Total</u>
UConn	69	2.2%
CSU	271	8.7%
CCC	953	30.7%
COSC	5	0.2%
USCG	0	0.0%
National Non-Profit Independents	0	0.0%
Regional Non-Profit Independents	101	3.3%
Regional For-Profit Independents	15	0.5%
Out-of-State Institutions	1,692	54.5%
Previous Institution Unknown	1	0.0%
Total Regional For-Profit	3,107	100.0%

- The primary source for transfer students at the National Non-Profit Independent institutions in the Fall of 2017 was the Out-of-State institutions. The primary sources for the Regional Non-Profit and For-Profit institutions was the Out-of-State institutions and Connecticut Community Colleges.

- *Source: IPEDS Fall Enrollment Surveys*

Admissions



	<u>2007-08</u>	<u>2016-17</u>	<u>Percent Change</u>
UConn	49.7%	49.1%	-0.6%
CSU	49.8%	62.0%	12.2%
Natn'l Ind. Non-Profit	19.6%	14.9%	-4.7%
Regn'l Ind. Non-Profit	55.3%	70.0%	12.7%
Regn'l Ind. For-Profit	42.8%	40.7%	-2.1%

- Information on admission rates at Community Colleges are not quantifiable due to open enrollment policies.
- Data for regional for-profit independent institutions consists of one school.
- National independent non-profit institutions became slightly more selective while regional independent non-profit institutions grew admission rates by 14.9% since 2007-08.
- CSU (Connecticut State Universities) admissions grew by 12.2% since 2007-08. UConn remained flat.

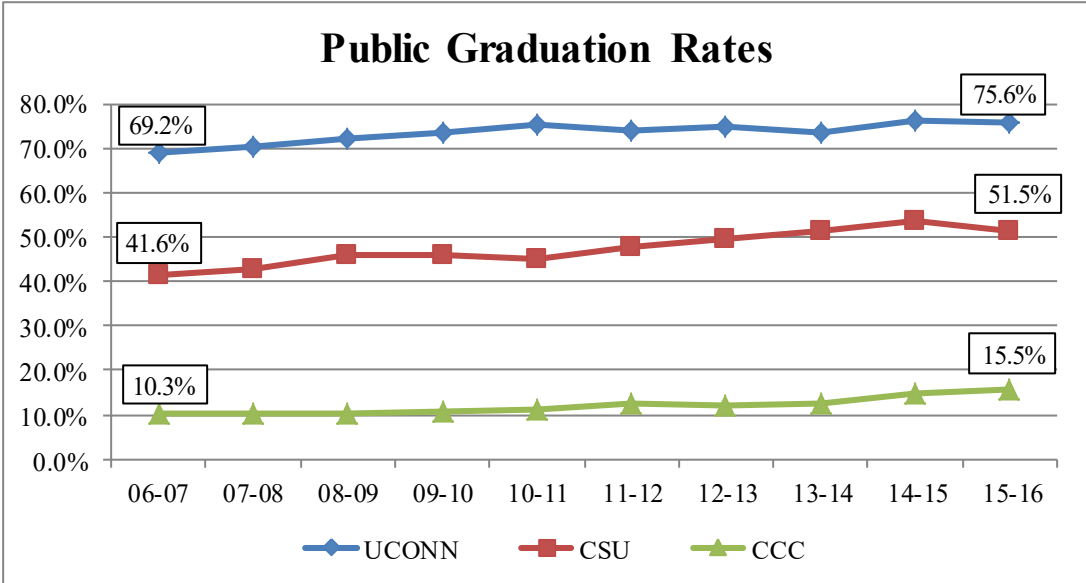
• Source: IPEDS Data Center

Admissions

	<u>2007-08</u>			<u>2016-17</u>		
	<u>Applicants</u>	<u>Admitted</u>	<u>Admittance Rate</u>	<u>Applicants</u>	<u>Admitted</u>	<u>Admittance Rate</u>
UConn	22,355	11,102	49.7%	37,063	18,198	49.1%
Central	5,665	3,480	61.4%	7,810	4,687	60.0%
Eastern	3,815	2,239	58.7%	5,863	3,395	57.9%
Southern	6,178	1,806	29.2%	8,625	5,479	63.5%
Western	3,831	2,181	56.9%	5,484	3,665	66.8%
CSU Sub-total	19,489	9,706	49.9%	27,782	17,226	62.0%
National Non-Profit Independents						
Connecticut College	4,278	1,624	38.0%	5,879	2,065	35.1%
Trinity College	5,950	2,037	34.2%	6,073	2,062	34.0%
Wesleyan University	7,242	2,012	27.8%	11,928	2,129	17.8%
Yale University	21,101	1,878	8.9%	31,445	1,988	6.3%
National Sub-total	38,571	7,551	19.6%	55,325	8,244	14.9%
Regional Non-Profit Independents						
Albertus Magnus College	576	496	86.1%	677	342	51.3%
Fairfield University	8,557	4,686	54.8%	11,055	6,795	61.5%
Mitchell College	N/R	N/R	-	908	795	87.6%
Quinnipiac University	12,060	5,681	47.1%	23,492	17,957	76.4%
Sacred Heart University	6,217	3,878	62.4%	10,017	5,731	57.2%
St. Vincent's College	828	243	29.3%	61	43	70.5%
University of Bridgeport	4,311	2,454	56.9%	6,969	4,027	57.8%
University of Hartford	11,726	6,317	53.9%	15,526	11,168	71.9%
University of New Haven	3,153	2,315	73.4%	10,720	8,633	80.5%
University of Saint Joseph	821	599	73.0%	742	650	87.6%
Regional Sub-total	48,249	26,669	55.3%	80,157	56,141	70.0%
Regional For-Profit Independents						
Lincoln College of New England	N/R	N/R	-	N/R	N/R	-
Post University	1,291	553	42.8%	4,507	1,835	40.7%

- *Source: IPEDS Data Center*
- *Not included are the Community Colleges who have open enrollment.*
- *N/R - Not Reported*
- *Note: Admitted Student - IPEDS defines as applicants that have been granted an official offer to enroll in a post secondary institution.*

Graduation Rates within 150% of Normal Time - Public Institutions

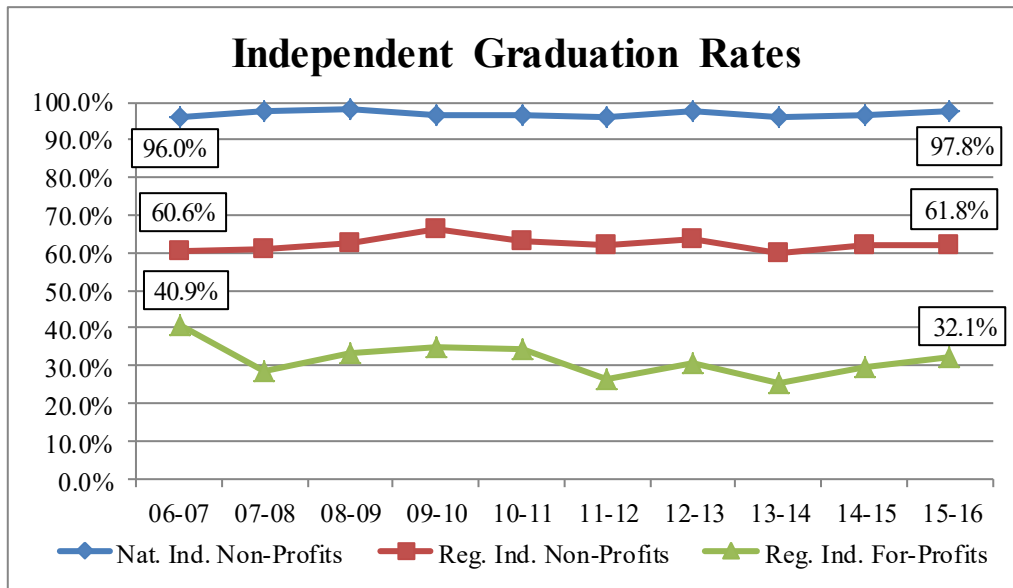


	<u>2006-07</u>	<u>2015-16</u>	<u>Percent Change</u>
UConn	69.2%	75.6%	6.4%
CSU	41.6%	51.5%	9.8%
CCC	10.3%	15.5%	5.2%

- Per federal financial aid guidelines, 150% of normal time is equivalent to 6 years for a 4 year degree and 3 years for a 2 year degree.
- Data from public institutions reflect a steady increase in the number of students who graduate within 150% of normal time.
- The Connecticut State University System has seen greater gains and has achieved a higher graduation rate (at 150% of normal time) than many independent non-profit institutions over the last ten years.
- CCC - Connecticut Community Colleges.

- *Source: IPEDS Data Center*
- *Awards and Degrees are conferred between July 1 and June 30 of a given year.*
- *Note: Rates are based on cohorts entering an institution as full-time, first-time, degree seeking undergraduate students.*

Graduation Rates within 150% of Normal Time - Independent Institutions



	<u>2006-07</u>	<u>2015-16</u>	<u>Percent Change</u>
Nat'n'l Ind. Non-Profit	96.0%	97.8%	1.8%
Regn'l Ind. Non-Profit	60.6%	61.8%	0.9%
Regn'l Ind. For-Profit	40.9%	32.1%	-8.8%

- Per federal financial aid guidelines, 150% of normal time is equivalent to 6 years for a 4 year degree and 3 years for a 2 year degree.
- National Independent non-profit and Regional Independent non-profit institutions have maintained steady graduation rates over the last 10 years.
- Regional Independent for-profit institutions have declined by nearly 9% over the last 10 years.

- *Source: IPEDS Data Center*
- *Awards and Degrees are conferred between July 1 and June 30 of a given year.*
- *Note: Rates are based on cohorts entering an institution as full-time, first-time, degree seeking undergraduate students.*

Graduation Rates within 150% of Normal Time

	<u>2006-07</u>			<u>2015-16</u>		
	<u>Completers</u>	<u>Cohort</u>	<u>Grad. Rate</u>	<u>Completers</u>	<u>Cohort</u>	<u>Grad. Rate</u>
UConn	2,648	3,826	69.2%	3,423	4,529	75.6%
Central	559	1,261	44.3%	719	1,340	53.7%
Eastern	400	828	48.3%	497	912	54.5%
Southern	538	1,429	37.6%	642	1,248	51.4%
Western	317	841	37.7%	445	975	45.6%
CSU Sub-total	1,814	4,359	41.6%	2,303	4,475	51.5%
Asnuntuck	34	143	25.8%	95	228	41.7%
Capital	28	276	10.2%	19	312	6.1%
Gateway	58	565	7.3%	101	835	12.1%
Housatonic	53	544	10.4%	57	574	9.9%
Manchester	95	833	12.5%	166	958	17.3%
Middlesex	26	295	11.6%	68	346	19.7%
Naugatuck Valley	58	799	7.9%	153	949	16.1%
Northwestern CT	22	172	10.3%	31	192	16.1%
Norwalk	42	493	14.9%	78	646	12.1%
Quinebaug Valley	35	202	17.0%	66	279	23.7%
Three Rivers	56	444	14.2%	84	550	15.3%
Tunxis	29	424	8.7%	74	526	14.1%
CCC Sub-Total	536	5,190	10.3%	992	6,395	15.5%

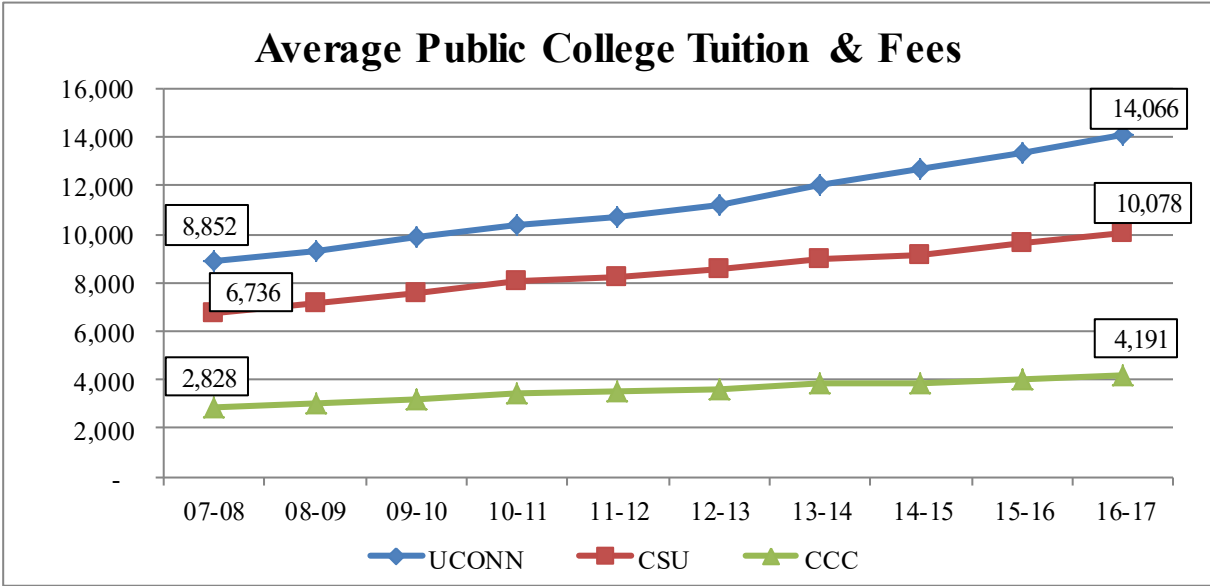
- *Source: IPEDS Data Center*
- *Awards and Degrees are conferred between July 1 and June 30 of a given year.*

Graduation Rates within 150% of Normal Time

<u>Independent Institutions</u>	<u>2006-07</u>			<u>2015-16</u>		
	<u>Completers</u>	<u>Cohort</u>	<u>Grad. Rate</u>	<u>Completers</u>	<u>Cohort</u>	<u>Grad. Rate</u>
National Non-Profit Independents						
Connecticut College	383	472	81.1%	410	488	84.0%
Trinity College	425	491	86.6%	502	591	84.9%
Wesleyan University	666	722	92.2%	684	748	91.4%
Yale University	1,241	1,293	96.0%	1,313	1,343	97.8%
National Sub-total	2,715	2,978	91.2%	2,909	3,170	91.8%
Regional Non-Profit Independents						
Albertus Magnus College	62	109	56.9%	84	160	52.5%
Fairfield University	670	831	80.6%	757	921	82.2%
Goodwin College	N/R	N/R	-	85	289	29.4%
Holy Apostles College and Seminary	N/R	N/R	-	1	2	50.0%
Mitchell College	99	278	35.6%	100	228	43.9%
Quinnipiac University	850	1,175	72.3%	1,282	1,637	78.3%
Sacred Heart University	503	766	65.7%	589	974	60.5%
St. Vincent's College	N/R	N/R	-	3	4	75.0%
University of Bridgeport	75	175	42.9%	174	594	29.3%
University of Hartford	759	1,398	54.3%	785	1,365	57.5%
University of New Haven	183	503	36.4%	574	1,005	57.1%
University of Saint Joseph	90	165	54.4%	145	229	63.3%
Regional Non-Profit Sub-total	3,291	5,400	60.9%	4,578	7,408	61.8%
Regional For-Profit Independents						
Lincoln College of New England	41	131	31.3%	58	308	18.8%
Paier College of Art	44	58	75.9%	10	20	50.0%
Post University	63	173	36.4%	208	532	39.1%
Regional For-Profit Sub-total	148	362	40.9%	276	860	32.1%

- Source: IPEDS Data Center
- Awards and Degrees are conferred between July 1 and June 30 of a given year.

Tuition and Fees - Public Institutions

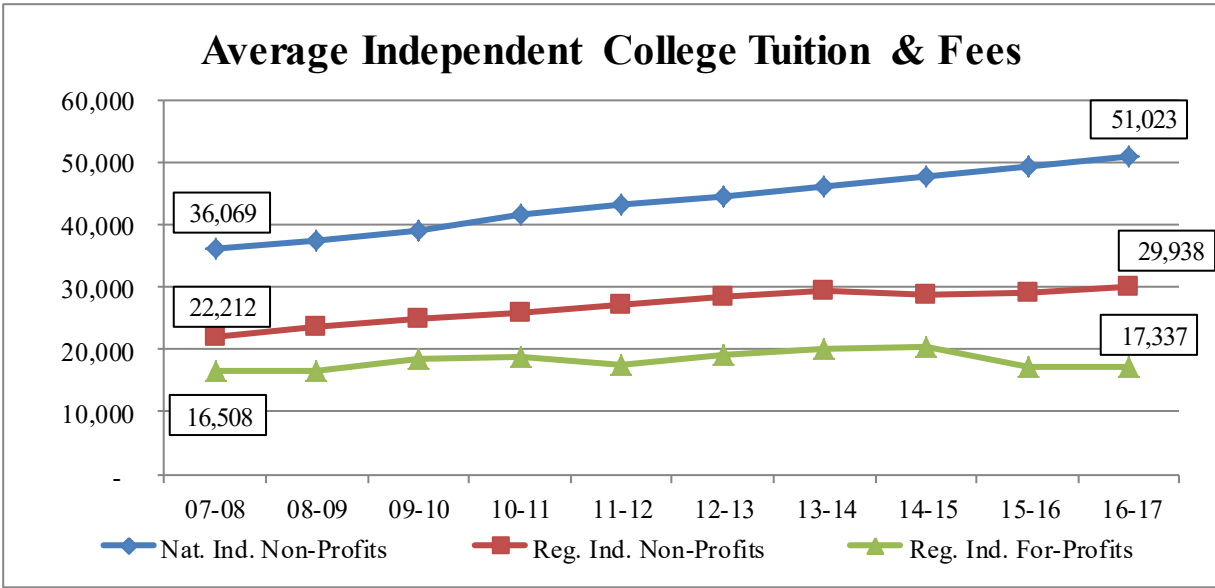


	<u>2007-08</u>	<u>2016-17</u>	<u>Percent Change</u>
UConn	8,852	14,066	58.9%
CSU	6,736	10,078	49.6%
CCC	2,828	4,191	48.2%

- As a percent, average tuition and fees as public institutions has risen at a higher rate than the independent non-profit institutions. UConn has risen the most since 2007-08 by 58.9%.
- Room and board charges are not included, however, that information is available in the appendix.
- In-state rates are provided for public institutions. Amounts reflect only tuition and required fees for full-time students.

- Source: IPEDS Data Center for in-state tuition rates and required fees.

Tuition and Fees - Independent Institutions



	<u>2007-08</u>	<u>2016-17</u>	<u>Percent Change</u>
Natn'l Ind. Non-Profit	36,069	51,023	41.5%
Regn'l Ind. Non-Profit	22,212	29,938	33.7%
Regn'l Ind. For-Profit	16,508	17,337	0.9%

- Since 2007-08, Regional Independent non-profit institutions have risen by 33.7% while the National Independent non-profits have risen by 41.5%
- Amounts reflect only tuition and required fees for full-time students. Room and board charges are not included, however, that information is available in the appendix.

- *Source: IPEDS Data Center for in-state tuition rates and required fees.*

Tuition and Fees

	<u>2007-08</u>			<u>2016-17</u>		
	<u>Total Tuition & Required Fees</u>	<u>Room & Board</u>	<u>Total</u>	<u>Total Tuition & Required Fees</u>	<u>Room & Board</u>	<u>Total</u>
UConn	\$8,852	\$8,850	\$17,702	\$14,066	\$12,436	\$26,502
Central	\$6,734	\$8,350	\$15,084	\$9,741	\$11,462	\$21,203
Eastern	\$6,961	\$8,377	\$15,338	\$10,500	\$12,559	\$23,059
Southern	\$6,623	\$8,432	\$15,055	\$10,054	\$11,975	\$21,059
Western	\$6,624	\$8,400	\$15,024	\$10,017	\$11,884	\$21,901
CSU Average	\$6,736	\$8,400	\$15,125	\$10,078	\$11,970	\$22,048
Asnuntuck	\$2,828		\$2,828	\$4,208		\$4,208
Capital	\$2,828		\$2,828	\$4,236		\$4,236
Gateway	\$2,828		\$2,828	\$4,168		\$4,168
Housatonic	\$2,828		\$2,828	\$4,168		\$4,168
Manchester	\$2,828		\$2,828	\$4,168		\$4,168
Middlesex	\$2,828		\$2,828	\$4,168		\$4,168
Naugatuck Valley	\$2,828		\$2,828	\$4,208		\$4,208
Northwestern CT	\$2,828		\$2,828	\$4,168		\$4,168
Norwalk	\$2,828		\$2,828	\$4,188		\$4,188
Quinebaug Valley	\$2,828		\$2,828	\$4,198		\$4,198
Three Rivers	\$2,828		\$2,828	\$4,208		\$4,208
Tunxis	\$2,828		\$2,828	\$4,208		\$4,208
CCC Average	\$2,828		\$2,828	\$4,191		\$4,191

- In-state rates are reflected for public institutions.

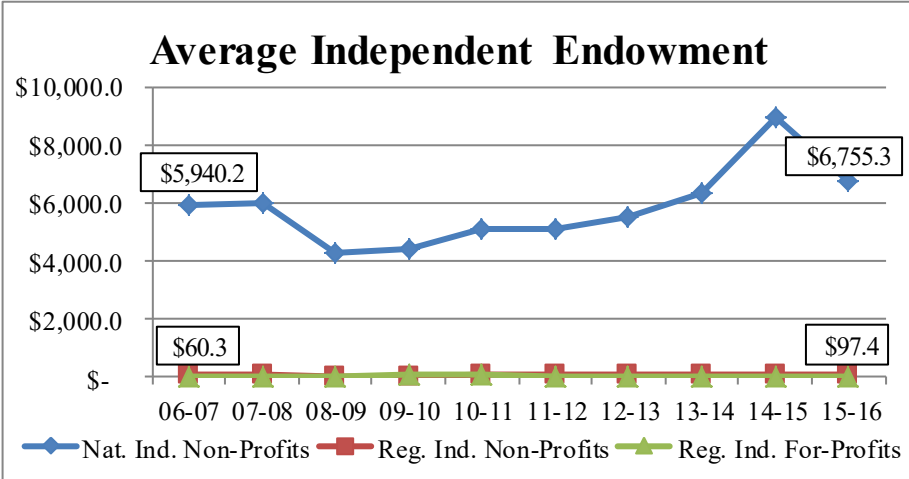
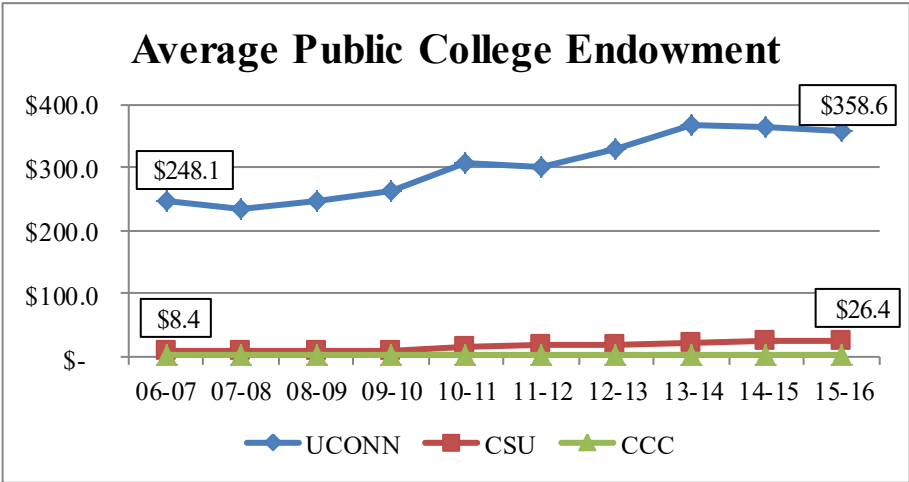
- *Source: IPEDS Data Center*

Tuition and Fees

<u>Independent Institutions</u>	<u>2007-08</u>			<u>2016-17</u>		
	<u>Total Tuition & Required Fees</u>	<u>Room & Board</u>	<u>Total</u>	<u>Total Tuition & Required Fees</u>	<u>Room & Board</u>	<u>Total</u>
National Non-Profit Independents						
Connecticut College	N/R	N/R	N/R	\$50,940	\$14,606	\$65,000
Trinity College	\$36,870	\$9,420	\$46,290	\$52,760	\$13,680	\$66,440
Wesleyan University	\$36,806	\$10,130	\$46,936	\$50,912	\$13,950	\$64,862
Yale University	\$34,530	\$10,470	\$45,000	\$49,480	\$15,170	\$64,650
National Non-Profit Average	\$36,069	\$10,007	\$46,075	\$51,023	\$14,215	\$65,238
Regional Non-Profit Independents						
Albertus Magnus College	\$21,114	\$8,907	\$30,021	\$30,526	\$14,016	\$44,542
Fairfield University	\$33,905	\$10,430	\$44,335	\$46,000	\$13,860	\$59,860
Goodwin College	\$14,820	-	\$14,82	\$20,400	-	\$20,400
Hartford Seminary	N/R	N/R	N/R	\$12,722	\$5,355	\$18,077
Holy Apostles College and Seminary	\$7,800	-	\$7,800	\$7,750	\$2,730	\$10,480
Mitchell College	\$23,093	\$10,406	\$33,499	\$31,780	\$12,500	\$44,280
Quinnipiac University	\$28,720	\$11,200	\$39,920	\$43,940	\$15,170	\$59,110
Sacred Heart University	\$27,150	\$11,608	\$38,758	\$38,200	\$14,450	\$52,650
St. Vincent's College	\$11,145	-	\$11,145	\$14,520	-	\$14,520
University of Bridgeport	\$22,860	\$10,000	\$32,860	\$31,630	\$13,320	\$44,950
University of Hartford	\$26,996	\$10,418	\$37,414	\$37,790	\$11,986	\$49,776
University of New Haven	\$26,396	\$10,810	\$37,206	\$37,060	\$15,130	\$52,190
University of Saint Joseph	\$24,690	\$11,880	\$36,570	\$36,870	\$10,750	\$47,620
Regional Non-Profit Average	\$22,391	\$10,629	\$28,027	\$29,938	\$11,752	\$39,881
Regional For-Profit Independents						
Lincoln College of New England	\$16,620	\$3,600	\$20,220	\$20,050	\$11,300	\$31,350
Paier College of Art	\$12,360	-	\$12,360	\$15,450	-	\$15,450
Post University	\$20,550	\$8,750	\$31,300	\$16,510	\$10,500	\$27,010
Regional For-Profit Average	\$17,177	\$6,175	\$21,293	\$17,337	\$10,900	\$24,603

• Source: IPEDS Data Center

Endowment



	<u>2006-07</u>	<u>2015-16</u>	<u>Percent Change</u>
UConn	\$248.1	\$358.6	44.5%
CSU	\$8.4	\$26.4	213.8%
CCC	\$1.9	\$2.5	32.4%
COSC	\$1.4	\$1.6	19.4%
Nat. Ind. Non-Profit	\$5,940.2	\$6,755.3	13.7%
Reg. Ind. Non-Profit	\$56.0	\$97.4	61.6%
Reg. Ind. For-Profit	\$4.4	\$10.3	131.0%

- Data as reported indicates 15.8% growth in the size of institutional endowments among CT institutions in the last 10 years.
- Endowments a public institutions have more than doubled in the last 10 year period.
- Wide variances at individual institutions can be seen in supporting data located in the appendix.
- COSC - Charter Oak State College

- Note: Endowment in Millions
- Source: IPEDS Data Center

Endowment - Public Institutions

	<u>2006-07</u>	<u>2015-16</u>	<u>% Growth</u>
UConn	\$248,147,876	\$358,595,274	44.5%
Central	N/R	\$56,538,241	-
Eastern	\$7,600,638	\$13,507,512	77.7%
Southern	\$9,248,935	\$17,435,512	88.5%
Western	N/R	\$18,281,789	-
CSU Average	\$8,424,787	\$26,440,764	-
Asnuntuck	\$123,486	\$137,046	11.0%
Capital	\$763,508	\$811,630	6.3%
Gateway	\$245,382	\$1,027,987	318.9%
Housatonic	\$290,743	\$597,302	105.4%
Manchester	\$1,708,427	\$2,392,415	40.0%
Middlesex	\$239,048	\$429,415	79.7%
Naugatuck Valley	\$545,728	\$857,627	57.2%
Northwestern CT	\$379,928	\$1,186,460	212.3%
Norwalk	\$15,445,919	\$16,305,977	5.6%
Quinebaug Valley	\$1,448,195	\$2,885,567	99.3%
Three Rivers	\$1,025,154	\$2,455,807	139.6%
Tunxis	\$156,287	\$537,702	244.0%
CCC Average	\$1,864,317	\$2,468,755	32.4%
Charter Oak State College	\$1,381,217	\$1,649,368	19.4%

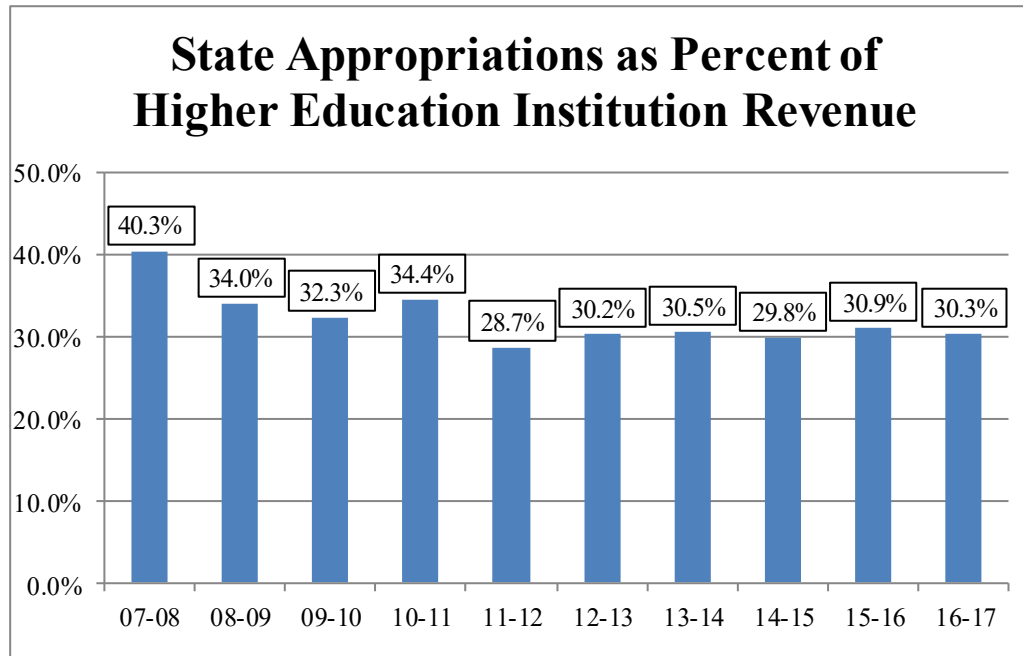
- *Source: IPEDS Data Center*

Endowment - Independent Institutions

<u>Independent Institutions</u>	<u>2006-07</u>	<u>2015-16</u>	<u>% Growth</u>
National Non-Profit Independents			
Connecticut College	\$225,045,000	\$273,576,000	21.6%
Trinity College	\$460,278,472	\$532,344,486	15.7%
Wesleyan University	\$710,774,000	\$802,204,000	12.9%
Yale University	\$22,364,717,000	\$25,413,149,000	13.6%
National Non-Profit Average	\$5,940,203,618	\$6,755,318,372	13.7%
Regional Non-Profit Independents			
Albertus Magnus College	\$2,703,997	\$6,948,392	157.0%
Fairfield University	\$269,407,000	\$310,278,000	15.2%
Goodwin College	\$256,161	\$9,104,000	3454.0%
Hartford Seminary	N/R	\$42,277,329	-
Holy Apostles College and Seminary	\$657,367	N/R	-
Mitchell College	\$5,232,383	\$8,057,239	54.0%
Quinnipiac University	\$223,008,000	\$387,963,715	74.0%
Sacred Heart University	\$69,472,494	\$141,393,748	103.5%
St. Vincent's College	\$4,439,927	\$3,929,197	-11.5%
University of Bridgeport	\$6,734,000	\$34,113,000	406.9%
University of Hartford	\$109,295,000	\$145,522,000	33.1%
University of New Haven	\$11,925,384	\$53,194,472	346.1%
University of Saint Joseph	\$20,053,000	\$25,789,000	28.6%
Regional Non-Profit Average	\$60,265,393	\$97,382,508	61.6%
Regional For-Profit Independents			
Lincoln College of New England	\$1,186,835	N/R	-
Paier College of Art	\$645,559	\$457,617	-25.9%
Post University	\$11,503,528	\$20,055,114	74.3%
Regional For-Profit Average	\$4,445,307	\$10,266,868	131.0%

- *Source: IPEDS Data Center*
- *Note: Regional For-Profit institutions do not have "Endowments." End of year equity from audited balance sheets that are provided to IPEDS are used for this comparison.*

Funding for Public Institutions



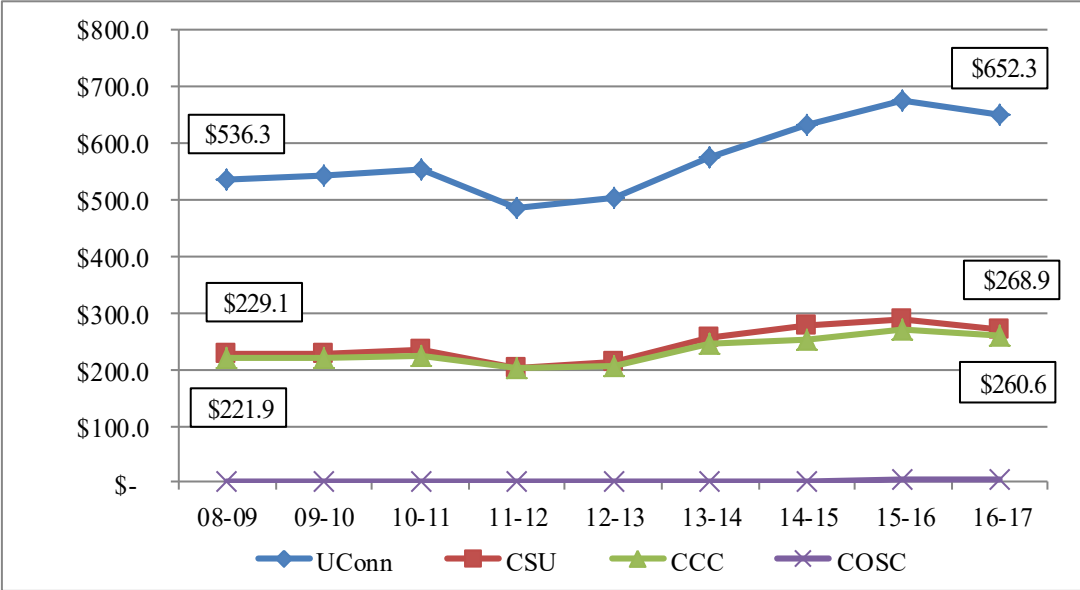
	<u>2007-08</u>	<u>2008-09</u>	<u>2009-10</u>	<u>2010-11</u>	<u>2011-12</u>	<u>2012-13</u>	<u>2013-14</u>	<u>2014-15</u>	<u>2015-16</u>	<u>2016-17</u>
UConn	36.5%	29.1%	29.8%	30.6%	24.4%	26.9%	25.3%	25.1%	26.4%	24.9%
CSU	36.4%	34.6%	36.8%	35.0%	30.9%	29.6%	32.6%	33.0%	35.2%	34.7%
CCC	55.2%	55.7%	35.2%	48.8%	44.4%	44.5%	51.5%	47.1%	44.4%	51.4%
COSC	26.6%	24.0%	20.5%	19.9%	24.9%	20.8%	19.9%	20.2%	21.4%	27.0%

- The percentage of state dollars to public institutions as opposed to other sources of revenue peaked in 2007-08, but has retreated to its lowest levels in the 10 year reporting period.
- IPEDS defines state appropriations as revenues received by an institution through acts of a legislative body, except grants and contracts. These funds are for meeting the current operating expenses and not for specific projects or programs.

- *Source: IPEDS Data Center*
- *Note: IPEDS Data includes the percentage of “state appropriations” to “total all revenues and other additions.”*

Funding for Public Institutions

Annual State Appropriations



	<u>2007-08</u>	<u>2008-09</u>	<u>2009-10</u>	<u>2010-11</u>	<u>2011-12</u>	<u>2012-13</u>	<u>2013-14</u>	<u>2014-15</u>	<u>2015-16</u>	<u>2016-17</u>
UConn	\$328.2	\$536.3	\$543.9	\$554.2	\$485.4	\$501.8	\$574.2	\$631.3	\$674.0	\$652.2
CSU	\$232.0	\$299.1	\$226.0	\$236.2	\$201.5	\$214.5	\$257.0	\$277.7	\$289.3	\$268.9
CCC	\$222.6	\$221.9	\$220.2	\$225.4	\$202.6	\$207.4	\$246.1	\$252.2	\$268.7	\$260.6
COSC	\$2.2	\$2.1	\$2.2	\$2.2	\$2.6	\$2.5	\$2.7	\$3.1	\$3.4	\$4.6

- While appropriations as a percent of total revenue has declined in recent years, total annual state appropriation dollars for higher education have grown by 51.1% in the last 10 years.
- UConn appropriations have grown the most at 98.8%, followed by Charter Oak at 109.6% and Community Colleges and State Universities at 17.0% and 15.9% respectively.

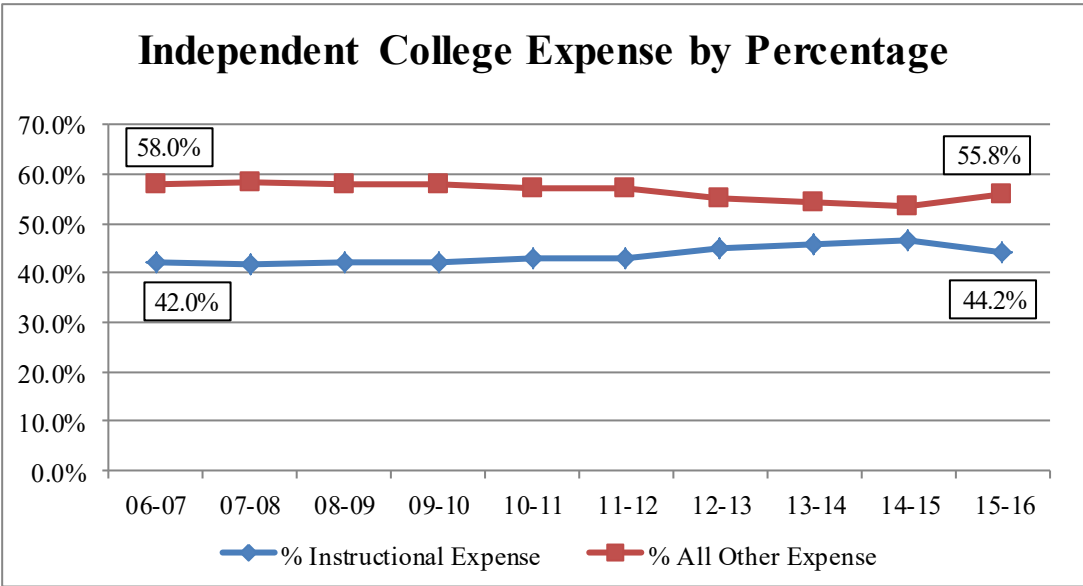
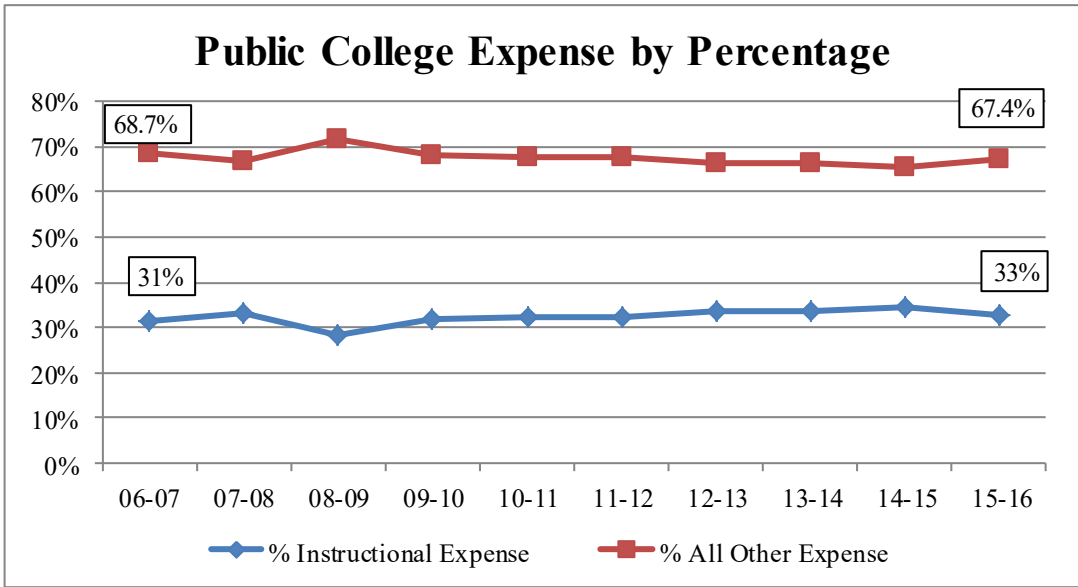
- Note: Appropriations in Millions.
- Source: IPEDS Data Center

**Higher Education Funding - 10 Year Trend of State Appropriations
as a Percent of Total Revenue**

	<u>2007-08</u>			<u>2016-17</u>		
	<u>Appropriations</u>	<u>Total Revenue</u>	<u>Percent</u>	<u>Appropriations</u>	<u>Total Revenue</u>	<u>Percent</u>
UConn	328,176,623	898,420,119	36.5%	652,323,755	2,616,111,427	24.9%
Central	74,957,246	202,836,204	37.0%	84,487,949	247,757,146	34.1%
Eastern	40,040,568	107,115,485	37.4%	53,004,355	136,017,324	39.0%
Southern	74,712,353	221,494,050	33.7%	79,959,053	238,237,972	33.6%
Western	42,307,340	105,389,285	40.1%	51,367,159	151,751,864	33.8%
CSU Sub-total	232,017,507	636,835,024	36.4%	268,858,516	773,764,306	34.7%
Asnuntuck	9,450,553	16,710,395	56.6%	12,455,649	25,833,090	48.2%
Capital	17,779,555	38,874,798	45.7%	20,769,538	36,371,157	57.1%
Gateway	23,391,205	42,577,004	54.9%	34,636,897	64,247,692	53.9%
Housatonic	16,699,957	32,094,508	52.0%	24,558,754	49,956,212	49.2%
Manchester	28,454,910	50,082,863	56.8%	30,460,412	64,624,790	47.1%
Middlesex	11,701,332	18,911,884	61.9%	13,645,872	26,167,117	52.1%
Naugatuck Valley	32,559,461	52,358,544	62.2%	34,544,078	70,141,192	49.2%
Northwestern CT	11,317,170	17,178,113	65.9%	11,361,741	19,428,094	58.5%
Norwalk	24,368,765	45,515,290	53.5%	25,932,226	56,343,677	46.0%
Quinebaug Valley	9,123,964	15,987,747	57.1%	11,388,796	19,439,698	58.6%
Three Rivers	19,202,835	38,901,207	49.4%	20,522,218	38,043,798	53.9%
Tunxis	18,563,687	34,355,169	54.0%	20,281,401	36,161,845	56.1%
CCC Sub-Total	209,613,394	403,547,522	55.2%	260,557,582	506,758,362	51.4%
Charter Oak State College	2,196,678	8,269,862	26.6%	4,605,000	14,428,738	27.0%
Total	785,004,202	1,947,072,527	40.3%	1,186,344,853	3,991,062,833	30.3%

- *Source: IPEDS Data Center*
- *Note: IPEDS Data includes the percentage of “state appropriations” to “total all revenues and other additions.”*

Instructional Expense as a Percentage of Total Expenses



- As a whole of the percentage of institutional expenses classified as “instructional expense” has increased from levels reported 10 years ago.

- *Source: IPEDS Data Center*
- *Note: “Instructional Expense” includes salary and wages only. “All Other Expenses” include the following: Benefits, Operations and Maintenance of Plant, Depreciation, Interest, and Other Expenses.*

Higher Education Expenses - Instructional Expenses

	<u>2006-07</u>	<u>Percent of Total</u>	<u>2015-16</u>	<u>Percent of Total</u>
UConn	\$256,079,892	29.7%	\$638,676,694	27.2%
Central	\$53,820,329	28.9%	\$113,572,028	44.6%
Eastern	\$25,959,558	26.6%	\$52,753,948	38.8%
Southern	\$61,154,709	34.1%	\$110,755,197	44.6%
Western	\$28,263,431	26.5%	\$59,985,953	41.9%
CSU Sub-total	\$169,198,027	29.7%	\$337,067,126	43.1%
Asnuntuck	\$4,972,535	38.3%	\$9,380,601	42.2%
Capital	\$12,366,242	38.5%	\$17,531,867	41.8%
Gateway	\$16,383,542	44.9%	\$30,357,545	43.4%
Housatonic	\$10,410,790	37.4%	\$17,235,117	36.0%
Manchester	\$16,247,262	35.1%	\$26,150,006	41.4%
Middlesex	\$6,596,859	37.3%	\$11,552,914	42.0%
Naugatuck Valley	\$16,682,749	37.7%	\$28,532,492	42.4%
Northwestern CT	\$5,402,873	35.4%	\$6,765,131	34.7%
Norwalk	\$17,405,251	39.8%	\$24,531,426	40.6%
Quinebaug Valley	\$4,682,790	32.1%	\$6,931,564	35.6%
Three Rivers	\$11,064,784	42.6%	\$16,682,613	42.6%
Tunxis	\$10,853,146	37.3%	\$16,638,234	41.9%
CCC Sub-Total	\$133,068,823	38.4%	\$212,289,510	41.0%
Charter Oak State College	\$1,358,521	19.7%	\$6,035,813	37.7%
Total	\$559,705,263	31.3%	\$1,194,069,143	32.6%

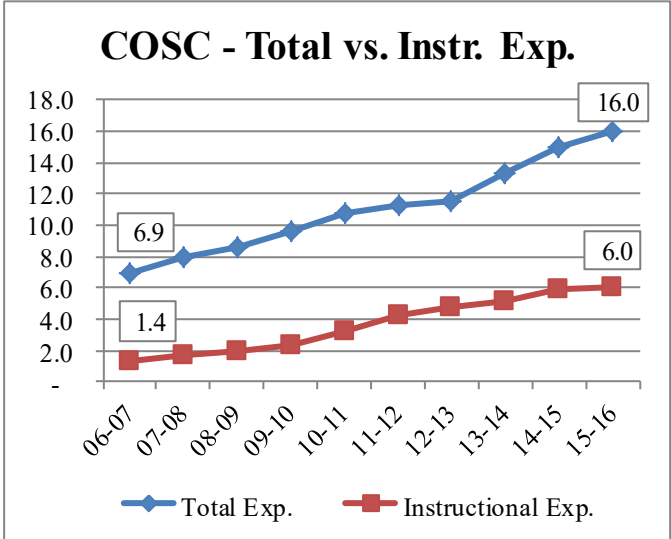
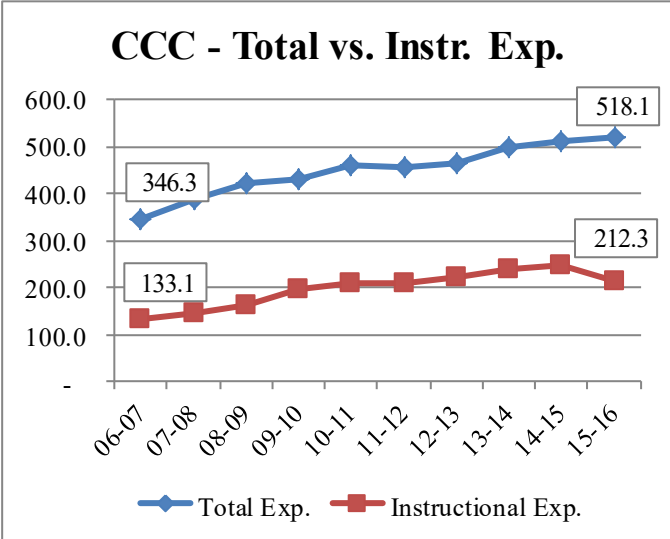
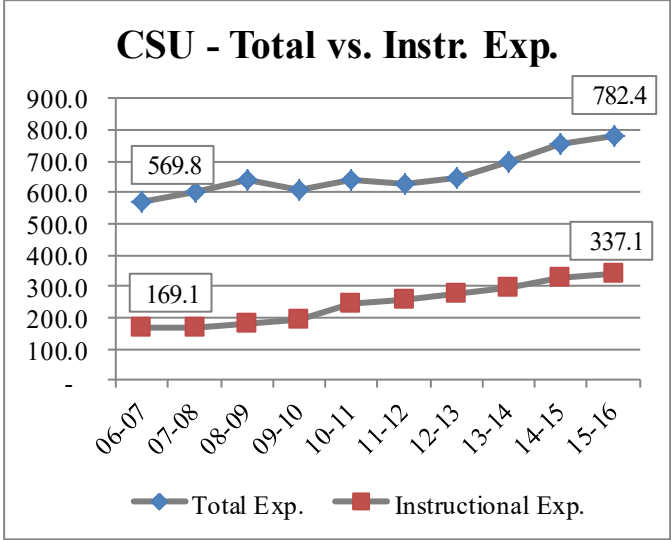
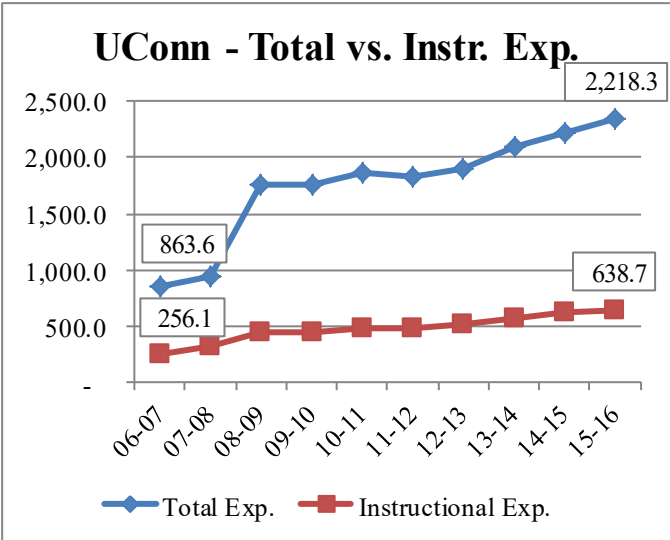
• Source: IPEDS Data Center

Higher Education Expenses - Instructional Expenses

	<u>2006-07</u>	<u>Percent of Total</u>	<u>2015-16</u>	<u>Percent of Total</u>
National Non-Profit Independents				
Connecticut College	\$29,975,000	36.4%	\$40,646,000	36.3%
Trinity College	\$41,614,838	34.5%	\$42,815,900	28.3%
Wesleyan University	\$70,749,000	42.2%	\$93,470,000	46.3%
Yale University	\$927,226,000	44.0%	\$1,608,364,707	47.8%
National Non-Profit Average	\$1,069,564,838	43.1%	\$1,785,296,607	46.6%
Regional Non-Profit Independents				
Albertus Magnus College	\$8,747,832	39.0%	\$9,104,037	32.5%
Fairfield University	\$44,765,000	31.8%	\$56,609,000	30.4%
Goodwin College	\$6,740,733	49.0%	\$38,769,544	63.2%
Hartford Seminary	N/R	-	\$1,483,893	32.3%
Holy Apostles College and Seminary	\$784,336	31.0%	\$1,009,169	27.9%
Mitchell College	\$3,514,933	20.3%	\$3,641,069	18.1%
Quinnipiac University	\$64,163,178	43.1%	\$131,202,237	40.3%
Sacred Heart University	\$33,881,850	31.8%	\$64,330,579	35.0%
St. Vincent's College	\$2,043,322	53.1%	\$4,486,569	51.9%
University of Bridgeport	\$23,843,000	43.9%	\$38,246,000	41.2%
University of Hartford	\$70,268,000	46.8%	\$87,809,000	48.4%
University of New Haven	\$34,506,247	40.6%	\$63,307,849	34.4%
University of Saint Joseph	\$10,448,233	30.4%	\$24,521,000	39.4%
Regional Non-Profit Average	\$303,706,664	38.9%	\$524,539,946	39.4%
Regional For-Profit Independents				
Lincoln College of New England	\$1,929,514	23.2%	\$4,068,612	35.2%
Paier College of Art	\$964,125	38.9%	\$747,218	45.5%
Post University	\$7,249,213	32.3%	\$18,333,060	20.7%
Regional For-Profit Average	\$10,142,852	30.5%	\$23,148,890	22.7%
Total	\$1,383,414,354	42.0%	\$2,332,985,443	44.2%

• Source: IPEDS Data Center

Higher Education Expenses - Instructional vs. Total Expenses

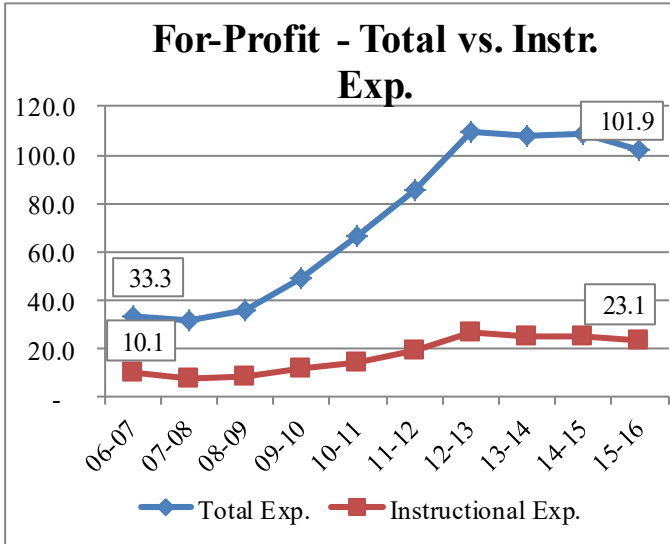
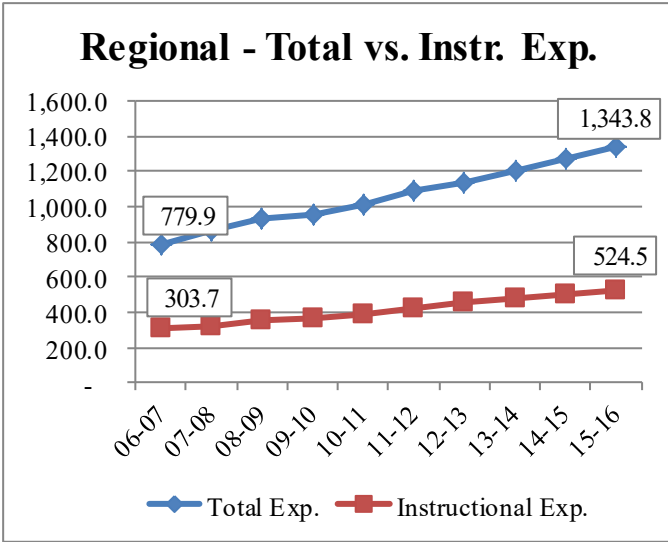
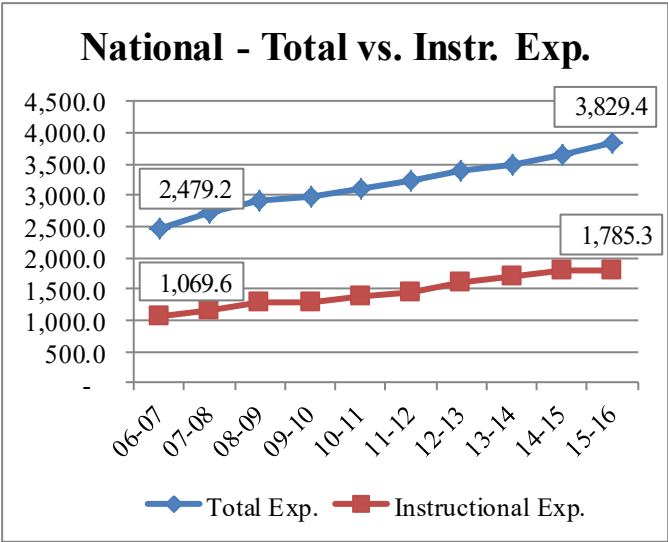


	<u>Instructional Expenses</u>			<u>Total Expenses</u>		
	<u>2006-07</u>	<u>2015-16</u>	<u>Percent Change</u>	<u>2006-07</u>	<u>2015-16</u>	<u>Percent Change</u>
UConn	256,079,892	638,676,694	149.4%	863,553,752	2,346,027,198	171.7%
CSU	169,132,565	337,067,126	99.3%	569,838,438	782,378,130	37.3%
CCC	133,068,823	212,289,510	59.5%	346,338,796	518,073,262	49.6%
COSC	1,358,521	6,035,813	344.3%	6,903,832	15,992,122	131.6%

- Instructional expenses have increased at a greater percentage than have total expenses for the CSU's, CCC's, and COSC.

• Source: IPEDS Data Center

Higher Education Expenses - Instructional vs. Total Expenses

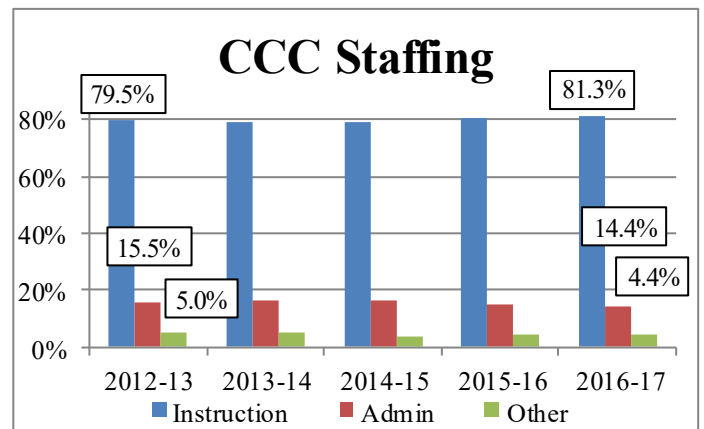
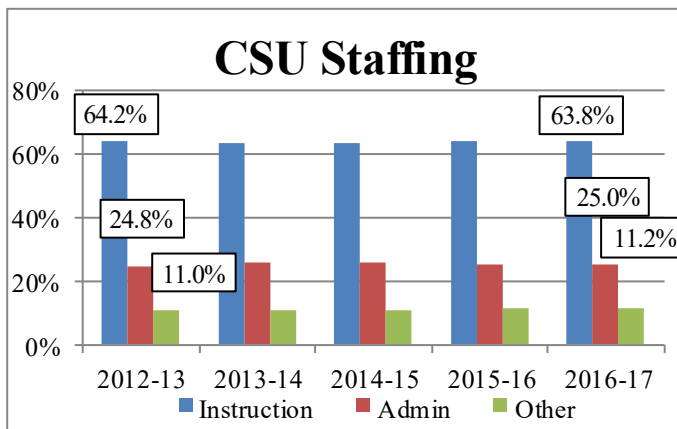
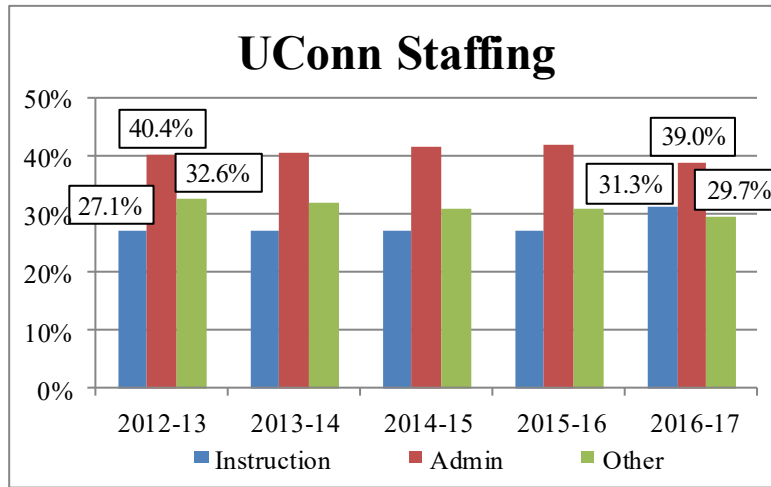


	<u>Instructional Expenses</u>			<u>Total Expenses</u>		
	<u>2006-07</u>	<u>2015-16</u>	<u>Percent Change</u>	<u>2006-07</u>	<u>2015-16</u>	<u>Percent Change</u>
Natn'l Ind. Non-Profit	1,069,564,838	1,785,296,607	66.9%	2,479,242,422	3,829,439,337	54.5%
Regn'l Ind. Non-Profit	303,706,664	524,639,946	72.7%	779,908,612	524,539,946	72.3%
Regn'l Ind. For-Profit	10,142,852	23,148,890	128.2%	33,252,671	101,928,086	206.5%

- Instructional expenses have increased at a greater percentage than have total expenses for the Regional Independent Non-Profit's and Regional Independent For-Profits.

• Source: IPEDS Data Center

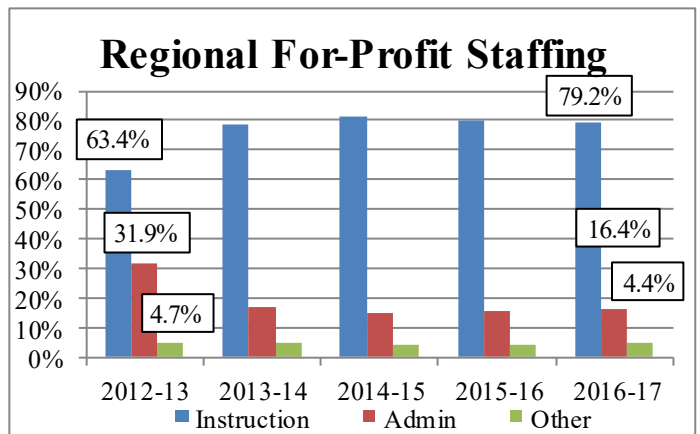
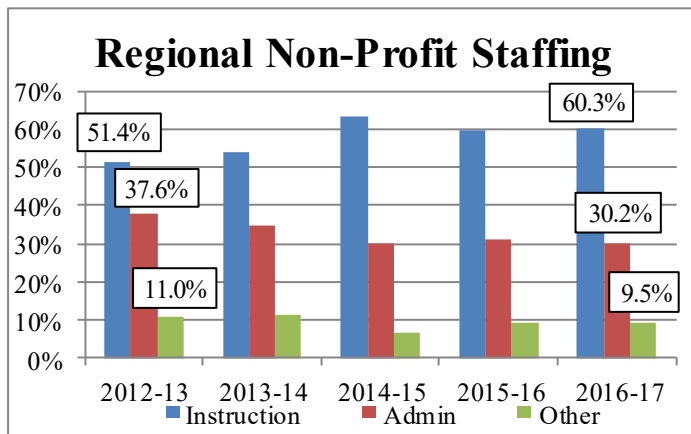
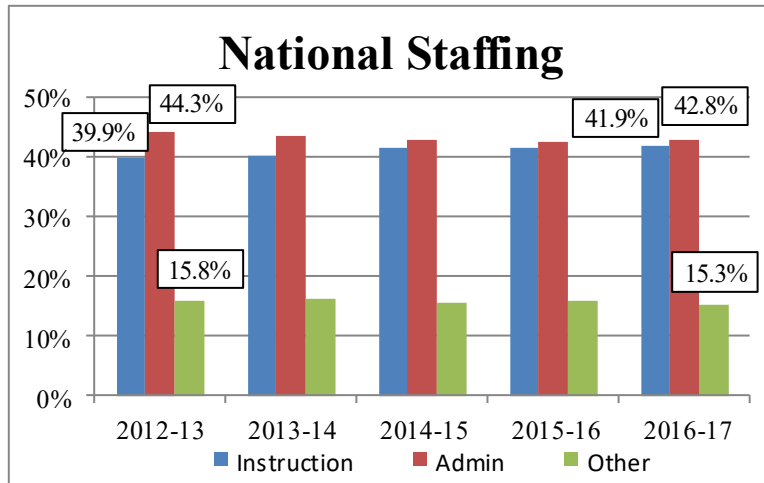
Faculty/Staffing Positions—Public Institutions



- At UConn, administrative staffing, as a percentage of total staffing, has remained flat over the last 4 years since the SOC code reclassification while instructional staffing has grown slightly.
- At CSU and CCC, instructional and administrative staffing have remained flat.

- *Source: IPEDS Data Center*
- *Note— In 2012, The IPEDS HR survey was changed to comply with the requirement to align IPEDS HR reporting with the 2010 Standard Occupational Classification (SOC) system.*
- *Instruction includes – instructional staff, instructional research, public service staff, librarians, curators, archivists, academic affairs and other educational services. Administration includes– office and administrative support, management, business and financial operations, computer engineering and science, community service and legal arts and media. Other includes—healthcare practitioners and technical, service staff, sales and related, natural resources, construction and maintenance, production, transport and material moving, as defined by IPEDS.*

Faculty/Staffing Positions - Independent Institutions



- At the National Independent’s, instructional staffing, as a percentage of total staffing, grew slightly over the last 4 years since the SOC code reclassification while administrative staffing declined slightly.
- At the Regional Non-Profit and For-Profit Independent’s, instructional staffing, as a percentage of total staffing, grew over the last 4 years since the SOC code reclassification while administrative staffing declined.

- *Source: IPEDS Data Center*
- *Note— In 2012, The IPEDS HR survey was changed to comply with the requirement to align IPEDS HR reporting with the 2010 Standard Occupational Classification (SOC) system.*
- *Instruction includes – instructional staff, instructional research, public service staff, librarians, curators, archivists, academic affairs and other educational services. Administration includes— office and administrative support, management, business and financial operations, computer engineering and science, community service and legal arts and media. Other includes—healthcare practitioners and technical, service staff, sales and related, natural resources, construction and maintenance, production, transport and material moving, as defined by IPEDS.*

Faculty/Staffing Positions—Public

	<u>2012-13</u>					<u>2016-17</u>				
	<u>Instruction & Library</u>	<u>Office Admin & Bus.</u>	<u>Other</u>	<u>Total</u>	<u>Percent Instruction & Library</u>	<u>Instruction & Library</u>	<u>Office Admin & Bus.</u>	<u>Other</u>	<u>Total</u>	<u>Percent Instruction & Library</u>
UConn	2,601	3,881	3,133	9,615	27.1%	3,279	4,083	3,117	10,479	31.3%
Central	1,072	466	119	1,637	65.5%	1,071	414	114	1,599	67.0%
Eastern	579	251	154	984	58.8%	625	244	153	1,022	61.2%
Southern	1,190	433	205	1,828	65.1%	1,055	439	189	1,683	62.7%
Western	681	229	124	1,034	65.9%	627	227	136	990	63.3%
CSU Sub-total	3,522	1,359	602	5,483	64.2%	3,378	1,324	592	5,294	63.8%
Asnuntuck	167	41	8	216	77.3%	188	29	9	226	83.2%
Capital	397	61	12	470	84.5%	259	59	14	332	78.0%
Gateway	598	99	37	734	81.5%	558	81	30	669	83.4%
Housatonic	406	79	20	505	80.4%	372	81	20	473	78.6%
Manchester	560	113	46	719	77.9%	508	86	42	636	79.9%
Middlesex	260	54	5	319	81.5%	234	34	2	270	86.7%
Naugatuck Valley	528	98	51	677	78.0%	468	83	43	594	78.8%
Northwestern CT	142	45	11	198	71.7%	121	32	9	162	74.7%
Norwalk	493	84	17	594	83.0%	477	69	6	551	86.4%
Quinebaug Valley	N/R	N/R	N/R	N/R	-	154	39	9	202	76.2%
Three Rivers	327	66	17	410	79.8%	324	57	14	395	82.2%
Tunxis	358	86	43	487	73.5%	339	58	17	414	81.9%
CCC Sub-Total	4,236	826	267	5,329	79.5%	4,002	708	215	4,925	81.3%
Charter Oak	282	61	-	343	82.2%	263	64	-	327	80.4%
Total	10,641	6,127	4,002	20,770	51.2%	10,922	6,179	3,924	21,025	51.9%

- *Source: IPEDS Data Center*
- *Note— In 2012, The IPEDS HR survey was changed to comply with the requirement to align IPEDS HR reporting with the 2010 Standard Occupational Classification (SOC) system.*
- *N/R - Not Reported*

Faculty/Staffing Positions - Independent

	<u>2012-13</u>					<u>2016-17</u>				
	<u>Instruction & Library</u>	<u>Office Admin & Bus.</u>	<u>Other</u>	<u>Total</u>	<u>Percent Instruction & Library</u>	<u>Instruction & Library</u>	<u>Office Admin & Bus.</u>	<u>Other</u>	<u>Total</u>	<u>Percent Instruction & Library</u>
National Non-Profit Independents										
Connecticut College	N/R	N/R	N/R	N/R	-	316	343	220	879	35.9%
Trinity College	N/R	N/R	N/R	N/R	-	392	335	57	774	50.6%
Wesleyan University	485	369	114	968	50.1%	503	401	118	1,022	49.2%
Yale University	5,657	6,453	2,325	14,435	39.2%	6,321	6,628	2,370	15,319	41.3%
National Non-Profit Average	6,142	6,822	2,439	15,403	35.5%	7,532	7,707	2,755	17,994	41.9%
Regional Non-Profit Independents										
Albertus Magnus College	N/R	N/R	N/R	N/R	-	288	103	65	456	63.2%
Fairfield University	N/R	N/R	N/R	N/R	-	665	351	88	1,104	60.2%
Goodwin College	338	134	20	492	68.7%	385	136	40	564	68.6%
Hartford Seminary	N/R	N/R	N/R	N/R	-	21	15	2	38	55.3%
Holy Apostles College and Semi-	N/R	N/R	N/R	N/R	-	96	26	8	130	73.8%
Mitchell College	N/R	N/R	N/R	N/R	-	93	81	35	209	44.5%
Quinnipiac University	405	552	238	1,195	33.9%	1,115	606	272	1,993	55.9%
Sacred Heart University	N/R	N/R	N/R	N/R	-	884	512	103	1,499	59.0%
St. Vincent's College	N/R	N/R	N/R	N/R	-	81	17	-	98	82.7%
University of Bridgeport	461	231	33	725	63.6%	527	314	36	877	60.1%
University of Hartford	N/R	N/R	N/R	N/R	-	963	514	174	1,651	58.3%
University of New Haven	590	397	92	1,079	54.7%	720	340	98	1,158	62.2%
University of Saint Joseph	N/R	N/R	N/R	N/R	-	535	174	78	787	68.0%
Regional Non-Profit Average	1,794	1,314	383	3,491	49.3%	6,373	3,189	999	10,561	60.3%
Regional For-Profit Independents										
Lincoln College of New England	249	65	37	351	70.9%	99	30	24	153	64.7%
Paier College of Art	N/R	N/R	N/R	N/R	-	37	9	8	54	68.5%
Post University	525	324	20	869	60.4%	760	146	18	924	82.3%
Regional For-Profit Average	774	389	57	1,220	63.4%	896	185	50	1,131	79.2%

- Source: IPEDS Data Center
- Note— In 2012, The IPEDS HR survey was changed to comply with the requirement to align IPEDS HR reporting with the 2010 Standard Occupational Classification (SOC) system.
- N/R - Not Reported

The Roberta B. Willis Scholarship Program (RWSP)

The Roberta B. Willis Scholarship Program (RWSP) is the state’s primary financial aid program for eligible Connecticut residents who are enrolled as undergraduates at Connecticut’s public and nonprofit, independent institutions of higher education. The RWSP is comprised of two components, a need-merit scholarship and a need-based grant. Both components are designed to provide aid to Connecticut’s neediest students.

	**RWSP Appropriation	RWSP Need-Based	RWSP Need-Merit	AIA
*FY 2014	\$42,011,398	\$33,408,876	\$8,402,279	\$0
*FY 2015	\$42,023,498	\$32,463,152	\$8,404,699	\$765,195
*FY 2016	\$43,159,400	\$29,565,007	\$11,365,016	\$888,103
FY 2017	\$37,798,465	\$25,270,119	\$10,872,908	\$0

Total RWSP Recipients				
	*FY 2014	*FY2015	*FY2016	FY 2017
CC	5,254	4,984	5,096	5,210
CSU	4,200	3,727	4,134	3,425
UConn	3,821	3,542	4,426	1,898
Independents	5,648	5,763	4,601	2,263
Ind. - Nationals	310	223	161	69

Total RWSP Aid Dollars				
	*FY 2014	*FY2015	*FY2016	FY 2017
CC	\$6,924,366	\$5,766,558	\$6,011,837	\$10,397,368
CSU	\$10,619,190	\$9,680,064	\$11,906,408	\$9,788,266
UConn	\$10,355,306	\$10,936,559	\$13,865,123	\$8,951,007
Independents	\$13,985,908	\$12,948,500	\$9,136,568	\$5,472,209
Ind. - Nationals	\$998,466	\$768,162	\$612,109	\$301,783

Average RWSP Student Award				
	*FY 2014	*FY2015	*FY2016	FY 2017
CC	\$1,104	\$1,124	\$1,180	\$1,996
CSU	\$2,411	\$2,496	\$2,880	\$2,858
UConn	\$2,688	\$2,557	\$3,133	\$4,716
Independents	\$2,533	\$2,344	\$1,986	\$2,316
Ind. - Nationals	\$3,491	\$3,417	\$3,802	\$4,374

*Figures represent the Governor’s Scholarship Program.

** Includes any available carry forward funds from the prior year.

*** Academic Initiative Award (AIA)

- Source: Institution generated student data reports.

The Roberta B. Willis Scholarship Program (RWSP)

The Need-Merit Scholarship

The RWSP Need-Merit Scholarship provides state aid to help Connecticut's neediest and brightest students pay for college. It is not strictly a merit program; priority is given to those who are least able to contribute to college costs. Based upon continued funding, students can use their awards at any Connecticut college or university. Awards are made on a sliding scale up to a maximum federal expected family contribution (EFC) set annually by the Office of Higher Education and based on funding levels and the number of eligible applicants. The dollar amount of individual RWSP Need-Merit Scholarships are higher than RWSP Need-Based Grants and are awarded by the Office of Higher Education. Starting with the FY 2017 year, legislation limited the total expenditure for the RWSP Need-Merit Scholarship to no more than 30 percent of the entire annual RWSP appropriation. This limitation prevented the Office of Higher Education from awarding any need-merit scholarships to incoming first-year students.

Objectives

- **Access** — To qualify, students first have to meet the EFC range set by the Office of Higher Education. The RWSP Need-Merit Scholarship provides Connecticut's neediest, highest academic achieving students a guaranteed award amount which is portable to any eligible Connecticut college or university they choose to attend. In addition, their award is transferable.
- **Retention** — These awards recognize the academic performance students achieved in high school. Recognizing and rewarding academic performance is a nationally proven enrollment and retention strategy. Awards are renewable with satisfactory academic progress and continuing need. Awards are renewable for 1.5 times the minimum time to graduation (3 years for a 2 year school; 6 years for a 4 year school).
- **Completion** — For many students, the RWSP Need-Merit Scholarship provides the final bridge to making attainment of their degree a reality.

	*FY 2014	*FY 2015	*FY 2016	FY 2017
Total Awards	\$5,990,496	\$8,447,282	\$11,322,476	\$9,629,690
Total Recipients	2,438	2,503	2,727	1,964
Average Award	\$2,457	\$3,375	\$4,152	\$4,903

* Figures represent the Governor's Scholarship Program.

- *Source: Institution generated student data reports.*

The Roberta B. Willis Scholarship Program (RWSP)

The Need-Based Grant

The RWSP Need-Based Grant provides state aid to help Connecticut students that are least able to pay for college. Eligible individual institutions receives a funding allotment based on the number of needy Connecticut students enrolled in the previous year. Eligible students can receive up to \$4,500 per year for full-time study. Part-time students have their awards prorated. To be eligible students must have a federal EFC equal to or less than the maximum annual EFC as determined by state statute. Based upon continued funding, students are awarded at the determination of the Connecticut college or university they attend. The RWSP Need-Based Grant is not transferable from one institution to another. Student's who receive a RWSP Need-Merit Scholarship are not eligible for a RWSP Need-Based Grant.

Objectives

- **Access** — To qualify, students first have to meet the required EFC limits established by statute. Individual student awards can vary by institution and within an institution. Students with like EFC's are not guaranteed equal award amounts.
- **Retention** — Awards may be renewable with satisfactory academic progress and continuing need. Awards are renewable for 1.5 times the minimum time to graduation (3 years for a 2 year school; 6 years for a 4 year school).
- **Completion** — The RWSP Need-Based Grant helps many students achieve their degrees.

	FY 2014	FY 2015	FY 2016	FY 2017
Total Awards	\$34,376,946	\$33,302,721	\$29,534,588	\$25,820,943
Total Recipients	17,380	16,743	14,898	10,932
Average Award	\$1,978	\$1,989	\$1,982	\$2,362

- *Source: Institution generated student data reports.*

The Governor's Scholarship Program (GSP)

The Academic Incentive Award

The Academic Incentive Award (AIA) was created to encourage retention and completion for any student who received the GSP Need-Based Grant with sufficient credits to complete an associate's degree in two years or bachelor's degree in four years and who exceeded the minimum satisfactory academic performance standards set by the Office of Higher Education. This component was effective for new students (freshmen in fall 2013) who were eligible in their second year of study. This award was not continued under the Roberta B. Willis Scholarship Program.

Objectives

- **Retention** — The Academic Incentive Award provided additional funding to recipients of the GSP Need-Based Grant who were on pace, academically, to complete their degree in the required time frame with a competitive GPA.
- **Completion** — This award component encouraged Connecticut's neediest students to complete their degrees on-time with good academic achievement. Thus, avoiding additional loan indebtedness, increased college costs and lost future earnings.

	FY 2015	FY 2016	FY 2017
Total Awards	\$746,100	\$885,703	\$0
Total Recipients	697	758	0
Average Award	\$1,079	\$1,168	\$0

- *Source: Institution generated student data reports.*

Minority Teacher Incentive Grant Program

The Minority Teacher Incentive Program was launched in 1999 to encourage more minority students to become teachers in Connecticut. Minority junior or senior college students enrolled in state teacher preparation programs are nominated by their institutions to receive grants of up to \$5,000 per year for the last two years enrolled in college. Additionally, students who gain teaching positions in a Connecticut public elementary, middle, or high school are eligible for loan reimbursement grants for up to four years of \$2,500 per year. Potentially, each qualified student and subsequent teacher may earn up to \$20,000 from the program in total.

Since its inception, the Minority Teacher Incentive Program has awarded nearly \$5.7 million in grants and \$2.1 million in loan reimbursements to 699 potential teachers of whom 67 percent carried loans, 24 percent were transfers from community colleges and 37 percent were eligible for stipends and have become teachers in Connecticut public schools. There are likely to be more program participants than reported who are active teachers, but those without loans are not tracked at this time.

Program graduates are currently teaching in 24 Connecticut towns including Bridgeport, Hartford, New Haven, New London and Waterbury. Current grant recipients are attending the University of Connecticut, the Connecticut State University System, Connecticut College, the University of Hartford and Fairfield University .

<u>MTIP Appropriation</u>	
FY 2008	\$470,924
FY 2009	\$464,649
FY 2010	\$407,805
FY 2011	\$432,000
FY 2012	\$471,374
FY 2013	\$447,806
FY 2014	\$447,806
FY 2015	\$447,806
FY 2016	\$432,640
FY 2017	\$337,369

	2008	2009	2010	2011	2012	2013	2014	2015	2016	2017
New Nominees	30	36	26	39	34	47	26	50	59	48
New Awardees	30	36	26	39	34	47	26	50	14*	36*
Renewal Students	48	56	53	16	29	29	36	22	41	8
First-Time Teachers	18	18	8	13	10	10	15	12	14	13
Renewal Teachers	47	46	42	35	35	27	29	29	33	30

*In 2016 out of 59 nominations, 14 were awarded due to lack of funding.

*In 2017 out of 48 nominations, 36 were awarded due to lack of funding.

2017 Connecticut Higher Education Trends

Enrollment - Appendix I	45
Residence - Appendix II	46-47
Undergraduate Transfers—Appendix III a, b	48-49
Endowment - Appendix IV a, b	50-51
State Funding - Appendix V	52
Instructional Expenses - Appendix VI a, b	53-54

Enrollment - All Institutions

Fall FTE Enrollment 2008-2017

	<u>2008-08</u>	<u>2009-10</u>	<u>2010-11</u>	<u>2011-12</u>	<u>2012-13</u>	<u>2013-14</u>	<u>2014-15</u>	<u>2015-16</u>	<u>2016-17</u>	<u>2017-18</u>
Storrs	21,127	21,488	21,931	21,700	22,034	22,454	23,114	24,100	24,184	28,250
Avery Point	597	581	574	640	637	569	604	628	623	599
Stamford	966	967	980	954	1,040	1,041	1,161	1,269	1,250	1,610
Hartford										1,186
Waterbury										827
Tri-Campus	2,036	2,024	2,066	2,128	2,181	2,072	1,995	1,975	1,807	
Total	24,726	25,060	25,551	25,422	25,892	26,190	26,874	27,972	27,864	32,472
Change	2.5%	1.3%	1.9%	-0.5%	1.8%	1.1%	2.5%	3.9%	-0.4%	14.2%
Central	9,430	9,620	9,760	9,724	9,521	9,377	9,483	9,507	9,341	9,516
Eastern	4,583	4,778	4,851	4,816	4,824	4,778	4,672	4,654	4,716	4,638
Southern	9,172	9,345	9,528	9,370	9,063	8,834	8,684	8,516	8,490	8,434
Western	5,231	5,425	5,458	5,315	5,089	4,944	4,896	4,793	4,716	4,716
CSU Subtotal	28,4162	29,168	29,597	29,225	28,497	27,933	27,735	27,470	27,263	27,301
Asnuntuck	935	1,013	1,033	961	989	1,035	989	944	1,118	1,123
Capital	2,197	2,373	2,533	2,471	2,398	2,271	2,210	1,882	1,738	1,746
Gateway	3,631	3,919	4,195	4,160	4,538	4,491	4,708	4,413	4,062	4,082
Housatonic	2,885	3,266	3,603	3,478	3,459	3,245	2,994	3,005	2,998	2,987
Manchester	4,193	4,604	4,600	4,462	4,488	4,454	4,259	4,017	3,866	3,668
Middlesex	1,495	1,707	1,713	1,669	1,697	1,711	1,801	1,724	1,590	1,600
Naugatuck Valley	3,644	4,043	4,376	4,430	4,438	4,374	4,194	4,156	3,903	3,837
Northwestern CT	858	894	913	855	787	816	817	799	764	716
Norwalk	3,619	3,962	4,021	3,991	3,966	3,854	3,795	3,654	3,461	3,627
Quinebaug Valley	1,056	1,180	1,256	1,142	1,151	1,095	1,074	958	885	884
Three Rivers	2,305	2,573	2,960	2,947	2,844	2,752	2,628	2,488	2,456	2,466
Tunxis	2,470	2,588	2,762	2,732	2,667	2,582	2,419	2,391	2,199	2,340
CCC Subtotal	29,288	32,122	33,865	33,298	33,422	32,880	31,890	30,431	29,040	29,075
Total BOR	57,704	61,290	63,562	62,523	61,919	60,813	59,625	57,901	56,302	56,376
Change	4.1%	5.9%	3.6%	-1.7%	-1.0%	-1.8%	-2.0%	-3.0%	-2.8%	0.1%
	<u>2008-08</u>	<u>2009-10</u>	<u>2010-11</u>	<u>2011-12</u>	<u>2012-13</u>	<u>2013-14</u>	<u>2014-15</u>	<u>2015-16</u>	<u>2016-17</u>	<u>2017-18</u>
National Non-Profit	20,871	21,097	21,359	22,241	22,470	22,637	22,905	22,754	23,020	23,862
Regional Non-Profit	37,460	38,163	39,878	40,848	40,570	41,680	43,959	43,656	43,802	44,213
Regional For-Profit	1,963	2,487	3,705	4,939	5,752	5,978	6,053	5,605	5,508	5,994
Total	60,294	61,747	64,942	68,028	68,792	70,295	72,917	69,721	72,330	74,069
Change	2.8%	2.4%	4.9%	4.5%	1.1%	2.1%	3.6%	-1.3%	0.4%	2.3%

• Source: IPEDS Fall Enrollment Surveys

Residence Status Undergraduate - Public Institutions

	<u>2008-09</u>			<u>2017-18</u>		
	<u>% In-State</u>	<u>% Out-of-State</u>	<u>% Non-Res. Alien</u>	<u>% In-State</u>	<u>% Out-of-State</u>	<u>% Non-Res. Alien</u>
UConn	80.3%	18.3%	1.4%	76.3%	16.2%	7.4%
Central	94.7%	4.0%	1.3%	95.2%	3.2%	1.6%
Eastern	91.7%	7.4%	1.0%	92.3%	6.8%	0.9%
Southern	92.6%	6.7%	0.7%	95.9%	4.0%	0.2%
Western	91.0%	8.7%	0.3%	89.6%	10.4%	0.0%
CSU Subtotal	92.8%	6.3%	0.9%	93.8%	5.4%	0.8%
Asnuntuck	94.2%	5.8%	0.1%	91.2%	8.8%	0.0%
Capital	98.7%	0.7%	0.6%	99.0%	1.0%	0.0%
Gateway	97.7%	0.3%	2.0%	98.6%	0.5%	0.9%
Housatonic	98.9%	0.6%	0.5%	99.2%	0.5%	0.3%
Manchester	99.1%	0.3%	0.6%	99.1%	0.8%	0.1%
Middlesex	99.2%	0.4%	0.5%	99.9%	0.1%	0.0%
Naugatuck Valley	98.8%	0.9%	0.3%	99.2%	0.5%	0.3%
Northwestern CT	99.2%	0.8%	0.1%	98.8%	1.2%	0.0%
Norwalk	93.5%	2.9%	3.6%	96.9%	0.9%	2.2%
Quinebaug Valley	99.3%	0.6%	0.1%	98.0%	1.9%	0.1%
Three Rivers	98.3%	1.4%	0.3%	99.4%	0.4%	0.2%
Tunxis	98.9%	0.4%	0.7%	99.3%	0.3%	0.5%
CCC Subtotal	97.9%	1.1%	1.0%	98.5%	0.9%	0.5%
Charter Oak State College	67.6%	32.3%	0.1%	80.1%	19.3%	0.6%

- Source: IPEDS Fall Enrollment Surveys
- Note: Non-Resident Alien is defined by IPEDS as a person who is not a citizen or national of the United States and who is in this country on a visa or temporary basis and does not have the right to remain indefinitely.

Residence Status Undergraduate - Independent Institutions

<u>Independent Institutions</u>	<u>2008-09</u>			<u>2017-18</u>		
	<u>% In-State</u>	<u>% Out-of-State</u>	<u>% Non-Res. Alien</u>	<u>% In-State</u>	<u>% Out-of-State</u>	<u>% Non-Res. Alien</u>
National Non-Profit Independents						
Connecticut College	17.2%	78.3%	4.5%	19.0%	73.6%	7.4%
Trinity College	27.0%	67.4%	5.6%	17.5%	70.8%	11.8%
Wesleyan University	8.0%	84.8%	7.1%	8.5%	79.5%	12.1%
Yale University	6.0%	85.4%	8.6%	6.6%	82.7%	10.7%
National Subtotal	11.4%	81.5%	7.1%	10.7%	78.6%	10.7%
Regional Non-Profit Independents						
Albertus Magnus College	95.7%	4.1%	0.2%	91.3%	5.6%	1.3%
Fairfield University	34.9%	64.2%	1.0%	29.2%	67.8%	3.0%
Goodwin College	98.6%	1.3%	0.1%	95.3%	4.4%	0.3%
Holy Apostles College and Seminary	51.2%	26.8%	22.0%	13.4%	67.1%	19.5%
Mitchell College	62.4%	37.1%	0.5%	64.6%	35.3%	0.1%
Quinnipiac University	28.7%	70.0%	1.3%	30.7%	67.4%	1.9%
Sacred Heart University	41.6%	57.3%	1.1%	35.5%	63.2%	1.3%
St. Vincent's College	98.8%	0.5%	0.7%	98.1%	1.6%	0.2%
University of Bridgeport	57.1%	30.3%	12.6%	58.9%	28.0%	13.1%
University of Hartford	40.3%	56.2%	3.5%	49.2%	45.4%	5.4%
University of New Haven	54.5%	43.4%	2.1%	42.2%	52.1%	5.7%
University of Saint Joseph	92.7%	7.1%	0.2%	94.6%	4.6%	0.9%
Regional Non-Profit Subtotal	49.3%	48.2%	2.5%	48.3%	47.9%	3.8%
Regional For-Profit Independents						
Lincoln College of New England	93.0%	6.6%	0.4%	87.5%	12.5%	0.0%
Paier College of Art	99.5%	0.5%	0.0%	94.9%	5.1%	0.0%
Post University	63.6%	36.3%	0.1%	24.5%	74.3%	1.1%
Regional For-Profit Subtotal	75.4%	24.5%	0.2%	28.7%	70.3%	1.0%

- *Source: IPEDS Data Center*
- *Note: Non-Resident Alien is defined by IPEDS as a person who is not a citizen or national of the United States and who is in this country on a visa or temporary basis and does not have the right to remain indefinitely.*

Undergraduate Transfers-In - Public Institutions

	<u>2008-09</u>			<u>2017-18</u>		
	<u>CT Residents</u>	<u>Out-of-State Residents</u>	<u>Total Transfers</u>	<u>CT Residents</u>	<u>Out-of-State Residents</u>	<u>Total Transfers</u>
UConn	823	102	925	1,042	92	1,134
Central	998	85	1,083	995	44	1,039
Eastern	207	40	247	435	36	471
Southern	884	90	974	944	27	971
Western	436	-	436	536	36	572
CSU Subtotal	2,525	215	2,740	2,910	143	3,053
Asnuntuck	266	23	289	219	0	219
Capital	429	5	434	466	0	466
Gateway	1,063	28	1,091	896	25	921
Housatonic	712	3	715	506	0	506
Manchester	1,039	8	1,047	829	0	829
Middlesex	446	6	452	362	0	362
Naugatuck Valley	822	10	832	528	0	528
Northwestern CT	255	3	258	95	0	95
Norwalk	764	39	803	480	0	480
Quinebaug Valley	260	1	261	136	0	136
Three Rivers	570	37	607	421	0	421
Tunxis	668	9	677	375	0	375
CCC Subtotal	7,294	172	7,466	5,293	25	5,318
Charter Oak State College	N/A	N/A	N/A	272	82	354

- Source: IPEDS Fall Enrollment Surveys

Undergraduate Transfers-In - Independent Institutions

<u>Independent Institutions</u>	<u>2007-08</u>			<u>2016-17</u>		
	<u>CT Residents</u>	<u>Out-of-State Residents</u>	<u>Total Transfers</u>	<u>CT Residents</u>	<u>Out-of-State Residents</u>	<u>Total Transfers</u>
National Non-Profit Independents						
Connecticut College	5	19	24	6	18	24
Trinity College	24	10	34	8	10	18
Wesleyan University	7	49	56	13	39	52
Yale University	3	21	24	1	25	26
National Subtotal	39	99	138	28	92	120
Regional Non-Profit Independents						
Albertus Magnus College	12	6	18	69	29	98
Fairfield University	16	15	31	28	24	52
Goodwin College	327	13	340	601	56	657
Holy Apostles College and Seminary	-	8	8	4	38	42
Mitchell College	42	15	57	24	3	27
Quinnipiac University	102	77	179	127	69	196
Sacred Heart University	75	51	126	74	49	123
St. Vincent's College	85	-	85	63	4	67
University of Bridgeport	87	68	155	189	115	304
University of Hartford	164	70	234	162	72	234
University of New Haven	252	131	383	164	73	237
University of Saint Joseph	111	3	114	234	51	285
Regional Non-Profit Subtotal	1,282	530	1,812	1,739	687	2,326
Regional For-Profit Independents						
Lincoln College of New England	316	19	335	62	8	70
Paier College of Art	10	-	10	31	9	40
Post University	-	-	-	1,370	1,627	2,997
Regional For-Profit Subtotal	326	19	345	1,463	1,644	3,107

• Source: IPEDS Data Center

Endowment - Public Institutions (in Millions)

	<u>2006-07</u>	<u>2007-08</u>	<u>2008-09</u>	<u>2009-10</u>	<u>2010-11</u>	<u>2011-12</u>	<u>2012-13</u>	<u>2013-14</u>	<u>2014-15</u>	<u>2015-16</u>
UConn	\$248.1	\$233.0	\$245.8	\$263.6	\$306.3	\$301.6	\$329.0	\$367.0	\$364.6	\$358.6
Central	N/R	N/R	N/R	N/R	\$33.4	\$37.0	\$43.5	\$53.7	\$54.4	\$56.5
Eastern	\$7.6	\$10.0	\$7.6	\$10.2	\$11.5	\$11.4	\$12.3	\$13.3	\$13.4	\$13.5
Southern	\$9.2	\$10.0	\$9.9	\$11.3	\$11.1	\$11.2	\$11.7	\$13.5	\$15.2	\$17.4
Western	N/R	N/R	N/R	N/R	\$11.9	\$13.0	\$14.8	\$14.8	\$18.4	\$18.2
CSU Average	\$8.4	\$9.9	\$8.7	\$10.8	\$17.0	\$18.2	\$20.6	\$23.8	\$25.3	\$26.4
Asnuntuck	\$0.1	\$0.1	\$0.1	\$0.1	\$0.1	\$0.1	\$0.1	\$0.1	\$0.1	\$0.1
Capital	\$0.8	\$0.8	\$0.7	\$0.8	\$0.8	\$0.8	\$0.8	\$0.8	\$0.8	\$0.8
Gateway	\$0.2	\$0.2	\$0.2	\$0.2	\$0.3	\$0.3	\$0.6	\$0.6	\$0.9	\$1.0
Housatonic	\$0.3	\$0.3	\$0.3	\$0.3	\$0.6	\$0.5	\$0.5	\$0.6	\$0.6	\$0.6
Manchester	\$1.7	\$2.0	\$2.1	\$2.2	\$2.2	\$2.2	\$2.5	\$2.6	\$2.6	\$2.4
Middlesex	\$0.2	\$0.3	\$0.3	\$0.3	\$0.3	\$0.3	\$0.3	\$0.3	\$0.4	\$0.4
Naugatuck Valley	\$0.5	\$0.7	\$0.7	\$0.7	\$0.7	\$0.7	\$0.8	\$0.8	\$0.8	\$0.8
Northwestern CT	\$0.4	\$0.7	\$0.2	\$0.7	\$0.8	\$0.7	\$1.1	\$1.2	\$1.2	\$1.2
Norwalk	\$15.4	\$21.1	\$15.2	\$15.6	\$15.4	\$15.7	\$16.1	\$16.2	\$16.2	\$16.3
Quinebaug Valley	\$1.4	\$1.5	\$1.4	\$1.8	\$2.0	\$2.1	\$2.3	\$2.5	\$2.7	\$2.9
Three Rivers	\$1.0	\$1.5	\$1.9	\$2.0	\$2.1	\$2.3	\$2.3	\$2.3	\$2.4	\$2.5
Tunxis	\$0.2	\$0.2	\$0.2	\$0.5	\$0.5	\$0.5	\$0.5	\$0.5	\$0.5	\$0.5
CCC Average	\$1.9	\$2.5	\$2.0	\$2.1	\$2.2	\$2.2	\$2.3	\$2.4	\$2.5	\$2.5
Charter Oak State College	\$1.4	\$1.4	\$1.1	\$1.2	\$1.4	\$1.3	\$1.5	\$1.7	\$1.7	\$1.6

- Source: IPEDS Data Center
- N/R—Not Reported

Endowment - Independent Institutions (in Millions)

<u>Independent Institutions</u>	<u>2006-07</u>	<u>2007-08</u>	<u>2008-09</u>	<u>2009-10</u>	<u>2010-11</u>	<u>2011-12</u>	<u>2012-13</u>	<u>2013-14</u>	<u>2014-15</u>	<u>2015-16</u>
National Non-Profit Independents										
Connecticut College	\$225.0	\$215.5	\$165.0	\$179.2	\$212.6	\$211.2	\$237.0	\$278.0	N/R	\$273.6
Trinity College	\$460.3	\$434.3	\$339.8	\$370.8	\$436.7	\$439.1	\$486.5	\$551.8	\$572.0	\$532.3
Wesleyan University	\$710.8	\$652.2	\$476.5	\$512.9	\$601.5	\$616.2	\$688.6	\$793.3	\$838.8	\$802.2
Yale University	\$22,364.7	\$22,686.8	\$16,103.5	\$16,504.2	\$19,174.4	\$19,264.3	\$20,708.8	\$23,859.0	\$25,543.0	\$25,413.1
National Non-Profit Average	\$5,940.2	\$5,997.1	\$4,271.2	\$4,391.8	\$5,106.3	\$5,132.7	\$5,530.2	\$6,370.4	\$8,984.6	\$6,755.3
Regional Non-Profit Independents										
Albertus Magnus College	\$2.7	\$3.3	\$2.6	\$3.7	\$4.5	\$4.5	\$5.4	\$6.5	\$6.8	\$6.9
Fairfield University	\$269.4	\$262.3	\$203.2	\$223.4	\$254.0	\$245.3	\$271.6	\$313.1	\$317.0	\$310.3
Goodwin College	\$0.3	\$0.4	\$0.8	\$2.1	\$3.4	\$5.3	\$7.9	\$8.7	\$8.7	\$9.1
Hartford Seminary	N/R	N/R	\$30.4	\$32.7	\$38.5	\$37.5	\$41.4	\$46.7	\$43.9	\$42.3
Holy Apostles College and Seminary	\$0.7	\$0.6	\$0.6	\$0.6	N/R	N/R	N/R	N/R	N/R	N/R
Mitchell College	\$5.2	\$5.4	\$4.3	\$5.1	\$6.4	\$6.6	\$7.3	\$8.5	\$8.8	\$8.1
Quinnipiac University	\$223.0	\$228.5	\$192.5	\$223.5	\$277.5	\$272.1	\$315.2	\$348.9	\$367.9	\$388.0
Sacred Heart University	\$69.5	\$76.1	\$67.4	\$82.8	\$109.4	\$112.5	\$124.1	\$137.1	\$141.1	\$141.4
St. Vincent's College	\$4.4	\$3.3	\$3.1	\$3.4	\$3.4	\$4.2	\$3.9	\$4.4	\$4.2	\$3.9
University of Bridgeport	\$6.7	\$6.5	\$10.0	\$13.1	\$20.7	\$24.9	\$27.7	\$30.7	\$33.6	\$34.1
University of Hartford	\$109.3	\$101.5	\$82.9	\$91.4	\$115.8	\$114.6	\$128.4	\$146.1	\$148.9	\$145.5
University of New Haven	\$11.9	\$11.9	\$12.3	\$17.6	\$25.3	\$25.8	\$29.8	\$34.8	\$49.1	\$53.2
University of Saint Joseph	\$20.1	\$18.1	\$15.5	\$15.5	\$21.4	\$21.7	\$23.1	\$25.6	\$26.5	\$25.8
Regional Non-Profit Average	\$60.3	\$59.8	\$48.1	\$55.0	\$73.4	\$72.9	\$82.1	\$92.6	\$96.4	\$97.4
Regional For-Profit Independents										
Lincoln College of New England	\$1.2	\$1.2	\$13.4	\$218.6	\$222.5	N/R	N/R	N/R	N/R	N/R
Paier College of Art	\$0.6	\$0.7	\$0.7	\$0.7	\$0.7	\$0.7	\$0.6	\$0.6	\$0.5	\$0.5
Post University	\$11.5	\$11.4	\$12.0	\$12.1	\$13.6	\$17.8	\$19.2	\$19.5	\$20.8	\$20.0
Regional For-Profit Average	\$4.4	\$4.4	\$8.7	\$77.2	\$78.9	\$9.3	\$9.9	\$10.0	\$10.6	\$10.3

- Source: IPEDS Data Center
- N/R—Not Reported

Higher Education Funding - State Appropriations (in Millions)

	<u>2007-08</u>	<u>2008-09</u>	<u>2009-10</u>	<u>2010-11</u>	<u>2011-12</u>	<u>2012-13</u>	<u>2013-14</u>	<u>2014-15</u>	<u>2015-16</u>	<u>2016-17</u>
UConn	328.2	536.3	543.9	554.2	485.4	501.8	574.2	631.3	674.0	652.3
Central	75.0	73.3	72.8	74.0	62.9	67.3	81.0	87.0	90.8	84.5
Eastern	40.0	41.0	43.6	43.8	38.3	40.6	48.3	52.5	56.5	53.0
Southern	74.7	70.9	67.0	72.5	61.5	65.8	78.3	85.5	86.9	80.0
Western	42.3	43.9	42.7	45.8	38.9	40.8	49.3	52.7	55.1	51.4
CSU Subtotal	232.0	229.1	226.0	236.2	201.5	214.5	257.0	277.7	289.2	268.9
Asnuntuck	9.5	9.2	9.5	9.6	9.2	9.2	11.2	12.3	12.5	12.5
Capital	17.8	17.6	18.9	18.2	16.3	16.4	19.5	20.8	21.8	20.8
Gateway	23.4	23.7	24.5	24.4	21.6	24.7	29.2	29.2	34.8	34.6
Housatonic	16.7	19.6	17.6	18.9	17.0	17.1	20.7	24.6	25.7	24.6
Manchester	28.5	28.6	29.2	29.8	26.9	26.9	31.3	30.0	31.8	30.5
Middlesex	11.7	12.0	11.7	12.3	10.7	10.9	12.9	13.1	14.3	13.6
Naugatuck Valley	32.6	29.4	29.1	29.6	26.5	26.7	32.0	32.9	35.0	34.5
Northwestern CT	11.3	11.5	10.1	10.6	9.9	9.8	11.6	11.3	11.5	11.4
Norwalk	24.4	24.7	24.2	24.6	22.2	22.4	26.4	25.4	27.0	25.9
Quinebaug Valley	9.1	9.1	9.5	9.6	8.8	8.8	10.6	11.7	11.7	11.4
Three Rivers	19.2	18.5	18.6	19.6	17.2	17.4	20.5	20.7	21.3	20.5
Tunxis	18.6	18.3	17.8	18.5	16.4	17.2	20.2	20.1	21.3	20.3
CCC Subtotal	222.6	221.9	220.2	225.4	202.6	207.4	246.1	252.2	268.7	260.6
Charter Oak State College	2.2	2.1	2.2	1.3	2.6	2.5	2.7	3.1	3.4	3.8
Total	782.8	987.2	990.2	1,015.8	889.4	923.8	1,080.0	1,164.3	1,235.3	1,185.6

• Source: IPEDS Data Center

Higher Education Total Expenses - Public Institutions (in Millions)

	<u>2006-07</u>	<u>2007-08</u>	<u>2008-09</u>	<u>2009-10</u>	<u>2010-11</u>	<u>2011-12</u>	<u>2012-13</u>	<u>2013-14</u>	<u>2014-15</u>	<u>2015-16</u>
UConn	\$863.6	\$938.0	\$1,762.2	\$1,764.7	\$1,865.0	\$1,835.8	\$1,908.4	2,090.9	2,218.3	2,346.0
Central	\$186.2	\$198.9	\$210.1	\$198.4	\$208.0	\$200.2	\$207.2	223.2	242.0	254.8
Eastern	\$97.8	\$105.0	\$117.4	\$112.3	\$115.0	\$113.6	\$116.2	127.9	132.8	136.1
Southern	\$179.2	\$192.8	\$203.1	\$188.4	\$199.1	\$199.7	\$205.3	215.5	236.8	248.2
Western	\$106.7	\$107.6	\$110.8	\$110.5	\$117.5	\$116.3	\$117.2	127.3	141.0	143.2
CSU Subtotal	\$569.8	\$604.2	\$641.3	\$609.7	\$639.7	\$629.9	\$646.0	694.0	752.7	782.4
Asnuntuck	\$13.0	\$14.7	\$14.9	\$15.7	\$17.4	\$16.5	\$17.3	\$19.5	\$22.0	\$22.3
Capital	\$32.1	\$35.4	\$35.7	\$38.1	\$40.3	\$39.5	\$38.4	\$40.1	\$41.3	\$41.9
Gateway	\$36.5	\$41.2	\$45.6	\$47.8	\$51.2	\$58.5	\$67.5	\$70.2	\$70.2	\$69.9
Housatonic	\$27.8	\$33.3	\$38.1	\$40.2	\$44.7	\$43.2	\$41.6	\$44.0	\$46.4	\$47.9
Manchester	\$46.2	\$50.7	\$53.6	\$57.0	\$59.9	\$58.2	\$56.5	\$59.8	\$60.9	\$63.1
Middlesex	\$17.7	\$19.2	\$20.9	\$20.9	\$23.5	\$21.8	\$23.2	\$25.8	\$27.6	\$27.5
Naugatuck Valley	\$44.2	\$50.8	\$55.7	\$56.3	\$59.5	\$56.8	\$59.3	\$64.3	\$65.8	\$67.2
Northwestern CT	\$15.3	\$17.4	\$17.6	\$16.2	\$17.4	\$17.3	\$16.8	\$18.4	\$18.9	\$19.5
Norwalk	\$43.8	\$46.5	\$49.4	\$50.4	\$51.5	\$52.9	\$52.1	\$58.9	\$58.7	\$60.4
Quinebaug Valley	\$14.6	\$15.6	\$17.0	\$17.4	\$18.4	\$17.3	\$17.7	\$18.1	\$19.2	\$19.5
Three Rivers	\$26.0	\$29.8	\$37.6	\$35.2	\$38.6	\$37.4	\$38.4	\$39.4	\$39.8	\$39.1
Tunxis	\$29.1	\$34.0	\$35.1	\$35.6	\$36.6	\$35.6	\$36.3	\$39.3	\$40.1	\$39.7
CCC Subtotal	\$346.3	\$388.7	\$421.0	\$431.0	\$459.0	\$455.0	\$465.1	\$497.7	\$510.8	\$518.0
Charter Oak State College	\$6.9	\$8.0	\$8.5	\$9.6	\$10.8	\$11.3	\$11.5	\$13.3	\$14.9	\$16.0
Total	\$1,786.6	\$1,938.9	\$2,833.4	\$2,814.9	\$2,974.6	\$2,931.9	\$3,031.0	\$3,295.9	\$3,496.7	\$3,662.5

• Source: IPEDS Data Center

Higher Education Total Expenses - Independent Institutions (in Millions)

	<u>2006-07</u>	<u>2007-08</u>	<u>2008-09</u>	<u>2009-10</u>	<u>2010-11</u>	<u>2011-12</u>	<u>2012-13</u>	<u>2013-14</u>	<u>2014-15</u>	<u>2015-16</u>
National Non-Profit Independents										
Connecticut College	\$82.4	\$90.1	\$94.9	\$95.4	\$97.6	\$102.2	\$105.0	\$107.4	\$108.8	\$112.0
Trinity College	\$120.7	\$129.4	\$128.3	\$123.0	\$129.3	\$130.8	\$137.7	\$148.1	\$145.3	\$151.5
Wesleyan University	\$167.6	\$177.9	\$187.4	\$174.5	\$180.8	\$178.7	\$181.2	\$184.7	\$191.8	\$201.7
Yale University	\$2,108.5	\$2,314.4	\$2,493.5	\$2,572.1	\$2,684.0	\$2,816.8	\$2,976.1	\$3,058.9	\$3,187.6	\$3,364.2
National Non-Profit Average	\$2,479.2	\$2,711.8	\$2,904.0	\$2,971.9	\$3,091.7	\$3,228.4	\$3,400.0	\$3,499.2	\$3,633.5	\$3,829.4
Regional Non-Profit Independents										
Albertus Magnus College	\$22.4	\$24.2	\$25.2	\$25.6	\$26.7	\$29.8	\$29.5	\$27.3	\$27.0	\$28.0
Fairfield University	\$140.8	\$156.3	\$156.2	\$156.1	\$159.5	\$166.7	\$165.7	\$173.7	\$180.0	\$186.0
Goodwin College	\$13.8	\$16.1	\$20.9	\$25.3	\$34.0	\$30.9	\$46.8	\$55.0	\$65.8	\$61.3
Hartford Seminary	N/R	N/R	\$5.0	\$4.6	\$4.4	\$4.3	\$4.4	\$4.5	\$4.4	\$4.5
Holy Apostles College and Seminary	\$2.5	\$2.9	\$2.6	\$2.9	\$2.8	\$3.2	\$3.3	\$3.2	\$3.2	\$3.6
Mitchell College	\$17.3	\$20.2	\$22.0	\$23.5	\$24.1	\$24.0	\$22.1	\$21.9	\$20.6	\$20.1
Quinnipiac University	\$148.9	\$172.0	\$189.0	\$191.7	\$219.5	\$245.3	\$263.2	\$291.8	\$293.3	\$325.2
Sacred Heart University	\$106.5	\$114.4	\$121.9	\$119.3	\$128.4	\$139.4	\$146.7	\$160.4	\$172.3	\$183.6
St. Vincent's College	\$3.8	\$4.2	\$4.4	\$5.2	\$6.0	\$6.3	\$7.1	\$8.5	\$8.6	\$8.6
University of Bridgeport	\$54.3	\$66.8	\$73.7	\$73.8	\$75.4	\$78.2	\$80.2	\$80.9	\$92.5	\$102.9
University of Hartford	\$150.0	\$154.3	\$166.1	\$167.9	\$165.3	\$169.8	\$168.7	\$167.5	\$173.8	\$181.6
University of New Haven	\$85.0	\$98.2	\$111.7	\$122.0	\$122.0	\$137.7	\$146.0	\$154.5	\$168.9	\$176.3
University of Saint Joseph	\$34.4	\$36.0	\$39.5	\$41.4	\$45.8	\$51.6	\$54.4	\$58.7	\$60.9	\$61.8
Regional Non-Profit Average	\$779.9	\$865.6	\$938.0	\$959.3	\$1,013.8	\$1,087.1	\$1,138.5	\$1,207.9	\$1,271.4	\$1,343.8
Regional For-Profit Independents										
Lincoln College of New England	\$8.3	\$9.1	\$9.0	\$11.2	\$13.0	\$17.1	\$20.9	\$16.1	\$13.2	\$11.6
Paier College of Art	\$2.5	\$2.4	\$2.3	\$2.5	\$2.4	\$2.3	\$2.1	\$1.7	\$1.7	\$1.6
Post University	\$22.5	\$20.3	\$24.9	435.2	\$50.8	\$66.6	\$86.8	\$90.1	\$94.3	\$88.7
Regional For-Profit Average	\$33.3	\$31.8	\$36.1	\$48.9	\$66.3	\$85.9	\$109.8	\$107.9	\$109.1	\$101.9

- Source: IPEDS Data Center
- N/R - Not Reported