



Adobe

The ColdFusion logo, featuring the letters 'Cf' in a white, sans-serif font. The 'C' is larger and positioned to the left of the 'f'. The logo is centered within a glowing, multi-layered triangle that transitions from purple at the top to orange at the bottom. The background is dark with several overlapping, semi-transparent circles in shades of purple and blue.

# Adobe ColdFusion Evangelism Kit





# Adobe ColdFusion

Making hard things easy for coders across the world





## Strong foot print

Fortune 100 companies  
use ColdFusion

# 70%

Customers rate ColdFusion as most  
important for their organization

Customers use ColdFusion  
to build new applications

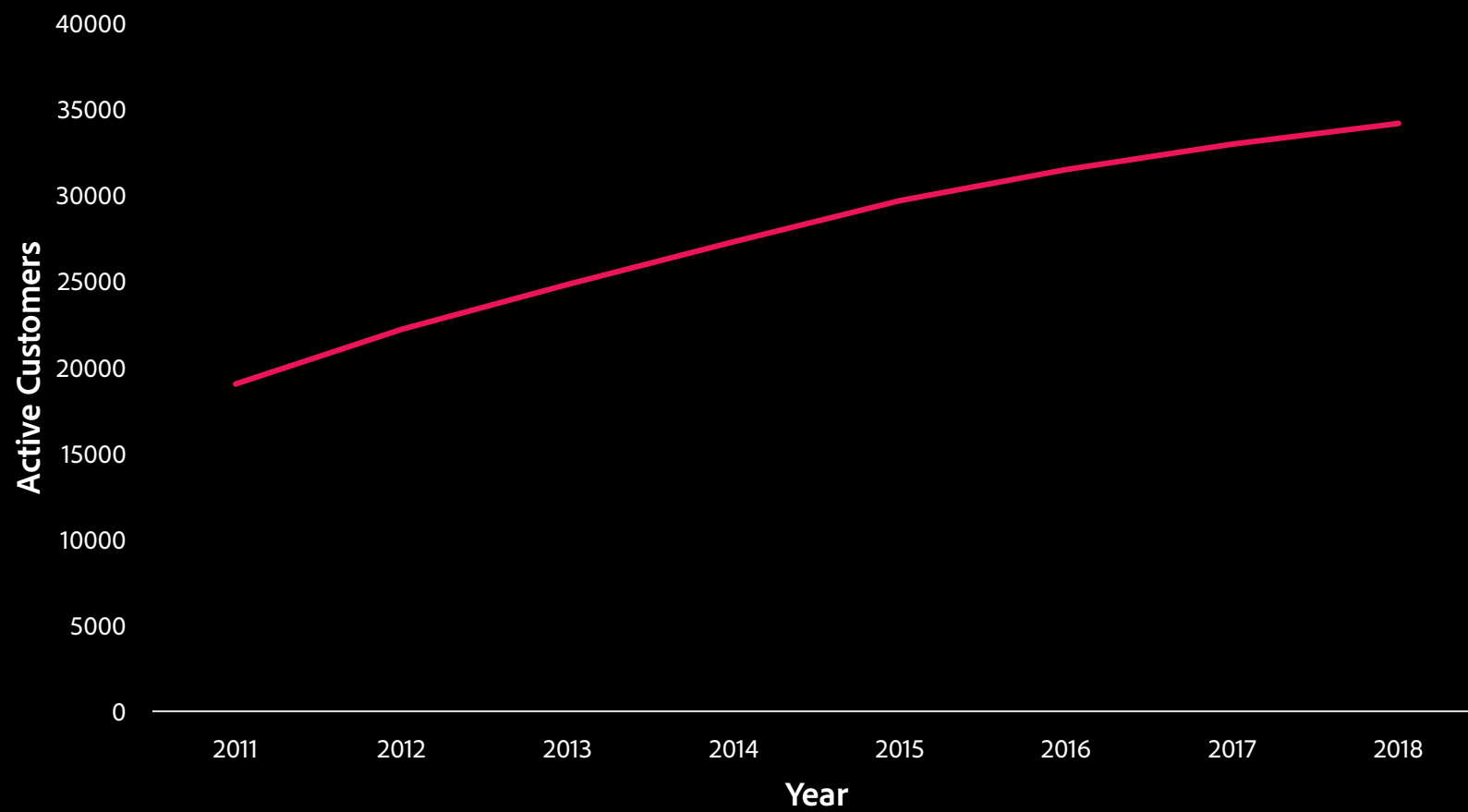


*Source: Adobe Internal data  
& Adobe usage survey*





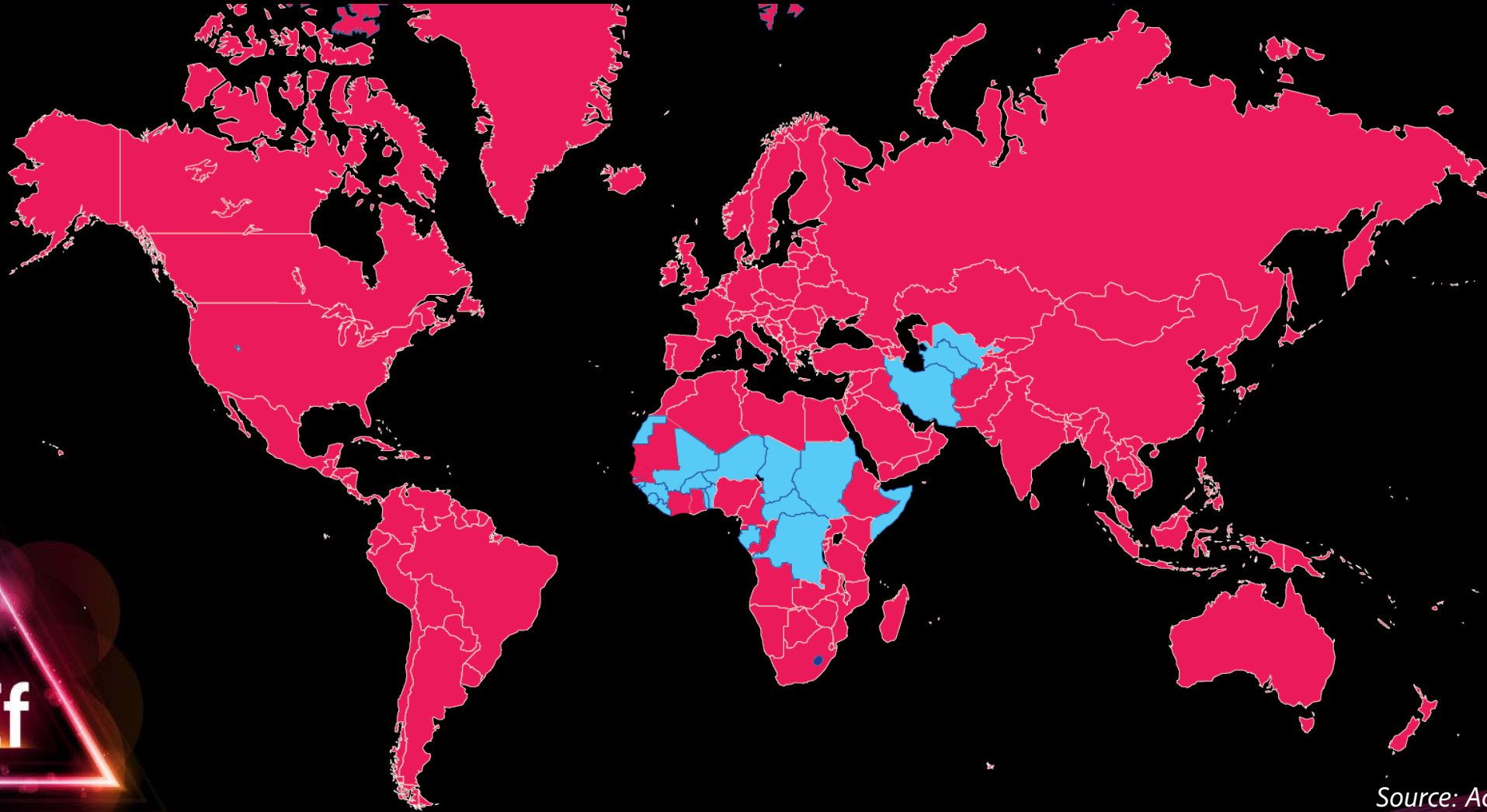
# Ever growing customer base



Source: Adobe Internal data



# Global Presence and Foothold



Source: Adobe Internal data



# Penetration of Adobe ColdFusion in Fortune 100 companies

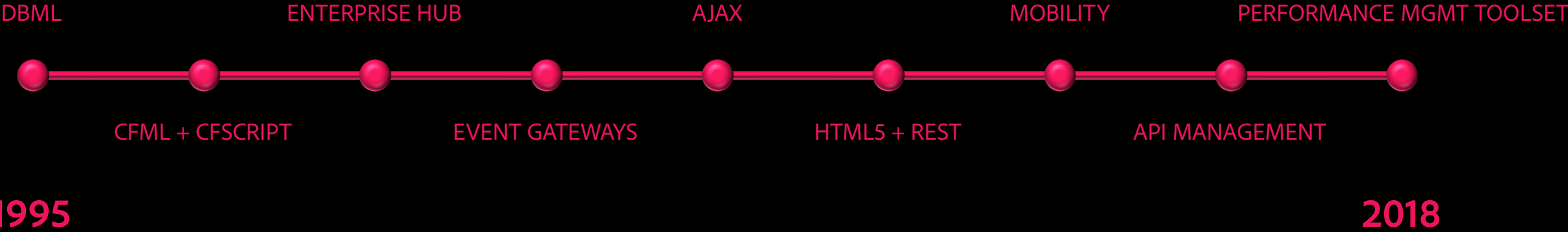
**100%**  
penetration across

- Aerospace & Defence
- Apparel
- Industrials
- Media
- Motor Vehicles & Parts
- Telecommunications
- Transportation
- Wholesalers





# While making hard things easy



1995

2018



# Progressing faster with needs

- Server gets faster with every release
  - ColdFusion 2016 30% faster than ColdFusion 11
  - ColdFusion 2018 45% faster than ColdFusion 11
- Features to scale your system is a part of every release
  - In ColdFusion 2016, sessions can be offloaded from memory to Redis
- API Management Platform in ColdFusion
  - Latency less than 30 ms even for billion API calls per day



# Security

➤ Platform with the least number of vulnerabilities

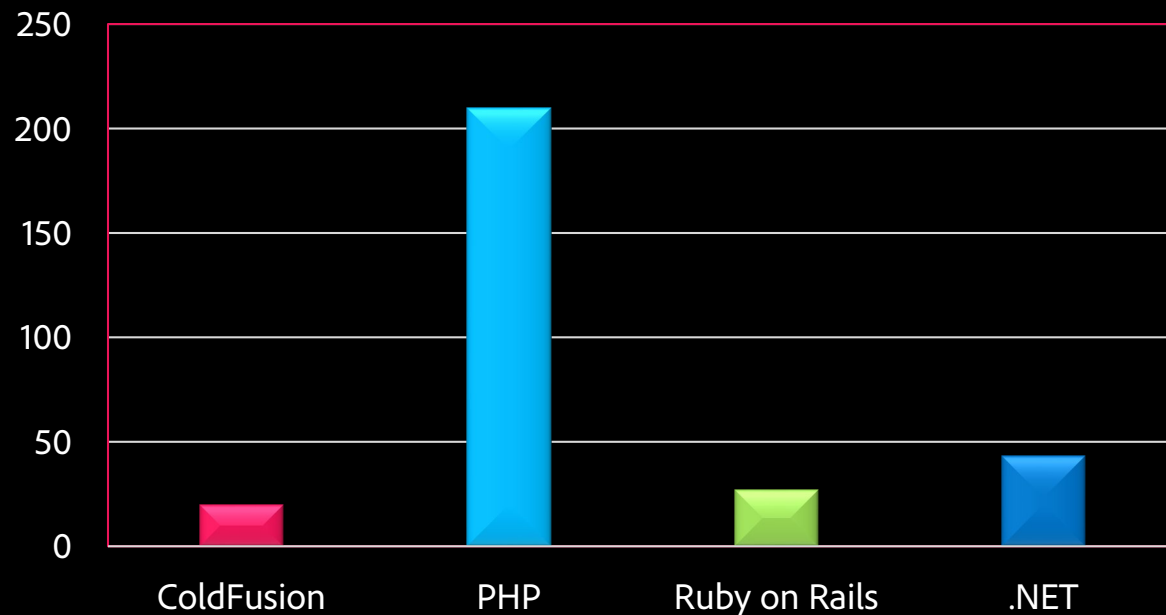


➤ With the auto-lockdown feature, locking down is no longer a tedious process.

➤ 8 hours of lock down time has been reduced to 1.5 minutes



2014-2018 Vulnerabilities



# Customer Success Stories



"Rapid development support, easy integration and security are important capabilities of Adobe ColdFusion"

– **Gianluca Giaccardi, Chief Product Officer, TESISQUARE**



"It would have taken upwards of two-and-a-half to three years to complete what we did in eight months with Adobe ColdFusion"

– **Eric Kratz, President, VSR Systems, Inc.**



"Quick building of applications and customized configurations"

– **Vijay Alluru, Vice President and Product Management Executive, Gensuite**

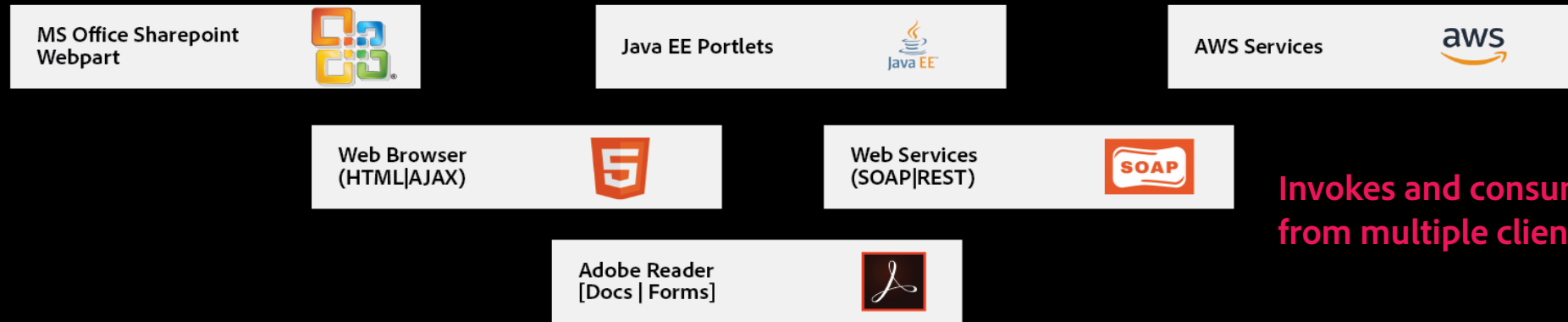


"ColdFusion code with Java classes to create a variety of applications with existing Java libraries"

– **Vishal Nath, CIO, ProActive Software**



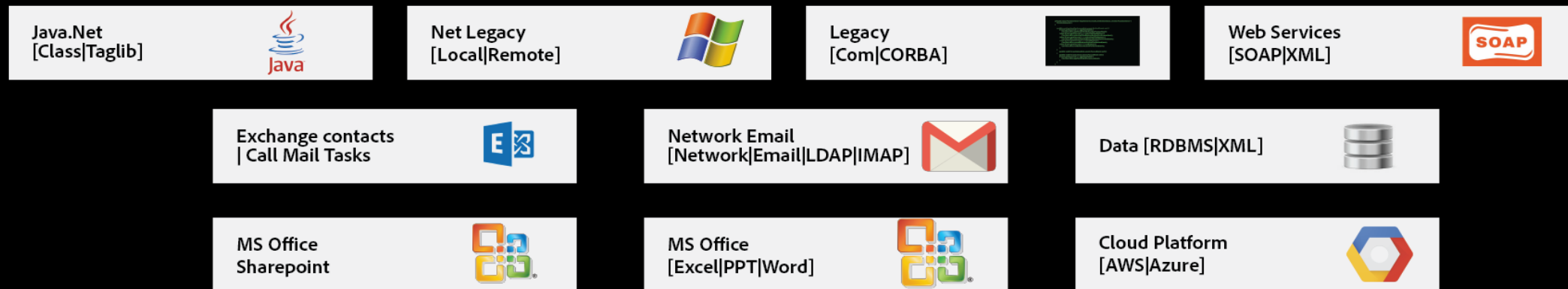
# Adobe ColdFusion Enterprise Hub



Invokes and consumes data from multiple clients



Integrates & enables latest technologies and toolsets



Works seamlessly in different environments



# Adobe ColdFusion – Java-based Application server that does it ALL



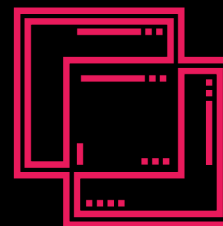
**Easy to learn  
and develop**



**Cross Platform  
Support**



**High Runtime  
Performance**



**Easy Integration  
with other IT  
environments**



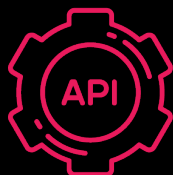
**Most Secure  
Language**



# Features of Adobe ColdFusion



AJAX



API



CACHING



CHARTING



CLUSTERING



DATABASE



DOCUMENTS



FILE HANDLING



FORMS



IMAGES



XML



MAIL



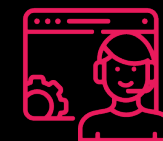
PDF



SCALING



USER DEFINED  
FUNCTIONS



WEB SERVICES





Adobe

# Thank You



Adobe