

Annual Report

of the

DEPARTMENT OF PARKS

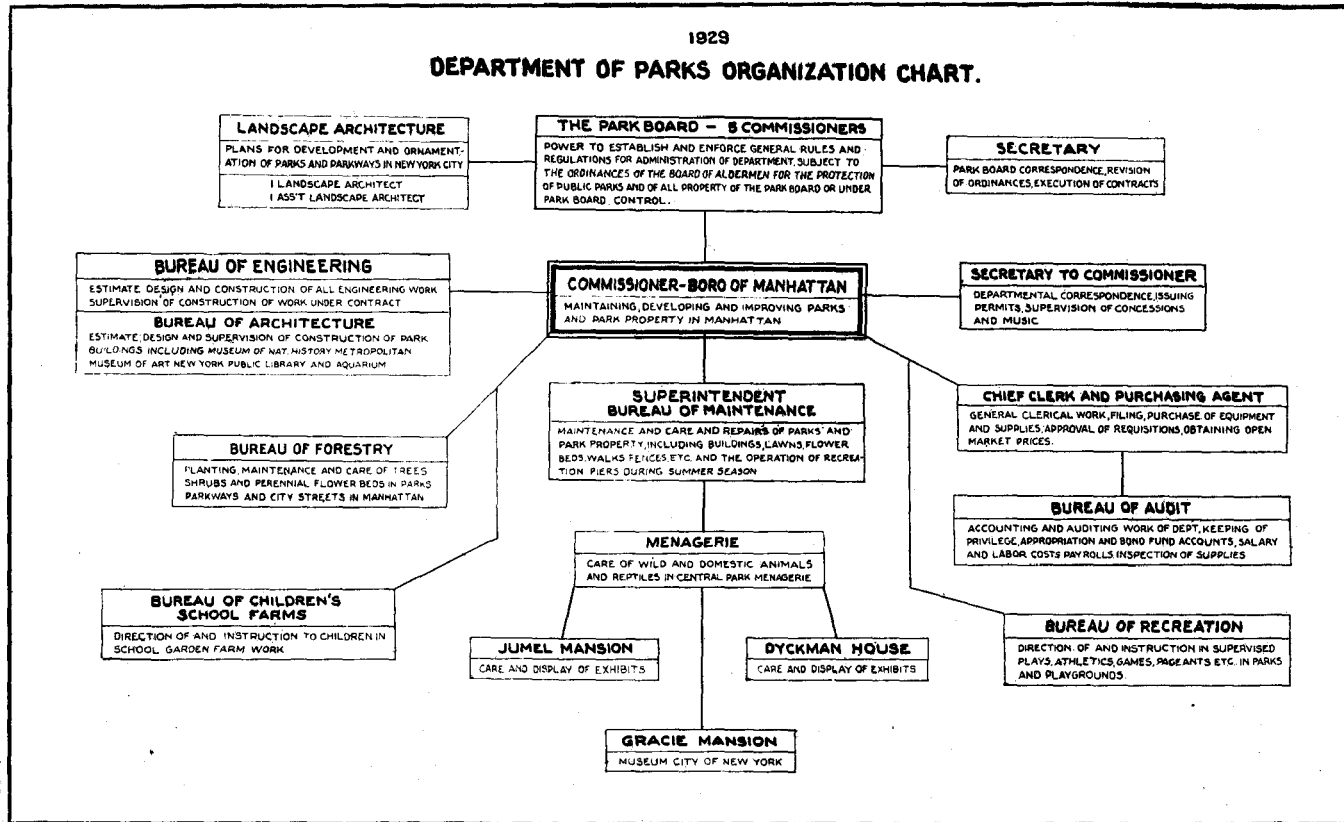
BOROUGH OF MANHATTAN

FOR THE YEAR

1928

1929

DEPARTMENT OF PARKS ORGANIZATION CHART.



HON. JAMES J. WALKER,
Mayor of The City of New York.

DEAR SIR:

I respectfully submit herewith the Annual Report
of the Department of Parks, Borough of Manhattan,
for the year ending December 31, 1928.

Yours respectfully,

WALTER R. HERRICK,
Commissioner of Parks,
Borough of Manhattan.

THE PARK BOARD

The Park Board, consisting of five commissioners, has jurisdiction over the park system of New York City. This Board establishes and enforces general rules and regulations for the administration of the Department, and subject to the ordinances of the Board of Aldermen, establishes and enforces rules and regulations for the government and protection of public parks and of all property in charge of the said Board or under its control, which rules and regulations so far as is practicable are uniform in all of the boroughs. Any person violating such ordinances is guilty of a misdemeanor. The Park Board advertises for and receives bids for work and supplies, lets contracts and has general power over all matters relating to the parks of the city, taken as a whole.

Each Commissioner of Parks, subject to the general rules and regulations established by the Board, has administrative jurisdiction over the parks within the borough to which he was appointed by the Mayor. The Commissioner of Parks for the Borough of Manhattan is President of the Park Board.

The offices of the Park Board are located in the Arsenal Building, Central Park, Borough of Manhattan.

The City of New York is divided for purposes of maintaining parks and parkways into the following borough divisions:

1. Borough of Manhattan
2. Borough of Brooklyn
3. Borough of The Bronx
4. Borough of Queens
5. Borough of Richmond.

The assent of the Landscape Architect of the Department of Parks is requisite to all plans and works or changes thereof, respecting the confirmation, development or ornamentation of any of the parks, squares or public places of the city. It is the duty of the Landscape Architect, from time to time, to prepare and submit to the Park Board plans for works or changes respecting the parks and parkways of the city.

REPORT OF THE COMMISSIONER

Since the publication of the last annual report, for the year 1927, progress in the rehabilitation, and improvement of the maintenance of the various parks in the Borough of Manhattan has been of a most encouraging nature. This does not mean to the self-satisfaction of the head of the department, but has been widely evidenced by the comment in the public press and the numerous commendations received from various civic organizations, as well as from many individuals. This can be attributed to three factors, namely, a large increase of funds to carry out the work; a better feeling among the employees, and an increased spirit of cooperation, resulting in a more effective park organization.

The program for the systematic and general rehabilitation of the parks was continued. Two of the most noteworthy features of this program were the rehabilitation of Central Park and of Riverside Park. For the former, the city appropriated the sum of \$871,420. The actual work of rehabilitation as recommended in the report of Mr. Hermann W. Merkel, in his survey of Central Park, was started and carried out under the supervision of the Landscape Architect, Mr. Jules V. Burgevin. Toward the latter part of October the first section of the park, extending from Fifth Avenue on the east, to Central Park West on the west; from 59th Street on the south and to 72nd Street on the north, was completed. This work included fertilization of lawns, pruning of trees and shrubbery, improvement of walks, intensive fertilization of the trees, new plantations of shrubbery and ground cover, and the construction of a natural shore line border of natural rock around the pond at 59th Street and Fifth Avenue.

There was included in the appropriation for the rehabilitation a sum for the installation of an artificial irrigation system in the park. During the fall of the year this work was started and is now well under way. There is no doubt that this will be one of the greatest factors in the improvement and upkeep of the park.

Some years ago there was a dilapidated, antiquated, inadequate tennis house at the tennis courts in Central Park. I think I am justified in saying that, fortunately, it was destroyed by fire.

The tennis courts had deteriorated through excessive usage and insufficient upkeep. As a part of the program it was proposed to rearrange and resurface the courts, and to provide an adequate drainage system. This work was commenced in the fall and when finished will give Central Park a set of courts which will bear favorable comparison with any park tennis courts in this country. It was also planned to construct a new tennis house. An appro-

priation was asked for and the sum of \$84,000 appropriated. This building will be ample as to capacity, simple but dignified in structure, and will harmonize with the landscaping of the park. It will contain rest rooms, lockers and shower baths.

The next noteworthy activity was that of the rehabilitation of the Riverside Park which, like Central Park, had seriously deteriorated. For this the city appropriated the sum of \$164,500. The actual work of rehabilitation was commenced during the spring and continued during the summer and fall. To give a brief resumé of the work, it consisted of increased plantations of trees, shrubs and ground-cover plants, spraying, pruning, cultivating and the rebuilding of the lawns.

There were also a number of what might be called mechanical improvements, or, more properly, engineering activities, which briefly referred to were: The construction of the balustrade fence along the Harlem River Driveway which was not only a practical but an artistic improvement.

The grading, drainage and construction of new walks and retaining wall, in order to make High Bridge Park a natural park.

The center plots on upper Broadway had long been a cause for complaint on the part of the public. An appropriation was obtained and the work of restoration of these plots was commenced.

A new comfort station was constructed and equipped in Colonial Park at a cost of approximately \$10,000.

The most needed of the improvements in the smaller parks was the re-landscaping and laying out of the southerly portion of Carl Schurz Park, south of East 86th Street. This plan consisted of an increased playground area, the filling in of the slope toward the East River, the construction of a wall to retain the fill, new plantations and landscaping, the removal of the old bandstand and the construction of a shelter house. For many years the northern end of this park had been in a condition of which the city could well be proud, but the southern portion suffered severely by comparison. When the new plan is carried out the city will have one of the finest of the smaller parks, extending along the East River front from 84th to 89th Street.

The department also organized a more systematic and intensive plan of maintenance. A few of the parks where accomplishments are most evident are:

Mount Morris, Morningside, Washington Square and City Hall. These, due to their locations and surroundings, showed more noticeably what proper and systematic maintenance can accomplish in a small park.

There were also increased activities in the recreational facilities, such as better supervision and modern and up-to-date apparatus.

The farm gardens showed an increased attendance, a large production of garden truck, and a more intelligent activity on the part of the small amateur farmers.

The Bureau of Engineering devoted itself not only to the repair of the more or less dilapidated structures in connection with park work, but also

to the preparation of plans and specifications for new engineering features and the total amount done can be safely estimated as three times that of the preceding three years.

It is the policy of the department to advocate such plans as will render the parks in the Borough of Manhattan as good as any parks in the country, and better than a great many. It must be appreciated, however, that a program of this character will necessarily take a number of years to accomplish, due first, to the magnitude of the work, and secondly, to the great cost of such work. It is, however, the further policy of the department to systematize the progress of its program so that it can apply to the city administration each year for sufficient funds to carry out the work for each succeeding year until the complete program is accomplished.

BUREAU OF LANDSCAPE ARCHITECTURE

CENTRAL PARK

Rehabilitation was begun in the spring of 1928. Work was started at the southerly end of the park, commencing at 59th Street working north and reaching from Fifth Avenue to Central Park West, and that portion of the park has been completed as far as 72nd Street. Thirty five hundred trees and fifty thousand shrubs and ground cover plants were planted and considerable cultivating, topsoiling and seeding was done. Practically the greater portion of that section of the park was remade. The irrigation system is nearing completion. The work of rehabilitation continued until December 31, 1928, at which time we were obliged to postpone activities.

RIVERSIDE PARK

Rehabilitation was started at 72nd Street and Riverside Drive during the spring of 1928, and continued through the summer and fall. A vast number of trees, shrubs and ground cover plants were planted. Existing trees and shrubs were sprayed, pruned, cultivated, and much topsoiling, fertilizing, ploughing, seeding of lawns, etc., as well as general repair work was accomplished.

All the completed areas in Riverside Park and Central Park have taken on a new verdure, indicating that the park system can be maintained on a high standard.

Following is a list of plans prepared by this Bureau:

Carl Schurz Park: Playground plan.

Inwood Hill Park: Plan showing proposed drive along north end of Inwood Hill Park in relation to proposed duct line.

Riverside Park: (135th to 155th Sts.) Plan for improvement of waterfront under enlarged plan for West Side Improvement.

Triangle at Edgecombe Avenue and 155th Street: Plan for improvement. Reports re Seventh Avenue approach to Macombs Dam Bridge.

Plan of Harlem Lane Park.

Isham Park: Proposed plan to subgrade west of Seaman Avenue, north of Isham Street.

Equestrian Ramp from East Drive at 96th Street to Bridle Path.

Highbridge Park: Plan for improvement of that portion south of 172nd Street.

Highbridge Park: Plan for new walk—184th to 190th Street. Plan for new walk—175th to 177th Street.

Thomas Smith Park: Rearrangement in connection with Express Highway.

Isham Park: Two new entrance walks.

Central Park: Plan for new walk along Central Park West, south of 66th Street.

Plan for new walk around north end of pond.
Plan for new entrance walk, 79th Street and Fifth Avenue.

Borough of Manhattan

Prepared plans for :

Inwood Hill Park ; Redesigning of Washington Square Park, Tompkins Square Park, Union Square Park, Bryant Park, Straus Park, Riverside Park Extension from 72nd Street to St. Clair Place.

Riverside Park Extension—72nd to 79th Streets—Possible treatment. Park treatment of land west of the New York Central Railroad tracks, between 143rd and 153rd Streets.

Preparing schedules for the rehabilitation of Central Park.

Prepared report for the rehabilitation of Riverside Park and Drive.

Reports on matters before Board of Standards and Appeals.

Prepared landscape and planting plan for Borough President of Manhattan for improvement of grounds around new Court House at Centre, Pearl and Worth Streets.

Prepared list of trees, shrubs, evergreens, vines and ground cover plants required for the rehabilitation of Central Park.

Borough of Brooklyn

Prepared plans for Shore Road Improvement, Marine Park—New plan 1239 acres, Carnarsie Park—New plan, Dyker Beach—New plan and golf course.

Prepared plans for six new playgrounds.

Prepared plan for picnic grounds and parking space in Prospect Park.

Prepared plans for McKinley Park.

Conferred with the Supervisor of Recreation about making certain changes in parks, part of same to be set aside for playground purposes.

Conferred with the Commissioner, Superintendent and the Engineer on the ground conditions of the parks and suggested remedy and treatment of same so that all trees, shrubs and plants shall be planted in a proper way to harmonize with the general aspect of the park.

Approval of all contract plans for new buildings, monuments, fencing, repaving, etc.

Borough of Queens

Approval and study of plans for the general improvement of various parks, acting in an advisory capacity in the preparation of the same. The

plans were prepared by the Assistant Landscape Architect of the Department.

Approval and study of plans for new greenhouses and storage buildings used in the department.

Maintenance Bureau: Conference with the Commissioner, Engineer, Superintendent, Assistant Landscape Architect whenever time permitted or whenever called upon by the Commissioner for such conference to advise or recommend changes for bettering and improving general conditions.

Borough of Richmond

Prepared plans for the improvement of Clove Lakes. New unnamed park at Elm Street, Port Richmond. Willow Brook Park and playground. Billop House Park.

Preparation and approval of plans for Silver Lake Park Improvement. Approval and study of greenhouse for Silver Lake Park.

Approval and study of plans for proposed golf links in Silver Lake Park.

Conference with the Commissioner of Parks, whenever time permitted, to go over the general workings of the department, acting in an advisory capacity relative to landscaping and proper treatment of park lands.

Also selecting proposed lands suitable for park purposes with the Commissioner and Consulting Engineer of the borough.

Most of these parcels are now located on the city map to be taken up by the Board of Estimate and Apportionment.

Borough of the Bronx

Approval of plans for golf house, Mosholu Links; also selection of site for same.

Modification of plans for Joyce Kilmer Park, 161st Street and Grand Concourse.

Modification of original design of park, 161st Street, River and Jerome Avenues. Acting in an advisory capacity with Department Engineers for the general improvement of Bronx Parks.

Approved plans for 238th Street Viaduct; Bronx River Parkway; approved and studied designs for several comfort stations located in various parts of the borough.

Approved plans and site for additional greenhouses to be placed in Van Cortlandt Park nurseries; prepared plan for park layout and treatment, bounded by Bryant Avenue, Aldus Street, Longfellow and Whitlock Avenues.

Prepared plan for the general improvement of Pelham Bay Park; re-alignment and widening of Pelham Bay Parkway and Baychester Avenue; Memorial Grove; Plaza and general landscaping in the area bounded by Burr Avenue, Eastern Boulevard, Hilder Avenue and Pelham Bay Parkway North.

BUREAU OF FORESTRY

REHABILITATION OF RIVERSIDE PARK AND RIVERSIDE DRIVE

The outstanding accomplishments of the Bureau of Forestry this year were made significant through the appropriation of \$164,427.25 for the rehabilitation and general improvement of Riverside Park and Riverside Drive.

There was \$75,975.25 chargeable against this appropriation for the purchase of trees, shrubs, vines, top soil, sod and fertilizer; also \$24,949.50 for additional labor to carry out the recommendations made by the Landscape Architect in his survey for the rehabilitation of this park for the horticultural and arboricultural work of the restoration.

On June 18th of this year 19 additional men were assigned to prune, fertilize, cultivate trees and shrubs, grade lawns and resoil areas where erosions prevailed and any other work required to carry out the recommendations of the Landscape Architect.

TREES:

All dead and dangerous trees were removed, stumps dug out and disposed of to the amount of 100 trees over 24" in diameter and 197 trees 24" and under this size.

PRUNING:

All the trees in Riverside Park and on Riverside Drive from 72nd Street to 158th Street were carefully pruned, and all dead and interfering branches removed. The number so treated amounted to 2315 trees.

FERTILIZING:

Old and well-tried methods which have proven safe and have gained the best results have been adopted for renovating the large old trees in Riverside Park and on Riverside Drive by the use of an Ingersoll-Rand Compressor Drilling Machine to make a number of holes 2 feet deep around the base of the trees, extending out to points where the feeding roots are located, and then placing therein a good quality of commercial fertilizer. By this procedure the nutrition is quickly and readily carried down to points where the deeper and more active roots can be reached. The trees so treated amounted to 3723. The very large trees were supplied with not less than 60 lbs. of this fertilizer to each tree, and in some instances 25 lbs. more. Further fertilization was anticipated by cultivating around the trees where it was possible to do so, and mulching this area with a well decomposed quantity of cow manure. 1707 trees were so treated.

SPRAYING:

Spraying of the trees for the elimination of insect pests was extensively carried on during the summer and fall. Most of the trees were sprayed several times. Over 5892 trees were so treated during this period.

TREE SURGERY:

There were a number of cavities in the trees in Riverside Park that required treatment. These cavities were cleaned out, an antiseptic applied, and filled scientifically with a cement filling. Many trees along the Drive from 72nd Street to 158th Street have been damaged by careless and reckless automobile drivers. All of these scarred trees have been treated, cleaned off, sterilized and painted with a good quality of tree paint. Number of trees so treated this year was 78 on which there were 225 scars.

PREPARATION OF TREE PITS:

There were 302 tree pits on Riverside Drive between 72nd Street and 158th Street excavated 3 ft. deep 6' x 6' in size, all old soil removed and refilled with a good quality of top soil in readiness for the new trees, recommended to be planted next spring. The amount of material removed was 1208 cubic yards and the same amount of top soil required to refill these tree-pits.

TRANSPLANTED TREES:

There were only 78 trees transplanted this fall, owing to the extensive amount of time spent on the other activities of the restoration work which was required to be done before the planting of trees and shrubs could be accomplished.

SHRUBS:

All the shrubs in Riverside Park from 72nd Street to 96th Street were pruned, most of which were very large and in bad condition. A great deal of dead wood and a number of large dead and overgrown shrubs had to be removed and new ones planted in their place. A great number of shrubs on the lawns above 96th Street in the park and along Riverside Drive were pruned. The total number of shrubs so treated was 14,107, and 152 large old shrubs removed and replaced by the same amount of new shrubs.

CULTIVATED AND FERTILIZED:

The shrub plantations in Riverside Park were in a very bad condition and required a great deal of labor spent in cultivating and resoiling of erosions. Most of these shrubs are large and require a large amount of fertilizer to rejuvenate the soil. Most of the shrub plantations in Riverside Park are on



PRUNING AND LOWERING OF LARGE LIMBS
THE MALL, CENTRAL PARK

the slopes, consequently the rainfalls of many years have caused erosions through the plantations as well as through the open areas on these slopes. The shrubs in these plantations treated by fertilizing with Bone Meal and Sheep Manure and mulching with decomposed Cow Manure, amounted to 12,083, which covered an area of 46,167 sq. ft. The soil used to fill in erosions in this area of shrub plantations was approximately 48,000 cubic feet of top soil.

TRANSPLANTED:

1573 large shrubs were transplanted from crowded plantations to replace those dead shrubs that were removed from other plantations in Riverside Park.

SPRAYING:

The shrubs as well as the trees were thoroughly sprayed for the elimination and control of the insect pests during the summer and early fall of this year.

RESTORATION OF LAWNS:

The restoration of lawns and areas on the slopes preparatory to reseeding with grass, planting with shrubs and ground cover plants was the most arduous activity of all the work done in the rehabilitation of Riverside Park and Riverside Drive. The resoiling of the many erosions throughout the park required a great deal of time to correct. The areas had to be dug up and the top-soil used to fill these erosions had to be handled several times before it was finally graded over the affected areas, due to the fact that the many stairways in the park prevented the hauling of soil by trucks close to the place where it was to be distributed. The total area so treated covered 295,842 sq. ft. in Riverside Park and 120,628 sq. ft. on the strips and lawns along Riverside Drive from 72nd to 145th Street.

The quantity of top-soil used for this restoration amounted to over 5,000 cubic yards.

SODDING STRIPS, RIVERSIDE DRIVE:

The parking strips between the north and south driveways and bridle path and wall from 103rd Street to 122nd Street were resoiled and sodded. These areas were dug up, a foot of the old soil removed and replaced by a foot of a good grade of top-soil, fertilized and sodded. It required 31,462 sq. ft. of sod to cover this area.

FERTILIZATION :

All the lawns in Riverside Park and along Riverside Drive were heavily fertilized in proportion to 1,000 lbs. of Bone Meal and Sheep Manure to the acre. The records show that 57 tons of this fertilizer were distributed over all these lawns this fall.

ROUGH STONE CURBS :

In the course of the work of restoration we found many places where it was necessary to place a rough curb or retaining wall to keep the new restored areas from being washed out over the walks. The total lineal feet of curb constructed amounted to 1839 ft. in various heights of 12" to 36".

REHABILITATION OF RIVERSIDE PARK AND RIVERSIDE DRIVE

Total itemized list of the Horticultural work accomplished in 1928

TREES :

| | |
|--|-------------|
| Removed dead and dangerous trees..... | 397 |
| Pruned trees | 2,315 |
| Fertilizing by boring process..... | 3,723 trees |
| Mulched with manure..... | 1,707 trees |
| Cultivated during the season..... | 2,787 trees |
| Spraying for the elimination of insects..... | 5,892 trees |
| Removed egg-masses from..... | 223 trees |
| Tree Surgery, filled cavities in..... | 174 trees |
| Scraped and treated wounds..... | 78 trees |
| Transplanted large trees..... | 39 |

SHRUBS :

| | |
|--|---------------|
| Pruned | 14,107 shrubs |
| Removed dead and overgrown shrubs..... | 152 shrubs |
| Fertilizing with commercial fertilizer..... | 1,584 shrubs |
| Mulched with decomposed manure..... | 4,275 shrubs |
| Sprayed several times during the season..... | 7,720 shrubs |
| Transplanted in the fall..... | 1,573 shrubs |
| Planted ground cover plants..... | 2,700 plants |

FERTILIZED AND RESEOLED :

| | |
|--|---------|
| Total area of sq. ft. resoiled in park..... | 295,842 |
| Total area of sq. ft. resoiled in drive..... | 120,628 |
| Total area of sq. ft. mulched with manure around trees..... | 46,167 |
| Total area of sq. ft. mulched with manure around shrubs..... | 54,490 |
| Total area of sq. ft. sodded in the park..... | 8,395 |
| Total lineal feet of curb laid to prevent erosions..... | 1,839 |
| Total area in sq. ft. around trees on Riverside Drive mulched with decomposed manure | 2,700 |
| Total area of sq. ft. sodded on the Drive..... | 31,462 |
| Total area of sq. ft. manured around shrubs, on lawns on drives..... | 6,946 |

THE MATERIAL USED DURING THE PROGRESS OF THIS WORK :

| | |
|--------------------------------|----------------|
| Cow manure in cubic yards..... | 3,696 |
| Top soil in cubic yards..... | 6,258 |
| Bone meal in tons..... | 50 tons |
| Sheep manure in tons..... | 50 tons |
| Sod in sq. ft. | 39,857 sq. ft. |

TOTAL PARK ACTIVITIES—BUREAU OF FORESTRY

| KIND OF WORK | NUMBER | DAYS |
|--|--------|-------|
| Pruned trees..... | 16900 | 5886 |
| Pruned shrubs..... | 55531 | 2440 |
| Removed dead trees..... | 1547 | 1983 |
| Removed dead shrubs..... | 2347 | 172½ |
| Removed dead trees—66th St. Nursery..... | 57 | 3 |
| Sprayed trees..... | 78733 | 1083½ |
| Sprayed shrubs..... | 68214 | 369½ |
| Sprayed beds..... | | 5½ |
| Planted trees..... | 553 | 465 |
| Planted shrubs..... | 960 | 105 |
| Planted vines..... | 2921 | 45 |
| Planted seeding trees (Riverside)..... | 200 | 9 |
| Planted ivy..... | 1125 | 12 |
| Planted crocus..... | 1000 | 1½ |
| Planted beds..... | | 310½ |
| Transplanted trees..... | 176 | 138 |
| Transplanted shrubs..... | 2083 | 276½ |
| Cultivated trees..... | 24899 | 1570 |
| Cultivated shrubs..... | 42019 | 1204 |
| Cultivated beds..... | | 456 |
| Mulched trees..... | 11709 | 611½ |
| Mulched shrubs..... | 18374 | 496½ |
| Mulched beds..... | | 74 |
| Cleaned trees..... | 11296 | 716 |
| Cleaned shrubs..... | 4685 | 85 |
| Cleaned beds..... | | 634 |
| Fertilized trees..... | 44 | 5 |
| Fertilized shrubs..... | 349 | 11 |
| Fertilized lawns..... | | 78 |
| Fertilized beds..... | | 3 |
| Staked trees..... | 1482 | 100 |
| Binders on trees repaired..... | 2422 | 152½ |
| Repaired trees for scars..... | 216 | 80½ |
| Erected tree guards..... | 23 | 2½ |
| Repaired tree guards..... | 38 | 8 |
| Removed tree guards..... | 5 | ½ |
| Erected bird houses..... | 108 | 11 |
| Treated cavities..... | 241 | 148 |
| Planted trees (Green Memorial)..... | 13 | 22 |
| Planted shrubs (Green Memorial)..... | 200 | 7 |
| Restoration (Green Memorial)..... | | 62 |
| Restoration and seeding of lawns..... | | 2559 |
| Protection of park property..... | | 87 |
| Clerical work at Nursery (66th Street)..... | | 631 |
| Care of 79th St. Greenhouse..... | | 67 |
| Storing spraying materials..... | | 53 |
| Mixing spraying materials..... | | 41½ |
| Storing fertilizers..... | | 73½ |
| Mixing fertilizers..... | | 54 |
| Mixing and spreading compost..... | | 50 |
| Rehabilitation of Central Park..... | | 4269 |
| Removed trees to nursery for transplanting..... | 35 | 12 |
| Marking dead trees for removal..... | | 3 |
| Taking census of trees..... | | 4 |
| Removed plants from Isham for transplanting..... | | 3 |
| Mowing weeds around plantations..... | | 44 |
| Watered trees, shrubs, beds, etc..... | | 31 |
| Cleaned spraying machines..... | | 12½ |
| Repaired and sharpened tools..... | | 3 |
| Repaired fence..... | | 15½ |
| Erected fence..... | | 4 |
| Loaded mold for planting..... | | 18 |
| Removal of snow..... | | 665 |
| Taking inventory of tools..... | | 2 |

| | |
|------------------------------------|--------|
| Mixing grass seed..... | 2 |
| Cutting burlap..... | 2 |
| Put hemlock over ivy at Plaza..... | 15 |
| | <hr/> |
| Total days worked..... | 28,564 |

PLANTS GROWN IN 79TH STREET NURSERY, CENTRAL PARK:

- 2200 Ivies in pots and in cold frames
- 4300 Ivies cuttings in plots
- 2700 Ivies cuttings in sand bench
- 1700 Ivies cuttings in pots in greenhouse
- 1100 Polygonums vines in cold frames
- 1500 Lonicera Halliana in pots
- 300 Pachysandra in cold frames
- 1000 Ligustrum (Golden Privet) 12" to 24"
- 300 Delphinium Formosa (herbaceous plants)

PLANTS GROWN IN ISHAM PARK—NURSERY AND GREENHOUSES FOR USE IN PARKS

- 3500 English Ivy 3" to 4" pots
- 3000 Lonicera Halliana in pots
- 150 Ampelopsis Veitchii (Boston Ivy) in pots
- 3500 Pachysandra (field grown)
- 2000 Vinca Minor (Myrtle) field grown
- 2000 Euonymus Japonica (field grown)
- 1000 English Ivy (field grown)
- 2700 Lonicera Halliana (field grown)
- 1000 Aralia Pentaphilla (field grown)
- 500 Lycium (Matrimony vine) field grown

LIST OF INSECTICIDES USED

| | |
|------------------------------|-----------|
| Arsenate of Lead | 7300 lbs. |
| Calcium Arsenate | 500 " |
| Fish Oil Soap | 2100 " |
| Kerosene Emulsion | 500 gals. |
| Nicotine | 117 " |
| Sulco V. B. | 1635 " |
| Creosote | 95 " |
| Bordeaux Mixture | 2174 lbs. |
| Volck | 252 gals. |
| Carbon Bisulphides | 5 lbs. |
| Carbon Tetra Chlorides | 3 " |
| Coal Tar | 183 gals. |
| Kayso | 560 lbs. |

LIST OF FERTILIZERS USED

| | |
|------------------------|--------------|
| Bone Meal | 247,494 lbs. |
| Hydrate of Lime | 217,200 " |
| Leunasalpeter | 2,000 " |
| Cow Manure | 213,700 " |
| Tankage Nitrogen | 61,500 " |
| Floranid | 4,435 " |
| Sheep Manure | 708,200 " |

TOTAL SMALL PARK ACTIVITIES

| KIND OF WORK | NUMBER | DAYS |
|-----------------------------|--------|------|
| Pruned trees | 5776 | 1666 |
| Pruned shrubs | 27255 | 1109 |
| Removed trees (dead) | 625 | 802 |
| Removed shrubs (dead) | 1187 | 74 |
| Sprayed trees | 30223 | 387 |
| Sprayed shrubs | 27409 | 124 |
| Planted trees | 495 | 283 |
| Planted shrubs | 479 | 44 |
| Planted crocus | 1000 | 1½ |

| KIND OF WORK | NUMBER | DAYS |
|---|--------|-------|
| Planted vines | 500 | 4 |
| Planted beds—Perennials | 200 | 64½ |
| Planted Seedling trees | 12 | 9 |
| Transplanted trees | 187 | 18 |
| Transplanted shrubs | 2549 | 237 |
| Mulched trees | 2548 | 141½ |
| Mulched shrubs | | 71 |
| Mulched beds—perennials | 10319 | 10 |
| Cultivated trees | 17450 | 654½ |
| Cultivated shrubs | | 498 |
| Cultivated beds—perennials | 1368 | 41 |
| Cleaned trees | 1190 | 87½ |
| Cleaned shrubs | | 16½ |
| Cleaned beds—perennials | 19 | 39 |
| Fertilized trees | 249 | 2 |
| Fertilized shrubs | | 8 |
| Fertilized beds—perennials | 11 | 43 |
| Erect guards | 558 | 1 |
| Staked trees | 999 | 43 |
| Birders on trees | 115 | 56½ |
| Repaired trees | 85 | 17½ |
| Erected bird houses | 73 | 6 |
| Repaired cavities | 10 | 32 |
| Repaired guards | 5 | 3 |
| Removed guards | | ½ |
| Restoration and seeding of lawns | | 2109½ |
| Protection of park property | | 2 |
| Watering trees, shrubs, beds, etc. | | 7½ |
| Erected fences | | 4 |
| Repaired fences | | 7½ |
| Removed plants from Isham for transplanting | | 3 |
| Mowing weeds around plantations | | 17 |
| Removal of snow from walks | | 546 |
| Total days worked | | 9284 |

TOTAL ACTIVITIES ON CITY STREETS

| | | |
|---|--------|-------|
| Pruned trees | 3,069 | 1,214 |
| Pruned shrubs | 188 | 10½ |
| Pruned vines | 1,895 | 39 |
| Removed trees (dead) | 693 | 781 |
| Removed shrubs (dead) | 20 | 2½ |
| Sprayed trees | 16,142 | 265 |
| Sprayed shrubs | 1,248 | 9½ |
| Planted trees | 179 | 131 |
| Planted shrubs | 115 | 9 |
| Planted crocus | 8,500 | 13 |
| Transplanted trees | 4 | 4 |
| Transplanted shrubs | 77 | 5 |
| Mulched trees | 1,569 | 74 |
| Mulched shrubs | 100 | 3 |
| Cultivated trees | 3,919 | 273 |
| Cultivated shrubs | 515 | 15½ |
| Cultivated beds—Perennials | | 2 |
| Cleaned trees | 1,586 | 139 |
| Fertilized trees | 1,592 | 219 |
| Re-soiled trees | 165 | 43 |
| Repaired trees | 107 | 31 |
| Repaired cavities | 33 | 30 |
| Staked trees | 315 | 22½ |
| Birders on trees | 804 | 44 |
| Repair tree guards | 9 | 2 |
| Remove tree guards | 21 | 3 |
| Removed trees from Park Ave. to Nursery | 131 | 40 |
| Removed trees from 5th Ave. to Nursery | 14 | 7 |

| | | |
|---|-------|-------|
| Planted trees on 5th Ave. (Rehabilitation)..... | 51 | 96 |
| Planted trees on Riverside Extension—no cost—by Foreman Ryan..... | 31 | |
| Restoration of lawns on Broadway and Park Avenue plots..... | | 810 |
| Removal of snow from crossings..... | | 129½ |
| Mowing grass and cleaning lawns in centre plots..... | | 1,502 |
| Taking new census of all street trees..... | | 86 |
| Watering trees, shrubs, beds, etc..... | | 67 |
| Inspecting of replacements of trees by contractors (subways)..... | | 114 |
| Repaired fence..... | | 2 |
| Total days worked..... | | 62,38 |

TREES PLANTED BY CITIZENS ON STREETS

| | | |
|---|-------------------|-------------|
| 132 East 72nd Street..... | 1 Oriental Plane | Replacement |
| 74th Street Riverside Drive (Schwabs).... | 3 Norway Maples | " |
| 121 East 65th Street..... | 1 Oriental Plane | " |
| East 70th Street..... | 8 " " | " |
| 124 East 65th Street..... | 1 " " | " |
| 122 East 65th Street..... | 1 " " | " |
| 49 East 79th Street..... | 1 " " | " |
| 150 East 61st Street..... | 1 Norway Maple | " |
| 121 East 81st Street..... | 1 Ginkgo | " |
| 463 East 57th Street..... | 1 Oriental Plane | " |
| Madison Avenue, 36th and 37th Streets.... | 7 " " | " |
| 32 West 96th Street..... | 1 " " | " |
| 72nd Street, East of Madison Avenue..... | 3 " " | " |
| S. E. Cor. of 57th Street, Sutton Place.... | 2 Pin Oaks | " |
| 943 Lexington Avenue..... | 4 Ginkgos | " |
| 156 158-162-169-175 East 70th Street..... | 7 Oriental Planes | " |
| 17-19 West 54th Street..... | 2 Ginkgos | " |
| 136-137 East 95th Street..... | 2 Pin Oaks | " |
| 333 East 57th Street..... | 3 Oriental Planes | " |
| 179-181 East 79th Street..... | 2 " " | " |
| 21 East 90th Street..... | 3 Ginkgos | " |
| 25 Sutton Place..... | 2 Norway Maples | " |
| 57th Street, Sutton Place, N. W. Cor..... | 2 " " | " |
| 127 East 79th Street..... | 2 Oriental Planes | " |
| 129 East 79th Street..... | 1 Ginkgo | " |
| 117 East 72nd Street..... | 4 Oriental Planes | " |
| 160 East 72nd Street..... | 3 " " | " |
| 470 West End Avenue..... | 1 " " | " |
| 444 East 57th Street..... | 1 " " | " |
| 121 East 62nd Street..... | 2 " " | " |
| 455 East 57th Street..... | 3 " " | " |
| 447 East 57th Street..... | 3 " " | " |
| 110-114-175 East 70th Street..... | 3 " " | " |
| New planting..... | | 35 |
| Number of replacements..... | | 47 |
| Total trees planted..... | | 82 |

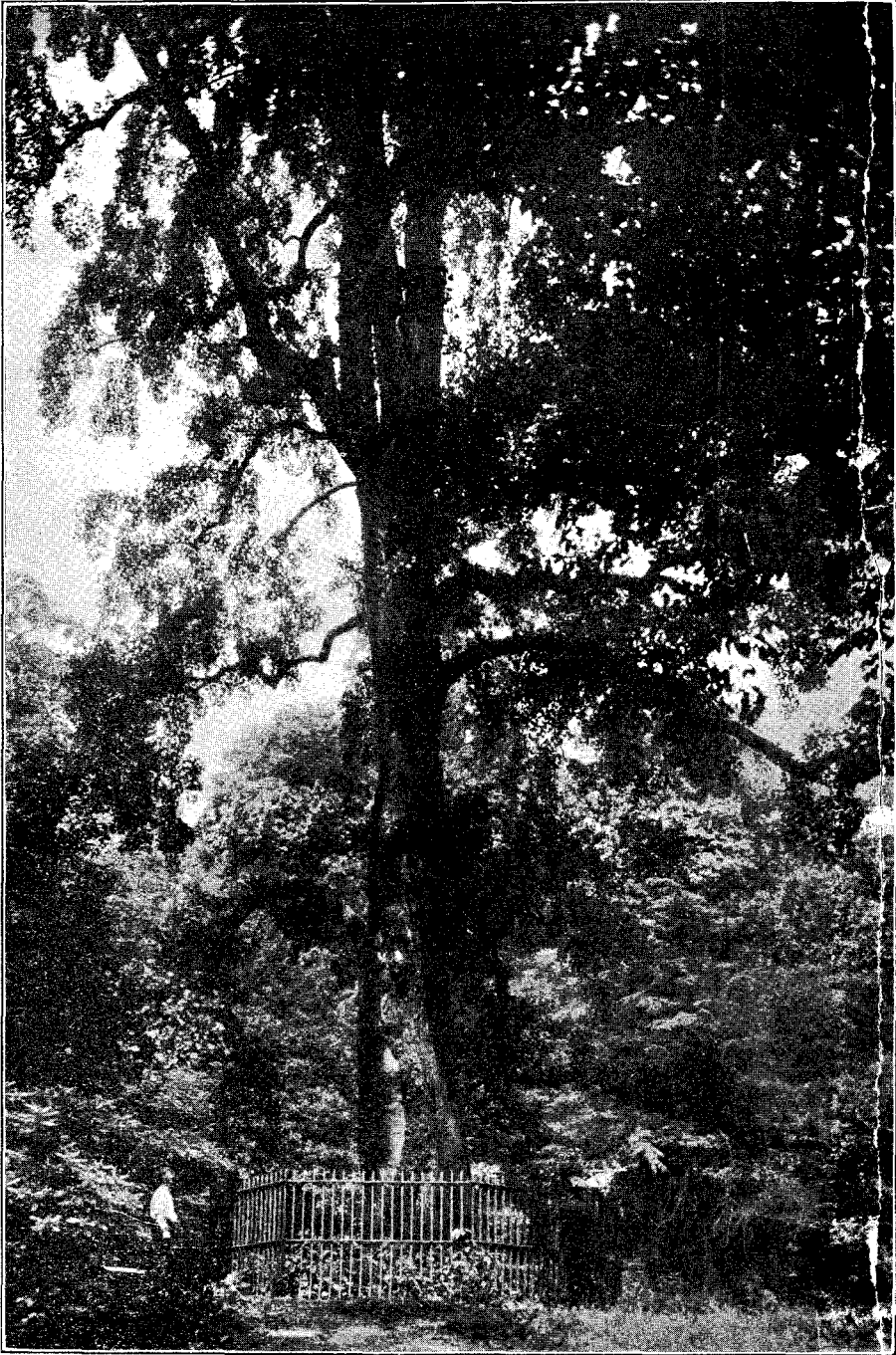
TOTAL CENTRAL PARK ACTIVITIES

| KIND OF WORK | NUMBER | DAYS |
|--------------------------------------|--------|-------|
| Pruned trees..... | 11,124 | 4,220 |
| Pruned shrubs..... | 28,276 | 1,331 |
| Removed dead trees..... | 922 | 1,181 |
| Removed dead shrubs..... | 1,160 | 97 |
| Removed dead trees from nursery..... | 57 | |
| Sprayed trees..... | 48,510 | 69 |
| Sprayed shrubs..... | 25,695 | 24 |
| Sprayed beds—perennials..... | | 57 |
| Planted trees..... | 58 | 182 |
| Planted shrubs..... | 481 | 61 |
| Planted ivy..... | 1,125 | 12 |

| | | |
|--|--------|--------|
| Planted vines | 2,421 | 41 |
| Planted beds—perennials | | 246 |
| Transplanted trees | 164 | 120 |
| Transplanted shrubs | 276 | 39½ |
| Cultivated trees | 14,580 | 915½ |
| Cultivated shrubs | 24,569 | 706 |
| Cultivated beds—perennials | | 415 |
| Mulched trees | 9,160 | 470 |
| Mulched shrubs | 15,826 | 425½ |
| Mulched beds—perennials | | 64 |
| Cleaned trees | 9,928 | 635½ |
| Cleaned shrubs | 3,495 | 68½ |
| Cleaned beds—perennials | | 595 |
| Fertilized trees | 25 | 3 |
| Fertilized shrubs | 100 | 3 |
| Fertilized lawns | | 35 |
| Fertilized beds—perennials | | 3 |
| Staked trees | 924 | 57 |
| Binders on trees | 1,423 | 96 |
| Repaired trees | 101 | 63 |
| Erected tree guards | 12 | 1½ |
| Repaired tree guards | 28 | 5 |
| Repaired cavities | 168 | 116 |
| Erected bird houses | 23 | 5 |
| Planted trees (Green Memorial) | 13 | 22 |
| Planted shrubs (Green Memorial) | 200 | 7 |
| Restoration (Green Memorial) | | 62 |
| Restoration and seeding of lawns | | 449½ |
| Removed trees for transplanting | 35 | 12 |
| Clerical work at 66th Street Nursery | | 631 |
| Protection of park property | | 85 |
| Care of 79th Street Greenhouse | | 67 |
| Storing spraying materials | | 53 |
| Mixing spraying materials | | 41½ |
| Loading and storing fertilizers | | 73½ |
| Mixing fertilizers | | 54 |
| Rehabilitation work | | 4,269 |
| Mixing and spreading compost | | 50 |
| Marked dead trees for removal | | 3 |
| Taking census of trees | | 4 |
| Mowing weeds around plantations | | 27 |
| Watering trees, shrubs, beds, etc. | | 23½ |
| Cleaned spraying machines | | 12½ |
| Repaired and sharpened tools | | 3 |
| Repaired fence | | 8 |
| Loaded mold for planting | | 18 |
| Removal of snow | | 119 |
| Taking inventory of tools | | 2 |
| Mixing grass seed | | 2 |
| Cutting burlap | | 2 |
| Putting hemlock over ivy at Plaza | | 15 |
| Total days worked..... | | 19,280 |

ABINGDON SQUARE PARK—TOTAL ACTIVITIES

| KIND OF WORK | NUMBER | DAYS |
|----------------------------------|--------|------|
| Pruning shrubs | 235 | 1 |
| Remove trees | 1 | 1 |
| Spray trees | 45 | ½ |
| Spray shrubs | 50 | ⅓ |
| Planted trees | 19 | 12 |
| Planted Xmas trees | 1 | 3 |
| Planted beds (Crocus 1000) | | 1½ |
| Cultivate trees | 45 | 3 |
| Cultivate shrubs | 101 | 3 |
| Mulch trees | 38 | 1½ |



TULIP TREE
(LIRIODENDRON TULIPIFERA)

Circumference 19 feet, age about 242 years. Hendrik Hudson Memorial, Inwood Hill Park. Largest tree on Manhattan Island; located close to the inlet on the northeast side of park coming in from 207th Street.

Hendrik Hudson entered this inlet in 1609 and may have met the Indians here. The many years accumulation of oyster shells, arrow heads and other relics which have been dug up at this location leads us to believe that this was a favorite camping ground of the Indians.

| | | |
|-----------------------------|-------|---------------|
| Mulch shrubs | 6 | $\frac{1}{4}$ |
| Clean beds—herbaceous | | $\frac{1}{8}$ |
| Stake trees | 16 | 2 |
| Total days worked..... | | <u>29</u> |

JOHN F. AHEARN PARK—TOTAL ACTIVITIES

| KIND OF WORK | NUMBER | DAYS |
|------------------------|--------|---------------------------------|
| Spraying trees | 8 | $\frac{1}{4}$ |
| Total days worked..... | | <u>$\frac{1}{4}$</u> |

BEACH STREET PARK—TOTAL ACTIVITIES

| KIND OF WORK | NUMBER | DAYS |
|------------------------|--------|-----------------------------|
| Removing trees | 4 | $2\frac{1}{4}$ |
| Planted trees | 8 | $5\frac{1}{2}$ |
| Planted shrubs | 10 | $\frac{1}{2}$ |
| Cultivate trees | 8 | $\frac{1}{2}$ |
| Cultivate shrubs..... | 10 | $\frac{1}{2}$ |
| Binders on trees | | |
| Total days worked..... | 14 | <u>1</u> $10\frac{1}{4}$ |

BOWLING GREEN PARK—TOTAL ACTIVITIES

| KIND OF WORK | NUMBER | DAYS |
|------------------------|--------|----------------|
| Removing trees..... | 3 | 2 |
| Spraying trees..... | 12 | $\frac{1}{4}$ |
| Spraying shrubs..... | 100 | $\frac{1}{2}$ |
| Cultivate trees..... | 57 | 3 |
| Cultivate shrubs..... | 210 | $4\frac{1}{4}$ |
| Total days worked..... | | <u>10</u> |

BATTERY PARK—TOTAL ACTIVITIES

| KIND OF WORK | NUMBER | DAYS |
|--------------------------------|--------|-----------------|
| Pruned trees..... | 22 | $2\frac{1}{2}$ |
| Pruned shrubs..... | 25 | 1 |
| Removing trees..... | 3 | $1\frac{1}{4}$ |
| Spraying trees..... | 1,072 | 14 |
| Spraying shrubs..... | 880 | $4\frac{1}{4}$ |
| Planting trees..... | 30 | 20 |
| Planting beds..... | | 21 |
| Cultivating trees..... | 806 | 49 |
| Cultivating shrubs..... | 1,080 | $31\frac{1}{2}$ |
| Cultivating beds..... | | 10 |
| Staking trees..... | 50 | $3\frac{1}{4}$ |
| Cleaning trees..... | 109 | $7\frac{1}{4}$ |
| Cleaning beds..... | | $12\frac{1}{4}$ |
| Watering trees and shrubs..... | | $3\frac{1}{4}$ |
| Removing snow..... | | 103 |
| Binders on trees..... | 60 | 3 |
| Mulching trees..... | 215 | 17 |
| Mulching shrubs..... | 255 | $9\frac{1}{2}$ |
| Mulching beds..... | | 4 |
| Erecting tree guards..... | 11 | 1 |
| Total days worked..... | | <u>318</u> |

BRYANT PARK—TOTAL ACTIVITIES

| KIND OF WORK : | NUMBER | DAYS |
|-------------------------|--------|------|
| Pruning trees..... | 70 | 13½ |
| Pruning shrubs..... | 1,025 | 50 |
| Removing trees..... | 2 | 1 |
| Spraying trees..... | 520 | 8½ |
| Spraying shrubs..... | 300 | 2½ |
| Planting shrubs..... | 22 | 3 |
| Cultivating trees..... | 283 | 20 |
| Cultivating shrubs..... | 1,220 | 35 |
| Mulching trees..... | 165 | 8 |
| Mulching shrubs..... | 365 | 8 |
| Total days worked..... | | 149½ |

CARMANSVILLE PARK PLAYGROUND—TOTAL ACTIVITIES

| KIND OF WORK | NUMBER | DAYS |
|-------------------------|--------|------|
| Removing trees..... | 1 | 2 |
| Spraying trees..... | 12 | ¼ |
| Planting trees..... | 10 | 4 |
| Cultivating trees..... | 15 | 1 |
| Cultivating shrubs..... | 15 | 1 |
| Total days worked..... | | 8¼ |

CARL SCHURZ PARK—TOTAL ACTIVITIES

| KIND OF WORK | NUMBER | DAYS |
|--------------------------|--------|------|
| Pruning trees..... | 175 | 30¼ |
| Pruning shrubs..... | 719 | 13 |
| Removing trees..... | 7 | 10 |
| Removing shrubs..... | 20 | 1 |
| Spraying trees..... | 1,115 | 10½ |
| Spraying shrubs..... | 1,475 | 6½ |
| Planting trees..... | 12 | 16 |
| Planting beds..... | | 11¼ |
| Transplanting trees..... | 2 | 9 |
| Cultivating trees..... | 309 | 20 |
| Cultivating shrubs..... | 519 | 12½ |
| Mulching trees..... | 246 | 14 |
| Cleaning beds..... | | 7½ |
| Staking trees..... | 8 | 1 |
| Repairing trees..... | 26 | 2 |
| Total days worked..... | | 169½ |

CHELSEA PARK—TOTAL ACTIVITIES

| KIND OF WORK | NUMBER | DAYS |
|---------------------------|--------|------|
| Pruning trees..... | 17 | ½ |
| Pruning shrubs..... | 262 | 2 |
| Spraying trees..... | 18 | ¼ |
| Spraying shrubs..... | 200 | ¾ |
| Planting trees..... | 17 | 6½ |
| Planting shrubs..... | 12 | ½ |
| Transplanting shrubs..... | 65 | 14½ |
| Cultivating trees..... | 22 | 3¼ |
| Cultivating shrubs..... | 17 | ¾ |
| Staking trees..... | 14 | 1 |
| Binders on trees..... | 32 | 2½ |
| Removing snow..... | | 7¼ |

| | | |
|---------------------------|----|------------|
| Watering trees, etc. | | 3¼ |
| Mulching trees | 10 | ¾ |
| Mulching shrubs | 6 | ¼ |
| Total days worked | | <u>72¾</u> |

CITY HALL PARK—TOTAL ACTIVITIES

| KIND OF WORK | NUMBER | DAYS |
|----------------------------|--------|-------------|
| Pruning trees | 38 | 15½ |
| Pruning shrubs | 555 | 25 |
| Removing trees | 4 | 2½ |
| Removing shrubs | 90 | 5 |
| Spraying trees | 762 | 8½ |
| Spraying shrubs | 1,477 | 6 |
| Planting trees | 2 | 1½ |
| Planting beds | | 10 |
| Transplanting shrubs | 40 | 6 |
| Cultivating trees | 208 | 15½ |
| Cultivating shrubs | 765 | 18¾ |
| Staking trees | 53 | 4 |
| Cleaning trees | 30 | 3 |
| Cleaning beds | | 4 |
| Removing snow | | 264 |
| Repairing trees | 1 | 2 |
| Mulching trees | 135 | 9 |
| Mulching shrubs | 120 | 3½ |
| Total days worked | | <u>403¾</u> |

COLONIAL PARK—TOTAL ACTIVITIES

| KIND OF WORK | NUMBER | DAYS |
|--------------------------|--------|------------|
| Pruning trees | 291 | 15 |
| Pruning shrubs | 1,409 | 50 |
| Removing trees | 4 | 2 |
| Spraying trees | 1,186 | 15 |
| Spraying shrubs | 400 | 2¾ |
| Cleaning trees | 110 | 6 |
| Cultivating trees | 267 | 24½ |
| Cultivating shrubs | 1,060 | 31½ |
| Cultivating beds | | 2 |
| Removing snow | | 27¼ |
| Total days worked | | <u>176</u> |

COLUMBUS PARK—TOTAL ACTIVITIES

| KIND OF WORK | NUMBER | DAYS |
|-------------------------|--------|------------|
| Pruning trees | 15 | 3 |
| Spraying trees | 331 | 6 |
| Cleaning trees | 30 | 1½ |
| Cultivating trees | 143 | 9½ |
| Removing snow | | 17½ |
| Total days worked | | <u>37½</u> |

COOPER SQUARE PARK—TOTAL ACTIVITIES

| KIND OF WORK | NUMBER | DAYS |
|--------------------------|--------|-----------|
| Pruning shrubs | 285 | 11 |
| Cultivating trees | 5 | ½ |
| Cultivating shrubs | 40 | 2½ |
| Total days worked | | <u>14</u> |

CORLEAR'S HOOK PARK—TOTAL ACTIVITIES

| KIND OF WORK | NUMBER | DAYS |
|----------------------------|--------|------|
| Pruning shrubs | 17 | 3 |
| Removing shrubs | 15 | 3 |
| Spraying trees | 196 | 3½ |
| Spraying shrubs | 715 | 3 |
| Planting trees | 10 | 4½ |
| Transplanting shrubs | 145 | 24 |
| Total days worked | | 41 |

DUANE STREET PARK—TOTAL ACTIVITIES

| KIND OF WORK | NUMBER | DAYS |
|-------------------------|--------|------|
| Planting trees | 6 | 1 |
| Cultivating trees | 25 | 1 |
| Total days worked | | 2 |

DANTE PARK—TOTAL ACTIVITIES

| KIND OF WORK | NUMBER | DAYS |
|-------------------------|--------|------|
| Spraying trees | 30 | 1 |
| Planting trees | 7 | 6 |
| Cultivating trees | 50 | 2 |
| Restoration | | 4 |
| Total days worked | | 13 |

DE WITT CLINTON PARK—TOTAL ACTIVITIES

| KIND OF WORK | NUMBER | DAYS |
|----------------------------|--------|------|
| Pruning trees | 17 | 2 |
| Pruning shrubs | 10 | 1 |
| Spraying trees | 25 | ¼ |
| Spraying shrubs | 250 | ½ |
| Transplanting trees | 2 | 6½ |
| Transplanting shrubs | 39 | 1 |
| Tree holes dug | | 1½ |
| Cultivating trees | 20 | 1½ |
| Binders on trees | 17 | 1 |
| Fertilizing trees | 19 | 2 |
| Fertilizing shrubs | 14 | 1 |
| Fertilizing lawns | | 2 |
| Total days worked | | 20¼ |

DYCKMAN HOUSE—TOTAL ACTIVITIES

| KIND OF WORK | NUMBER | DAYS |
|-------------------------|--------|------|
| Removing trees | 1 | 1½ |
| Total days worked | | ½ |

FORT WASHINGTON PARK—TOTAL ACTIVITIES

| KIND OF WORK | NUMBER | DAYS |
|-------------------------|--------|------|
| Pruning trees | 31 | 23 |
| Removing trees | 3 | 10¼ |
| Spraying trees | 2,110 | 16½ |
| Spraying shrubs | 800 | 3½ |
| Total days worked | | 53¼ |

GREELEY SQUARE PARK—TOTAL ACTIVITIES

| KIND OF WORK | NUMBER | DAYS |
|-------------------------|--------|----------|
| Pruning shrubs | 32 | 2 |
| Total days worked | | <u>2</u> |

HAMILTON PLACE PLAYGROUND—TOTAL ACTIVITIES

| KIND OF WORK | NUMBER | DAYS |
|-----------------------------|--------|----------------------------------|
| Spraying trees | 22 | $\frac{1}{2}$ |
| Cultivating trees | 14 | 1 |
| Binders on trees | 24 | 2 |
| Repairing tree guards | 6 | 2 |
| Total days worked | | <u>$5\frac{1}{2}$</u> |

HERALD SQUARE PARK—TOTAL ACTIVITIES

| KIND OF WORK | NUMBER | DAYS |
|-------------------------|--------|----------------------------------|
| Pruning trees | 15 | $\frac{1}{2}$ |
| Pruning shrubs | 28 | $1\frac{1}{2}$ |
| Removing trees | 1 | $\frac{1}{2}$ |
| Cultivating trees | 3 | $\frac{1}{2}$ |
| Planting trees | 4 | $2\frac{1}{2}$ |
| Total days worked | | <u>$5\frac{1}{2}$</u> |

HAMILTON FISH PARK—TOTAL ACTIVITIES

| KIND OF WORK | NUMBER | DAYS |
|-------------------------|--------|---------------------------------|
| Spraying trees | 11 | $\frac{1}{4}$ |
| Total days worked | | <u>$\frac{1}{4}$</u> |

HANCOCK SQUARE PARK—TOTAL ACTIVITIES

| KIND OF WORK | NUMBER | DAYS |
|-------------------------|--------|----------------------------------|
| Removing trees | 1 | 1 |
| Mulching trees | 7 | $\frac{1}{3}$ |
| Cultivating trees | 7 | $\frac{1}{3}$ |
| Total days worked | | <u>$1\frac{2}{3}$</u> |

HIGHBRIDGE PARK—TOTAL ACTIVITIES

| KIND OF WORK | NUMBER | DAYS |
|--------------------------|--------|-----------------|
| Pruning trees | 5 | $2\frac{1}{2}$ |
| Pruning shrubs | 246 | $9\frac{3}{4}$ |
| Removing trees | 24 | $39\frac{1}{2}$ |
| Removing shrubs | 52 | 3 |
| Spraying trees | 1,332 | $18\frac{3}{4}$ |
| Spraying shrubs | 525 | $3\frac{3}{4}$ |
| Cultivating trees | 5 | $\frac{1}{2}$ |
| Cultivating shrubs | 630 | $17\frac{3}{4}$ |
| Cultivating beds | | 2 |
| Cleaning beds | | 4 |
| Total days worked | | <u>101</u> |

J. HOOD WRIGHT PARK—TOTAL ACTIVITIES

| KIND OF WORK | NUMBER | DAYS |
|-------------------------|--------|------|
| Pruning trees | 51 | 48 |
| Removing trees | 29 | 53½ |
| Spraying trees | 255 | 3½ |
| Spraying shrubs | 300 | 1½ |
| Total days worked | | 106½ |

INWOOD HILL PARK—TOTAL ACTIVITIES

| KIND OF WORK | NUMBER | DAYS |
|-------------------------|--------|------|
| Pruning trees | 26 | 22½ |
| Removing trees | 5 | 8¼ |
| Spraying trees | 950 | 4 |
| Spraying shrubs | 1,000 | 2 |
| Total days worked | | 36¾ |

ISHAM GREENHOUSES—TOTAL ACTIVITIES

| KIND OF WORK | NUMBER | DAYS |
|--|--------|------|
| Removing plants to be transplanted | | 3 |

ISHAM PARK—TOTAL ACTIVITIES

| KIND OF WORK | NUMBER | DAYS |
|---------------------------|--------|------|
| Pruning trees | 125 | 17¾ |
| Pruning shrubs | 355 | 9¾ |
| Removing shrubs | 15 | 1½ |
| Spraying trees | 878 | 12 |
| Spraying shrubs | 649 | 2½ |
| Transplanting trees | 1 | 1 |
| Cultivating trees | 56 | 2½ |
| Cultivating shrubs | 275 | 6½ |
| Total days worked | | 53½ |

KUYTER PARK—TOTAL ACTIVITIES

| KIND OF WORK | NUMBER | DAYS |
|-------------------------|--------|------|
| Pruning trees | 19 | 6½ |
| Spraying trees | 32 | 1 |
| Total days worked | | 7½ |

KILPATRICK PARK—TOTAL ACTIVITIES

| KIND OF WORK | NUMBER | DAYS |
|-------------------------|--------|------|
| Pruning trees | 9 | 2 |
| Cultivating trees | 16 | 1 |
| Total days worked | | 3 |

KENMARE STREET—TOTAL ACTIVITIES

| KIND OF WORK | NUMBER | DAYS |
|-------------------------|--------|------|
| Pruning trees | 1 | ¼ |
| Removing trees | 6 | 1 |
| Total days worked | | 1¼ |

JEANNETTE PARK—TOTAL ACTIVITIES

| KIND OF WORK | NUMBER | DAYS |
|------------------------|--------|-----------------|
| Spraying trees..... | 52 | 1 $\frac{3}{4}$ |
| Spraying shrubs..... | 40 | $\frac{1}{2}$ |
| Planting trees..... | 1 | $\frac{1}{2}$ |
| Cultivating trees..... | 51 | 2 |
| Binders on trees..... | 10 | $\frac{1}{2}$ |
| Total days worked..... | | 5 $\frac{1}{4}$ |

JOHN JAY PARK—TOTAL ACTIVITIES

| KIND OF WORK | NUMBER | DAYS |
|------------------------|--------|-----------------|
| Removing trees..... | 3 | 7 |
| Spraying trees..... | 218 | 5 $\frac{1}{2}$ |
| Spraying shrubs..... | 161 | 5 $\frac{1}{2}$ |
| Cultivating trees..... | 76 | 5 |
| Total days worked..... | | 23 |

MADISON SQUARE PARK—TOTAL ACTIVITIES

| KIND OF WORK | NUMBER | DAYS |
|-------------------------|--------|------------------|
| Pruning trees..... | 42 | 4 $\frac{1}{2}$ |
| Pruning shrubs..... | 470 | 20 $\frac{3}{4}$ |
| Removing trees..... | 1 | 2 |
| Spraying trees..... | 996 | 10 $\frac{1}{4}$ |
| Spraying shrubs..... | 1,413 | 5 $\frac{1}{2}$ |
| Planting trees..... | 27 | 11 $\frac{1}{4}$ |
| Planting shrubs..... | 16 | 1 $\frac{1}{2}$ |
| Cultivating trees..... | 547 | 48 $\frac{3}{4}$ |
| Cultivating shrubs..... | 1,140 | 29 |
| Restoration..... | | 6 $\frac{1}{2}$ |
| Staking trees..... | 41 | 3 $\frac{1}{2}$ |
| Removing snow..... | | 12 |
| Cleaning trees..... | 30 | 2 |
| Binders on trees..... | 35 | 2 $\frac{1}{2}$ |
| Mulching trees..... | 115 | 5 $\frac{1}{4}$ |
| Mulching shrubs..... | 570 | 13 $\frac{1}{4}$ |
| Total days worked..... | | 178 |

MANHATTAN SQUARE PARK—TOTAL ACTIVITIES

| KIND OF WORK | NUMBER | DAYS |
|--------------------------------|--------|------------------|
| Pruning trees..... | 10 | 3 $\frac{1}{2}$ |
| Pruning shrubs..... | 165 | 7 |
| Spraying trees..... | 383 | 2 $\frac{1}{2}$ |
| Spraying shrubs..... | 351 | 5 $\frac{1}{2}$ |
| Planting trees (Memorial)..... | 4 | 3 |
| Transplanting trees..... | 5 | 3 |
| Cleaning trees..... | 50 | 2 |
| Cultivating trees..... | 168 | 11 $\frac{1}{4}$ |
| Cultivating shrubs..... | 295 | 10 $\frac{1}{2}$ |
| Staking trees..... | 61 | 5 $\frac{1}{2}$ |
| Binders on trees..... | 52 | 3 $\frac{1}{2}$ |
| Total days worked..... | | 57 $\frac{1}{4}$ |

JOHN J. MURPHY PARK—TOTAL ACTIVITIES

| KIND OF WORK | NUMBER | DAYS |
|------------------------|--------|------|
| Spraying trees..... | 72 | 2 |
| Spraying shrubs..... | 75 | 1¼ |
| Total days worked..... | | 3¼ |

MITCHELL SQUARE PARK—TOTAL ACTIVITIES

| KIND OF WORK | NUMBER | DAYS |
|------------------------|--------|------|
| Pruning trees..... | 52 | 10¼ |
| Pruning shrubs..... | 45 | 1¾ |
| Removing trees..... | 2 | 1 |
| Spraying trees..... | 72 | 3 |
| Spraying shrubs..... | 25 | ¼ |
| Planting trees..... | 1 | 1 |
| Cultivating trees..... | 154 | 9½ |
| Cultivating beds..... | | 3 |
| Cleaning beds..... | | 2 |
| Mulching trees..... | 49 | 6¼ |
| Mulching beds..... | | 2 |
| Total days worked..... | | 40 |

MONTIFIORO PARK—TOTAL ACTIVITIES

| KIND OF WORK | NUMBER | DAYS |
|---------------------------------|--------|------|
| Pruning trees..... | 48 | 8½ |
| Pruning shrubs..... | 34 | 1¼ |
| Removing trees..... | 2 | 2 |
| Spraying trees..... | 49 | ½ |
| Planting trees..... | 1 | 1 |
| Planting shrubs..... | 5 | 1 |
| Planting beds..... | | 5 |
| Cultivating trees..... | 122 | 9 |
| Cultivating shrubs..... | 13 | 1 |
| Cultivating beds..... | | 6 |
| Cleaning beds..... | | 4 |
| Removing guards..... | 5 | ½ |
| Binders on trees..... | 32 | 3 |
| Repairing guards..... | 4 | 1 |
| Watering trees, lawns, etc..... | | 1 |
| Total days worked..... | | 44¼ |

MORNINGSIDE PARK—TOTAL ACTIVITIES

| KIND OF WORK | NUMBER | DAYS |
|-------------------------|--------|-------|
| Pruning trees..... | 1,599 | 590 |
| Pruning shrubs..... | 4,590 | 150½ |
| Removing trees..... | 152 | 141¼ |
| Removing shrubs..... | 91 | 8¼ |
| Spraying trees..... | 2,232 | 33¼ |
| Spraying shrubs..... | 1,439 | 5 |
| Planting trees..... | 13 | 14 |
| Planting shrubs..... | 93 | 4 |
| Cultivating trees..... | 902 | 61¼ |
| Cultivating shrubs..... | 740 | 23 |
| Restoration..... | | 135¾ |
| Cleaning trees..... | 57 | 4½ |
| Removing snow..... | | 61 |
| Binders on trees..... | 239 | 13¾ |
| Staking trees..... | 27 | 2 |
| Mulching trees..... | 233 | 10½ |
| Total days worked..... | | 1,258 |

MOUNT MORRIS PARK—TOTAL ACTIVITIES

| KIND OF WORK | NUMBER | DAYS |
|-------------------------------|--------|--------|
| Pruning trees..... | 389 | 209½ |
| Pruning shrubs..... | 568 | 36½ |
| Removing trees..... | 29 | 64½ |
| Spraying trees..... | 1,745 | 28 |
| Spraying shrubs..... | 925 | 6½ |
| Restoration | | 684 |
| Planting shrubs..... | 218 | 8 |
| Transplanting shrubs..... | 45 | 7¼ |
| Cultivating trees..... | 1,574 | 77¾ |
| Cultivating shrubs..... | 3,095 | 99¼ |
| Cultivating beds..... | | 5½ |
| Cleaning trees..... | 25 | 1½ |
| Cleaning shrubs..... | 1,035 | 18 |
| Protecting park property..... | | 2 |
| Erecting fences..... | | 4 |
| Mowing lawns..... | | 16½ |
| Total days worked..... | | 1,268¾ |

ROGER MORRIS PARK—TOTAL ACTIVITIES

| KIND OF WORK | NUMBER | DAYS |
|------------------------|--------|------|
| Pruning shrubs..... | 210 | 6 |
| Spraying trees..... | 100 | 2 |
| Spraying shrubs..... | 150 | 1 |
| Total days worked..... | | 9 |

ST. CATHERINE'S PARK—TOTAL ACTIVITIES

| KIND OF WORK | NUMBER | DAYS |
|-------------------------|--------|------|
| Pruning trees..... | 20 | 3 |
| Pruning shrubs..... | 25 | 1 |
| Removing trees..... | 2 | 1¼ |
| Spraying trees..... | 107 | 1¼ |
| Spraying shrubs..... | 55 | ½ |
| Planting trees..... | 14 | 6½ |
| Cultivating trees..... | 93 | 4 |
| Cultivating shrubs..... | 86 | 2½ |
| Staking trees..... | 14 | 1 |
| Cleaning trees..... | 45 | ½ |
| Cleaning shrubs..... | 60 | ½ |
| Mulching trees..... | 46 | 4 |
| Mulching shrubs..... | 66 | 3 |
| Binders on trees..... | 13 | 1 |
| Total days worked..... | | 30 |

ST. GABRIEL'S PARK—TOTAL ACTIVITIES

| KIND OF WORK | NUMBER | DAYS |
|-------------------------|--------|------|
| Pruning trees..... | 34 | 12 |
| Pruning shrubs..... | 315 | 39½ |
| Removing trees..... | 5 | 4 |
| Spraying trees..... | 293 | 6 |
| Spraying shrubs..... | 50 | ¾ |
| Cultivating trees..... | 147 | 9¾ |
| Cultivating shrubs..... | 420 | 16½ |
| Cleaning beds..... | | 1 |
| Mulching trees..... | 30 | 2 |
| Mulching shrubs..... | 270 | 8¼ |

| | |
|------------------------|------|
| Removing snow..... | 10¾ |
| Total days worked..... | 110½ |

ST. NICHOLAS PARK—TOTAL ACTIVITIES

| KIND OF WORK | NUMBER | DAYS |
|---------------------------|--------|------|
| Pruning trees..... | 1,571 | 196¾ |
| Pruning shrubs..... | 5,721 | 128 |
| Removing trees..... | 11 | 13¾ |
| Spraying trees..... | 2,911 | 41¾ |
| Spraying shrubs..... | 1,112 | 8 |
| Transplanting shrubs..... | 48 | 6 |
| Cultivating trees..... | 132 | 5¾ |
| Cultivating shrubs..... | 505 | 11½ |
| Cleaning trees..... | 144 | 8 |
| Binders on trees..... | 30 | 1 |
| Restoration..... | | 2½ |
| Cavities..... | 10 | 1½ |
| Mulching trees..... | 52 | 1½ |
| Total days worked..... | | 424½ |

STUYVESANT PARK—TOTAL ACTIVITIES

| KIND OF WORK | NUMBER | DAYS |
|---------------------------|--------|------|
| Pruning trees..... | 14 | 21½ |
| Pruning shrubs..... | 1,005 | 61½ |
| Removing trees..... | 1 | 4 |
| Spraying trees..... | 486 | 3¾ |
| Spraying shrubs..... | 3,400 | 5 |
| Planting trees..... | 30 | 14½ |
| Planting shrubs..... | 106 | 16¾ |
| Transplanting shrubs..... | 194 | 28½ |
| Cultivating trees..... | 235 | 14½ |
| Cultivating shrubs..... | 358 | 8½ |
| Staking trees..... | 51 | 4½ |
| Fertilizing shrubs..... | 235 | 7¾ |
| Binders on trees..... | 10 | ½ |
| Removing snow..... | | 3 |
| Mulching trees..... | 125 | 6½ |
| Mulching shrubs..... | 95 | 2 |
| Total days worked..... | | 202¼ |

SCHIFF PARKWAY—TOTAL ACTIVITIES

| KIND OF WORK | NUMBER | DAYS |
|-------------------------|--------|------|
| Pruning trees..... | 62 | 4 |
| Spraying trees..... | 330 | 1½ |
| Planting trees..... | 50 | 6½ |
| Cultivating trees..... | 305 | 10¼ |
| Cultivating shrubs..... | 19 | ¾ |
| Staking trees..... | 24 | 1 |
| Total days worked..... | | 24 |

SEWARD PARK—TOTAL ACTIVITIES

| KIND OF WORK | NUMBER | DAYS |
|------------------------|--------|------|
| Spraying trees..... | 130 | 4 |
| Cleaning beds..... | | 2 |
| Total days worked..... | | 6 |

SMITH PARK—TOTAL ACTIVITIES

| KIND OF WORK | NUMBER | DAYS |
|--------------------------|--------|-------|
| Pruning trees | 4 | 1 |
| Removing trees | 3 | 1/2 |
| Spraying trees | 106 | 1 1/4 |
| Spraying shrubs | 61 | 1/2 |
| Planting trees | 6 | 1 3/4 |
| Cultivating trees | 116 | 8 1/2 |
| Cultivating shrubs | 76 | 3 1/4 |
| Staking trees | 10 | 3/4 |
| Binders on trees | 8 | 1/2 |
| Total days worked..... | | 18 |

THOMAS JEFFERSON PARK—TOTAL ACTIVITIES

| KIND OF WORK | NUMBER | DAYS |
|----------------------------|--------|--------|
| Pruning trees | 132 | 16 1/2 |
| Pruning shrubs | 75 | 3 |
| Removing shrubs | 742 | 37 |
| Spraying trees | 607 | 4 1/2 |
| Spraying shrubs | 476 | 2 |
| Planting trees | 96 | 26 |
| Planting shrubs | 53 | 3 |
| Transplanting shrubs | 109 | 7 1/4 |
| Restoration | | 10 1/2 |
| Cultivating trees | 659 | 28 |
| Cultivating shrubs | 501 | 13 1/2 |
| Staking trees | 39 | 4 |
| Binders on trees | 140 | 5 |
| Removing snow | | 3 1/2 |
| Cleaning trees | 139 | 9 1/4 |
| Cavities | 10 | 1 |
| Mulching trees | 240 | 10 |
| Mulching shrubs | 155 | 6 |
| Total days worked..... | | 190 |

TOMPKINS SQUARE PARK—TOTAL ACTIVITIES

| KIND OF WORK | NUMBER | DAYS |
|---------------------------|--------|--------|
| Pruning trees | 12 | 4 |
| Removing trees | 2 | 2 1/2 |
| Spraying trees | 998 | 16 3/4 |
| Spraying shrubs | 46 | 1/2 |
| Planting trees | 59 | 18 1/4 |
| Planting beds | | 9 |
| Transplanting trees | 2 | 3 |
| Restoration | | 2 3/4 |
| Cultivating trees | 581 | 44 |
| Cultivating shrubs | 11 | 1/2 |
| Cultivating beds | | 9 1/2 |
| Staking trees | 111 | 7 1/4 |
| Binders on trees | 178 | 8 1/2 |
| Removing snow | | 30 |
| Cleaning trees | 25 | 1 |
| Cleaning beds | | 1 1/2 |
| Mulching trees | 256 | 14 |
| Mulching beds | | 4 |
| Total days worked..... | | 177 |

UNION SQUARE PARK—TOTAL ACTIVITIES

| KIND OF WORK | NUMBER | DAYS |
|-------------------------|--------|------|
| Spraying trees | 146 | 2½ |
| Spraying shrubs | 100 | ½ |
| Digging holes | | 2½ |
| Cleaning trees | 40 | 3¼ |
| Mulching trees | 35 | 2 |
| Total days worked | | 10¾ |

WASHINGTON SQUARE PARK—TOTAL ACTIVITIES

| KIND OF WORK | NUMBER | DAYS |
|----------------------------|--------|------|
| Pruning trees | 86 | 37 |
| Pruning shrubs | 126 | 11¼ |
| Removing trees | 4 | 7½ |
| Spraying trees | 1,271 | 18¾ |
| Spraying shrubs | 1,250 | 6¾ |
| Planting trees | 46 | 65¼ |
| Planting shrubs | 49 | 10¼ |
| Planting Xmas trees | 1 | 6 |
| Transplanting shrubs | 48 | 7¾ |
| Digging holes | | 5½ |
| Restoration of lawns | | 119½ |
| Binders on trees | 44 | 2½ |
| Fertilizing lawns | | 41¼ |
| Staking trees | 35 | 1¾ |
| Removing snow | | 7 |
| Cleaning trees | 65 | 2 |
| Cultivating trees | 758 | 47 |
| Cultivating shrubs | 520 | 15¾ |
| Painted wounds | 10 | ½ |
| Mulching trees | 250 | 16 |
| Mulching shrubs | 70 | 3 |
| Total days worked | | 431¼ |

MEMORIAL TREES PLANTED

| | FLOWERING | PLANE |
|--|---------------------|------------|
| Manhattan Square Park | 1 Cherry | 1 Oriental |
| Manhattan Square Park | 2 Ginkgos | |
| Lawn No. 81 A—C. P. | 2 Norway Maples | |
| Lawn 136 C. P. | 1 tree | |
| Jumel Mansion | 1 tree | |
| Lawn No. 81 A. C. P. | 1 Norway Maple | |
| Grant's Tomb | 1 tree | |
| 181st St., Amsterdam Ave. | 1 Norway Maple | |
| 84th Street entrance to Riverside Park | 2 Austrian Pines | |
| 84th Street entrance to Riverside Park | 3 Locusts | |
| 116th Street, Riverside Park | 1 Schwedlerii Maple | |
| Lawn No. 136 C. P. | 1 Maple | |
| Lawn No. 136 | 1 tree | |
| Number of Memorial trees planted | | 19 |

TREES DAMAGED BY VANDALS

| | |
|------------------------------------|--------------------------------|
| Stuyvesant Park | 1 Carolina Poplar 4" destroyed |
| West Drive, opp. 72nd Street | 1 tree damaged |
| 72nd Street—Boathouse | 3 trees uprooted—transplanted |
| | 1 tree destroyed |
| | 4 trees damaged |
| Total | 5 trees |

TREES DAMAGED BY AUTOS

| | |
|--|--|
| 155th St., Edgecombe Ave. | 1 P. Oak, 5½", cal., destroyed, suing |
| 82nd St., West Drive, C. P. | 1 Mulberry, 30", cal., damaged, suing |
| 255 West End Ave. | 1 Gingko, 4", damaged, unknown |
| 168 East 74th St. | 1 Norway Maple, 3", destroyed, suing |
| 73rd St., East Drive, C. P. | 1 Or. Plane, 14", damaged, suing |
| 81st St., West Drive, C. P. | 1 Austrian Pine, 24", damaged, suing |
| Centre Drive opp. 71st St., C. P. | 1 Norway Maple, 4½", damaged, suing |
| 111th St., Riverside Drive | 1 Am. Elm, 20", dam., unknown auto |
| 466 West 150th St. | 1 Nor. Maple, 15", dest., unknown auto |
| 193rd St., Riverside Drive | 1 Norway Maple, 4", dam., suing |
| 148th St., Riverside Drive | 1 Or. Plane, 4½", dest., unknown auto |
| 70th St., West Drive, C. P. | 1 Am. Elm, 4½", dest., unknown auto |
| 94th St., Riverside Drive | 1 European Linden, 6", dest., suing |
| Riverside Drive and Henshaw St. | 1 Norway Maple, 3", dest., unknown |
| Riverside Drive and 173rd St. | 1 Eur. Linden, 4", destroyed, unknown |
| 807 Riverside Drive | 1 Norway Maple, 4½", destroyed, suing |
| Riverside Drive and 143rd St. | 1 Norway Maple, 4", destroyed, unknown |
| 2 Seaman Ave. | 1 Norway Maple, 4", destroyed, unknown |
| Riverside Drive and 145th St. | 1 Eur. Linden, 5", damaged, unknown |
| Riverside Drive and 166th St., | 1 Nor. Maple, 3½", destroyed, unknown |
| 831-851 West 176th St. | 3 Nor. Maples, 3", destroyed, unknown |
| 441 East 57th St. | 1 Iron guard, damaged, unknown |
| 194 Riverside Drive | 1 Eur. Linden, 6", dam., no police report |
| 184th St., Harlem River Drive | 1 Nor. Maple, 4", destroyed, unknown |
| 188th St., Harlem River Drive | 1 Nor. Maple, 4", destroyed, unknown |
| 147th St., Riverside Drive | 1 Eur. Linden, 5", damaged, unknown |
| 142nd St., Riverside Drive | 1 Nor. Maple, 6", destroyed, unknown |
| 119th St., Riverside Drive | 1 Am. Elm, 18", damaged, unknown |
| Riverside Drive and Henshaw St. | 1 Nor. Maple, 3½", destroyed, unknown |
| 19 Cummings St. | 1 Nor. Maple, 3", dest., no police report |
| 150th St., Edgecombe Ave. | 1 Am. Elm, 16", dam., unknown auto |
| 68th St. and Fifth Ave. | 1 Am. Elm, 10", dam, unknown auto |
| 689 Riverside Drive | 1 Am. Linden, 4½", dam., unknown auto |
| 197th St., Harlem River Drive | 1 Nor. Maple, 4", destroyed, suing |
| 89th St., Riverside Drive | 1 Am. Elm, 18", damaged, suing |
| 81st St., Park Avenue | 1 Gingko, 4½", dam., unknown auto |
| 190th St., Harlem River Drive | 1 Nor. Maple, 4", destroyed, suing |
| 75th St., East Drive | 1 Or. Plane, 5", dam., transplanted, suing |
| 97th St., Riverside Drive | 1 Am. Elm, 8", dam., no police report |
| 143rd St., Riverside Drive | 1 Nor. Maple, 5", dam., no police report |
| 109th St., Riverside Drive | 1 Am. Elm, 16", dam., unknown auto |
| 149th St., Bradhurst Ave. | 1 Oak, 6", destroyed, unknown auto |
| 193rd St., Harlem River Drive | 1 Nor. Maple, 4", dest., unknown auto |
| 101st-102nd Sts., Riverside Drive | 1 Am. Linden, 6", no police report |
| 47-51 East 64th St. | 1 Car. Poplar, damaged slight |
| 82nd St., East Drive | 1 Red Maple, 22", damaged, suing |
| Opp. 71 Jackson St. | 1 Gingko, 2½", destroyed, suing |
| 96th St., East Drive | 1 Am. Elm, 18", damaged, suing |
| 101st-102nd St., Riverside Drive | 1 Or. Plane, 5", destroyed, suing |
| 173rd St., Riverside Drive | 1 Nor. Maple, 4", damaged, suing |
| East Drive opp. 93rd St. | 1 Sycamore Maple, 24", damaged, suing |
| 66th St., Cross Drive, C. P. | 1 Sycamore Maple, 12", destroyed, suing |
| 155th St. and Broadway | 1 Oak, 6", destroyed, unknown auto |
| Trees destroyed by vehicles | 28 |
| Trees damaged by vehicles | 27 |

TREES BLOWN DOWN BY STORM

| | | | |
|--|------------------|-----|-----------|
| 3089 Broadway | 1 Oriental Plane | 7" | destroyed |
| 124th Street, Riverside Drive | 1 large limb | | damaged |
| 62nd Street, Madison Avenue | 1 Car. Poplar | 8" | " |
| 77 East 91st Street | 1 Oriental Plane | 6" | " |
| 175th Street, Fort Washington Avenue ... | 1 Car. Poplar | 12" | " |
| 153rd Street, McComb's Dam Road | 1 " " | 35" | " |
| 91st Street, Riverside Drive | 1 American Elm | 12" | " |
| Corlear's Hook South | 1 " " | 10" | " |

| | | | |
|--|-------------------|-----|-----------|
| Dyckman Street and Bolton Road | 1 Car. Poplar | 12" | destroyed |
| Inwood Hill Park | 1 " " | 12" | " |
| 106th Street, Riverside Drive | 1 tree | | " |
| 98th Street, Riverside Drive | 1 " " | | " |
| 106th Street, Riverside Drive | 1 " " | | " |
| 67th-69th Streets, East Drive | 2 " " | | " |
| 137th Street, Edgecombe Avenue | 1 " " | | " |
| John Jay Park | 1 Oriental Plane | 6" | " |
| 192nd Street, Edgecombe Avenue | 1 Silver Maple | 12" | " |
| 62nd Street, East Drive | 1 tree | | " |
| Morningside Park | 2 Ailanthus | 24" | " |
| 91st Street, Riverside Drive | 1 American Elm | 14" | " |
| Lawn No. 55 | 1 Pin Oak | 6" | " |
| 145th Street and Broadway | 1 tree | | " |
| 87th Street, Riverside Drive | 1 Ailanthus | 22" | " |
| Thomas Smith Park | 1 Locust | 6" | " |
| Madison Square Park | 1 American Elm | 12" | " |
| Fairview Avenue, Broadway and 191st St. | 1 Norway Maple | 4" | " |
| 36th Street and Park Avenue | 1 tree | | damaged |
| Carl Schurz Park | 4 Ailanthus | | destroyed |
| 158th to 165th Street, Harlem River Drive. | 6 trees | | damaged |
| 130th Street and 5th Avenue | 2 Norway Maples | 14" | destroyed |
| 155th Street and Broadway | 1 Pin Oak | 4" | " |
| 99th Street, Riverside Drive | 1 European Linden | 12" | " |

TREES DAMAGED BY BUILDERS

| | |
|--|-------------------------|
| 82nd-83rd Street, West End Avenue..... | trees repaired |
| 93rd-94th Street, West End Avenue..... | 4 Poplars, not repaired |
| 182nd-184th Street, Laurel Hill Terrace..... | trees repaired |
| 153rd Street, Riverside Drive..... | 5 Oriental Planes |
| | (case not settled) |

BUREAU OF MAINTENANCE

During the year 1928 Washington Square Park comfort station for men and women, which was under construction, was completed and opened to the public.

The Department maintained within the parks forty-nine comfort stations, for men; 37 single tour and 12 double tour, forty-five comfort stations for women, 30 single tour and 15 double tour.

Single tour comfort stations operate from 9 a. m. to 5 p. m. or 10 a. m. to 6 p. m.

Double tour comfort stations operate from 7 a. m. to 2 p. m. and from 2 p. m. to 10 p. m.

There are also four bath houses for the use of men and women in the following parks:

Seward Park,
DeWitt Clinton Park,
Thomas Jefferson Park,
Hamilton Fish Park.

The working force under the Bureau of Maintenance for the year 1928 consisted of the following:

- 1 General Foreman
- 3 District Foremen
- 21 Park Foremen
- 343 Laborers all year round (500 summer months)
- 4 Stablemen
- 1 Supervisor of Attendants (Female)
- 71 Attendants (Female)
- 1 Caretaker (Female)
- 1 Caretaker (Male)
- 8 Watchmen
- 20 Drivers
- 23 Auto Enginemen
- 1 Foreman of Greenhouse
- 19 Gardeners assigned to Greenhouse
- 54 Gardeners assigned to Forestry Bureau
- 74 Climbers and Pruners
- 1 Foreman of Mechanics
- 10 Keepers
- 69 Mechanics
- 1 Supervisor of Attendants (Male)
- 21 Attendants (Male)

CARE OF LAWNS

The proper maintenance of lawns, in view of the poor soil generally existing in Manhattan park areas and the continuous crowded use of park territory, is one of the most difficult problems of the administration. Carelessness and lack of respect for public property on the part of those using the parks as well as insufficient policemen have caused our lawns to deteriorate to such an extent that a thorough reseeding has become necessary throughout the parks in the Borough of Manhattan.

The areas were spread with stable manure which was ploughed in the autumn and seeded with corn, peas and rye, which in turn were ploughed in the spring. The ground was then harrowed and raked; lime used where required and seed sown.

To allow the newly seeded areas an opportunity to become thoroughly established, temporary six foot wire mesh fences were erected.

All small lawn areas where the grass was weak and had deteriorated, were spaded and seeded during the spring. Lawns in comparatively good condition were maintained and improved by putting on top dressing and well rotted stable manure in the early winter, or were treated with commercial fertilizer in the spring.

2707 tons of rotted stable manure were distributed on the lawns and plantations throughout the parks in the Borough of Manhattan.

The stable manure from the department stables at 97th Street Yard, Central Park, and from a large riding academy and the armories in the vicinity of Central Park, was used as a fertilizer.

The manure is stored in two concrete manure pits each of 4250 and 4400 cubic yards capacity.

During the dry weather in July, August and September it was necessary to water the lawns in numerous parks.

SOD

55,000 square feet of sod was purchased and laid along the border, drives and lawns throughout Central Park, Riverside Park, Bryant Park, City Hall Park, Bowling Green Park, Washington Square Park and any others requiring it.

DRIVES AND BRIDLE PATHS

The bridle paths and drives in Central Park and Riverside Drive were spiked up with the road roller and re-surfaced with fresh gravel. At many points where the constant addition of new gravel from year to year had raised the grade of the path too high, the surplus gravel was removed and the surface brought to the proper grade. During the summer the bridle path has been sprinkled daily and a layer of calcium chloride was used in order to keep the dust down. These drives have been kept in as good condition as possible with the small amount of money available for laborers and repairs.

FLOWER SHOW

There was the usual floral exhibition at the Central Park Greenhouses during the winter season, which was open to the public daily from 10 a. m. to 4 p. m. At Easter-time the annual show of azalias, tulips, hyacinths, lilies and other seasonable flowers was given. The annual chrysanthemum show was held in November.

Flower beds were maintained during the season in City Hall Park, Madison Square Park, Stuyvesant Park, Riverside Park and Mt. Morris Park and Park Avenue plots. The largest of these displays were in City Hall Park and at the plaza, 59th Street and Fifth Avenue.

SKATING AND BAND CONCERTS

The skating houses erected at the large lake at 72nd Street, and the Harlem Mere, 110th Street, Central Park, for use during the season of 1928, will be removed in the spring, stored for the summer and re-erected at the beginning of the winter.

On January 15, 1928, a Skating Carnival took place at the Conservatory Lake. Double band stands were erected and benches and chairs furnished for the occasion. Platforms, stands and poles were erected for the championship.

Canoe races were held July 4, 1928 at the Large Lake, 72nd Street, Central Park.

Platforms and diving platforms were erected and compartments built for dressing purposes for use at the Water Carnival held August 12, 1928, and removed after the celebration.

CONCERT SEASON

During the concert season, temporary band stands and seats and the necessary electric lighting were installed in those parks which are not provided with permanent stands. A large number of festivals and celebrations were held in the parks during the year which necessitated extra work for the labor and Mechanical forces.

GARAGE

The equipment for maintaining the work throughout the Department of Parks in the Borough of Manhattan, consists of:

1— $\frac{3}{4}$ ton truck
1—1 " "
3— $1\frac{1}{2}$ ton trucks
2—2 " "
4—3 " "
3—Ford business bodies.

MECHANICAL FORCE

The mechanical force of the Department was employed largely in small jobbing repairs necessary to keep the buildings, structures and equipment of the department in good condition. Work orders were issued covering the work to be done by the mechanical force.

Playground structures and apparatus were kept in condition for use throughout the season and new supplies, jumping ropes, swings, etc., were made at the department work shop for use in the playgrounds.

BUILDING REPAIRS

Overhauling and repairing the interior and exterior of the Menagerie buildings as required. A swimming hole was built in the deer paddock.

Runway built and duck pond at 59th St. cleaned out.

Concrete floor was laid in the basement of the Arsenal building and used as a garage.

Elevator and shaft of elevator in Arsenal building painted.

A new nursery was opened in April, 1928, at 64th Street and Central Park West.

In order to facilitate the routine work a tool house was built and water lines put in.

Marble Arch, men's comfort station, interior and exterior repaired and painted.

Sheep Meadow, men's comfort station, interior and exterior repaired and painted.

Summer House, Section 3, Central Park, repaired and painted.

Speed limit signs "20 Miles Per Hour" were placed at every entrance in Central Park.

Ramble, women's comfort station, interior repaired and painted.

Ramble, men's comfort station, necessary repairs made and interior painted.

Belvedere, men's comfort station, repairs made to side walls and ceiling and interior and exterior painted.

Belvedere, women's comfort station, interior and exterior painted.

106th St. and 5th Ave. men's comfort station, interior repaired and painted.

96th St., Riverside Drive, Men's Comfort Station, interior and exterior repaired and painted.

96th St., Riverside Drive, Women's Comfort Station, interior and exterior repaired and painted.

108th St., Riverside Drive, Men's Comfort Station, interior and exterior repaired and painted.

108th St., Riverside Drive, Women's Comfort Station, interior and exterior repaired and painted.

123rd St., Riverside Drive, Women's Comfort Station, interior and exterior repaired and painted.

175th Street, Speedway Comfort Station, interior and exterior repaired and painted.

Speedway Office, exterior of building repaired and painted.

Isham Mansion, Women's Comfort Station, interior painted; also interior of Isham Mansion painted.

Isham Greenhouse, exterior repaired and painted.

Inwood Hill Park, Little Cottage, interior and exterior painted.

Thomas Jefferson Playground, interior and Field House painted.

West 59th Street Gymnasium, interior and exterior repaired and painted.

Bryant Park, men's comfort station, side walls and ceiling repaired and interior and exterior painted.

St. Gabriel's Park, tool house, interior painted.

Stuyvesant Park, Women's Comfort Station, interior and exterior of building repaired and painted.

Hudson Park, Men's Comfort Station, interior and exterior repaired and painted.

Hamilton Fish Field House, interior repaired and painted.

Tompkins Square, Women's Comfort Station, interior repaired and painted.

Tompkins Square, tool house, interior repaired and painted.

Tompkins Square, field house, interior repaired and painted.

Seward Park, Men's Comfort Station, interior and exterior of corridor repaired and painted.

Seward Park, Women's Comfort Station, interior repaired and painted.

Seward Playground, Field House, exterior repaired and painted.

City Hall Park fountain, coping of wall painted green and turned into a flower bed.

City Hall Park, a bird bath was installed.

Greenhouse, show house, repaired and painted, also Cactus house painted.

PLUMBING

Necessary plumbing repairs were made to all Men's and Women's Comfort Stations, baths and field houses, etc., throughout the parks in the Borough of Manhattan.

STOVES

Repairs were made to all stoves, stove pipes, boilers, and heating apparatus throughout the parks.

DRINKING FOUNTAINS and DISPLAY FOUNTAINS

Repairs were made to all drinking fountains and display fountains as required throughout the various parks.

RUSTIC BENCHES AND ARBORS

Repairs were made to rustic benches and rustic arbors where required throughout the various parks.

BENCHES

New benches were re-assembled and old benches were repaired and painted as required throughout the various parks.

FENCES

The iron fences along the Broadway plots from 60th to 122nd Streets were repaired as required; also along the Park Avenue plots, 34th to 40th

streets and from 59th to 96th Streets; also along the Seventh Avenue plots, 110th to 153rd Streets, which required daily attention from the department iron workers as these fences are constantly being damaged by automobiles and horse-drawn vehicles. Repairs were made from time to time to the pipe rail fences, chain link fences and iron picket fences as required in the various parks.

BRIDGES

Repairs were made to all the bridges in Central Park, which are being constantly broken by automobiles.

WATER LINES

Repairs were made to the old water supply lines and new lines were laid where required.

HALYARDS

Halyards were replaced on flag poles where required throughout the parks.

SIGNS

Signs were re-lettered and painted and new signs made standard color as required throughout the parks.

PLAYGROUND APPARATUS

Repairs were made to all playground apparatus and equipment throughout the various playgrounds in the parks.

WALKS

Walks throughout the parks were repaired and re-laid.

POLICE BOOTHS

Repairs were made to police booths as required.

LEADERS AND GUTTERS

Repairs were made to leaders and gutters where required throughout the parks.

ELECTRIC SUPPLY

Lighting fixtures were repaired and new ones installed where required throughout the buildings in the parks. All band stands where concerts were given were wired and light furnished.

RADIATORS

All radiators were repaired and overhauled as required throughout the buildings in the parks.

OFFICE EQUIPMENT

Repairs were made to all office equipment as required.

ROLLING STOCK

Repairs were made to all rolling stock as required.

HARNESS

Repairs were made to all the harness as required.

STATUES AND MONUMENTS

All statues were repaired and cleaned where necessary.

MARBLE PARTITIONS AND TILE

Repairs were made to all marble partitions and tile as required.

RE-GLAZING

Repairs were made to windows, catches, etc., and sash cords replaced where necessary, also re-glazing done where required.

BOILERS OR HEATING PLANTS

All boilers and heating plants were overhauled and repaired as required throughout the year.

BASINS AND MANHOLES

Drain basins and manholes were cleaned out and repaired as required.

RECREATION PIERS

The Department maintains the following Recreation Piers during the summer time for a period of seventy days, which require the following force to operate them:

| <i>Piers</i> | <i>Employees</i> |
|-------------------------|---|
| Barrow Street Pier, | } 12 Male Attendants 6 Female " 1 Foreman |
| East 3rd Street Pier, | |
| Market Street Pier, and | |
| West 129th Street Pier. | |

With the small labor force employed we maintain 98,031 acres of lawns, clean and cut grass, also clean the comfort stations, tool houses, shelter houses,

and gymnasium buildings, and put the bridle paths in shape, also put up and take down the swings in the playgrounds each day.

During the year 1928 money was appropriated for the purpose of appointing 200 additional laborers.

During the summer months a considerable amount of calcium chloride was purchased and spread over the bridle paths and all the playgrounds which disinfected the ground and kept the dust down.

Besides the regular routine work, the following SPECIAL WORK was accomplished during the year:

Cooper Square—New ejector was installed.

Ball Field, Section 1—Graded.

Soldiers and Sailors Monument—Excavated and laid 150 feet of drain pipe.

Fort Washington Ave. and 183rd St.—An old well which served no purpose was filled in with rock and dirt, which took 19 loads.

72nd St. Circle, Central Park—Excavated and installed 175 feet of water pipe for spray fountain.

86th St. Transverse Road, C. P.—A retaining wall was built.

Lincoln Square, 66th St. and Broadway—Old fence removed, ground graded, curb re-set and walk repaired.

190th to 191st Sts., Amsterdam Ave.—170 feet of bluestone flagging relaid.

Speedway, 163d, 168th, 184th and 197th Sts.—Four water gates were repaired at the above locations.

Inwood Hill Park, No. 287 Dyckman St.—Old barn was removed.

Colonial Park, 150th Street, top walk—New drain basins were installed.

138th Street, Riverside Extension—New water line was installed.

Men's and Women's comfort stations.

Watergate Playground—Filling and grading ruts.

Battery Park—Two stands erected by concessionaire were removed also the concrete flooring.

Dyckman House, 204th Street—New water line was installed.

MENAGERIE

The following presentations were made during the year:

- 1 Spider Monkey
- 1 Roseate Cockatoo
- 1 Silver Fox
- 1 Toncan
- 1 Sandpiper
- 4 Ring Tail Monkeys
- 2 Green Parrots
- 1 Bull Snake
- 2 Ringneck Pheasants
- 2 Swan
- 1 Porcupine
- 2 Black Bears

A camel was loaned to a motion picture company for the Charity Ball, May 2nd, at the Madison Square Garden.

The following is a list of sales during the year:

- 1 Sow
- 3 Pigs

The following is a list of births during 1928:

- 8 Lion Cubs
- 1 Camel
- 1 American Bison
- 1 Elk Calf
- 1 Jak
- 1 Red Deer

The following exchange was made during the year:

1 pair Turkins for 1 pair silver pheasants from Mr. E. K. Ould, Hollins, Va.

BUREAU OF ENGINEERING

The following is a report on the work done by the Bureau of Engineering during the year 1928:

CONTRACTS

CENTRAL PARK

Tennis Courts

A topographical survey, estimate, plans and specifications for the improvement of the Tennis Courts in Central Park were made and a contract for the work was signed. Work on same was begun and up to the end of the year, the work completed was as follows:

- 500 Cubic Yards of Excavation.
- 6 Drain Basins were Built.
- 550 Linear Feet of 6" Drain Pipe Laid.
- 1100 Linear Feet of Wire Mesh Fence was taken down and water supply installed.

Sprinkler System

A survey to determine the plots to be irrigated by an underground Sprinkler System was made. Calculations were made of the areas of lawns in need of irrigation. Plans and specifications were drawn up.

A Contract for the Sprinkler System was awarded and approximately 153,000 linear feet of pipe were laid and 5,109 sprinkler heads installed.

"The Pond"

To hold the shore line of "The Pond" and to give it a more rustic effect, a survey, plans and specifications were prepared and the contract awarded for the placing of 2,972 linear feet of rock-facing of which 1,140 feet was obtained in the Park and 1,832 feet of rock was furnished by the Contractor. This contract was supplemented by an Open Market Order for 250 linear feet of facing. This work was done by the same Contractor.

65th Street Transverse Road

The rock cuts in 65th Street Transverse Road were faced with reinforced concrete after removal of loose masses to afford a safe anchorage for the concrete. The loose rock has been a menace to pedestrians and vehicular traffic.

The quantities of the work performed were as follows:

- 88.30 Cubic Yards of Rock Excavation
- 244.11 Cubic Yards of Concrete

Walks

Many of the walks of Central Park have been in very poor condition for a number of years, which materially impaired the beauty of the Park. Much work was done toward remedying this, consisting of the laying of:

- 383000 Square Feet of Asphalt Wearing Surface
- 3130.35 Cubic Yards of Concrete



IRRIGATION SYSTEM
CENTRAL PARK

Officially turned on by Commissioner Walter R. Herrick

West Drive

Various portions of the West Drive are seriously in need of repairs. It is intended that more work will be done this year. With the funds available only those portions of the Drive between 69th and 79th Streets were repaired. This work constituted the laying of:

11136 Square Yards of Asphalt Concrete Wearing Surface
41.38 Cubic Yards of Cement Concrete

The Arsenal

In order to utilize all of the space on the second floor of the Arsenal Building, plans and specifications were drawn up and the contract awarded for the interior finish, and at the end of 1928 work was begun to finish the rooms that were left unfinished when the Arsenal was rebuilt.

Greenhouses

Parts of the superstructure in the Central Park Greenhouse were badly corroded and specifications for these repairs were drawn up and the contract awarded.

"Bow Bridge"

"Bow Bridge," the most beautiful and graceful in Central Park, is a foot bridge approximately 140 feet in length. It is constructed of a wrought iron girder framework covered with an ornamental plating of cast iron. The plating is badly rusted and broken, and plans and specifications were drawn up to replace the plating, where necessary, and strengthen the girders of the bridge. The contract, however, was not awarded when the low bidder defaulted.

Bridle Path

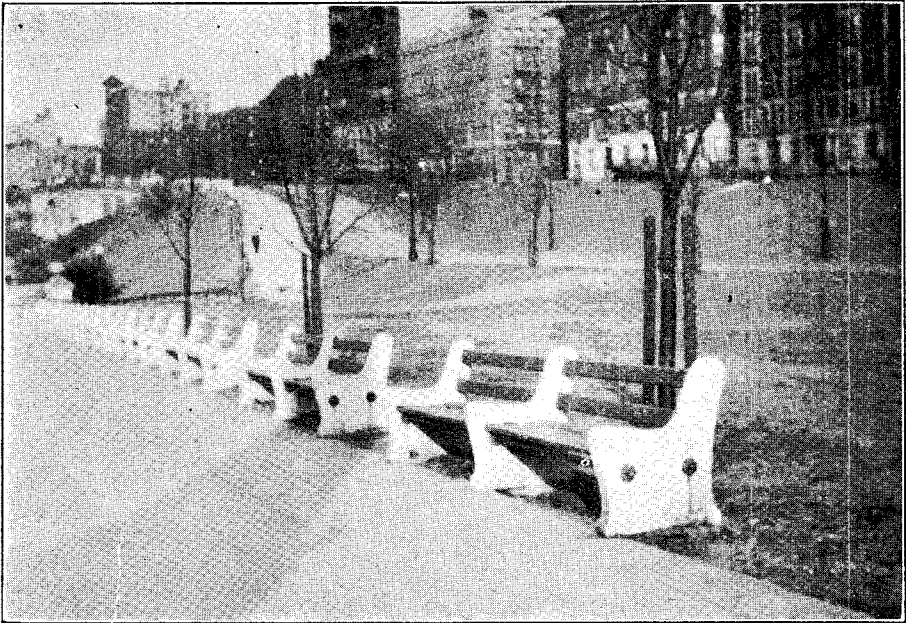
The Bridle Path in Central Park requires resurfacing from time to time. Plans and specifications were drawn up and the contract awarded for the spreading of sand to a depth of three (3) inches over $5\frac{1}{2}$ miles of path.

Park Benches

Existing movable park benches are often found a distance from the desired location. In recent years these benches have slowly been replaced by concrete permanent park benches. Plans and specifications were drawn up and the contract awarded for the setting of two hundred (200) permanent park benches in Central Park.

Curbing

Plans and specifications have been drawn up and the contract awarded for setting about 2500 linear feet of concrete curbing starting from the southeasterly corner of the Park at Columbus Circle.



PERMANENT CONCRETE BENCHES
IN CENTRAL PARK

MUSEUM OF NATURAL HISTORY

The following work was done in the Museum of Natural History:

2 Copper finials and lightning conductors were erected on the Southeast and Southwest Towers.

Metal book-stack extension to Library was installed.

190 Storage Cases were installed on the 5th and 6th floors.

Steel Shelving was erected.

Sheet Metal Work and painting in Towers and Tower Room done.

MUSEUM OF ART

Marble work, tile work, plumbing and structural steel work in the Public Toilets and West Court of "B" and extension for offices and shops in the Courtyard of Boiler Room were all done in 1928.

RIVERSIDE DRIVE

Walks

Surveys were made, plans and specifications were drawn up to improve the walks of Riverside Drive and the contract was awarded. From funds charged to "Rehabilitation and General Improvement of Riverside Park," the walks between 72nd and 129th Streets were repaired. Under this contract the amounts of materials used were as follows:

1363 Cubic Yards of Concrete
173040 Square Feet of Asphalt Walk Pavement
2800 Linear Feet of Concrete Edging

Plans and specifications were made, to make use of budget funds, for further improvement of Riverside Drive walks from 97th to 102nd Streets. Under this contract the materials used were as follows:

48.25 Cubic Yards of Concrete
9915.50 Square Feet of Asphalt Wearing Surface

Surveys were made, plans and specifications were drawn up for the repair of Riverside Drive between 72nd and 128th Streets and the amounts of materials necessary for this improvement were as follows:

155 Cubic Yards of Cement Concrete
3064 Sq. Yds. of Asphaltic Concrete Wearing Surface

"Soldiers' and Sailors' Monument"

On August 1, 1927, lightning struck the roof of the Soldiers' and Sailors' Monument and damaged it to such an extent that practically the entire roof had to be removed and reset by stone and those stones that were ruined had to be cast and set in place. Plans and specifications were drawn up, the contract awarded and the work completed satisfactorily.

While examining the above damage, it was found that rain and frost had badly impaired some of the carved members, particularly the Acanthus

leaves of the Corinthian Capitals. Estimates were forthwith obtained for repointing and waterproofing the Monument, specifications prepared and the contract awarded.

Plans and specifications were drawn up for the repair of the walk around the Soldiers' and Sailors' Monument. This contract was awarded and will consist of about 12,000 square feet of ornamental tile pavement.

Benches

Along Riverside Drive between 161st and 165th Streets, thirty-six (36) permanent park benches were furnished and erected according to plans and specifications prepared by this Department. This contract was supplemented by an Open Market Order for five (5) more benches which were duly erected.

Fence and Wall

Plans and specifications were drawn up and the contract awarded for the erection of a four foot wrought iron picket fence with a four foot gate and a concrete curb wall around the center plot in Riverside Drive and 156th Street. Under this contract a surface basin is also proposed at the South end of this plot.

BRYANT PARK

The sidewalk was narrowed on the north side of West 40th Street from Fifth Avenue to the southeast corner of Bryant Park about 506 feet West of Fifth Avenue.

COLONIAL PARK

Plans and specifications were drawn up for a new comfort station, but the bids received were beyond the amount appropriated.

BOWLING GREEN, BATTERY AND COLUMBUS PARKS

Plans and specifications were drawn up and the contract awarded to repair, where necessary, the cement walk pavements of Bowling Green, Battery and Columbus Parks. This work will consist of laying approximately 12,000 square feet of pavement.

DEWEY SQUARE, DEWITT CLINTON AND BATTERY PARKS

In order to protect the lawns of Dewey Square and DeWitt Clinton Parks and to enclose the playground in Battery Park, plans and specifications were drawn up and the contract awarded to erect these fences and gates. Approximately 3200 linear feet of a four foot chain-link fence is to be erected, three (3) four foot gates in Dewey Square, one (1) four foot gate in Battery Park and seven (7) ten foot gates in DeWitt Clinton Park.

BROADWAY PARK PLOTS

The park plots in the center of Broadway between 135th and 168th Streets, which were constructed over the top of the subway when the subway was built, have been in very poor condition due to the settlement of the filling and other causes. In the last few years several of these plots were vastly improved by substituting for the dilapidated curbstone a concrete curb wall surmounted by an iron picket fence, laying new walk pavements and providing permanent park benches. A number of benches at the ends of these plots have been badly smashed by reckless automobilists. Plans and specifications were drawn up and the contract awarded for reconstructing four (4) more plots with the added improvement of a 12" curb wall in front of the end benches to protect people sitting on these benches and the benches themselves. In order also to protect the picket fences which have been damaged by automobiles, reinforced concrete posts are to be constructed at the ends of the fences.

The estimated amounts of materials for the improvement of these four (4) plots are as follows:

- 600 Cubic Yards of Excavation
- 1710 Linear Feet of Concrete Curb Wall
- 16 Concrete Corner Post
- 7000 Square Feet of Asphalt Mastic Walk
- 1600 Linear Feet of Wrought Iron Picket Fence, three (3) feet high.
- 64 Concrete Benches.

CHELSEA AND CARL SCHURZ PARKS

Plans and specifications were drawn up and the contract awarded for the improving of the walks in Chelsea Park and Carl Schurz Park. Under this contract the work and materials will be approximately as follows:

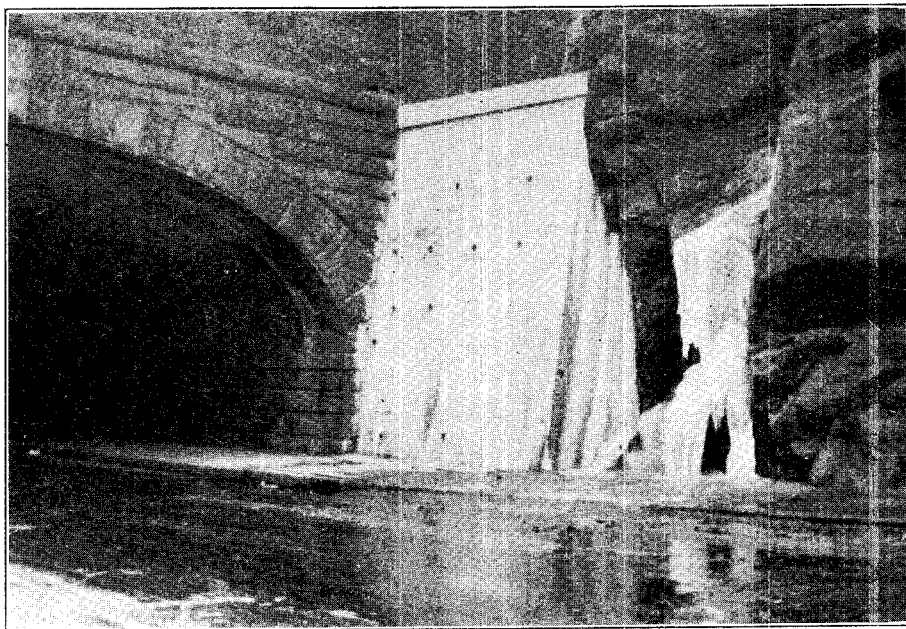
- 200 Linear Feet of Stone Steps to take up and reset.
- 250 Cubic Yards of Concrete.
- 40,000 Square Feet of Asphalt Mastic.

DANTE PARK

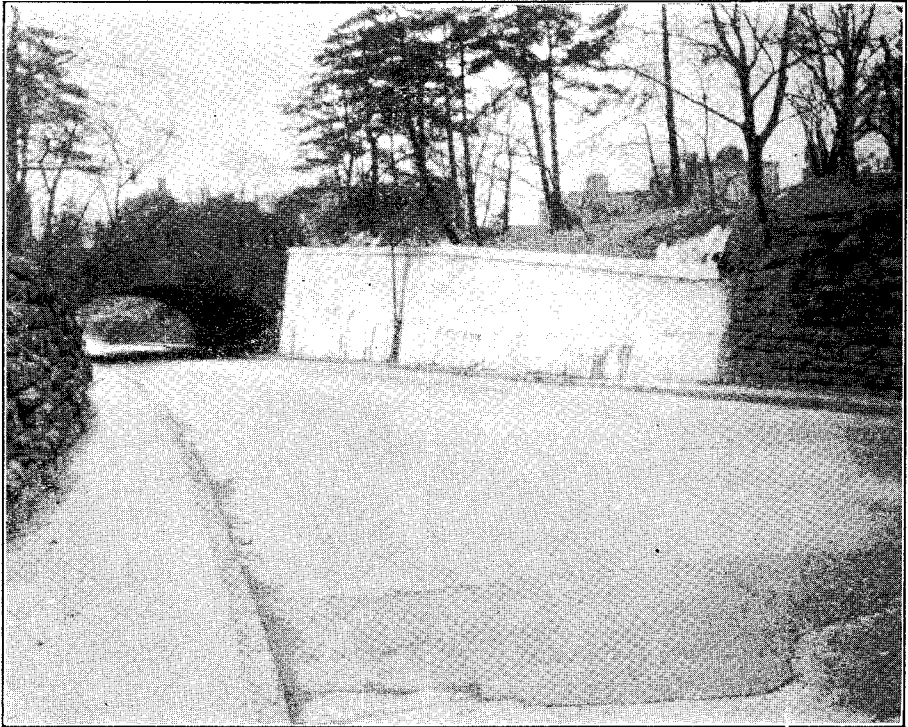
Under plans and specifications drawn up by this Department a contract was awarded to take down the existing rail fence around Dante Park and to erect instead a four foot wrought iron picket fence 310 feet in length and a four foot gate. This work was supplemented by an Open Market Order which consisted of taking up the then existing bluestone edging marking the inner edge of the park sidewalk and laying in the place of same a reinforced concrete curb approximately 316 feet in length.

FORT WASHINGTON PARK

To increase the number of tennis courts available in Fort Washington Park and to install a water supply to the courts, plans and specifications were



SOUTHSIDE 97th ST. TRANSVERSE ROAD WEST OF EAST DRIVE
LOOKING SOUTHEAST SHOWING CONCRETE FACING OF ROCK CUT



NORTHSIDE OF 97th TRANSVERSE ROAD EAST OF WEST DRIVE
LOOKING NORTHWEST SHOWING CONCRETE FACING OF ROCK CUT

drawn up and the contract awarded. The existing fences are to be moved to the new boundaries of the courts, a new drinking fountain is to be installed and a new water supply to be connected from the existing pipes.

Under this contract the estimate of the materials to be used is as follows:

- 930 Linear Feet of 2" galvanized water pipe.
- 620 Linear Feet of Chain Link Fence to be taken down and re-erected.
- 80 Linear Feet of new 10' Chain Link Fence to furnish and erect.
- 1 Drinking Hydrant.

HAMILTON FISH PARK

To protect passersby and neighboring buildings, plans and specifications were drawn up for 450 feet of eighteen (18) foot chain link fence for the easterly and southerly sides of the boys' playground in Hamilton Fish Park.

This contract was supplemented by an Open Market Order for enclosing the northern end of the boys' playground with a similar 18' chain link fence, thus separating the boys' and the girls' playgrounds. 196 feet of fence was required for this.

The westerly half of Hamilton Fish Park has been used in the past as a playground for small children and the numerous benches placed therein served to make that part of the block a plaza. In order to utilize this plot to greater advantage plans and specifications were drawn up to convert this area into a wading pool which in the fall and winter may be used as a roller and ice-skating rink.

This contract has been awarded and the amounts of materials estimated for this reconstruction are as follows:

- 360 Cubic Yards of Concrete.
- 17,700 Square Feet of Asphalt Mastic.
- 290 Square Feet of Asphaltic Flashing.
- 80 Linear Feet of Picket Fence.
- 4 Showers.
- 730 Cubic Yards of Excavation.
- 479 Linear Feet of Cast Iron Pipe.
- 27 Linear Feet of Vitrified Pipe.
- Resetting existing stone steps.

And numerous appurtenances as valves, stopcocks, surface basins, manholes and covers, manifolds for connections and brass hose connections.

HARLEM RIVER DRIVEWAY

Plans and specifications were drawn up, the contract awarded and the work done to replace the defective walk on Harlem River Driveway adjacent to High Bridge. The actual amounts of materials that were used in the performance of this work are as follows:

- 50.31 Cubic Yards of Concrete furnished and laid.
- 4063.32 Square Feet of Asphalt Walk Pavement furnished and laid.



SPEEDWAY—NORTH END
NEW CONCRETE BALUSTRADE
Harlem River Driveway

A survey was made, plans and specifications drawn up, and the contract awarded for furnishing and erecting 1019.75 linear feet of a four foot picket fence along the easterly boundary of Harlem River Driveway between 196th Street and Dyckman Street and the work completed.

Plans and specifications were drawn up, the contract awarded and the work completed for furnishing and erecting one hundred (100) permanent park benches on Harlem River Driveway between 164th Street and Dyckman Street.

This was followed by an Open Market Order for fourteen (14) benches on Dyckman Street adjacent to the Speedway.

Both of these contracts were supplemented by another contract for twenty-eight (28) benches between 190th Street and Dyckman Street.

HIGH BRIDGE PARK

A survey was prepared for improving the playground in High Bridge Park on the easterly side of Amsterdam Avenue and extending from about 169th Street to 172nd Street. Plans and specifications were prepared and the contract awarded for this work which will include the following:

- 1,100 Cubic Yards of Earth and Rock Excavations.
 - 1,120 Linear Feet of Vitrified Drain Pipes of various sizes.
 - 12 Walk Basins.
 - 4 Manholes.
 - 2,560 Square Yards of Playground Surfacing.
 - 17,500 Square Feet of Asphalt Walk with Concrete foundation.
 - 560 Linear Feet of 4 foot chain link fence.
-

Plans and specifications for a chain link fence in High Bridge Park at locations between 188th Street and a point about 2,200 feet northerly therefrom were prepared in 1927. This contract was advertised and awarded and the work done in 1928.

HUDSON PARK

In order to prevent damage to neighboring buildings and passersby, an 18' chain link fence was proposed around Hudson Park.

Plans and specifications were drawn up for this work which will consist of erecting approximately 777 linear feet of 18 foot chain link fence.

ISHAM PARK

A topographical survey, plans and specifications were made and the contract awarded for the improvement of the southerly end of Isham Park. This work will consist of approximately:

- 50 Cubic Yards of Excavation.
- 1,300 Cubic Yards of borrowed filling.
- 4 Walk Basins.
- 270 Linear Feet of 8" Vitrified Drain Pipe.

8,400 Square Feet of Cement Walk.
620 Square Feet of Cement Gutter.
190 Cubic Yards of Concrete Retaining Wall.
285 Feet of 3 foot Galvanized Chain Link Fence

THOMAS JEFFERSON PARK

A survey, plans and specifications were prepared, the contract awarded and the work done for tearing down the existing fence in Thomas Jefferson Park and erecting 1031.8 linear feet of four foot chain link fence, one (1) ten foot double gate and one (1) four foot gate around the School Farm Garden.

QUEENSBORO BRIDGE PLAYGROUND

The existing seven (7) foot picket fence at the southerly end of the playground was not sufficient to prevent damage to private property on the opposite side of the street. Plans and specifications were therefore drawn up and contract awarded for approximately 270 ft. of eighteen (18) foot chain link fence to replace the existing wrought iron fence.

RUTGERS PARK

The existing wrought iron picket fence in the two park plots at Rutgers Slip between South and Cherry Streets, being in a dilapidated condition, plans and specifications were prepared for its removal and the erection of 776 linear feet of four foot galvanized chain link fence.

CARL SCHURZ PARK

Since the playground in the South end of Carl Schurz Park is no longer large enough to accommodate the needs of the neighborhood, a survey was made, plans and specifications prepared and the contract awarded for enlarging and reconstructing this area.

This work when completed will consist of approximately the following items:

300 Cubic Yards of Excavation.
250 Cubic Yards of borrowed filling.
2,750 Square Yards of Playground Surfacing.
200 Cubic Yards of Concrete Retaining and curb wall.
75 Linear Feet of Edging to redress and reset.
1 Walk Basin.
50 Linear Feet of 6" Vitrified Drain Pipe.
20 Linear Feet of 1" Galvanized Water Pipe.
1 Drinking Hydrant Set Complete.
2 Existing Basins to be covered.
2,300 Linear Feet of 4 foot galvanized chain link fence to furnish and erect.

WASHINGTON SQUARE PARK

A new Comfort Station was erected in Washington Square Park.

OPEN MARKET ORDERS—1928

The walk in St. Gabriel's Park adjoining the West side of the Comfort Station was repaired with asphalt.

About 2,700 linear feet of edging along the margin of various walks in Riverside Park was advertised for.

Plans and specifications were drawn up to repair the asphalt walk leading northerly from the Menagerie in Central Park to and under the Bridge under the Transverse Road No. 1.

Plans and specifications were drawn up to lay about 1,900 square feet of cement walk pavement on the Westerly side of Riverside Drive between 142nd and 143rd Streets.

The setting of about 300 feet of concrete edging and laying 1,680 square feet of asphalt walk were done in Riverside Park between 148th and 149th Streets.

About 3,300 square feet of cement walk pavement was proposed for the Westerly side of Riverside Drive at 143rd Street.

Repairing parts of the roadway of Riverside Drive between 96th and 120th Streets was proposed.

Paving with asphalt pavement the sidewalk of High Bridge Park at the intersection of Dyckman Street and St. Nicholas Avenue.

The granite Balustrade on the West side of Riverside Drive at 151st Street was repaired.

The granite wall and pier on the Westerly side of Riverside Drive at 149th Street was reset.

Nine (9) stone benches in the Broadway plots were replaced.

Various Open Market Orders were drawn up for the repairing of parts of the water system in Central Park.

New fire hydrants at various points in Central Park were also obtained through Open Market Orders.

Several Open Market Orders were let for repairs to various buildings in the Parks.

MISCELLANEOUS MAPS AND SURVEYS

The following are maps and surveys prepared by this Department:

Topographical survey for a proposed playground in Morningside Park.

Topographical survey for proposed walks in Central Park.

Survey of the manure pits in the Storage Yard.

Notes and estimates for the repairs to the Pulitzer Fountain.

Lines and grades for five pools in the Menagerie.

Topographical survey for the areas of proposed buildings in Manhattan Square.

Estimate and survey for the widening of the drive on the West side of the Sherman Statue—Plaza entrance to Central Park.

A survey and estimate for a retaining wall on the West side of the Wading Pool in the Heckscher Playground, Central Park.

Estimate for the repairs to the concrete curb of the service road of Riverside Drive from 99th to 113th Streets.

Topographical surveys in St. Nicholas, J. Hood Wright, Carl Schurz, High Bridge, Inwood Hill and Isham Parks for various improvements.

Topographical survey of plot of ground located at 134th to 135th Streets from Amsterdam to Convent Avenues.

Survey of Riverside Drive from 104th to 120th Streets locating all trees, benches, basins, etc., for the proposed widening of walks and park strips on the Drive.

Survey of Jackson Square Park and Union Square Park in connection with subway repairs.

Estimating repairs to walks in various parks in Manhattan.

Plan showing proposed retaining wall along the right of way of the New York Central R. R. between 160th and 166th Streets.

Sketch showing area West of New York Central R. R. North of 158th Street for dumping purposes.

The work of the office also included the tabulation and printing of bids for the Park Departments of all the Boroughs.

REPORT OF CONSULTING ENGINEER

Filling operations have progressed in Riverside Park Extension (72nd Street to St. Clair Place), Fort Washington Park, north of 158th Street and south and north of 174th Street, Inwood Hill Park, north of Dyckman Street, and also in Isham Park at the Harlem Ship Canal.

It is advisable from an Engineering and economical standpoint, that all areas under the jurisdiction of the Park Department now under water be filled in as soon as possible in order not to delay development of park areas so urgently needed in this city, first—because of the availability of large quantities of clean rock and earth material now being excavated in connection with subway construction and secondly for the reason that at least a minimum of two years must be allowed to permit proper settlement to take place, before park treatment of any kind is placed thereon.

While waiting for settlement to take place there probably would be no objection to this "newly made land" being used as temporary playgrounds for both children and adults.

RIVERSIDE PARK EXTENSION

The actual work of filling and grading in Riverside Park Extension from 72nd Street to St. Clair Place has progressed considerably during the year 1928. The total acreage of new made land is approximately 60 acres.

It is impossible to maintain plant life on fill of this character and it will be necessary to cover the present fill with top soil after it has been brought to the proper levels and grades shown on the proposed plan for the Improvement of Riverside Park.

This level plateau, immediately north of 72nd Street, in the meantime may be used for playground and recreational facilities.

When the West Side Improvement plans have been approved and adopted by the Board of Estimate and Apportionment it is intended to do all other necessary landscaping, etc., in accordance with the Park Department plan for the Improvement of Riverside Park, dated June 1, 1927.

On June 21, 1928, Mayor Walker appointed a committee of Architects to study the architectural and landscaping features of the entire West Side Improvement. Park Commissioner Walter R. Herrick and Albert V. Sielke, Consulting Engineer, are members of this committee.

The plan for the West Side Improvement directly affects Riverside Park and Inwood Hill Park, as well as Fort Washington Park.

The land at this location extends approximately 370 feet west of the westerly right-of-way line of the N. Y. C. R. R.

The width of the land at about 84th Street extends approximately 240 feet west of the N. Y. C. R. R.

New made land at about South of 114th St., extends approximately 200 feet west of the right-of-way line of the N. Y. C. R. R.

FORT WASHINGTON PARK—North of 158th Street

Before filling and grading operations were started in this section, this area had a number of dilapidated boat houses fronting the water's edge. This section is now being filled in and graded to the U. S. bulkhead line, without any expense to the city. In fact, the city is receiving payments from the contractor for the privilege of depositing the rock and earth fill. Up to date, approximately $3\frac{1}{2}$ acres of new land has been made.

The department, however, has not as yet prepared any plans for this section.

It is planned to eventually carry this fill north to 179th Street and fill out to the U. S. bulkhead line, making approximately 28 acres of land.

SOUTH OF 174TH STREET

The work on this section has practically just started and it is planned to carry the fill to the U. S. bulkhead line connecting with the land now being made north of 158th Street. When the filling has been completed approximately 21 acres will have been added to the park area from 158th Street to 174th Street.

NORTH OF 174TH STREET AND JEFFRIES LIGHT HOUSE

This section is practically all filled in, although there still remains a small amount of work yet to be accomplished. Six acres of new park land have already been made from earth and rock excavated from the new subway and material obtained from the excavation for the new Hudson River Bridge anchorage foundations. This section is approximately 1300 feet long and the fill is to extend approximately 250 feet west of the N. Y. Central Railroad.

When the work of filling has been completed, it is intended to landscape all these new areas to harmonize with the surrounding park territory.

INWOOD HILL PARK

Filling operations are now under way in Inwood Hill Park along the Hudson River waterfront, extending north from Dyckman Street to about the centre line of 212th Street, approximately 1400 feet in length. The fill is to extend to the U. S. bulkhead line, which is about 185 feet west of the right-of-way line of the New York Central Railroad. An approximate area of $9\frac{1}{2}$ acres of new land has been added to the park and at some future time it is intended to lay out and plan this park area to harmonize with the surrounding park land.

ISHAM PARK

This section, facing the Harlem Ship Canal, running approximately from Isham Street to West 218th Street, is to be extended to the U. S. bulkhead line.

Filling is now going on and this is being graded for future park treatment. Considerable difficulty is being experienced in this area due to the narrowness of the Harlem Ship Canal. The great weight of the fill deposited has a tendency to create a mudwave and there is danger of shoaling the channel. It is hoped, however, to deposit the fill in such manner as to keep the channel open and not endanger navigation.

The additional new land created in this section is approximately 2½ acres. When the work of filling and grading has been completed it is planned to lay out this park area.

SUMMARY

The total area of new park land acquired through dumping operations is as follows:

RIVERSIDE PARK EXTENSION:

| | | |
|---------------------------------|----------|----------|
| From 72nd to 79th Streets..... | 10 acres | |
| From 79th to 96th Streets..... | 18 acres | |
| From 96th to 129th Streets..... | 32 acres | |
| | | 60 acres |

FORT WASHINGTON PARK, HUDSON RIVER WATERFRONT:

| | | |
|--|----------|----------|
| From 158th to 165th Streets..... | 3½ acres | |
| From 172nd to 174th Streets..... | ½ acres | |
| From 174th St. to Jeffries Lighthouse..... | 6 acres | |
| | | 10 acres |

INWOOD HILL PARK:

| | | |
|--|----------|----------|
| From Dyckman Street to 212 Street..... | 9½ acres | 9½ acres |
| ISHAM PARK..... | 2½ acres | 2½ acres |
| Making a total of..... | | 82 acres |

In addition to obtaining the new park areas, the city has received payments from the contractors for the privilege of depositing the earth and rock fill.

It is estimated that the value of the new made land acquired through dumping operations, together with the money saved by providing dumps for subway contractors, amounts to over \$25,000,000.

This work of filling and grading when completed and properly landscaped, will provide additional areas and places for recreation for the benefit of all.

BUREAU OF RECREATION

The motto of the Bureau of Recreation, Department of Parks, has been "Recreation for All" and it has been the aim to supply clean and wholesome recreation for the child and adult.

Tournaments and contests of all kinds were held in the park playgrounds, field houses and gymnasiums, and the large attendance of the past year has shown the great interest of the general public.

Realizing the importance of active and passive forms of recreation, the Department adopted both for the betterment and enjoyment of the children and adults.

Cooperation with all recreational agencies and city departments was sought and all made a special effort to help in one way or another.

PURPOSE OF BUREAU OF RECREATION

The ultimate object of the Bureau of Recreation is to provide clean and wholesome recreation for the child, youth and adult in order that their leisure hours may be assets to them and to the City of New York. This aim is attained by planning activities which will hold the interest of the individual and make him or her better, physically, mentally and morally.

Character building is a very important aim of the Bureau of Recreation. For the park playground, it can be said that it offers to the children of New York the priceless gift of a place to play where they can have fresh air, sunshine and outdoor exercise, of which they are so sorely in need. The trees and lawns around some of our playgrounds and athletic fields have a soothing and healing effect on the minds of the children and adults using them.

Experience is offered to the child in an animated, stimulating, miniature society, which presents many of the situations one encounters later in adult life. The playground develops the cooperator, the competitor, the rival, the leader, the follower, the friend. The game fosters loyalty to one's fellows, to one's team, and to one's playground. It accustoms one to obey the captain and to work for the good of the whole rather than for one's self. It develops facility in concerted action. There is a quickening of sense perceptions and the child not only learns to be alert, but he learns the value of alertness and inhibition.

In being required to abide by the rules of the game under circumstances which sorely try the temper, one acquires self-control. In short, it can be said that the children of New York City are better mentally, morally and physically as a result of attending the park playgrounds. The well known psychologist, E. D. Angell, well describes the value of play when he says "Play is an education and it is an education that gives to the young pupil strength, health, alertness, aggressiveness, sympathy, friendship and courage and better than all, it paves the way for a deeper morality that would come in no other way."

Our gymnasiums and field houses have been crowded at night with neighborhood clubs indulging in wholesome forms of recreation. Mothers' clubs also had their meetings and parties wherever a field house was connected with the playground.

FACILITIES

The Bureau of Recreation has under its supervision 26 park playgrounds and 9 public gymnasiums open the year round, 15 additional summer playgrounds, 2 tennis fields (44 courts), 6 fields (Central Park for general recreation), four recreation piers, 16 athletic fields and 28 baseball diamonds.

ACTIVITIES AND PROGRAM OF WORK

The activities throughout the year and the program of work includes: Baseball, basketball, soccer football, tennis, handball, volley ball, swimming, skating, hockey, captain ball, punch ball, athletic meets, swimming meets, tournaments, club work, social gatherings, moving pictures, concerts, celebration of July Fourth, and other holidays, excursions, boat rides, roller skating contests, marble shooting contests, coasting, ice-skating, Winter Sports Carnival, exhibitions by experts in sport lines, baseball league for men, cooperation with all recreational agencies, cooperation with Mayor's Committee on Municipal Athletic Activities.

PLAYGROUND ORGANIZATION

As far as possible, the plan of self government was worked out in all of our playgrounds. The children were invited to join sanitary and health squads, the captains of which were called "Health Commissioners." A monitorial system also proved very popular and relieved a great deal of the strain of constant supervision on the part of the playground director. After consultation with the Assistant Supervisors and Field Staff it was decided that each Playground Director should make out a definite program which could be faithfully followed throughout the season. Each Director was required to make provision in his program for the following activities:

BOYS' ACTIVITIES

BASEBALL—INTER-PLAYGROUND TOURNAMENT AND INTER-PLAYGROUND LEAGUE

This league organized within each playground proved most successful and popular with the smaller boys. Each playground was represented by at least 8 teams.

BASKETBALL AND RELATED GAMES—Overhead Pass, Combination, Pass Ball, Three, Two, One, etc.

ATHLETICS—Two athletic events were held each day. The children were given points and prizes were awarded to those having the highest number of points at the end of the season.

NOVELTY EVENTS—Elephant Walk, Penny Placing, Nose and Ear Tag, Chicken Fight, Blind Boxing, Hand Wrestling, etc.

QUIET GAMES—Checker Games proved most popular and quiet games will function from now on in all outdoor playgrounds. The innovation proved most successful.

PLAYGROUND EQUIPMENT—Gymnasium Work, Slides, Swings, Jungle Gym, See-saws.

SOCCER AND ASSOCIATION FOOTBALL

GIRL'S ACTIVITIES

Dancing—National and Folk

Quiet Games—Checkers—Dominoes—Parchesi

Story Telling

Handicraft

Playground equipment

ATHLETICS

In the matter of athletics for girls, it was agreed that those athletic activities which prepare for life by developing the girl mentally, morally and physically are good. Girls should have good lungs, a good digestion and a good heart, and activities for girls were selected which were interesting and which would bring results. Leadership, courage, self-reliance, good judgment and will power were aims in girls' athletics as well as the athletic activities for the boys. Some of the athletic activities for the girls were: All-Up Relay, Pass Ball Relay, Short Dashes, Basketball, Throw for Distance, Relay Races, Punch Ball, etc.

PLAYGROUND EQUIPMENT FOR GIRLS

Swings, Slides, Bagatelle Board, Balancing Beam, Rope Skipping, Club Work.

KINDERGARTEN CHILDREN

Free Play, Swings, Hammocks, Marching, Quiet Games, Blocks, Scrap Books, Kindergarten Games, Singing Games, Story Telling, Handiwork.

GYMNASIUM ORGANIZATION

Realizing that the gymnasium should be a social factor and a place where harmonious development of the body can be obtained, emphasis was placed on club formation and the broader aims of physical education. No effort was made on the part of gymnasium directors to produce prodigies of strength or to enable men to perform difficult feats, but an effort was made to organize the boys and young men using the gymnasium into clubs, to interest them in different forms of athletics and gymnastics and to give to each individual using the gymnasium an opportunity to obtain a harmonious development. The creed of our gymnasiums was that each person using them should be trustworthy, loyal, helpful, friendly, courteous, respectful, cheerful, brave and clean of mind and body. These were the laws of conduct and they were insisted upon by all directors. An effort was made to accommodate not only neighborhood clubs and individuals, but also all individuals and industrial groups employed in the neighborhood of the gymnasium. The activities in the gymnasium included:—Basketball, volley ball, boxing, wrestling, track athletics, dancing, heavy and light apparatus work, club meetings, etc. Emphasis was placed on informal work and although no experiment was carried out the director believed that harmonious development could just as well be obtained through informal as formal work. Tournaments and point contests were held at different times during the year to discover the best basketball teams and the best athletes. The location of our public gymnasiums follows:

East 54th Street near First Avenue
West 28th Street near Ninth Avenue
West 59th Street near Tenth Avenue
Carmine Street near Clarkson Street
Rutger Place near Jefferson Street
Cherry and Oliver Streets
134th Street near Lenox Avenue
Hamilton Fish-Houston and Pitt Streets
John Jay-77th Street and East River.

PLAYGROUND TOURNAMENTS AND CONTESTS

BASEBALL

Baseball, our national game, was more popular than ever before with the boys of the park playgrounds. Each playground organized its own baseball league and league games were held every afternoon at three o'clock. Club organization was necessary and emphasis was placed on loyalty to the team and playground. A loyal following was always found cheering their team to victory. A round robin inter-playground baseball tournament was also organized for boys 5 feet 2 inches in height.

Hundreds of children often traveled with their teams and evidence of friendly rivalry and good sportsmanship were always apparent. The boys were taught to fight hard to the end of each game and many victories were won in the 9th inning. CHELSEA won the title of Manhattan Champions with QUEENSBORO, second, and HAMILTON FISH, third.

BASKETBALL

The skill and accuracy required in basketball appeals not only to the large boy but also to the small boy. Wherever possible basketball leagues were organized within the playground and a definite schedule was posted. An inter-playground tournament was organized for boys 5 ft. 2 in. in height.

HANDBALL

Handball is becoming more popular every day. Emphasis is placed on intra-playground tournaments in as much as it was impossible to arrange an inter-playground tournament because many of the playgrounds were not equipped with handball courts. Wherever possible, however, the large stone pavilions in our parks were used for this purpose. It is hoped that during the coming year it will be possible to have additional courts constructed in all of our playgrounds.

MARBLE SHOOTING CONTESTS

Marble shooting reached the peak of its popularity with the boys of the park playgrounds last year. Contests were held weekly in all park playgrounds and a championship was planned to bring out the best marble-shooters of New York City. This took place at City Hall Park and Mayor James J. Walker was an interested spectator. After the contest Mayor Walker congratulated the winner—Abraham Fogelman, 56 Avenue C, of Hamilton Fish Park Playground.

TENNIS

Having issued 9055 tennis permits at \$1.00 per permit little need be said of the popularity of the 28 tennis courts at Central Park and 16 at Fort Washington Park. The attendance records showed an average attendance of 1500 on Saturdays and Sundays, and an average of 800 at Fort Washington Park. None of the players were permitted to play longer than two hours, so great was the demand. Tournaments were arranged for men, women, boys and girls, singles and doubles, and the entries totaled about 1500. The winners of the tournament were as follows:

CENTRAL PARK TENNIS CHAMPIONSHIP

MEN—DOUBLES

- 1st—Jack Gleiber, 929 45th Street, Brooklyn, N. Y.
M. Redner, 102 W. 92nd Street.
- 2nd—Ralph Newman, 271 Madison Avenue.
Frank D'Aulby, 82 W. 92nd Street.

MEN—SINGLES

- 1st—Gabriel Lyons, 647 West 174th Street.
- 2nd—Teddy Segal, 206 W. 112th Street.

WOMEN—SINGLES

- 1st—Helen Germain, 309 E. 71st Street.
- 2nd—Matilda Jacobs, 383 Central Park West.

MEN—JUNIOR SINGLES

- 1st—Raymond Stone, 29 W. 46th Street.
- 2nd—Sidney Berger, 110 W. 96th Street.

ATHLETIC MEETS

Athletic meets were held regularly in all park playgrounds. Points were given for first, second and third places and these were tallied at the end of the season to discover the best athletes of the playground. The program of a weekly athletic meet included such events as potato races, relay races, 50 yd. dash, obstacle races, flag races, sack races, roller skating contests, running broad jump, high jump, etc.

MINIATURE SAIL BOAT CONTEST

A Children's Miniature Sail Boat Contest was held at Conservatory Lake, 72nd Street, Central Park early in June. The boys and girls from Park Avenue rubbed elbows with the boys and girls from the East Side. Equal excitement made them brothers and sisters as they hopped around hoping that their boats would catch an advantageous wind or avoid collision.

Prizes consisted of model sailboats, silver cups and silver and bronze medals.

The winners were as follows:

HOME MADE CLASS

First—Raphael Friedman, 152 East 22nd Street.
Second—Rohen MacDermeid, 344 West 47th Street.
Third—Leonard Brown, 49 West 72nd Street.
Fourth—Donald Miller, 45 East 62nd Street.

15" CLASS

First—Thos. Wood, 1388 Lexington Avenue.
Second—Allen Randolph, 225 Central Park West.
Third—Carl Rulti, 358 West 120th Street.
Fourth—Jas. Mackay, 231 East 145th Street.

25" CLASS

First—Edward Tesar, 338 E. 73rd Street.
Second—Richard Clemens, 3611-31st Avenue, L. I. City.
Third—Vaino Akola, 329 Elwood Avenue, Pelham, N. Y.
Fourth—Geo. J. Strickler, 345 W. 86th Street.

40" CLASS

First—William Wood, 1388 Lexington Avenue.
Second—Jas. Caruso, 599 W. 176th Street.
Third—Vincent Mackey, 231 E. 74th Street.
Fourth—Thos. S. Welton, 4 E. 95th Street.

55" CLASS

First—John Mackey, 231 E. 74th Street.
Second—D. Bond, 122 W. 62nd Street.
Third—Gerald Donnolly, 22 Calumet Avenue, Hastings, N. Y.
Fourth—John Charters, 474 Grand Avenue, Astoria, L. I.

70" CLASS

First—John Olsen, 326 E. 65th Street.
Second—M. Ehrich, 339 W. 71st Street.
Third—Chas. De Soto, 105 E. 3rd Street.
Fourth—John Garrick, 9 Pinehurst Avenue.

MOTOR BOATS

First—Justin Caminez, 303 Lexington Avenue.
Second—Richard Ross, 1447-3rd Avenue.
Third—F. Smith, 1130 Woodycrest Avenue.

CANOE REGATTA

Another innovation conducted by the Bureau of Recreation was the Canoe Regatta conducted on the 72nd Street Lake, Central Park on July 4th. This Regatta was witnessed by approximately 5,000 persons. Among the clubs competing were the Washington Canoe Club, North Jersey Canoe Club, Black Hawk Canoe Club, Knickerbocker Canoe Club, Wanosca Canoe Club, Yonkers Canoe Club, Inwood Canoe Club, Island Canoe Club. The point trophy was donated by Sir Thomas Lipton.

MINIATURE AIRPLANE CONTEST

A Miniature Airplane Contest was held during July at the Sheep Meadow, Central Park, and was attended by approximately 2,000 persons. As a result of the interest and enthusiasm displayed the Playground Directors decided to conduct miniature airplane contests in all of our park playgrounds.

HARMONICA CONTEST

Realizing the value of music and the fact that our playgrounds are not equipped with pianos, it was decided at a conference of our Playground Directors to conduct an Annual Harmonica Contest. The harmonica is a very cheap musical instrument. As a result of a survey it was found that many of the boys already had harmonicas and were quite expert in playing them.

Harmonicas were donated by the Hohner Company and their cooperation was requested in sponsoring the contest. They were very glad to cooperate in donating musical instruments to the winners of the contest.

The final contest was held at the band stand on the Mall, Central Park; 250 children competed in the final contest. Prominent musicians acted as judges and there was an attendance of approximately 3,000 persons.

CHILDREN'S DAY—JUNE 16TH

June 16th was designated as Children's Day and an effort was made to focus attention on the needs of the children and the play facilities provided by the City of New York. The various business concerns throughout the country cooperated to make this Children's Day a success and donated prizes to the winners from the respective playgrounds.

Exercises were held in all of the park playgrounds of Manhattan and included folk dancing, athletic contests, games, speeches by prominent persons, and presentation of toys and hair ribbons for the children.

OUTINGS

Outings were arranged from many of the playgrounds. Columbus and Carmansville Playgrounds were very successful in having several hundred mothers attend these outings with their children.

CHILDREN'S PET SHOW

With the idea of teaching children kindness to animals a Children's Pet Show was held at Columbus and Hamilton Place Playgrounds. Both proved most interesting and successful. The American Society for the Prevention of Cruelty to Animals was kind enough to donate the prizes and some of their officials acted as judges. This is now an annual event of the Bureau of Recreation.

PARENTS' EXHIBIT—GRAND CENTRAL PALACE

A program of activities was arranged in connection with the Exhibit held under the auspices of the United Parents Association. Complimentary letters were received from the Playground and Recreation Association of America regarding the part taken by the Bureau of Recreation.

MAY DAY—CENTRAL PARK

At the request of the Department of Health, the Bureau of Recreation cooperated to make the May Day Child Health Celebration a success. A program of folk dances was given by the children of the park playgrounds and the P. S. A. L.

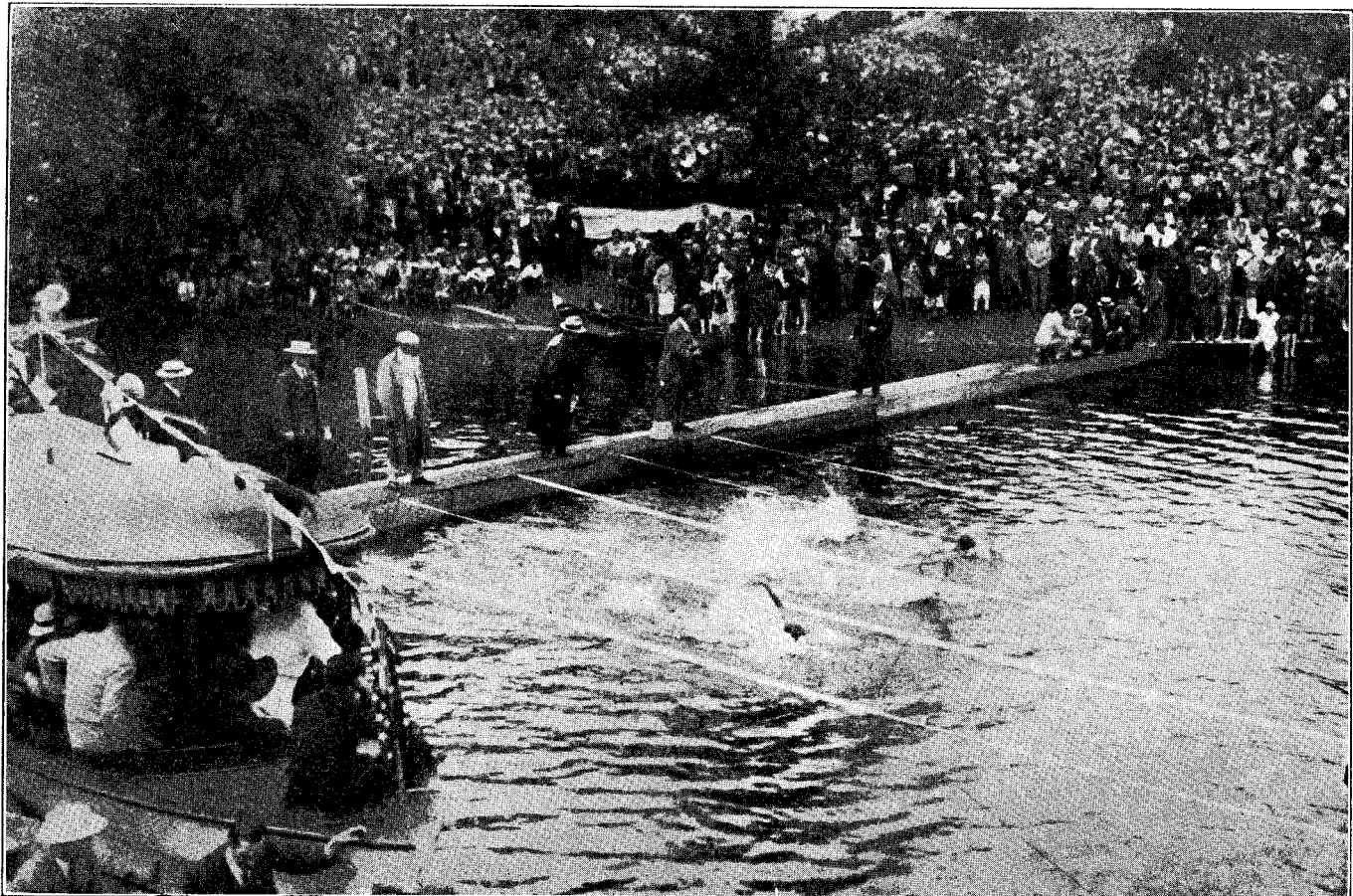
JACKS CONTEST

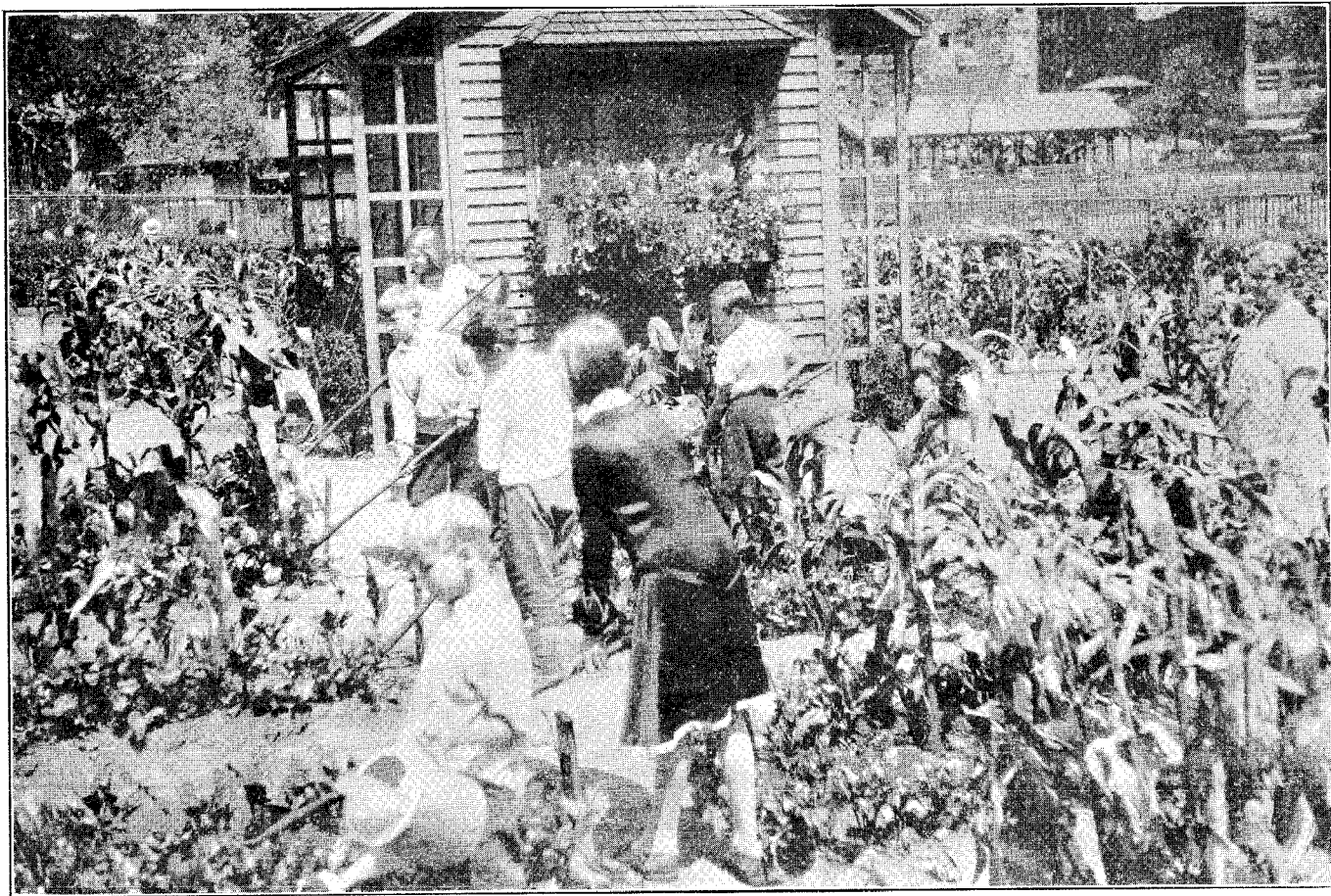
During the past Summer quiet games for children were encouraged. The Playground Directors find that the children do not like to play active games on a hot summer's day but would rather play some quiet game. Accordingly, tournaments and contests were conducted in the quiet games, such as checkers and jacks. A special feature was made of the Jacks Contest and considerable interest was shown by the girls of the respective playgrounds. It was amusing to note the skill that some of the girls showed in picking up the jacks.

At Carmansville Park Playground the mothers took a special interest in the contest and held a Jacks Contest for the mothers of the neighborhood. The rules of the contest and the winners of the final contest follow:

RULES FOR THE JACKS CONTEST

1. Games to be played with ten jacks and medium sized rubber ball.
2. One scramble. Must be made with one hand.
3. Touch jack is a miss.
4. Top jack is a miss.
5. One jack on top of two jacks is a miss.
6. Drop jack is a miss.
7. Jack left in hand after making a scramble is a miss.
8. Ball must be caught in one hand.
9. Ball may not be caught against any part of person.
10. Jack is not "hang jack" when it has two feet on table.





LITTLE FARM HOUSE AT SEWARD PARK GARDEN
Attached to each school farm is a small cottage for tools and garden equipment



CITY FARMERS AND THEIR SPECIAL CROP OF BROOM CORN GROWN IN SEWARD PARK FOR
OBSERVATION AND

Anna Davidson of Morningside Park Playground (One Hundred and Twenty-third Street) won the Championship for the Borough of Manhattan.

JULY 4TH CELEBRATION

Independence Day was celebrated in all of our parks and playgrounds. Athletic Meets and band concerts were held throughout the city. The total number competing was 35,000. Seventeen hundred officials volunteered their services and every athletic club cooperated to make the affair a success. Spirited cooperation featured all the meets and the youngsters showed as much enthusiasm and interest in winning prizes as they did when the day was celebrated with fire-works and life and limb was in danger.

1,000 sets of prizes, three to a set, were offered in competition, making 3,000 individual prizes awarded for the athletes. These prizes were offered for athletic events, folk dancing, festivals and patriotic pageants which combined to provide the day's activities. The program of the Greater City was under the jurisdiction of the Department of Parks, Manhattan.

SWIMMING MEET—CENTRAL PARK

For the second time a Swimming Meet was conducted at the large lake, 72nd Street, Central Park on August 12th. The portion of the lake used was sterilized and every sanitary precaution was taken before the meet was actually conducted.

Inspections and tests of the water were made by the Department of Health. The Daily News Sponsored this Swimming meet and donated all the prizes. Cooperation was also received from the various swimming associations and the meet was sanctioned by the Amateur Athletic Union.

ROLLER SKATING CONTEST

Owing to the number of street accidents from roller-skating, an effort was made to interest the boys and girls and get them to roller-skate in our public parks and playgrounds.

Roller-skating was permitted on the Mall, Central Park and the final championships were held during October. The winners from the respective playgrounds competed in these championships and the five boroughs were represented. Herman Rothman of Seward Park Playground won the race for boys (4' 8"); Alfred Zito of Gravesend Playground, Brooklyn, won the race for boys (5' 3") and Hyman Green of Bushwick Playground won the race for the Unlimited Class. Pearl Rosenblatt of Tompkins Square won the event for girls (4' 8"); Sarah Petrone of Gravesend Playground the event for girls 5' 3" and Josephine Burke of St. Catherine's Playground won the event for the Unlimited class.

To the winners of first, second and third places in each event were awarded solid gold, silver and bronze medals donated by the New York World.



PUSHMOBILE AND SCOOTER RACES — THE MALL, CENTRAL PARK

PUSHMOBILE AND SCOOTER CONTEST

Another Fall activity was the Pushmobile and Scooter Contest held in all of our Park Playgrounds. An effort was made to have the children make their own scooters and pushmobiles, and special prizes were given to the winners in the home-made type race. The World also cooperated with the Bureau of Recreation in conducting these events, and a very successful final contest was held on the Mall, Central Park during October. Music was provided for this occasion.

SOCCER FOOTBALL

Every season has its particular sports. Soccer Tournaments are conducted in all of our park playgrounds where there are sufficient facilities during the months of October and November.

Permission is also given to the Public Schools Athletic League to conduct their Soccer Tournament in one of our park playgrounds.

SILVER SKATES DERBY AND METROPOLITAN SKATING CHAMPIONSHIPS

For the past four years the Daily News has requested the Bureau of Recreation to conduct the Silver Skates Derby. This Department in turn received cooperation from the Middle Atlantic Skating Association; New York Skating Club; Winter Sports Club, as a result of which the leading speed skaters of the country participated in the Silver Skates Derby.

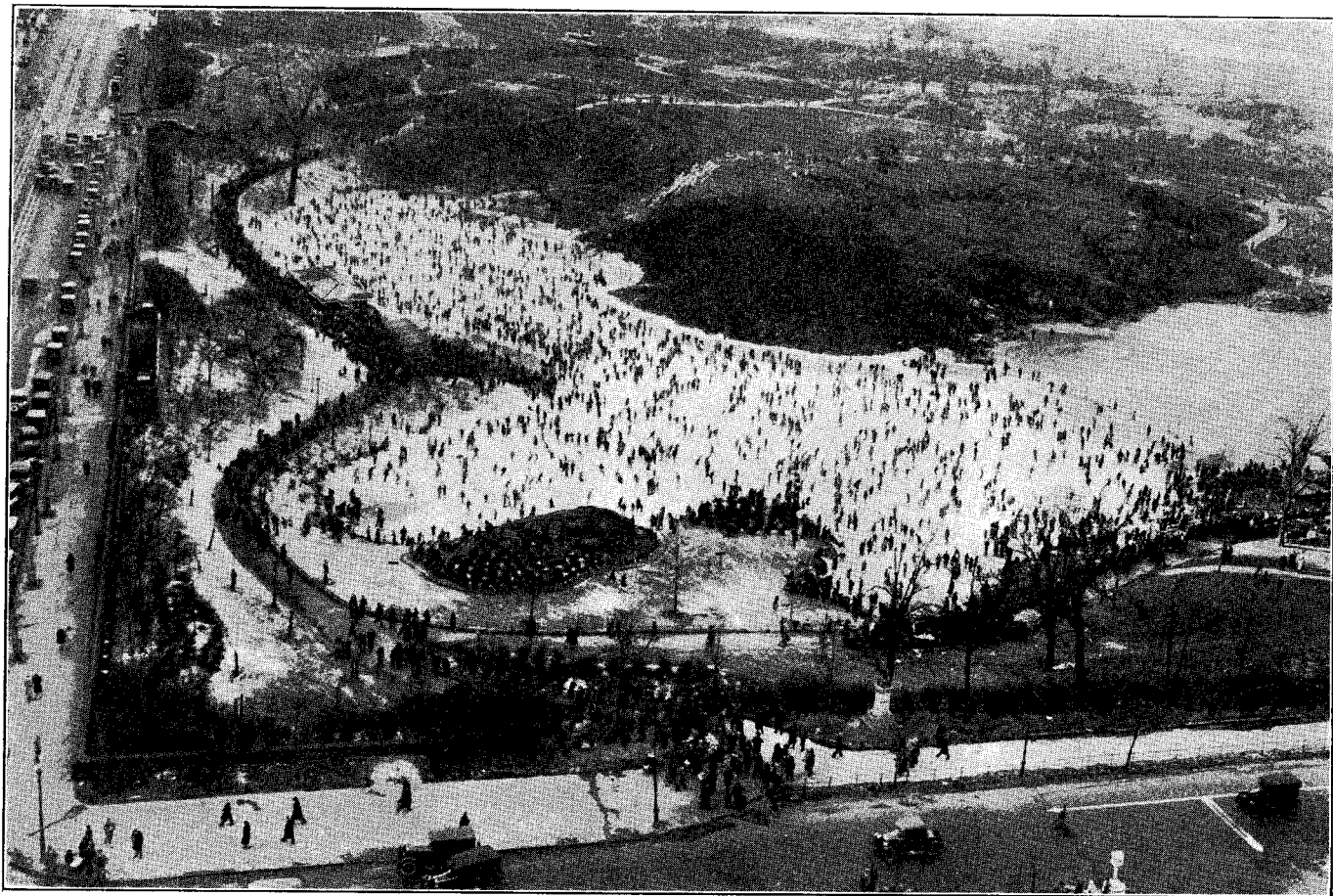
It was estimated that approximately 25,000 persons attended the Carnival. Music was provided and a good afternoon's entertainment was given to those present. Exhibitions of figure skating, pair skating, and waltzing together with barrel jumping were given.

The Metropolitan Skating Championships took place on February 4th on the Conservatory Lake, Central Park. There were exhibitions of figure and fancy skating. All of the important speed skaters from the Metropolitan District within a radius of twenty-five miles of New York City took part. Cooperation was received from the Middle Atlantic Skating Association, the New York Skating Club and the various indoor skating rinks.

MOTION PICTURES

Realizing the value of motion pictures as a source of education as well as recreation, the Bureau of Recreation has cooperated with a number of agencies engaged in social welfare work in many of our small parks and recreation piers.

Permits were issued to Hudson Guild, 436 West 27th Street; Bureau of Health Education, Dept. of Health, 505 Pearl Street; New York Edison Company (Educational Extension Bureau) 393-7th Avenue; to show these pictures, which were exhibited throughout the Borough of Manhattan and supervised by the Field Staff of this Bureau.



In many instances band concerts were scheduled in connection with the exhibitions of motion pictures and furnished wholesome and educational entertainment to thousands of spectators, young and old, throughout the summer season.

COOPERATION WITH OUTSIDE AGENCIES

Some of the Organizations that this Department has been able to assist and cooperate with are:

Public Schools Athletic League, Amateur Athletic Union, City Recreation Committee, Women's City Club, Playground and Recreation Ass'n of America, Boy Scouts of America, Leading newspapers and publications, Mayor's Committee on Municipal Athletic Activities, Metropolitan Skating Ass'n, United Neighborhood Houses, Inc., Community Councils, Russell Sage Foundation, Boy's Federation, Public, Private and Parochial Schools.

CHILDREN'S HOLIDAY FESTIVAL

Owing to the number of poor children in New York City and the fact that each year the Playground Directors report any number of cases that are not reached by a charitable agency or settlement, the Children's Holiday Festival was held at the New Palm Garden on December 26th. An entertainment was given by the talented children of respective park playgrounds.

The merchants throughout the City donated sufficient fruit, crackers and candy so that each child was well provided. The program of this festival, which was attended by 1,500 children follows:

ALL CHILDREN FROM THE PARK PLAYGROUNDS ASSEMBLE

SelectionsChristmas Carols

CINDERELLA IN FLOWERLAND

A Playlet in Two Scenes.

(Given by the children of Carl Schurz, Carmansville, Columbus, Corlears Hook, Hamilton Fish, Hamilton Place, St. Catherine's, St. Gabriel's and Seward Park Playgrounds.)

CHARACTERS:

| | |
|--------------------------|--|
| Cinderella (Daisy) | St. Catherine's Park Playground |
| Fairy God-Mother..... | Carl Schurz |
| Bonnie Bee..... | Hamilton Fish |
| Robin Red..... | Hamilton Fish |
| Prince Sunshine..... | Hamilton Fish |
| Guests | Corlears Hook, Hamilton Fish and Seward |
| Little Robins..... | Carl Schurz, Carmansville, DeWitt Clinton, Hamilton Fish |
| Sunbeams | St. Gabriel's, Hamilton Fish and Hamilton Place |
| Butterflies | Columbus |

PROLOGUE

Scene 1: Robin Red extends invitation to all Flowers to attend ball of Prince Sunshine.
Scene 2: Ballroom of Prince Sunshine.

Distribution of Candy, Fruit and Crackers.....*Santa Claus*

RETURN OF CHILDREN TO PLAYGROUNDS

RECREATIONAL PROGRAM

| | |
|----------------------------|---------------------------------|
| Soccer | FESTIVALS AND SPECIAL OCCASIONS |
| Checkers | Concerts |
| QUIET GAMES AND ACTIVITIES | Motion Pictures |
| Checkers | Pageants |
| Dominoes | Exhibitions of athletic skill |
| Parchesi | Festivals |
| Bagatelle Board | Parties |
| Story Telling | Bazaars |
| Handicraft | May Day on the Green |
| Kindergarten Activities | Get-together Parties for |
| Swings | Municipal Employees. |
| See-saws | CLUBS |
| ATHLETICS (BOYS AND GIRLS) | Athletic |
| Active Games | Civic |
| Gymnastic Games | Camp-fire |
| Swimming | Community Scouts |
| Skating | Dramatic |
| Track and Field | Glee |
| Wrestling | Handicraft |
| Coasting | Junior Police |
| Folk Dancing | Military |
| Aesthetic Dancing | Orchestral |
| National Dancing | Philanthropic |
| LEAGUE AND TOURNAMENTS | Social |
| Baseball (small boys) | Mothers' Clubs |
| Baseball (men) | ENTERTAINMENTS |
| Basketball | Ice Skating Carnivals |
| Volley Ball | Roller Skating Carnivals |
| Handball | Athletic Meets |
| Tennis | July 4th Celebrations |
| Horse-shoe Pitching | Christmas Festivals |
| Marble Shooting | Baby Parades |
| Jacks contests | Safety Day Exercises |
| Slides | Open Meetings |
| | Water Carnivals |

EQUIPMENT

PLAYGROUNDS—Swings, Slides, See-saws, Jungle-Gym, Balancing Beam, Hammocks, Blocks and small units of play equipment.

GYMNASIUMS—All units of light and heavy apparatus.
The total number of permits issued in 1928—14,880.

PERMITS for the respective activities were as follows:

PERMITS ISSUE

| | |
|---|-------|
| Field Day Permits..... | 24 |
| Soccer Football..... | 447 |
| Tennis..... | 9,055 |
| Baseball (Sat., Sun. and Holidays)..... | 4,346 |
| Basketball..... | 411 |
| Hockey..... | 50 |
| Croquet..... | 30 |
| General Recreation..... | 83 |
| Sail Boats..... | 154 |
| May Parties, June Walks..... | 280 |

The attendance reports of the Bureau of Recreation show a yearly average of approximately 5,475,226.

GENERAL RECOMMENDATIONS

1. NEW PLAYGROUNDS

Owing to the great number of street accidents it is recommended that additional playgrounds be provided next year and that they be under the jurisdiction of the Bureau of Recreation, Department of Parks, as this is the only Department that has conducted all-year, all-day playgrounds for the past twenty-five years.

Last year there were 325 children killed on the streets of New York, and 1,346 children injured as a result of street accidents. Additional playgrounds could be placed in any of the following locations to great advantage:

Monroe and Gouverneur Streets
Monroe Street—between Catherine and Market Streets
Monroe Street—between Jefferson and Rutgers Street
Monroe Street—between Clinton and Jefferson Streets.
Rivington Street—between Sheriff and Willett Streets
Rivington Street—between Columbia and Sheriff Streets
Rivington Street—between Norfolk and Essex Street
Area bounded by Rivington Street and E. 3rd Street.
Sullivan Street—between Prince and Spring Streets
Thompson Street.
102nd, 103rd, 104th Streets—between Park and Madison Avenues.
Area—1st to Third Avenues, 109th, 114th Streets.
134th Street—between Lenox and Seventh Avenues
132nd Street—between Lenox and 5th Avenues
133rd Street—between Lenox and 5th Avenue.
West 45th Street, 9th Avenue. 49th Street, 9th and 10th Avenues.
88 Street, between 2nd and 3rd Avenues.

2. WAYS AND MEANS OF ELIMINATING ACCIDENTS WITHIN THE PLAYGROUNDS

A daily inspection of all units of equipment is made by the Playground Director. An inspection is made by one of the master mechanics and a Playground Director four times a year.

We have found that many accidents occur in connection with the use of large swing frames and as an experiment we have placed a fence in front of the swings at one of our playgrounds. This has proven very satisfactory and should be extended to the other playgrounds.

3. SHADE

Shade is a very important consideration in the park playgrounds where there is not a sufficient number of trees.

Awnings should be placed over all swing frames wherever possible. It is expected that by the year 1929 at least one playground will be equipped with awnings over all swing structures.



WADING POOL, HAMILTON FISH PARK PLAYGROUND

4. WADING POOLS

Wading pools are most popular and beneficial to the children from a health standpoint. We have wading pools at

Tompkins Square
Hamilton Fish
Cherry and Market Streets
Heckscher Playground, Central Park.

Every playground should have a wading pool and where the area is not sufficient one large shower would help to cool the children on a hot day.

5. SURFACING OF PLAYGROUNDS

Many of our playgrounds need re-surfacing and should be raked daily by the laborer and kept clear of stones. An application of calcium chloride should be made twice each year to keep down the dust.

6. INCREASE SALARY OF PLAYGROUND DIRECTORS

Practically all of the permanent Playground Directors of the Bureau of Recreation have been in the city service for the past 15 years and have rendered excellent service. With the exception of one general increase nine years ago, they have not received any increase in salary. These Playground Directors are well educated and trained and should receive the maximum salary as scheduled by the Park Board, viz., \$2,150 per annum. Had these persons left the playground system and entered the Board of Education which they could have done many years ago, they would now be receiving a salary of at least \$3,000 per annum.

Playground Directors recently assigned realize this fact and do not intend to make this their life work. As a result, the playgrounds suffer. It is only by giving a Playground Director an adequate salary that good work can be obtained and efficient Playground Directors kept in the service.

7. ADDITIONAL PLAYGROUND DIRECTORS

At least 11 men and 35 women should be assigned for duty in addition to the present force. It is only by assigning additional Playground Directors that we will be able to have our facilities open for maximum use. The children enjoy the activities and should be able to play safely in the playgrounds. If we do not have adequate supervision there is always the hazard of serious accidents happening.

8. MILK BOOTHS

Concessionaires should not be given permits to sell candy and soda water on or near our playgrounds. It is much better to establish a milk booth and sell milk and crackers. An experiment will be made in 1929 along these lines.

9. SKATING RINKS

A Skating Rink and Refrigerating Plant should be established on the ball field of Central Park. This area would then get maximum use not only as a skating rink in the winter, but also as a wading pool for children. A rink could be established similar to the one at Madison Square Garden with a roof and open sides. The cost of such a rink would be approximately \$250,000.

IMPROVEMENTS ACCOMPLISHED

TENNIS COURTS—Central Park. After many unsuccessful efforts to obtain an appropriation for the improvement of the Tennis Courts in Central Park, we were able, in 1926, to have backstops erected. This was made possible through the cooperation of the Municipal Tennis Committee with the City authorities.

Mr. Fred W. Gwynne was successful in raising sufficient funds for backstops and the mechanics of this Department cooperated in their erection.

It was important, however, to make further improvements. One of these was to have the Courts comply with the standard Tennis Courts regulations by running them north and south. It was also necessary to re-grade and re-surface them and install a water system. This was done.

An appropriation of \$20,000.00 was obtained in 1928 to accomplish this. At the present time the work is in progress to make the Tennis Courts at Central Park the finest courts in the United States. Additional Tennis Courts will be provided, making a total of 30 Tennis Courts in Central Park.

A Field House with lockers and showers is greatly needed at the tennis courts. In 1927 the city administration appropriated \$84,000.00 to meet this need. Plans have been drawn and approved by the Art Commission and it is expected that this Field House and improvement will be completed during the coming year.

The number of people who used the tennis courts on Saturdays and Sundays was 1200; approximately 5,000 different persons use these courts each week.

COLUMBUS PARK PLAYGROUND—Last year this Department installed a playground at Columbus Park, Baxter and Worth Streets. A field house was provided in addition to units of equipment, such as swings, see saws and slides. The daily attendance at this playground is 500.

JAY HOOD WRIGHT PLAYGROUND—As a result of the many requests to locate a playground at Jay Hood Wright Park, many units of play equipment were located there last year. Two Playground Directors were assigned during the months of July, August and September. At the present time part of this area is being graded to increase the play space for the children.

MARKET STREET PIER—East River. This Pier was not opened for re-

creational purposes during 1926 and 1927, owing to the fact that it had been condemned by the Engineers of the Department of Docks. An appropriation was obtained by that Department and these improvements were accomplished. The pier was again opened for recreational purposes during the summer of 1928. During the day this pier was used by mothers and children and during the evening band concerts were provided. Eight dances were held on the pier during the summer season. Cooperation was also obtained from the local neighborhood agencies.

HAMILTON FISH PARK—Fencing. There was a great need for erecting a fence around the ball field at Hamilton Fish Park in order to prevent property damage and injury to persons from baseball playing. An appropriation of \$2,000 was obtained to erect a wire mesh fence and this improvement has eliminated all complaints from the immediate neighborhood.

HUDSON PARK PLAYGROUND—In 1926 the first handball court was constructed at Hudson Park. This proved so popular that in 1928 an additional handball court was provided.

CHELSEA PARK PLAYGROUND—Handball also proved so popular at Chelsea Park that an additional court was constructed.

HAMILTON FISH PARK—The success of the wading pools at Tompkins Square and at Heckscher Playground, Central Park, brought out the value and importance of establishing wading pools in some of the other parks, especially in the congested neighborhoods. An appropriation of \$12,000 was allowed for the establishment of a wading pool on the large plaza at Hamilton Fish Park. This wading pool was planned by the Engineers of this Department so that it could be used for other purposes. During the summer months when not used as a wading pool it will provide a large area where the people of the neighborhood may congregate and listen to the band concerts.

IMPROVEMENTS PENDING

CARL SCHURZ PARK PLAYGROUND—Because of the large attendance at Carl Schurz Park Playground, it was necessary to recommend that the playground be enlarged and a field house provided. An appropriation of \$23,000 was obtained and the contract awarded. It is expected that this improvement will take place some time during the coming summer.

MARKET AND HENRY STREET—At Market and Henry Streets there is located a small triangle which is under the jurisdiction of the Department of Parks. During the summer months a temporary playground was located at this place and swings were erected for the smaller children. During the summer it is expected to fence this area and erect awnings over the baby swing frames.

PROPOSED CAMP AT BEAR MOUNTAIN—No approval has, as yet, been received for the proposed camp for playground children at Bear Mountain. This camp would be operated and controlled by the Department of Parks. Supervision would be provided and the camp run on a cost basis. The children would only have to pay the amount necessary for food and transportation which would amount to between four and five dollars per week.

ADMINISTRATION

SUPERVISOR OF RECREATION

| | |
|---|--|
| ASSISTANT SUPERVISOR—Male FIELD STAFF—Male 3 PLAYGROUND DIRECTOR—Male 21 Temporary—Summer Season PLAYGROUND DIRECTOR—Male 84 | ASSISTANT SUPERVISOR—Female FIELD STAFF—Female PLAYGROUND DIRECTOR—Female 26 Temporary—Summer Season PLAYGROUND DIRECTOR—Female 85 |
|---|--|

FINANCIAL STATEMENT

| | |
|--------------------------------|--------------|
| Salaries—Permanent Force | \$83,703.00 |
| Salaries—Temporary Force | 41,760.00 |
| Recreational Equipment | 10,000.00 |
| Recreational Supplies | 500.00 |
| Medical Supplies | 125.00 |
| Total appropriation | \$136,088.00 |

PARK PLAYGROUNDS, GYMNASIUMS AND RECREATION PIERS LOCATIONS—AREA AND ATTENDANCE DURING JANUARY, JULY AND AUGUST, 1928

| <i>Playground</i> | <i>Acreage</i> | <i>Jan.</i> | <i>July</i> | <i>Aug.</i> |
|---|----------------|-------------|-------------|-------------|
| Battery—State St. & Battery Pl. | 0.850 | | 18,500 | 28,000 |
| *Carl Schurz—86th St. & E. River | 0.250 | 9,500 | 19,525 | 31,985 |
| *Carmansville—152nd Street & Amst Ave. | 0.142 | 11,150 | 43,150 | 52,700 |
| *Chelsea—28th St. & 9th Ave. | 3.103 | 18,400 | 53,200 | 60,650 |
| *Coleman—Market and Cherry Sts. | 0.392 | 5,925 | 39,800 | 28,000 |
| *Colonial—150th St. & Bradhurst Ave. | 1.11 | 3,715 | 9,275 | 15,165 |
| *Columbus—Baxter and Worth Sts. | 2.568 | 6,550 | 4,225 | 22,735 |
| *Corlears Hook—Corlears Hook & Jackson St. | 0.500 | 11,120 | 27,920 | 31,840 |
| *De Witt Clinton—54th St. & 11th Ave. | 8.455 | 11,220 | 35,250 | 47,150 |
| *Downing Street—Near Bleecker Street. | 0.173 | 11,150 | 24,600 | 29,075 |
| *East 17th Street—Near East River. | 1.037 | 6,000 | 8,000 | 14,150 |
| Ft. Washington Pl.—175th St. (closed) | 2. | 2,335 | 26,945 | 33,290 |
| *Hamilton Fish—Houston and Pitt Sts. | 3.160 | 32,125 | 70,720 | 93,100 |
| *Hamilton Place—140th St. & Hamilton Pl. | 0.811 | 6,410 | 8,525 | 15,875 |
| *Heckscher—64th St. Central Park. | 7. | 32,600 | 280,000 | 280,000 |
| Highbridge—169th St. & Amsterdam Ave. | 1. | | 10,900 | 17,960 |
| Highbridge—177th St. & Amsterdam Ave. | 0.500 | | 7,150 | 17,700 |
| *Hudson—Clarkson and Hudson Sts. | 1.665 | 33,600 | 33,600 | 62,820 |
| *Jasper Oval—137th Street & Convent Ave. | 4.379 | 4,600 | 25,300 | 16,650 |
| Isham—Isham St. & Seaman Ave. | .333 | | 6,210 | 11,450 |
| John Jay—77th St. & E. River. | 3.009 | 15,300 | 16,845 | 39,699 |
| Morningside—114th Street. | 0.250 | | 17,650 | 16,275 |
| Morningside—123rd Street. | 0.250 | | 8,415 | 14,985 |
| *Mt. Morris—120th St. & Madison Ave. | 1.10 | | 40,900 | 68,225 |
| Queensboro—Foot of E. 59th St. | 1.329 | | 11,770 | 14,400 |
| Riverside—75th Street & Riverside Drive. | .2 | | 4,400 | 11,000 |
| Riverside—96th Street & Riverside Drive. | 1. | | 8,499 | 20,330 |
| *Seward—Canal and Jefferson Streets. | 3.301 | 34,645 | 38,520 | 45,645 |
| *St. Catherine's—67th St. & 1st Ave. | 0.142 | 8,400 | 27,595 | 33,965 |

| | | | | |
|---|--------|--------|---------|--------|
| *St. Gabriel's—35th St. & 2nd Ave..... | 2.924 | 7,575 | 16,660 | 17,400 |
| *St. Nicholas—140th St. & St. Nicholas Ave..... | 0.250 | | 2,532 | 12,485 |
| *Thos. Jefferson—112th St. and E. River..... | 4.120 | 14,925 | 39,725 | 47,300 |
| *Tompkins Square—10th St. & Ave. "A"..... | 1.250 | 57,200 | 107,700 | 89,640 |
| *Watergate—135th St. & Amsterdam Ave..... | 1.670 | 2,440 | 7,815 | 8,075 |
| *West 59th Street—Near 11th Ave..... | 0.579 | 3,200 | 22,470 | 33,975 |
| *Yorkville—101st Street & First Ave..... | 0.846 | 9,450 | 24,900 | 33,400 |
| 189th St. & Amsterdam Ave..... | .25 | | 7,475 | 13,820 |
| Tennis Courts—93rd St. (28 courts)..... | | | 37,425 | 24,450 |
| Tennis Courts—173rd St. (16 courts)..... | | | 8,935 | 81,625 |
| Cherry Hill—72nd St. Central Park (May Parties and special activities)..... | 2.7 | | 1,000 | 1,650 |
| East Green—72nd Street off 5th Ave..... | 5.23 | | 13,475 | 6,585 |
| Sheep Meadow—66th St. off West Drive..... | 21.108 | | 15,670 | 10,785 |
| Gilhooley Lawn—83rd St. off C. P. West..... | 3.3 | | 900 | 800 |
| Circle Lawn—106th Street, Central Park..... | 1.102 | | 600 | 800 |
| North Meadow—100th St. & West Drive..... | 30.459 | | 12,915 | 5,600 |

Gymnasiums

| | | Jan. | July | Aug. |
|-------------------------------------|-------|-------|-------|------|
| *Carmine Street—Near Varick St..... | 2,650 | 4,835 | 2,780 | |
| *Cherry & Oliver Streets..... | 6,740 | 4,630 | 4,020 | |
| *East 54th Street..... | 3,500 | 5,085 | 5,240 | |
| Hamilton Fish | 8,930 | 4,840 | 4,260 | |
| *Rutger Place | 7,860 | 2,355 | 2,520 | |
| *West 28th Street..... | 4,547 | 1,130 | 960 | |
| *West 59th Street..... | | 2,225 | | |
| *West 134th Street..... | 3,400 | 4,265 | 4,690 | |
| *John Jay..... | 1,115 | | | |

Recreation Piers

| | Jan. | July | Aug. |
|--------------------------------|-------|--------|--------|
| Barrow Street—North River..... | | 4,000 | 3,000 |
| East 3rd Street..... | | 12,620 | 13,950 |
| West 129th Street..... | | 10,500 | 6,000 |
| Market Street..... | | 9,600 | 5,000 |

(Approximate playground area—Borough of Manhattan 120 acres.)

BUREAU OF CHILDREN'S FARMS

| Name | Established | Area | Location |
|------------------|-------------|---------------------|------------------------|
| De Witt Clinton | 1902 | $\frac{3}{4}$ Acre | 52-54th St. 12th Ave. |
| Corlears Hook | 1913 | $\frac{3}{4}$ Acre | Jackson & Cherry Sts. |
| Thomas Jefferson | 1911 | 2 Acres | 111-114th Sts. East R. |
| Seward Park | 1927 | $\frac{1}{8}$ Acre | Canal & Jefferson Sts. |
| Chelsea Park | 1928 | $\frac{1}{16}$ Acre | 28th St. 9th Ave. |

THE COST OF MAINTENANCE AND OPERATION OF THIS BUREAU IS AS FOLLOWS

| | |
|--|-------------|
| Bureau of School Farms..... | \$10,219.26 |
| THE TOTAL ATTENDANCE OF EACH FARM—January 1 to December 31, 1928 | |
| De Witt Clinton..... | 48,819 |
| Corlears Hook..... | 40,020 |
| Thos. Jefferson..... | 52,386 |
| Seward Park | 6,000 |
| Chelsea Park | 480 |

The Bureau of Children's School Farms is under the supervision of Edward J. Miller, Head Attendant.

| Employees | Title | Salary |
|----------------------|-----------------------|---------|
| Edward J. Miller | Head Attendant | \$2,160 |
| Francis J. McCormack | School Farm Attendant | 1,478 |
| Helena Mahon | School Farm Attendant | 1,478 |
| Adele Mueger | School Farm Attendant | 1,478 |
| May H. Reilly | School Farm Attendant | 1,478 |
| Hannah Hanlon | School Farm Attendant | 1,200 |

PER DIEM EMPLOYEES—Seven—Employed from April-October, \$4.00 per day.

CROPS PRODUCED DURING 1928

The following crops were harvested and used in the homes of the children having individual plots:

| | | | |
|----------------|----------------|-------------------|--------------|
| Radishes | 23,000 Bunches | Lettuce | 21,500 Heads |
| Beets | 17,000 Bunches | Corn | 6,600 Ears |
| Carrots | 26,500 Bunches | Beans | 200 Quarts |
| Onions | 5,500 Bunches | Swiss Chard | 1,400 Plants |

The School Farm at Thomas Jefferson Park is located at Pleasant Avenue and 111th Street, adjoining the river, with a pleasant view of Wards Island and the bridge. It covers an area of more than 2 acres with beautiful flower beds, a small cottage, tool house and barn. In addition, there is a long building with many windows. This building is used throughout the entire year by the Board of Education for Open Air Classes. Two classes of anaemic children, with teachers detailed, occupy this building. All nature and physical training periods are taken in the garden, and the improvement both physically and mentally has been marked under this helpful, open-air environment, with a garden practically as a class room.

An important improvement was made to this garden in 1928. By the erection of a chain link fence, 1,372 feet in length. The erection of this fence released for other park purposes over 1,200 privet hedge plants, from 3 to 6 feet high, which were formerly used as an inadequate protection. The value of these plants more than offset the cost of the new fence.

The wooden floor of the tool-house was replaced by a more practical one of cement. An entire new roof was placed over the building. The garden and its buildings are now in a very satisfactory condition.

This garden has more than 1,000 individual plots 4x8 feet. The children attending this garden are mostly of Italian extraction. The garden was planted for its spring crop the first week of May, and the second or main planting was completed by June 27th. The crops for both plantings were abundant as the following enumeration will show. The entire garden was fertilized during the fall with eight truck loads of manure.

VEGETABLES PRODUCED FROM 900 CHILDREN'S PLOTS

| | |
|------------------|----------------|
| Radishes | 13,500 Bunches |
| Beets | 10,000 Bunches |
| Swiss Chard..... | 9,000 Plants |
| Corn | 300 Dozen |
| Lettuce | 13,000 Heads |
| Carrots | 10,000 Bunches |
| Onions | 3,000 Bunches |

CROPS PRODUCED FROM 57 OBSERVATION PLOTS

| | |
|--------------------------|------------|
| Celery | 90 Stalks |
| Parsley | 60 Bunches |
| Kale | 90 Plants |
| Squash | 4 |
| Cabbage | 30 Heads |
| Broom Corn | 48 Plants |
| Kaffir Corn | 96 Plants |
| Sorghum Corn | 72 Plants |
| Flax | 120 Plants |
| Peanuts | 20 Plants |
| Cotton | 160 Plants |
| Tobacco | 32 Plants |
| Indian Corn | 80 Plants |
| Vetch | 4 Pounds |
| Alfalfa | 18 Pounds |
| Wheat | 1 Pound |
| Rye | 1 Pound |
| Barley | 1 Pound |
| Millet | 2 Pounds |
| Okra | 1 Qt. |
| Pumpkin | 9 |
| New Zealand Spinach..... | 30 Qts. |

| | |
|---------------------|-----------|
| Castor Oil..... | 15 Plants |
| Parsnips | 30 Plants |
| Sugar Beets | 30 Plants |
| Egg Plants..... | 30 Plants |
| Peppers | 30 Plants |
| Sweet Potatoes..... | 3 Qts. |

DETAILED REPORT OF DE WITT CLINTON SCHOOL FARM

| | |
|---|--------------|
| Total Plot Attendance..... | 48,819 |
| Kindergarten Attendance..... | 10,025 |
| Visiting Class Attendance..... | 5,120 |
| Individual Gardens..... | 412 4x8' |
| Attendants detailed during the summer months..... | 4 |
| Attendants detailed per annum..... | 2 |
| Attendant in Charge of Garden..... | Adele Mueger |

De Witt Clinton School Farm is located in De Witt Clinton Park, 52nd St. 12th Ave. This garden covers an area of about $\frac{3}{4}$ of an acre. It was opened in 1902 and was the nucleus from which the other gardens branched. The children attending this garden are mostly of Irish, Polish and Swedish extraction, with a strong influx of colored children. There are 400 individual gardens 4x8 feet, which were planted for the spring crops the first week in May. The seeds for the fall crop were in the ground by the end of June.

The installation of a new steam boiler during 1927 has helped to eliminate some of the trouble of former years. Many winter activities have been discontinued due to the condition of the walls and ceiling. The general condition of the outside garden is good.

VEGETABLES PRODUCED FROM 412 CHILDREN'S PLOTS

| | |
|-------------------|---------------|
| Radishes | 5,000 Bunches |
| Beets | 4,000 Bunches |
| Carrots | 3,500 Bunches |
| Onions | 1,500 Bunches |
| Swiss Chard | 3,000 Plants |
| Corn | 150 Ears |
| Beans | 200 Qts. |

CROPS PRODUCED FROM 55 OBSERVATION PLOTS

| | |
|--------------------|-----------|
| Indian Corn | 72 Ears |
| Broom Corn..... | 48 Stalks |
| Kaffir Corn | 48 Stalks |
| Sorghum Corn | 48 Stalks |
| Cabbage | 30 Heals |
| Castor Oil | 8 Plants |
| Alfalfa | 4 Lbs. |
| Wheat | 2 Lbs. |
| Oats | 2 Lbs. |
| Millet | 2 Lbs. |
| Buckwheat | 2 Lbs. |
| Barley | 2 Lbs. |
| Vetch | 2 Lbs. |
| Kale | 30 Plants |
| Parsley | 90 Plants |
| Sugar Beets | 64 Plants |

DETAILED REPORT OF THOMAS JEFFERSON SCHOOL FARM

| | |
|---|--------------|
| Total Plot Attendance..... | 52,386 |
| Kindergarten Attendance..... | 4,156 |
| Visiting Class Attendance..... | 8,291 |
| Individual Gardens..... | 1,000 4x8' |
| Open Air Classes (2)..... | 75 children |
| Attendants Detailed during the Summer months..... | 5 |
| Attendant Per Annum..... | 1 |
| Attendant in Charge of Garden..... | Helena Mahon |

DETAILED REPORT OF DE WITT CLINTON SCHOOL FARM

| | |
|---------------------------|------------|
| Cotton | 8 Plants |
| Okra | 1 Qt. |
| Rhubarb | 32 Bunches |
| Peanuts | 20 Plants |
| Squash | 6 |
| Celery | 90 Plants |
| Tobacco | 12 Plants |
| Sweet Potatoes | 12 Plants |
| Horse Radish | 12 Plants |
| Tomatoes | 12 Plants |
| Pumpkin | 8 Plants |
| New Zealand Spinach | 4 Bus. |
| Flax | 1 Lb. |

DETAILED REPORT OF CORLEARS HOOK SCHOOL FARM

| | |
|--|---------------|
| Total Plot Attendance | 40,020 |
| Kindergarten Attendance | 2,523 |
| Visiting Class Attendance | 7,860 |
| Individual Gardens | 389 |
| Attendants Detailed during Summer months | 3 |
| Attendants Detailed per annum | 1 |
| Attendant in Charge of the Garden | May H. Reilly |

Corlears Hook School Farm is located at Jackson & Cherry Sts. This garden covers an area of $\frac{3}{4}$ of an acre and was established in 1913. The School Farm at Corlears Hook has 389 individual plots. The children attending this garden are of Jewish and Irish extraction.

This garden has two Open-Air Classes throughout the year. The fence around the garden, facing the ball field is in a very bad condition. A new retaining wall of cement is needed to replace the one of wood, which acts as a base for the fence that encloses the garden.

VEGETABLES PRODUCED FROM 300 CHILDREN'S PLOTS

| | |
|--------------------|-------------------|
| Radishes | 45,000 Bunches |
| Beets | 3,000 Bunches |
| Carrots | 3,000 Bunches |
| Onions | 1,000 Bunches |
| Swiss Chard | 2,000 Plants |
| Corn | 100 Dozen |
| Lettuce | 4,000 Heads |
| Celery | 30 Stalks |
| Parsley | 30 Bunches |
| Kale | 30 Plants |
| Broom Corn | 19 Plants |
| Kaffir Corn | 24 Plants |
| Sorghum Corn | 24 Plants |
| Squash | 4 Heads |
| Cabbage | 10 Heads |
| Flax | $\frac{1}{2}$ Lb. |
| Peanuts | 10 Plants |
| Cotton | 8 Plants |
| Tobacco | 10 Plants |
| Indian Corn | 50 Ears |
| Vetch | 1 Lb. |
| Alfalfa | 2 Lbs. |
| Wheat | 3 Lbs. |

CROPS PRODUCED FROM 27 OBSERVATION PLOTS: (CORLEARS HOOK)

| | |
|------------------|-------------------|
| Rye | 1 Lb. |
| Barley | 1 Lb. |
| Millet | $\frac{1}{2}$ Lb. |
| Okra | $\frac{1}{2}$ Qt. |
| Pumpkin | 8 Plants |
| Castor Oil | 5 Plants |

DEMONSTRATION GARDEN

The activities of the Demonstration Garden at Union Square Park, have been discontinued, owing to Subway encroachments. They have been transferred to Corlears Hook School Farm.

DETAILED REPORT OF SEWARD PARK GARDEN FARM

| | |
|-------------------------------|---------------------|
| Total Plot Attendance..... | 6,000 |
| Attendant, Summer Months..... | 1 |
| Individual Gardens..... | 100 |
| Attendant in Charge | Josephine O'Connell |

Seward Park Garden is located at East Broadway and Canal St. This School Farm was established in 1927, covering an area of $\frac{1}{8}$ acre. This area is divided into 90 individual garden plots and ten observation plots. The children attending the garden are all of Jewish extraction. It is extensively used by the Garden Club of the Hebrew Educational Alliance.

The four cold frames have been installed for early spring work. The general condition of this garden and the building is good.

VEGETABLES PRODUCED FROM 90 CHILDREN'S PLOTS

| | |
|-------------------|-------------|
| Radishes | 600 Bunches |
| Beets | 400 Bunches |
| Onions | 300 Bunches |
| Swiss Chard | 540 Plants |
| Corn | 40 Dozen |

The OBSERVATION PLOTS are similar to those of the large gardens, only smaller, owing to the limited area.

DETAILED REPORT OF CHELSEA PARK GARDEN

| | |
|-----------------------------|------------------|
| Total Plot Attendance | 480 |
| Individual Gardens | 20 |
| Attendant in Charge | Katherine Meyers |

Chelsea Garden is located at 28th St. and 9th Ave. covering an area of about 30 feet by 150 feet. The garden was established in 1928 by request of the Hudson Guild. This is the smallest garden and has about 20 individual plots. It has no building or toolhouse, adjoining Park House being used. This garden only requires the part time services of one attendant, three times a week. A large flower bed has been installed and plots arranged so as to fit into the general Park scheme. A new fence is required around the garden.

The garden was started late in the season with no fertilization. It was planted with only a few quick growing vegetables such as radishes and beets.

The garden has been fertilized with two loads of manure and is ready for spring planting in 1929.

THE SOCIOLOGICAL VALUE OF CHILDREN'S GARDENS

The name "Garden" conveys a different meaning to every mind. The usual conception is a place in which to grow vegetables to supply the household, or flowers to gratify the eye, or beautify the landscape. But a garden as a laboratory for every part of the school curriculum, or a sanatorium for the restoration of health and exhausted nerves, is just beginning to be understood. The Children's Gardens as conducted by the Department of Parks, with their individual plots and neat little homelike cottages attached to each garden are a sort of hypothesis of home life's problems and farming carried on in the spirit of play.

ACTIVITIES

The season is divided into two sessions: First, planting in May, harvesting in July. Second, planting before August 1st, harvesting on October 15th.

MEMBERSHIP RULES

The rules of the garden are: Honesty, truthfulness, justice and courtesy.

MANAGEMENT AND METHODS

The systematic method of assigning and planting which has been in practice for twenty-five years has made it possible for the children to do more, and more thorough work in preparing the ground under the expert supervision of the Bureau's Force. All the garden work is done entirely by the children. This work includes the preparation of the soil in the spring, spading, raking, planting, cultivating, and for the harvesting season, the preparing and manuring of the ground.

ASSIGNMENT OF PLOTS

Cooperation with the Public, Parochial and Industrial Schools from which children come in classes on a regular schedule from April to June 30th, and from September to December. Upon entering the garden, slips are distributed, giving the procedure for the day, which is governed by weather conditions. During the vacation months the attendance is voluntary, "first come, first served." A bulletin posted in the garden notifies the children of the time for registration. Different days are reserved for boys and girls. Tags bearing their names and plot numbers are given to the children at registration.

PLANTING

Immediately following the registration, School Farm Attendants take groups of children to the lesson plot, where a model planting lesson is given. Seeds of seven different vegetables are distributed and sown, the furrows covered, and the little plots watered. This operation is continued until the entire garden is planted, which is accomplished by this method in a very short time. After the individual work is finished, other public or special work is assigned to the children.

OBSERVATION PLOTS

Decorative flower beds are included in the Farm Gardens, consisting of flowers and bedding plants. These are set out with careful arrangement of attractive colors. Other beds are set aside for observation and study. These are planted with Cotton, Tobacco, Wheat, Broom Corn, Flax, Hemp, etc. Such observation plots are usually located near the edge of the School Farm with descriptive signs turned outward to interest the adults of the neighborhood. The local schools are deeply interested in these observation plots.



SCHOOL FARM EXHIBIT
WINS FIRST PRIZE AT ANNUAL CHILDREN'S FAIR
HELD AT MUSEUM OF NATURAL HISTORY, OCTOBER 1928

RAKING AND CARING FOR PATHS

The care of paths, if properly taught, can be the foundation of good road-making on a larger scale. Each individual plot owner is expected to care for the narrow paths surrounding his plot, but all of the individual plot owners must give their services towards keeping the wide paths of the garden in order. This teaches the child plot-owner the duty of good citizenship and public service. In keeping up to a standard his own property and the property of the community, he acts like a taxpayer in the City or County, who must give money or his services in keeping the community streets in order.

COURTESY EXTENDED

The courtesy of the garden is extended to all schools, Public, Parochial and Industrial, as well as to the exceptional child, whether he be deaf, dumb, blind or crippled, in the same manner as the courtesy extended by the Metropolitan Museum of Art and the Museum of Natural History.

VISITING CLASSES

With the cordial cooperation of the school authorities, the gardens are used as a valuable laboratory, children other than plot owners, coming in groups of four hundred an hour, three hours a day, during September and October, and here opportunity is afforded for them to see the sprouted seed, the grown plant, the raw material and the finished product of field and fibre crop.

NATURE STUDY LESSON

The nature study lessons consist of the study of insects, vegetables, flowers, field crops, seeds and plant parts.

EFFECT ON ADULTS

The influence of the gardens extends not only to the child world but to that of adults as well. Children in proper environment, orderly, happy and busy, are of constant interest and surprise to the adults who have known only opposite traits in children.

LITTLE MOTHERS AND FATHERS

The gardens furnish a wonderful relief to the "Little Mothers and Fathers." These children who have their baby brothers and sisters to care for, keep them happily amused, letting them pick up stones and sticks, or comfortably seat them in a nearby box or baby carriage, instead of carrying the babies in their arms or placing them on a hard door-step in a hot street. The Gardens, while not relieving them from duty enable the older child, at the same time to gain health, strength and pleasure.

INDIVIDUAL OWNERSHIP AND COMMUNITY RESPONSIBILITY

After the child has been given its individual plot, and impressed with the fact that he is to have no aid in caring for it from his fellow farmers, and that he is to render no aid to them in caring for theirs, unless asked to do so by the person in charge he is apt to become selfish. To counteract all this, the little farmers engage in community service. A raking drill is instituted at the close of the day, for three reasons; first, the effect upon the child of closing the day's work properly. Second, the physical effect of raking in concert, so exercising every muscle. Third, the individual duty to the community or public service.

CIVIC TRAINING

The fundamental reason for establishing these Children's Farms was to teach the private care of public property and remove the adult misunderstanding of children. Effort is also made to impress upon the children that this is the children's world. Its beauty, order and success are dependent upon them, but outside of the garden fence, is the adult world and respect must be paid to adult rights. Individual ownership in a community garden must be the keynote of all instruction.

LECTURES

In one garden there are accommodations for Lantern Slide Lectures. During the winter 800 children a week, visit this hall, where they not only attend these lectures but also repair the garden tools, mend and paint boxes and wheelbarrows.

OPEN AIR CLASSES

The courtesy of the garden is extended to the Open Air Classes of the Board of Education. The two classes from Public School No. 102 use the garden at Thomas Jefferson School Farm and the two classes from Public School No. 110 use the Corlears Hook School Farm.

These classes use the garden as their classroom for the entire year. They take part in the garden activities, and the most delicate child can plant a bulb or flower seed.

The Children's School Farms in Manhattan on December 31, 1928, closed their 27th successful year.

DEPARTMENT OF PARKS

BOROUGH OF MANHATTAN

IMPROVED PARKS—BOROUGH OF MANHATTAN

| | AREA IN ACRES |
|---|------------------|
| Abingdon Square, Eighth avenue and Hudson street..... | 0.222 |
| Ahearn Park, Grand street and East Broadway..... | 0.096 |
| Battery Park, foot of Broadway..... | 19.261 |

| | |
|---|---------|
| Beach Street Park, Beach street and West Broadway..... | 0.040 |
| Bowling Green, Broadway and Whitehall street..... | 0.526 |
| Bryant Park, Sixth avenue and Forty-second street..... | 4.631 |
| Canal Street Park, Canal and West streets..... | 0.326 |
| Central Park Fifth to Eighth avenue, Fifty-ninth to One Hundred and Tenth street..... | 840.010 |
| Chelsea Park, Twenty-seventh to Twenty-eighth street, Ninth to Tenth avenue | 3.103 |
| Christopher Street Park, Christopher and West Fourth street..... | 0.146 |
| City Hall Park, Broadway and Chambers street..... | 8.550 |
| Colonial Park, One Hundred and Forty-fifth to One Hundred and Fifty-fifth street, Bradhurst to Edgecombe avenue..... | 12.766 |
| Columbus Park, Mulberry and Bayard street..... | 2.568 |
| Cooper Park, Third avenue and Seventh street..... | 0.225 |
| Corlear's Hook Park, Corlear's and South streets..... | 7.458 |
| Dante Park, Broadway and Sixty-third street..... | 0.142 |
| Dewey Square, Triangle at Seventh avenue and One Hundred and Seventeenth street..... | 0.074 |
| DeWitt Clinton Park, Fifty-second to Fifty-fourth streets, North River..... | 8.455 |
| Donnellon Square, Triangle at St. Nicholas avenue and One Hundred and Fiftieth street..... | 0.038 |
| Duane Street Park, Duane and Hudson streets..... | 0.115 |
| Dyckman House Park, Broadway and Two Hundred and Fourth street..... | 0.316 |
| Greeley Square, Sixth avenue and Thirty-second street..... | 0.139 |
| Hamilton Fish Park, Houston and Willett streets..... | 3.610 |
| Hancock Square, St. Nicholas avenue and One Hundred and Twenty-third street..... | 0.067 |
| Harlem Lane Park, Seventh avenue and One Hundred and Fifty-third street | 1.000 |
| Herald Square, Sixth avenue and Thirty-fifth street..... | 0.042 |
| Hudson Park, Hudson and Leroy streets..... | 1.665 |
| Isham Park, Seaman avenue, Two Hundred and Fourteenth street and Broadway..... | 8.796 |
| Jackson Square, Eighth avenue and Horatio street..... | 0.226 |
| John Jay Park, Seventy-sixth to Seventy-eighth street, East River..... | 3.009 |
| Jeannette Park, Coenties slip and South street..... | 0.709 |
| Thomas Jefferson Park, One Hundred and Eleventh street, First avenue, One Hundred and Fourteenth street and Harlem river..... | 15.534 |
| Joan of Arc Park, Riverside Drive, Ninety-first to Ninety-fifth street..... | 1.578 |
| Kuyter Park, South approach Third Avenue Bridge..... | 0.298 |

IMPROVED PARKS—BOROUGH OF MANHATTAN

| | AREA IN ACRES |
|--|------------------|
| Lincoln Square, Broadway and Sixty-sixth street..... | 0.051 |
| Madison Square, Broadway and Twenty-third street..... | 6.101 |
| Manhattan Square, Central Park West, Seventy-seventh street to Eighty-first street..... | 17.582 |
| Mitchel Square, Broadway and 166th street to 168th street..... | 0.319 |
| Montefiori Park, Broadway and One Hundred and Thirty-eighth street..... | 0.340 |
| Morningside Park, One Hundred and Tenth street to One Hundred and Twenty-third street, between Columbus and Amsterdam avenues..... | 30.495 |
| Mount Morris Park, Mount Morris to Madison avenue, One Hundred and Twentieth to One Hundred and Twenty-fourth streets..... | 20.131 |
| John J. Murphy Park, bounded by Seventeenth and Eighteenth streets, Avenue C and East River..... | 1.037 |
| Park Avenue Parks, Park avenue, Thirty-fourth to 38th streets, and Fiftieth to Ninety-sixth street..... | 8.861 |
| Plaza Lafayette, Riverside Drive and West One Hundred and Eighty-first street..... | 0.092 |
| Riverside Park and Drive, North River, Seventy-second to One Hundred and Twenty-ninth street..... | 134.791 |
| Riverside Drive Extension, One Hundred and Thirty-fifth to One Hundred and Fifty-eighth street..... | 24.000 |
| Roger Morris Park, Jumel terrace, Edgecombe Road, One Hundred and Sixtieth and One Hundred and Sixty-second streets..... | 1.521 |
| Rutgers Park, Rutgers slip and South street..... | 0.453 |
| Ryan Park, Second avenue and Forty-second street..... | 0.180 |
| St. Gabriel's Park, Thirty-fifth to Thirty-sixth streets, First to Second avenues | 2,924 |

| | |
|---|--------|
| St. Nicholas Park, One Hundred and Thirtieth to One Hundred and Forty-first streets, St. Nicholas avenue to St. Nicholas terrace..... | 20.219 |
| Schiff Parkway, center of Delancey street from Bowery to Essex street..... | 0.716 |
| Carl Schurz Park, Eighty-fourth to Eighty-ninth streets, East River..... | 10.341 |
| William H. Seward Park, Canal and Jefferson streets..... | 3.301 |
| Sherman Square, Broadway and Seventieth street..... | 0.001 |
| Thomas F. Smith Park, West Twenty-third street and Eleventh avenue..... | 1.849 |
| Straus Park, Broadway and One Hundred and Sixth street..... | 0.072 |
| Stuyvesant Park, Rutherford place and Sixteenth street..... | 4.229 |
| Tompkins Square, Avenue A and Seventh street..... | 10.152 |
| Union Square, Broadway and Fourteenth street..... | 3.433 |
| Verdi Square, Triangle at Broadway and Seventy-third street..... | 0.095 |
| Washington Square, Fifth avenue and Waverly place..... | 8.626 |

IMPROVED AND UNNAMED PARKS—BOROUGH OF MANHATTAN

| | AREA IN ACRES |
|---|------------------|
| Dorrence Brook Sq., Triangle at St. Nicholas avenue and One Hundred and Thirty-seventh street | 0.038 |
| Triangle at Manhattan avenue and One Hundred and Fourteenth street..... | 0.018 |

IMPROVED AND UNNAMED PARKS—BOROUGH OF MANHATTAN

| | AREA IN ACRES |
|--|------------------|
| Parks, centre of Broadway, Sixtieth to One Hundred and Twenty-second street | 7.306 |
| Parks, center of Broadway, One Hundred and Thirty-fifth to One Hundred and Sixty-eighth street, total..... | 3.337 |
| Parks, center of Seventh avenue, One Hundred and Tenth street to Harlem River | 1.679 |
| Addition to Riverside Park, One Hundred and Twenty-second street, Riverside Drive to Claremont avenue..... | 2.043 |

UNIMPROVED PARKS—BOROUGH OF MANHATTAN

| | AREA IN ACRES |
|--|------------------|
| Fort Washington Park, Fort Washington Point, Hudson River..... | 123.850 |
| High Bridge Park, One Hundred and Fifty-fifth street to Dyckman street, west of "the Harlem River Driveway," and from One Hundred and Fifty-fifth to One Hundred and Fifty-ninth streets, east of "the Harlem River Driveway" (includes McNally Plaza, One Hundred Eighty-first street and Washington Bridge | 103.026 |
| St. Nicholas Park Extensions at One Hundred and Thirtieth street..... | 2.590 |
| Isham Park, Two Hundred and Thirteenth street and Seaman avenue to Harlem Ship canal | 9.797 |
| Park at Inwood Hill | 166.00 |
| Gorman Memorial Park, Broadway, 190th street, Wadsworth Terrace..... | 1.890 |

UNIMPROVED UNNAMED PARKS—BOROUGH OF MANHATTAN

| | AREA IN ACRES |
|---|------------------|
| Extension of Riverside Park, New York Central and Hudson River Railroad to the bulkhead line of Hudson River, Seventy-second to One Hundred and Twenty-ninth street | 48.215 |
| West of Harlem River Driveway and north of High Bridge Park..... | 50.013 |
| Extension to Corlear's Hook Park, an extension southerly to the pierhead line Park, east of Riverside Drive, about One Hundred and Ninetieth street..... | 2.343 |
| Triangle, One Hundred and Forty-third street and Hamilton place..... | 3.567 |
| Park, east of Riverside Drive, about One Hundred and Sixty-ninth to One Hundred and Seventy-seventh street | 0.001 |
| Park at Fort Washington avenue, W. 183d street and Pinehurst avenue..... | 1.494 |
| | 2.096 |

LANDS ACQUIRED FOR PLAYGROUNDS—BOROUGH OF MANHATTAN

| | AREA IN ACRES |
|--|------------------|
| J. Hood Wright Park, West 173d street, Haven avenue and Fort Washington avenue | 6.600 |

| | |
|---|-------|
| Playground, Fifty-ninth to Sixtieth streets, west of Amsterdam avenue..... | 0.579 |
| Coleman Square Playground, Numbers One Hundred and Eighty to One Hundred and Eighty-four Cherry street | 0.392 |
| Yorkville Playground, south side One Hundred and First street, between Second and Third avenues | 0.846 |
| Carmansville Playground, One Hundred and Fifty-first and One Hundred and Fifty-second streets, east of Amsterdam avenue | 0.142 |
| St. Catherine Park Playground, west of First avenue, between Sixty-seventh and Sixty-eighth streets | 1.383 |
| Jasper Oval Playground, St. Nicholas Terrace and One Hundred and Thirty-sixth street | 4.379 |
| Playground, Hamilton place and One Hundred and Forty-first street..... | 0.811 |
| Playground, Market and Henry street | 0.122 |
| Playground, Downing street to Carmine street, west of Bleecker street..... | 0.173 |

LANDS OF OTHER CITY DEPARTMENTS USED BY THE
DEPARTMENT OF PARKS AS PLAYGROUNDS

| | AREA IN ACRES |
|--|------------------|
| Queensboro Bridge Playground, west of Sutton place, Fifty-ninth to Sixtieth streets | 1.239 |
| Additional Land at Carmansville Playground, One Hundred and Fifty-second street and Amsterdam avenue | 0.432 |
| Annunciation Park, Amsterdam avenue and One Hundred and Thirty-fourth street | 1.670 |

PARKWAYS, STREETS, AVENUES, ETC., UNDER THE JURISDICTION OF
THE DEPARTMENT OF PARKS—BOROUGH OF MANHATTAN

| | LENGTH IN FEET | WIDTH IN FEET |
|---|-------------------|------------------|
| Harlem River driveway | 11,562 | 100 to 150 |
| Morningside Drive | 3,538 | 90 |
| Riverside Drive | 17,000 | 90 to 168 |
| Riverside Drive Extension, One Hundred and Thirty-fourth to One Hundred and Fifty-eighth street | 6,800 | |

FINANCIAL STATEMENT—REVENUES, 1928

| | |
|---|-------------|
| Privileges | \$85,335.66 |
| Motion Pictures | 142.00 |
| Lawn Tennis Permits | 9,055.00 |
| Inspection Fees | 46.00 |
| Damage to departmental property (Collections) | 77.14 |
| Zoological Garden Fund (Collections) | 1,224.98 |
| Interest on Bank Deposits | 88.43 |
| Deposits for tree planting | 240.00 |
| Deposits for street openings, etc. | 1,143.00 |
| Overhead Sheds | 177.00 |
| Vault Permits | 880.00 |
| Deposit of Fill | 5,000.00 |
| Still Picture Taking | 155.00 |
| Auction Sale of Scrap Iron | 222.49 |

Total Collections, year 1928

\$103,786.70

Amount remitted to Chamberlain, City of New York.....

103,786.70

DEPOSITS ON HAND

| | | |
|-----------------------------------|----------|------------|
| On Account of Employees Badges— | | |
| On Hand December 31, 1927..... | \$984.30 | |
| Receipts | 25.50 | \$1,009.80 |
| Refunds | | 15.45 |
| On Hand December 31, 1928..... | | \$994.35 |
| On Account of Attendants' Badges— | | |

| | | |
|---|---------|------------|
| On Hand December 31, 1927..... | \$64.10 | |
| On Hand December 31, 1928..... | | 64.10 |
| On Account of License Tags— | | |
| On Hand December 31, 1927..... | 290.00 | |
| On Hand December 31, 1928..... | | 290.00 |
| On Account of Foremans' Badges— | | |
| On Hand December 31, 1927..... | 44.00 | |
| Receipts | 6.25 | 50.25 |
| Refunds | | 5.00 |
| On Hand December 31, 1928..... | | 45.25 |
| Total on Deposit December 31, 1928..... | | \$1,393.70 |

BUDGET APPROPRIATIONS

| Code No. | Titles of Accounts, Appropriations for 1928 | | | | | |
|---|---|--------------|----------|----------|-------|--------------|
| DEPARTMENT OF PARKS, PARK BOARD, PERSONAL SERVICE | | | | | | |
| 1100 | Salaries, Regular Employees | 52,750.00 | | 4,666.67 | | 57,416.67 |
| 1101 | Contingencies | 225.00 | | 2,765.00 | | 2,813.69 |
| DEPARTMENT OF PARKS—MANHATTAN PERSONAL SERVICE—SALARIES, REGULAR EMPLOYEES | | | | | | |
| 1110 | Administration | 85,373.00 | 1,110.00 | 2,160.00 | | 86,089.24 |
| 1111 | Parks and Boulevards..... | 212,917.00 | | 8,961.00 | 52.80 | 204,700.00 |
| 1112 | Playgrounds and Children's School Farms | 92,975.00 | 995.00 | | 50.47 | 91,633.90 |
| 1113 | Menageries | 18,440.00 | 45.00 | | | 18,389.03 |
| 1114 | Dyckman House and Jumel Mansion... | 5,743.00 | 327.00 | | | 5,415.05 |
| 1115 | Salaries—Temporary Employees | 15,125.00 | | | | 14,890.74 |
| 1116 | Wages—Regular Employees | 3,832.50 | | | | 3,748.50 |
| WAGES—TEMPORARY EMPLOYEES | | | | | | |
| 1117 | Parks and Boulevards | 1,240,771.00 | | | | 1,196,273.22 |
| 1118 | Restoration of Parks | 18,878.50 | | | | 18,817.98 |
| 1119 | Maintenance of Riverside Drive, 158th Street to Dyckman Street..... | 20,453.00 | 1,500.00 | | | 17,780.00 |
| 1120 | Playgrounds and Children's School Farms | 45,540.00 | | | 90.00 | 45,348.00 |
| SUPPLIES | | | | | | |
| 1121 | Forage and Veterinary Supplies..... | 30,000.00 | 89.67 | | | 25,528.79 |
| 1122 | Fuel Supplies | 20,265.00 | | | | 14,972.11 |
| 1123 | Office Supplies | 2,500.00 | | | | 2,364.12 |
| 1124 | Medical and Surgical Supplies..... | 125.00 | | | | 24.00 |
| 1125 | Motor Vehicle Supplies | 7,500.00 | 250.00 | | | 4,658.21 |
| 1126 | Cleaning and Disinfecting Supplies... | 1,300.00 | | | | 920.26 |
| 1127 | Recreation Supplies | 500.00 | | | | 344.98 |
| 1128 | Botanical and Agricultural Supplies.. | 26,920.00 | | | | 23,550.21 |
| 1129 | General Plant Supplies | 9,000.00 | | | | 8,632.89 |
| EQUIPMENT | | | | | | |
| 1130 | Office Equipment | 200.00 | | | | 197.53 |
| 1131 | Motor Vehicle Equipment | 15,900.00 | 800.00 | | | 15,011.11 |
| 1132 | Recreational Equipment | 10,000.00 | | | | 7,700.69 |
| 1133 | General Plant Equipment | 18,525.00 | 466.69 | | | 15,941.36 |
| 1134 | Live Stock | 900.00 | | | | 855.05 |
| MATERIALS | | | | | | |
| 1135 | General Plant Materials | 36,000.00 | | | | 31,252.92 |
| CONTRACT OR OPEN ORDER SERVICE | | | | | | |
| 1136 | Repairs to Roadways and Pavements.. | 25,000.00 | | | | 20,367.38 |
| 1137 | Repairs to Walks | 15,000.00 | | | | 1,668.20 |
| 1138 | Other Repairs | 77,540.00 | 42.50 | 3,500.00 | | 22,588.42 |
| 1139 | Motor Vehicle Repairs | 900.00 | | | | 435.16 |
| 1140 | Shoeing and Boarding Horses, Including Veterinary Service | 1,100.00 | | | | 1,034.25 |
| 1141 | Carfare | 1,400.00 | | | | 1,243.36 |
| 1142 | Telephone Service | 2,750.00 | | | | 2,642.98 |
| 1143 | General Plant Service | 900.00 | | | | 568.25 |
| 1144 | Music | 36,768.00 | | | | 36,340.00 |
| 1145 | Contingencies | 200.00 | | | | 200.00 |
| GRANT'S TOMB | | | | | | |
| 1180 | Contract or Open Order Service..... | 7,000.00 | | | | 7,000.00 |
| NEW YORK PUBLIC LIBRARY BUILDINGS | | | | | | |
| Contract or Open Order Service | | | | | | |
| 1186 | General Maintenance | 65,000.00 | | | | 51,746.38 |
| 1187 | Special Repairs | 28,500.00 | | | | 14,364.80 |
| METROPOLITAN MUSEUM OF ART PERSONAL SERVICE | | | | | | |

| | | | | | | | |
|--|--|------------|-----------|-----------|--|------------|-----------|
| 1190 | Salaries—Regular Employees | 270,149.00 | | 22,500.00 | | 266,036.51 | 26,612.49 |
| 1191 | Salaries—Temporary Employees | 45,000.00 | | 22,000.00 | | 67,000.00 | |
| 1192 | Expenses for Other Than Personal Service | 128,650.00 | 17,000.00 | 5,500.00 | | 111,964.10 | 5,185.90 |
| NEW YORK ZOOLOGICAL SOCIETY NEW YORK AQUARIUM PERSONAL SERVICE | | | | | | | |
| 1195 | Salaries—Regular Employees | 49,748.00 | | 1,233.00 | | 46,697.74 | 4,283.26 |
| SUPPLIES | | | | | | | |
| 1196-1 | Forage and Veterinary Supplies..... | 3,750.00 | | | | 3,077.02 | 672.98 |
| 1196-2 | Fuel Supplies | 7,000.00 | 2,800.00 | | | 2,726.57 | 1,473.43 |
| 1196-3 | Office Supplies | 180.00 | | | | 114.33 | 65.67 |
| 1196-4 | Laundry, Cleaning and Disinfecting Supplies | 250.00 | | | | 154.84 | 95.16 |
| 1196-5 | Refrigerating Supplies | 200.00 | | | | 112.01 | 87.99 |
| 1196-6 | General Plant Supplies | 650.00 | | | | 299.69 | 350.31 |
| EQUIPMENT | | | | | | | |
| 1197-1 | Wearing Apparel | 300.00 | | | | 128.20 | 171.80 |
| 1197-2 | Office Equipment | 350.00 | | | | 82.62 | 267.38 |
| 1197-3 | General Plant Equipment | 1,800.00 | | 1,800.00 | | 2,844.20 | 755.80 |
| 1198 | General Plant Materials | 800.00 | | | | 593.80 | 206.20 |
| CONTRACT OR OPEN ORDER SERVICE | | | | | | | |
| 1199-1 | Repairs and Replacements | 1,200.00 | | 1,000.00 | | 325.84 | 1,874.16 |
| 1199-1A | Repairs and Replacements—On Account of Fire, Etc. | | | 20,000.00 | | 365.00 | 19,635.00 |
| 1199-2 | Telephone Service | 250.00 | | | | 176.31 | 73.69 |
| 1199-3 | Expressage and Cartage | 250.00 | | | | 199.00 | 51.00 |
| 1200 | Contingencies | 150.00 | | | | 137.77 | 12.23 |
| AMERICAN MUSEUM OF NATURAL HISTORY PERSONAL SERVICE | | | | | | | |
| 1205 | Salaries—Regular Employees | 368,220.16 | | 16,080.00 | | 352,975.24 | 31,324.92 |
| 1206 | Expenses for Other Than Personal Service | 65,796.50 | | 2,500.00 | | 65,790.14 | 2,506.36 |

SPECIAL REVENUE BOND FUND ACCOUNTS

| Code No. | Titles of Accounts | | | | | | |
|-------------|---|-----------|-----------|-------|-----------|-----------|-----------|
| RDP 24 | Making General Repairs to Gracie Mansion in Carl Schurz Park..... | 526.36 | | 26.36 | | 500.00 | |
| RDP 25 | Making Repairs to and Waterproofing the Soldiers and Sailors' Monument in Riverside Park, at 89th Street, Manhattan | 25,000.00 | | | 4,700.00 | 20,300.00 | |
| RDP 26 | Repairing and Placing in Safe Condition the Southwest and Southeast Towers of American Museum of Natural History | | 18,000.00 | | 4,950.00 | 13,050.00 | 7,616.00 |
| RDP 27 | Constructing a Wading Pool in Hamilton Fish Park | | 12,000.00 | | | 12,000.00 | 8,700.00 |
| TOTAL | | 25,526.36 | 30,000.00 | 26.36 | 10,150.00 | 43,350.00 | 16,316.00 |

CORPORATE STOCK FUND ACCOUNTS CORPORATE STOCK FUND ACCOUNTS (Continued)

| Code No. | Titles of Accounts | | | | | | |
|----------|--|-----------|--|-----------|-----------|----------|--------|
| CDP 3G | American Museum of Natural History—Construction and Equipment of Southeast Wing and Court Building | 56,487.80 | | 15,000.00 | 38,635.14 | 2,852.66 | |
| CDP 3H | American Museum of Natural History—Plumbing, Heating, Ventilating and Electric Work and Fixtures | 3,571.18 | | 2,756.18 | 815.00 | | |
| CDP 3J | American Museum of Natural History—Furniture and Equipment..... | 1,213.44 | | 989.72 | 223.72 | | |
| CDP 3L | American Museum of Natural History—Construction and Equipment of School Service Building | 7,106.11 | | 2,973.89 | 4,093.74 | 38.48 | |
| CDP 3M | American Museum of Natural History—Construction of Intercommunicating Passageways | 1,919.00 | | 1,919.00 | | | |
| CDP 3P | American Museum of Natural History—Improvement to Existing Building | 10,000.00 | | 1,047.00 | 8,773.94 | 179.06 | 169.06 |
| CDP 3Q | American Museum of Natural History—Additional Equipment for Existing Building | 14,254.26 | | 4,929.50 | 4,936.00 | 4,388.76 | 117.26 |
| CDP 3S | American Museum of Natural His- | | | | | | |

| | | | | | | | |
|----------|--|------------|------------|-----------|-----------|------------|-----------|
| | tory—General Construction Work in Existing Buildings | 6,882.92 | | 181.51 | 4,937.50 | 1,763.91 | |
| CDP 3T | American Museum of Natural History — Equipping School Service Building | | 11,211.96 | 3,787.35 | 6,081.12 | 1,343.49 | 69.70 |
| CDP 4A | Construction of an Additional Story to Aquarium Building in Battery Park | | 1,219.70 | | | 1,219.70 | |
| CDP 4B | Plumbing, Heating and Interior Equipment for Additional Story to Aquarium Building in Battery Park | | 1,313.12 | | 875.00 | 438.12 | |
| CDP 61A | Metropolitan Museum of Art—Completion and Equipment of Extension "H" | | 480.00 | | | 480.00 | 480.00 |
| CDP 63C | Metropolitan Museum of Art—Completion of South Wing (Additions "J" and "K"), Interior Construction and Finish | | 11.27 | | | 11.27 | |
| CDP 63D | Metropolitan Museum of Art—Completion of South Wing (Additions "J" and "K"), Exhibition Cases, Furniture and Equipment and the Replacement of Equipment Transferred to South Wing (Additions "J" and "K"), from Other Parts of the Museum Building | | 35.66 | | | 35.66 | |
| CDP 3-5 | Preparation of Plans and Specifications, Etc., Including Necessary Borings and Survey for New African Hall and Combined Power Plants and Service Building | | 150,000.00 | | | 150,000.00 | 20,550.00 |
| CDP 118 | Construction of One-Story and Basement Addition in Courtyard between Wings C and D; of Additional Public Toilets, and of Annex in Courtyard of Wing E and Construction of Mezzanine Floor in Basement of Wing D | | 132,000.00 | | 2,822.24 | 129,177.76 | 21,038.00 |
| CDP 119 | Metropolitan Museum of Art—Construction of Exhibition Cases, Furniture and Equipment | | 20,000.00 | | 3,886.59 | 16,113.41 | |
| CDP 120 | Metropolitan Museum of Art—Installation of Additional Storage Equipment in Basement of Wing B | | 9,000.00 | | | 9,000.00 | |
| CDP 121 | General Construction of Combined Tennis House and Comfort Station on Tennis Grounds in Central Park | | 84,000.00 | | | 84,000.00 | |
| | TOTALS | 115,706.42 | 395,000.00 | 33,584.15 | 76,126.00 | 403,996.27 | 49,084.02 |
| NDP 4C | Completion of Reconstruction of Aquarium Building, Battery Park | 1,155.54 | 1,155.54 | | | | |
| NDP 39G2 | Repaving Walks in Central and City Parks | 125.86 | 125.86 | | | | |
| NDP 39G3 | Paving and Repaving Walks in City Parks | 7,287.88 | 920.97 | | 6,366.91 | | |
| NDP 39M | Construction of Driveway in Central Park, from where 6th Avenue now ends at 59th Street to Existing Centrally located Park Drive | 15.09 | 15.09 | | | | |
| NDP 48D | Change in Roadway of Riverside Drive from 96th to 98th St. | 112.40 | 112.40 | | | | |
| NDP 75D | Laying New Walks, Surfacing and Sodding Lawns and Otherwise Improving Harlem River Driveway and High Bridge Park | 1,293.59 | 1,293.59 | | | | |
| NDP 75E | Improvement of High Bridge Park Playground, 170th Street and Amsterdam Ave. | 17,440.00 | 17,440.00 | 17,440.00 | | | |
| NDP 75F | Harlem River Driveway and High Bridge Park Construction of Bulkhead, Balustrade, Walks and General Improvements | 5,776.46 | 1,281.12 | 1,281.12 | 5,499.58 | 276.88 | |
| NDP 75G | High Bridge Park—Grading, Fencing and Construction of New | | | | | | |

| | | | | | | | | |
|----------|--|------------|----------|-----------|-----------|-----------|-----------|--|
| NDP 99 | Walks and Retaining Wall | 50,000.00 | | | 2,340.00 | 47,660.00 | | |
| NDP 99A | Construction and Equipment of Two Comfort Stations, Laying of Asphalt Walks, Sewer Connection and All Work Incidental Thereto, Adjacent to the Bandstand on the Mall in Central Park | 574.56 | | 159.47 | | | 415.09 | |
| NDP 99B | Reconstructing Bridle Path in Central Park | 750.74 | | 750.74 | | | | |
| NDP 99C | Central Park, Reconstruction and Improvement of the Portion Lying Between 59th and 65th Streets | 684.01 | | 684.01 | | | | |
| NDP 102 | Completion of Quarters in Arsenal Building for Use of Park Board | 940.00 | | 105.00 | 835.00 | | | |
| NDP 102A | Developing and Improving Inwood Hill and Fort Washington Parks | 228.17 | | 228.17 | | | | |
| NDP 103 | Construction and Improvement of Fort Washington, Inwood Hill and Isham Parks | 12,157.20 | 8,556.40 | 8,556.40 | | | 1,687.30 | |
| NDP 103 | Improvement of Park located at Hamilton Place, between West 140th Street and West 141st Street, as a Model Playground .. | 649.24 | | 149.24 | 500.00 | | | |
| NDP 105 | Construction and Equipment of a Comfort Station, Washington Square Park. | 27,435.20 | 1,030.00 | 11,204.50 | 16,665.10 | 595.60 | 595.60 | |
| NDP 106 | Repaving Walks of Riverside Park, 135th to 158th Streets..... | 5,914.74 | 2,000.00 | 3,523.68 | 3,748.84 | 642.22 | | |
| NDP 106A | Rehabilitation and General Improvement of Riverside Park | 164,500.00 | | | 67,401.75 | 97,098.25 | 23,753.92 | |
| NDP 107 | Improvement of Centre Park Plots on Broadway, Between West 137th and West 138th Streets, West 147th and West 148th Streets, and West 166th and West 167th Streets | 395.15 | | 395.15 | | | | |
| NDP 107A | Improvement of Broadway Plots | 25,000.00 | | | | 25,000.00 | 14,606.50 | |
| NDP 108 | Building and Installing Permanent Benches along Riverside Drive and 135th Street and 165th St. to Dyckman Street and in Shelter House at Inspiration Point | 8,821.60 | | 7,675.85 | 1,145.75 | | | |
| NDP 108A | Furnishing and Erecting Complete, Permanent Park Benches along Riverside Drive between 161st Street and 165th Street | 3,060.00 | | | 2,649.60 | 410.40 | | |
| NDP 109 | Planting Trees in Various Parks | 481.21 | | 481.21 | | | | |
| NDP 110 | Erection and Equipment of Comfort Station in Carl Schurz Park | 559.53 | | 59.53 | 500.00 | | | |
| NDP 110A | Carl Schurz Park—Enlargement and Improvement of Playground Area, Fencing and Construction of Shelter House.... | 23,000.00 | | | 438.18 | 22,516.82 | 7,372.50 | |
| NDP 112 | Reconstructing Pavement and Cop- | | | | | | | |

| | | | | | | | | | |
|--------------|---|------------|--------------|-----------|------------|------------|------------|------------|------------|
| NDP 113 | ing Surrounding Grant's Tomb | 9,950.89 | | | 8,259.83 | 1,691.06 | | | |
| NDP 113A | Construction of Retaining Walls along Transverse Roads of Central Park | 11,367.28 | | | 8,043.13 | 3,324.15 | 3,200.00 | | |
| NDP 113B | Rehabilitation of Central Park | 9,447.32 | 871,420.00 | | 411,213.40 | 469,653.92 | 84,438.67 | | |
| NDP 113C | Removal of Dead Trees in Central Park | 3,264.20 | | | | 3,264.20 | | | |
| NDP 114 | Special Engineering and Landscaping Services to Make Complete Survey of Central Park, in Connection with its Rehabilitation | 2,000.00 | | | 350.00 | 1,650.00 | 1,650.00 | | |
| NDP 115 | Setting Back Vaults at New York Public Library, Bryant Park, in Connection with Widening of West 40th Street.... | 1,625.00 | | | 580.00 | 1,045.00 | | | |
| NDP 116 | Construction of Retaining Wall at Southerly End of Fort Washington Park, East of New York Central Railroad Right-of-Way, Harlem River Drive-way — Construction of Fence from Balustrade Wall, North to Dyckman Street.. | | 150,000.00 | 16.80 | | 3,206.29 | 146,810.51 | | |
| NDP 117 | Erection of Chain Link Fence in Queensboro Playground and in Hudson Park..... | 5,500.00 | 5,000.00 | | 3,762.88 | 1,237.12 | | | |
| NDP 118 | Construction and Equipment of Comfort Station in Colonial Park | 9,950.00 | | | 1,071.00 | 4,429.00 | | | |
| NDP 121 | Furnishing White Wood Veneer to Metropolitan Museum of Art | | | | 22.00 | 22.00 | | | |
| TOTALS | | 155,795.70 | 1,454,473.87 | 62,260.40 | 16.80 | 103.02 | 600,860.68 | 947,263.31 | 176,254.07 |

TAX NOTE FUND ACCOUNTS

| | | | | | | | | |
|--------|---|-----------|----------|-------|-----------|-----------|----------|--|
| NDP 3F | American Museum of Natural History—Improvements and Equipment | 1,616.50 | | | | 1,616.50 | 1,616.50 | |
| NDP 3R | American Museum of Natural History—Case and Plant Equipment | 19,762.15 | 5,942.79 | | 13,819.36 | | | |
| NDP 3U | American Museum of Natural History—Purchase of Folding Chairs | 3,964.10 | | | 3,964.10 | | | |
| NDP 3W | American Museum of Natural History—Furnishing Chairs and Casacas Sloth.. | | | 81.02 | 81.02 | | | |
| NDP 3X | American Museum of Natural History—Purchase of Materials (Marble Base, Glass Shelves, Silex, Wood, Magnesite, Etc.) and Carrying Cases for Lantern Slides | 1,036.35 | | | 1,008.15 | 28.20 | | |
| NDP 3Y | American Museum of Natural History—Purchase of Materials and Equipment for Completion of Existing Buildings.. | 25,000.00 | | | 9,553.40 | 15,446.60 | 7,506.48 | |
| NDP 3Z | American Museum of | | | | | | | |

| | | | | | |
|---------|--|-----------|-----------|-----------|-----------|
| | Natural History— Construction of Gal- leries for the Care of Collections | 4,600.00 | 3,071.50 | 1,528.50 | |
| NDP 3-1 | American Museum of Natural History— Construction of an Extension to Refer- ence Library | 14,000.00 | 2,594.00 | 11,406.00 | 3,761.00 |
| NDP 3-2 | American Museum of Natural History— Construction of Fire- proof Shelving in East and West Cor- ridors | 5,000.00 | 1,600.50 | 3,399.50 | 2,973.00 |
| NDP 3-3 | American Museum of Natural History— Installation of Safe- ty Lights in Museum Auditorium | 2,500.00 | 1,850.38 | 649.62 | |
| NDP 3-4 | American Museum of Natural History— Construction of Ex- hibition Cases, Fur- niture and Equip- ment | 64,600.00 | 16,426.43 | 48,173.57 | 23,092.60 |