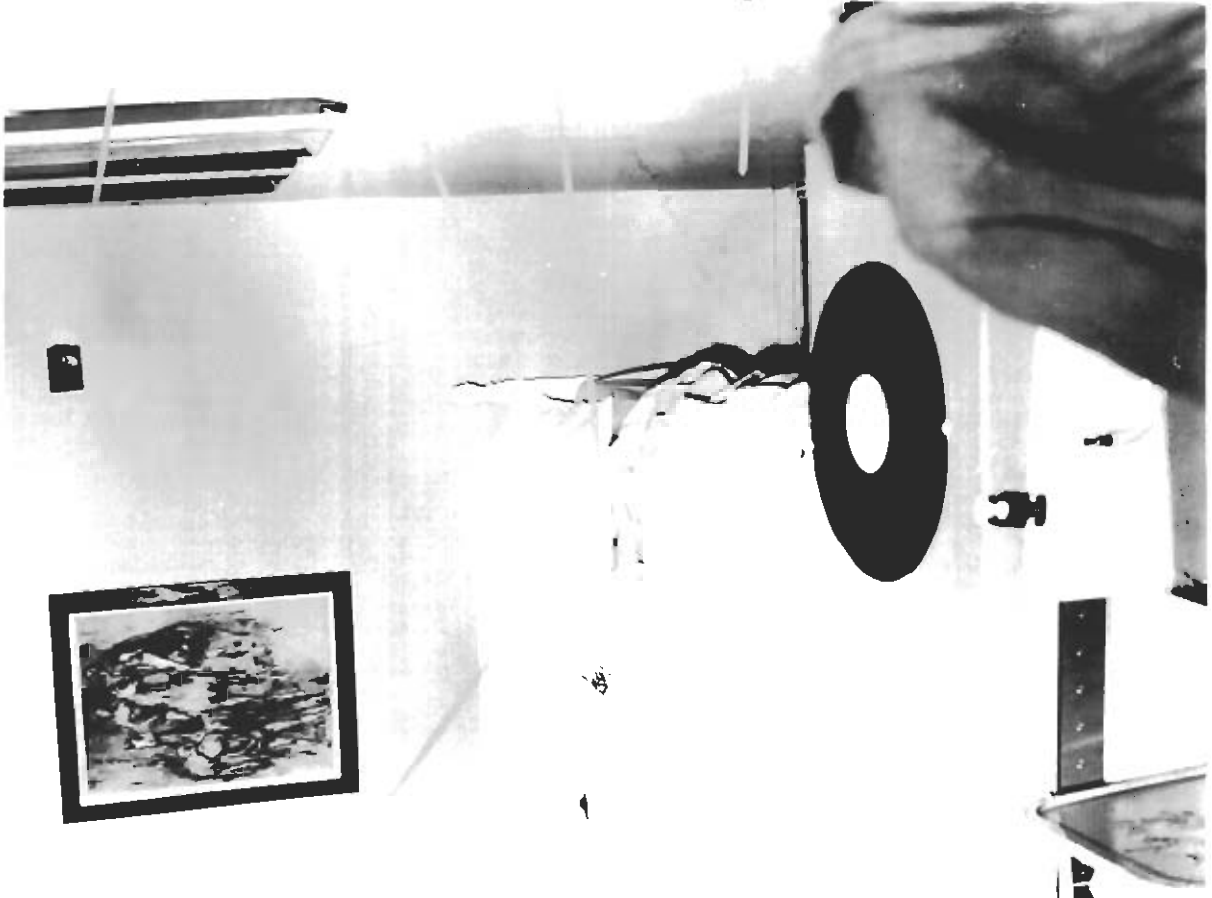


**SOUTH BEDROOM
KIMBERLY MAC DONALD
ABO GROUP AB**



EX-346 [E-118](Q-122)

SPLINTER and DEBRIS from NORTH
PILLOW, SPLINTER, BEARING HUMAN
BLOOD = EX-308 [A](Q-14)
PURPLE COTTON THREADS = PURPLE
COTTON SEAM THREADS of BLUE
PAJAMA TOP
BLUE COTTON POLYESTER = BLUE
COTTON POLYESTER of PAJAMA TOP

EX-356 [E-123](Q-86)

DEBRIS from PURPLE BEDCOVER
PURPLE COTTON THREADS = PURPLE
COTTON SEAM THREADS of
BLUE PAJAMA TOP
BLUE COTTON/POLYESTER = BLUE
COTTON/POLYESTER OF PAJAMA TOP

EX-349 [D-136]

STAINS from NORTH WALL, SOUTH
BEDROOM SEVEN FEET HIGH over BED
TYPE A, (COLETTE'S TYPE)

EX-346 [E-116](Q-121)

DEBRIS from PULLED BACK BEDDING
SPLINTER = EX-306 [A](Q-14)
PURPLE COTTON THREAD = PURPLE
COTTON SEAM THREAD of BLUE
PAJAMA TOP
BLUE COTTON POLYESTER = BLUE
COTTON POLYESTER of PAJAMA TOP

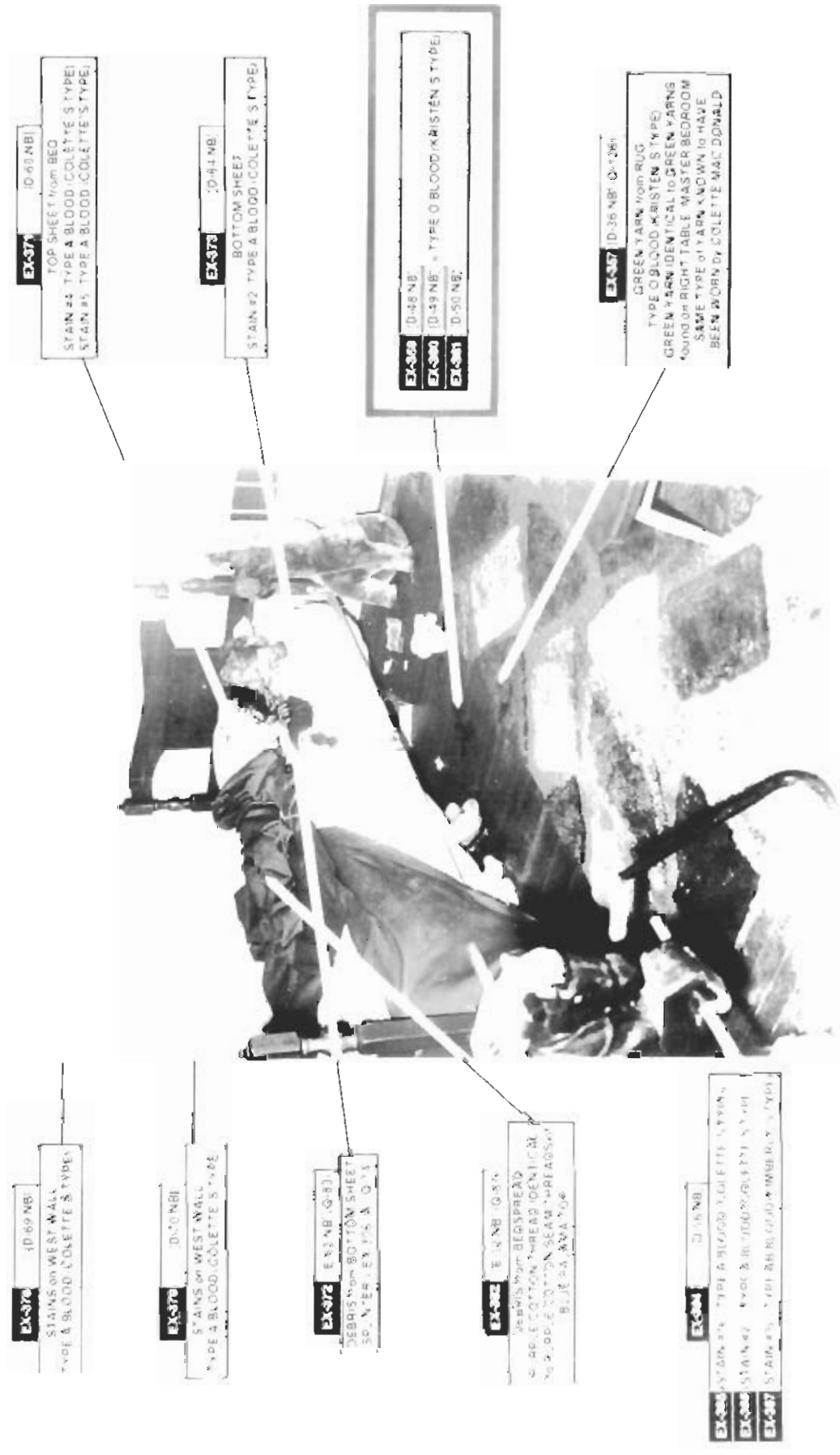
EX-347 [E-119](Q-123)

DEBRIS from BOTTOM SHEET of BED
SPLINTER = EX-306 [A](Q-14)
PURPLE COTTON THREAD = PURPLE
COTTON SEAM THREADS of
BLUE PAJAMA TOP

EX-348 [D-134]

STAINS from NORTH WALL
SOUTH BEDROOM
TYPE AB (KIMBERLY'S TYPE)

NORTHERN BEDROOM
KRISTEN MAC DONALD
ABO TYPE O



EX-370 (D-69 NB)
STAINS ON WEST WALL
TYPE A BLOOD (COLETTE'S TYPE)

EX-376 (D-70 NB)
STAINS ON WEST WALL
TYPE A BLOOD (COLETTE'S TYPE)

EX-372 (D-81 NB)
DEBRIS FROM BOTTOM SHEET
SP. NUMBER: EX-375, A, Q, 1

EX-382 (D-83 NB)
DEBRIS FROM BEDSPREAD
SINGLE COTTON THREAD IDENTICAL
TO BLOOD STAIN ON SEAM (PREVIOUSLY
BLUE 5A, 5VA, 70A)

EX-384 (D-86 NB)
STAIN #1 TYPE A BLOOD (COLETTE'S TYPE)
EX-385 STAIN #2 TYPE A BLOOD (COLETTE'S TYPE)
EX-387 STAIN #3 TYPE A BLOOD (COLETTE'S TYPE)

EX-374 (D-60 NB)
TOP SHEET FROM BED
STAIN #4 TYPE A BLOOD (COLETTE'S TYPE)
STAIN #5 TYPE A BLOOD (COLETTE'S TYPE)

EX-373 (D-64 NB)
BOTTOM SHEET
STAIN #2 TYPE A BLOOD (COLETTE'S TYPE)

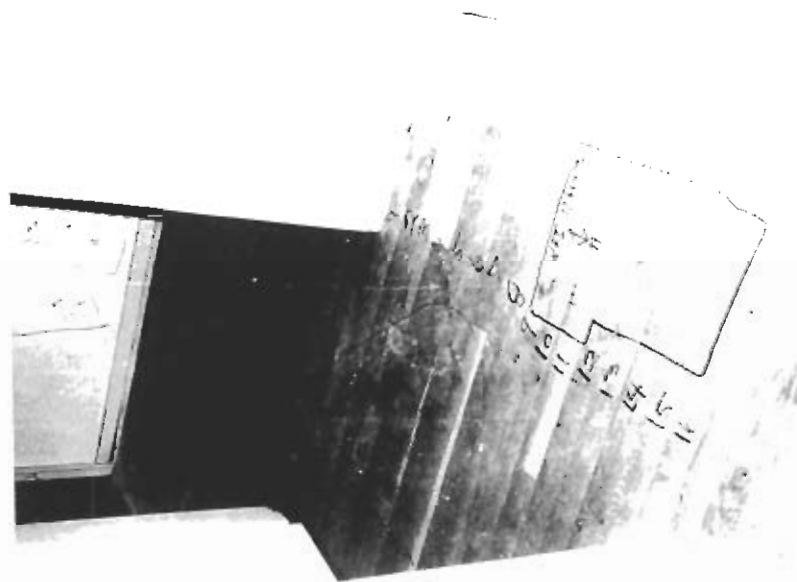
EX-368 (D-48 NB)
EX-369 (D-49 NB)
EX-381 (D-50 NB)
TYPE O BLOOD (KRISTEN'S TYPE)

EX-357 (D-36 NB) (Q-128)
GREEN YARN FROM RUG
TYPE O BLOOD (KRISTEN'S TYPE)
GREEN YARN IDENTICAL TO GREEN YARNS
FOUND ON RIGHT TABLE MASTER BEDROOM
SAME TYPE OF YARN AND WOVEN TO HAVE
BEEN WORN BY COLETTE MAC DONALD

980

EXIT TO HALL FROM KRISTEN'S ROOM

SOUTH TO KIMBERLY'S ROOM



EAST TO MASTER BEDROOM

WEST TO LIVING ROOM

EXHIBIT 301 (D-215)
EXHIBIT 303 VIAL D-215(1)

ANTIBODY	ANTIGEN
ANTIB	A
ABO GROUP A (COLETTE'S GROUP)	

PRESENCE OF AN ANTIGEN ELIMINATES KRISTEN AS A POSSIBLE SOURCE OF THIS STAIN

EX-303 (D-21b)
EX-305 VIAL D-216(1)

ANTIBODY	ANTIGEN
NO REACTION	A

PRESENCE OF AN ANTIGEN ELIMINATES KRISTEN AS A POSSIBLE SOURCE OF THE BLOOD. CONSISTENT WITH COLETTE'S TYPE A OR KIMBERLY'S AB, IF "B" ANTIGEN NOT DETECTABLE

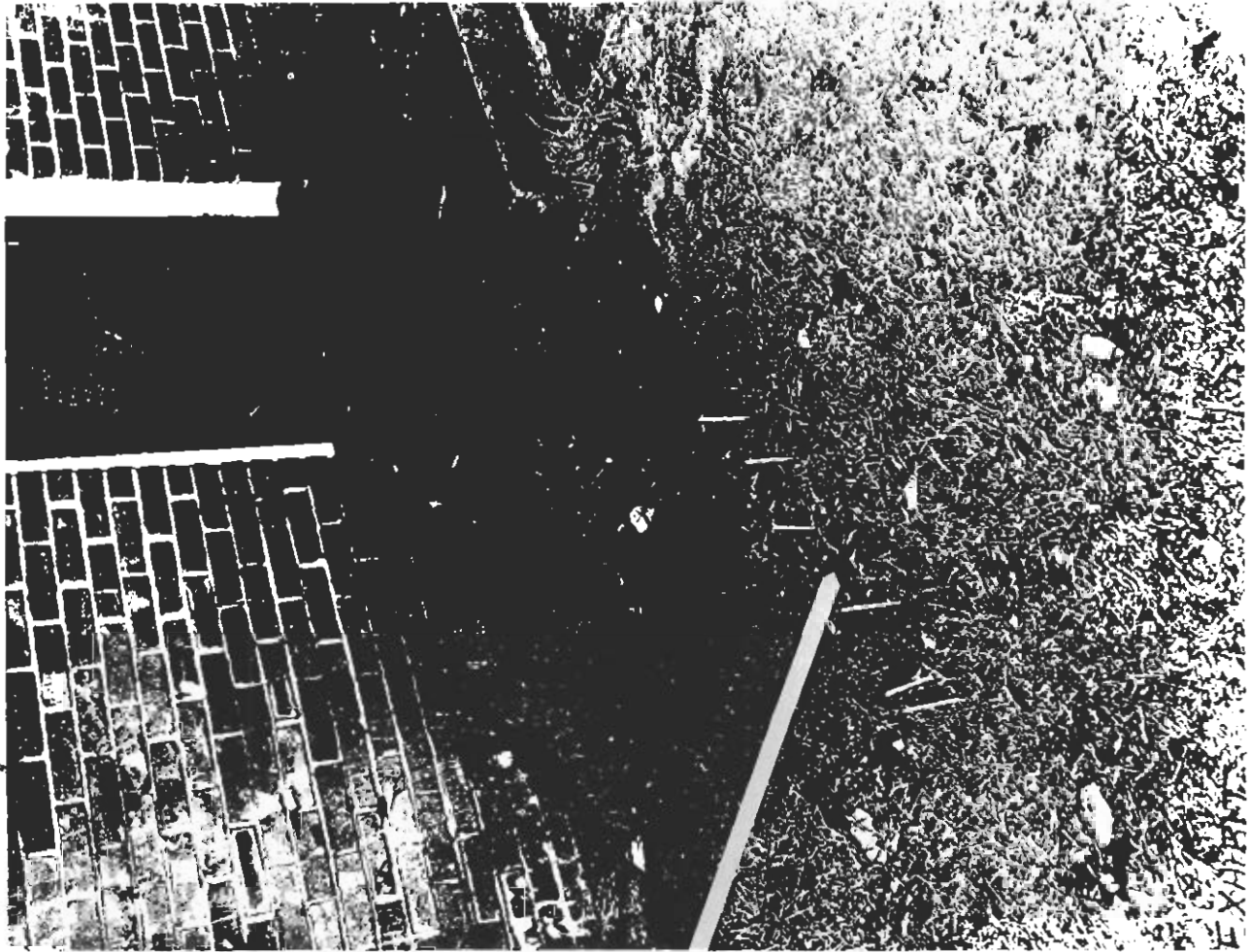
463

NORTH TO KRISTEN ABO GROUP O

KRISTEN ABO GROUP O

ANTIBODY	ANTIGEN
ANTIA & ANTIB	H

**OUTSIDE REAR OF
UTILITY ROOM**



EX-306

- PIECE OF WOOD
1. SPLINTERED
 2. TYPE A (COLETTE'S TYPE)
 3. TYPE AB (KIMBERLY'S TYPE)

EX-307

- DEBRIS REMOVED FROM CLUB
1. TWO PURPLE COTTON THREADS = PURPLE COTTON SEAM THREAD OF BLUE PAJAMA TOP FOUND ON COLETTE'S CHEST.
 2. NUMEROUS RAYON FIBERS IDENTICAL TO THOSE OF THE MULTICOLORED THROW RUG EX 322, MASTER BEDROOM.



4. AREA OF RUG BODY
OUTLINE OF COLETTE
MAC DONALD



3. COLETTE MAC DONALD,
EAST (MASTER) BEDROOM



2. Ex. 306(A)(Q-14)



1. VIEW OF UTILITY ROOM
IN APPT QUARTERS



5. CLOSE-UP OF Ex. 125 (D-23)
(Q-84) ON RUG NEAR LARGEST
BLOODSTAIN



9. SAME AS #8, DIFFERENT
CAMERA ANGLE



8. SPLINTER, Ex. 125 (D-23) (Q-84),
SHOWN FITTED INTO AREA OF
Ex. 306(A)(Q-14)



7. CLOSE-UP OF PAINT STAINED
AREA OF PIECE OF WOOD,
Ex. 306(A)(Q-14)



6. CLOSE-UP OF Ex. 125 (D-23)
(Q-84) SHOT IN FBI LAB