

902ca Pont du Gard Raglan Cardigan



Suggested yarn:

- Pierrot Yarns Pont du Gard [100% linen (cellulose); 188 yds/172m per 1.4 oz./40g skein]; color #09 mauve, 6 skeins [225g]

Tools/Notions:

- 3.0mm (US 2½) knitting needles or size necessary to achieve gauge
- 2.3mm (approx. US B) crochet hook or size necessary to achieve gauge
- 3 buttons (15mm/0.6")

Finished measurements:

- bust 93.5cm/36.8"
- center back neck-to-cuff 43cm/16.9"
- back length 48cm/18.9"

Gauge (10cm/4" square):

- stockinette stitch (knitting): 27.5 sts and 33.5 rows
- pattern stitch (crochet): 28.5 sts and 13.5 rows

Gauge may vary according to individual knitting style. Change needle size if necessary to achieve gauge. Alternatively, rework pattern with your own gauge measurements.

Summary

Body (back & front): With knitting needles, cast on with long-tail cast-on method. Work in k1p1 ribbing. Shape sides and raglan edges with fully fashioned decreases worked 1 stitch in from the edge.

Sleeve (make 2): With crochet hook, work foundation chain, then work in pattern stitch.

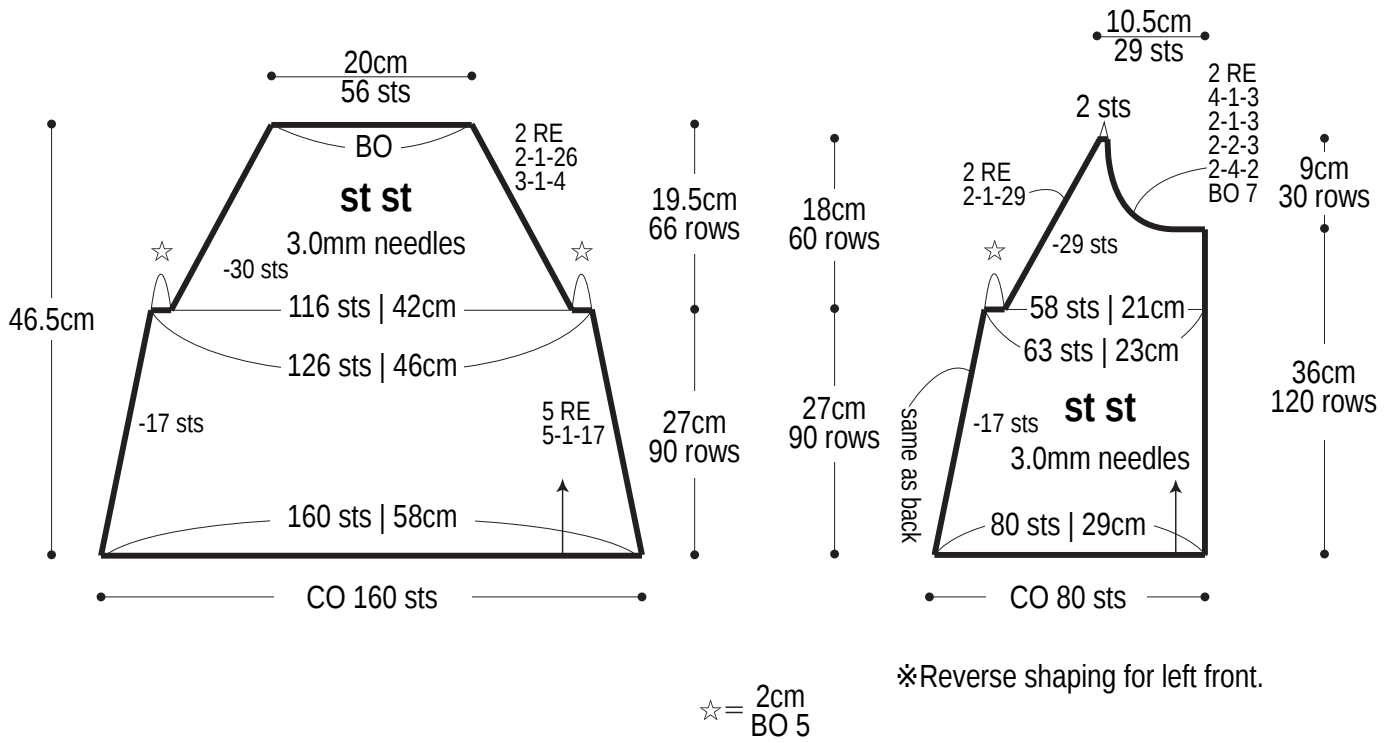
Finishing: Seam raglan edges and sides, respectively, with mattress stitch. Seam sleeves with chain seam (alternating chain st and slip st as needed to maintain pattern). Seam underarm gusset with whipstitch. Crochet edging in the round around cuffs. Crochet edging in the round along neckline, front edges, and hem, working buttonholes in right front edge only.

Abbreviations:

BO = bind off
ch = chain stitch
CO = cast on
RE = row(s) even
rep = pattern repeat(s)
st st = stockinette stitch
#-#-# = rows-stitches-times

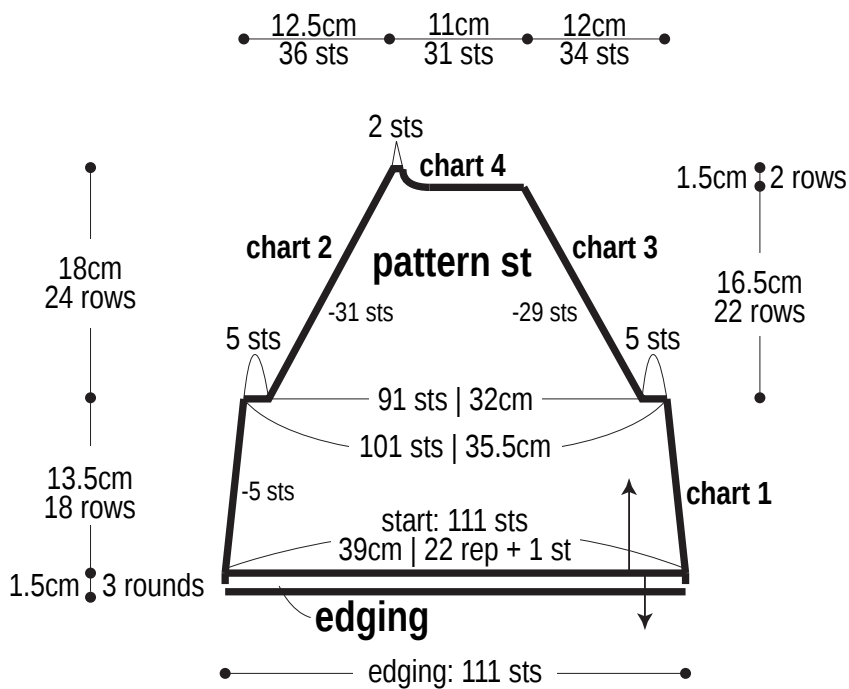
Back

Right front

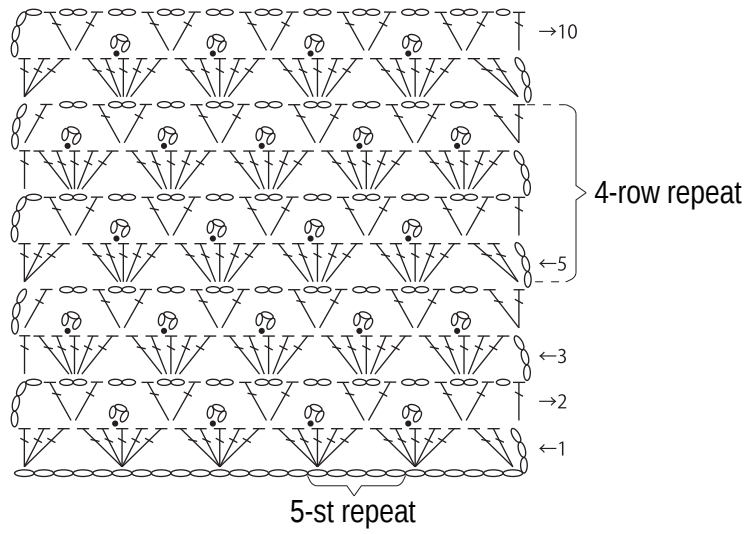


Right sleeve

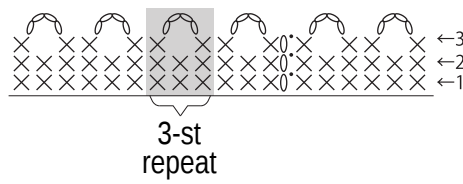
*Reverse shaping for left sleeve.



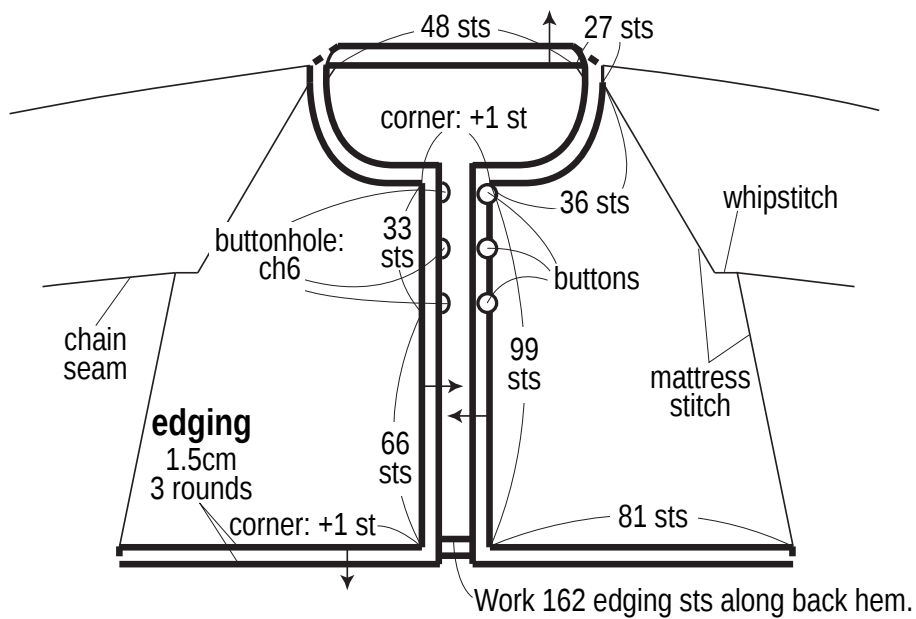
Pattern stitch 2.3mm hook



Edging 2.3mm hook

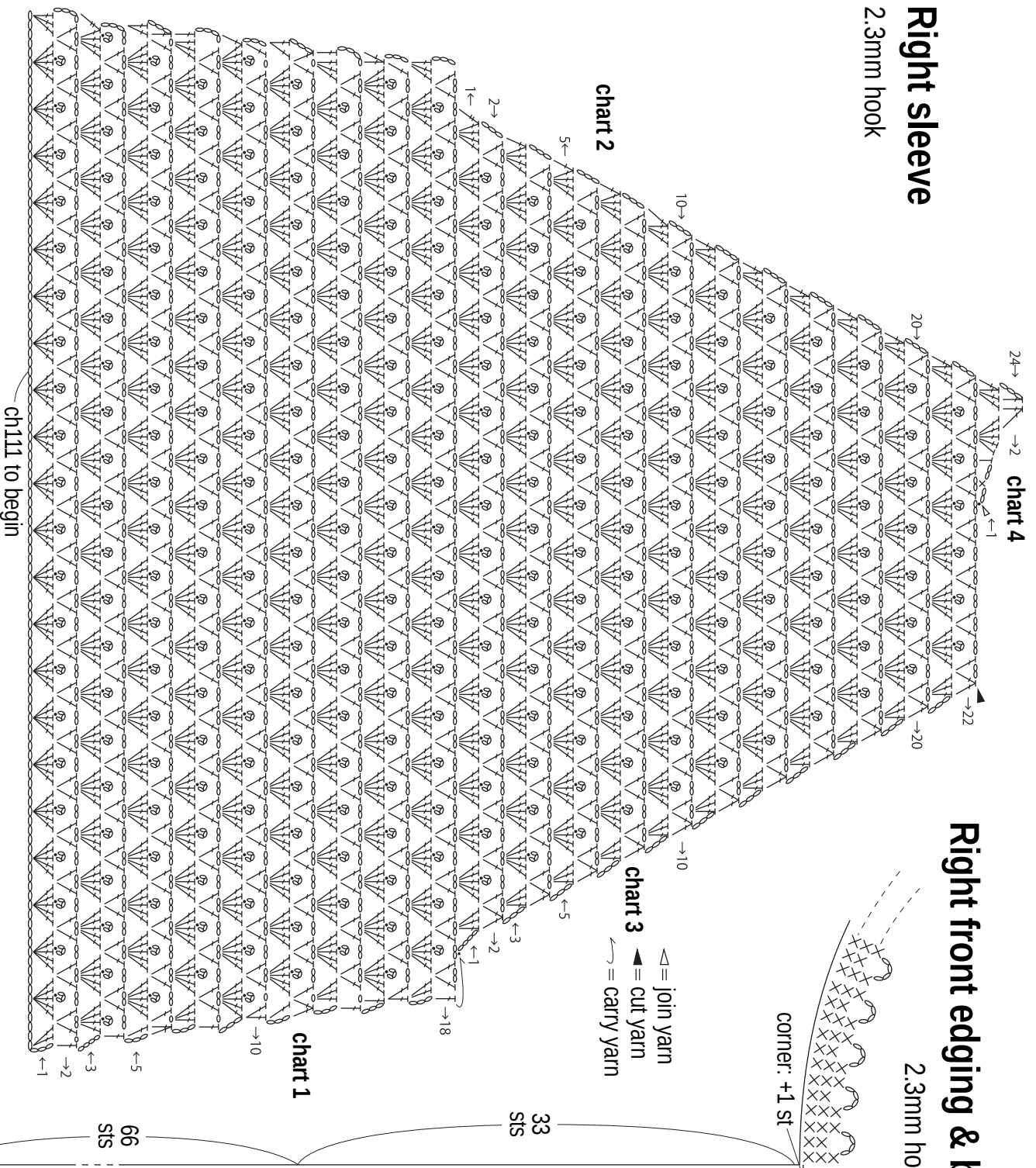


Finishing 2.3mm hook



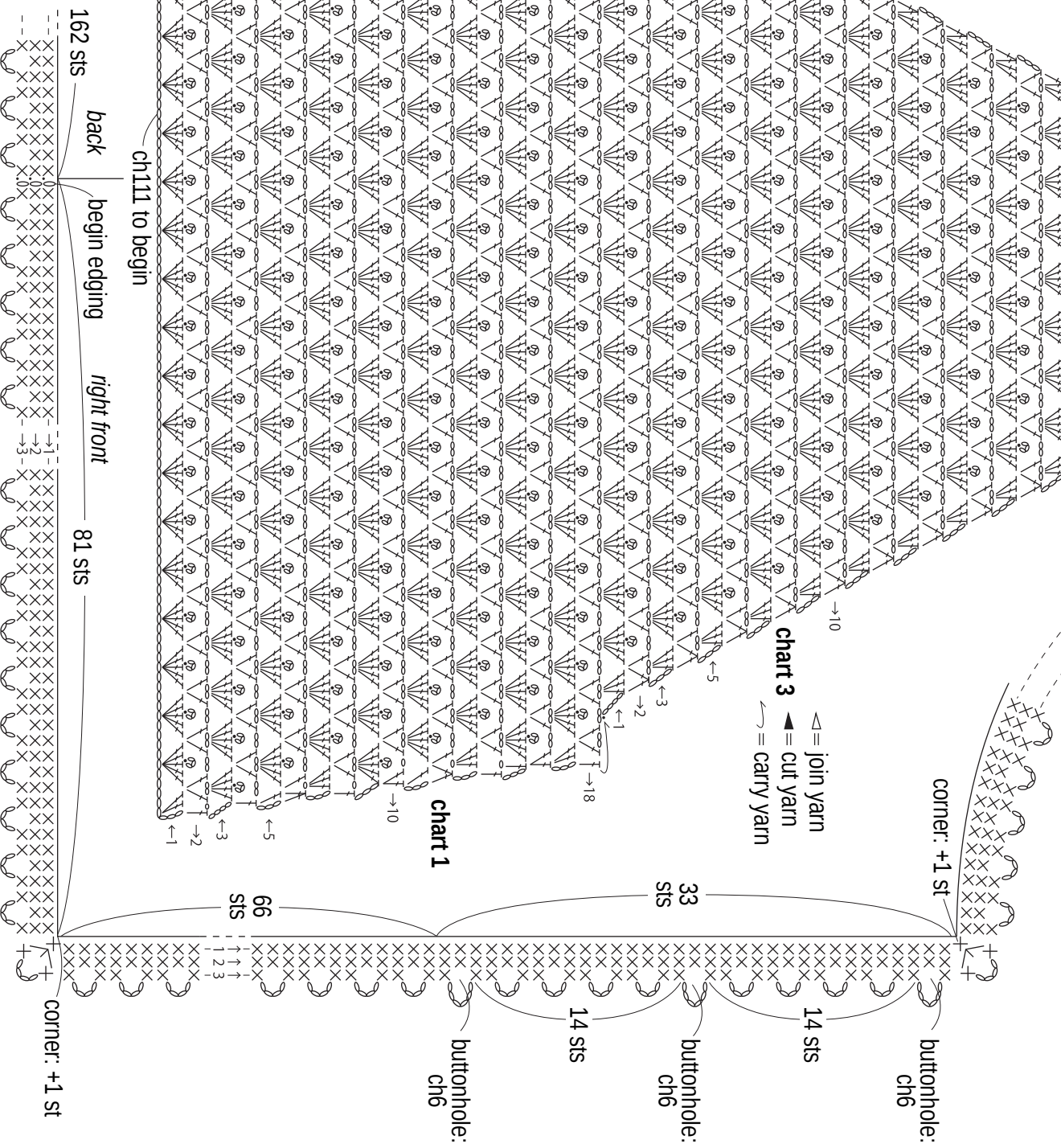
Right sleeve

2.3mm hook



Right front edging & buttonholes

2.3mm hook



◁ = join yarn
 ◀ = cut yarn
 ↶ = carry yarn