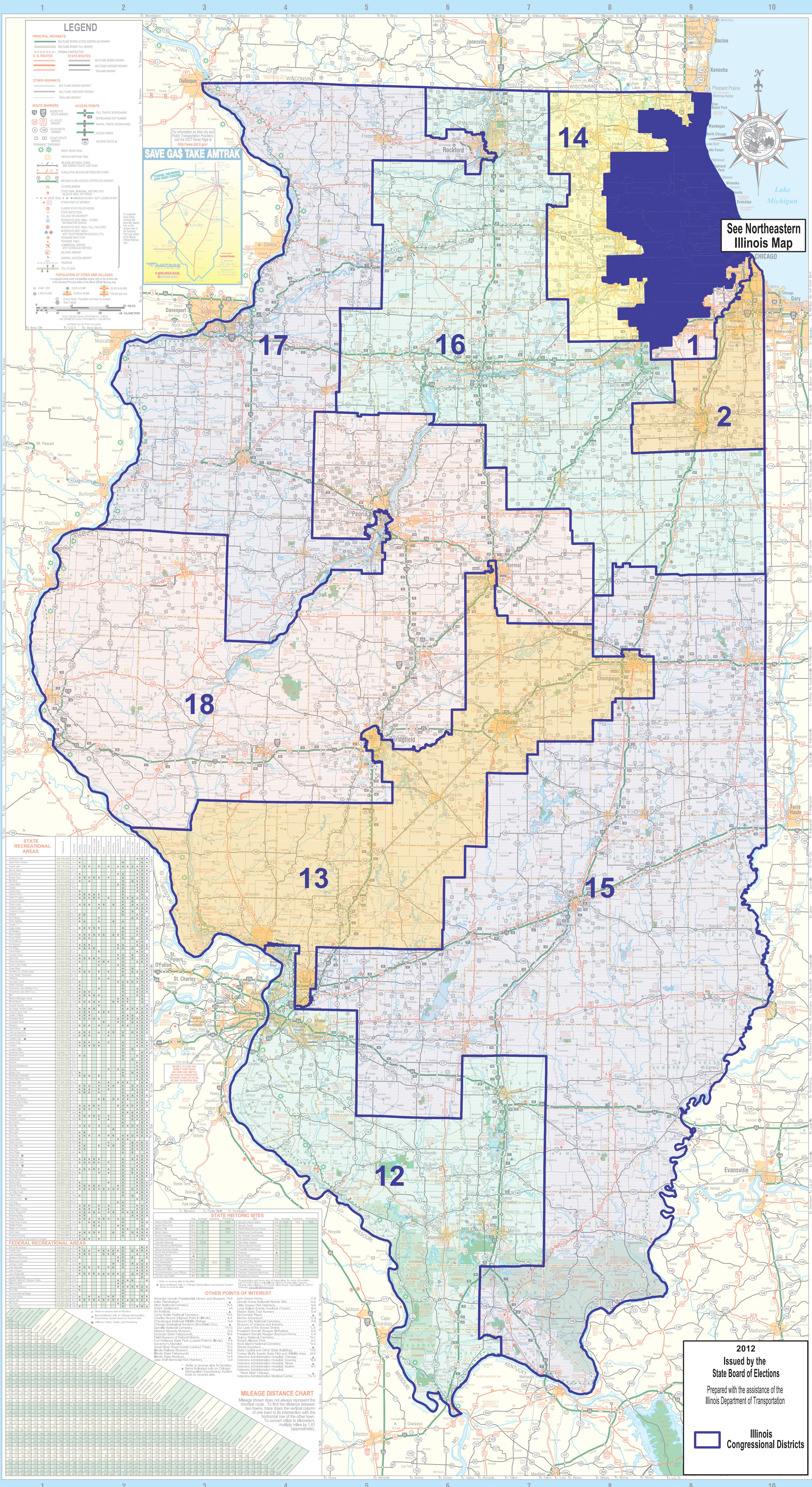


Congressional Districts of Illinois



PRINCIPAL HIGHWAYS		STATE ROUTES	
	INTERSTATE		STATE ROUTE
	U.S. ROUTE		TOLL ROAD
OTHER HIGHWAYS		ROUTE MARKERS	
	EXPRESSWAY		MILEAGE MARKER
	BYPASS		MILEAGE MARKER
	ACCESS ROAD		MILEAGE MARKER
	ACCESS POINT		MILEAGE MARKER

Area	County	Acres	Year
Akron	Akron	2,400	1910
Alton	Alton	1,500	1920
Antelope	Antelope	1,200	1930
Asheboro	Asheboro	1,100	1940
Aurora	Aurora	3,500	1950
Baldwin	Baldwin	1,800	1960
Beverly	Beverly	1,400	1970
Blackhawk	Blackhawk	1,600	1980
Carle	Carle	1,300	1990
Channahon	Channahon	1,200	2000
Cherry	Cherry	1,100	2010
Chickadee	Chickadee	1,000	2015

Site Name	County	Year
Abraham Lincoln Presidential Library and Museum	Chicago	1966
Adlai Stevenson Library	Chicago	1966
Alton National Historic Site	Alton	1933
American Revolution	Chicago	1966
Antelope National Historic Site	Antelope	1933
Asheboro National Historic Site	Asheboro	1933
Aurora National Historic Site	Aurora	1966

From	To	Miles
Chicago	Springfield	260
Chicago	St. Louis	320
Chicago	St. Paul	380
Chicago	Minneapolis	440
Chicago	St. Paul (via MN)	400
Chicago	St. Louis (via MO)	360
Chicago	St. Paul (via IA)	320
Chicago	St. Paul (via WI)	280
Chicago	St. Paul (via IL)	240

See Northeastern Illinois Map

2012
 Issued by the State Board of Elections
 Prepared with the assistance of the Illinois Department of Transportation
 Illinois Congressional Districts