



'Wesley House' is a grade II listed 'Art Deco' building built in 1935 housing Leatherheads former Council Chambers. It has a commanding position on Bull Hill within one minutes' walk of the town centre and a two minute walk to the mainline station.

'Wesley House' provides an elegant blend of modern technology, contemporary design and classic architecture making an office environment perfectly tailored to your business needs. It has an opulent entrance with large corridors and high ceilings yet retains a warm atmosphere and provides office suites suitable for two to ten people. The new and hugely impressive glass and steel West Wing is now complete providing floor to ceiling glass walled offices with plenty of natural light. 'Wesley House' also retains the original 'Council Debating Chamber' which has undergone a complete restoration programme with its imposing tiered, semi circular style seating for conferences, training and meetings.

We offer an 'All Inclusive Package' which means there will be no hidden extras. We include free meeting room time (subject to availability) and tea and coffee as well as on site parking at no extra charge.

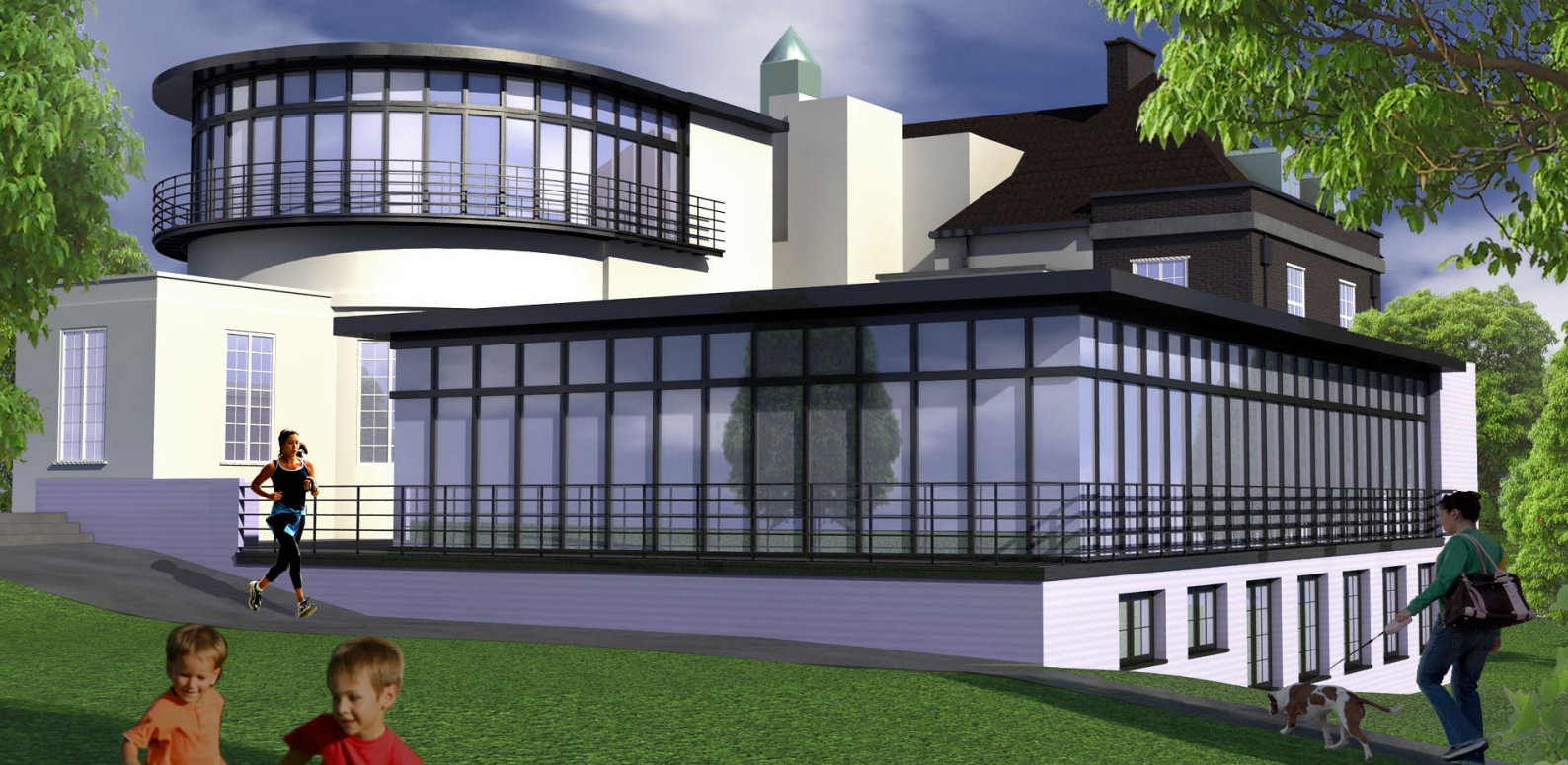
# Wesley House

- Two minute walk from the station, Waterloo and Victoria thirty minutes journey
- One mile from Junction 9 of the M25
- Superb access to Motorway network and Heathrow and Gatwick airports
- Two minute walk from the town centre with all amenities including banking, wine bars/restaurants and hotels

Leatherhead  
Surrey



High quality serviced office suites with a fully inclusive monthly fee



### Location

A few minutes walk to the town centre to access:

- All major banks
- Wine bars/Restaurants
- Hotels
- Theatre
- Private health club
- Swimming pool
- Mainline station  
(Leatherhead to Waterloo and Victoria  
30 minutes every 20 minutes)

### Fully Inclusive Facilities

- New West Wing offers fully air conditioned offices (subject to availability)
- 24 hour access
- Furnished office suites
- Car parking
- Daily office cleaning
- Personalised telephone answering
- Individual alarms
- Dedicated reception team
- ADSL (Broadband)
- DDI
- Voicemail
- Meeting rooms/Boardroom
- Auditorium
- Shower
- Kitchen facility
- Lounge area
- Catering facilities
- Postal/Frinking collection
- Touchdown facility
- Virtual office services
- On-Site management
- Refreshments

### At Cost Facilities

- Telephone calls
- Photocopying and faxing
- Postage/Frinking
- Courier service
- Catering facility
- Secretarial/Administration facility

# Wesley House

