

Repurposed antiviral drugs for COVID-19 –interim WHO SOLIDARITY trial results

WHO Solidarity trial consortium*

*A complete list of SOLIDARITY Trial investigators is provided in the Supplementary Appendix.

Hongchao Pan, Ph.D., Richard Peto, F.R.S., Quarraisha Abdool Karim, Ph.D., Marissa Alejandria M.D., M.Sc., Ana Maria Henao-Restrepo, M.D., M.Sc., César Hernández García M.D., Ph.D., Marie-Paule Kieny Ph.D., Reza Malekzadeh M.D., Srinivas Murthy M.D. C.M., Marie-Pierre Preziosi M.D., Ph.D., Srinath Reddy M.D., D.M., Mirta Roses Periago M. D., Vasee Sathiyamoorthy B.M.B.Ch., Ph.D., John-Arne Røttingen M.D., Ph.D., and Soumya Swaminathan M.D. , as the members of the Writing Committee, assume responsibility for the content and integrity of this article.

International Steering Committee *National PI; †National Coordinator; ‡Executive Group; § Discovery add-on study.

Albania: University Hospital Centre, Tirana N Como*; **National Agency for Medicines and Medical Devices** N Sinani†. **Argentina:** Fundación del Centro de Estudios Infectológicos G Lopardo*; **National Academy of Sciences of Buenos Aires** M Roses Periago†‡. **Austria:** § . **Belgium:** § . **Brazil:** Oswaldo Cruz Foundation EP Nunes*, PPS Reges†. **Canada:** University of British Columbia S Murthy*‡; **Public Health Agency of Canada** M Salvadori†. **Colombia:** National University of Colombia CA Alvarez- Moreno*; **Ministry of Health** ML Mesa Rubio†. **Egypt:** National Hepatology and Tropical Medicine Research Institute M Hassany*; **Ministry of Health and population** H Zaid†. **Finland:** Helsinki University Hospital and South Karelian Central Hospital, Lappeenranta KAO Tikkinen*; **Finnish Institute for Health and Welfare and University of Finland, Helsinki** M Perola†. **France:** Hospices Civils de Lyon, Lyon F Ader* § ; **Institut National de la Santé Et de la Recherche Médicale, Paris** MP Kieny†‡ § . **Honduras:** National Autonomous University of Honduras MT Medina*; **Secretaria de Salud de Honduras** N Cerrato†. **India:** ICMR National AIDS Research Institute, Pune S Godbole*†; **Public Health Foundation of India** KS Reddy‡. **Indonesia:** National Institute of Health Research and Development I Irmansyah*; **RSUP Persahabatan, Jakarta** MR Rasmin†. **Iran (Islamic Republic of):** Digestive Disease Research Institute, Teheran University of Medical Sciences, Tehran R Malekzadeh*†‡. **Ireland:** HRB Clinical Research Facility, University College, Cork J Eustace*; **Department of Health** T Maguire†. **Italy:** University of Verona E Tacconelli*; **Italian Medicines Agency** N Magrini†. **Kuwait:** Infectious Diseases Hospital A Alhasawi*; **Ministry of Health** A Al-Bader†. **Lebanon:** Rafic Hariri University Hospital P Abi Hanna*; **Ministry of Public Health** R Hamra†. **Luxembourg:** § . **Lithuania:** University Hospital Santaros klinikos, Vilnius L Jancoriene*, L Griskevicius†. **Malaysia:** Penang Hospital TS Chow*; **Hospital Sungai Buloh, Jalan Hospital** S Kumar†. **North Macedonia:** University Clinic of Infectious Diseases and Febrile Conditions M Stevanovikj*; **Ministry of Health** S Manevska†. **Norway:** Oslo University Hospital P Aukrust*, A Barratt-Due†; **Research Council of Norway** JA Røttingen‡. **Pakistan:** Shaikat Khanum Memorial Cancer Hospital and Research Centre M Hassan*†. **Peru:** Universidad Peruana Cayetano Heredia PJ García*, E Gotuzzo†. **Philippines:** National Institutes of Health, University of the Philippines, Manila MM Alejandria*†‡. **Saudi Arabia:** Ministry for Preventive Health AO Athari Alotaibi*, A Asiri†. **South Africa:** University of the Witwatersrand J Nel*; **Wits Reproductive Health and HIV Institute** H Rees†; **Centre for the AIDS Programme of Research In South Africa** Q Abdool Karim‡. **Spain:** Hospital Clínico San Carlos, UCM, IdISSC, Madrid A Portoles*; **Agency of Medicine and Medical Devices** C Hernández-García†‡. **Switzerland:** Lausanne University Hospital O Manuel*†.

Writing committee affiliations: Nuffield Department of Population Health, University of Oxford, Oxford (H.P. and R.P.); Centre for the AIDS Programme of Research In South Africa (CAPRISA), Durban, South Africa (Q.A.K.); National Institutes of Health, Manila, University of the Philippines, Manila (M.M.A.); Agency of Medicine and Medical Devices, Madrid, Spain (C.H.G); Institut National de la Santé Et de la Recherche Médicale (INSERM), Paris, France (M.P.K.); Ministry of Health and Medical Education, Tehran, Iran (R.M.); University of British Columbia, Vancouver, Canada (S.M); Public Health Foundation of India, New Delhi, India (K.S.R.); National Academy of Sciences of Buenos Aires, Buenos Aires, Argentina (M.R.P.); Research Council of Norway, Oslo, Norway (J-A.R.); World Health Organization, Geneva, Switzerland (A-M.H-R., M-P.P., V.S.M., S.S.).

Address correspondence and reprint requests to WHO R&D Blueprint at 20 Avenue Appia, 1211 Geneva, Switzerland or rdblueprint@who.int

ABSTRACT

BACKGROUND

WHO expert groups recommended mortality trials in hospitalized COVID-19 of four re-purposed antiviral drugs.

METHODS

Study drugs were Remdesivir, Hydroxychloroquine, Lopinavir (fixed-dose combination with Ritonavir) and Interferon- β 1a (mainly subcutaneous; initially with Lopinavir, later not). COVID-19 inpatients were randomized equally between whichever study drugs were locally available and open control (up to 5 options: 4 active and local standard-of-care). The intent-to-treat primary analyses are of in-hospital mortality in the 4 pairwise comparisons of each study drug vs its controls (concurrently allocated the same management without that drug, despite availability). Kaplan-Meier 28-day risks are unstratified; log-rank death rate ratios (RRs) are stratified for age and ventilation at entry.

RESULTS

In 405 hospitals in 30 countries 11,266 adults were randomized, with 2750 allocated Remdesivir, 954 Hydroxychloroquine, 1411 Lopinavir, 651 Interferon plus Lopinavir, 1412 only Interferon, and 4088 no study drug. Compliance was 94-96% midway through treatment, with 2-6% crossover. 1253 deaths were reported (at median day 8, IQR 4-14). Kaplan-Meier 28-day mortality was 12% (39% if already ventilated at randomization, 10% otherwise). Death rate ratios (with 95% CIs and numbers dead/randomized, each drug vs its control) were: Remdesivir RR=0.95 (0.81-1.11, p=0.50; 301/2743 active vs 303/2708 control), Hydroxychloroquine RR=1.19 (0.89-1.59, p=0.23; 104/947 vs 84/906), Lopinavir RR=1.00 (0.79-1.25, p=0.97; 148/1399 vs 146/1372) and Interferon RR=1.16 (0.96-1.39, p=0.11; 243/2050 vs 216/2050). No study drug definitely reduced mortality (in unventilated patients or any other subgroup of entry characteristics), initiation of ventilation or hospitalisation duration.

CONCLUSIONS

These Remdesivir, Hydroxychloroquine, Lopinavir and Interferon regimens appeared to have little or no effect on hospitalized COVID-19, as indicated by overall mortality, initiation of ventilation and duration of hospital stay. The mortality findings contain most of the randomized evidence on Remdesivir and Interferon, and are consistent with meta-analyses of mortality in all major trials. (Funding: WHO. Registration: ISRCTN83971151, NCT04315948)

INTRODUCTION

A WHO COVID-19 research forum in February 2020 recommended evaluation of treatments in large randomized trials,¹ and other WHO expert groups identified 4 re-purposed anti-viral drugs that might have at least a moderate effect on mortality: Remdesivir, Hydroxychloroquine, Lopinavir, and Interferon- β 1a.² In March 2020, WHO began a large, simple, multi-country, open-label randomized trial among hospital inpatients of the effects of these 4 drugs on in-hospital mortality. The trial was adaptive; unpromising drugs could be dropped and others added. Hydroxychloroquine and Lopinavir were eventually dropped, but others, such as monoclonal antibodies, will be added. We report interim mortality results for the original 4 drugs.

METHODS

The protocol³ was designed to involve hundreds of potentially over-stressed hospitals in dozens of countries. Hence, no form-filling was required, and trial procedures were minimal but rigorous. Online randomization of consented patients (via a cloud-based GCP-compliant clinical data management system) took just a few minutes, as did online reporting of death in hospital or discharge alive (plus brief details of respiratory support in hospital and use of study drugs and certain non-study drugs). No other reporting was required unless doctors suspected an unexpected serious adverse reaction (SUSAR). National and global monitors resolved queries and checked progress and data completeness. Eligible patients were age ≥ 18 years, hospitalized with a diagnosis of COVID-19, not known to have received any study drug, without anticipated transfer elsewhere within 72 hours, and, in the physician's view, with no contra-indication to any study drug. Participants were randomized in equal proportions between control and whichever other study drugs were locally available (up to 5 options: these drugs, and local standard-of-care). Placebos were not used. Study drugs were Remdesivir, Hydroxychloroquine, Lopinavir-Ritonavir and Interferon (given with Lopinavir, until July 4). Hydroxychloroquine and Lopinavir were discontinued for futility on June 18 and July 4, 2020, respectively; Interferon is ceasing on October 16.

Daily doses were those already used for other diseases, but to maximize any efficacy without undue cardiac risk Hydroxychloroquine dosage was based on that for amoebic liver abscess, rather than the lower dosage for malaria.⁴ (Hydroxychloroquine slightly prolongs QT, and unduly high or rapid dosage might cause arrhythmias or hypotension.) All treatments were stopped at discharge; otherwise, regimens were:

Remdesivir (intravenous): Day 0, 200mg; days 1-9, 100mg.

Hydroxychloroquine (oral): Hour 0, four tablets; Hour 6, four tablets; Hour 12, begin two tablets twice daily for 10 days. Each tablet contained 200mg Hydroxychloroquine sulphate (155mg base/tablet; a little-used alternative involved 155mg chloroquine base/tablet).

Lopinavir (oral): Two tablets twice daily for 14 days. Each tablet contained 200mg Lopinavir (plus 50mg Ritonavir, to slow hepatic clearance of Lopinavir). Other formulations were not provided, so ventilated patients received no study Lopinavir while unable to swallow.

Interferon (mainly subcutaneous): Three doses over six days of 44 μ g subcutaneous Interferon- β 1a; where intravenous interferon was available, patients on high-flow oxygen, ventilators or ECMO were instead to be given 10 μ g intravenously once daily for six days.

ENDPOINTS

The protocol-specified primary objective was to assess effects on in-hospital mortality (ie, mortality during the original episode of hospitalization; follow-up ceased at discharge) not only in all patients but also in those with moderate COVID and in those with severe COVID (subsequently defined as ventilated when randomized).

The protocol-specified secondary outcomes were initiation of ventilation and hospitalization duration. Although no placebos were used, appropriate analyses of these non-fatal outcomes can still be reliably informative. The CATCO add-on study in Canada and the Discovery add-on study in Europe (mostly France) recorded additional outcomes that will be reported elsewhere.

SAMPLE SIZE

The protocol stated “The larger the number entered the more accurate the results will be, but numbers entered will depend on how the epidemic develops... it may be possible to enter several thousand hospitalised patients with relatively mild disease and a few thousand with severe disease, but realistic, appropriate sample sizes could not be estimated at the start of the trial.” The Executive Group, blind to any findings, decided the timing of release of interim results.

STATISTICAL ANALYSES

The four main sets of analyses involve the evenly randomized pairwise comparisons of each study drug vs its controls. The controls for those randomly allocated one particular drug were those patients who could by chance have been randomly allocated that drug (at that moment, in that hospital), but instead got allocated standard of care. If, for a particular study entrant, more than one study drug was available, allocation to standard of care would put that patient into the control group for each of them. Hence, there is partial overlap between the four control groups. Each comparison between a study drug and its controls, however, is evenly randomized (50/50) and unbiased, as both groups are affected equally by any differences between countries or hospitals and by any time trends in patient characteristics or standard of care.

All analyses relate mortality to allocated treatment (ie, they are intent-to-treat analyses). The overall mortality analyses were of all randomised patients (drug vs its control), and the only protocol-specified subgroup analyses are those considering separately patients with moderate and with severe COVID (ie, already ventilated; the type of ventilation was not recorded at study entry.)

Unstratified Kaplan-Meier methods plot 28-day risk. Death rate ratios (RRs) and p-values are from log-rank analyses, stratified for $3 \times 2 = 6$ strata of age and ventilation at entry. If the stratified log-rank Observed minus Expected number of deaths is O-E with variance V, $\log_e RR$ is calculated as (O-E)/V with variance 1/V and a Normal distribution.⁸ The few currently uncertain death times were taken as day 7. Analyses censored patients with outcome not yet reported at day 0, and censored the few inter-hospital transfers at transfer. They did not censor patients discharged alive, as analyses were of mortality during the initial hospitalisation. Forest plots (with 95% CIs only for overall results, otherwise 99% CIs) and chi-squared statistics (sum of $[O-E]^2/V$, with no p-value given) help interpret any apparent heterogeneity of treatment RRs between subgroups. Analyses used SASv9.4 and Rv4.02.

The Discussion includes meta-analyses of the major trial results, based on the inverse-variance-weighted average of $b = \log_e RR$ from each stratum of each trial, using odds ratios where hazard or death rate ratios were unavailable. (This weighted average is derived from the sums of [O-E] and of V over strata.⁸) In general, the more deaths in a stratum the larger V is and, correspondingly, the smaller is the variance of $\log_e RR$, so the more weight that stratum gets. The variance attributed to the result in each stratum and to the overall weighted average reflects only the play of chance at randomization. Homogeneity of different RRs is not needed for this weighted average to be informative.

OVERSIGHT AND FUNDING

The trial is registered (ISRCTN83971151, NCT04315948), with protocol approved by local and WHO ethics committees. Study conduct accorded with Helsinki Declaration and Good Clinical Practice principles, and national trial regulations. Consent forms were signed and retained by patients, but noted for records. Consent was generally prospective but could (where locally approved) be retrospective. The only exclusions were patients without clear consent to follow-up. All other randomized patients were included (“intent-to-treat analyses”). WHO is global co-sponsor and governments national co-sponsors, with trial governance by the International Steering Committee’s Executive Group (EG). External statistical analyses for the independent Data and Safety Monitoring Committee (DSMC) were unseen by the EG or WHO, with two exceptions. After outside evidence of Hydroxychloroquine and Lopinavir futility, the EG requested unblinded analyses of them. Second, after deciding blindly to report all interim results, the EG revised this manuscript, drafted by the WHO trial team and external statisticians.

Participating countries covered almost all local costs and WHO covered all other study costs, receiving no extra funding. Collaborators, committee members, data analysts and data management systems charged no costs, and drugs were donated. No donor unduly (see end-material) influenced analyses, manuscript preparation, or submission. The Writing Group vouch for protocol fidelity and data accuracy and completeness.

RESULTS

From March 22 to October 4, 2020, 11,330 patients were entered from 405 hospitals in 30 countries in all 6 WHO regions. Of these, 64 (0.6%) had no, or uncertain, consent to follow-up, leaving 11,266 for intent-to-treat analyses: 2750 allocated Remdesivir, 954 Hydroxychloroquine, 1411 only Lopinavir-ritonavir, 2063 Interferon, and 4088 no study drug (Figure 1; reporting is 97% complete for those entered >1 month earlier, and 99.7% complete for those entered >3 months earlier). All 3 patients with COVID refuted are included, and survived.

Table 1 shows patient characteristics: 9120 (81%) age <70 years, 6985 (62%) male, 2768 (25%) with diabetes, 916 (8%) already ventilated, and 7002 (62%) randomized on days 0-1. For each drug, patient characteristics were well balanced by the unstratified 50/50 randomization between it and its controls. Deaths were at median day 8 (IQR 4-14) and discharges at median day 8 (IQR 5-13). With 1253 deaths, the Kaplan-Meier estimate of 28-day mortality was 11.8%. This risk depended on several factors, particularly age (20% if ≥ 70 years, 6% if <50 years) and ventilation (39% if ventilated, otherwise 10%).

Table 1 also describes compliance. For Remdesivir the scheduled treatment period was 10 days (or to prior death or discharge). Of those allocated Remdesivir, 98.5% began treatment. Midway through this period 96% were still taking it (as against only 2% of the Remdesivir controls). Likewise, for other drugs compliance midway was high (94-95%) and crossover low (2-6%). Study treatments ceased on schedule. Absolute treatment vs control differences in use of corticosteroids and other non-study treatments were small (Table S2).

For each pairwise drug comparison, Figure 2 gives unstratified Kaplan-Meier analyses of 28-day in-hospital mortality (listing below the x-axis numbers at risk and dying in each week, and numbers dying after day 28), along with death rate ratios (RRs) stratified for age and ventilation. Figure 3 gives RRs in subgroups of age stratified by ventilation and of ventilation stratified by age, and overall RRs stratified by both.

Taking Figures 2 and 3 together, no study drug had any definite effect on mortality, either overall (each $p > 0.10$) or in any subgroup defined by age or ventilation at entry (or other entry characteristics, or geographic region, or corticosteroid use: Figures S6-S9). Death rate ratios (with 95% CIs, and drug vs control numbers of deaths thus far reported) were: Remdesivir RR=0.95 (0.81-1.11, $p=0.50$; 301/2743 vs 303/2708), Hydroxychloroquine RR=1.19 (0.89-1.59, $p=0.23$; 104/947 vs 84/906), Lopinavir RR=1.00 (0.79-1.25, $p=0.97$; 148/1399 vs

146/1372) and Interferon RR=1.16 (0.96-1.39, p=0.11; 243/2050 vs 216/2050). Unstratified comparisons yielded similarly null findings (Figure 2), as did analyses excluding corticosteroid users and multivariate sensitivity analyses estimating simultaneously the effects of all 4 study drugs (Table S3).

If ventilation prevents oral administration of Lopinavir or other study drugs then this could reduce any effects on mortality of allocation to those drugs, but the pre-planned analyses of mortality in patients not already ventilated at entry also indicated no definite protective effect of any study drug (Figure 3).

The pre-planned study outcomes were death, ventilation and time to discharge. No study drug appreciably reduced initiation of ventilation in those not already ventilated. The numbers, study drug vs control, with ventilation initiated after randomization were: Remdesivir 295v284, Hydroxychloroquine 75v66, Lopinavir 124v119, Interferon 209v210 (Table S1).

In this open-label trial, patients who would be considered fit for discharge might be kept in somewhat longer just because they were being given a study drug, but this difficulty can be circumvented. Each of the 3 study treatments scheduled to last >7 days *increased* the percentages remaining in hospital at day 7. If one of these 3 drugs had accelerated recovery then the sizes of these increases should have differed, but they did not: the increases were strikingly similar. The proportions still hospitalized at day 7, study drug vs control, were Remdesivir 69%v59%, Hydroxychloroquine 64%v54%, Lopinavir 68%v59% (Table 1). The medically informative result is the lack of any material difference between these 3 increases.

Supplementary analyses by treatment allocation (Tables S2-S3, Figures S2-S9) tabulate co-medication (finding only small absolute differences), provide a multi-variable Cox regression fitting all 4 treatment effects simultaneously (yielding mortality RRs like those in Figure 3), subdivide 28-day mortality graphs (like those in Figure 2) by ventilation at entry, and give subgroup analyses of mortality RRs by many patient characteristics and by corticosteroid use (identifying no noteworthy subgroup-specific or geographic variation).

All active treatment ended within ≤ 14 days, and the numbers of deaths during this 14-day period with any cardiac cause mentioned on the electronic death record was Remdesivir 7v8, Hydroxychloroquine 4v2, Lopinavir 6v3, and Interferon 6v8 (Figure S11). Although many COVID deaths involved multi-organ failure, no study drug death was attributed to renal or hepatic disease.

DISCUSSION

The main outcomes of mortality, initiation of ventilation and hospitalization duration were not clearly reduced by any study drug. The mortality findings cannot have been appreciably biased by the open-label design without placebos, or by variation in patient characteristics or local care. The effects on ventilation initiation are unlikely to have been materially biased, and although allocation to 10 days of medication can delay discharge while medication is being given, the striking similarity of this delay with 3 different daily medications is evidence that none had a pharmacological effect that appreciably reduced time to recovery. Although ACTT-1, with placebo control, reported Remdesivir moderately reduced time to recovery, in the present study there were no material effects on ventilation initiation or time to discharge.

The chief aim was to help determine whether any of 4 re-purposed antivirals could at least moderately affect in-hospital mortality, and whether any effects differed between moderate and severe disease. The results should be considered in the context of all the evidence on mortality from properly randomized trials, but for Remdesivir and for Interferon this study provides more than three-quarters of that evidence.

There are 4 trials of Remdesivir vs the same management without it: Solidarity (604 deaths in about 5000 randomized), ACTT-1 (136 deaths in about 1000) and two smaller trials (41 deaths).⁵⁻⁷ Figure 4 gives mortality results from each trial, subdivided by initial respiratory support. (These like-vs-like comparisons allow for the proportion already on high-flow oxygen or ventilation at entry into ACTT-1 having been, by chance, somewhat lower with Remdesivir than with placebo.) Combining data appropriately from all 4 trials,⁸ the Remdesivir vs control death rate ratio (RR) is 0.91 (95% CI 0.79-1.05).

Interpretation should chiefly reflect not the p-value ($p=0.21$) or point estimate ($RR=0.91$) but the confidence interval (0.79-1.05), which shows the range of death rate ratios comfortably compatible with the weighted average of the findings from all trials. This absolutely excludes the suggestion that Remdesivir can prevent a substantial fraction of all deaths. The confidence interval is comfortably compatible with prevention of a small fraction of all deaths, but is also comfortably compatible with prevention of no deaths (which would be consistent with the apparent lack of any reduction by Remdesivir in the initiation of ventilation or the duration of hospitalization in Solidarity).

The statistical uncertainties are much greater if attention is restricted to particular subgroups or time periods.⁹ If Remdesivir has no effect on mortality then chance could still produce somewhat favourable findings in a subgroup of the results for all trials, with more striking findings in a selected subgroup of a particular trial (as in the one subgroup of ACTT-1 where the death rate ratio appeared to be 0.30: Figure 4). Although both ACTT-1 and Solidarity envisaged the possibility of different degrees of benefit in lower- and higher-risk patients, the

particular lower-risk/higher-risk subdivision of the ACTT-1 findings in Figure 4 was unplanned. (The ACTT-1 protocol specified separate analyses of those not requiring *any* oxygen, with only 3/75 vs 3/63 deaths in ACTT-1, 11/661 vs 13/664 in Solidarity, and 5/384 vs 4/200 in SIMPLE; overall RR=0.82, but with wide confidence interval 0.43-1.55.) Thus, although the all-trials subtotals in Figure 4 suggest some benefit in low-risk patients and some hazard in high-risk inpatients (with the absolute benefit in low-risk appearing somewhat smaller than the absolute hazard in high-risk), neither subtotal should be considered in isolation from the other subtotal, or from the CI for the total.

For Hydroxychloroquine and Lopinavir, Solidarity found no definite evidence of benefit or of hazard in any subgroup. The only other substantial trial of these two drugs is Recovery,^{10,11} which for these drugs is larger than Solidarity. Combination of log-rank analyses from these two relatively large trials (by the meta-analysis methods used in Figure 4) consolidate the findings of both.

For Hydroxychloroquine, the joint mortality RR (combining 2 trials) was 1.11, 95% CI 0.99-1.24, with no apparent benefit whether ventilated or not. This CI excludes any material benefit from this Hydroxychloroquine regimen in hospitalized COVID. It is compatible with some hazard, but does not demonstrate hazard. Despite concerns that the loading dose could be temporarily cardiotoxic, in neither trial was there any excess mortality during the first few days, when blood levels were highest. Neither trial recorded dosage/kg, obesity, or cardiac parameters, and cardiac deaths were too few to be reliably informative. A recent meta-analysis identified 27 small randomized Hydroxychloroquine trials (total 167 deaths, RR=1.00, 0.71-1.42);¹² combining all 29 trials, RR=1.10, 0.99-1.22, again excluding any material benefit.

For Lopinavir (always co-administered with Ritonavir), the joint mortality RR (combining Solidarity, Recovery and the only informative smaller trial¹³) was 1.02, 95% CI 0.91-1.14. Although Lopinavir tablets could not be swallowed by ventilated patients, there was no apparent benefit in analyses restricted to those not already being ventilated at entry. This CI indicates no material effect on mortality, and excludes a 10% proportional reduction. An add-on study within Solidarity, Discovery, recorded many clinical parameters, identifying an unexpected increase in creatinine (perhaps because blood levels are higher than in similarly-dosed HIV patients^{14,15}), but Solidarity and Recovery recorded no renal or hepatic deaths with Lopinavir.

For Interferon- β 1a no large mortality trials have been reported. Based on about 4000 patients, the mortality RR in Solidarity was 1.16, 0.96-1.39; p=0.11 (or 1.12, 0.83-1.51, without Lopinavir co-administration: Figure S9). This does not demonstrate hazard, but the lower confidence limit does exclude a moderate mortality reduction in these circumstances. About half the interferon-allocated patients (and half their controls) received corticosteroids,¹⁶ but the interferon vs control mortality RR seemed unaffected by corticosteroids. Most

interferon was subcutaneous, and subcutaneous and intravenous interferon have different pharmacokinetics,¹⁷ but the clinical relevance of this is unclear. Randomization to Interferon is ceasing in Solidarity on October 16, but other evidence will emerge: a report that nebulized Interferon- β 1a might be highly effective involved only about 100 COVID patients (NCT04385095), but the ongoing placebo-controlled ACTT-3 trial of subcutaneous Interferon- β 1a aims to involve 1000 (NCT04492475).

For each of these 4 repurposed non-specific antivirals, several thousand patients have now been randomized in various trials. The unpromising overall findings from the regimens tested suffice to refute early hopes, based on smaller or non-randomized studies, that any will substantially reduce inpatient mortality, initiation of ventilation or hospitalisation duration. Narrower confidence intervals would be helpful (particularly for Remdesivir), but the main need is for better treatments. Solidarity is still recruiting about 2000 patients per month, and efficient factorial designs will allow it to assess further treatments, such as immune-modulators and specific anti-SARS-Cov-2 monoclonal antibodies.

The chief acknowledgement is to the thousands of patients and their families who participated in this trial, and the hundreds of medical staff who randomized and cared for the patients. The Ministries of Health of the participating Member States and their national institutions provided critical implementation support. The views expressed are those of the Writing Group, not necessarily those of WHO. NJ White et al⁴ provided unpublished Hydroxychloroquine pharmacokinetic data, the Recovery trial^{10,11} shared log-rank statistics, the ACTT-1 trial⁵ shared subgroup hazard ratios, and Bin Cao shared Wuhan trial⁶ details.

MS preparation, revision and submission was controlled by the WHO trial team and the writing committee. There were no funders for the main Solidarity trial, but the Discovery add-on study received EU Horizon 2020 research and innovation program grant 101015736. Participating countries covered almost all local costs and WHO covered all other study costs, receiving no extra funding. Collaborators, committee members, data analysts and data management systems charged no costs, and drugs were donated. Castor EDC donated and managed their cloud-based clinical data capture and management system, blind to study findings. Anonymized data handling and analysis was by the Universities of Berne, Bristol and Oxford. Remdesivir was donated by Gilead Sciences, Hydroxychloroquine by Mylan, Lopinavir by Abbvie, Cipla and Mylan, and Interferon β 1a by Merck KGaA (subcutaneous) and Faron (intravenous).

REFERENCES

1. World Health Organization, R&D Blueprint. A coordinated global research roadmap: 2019 novel coronavirus. Geneva, Switzerland March 2020 https://www.who.int/docs/default-source/coronaviruse/coordinated-global-research-roadmap.pdf?sfvrsn=21b0f5c4_1&download=true (accessed October 3, 2020).
2. World Health Organization, R&D Blueprint. Informal consultation on prioritization of candidate therapeutic agents for use in novel coronavirus 2019 infection <https://www.who.int/teams/blueprint/covid-19> (accessed October 3, 2020).
3. World Health Organization, R&D Blueprint. An international randomised trial of additional treatments for COVID-19 in hospitalised patients who are all receiving the local standard of care <https://www.who.int/publications/m/item/an-international-randomised-trial-of-additional-treatments-for-covid-19-in-hospitalised-patients-who-are-all-receiving-the-local-standard-of-care> (accessed October 3, 2020).
4. White NJ, Watson JA, Hoglund RM, Chan XHS, Cheah PY, Tarning J. COVID-19 prevention and treatment: A critical analysis of chloroquine and hydroxychloroquine clinical pharmacology. *PLoS Med* 2020;17(9):e1003252.
5. Beigel JH, Tomashek KM, Dodd LE, et al. Remdesivir for the treatment of Covid-19 — preliminary report. *N Engl J Med* 2020 doi:10.1056/NEJMc2022236.
6. Wang Y, Zhang D, Du G, et al. Remdesivir in adults with severe COVID-19: a randomised, double-blind, placebo-controlled, multicentre trial. *Lancet* 2020;395:1569-78. [https://doi.org/10.1016/S0140-6736\(20\)31022-9](https://doi.org/10.1016/S0140-6736(20)31022-9).
7. Spinner CD, Gottlieb RL, Criner GJ, et al. Effect of Remdesivir vs Standard Care on Clinical Status at 11 Days in Patients With Moderate COVID-19: A Randomized Clinical Trial. *JAMA*. 2020;324(11):1048-57. doi:10.1001/jama.2020.16349.
8. Early Breast Cancer Trialists' Collaborative Group (EBCTCG). Effects of chemotherapy and hormonal therapy for early breast cancer on recurrence and 15-year survival: an overview of the randomised trials. *Lancet* 2005; 365: 1687–1717.

9. Peto R. Current misconceptions: that subgroup-specific trial mortality results often provide a good basis for individualising patient care. *British Journal of Cancer* (2011) 104, 1057-58 doi:10.1038/bjc.2011.79.
10. RECOVERY collaborative group. Effect of hydroxychloroquine in hospitalized patients with COVID-19. *N Engl J Med* DOI: 10.1056/NEJMoa2022926 (online October 8, 2020).
11. RECOVERY Collaborative Group. Lopinavir–ritonavir in patients admitted to hospital with COVID-19 (RECOVERY): a randomised, controlled, open-label, platform trial. *Lancet* DOI: [https://doi.org/10.1016/S0140-6736\(20\)32013-4](https://doi.org/10.1016/S0140-6736(20)32013-4) (Online October 5, 2020).
12. Axfors C, Schmitt AM, Janiaud P, et al. Mortality outcomes with hydroxychloroquine and chloroquine in COVID-19: an international collaborative meta-analysis of randomized trials. medRxiv preprint, posted September 18, 2020. doi: <https://doi.org/10.1101/2020.09.16.20194571> .
13. Cao B, Wang Y, Wen D, et al. A trial of Lopinavir-Ritonavir in adults hospitalized with severe Covid-19. *N Engl J Med* 2020;382:1787-99. doi:10.1056/NEJMoa2001282.
14. Venisse N, Peytavin G, Bouchet S et al. Concerns about pharmacokinetic (PK) and pharmacokinetic-pharmacodynamic (PK-PD) studies in the new therapeutic area of COVID-19 infection. <https://doi.org/10.1016/j.antiviral.2020.104866> *Antiviral Res* 181 (2020) 104866.
15. Gregoire N, Le Turnier P, Gaborit BJ ey al. Lopinavir pharmacokinetics in COVID-19 patients. *J Antimicrob Chemother* doi:10.1093/jac/dkaa195.
16. Jalkanen J, Pettilä V, Huttunen T, et al. Glucocorticoids inhibit type I IFN beta signaling and the upregulation of CD73 in human lung. *Inten Care Med* 2020 Oct;46(10):1937-40. doi: 10.1007/s00134-020-06086-3.
17. Jalkanen J, Hollmén M, Jalkanen S. Interferon beta-1a for COVID-19: critical importance of the administration route. *Crit Care* 2020;24:Article 335. doi: 10.1186/s13054-020-03048-5.

Table 1. Entry characteristics by random allocation, and compliance with that allocation

Excludes 64 without clear consent to follow-up. Comparisons are of each study drug vs concurrent allocation for the same treatment without it (vs the control group by default). The number of 28-d KM is based on the Binomial for the number of patients in the pairwise comparisons. All rights reserved. No reuse allowed without permission.

	All in any intent-to-treat analysis				Remdesivir vs its control		Hydroxychloroquine vs its control		Lopinavir vs its control		Interferon vs its control*	
	Entered No.	%	No. died	28-d KM%	Active	Control	Active	Control	Active	Control	Active	Control
All participants	11266	100	1253	11.8	2743	2708	947	906	1399	1372	2050	2050
Entry characteristics												
Age (years)												
<50	3995	35	237	6.2	961	952	335	317	511	501	720	697
50-69	5125	45	618	12.8	1282	1287	410	396	597	596	934	973
70+	2146	19	398	20.4	500	469	202	193	291	275	396	380
Respiratory support												
No oxygen at entry	3204	28	78	2.5	661	664	345	341	528	539	482	490
On oxygen at entry	7146	63	844	12.8	1828	1811	517	483	759	719	1429	1430
Already ventilated	916	8	331	39.0	254	233	85	82	112	114	139	130
Bilateral lung lesions												
No	1266	11	49	3.7	287	259	154	170	235	256	162	155
Yes	8832	78	1043	12.7	2175	2153	656	618	985	945	1723	1718
Not imaged at entry	1168	10	161	14.9	281	296	137	118	179	171	165	177
Prior days in hospital												
0	3289	29	319	9.8	724	712	296	281	423	403	678	677
1	3713	33	384	10.8	917	938	317	312	442	445	681	662
2+	4264	38	550	14.6	1102	1058	334	313	534	524	691	711
Geographic location												
Europe** or Canada	2488	22	188	7.8	715	698	286	267	349	350	254	244
Latin America§	1941	17	400	22.7	470	514	97	96	145	148	474	478
Asia and Africa†	6837	61	665	10.3	1558	1496	564	543	905	874	1322	1328
Other characteristics												
Male	6985	62	852	13.0	1706	1725	574	535	851	802	1303	1278
Current smoking	830	7	93	11.8	178	161	92	82	141	124	136	138
History of – Diabetes	2768	25	379	14.7	707	666	199	205	341	324	489	537
- Heart disease	2337	21	319	14.7	571	567	193	194	289	290	427	456
- Chronic lung disease	635	6	102	17.2	151	145	62	66	95	87	114	109
- Asthma	529	5	56	11.5	139	139	41	46	65	56	75	97
- Chronic liver disease	135	1	21	17.2	36	41	15	14	15	23	11	22
Compliance with allocated treatment												
% who were taking the study drug midway through its scheduled duration‡					95.8	1.6	94.6	5.6	93.6	2.0	93.7	1.9
% of those reported as discharged who were still in hospital on:												
Day 7					69	59	64	54	68	59	55	51
Day 14					22	19	23	20	31	22	19	18
Day 21					9	8	11	10	12	11	8	7

Notes: The few with a particular characteristic unknown are merged with the largest category of that characteristic.

“28-d KM %” is the Kaplan-Meier 28-day % risk of in-hospital death. “No. died” includes any in-hospital deaths after day 28.

* Interferon randomisation was interferon + Lopinavir vs Lopinavir until 4 July, then it was interferon vs standard of care.

** Albania, Austria, Belgium, Finland, France, Ireland, Italy, Lithuania, Luxembourg, Macedonia, Norway, Spain, Switzerland.

§ Argentina, Brazil, Colombia, Honduras, Peru.

† Egypt, India, Indonesia, Iran, Kuwait, Lebanon, Malaysia, Pakistan, Philippines, Saudi Arabia, South Africa.

‡ Compliance is calculated only among those who died or were discharged alive, and is defined as the % taking the study drug midway through its scheduled duration (or midway through the time from entry to death or discharge, if this is shorter).

Figure 1. WHO Solidarity Trial – information to October 4, 2020 on entry, follow-up (FU) and intent-to-treat (ITT) analyses

After asking which treatments were locally available, random allocation (with equal probability) was between local standard of care (SoC) and the available treatments. After excluding 64/11,330 (0.6%) with no/uncertain consent to follow-up, 11,266 remain in the ITT analyses. Each pairwise ITT analysis is between a particular treatment and its controls, ie, those who could have been allocated it but were concurrently allocated the same management without it. There is partial overlap between the 4 control groups.

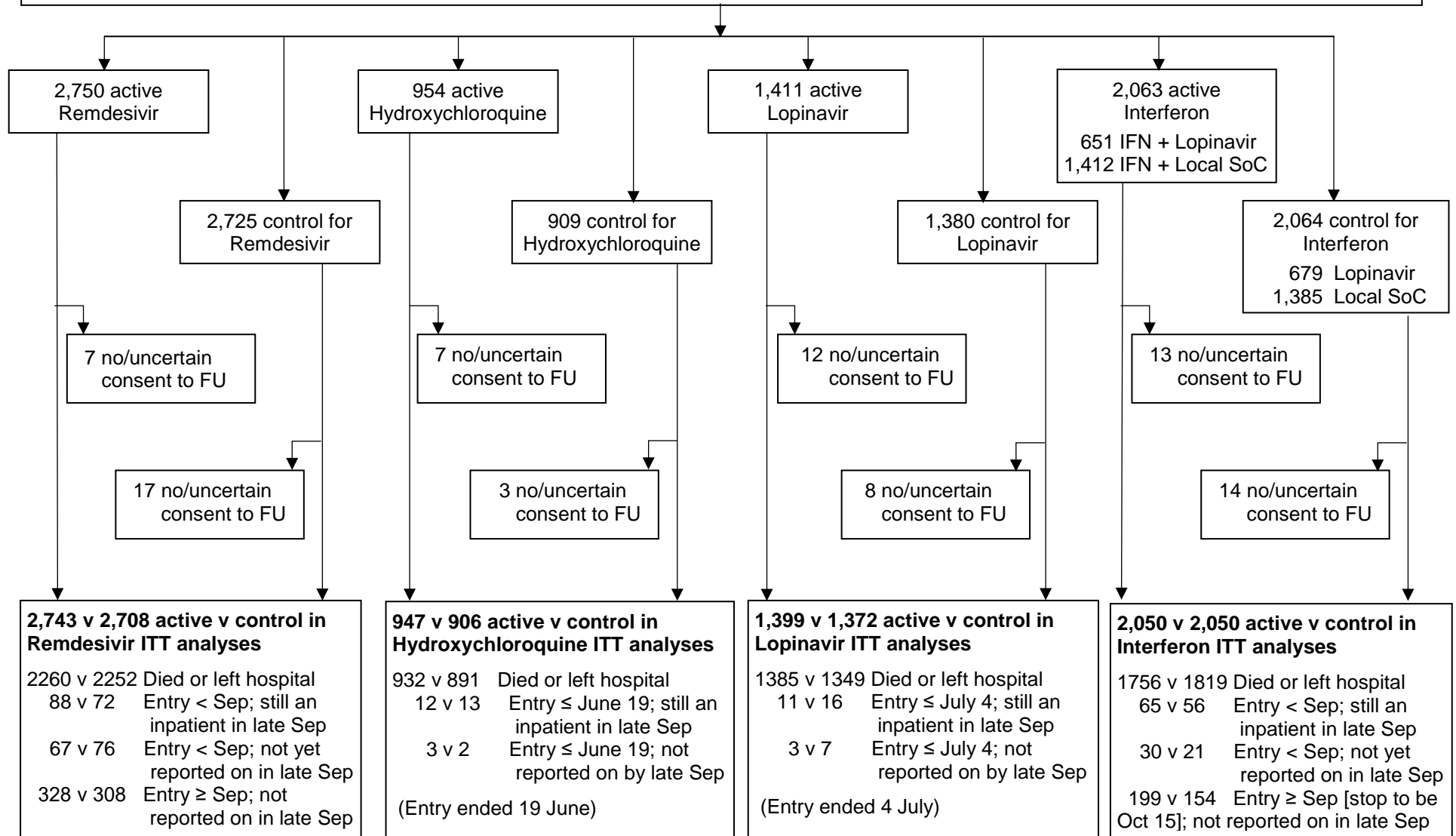
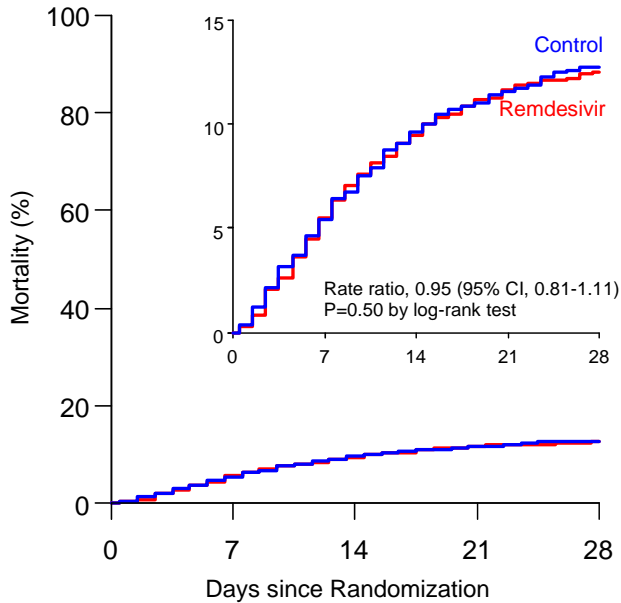


Figure 2. Effects of (a) Remdesivir, (b) Hydroxychloroquine, (c) Lopinavir, and (d) Interferon on 28-day mortality

Kaplan-Meier graphs of in-hospital mortality. The inset shows the same data on an expanded y-axis.

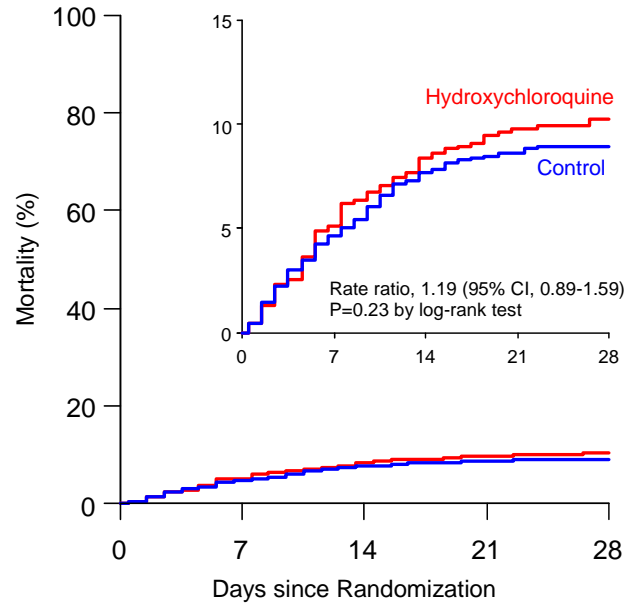
(a) Remdesivir vs its control



Numbers at risk at the start of each week, and numbers dying

Remdesivir	2743	129	2159	90	2029	48	1918	18	1838	16
Control	2708	126	2138	93	2004	43	1908	27	1833	14

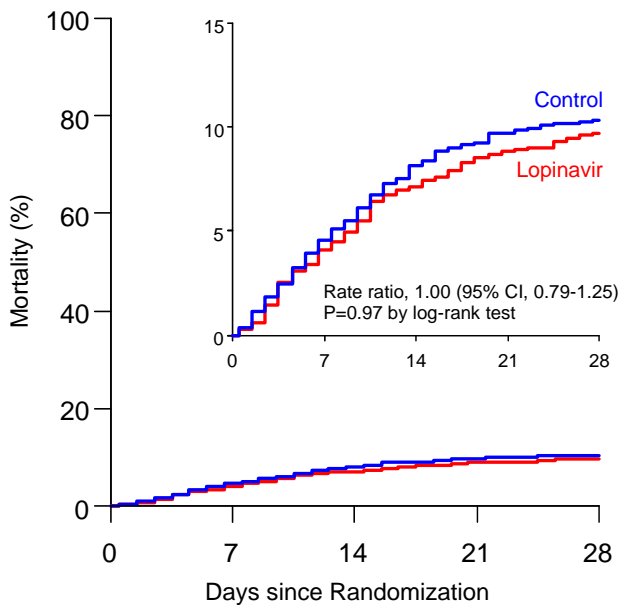
(b) Hydroxychloroquine vs its control



Numbers at risk at the start of each week, and numbers dying

Hydroxyc.	947	48	889	31	854	13	838	6	833	6
Control	906	42	853	27	823	8	814	4	809	3

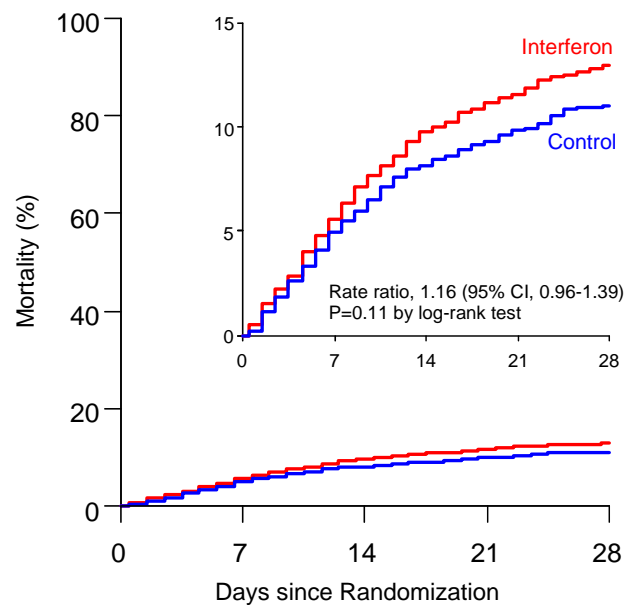
(c) Lopinavir vs its control



Numbers at risk at the start of each week, and numbers dying

Lopinavir	1399	57	1333	42	1282	24	1257	15	1243	10
Control	1372	62	1293	48	1239	21	1216	10	1203	5

(d) Interferon vs its control



Numbers at risk at the start of each week, and numbers dying

Interferon	2050	101	1669	73	1554	31	1483	24	1410	14
Control	2050	91	1725	58	1636	31	1563	21	1498	15

Figure 3. Rate ratios of any death, stratified by age and respiratory support at entry.
 medRxiv preprint doi: <https://doi.org/10.1101/2020.10.15.20209817>; this version posted October 15, 2020. The copyright holder for this preprint (which was not certified by peer review) is the author/funder, who has granted medRxiv a license to display the preprint in perpetuity. All rights reserved. No reuse allowed without permission.

(a) Remdesivir, (b) Hydroxychloroquine, (c) Lopinavir, (d) Interferon, each vs its control

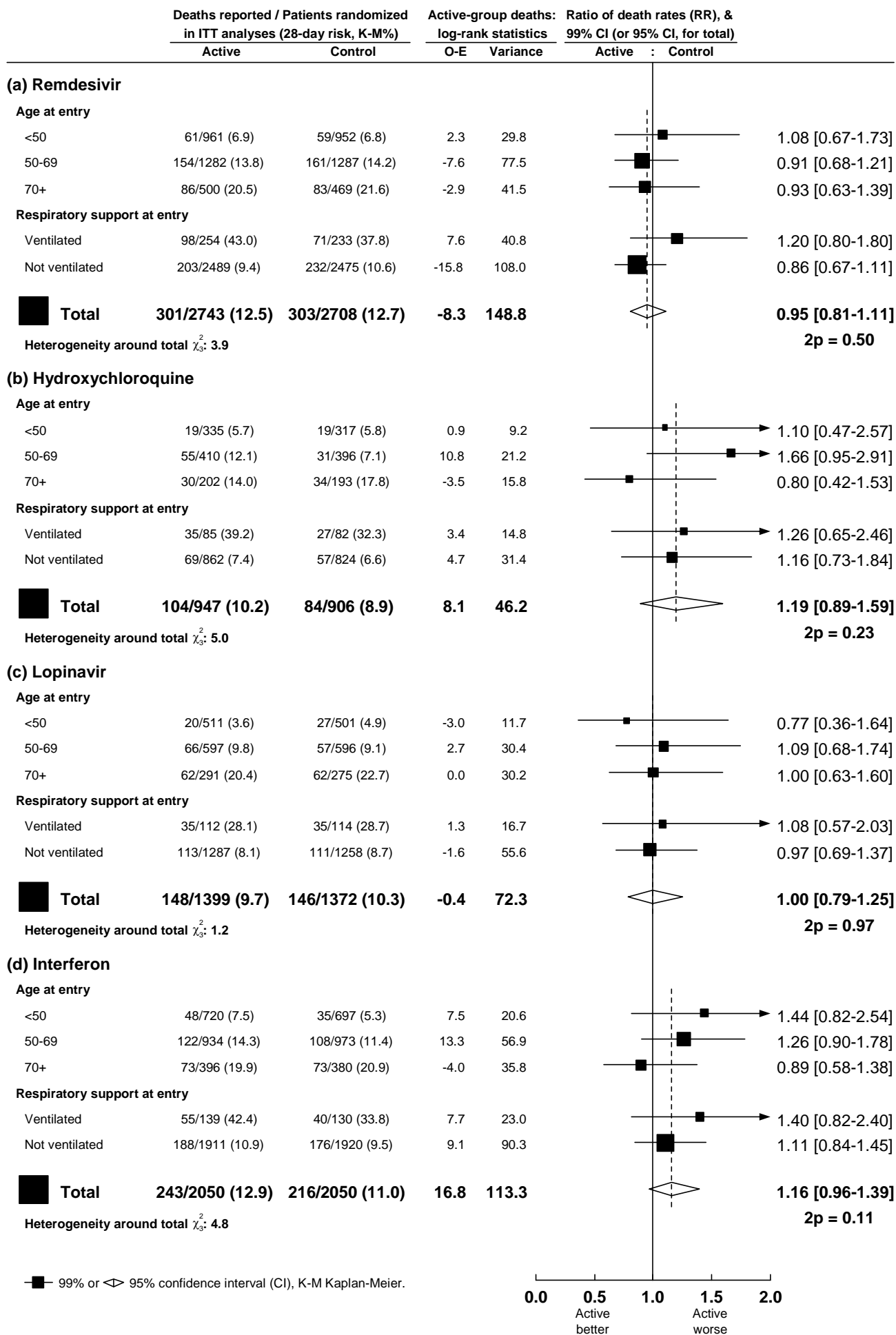
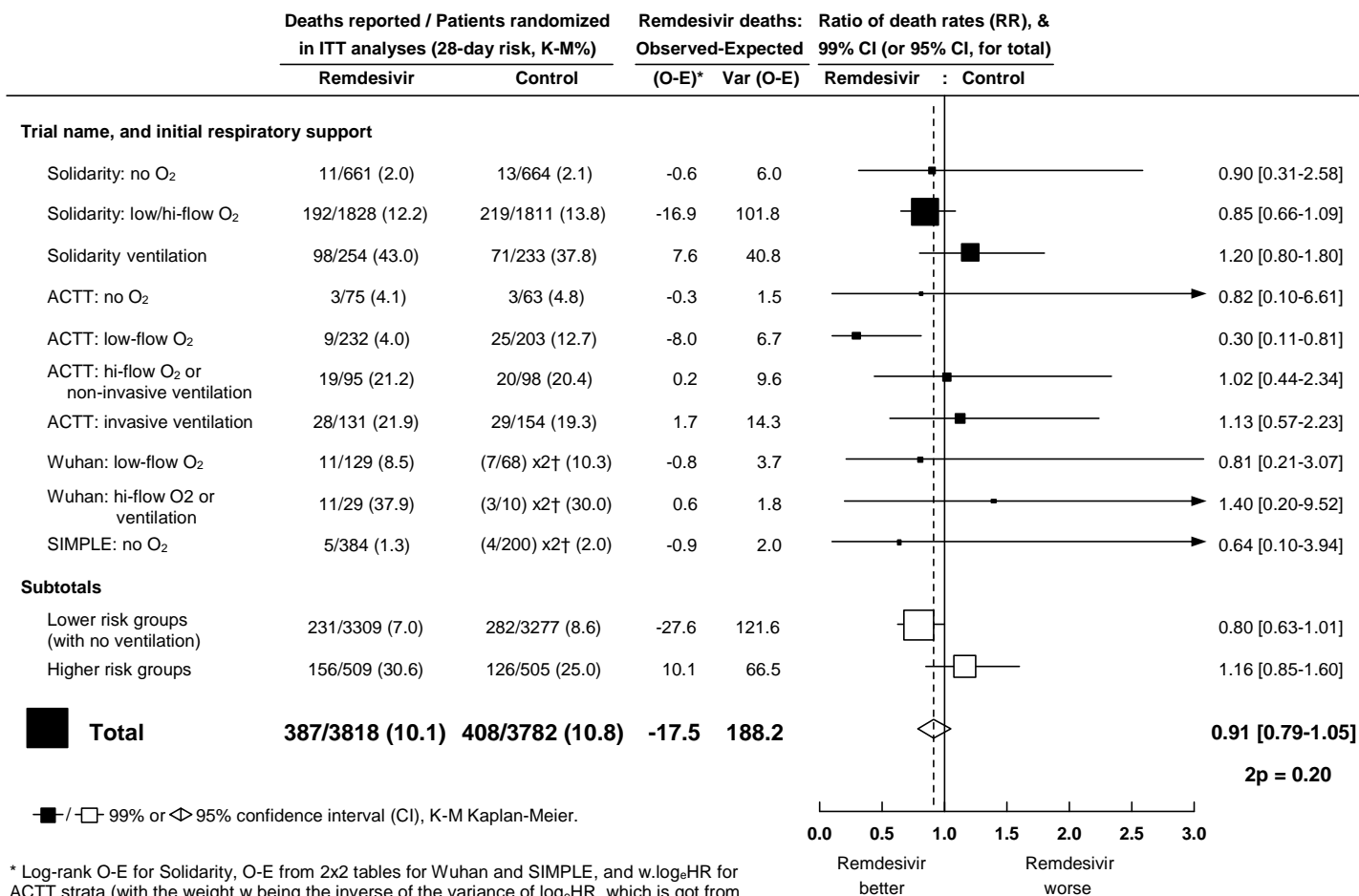


Figure 4. Remdesivir vs control – Meta-analysis of mortality in trials of random allocation of hospitalised COVID-19 patients to Remdesivir on the same treatment without it

medRxiv preprint doi: <https://doi.org/10.1101/2020.10.15.20209817>; this version posted October 15, 2020. The copyright holder for this preprint (which was not certified by peer review) is the author/funder, who has granted medRxiv a license to display the preprint in perpetuity. All rights reserved. No reuse allowed without permission.



* Log-rank O-E for Solidarity, O-E from 2x2 tables for Wuhan and SIMPLE, and w.log_eHR for ACTT strata (with the weight w being the inverse of the variance of log_eHR, which is got from the HR's CI). RR is got by taking log_eRR to be (O-E)/V with Normal variance 1/V. Subtotals or totals of (O-E) and of V yield inverse-variance-weighted averages of the log_eRR values.

† For balance, controls in the 2:1 studies count twice in the control totals and subtotals.