

NEW YORK CENTRAL'S PLANS FOR BIG BRONX STATION

Giant Structure at 149th Street, to be Connected with the
Subway—To Become Great Distributing Point,
with Wide Area of Influence.

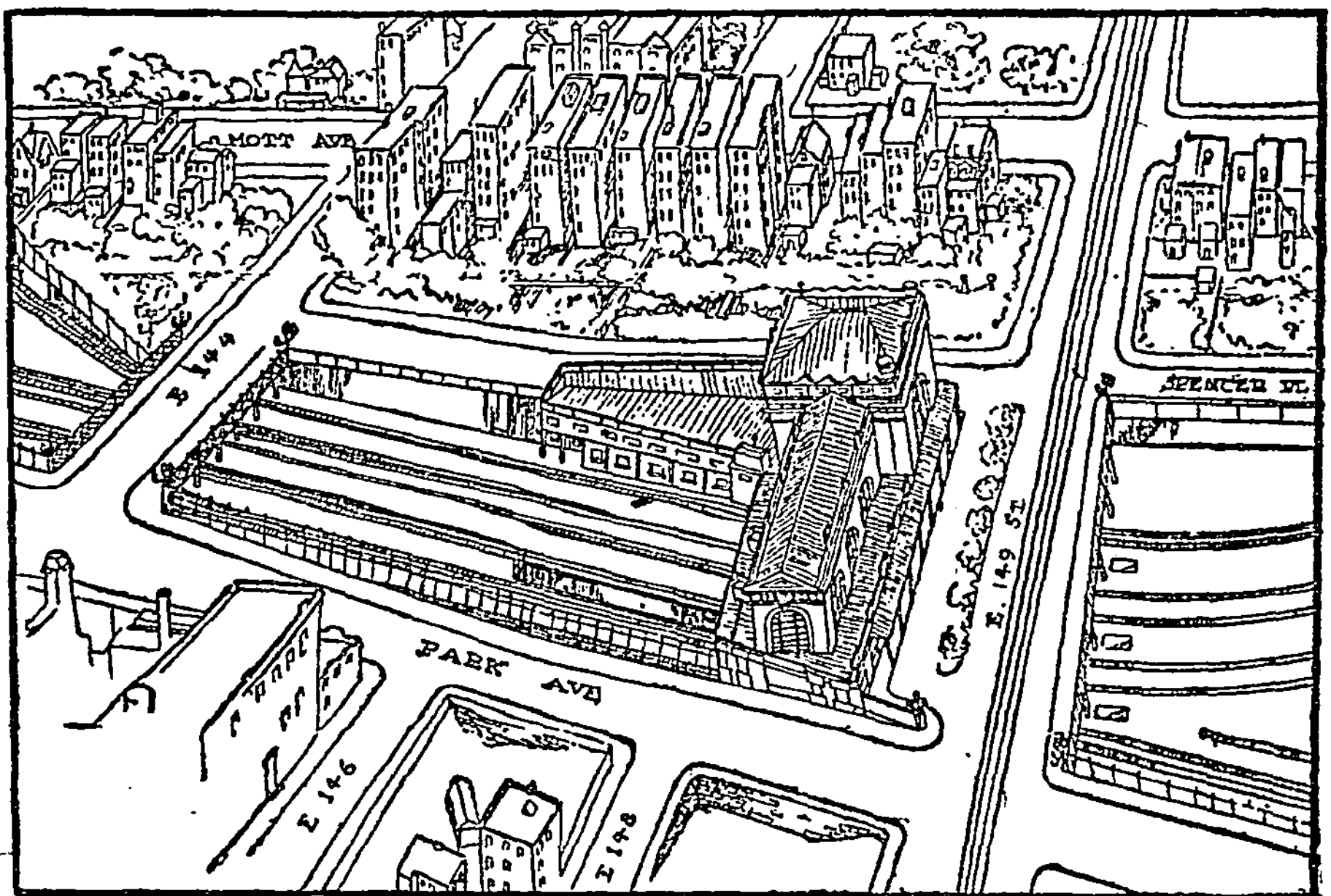
In some respects the most important feature of the New York Central's vast scheme of improvement will be the building of a large station at 149th Street and Park Avenue, in the Bronx. With the passage of a bill recently introduced in the Legislature by Senator Owens and the granting of the necessary rights by the Board of Estimate work on the new station will be begun at once.

The private property needed for the undertaking has already been purchased by the railroad, and the bill now before the Legislature will give the company the necessary rights to pass beneath portions of Spencer Place, 144th Street, Cheever Place, and Mott Avenue.

The new station will be within one short block of the Mott Avenue Subway Station, with which direct connection will be made. One Hundred and forty-ninth Street is just south of the point at which

the New York Central and Harlem Railroad tracks converge, and, as it is assumed that practically all trains on these two systems as well as on the New Haven Road will stop there, the new station will become a distributing point for an enormous number of passengers bound for various parts of the Bronx, and for those who will be able, either by the Subway or surface lines, to reach the west side and Washington Heights most conveniently from this point.

The favorable influence of the proposed improvement on 149th Street can hardly be overestimated. It will bring one step nearer the manifest destiny of that street to form, together with the Lenox Avenue Bridge over the Harlem and 145th Street in Manhattan, a continuous thoroughfare across the entire city from the Hudson to the East River, and the only such thoroughfare north of Fifty-ninth Street.



Proposed New York Central Station — 149th Street and Park Avenue.

The New York Times

Published: February 9, 1908

Copyright © The New York Times