

## AJAS Style Guide (Title Page)

# Isolation and Characterization of Cultured Chicken Oviduct Epithelial Cells and *In Vitro* Validation of Constructed Ovalbumin Promoter in these Cells

Hyeon Yang<sup>1,†</sup>, Hyeon Yang<sup>1,‡</sup>, Bo Ram Lee<sup>1,†</sup>, Hwi-Cheul Lee<sup>1,†</sup>, Sun Keun Jung<sup>1,†</sup>, Ji-Youn Kim<sup>1,†</sup>,  
Jingu No<sup>1,†</sup>, Sureshkumar Shanmugam<sup>1,†</sup>, Yong Jin Jo<sup>1,†</sup>, Haesun Lee<sup>1,†</sup>, Seongsoo Hwang<sup>1,†</sup> and  
Sung June Byun<sup>1,†\*</sup>

\*Corresponding Author: Sung June Byun

Tel: +82-63-238-7263, Fax: +82-63-238-7297, E-mail: pcs1778@korea.ac.kr

<sup>1</sup>Animal Biotechnology Division, National Institute of Animal Science, Rural Development

Administration, 1500, Kongjipatjwi-ro, Iseo-myeon, Wanju-gun, Jeollabuk-do, 55365, Republic of Korea

## ORCID

Sung June Byun: <http://orcid.org/0000-0001-6902-1025>

Hyeon Yang: <http://orcid.org/0000-0003-4162-4410>

Bo Ram Lee: <http://orcid.org/0000-0002-0537-6205>

Hwi-Cheul Lee: <http://orcid.org/0000-0002-7644-2839>

Sun Keun Jung: <http://orcid.org/0000-0002-7787-2718>

Ji-Youn Kim: <http://orcid.org/0000-0002-6422-5829>

Jingu No: <http://orcid.org/0000-0002-7851-7662>

Sureshkumar Shanmugam: <http://orcid.org/0000-0002-3632-3114>

Yong Jin Jo: <http://orcid.org/0000-0001-9081-8874>

Haesun Lee: <http://orcid.org/0000-0002-5269-3959>

서식 있음: 글꼴: 기움임꼴

서식 있음: 위 첨자/아래 첨자없음

### 메모 [AJAS1]: Author Byline

- First name, middle name (or initial), last name (italic)
- Author names will be published exactly as they appear in the accepted manuscript.
- Do not include titles (Dr., PhD, Professor, etc.).
- Allow up to two corresponding authors and two first authors.

### 메모 [AJAS2]: Affiliation

- Include each component in order of small to large (Department, Division, Section, Institution, City Zip Code, Country).
- Do not use abbreviations.
- List each affiliation individually and in full.

### 메모 [u3]: Please add correct authors' orcid number.

You can apply to <https://orcid.org/> to obtain ORCID number.  
All coauthors are required to provide ORCID number (It is mandatory requirement to all corresponding authors.).

27 | Seongsoo Hwang: <http://orcid.org/0000-0002-0512-7049>

28 | Sung June Byun: <http://orcid.org/0000-0001-6909-1025>

Accepted Article

## AJAS Style Guide (Main Text)

**Title of the manuscript:** Isolation and Characterization of Cultured Chicken Oviduct

Epithelial Cells and *In Vitro* Validation of Constructed Ovalbumin Promoter in these Cells

### ABSTRACT

**Objective:** Transgenic hens hold a great promise for the production of various valuable protein. Through virus transduction into stage X embryo, the transgene expression under the control of constructed chicken ovalbumin promoters has been successfully achieved. However, absence of the validation system that can evaluate differently developed ovalbumin promoters *in vitro*, remains to be overcome.

**Methods:** In the present study, chicken oviduct epithelial cells (cOECs) were isolated from oviduct tissue and shortly cultured with keratinocyte complete medium supplemented with chicken serum. The isolated cells were characterized with immunofluorescence, western blot, and flow cytometry using oviduct-specific marker. Chicken mutated ovalbumin promoter (Mut-4.4-kb-pOV) was validated in these cells using luciferase reporter analysis.

**Results:** The isolated ~~cOECs~~ cOECs revealed that the oviduct-specific marker, ovalbumin protein, was clearly detected by immunofluorescence, western blot, and flow cytometry analysis revealed that approximately 79.40% of the cells contained this protein. Also, luciferase reporter analysis showed that the constructed Mut-4.4-kb-pOV exhibited 7.1-fold ( $p < 0.001$ ) higher activity in the cOECs.

**Conclusion:** Collectively, these results demonstrate the efficient isolation and characterization of cOECs and validate the activity of the constructed ovalbumin promoter in the cultured cOECs. The *in vitro* validation of the recombinant promoter activity in cOECs can facilitate the production of efficient transgenic chickens for potential use as bioreactors.

**Keywords:** Chicken; Oviduct epithelial cells; Ovalbumin promoter; Luciferase

서식 있음: 들여쓰기: 왼쪽: 0 cm, 첫 줄: 0 글자

서식 있음: 번호 매기기: 이어서

서식 있음: 가운데, 들여쓰기: 왼쪽: 0 cm, 첫 줄: 0 글자

서식 있음: 글꼴: 기욤임꼴

**메모 [AD4]:** It is not entirely clear why the abstract section is organized in terms of "Objective:, Methods:, Results:, Conclusion:," when the text provides general abstract formatting guidelines not related to each subpoint (e.g., the text following "Objective:" does not discuss how the "objective" section should be handled).

Is the goal to provide an example of how these sections should be formatted? If so, after the sentence in the "Results" section saying "...should be separated into the following sections:...", one possibility would be to add "The sections should be labeled **Objective:, Methods:, Results:, and Conclusion:**, respectively (in bold) and should each start on a new line," or "Structured abstracts should be labeled in accordance to the template provided at the end of this section," and then provide an example with dummy text.

서식 있음: 글꼴: 기욤임꼴

서식 있음: 글꼴: 기욤임꼴

**메모 [AJAS5]:** Keywords

- Up to six keywords.
- Capitalize the first letter of each keyword.
- Separated by semicolon.
- Keywords can be selected from the CAB Thesaurus (<http://www.cabi.org/cabthesaurus/>).

## INTRODUCTION

Transgenic hens have historically been considered ideal bioreactors due to several advantages, such as their short generation interval, low maintenance cost, and stability of recombinant proteins, compared with other species and provided a valuable tool for the production of therapeutic proteins in eggs [1]. To date, substantial progress has been made toward the generation of transgenic chickens and genetic modifications, including precise genome editing by virus transduction into Eyal-giladi and Kochav (EGK) stage X embryos [2, 3]. Recent studies have successfully produced recombinant proteins such as human epidermal growth factor [4], human lysozyme [5], and human neutrophil defensin 4 [6], which indicates that virus-mediated avian transgenesis could be useful for the establishment of bioreactors.

A ~~Chicken-chicken~~ annually produce more than 300 eggs through ~~their-its~~ oviduct and chicken oviduct epithelial cells (cOECs) have unique features that are advantageous for the production of egg white protein, including ovalbumin, conalbumin, ovomucoid, and lysozyme. The chicken ovalbumin gene promoter, which leads to highly potent and tissue-specific ovalbumin expression, has been used for the production of transgenic hens [7]. In addition, ovalbumin promoters of different sizes, ranging from approximately 1.35-to-4.4-kb including the transcription or translation start sites, and estrogen response elements (EREs) have been developed in transgenic chickens [8, ~~9~~, 10]. However, many limitations, such as absence of validation system that can evaluate expression and regulation of recombinant proteins driven by different ovalbumin promoters in *in vitro*, remain to be overcome.

Substantial efforts have been made to establish an *in vitro* system for the culture of cOECs for practical applications in avian transgenesis [11] and to understand the physiological and endocrinological roles of oviduct epithelium [12, ~~13~~, ~~14~~, ~~15~~]. However, a simple isolation, culture, and characterization method for cOECs still remains to be challenging primarily due to relatively speedy growth and proliferation levels of other cells, such as oviductal tissue fibroblast cells. Therefore, an optimized establishment of cOECs is required to validate the transgene expression driven by a constructed ovalbumin promoter or evaluate variously developed oviduct specific promoters in *in vitro* prior to producing transgenic chickens.

메모 [AJAS6]: Section Headings  
Introduction  
Materials and Methods  
Results  
Discussion  
Conflict of Interest  
Acknowledgments

서식 있음: 글꼴: 기움임꼴

서식 있음: 글꼴: 기움임꼴

서식 있음: 글꼴: 기움임꼴

In the current study, we developed a simple method for the isolation and characterization of cOECs and their subsequent cultivation to validate the constructed ovalbumin promoter through luciferase reporter analysis. This study will thus facilitate the optimization of recombinant protein expression in eggs through avian transgenesis.

## MATERIALS AND METHODS

### Experimental animals and animal care

The experimental protocol used in this study was based on an approved animal-use document and was in accordance to the guidelines of the Institute Animal Care and Use Committee (IACUC) of the National Institute of Animal Science (Approval No. 2017-219) at the Republic of Korea.

### Isolation and culture of chicken oviduct epithelial cells

To isolate chicken oviduct epithelial cells (cOECs), an oviduct tissue from an egg-laying White Leghorn (WL) hen (30-35 weeks) was dissected, separated and dissociated, and the method used for the isolation of oviduct cells was modified from that used in a previous study [14]. In this study, 15- to 20 cm-long oviduct tissue from the infundibulum to the magnum was separated from the oviduct, and the isolated tissue was washed with 70% ethanol, washed twice with phosphate-buffered saline (PBS; Gibco, Carlsbad, CA) supplemented with 1% antibiotic/antimycotic (anti-anti; Gibco, Carlsbad, CA), and placed on the petri dish. The mesosalpinx of the tissue was trimmed, gently torn off using microsurgical scissors horizontally to expose the inner surface, and soaked with fresh PBS to avoid drying. The inner surface was then delicately scraped several times with surgical blade, and the scraped tissue fragments were finely minced into approximately 2-mm fragments with microsurgical scissors. The minced tissue fragments were centrifuged at 700 g and 4 °C for 10 min, and the supernatant was removed. The pellets were digested with 10 mL (1 mg/~~mL~~mL) of collagenase P (Roche, Basel, Switzerland) supplemented with 10 mM HEPES (Sigma, Saint Louis, MO) and placed in an incubator with 5% CO<sub>2</sub> at 37 °C for 30 min, with vortexing every 5 min. The digested samples were centrifuged (1-step) at 700 g and 4 °C for 10 min, and the supernatant was transferred with a

fresh tube and centrifuged (2-step) again. The pellets from the first and second steps of the centrifugation were suspended in cell culture medium, and suspended tissue masses were totally placed on 100-mm collagen-treated dishes (Corning, New York, NY) with Keratinocyte complete medium (K-SFM; Gibco, Carlsbad, CA) supplemented with 5% chicken serum (Gibco, Carlsbad, CA) and 1% anti-anti. The oviduct cells at passage 0 were isolated from the tissue masses in few days, observed under a microscope (Eclipse Ti, TE300; Nikon, Tokyo, Japan). Then, the cells from passage 1 were continuously cultured in K-SFM with 5% chicken serum, 1% anti-anti, and sub-cultured by trypsin treatment and centrifugation. The chicken embryonic fibroblast cells line DF-1 (CRL-12203; American Type Culture Collection, Manassas, VA) were grown in Dulbecco's modified Eagle's medium (DMEM; Gibco, Carlsbad, CA) supplemented with 10% fetal bovine serum (FBS; Gibco, Carlsbad, CA), 1% anti-anti, and 2% chicken serum.

#### **Scanning and electron microscopy (SEM)**

The magnum portion of a chicken oviduct tissue was primarily fixed with 4% paraformaldehyde at 4 °C, and washed three times with 0.05 M sodium cacodylate buffer. The sample was then secondarily fixed for 1.5 h with 1% osmium tetroxide in sodium cacodylate buffer, subjected to two brief washes, and stained overnight with 0.5% uranyl acetate at 4 °C. For SEM analysis, the sample was dried twice with 100% isoamyl acetate for 15 min in a critical point dryer, mounted on metal stubs, coated with gold, and observed under a Bio-LV SEM (SN-3000; Hitachi, Tokyo, Japan).

#### **Chromosome Karyotyping**

COECs at passage 2 in a collagen-treated 75T flask were treated 200 µL of colcemid (Gibco, Carlsbad, CA) stock solution, incubated at 37 °C with 5% CO<sub>2</sub> for 4 h and harvested by centrifugation at 1000 rpm for 10 min. After aspiration of the supernatant, the cells were suspended in 5 mL of hypotonic solution (0.075 M KCl) and incubated at 37 °C for 10 min. Subsequently, 500 µL of Carnoy's fixative (ethanol:acetic acid = 3:1) was added to the cells, and the cells were again harvested by centrifugation as described above. After aspiration, 3 mL of Carnoy's fixative was added to cells, and the cells were incubated for at least 20 min and harvested by centrifugation at 1000 rpm for 10 min, these steps were repeated. The pellets obtained after the final centrifugation were spread on a

glass slide, and the slide was baked at 60 °C for 30 min, and the chicken chromosomes were stained with Giemsa.

## RT-PCR

RNA from the oviduct magnum tissue (positive control), DF-1 (negative control), and cOECs at passage 2 was extracted using an RNA mini preparation kit (Qiagen, Hilden, Germany). For RT-PCR analysis, total RNA (0.5 µg) was used for cDNA synthesis with the Superscript IV First-Strand Synthesis System (Invitrogen, Carlsbad, CA). RT-PCR was performed with HS prime Taq DNA polymerase (Genet Bio, Korea) using SimpliAmp PCR system (Applied Biosystems, Foster City, CA). The primer sequences (Table 1) were selected from the reference or designed with NCBI Primer Blast. Primer pairs were used to amplify specific region into chicken oviduct ovalbumin, ovomucoid, estrogen receptor 1, occludin, cytokeratin 14, E-cadherin, and β-actin genes. The PCR conditions consisted of 94 °C for 10 min, followed by 35 cycles of 94 °C for 30 s, 58 °C for 30 s, 72 °C for 30 s, and 72 °C for 5 min.

## Immunofluorescence

cOECs at passage 1 and DF-1 were seeded into a 4-well cell culture dish, fixed with 4% paraformaldehyde (Molecular probes, Eugene, OR) and permeabilized with 0.5% Triton-X (Gibco, Carlsbad, CA) for 15 min at room temperature. The cells were blocked with 5% bovine serum albumin (BSA; Molecular probes, Eugene, OR) for 1 h at room temperature, primarily incubated with the rabbit polyclonal anti-ovalbumin antibody (1:250 (1 mg/~~m~~mL) dilution, Abcam, Cambridge, UK) overnight at 4 °C and then secondarily incubated with mouse anti-rabbit FITC-conjugated antibody (1:500 (2 mg/~~m~~mL) dilution, Abcam, Cambridge, UK) for 1 h, and washed with PBS. Immunofluorescence were analyzed under a fluorescence microscope (DMI 6000 B; Leica, Wetzlar, Germany).

## Western blot

Protein from the oviduct magnum tissue (positive control), chicken leg muscle tissue (negative control), DF-1 (negative control), and cOECs at passage 2 were extracted using RIPA lysis buffer (Thermo Scientific, Waltham, MA) supplemented with a protease and phosphatase inhibitor cocktail

(Thermo Scientific, Waltham, MA). The protein concentration was determined with the Bradford assay (Bio-Rad, Hercules, CA). Protein extracts (15 µg) was electrophoresed with an SDS-PAGE 4-12% gel system (Invitrogen, Carlsbad, CA) and transferred to polyvinylidene fluoride (PVDF; Invitrogen, Carlsbad, CA) membrane. The membrane was blocked with 5% skim milk in ~~P~~phosphate-buffered saline (PBS; Thermo Scientific, Waltham, MA) for 1 h and then primarily incubated with rabbit polyclonal anti-ovalbumin antibody (1:1000 (1 mg/~~m~~mL) dilution, Abcam) and rabbit monoclonal anti-vinculin antibody (1:1000 (0.054 mg/~~m~~mL) dilution, Abcam, Cambridge, UK) overnight 4 °C. The membrane was washed and then secondarily incubated with mouse anti-rabbit HRP conjugated antibody (1:2000 (0.4 mg/~~m~~mL) dilution, Santa Cruz, Dallas, TX) for 30 min at room temperature. Amersham ECL prime (GE Healthcare, Buckinghamshire, UK) substrate was used to visualize the target bands, and the bands were analyzed using EZ-Capture II (Atto, Amherst, NY).

#### Flow cytometry

cOECs at passage 2 and DF-1 were washed with PBS (Gibco) and recovered through trypsin treatment. The recovered cells were washed with PBS (Gibco), fixed with 2% paraformaldehyde (Molecular probes) for 20 min, and permeabilized with 0.02% Triton-X (Gibco) for 15 min. The cells were primarily incubated with the rabbit polyclonal anti-ovalbumin antibody (1:1000 (1 mg/~~m~~mL) dilution, Abcam) for 30 min at room temperature and then secondarily incubated with the mouse anti-rabbit FITC antibody (1:1000 (2 mg/~~m~~mL) dilution, Abcam) for 20 min at room temperature, only the secondary antibody staining was used as an isotype control. The two abovementioned antibodies were diluted with permeabilization buffer (Gibco). The cells were subsequently washed three times and each 1 x 10<sup>4</sup> cells ~~—was—were~~ analyzed using a FACS Calibur (BD Bioscience, Franklin Lakes, NJ).

#### Vector construction and transfection

To validate the ovalbumin promoter activity into cOECs, the mutated 4.4-kb ovalbumin gene promoter (Mut-4.4-kb-pOV) with a 1-kb deletion between the estrogen response elements (EREs) and the 2.8-kb ovalbumin promoter was constructed [10]. This DNA fragment was entirely synthesized, and then cloned into pGL4.11 (luc2p) reporter vector (Promega, Madison, WA). cOECs at passage 4



and DF-1 were transfected with Lipofectamine 3000 (Invitrogen, Carlsbad, CA) according to the manufacturer's instructions. Briefly, cOECs and DF-1 were seeded into a 12-well cell culture plate, and the transfection was performed at 70% cell density, based on molecular ratio of each vector, namely, mock/pGL4.11 and Mut-4.4-kb-pOV/pGL4.11. For transfection, 1.5  $\mu$ L of Lipofectamine 3000 reagent suspended in 50  $\mu$ L of Opti-MEM (Gibco, Carlsbad, CA) and 1  $\mu$ g of each pGL4.11 firefly DNA, 0.01  $\mu$ g of pGL4.74 (hRluc) renilla DNA (Promega, Madison, WA), and 2  $\mu$ L of p3000 reagent suspended in 50  $\mu$ L of Opti-MEM (~~Gibco~~) were mixed for 20 min at room temperature. 100  $\mu$ L per well of the mixture was added to each well of the 12-well cell culture plate.

### Luciferase reporter analysis

For the reporter analysis, the cell culture medium was removed, and 250  $\mu$ L of passive lysis buffer (Promega, Madison, WA), was added to each well of the 12-well cell culture plate. The plate was then stirred for 20 min for cell lysis, and the lysed cells were transferred to a 1.5 mL Eppendorf tube and centrifuged at 12000 rpm for 10 min at room temperature. 20  $\mu$ L of each lysate was transferred to a 96-well white micro plate (Nunc, Rochester, NY), and the luciferase activities were measured using a Centro LB 960 luminometer (Berthold, Oak Ridge, TN). The luciferase ratio for each vector was calculated as follows: (firefly luminescence) / (Renilla luminescence), and the relative luciferase ratio was calculated as follows: (mock/pGL4.11 luciferase ratio) / (Mut-4.4-kb-pOV/pGL4.11 luciferase ratio).

### Statistical analysis

The statistical analyses were conducted using GraphPad Prism statistical software (GraphPad Prism 5.03. software). Student's t-test was used for the comparison of the relative luciferase ratio of Mut-4.4-kb-pOV/pGL4.11 and mock/pGL4.11, and p-values less than 0.05 was considered to indicate statistical significance. Error bars denote the standard errors of the mean (SEM).

## RESULTS

## Isolation and *in vitro* culture of chicken oviduct epithelial cells

To obtain chicken oviduct epithelial cells (cOECs), we isolated oviduct tissue from egg-laying White Leghorn (WL) hens and analyzed the structure of the inner surface. The length of oviduct tissue separated from the infundibulum (INF) to the proximal magnum (PM) was approximately 36 cm (Figure 1A), and the inner surface of the magnum epithelium of the chicken oviduct tissue showed thick, anastomosing folds of the mucosa (Figure 1B). The magnum portion of a chicken oviduct tissue was subsequently separated and analyzed by SEM. As shown in Figure 1C, the magnum showed ciliated surface, and ciliated cells were observed in the culture plate after isolating the cells from oviduct tissue (Figure 1D). Through our isolation method, almost of the primary cOECs at passage 0 composed of colony-initiating cells (Figure 2A). The population of cOECs at passage 1 was heterogeneously composed of epithelial-like ciliated nonsecretory cells with a cobble stone shape and fibroblast-like cells (Figure 2B). From at passage 2, the population of epithelial-like ciliated nonsecretory cells continuously diminished, whereas the fibroblast-like cells were maintained at least fifth passages, and most of these cells showed secretory granules (Figure 2C). Furthermore, chromosomal karyotyping of the cultured cOECs showed normal chicken chromosome ( $2n=78$ ) (Figure 2D). Altogether, these results demonstrate the efficient isolation and short-term *in vitro* cultivation of the oviduct epithelial cells.

## Characterization of the *in vitro* cultured cOECs

To characterize the cultured cOECs, we selected a set of chicken oviduct-specific markers. The cDNA from the oviduct magnum tissue, DF-1, and the cOECs were amplified by RT-PCR using chicken oviduct and epithelial cell marker (Table 1). The analysis of chicken oviduct-specific markers revealed that ovalbumin mRNA expression was clearly detected in magnum tissue and the cOECs. However, estrogen receptor 1 mRNA, but not ovomucoid mRNA expression, was detected in all samples. The analysis with epithelial cell markers showed that occludin and E-cadherin mRNA expression were detected in the oviduct magnum tissue and cOECs, whereas cytokeratin 14 mRNA expression was detected in both DF-1 and cOECs but not in the oviduct magnum tissue. The RT-PCR results are summarized in Table 2. Based on the RT-PCR results, cOECs were qualitatively and

서식 있음: 글꼴: 기움임꼴

서식 있음: 글꼴: 기움임꼴

서식 있음: 글꼴: 기움임꼴

quantitatively—characterized through immunofluorescence, western blot, and flow cytometry analysis. As shown in Figure 3, the ovalbumin protein was clearly detected in the cOECs but not in DF-1 by immunofluorescence (Figure 3A). This ovalbumin protein was also clearly detected in the cOECs and the oviduct magnum tissue but not in leg muscle tissue and DF-1 by western blot analysis (Figure 3B). In flow cytometry analysis, ovalbumin protein expression in stained DF-1 was hardly detected (6.28%), in unstained DF-1 (0.10%), and in isotype control DF-1 (0.37%). In addition, only 0.11% and 0.18% were detected in unstained and in isotype control cOECs, whereas 79.40% of the stained cOECs showed positive detection of ovalbumin protein (Figure 3C). Taken together, the characterization results clearly demonstrate that ovalbumin protein, chicken oviduct-specific marker, was expressed in *in vitro* cultured cOECs.

#### **In vitro validation of the activity of the constructed chicken ovalbumin promoter**

To validate the activity of the ovalbumin promoter in the cOECs, we constructed a reporter vector cloned with a 4.4-kb ovalbumin promoter with an approximately 1-kb deletion between the estrogen response elements (EREs) and the 2.8-kb ovalbumin promoter, and this vector was denoted Mut-4.4-kb-pOV/pGL4.11 (Figure 4A). The Mut-4.4-kb-pOV/pGL4.11 and mock/pGL4.11 vectors were transfected into the cOECs and DF-1, respectively, and the ovalbumin promoter activity in each cell was analyzed through a luciferase assay. The comparative luciferase analysis results showed that Mut-4.4-kb-pOV/pGL4.11 resulted in a 7.1-fold ( $p < 0.001$ ) higher relative luciferase ratio in the cOECs than the mock/pGL4.11 vector. However, the variation in the relative luciferase ratio between the Mut-4.4-kb-pOV/pGL4.11 and mock/pGL4.11 vectors was decreased by 2.0-fold ( $p < 0.001$ ) in DF-1 (Figure 4B). We thus verified that the constructed ovalbumin promoter exhibited specific promoter activity in the cultured cOECs. Collectively, these results demonstrate the successful preparation of cOECs from the area between the infundibulum and magnum in chicken oviduct tissue, the characterization of the cOECs using ovalbumin as a marker of the chicken oviduct, and the analysis of the expression and regulation of specific genes by the ovalbumin promoter in these cells.

서식 있음: 글꼴: 기움임꼴

서식 있음: 글꼴: 기움임꼴

## DISCUSSION

In the present study, we established a protocol for the isolation and characterization of chicken oviduct epithelial cells (cOECs) and showed that these cOECs can be used for the evaluation of chicken ovalbumin promoter activity. Many transgenic birds have been generated in recent years, and previous studies have shown that lentivirus-mediated transgenesis achieves a high level of productivity in chickens [2] and quail [16].

Cloning of the lentivirus vector with chicken ovalbumin promoter allows efficient expression of a transgene in the chicken oviduct, leading to the development of ovalbumin promoters of different size, and the expression level of the transgene depends on the type of ovalbumin promoters. The 1.35-to-2.8-kb ovalbumin promoter consisting of steroid-dependent response elements (SDREs) and negative response elements (NREs) induces tissue-specific expression, but the resulting expression level is considered low for industrial use [9, 17]. However, insertion of the 673 or 675 bp of estrogen response elements (EREs) in front of the 5'-flanking region of the 2.8-kb ovalbumin promoter results in significantly enhanced expression level of the transgene [5, 8]. Based on these findings, it was then necessary to evaluate the developed ovalbumin promoters *in vitro* prior to the generation of transgenic chickens, and thus, the establishment of a protocol for cOECs is important, even though the culturing of cOECs is in challenging [18, 19].

cOECs differentiate into ciliated nonsecretory cells, secretory cells, and tubular gland cells [13, 20]. As indicated by our results, the isolated oviduct cells at passage 0 were populated by cells with similar morphological shapes, which are denoted colony-initiating cells and also considered progenitor cells. At passage 1, the population heterogeneously consisted of epithelial-like ciliated nonsecretory cells with a cobblestone shape and fibroblast-like cells. Starting at passage 2, the number of epithelial-like ciliated cells decreased until these cells were hardly observed under a microscope, but the fibroblast-like cells were stably maintained at least until passage 5. We also observed secretory granules in these fibroblast-like cells, which demonstrates that the cells are likely mature tubular gland cells [21].

서식 있음: 글꼴: 기움임꼴

300 An optimal method for the isolation of cOECs has been reported, and the results indicate that  
 301 epithelial-like cells were retained from the infundibulum of the chicken oviduct in keratinocyte  
 302 medium [14]. The different morphologies of the oviduct cells isolated from the infundibulum, distal  
 303 magnum, and proximal magnum were observed, and these cells populations consisted of colony-  
 304 initiating cells, epithelial cells showing cobblestone shape, and fibroblast-like cells, respectively [15].  
 305 In our preliminary experiments, we attempted to culture the isolated oviduct cells in Dulbecco's  
 306 modified Eagle's medium (DMEM) supplemented with fetal bovine serum (FBS), but the resulting  
 307 cell populations consisted exclusively of fibroblast cells did not contain secretory granules, which  
 308 differ from the cell populations obtained in keratinocyte medium. Additionally, we isolated the  
 309 oviduct cells, not dividing into each infundibulum, distal magnum, and proximal magnum, and  
 310 the morphological changes in the cells populations were observed mostly according to cells passages.

서식 있음: 글꼴 색: 빨강

311 After culturing, we investigated suitable two types of markers for characterizing the cOECs.  
 312 Among three oviduct and three epithelial markers, the primer pairs for estrogen receptor 1 (ESR1) and  
 313 E-cadherin were firstly designed in this study, but the primers used for ovomucoid, ovalbumin,  
 314 occludin, cytokeratin 14, and  $\beta$ -actin were based on those designed in previous studies [15, 22, 23].  
 315 According to our RT-PCR results, the ovalbumin, occludin, and E-cadherin proteins can be used as  
 316 oviduct and epithelial markers, and subsequent immunofluorescence, western blot, and flow  
 317 cytometry analysis, clearly demonstrated that the cOECs were cells that expressed ovalbumin protein.

318 We finally demonstrated that the mutated 4.4-kb chicken ovalbumin promoter exhibited 7.1-fold  
 319 higher activity than the negative control. Based on these results, we will utilize the cOECs for *in vitro*  
 320 validation of the chicken ovalbumin promoter. In summary, this study aimed to isolate and  
 321 characterize cOECs and to investigate the activity of the ovalbumin promoter in these cells. The  
 322 results revealed that the oviduct cells expressing the ovalbumin protein could be successfully isolated  
 323 using our method, and their characterization clearly showed that the cells exhibited an ovalbumin  
 324 marker. These results can strongly aid the development of advanced chicken promoter for the  
 325 production of recombinant proteins and ultimately the generation of transgenic hens.

서식 있음: 글꼴: 기움임꼴

326

## CONFLICT OF INTEREST

The authors declare that there is no conflict of interest regarding the publication of this paper.

## ACKNOWLEDGMENTS

This work was carried out with the support of “Animal Science & Technology Development (Project No. PJ01260301)” from the Rural Development Administration of the Republic of Korea.

## REFERENCES

1. Ivarie R. Competitive bioreactor hens on the horizon. Trends Biotechnol 2006; Mar;24(3):99-101. <https://doi.org/10.1016/j.tibtech.2006.01.004>
2. McGrew MJ, Sherman A, Ellard FM, et al. Efficient production of germline transgenic chickens using lentiviral vectors. EMBO Rep 2004;5:728-33. <https://doi.org/10.1038/sj.embor.7400171>
3. Lee J, Ma J, Lee K. Direct delivery of adenoviral CRISPR/Cas9 vector into the blastoderm for generation of targeted gene knockout in quail. Proc Natl Acad Sci U S A 2019;116:13288-92. <https://doi.org/10.1073/pnas.1903230116>
4. Part TS, Lee HG, Moon JK, et al. Deposition of bioactive human epidermal growth factor in the egg white of transgenic hens using an oviduct-specific minisynthetic promoter. FASEB J 2015;29:2386-96. <https://doi.org/10.1096/fj.14-264739>
5. Cao D, Wu H, Li Q, et al. Expression of recombinant human lysozyme in egg whites of transgenic hens. PLoS One 2015;10:e0118626. <https://doi.org/10.1371/journal.pone.0118626>
6. Liu T, Wu H, Cao D, et al. Oviduct-specific expression of human neutrophil defensin 4 in lentivirally generated transgenic chickens. PLoS One 2015;10:e0127922. <https://doi.org/10.1371/journal.pone.0127922>
7. Dougherty DC, Sanders MM. Estrogen action: revitalization of the chick oviduct model. Trends Endocrinol Metab 2005;16:414-9. <https://doi.org/10.1016/j.tem.2005.09.001>
8. Lillico SG, Sherman A, McGrew MJ, et al. Oviduct-specific expression of two therapeutic proteins in transgenic hens. Proc Natl Acad Sci U S A 2007;104:1771-6. <https://doi.org/10.1073/pnas.0610401104>
9. Kwon SC, Choi JW, Jang H-J, et al. Production of biofunctional recombinant human interleukin 1 receptor antagonist (rhIL1RN) from transgenic quail egg white. Biol Reprod 2010;82:1057-64.

메모 [AJAS7]: 1-4 Journal

서식 있음: 글꼴: Times New Roman, 11 pt

서식 있음: 글꼴: Times New Roman, 11 pt

서식 있음: 목록 단락, 번호 매기기 + 수준:1 + 번호 스타일: 1, 2, 3, ... + 시작 번호: 1 + 맞춤: 왼쪽 + 맞춤 위치: 0 cm + 들여쓰기 위치: 0.63 cm

변경된 필드 코드

서식 있음: 하이퍼링크, 글꼴: Times New Roman, 11 pt

변경된 필드 코드

변경된 필드 코드

변경된 필드 코드

변경된 필드 코드

변경된 필드 코드

변경된 필드 코드

변경된 필드 코드

- 360 <https://doi.org/10.1095/biolreprod.109.081687>
- 361 10. Herron LR, Pridans C, Turnbull ML, et al. A chicken bioreactor for efficient production of  
362 functional cytokines. BMC Biotechnol 2018;18:82. <https://doi.org/10.1186/s12896-018-0495-1>
- 363 11. Sanders MM, McKnight GS. Chicken egg white genes: multihormonal regulation in a primary  
364 cell culture system. Endocrinology 1985;116:398-405. <https://doi.org/10.1210/endo-116-1-398>
- 365 12. Kim SH, Choi JY, Shin C-R, et al. Induction of apoptosis in chicken oviduct cells by C2-ceramide.  
366 Mol Cells 2005;19:185-90.
- 367 13. Jung JG, Park TS, Kim JN, et al. Characterization and application of oviductal epithelial cells in  
368 vitro in Gallus domesticus. Biol Reprod 2011;85:798-807.  
369 <https://doi.org/10.1095/biolreprod.111.092023>
- 370 14. Kasperczyk K, Bajek A, Joachimiak R, et al. In vitro optimization of the Gallus domesticus  
371 oviduct epithelial cells culture. Theriogenology 2012;77:1834-45.  
372 <https://doi.org/10.1016/j.theriogenology.2011.12.029>
- 373 15. Stadnicka K, Sławińska A, Dunisławska A, Pain B, Bednarczyk M. Molecular signatures of  
374 epithelial oviduct cells of a laying hen (Gallus gallus domesticus) and quail (Coturnix japonica).  
375 BMC Dev Biol 2018;18:9. <https://doi.org/10.1186/s12861-018-0168-2>
- 376 16. Scott BB, Lois C. Generation of tissue-specific transgenic birds with lentiviral vectors. Proc Natl  
377 Acad Sci U S A 2005;102:16443-7. <https://doi.org/10.1073/pnas.0508437102>
- 378 17. Byun SJ, Kim SW, Kim K-W, et al. Oviduct-specific enhanced green fluorescence protein  
379 expression in transgenic chickens. Biosci Biotechnol Biochem 2011;75:646-9.  
380 <https://doi.org/10.1271/bbb.100721>
- 381 18. Dierich A, Gaub MP, LePennec JP, Astinotti D, Chambon P. Cell-specificity of the chicken  
382 ovalbumin and conalbumin promoters. EMBO J 1987;6:2305-12. <https://doi.org/10.1002/j.1460-2075.1987.tb02505.x>
- 383 19. Ebers KL, Zhang CY, Zhang MZ, Bailey RH, Zhang S. Transcriptional profiling avian beta-  
384 defensins in chicken oviduct epithelial cells before and after infection with Salmonella enterica  
385 serovar Enteritidis. BMC Microbiol 2009;9:153. <https://doi.org/10.1186/1471-2180-9-153>
- 386 20. Kohler PO, Grimley PM, O'Malley BW. Estrogen-induced cytodifferentiation of the ovalbumin-  
387 secreting glands of the chick oviduct. J Cell Biol 1969;40:8-27. <https://doi.org/10.1083/jcb.40.1.8>
- 388 21. Palmiter RD. Interaction of estrogen, progesterone, and testosterone in the regulation of protein  
389 synthesis in chick oviduct. Biochemistry 1971;10:4399-403. <https://doi.org/10.1021/bi00800a008>
- 390 22. Sevane N, Bialade F, Velasco S, et al. Dietary inulin supplementation modifies significantly the  
391 liver transcriptomic profile of broiler chickens. PLoS One 2014;9:e98942.  
392 <https://doi.org/10.1371/journal.pone.0098942>
- 393 23. Couteaudier M, Trapp-Fragnet L, Auger N, et al. Derivation of keratinocytes from chicken  
394

변경된 필드 코드

서식 있음: 목록 단락, 간격 앞: 0 pt, 단락 뒤: 0 pt, 줄 간격: 1.5줄, 무늬: 지우기

변경된 필드 코드

서식 있음: 글꼴: (영어) Times New Roman, 11 pt, 글꼴 색: 텍스트 1

서식 있음: 글꼴 색: 텍스트 1

서식 있음: 글꼴: (영어) Times New Roman, 11 pt, 글꼴 색: 텍스트 1

변경된 필드 코드

서식 있음: 글꼴 색: 텍스트 1

embryonic stem cells: establishment and characterization of differentiated proliferative cell populations. *Stem Cell Res* 2015;14:224-37. <https://doi.org/10.1016/j.scr.2015.01.002>

2. McGrew MJ, Sherman A, Ellard FM, Lillico SG, Gilhooley HJ, Kingsman AJ, Mitrophanous KA, Sang H. Efficient production of germline transgenic chickens using lentiviral vectors. *EMBO Rep* 2004 Jul;5(7):728-33.

3. Lee J, Ma J, Lee K. Direct delivery of adenoviral CRISPR/Cas9 vector into the blastoderm for generation of targeted gene knockout in quail. *Proc Natl Acad Sci U S A* 2019 Jul 2;116(27):13288-92.

4. Park TS, Lee HG, Moon JK, Lee HJ, Yoon JW, Yun BN, Kang SC, Kim J, Kim H, Han JY, Han BK. Deposition of bioactive human epidermal growth factor in the egg white of transgenic hens using an oviduct specific minisynthetic promoter. *FASEB J* 2015 Jun;29(6):2386-96.

5. Cao D, Wu H, Li Q, Sun Y, Liu T, Fei J, Zhao Y, Wu S, Hu X, Li N. Expression of recombinant human lysozyme in egg whites of transgenic hens. *PLoS One* 2015 Feb 23;10(2):e0118626.

6. Liu T, Wu H, Cao D, Li Q, Zhang Y, Li N, Hu X. Oviduct specific expression of human neutrophil defensin 4 in lentivirally generated transgenic chickens. *PLoS One* 2015 May 28;10(5):e0127922.

7. Dougherty DC, Sander MM. Estrogen action: revitalization of the chick oviduct model. *Trends Endocrinol Metab* 2005 Nov;16(9):414-9.

8. Lillico SG, Sherman A, McGrew MJ, Robertson CD, Smith J, Haslam C, Barnard P, Radcliffe PA, Mitrophanous KA, Elliot EA, Sang HM. Oviduct specific expression of two therapeutic proteins in transgenic hens. *Proc Natl Acad Sci U S A* 2007 Feb 6;104(6):1771-6.

9. Kwon SC, Choi JW, Jang HJ, Shin SS, Lee SK, Park TS, Choi IY, Lee GS, Song G, Han JY. Production of biofunctional recombinant human interleukin 1 receptor antagonist (rhIL1RN) from transgenic quail egg white. *Biol Reprod* 2010 Jun;82(6):1057-64.

10. Herron LR, Pridans C, Turnbull ML, Smith N, Lillico S, Sherman A, Gilhooley HJ, Wear M, Kurian D, Papadakis G, Digard P, Hume DA, Gill AC, Sang HM. A chicken bioreactor for efficient production of functional cytokines. *BMC Biotechnol* 2018 Dec 29;18(1):82.

11. Sanders MM, McKnight GS. Chicken egg white genes: multihormonal regulation in a primary cell culture system. *Endocrinology* 1985 Jan;116(1):398-405.

12. Kim SH, Choi JY, Shin CR, Sub EJ, Kim SY, Choi KD, Jeon I, Han JY, Kim TY, Kim SH. Induction of apoptosis in chicken oviduct epithelial cells by C2 ceramide. *Mol Cells*

서식 있음: 목록 단락, 번호 매기기 + 수준:1 + 번호 스타일: 1, 2, 3, ... + 시작 번호: 1 + 맞춤: 왼쪽 + 맞춤 위치: 0 cm + 들여쓰기 위치: 0.63 cm

메모 [AJAS8]: 1-4 Journal

서식 있음: 목록 단락, 들여쓰기: 왼쪽: 0 cm, 첫 줄: 0 글자, 줄 간격: 1줄

메모 [AJAS9]: 1-4 Journal

메모 [AJAS10]: 1-4 Journal

메모 [AJAS11]: 1-4 Journal

메모 [AJAS12]: 1-4 Journal

메모 [AJAS13]: 1-4 Journal

메모 [AJAS14]: 1-4 Journal

메모 [AJAS15]: 1-4 Journal

메모 [AJAS16]: 1-4 Journal

메모 [AJAS17]: 1-4 Journal

메모 [AJAS18]: 1-4 Journal



2005;19(2):185-90.

13. Jung JG, Park TS, Kim JN, Han BK, Lee SD, Song G, Han JY. Characterization and application of oviductal epithelial cells in vitro in Gallus domesticus. Biol Reprod 2011 Oct;85(4):798-807.

14. Kaspereyzyk K, Bajek A, Joachimiak R, Walasik K, Marszalek A, Drewa T, Bednarczyk M. In vitro optimization of the Gallus domesticus oviduct epithelial cells culture. Theriogenology 2012 Jun;77(9):1834-45.

15. Stadnieka K, Slawinska A, Dunislawska A, Pain B, Bednarczyk M. Molecular signatures of epithelial oviduct cells of a laying hen (Gallus gallus domesticus) and quail (Coturnix japonica). BMC Dev Biol 2018 Apr 4;18(1):9.

16. Scott BB, Lois C. Generation of tissue-specific transgenic birds with lentiviral vectors. Proc Natl Acad Sci U S A 2005 Nov 8;102(45):16443-7.

17. Byun SJ, Kim SW, Kim KW, Kim JS, Hwang IS, Chung HK, Kan IS, Jeon IS, Chang WK, Park SB, Yoo JG. Oviduct-specific enhanced green fluorescence protein expression in transgenic chickens. Biosci Biotechnol Biochem 2011;75(4):646-9.

18. Dierich A, Gaub MP, LePenrec JP, Astinotti D, Chambon P. Cell specificity of the chicken ovalbumin and conalbumin promoters. EMBO J 1987 Aug;6(8):2305-12.

19. Ebers KL, Zhang CY, Zhang MZ, Bailey RH, Zhang S. Transcriptional profiling avian beta defensins in chicken oviduct epithelial cells before and after infection with Salmonella enterica serovar Enteritidis. BMC Microbiol 2009 Jul 30;9:153.

20. Kohler PO, Grimley PM, O'Malley BW. Estrogen induced cytodifferentiation of the ovalbumin-secreting glands of the chick oviduct. J Cell Biol 1969 Jan;40(1):8-27.

21. Palmiter RD. Interaction of estrogen, progesterone, and testosterone in the regulation of protein synthesis in chick oviduct. Biochemistry 1971 Nov 23;10(24):4399-403.

22. Sevane N, Bialade F, Velasco S, Rebole A, Rodriguez ML, Ortiz LT, Canon J, Dunner S. Dietary inulin supplementation modifies significantly the liver transcriptomic profile of broiler chickens. PLoS One 2014 Jun 10;9(6):e98942.

23. Couteaudier M, Trapp Fagnet L, Auger N, Courvoisier K, Pain B, Denesvre C, Vautherot JF. Derivation of keratinocytes from chicken embryonic stem cells: establishment and characterization of differentiated proliferative cell populations. Stem Cell Res 2015 Mar; 14(2):224-37.

메모 [AJAS19]: 1-4 Journal

메모 [AJAS20]: 1-4 Journal

메모 [AJAS21]: 1-4 Journal

메모 [AJAS22]: 1-4 Journal

메모 [AJAS23]: 1-4 Journal

메모 [AJAS24]: 1-4 Journal

메모 [AJAS25]: 1-4 Journal

메모 [AJAS26]: 1-4 Journal

메모 [AJAS27]: 1-4 Journal

메모 [AJAS28]: 1-4 Journal

메모 [AJAS29]: 1-4 Journal

서식 있음: 줄 간격: 2줄

463 **Table 1.** Primer Sequences for PCR amplification of the specific genes.

Gene	Primer Sequences	Size (bp)	References
Ovalbumin	F: CGTTCAGCCTTGCCAGTAGA	60	Stadnicka et al. [4615]
	R: AGTATTCTGGCAGGATTGGGT		
Ovomucoid	F: TATGCCAACACGACAAGCGA	133	Stadnicka et al. [4615]
	R: CCCCTGCTCTACTTTGTGG		
Estrogen receptor 1	F: ACCACTATGGGGTCTGGTCT	197	NCBI
	R: TCTGCGGTCTTCCGGATTC		
Occludin	F: GAGGAGTGGGTGAAGAACGTG	150	Stadnicka et al. [4615]
	R: GGTGCCCCGAGGGGTAGTA		
Cytokeratin 14	F: GTGGATGCACTGACGGATGA	229	Couteaudier et al. [23]
	R: GCAGTGCTTCGAACTTGCTC		
E-cadherin	F: TGGATGGTGCCTTCAGCATT	215	NCBI
	R: GATAGGGGGCACGAAGACAG		
Beta actin	F: CACAGATCATGTTTGAGACCTT	101	Sevane et al. [22]
	R: CATCACAATACCAGTGGTACG		

464 F: Forward primer, R: Reverse primer

**메모 [AJAS30]: Table**

- Tables must be cell-based in Microsoft Word.
- Do not include graphic objects, images, colored text, or shading patterns.
- Do not use Tab key.

서식 있음: 글꼴: Times New Roman

서식 있음: 글꼴: Times New Roman

서식 있음: 글꼴: Times New Roman

서식 있음: 글꼴: (한글) + 본문 한글(맑은 고딕), 글꼴 색: 자동, (한글) 한국어

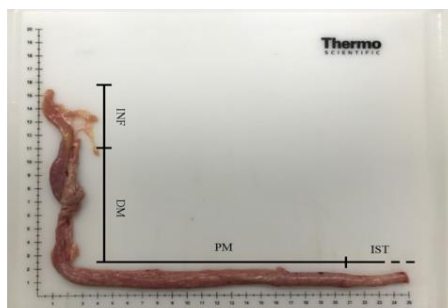
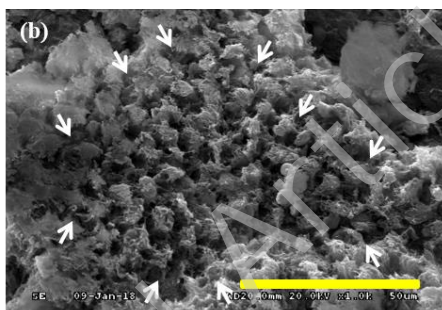
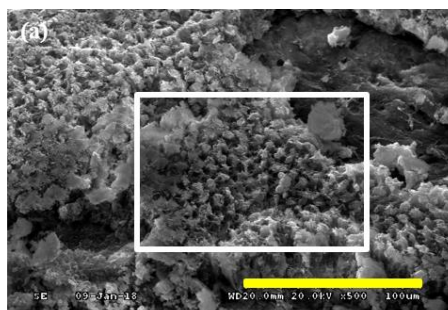
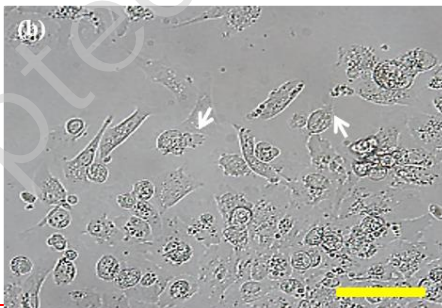
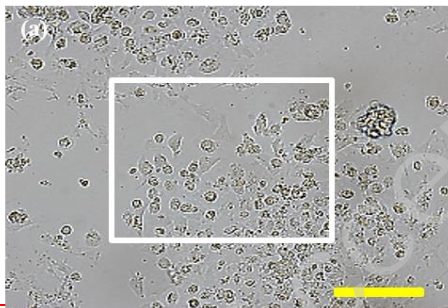
465 **Table 2.** mRNA expression of the specific genes in oviduct magnum, DF-1, and the cOECs.

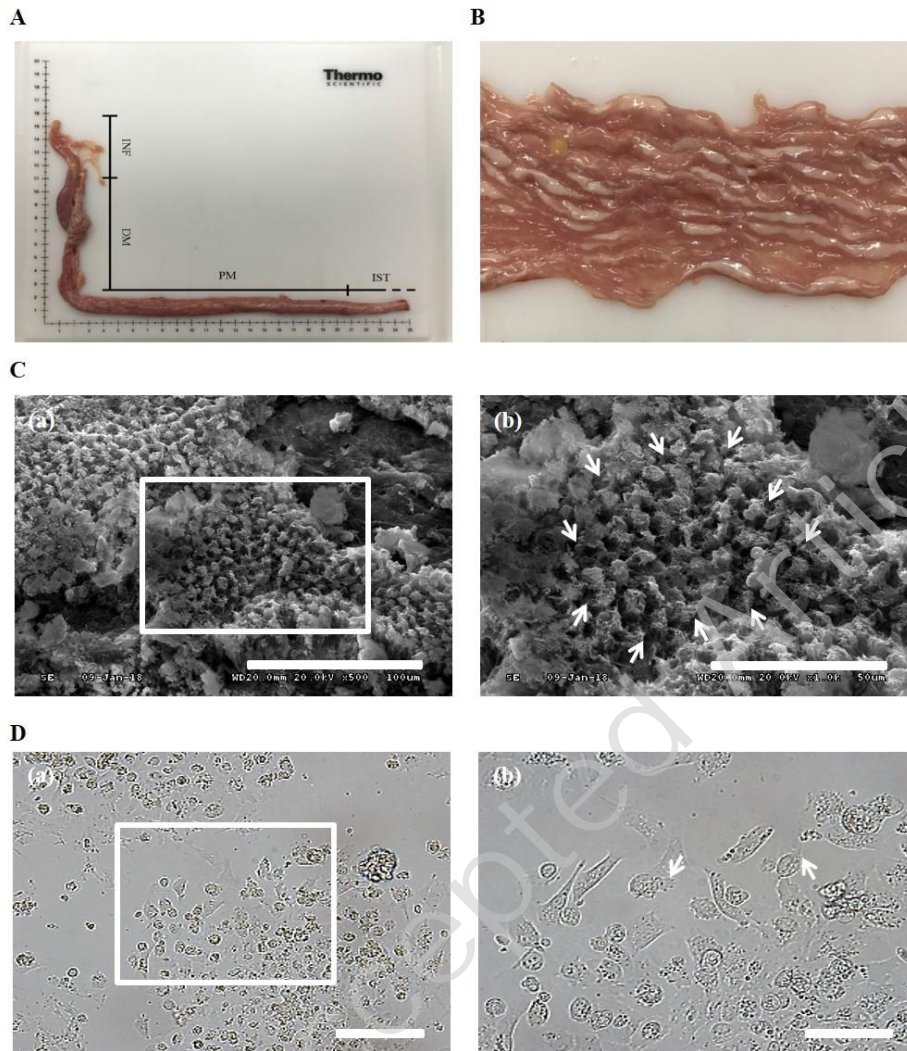
Type	Genes	Magnum	DF-1	cOECs
Oviduct marker	Ovalbumin	+	ND	+
	Ovomucoid	ND	ND	ND
	Estrogen receptor 1	+	+	+
Epithelial marker	Occludin	+	ND	+
	Cytokeratin 14	ND	+	+
	E-cadherin	+	ND	+
Control	Beta actin	+	+	+

466 ND: Not Determined

**메모 [AJAS31]: Table**

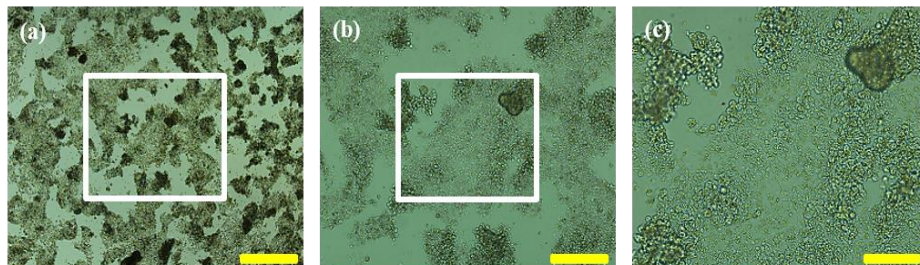
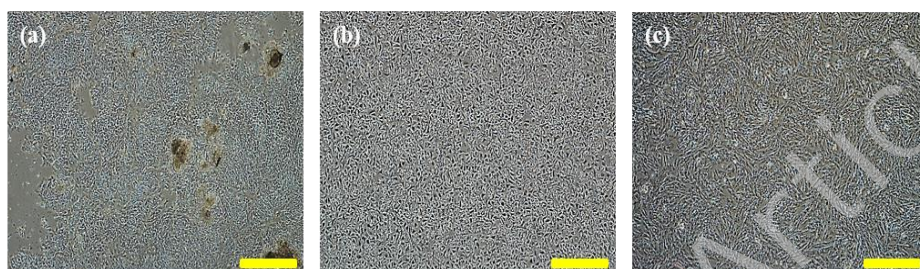
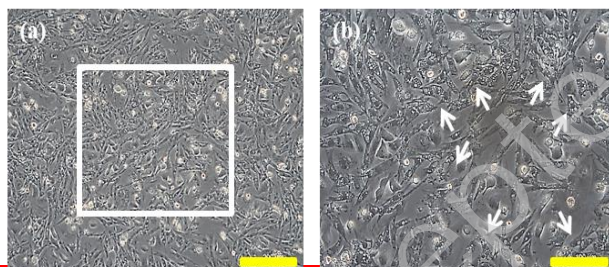
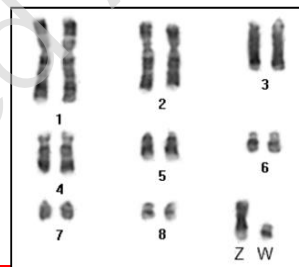
- Tables must be cell-based in Microsoft Word.
- Do not include graphic objects, images, colored text, or shading patterns.
- Do not use Tab key.

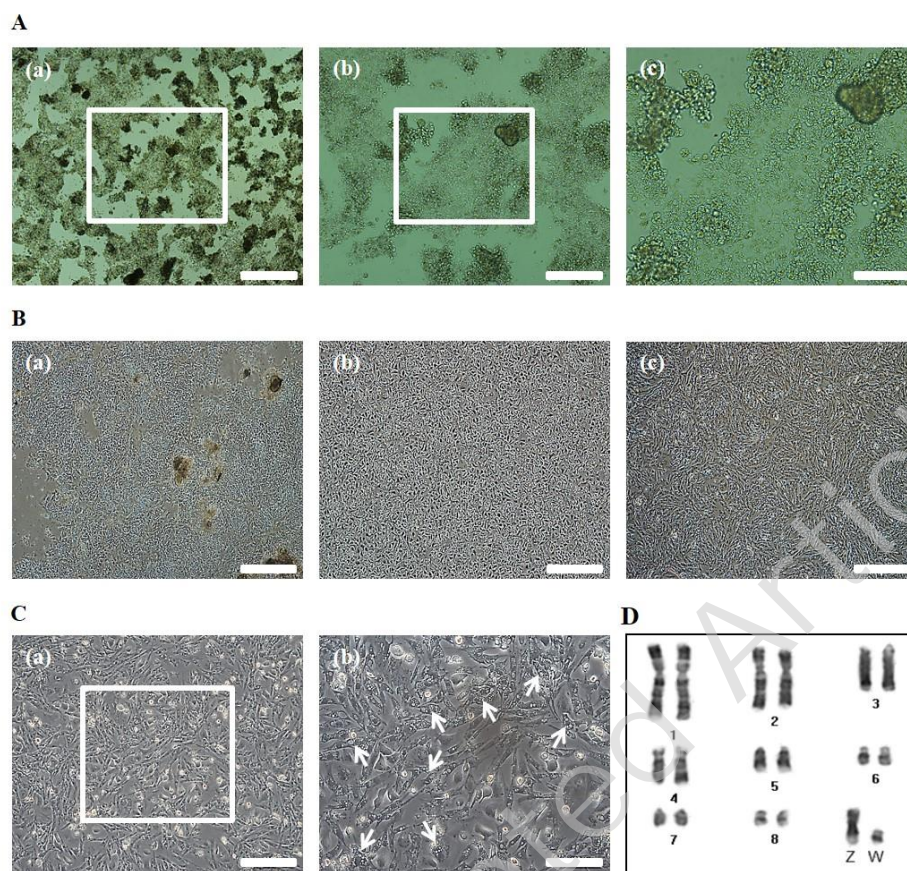
**A****B****C****D**



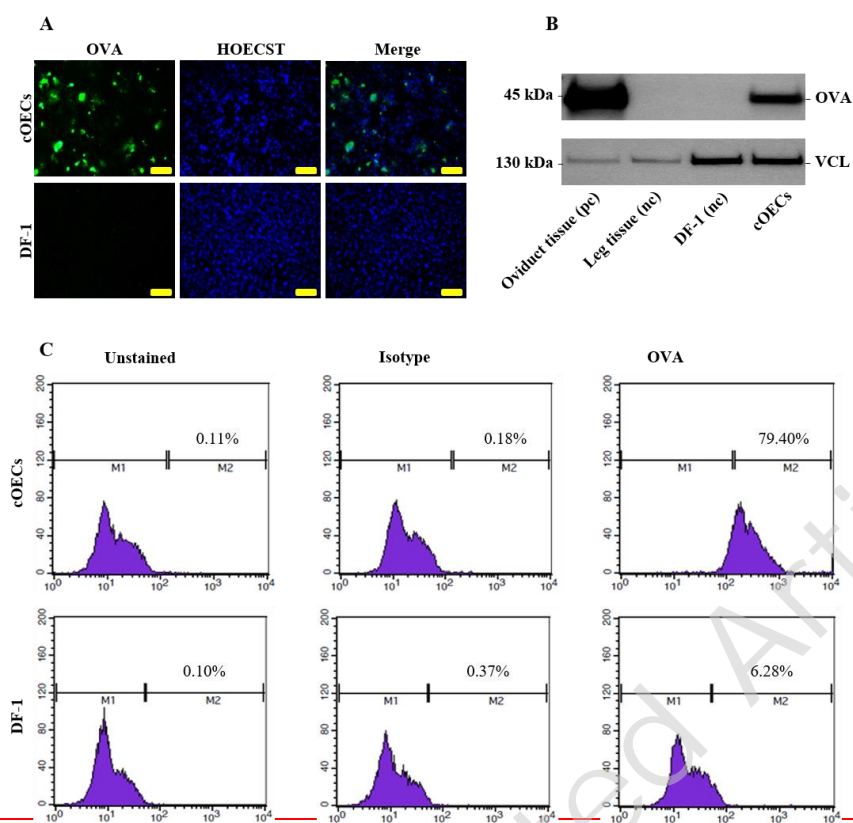
**Figure 1.** Structure analysis of the inner surface of isolated chicken oviduct tissue. (A): Total length of the chicken oviduct from the infundibulum to the edge of the magnum section, Abbreviation: INF, Infundibulum; DM, Distal magnum; PM, Proximal magnum; and IST, Isthmus. (B): Inner surface of chicken oviduct magnum. (C): Scanning electron microscopy (SEM) images of the magnum epithelium layer of chicken oviduct tissue. Scale bar: 100  $\mu\text{m}$  (a) and 50  $\mu\text{m}$  (b). The white arrows indicate the portion of ciliated surface. (D): Verification of the cilia of isolated oviduct cells. Scale bars: 200  $\mu\text{m}$  (a) and 100  $\mu\text{m}$  (b). The white arrows indicate cilia of the nonsecretory cells with a cobblestone shape.



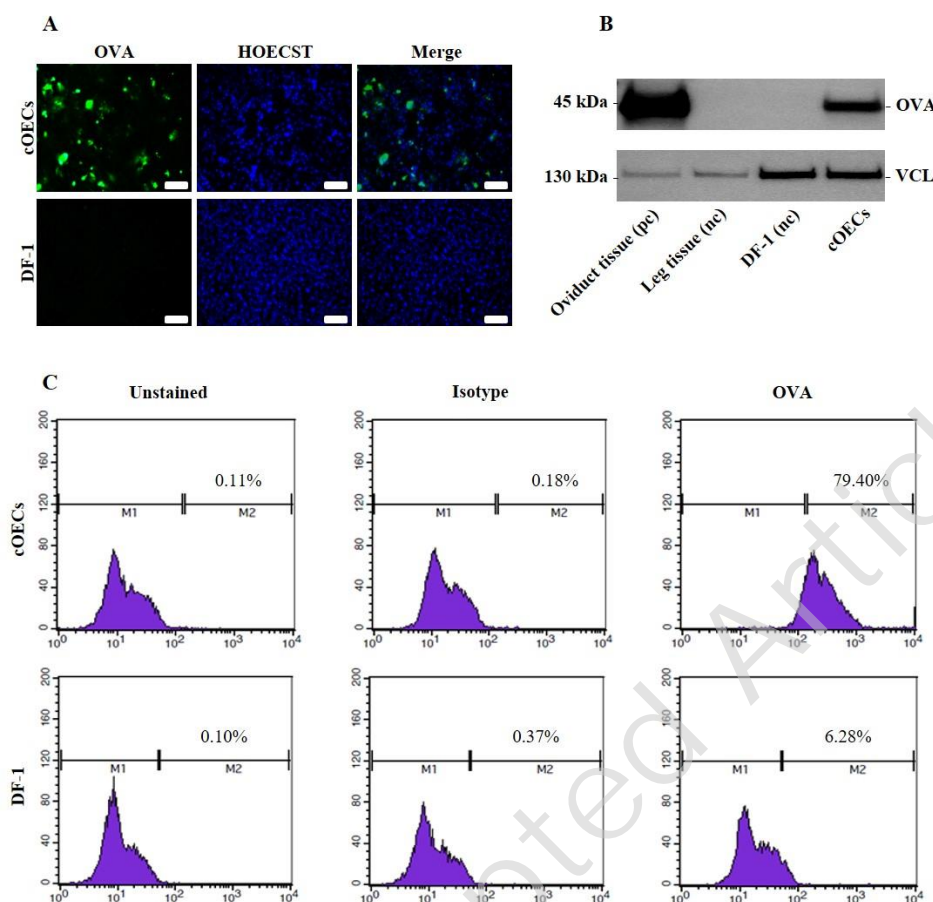
**A****B****C****D**



**Figure 2.** Morphological analysis of the isolated chicken oviduct cells. (A): Isolated chicken oviduct cells at passage 0, Scale bars: 500 μm (a), 200 μm (b), and 100 μm (c). (B): Morphological change of the cell population at passage 0 (a), 1 (b), and 2 (c). Scale bars: 500 μm. (C): Fibroblast-like cells with secretory granules at passage 2. Scale bars: 200 μm (a) and 100 μm (b). The white arrows indicate the portion of fibroblast-like cells with secretory granules. (D): Chromosomal karyotyping of cultured chicken oviduct epithelial cells. The chromosomes for sex chromosomes (Z and W) and macrochromosomes (chromosomes 1 to 8) were banded by Giemsa staining.

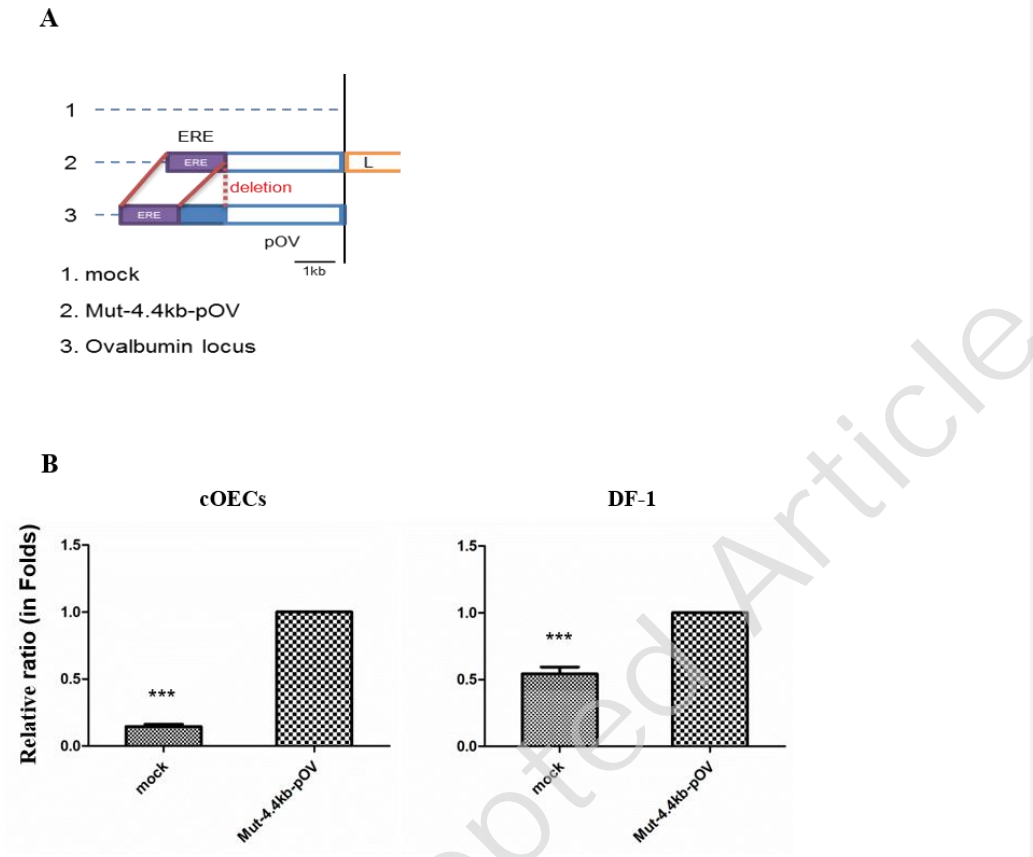






**Figure 3.** Characterization of the isolated chicken oviduct epithelial cells. (A): Ovalbumin (OVA) protein expression in the oviduct epithelial cells was detected by immunofluorescence analysis. After signal development, the cells were counterstained with Hoechst 33258. Scale bars: 100  $\mu$ m. (B): Western blot analysis of oviduct epithelial cells. The results for chicken oviduct magnum as a positive control (pc), chicken leg muscle and DF-1 as a negative control (nc) are presented. Ovalbumin (OVA) and vinculin (VCL) proteins were used as oviduct-specific markers and loading controls. (C): Flow cytometry analysis of the percentage of ovalbumin positive cells in cOECs and DF-1. The cells were stained with an anti-ovalbumin antibody (OVA), stained with isotype control antibody (isotype) or not stained with any antibody (unstained). The unstained and isotype groups were used as negative controls, and fibroblast cells (nc) stained with ovalbumin antibody (OVA) were also

included in the analysis.



**Figure 4.** *In vitro* validation of the chicken ovalbumin promoter in the isolated chicken oviduct epithelial cells. (A): Diagram of the reporter vector cloned with the mutated 4.4-kb ovalbumin promoter with a 1-kb deletion between the estrogen response elements (EREs) region and the 2.8-kb promoter. (B): Relative luciferase ratio in chicken fibroblast cells and isolated cOECs. The data are presented relative to the values obtained for the Mut-4.4-kb-pOV group. The luciferase ratio for each vector was calculated as follows: (firefly luminescence) / (Renilla luminescence), and the relative luciferase ratio was calculated as follows: (mock/pGL4.11 luciferase ratio) / (Mut-4.4-kb-pOV/pGL4.11 luciferase ratio). The error bars indicate the means  $\pm$  SEM (n = 3). \*\*\* p<0.001 compared with the control (Mut-4.4-kb-pOV group).

서식 있음: 글꼴: 기움임꼴