

# North Shore Elliott Bay Cowl



Designed by Shannon Thomas



**Designed By** Shannon Thomas

**Skill Level:**  
Intermediate

**Size:**  
9" x 32" circumference

**Materials:**  
Cascade Yarns® North Shore  
100% Acrylic  
100 g (3.5 oz) / 220 yd (200 m)  
2 skeins in #24 (Cherry)  
US 7 (4.5 mm) circular knitting needles  
Stitch markers  
Yarn needle

**Gauge:**  
20 sts x 24 rnds = 4" (10 cm) in Elliott Bay Pattern St



**Abbreviations:**

- BO = Bind Off
- CO = Cast On
- K = Knit
- P = Purl
- PM = Place Marker
- Rnd(s) = Round(s)
- St(s) = Stitch(es)

**Note:** Place a st marker after each 11 sts for each pattern repeat.

**Elliott Bay Stitch Pattern** (Multiple of 11 sts):

- Rnd 1: \*[P1, K10]; repeat from \* to end.
- Rnd 2: \*[P2, K9]; repeat from \* to end.
- Rnd 3: \*[P3, K8]; repeat from \* to end.
- Rnd 4: \*[P4, K7]; repeat from \* to end.
- Rnd 5: \*[P5, K6]; repeat from \* to end.
- Rnd 6: \*[P6, K5]; repeat from \* to end.
- Rnd 7: \*[P5, K6]; repeat from \* to end.
- Rnd 8: \*[P4, K7]; repeat from \* to end.
- Rnd 9: \*[P3, K8]; repeat from \* to end.
- Rnd 10: \*[P2, K9]; repeat from \* to end.
- Rnd 11: \*[P1, K10]; repeat from \* to end.
- Rnd 12: \*[K10, P1]; repeat from \* to end.
- Rnd 13: \*[K9, P2]; repeat from \* to end.

Rnd 14: \*[K8, P3]; repeat from \* to end.  
 Rnd 15: \*[K7, P4]; repeat from \* to end.  
 Rnd 16: \*[K6, P5]; repeat from \* to end.  
 Rnd 17: \*[K5, P6]; repeat from \* to end.  
 Rnd 18: \*[K6, P5]; repeat from \* to end.  
 Rnd 19: \*[K7, P4]; repeat from \* to end.  
 Rnd 20: \*[K8, P3]; repeat from \* to end.  
 Rnd 21: \*[K9, P2]; repeat from \* to end.  
 Rnd 22: \*[K10, P1]; repeat from \* to end.

**Begin Cowl:**

CO 176 sts. PM. Being careful not to twist your sts, join in the rnd.

Work [K2, P2] Rib pattern for 1½”.

Begin Elliott Bay Stitch pattern and work to 7½” from CO rnd.

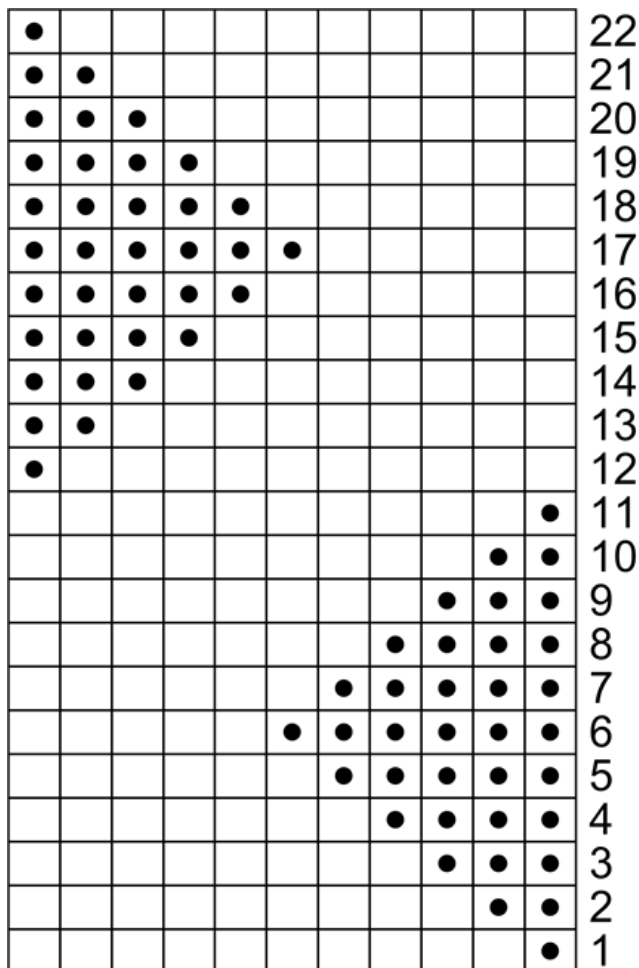
Work [K2, P2] Rib pattern for 1½”.

BO loosely in Rib pattern.

**Finishing:**

Weave in ends and block as necessary.

**Pattern Chart:**



Yarn	Stitches
□ White	□ k
	● p