



## **Why is the project contractor allowed to work overnight? Doesn't that violate the City's noise ordinance?**

The project, overall, is exempt from the City's noise ordinance. The ordinance states that it shall not apply to "work by City crews or City contractors in a right-of-way or utility easement when the department responsible for the work has determined that it is necessary to undertake the work between the hours of 9 p.m. and 7 a.m." This means that the contract for the CityLYNX Gold Line Phase 2 project states that the "Engineer" (Project Management staff) has the authority to make these determinations on night work. Staff is constantly in coordination with the contractor and other city departments to make the best determination with the least impact.

## **CONSTRUCTION IMPACTS**

### **When will construction occur in front of my residence/business?**

The contractor and City staff meet individually with residences and businesses that are directly impacted. The project team will continue to meet with property owners throughout construction to keep them informed.

### **Will pedestrian access be maintained in front of my residence/business?**

Yes. Typically pedestrian (sidewalk) access will be maintained to your residence/business. If conditions change and a sidewalk must be temporarily closed, pedestrian detour signage will be posted and nearby residences and businesses will be given notification.

### **Will any other improvements be made in conjunction with the Phase 2 project?**

Yes, several City departments have partnered with the project to accomplish utility upgrades and maintenance work. Throughout the duration of the project Charlotte-Mecklenburg Storm Water Services, Charlotte Water, and several other departments will conduct work in conjunction with or nearby Phase 2 construction.

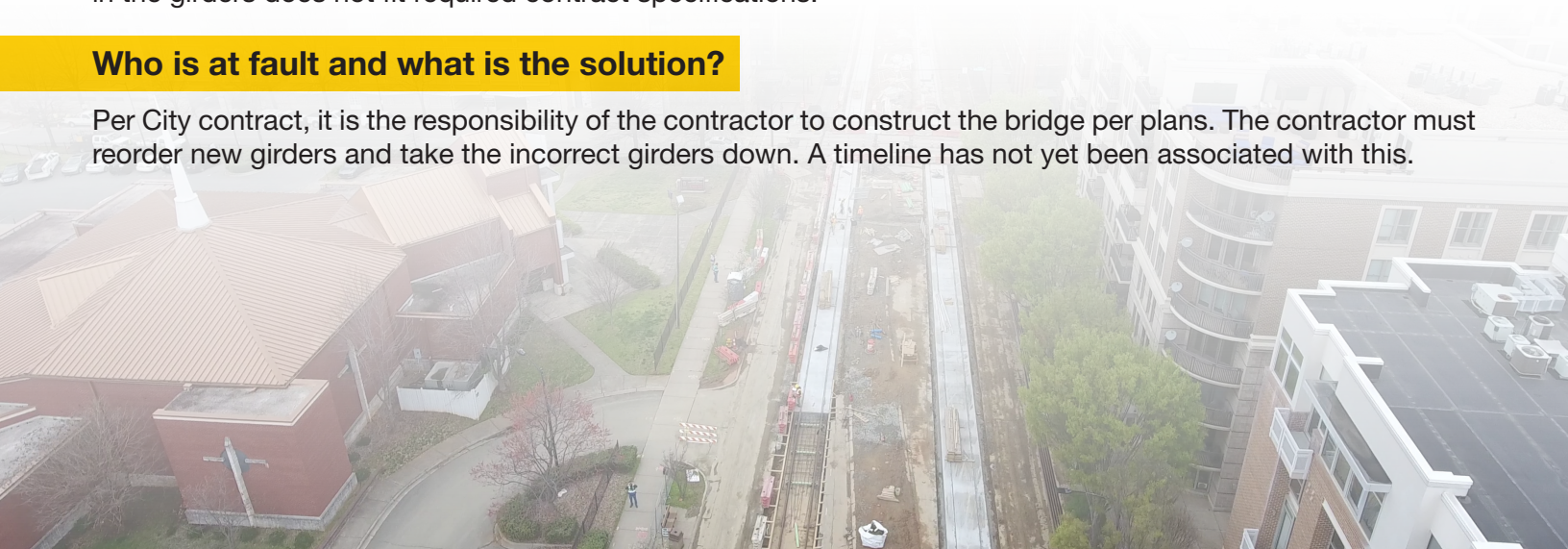
## **HAWTHORNE BRIDGE**

### **Why has construction stopped on the Hawthorne Lane Bridge?**

A problem with girder alignment was identified when the steel girders were placed over the eastbound lanes of Independence Boulevard (US74) around November 2018. Because the girders do not fit the specifications for alignment, work has stopped. The vertical alignment of the girders is not in tolerance. This means, the curvature in the girders does not fit required contract specifications.

### **Who is at fault and what is the solution?**

Per City contract, it is the responsibility of the contractor to construct the bridge per plans. The contractor must reorder new girders and take the incorrect girders down. A timeline has not yet been associated with this.





## How long will it take to fix?

Additional meetings are being held with the contractor to develop a final solution to determine impacts to the project schedule.

## What will this cost taxpayers?

At this time, we have not identified any additional costs to the project.

## How much will this delay the project overall?

The bridge will not be complete in March 2019. Staff is working with the contractor to resequence the work to minimize overall project delays.

## How do we plan to be efficient while this is resolved?

The City is working with the contractor to reschedule other components of the project. Work will continue along West Trade Street in Uptown and the Historic West End as well as on Hawthorne Lane in Elizabeth.

## Are the girders safe to drive under?

Absolutely. The girders are securely anchored to the bridge end bents. The alignment issue has to do with the elevation of the bridge not the structural integrity.

# VEHICLES

## What vehicles will be used on the Gold Line once Phase 2 is complete?

City Council has awarded a contract to Siemens for the procurement of six S70 hybrid modern streetcars. These vehicles are 85 feet long, 8' 8" wide, have 56 seats and can hold 255 passengers.



## How much do these vehicles cost?

The cost of the modern streetcars (approx. \$40 million) is included in the project budget of \$150 million. No additional financing is necessary for the vehicles. Costs related to start up and testing are also included in the \$150 million.

## Will the streetcar overhead catenary system (OCS) wires run through “the square”?

These modern streetcars have the capability to operate on batter (wire-free) from the Charlotte Transportation Center to Irwin Street. The vehicles will be able to successfully clear the intersection of Trade and Tryon streets (aka “the square”) without the use of OCS wires.



## Do you already know what the vehicles will look like? What will happen to the old ones?

The current Gomaco replica streetcars will be retired and sold. The Siemens S70 modern streetcar vehicles will have the same design scheme as the LYNX Blue Line light rail vehicles.

## CITYLYNX GOLD LINE OPERATIONS

### What is the projected operational cost of the line when finished?

The projected operating cost is \$6.2 million for the full 4 mile alignment after Phase 2 is complete. This includes the current cost of operating phase 1. The projected fare revenue is \$1.5 million annually after the completion of Phase 2.

### What will each rider pay to ride the CityLYNX Gold Line once Phase 2 has opened?

CATS existing local fare and fare policies will apply to the CityLYNX Gold Line upon the completion of Phase 2. The current local fare is \$2.20.

### What is the projected ridership and total cost per rider?

In addition to local fares, revenue supporting Gold Line operating costs includes Vehicle Rental Tax, Motor Vehicle License, and a portion of the City's sales taxes. Projected opening Ridership from Phase 2 is 4,100 per average weekday.

## CONTACT INFORMATION

### Who should I contact if I have questions or concerns about construction?

If you have an urgent concern relating to construction or building access, please contact the project's Lead Inspector at 704-361-5735. You can provide comments or ask questions by emailing us at [citylynxgoldline@charlottenc.gov](mailto:citylynxgoldline@charlottenc.gov). You can also reach CATS Customer Service at 704-366-RIDE (7433) or [telltransit@charlottenc.gov](mailto:telltransit@charlottenc.gov).

### What do I do if I have a utility outage?

If you're experiencing a utility outage, start by contacting the appropriate party:

AT&T: 866-620-6900

Piedmont Natural Gas: 800-752-7504

Charlotte Water: 311

Time Warner Cable: 877-566-4892

Duke Energy 800-PowerOn: 800-769-3766

### How can I stay informed on construction impacts?

Visit [www.charlottefuture.com](http://www.charlottefuture.com) to stay connected to project information, rapid transit planning and future construction updates. To receive newsletters, public meeting notices, construction updates, and upcoming milestones sign up for "Notify Me" by clicking on the \*notifyme\* tab to receive CityLYNX Gold Line updates electronically. When prompted check the box under CATS General Information section. Also, follow us on Twitter @CityLYNXUpdates and Facebook at [Facebook.com/CityLYNXGoldLineConstructionUpdates](https://www.facebook.com/CityLYNXGoldLineConstructionUpdates).



704.336.RIDE (7433)



WWW.RIDETRANSIT.ORG

