



See a Social Security Number? Say Something!
Report Privacy Problems to <https://public.resource.org/privacy>
Or call the IRS Identity Theft Hotline at 1-800-908-4490



Form 990-PF

Return of Private Foundation

OMB No. 1545-0052

2014

Department of the Treasury Internal Revenue Service

or Section 4947(a)(1) Trust Treated as Private Foundation

Do not enter social security numbers on this form as it may be made public.

Information about Form 990-PF and its separate instructions is at www.irs.gov/form990pf.

Open to Public Inspection

For calendar year 2014 or tax year beginning

, 2014, and ending

, 20

Name of foundation THE OAK FOUNDATION, U.S.A.
Employer identification number 13-3321196
C/O P. ROBERTS, PRICEWATERHOUSECOOPERS LLP
Telephone number (415) 498-5000
THREE EMBARCADERO CENTER
SAN FRANCISCO, CA 94111
G Check all that apply: Initial return, Final return, Address change
H Check type of organization: X Section 501(c)(3) exempt private foundation
I Fair market value of all assets at end of year \$ 47,556,882.
J Accounting method: X Accrual

Table with 5 columns: (a) Revenue and expenses per books, (b) Net investment income, (c) Adjusted net income, (d) Disbursements for charitable purposes. Rows include Revenue (1-12) and Operating and Administrative Expenses (13-27).

Stamp: E1-212 OCT 27 2015

SCANNED FEB 18 2016

SCANNED OCT 28 2015

Handwritten signature/initials: 648

Part II Balance Sheets		Attached schedules and amounts in the description column should be for end-of-year amounts only (See instructions.)			
		Beginning of year (a) Book Value	End of year (b) Book Value (c) Fair Market Value		
Assets	1	Cash - non-interest-bearing			
	2	Savings and temporary cash investments	1,305,938.	44,137,685.	44,137,685.
	3	Accounts receivable			
		Less: allowance for doubtful accounts			
	4	Pledges receivable			
		Less: allowance for doubtful accounts			
	5	Grants receivable			
	6	Receivables due from officers, directors, trustees, and other disqualified persons (attach schedule) (see instructions)			
	7	Other notes and loans receivable (attach schedule)			
		Less: allowance for doubtful accounts			
	8	Inventories for sale or use			
	9	Prepaid expenses and deferred charges	22,049.	23,200.	23,200.
	10a	Investments - U.S. and state government obligations (attach schedule)			
	b	Investments - corporate stock (attach schedule) ATCH 5	1,902,424.	1,894,135.	1,894,135.
	c	Investments - corporate bonds (attach schedule)			
	11	Investments - land, buildings, and equipment: basis			
	Less: accumulated depreciation (attach schedule)				
12	Investments - mortgage loans				
13	Investments - other (attach schedule) ATCH 6	70,244,202.	650,026.	650,026.	
14	Land, buildings, and equipment: basis	157,271.			
	Less: accumulated depreciation (attach schedule)	100,919.	56,352.	56,352.	
15	Other assets (describe ATCH 7)		795,484.	795,484.	
16	Total assets (to be completed by all filers - see the instructions. Also, see page 1, item I)	73,539,978.	47,556,882.	47,556,882.	
Liabilities	17	Accounts payable and accrued expenses	82,077.	45,122.	
	18	Grants payable			
	19	Deferred revenue			
	20	Loans from officers, directors, trustees, and other disqualified persons			
	21	Mortgages and other notes payable (attach schedule)			
	22	Other liabilities (describe)	540,000.		
23	Total liabilities (add lines 17 through 22)	622,077.	45,122.		
Net Assets or Fund Balances	Foundations that follow SFAS 117, check here <input type="checkbox"/> and complete lines 24 through 26 and lines 30 and 31.				
	24	Unrestricted			
	25	Temporarily restricted			
	26	Permanently restricted			
	Foundations that do not follow SFAS 117, check here and complete lines 27 through 31. <input checked="" type="checkbox"/>				
	27	Capital stock, trust principal, or current funds			
	28	Paid-in or capital surplus, or land, bldg., and equipment fund			
	29	Retained earnings, accumulated income, endowment, or other funds	72,917,901.	47,511,760.	
30	Total net assets or fund balances (see instructions)	72,917,901.	47,511,760.		
31	Total liabilities and net assets/fund balances (see instructions)	73,539,978.	47,556,882.		

Part III Analysis of Changes in Net Assets or Fund Balances

1	Total net assets or fund balances at beginning of year - Part II, column (a), line 30 (must agree with end-of-year figure reported on prior year's return)	1	72,917,901.
2	Enter amount from Part I, line 27a	2	17,284,178.
3	Other increases not included in line 2 (itemize)	3	
4	Add lines 1, 2, and 3	4	90,202,079.
5	Decreases not included in line 2 (itemize) ATCH 8	5	42,690,319.
6	Total net assets or fund balances at end of year (line 4 minus line 5) - Part II, column (b), line 30	6	47,511,760.

Part IV Capital Gains and Losses for Tax on Investment Income

Table with columns for (a) List and describe the kind(s) of property sold, (b) How acquired, (c) Date acquired, (d) Date sold, (e) Gross sales price, (f) Depreciation allowed, (g) Cost or other basis, (h) Gain or (loss), (i) F.M.V. as of 12/31/89, (j) Adjusted basis, (k) Excess of col. (i) over col. (j), and (l) Gains (Col. (h) gain minus col. (k), but not less than -0-) or Losses (from col. (h)).

Part V Qualification Under Section 4940(e) for Reduced Tax on Net Investment Income

(For optional use by domestic private foundations subject to the section 4940(a) tax on net investment income.)

If section 4940(d)(2) applies, leave this part blank.

Was the foundation liable for the section 4942 tax on the distributable amount of any year in the base period? [] Yes [X] No

Table with columns for (a) Base period years, (b) Adjusted qualifying distributions, (c) Net value of noncharitable-use assets, and (d) Distribution ratio. Includes rows for 2013-2009 and summary rows 2-8.

Part VI Excise Tax Based on Investment Income (Section 4940(a), 4940(b), 4940(e), or 4948 - see instructions)

Table with 11 rows for excise tax calculation. Includes sub-sections 6a-6d for credits and payments. Total tax due is 11,166.

Part VII-A Statements Regarding Activities

Table with 10 rows for activity statements. Includes questions about political campaigns, tax on political expenditures, and substantial contributors. Includes handwritten '2' in the right margin.

Part VII-A Statements Regarding Activities (continued)

11 At any time during the year, did the foundation, directly or indirectly, own a controlled entity within the meaning of section 512(b)(13)? If "Yes," attach schedule (see instructions).
12 Did the foundation make a distribution to a donor advised fund over which the foundation or a disqualified person had advisory privileges? If "Yes," attach statement (see instructions).
13 Did the foundation comply with the public inspection requirements for its annual returns and exemption application? Website address WWW.OAKFND.ORG
14 The books are in care of PAUL A. ROBERTS Telephone no. 415-498-5000 Located at ATTACHMENT 9 ZIP+4 94111
15 Section 4947(a)(1) nonexempt charitable trusts filing Form 990-PF in lieu of Form 1041 - Check here and enter the amount of tax-exempt interest received or accrued during the year. 15
16 At any time during calendar year 2014, did the foundation have an interest in or a signature or other authority over a bank, securities, or other financial account in a foreign country? UNITED KINGDOM

Part VII-B Statements Regarding Activities for Which Form 4720 May Be Required

File Form 4720 if any item is checked in the "Yes" column, unless an exception applies.

1a During the year did the foundation (either directly or indirectly):
(1) Engage in the sale or exchange, or leasing of property with a disqualified person?
(2) Borrow money from, lend money to, or otherwise extend credit to (or accept it from) a disqualified person?
(3) Furnish goods, services, or facilities to (or accept them from) a disqualified person?
(4) Pay compensation to, or pay or reimburse the expenses of, a disqualified person?
(5) Transfer any income or assets to a disqualified person (or make any of either available for the benefit or use of a disqualified person)?
(6) Agree to pay money or property to a government official? (Exception. Check "No" if the foundation agreed to make a grant to or to employ the official for a period after termination of government service, if terminating within 90 days.)
b If any answer is "Yes" to 1a(1)-(6), did any of the acts fail to qualify under the exceptions described in Regulations section 53.4941(d)-3 or in a current notice regarding disaster assistance (see instructions)?
c Did the foundation engage in a prior year in any of the acts described in 1a, other than excepted acts, that were not corrected before the first day of the tax year beginning in 2014?
2 Taxes on failure to distribute income (section 4942) (does not apply for years the foundation was a private operating foundation defined in section 4942(j)(3) or 4942(j)(5)):
a At the end of tax year 2014, did the foundation have any undistributed income (lines 6d and 6e, Part XIII) for tax year(s) beginning before 2014?
b Are there any years listed in 2a for which the foundation is not applying the provisions of section 4942(a)(2) (relating to incorrect valuation of assets) to the year's undistributed income? (If applying section 4942(a)(2) to all years listed, answer "No" and attach statement - see instructions.)
c If the provisions of section 4942(a)(2) are being applied to any of the years listed in 2a, list the years here.
3a Did the foundation hold more than a 2% direct or indirect interest in any business enterprise at any time during the year?
b If "Yes," did it have excess business holdings in 2014 as a result of (1) any purchase by the foundation or disqualified persons after May 26, 1969; (2) the lapse of the 5-year period (or longer period approved by the Commissioner under section 4943(c)(7)) to dispose of holdings acquired by gift or bequest; or (3) the lapse of the 10-, 15-, or 20-year first phase holding period? (Use Schedule C, Form 4720, to determine if the foundation had excess business holdings in 2014.)
4a Did the foundation invest during the year any amount in a manner that would jeopardize its charitable purposes?
b Did the foundation make any investment in a prior year (but after December 31, 1969) that could jeopardize its charitable purpose that had not been removed from jeopardy before the first day of the tax year beginning in 2014?

Part VII-B Statements Regarding Activities for Which Form 4720 May Be Required (continued)

- 5a** During the year did the foundation pay or incur any amount to:
- (1) Carry on propaganda, or otherwise attempt to influence legislation (section 4945(e))? Yes No
 - (2) Influence the outcome of any specific public election (see section 4955); or to carry on, directly or indirectly, any voter registration drive? Yes No
 - (3) Provide a grant to an individual for travel, study, or other similar purposes? Yes No
 - (4) Provide a grant to an organization other than a charitable, etc., organization described in section 4945(d)(4)(A)? (see instructions). Yes No
 - (5) Provide for any purpose other than religious, charitable, scientific, literary, or educational purposes, or for the prevention of cruelty to children or animals? Yes No
- b** If any answer is "Yes" to 5a(1)-(5), did any of the transactions fail to qualify under the exceptions described in Regulations section 53.4945 or in a current notice regarding disaster assistance (see instructions)? Yes No
 Organizations relying on a current notice regarding disaster assistance check here
- c** If the answer is "Yes" to question 5a(4), does the foundation claim exemption from the tax because it maintained expenditure responsibility for the grant? Yes No
 If "Yes," attach the statement required by Regulations section 53.4945-5(d).
- 6a** Did the foundation, during the year, receive any funds, directly or indirectly, to pay premiums on a personal benefit contract? Yes No
- b** Did the foundation, during the year, pay premiums, directly or indirectly, on a personal benefit contract? Yes No
 If "Yes" to 6b, file Form 8870.
- 7a** At any time during the tax year, was the foundation a party to a prohibited tax shelter transaction? Yes No
- b** If "Yes," did the foundation receive any proceeds or have any net income attributable to the transaction? Yes No

5b		
6b		X
7b		X

Part VIII Information About Officers, Directors, Trustees, Foundation Managers, Highly Paid Employees, and Contractors

1 List all officers, directors, trustees, foundation managers and their compensation (see instructions).

(a) Name and address	(b) Title, and average hours per week devoted to position	(c) Compensation (if not paid, enter -0-)	(d) Contributions to employee benefit plans and deferred compensation	(e) Expense account, other allowances
ATCH 10		0	0	0

2 Compensation of five highest-paid employees (other than those included on line 1 - see instructions). If none, enter "NONE."

(a) Name and address of each employee paid more than \$50,000	(b) Title, and average hours per week devoted to position	(c) Compensation	(d) Contributions to employee benefit plans and deferred compensation	(e) Expense account, other allowances
ATCH 11		475,206.	47,521.	0

Total number of other employees paid over \$50,000.

Part VIII Information About Officers, Directors, Trustees, Foundation Managers, Highly Paid Employees, and Contractors (continued)

3 Five highest-paid independent contractors for professional services (see instructions). If none, enter "NONE."

(a) Name and address of each person paid more than \$50,000	(b) Type of service	(c) Compensation
ATCH 12		122,111.

Total number of others receiving over \$50,000 for professional services		▶

Part IX-A Summary of Direct Charitable Activities

List the foundation's four largest direct charitable activities during the tax year. Include relevant statistical information such as the number of organizations and other beneficiaries served, conferences convened, research papers produced, etc.	Expenses
1 N/A	

2	

3	

4	

Part IX-B Summary of Program-Related Investments (see instructions)

Describe the two largest program-related investments made by the foundation during the tax year on lines 1 and 2.	Amount	
1 NONE		

2		

All other program-related investments. See instructions.		
3 NONE		

Total. Add lines 1 through 3		▶

Part X Minimum Investment Return (All domestic foundations must complete this part. Foreign foundations, see instructions.)

1	Fair market value of assets not used (or held for use) directly in carrying out charitable, etc., purposes:		
a	Average monthly fair market value of securities	1a	25,972,027.
b	Average of monthly cash balances	1b	30,654,182.
c	Fair market value of all other assets (see instructions).	1c	
d	Total (add lines 1a, b, and c)	1d	56,626,209.
e	Reduction claimed for blockage or other factors reported on lines 1a and 1c (attach detailed explanation)	1e	
2	Acquisition indebtedness applicable to line 1 assets	2	
3	Subtract line 2 from line 1d	3	56,626,209.
4	Cash deemed held for charitable activities. Enter 1 1/2% of line 3 (for greater amount, see instructions).	4	849,393.
5	Net value of noncharitable-use assets. Subtract line 4 from line 3. Enter here and on Part V, line 4	5	55,776,816.
6	Minimum investment return. Enter 5% of line 5	6	2,788,841.

Part XI Distributable Amount (see instructions) (Section 4942(j)(3) and (j)(5) private operating foundations and certain foreign organizations check here and do not complete this part.)

1	Minimum investment return from Part X, line 6	1	2,788,841.
2a	Tax on investment income for 2014 from Part VI, line 5	2a	446,953.
b	Income tax for 2014. (This does not include the tax from Part VI.)	2b	
c	Add lines 2a and 2b	2c	446,953.
3	Distributable amount before adjustments. Subtract line 2c from line 1	3	2,341,888.
4	Recoveries of amounts treated as qualifying distributions	4	
5	Add lines 3 and 4	5	2,341,888.
6	Deduction from distributable amount (see instructions).	6	
7	Distributable amount as adjusted. Subtract line 6 from line 5. Enter here and on Part XIII, line 1	7	2,341,888.

Part XII Qualifying Distributions (see instructions)

1	Amounts paid (including administrative expenses) to accomplish charitable, etc., purposes:		
a	Expenses, contributions, gifts, etc. - total from Part I, column (d), line 28	1a	28,723,694.
b	Program-related investments - total from Part IX-B	1b	
2	Amounts paid to acquire assets used (or held for use) directly in carrying out charitable, etc., purposes	2	
3	Amounts set aside for specific charitable projects that satisfy the:		
a	Suitability test (prior IRS approval required)	3a	
b	Cash distribution test (attach the required schedule)	3b	
4	Qualifying distributions. Add lines 1a through 3b. Enter here and on Part V, line 8, and Part XIII, line 4	4	28,723,694.
5	Foundations that qualify under section 4940(e) for the reduced rate of tax on net investment income. Enter 1% of Part I, line 27b (see instructions)	5	446,953.
6	Adjusted qualifying distributions. Subtract line 5 from line 4	6	28,276,741.

Note. The amount on line 6 will be used in Part V, column (b), in subsequent years when calculating whether the foundation qualifies for the section 4940(e) reduction of tax in those years.

Form 990-PF (2014)

Part XIII Undistributed income (see instructions)

	(a) Corpus	(b) Years prior to 2013	(c) 2013	(d) 2014
1 Distributable amount for 2014 from Part XI, line 7				2,341,888.
2 Undistributed income, if any, as of the end of 2014:				
a Enter amount for 2013 only				
b Total for prior years: 20 12, 20 11, 20 10				
3 Excess distributions carryover, if any, to 2014:				
a From 2009	20,985,614.			
b From 2010	34,726,386.			
c From 2011	45,785,291.			
d From 2012	41,772,701.			
e From 2013	33,579,549.			
f Total of lines 3a through e	176,849,541.			
4 Qualifying distributions for 2014 from Part XII, line 4: \$	28,723,694.			
a Applied to 2013, but not more than line 2a				
b Applied to undistributed income of prior years (Election required - see instructions)				
c Treated as distributions out of corpus (Election required - see instructions)				2,341,888.
d Applied to 2014 distributable amount	26,381,806.			
e Remaining amount distributed out of corpus				
5 Excess distributions carryover applied to 2014 (If an amount appears in column (d), the same amount must be shown in column (a).)				
6 Enter the net total of each column as indicated below:	203,231,347.			
a Corpus. Add lines 3f, 4c, and 4e. Subtract line 5				
b Prior years' undistributed income. Subtract line 4b from line 2b				
c Enter the amount of prior years' undistributed income for which a notice of deficiency has been issued, or on which the section 4942(a) tax has been previously assessed				
d Subtract line 6c from line 6b. Taxable amount - see instructions				
e Undistributed income for 2013. Subtract line 4a from line 2a. Taxable amount - see instructions				
f Undistributed income for 2014. Subtract lines 4d and 5 from line 1. This amount must be distributed in 2015				
7 Amounts treated as distributions out of corpus to satisfy requirements imposed by section 170(b)(1)(F) or 4942(g)(3) (Election may be required - see instructions)				
8 Excess distributions carryover from 2009 not applied on line 5 or line 7 (see instructions)	20,985,614.			
9 Excess distributions carryover to 2015. Subtract lines 7 and 8 from line 6a	182,245,733.			
10 Analysis of line 9:				
a Excess from 2010	34,726,386.			
b Excess from 2011	45,785,291.			
c Excess from 2012	41,772,701.			
d Excess from 2013	33,579,549.			
e Excess from 2014	26,381,806.			

Part XIV Private Operating Foundations (see instructions and Part VII-A, question 9)

NOT APPLICABLE

1a If the foundation has received a ruling or determination letter that it is a private operating foundation, and the ruling is effective for 2014, enter the date of the ruling

b Check box to indicate whether the foundation is a private operating foundation described in section 4942(j)(3) or 4942(j)(5)

2a Enter the lesser of the adjusted net income from Part I or the minimum investment return from Part X for each year listed

Table with columns for Tax year (a) 2014, Prior 3 years (b) 2013, (c) 2012, (d) 2011, and (e) Total. Rows include 2a, 2b, 2c, 2d, 2e, 3, 3a, 3b, 3c, 3d, 3e.

Part XV Supplementary Information (Complete this part only if the foundation had \$5,000 or more in assets at any time during the year - see instructions.)

1 Information Regarding Foundation Managers:

a List any managers of the foundation who have contributed more than 2% of the total contributions received by the foundation before the close of any tax year (but only if they have contributed more than \$5,000).

N/A

b List any managers of the foundation who own 10% or more of the stock of a corporation (or an equally large portion of the ownership of a partnership or other entity) of which the foundation has a 10% or greater interest.

N/A

2 Information Regarding Contribution, Grant, Gift, Loan, Scholarship, etc., Programs:

Check here [] if the foundation only makes contributions to preselected charitable organizations and does not accept unsolicited requests for funds.

a The name, address, and telephone number or e-mail address of the person to whom applications should be addressed:

ATCH 13

b The form in which applications should be submitted and information and materials they should include:

ATTACHMENT 15

c Any submission deadlines:

N/A

d Any restrictions or limitations on awards, such as by geographical areas, charitable fields, kinds of institutions, or other factors:

ATTACHMENT 15

Part XV Supplementary Information (continued)

3 Grants and Contributions Paid During the Year or Approved for Future Payment

Recipient Name and address (home or business)	If recipient is an individual, show any relationship to any foundation manager or substantial contributor	Foundation status of recipient	Purpose of grant or contribution	Amount
a Paid during the year ATTACHMENT 16				27,562,774.
Total ▶ 3a				27,562,774.
b Approved for future payment ATTACHMENT 17				
Total ▶ 3b				

Part XVI-A Analysis of Income-Producing Activities

Enter gross amounts unless otherwise indicated.

Table with 5 main columns: (a) Business code, (b) Amount, (c) Exclusion code, (d) Amount, (e) Related or exempt function income. Rows include Program service revenue, Fees and contracts from government agencies, Membership dues and assessments, Interest on savings and temporary cash investments, Dividends and interest from securities, Net rental income or (loss) from real estate, Net rental income or (loss) from personal property, Other investment income, Gain or (loss) from sales of assets other than inventory, Net income or (loss) from special events, Gross profit or (loss) from sales of inventory, Other revenue, and Subtotal.

Part XVI-B Relationship of Activities to the Accomplishment of Exempt Purposes

Table with 2 columns: Line No. and Explain below how each activity for which income is reported in column (e) of Part XVI-A contributed importantly to the accomplishment of the foundation's exempt purposes (other than by providing funds for such purposes). (See instructions.)

Part XVII Information Regarding Transfers To and Transactions and Relationships With Noncharitable Exempt Organizations

- 1 Did the organization directly or indirectly engage in any of the following with any other organization described in section 501(c) of the Code... a Transfers from the reporting foundation to a noncharitable exempt organization of: (1) Cash, (2) Other assets. b Other transactions: (1) Sales of assets to a noncharitable exempt organization, (2) Purchases of assets from a noncharitable exempt organization, (3) Rental of facilities, equipment, or other assets, (4) Reimbursement arrangements, (5) Loans or loan guarantees, (6) Performance of services or membership or fundraising solicitations. c Sharing of facilities, equipment, mailing lists, other assets, or paid employees. d If the answer to any of the above is "Yes," complete the following schedule.

Table with 2 columns: Yes, No. Rows correspond to items 1a(1), 1a(2), 1b(1) through 1b(6), and 1c.

Table with 4 columns: (a) Line no., (b) Amount involved, (c) Name of noncharitable exempt organization, (d) Description of transfers, transactions, and sharing arrangements.

2a Is the foundation directly or indirectly affiliated with, or related to, one or more tax-exempt organizations described in section 501(c) of the Code (other than section 501(c)(3)) or in section 527? Yes No

Table with 3 columns: (a) Name of organization, (b) Type of organization, (c) Description of relationship.

Under penalties of perjury I declare that I have examined this return including accompanying schedules and statements and to the best of my knowledge and belief, it is true, correct, and complete. Declaration of preparer (other than taxpayer) is based on all information of which preparer has any knowledge.

Sign Here: Signature of officer or trustee, Date 11/0/13/15, Title SECRETARY. May the IRS discuss this return with the preparer shown below? Yes No

Paid Preparer Use Only: Print/Type preparer's name ROBERT D FARR, Preparer's signature, Date 10/6/15, Firm's name PRICEWATERHOUSECOOPERS LLP, Firm's address THREE EMBARCADERO CENTER SAN FRANCISCO, CA, Firm's EIN 13-4008324, Phone no 415-498-5000.

Schedule B

(Form 990, 990-EZ, or 990-PF)
Department of the Treasury
Internal Revenue Service

Schedule of Contributors

OMB No. 1545-0047

2014

▶ Attach to Form 990, Form 990-EZ, or Form 990-PF.

▶ Information about Schedule B (Form 990, 990-EZ, or 990-PF) and its instructions is at www.irs.gov/form990.

Name of the organization THE OAK FOUNDATION, U.S.A. C/O P. ROBERTS, PRICEWATERHOUSECOOPERS LLP		Employer identification number 13-3321196
--	--	--

Organization type (check one):

Filers of:

Section:

Form 990 or 990-EZ

501(c)() (enter number) organization

4947(a)(1) nonexempt charitable trust not treated as a private foundation

527 political organization

Form 990-PF

501(c)(3) exempt private foundation

4947(a)(1) nonexempt charitable trust treated as a private foundation

501(c)(3) taxable private foundation

Check if your organization is covered by the General Rule or a Special Rule.

Note. Only a section 501(c)(7), (8), or (10) organization can check boxes for both the General Rule and a Special Rule. See instructions.

General Rule

For an organization filing Form 990, 990-EZ, or 990-PF that received, during the year, contributions totaling \$5,000 or more (in money or property) from any one contributor. Complete Parts I and II. See instructions for determining a contributor's total contributions.

Special Rules

For an organization described in section 501(c)(3) filing Form 990 or 990-EZ that met the 33 1/3 % support test of the regulations under sections 509(a)(1) and 170(b)(1)(A)(vi), that checked Schedule A (Form 990 or 990-EZ), Part II, line 13, 16a, or 16b, and that received from any one contributor, during the year, total contributions of the greater of (1) \$5,000 or (2) 2% of the amount on (i) Form 990, Part VIII, line 1h, or (ii) Form 990-EZ, line 1. Complete Parts I and II.

For an organization described in section 501(c)(7), (8), or (10) filing Form 990 or 990-EZ that received from any one contributor, during the year, total contributions of more than \$1,000 *exclusively* for religious, charitable, scientific, literary, or educational purposes, or the prevention of cruelty to children or animals. Complete Parts I, II, and III.

For an organization described in section 501(c)(7), (8), or (10) filing Form 990 or 990-EZ that received from any one contributor, during the year, contributions *exclusively* for religious, charitable, etc., purposes, but no such contributions totaled more than \$1,000. If this box is checked, enter here the total contributions that were received during the year for an *exclusively* religious, charitable, etc., purpose. Do not complete any of the parts unless the **General Rule** applies to this organization because it received *nonexclusively* religious, charitable, etc., contributions totaling \$5,000 or more during the year ▶ \$ _____

Caution. An organization that is not covered by the General Rule and/or the Special Rules does not file Schedule B (Form 990, 990-EZ, or 990-PF), but it must answer "No" on Part IV, line 2, of its Form 990; or check the box on line H of its Form 990-EZ or on its Form 990-PF, Part I, line 2, to certify that it does not meet the filing requirements of Schedule B (Form 990, 990-EZ, or 990-PF).

Name of organization **THE OAK FOUNDATION, U.S.A.**
C/O P. ROBERTS, PRICEWATERHOUSECOOPERS LLP

Employer identification number
13-3321196

Part I Contributors (see instructions). Use duplicate copies of Part I if additional space is needed.

(a) No.	(b) Name, address, and ZIP + 4	(c) Total contributions	(d) Type of contribution
1	OAK FIDUCIARY SERVICES LTD AS TRUSTEE TO OAK TRUST JERSEY LA MOTTE CHAMBERS ST. HELIER JERSEY	\$ 1,028,000.	Person <input checked="" type="checkbox"/> Payroll <input type="checkbox"/> Noncash <input type="checkbox"/> (Complete Part II for noncash contributions.)
		\$	Person <input type="checkbox"/> Payroll <input type="checkbox"/> Noncash <input type="checkbox"/> (Complete Part II for noncash contributions.)
		\$	Person <input type="checkbox"/> Payroll <input type="checkbox"/> Noncash <input type="checkbox"/> (Complete Part II for noncash contributions.)
		\$	Person <input type="checkbox"/> Payroll <input type="checkbox"/> Noncash <input type="checkbox"/> (Complete Part II for noncash contributions.)
		\$	Person <input type="checkbox"/> Payroll <input type="checkbox"/> Noncash <input type="checkbox"/> (Complete Part II for noncash contributions.)
		\$	Person <input type="checkbox"/> Payroll <input type="checkbox"/> Noncash <input type="checkbox"/> (Complete Part II for noncash contributions.)

Name of organization **THE OAK FOUNDATION, U.S.A.**
C/O P. ROBERTS, PRICEWATERHOUSECOOPERS LLP

Employer identification number
13-3321196

Part II Noncash Property (see instructions). Use duplicate copies of Part II if additional space is needed.

(a) No. from Part I	(b) Description of noncash property given	(c) FMV (or estimate) (see instructions)	(d) Date received
-----	----- ----- -----	\$ -----	-----
-----	----- ----- -----	\$ -----	-----
-----	----- ----- -----	\$ -----	-----
-----	----- ----- -----	\$ -----	-----
-----	----- ----- -----	\$ -----	-----
-----	----- ----- -----	\$ -----	-----
-----	----- ----- -----	\$ -----	-----
-----	----- ----- -----	\$ -----	-----
-----	----- ----- -----	\$ -----	-----

Name of organization **THE OAK FOUNDATION, U.S.A.** Employer identification number
C/O P. ROBERTS, PRICEWATERHOUSECOOPERS LLP 13-3321196

Part III Exclusively religious, charitable, etc., contributions to organizations described in section 501(c)(7), (8), or (10) that total more than \$1,000 for the year from any one contributor. Complete columns (a) through (e) and the following line entry. For organizations completing Part III, enter the total of exclusively religious, charitable, etc., contributions of \$1,000 or less for the year. (Enter this information once. See instructions.) ▶ \$ _____
 Use duplicate copies of Part III if additional space is needed.

(a) No. from Part I	(b) Purpose of gift	(c) Use of gift	(d) Description of how gift is held
---	----- ----- -----	----- ----- -----	----- ----- -----
(e) Transfer of gift			
Transferee's name, address, and ZIP + 4		Relationship of transferor to transferee	
----- ----- -----		----- ----- -----	
---	----- ----- -----	----- ----- -----	----- ----- -----
(e) Transfer of gift			
Transferee's name, address, and ZIP + 4		Relationship of transferor to transferee	
----- ----- -----		----- ----- -----	
---	----- ----- -----	----- ----- -----	----- ----- -----
(e) Transfer of gift			
Transferee's name, address, and ZIP + 4		Relationship of transferor to transferee	
----- ----- -----		----- ----- -----	
---	----- ----- -----	----- ----- -----	----- ----- -----
(e) Transfer of gift			
Transferee's name, address, and ZIP + 4		Relationship of transferor to transferee	
----- ----- -----		----- ----- -----	

ATTACHMENT 1

FORM 990PF, PART I - OTHER INCOME

<u>DESCRIPTION</u>	<u>REVENUE AND EXPENSES PER BOOKS</u>	<u>NET INVESTMENT INCOME</u>
REVERSAL OF DEFERRED FEDERAL EXCISE TAX	540,000.	
LOSS ON FOREIGN CURRENCY TRANSACTIONS	-995,445.	-995,445.
INCOME FROM PASS THROUGH ACTIVITIES		7,359.
TOTALS	<u>-455,445.</u>	<u>-988,086.</u>

ATTACHMENT 2

FORM 990PF, PART I - OTHER PROFESSIONAL FEES

<u>DESCRIPTION</u>	<u>REVENUE AND EXPENSES PER BOOKS</u>	<u>NET INVESTMENT INCOME</u>
KEMNAY SERVICES LIMITED	122,111.	122,111.
OTHER PROFESSIONAL FEES FROM PASS-THRU ENTITIES	21,878.	21,878.
		12,959.
TOTALS	<u>143,989.</u>	<u>156,948.</u>

ATTACHMENT 3

FORM 990PF, PART I - TAXES

<u>DESCRIPTION</u>	<u>REVENUE AND EXPENSES PER BOOKS</u>	<u>NET INVESTMENT INCOME</u>
TAXES FROM PASS-THRU ENTITIES	388,947.	268.
TOTALS	<u>388,947.</u>	<u>268.</u>

ATTACHMENT 4

FORM 990PF, PART I - OTHER EXPENSES

<u>DESCRIPTION</u>	<u>REVENUE AND EXPENSES PER BOOKS</u>	<u>NET INVESTMENT INCOME</u>	<u>CHARITABLE PURPOSES</u>
TELEPHONE & DELIVERY	17,077.		17,077.
COMPUTER SERVICE	10,218.		10,218.
GRANT MONITORING COSTS	102,673.		102,673.
GENERAL AND ADMINISTRATION	48,323.		48,323.
SUPPLIES AND MISC	27,420.		27,420.
BLACKSTONE REAL ESTATE PARTNERS INTL I.E., LP			
BLACKSTONE REAL ESTATE PARTNERS INTL I.D. 2, LP		8.	
LEXINGTON CAPITAL PARTNERS II TERRA FIRMA DEUTCHE ANNINGTON-III LP	4,016.	4,016.	
BANKING FEES			
TOTALS	<u>209,727.</u>	<u>4,024.</u>	<u>205,711.</u>

ATTACHMENT 5

FORM 990PF, PART II - CORPORATE STOCK

<u>DESCRIPTION</u>	<u>ENDING BOOK VALUE</u>	<u>ENDING FMV</u>
ACCSYS TECHNOLOGIES PLC	1,696,375.	1,696,375.
BLACKLIGHT POWER INC	197,760.	197,760.
TOTALS	<u>1,894,135.</u>	<u>1,894,135.</u>

ATTACHMENT 6

FORM 990PF, PART II - OTHER INVESTMENTS

<u>DESCRIPTION</u>	<u>ENDING BOOK VALUE</u>	<u>ENDING FMV</u>
STONEHILL OFFSHORE PARTNERS LT	NONE	NONE
BLACK BEAR OFFSHORE FUND SEPT	NONE	NONE
LEXINGTON CAPITAL PARTNERS II	386,094.	386,094.
TERRA FIRMA DEUTSCHE ANNINGTON	263,932.	263,932.
TOTALS	<u>650,026.</u>	<u>650,026.</u>

ATTACHMENT 7

FORM 990PF, PART II - OTHER ASSETS

<u>DESCRIPTION</u>	<u>ENDING BOOK VALUE</u>	<u>ENDING FMV</u>
RECEIVABLE FROM STONEHILL	795,484.	795,484.
TOTALS	<u>795,484.</u>	<u>795,484.</u>

ATTACHMENT 8FORM 990PF, PART III - OTHER DECREASES IN NET WORTH OR FUND BALANCES

<u>DESCRIPTION</u>	<u>AMOUNT</u>
UNREALIZED LOSSES FROM INVESTMENTS	42,690,319.
TOTAL	<u>42,690,319.</u>

ATTACHMENT 9

FORM 990PF, PART VII-A, LINE 14 - LOCATION OF BOOKS

C/O PWC LLP, THREE EMBARCADERO CENTER SAN FRANCISCO, CA

FORM 990PF, PART VIII - LIST OF OFFICERS, DIRECTORS, AND TRUSTEES

ATTACHMENT 10

<u>NAME AND ADDRESS</u>	<u>TITLE AND AVERAGE HOURS PER WEEK DEVOTED TO POSITION</u>	<u>COMPENSATION</u>	<u>CONTRIBUTIONS TO EMPLOYEE BENEFIT PLANS</u>	<u>EXPENSE ACCT AND OTHER ALLOWANCES</u>
ALAN M. PARKER PRICewaterHOUSECOOPERS LLP THREE EMBARCADERO CENTER SAN FRANCISCO, CA 94111	DIRECTOR/PRESIDENT 1.00	0	0	0
JETTE PARKER PRICewaterHOUSECOOPERS LLP THREE EMBARCADERO CENTER SAN FRANCISCO, CA 94111	DIRECTOR/VP 1.00	0	0	0
GARY GOODMAN PRICewaterHOUSECOOPERS LLP THREE EMBARCADERO CENTER SAN FRANCISCO, CA 94111	SECRETARY 1.00	0	0	0
CAROLINE TURNER PRICewaterHOUSECOOPERS LLP THREE EMBARCADERO CENTER SAN FRANCISCO, CA 94111	VICE CHAIR 1.00	0	0	0
NATALIE PARKER PRICewaterHOUSECOOPERS LLP THREE EMBARCADERO CENTER SAN FRANCISCO, CA 94111	VICE CHAIR 1.00	0	0	0

FORM 990PF, PART VIII - LIST OF OFFICERS, DIRECTORS, AND TRUSTEES

NAME AND ADDRESS	TITLE AND AVERAGE HOURS PER WEEK DEVOTED TO POSITION	COMPENSATION	CONTRIBUTIONS	EXPENSE ACCT
			TO EMPLOYEE	AND OTHER
			BENEFIT PLANS	ALLOWANCES

KRISTIAN PARKER PRICEWATERHOUSECOOPERS THREE EMBARCADERO CENTER SAN FRANCISCO, CA 94111	CHAIRMAN OF THE BOARD 1.00	0	0	0
GRAND TOTALS		0	0	0

NAME AND ADDRESS	TITLE AND AVERAGE HOURS PER WEEK DEVOTED TO POSITION	COMPENSATION	CONTRIBUTIONS TO EMPLOYEE BENEFIT PLANS	EXPENSE ACCT AND OTHER ALLOWANCES
KRISTIAN PARKER PRICEWATERHOUSECOOPERS THREE EMBARCADERO CENTER SAN FRANCISCO, CA 94111	CHAIRMAN OF THE BOARD 1.00	0	0	0
GRAND TOTALS		0	0	0

990PF, PART VIII - COMPENSATION OF THE FIVE HIGHEST PAID EMPLOYEES

ATTACHMENT 11

<u>NAME AND ADDRESS</u>	<u>TITLE AND AVERAGE HOURS PER WEEK DEVOTED TO POSITION</u>	<u>COMPENSATION</u>	<u>CONTRIBUTIONS EXPENSE ACCT TO EMPLOYEE AND OTHER BENEFIT PLANS ALLOWANCES</u>
ANNE HENSHAW C/O PRICEWATERHOUSECOOPERS THREE EMBARCADERO CENTER SAN FRANCISCO, CA 94111	PROGRAM OFFICER 40.00	120,135.	12,014. 0
STACY PARKER-FISHER C/O PRICEWATERHOUSECOOPERS THREE EMBARCADERO CENTER SAN FRANCISCO, CA 94111	PROGRAM DIRECTOR 40.00	110,667.	11,067. 0
KAREN PHAIR C/O PRICEWATERHOUSECOOPERS THREE EMBARCADERO CENTER SAN FRANCISCO, CA 94111	PROGRAM ASSISTANT 40.00	74,253.	7,425. 0
DANA BRINSON C/O PRICEWATERHOUSECOOPERS THREE EMBARCADERO CENTER SAN FRANCISCO, CA 94111	40.00	83,829.	8,383. 0
MILLIE BROBSTON C/O PRICEWATERHOUSECOOPERS THREE EMBARCADERO CENTER SAN FRANCISCO, CA 94111	PROGRAM OFFICER 40.00	86,322.	8,632. 0
<u>TOTAL COMPENSATION</u>		<u>475,206.</u>	<u>47,521. 0</u>

990PF, PART VIII- COMPENSATION OF THE FIVE HIGHEST PAID PROFESSIONALSATTACHMENT 12

<u>NAME AND ADDRESS</u>	<u>TYPE OF SERVICE</u>	<u>COMPENSATION</u>
KEMNAY SERVICES, LTD 58 AVENUE LOIS CASAI 1216 COINTRIN SWITZERLAND	ADVISORY/ACCOUNTING	122,111.
	TOTAL COMPENSATION	<u>122,111.</u>

ATTACHMENT 13

FORM 990PF, PART XV - NAME, ADDRESS AND PHONE FOR APPLICATIONS

STACY PARKER-FISHER
55 VILCOM CENTER DRIVE, SUITE 340
CHAPEL HILL, NC 27514
919-951-0585

THE OAK FOUNDATION, U.S.A.

13-3321196

FORM 990-PF, PART XVI-A - ANALYSIS OF OTHER REVENUE

ATTACHMENT 14

<u>DESCRIPTION</u>	<u>BUSINESS CODE</u>	<u>AMOUNT</u>	<u>EXCLUSION CODE</u>	<u>AMOUNT</u>	<u>RELATED OR EXEMPT FUNCTION INCOME</u>
FOREIGN CURRENCY TRANSACTION INCOME			14	-995,445.	
REVERSAL OF DEFERRED FEDERAL EXCISE TAX LIABILITY			01	540,000.	
TOTALS				<u><u>-455,445.</u></u>	

**FORM 990-PF - PART IV
CAPITAL GAINS AND LOSSES FOR TAX ON INVESTMENT INCOME**

Kind of Property		Description				P or D	Date acquired	Date sold
Gross sale price less expenses of sale	Depreciation allowed/ allowable	Cost or other basis	FMV as of 12/31/69	Adj. basis as of 12/31/69	Excess of FMV over adj basis		Gain or (loss)	
72908790.		PUBLICLY TRADED SECURITIES PROPERTY TYPE: SECURITIES 26909906.				P	45998884.	
		PASS-THROUGH INVESTMENTS PROPERTY TYPE: OTHER 163,199.				P	-163,199.	
TOTAL GAIN (LOSS)							<u>45835685.</u>	

Oak Foundation commits its resources to address issues of global social and environmental concern

[Grant-making Criteria](#)

[Letters of Enquiry](#)

[Grant Application Process](#)

[Org. Development & Capacity Building](#)

[Grant Database](#)

[Frequently Asked Questions](#)

[Home](#) > [Grants](#) > [Grant Application Process](#)

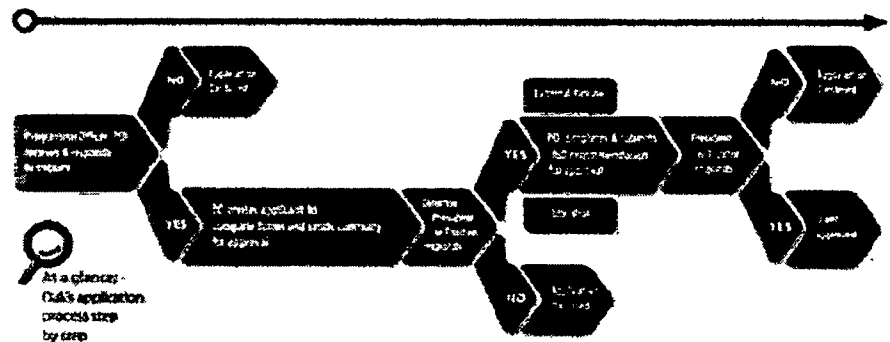
Grant Application Process

After approval of a project concept through a **letter of enquiry**, programme staff will invite an organisation to submit a full proposal. We follow a grant application process, which includes an evaluation of the strengths and weaknesses of a project, a financial review made by our administration team as well as various approvals.

Each of these stages could lead to more information or discussion. For programme staff to make the best possible recommendation, they strive to gain the most comprehensive view of the organisation, its board members, the project and finances.

The grant application process does not have a set time frame. It can take from two months to nine months from submission of an enquiry to final approval, as indicated in the graph below. Timing depends on a number of factors, but we work to ensure the most efficient process possible. After the initial approval of an enquiry, organisations are encouraged to reach out to programme officers to learn about the grant-making process and the stages of the application. The lines of communication between the programme officer and the organisations are always open – it is a collaborative effort.

Grant Application Process Graph



Oak Foundation commits its resources to address issues of global social and environmental concern

Grant-making Criteria**Letters of Enquiry****Grant Application Process****Org. Development & Capacity Building****Grant Database****Frequently Asked Questions**

[Home](#) > [Grants](#) > [Grant-making Criteria](#)

Grant-making Criteria

We consider requests for funding that meet the overall mission and goals of the Foundation. We fund a variety of time-bound projects, core costs, technical assistance and collaborative activities. However, each programme has its own funding criteria, geographic scope and requirements. Please review **programme pages** in detail for further information.

We occasionally initiate our own programmes or form initiatives in our areas of interest by issuing calls for proposals on specific topics, or convening policymakers and practitioners to explore solutions to critical issues.

While each programme has its own areas of focus, as a whole, we adhere to six funding principles. These include funding initiatives that:

- Target root causes of problems
- Are replicable either within a sector or across geographical locations
- Include plans for long-term sustainability
- Have secured co-funding
- Strive to collaborate with like-minded organisations
- Value the participation of people (including children) and communities

Funding Restrictions

We do not provide support to individuals, and do not provide funding for scholarships or tuition assistance for undergraduate or postgraduate studies. We also do not fund religious organisations for religious purposes, election campaigns or general fund-raising drives. Except in special circumstances, we do not fund initiatives under USD 25,000.

ORGANIZATION NAME	ORGANIZATION ADDRESS	CITY	STATE	ZIP	FOUNDATION STATUS	GRANT PURPOSE	GRANT AMOUNT
ADORNIAH ENDOWMENT FOUNDATION	1666 CONNECTICUT AVENUE NW, SUITE 410	WASHINGTON	DC	20009	FC	THE IRAN HUMAN RIGHTS MEMORIAL PROJECT 2012 - 2015	220,000
AMERICAN ASSOCIATION FOR THE ADVANCEMENT OF SCIENCE	1202 NEW YORK AVENUE NW	WASHINGTON	DC	20005	PC	OCCEPATIAL TECHNOLOGIES AND HUMAN RIGHTS	396,114
AMERICAN CIVIL LIBERTIES UNION FOUNDATION INC	125 BROAD STREET, 16TH FLOOR	NEW YORK	NY	10004-2400	PC	WOMEN'S RIGHTS PROJECT - IMPLEMENTING THE JESSICA GENALES DECISION	125,000
AMERICAN UNIVERSITY WASHINGTON COLLEGE OF LAW	4801 MASSACHUSETTS AVENUE, NW	WASHINGTON	DC	20016	PC	UN SPECIAL RAPPORTEUR ON TORTURE FOLLOW UP INITIATIVE	162,500
BENEFICIENT TECHNOLOGY INC (BENEFICH TECHNOLOGY SERVING HUMANITY)	480 S. CALICRITA AVE., SUITE 251	FALC ALTO	CA	94308-1609	PC	UNRESTRICTED SUPPORT FOR THE HUMAN RIGHTS PROGRAM	400,000
BOSTON MEDICAL CENTER CORPORATION	801 MASSACHUSETTS AVENUE, 1ST FLOOR	BOSTON	MA	02118	PC	PREVENTING HOMELESSNESS FOR AT-RISK OLDER ADULTS	110,707
BOTSWANA-HARVARD SCHOOL OF PUBLIC HEALTH AIDS INITIATIVE	DEPARTMENT OF THROLOGY AND INFECTIOUS DISEASES, HARVARD SCHOOL OF PUBLIC HEALTH, BLDG. 2, RM. 420 651 HUNTINGTON AVENUE	BOSTON	MA	02115	PC	TO SAVE WOMEN AND CHILDREN OF SOUTHERN AFRICA FROM HIV	1,152,022
BOHREY RESIDENTS COMMITTEE	324 LAPAYETTE STREET, 8TH FLOOR	NEW YORK	NY	10012	PE	MOVING HOME	29,931
BRISTOL BAY NATIVE ASSOCIATION	PO BOX 310	DILLINGHAM	AK	99576	PC	BUILDING CAPACITY FOR COMMUNITY-BASED MARINE HANNAH CONSERVATION IN BRISTOL BAY	107,678
CALIFORNIA STATE UNIVERSITY, NORTHRIDGE	19111 NORTHOFF STREET	NORTHRIDGE	CA	91330	PC	ADDRESSING LEARNING DIFFERENCES THROUGH CH-LINE MODULES IN NEURODEVELOPMENT	150,000
CARNEGIE ENDOWMENT FOR INTERNATIONAL PEACE	1779 MASSACHUSETTS AVE NW	WASHINGTON	DC	20036	PC	ILLUMINATING AND MANAGING THE CLIMATE IMPLICATIONS OF UNCONVENTIONAL OILS	94,128
CARNEGIE ENDOWMENT FOR INTERNATIONAL PEACE	1779 MASSACHUSETTS AVE NW	WASHINGTON	DC	20036	PC	ILLUMINATING AND MANAGING THE CLIMATE IMPLICATIONS OF UNCONVENTIONAL OILS	150,000
CENTER FOR COMMUNITY CHANGE	1336 U STREET, N.W.	WASHINGTON	DC	20009	PC	SCORE GRANT	160,000
CENTER FOR COMMUNITY PROGRESS	421 GARLAND STREET, SUITE A	MIAMI	FL	48503	PC	EXPANSION PROJECT	150,100
CENTER FOR RESPONSIBLE LENDING	302 WEST MAIN STREET	DURHAM	NC	27701	PC	SCORE SUPPORT	850,000
CENTER FOR URBAN COMMUNITY SERVICES INC, THE	198 E 121ST STREET	NEW YORK	NY	10035	PC	THE WELLNESS PROJECT	184,487
CENTER ON BUDGET AND POLICY PRIORITIES	820 FIRST STREET NE	WASHINGTON	DC	20002	PC	STRENGTHENING TAHP FOR VULNERABLE FAMILIES	105,575
CITIZENS HOUSING AND PLANNING ASSOCIATION	18 TREMONT STREET, SUITE 401	BOSTON	MA	02108	PC	SCORE GRANT	200,000
CLIMATEWORKS FOUNDATION, USA	235 MONTGOMERY STREET, SUITE 1300	SAN FRANCISCO	CA	94104	PC	STRENGTHENING CLIMATEWORKS FOUNDATION THROUGH CORE SUPPORT	600,000
CLIMATEWORKS FOUNDATION, USA	235 MONTGOMERY STREET, SUITE 1300	SAN FRANCISCO	CA	94104	PC	STRENGTHENING CLIMATEWORKS FOUNDATION THROUGH CORE SUPPORT	1,250,000
CLIMATEWORKS FOUNDATION, USA	235 MONTGOMERY STREET, SUITE 1300	SAN FRANCISCO	CA	94104	PC	STRENGTHENING CLIMATEWORKS FOUNDATION THROUGH CORE SUPPORT	1,250,000
CLITCH HEALTH ACCESS INITIATIVE	393 BOSTON AVENUE, SUITE 400	BOSTON	MA	02127	PC	GENERAL OPERATING SUPPORT	502,000
COLLEGE OF NEW ROCHELLE	29 CASTLE PLACE	NEW ROCHELLE	NY	10865	PC	INTERNSHIP PROGRAM AT THE SCHOOL OF NEW RESOURCES (LEARNING GRANT)	79,310
COLUMBIA UNIVERSITY	PROGRAM ON FORCED MIGRATION AND HEALTH, COLUMBIA UNIVERSITY, MAILMAN SCHOOL OF PUBLIC HEALTH, 60 RAYEN AVENUE, P-4, SUITE 432	NEW YORK	NY	10032	PC	THE CPC NETWORK, FULFILLING THE PROMISE	199,999
COMMUNITY LEGAL SERVICES INC	1424 CHESTNUT STREET	PHILADELPHIA	PA	19102	PC	PROTECTING LOW INCOME HOMES - HOUSING ADVOCACY	100,000
CORAL REEF ALLIANCE	1330 BROADWAY, SUITE 1602	OAKLAND	CA	94612	PC	CORDELLA BANKS - PRESERVING AND CONNECTING A CORAL OASE	77,417
CRAC LAW CENTER	917 BR CRK ST., SUITE 417	PORTLAND	OR	97205	PC	STRATEGIC SUPPORT FOR THE ALASKA ESKIMO WHALING COMMISSION	52,740
DUKE UNIVERSITY	PO BOX 9077	DURHAM	NC	27708-0077	PC	INTEGRATED PROGRAM IN MARINE CONSERVATION WITH GLOBAL FELLOWS	1,433,000
DURHAM'S PARTNERSHIP FOR CHILDREN	1101 E BRIGGS AVE., SUITE 210	DURHAM	NC	27703	PC	DURHAM TOUCHPOINTS COLLABORATIVE	132,268
EAST CAROLINA UNIVERSITY	119 GREENTREE BUILDING	GREENVILLE	NC	27838	PC	PROJECT STEEP CONTINUING GRANT	154,200
ECON UNIVERSITY	HOGNEY BUILDING, 2105 CAMPUS BOX	ELGIN	NC	27244	PC	IT TAKES A VILLAGE 2013	129,400
ENVIRONMENTAL DEFENSE INC	HEADQUARTERS OFFICE, 257 PARK AVENUE SOUTH	NEW YORK	NY	10010	PC	MESAMERICA SUSTAINABLE FISHERIES INITIATIVE	200,000

THE DAK FOUNDATION, USA
FORM 990-PF, PART X-7, GRANTS PAID DURING THE YEAR

ORGANIZATION NAME	ORGANIZATION ADDRESS	CITY	STATE	ZIP	FOUNDATION STATUS	GRANT PURPOSE	GRANT AMOUNT
ENVIRONMENTAL DEFENSE INC	HEADQUARTERS OFFICE, 257 PARK AVENUE SOUTH	NEW YORK	NY	10010	FC	1) GREENING THE SUPPLY CHAIN; 2) ESTABLISHING GREEN PROCUREMENT GUIDELINES IN CHINA	250,000
ENVIRONMENTAL DEFENSE INC	HEADQUARTERS OFFICE, 257 PARK AVENUE SOUTH	NEW YORK	NY	10010	FC	1) GREENING THE SUPPLY CHAIN; 2) ESTABLISHING GREEN PROCUREMENT GUIDELINES IN CHINA	500,000
EYE TO EYE NATIONAL, INC	1430 BROADWAY, 8TH FLOOR	NEW YORK	NY	10018	FC	EYE TO EYE CORE SUPPORT	101,950
FIRELIGHT FOUNDATION	740 FRONT STREET, SUITE #30C	SANTA CRUZ	CA	95060	FC	FAITH TO ACTION	110,000
FUND FOR GLOBAL HUMAN RIGHTS	1666 CONNECTICUT AVENUE NW, SUITE 410	WASHINGTON	DC	20009	FC	GENERAL SUPPORT - HUMAN RIGHTS DEFENDERS	220,000
FUND FOR GLOBAL HUMAN RIGHTS	1666 CONNECTICUT AVENUE NW, SUITE 410	WASHINGTON	DC	20009	FC	HUMAN RIGHTS MEMORIAL PROJECT 2012 - 2015	220,000
FUNDERS TOGETHER TO END HOMELESSNESS	89 S STREET, 8TH FLOOR 242 NEWBURY STREET, 2ND FLOOR	BOSTON	MA	2111	FC	FUNDERS TOGETHER TO END HOMELESSNESS - CORE	100,000
GEORGETOWN UNIVERSITY LAW CENTER	600 NEW JERSEY AVENUE, 5M	WASHINGTON	DC	20001	FC	GEORGETOWN CLIMATE CENTER - TRANSPORTATION CLIMATE INITIATIVE	152,924
GOOD BROTHERS SERVICES	305 SEVENTH AVENUE, FLOOR 9	NEW YORK	NY	10001	FC	GENERAL OPERATING SUPPORT	200,000
GREATER BOSTON LEGAL SERVICES	197 FRIEND STREET	BOSTON	MA	02114	FC	GRLE HOUSING PROGRAMS; COPE SUPPORT	230,000
HABITAT FOR HUMANITY PHILADELPHIA (HHPH)	1829 NORTH 19TH STREET	PHILADELPHIA	PA	19121	FC	RESTORE (RESTRICTED PROTECT SUPPORT)	120,000
HARLEM CHILDREN'S ZONE	35 EAST 125TH STREET	NEW YORK	NY	10035	FC	SUSTAINABILITY PLAN: BUILDING THE ENDOWMENT	2,000,000
HARVARD LAW SCHOOL	HARVARD LAW SCHOOL ALUMNI CENTER, 125 MOUNT AUBURN STREET, 5TH FL, CAMBRIDGE	BOSTON	MA	02138	FC	PROJECT MC ONE LEAVES - FORECLOSURE TASKFORCE	104,246
HENRY STREET SETTLEMENT	265 HENRY STREET	NEW YORK	NY	10002	FC	HOMERACE/SHELTER COLLABORATIVE PROJECT	150,000
HUMAN RIGHTS WATCH	350 FIFTH AVENUE, 34TH FLOOR	NEW YORK	NY	10018	FC	DEVELOPING HUMAN RIGHTS ALLIES IN THE NON-WESTERN WORLD	98,400
INTERNATIONAL CENTER FOR TRANSITIONAL JUSTICE	5 HARVARD SQUARE, 24TH FLOOR	NEW YORK	NY	10034	FC	CORE SUPPORT (2012 - 2014)	275,000
INTERNATIONAL LEGAL FOUNDATION	111 JOHN STREET, SUITE 1040	NEW YORK	NY	10008	FC	HEADQUARTERS AND ADVOCACY SUPPORT	328,000
IPAB	P.O. BOX 9993	CAROL HILL	NC	27515	FC	CORE SUPPORT	333,334
IREDELL-STATESVILLE SCHOOLS	649 NORTH RACE STREET	STATESVILLE	NC	28677	FC	COMPASS: COLLABORATIVE ORGANIZATIONAL MODEL TO PROMOTE ALIGNED SUPPORT STRUCTURES-CORE SUPPORT	94,000
JEFCHO PROJECT	245 N. 29TH STREET, SUITE 902	NEW YORK	NY	10001	FC	HOMERACE BOUND	100,256
KAWERAK INC	PO BOX 548	NOME	AK	99762	FC	THE CALER PUNOHOMIYI SCHOLARSHIP PROGRAM	264,402
KIDZU CHILDREN'S MUSEUM	123 N. FRANKLIN STREET, SUITE B	CHARLE HILL	NC	10118	FC	RISE TO THE CHALLENGE: A COMMUNITY CHALLENGE GRANT FOR KIDZU CHILDREN'S MUSEUM'S NEW FACILITY	800,000
LEARNING OUTSIDE, INC.	PO BOX 718	CARRBORO	NC	27510	FC	CORE SUPPORT	114,384
LOCAL INITIATIVES SUPPORT CORPORATION	501 SEVENTH AVENUE, 7TH FLOOR	NEW YORK	NY	10018	FC	SUSTAINABLE COMMUNITIES INITIATIVE - MEET (ISCT-MEET)	78,000
LUCILE PACARD FOUNDATION FOR CHILDREN'S HEALTH	400 HAMILTON AVENUE, SUITE 340	PALO ALTO	CA	94301	FC	CHILDREN'S SURGICAL RESEARCH PROGRAM (RENEWAL)	1,000,000
MASSACHUSETTS ADVOCATES FOR CHILDREN	25 KINGSTON STREET	BOSTON	MA	02111	FC	TRAUMA AND LEARNING POLICY INITIATIVE	76,736
METROPOLITAN BOSTON HOUSING PARTNERSHIP	125 LINCOLN STREET	BOSTON	MA	02111	FC	HOUSING INTERVENTION AND TENANCY PRESERVATION PROJECT	150,350
HPT LEGAL SERVICES INC	299 BRADWAY, 4TH FLOOR	NEW YORK	NY	10007	FC	THREE-QUARTER HOUSE PROJECT	145,356
MUHLBERG COLLEGE	2400 N CHEN STREET	ALLENTOWN	PA	18134	FC	LEARNING, AND ATTITUDES	101,211
NATIONAL ALLIANCE TO END HOMELESSNESS	1618 R ST., NW, SUITE 410	WASHINGTON	DC	20005	FC	SETTING A PATH TOWARD ENDING HOMELESSNESS	140,200
NATIONAL CENTER FOR LEARNING DISABILITIES	381 PARK AVENUE SOUTH, SUITE 1401	NEW YORK	NY	10016	FC	NCLD CORE SUPPORT	339,934
NATIONAL CENTER FOR MISSING AND EXPLOITED CHILDREN	CHARLES B. WANG, INTERNATIONAL CHILDREN'S BUILDING, 699 PRINCE STREET	ALEXANDRIA	VIENNA	22314	FC	TECHNOLOGY ADVANCEMENT AND TOOLS - COMBATING ONLINE CHILD PORNOGRAPHY AND CYBER FORNS OF CHILD SEXUAL EXPLOITATION	474,380
NATIONAL BENJOP CITIZENS LAW CENTER	1444 EYE STREET, NW, SUITE 1103	WASHINGTON	DC	20005	FC	A HIDDEN CAUSE OF HOMELESSNESS: LOSS OF SOCIAL SECURITY THREATENS ELDERLY POOR	121,572

THE DAY FOUNDATION, USA
FORM 990-PF, PART XV, GRANTS PAID DURING THE YEAR

ORGANIZATION NAME	ORGANIZATION ADDRESS	CITY	STATE	ZIP	FOUNDATION STATUS	GRANT PURPOSE	GRANT AMOUNT
NATIONAL SENIOR CITIZENS LAW CENTER	1444 EYE STREET, NW, SUITE 1100	WASHINGTON	DC	20005	FC	A HIDDEN CAUSE OF BOTTLENECKS: LOGS OF SOCIAL SECURITY THREATENS ELDERLY FCOR	129,452
NATURAL RESOURCES DEFENSE COUNCIL, INC. NRDC	40 W 20TH STREET, 11TH FLOOR, NEW YORK	NEW YORK	NY	10011	FC	NOO CLEAN ENERGY TRANSMISSION PLANNING PROJECT	200,000
NATURAL RESOURCES DEFENSE COUNCIL, INC. NRDC	40 W 20TH STREET, 11TH FLOOR	NEW YORK	NY	10011	FC	CHINA RESPONSIBLE SOURCING INITIATIVE AND CHINA SUSTAINABLE CITIES PROJECT	500,000
NEW DESTINY HOUSING CORPORATION	12 W 37TH STREET, 7TH FLOOR	NEW YORK	NY	10019	FC	BEYOND SHELTER - SOLUTIONS TO FAMILY HOMELESSNESS	109,381
NEW ENGLAND AQUARIUM	CENTRAL WHARF	BOSTON	MA	02110	FC	MARINE CONSERVATION ACTION FUND -RENEWAL 2012-2015	50,000
NEW VENTURE FUND	1201 CONNECTICUT AVE., SUITE 300	WASHINGTON	DC	20036	FC	TAR SANDS CAMPAIGN	250,000
PATHWAYS TO HOUSING	186 E. 123RD STREET, SUITE 401	NEW YORK	NY	10035	FC	HOUSING FIRST PARTNERSHIP	235,843
PEW CHARITABLE TRUSTS	301 E STREET, NW	WASHINGTON	DC	20004	FC	UNRESTRICTED PROGRAMME GRANT: OCEANS NORTH - PROTECTING LIFE IN THE ARCTIC	25,000
PEW CHARITABLE TRUSTS	301 E STREET, NW	WASHINGTON	DC	20004	FC	UNRESTRICTED PROGRAMME GRANT: GLOBAL OCEAN LEGACY	500,000
PHILADELPHIA ASSOCIATION OF COMMUNITY DEVELOPMENT CORPORATIONS	1315 WALNUT STREET, SUITE 1600	PHILADELPHIA	PA	19107	FC	COSE GRANT	200,000
PROCHORO US	2121 DECATUR PLACE NW	WASHINGTON	DC	20008	FC	CHANGING THE NORMS: A GLOBAL INITIATIVE TO PROMOTE MEN'S INVOLVEMENT IN CAREGIVING AND IN NON-VIOLENT RELATIONSHIPS WITH CHILDREN (CORE SUPPORT)	480,554
PROTEUS FUND - INTERNATIONAL HUMAN RIGHTS FUNDERS GROUP	C/O PROTEUS FUND, 13 RESEARCH DRIVE, SUITE B	AMHERST	MA	01002	FC	CORE SUPPORT	100,000
RESEARCH INSTITUTE FOR LEARNING AND DEVELOPMENT -- RILD	4 HILLTOP DRIVE, SUITE 20	LEXINGTON	MA	02421	FC	ONLINE EXECUTIVE FUNCTIONING CURRICULUM	100,000
SAFE HORIZON	2 LAFAYETTE STREET, THIRD FLOOR	NEW YORK	NY	10007	FC	UNRESTRICTED SUPPORT TO THE ANTI-TRAFFICKING PROGRAMME	213,500
SAINT FRANCIS HOUSE, INC.	ST FRANCIS HOUSE, PO BOX 120499, ESSEX STATION	BOSTON	MA	02111	FC	MOVING AHEAD PROGRAM EXPANSION	90,000
STUDENT U	3116 ACADEMY ROAD	DURHAM	NC	27707	FC	COMPLETING THE STUDENT U PIPELINE	150,000
SUSTAINABLE FISHERIES PARTNERSHIP	7744 14TH AVE SW	SEATTLE	WA	98106	FC	ENGAGING SEAFARERS SUPPLY CHAINS TO SUPPORT FISHERIES SUSTAINABILITY IN CONTINENTAL EUROPE	204,288
THE ASIAN AMERICAN LEGAL DEFENSE AND EDUCATION FUND- DALZEP	99 HOBSON ST, 12TH FL	NEW YORK	NY	10013	FC	ANTI-TRAFFICKING INITIATIVE	75,000
THE CENTER FOR JUSTICE AND ACCOUNTABILITY	870 MARKET STREET, SUITE 608	SAN FRANCISCO	CA	94102	FC	GENERAL SUPPORT	350,000
THE ENERGY FOUNDATION	331 BATTERY STREET, 5TH FLOOR	SAN FRANCISCO	CA	94111	FC	CHINA SUSTAINABLE ENERGY PROGRAM	750,000
THE HOPE PROGRAM	1 SMITH STREET #4, BROOKLYN,	NEW YORK	NY	11201	FC	INCREASING DEVELOPMENT CAPACITY THROUGH STAFFING AND DATABASE	169,814
THE LEGAL AID SOCIETY	199 WATER STREET	NEW YORK	NY	10039	FC	HOMELESS RIGHTS PROJECT	150,000
TIDES CENTER	1014 TORSEY AVE	SAN FRANCISCO	CA	94129	FC	YOUTH FORWARD	116,103
UNIVERSITY OF NORTH CAROLINA GENERAL ADMINISTRATION	UNC GENERAL ADMINISTRATION, 910 RALEIGH RD., PO BOX 2689	CHAPEL HILL	NC	27515	FC	SUPPORTING TRANSITION, ACCESS AND PERSISTENCE: A USC-SYSTEM PROJECT SUPPORTING STUDENTS WITH LEARNING DIFFERENCES - PHASE 2	1,000,000
UNIVERSITY SETTLEMENT SOCIETY OF NEW YORK, INC	184 ELDRIDGE STREET	NEW YORK	NY	10002	FC	PROJECT HOME- BROOKLYN	125,000
URGENT ACTION FUND FOR WOMEN'S HUMAN RIGHTS	333 VALENCIA STREET, SUITE 250	SAN FRANCISCO	CA	94103	FC	RAPID RESPONSE GRANT-MAKING PROGRAMS	100,000
WILDLIFE CONSERVATION SOCIETY	2300 SOUTHERN BOULEVARD	BROOKLYN	NY	10460	FC	SUSTAINABLE FISHERIES AND EFFECTIVE MANAGEMENT OF MARINE PROTECTED AREAS IN BELIZE: LEVERAGING FIELD SUCCESS FOR NATIONAL SOLUTIONS	499,261
WILDLIFE CONSERVATION SOCIETY	2300 SOUTHERN BOULEVARD	BROOKLYN	NY	10460	FC	SUSTAINABLE FISHERIES AND EFFECTIVE MANAGEMENT OF MARINE PROTECTED AREAS IN BELIZE: LEVERAGING FIELD SUCCESS FOR NATIONAL SOLUTIONS	502,679
WOMEN'S COMMUNITY REVITALIZATION PROJECT	407 FAIRHURST AVENUE	PHILADELPHIA	PA	19123	FC	PHILADELPHIA PUBLIC LAND FOR PUBLIC BENEFIT INITIATIVE	97,100

ORGANIZATION NAME	ORGANIZATION ADDRESS	CITY	STATE	ZIP	FOUNDATION STATE	GRANT PURPOSE	GRANT AMOUNT
WOMEN'S REFUGEE COMMISSION	122 EAST 42ND STREET, 11TH FLOOR	NEW YORK	NY	10188-1289	FC	PROTECTION BY BUILDING AGENCY AND SOCIAL CAPITAL IN ADOLESCENT GIRLS	192,496
WOMEN'S REFUGEE COMMISSION	122 EAST 42ND STREET, 11TH FLOOR	NEW YORK	NY	10168-1289	FC	PROTECTION BY BUILDING AGENCY AND SOCIAL CAPITAL IN ADOLESCENT GIRLS	220,435
WORLD EDUCATION INC	44 PARKBORTH STREET	BOSTON	MA	02210-1211	FC	YOUTH ON THE MOVE	176,080
CHARLE HILL-CARRERO YMCA (YMCA OF THE TRIANGLE)	980 MARTIN LUTHER KING JR. BLVD	CHAPEL HILL	NC	27514	FC	BOSCHONG CORE SUPPORT	50,000
ABDOORAHMAN BOGOMAND FOUNDATION	1666 CONNECTICUT AVENUE NW, SUITE 41C	WASHINGTON	DC	20009	FC	RETURN OF GRANT PAYMENT	(220,000)
TOTAL GRANTS PAID DURING THE YEAR							27,562,774

THE OAK FOUNDATION, USA
FORM 990-EF, PART XV, GRANTS APPROVED DURING THE YEAR

8191 15-1331186

ORGANIZATION NAME	ORGANIZATION ADDRESS	CITY	STATE	ZIP	FOUNDATION STATUS	GRANT PURPOSE	GRANT AMOUNT
ALASKA CONSERVATION FOUNDATION	611 H-6TH AVENUE, SUITE 300	ANCHORAGE	AK	99501	PC	THE ALASKA NATIVE FUND	157,242
RUPPEI BANHARUF FOUNDATION	7-112 HESLEY ROAD	SPRINGFIELD	VA	22150	PC	CHANGING THE WORLD: HOW SOCIETY DISCRIMINATES RACIALIZED HISTORY (VIDEO INTERVIEWS)	10,400
BOSTON MEDICAL CENTER CORPORATION	80 MASSACHUSETTS AVENUE, 18 TH FLOOR	BOSTON	MA	02116	PC	PREVENTING HOMELESSNESS FOR AT-RISK OLDER ADULTS	113,990
ROSHANIA-HARVARD SCHOOL OF PUBLIC HEALTH AIDS INITIATIVE	DEPARTMENT OF IMMUNOLOGY AND INFECTIOUS DISEASES, HARVARD SCHOOL OF PUBLIC HEALTH, BLDG. 2, RM. 420 651 HUNTINGTON AVENUE	BOSTON	MA	02115	PC	TO GIVE WOMEN AND CHILDREN OF SOUTHERN AFRICA FREEDOM	1,186,670
BOWERY RESIDENTS COMMITTEE	324 LAFALETTE STREET, 8TH FLOOR	NEW YORK	NY	10012	PC	MOVING HOME	51,653
BOSTON BAY NATIVE ASSOCIATION	PO BOX 310	DORCHESTER	MA	01916	PC	BUILDING CAPACITY FOR COMMUNITY-BASED MARINE MAMMAL CONSERVATION IN BOSTON BAY	107,677
CALIFORNIA STATE UNIVERSITY, NORTHRIIDGE	1811 NORTHOFF STREET	NORTHRIIDGE	CA	91330	PC	ADDRESSING LEARNING DIFFERENCES THROUGH ON-LINE MODULES IN NEURODEVELOPMENT	50,000
CAPITOL ENLIGHTENMENT FOR INTERNATIONAL PEACE	1779 MASSACHUSETTS AVE NW	WASHINGTON	DC	20036	PC	RUSSIA IN GLOBAL DEBATES	211,028
CARNEGIE ENLIGHTENMENT FOR INTERNATIONAL PEACE	1779 MASSACHUSETTS AVE NW	WASHINGTON	DC	20036	PC	ILLUMINATING AND MANAGING THE CLIMATE IMPACTS OF UNCONVENTIONAL OILS	100,130
CENTER FOR COMMUNITY CHANGE	1535 V STREET, N.W.	WASHINGTON	DC	20009	PC	CORE GRANT	480,000
CENTER FOR COMMUNITY PROGRESS	42 GARLAND STREET, SUITE A	FLINT	MI	48903	PC	EXPANSION PROJECT	300,043
CENTER FOR RESPONSIBLE LENDING	302 WEST MAIN STREET	DURHAM	NC	27701	PC	CORE SUPPORT	250,000
CENTER FOR URBAN COMMUNITY SERVICES, INC. THE	198 E. 121ST STREET	NEW YORK	NY	10035	PC	THE WELLNESS PROJECT	106,501
CITIZENS HOUSING AND PLANNING ASSOCIATION	18 TREMONT STREET, SUITE 401	BOSTON	MA	02108	PC	CORE GRANT	600,000
CLIMATEWORKS FOUNDATION, USA	235 MONTGOMERY STREET, SUITE 1360	SAN FRANCISCO	CA	94104	PC	STRENGTHENING CLIMATEWORKS FOUNDATION THROUGH CORE SUPPORT	1,200,000
COLLEGE OF NEW ROCHELLE	29 CASTLE PLACE	NEW ROCHELLE	NY	10875	PC	INTERNSHIP PROGRAM AT THE SCHOOL OF NEW RESOURCES (LEARNING GRANT)	8,685
COMMUNITY LEGAL SERVICES INC	1424 CHESTNUT STREET	PHILADELPHIA	PA	19102	PC	PROTECTING LOW INCOME HOMES - HOUSING ADVOCACY	200,000
CORAL REEF ALLIANCE	1330 BROADWAY, SUITE 1602	OAKLAND	CA	94612	PC	CORREZIA BANKSI PRESERVING AND CONNECTING A CORAL GARDEN	150,459
CRAIG LAW CENTER	917 SW OAK ST., SUITE 417	FORTLAND	OR	97125	PC	STRATEGIC SUPPORT FOR THE ALASKA ESKIMO WELFARE COMMISSION	52,740
DUKE UNIVERSITY	PO BOX 90077	DURHAM	NC	27708-0077	PC	PROGRAM IN ENVIRONMENTAL AND ENERGY POLICY	900,000
ELON UNIVERSITY	MOONEY BUILDING, 2105 CAMPUS BOX	ELON	NC	27244	PC	IT TAKES A VILLAGE 2013	119,393
ENVIRONMENTAL DEFENSE INC	HEADQUARTERS OFFICE, 257 PARK AVENUE SOUTH	NEW YORK	NY	10010	PC	1) GREENING THE SUPPLY CHAIN; 2) ESTABLISHING GREEN PROCUREMENT GUIDELINES IN CHINA	500,000
EYE TO EYE NATIONAL, INC.	1430 BROADWAY, 6TH FLOOR	NEW YORK	NY	10018	PC	EYE TO EYE CORE SUPPORT	65,525
FORAKER GROUP	161 KLEVIN STREET	ANCHORAGE	AK	99508	PC	ORGANIZATIONAL DEVELOPMENT SUPPORT FOR RURAL ALASKA NON-PROFIT SECTOR	95,000
FUNDERS TOGETHER TO END HOMELESSNESS	89 S STREET, 8TH FLOOR/240 WEBBURY STREET, 2ND FLOOR	BOSTON	MA	02111	PC	FUNDERS TOGETHER TO END HOMELESSNESS - CORE	200,000
GREATER BOSTON LEGAL SERVICES	197 FRIEND STREET	BOSTON	MA	02114	PC	GRS HOUSING PROGRAMS: CORE SUPPORT	200,000
HABITAT FOR HUMANITY PHILADELPHIA (NHPH)	1829 NORTH 19TH STREET	PHILADELPHIA	PA	19121	PC	RESTORE (RESTRICTED PROJECT SUPPORT)	120,000
HARLEM CHILDREN'S ZONE	35 EAST 125TH STREET	NEW YORK	NY	10035	PC	SUSTAINABILITY PLAN: BUILDING THE FUTURE	4,000,000
HARVARD LAW SCHOOL	HARVARD LAW SCHOOL ALUMNI CENTER, 125 MOUNT AUBURN STREET, 6TH FL., CAMBRIDGE	BOSTON	MA	02138	PC	PROJECT NO ONE LEAVES - FORECLOSURE TASKFORCE	28,497
HOUSING ALLIANCE OF PENNSYLVANIA	309 FLORENCE AVENUE	JACKSONTOWN	PA	19046	PC	STATE HOUSING TRUST FUND CAMPAIGN	150,000
IREDELL-STATESVILLE SCHOOLS	949 NORTH RACE STREET	STATESVILLE	NC	28677	PC	CHESAPEAKE COLLABORATIVE ORGANIZATIONAL MODEL TO PROMOTE ALIGNED SUPPORT STRUCTURES-CORE SUPPORT	54,300

JERICO PROJECT	245 W. 25TH STREET, SUITE 902	NEW YORK	NY	10001	PC	HOMEWARD BOUND	201,625
JUST ASSOCIATES (JAS)	2040 S STREET NW	WASHINGTON	DC	20009	PC	CORE SUPPORT FOR WOMEN'S MOVEMENT BUILDING	50,000
KAMERAR INC	PO BOX 940	ROME	AK	99762	PC	THE CALEB PUNGOYI SCHOLARSHIP PROGRAM	679,353
KIDRU CHILDREN'S MUSEUM	123 W. FRANKLIN STREET, SUITE B	CHAPEL HILL	NC	10119	PC	RISE TO THE CHALLENGE: A COMMUNITY CHALLENGE GRANT FOR KIDRU CHILDREN'S MUSEUM'S NEW FACILITY	750,000
LAFAYETTE OUTSIDE, INC.	PO BOX 718	CARPBOBO	NC	27510	PC	CORE SUPPORT	233,107
MICHELLE PACHARD FOUNDATION FOR CHILDRENS HEALTH	400 HAWKINS AVENUE, SUITE 340	PALO ALTO	CA	94301	PC	CHILDREN'S SCROLOGICAL RESEARCH PROGRAM (RENEWAL)	1,000,000
NY LEGAL SERVICES INC	289 BROADWAY, 4TH FLOOR	NEW YORK	NY	10007	PC	THREE-QUARTER HOUSE PROJECT	106,507
HUHLBERG COLLEGE	2400 H CHEM STREET	ALLENTONY	PA	16104	PC	LEADERS FOR CHANGE: CHANGING BRAINS, LEARNING, AND ATTITUDE	207,504
NATIONAL CENTER FOR MISSING AND EXPLOITED CHILDREN	CHARLES B HANG, INTERNATIONAL CHILDREN'S BUILDING, 699 PRINCE STREET	ALEXANDRIA	VERGINIA	22314	PC	TECHNOLOGY ADVANCEMENT AND TOOLS - COMBATING ONLINE CHILD PORNOGRAPHY AND OTHER FORMS OF CHILD SEXUAL EXPLOITATION	391,749
NATIONAL HEROIC CITIZENS LAW CENTER	1444 EYE STREET, NW, SUITE 1100	WASHINGTON	DC	20005	PC	A HIDDEN CADRE OF HOMELESSNESS. LOSS OF SOCIAL SECURITY THREATENS ELSEWY POOR	126,864
NATIONAL RESOURCES DEFENSE COUNCIL, INC.	40 W 20TH STREET, 11TH FLOOR	NEW YORK	NY	10011	PC	CHINA RESPONSIBLE SOURCING INITIATIVE AND CHINA SUSTAINABLE CITIES PROJECT	500,000
NEW PROFIT INC.	200 CLARENDON STREET	BOSTON	MA	02116	PC	LD SEX DOMINANCE EDUCATION INITIATIVE	2,000,000
PATHWAYS TO HOUSING	186 E. 123RD STREET, SUITE 401	NEW YORK	NY	10035	PC	HOUSING FIRST PARTNERSHIP	235,840
PEM CHARITABLE TRUSTS	901 E STREET, NW	WASHINGTON	DC	20004	PC	UNRESTRICTED PROGRAMME GRANT: GLOBAL OCEAN LEGACY	500,000
PHILADELPHIA ASSOCIATION OF COMMUNITY DEVELOPMENT CORPORATIONS	1115 WALNUT STREET, SUITE 1600	PHILADELPHIA	PA	19107	PC	CORE GRANT	600,000
RESEARCH INSTITUTE FOR LEARNING AND DEVELOPMENT -- RILD	4 MILITARY DRIVE, SUITE 2C	LEXINGTON	MA	02421	PC	ONLINE EXECUTIVE FUNCTIONING CURRICULUM	105,000
THE LEGAL AID SOCIETY	199 WATER STREET	NEW YORK	NY	10038	PC	HOMELESS RIGHTS PROJECT	150,000
THE MAYOR'S FUND TO ADVANCE NEW YORK CITY	253 BROADWAY, SUITE 9	NEW YORK	NY	10007	PC	THE ADVANTAGE ACADEMY	63,161
WIDES CENTER	1014 TURNER AVE	SAN FRANCISCO	CA	94129	PC	YOUTH FORWARD	116,080
UNIVERSITY SETTLEMENT SOCIETY OF NEW YORK, INC	184 ELDORADO STREET	NEW YORK	NY	10002	PC	PROJECT HOME - BROOKLYN	248,000
US SOCCER FOUNDATION	2211 CONNECTICUT AVENUE, NW SUITE 500	WASHINGTON	DC	20036	PC	SOCCER FOR SUCCESS	179,405
WOMEN'S REFUGEE COMMISSION	122 EAST 42ND STREET, 11TH FLOOR	NEW YORK	NY	10168-1289	PC	DETENTION AND ASYLUM PROGRAM	150,000
TOTAL GRANTS APPROVED DURING THE YEAR							20,666,554