

SX CORE

BY TEAM XECUTER

Version 1.1

Getting Started

Required Items:

- ❖ MicroSD with SX OS [boot.dat] – [Download](#)
- ❖ Xecuter SX Core
- ❖ Switch v1 (Erista) / v2 (Mariko)
- ❖ Fine-Tip Soldering Iron (340c) / Solder
- ❖ Tri-Wing Y00 and Phillips #00
- ❖ Thermal Paste

Recommended Tools:

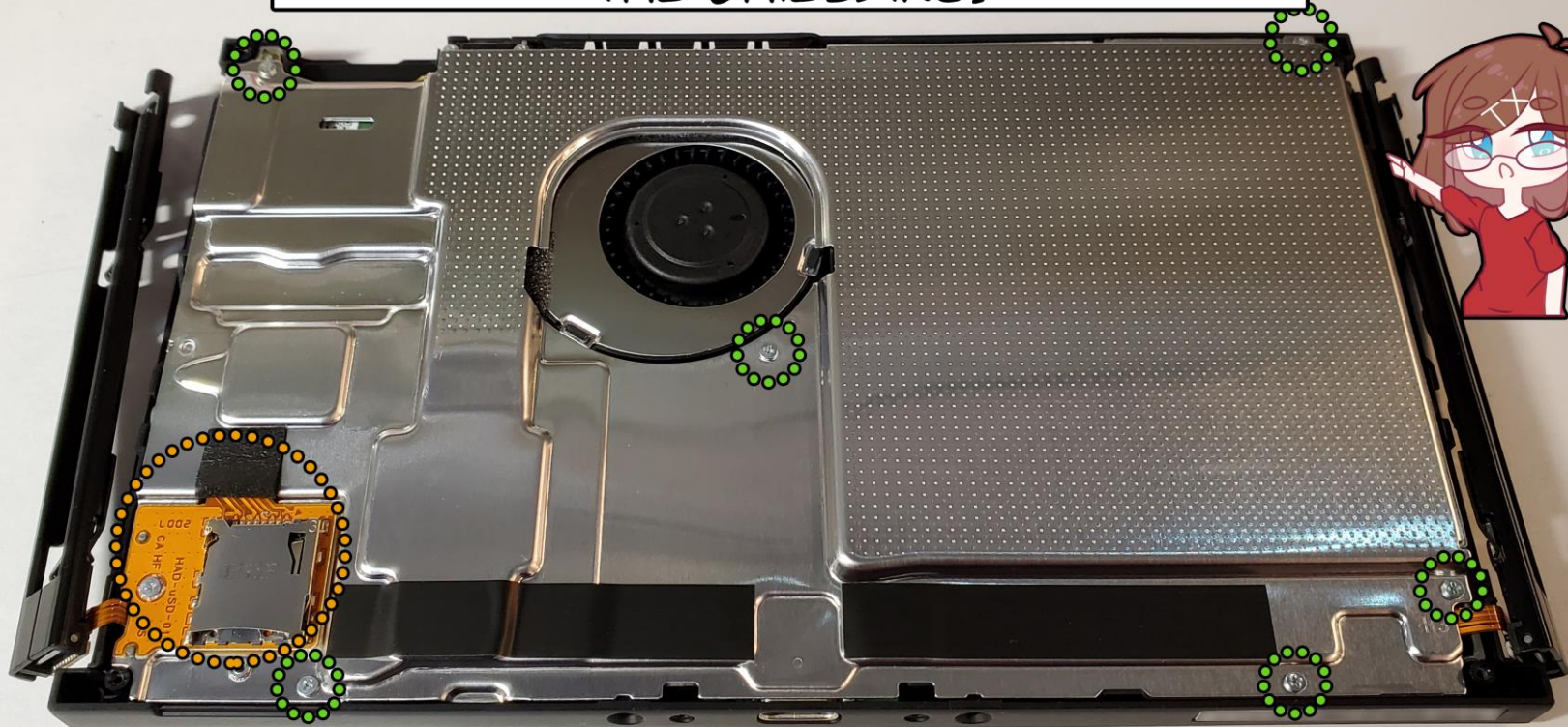
- ❖ Liquid Flux
- ❖ Microscope or Jeweler's Glasses
- ❖ Isopropyl Alcohol (91% or Higher)
- ❖ Cotton Swabs / Micro Swabs
- ❖ Tin Snips / Cutters
- ❖ Kapton / Electrical Tape



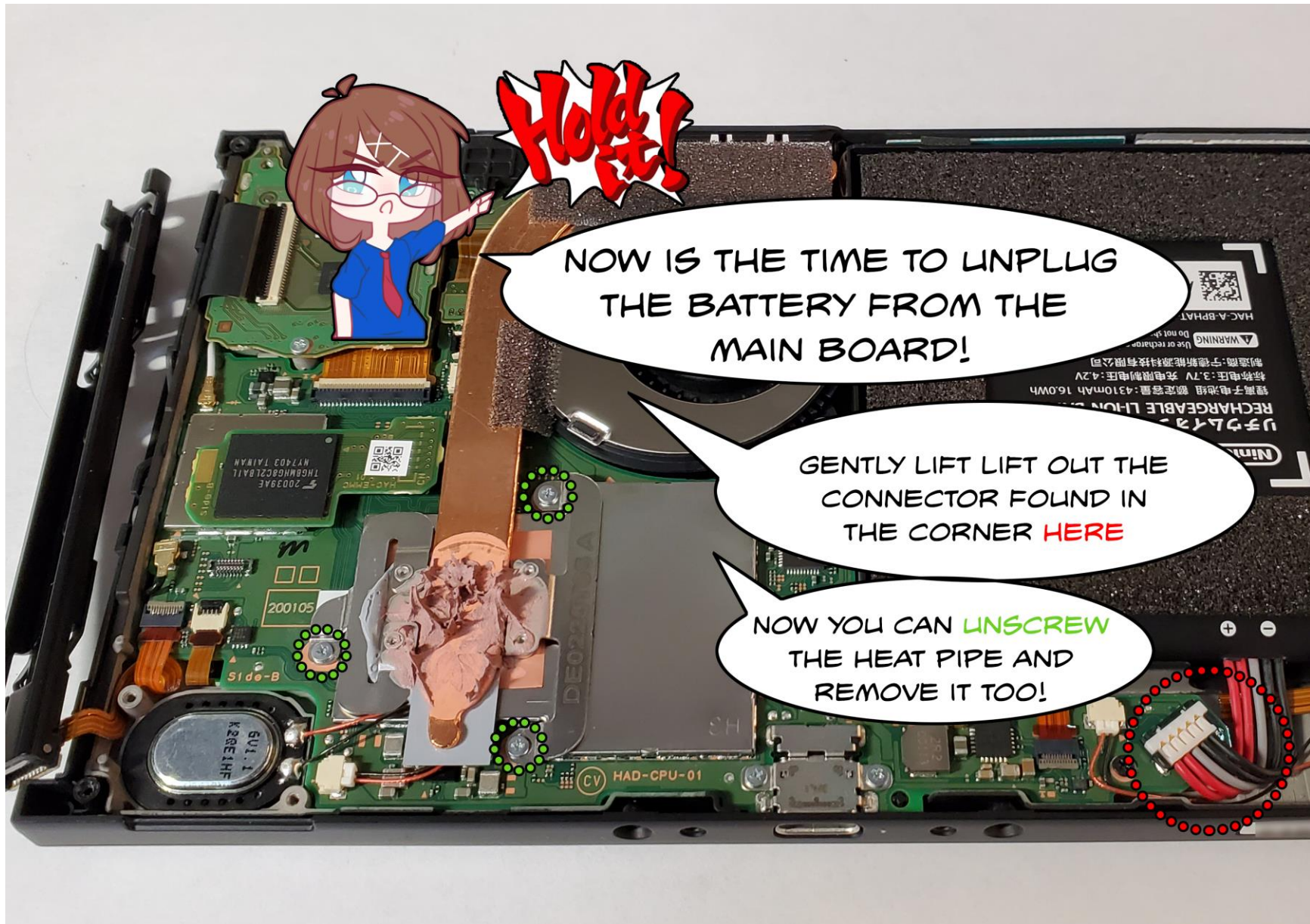
START OFF BY REMOVING THE 4 TRI-WING SCREWS AND 6 PHILLIPS SCREWS. DON'T FORGET TO TAKE OUT YOUR GAME AND SD CARD!

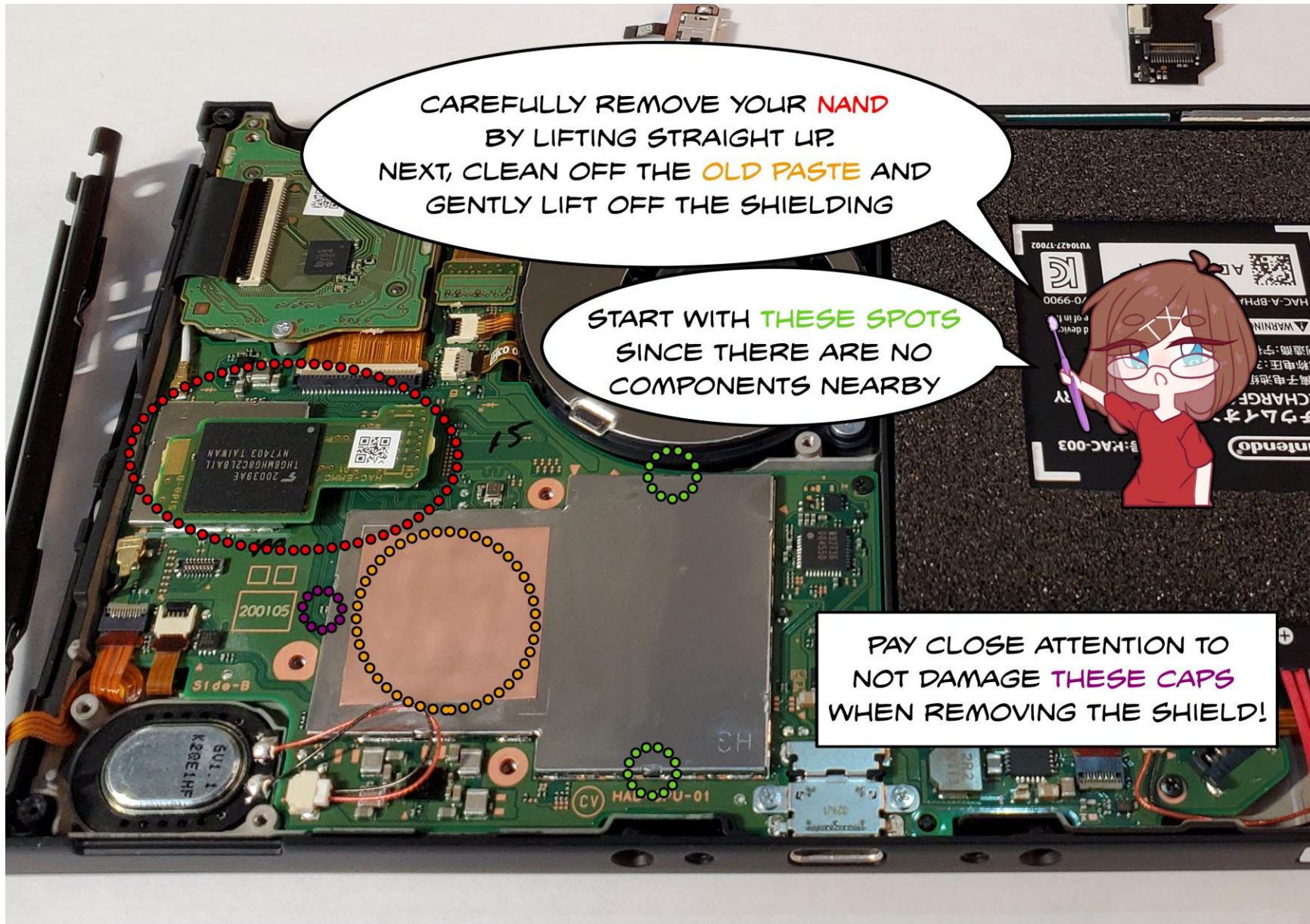


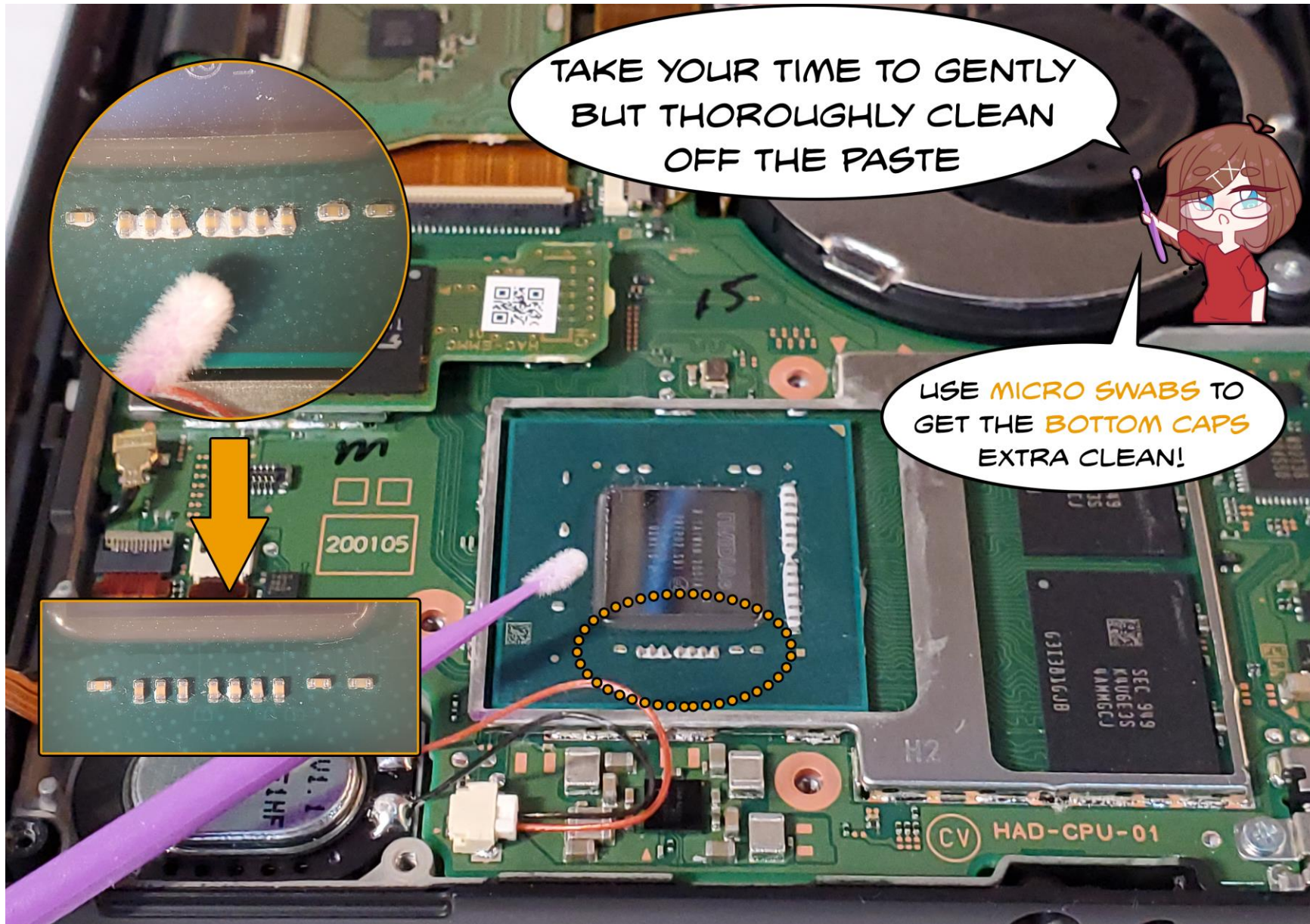
WATCH OUT FOR THE JOYCON FLEX CABLES AS YOU UNSCREW AND REMOVE THE SHIELDING!

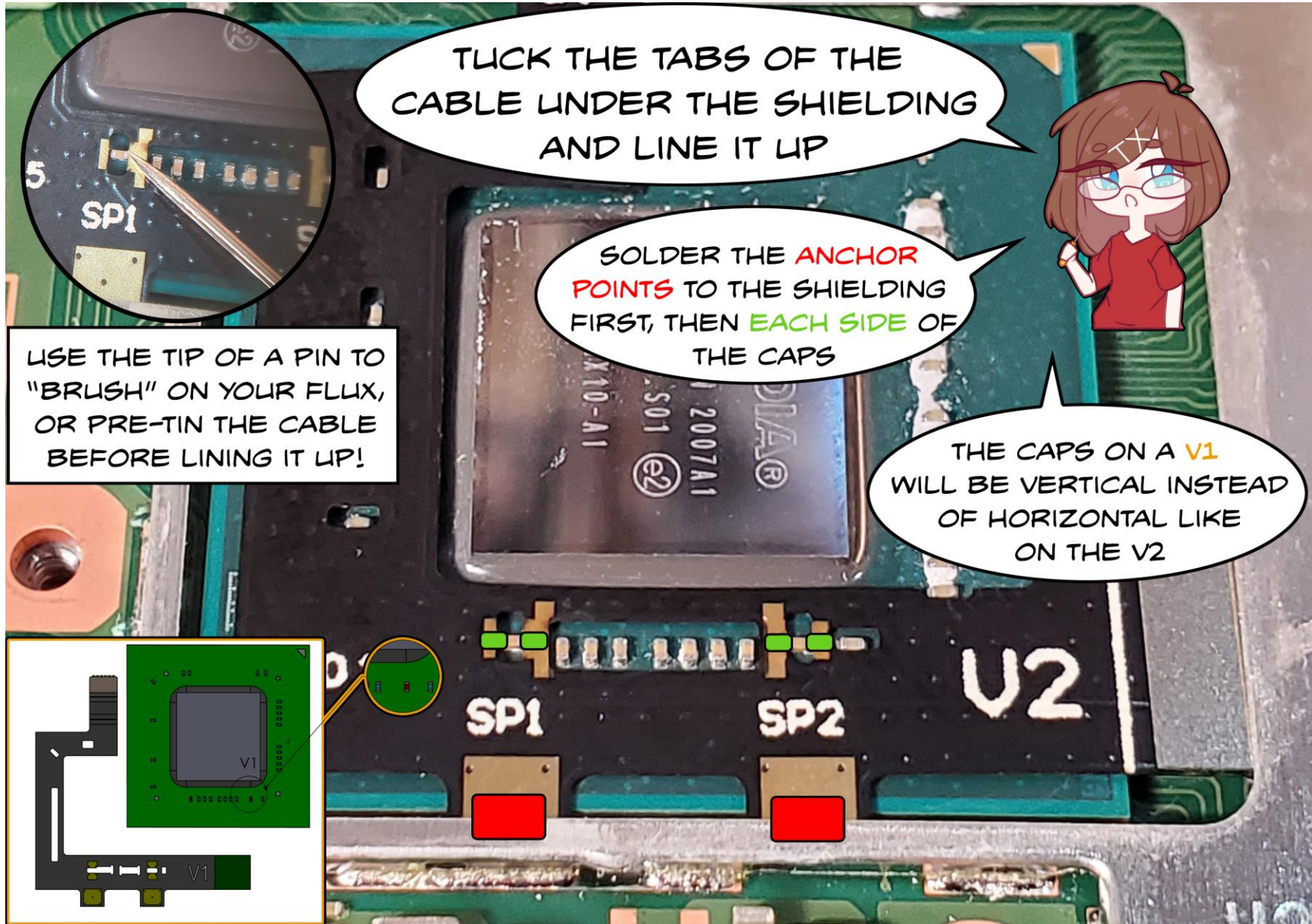


THE **SD READER** NEEDS TO BE DISCONNECTED FROM UNDER THE FOAM BLOCK. LOOK OUT FOR THE THERMAL PUTTY UNDER THE SHIELD!

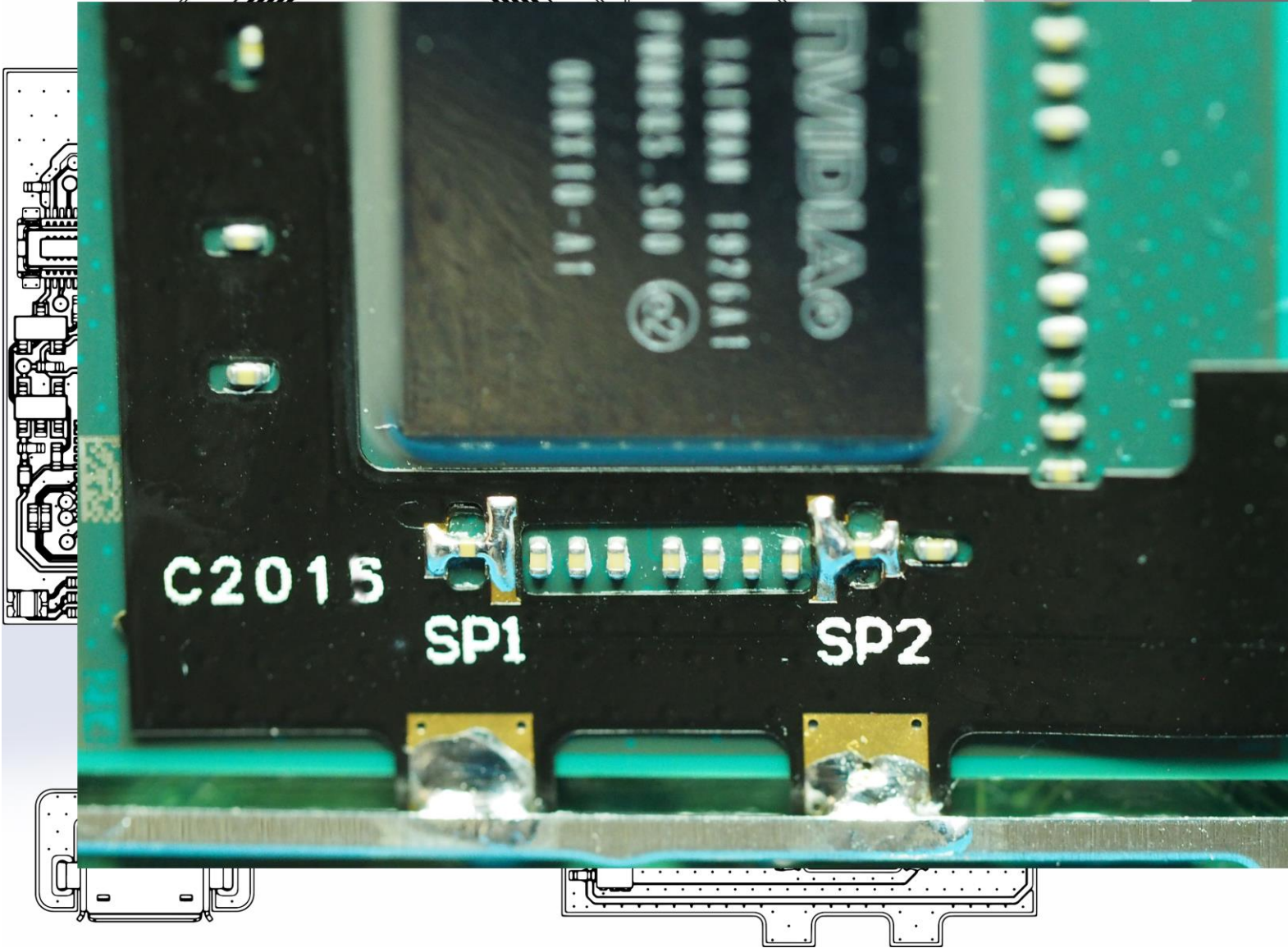


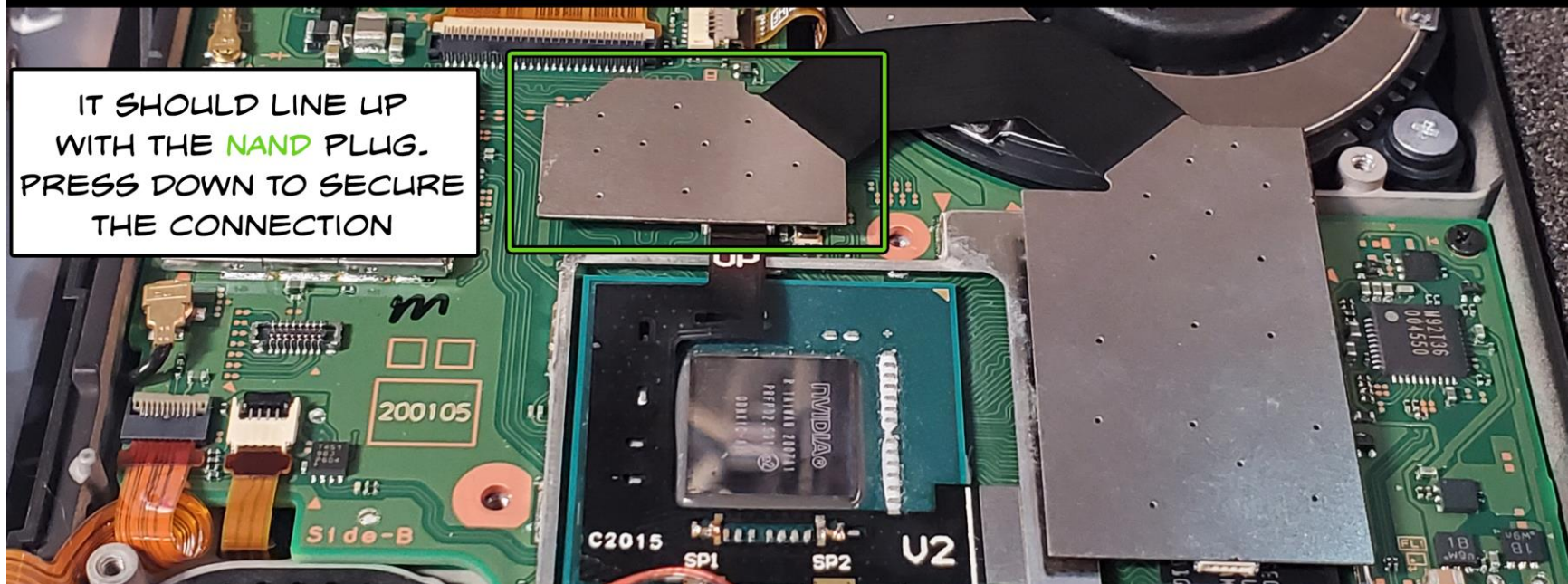
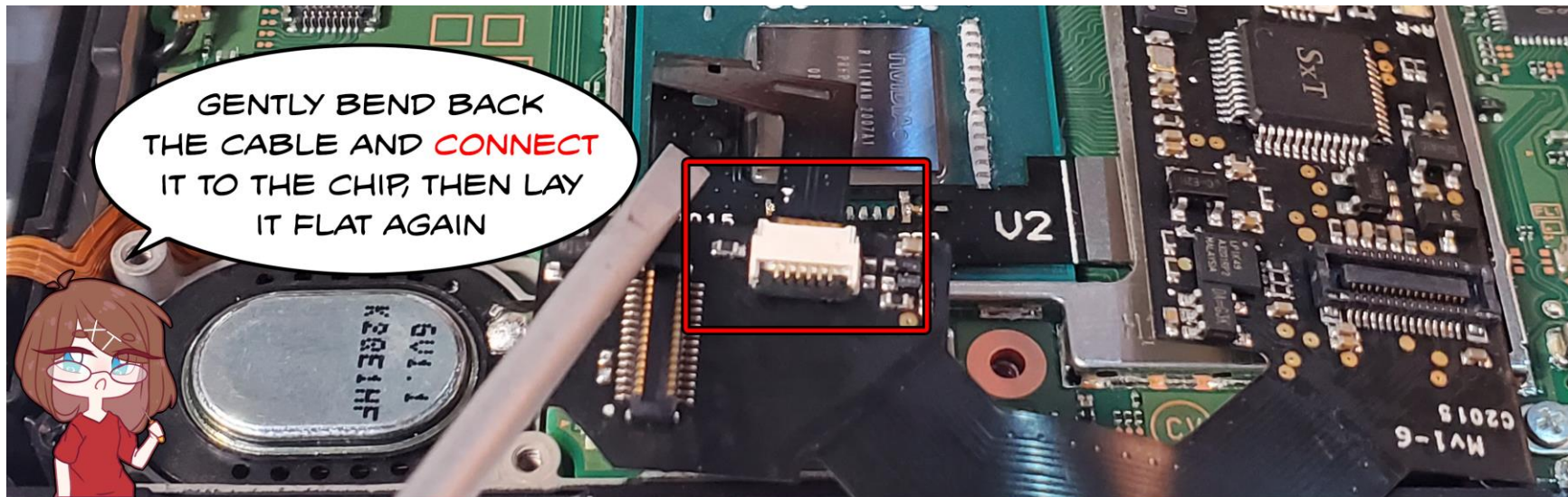






YOUR INSTALL SHOULD LOOK SOMETHING LIKE THIS:



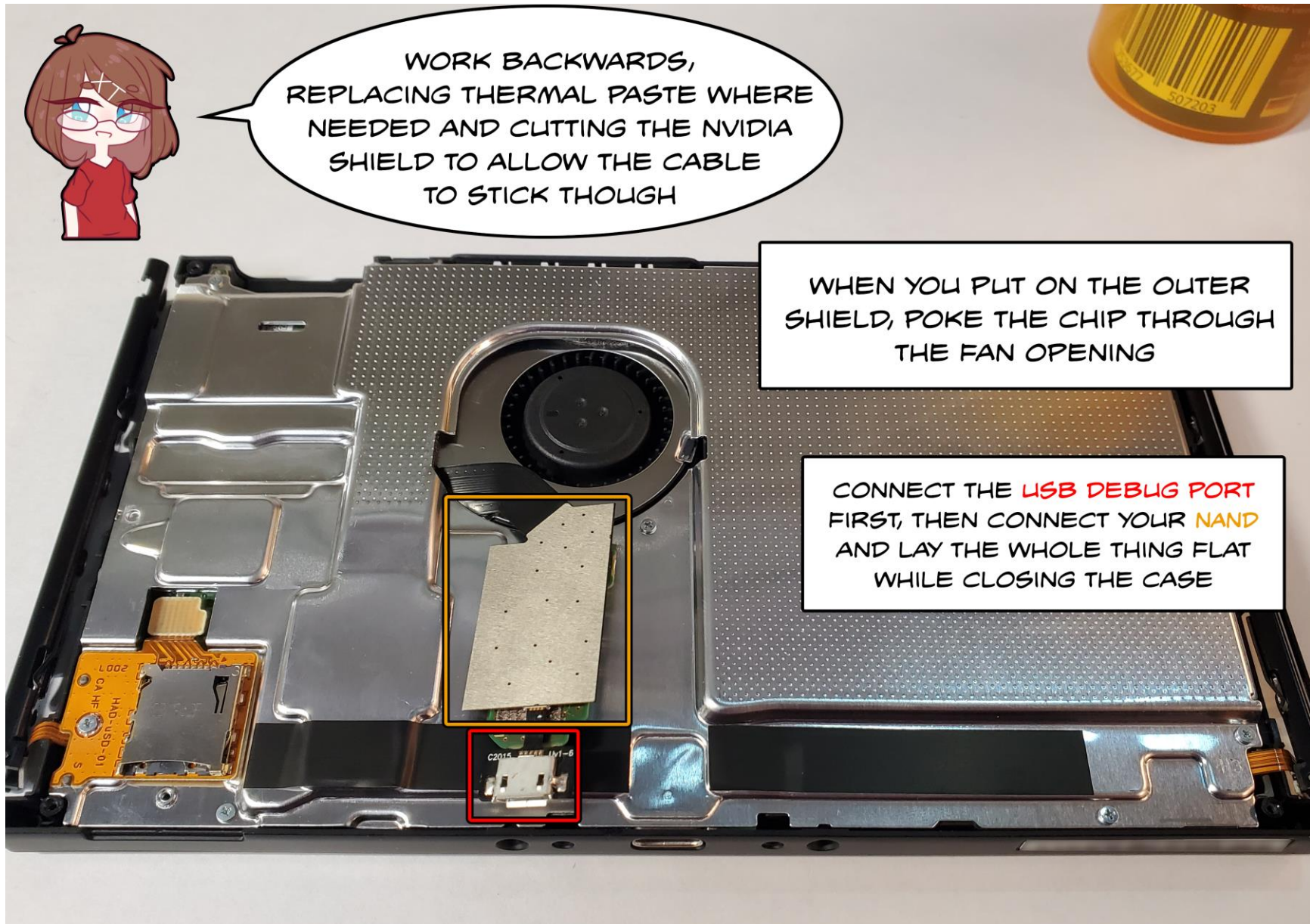




WORK BACKWARDS,
REPLACING THERMAL PASTE WHERE
NEEDED AND CUTTING THE NVIDIA
SHIELD TO ALLOW THE CABLE
TO STICK THROUGH

WHEN YOU PUT ON THE OUTER
SHIELD, POKE THE CHIP THROUGH
THE FAN OPENING

CONNECT THE **USB DEBUG PORT**
FIRST, THEN CONNECT YOUR **NAND**
AND LAY THE WHOLE THING FLAT
WHILE CLOSING THE CASE





FAQ

Q - How difficult is this installation?

A - This is an advanced installation, if you don't have the proper tools or experience, we recommend contacting your local tiny soldering guy or mod shop to have the installation done for you.

Q - The Switch boots to the bootloader, but gets stuck on the JoyCon logo afterwards

A - You will need to ensure you did not damage [these caps](#) when removing the shielding. If they are damaged, you can order replacement SMD 0.1µF 10v 0201 components to replace them to fix the issue.

Q - The light turns pink and system won't boot.

A - This means the chip is having trouble talking to the NAND, typically from bad solder joints.

Q - The light turns green and boots to the bootloader, but the Switch OS won't boot.

A - Make sure you are using a FAT32 formatted SD card, as you may be missing the exFAT driver. You may also need check the connection of SP1.

Q - I need more help!

A - Join the support forums (<https://team-xecuter.com/community/>) or chat (<https://xecuter.rocks/>).

