

# billboard Country Update

BILLBOARD.COM/NEWSLETTERS

SEPTEMBER 9, 2019 | PAGE 1 OF 22

## INSIDE

Luke Bryan's "Boots"  
Take A Big Step  
>page 4

Hurricane Relief  
Leads Country  
Benefits  
>page 11

Carrie, Church:  
Country's Good Sports  
>page 12

Aldean Fronts  
Truckload Of Albums  
>page 12

Makin' Tracks:  
Kip Moore's Rocking  
"She's Mine"  
>page 17

Country Coda:  
Charley Pride's  
Splashy "Jamaica"  
>page 22

BILLBOARD COUNTRY UPDATE

[Tom.Roland@billboard.com](mailto:Tom.Roland@billboard.com)

## Ken Burns' *Country Music* Embraces A Genre's Working-Class Connection



In classic storyteller fashion, **Ken Burns'** Florentine Films team saved the most powerful moment in the upcoming PBS series *Country Music* for the last of its eight episodes.

**Kathy Mattea** had fought an uphill battle to record "Where've You Been," a ballad about an aging couple separated in a hospital. Despite an unconventional story and production, it became an unlikely hit in 1989, and Mattea recounts in the series how a woman once appeared in a meet-and-greet line, exchanging tears and nods with Mattea as she got an autograph and a hug without saying a word.

"Her husband just leaned down, and he grabbed her arm when they were walking away," recalls Mattea in the installment. "He said, 'She buried her mom this morning, but she really wanted to come and see you tonight.' And I mean, that's it. *That's it.* That's country music."

That's country music the genre. And that's *Country Music* the production. The idiom itself was built on three-minute story-songs that hone in on some aspect of life's truths. The docuseries, which launches Sept. 15, likewise uses storytelling to connect the dots from the genre's rural beginnings to its multiplatinum apex during the **Garth Brooks** era. In the process, *Country Music* employs a parade of acts who emerged from mostly poor beginnings — such as **Loretta Lynn**, **Johnny Cash**,

**Merle Haggard** and **The Carter Family** — to make a name for themselves by establishing a human connection through songs about life's emotional hardships.

"We say it's all good old boys and pickup trucks and hound dogs and six packs of beer," says Burns. "That is an honorable, and rather minor subgenre, of country music. But what it's really about is love and loss."

Burns' approach to documentaries is highly recognizable, thanks to previous treatments of *Baseball*, *The Civil War*, *Jazz* and *Vietnam*. The productions mesh vintage photos, sometimes-obscure



BURNS



MATTEA



DUNCAN

footage and expert, on-camera interviews to place a topic in the context of the culture.

That context is particularly important for *Country Music*, and its foundation is laid out in the first episode. Producer **Ralph Peer** ventured outside of New York in the 1920s to capture field recordings of ethnic music that might appeal to consumers outside the mainstream. Peer stumbled on hillbilly music when he was actually looking for blues musicians. Country, according to writer **Dayton Duncan's** script, represented people "who felt left out and looked down upon."

That perceived lack of appreciation has informed country's musicians, its fans and even its industry, all of whom have often

MATTEA: RETO STERCHI

# JASON ALDEAN "WE BACK"

THE DEBUT SINGLE FROM

9

IMPACTING SEPTEMBER 16TH



BMG

felt outsiders to the rest of the music business. That tenet is conveyed in *Country Music* mostly by artists — such as **Dolly Parton**, **Dwight Yoakam** and **Bill Anderson** — but also by **Bill C. Malone**, an historian whose 1968 book, *Country Music U.S.A.*, was a seminal document in logging the genre’s story.

“When he first came out 50 years ago with *Country Music U.S.A.*, the topic was deemed not worthy of that kind of scholarly attention,” says Duncan. “It’s part of what country music’s history is — always looked down upon as sort of a lesser form of culture and a lesser form of music and a lesser form of art. And if you’re writing about it, you’re therefore writing about a less important thing. We just don’t believe that.”

*Country Music* elevates the discussion, showing how artists used songs about the only topics they knew firsthand — life, death, love and blue-collar work — to connect with the masses who were like them. “Will the Circle Be Unbroken,” “Hey, Good Lookin’,” “Coal Miner’s Daughter” and “Folsom Prison Blues” are just some of the 500 songs in the series — and among the 105 in an accompanying five-disc box set, released by Sony Legacy — that explore those themes.

“It doesn’t have the sophistication or complication of classical music and some forms of jazz,” says Burns, “but that truth part — it’s mainlining universal human experiences.”

They’re not easy experiences, either. The series covers the battles faced by women such as **Kitty Wells** and **Reba McEntire** to succeed in country’s male-dominated industry. It demonstrates how outlaws such as **Waylon Jennings** and **Willie Nelson** skirted norms to outmaneuver the business. It explores the difficult paths taken by **DeFord Bailey** and **Charley Pride** as people of color in a predominantly white genre. And it looks at artists such as **Hank Williams** and **Keith Whitley**, whose lives were cut short by tragedy.

*Country Music* mines the life cycle of the genre just as the idiom’s songs have often reflected the life cycles of humanity, exemplified by the narrative in Mattea’s “Where’ve You Been,” written by **Jon Vezner** and **Don Henry**.

That song charts the arc of a relationship from first meeting through difficult moments to a husband and wife’s fragile final days.

Mattea, as the first artist to appear on-camera in episode 1, helps *Country Music* outline a similar journey for the genre, demonstrating how it has endured difficult economic periods and the tumult of some of its biggest stars to become a bedrock format in popular American culture. At its heart, the music provides a forum for listeners to discover their shared emotions through working-class tales.

“The whole thing that makes us stand up in front of people and play music is there’s a connection there that we’re reaching for,” says Mattea.

Which is why the story of the grieving fan in an autograph line is such a big moment for Mattea, and for *Country Music*. It confirms that a genre once thought of as second class has reached people in a profound way.

Burns similarly screened all eight episodes of *Country Music* for some of the series’ contributors, looking to discover if the Florentine Films project connected with the people who knew the genre best.

“At the end of it,” says Mattea, “Bill Malone looked up and said, ‘Thank you for validating my life’s work.’ It was something.”



Chris Lane (right) joined New England Patriots free safety Devin McCourty for a Pepsi NFL season kickoff event on Sept. 5.



Kane Brown visited with WNSH New York staff during a recent trip to the Big Apple. From left: RCA director of regional promotion Northeast Dan Nelson, WNSH personality Katie Neal, Brown, WNSH PD John Foxx and RCA Nashville senior vp promotion Dennis Reese.



Justin Moore headlined Sept. 1 during the Flora-Bama concert series in Pensacola, Fla. From left: Flora-Bama special events manager Keeley Mead, marketing/PR director Jenifer Parnell and director of entertainment Brandon Parnell, Moore and Outback Presents vp touring Dan Merker.

LANE: GETTY IMAGES FOR PEPSI; MOORE: CODY VILLALOBOS

# JASON ALDEAN

# "WE BACK"

THE DEBUT SINGLE FROM 9 IMPACTING SEPTEMBER 16TH



# JASON ALDEAN

**"WE BACK"**

THE DEBUT SINGLE FROM

9  
IMPACTING SEPTEMBER 16TH

BBR  
MUSIC GROUP

BBR

BMG

ON THE CHARTS JIM ASKER [jim.asker@billboard.com](mailto:jim.asker@billboard.com)

# Luke Bryan's 'Knockin' Boots' Scoots To No. 1 On Country Airplay; Sheryl Crow, Trisha Yearwood Debut In Top Country Albums Top 10



**Luke Bryan** banks his 21st No. 1 on *Billboard's* Country Airplay chart as "Knockin' Boots" (Capitol Nashville) ascends 2-1 on the list dated Sept. 14. The song reigns with a 7% gain to 39.8 million audience impressions in the week ending Sept. 8, according to Nielsen Music.

On the Hot Country Songs chart, which is fueled by airplay, streaming and sales data, "Boots" bumps 3-2 for its new high.

With "Boots," written by **Jon Nite**, **Hillary Lindsey** and **Gordie Sampson**, Bryan moves into a tie for the sixth-most Country Airplay No. 1s, matching **Jason Aldean** and **Keith Urban's** totals. Among all artists, **Kenny Chesney** has the most leaders (30), followed by **Tim McGraw** (29), **Alan Jackson**, **Blake Shelton** and **George Strait** (26 each).

"I'm so grateful to radio and the fans," says Bryan. "It's just mind-blowing. This song had me from the first time I heard it. It's a combination of fun, catchy and sexy, and I love watching how the crowd connects to it at the shows. It is definitely one of my favorites to do."

"Boots" is the first single from Bryan's upcoming seventh full-length. It follows "What Makes You Country," which peaked at No. 2 on Country Airplay in March, after he linked 13 leaders in a row (as a lead act and not including holiday fare). "Sunrise, Sunburn, Sunset" became his 13th straight No. 1, topping the tally for two weeks in September 2018.

**CROW FLIES IN** **Sheryl Crow's** *Threads* (Valory/Big Machine Label Group) arrives at a career-best No. 2 on Top Country Albums. In her lone prior appearance, *Feels Like Home* debuted and peaked at No. 3 in September 2013. *Threads* starts with 15,000 equivalent album units, with 14,000 in traditional sales.

The new set sports an array of collaborators from country, rock and Americana, including **Kris Kristofferson**, **Stevie Nicks** and **The Rolling Stones' Keith Richards**. Lead single "Prove You Wrong" (featuring Nicks and **Maren Morris**) bowed and peaked at No. 33 on the Country Airplay chart dated June 15.

**NEW 'GIRL'** **Trisha Yearwood's** *Every Girl* (Gwendolyn), her first album of all-new country material since 2007's *Heaven, Heartache and the Power of Love*, which entered and peaked at No. 10 on Top Country Albums, opens at No. 5 (11,000 units; 10,000 sold).

Yearwood adds her 14th top 10, a total that includes four No. 1s. She last led in December 2016 with *Christmas Together*, with husband **Garth Brooks**. (In March, *Let's Be Frank*, her tribute album to **Frank Sinatra**, one of her musical heroes, hit No. 2 on *Billboard's* Jazz Albums chart.)

"Every Girl in This Town," the first single from *Every Girl*, bullets at No. 34 on Country Airplay, up 6% to 5 million impressions.

Yearwood and Pearl/Gwendolyn Records GM **Lesly Simon** sat down for *Billboard's* *Chart Beat Podcast* on Sept. 4: "You lose your filter; that's not so good," said Yearwood with a laugh during the episode, about her mindset at this point in her life and career. "But, you also lose your inhibitions. There's a freedom that comes with time that allows you to just have fun. When I listen to this record back, I don't have one regret. I don't have any song I would've done differently. Whatever happens with it [commercially], I'm good, because I'm so happy with the way it came out. That's a freedom that comes with taking all the pressure off yourself."



**TOP 10 'VIBES'** **Chris Janson** attains his fourth Country Airplay top 10 as "Good Vibes" (Warner Music Nashville/WAR) rises 11-9, up 8% to 22 million in audience. He scores his first top 10 since "Drunk Girl," which rose to No. 7 last October.

**'SMALL' IS BIG** **Brantley Gilbert** and **Lindsay Ell's** "Whatever Happens in a Small Town" (Valory) hops 12-10 on Country Airplay (21.9 million, up 8%). Gilbert earns his eighth top 10 and Ell notches her first. ●

JOHN SHEARER/WIREIMAGE

SUBSCRIBE TO

**billboard**  
**COUNTRY**  
UPDATE

The country music industry's must-have source for news, charts, analysis and features

- EXCLUSIVE CHARTS including Hot Country Songs, Country Airplay, Top Country Albums, Country Streaming Songs and more!
- Weekly content including Makin' Tracks, On The Charts, a roundup of executive moves and timely analysis of the latest country news and trends
- Expert insight and commentary by Tom Roland and Jim Asker

SIGN UP FOR FREE DELIVERY EVERY MONDAY  
[BILLBOARD.COM/NEWSLETTERS](http://BILLBOARD.COM/NEWSLETTERS)



WELL, I AIN'T CINDERELLA, BUT WHO IS?  
CALL ME WHAT YOU WANT IF THE SHOE FITS

A portrait of Ashley McBryde, a woman with long, dark, curly hair, wearing a black floral-patterned top. She has visible tattoos on her arms and is sitting on a pinkish-red couch. The background is softly lit with warm, bokeh lights.

  
ASHLEY McBRYDE  
ONE NIGHT STANDARDS

THE NEW SINGLE

---

FROM YOUR CMA NEW ARTIST OF THE YEAR NOMINEE

---

AVAILABLE NOW | IMPACTING 9/23 |  

# billboard Country Airplay

AIRPLAY  
MONITORED BY  
nielsen  
MUSIC

| THIS WEEK | LAST WEEK | WKS ON CHART | TITLE Imprint/Label  | Artist   | AUDIENCE (IN MILLIONS) |        | PLAYS     |       |      |
|-----------|-----------|--------------|--|--|------------------------|--------|-----------|-------|------|
|           |           |              |  |  | THIS WEEK              | +/-    | THIS WEEK | +/-   | RANK |
| 1         | 2         | 24           | KNOCKIN' BOOTS Capitol Nashville                               | ★ ★ No. 1 (1 week) ★ ★ Luke Bryan  | 39.849                 | +2.724 | 8067      | 749   | 1    |
| 2         | 1         | 44           | THE ONES THAT DIDN'T MAKE IT BACK HOME Valory                  | Justin Moore   | 37.276                 | -3.257 | 7612      | -480  | 2    |
| 3         | 4         | 28           | LIVING Capitol Nashville                                       | Dierks Bentley   | 33.451                 | +3.129 | 6793      | 561   | 3    |
| 4         | 3         | 18           | BEER NEVER BROKE MY HEART River House/Columbia Nashville       | Luke Combs   | 31.880                 | -4.774 | 6094      | -1024 | 4    |
| 5         | 7         | 42           | I DON'T KNOW ABOUT YOU Big Loud                                | Chris Lane   | 29.006                 | +2.452 | 5864      | 425   | 5    |
| 6         | 8         | 20           | SOUTHBOUND Capitol Nashville                                   | Carrie Underwood   | 25.565                 | -0.106 | 5440      | 138   | 6    |
| 7         | 9         | 41           | LOVE YOU TOO LATE Warner Music Nashville/WMN                   | Cole Swindell  | 22.938                 | +0.342 | 5092      | 228   | 8    |
| 8         | 10        | 47           | BUY MY OWN DRINKS Wheelhouse                                   | Runaway June   | 22.353                 | +0.909 | 5216      | 363   | 7    |
| 9         | 11        | 28           | GOOD VIBES Warner Music Nashville/WAR                          | Chris Janson   | 22.022                 | +1.657 | 4588      | 288   | 10   |
| 10        | 12        | 39           | WHAT HAPPENS IN A SMALL TOWN Valory                            | Brantley Gilbert + Lindsay Ell   | 21.867                 | +1.668 | 4796      | 453   | 9    |
| 11        | 13        | 33           | PRAYED FOR YOU Wide Open/RECORDS/Good Company/Arista Nashville | Matt Stell   | 21.617                 | +1.744 | 4540      | 343   | 11   |
| 12        | 14        | 17           | WE WERE Hit Red/Capitol Nashville                              | Keith Urban  | 19.229                 | +0.833 | 4126      | 174   | 12   |
| 13        | 15        | 40           | EVERY LITTLE THING Triple Tigers                               | Russell Dickerson  | 18.624                 | +1.177 | 3968      | 246   | 13   |
| 14        | 16        | 9            | TIP OF MY TONGUE Blue Chair/Warner Music Nashville/WEA         | Kenny Chesney  | 17.019                 | +0.921 | 3624      | 231   | 14   |
| 15        | 17        | 17           | WHAT IF I NEVER GET OVER YOU BMLG                              | Lady Antebellum  | 14.247                 | +1.281 | 3300      | 165   | 15   |
| 16        | 20        | 10           | REMEMBER YOU YOUNG Valory                                      | Thomas Rhett   | 13.537                 | +1.713 | 3215      | 412   | 16   |
| 17        | 18        | 49           | BACK TO LIFE Big Machine                                       | Rascal Flatts  | 13.164                 | +0.146 | 3035      | 19    | 17   |
| 18        | 19        | 8            | IT ALL COMES OUT IN THE WASH Vanner/RCA Nashville              | ★ ★ Airpower ★ ★ Miranda Lambert   | 12.764                 | +0.386 | 3012      | 215   | 18   |
| 19        | 21        | 12           | DIVE BAR Pearl   | Garth Brooks & Blake Shelton   | 11.547                 | -0.235 | 2842      | 39    | 20   |
| 20        | 22        | 32           | THOUGHT ABOUT YOU McGraw/Columbia Nashville                    | Tim McGraw   | 10.787                 | +0.640 | 2885      | 70    | 19   |
| 21        | 23        | 13           | ONE MAN BAND RCA Nashville                                     | Old Dominion   | 10.067                 | +1.707 | 2393      | 220   | 21   |
| 22        | NEW       |              | HOMECOMING QUEEN? Black River                                  | ★ ★ Hot Shot Debut / Breaker / Most Increased Audience / Most Added ★ ★ Kelsea Ballerini | 9.545                  | +9.545 | 1433      | 1433  | 30   |
| 23        | 24        | 15           | HEARTACHE MEDICATION Capitol Nashville                         | Jon Pardi  | 7.458                  | +0.561 | 2023      | 261   | 25   |
| 24        | 26        | 24           | RIDIN' ROADS Broken Bow  | Dustin Lynch   | 7.191                  | +0.687 | 1895      | 148   | 26   |
| 25        | 28        | 33           | MAKE ME WANT TO Stoney Creek                                   | Jimmie Allen   | 6.964                  | +0.856 | 2061      | 114   | 24   |
| 26        | 25        | 22           | MR. LONELY Big Machine   | Midland  | 6.894                  | +0.379 | 2106      | 66    | 23   |
| 27        | 29        | 4            | HELL RIGHT Warner Music Nashville/WMN                          | Blake Shelton Featuring Trace Adkins   | 6.569                  | +0.531 | 1606      | 235   | 28   |
| 28        | 27        | 30           | REDNECKER Tree VibeZ/Big Loud                                  | HARDY  | 6.177                  | +0.024 | 2185      | 103   | 22   |
| 29        | 36        | 11           | MORE HEARTS THAN MINE Atlantic/Warner Music Nashville/WEA      | Ingrid Andress   | 5.671                  | +1.847 | 1355      | 429   | 32   |
| 30        | 30        | 28           | SOMEONE I USED TO KNOW ZB Collective/BMG/Wheelhouse            | Zac Brown Band   | 5.530                  | +0.554 | 1526      | 19    | 29   |

## BILLBOARD COUNTRY AIRPLAY PANEL – 148 STATIONS

|                         |      |                     |      |                      |      |                       |      |
|-------------------------|------|---------------------|------|----------------------|------|-----------------------|------|
| Akron, OH               | WQMX | Des Moines, Iowa    | KHKI | Madison, Wis.        | WWQM | Reno, Nevada          | KBUL |
| Albany, N.Y.            | WGNB | Detroit             | WDRO |                      | WMAD | KOLC                  |      |
| Albuquerque, N.M.       | KBOI |                     | WYCD | McAllen, Texas       | KTEX | Richmond, Va.         | WKHK |
| Allentown, Pa.          | KRST | El Paso, Texas      | KHEY | Memphis              | WGKX | Riverside, Calif.     | KFRG |
| Atlanta                 | WCTO | Ft. Myers, Fla.     | WCKT |                      | WLFP | Roanoke, Va.          | WSLC |
|                         | WKHX |                     | WWGR | Miami                | WKIS | Rochester, N.Y.       | WBEE |
| Augusta, Ga.            | WUBL | Ft. Wayne, Ind.     | WQHK | Milwaukee, WI.       | WMIL | Sacramento, Calif.    | KNCI |
| Austin, Texas           | WXOX | Fresno, Calif.      | KSKS |                      |      |                       |      |
| Bakersfield, Calif.     | KASE | Gainesville, Fla.   | WOGK | Minneapolis          | KEEY | St. Louis             | KSD  |
| Baltimore               | KUZZ | Grand Rapids, Mich. | WBCT |                      | KMNB |                       | WIL  |
| Baton Rouge, La.        | WPOC | Greensboro, N.C.    | WTOR | Mobile, Ala.         | WKSJ | Salt Lake City        | KSOP |
| Birmingham, Ala.        | WYNK | Greenville, S.C.    | WSSL | Monmouth/Ocean, N.J. | WKMK | San Antonio, Texas    | KUBL |
|                         | WDXB | Harrisburg, Pa.     | WRBT | Monterey, Calif.     | KTOM |                       | KAJA |
|                         | WZZK | Hartford, Conn.     | WVYZ | Nashville            | WKDF |                       | KCYA |
| Boise, Idaho            | KAWO | Houston             | KLT  |                      | WSIX | San Diego             | KSON |
|                         | KIZN |                     | KKBO | Nassau, N.Y.         | WRNS | San Jose, Calif.      | KPTY |
| Boston                  | BWVL | Huntsville, Ala.    | WDRM | New Bern, N.C.       | WRNS | Sarasota, Fla.        | WCTO |
|                         | WKLB | Indianapolis        | WFMS | New Orleans          | WNOE | Seattle               | KKWF |
| Buffalo, N.Y.           | WYRK |                     | WLHK | New York             | WNSH |                       | KNUC |
| Charleston, S.C.        | WEZL | Jacksonville, Fla.  | WGNE | Norfolk, Va.         | WGH  | Spokane, Wash.        | KXLY |
|                         | WCKN |                     | WQIK |                      | WUSH | Springfield, Mass.    | WRNX |
| Charlotte, N.C.         | WKKT | Johnson City, Tenn. | WXBO | Oklahoma City, Okla. | KJKE | Stockton, Calif.      | KATM |
|                         | WSOC | Kansas City         | KBE  |                      | KST  | Syracuse, N.Y.        | WBFS |
| Chattanooga, Tenn.      | WUSY |                     | WDFW | Omaha, Neb.          | KXKT | Tampa, Fla.           | WFUS |
| Chicago                 | WBEQ |                     | KFKF | Orlando, Fla.        | WWKA |                       | WOYK |
|                         | WUSN | Knoxville, Tenn.    | WVVK | Oxnard-Ventura, CA   | KHAY | Tucson, Ariz.         | KLIM |
| Cincinnati              | WUBE |                     |      | Philadelphia         | WXTU | Tulsa, Okla.          | KTGX |
| Cleveland               | WGAR | Lafayette, La.      | KMDL | Phoenix              | KMLE |                       | KVOO |
| Colorado Springs, Colo. | KATC | Lakeland, Fla.      | WPCV |                      | KNIX |                       | KWEN |
|                         | KCOY | Lancaster, Pa.      | WVOY | Pittsburgh           | WDSY | Visalia, Calif.       | KJUG |
| Columbia, S.C.          | WCOS | Las Vegas           | KCOE |                      | WOGI | Washington, D.C.      | WMO  |
| Columbus, Ohio          | WCOL |                     | KWNR |                      | WPGB | West Palm Beach, Fla. | WIRK |
| Corpus Christi, Texas   | KRYS | Lexington, Ky.      | WBUL | Portland, Maine      | WPOR | Wichita, Kan.         | KFDI |
| Dallas                  | KPLX | Little Rock, Ark.   | KSSN |                      | WTHT |                       | KZSN |
| Dayton, Ohio            | KSCS | Los Angeles         | KKGO | Portland, Ore.       | KUPL | Wilkes Barre, Pa.     | WGGY |
| Denver, Colo.           | WHKO | Louisville, Ky.     | WAMZ | Providence, R.I.     | KWJJ | Wilmington, Del.      | WXCY |
|                         | KYGO |                     | WQNU | Raleigh, NC          | WCTK | York, Pa.             | WGTY |
|                         | KWBL |                     |      |                      | WQDR |                       |      |

# billboard Country Airplay

AIRPLAY  
MONITORED BY  
nielsen  
MUSIC

| THIS WEEK | LAST WEEK | WKS ON CHART | TITLE Imprint/Label   | Artist           | AUDIENCE (IN MILLIONS) |        | PLAYS     |     |      |
|-----------|-----------|--------------|---|------------------|------------------------|--------|-----------|-----|------|
|           |           |              |   |                  | THIS WEEK              | +/-    | THIS WEEK | +/- | RANK |
| 31        | 45        | 5            | EVENTHOUGH I'M LEAVING River House/Columbia Nashville                   | Luke Combs       | 5.391                  | +3.412 | 1021      | 664 | 39   |
| 32        | 33        | 5            | HOMESICK Zone 4/RCA Nashville   | Kane Brown       | 5.159                  | +0.479 | 1030      | 71  | 38   |
| 33        | 31        | 20           | SLOW DANCE IN A PARKING LOT MCA Nashville                               | Jordan Davis     | 5.124                  | +0.173 | 1620      | 30  | 27   |
| 34        | 32        | 14           | EVERY GIRL IN THIS TOWN Gwendolyn/Pearl                                 | Trisha Yearwood  | 4.988                  | +0.292 | 1304      | 33  | 33   |
| 35        | 34        | 29           | TO AT RCA Nashville   | Ryan Hurd        | 4.626                  | +0.421 | 1250      | 64  | 34   |
| 36        | 35        | 15           | CATCH BMLG  | Brett Young      | 4.509                  | +0.424 | 1012      | 80  | 40   |
| 37        | 38        | 5            | I WISH GRANDPAS NEVER DIED BMLG <b>★★ Breaker ★★</b>                    | Riley Green      | 4.134                  | +0.852 | 1083      | 200 | 36   |
| 38        | 37        | 34           | NOTHING TO DO TOWN Curb   | Dylan Scott      | 3.737                  | -0.047 | 1408      | 12  | 31   |
| 39        | 39        | 26           | AFTER A FEW Mercury   | Travis Denning   | 3.643                  | +0.380 | 1176      | 116 | 35   |
| 40        | 41        | 16           | FAMILY TREE Capitol Nashville   | Caylee Hammack   | 3.020                  | +0.307 | 1008      | 96  | 41   |
| 41        | 40        | 21           | ONE BIG COUNTRY SONG Wheelhouse   | LOCASH           | 2.960                  | +0.107 | 841       | 67  | 42   |
| 42        | 43        | 22           | IN BETWEEN Triple Tigers  | Scotty McCreery  | 2.906                  | +0.500 | 1064      | 92  | 37   |
| 43        | 42        | 14           | HOMEMADE Big Loud   | Jake Owen        | 2.784                  | +0.170 | 797       | 63  | 43   |
| 44        | 44        | 8            | WHAT COULD'VE BEEN Triple Tigers  | Gone West        | 2.414                  | +0.052 | 698       | 34  | 45   |
| 45        | 47        | 3            | THE BONES Columbia Nashville  | Maren Morris     | 2.280                  | +0.488 | 516       | 125 | 50   |
| 46        | 48        | 10           | LONELY IF YOU ARE Dack Janiels/Broken Bow                               | Chase Rice       | 1.736                  | +0.135 | 578       | 32  | 48   |
| 47        | 51        | 12           | HER WORLD OR MINE Warner Music Nashville/WEA <b>★★ Breaker ★★</b>       | Michael Ray      | 1.731                  | +0.230 | 670       | 54  | 46   |
| 48        | 46        | 9            | THE GIT UP TrailerTrapMusic/BBMG/BMG/Wheelhouse/Stoney Creek/Broken Bow | Blanco Brown     | 1.683                  | -0.097 | 578       | 15  | 49   |
| 49        | 53        | 6            | CHASIN' YOU Big Loud  | Morgan Wallen    | 1.604                  | +0.231 | 439       | 28  | 52   |
| 50        | 49        | 5            | DETAILS Mercury   | Billy Currington | 1.552                  | -0.037 | 423       | -4  | 53   |
| 51        | 50        | 20           | SLOWER Curb   | Filmore          | 1.533                  | +0.006 | 585       | 36  | 47   |
| 52        | 52        | 21           | WORLD FOR TWO 24 Entertainment/Stoney Creek                             | King Calaway     | 1.333                  | -0.049 | 701       | -38 | 44   |
| 53        | NEW       |              | MONSTERS EMI Nashville  | Eric Church      | 0.996                  | +0.627 | 320       | 222 | 60   |
| 54        | 56        | 6            | DIE FROM A BROKEN HEART Mercury   | Maddie & Tae     | 0.869                  | -0.040 | 418       | 25  | 54   |
| 55        | 59        | 2            | I HOPE Warner Music Nashville/WAR                                       | Gabby Barrett    | 0.803                  | +0.123 | 366       | 39  | 57   |
| 56        | 55        | 8            | CHASIN' ME True To The Song/Mailboat/New Revolution                     | Caroline Jones   | 0.756                  | -0.168 | 506       | 25  | 51   |
| 57        | 57        | 2            | DON'T LET HER Monument/Arista Nashville                                 | Walker Hayes     | 0.746                  | -0.154 | 316       | 16  | -    |
| 58        | 58        | 3            | FRONT SEAT Studio2bee/Legend Entertainment                              | Rayne Johnson    | 0.742                  | -0.014 | 98        | 10  | -    |
| 59        | 60        | 2            | NOTHIN' ON YOU CoJo/Warner Music Nashville/WMN                          | Cody Johnson     | 0.721                  | +0.049 | 275       | 26  | -    |
| 60        | NEW       |              | NO STONE UNTURNED Stoney Creek  | Randy Houser     | 0.685                  | +0.045 | 293       | -8  | -    |



22

**KELSEA BALLERINI**  
Homecoming Queen?

Co-written by **Ballerini**, "Queen" is the first single from her upcoming third LP. Released Sept. 6 and aided by hourly plays on participating iHeartMedia stations that day, it enters Country Airplay (9.5 million impressions) at No. 22, marking her highest debut to date.

## GOING FOR ADDS

9/16

**AARON WATSON**  
Country Radio  
BIG Label

**JASON ALDEAN**  
We Back  
Macon/Broken Bow

**LITTLE BIG TOWN**  
Over Drinking  
Capitol Nashville

**NOAH SCHNACKY**  
I'll Be The One  
Big Machine

9/23

**ASHLEY MCBRYDE**  
One Night Standards  
Warner Music Nashville/WAR

**BILLY RAY CYRUS & JOHNNY MCGUIRE**  
Chevys And Fords  
Wheelhouse

**CHRIS YOUNG**  
Drowning  
RCA Nashville

**FLORIDA GEORGIA LINE**  
Blessings  
BMLG

**JOHN WAYNE SCHULZ**  
Hard To Keep A Good Man Down  
Jerry Duncan

9/30

**CJ SOLAR**  
Coming My Way  
Sea Gyle

# billboard Country Airplay

AIRPLAY  
MONITORED BY  
nielsen  
MUSIC

| MOST ADDED®  |                                  |      |
|--|----------------------------------|------|
| TITLE Imprint/Label                                    | Artist                           | ADDS |
| HOMECOMING QUEEN? Black River                          | Kelsea Ballerini                 | 81   |
| EVEN THOUGH I'M LEAVING River House/Columbia Nashville | Luke Combs                       | 35   |
| ONE BIG COUNTRY SONG Wheelhouse                        | LOCASH                           | 16   |
| THANK GOD FOR YOU Curb                                 | Rodney Atkins                    | 16   |
| MONSTERS EMI Nashville                                 | Eric Church                      | 11   |
| THE BONES Columbia Nashville                           | Maren Morris                     | 10   |
| I WISH GRANDPAS NEVER DIED BMLG                        | Riley Green                      | 9    |
| HEARTACHE MEDICATION Capitol Nashville                 | Jon Pardi                        | 8    |
| HELL RIGHT Warner Music Nashville/WMN                  | Blake Shelton Feat. Trace Adkins | 7    |
| SHE'S MINE MCA Nashville                               | Kip Moore                        | 7    |

| MOST INCREASED AUDIENCE  |                                |                    |
|--|--------------------------------|--------------------|
| TITLE Imprint/Label  | Artist                         | GAIN (IN MILLIONS) |
| HOMECOMING QUEEN? Black River                                  | Kelsea Ballerini               | +9.545             |
| EVEN THOUGH I'M LEAVING River House/Columbia Nashville         | Luke Combs                     | +3.413             |
| LIVING Capitol Nashville                                       | Dierks Bentley                 | +3.129             |
| KNOCKIN' BOOTS Capitol Nashville                               | Luke Bryan                     | +2.724             |
| I DON'T KNOW ABOUT YOU Big Loud                                | Chris Lane                     | +2.452             |
| MORE HEARTS THAN MINE Atlantic/Warner Music Nashville/WEA      | Ingrid Andress                 | +1.847             |
| PRAYED FOR YOU Wide Open/RECORDS/Good Company/Arista Nashville | Matt Stell                     | +1.744             |
| REMEMBER YOU YOUNG Valory                                      | Thomas Rhett                   | +1.713             |
| ONE MAN BAND RCA Nashville                                     | Old Dominion                   | +1.706             |
| WHAT HAPPENS IN A SMALL TOWN Valory                            | Brantley Gilbert + Lindsay Ell | +1.668             |

| MOST INCREASED PLAYS   |                                |       |
|--|--------------------------------|-------|
| TITLE Imprint/Label  | Artist                         | GAIN  |
| HOMECOMING QUEEN? Black River                                  | Kelsea Ballerini               | +1433 |
| KNOCKIN' BOOTS Capitol Nashville                               | Luke Bryan                     | +749  |
| EVEN THOUGH I'M LEAVING River House/Columbia Nashville         | Luke Combs                     | +664  |
| LIVING Capitol Nashville                                       | Dierks Bentley                 | +561  |
| WHAT HAPPENS IN A SMALL TOWN Valory                            | Brantley Gilbert + Lindsay Ell | +453  |
| MORE HEARTS THAN MINE Atlantic/Warner Music Nashville/WEA      | Ingrid Andress                 | +429  |
| I DON'T KNOW ABOUT YOU Big Loud                                | Chris Lane                     | +425  |
| REMEMBER YOU YOUNG Valory                                      | Thomas Rhett                   | +412  |
| BUY MY OWN DRINKS Wheelhouse                                   | Runaway June                   | +363  |
| PRAYED FOR YOU Wide Open/RECORDS/Good Company/Arista Nashville | Matt Stell                     | +343  |

| NEW AND ACTIVE  |                |                |                |      |
|---|----------------|----------------|----------------|------|
| TITLE Imprint/Label   | Artist         | TOTAL AUDIENCE | TOTAL STATIONS | ADDS |
| BREAK IT IN Valory  | Eli Young Band | 0.681          | 21             | 3    |
| SHE'S MINE MCA Nashville                                    | Kip Moore      | 0.663          | 24             | 7    |
| GOOD LORD Black River                                       | Abby Anderson  | 0.649          | 40             | 1    |
| REALLY SHOULDN'T DRINK AROUND YOU Monument/Arista Nashville | Teddy Robb     | 0.633          | 23             | 0    |
| LOVE THAT RCA Nashville                                     | Seaforth       | 0.632          | 24             | 0    |
| THANK GOD FOR YOU Curb                                      | Rodney Atkins  | 0.609          | 37             | 16   |

| RECURRENTS |  |                |                          |
|------------|--|----------------|--------------------------|
| THIS WEEK  | TITLE Imprint/Label                            | Artist         | TOTAL AUD. (IN MILLIONS) |
| 1          | WHISKEY GLASSES Big Loud                       | Morgan Wallen  | 26.128                   |
| 2          | REARVIEW TOWN Macon/Broken Bow                 | Jason Aldean   | 24.814                   |
| 3          | ALL TO MYSELF Warner Music Nashville/WAR       | Dan + Shay     | 22.828                   |
| 4          | GOD'S COUNTRY Warner Music Nashville/WMN       | Blake Shelton  | 18.598                   |
| 5          | RUMOR Curb                                     | Lee Brice      | 16.920                   |
| 6          | BEAUTIFUL CRAZY River House/Columbia Nashville | Luke Combs     | 16.337                   |
| 7          | LOVE AIN'T Valory                              | Eli Young Band | 15.716                   |
| 8          | EYES ON YOU Dack Janiels/Broken Bow            | Chase Rice     | 15.548                   |
| 9          | SOME OF IT EMI Nashville                       | Eric Church    | 15.533                   |
| 10         | GOOD AS YOU Zone 4/RCA Nashville               | Kane Brown     | 14.440                   |

| BILLBOARD COUNTRY BOXSCORE                               |   |                     |                             |
|--|---|---------------------|-----------------------------|
| Gross Ticket Price(s)                                    | Artist Venue/Date(s)  | Attendance Capacity | Promoter(s)                 |
| \$3,874,149<br>\$126, \$90, \$66, \$40                   | LUKE BRYAN<br>Gillette Stadium, Foxborough, Mass./June 21                       | 52,139<br>52,139    | KRAFT SPORT & ENTERTAINMENT |
| \$1,776,313<br>\$135.25, \$100, \$40.25                  | LUKE BRYAN<br>Northwell Health at Jones Beach Theater, Wantagh, N.Y./July 13-14 | 26,025<br>27,370    | LIVE NATION                 |
| \$1,091,161<br>\$100.75, \$80.75, \$60.75, \$31          | LUKE BRYAN<br>Amphitheater at the Wharf, Orange Beach, Ala./July 19-20          | 17,474<br>19,268    | LIVE NATION                 |
| \$1,079,170<br>\$104.75, \$88.75, \$74.75, \$44.85, \$35 | LUKE BRYAN<br>Hersheypark Stadium, Hershey, Pa./June 6                          | 21,186<br>27,745    | LIVE NATION                 |
| \$1,031,284<br>\$123.50, \$89, \$64.25, \$40.50, \$34.50 | LUKE BRYAN<br>Riverbend Music Center, Cincinnati, Ohio/June 8                   | 20,819<br>20,819    | LIVE NATION                 |

Reported worldwide boxscore figures for Country artists. Boxscore figures should be submitted to Bob Allen by phone (615-891-1976), fax (615-891-2054) or email (bob.allen@billboard.com).



## TEXAS REGIONAL RADIO REPORT

WEEK ENDING SEPTEMBER 8, 2019

| THIS WEEK | LAST WEEK | WKS ON CHART | TITLE (Label)                                      | ARTIST               | TW SPINS | SPINS +/- | THIS WEEK | LAST WEEK | WKS ON CHART | TITLE (Label)                              | ARTIST         | TW SPINS | SPINS +/- |
|-----------|-----------|--------------|--|----------------------|----------|-----------|-----------|-----------|--------------|--|----------------|----------|-----------|
| 1         | 4         | 14           | STILL (Independent) ★★ 1 Week at 1 ★★              | Curtis Grimes        | 1804     | 145       | 11        | 11        | 8            | BETTER WITH BEER (Independent)             | Kevin Fowler   | 1272     | 147       |
| 2         | 2         | 17           | LET'S MAKE A LOVE SONG (Almost Country)            | Casey Donahew        | 1764     | 16        | 12        | 12        | 17           | YEAH BUDDY (Dubya)                         | Wynn Williams  | 1211     | 90        |
| 3         | 3         | 17           | GOOD COUNTRY SONG (Independent)                    | Robert Ray           | 1749     | 50        | 13        | 16        | 11           | THIS BAR NEEDS A TOWN (Independent)        | Mark Powell    | 1200     | 162       |
| 4         | 7         | 16           | SOME OL' BAR IN THE 90'S (Independent)             | Jon Wolfe            | 1659     | 193       | 14        | 14        | 17           | CINNAMON SHORE (Independent)               | Mark McKinney  | 1114     | 47        |
| 5         | 5         | 17           | THE WINDING STAIR MOUNTAIN BLUES (Independent)     | Turnpike Troubadours | 1600     | 21        | 15        | 13        | 21           | WHERE THERE'S A WILLIE (Independent)       | Jack Ingram    | 1077     | -19       |
| 6         | 1         | 18           | STAY (Independent)                                 | William Clark Green  | 1535     | -285      | 16        | 21        | 9            | ROLLING STONE (Independent)                | Whiskey Myers  | 1076     | 147       |
| 7         | 9         | 21           | CLOSE ENOUGH TO WALK (Dean Dillon's Wildcatter)    | Sundance Head        | 1521     | 83        | 17        | 20        | 15           | BETWEEN THE STONES AND JONES (Independent) | Dustin Sonnier | 1017     | 68        |
| 8         | 8         | 25           | JUST FOR A MINUTE (Independent)                    | Frank Ray            | 1481     | 17        | 18        | 15        | 22           | CRAZY (Independent)                        | Abe Mac Band   | 1016     | -29       |
| 9         | 10        | 9            | I'LL NEVER GET OVER YOU (Independent)              | Randy Rogers Band    | 1449     | 192       | 19        | 19        | 16           | DEVIL YOU KNOW (Independent)               | Drew Fish Band | 1014     | 54        |
| 10        | 6         | 14           | HILL COUNTRY BOOGALOO (One Chord Song/Smith Music) | Stoney LaRue         | 1360     | -218      | 20        | 26        | 15           | LIFE OF MY LOVE (S.O.T.)                   | Jody Booth     | 944      | 150       |

Texas Regional Radio Report Top 100 is compiled from weekly online playlist reports from 86 radio stations located in Texas and surrounding states, including reports from specialty shows, internet and satellite radio outlets. Songs are ranked by total plays. For tracking, complete chart methodology and more information, visit [www.texasregionalradio.com](http://www.texasregionalradio.com), or contact Dave Smith at 817-283-7984. Copyright 2019, Texas Regional Radio Report



FROM THE CRITICALLY ACCLAIMED ALBUM:  
CAN'T SAY I AIN'T COUNTRY  
AVAILABLE NOW!



FLORIDA GEORGIA LINE  
BLESSINGS



IMPACTING 9/23

2019 CMA NOMINEE FOR VOCAL DUO OF THE YEAR

THANK YOU TO ALL THE BELIEVERS!



# Lady Antebellum

What If I Never  
Get Over You



**TOP 15 AND CLIMBING!**

**2019 CMA NOMINEE FOR VOCAL GROUP OF THE YEAR**

**#1 RESEARCH! #1 FEMALES 25-54, #1 FEMALES 45-54**

**\*RATE THE MUSIC CALLOUTS**



## NASHVILLE &amp; NATIONAL TOM ROLAND



Toby Keith hosted WGKX Memphis staff when he performed in the city in August. From left: Show Dog Nashville director of Southwest/Midwest promotion Greg Sax, WGKX promotions director Randy Mayer, Keith and WGKX assistant PD/music director Kay Manley.

## COUNTRY TO THE RESCUE

Hurricane Dorian has moved on, but it left enormous damage in its wake, and songwriter **Patrick Davis** ("Where I'm From") has already booked a Ryman Auditorium benefit for Sept. 16, one of several fresh fundraising efforts in the country music community.

Here's a list of new charity activities in the works:

- Davis' Hope 4 Hope Town concert at the Ryman includes **Darius Rucker**, **Kristian Bush**, **Randy Houser**, **Devin Dawson**, **James Otto** and **Hootie & The Blowfish** guitarist **Mark Bryan**, with more to be announced. Davis has raised over \$375,000 for the Bahamas through a [GoFundMe](#) page.
- **Little Big Town** will perform Sept. 12 at the Changing the World for Children gala in New York as Save the Children celebrates its centennial.
- **Kimberly Williams-Paisley's** '80s Dance Party to End Alz named **Brad Paisley**, **Shenandoah**, **Hunter Hayes**, **REO Speedwagon's Kevin Cronin** and others for a Sept. 29 show at Nashville's Wildhorse Saloon.
- **Jeannie Seely** hosts a **Dottie West** birthday bash at Nashville's 3rd & Lindsley on Oct. 9 with proceeds going to the Musicians Emergency Relief Fund. Among the talent are **Jamey Johnson**, **John Schneider** and **John Berry**.
- **Tracy Lawrence** set Nov. 19 for the 14th annual Mission: Possible turkey fry for the Nashville Rescue Mission. The event has raised over \$500,000 since its inception. This year's concert features **Justin Moore**, **Rhett Akins**, **Clay Walker** and **Halfway to Hazard**.

## RADIO &amp; RECORDS

BMLG Records promoted **Michelle Kammerer** to senior national director of promotion and marketing from national director. Reach her [here](#)... Warner Music Nashville announced the signing of singer-songwriter **Randall King** to a recording deal. He is published by BMG Music and managed by Durango Artist Management... Entercom/Kansas City lured **Mike Kennedy** out of retirement to serve as operations manager/PD for two stations, including country **WDAF**. Kennedy previously was PD at **KBEQ** Kansas City before stepping away from day-to-day duties at the end of 2016... **Jonathan Wier** joined **Ayla Brown** in morning drive at **WKLB** Boston, with **Jackson Blue** moving to afternoon drive. Wier spent the past four years doing evenings at news/talk **KMBZ-FM** Kansas City... **WXTU** Philadelphia shifted weekend personality **Charlie Maxx** into the evening daypart... **Troy Clingerman** joined Cumulus/Wichita Falls, Texas, as market president/chief revenue officer, overseeing a four-station cluster that includes country **KWFS**. Clingerman most recently was local sales manager at **KYTX-TV** Tyler, Texas... Connoisseur Media promoted **Keith Dakin** to vp programming from Connecticut regional operations manager. The chain's holdings include the recently acquired country signal **WFRE** Frederick, Md.... Cox Media Group promoted **Zac Morgan** to digital audience development manager from Cox/Atlanta digital content manager, InsideRadio.com reported... iHeartMedia/Raleigh-Greensboro, N.C., parted ways with area senior vp programming **Chris Edge**, according to InsideRadio.com. Raleigh properties include country **WNCB**... Cumulus/Charleston, S.C., welcomed vp/market manager **Eric Mastel**, who transferred from a similar role at Cumulus/Savannah, Ga., Talkers.com reported. The Charleston group includes country **WJFL**. His former Savannah role, which includes oversight of country **WJCL**, was

taken by **Gigi South**, who previously was GM at Mississippi Broadcasters/Meridian, Miss.... **Joey Brooks** joined iHeartMedia/Connecticut, according to Talkers.com, with country **WWYZ** Hartford in his jurisdiction. He arrives from iHeartMedia/Miami, where he held programming roles at two noncountry stations.

## 'ROUND THE ROW

CMT hired **Shanna Strassberg** as vp music and talent, compelling her to exit her role as a freelance talent executive. Concurrently, the network promoted **Donna Duncan** to director of music strategy from senior manager and promoted **Stacey Cato** to senior manager from manager. Reach Strassberg [here](#)... BMI Nashville vp creative **Jody Williams** announced plans to leave the organization at the end of 2019 to form a new publishing company. He will remain a BMI consultant during 2020, easing out of a post he first assumed in 2006... Country Music Association senior director of awards and industry relations **Brandi Simms** has left after 17 years to pursue other endeavors. Reach her [here](#). CMA is leaving the position unfilled for now... **John Paul White**, formerly of **The Civil Wars**, signed a publishing deal with Warner Chappell Nashville... Bluegrass act **Sideline** tapped So Much Moore Media for tour press... **Eric Paslay** joined the board of directors at JDRF (formerly the Juvenile Diabetes Research Foundation) Middle Tennessee... The Academy of Country Music recognized "The House That Built Me" as the song of the decade, presenting awards to **Miranda Lambert** and writers **Tom Douglas** and **Allen Shamblin**. Similar decade honors will also be handed out in six other categories... **Randy Travis** will receive the ASCAP Founders Award during the ASCAP Country Music Awards on Nov. 11... The Unsigned Only music competition recognized country winner **Tyler Dial** for "Damn, Denver" and runner-up **Kaylee Bell** for "Keith." Americana honors went to winner **Kenny Foster** for "Wood & Steel" and runner-up **Roger Street** for "Everyday"... The International Songwriting Competition is accepting entries through Sept. 18 [here](#). The contest features 85 judges, including **Cam**, **Tanya Tucker** and **Walker Hayes**... The Bertelsmann Content Alliance has joined with the Country Music Association to telecast this year's CMA Awards in Germany. As a result, **CMA Fest** and **CMA Country Christmas** will also be presented in the territory. Additionally, Mediengruppe RTL will launch a country-formatted digital station through RTL Radio... Texas singer-songwriter **Kylie Rae Harris** died Sept. 4 in a three-car accident in New Mexico. A GoFundMe page has been established [here](#) to assist with funeral costs and a college fund for her 6-year-old daughter, **Corbie**... Bluegrass/roots music executive **Keith Case** died Sept. 3. He was a manager and talent agent for three decades, working with acts such as **Alison Krauss + Union Station**, **The SteelDrivers** and **The Del McCoury Band** prior to retiring in 2011... Veteran executive **Al Embry** died Sept. 9 at his home in Old Hickory, Tenn. Employed early in his career by Country Music Hall of Fame member **Hubert Long**, Embry formed his own agency in 1975 and worked with acts like **Alabama**, **Mickey Gilley** and **Jerry Lee Lewis**. Visitation will be held from 2 p.m. to 8 p.m. on Sept. 11 and from 10 a.m. to 11 a.m. on Sept. 12 at the Hermitage Funeral Home in Nashville. A celebration of his life is set for 11 a.m. on Sept. 12.



**C.J. Solar** (right) visited with **WSM-AM Nashville** personality **Bill Cody** on Sept. 5 to discuss his **Grand Ole Opry** debut on Sept. 7.

AMANDA CANNON



**Miranda Lambert** hung with staff from **WCTO Allentown, Pa.**, when she played the Allentown Fair. From left: **WCTO** personality **Kristy O'Brian**, PD **Jerry Padden**, **Lambert** and personalities **Becca Lynn** and **Sam Malone**.

NASHVILLE & NATIONAL TOM ROLAND

MUSIC NOTES

Carrie Underwood's *Sunday Night Football* theme with Joan Jett debuted Sept. 8, but it was just part of a wave of country and sports links in the last week. Home Free sang the national anthem before the Minnesota Vikings' NFL home opener on Sept. 8. Eric Church attended as his song "Carolina" was used for in-game entertainment Sept. 7 at the North Carolina Tar Heels' NCAA football game against Miami. Pat Green performed "Wave On Wave" with the University of Iowa marching band during halftime Sept. 7. Florida Georgia Line, Danielle Bradbery and Big Machine president/CEO Scott Borchetta had pre-race duties at the Big Machine Vodka 400 at the Brickyard Sept. 8. And, in the most unusual sports moment, owners of a minor-league baseball franchise moving from New Orleans to Kansas are letting the public vote on the new team name. One option has Glen Campbell overtones: the Wichita Linemen.



CAMERON POWELL

Jason Aldean unveiled four new tracks on Sept. 9 as he announced the title and release date for his next album, 9, due Nov. 22. A ream of other projects were also just revealed: HARDY's *Hixtape Vol. 1* (due Sept. 13); T.G. Sheppard's *Midnight in Memphis* (Sept. 20); Colt Ford's *We the People Volume 1* (Sept. 20); King Calaway's *Rivers* (Oct. 4); Ruston Kelly's *Dirt Emo Vol. 1* (Oct. 11); Florida Georgia Line's *The Acoustic Sessions* (Oct. 18); Maddie & Tae's *Everywhere I'm Goin'* (Oct. 18); The Carter Family's *Across Generations*, featuring five generations of the seminal act (Oct. 18); Allison Moorer's *Blood* (Oct. 25); Jon Langston's *Now You Know* (Oct. 25); Micky & The Motorcars' *Long Time Comin'* (Nov. 1); Ned LeDoux's *Next in Line* (Nov. 8); Blackberry Smoke's *Homecoming: Live in Atlanta* (Nov. 15); and Little Big Town's *Nightfall* (Jan. 16).

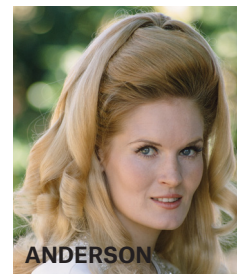
Trisha Yearwood hosts CMA *Country Christmas* as the show tapes at Nashville's Belmont University on Sept. 25. Guests for the 10th annual ABC special include Lady Antebellum, Rascal Flatts, Chris Young, Chris Janson, Brett Young and Runaway June, plus a few noncountry extras.

Four country stars assist as the Hallmark Channel launches its new Christmas movies starting Oct. 25. Kellie Pickler stars in *The Mistletoe Secret* (airing Nov. 10), Chase Bryant joins Priscilla Presley and Adrian Grenier in *Christmas at Graceland: Home for the Holidays* (Nov. 24) and Dolly Parton is, naturally, a part of *Christmas at Dollywood*. Additionally, Blake Shelton is an executive producer for the Dec. 6 movie *Time for You to Come Home for Christmas*.

ON THIS DATE IN COUNTRY MUSIC

Sept. 10

- 2009 — The Country Music Association announces Brad Paisley and Keith Urban's "Start a Band" is a finalist for musical event of the year in the 43rd annual awards. It had been left off the previous day's nominations list by mistake.
- 1970 — Lynn Anderson records "Rose Garden" in the evening hours at the Columbia Recording Studios in Nashville.



COURTESY LISA SUTTON

Sept. 11

- 2001 — A terrorist attack levels both towers at the World Trade Center in New York. Garth Brooks, Billy Gilman, Rosanne Cash and Mary Chapin Carpenter are in Manhattan during the chaos but are unhurt.
- 1989 — Hank Williams Jr.'s "All My Rowdy Friends Are Coming Over Tonight" debuts as "All My Rowdy Friends are Here on Monday Night" to promote ABC-TV's *Monday Night Football*. The New York Giants beat the Washington Redskins, 27-24.

Sept. 12

- 1979 — Johnny Cash is made a deputy sheriff in Davidson County, Tenn.

Sept. 13

- 1969 — Earl Scruggs makes his first appearance on the Grand Ole Opry at Nashville's Ryman Auditorium since splitting with longtime partner Lester Flatt. He plays "Foggy Mountain Breakdown" with his sons, Gary and Randy Scruggs.

Sept. 14

- 2018 — Capitol releases Carrie Underwood's first album for the label, *Cry Pretty*.
- 2004 — With Hurricane Jeanne due to hit the Virgin Islands the following day, Kenny Chesney performs a lengthy acoustic concert for about 100 stranded tourists, riding out 120 mile-per-hour winds.

Sept. 15

- 2014 — EMI releases Eric Church's "Talladega" to radio.

Sept. 16

- 2017 — Old Dominion's *Happy Endings* starts at No. 1 on the *Billboard* Top Country Albums chart.

Source: [RolandNote.com](http://RolandNote.com), the Ultimate Country Music Database

Top Headlines from billboard.com

Click on headlines below for more details

U.S. Recorded-Music Business Grew 18% In First Half Of 2019: RIAA MidYear Report

MGM To Use Vegas Shooting Site As Community Center

FCC Commissioner Asks RIAA To Investigate Payola Allegations

Hootie & The Blowfish Named Billboard Live Music Summit And Awards Honorees

Sony Unveils New \$900 Touchscreen Walkman



Tenille Arts headlined the third night of the recent five-night Taste of Madison event hosted by WWQM Madison, Wis. From left: WWQM assistant PD Super Dave Ogden, personality Steph Peters, Arts, personality Jackson Jones and PD Fletcher Keyes.



**billboard**

# CMA AWARDS NOMINATIONS GUIDE

The CMA Awards are Country Music's Biggest Night, dedicated to celebrating and honoring Country Music's greatest artists and their contributions. In partnership with the Country Music Association, *Billboard's* inaugural CMA Awards Nominations Guide will provide a comprehensive overview of this year's awards.

Coverage will include a Q&A with Sarah Trahern (CEO) and Robert Deaton (Executive Producer), final nominees in key award categories, profiles of the top nominees including their musical contributions and credits, information on the CMA Foundation, and much more.

**Take this opportunity to congratulate the nominees and recognize their accomplishments over the past year.**

## BONUS DISTRIBUTION:

All members of the Country Music Association, City of Hope Gala (LA) 10/10, Making Vinyl Conference 10/14-10/15 (LA), SAG-AFTRA Convention 10/10

**ON SALE:** 9/28

**AD CLOSE** 9/19

**MATERIALS DUE** 9/20

## CONTACT:

**Lee Ann Photoglo**  
615.376.7931  
laphotoglo@gmail.com

**Cynthia Mellow**  
615.352.0265  
cmellow@comcast.net

**Joe Maimone**  
212.493.4427  
joe.maimone@billboard.com

**Debra Fink**  
323.525.2249  
debra.fink@thr.com

CMA AWARDS  
NOVEMBER 13, 2019  
ON ABC

# billboard Hot Country Songs

SALES, AIRPLAY & STREAMING DATA  
COMPILED BY  
**nielsen**  
MUSIC

| THIS WEEK | LAST WEEK | TWO WEEKS AGO | WKS ON CHART | TITLE<br><small>PRODUCER (SONGWRITER)</small>  | Artist<br><small>IMPRINT / PROMOTION LABEL</small>                                  | COUNTRY AIRPLAY RANK | PEAK POSITION |
|-----------|-----------|---------------|--------------|--|---|----------------------|---------------|
| 1         | 1         | 1             | 14           | <b>THE GIT UP</b><br>BLANCO BROWN (B.A.III) <span style="float:right">★★ No. 1 (9 weeks) ★★</span>   | <b>Blanco Brown</b><br>TRAILERTRAPMUSIC/BBMG/BMG/WHEELHOUSE/STONEY CREEK/BROKEN BOW | 48                   | 1             |
| 2         | 3         | 3             | 23           | <b>KNOCKIN' BOOTS</b><br>J.STEVENS,J.STEVENS (H.LINDSEY,G.SAMPSON,J.M.NITE)  | <b>Luke Bryan</b><br>CAPITOL NASHVILLE  | 1                    | 2             |
| 3         | 2         | 2             | 18           | <b>BEER NEVER BROKE MY HEART</b><br>S.MOFFATT (L.COMBS,R.MONTANA,J.SINGLETON)  | <b>Luke Combs</b><br>RIVER HOUSE/COLUMBIA NASHVILLE                                 | 4                    | 2             |
| 4         | 9         | 8             | 9            | <b>ONE THING RIGHT</b><br>MARSHMELLO (MARSHMELLO,K.BROWN,J.FRASURE,M.MCGINN)   | <b>Marshmello &amp; Kane Brown</b><br>JOYTIME COLLECTIVE/RCA NASHVILLE              | -                    | 4             |
| 5         | 5         | 7             | 47           | <b>WHISKEY GLASSES</b><br>J.MOI (B.BURGESS,K.KADISH)   | <b>Morgan Wallen</b><br>BIG LOUD  | RC                   | 1             |
| 6         | 4         | 5             | 24           | <b>GOD'S COUNTRY</b><br>S.HENDRICKS (M.W.HARDY,J.M.SCHMIDT,D.DAWSON)   | <b>Blake Shelton</b><br>WARNER MUSIC NASHVILLE/WMN                                  | RC                   | 1             |
| 7         | 6         | 6             | 35           | <b>ALL TO MYSELF</b><br>D.SMYERS,S.HENDRICKS (D.SMYERS,S.MOONEY,N.GALYON,J.REYNOLDS)   | <b>Dan + Shay</b><br>WARNER MUSIC NASHVILLE/WAR                                     | RC                   | 3             |
| 8         | 7         | 9             | 24           | <b>THE ONES THAT DIDN'T MAKE IT BACK HOME</b><br>J.S.STOVER,S.BORCHETTA (J.MOORE,PDIGIOVANNI,C.MCGILL,J.S.STOVER)                                    | <b>Justin Moore</b><br>VALORY   | 2                    | 7             |
| 9         | 11        | 10            | 48           | <b>I DON'T KNOW ABOUT YOU</b><br>J.MOI (A.GORLEY,M.W.HARDY,H.PHELPS,J.RODGERS)   | <b>Chris Lane</b><br>BIG LOUD   | 5                    | 9             |
| 10        | 8         | 4             | 35           | <b>REARVIEW TOWN</b><br>M.KNOX (N.THRASHER,B.PINSON,K.LOVEFACE)  | <b>Jason Aldean</b><br>MACON/BROKEN BOW   | RC                   | 4             |
| 11        | 12        | 11            | 22           | <b>LIVING</b><br>R.COPPERMAN,J.R.STEWART (R.COPPERMAN,J.M.NITE,A.GORLEY,D.BENTLEY)   | <b>Dierks Bentley</b><br>CAPITOL NASHVILLE  | 3                    | 11            |
| 12        | 13        | 16            | 34           | <b>PRAYED FOR YOU</b><br>A.BOWERS,M.STELL (M.STELL,A.BOWERS,A.CRUZ)  | <b>Matt Stell</b><br>WIDE OPEN/RECORDS/GOOD COMPANY/ARISTA NASHVILLE                | 11                   | 12            |
| 13        | 14        | 12            | 17           | <b>SOUTHBOUND</b><br>D.GARCIA,C.UNDERWOOD (C.UNDERWOOD,D.A.GARCIA,J.MILLER)  | <b>Carrie Underwood</b><br>CAPITOL NASHVILLE  | 6                    | 12            |
| 14        | 15        | 13            | 28           | <b>LOVE YOU TOO LATE</b><br>M.R.CARTER (C.SWINDELL,M.R.CARTER,B.KINNEY)  | <b>Cole Swindell</b><br>WARNER MUSIC NASHVILLE/WMN                                  | 7                    | 13            |
| 15        | 17        | 25            | 23           | <b>ONE MAN BAND</b><br>S.MCANALLY (M.RAMSEY,T.ROSEN,B.TURSI,J.OSBORNE)   | <b>Old Dominion</b><br>RCA NASHVILLE  | 21                   | 15            |
| 16        | 16        | 14            | 9            | <b>TIP OF MY TONGUE</b><br>R.COPPERMAN,K.CHESNEY (K.CHESNEY,R.COPPERMAN,E.C.SHEERAN)   | <b>Kenny Chesney</b><br>BLUE CHAIR/WARNER MUSIC NASHVILLE/WEA                       | 14                   | 14            |
| 17        | 20        | 24            | 19           | <b>GOOD VIBES</b><br>Z.CROWELL,C.JANSON (C.JANSON,Z.CROWELL,A.GORLEY)  | <b>Chris Janson</b><br>WARNER MUSIC NASHVILLE/WAR                                   | 9                    | 17            |
| 18        | 21        | 19            | 38           | <b>WHAT HAPPENS IN A SMALL TOWN</b><br>D.HUFF (B.GILBERT,R.AKINS,B.BERRYHILL,J.DUNNE)  | <b>Brantley Gilbert + Lindsay Ell</b><br>VALORY                                     | 10                   | 18            |
| 19        | 18        | 17            | 29           | <b>BUY MY OWN DRINKS</b><br>D.HUFF (H.MULHOLLAND,J.WAYNE,N.COOKE,H.LINDSEY,J.KEAR)   | <b>Runaway June</b><br>WHEELHOUSE   | 8                    | 17            |
| 20        | 22        | 23            | 27           | <b>THE BONES</b><br>G.KURSTIN (M.MORRIS,J.ROBBINS,L.VELTZ)   | <b>Maren Morris</b><br>COLUMBIA NASHVILLE   | 45                   | 20            |
| 21        | 24        | 21            | 17           | <b>WE WERE</b><br>D.HUFF,K.URBAN (E.CHURCH,J.HYDE,R.TYNDELL)   | <b>Keith Urban</b><br>HIT RED/CAPITOL NASHVILLE                                     | 12                   | 18            |
| 22        | 23        | 22            | 24           | <b>EVERY LITTLE THING</b><br>C.BROWN (R.DICKERSON,P.WELLING,C.BROWN)   | <b>Russell Dickerson</b><br>TRIPLE TIGERS   | 13                   | 22            |
| 23        | 19        | 20            | 16           | <b>WHAT IF I NEVER GET OVER YOU</b><br>D.HUFF (S.ELLIS,J.GREEN,R.J.HURD,L.VELTZ)   | <b>Lady Antebellum</b><br>BMLG  | 15                   | 14            |
| 24        | 25        | 26            | 8            | <b>IT ALL COMES OUT IN THE WASH</b><br>J.JOYCE (M.LAMBERT,H.LINDSEY,L.MCKENNA,L.ROSE)  | <b>Miranda Lambert</b><br>VANNER/RCA NASHVILLE                                      | 18                   | 24            |
| 25        | 27        | 31            | 8            | <b>REMEMBER YOU YOUNG</b><br>D.HUFF,J.FRASURE,THOMAS RHETT (THOMAS RHETT,J.FRASURE,A.GORLEY) <span style="float:right">★★ Streaming Gainer ★★</span> | <b>Thomas Rhett</b><br>VALORY   | 16                   | 25            |



21

**KEITH URBAN**  
We Were

The track climbs 24-21, helped by a 5% lift to 19.2 million in radio audience, as it pushes 14-12 on Country Airplay, and a 10% boost to 2,000 downloads sold.



28

**LUKE COMBS**  
Even Though I'm Leaving

Combs' new single flies 42-28 on Hot Country Songs, sparked by a 172% burst to 5.4 million in radio reach, as it jumps 45-31 on Country Airplay, and a 13% charge to 3.2 million U.S. streams.

# billboard Hot Country Songs

SALES, AIRPLAY & STREAMING DATA COMPILED BY  
**nielsen MUSIC**

| THIS WEEK | LAST WEEK | TWO WEEKS AGO | WKS ON CHART | TITLE<br><small>PRODUCER (SONGWRITER)</small>  | Artist<br><small>IMPRINT / PROMOTION LABEL</small>                                 | COUNTRY AIRPLAY RANK | PEAK POSITION |
|-----------|-----------|---------------|--------------|--|--|----------------------|---------------|
| 26        | 26        | 15            | 3            | <b>HEARTLESS</b><br>DIPLO, KING HENRY, CHARLIE HANDSOME, J. MOI (T.W. PENTZ, H.A. ALLEN, M. WALLEN, E.K. SMITH, R.J. HURD, CHARLIE HANDSOME) | <b>Diplo Presents Thomas Wesley Featuring Morgan Wallen</b><br>MAD DECENT/COLUMBIA | -                    | 15            |
| 27        | 28        | 27            | 29           | <b>REDNECKER</b><br>J. MOI, D. COHEN (A. ALBERT, M.W. HARDY, J.M. SCHMIDT)   | <b>HARDY</b><br>TREE VIBEZ/BIG LOUD  | 28                   | 23            |
| 28        | 42        | 41            | 13           | <b>EVEN THOUGH I'M LEAVING</b><br>S. MOFFATT (L. COMBS, W.B. DURRETTE, R. FULCHER)   | <b>Luke Combs</b><br>RIVER HOUSE/COLUMBIA NASHVILLE                                | 31                   | 12            |
| 29        | 30        | 29            | 10           | <b>DIVE BAR</b><br>G. BROOKS (M. ROSSELL, B. KENNEDY, T.G. BROOKS)   | <b>Garth Brooks &amp; Blake Shelton</b><br>PEARL                                   | 19                   | 29            |
| 30        | 29        | 28            | 35           | <b>BACK TO LIFE</b><br>J. DEE, G. LEVOX, J.D. ROONEY (C.R. BARLOWE, N. MOON, S. MOONEY, F. WILHELM)  | <b>Rascal Flatts</b><br>BIG MACHINE  | 17                   | 28            |
| 31        | 35        | 30            | 3            | <b>HELL RIGHT</b><br>S. HENDRICKS (D.A. GARCIA, B. TYLER, M.W. HARDY)  | <b>Blake Shelton Featuring Trace Adkins</b><br>WARNER MUSIC NASHVILLE/WMN          | 27                   | 30            |
| 32        | 10        | -             | 2            | <b>SOON YOU'LL GET BETTER</b><br>J.M. ANTONOFF, T. SWIFT (T. SWIFT, J.M. ANTONOFF)   | <b>Taylor Swift Featuring Dixie Chicks</b><br>REPUBLIC                             | -                    | 10            |
| 33        | 32        | 35            | 26           | <b>RIDIN' ROADS</b><br>Z. CROWELL (D. LYNCH, A. GORLEY, Z. CROWELL)  | <b>Dustin Lynch</b><br>BROKEN BOW  | 24                   | 26            |
| 34        | 33        | 34            | 13           | <b>HEARTACHE MEDICATION</b><br>J. PARDI, B. BUTLER, R. GORE (J. PARDI, BARY DEAN, N. HEMBY)  | <b>Jon Pardi</b><br>CAPITOL NASHVILLE  | 23                   | 33            |
| 35        | 31        | 39            | 14           | <b>MR. LONELY</b><br>D. HUFF, S. MCANALLY, J. OSBORNE (J. CARSON, C. DUDDY, M. WYSTRACH, S. MCANALLY, J. OSBORNE)                            | <b>Midland</b><br>BIG MACHINE  | 26                   | 31            |
| 36        | 34        | 32            | 22           | <b>THOUGHT ABOUT YOU</b><br>B. GALLIMORE, T. MCGRAW (L.T. MILLER, B. WARREN, B.D. WARREN)  | <b>Tim McGraw</b><br>MCGRAW/COLUMBIA NASHVILLE                                     | 20                   | 26            |
| 37        | 40        | 45            | 7            | <b>SLOW DANCE IN A PARKING LOT</b><br>P. DIGIOVANNI (J. DAVIS, L.L. FOWLER)  | <b>Jordan Davis</b><br>MCA NASHVILLE   | 33                   | 37            |
| 38        | 43        | 40            | 14           | <b>MAKE ME WANT TO</b><br>A. BOWERS, E. TORRES (J. ALLEN, P. SIKES, J. DENMARK)  | <b>Jimmie Allen</b><br>STONEY CREEK  | 25                   | 38            |
| 39        | 45        | 44            | 24           | <b>HOMESICK</b><br>D. HUFF (K. BROWN, B. BERRYHILL, M.J. MCGINN, T. PHILLIPS)  | <b>Kane Brown</b><br>ZONE 4/RCA NASHVILLE  | 32                   | 24            |
| 40        | 39        | 38            | 15           | <b>SOMEONE I USED TO KNOW</b><br>ANDREW WATT (Z.A. BROWN, A. WOTMAN, N. MOON, B. SIMONETTI, S. MENDES)                                       | <b>Zac Brown Band</b><br>ZB COLLECTIVE/BMG/WHEELHOUSE                              | 30                   | 27            |
| 41        | 36        | 36            | 30           | <b>TO A T</b><br>D. HUFF, A. ESHUIS (R.J. HURD, N. SPICER, L. VELTZ)   | <b>Ryan Hurd</b><br>RCA NASHVILLE  | 35                   | 35            |
| 42        | 41        | 43            | 9            | <b>MORE HEARTS THAN MINE</b><br>S. ELLIS, J. ANDRESS (I. ANDRESS, S. ELLIS, D. SOUTHERLAND)  | <b>Ingrid Andress</b><br>ATLANTIC/WARNER MUSIC NASHVILLE/WEA                       | 29                   | 40            |
| 43        | 38        | 37            | 19           | <b>I HOPE</b><br>R. COPPERMAN (Z. KALE, J.M. NITE, G. BARRETT)   | <b>Gabby Barrett</b><br>WARNER MUSIC NASHVILLE/WAR                                 | 55                   | 31            |
| 44        | 44        | 42            | 5            | <b>I WISH GRANDPAS NEVER DIED</b><br>D. HUFF (R. GREEN, L. BONDS, B. GREEN)  | <b>Riley Green</b><br>BMLG   | 37                   | 32            |
| 45        | 47        | 46            | 10           | <b>CATCH</b><br>D. HUFF (B. YOUNG, R. COPPERMAN, A. GORLEY)  | <b>Brett Young</b><br>BMLG   | 36                   | 43            |
| 46        | 46        | 49            | 3            | <b>CHASIN' YOU</b><br>J. MOI (J. MOORE, M. WALLEN, C. WISEMAN)   | <b>Morgan Wallen</b><br>BIG LOUD   | 49                   | 46            |
| 47        | 48        | 47            | 9            | <b>LONELY IF YOU ARE</b><br>C. DESTEFANO, C. RICE (C. RICE, L. RIMES, H. PHELPS)   | <b>Chase Rice</b><br>DACK JANIELS/BROKEN BOW                                       | 46                   | 43            |
| 48        | NEW       |               | 1            | <b>FAMILY TREE</b><br>M. REAVES, C. HAMMACK (C. HAMMACK, T. VERGES, G. SAMPSON)  | <b>Caylee Hammack</b><br>CAPITOL NASHVILLE   | 40                   | 48            |
| 49        | 37        | 33            | 20           | <b>DAY DRUNK</b><br>C. DESTEFANO (M. EVANS, C. DESTEFANO, L. ROBBINS)  | <b>Morgan Evans</b><br>WARNER MUSIC NASHVILLE/WEA                                  | RC                   | 29            |
| 50        | 50        | 48            | 9            | <b>DIE FROM A BROKEN HEART</b><br>J. ROBBINS, D. WELLS (M. MARLOW, T. DYE, J. SINGLETON, D. RUTTAN)  | <b>Maddie &amp; Tae</b><br>MERCURY   | 54                   | 43            |

The week's most popular country songs, ranked by radio airplay audience impressions as measured by Nielsen Music, sales data as compiled by Nielsen Music and streaming activity data from online music sources tracked by Nielsen Music. Descending titles below No. 25 are moved to recurrent after 20 weeks.

## COUNTRY MARKET WATCH

A Weekly National Music Sales Report

|                     | WEEKLY UNIT COUNT |                 |                 |
|---------------------|-------------------|-----------------|-----------------|
|                     | ALBUM CONSUMPTION | AUDIO ON-DEMAND | VIDEO ON-DEMAND |
| This Week           | 1,021,000         | 1,031,146,000   | 260,714,000     |
| Last Week           | 1,041,000         | 1,051,824,000   | 267,799,000     |
| Change              | -1.9%             | -2.0%           | -2.6%           |
| This Week Last Year | 965,000           | 834,123,000     | 204,470,000     |
| Change              | 5.8%              | 23.6%           | 27.5%           |

|                   | YEAR-TO-DATE   |                |        |
|-------------------|----------------|----------------|--------|
|                   | 2018           | 2019           | CHANGE |
| Album Consumption | 33,754,000     | 35,622,000     | 5.5%   |
| Album Sales       | 9,576,000      | 6,702,000      | -30.0% |
| Audio On-Demand   | 28,026,531,000 | 35,288,352,000 | 25.9%  |
| Video On-Demand   | 7,173,457,000  | 9,239,664,000  | 28.8%  |

| YEAR-OVER-YEAR                 |               |
|--------------------------------|---------------|
| <b>ALBUM CONSUMPTION</b>       |               |
| '18                            | 33.75 million |
| '19                            | 35.62 million |
| <b>TOTAL ON-DEMAND STREAMS</b> |               |
| '18                            | 35.20 billion |
| '19                            | 44.53 billion |

All data measures U.S. activity as of the week ending September 5, 2019. All units counts are rounded to the nearest thousand. Album consumption units — also known as albums plus TEA plus SEA — consists of album sales; track-equivalent album (TEA) sales whereby 10 tracks equal one consumption unit; and stream equivalent albums (SEA) whereby 1,250 paid and/or 3,750 ad-supported audio on-demand streams (OAD) equal one consumption unit.

nielsen MUSIC

For inquiries about any Nielsen Music data, please contact Josh Bennett at 615-807-1338 or [josh.bennett@nielsen.com](mailto:josh.bennett@nielsen.com)

**billboard** TOP COUNTRY ALBUMS

SALES, DATA  
COMPILED BY  
**nielsen**  
**MUSIC**

| THIS WEEK | LAST WEEK | 2 WEEKS AGO | WEEKS ON CHART | ARTIST<br>IMPRINT & NUMBER / DISTRIBUTING LABEL                     | TITLE                       | CERT. | PEAK POS. |
|-----------|-----------|-------------|----------------|---|-----------------------------|-------|-----------|
| 1         | 2         | 1           | 118            | LUKE COMBS<br>RIVER HOUSE/COLUMBIA NASHVILLE 538883*/SMN            | THIS ONE'S FOR YOU          | 2     | 1         |
| 2         | NEW       | 1           | 1              | SHERYL CROW<br>VALORY SHC100A*/BMLG                                 | THREADS                     |       | 2         |
| 3         | 3         | 2           | 63             | DAN + SHAY<br>WARNER MUSIC NASHVILLE 570796/WMN                     | DAN + SHAY                  | ●     | 1         |
| 4         | 4         | 3           | 66             | MORGAN WALLEN<br>BIG LOUD DIGITAL EX                                | IF I KNOW ME                |       | 3         |
| 5         | NEW       | 1           | 1              | TRISHA YEARWOOD<br>GWENDOLYN 5900*                                  | EVERY GIRL                  |       | 5         |
| 6         | 5         | 5           | 227            | CHRIS STAPLETON<br>MERCURY 019405*/UMGN                             | TRAVELLER                   | 4     | 1         |
| 7         | 6         | 4           | 13             | LUKE COMBS<br>RIVER HOUSE/COLUMBIA NASHVILLE 595688 EX/SMN          | THE PREQUEL (EP)            |       | 1         |
| 8         | 7         | 6           | 73             | JASON ALDEAN<br>MACON/BROKEN BOW/BMG 538375642*/BBMG (538375730)    | REARVIEW TOWN               | ●     | 1         |
| 9         | 11        | 9           | 43             | KANE BROWN<br>ZONE 4/RCA NASHVILLE/SMN                              | EXPERIMENT                  |       | 1         |
| 10        | 10        | 7           | 14             | THOMAS RHETT<br>VALORY TR0400A*/BMLG                                | CENTER POINT ROAD           |       | 1         |
| 11        | 13        | 12          | 215            | ZAC BROWN BAND<br>ROAR/SOUTHERN GROUND/ATLANTIC 546369/AG           | GREATEST HITS SO FAR...     |       | 3         |
| 12        | 12        | 8           | 26             | MAREN MORRIS<br>COLUMBIA NASHVILLE 590186*/SMN                      | GIRL                        |       | 1         |
| 13        | 15        | 11          | 144            | KANE BROWN<br>ZONE 4/RCA NASHVILLE 530947*/SMN                      | KANE BROWN                  | ■     | 1         |
| 14        | 14        | 10          | 29             | FLORIDA GEORGIA LINE<br>BMLG FGL0400*                               | CAN'T SAY I AIN'T COUNTRY   |       | 1         |
| 15        | 1         | -           | 2              | MIDLAND<br>BIG MACHINE ML0200A/BMLG                                 | LET IT ROLL                 |       | 1         |
| 16        | 17        | 13          | 168            | JON PARDI<br>CAPITOL NASHVILLE 024744*/UMGN                         | CALIFORNIA SUNRISE          | ■     | 1         |
| 17        | 31        | -           | 26             | ELVIS PRESLEY<br>RCA/SONY STRATEGIC MARKETING GROUP /LEGACY (25.98) | THE ESSENTIAL ELVIS PRESLEY | ■     | 15        |
| 18        | 16        | 14          | 70             | KACEY MUSGRAVES<br>MCA NASHVILLE 027921*/UMGN                       | GOLDEN HOUR                 | ●     | 1         |
| 19        | 19        | 15          | 104            | THOMAS RHETT<br>VALORY TR0300A/BMLG                                 | LIFE CHANGES                | ■     | 1         |
| 20        | 18        | 21          | 51             | CARRIE UNDERWOOD<br>CAPITOL NASHVILLE 028557*/UMGN                  | CRY PRETTY                  | ●     | 1         |
| 21        | 23        | 18          | 187            | TIM MCGRAW<br>CURB 79205 (13.98)                                    | NUMBER ONE HITS             | ■     | 6         |
| 22        | 21        | 16          | 202            | BLAKE SHELTON<br>WARNER MUSIC NASHVILLE 551788/WMN                  | RELOADED: 20 #1 HITS        |       | 2         |
| 23        | 22        | 17          | 192            | GEORGE STRAIT<br>MCA NASHVILLE 000459/UMGN (25.98)                  | 50 NUMBER ONES              | 7     | 1         |
| 24        | 24        | 20          | 134            | BRETT YOUNG<br>BMLG BY0100A*  | BRETT YOUNG                 | ■     | 2         |
| 25        | 20        | 19          | 196            | TAYLOR SWIFT<br>BIG MACHINE 310400A*/BMLG (18.98)                   | RED                         | 7     | 1         |

Top Country Albums ranks the most popular country albums of the week, as compiled by Nielsen Music, based on multi-metric consumption (blending traditional album sales, track equivalent albums, and streaming equivalent albums). Copyright 2019, Prometheus Global Media, LLC and Nielsen Music, Inc. All rights reserved.

**billboard** COUNTRY STREAMING SONGS

| THIS WEEK | LAST WEEK | WKS ON CHART | TITLE<br>ARTIST  |
|-----------|-----------|--------------|--|
| 1         | 1         | 13           | THE GIT UP<br>BLANCO BROWN                                   |
| 2         | 4         | 9            | ONE THING RIGHT<br>MARSHMELLO & KANE BROWN                   |
| 3         | 3         | 17           | BEER NEVER BROKE MY HEART<br>LUKE COMBS                      |
| 4         | 5         | 22           | GOD'S COUNTRY<br>BLAKE SHELTON                               |
| 5         | 6         | 15           | KNOCKIN' BOOTS<br>LUKE BRYAN                                 |
| 6         | 7         | 59           | SPEECHLESS<br>DAN + SHAY                                     |
| 7         | 10        | 126          | TENNESSEE WHISKEY<br>CHRIS STAPLETON                         |
| 8         | 8         | 29           | WHISKEY GLASSES<br>MORGAN WALLEN                             |
| 9         | 9         | 70           | BEAUTIFUL CRAZY<br>LUKE COMBS                                |
| 10        | 12        | 93           | MEANT TO BE<br>BEBE REXHA & FLORIDA GEORGIA LINE             |
| 11        | 11        | 18           | ALL TO MYSELF<br>DAN + SHAY                                  |
| 12        | 14        | 29           | RUMOR<br>LEE BRICE   |
| 13        | 13        | 96           | HEAVEN<br>KANE BROWN   |
| 14        | 16        | 9            | REARVIEW TOWN<br>JASON ALDEAN                                |
| 15        | 15        | 30           | TALK YOU OUT OF IT<br>FLORIDA GEORGIA LINE                   |
| 16        | 17        | 80           | TEQUILA<br>DAN + SHAY  |
| 17        | 18        | 3            | HEARTLESS<br>DIPO PRESENTS THOMAS WESLEY FEAT. MORGAN WALLEN |
| 18        | 23        | 6            | I DON'T KNOW ABOUT YOU<br>CHRIS LANE                         |
| 19        | 22        | 84           | YOU MAKE IT EASY<br>JASON ALDEAN                             |
| 20        | 19        | 2            | ONE MAN BAND<br>OLD DOMINION                                 |
| 21        | 20        | 10           | THE BONES<br>MAREN MORRIS                                    |
| 22        | 24        | 56           | SHE GOT THE BEST OF ME<br>LUKE COMBS                         |
| 23        | RE-ENTRY  |              | HURRICANE<br>LUKE COMBS                                      |
| 24        | 25        | 29           | GOOD AS YOU<br>KANE BROWN                                    |
| 25        | 2         | 2            | SOON YOU'LL GET BETTER<br>TAYLOR SWIFT FEAT. DIXIE CHICKS    |

The week's top-streamed and top-selling paid download country songs, respectively, from sales reports collected and provided by Nielsen Music. Charts update weekly on Tuesdays at [www.Billboard.Biz/charts](http://www.Billboard.Biz/charts). Copyright 2019, Prometheus Global Media, LLC and Nielsen Music, Inc. All rights reserved.

**billboard** COUNTRY DIGITAL SONG SALES

STREAMING & SALES  
DATA COMPILED BY  
**nielsen**  
**MUSIC**

| THIS WEEK | LAST WEEK | WKS ON CHART | TITLE<br>ARTIST                                 |
|-----------|-----------|--------------|---|
| 1         | 1         | 14           | THE GIT UP<br>BLANCO BROWN                      |
| 2         | 4         | 9            | ONE THING RIGHT<br>MARSHMELLO & KANE BROWN      |
| 3         | 5         | 18           | BEER NEVER BROKE MY HEART<br>LUKE COMBS         |
| 4         | 6         | 23           | GOD'S COUNTRY<br>BLAKE SHELTON                  |
| 5         | 2         | 4            | PRAYED FOR YOU<br>MATT STELL                    |
| 6         | 7         | 23           | KNOCKIN' BOOTS<br>LUKE BRYAN                    |
| 7         | 8         | 12           | ONE MAN BAND<br>OLD DOMINION                    |
| 8         | 9         | 63           | SPEECHLESS<br>DAN + SHAY                        |
| 9         | RE-ENTRY  |              | EVEN THOUGH I'M LEAVING<br>LUKE COMBS           |
| 10        | 15        | 10           | I DON'T KNOW ABOUT YOU<br>CHRIS LANE            |
| 11        | 10        | 41           | WHISKEY GLASSES<br>MORGAN WALLEN                |
| 12        | 22        | 38           | RUMOR<br>LEE BRICE                              |
| 13        | 12        | 3            | HELL RIGHT<br>BLAKE SHELTON FEAT. TRACE ADKINS  |
| 14        | 17        | 190          | TENNESSEE WHISKEY<br>CHRIS STAPLETON            |
| 15        | 13        | 8            | TIP OF MY TONGUE<br>KENNY CHESNEY               |
| 16        | 18        | 5            | I WISH GRANDPAS NEVER DIED<br>RILEY GREEN       |
| 17        | NEW       |              | DRIVE<br>TIM MCGRAW                             |
| 18        | 21        | 7            | LIVING<br>DIERKS BENTLEY                        |
| 19        | RE-ENTRY  |              | BEAUTIFUL CRAZY<br>LUKE COMBS                   |
| 20        | RE-ENTRY  |              | THE BONES<br>MAREN MORRIS                       |
| 21        | 24        | 4            | REDNECKER<br>HARDY                              |
| 22        | NEW       |              | ONE NIGHT STANDARDS<br>ASHLEY MCBRYDE           |
| 23        | 25        | 16           | SOUTHBOUND<br>CARRIE UNDERWOOD                  |
| 24        | RE-ENTRY  |              | WHAT IF I NEVER GET OVER YOU<br>LADY ANTEBELLUM |
| 25        | 19        | 17           | ALL TO MYSELF<br>DAN + SHAY                     |

**billboard** AMERICANA/FOLK ALBUMS

SALES DATA  
COMPILED BY  
**nielsen**  
**MUSIC**

| THIS WEEK | LAST WEEK | 2 WEEKS AGO | WEEKS ON CHART | ARTIST<br>IMPRINT & NUMBER / DISTRIBUTING LABEL         | TITLE                               | CERT. | PEAK POS. |
|-----------|-----------|-------------|----------------|---|-------------------------------------|-------|-----------|
| 1         | NEW       | 1           | 1              | SHERYL CROW<br>VALORY SHC100A*/BMLG                     | THREADS                             |       | 1         |
| 2         | 11        | 4           | 4              | BON IVER<br>JAG.JAGUWAR (350)                           | I, I                                |       | 1         |
| 3         | 1         | 1           | 173            | CHRIS STAPLETON<br>MERCURY NASHVILLE 019405*/UMGN       | TRAVELLER                           | 4     | 1         |
| 4         | 4         | 2           | 75             | KACEY MUSGRAVES<br>MCA NASHVILLE 027921*/UMGN           | GOLDEN HOUR                         | ●     | 1         |
| 5         | 5         | 6           | 136            | SIMON & GARFUNKEL<br>COLUMBIA 31350/LEGACY              | SIMON AND GARFUNKEL'S GREATEST HITS |       | 3         |
| 6         | 7         | 8           | 219            | HOZIER<br>RUBYWORKS 309996*/COLUMBIA                    | HOZIER                              | 2     | 1         |
| 7         | 6         | 5           | 5              | TYLER CHILDERS<br>HICKMAN HOLLER 596034*/RCA            | COUNTRY SQUIRE                      |       | 1         |
| 8         | 9         | 9           | 130            | JACK JOHNSON<br>JACK JOHNSON/BURNSHIRE/REPUBLIC (13.98) | IN BETWEEN DREAMS                   | 2     | 6         |
| 9         | 10        | 12          | 122            | CHRIS STAPLETON<br>MERCURY NASHVILLE 026379*/UMGN       | FROM A ROOM: VOLUME 1               | ■     | 1         |
| 10        | 8         | 7           | 178            | THE LUMINEERS<br>DUALTONE 1738*                         | CLEOPATRA                           | ■     | 1         |

Americana/Folk Albums ranks the most popular Americana/folk albums of the week, as compiled by Nielsen Music, based on multi-metric consumption (blending traditional album sales, track equivalent albums, and streaming equivalent albums). Copyright 2019, Prometheus Global Media, LLC and Nielsen Music, Inc. All rights reserved.



22

ASHLEY MCBRYDE

One Night Standards

The singer-songwriter's new track, which she co-penned, previews her upcoming sophomore album. It sold 3,000 downloads in its first week and opens at No. 22 on Country Digital Song Sales.



MAKIN' TRACKS TOM ROLAND [tom.roland@billboard.com](mailto:tom.roland@billboard.com)

# Kip Moore Digs Into His Past For A Look At His Potential Future In 'She's Mine'

East Coast girls are hip, **The Beach Boys** once declared, and Southern girls with the way they talk, they'll knock you out.

One thing about **Brian Wilson** and **Mike Love**, they took a stand when they created a now-classic sexual travelogue, professing their preference for "California Girls."

**Kip Moore's** new country single, "She's Mine," takes a similar route, searching major cities and small towns in the Western Hemisphere. But the guy in the song has no preconceived notions about what the woman of his dreams might look like or where she might be waiting.

"I'm not just looking for a certain type," says Moore. "I wanted to make it very clear that the spectrum is broad — every ethnicity, every walk of life. I didn't want to narrow it down to just these supermodel-type people."

"She's Mine" owes a lot to the early part of Moore's career. Its pulsing, eighth-note guitar foundation leans on the heartland-rock influences that earned him frequent comparisons to **Bruce Springsteen** during that era. And its jet-setter hodgepodge of far-flung locales is directly tied to his original radio promotion tour in 2011, when he visited programmers across America to support his debut single, "Mary Was the Marrying Kind."

"Living in South Georgia, the blueprint is already kind of laid out for you," he says. "You know that you're going to end up with somebody down there, and that's cool. There's no knock on that, it's just that that's all I knew. Then all of a sudden, I get thrust into this world where I'm meeting so many different walks of life, so many different cultures, and it's a lot to take in. What was going to come at me as far as life? Where was this all going to take me?"

And the most important question of them all: Who was he going to end up with?

With all that going on his head, Moore pulled into a Music Row writing appointment during that period with two frequent co-writers, **Scott Stepakoff** ("Mary Was the Marrying Kind") and **Dan Couch** ("Somethin' Bout a Truck," "Last Shot"). He started strumming a guitar at the session and instinctively sang what would become the first line: "Love," then a five-beat vocal pause before the follow-up thought: "I've been looking for a while." That led to the introduction of a map and a continent full of possibilities that gets explored fully in the chorus: "Maybe she's in Dallas," sang Moore, pinning the first top in Texas. "Cheering for the Cowboys," Couch chimed in.

"There's such an iconic connection to the Dallas Cowboy cheerleaders," Couch says. "Everybody would get that."

The trip continued across three different choruses: maybe she's vacationing in Mexico, working on Wall Street, dealing blackjack in Las Vegas or living like a hippie on the West Coast.

"I lived in Los Angeles for nine years; I was single, and I played in a band," says Stepakoff, suggesting that California image is likely from his experiences. "There was a period in my life where I went to a lot of **Grateful Dead** shows, and I've always been very inspired and brought up on music of

the late '60s and '70s. 'Hippie girl' comes up a lot in my songs over the years. She always will have a place in my heart."

While those female archetypes offer a one-dimensional view of a potential mate, some of the others — a God-fearing girl with a devilish streak, a lonely woman in a crowded city cafe — are immediately more complex.

"I don't know who that girl is going to be that Kip ends up settling down with," says Couch. "But I think it could be any one of those mentioned in the song."

The chorus trims the space between the phrases, and when they launched into the bridge — Stepakoff singing, "Tell her I'm running, I'm coming, I'm sorry I'm late" over Moore's off-the-cuff melody — the thoughts are comparatively piled on top of each other, changing the texture of the song and adding some urgency to its message.

It seemed like a winner, but Moore couldn't quite settle on how best to arrange the song, and didn't want to rush it if it wasn't ready.

"People would think that part is the simple part," says Moore. "But a lot of times, the songs that feel simple, like 'She's Mine' — it just has such a straight-forward feel to it. It's the hardest to capture that."

Moore left it off his *Up All Night* album but recorded a version for his sophomore set, *Wild Ones*. The label thought it was a potential single, but Moore considered it "too slick," he says, and declined to include it on the album. Finally, while touring the United Kingdom in May, he started playing it backstage and figured out a sinewy approach to the intro,

which essentially has the lead guitar playing a heavy version of the verse melody atop a drum beat that resembles **John Mellencamp's** "Hurts So Good."

Within two weeks, Moore headed into The Castle in Franklin, Tenn., to record it with a band that featured guitarist **Tom Bukovac**, keyboardist **Dave Cohen**, bassist **Rich Brinsfield** and drummer **Matt Bubel**, laying down a scratch vocal for the group to work with while Moore produced the session himself. Guitarist **Danny Rader** came in at a later date to stack the eighth-note pulsing guitars, creating a fuller sound. And Moore did a bunch of his own backing vocals, finding ways to disguise his voice and keeping it low in the final mix, creating the kind of spirit that accompanies a mass singalong at the end of a concert.

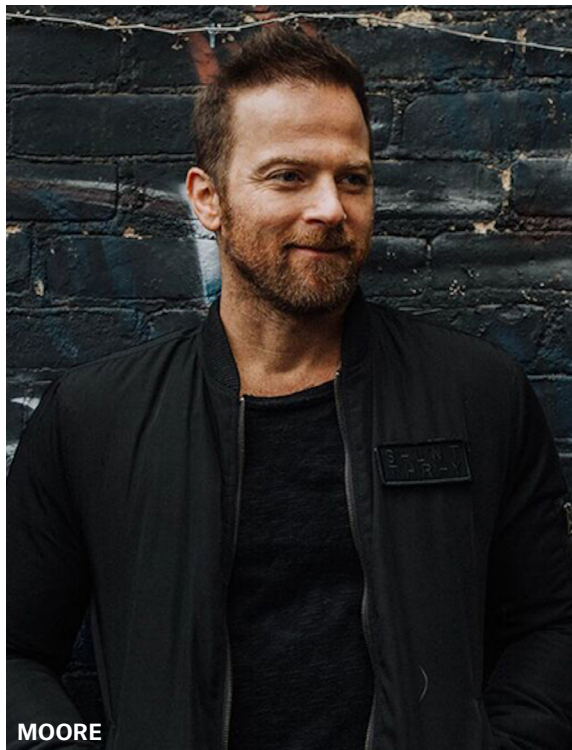
"Feels like little old pieces of American rock'n'roll, doesn't it?" asks Moore rhetorically.

Moore had several options for a first single, though "She's Mine" won out, finally making it into the market about eight years after it was originated.

"We always kind of felt like it was a hit, and Kip never forgot about it," says Stepakoff. "He always believed in it. It's one of many things that makes him such an effective artist. He's just so laser-focused and deliberate about what he does."

MCA sent it to terrestrial radio through PlayMPE on Aug. 12, and it appears on the current Most Added and New & Active charts. Meanwhile, Moore has grown more accustomed to the touring lifestyle that was new when he wrote "She's Mine." The words are still relevant — he's still single, and still uncertain about what lies ahead in his love life.

"And," he adds, "I still don't have a type." ●



# billboard Country Indicator

| THIS WEEK | LAST WEEK | WKS ON CHART | TITLE Imprint/Label                                    | Artist                           | PLAYS     |      | AUDIENCE (IN MILLIONS) |
|-----------|-----------|--------------|--|----------------------------------|-----------|------|------------------------|
|           |           |              |  |                                  | THIS WEEK | +/-  | THIS WEEK              |
| 1         | 1         | 24           | KNOCKIN' BOOTS Capitol Nashville                       | Luke Bryan                       | 5184      | -89  | 8.180                  |
| 2         | 3         | 28           | LIVING Capitol Nashville                               | Dierks Bentley                   | 5127      | +401 | 7.702                  |
| 3         | 4         | 20           | SOUTHBOUND Capitol Nashville                           | Carrie Underwood                 | 4749      | +268 | 6.996                  |
| 4         | 2         | 39           | THE ONES THAT DIDN'T MAKE IT BACK HOME Valory          | Justin Moore                     | 4568      | -472 | 7.467                  |
| 5         | 5         | 41           | BUY MY OWN DRINKS Wheelhouse                           | Runaway June                     | 4327      | +223 | 6.500                  |
| 6         | 10        | 34           | I DON'T KNOW ABOUT YOU Big Loud                        | Chris Lane                       | 4088      | +519 | 6.421                  |
| 7         | 7         | 35           | LOVE YOU TOO LATE Warner Music Nashville/WMN           | Cole Swindell                    | 3938      | +148 | 5.775                  |
| 8         | 9         | 17           | WE WERE Hit Red/Capitol Nashville                      | Keith Urban                      | 3707      | +106 | 5.374                  |
| 9         | 12        | 26           | GOOD VIBES Warner Music Nashville/WAR                  | Chris Janson                     | 3540      | +360 | 5.393                  |
| 10        | 11        | 36           | WHAT HAPPENS IN A SMALL TOWN Valory                    | Brantley Gilbert & Lindsay Ell   | 3312      | +47  | 4.813                  |
| 11        | 13        | 17           | WHAT IF I NEVER GET OVER YOU BMLG                      | Lady Antebellum                  | 3105      | +136 | 4.356                  |
| 12        | 14        | 9            | TIP OF MY TONGUE Blue Chair/Warner Music Nashville/WEA | Kenny Chesney                    | 3089      | +227 | 4.508                  |
| 13        | 15        | 21           | PRAYED FOR YOU RECORDS/Arista Nashville                | Matt Stell                       | 2982      | +189 | 4.581                  |
| 14        | 17        | 33           | EVERY LITTLE THING Triple Tigers                       | Russell Dickerson                | 2739      | +283 | 4.065                  |
| 15        | 16        | 9            | REMEMBER YOU YOUNG Valory                              | Thomas Rhett                     | 2725      | +199 | 3.941                  |
| 16        | 18        | 8            | IT ALL COMES OUT IN THE WASH Vanner/RCA Nashville      | Miranda Lambert                  | 2596      | +172 | 3.795                  |
| 17        | 19        | 12           | DIVE BAR Pearl   | Garth Brooks Feat. Blake Shelton | 2451      | +62  | 3.364                  |
| 18        | 22        | 22           | MR. LONELY Big Machine                                 | Midland                          | 1979      | +185 | 2.523                  |
| 19        | 24        | 4            | HELL RIGHT Warner Music Nashville/WMN                  | Blake Shelton Feat. Trace Adkins | 1913      | +238 | 2.735                  |
| 20        | 23        | 13           | ONE MAN BAND RCA Nashville                             | Old Dominion                     | 1910      | +178 | 2.587                  |
| 21        | 21        | 27           | REDNECKER TVM/Big Loud                                 | HARDY                            | 1887      | +10  | 2.544                  |
| 22        | 25        | 15           | HEARTACHE MEDICATION Capitol Nashville                 | Jon Pardi                        | 1760      | +236 | 2.154                  |
| 23        | 26        | 19           | SLOW DANCE IN A PARKING LOT MCA Nashville              | Jordan Davis                     | 1331      | +100 | 1.540                  |
| 24        | 27        | 23           | MAKE ME WANT TO Stoney Creek                           | Jimmie Allen                     | 1137      | +79  | 1.440                  |
| 25        | 39        | 2            | EVEN THOUGH I'M LEAVING River House/Columbia Nashville | Luke Combs                       | 1117      | +545 | 1.646                  |
| 26        | 28        | 14           | EVERY GIRL IN THIS TOWN Gwendolyn/Pearl                | Trisha Yearwood                  | 1109      | +63  | 1.523                  |
| 27        | 33        | 4            | I WISH GRANDPAS NEVER DIED BMLG                        | Riley Green                      | 1042      | +208 | 1.460                  |
| 28        | 30        | 6            | HOMESICK Zone 4/RCA Nashville                          | Kane Brown                       | 1039      | +51  | 1.424                  |
| 29        | 29        | 14           | CATCH BMLG   | Brett Young                      | 1038      | +8   | 1.043                  |
| 30        | 31        | 29           | AFTER A FEW Mercury                                    | Travis Denning                   | 952       | +89  | 0.951                  |

## BILLBOARD COUNTRY INDICATOR PANEL — 109 STATIONS

|                        |      |                     |      |                      |      |                         |                    |
|------------------------|------|---------------------|------|----------------------|------|-------------------------|--------------------|
| Abilene, Texas         | KEAN | Fargo, N.D.         | KBVB | Laurel, Miss.        | WBBN | San Luis Obispo, Calif. | KKJG               |
| Alexandria, La.        | KRRV |                     | WSTH | Lebanon, N.H.        | WXXX | Santa Barbara, Calif.   | KRAZ               |
| Amarillo, Texas        | KGNC | Fayetteville, N.C.  | WKML | Lincoln, Neb.        | KFGE | Santa Maria, Calif.     | KNSI               |
| Asheville, N.C.        | WKSF | Flagstaff, Ariz.    | KAFF | Longview, Texas      | KYKX | Sheboygan, Wis.         | WBFM               |
| Atlantic City, N.J.    | WPUR | Flint, Mich.        | WFBE | Lubbock, Texas       | KLLL | Savannah, Ga.           | WJCL               |
| Beaumont, Texas        | KYKR | Florence, Ala.      | WXFL | Lufkin, Texas        | KYKS |                         | WUBB               |
| Beckley, W. Va.        | WJLS | Florence, S.C.      | WEGX | Marshalltown, Iowa   | KXIA | Shreveport, La.         | KXKS               |
| Biloxi, Miss.          | WZKX | Ft. Collins, Colo.  | KUAD | Mason City, Iowa     | KIAI | Sioux City, Iowa        | KSUX               |
| Bloomington, Ill.      | WIBL | Ft. Smith, Ark.     | KTCS | Medford, Ore.        | KRWQ | South Bend, Ind.        | WBYT               |
| Bluefield, W. Va.      | WHKX | Frederick, Md.      | WFRE | Meridian, Miss.      | WOKK | Springfield, Ill.       | WFMB               |
| Burlington, Vt.        | WOKO | Fredericksburg, Va. | WFLS | Milwaukee, WI.       | WKTI | Springfield, Mo.        | KTTS               |
| Cape Girardeau, Mo.    | KEZS | Green Bay, Wis.     | WNCY | Montgomery, Ala.     | WLWI | Terre Haute, Ind.       | WTHI               |
| Charleston, W. Va.     | WKWS | Hagerstown, Md.     | WAYZ | Morgantown, W. Va.   | WKKW | Topeka, Kan.            | WIBW               |
|                        | WQBE | Hot Springs, Ark.   | KQUS | Muskegon, Mich.      | WMUS | Traverse City, Mich.    | WTCM               |
| College Station, Texas | KAGG | Huntington, Ky.     | WDGG | New London, Conn.    | WCTY | Tupelo, Miss.           | WWZD               |
| Colorado Springs.      | KCCY | Huntington, W. Va.  | WTCR | Odessa, Texas        | KHKX | Utica, N.Y.             | WFRG               |
| Columbia, Mo.          | KCLR | Idaho Falls, Idaho  | KTHK | Palm Springs, Calif. | KPLM | Victor Valley, CA.      | KATJ               |
| Columbus, Ga.          | WKNB | Jackson, Miss.      | WMSI | Pensacola, Fla.      | WXBM | Waco, Texas             | WACO               |
|                        | WSTH |                     | WUSJ | Peoria, Ill.         | WXCL | Wausau, Wis.            | WDEZ               |
| Cookeville, Tenn.      | WGSQ | Janesville, Wis.    | WJVL | Poughkeepsie, N.Y.   | WRWD | Wheeling, W. Va.        | WOVK               |
| Dothan, Ala.           | WTVY | Jonesboro, Ark.     | KDXY | Rapid City, S.D.     | KOUT | Williamsport, Pa.       | WILQ               |
| Duluth, Minn.          | KKCB | Joplin, Mo.         | KIXQ | Rockford, Ill.       | WXXQ | Yakima, Wash.           | KXDD               |
| Eau Claire, Wis.       | WAXX | Kalamazoo, Mich.    | WNWN | Rocky Mount, N.C.    | WDWG | Youngstown, Ohio        | WQXX               |
| Elizabeth City, N.C.   | WRSF | Kalispell, Mont.    | KDBR | Saginaw, Mich.       | WCEN |                         | WWGY               |
| Erie, Pa.              | WTWF | Kingmah, Ariz.      | KFLG | St. Cloud, Minn.     | KZPK | Westwood One            | HOT COUNTRY        |
| Eugene, Ore.           | KKNU | Lafayette, Ind.     | WKOA | Salina, Kan.         | KYEZ | Music Choice            | MAINSTREAM COUNTRY |
| Evansville, Ind.       | WKDQ | Laredo, Texas       | KRRG | Salisbury, Md.       | WKTT | Sirius XM               | TODAY'S COUNTRY    |
|                        |      | Lansing, Mich.      | WITL | San Angelo, Texas    | KGKL |                         | THE HIGHWAY        |

# billboard Country Indicator

| THIS WEEK | LAST WEEK | WKS ON CHART | TITLE Imprint/Label   | Artist                           | PLAYS     |      | AUDIENCE (IN MILLIONS) |
|-----------|-----------|--------------|---|----------------------------------|-----------|------|------------------------|
|           |           |              |   |                                  | THIS WEEK | +/-  | THIS WEEK              |
| 31        | 34        | 23           | RIDIN' ROADS Broken Bow   | Dustin Lynch                     | 910       | +76  | 1.199                  |
| 32        | 32        | 26           | SOMEONE I USED TO KNOW ZB Collective/BMG/Wheelhouse                     | Zac Brown Band                   | 875       | +39  | 1.312                  |
| 33        | 35        | 14           | HOMEMADE Big Loud   | Jake Owen                        | 764       | +38  | 0.810                  |
| 34        | 36        | 7            | NOTHIN' ON YOU CoJo/Warner Music Nashville/WMN                          | Cody Johnson                     | 706       | +100 | 0.950                  |
| 35        | 37        | 16           | FAMILY TREE Capitol Nashville   | Caylee Hammack                   | 688       | +96  | 0.772                  |
| 36        | 38        | 13           | LET'S MAKE A LOVE SONG Almost Country                                   | Casey Donahew                    | 594       | +17  | 0.719                  |
| 37        | 51        | 3            | MORE HEARTS THAN MINE Atlantic/Warner Music Nashville/WEA               | Ingrid Andress                   | 499       | +189 | 0.622                  |
| 38        | 43        | 11           | SUNSHINE Southern Halo  | Southern Halo                    | 471       | +30  | 0.581                  |
| 39        | 42        | 12           | DIE FROM A BROKEN HEART Mercury Nashville                               | Maddie & Tae                     | 468       | +20  | 0.532                  |
| 40        | 44        | 10           | IN AMERICA Dylan Jakobsen/IAE   | Dylan Jakobsen                   | 455       | +22  | 0.538                  |
| 41        | 45        | 5            | DETAILS Mercury   | Billy Currington                 | 449       | +23  | 0.562                  |
| 42        | 47        | 14           | THAT'S COUNTRY BRO Show Dog Nashville                                   | Toby Keith                       | 422       | +6   | 0.540                  |
| 43        | 46        | 6            | CHASIN' YOU Big Loud  | Morgan Wallen                    | 420       | +4   | 0.518                  |
| 44        | 48        | 18           | IN BETWEEN Triple Tigers  | Scotty McCreery                  | 415       | +26  | 0.441                  |
| 45        | NEW       |              | MONSTERS EMI Nashville  | Eric Church                      | 414       | +200 | 0.508                  |
| 46        | 49        | 14           | GOOD LORD Black River   | Abby Anderson                    | 361       | +8   | 0.435                  |
| 47        | 50        | 5            | MADE IN AMERICA Lawrence  | Tracy Lawrence                   | 353       | +18  | 0.419                  |
| 48        | NEW       |              | HOMECOMING QUEEN? Black River   | Kelsea Ballerini                 | 342       | +342 | 0.599                  |
| 49        | 40        | 17           | THAT'LL BE THE DAY Forge  | Lucas Hoge                       | 340       | -227 | 0.314                  |
| 50        | 53        | 7            | TO BE WITH YOU Dream Walkin'  | Smith & Wesley                   | 319       | +22  | 0.383                  |
| 51        | 52        | 8            | TO AT RCA Nashville   | Ryan Hurd                        | 314       | +16  | 0.267                  |
| 52        | 54        | 8            | JUST FOR A MINUTE White Knuckle   | Frank Ray                        | 304       | +20  | 0.406                  |
| 53        | NEW       |              | ONE BIG COUNTRY SONG Wheelhouse   | LOCASH                           | 291       | +55  | 0.212                  |
| 54        | 60        | 2            | THE BONES Columbia Nashville  | Maren Morris                     | 274       | +38  | 0.364                  |
| 55        | 56        | 7            | THE GIT UP TralierTrapMusic/BBMG/BMG/Wheelhouse/Stoney Creek/Broken Bow | Blanco Brown                     | 267       | +20  | 0.253                  |
| 56        | 58        | 3            | COUNTRY ROAD DDS Entertainment  | Tony Jackson                     | 260       | +18  | 0.315                  |
| 57        | 59        | 3            | A LITTLE LESS LONELY Dreamlined/Nightlife                               | Marty Heddin                     | 257       | +18  | 0.356                  |
| 58        | NEW       |              | APRIL MAY Bison Creek   | James Robert Webb                | 250       | +25  | 0.307                  |
| 59        | 57        | 6            | BACKYARD Studio2Bee/Star Farm Nashville                                 | Chance McKinney                  | 236       | -8   | 0.297                  |
| 60        | RE-ENTRY  |              | SMOKY MOUNTAIN RAIN G-Force/Riser House                                 | Ronnie Milsap Feat. Dolly Parton | 235       | +11  | 0.292                  |

## CHARTS LEGEND

### RANKINGS

Country Airplay is ranked by total audience impressions for the week ending Sunday based on monitored airplay of 149 stations by Nielsen BDS. Audience totals on the chart are derived, in part, using certain Arbitron Inc. copyrighted Persons 12+ audience estimates (under license © 2019, Arbitron Inc.) Country Indicator is tabulated using reported playlists and Nielsen BDS-monitored airplay at 109 stations, ranked by total plays.

### BULLETS

● Awarded on Country Airplay to titles gaining audience or remaining flat from the previous week. A song will also receive a bullet if its percentage loss in audience does not exceed the percentage of monitored

station downtime for the format. Titles that decline in audience but increase in detections will also receive a bullet if the total audience erosion for the week does not exceed 3%. Bullets are awarded on Country Indicator to titles gaining plays or remaining flat from the previous week.

### TIES

On Country Airplay, if two songs are tied in total audience, the song with the larger increase in audience is placed first. On Country Indicator, if two songs are tied in total plays, the song with the larger increase in plays is placed first.

### RECURRENTS

On Country Airplay, descending titles below No. 10 in either audience or detections are moved to recurrent after 20 weeks, provided that they are not still

gaining enough audience points to bullet or if they rank below No. 10 and post a third consecutive week of (non-bulleted) audience decline, regardless of total chart weeks. On Country Indicator, descending, non-bulleted titles below No. 10 are moved to recurrent after 20 weeks or if they post a third consecutive week of decline in plays after 10 weeks.

### HOT SHOT DEBUT

Awarded to the highest-ranking new entry on Country Airplay and Country Indicator, respectively.

### MOST ADDED

The total number of new adds officially reported to Billboard by each reporting station, or by an automatic-add threshold (seven plays for the first time in a chart tracking week, according to Nielsen BDS) for stations that do not report adds.

### MOST INCREASED AUDIENCE/PLAYS

Most Increased Audience on Country Airplay and Most Increased Plays on Country Indicator list the songs with the greatest week-to-week increases in total audience or plays, respectively.

### AIRPOWER

Awarded on Country Airplay to titles ranking inside top 20 in plays and audience rankings for the first time, with increases in both plays and audience.

### BREAKER

Awarded on Country Airplay to titles achieving airplay (at least one detection) at 60% of reporting stations for the first time.

billboard Country Airplay Index

TITLE Publishing-Licensing Org. (Songwriter) Chart Position

A

AFTER A FEW I'm About To Go RED On Ya Music, BMI/Travis Denning Music, BMI/Ole, BMI/Crack The Glass Songs, BMI/Stars And Stripes And Maple Leaf Music, BMI/Downtown DMP Songs, BMI/Sound Wagon Songs, BMI/WB Music Corp., ASCAP/Music Of The Corn, ASCAP (T.Denning, K.Archer, J.Weaver) 39

B

BACK TO LIFE W.B.M. Music Corp., SESAC/Bennett's Dad's Songs, SESAC/Songs Of Rhythm House Black, SESAC/Niko Moon Publishing, SESAC/Roc Nation US Music, SESAC/Shay Mooney Music, BMI/Warner-Tamerlane Publishing Corp., BMI/Farm Thang Music, BMI/Me Gusta Music, BMI (C.R.Barlowe, N.Moon, S.Mooney, F.Wilhelm) 17

BEER NEVER BROKE MY HEART Big Machine Music, ASCAP/50 Egg Music, BMI/Straight Dimes Publishing, BMI/Warner-Tamerlane Publishing Corp., BMI/Sullivan S Guns Music, BMI/Super Big Music, ASCAP/Jett Music, ASCAP (L.Combs, R.Montana, J.Singleton) 4

THE BONES International Dog Music, BMI/Downtown DMP Songs, BMI/Jammy Robbins Music, ASCAP/Round Hill Songs Jimmy Robbins, ASCAP/Extraordinary Alien Publishing, ASCAP/Oh Denise Publishing, BMI/Warner-Tamerlane Publishing Corp., BMI/Big Music Machine, BMI (M.Morris, J.Robbins, L.Veltz) 45

BUY MY OWN DRINKS BMG Platinum Songs, BMI/BMG Silver Songs, SESAC/BMG Gold Songs, ASCAP/Rezonate Music, ASCAP/BIRB Music, ASCAP/Champagne Whiskey Publishing, ASCAP/Downtown DJL Songs, ASCAP/Legends Of Magic Mustang Music, SESAC/Music Of Platinum Pen, SESAC/Wild Wild West Songs, SESAC/Thunder Cookie, SESAC/Magic Mustang Music Inc., BMI/Songwriters Of Platinum Pen Publishing, BMI/Hannah Mulholland Music, BMI (H.Mulholland, J.Wayne, N.Cooke, H.Lindsey, J.Kear) 8

C

CATCH Super Big Music, ASCAP/caliville Publishing, ASCAP/EMI Blackwood Music Inc., BMI/Plain Jane Songs, BMI/Rezolant Music, BMI/Round Hill Songs II, ASCAP/Combustion Engine Music, ASCAP/WB Music Corp., ASCAP (B.Young, R.Copperman, A.Gorley) 36

CHASIN' ME True To The Song, BMI (C.D.Jones) 56

CHASIN' YOU BMG Gold Songs, ASCAP/Team Destiny, ASCAP/JMLZ Music, ASCAP/Big Loud Mountain, BMI/Round Hill Songs BLS JW, ASCAP/Big Loud Proud Songs, ASCAP/Red Toe Rocker, ASCAP (J.Moore, M.Wallen, C.Wiseham) 49

D

DETAILS WB Music Corp., ASCAP/Future Heartbeat Publishing, ASCAP/Warner-Tamerlane Publishing Corp., BMI/A Boy Named Ford, BMI/Sixty Circus Music, ASCAP/Roc Nation Music, ASCAP/Songs Of Rhythm House Red, ASCAP (M.Trussell, N.Galyon, S.L.Olsen) 50

DIE FROM A BROKEN HEART Super Big Music, ASCAP/Seven Red Bids Publishing, ASCAP/Big Music Machine, BMI/ehovah Nissi, BMI/Jeje Music, ASCAP/WB Music Corp., ASCAP/Thankful For This Music, ASCAP/Doc And Maggie Music, SOCAN (M.Marlow, T.Dye, J.Singleton, D.Ruttan) 54

DIVE BAR Rezemblance Music, BMI/Songs Of Reehits, BMI/Boy Rivers Publishing, BMI/Cowboy Hat Trick, ASCAP/Major Bob Music, Inc., ASCAP/No Fences Music, ASCAP (M.Rossell, B.Kennedy, T.G.Brooks) 19

DON'T LET HER Spark In Your Pocket, BMI/Songs Of Smack, BMI/Songs Of Kobalt Music Publishing America, Inc., BMI/DLM Ave, ASCAP/Songs In The Key Of Claire, ASCAP/Patriot Games Publishing, ASCAP/Smack Hits, GMR/Kobalt Music Group Ltd., GMR (W.Hayes, A.D.Roberts, S.McAnally) 57

E

EVEN THOUGH I'M LEAVING Big Music Machine, BMI/50 Egg Music, BMI/Straight Dimes Publishing, BMI/Big Machine Music, ASCAP/Island South, SESAC/Rosest Music, SESAC/Larkin Hill Publishing, BMI/Warner-Tamerlane Publishing Corp., BMI/Works For RHA Music, BMI (L.Combs, W.B.Durrette, R.Fulcher) 51

EVERY GIRL IN THIS TOWN Goes Something Like THIS Music, BMI/Songs Of The Corn, BMI/Warner-Tamerlane Publishing Corp., BMI/Make It Better Music, BMI (C.Smith, Erik Dylan, C.Harrington) 54

EVERY LITTLE THING BMG Platinum Songs, BMI/Kailey's Dream, BMI/So Essential Tunes, SESAC/Not Just Another Song Publishing, SESAC/Hillbilly Science And Research Publishing, SESAC/Trailerilly Music, SESAC (R.Dickerson, P.Welling, C.Brown) 13

F

FAMILY TREE Universal Music Corp., ASCAP/Sounds Like Chet Publishing, ASCAP/Songs Of Universal, Inc., BMI/Low Z Music, BMI/1217 Songs, ASCAP/Still Working For The Woman, ASCAP/Kobalt Songs Music Publishing LLC, ASCAP (C.Hammack, T.Verges, G.Samson) 40

FRONT SEAT Totally Awesome Music, BMI (J.Jordan) 58

G

THE GIT UP Blanco Theory, SESAC (B.A.III) 48

H

GOOD VIBES Ole Red Vinyl Music, BMI/Spirit Two Nashville, ASCAP/Miller Crow Music, ASCAP/Round Hill Songs II, ASCAP/Caleb's College Fund, ASCAP (C.Janson, Z.Crowell, A.Gorley) 9

H

HEARTACHE MEDICATION Sony/ATV Countryside, BMI/Cowboy And Gus Publishing, BMI/Happy Song Factory, BMI/Pulse Nation, BMI/Creative Pulse Music, BMI/These Are Pulse Songs, BMI/Songs Of MV2, BMI (J.Pardi, Bary Dean, N.Hemby) 23

HELL RIGHT Spirit Two Nashville, ASCAP/4TheKidz Music, ASCAP/Warner-Tamerlane Publishing Corp., BMI/Sonofgroceries Music, BMI/Extremely Combustible Music, BMI/Music Of One77, BMI/Songs Of Kobalt Music Publishing America, Inc., BMI/Relative Music Group, BMI (D.A.Garcia, B.Tyler, M.W.Hardy) 27

HER WORLD OR MINE Songs Of Universal, Inc., BMI/I'm About To Go RED On Ya Music, BMI/BMG Platinum Songs, BMI/Music Of Big Deal, BMI/Stalefish Music, BMI (J.Paulin, T.Denning, B.Beavers) 47

HOMECOMING QUEEN? Sony/ATV Accent, ASCAP/Round Hill Songs II, ASCAP/JRMS, ASCAP/Muse Magic, ASCAP/Warner-Tamerlane Publishing Corp., BMI/A Boy Named Ford, BMI (K.Ballerini, J.Robbins, N.Galyon) 22

HOMEMADE BMG Gold Songs, ASCAP/Songs Of Big Deal, ASCAP/Go For The Goldsmith, ASCAP/Mullins It Over Music, BMI/Tree Vibe Music, LLC, BMI/Warner-Tamerlane Publishing Corp., BMI/Works Of RHA Music, BMI/Oak Tree Swing Publishing, BMI/New Writers Of Sea Gayle Music, BMI/Not A Track Guy Music, BMI (B.Goldsmith, J.Mullins, D.Parker, B.Pinson) 43

HOMESICK Songs Of Universal, Inc., BMI/Kane Brown Music, BMI/Warner-Tamerlane Publishing Corp., BMI/Don't Be A Gypsy, BMI/Smackworks Music, SESAC/Kobalt Group Music Publishing, SESAC/Smack Blue, LLC, SESAC/TDP Publishing, BMI (K.Brown, B.Berryhill, M.McGinn, T.Phillips) 32

I

I DON'T KNOW ABOUT YOU Round Hill Songs II, ASCAP/Caleb's College Fund, ASCAP/WB Music Corp., ASCAP/Who Wants To Buy My Publishing, ASCAP/Relative Music Group, BMI/One77 Songs, ASCAP/Highly Combustible Music, ASCAP/Kobalt Songs Music Publishing LLC, ASCAP (A.Gorley, M.W.Hardy, H.Phelps, J.Rodgers) 55

I HOPE Sony/ATV Countryside, BMI/Revinyl House, BMI/EMI April Music, Inc., ASCAP/Nite Writer Music, ASCAP/Gabby Barrett Publishing Designee, BMI (Z.Kale, J.M.Nite, G.Barrett) 55

IN BETWEEN Dagu Music, BMI/Austintatious, Tunes, BMI/Spirit Cataloge Holdings, S.A.R.L./Spirit Two Nashville, ASCAP/House Of Sea Gayle Music, ASCAP/Party Of Five Music, ASCAP/WB Music Corp., ASCAP/Super Big Music, ASCAP/Jett Music, ASCAP (S.McCreery, F.Rogers, J.L.Alexander, J.Singleton) 42

IT ALL COMES OUT IN THE WASH Sony/ATV Tree Publishing, BMI/Pink Dog Publishing, BMI/BIRB Music, ASCAP/BMG Gold Songs, ASCAP/Maps And Records Music, BMI/Creative Pulse Music, BMI/These Are Pulse Songs, BMI/Songs Of Crazy Girl Music, BMI/Warner-Tamerlane Publishing Corp., BMI (M.Lambert, H.Lindsey, L.McKenna, L.Rose) 18

I WISH GRANDPAS NEVER DIED Warner-Tamerlane Publishing Corp., BMI/Riley Green Publishing Designee, BMI (R.Green, L.Bonds, B.Green) 37

K

KNOCKIN' BOOTS BIRB Music, ASCAP/BMG Gold Songs, ASCAP/Still Working For The Woman, ASCAP/Kobalt Songs Music Publishing LLC, ASCAP/EMI April Music, Inc., ASCAP/Nite Writer Music, ASCAP (H.Lindsey, G.Samson, J.M.Nite) 1

L

LIVING EMI Blackwood Music Inc., BMI/Plain Jane Songs, BMI/Rezolant Music, BMI/EMI April Music, Inc., ASCAP/Nite Writer Music, ASCAP/Combustion Engine Music, ASCAP/WB Music Corp., ASCAP/Round Hill Songs II, ASCAP/Dude Lanes, ASCAP/Kobalt Songs Music Publishing LLC, ASCAP (R.Copperman, J.M.Nite, A.Gorley, D.Bentley) 3

LONELY IF YOU ARE Sony/ATV Countryside, BMI/Back Janiels Publishing, BMI/EMI Blackwood Music Inc., BMI/Koala 1 Tunes, BMI/WB Music Corp., ASCAP/Who Wants To Buy My Publishing, ASCAP (C.Rice, L.Rimes, H.Phelps) 46

LOVE YOU TOO LATE Sony/ATV Tree Publishing, BMI/Golden Rainey Music, BMI/Sony/ATV Cross Keys Publishing, ASCAP/243 Music, ASCAP/Peermusic III, Ltd., BMI/Whiskey Tub Music, BMI (C.Swinnell, M.R.Carter, B.Kinney) 7

M

MAKE ME WANT TO Red Lining Music, SESAC/Sony/ATV Lakewiew, SESAC/Amplified Hour Songs, SESAC/Pedal Down Music, ASCAP/Sounds Of Soperman Music Publishing, ASCAP/Curb Songs, ASCAP/Dreamark Publishing, ASCAP (J.Allen, P.Sikes, J.Denmark) 25

MONSTERS Sony/ATV Tree Publishing, BMI/Longer And Louder Music, BMI/Mammaw's Fried Okra Music, BMI/Little Louder Songs, BMI/Songs Of Kobalt Music Publishing America, Inc., BMI (E.Church, J.Hyde) 35

MORE HEARTS THAN MINE Songs Of Universal, Inc., BMI/Straight From The Art Music, BMI/Songs For A Stone Heat, BMI/Universal Music Corp., ASCAP/Happy Rock Publishing, ASCAP (I.Anadess, S.Ellis, D.Southerland) 29

MR. LONELY WB Music Corp., ASCAP/Tip Top Music, ASCAP/Tropical Cowboy Publishing, ASCAP/Warner-Tamerlane Publishing Corp., BMI/Kitt Cass Publishing Corporation, BMI/Smack Hits, GMR/Smack Songs LLC, GMR/Kobalt Music Group Ltd., GMR/Sony/ATV Cross Keys Publishing, ASCAP/Smackville Music, ASCAP/Smack Songs LLC, ASCAP/Kobalt Songs Music Publishing LLC, ASCAP (J.Carson, C.Duddy, M.Wystrach, S.McAnally, J.Osborne) 26

N

NO STONE UNTURNED EMI Blackwood Music Inc., BMI/Little Britches Music, BMI/Round Hill Compositions, BMI/Natalia's Music Money, BMI (R.Houser, D.Davison) 60

NOTHING TO DO TOWN Curb Songs, ASCAP/Curb Congregation Songs, SESAC/Music Good Vibes Publishing, BMI/Good Times Music, SESAC/Universal Music Corp., ASCAP/No Bridge Publishing, ASCAP (D.Scott, M.Aloerman, C.Taylor) 38

O

NOTHIN' ON YOU Gray Dog Music, BMI/WB Music Corp., ASCAP/Whiskey Holler Music, ASCAP (B.Baber, T.W.Wilmon) 59

O

ONE BIG COUNTRY SONG Songs Of Roc Nation Music, BMI/Warner-Tamerlane Publishing Corp., BMI/Telemetry Rhythm House Music, BMI/Round Hill Songs II, ASCAP/Caleb's College Fund, ASCAP/Relative Music Group, BMI/Songs Of Kobalt Music Publishing America, Inc., BMI (J.Frasure, A.Gorley, M.W.Hardy) 41

ONE MAN BAND WB Music Corp., ASCAP/Smackville Music, ASCAP/Smack Songs LLC, ASCAP/Kobalt Songs Music Publishing LLC, ASCAP/Rezsongs, ASCAP/Reehits World, ASCAP/Smacktown Music, ASCAP/Smack Blue, LLC, ASCAP/Sony/ATV Cross Keys Publishing, ASCAP/Unfair Entertainment, ASCAP/McGusta Music, ASCAP/We're Really Doin' It Publishing, ASCAP (J.Osborne) 21

THE ONES THAT DIDN'T MAKE IT BACK HOME Big Music Machine, BMI/Double Barrel Ace Music, BMI/Universal Music Corp., ASCAP/Puillywood Music, ASCAP/Songs Of Universal, Inc., BMI/Plum Nelly, BMI/Ole Red Cape Songs, ASCAP/Real Big Red Tunes, ASCAP (J.Moore, P.DiGiovanni, C.McGill, J.S.Stover) 2

P

PRAYED FOR YOU Pedal Down Music, ASCAP/Big Spaces Music, BMI/Tunes Of Big Deal Music, BMI/Songs Of Portertied Music, SESAC/Sony/ATV Countryside, BMI/Sony/ATV Accent, ASCAP (M.Stell, A.Bowers, A.Cruz) 11

R

REDNECKER Buzz Light Beer Music, ASCAP/Downtown DJL Songs, ASCAP/Relative Music Group, BMI/WB Music Corp., ASCAP/Freshy Music, ASCAP/We-Volve Music, ASCAP (A.Albert, M.W.Hardy, J.M.Schmidt) 28

REMEMBER YOU YOUNG EMI Blackwood Music Inc., BMI/Cricket On The Line, BMI/Warner-Tamerlane Publishing Corp., BMI/Telemetry Rhythm House Music, BMI/Songs Of Roc Nation Music, BMI/Combustion Engine Music, ASCAP/WB Music Corp., ASCAP/Round Hill Songs II, ASCAP/Caleb's College Fund, ASCAP (Thomas Rhett, J.Frasure, A.Gorley) 16

RIDIN' ROADS Magic Mustang Music Inc., BMI/Warner-Tamerlane Publishing Corp., BMI/Round Hill Songs II, ASCAP/Caleb's College Fund, ASCAP/Spirit Two Nashville, ASCAP/Miller Crow Music, ASCAP/Kyler's Kinda Night, ASCAP (D.Lynch, A.Gorley, Z.Crowell) 24

S

SLOW DANCE IN A PARKING LOT Ole Red Cape Songs, ASCAP/Jordan Davis Music, ASCAP/Amylage Songs - N.Such, ASCAP/Machino Cowlicks Music, ASCAP/WB Music Corp., ASCAP (J.Davis, L.L.Fowler) 35

SLOWER Crv Angel Songs, BMI/Anything But Typical Music, BMI/Memory Days, SESAC/Son Of Austin Songs, ASCAP/Curb Worospring Music, SESAC/Ward Music, LLC, ASCAP/WB Music Corp., ASCAP/W.B.M. Music Corp., SESAC (T.Himire, S.D.Jones, J.Edgar) 51

SOMEONE I USED TO KNOW Weimerhound Music, BMI/Dar For The Dead Publishing, SESAC/Reach Music Tunes, SESAC/Andrew Watt Music, BMI/Songs Of Kobalt Music Publishing America, Inc., BMI/Siva Moon Publishing, SESAC/W.B.M. Music Corp., SESAC/Simonetti Music Publishing, SESAC/Kobalt Group Music Publishing, SESAC/Songs Of Universal, Inc., BMI/Mendes Music, BMI (Z.A.Brown, A.Woman, N.Moon, B.Simonetti, S.Mendes) 30

SOUTHBOUND Carrie-Okie Music, BMI/Universal Music - Brentwood Benson Publishing, ASCAP/D Soul Music, ASCAP/Capitol CMG Genesys, ASCAP/Jack T Publishing, BMI/Songs Of The Corn, BMI/Warner-Tamerlane Publishing Corp., BMI (C.Underwood, D.A.Garcia, J.Miller) 6

T

THOUGHT ABOUT YOU Warner-Tamerlane Publishing Corp., BMI/The Country And Western Music, BMI/Round Hill Works, BMI/Big Loud Proud Crowd, BMI/Big Loud Broad Music, BMI/Big Loud Brett Songs, BMI (L.T.Miller, B.Warren, B.D.Warren) 20

TIP OF MY TONGUE Sony/ATV Acuff Rose Music, BMI/Basuare Music, BMI/EMI Blackwood Music Inc., BMI/Rezolant Music, BMI/Sony/ATV Songs LLC, BMI/Sony/ATV Music Publishing UK Ltd, PRS/Ed Sheeran Limited, PRS (K.Chesney, R.Copperman, E.C.Sheeran) 14

TO A T UNIVERSAL Music Corp., ASCAP/Lake Allegan Pub Club, ASCAP/Red Like The Sunset Music, ASCAP/Spoer And Everything Nicer, ASCAP/Ole Red Cape Songs, ASCAP/Big Music Machine, BMI/Never Veltz so good Publishing, BMI (R.J.Hurd, N.Spoer, L.Veltz) 35

W

WE WERE Sony/ATV Tree Publishing, BMI/Longer And Louder Music, BMI/Mammaw's Fried Okra Music, BMI/Little Louder Songs, BMI/Songs Of Kobalt Music Publishing America, Inc., BMI/Harolds Purple Heart Music, BMI (E.Church, J.Hyde, R.Tynael) 12

WHAT COULD'VE BEEN Maliburrito Music, BMI/Eletha Music, ASCAP/Warner-Tamerlane Publishing Corp., BMI/RRMD Music, BMI/Songs From Outer Space Music, BMI/WB Music Corp., ASCAP/Carver Music, ASCAP (C.Cailat, J.K.Young, J.Reeves, D.J.Reeves) 44

WHAT HAPPENS IN A SMALL TOWN Warner-Tamerlane Publishing Corp., BMI/Indiana Angel Music, BMI/Ritten by Rhett, BMI/Don't Be A Gypsy, BMI/Revelry Music, BMI/Badlands/MTM, BMI/Songs Of Kobalt Music Publishing America, Inc., BMI (G.Gilbert, R.Akins, B.Berryhill, J.Dunne) 10

WHAT IF I NEVER GET OVER YOU Universal Music Corp., ASCAP/Happy Rock Publishing, ASCAP/Dalmatian Music, PRS/Universal-Polygram Int. Tunes, Inc., SESAC/Songs Of Universal, Inc., BMI/Hurd-janz, BMI/Big Music Machine, BMI/Never Veltz So Good Publishing, BMI (S.Ellis, J.Green, R.J.Hurd, L.Veltz) 15

WORLD FOR TWO EMI Blackwood Music Inc., BMI/Plain Jane Songs, BMI/Rezolant Music, BMI/Songs Of Universal, Inc., BMI/Plum Nelly, BMI/Ole Red Cape Songs, ASCAP/Lets Get Brunch Publishing, BMI/Artist 101 Publishing Group, BMI (R.Copperman, J.Osborne, J.Abraham) 52

# billboard Hot Country Songs Index

**TITLE** Publishing-Licensing Org.  
(*Songwriter*) **Chart Position**

## A

**ALL TO MYSELF** Beats And Banjos, ASCAP/WB Music Corp., ASCAP/Shay Mooney Music, BMI/Warner-Tamerlane Publishing Corp., BMI/A Girl Named Charlie, BMI/Buckeye26, ASCAP/Ireynmusic, ASCAP (D.Smyers, S.Mooney, N.Galyon, J.Reynolds) 7

## B

**BACK TO LIFE** W.B.M. Music Corp., SESAC/Bennett's Dad's Songs, SESAC/Songs Of Rhythm House Black, SESAC/Niko Moon Publishing, SESAC/Roc Nation US Music, SESAC/Shay Mooney Music, BMI/Warner-Tamerlane Publishing Corp., BMI/Farm Thang Music, BMI/Me Gusta Music, BMI (C.R.Barlowe, N.Moon, S.Mooney, F.Wilhelm) 30

**BEER NEVER BROKE MY HEART** Big Machine Music, ASCAP/50 Egg Music, BMI/Straight Dimes Publishing, BMI/Warner-Tamerlane Publishing Corp., BMI/Sullivan S Guns Music, BMI/Super Big Music, ASCAP/Jett Music, ASCAP (L.Combs, R.Montana, J.Singleton) 3

**THE BONES** International Dog Music, BMI/Downtown DMP Songs, BMI/Jammy Robbins Music, ASCAP/Round Hill Songs Jimmy Robbins, ASCAP/Extraordinary Alien Publishing, ASCAP/Oh Denise Publishing, BMI/Warner-Tamerlane Publishing Corp., BMI/Big Music Machine, BMI (M.Morris, J.Robbins, L.Velzt) 20

**BUY MY OWN DRINKS** BMG Platinum Songs, BMI/BMG Silver Songs, SESAC/BMG Gold Songs, ASCAP/Rezonate Music, ASCAP/BIRB Music, ASCAP/Champagne Whiskey Publishing, ASCAP/Downtown DJ Songs, ASCAP/Legends Of Magic Mustang Music, SESAC/Music Of Platinum Pen, SESAC/Wild Wild West Songs, SESAC/Thunder Cookie, SESAC/Magic Mustang Music Inc., BMI/Songwriters Of Platinum Pen Publishing, BMI/Hannah Mulholland Music, BMI (H.Mulholland, J.Wayne, N.Cooke, H.Lindsey, J.Kear) 19

## C

**CATCH** Super Big Music, ASCAP/Caliville Publishing, ASCAP/EMI Blackwood Music Inc., BMI/Plain Jane Songs, BMI/Rezolant Music, BMI/Round Hill Songs II, ASCAP/Combustion Engine Music, ASCAP/WB Music Corp., ASCAP (B.Young, R.Copperman, A.Gorley) 45

**CHASIN' YOU** BMG Gold Songs, ASCAP/Team Destiny, ASCAP/JMZL Music, ASCAP/Big Loud Mountain, BMI/Round Hill Songs BLS JV, ASCAP/Big Loud Proud Songs, ASCAP/Red Toe Rocker, ASCAP (J.Moore, M.Wallen, C.Wiseman) 46

## D

**DAY DRUNK** Warner-Tamerlane Publishing Corp., BMI/SongsByMe, BMI/EMI April Music, Inc., ASCAP/CDS Words And Music, ASCAP/Hey Kiddo Music, ASCAP/Kobalt Songs Music Publishing LLC, ASCAP (M.Evans, C.DeStefano, L.Robbins) 49

**DIE FROM A BROKEN HEART** Super Big Music, ASCAP/Seven Red Brides Publishing, ASCAP/Big Music Machine, BMI/Jehovah Nissi, BMI/Jet Music, ASCAP/WB Music Corp., ASCAP/Thankful For This Music, ASCAP/Doc And Maggie Music, SOCAN (M.Marlow, T.Dye, J.Singleton, D.Ruttan) 50

**DIVE BAR** Rezemblance Music, BMI/Songs Of Reehits, BMI/Roy Rivers Publishing, BMI/Cowboy Hat Trick, ASCAP/Major Bob Music, Inc., ASCAP/No Fences Music, ASCAP (M.Rossell, B.Kennedy, T.G.Brooks) 29

## E

**EVEN THOUGH I'M LEAVING** Big Music Machine, BMI/50 Egg Music, BMI/Straight Dimes Publishing, BMI/Big Machine Music, ASCAP/Island South, SESAC/Rosest Music, SESAC/Larkin Hill Publishing, BMI/Warner-Tamerlane Publishing Corp., BMI/Works For RHA Music, BMI (L.Combs, W.B.Durrette, R.Fulcher) 28

**EVERY LITTLE THING** BMG Platinum Songs, BMI/Kailey's Dream, BMI/So Essential Tunes, SESAC/Not Just Another Song Publishing, SESAC/Hillbilly Science And Research Publishing, SESAC/Trailerilly Music, SESAC (R.Dickerson, P.Welling, C.Brown) 22

## F

**FAMILY TREE** Universal Music Corp., ASCAP/Sounds Like Chet Publishing, ASCAP/Songs Of Universal, Inc., BMI/Low Z Music, BMI/1217 Songs, ASCAP/Still Working For The Woman, ASCAP/Kobalt Songs Music Publishing LLC, ASCAP (C.Hammack, T.Verges, G.Sampson) 48

## G

**THE GIT UP** Blanco Theory, SESAC (B.A.III) 1

**GOD'S COUNTRY** Relative Music Group, BMI/Songs Of Kobalt Music Publishing America, Inc., BMI/WB Music Corp., ASCAP/Georgia Song Vibe, ASCAP/We-Volve Music, ASCAP/Warner-Tamerlane Publishing Corp., BMI/Neon Cross Music, BMI (M.W.Hardy, J.M.Schmidt, D.Dawson) 6

**GOOD VIBES** Ole Red Vinyl Music, BMI/Spirit Two Nashville, ASCAP/Miller Crow Music, ASCAP/Round Hill Songs II, ASCAP/Caleb's College Fund, ASCAP (C.Janson, Z.Crowell, A.Gorley) 17

## H

**HEARTACHE MEDICATION** Sony/ATV Countryside, BMI/Cowboy And Gus Publishing, BMI/Happy Song Factory, BMI/Pulse Nation, BMI/Creative Pulse Music, BMI/These Are Pulse Songs, BMI/Songs Of MV2, BMI (J.Pardi, Bary Dean, N.Hembry) 34

**HEARTLESS** I Like Turtles Music, ASCAP/KMR Music Royalties II SCSP, ASCAP/Kobalt Songs Music Publishing LLC, ASCAP/Duke City Music, SESAC/KMR Music Royalties II SCSp., SESAC/Kobalt Group Music Publishing, SESAC/Big Loud Mountain, BMI/Tree Vibe Music, LLC, BMI/Songs Of Universal, Inc., BMI (T.W.Pentz, H.A.Allen, M.Wallen, E.K.Smith, R.J.Hurd, Charlie Handsome) 26

**HELL RIGHT** Spirit Two Nashville, ASCAP/4TheKidz Music, ASCAP/Warner-Tamerlane Publishing Corp., BMI/Sonofgroceries Music, BMI/Extremely Combustible Music, BMI/Music Of One77, BMI/Songs Of Kobalt Music Publishing America, Inc., BMI/Relative Music Group, BMI (D.A.Garcia, B.Tyler, M.W.Hardy) 31

**HOMESICK** Songs Of Universal, Inc., BMI/Kane Brown Music, BMI/Warner-Tamerlane Publishing Corp., BMI/Don't Be A Gypsy, BMI/Smackworks Music, SESAC/Kobalt Group Music Publishing, SESAC/Smack Blue, LLC, SESAC/TDP Publishing, BMI (K.Brown, B.Berryhill, M.J.McGinn, T.Phillips) 39

## I

**I DON'T KNOW ABOUT YOU** Round Hill Songs II, ASCAP/Caleb's College Fund, ASCAP/WB Music Corp., ASCAP/Who Wants To Buy My Publishing, ASCAP/Relative Music Group, BMI/One77 Songs, ASCAP/Highly Combustible Music, ASCAP/Kobalt Songs Music Publishing LLC, ASCAP (A.Gorley, M.W.Hardy, H.Phelps, J.Rodgers) 9

**I HOPE** Sony/ATV Countryside, BMI/Revinyl House, BMI/EMI April Music, Inc., ASCAP/Nite Writer Music, ASCAP/Gabby Barrett Publishing Designee, BMI (Z.Kale, J.M.Nite, G.Barrett) 43

**IT ALL COMES OUT IN THE WASH** Sony/ATV Tree Publishing, BMI/Pink Dog Publishing, BMI/BIRB Music, ASCAP/BMG Gold Songs, ASCAP/Maps And Records Music, BMI/Creative Pulse Music, BMI/These Are Pulse Songs, BMI/Songs Of Crazy Girl Music, BMI/Warner-Tamerlane Publishing Corp., BMI (M.Lambert, H.Lindsey, L.McKenna, L.Rose) 24

**I WISH GRANDPAS NEVER DIED** Warner-Tamerlane Publishing Corp., BMI/Riley Green Publishing Designee, BMI (R.Green, L.Bonds, B.Green) 44

## K

**KNOCKIN' BOOTS** BIRB Music, ASCAP/BMG Gold Songs, ASCAP/Still Working For The Woman, ASCAP/Kobalt Songs Music Publishing LLC, ASCAP/EMI April Music, Inc., ASCAP/Nite Writer Music, ASCAP (H.Lindsey, G.Sampson, J.M.Nite) 2

## L

**LIVING** EMI Blackwood Music Inc., BMI/Plain Jane Songs, BMI/Rezolant Music, BMI/EMI April Music, Inc., ASCAP/Nite Writer Music, ASCAP/Combustion Engine Music, ASCAP/WB Music Corp., ASCAP/Round Hill Songs II, ASCAP/DudeTunes, ASCAP/Kobalt Songs Music Publishing LLC, ASCAP (R.Copperman, J.M.Nite, A.Gorley, D.Bentley) 11

**LOVELY IF YOU ARE** Sony/ATV Countryside, BMI/Dack Janiels Publishing, BMI/EMI Blackwood Music Inc., BMI/Koala T Tunes, BMI/WB Music Corp., ASCAP/Who Wants To Buy My Publishing, ASCAP (C.Rice, L.Rimes, H.Phelps) 47

**LOVE YOU TOO LATE** Sony/ATV Tree Publishing, BMI/Colden Rainey Music, BMI/Sony/ATV Cross Keys Publishing, ASCAP/243 Music, ASCAP/Peermusic III, Ltd., BMI/Whiskey Tub Music, BMI (C.Swindell, M.R.Carter, B.Kinney) 14

## M

**MAKE ME WANT TO** Red Lining Music, SESAC/Sony/ATV Lakeview, SESAC/Amplified Hour Songs, SESAC/Pedal Down Music, ASCAP/Sounds Of Soperman Music Publishing, ASCAP/curb Songs, ASCAP/Dreamark Publishing, ASCAP (J.Allen, P.Sikes, J.Denmark) 38

**MORE HEARTS THAN NINE** Songs Of Universal, Inc., BMI/Straight From The Art Music, BMI/Songs For A Stone Heat, BMI/Universal Music Corp., ASCAP/Happy Rock Publishing, ASCAP (L.Andress, S.Ellis, D.Southerland) 42

**MR. LONELY** WB Music Corp., ASCAP/TipTop Music, ASCAP/Tropical Cowboy Publishing, ASCAP/Warner-Tamerlane Publishing Corp., BMI/Kitt Cass Publishing Corporation, BMI/Smack Hits, GMR/Smack Songs LLC, GMR/Kobalt Music Group Ltd., GMR/Sony/ATV Cross Keys Publishing, ASCAP/Smackville Music, ASCAP/Smack Songs LLC, ASCAP/Kobalt Songs Music Publishing LLC, ASCAP (J.Carson, C.Duddy, M.Wystrach, S.McAnally, J.Osborne) 35

## O

**ONE MAN BAND** WB Music Corp., ASCAP/Smackville Music, ASCAP/Smack Songs LLC, ASCAP/Kobalt Songs Music Publishing LLC, ASCAP/Rezsongs, ASCAP/Reehits World, ASCAP/Smacktown Music, ASCAP/Smack Blue, LLC, ASCAP/Sony/ATV Cross Keys Publishing, ASCAP/Unfair Entertainment, ASCAP/MeGusta Music, ASCAP/We're Really Doin' It Publishing, ASCAP/Universal Music Corp., ASCAP (M.Ramsey, T.Rosen, B.Tursi, J.Osborne) 15

**THE ONES THAT DIDN'T MAKE IT BACK HOME** Big Music Machine, BMI/Double Barrel Ace Music, BMI/Universal Music Corp., ASCAP/Paulywood Music, ASCAP/Songs Of Universal, Inc., BMI/Plum Nelly, BMI/Ole Red Cape Songs, ASCAP/Real Big Red Tunes, ASCAP (J.Moore, P.D.Giovanni, C.McGill, J.S.Stover) 8

**ONE THING RIGHT** Songs Of Kobalt Music Publishing America, Inc., BMI/Marshmellow Music, BMI/Songs Of Universal, Inc., BMI/Kane Brown Music, BMI/Warner-Tamerlane Publishing Corp., BMI/Songs For Owen Music, SESAC/Universal Tunes, SESAC/Smackworks Music, SESAC/Kobalt Group Music Publishing, SESAC (Marshmello, K.Brown, J.Frasure, M.McGinn) 4

## P

**PRAYED FOR YOU** Pedal Down Music, ASCAP/Big Spaces Music, BMI/Tunes Of Big Deal Music, SESAC/Songs Of Porterfield Music, SESAC/Sony/ATV Countryside, BMI/Sony/ATV Accent, ASCAP (M.Stell, A.Bowers, A.Cruz) 12

## R

**REARVIEW TOWN** Songs Of Peer Ltd., ASCAP/Team Thrash, ASCAP/Songs Of Peer, BMI/New Writers Of Sea Gayle Music, BMI/Not A Track Guy Music, BMI/New House Of Sea Gayle Music, ASCAP/WB Music Corp., ASCAP/Own My Own Music Publishing, ASCAP (N.Thresher, B.Pinson, K.Lovelace) 10

**REDNECKER** Buzz Light Beer Music, ASCAP/Downtown DJ Songs, ASCAP/Relative Music Group, BMI/WB Music Corp., ASCAP/Freshy Music, ASCAP/We-Volve Music, ASCAP (A.Aibert, M.W.Hardy, J.M.Schmidt) 27

**REMEMBER YOU YOUNG** EMI Blackwood Music Inc., BMI/Cricket On The Line, BMI/Warner-Tamerlane Publishing Corp., BMI/Telemetry Rhythm House Music, BMI/Songs Of Roc Nation Music, BMI/Combustion Engine Music, ASCAP/WB Music Corp., ASCAP/Round Hill Songs II, ASCAP/Caleb's College Fund, ASCAP (Thomas Rhett, J.Frasure, A.Gorley) 25

**RIDIN' ROADS** Magic Mustang Music Inc., BMI/Warner-Tamerlane Publishing Corp., BMI/Round Hill Songs II, ASCAP/Caleb's College Fund, ASCAP/Spirit Two Nashville, ASCAP/Miller Crow Music, ASCAP/Kyler's Kinda Night, ASCAP (D.Lynch, A.Gorley, Z.Crowell) 33

## S

**SLOW DANCE IN A PARKING LOT** Ole Red Cape Songs, ASCAP/Jordan Davis Music, ASCAP/Amylase Songs 'N Such, ASCAP/Matching Cowlicks Music, ASCAP/WB Music Corp., ASCAP (J.Davis, L.L.Fowler) 37

**SOMEONE I USED TO KNOW** Weimerhound Music, BMI/Dav For The Dead Publishing, SESAC/Reach Music Tunes, SESAC/Andrew Watt Music, BMI/Songs Of Kobalt Music Publishing America, Inc., BMI/Siva Moon Publishing, SESAC/W.B.M. Music Corp., SESAC/Simonetti Music Publishing, SESAC/Kobalt Group Music Publishing, SESAC/Songs Of Universal, Inc., BMI/Mendes Music, BMI (Z.A.Brown, A.Wotman, N.Moon, B.Simonetti, S.Mendes) 40

**SOON YOU'LL GET BETTER** Sony/ATV Tree Publishing, BMI/Taylor Swift Music, BMI/Sony/ATV Songs LLC, BMI/Ducky Donath Music, BMI (T.Swift, J.M.Antonoff) 32

**SOUTHBOUND** Carrie-Okie Music, BMI/Universal Music - Brentwood Benson Publishing, ASCAP/D Soul Music, ASCAP/Capitol CMG Genesis, ASCAP/Jack 10 Publishing, BMI/Songs Of The Corn, BMI/Warner-Tamerlane Publishing Corp., BMI (C.Underwood, D.A.Garcia, J.Miller) 13

## T

**THOUGHT ABOUT YOU** Warner-Tamerlane Publishing Corp., BMI/The Country And Western Music, BMI/Round Hill Works, BMI/Big Loud Proud Crowd, BMI/Big Loud Brad Music, BMI/Big Loud Brett Songs, BMI (L.T.Miller, B.Warren, B.D.Warren) 36

**TIP OF MY TONGUE** Sony/ATV Acuff Rose Music, BMI/Basura Music, BMI/EMI Blackwood Music Inc., BMI/Rezolant Music, BMI/Sony/ATV Songs LLC, BMI/Sony/ATV Music Publishing UK Ltd, PRS/Ed Sheeran Limited, PRS (K.Chesney, R.Copperman, E.C.Sheeran) 16

**TO A T** Universal Music Corp., ASCAP/Lake Allegan Pub Club, ASCAP/Red Like The Sunset Music, ASCAP/Spicer And Everything Nicer, ASCAP/Ole Red Cape Songs, ASCAP/Big Music Machine, BMI/Neer Veltz So Good Publishing, BMI (R.J.Hurd, N.Spicer, L.Velzt) 41

## W

**WE WERE** Sony/ATV Tree Publishing, BMI/Longer And Louder Music, BMI/Mammaw's Fried Okra Music, BMI/Little Louder Songs, BMI/Songs Of Kobalt Music Publishing America, Inc., BMI/Harolds Purple Heart Music, BMI (E.Church, J.Hyde, R.Tyndell) 21

**WHAT HAPPENS IN A SMALL TOWN** Warner-Tamerlane Publishing Corp., BMI/Indiana Angel Music, BMI/Ritten by Rhettro, BMI/Don't Be A Gypsy, BMI/Revelry Music, BMI/Badlandsmgmt, BMI/Songs Of Kobalt Music Publishing America, Inc., BMI (B.Gilbert, R.Akins, B.Berryhill, J.Dunne) 18

**WHAT IF I NEVER GET OVER YOU** Universal Music Corp., ASCAP/Happy Rock Publishing, ASCAP/Dalmatian Music, PRS/Universal-PolyGram Int. Tunes, Inc., SESAC/Songs Of Universal, Inc., BMI/hurd-jamz, BMI/Big Music Machine, BMI/Neer Veltz So Good Publishing, BMI (S.Ellis, J.Green, R.J.Hurd, L.Velzt) 23

**WHISKEY GLASSES** Warner-Tamerlane Publishing Corp., BMI/Mr. Buck Lucky, BMI/Bump Into Genius Music, BMI/Sony/ATV Allegro, ASCAP/Over-Thought Under-Appreciated Songs, ASCAP/Rezen Music, ASCAP/Moving Target In The Dark, ASCAP (B.Burgess, K.Kadish) 5

C  
O  
U  
N  
T  
R  
Y  
M  
U  
S  
I  
C  
H  
A  
R  
T  
S

REWINDING  
THE  
COUNTRY  
CHARTS

40 Years Ago

# Charley Pride's 'Jamaica' – Recorded In England – Hit No. 1 In America

In 1979, the Country Music Hall of Fame member earned his 22nd of 29 Hot Country Songs leaders

On Sept. 15, 1979, **Charley Pride's** "You're My Jamaica" rose 2-1 on the Hot Country Songs chart.

Penned by **Kent Robbins**, "Jamaica" stands as a rare country hit in that it was recorded outside of the United States, in London.

Born in Sledge, Miss., as one of 11 children, Pride was, by age 14, the proud owner of a Silvertone guitar purchased

from a Sears catalog. His first exposure to country music came as a child, when his father would tune the family's Philco radio to **WSM-AM** Nashville on Saturday nights to listen to the Grand Old Opry.

Pride's other passion was baseball. A pitcher and outfielder, he played professionally in the Negro Leagues and, in 1953, signed with the Boise, Idaho, farm club of the New York Yankees.

However, an injury thwarted his dream of playing in the major leagues.

Pride signed with RCA Records in 1966 and became the first African-American singer to break through in country. During his career, he has charted 29 Hot Country Songs No. 1s among 52 top 10s. Pride entered the Country Music Hall of Fame in 2000 and, in his 80s, still tours. —JIM ASKER



Pride onstage in the United Kingdom in 1978.

| This Week | Last Week | Weeks on Chart | TITLE—Artist<br><small>(Writer), Label &amp; Number (Dist. Label) (Publisher, Licensee)</small>                                       |
|-----------|-----------|----------------|---|
| ★         | 2         | 10             | <b>YOU'RE MY JAMAICA</b> —Charley Pride<br><small>(K. Robbins), RCA 11655 (Pi-Gem, BMI)</small>                                       |
| ★         | 4         | 10             | <b>JUST GOOD OL'BOYS</b> —<br>Moe Bandy & Joe Stampley<br><small>(A. Fleetwood), Columbia 3-11027<br/>(Brandwood/Mullet, BMI)</small> |
| ★         | 6         | 7              | <b>IT MUST BE LOVE</b> —Don Williams<br><small>(B. McMill), MCA 41069 (Hall-Clement, BMI)</small>                                     |
| ★         | 4         | 1              | <b>I MAY NEVER GET TO HEAVEN</b> —Conway Twitty<br><small>(B. Anderson, B. Killen), MCA 41059 (Tree, BMI)</small>                     |
| ★         | 8         | 7              | <b>FOOLS</b> —Jim Ed Brown & Helen Cornelius<br><small>(J. Duncan), RCA 11672 (Pi-Gem, BMI)</small>                                   |

DAVID REDFERN/REDFERNS