

ASAHI GROUP HOLDINGS

FACTBOOK

2019

(Updated on August 2, 2019)

The Asahi logo is rendered in a bold, blue, italicized serif font. The letters are closely spaced and have a slight shadow effect, giving it a three-dimensional appearance. The 'A' is particularly large and stylized, with a sharp peak. The 'i' at the end has a distinct dot and a tail that curves upwards.

Asahi Group Philosophy

Medium-Term Management Policy

Asahi Group Philosophy	2
Medium-Term Management Policy	3

Corporate Data

Company Overview	4
Stock Information	5
Main Associate Companies	6
Corporate Governance Structure	7
List of Group Production Facilities	8
Company History	9

Financial and Management Indices

Consolidated Financial Statements (J GAAP / IFRS)	11
---	----

Group Businesses

Asahi Group at a Glance	12
-------------------------------	----

Alcohol Beverages Business

Asahi Breweries, Ltd.	13
Beer-Type Beverages: Sales by Container Type and Market Channel	14
Sales Volume by Month in 2018	15
Sales Volume by Month in 2019	16
Domestic Alcohol Beverages Market Data	17
Liquor Tax	18

Soft Drinks Business

Asahi Soft Drinks Co., Ltd.	19
Sales by Asahi Soft Drinks	20
Domestic Soft Drinks Market Data	22

Food Business

Asahi Group Foods, Ltd.	23
Domestic Food Business Market Data	24

Overseas Business

Overview of Overseas Business	25
Global Beer Market	26
Europe Business (Italy, Netherlands, UK)	27
Europe Beer Market (Italy, Netherlands, UK)	28
Europe Business (Poland, Czech, Slovakia, Romania, Hungary)	29
Europe Beer Market (Poland, Czech, Slovakia, Romania, Hungary)	30
Oceania Non-Alcohol Beverages Business	31
Oceania Non-Alcohol Beverages Market	32
Oceania Alcohol Beverages Business	33
Oceania Alcohol Beverages Market	34
Southeast Asia Beverages Business (Malaysia) / China Business	35



Asahi Group Philosophy

Our Mission

**Deliver on our great taste promise
and bring more fun to life**

Our Vision

**Be a value creator globally and locally,
growing with high-value-added brands**

Our Values

**Challenge and innovation
Excellence in quality
Shared inspiration**

Our Principles

Building value together with all our stakeholders

Customers: Win customer satisfaction with products and services that exceed expectations

Employees: Foster a corporate culture that promotes individual and company growth

Society: Contribute to a sustainable society through our business

Partners: Build relationships that promote mutual growth

Shareholders: Increase our share value through sustainable profit growth and shareholder returns

Medium-Term Management Policy

Enhancing "Glocal Value Creation Management" based on Asahi Group Philosophy

◆ Strengthening earnings power by further enhancing added value and earnings structure reform

Enhancing high-added-value brands in Japan and overseas and achieving revenue growth through expanded cross-selling initiatives

Reforming the earnings structure through the introduction of zero-based budgeting and optimization of procurement systems

*Target impact of earnings structure reform including zero-based budgeting (total for 2019–2021): over ¥30.0 billion

Enhancing business management through ROIC and improving asset and capital efficiency through cash flow maximization

◆ Enhancing management resources aimed at expanding new foundations for growth

Reforming the corporate culture to realize disruptive innovation and investing in intangible assets (R&D, human resources, etc.)

Promoting bolt-on M&As complementing existing businesses and expanding alliance with competitors and companies in other industries

Implementing business structure reform by leveraging digital transformation and advancing our business model

◆ Reinforcing ESG initiatives supporting our sustainable value creation process

Formulating "Asahi Group Environmental Vision 2050" and improving our sustainable activities through value creation that leverages the Group's unique strengths

Promoting *glocal* talent management and diversity and developing a human rights management system

Enhancing risk management systems (Enterprise Risk Management) and reforming corporate governance systems supporting Group and global growth

Key Performance Indicator (KPI) Concept and Guidelines

	2017 Result	Guidelines for next 3 years out
Revenue	JPY 2,084.9 billion	Stable growth from existing businesses – Business restructuring + New M&As
Core Operating Profit	JPY 196.4 billion	CAGR : mid to high single digit
EPS (adjusted*)	262.2 yen	CAGR : mid to high single digit
ROE (adjusted*)	13.7%	Maintain 13% or above

*Core operating profit is the reference index for normalized business performance.

Core operating profit = Revenue - (COGS + general administrative cost)

*Adjusted figures are calculated after the deduction of one off special factors including business portfolio restructuring and foreign exchange impact

Financial and Cash Flow Strategy

Guidelines from 2019 onward

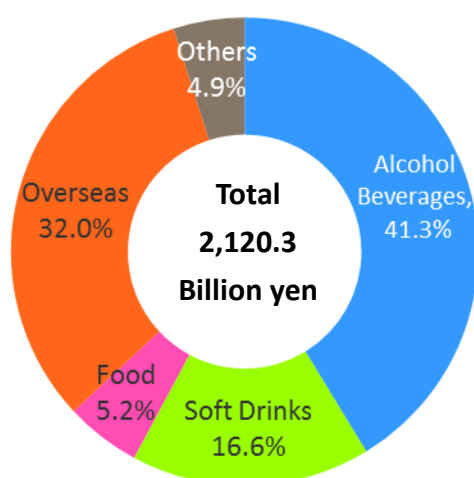
Cash Flow	FCF : above JPY170.0 billion (annual average)
Investment for Growth Debt Reduction	Prioritize M&As for expansion of foundations for growth and promote debt reduction for enhancing investment capacity Net debt / EBITDA : below 2 times by the end of FY2021
Shareholder Returns	Stable dividend increases with the aim of a dividend payout ratio of 35% * (-2021) Note: aiming at dividend payout ratio of 40% in the future

*Adjusted profit attributable to owners of parent is used for calculation

Corporate Profile (As of December 31, 2018)

Trade Name	: ASAHI GROUP HOLDINGS, LTD.
Head Office	: 1-23-1, Azumabashi Sumida-ku, Tokyo 130-8602, Japan
Date of Establishment	: September 1, 1949
President and Representative Director, CEO	: Akiyoshi Koji
Number of group companies	: A number of consolidated subsidiaries: 142 A number of companies subject to application of the equity method: 24
Issued Capital	: 182,531million yen
Revenue	: 2,120,291 million yen (Consolidated / FY2018)
Number of Employees	: 287 (Consolidated 28,055)
Security code	: 2502
Stock Exchange Listings	: Tokyo Stock Exchange
Number of Shares of Common Stock Issued	: 483,585,862
Unit amount of stocks	: 100 shares
Number of Shareholders	: 110,585
Transfer Agent and Registrar	: Sumitomo Mitsui Trust Bank, Limited
Stock Transfer Agent	
Fiscal Year-End Date	: December 31, on an annual basis
Annual General Meeting of Stockholders	: March

FY2018 Revenue by Business



Bond Issues

As of December 31, 2018

JPY denominated bond	Issued	Amount (Millions of yen)	Coupon rate	Date of maturity
4th Corporate deventure	Jul. 13, 2012	10,000	0.547%	Jul. 12, 2019
5th Corporate deventure	Jul. 15, 2014	25,000	0.229%	Jul. 12, 2019
6th Corporate deventure	Jul. 15, 2014	10,000	0.366%	Jul. 15, 2021
7th Corporate deventure	May 28, 2015	25,000	0.237%	May 28, 2020
8th Corporate deventure	May 28, 2015	10,000	0.348%	May 27, 2022
9th Corporate deventure	Jun. 13, 2017	100,000	0.080%	Jun. 12, 2020
10th Corporate deventure	Jun. 13, 2017	130,000	0.170%	Jun. 13, 2022
11th Corporate deventure	Jun. 13, 2017	20,000	0.230%	Jun. 13, 2024
12th Corporate deventure	Jun. 13, 2017	30,000	0.330%	Jun. 11, 2027

As of December 31, 2018

Euro denominated bond	Issued	Amount (Millions of Euro)	Coupon rate	Date of maturity
senior unsecured bonds due 2021	Sep. 19, 2017	600	0.321%	Sep. 19, 2021
senior unsecured bonds due 2025	Sep. 19, 2017	600	1.151%	Sep. 19, 2025

Bond Ratings

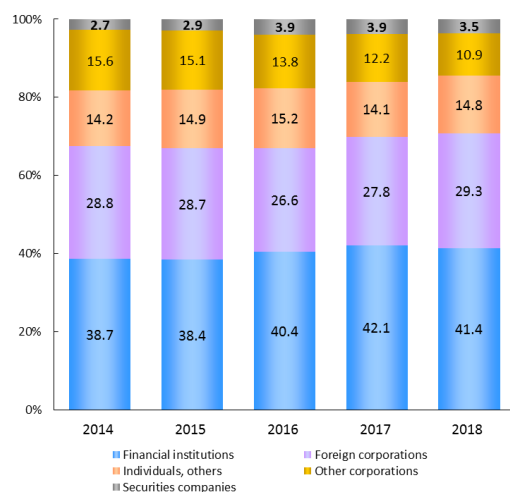
As of December 31, 2018

Rating Agency	Rating
Rating and Investment Information, Inc	A +
Japan Credit Rating Agency, Ltd.	AA -
Moody's	Baa1

Share Price Range

	2014	2015	2016	2017	2018
Share price (yen)					
Year High	3,871	4,380.5	3,912	5,810	6,053
Year Low	2,547	3,524	3,164	3,677	4,092
Number of issued share (100 shares)	4,835,858	4,835,858	4,835,858	4,835,858	4,835,858
Treasury shares (100 shares)	209,840	256,762	254,535	254,617	255,061
EPS (yen)	148.9	166.3	194.8	307.8	329.8
Dividends per share (yen)	45.0	50.0	54.0	75.0	99.0
Number of shareholders	108,522	106,712	115,017	98,099	110,585

Shareholder Composition



Note: Treasury shares is included in "Individuals, others."

Major Shareholders

(As of December 31, 2018)

Shareholder Name	Number of Shares (in hundreds)	Percentage of voting rights (%)
The Master Trust Bank of Japan, Ltd. (Trust Account)	453,422	9.9%
Japan Trustee Services Bank, Ltd. (Trust Account)	241,997	5.3%
The Dai-ichi Life Insurance Company, Limited	160,000	3.5%
Fukoku Mutual Life Insurance Company	127,500	2.8%
Asahi Kasei Corporation	117,853	2.6%
Sumitomo Mitsui Banking Corporation	90,280	2.0%
JAPAN TRUSTEE SERVICES BANK LTD. (Trust Account 5)	82,485	1.8%
Sumitomo Mitsui Trust Bank, Limited	71,260	1.6%
STATE STREET BANK WEST CLIENT - TREATY 505234	68,452	1.5%
JPMorgan Chase Bank 380055	65,409	1.4%
Total	1,478,659	32.3%

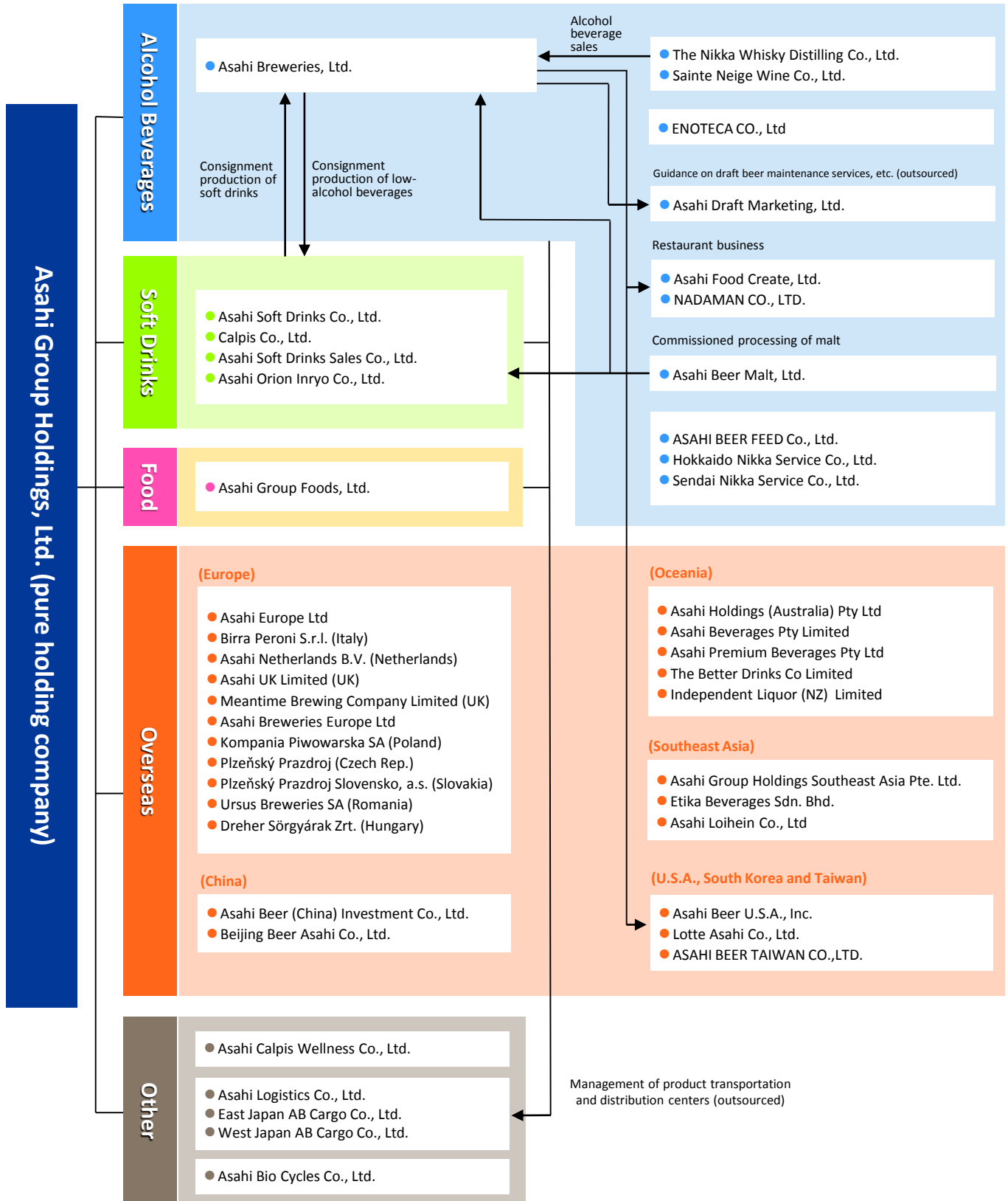
*Treasury share of 25,467,481 shares is excluded in preparing the list of major shareholders
Percentage of voting rights is calculated by deducing treasury shares from total issued shares

Share Price Chart



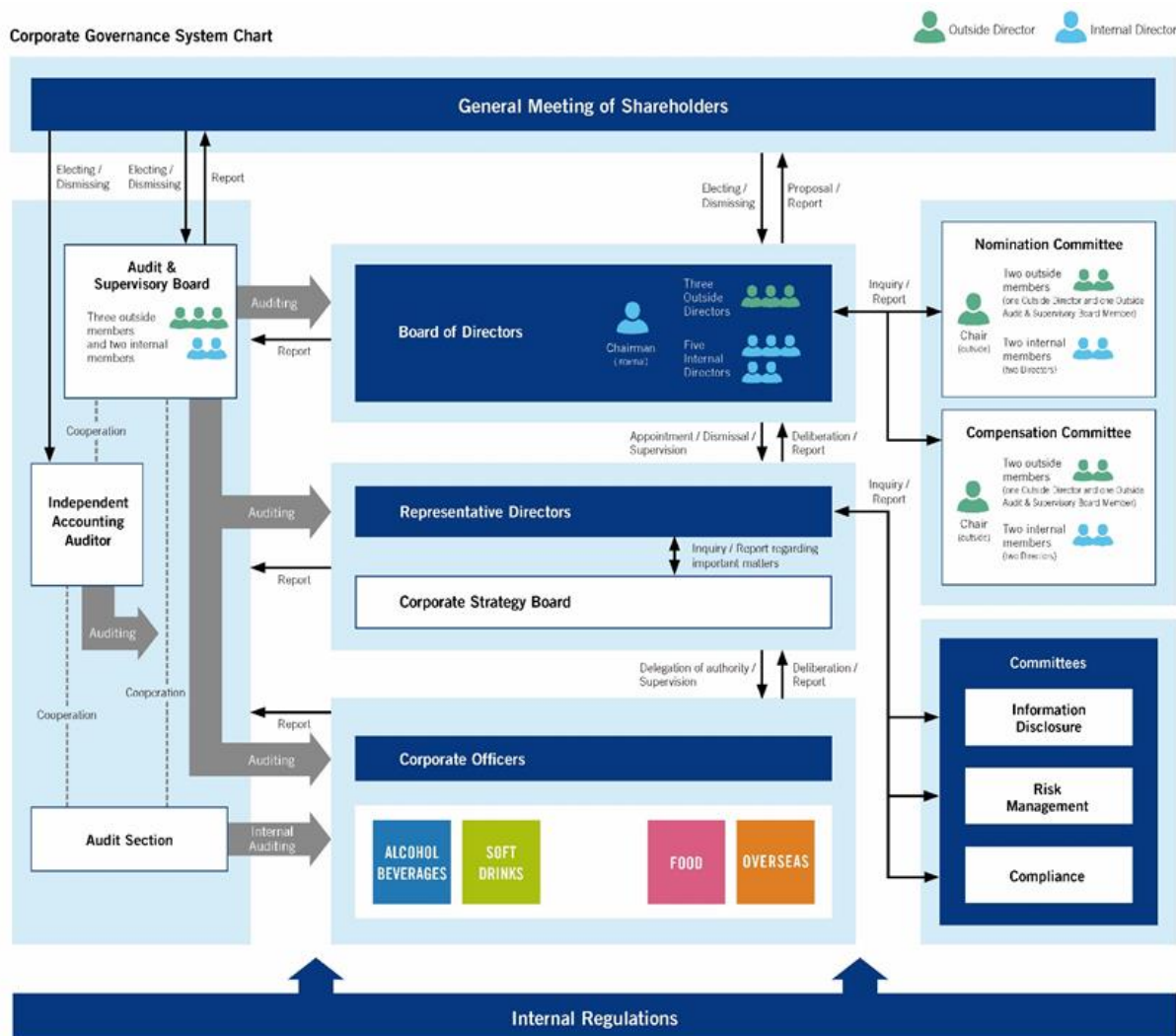
Source : Euroland

Schematic Diagram of the Asahi Group's Main Companies and Businesses (As of December 31, 2018)



Note: In addition to the above, Asahi Professional Management Co., Ltd. (a consolidated subsidiary) manages some of the key head office functions of Asahi Group companies in areas such as finance and IT as a holdings function company. It also handles indirect business services that are common to Group companies such as payroll, benefits and accounting, concentrating these services in one place and raising efficiency. Asahi Business Solutions Co., Ltd. (an equity method affiliate) undertakes IT related business on consignment for the entire Asahi Group. Asahi Beer Communications, Ltd. (an equity method affiliate) undertakes mainly the operations of factory tours in Asahi Breweries and Asahi Soft Drinks. Asahi Group Engineering Co., Ltd. (a consolidated subsidiary) designs and produces manufacturing equipment.

Corporate Governance System Chart (As of March 31, 2019)



Directors	9	Outside Directors: 3	Nomination Committee	5	Outside officers: 3
Audit & Supervisory Board Members	5	Outside Audit & Supervisory Board Members: 3	Compensation Committee	5	Outside officers: 3
Corporate Officers	19	Four double as directors			

Compensation for Directors and Audit & Supervisory Board Members (FY2018)

(Millions of yen)

	Basic Remuneration		Bonuses		Stock Compensation		Total
	Number of People	Total	Number of People	Total	Number of People	Total	
Directors	11	393	7	328	7	62	784
(of whom, Outside Directors)	(4)	(47)	(-)	(-)	(-)	(-)	(47)
Audit & Supervisory Board Members	5	109	-	-	-	-	109
(of whom, Outside Audit & Supervisory Board Members)	(3)	(38)	(-)	(-)	(-)	(-)	(38)

Note: The figures above include amounts paid to Director Mariko Bando, who retired upon the expiration of her term of office at the conclusion of the 94th Annual General Meeting of Shareholders held on March 27, 2018.

Number of Main Production Bases in Domestic Subsidiaries (As of December 31, 2018)

Factory name	Main Products and Operations	Location	Start of Operations
Asahi Breweries, Ltd. (8 breweries)			
1 Hokkaido Brewery	Beer, happoshu, liqueurs	Sapporo, Hokkaido Pref.	1966
2 Fukushima Brewery	Beer, happoshu, liqueurs, non-alcohol beer-taste beverages	Motomiya, Fukushima Pref.	1972
3 Ibaraki Brewery	Beer, happoshu, liqueurs, soft drinks	Moriya, Ibaraki Pref.	1991
4 Kanagawa Brewery	Beer, happoshu, liqueurs	Minami Ashigara, Kanagawa Pref.	2002
5 Nagoya Brewery	Beer, happoshu, liqueurs	Nagoya, Aichi Pref.	1973
6 Suita Brewery	Beer, happoshu, liqueurs, non-alcohol beer-taste beverages	Suita, Osaka Pref.	1891
7 Shikoku Brewery	Beer, happoshu, liqueurs	Saijo, Ehime Pref.	1998
8 Hakata Brewery	Beer, happoshu, liqueurs	Fukuoka, Fukuoka Pref.	1921
The Nikka Whisky Distilling Co., Ltd. (4 Distilleries and 4 Plants)			
9 Yoichi Distillery	Malt whiskey	Yoichi, Hokkaido Pref.	1934
10 Hirosaki Plant	Cider, Brandy, Apple wine, syrup	Hirosaki, Aomori Pref.	1960
11 Miyagikyo Distillery	Malt whiskey, Coffey grain whiskey	Sendai, Miyagi Pref.	1969
12 Tochigi Plant	Aging and blending of whiskey	Sakura, Tochigi Pref.	1977
13 Kashiwa Plant	Filling of whiskey and shochu bottles, RTD low-alcohol beverages	Kashiwa, Chiba Pref.	1967
14 Nishinomiya Plant	Filling of kegged shochu cacktails products	Nishinomiya, Hyogo Pref.	1959
15 Moji Distillery	Shochu, Filling of undistilled shochu and whisky, 'umeshu' plum liqueur	Kitakyushu, Fukuoka Pref.	1914
16 Satsuma Tsukasa Distillery	Singly distilled shochu	Aira, Kagoshima Pref.	-
Sainte Neige Wine Co., Ltd. (1 winery)			
17 Sainte Neige Winery	Wine, organic wine	Yamanashi, Yamanashi Pref.	-
Asahi Soft Drinks Co., Ltd. (7 factories)			
18 Fujisan Factory	Tea, mineral water	Fujinomiya, Shizuoka Pref.	2001
19 Hokuriku Factory	WONDA, etc.	Shimoniikawa, Toyama Pref.	1994
20 Akashi Factory	MITSUYA CIDER, WONDA, tea, RTD low-alcohol beverages, etc.	Akashi, Hyogo Pref.	1990
21 Rokko Factory	Mineral water	Kobe, Hyogo Pref.	2004
22 Fujiyoshida Factory	Mineral water	Fujiyoshida, Yamanashi Pref.	1990
23 Okayama Factory	CALPIS, CALPIS WATER, MITSUYA CIDER, etc.	Soja, Okayama Pref.	1968
24 Gunma Factory	CALPIS, CALPIS WATER, butter, etc.	Tatebayashi, Gunma Pref.	1972
Asahi Group Foods, Ltd. (7 factories)			
25 Ibaraki Factory	Dietary supplements, etc.	Hitachiomiya, Ibaraki Pref.	-
26 Osaka Factory	EBIOS, etc.	Suita, Osaka Pref.	-
27 Tochigi Koganei Factory	Yeast extract, etc.	Shimotsuke, Tochigi Pref.	-
28 Tochigi Sakura Factory	Infant formula, baby food, foods for vending machine, etc.	Sakura, Tochigi Pref.	-
29 Okayama Factory	Freeze-dried foods, granulated seasonings, etc.	Asakuchi, Okayama Pref.	-
30 Wako Food Industry Co., Ltd.	Industrial-use powdered milk, etc.	Nagano, Nagano Pref.	-
31 Nippon Freeze Drying Co., Ltd.	Freeze-dried foods	Azumino, Nagano Pref.	-
Asahi Beer Malt, Ltd. (2 factories)			
32 Yasu Factory	Malt, powdered malt, barley tea, etc.	Yasu, Shiga Pref.	-
33 Koganei Factory	Same as above	Shimotsuke, Tochigi Pref.	-

Number of Main Production Bases in Overseas Subsidiaries (As of December 31, 2018)

Area/business	Factories	Number
Europe		
Western Europe beer business	Italy : 3, Netherlands : 1, UK : 1	5
Central & Eastern beer business	Poland : 3, Czech : 3, Slovakia : 1, Romania : 3, Hungary : 1	11
Oceania		
Non-Alcohol Beverages business	Australia : 7, New Zealand : 1	8
Alcohol Beverages business	Australia : 1, New Zealand : 1	2
Southeast Asia		
Etika (Soft Drinks)	Malaysia : 3, Indonesia : 1, Vietnam : 1	5
Asahi Loi Hein (Soft Drinks)	Myanmar : 1	1
China		
Alcohol Beverages business	China : 1	1
Others		
Calpis (Soft Drinks)	Indonesia : 1, Thailand : 1	2
Asahi Calpis Wellness (Feed)	USA : 1	1

■ M&A, Equity Participation, Business Alliance etc. ■ New product launch

Year	Month	Main Events
1889	Nov.	Osaka Breweries, Ltd., the predecessor of Asahi Breweries, Ltd., is established. Japan Beer Brewery, Ltd. and Sapporo Beer Co. are also established around this time.
1891	Oct.	The Suita-mura Brewery, now Asahi Breweries' Suita Brewery, is completed.
1892	May	<i>Asahi Beer</i> is launched.
1897	July	The first Asahi House beer hall opens for business.
1900		<i>Asahi Beer</i> wins the title of best beer at the Paris Expo.
1906	Mar.	Dai Nippon Breweries, Co., Ltd. is jointly established by Osaka Breweries, Japan Beer Brewery, and Sapporo Beer Co.
1930	May	<i>EBIOS</i> , a pure brewer's yeast tablet, is introduced.
1944		Dai Nippon Breweries spins off its pharmaceutical division to form Dainippon Vitamin Co., Ltd. (now Asahi Food & Healthcare Co., Ltd.).
1949	Sep.	Asahi Breweries, Ltd. is established, and Tamesaburo Yamamoto is appointed the company's first president. Dai Nippon Breweries Co., Ltd. is divided into Asahi Breweries, Ltd. and Nippon Breweries, Ltd. upon enactment of the Economic Decentralization Act.
1954	Aug.	Asahi invests in Nikka Whisky Distilling Co., Ltd.
1972	Mar.	Mitsuya Vending (now Asahi Soft Drinks Co., Ltd.) is established.
1980	Nov.	Asahi acquires the trademark right to the <i>Bireley's</i> brand.
1982	Nov.	Asahi signs a collaborative business agreement with Löwenbräu AG of Germany.
1983	Jan.	Asahi acquires the trademark right to the Wilkinson carbonated drink.
1985	Oct.	Asahi announces the introduction of its corporate identity (CI) program.
1986	Feb.	<i>New Asahi Draft Beer</i> , distinguished by its rich and crisp taste, is launched.
	Mar.	Tsutomu Murai becomes chairman, and Hirotarō Higuchi takes office as president.
1987	Mar.	<i>Asahi Super Dry</i> , Japan's first dry draft beer, is launched. It is a megahit product that revolutionizes the beer industry.
1988	July	Asahi Beer Winery (now Sainte Neige Wine Co., Ltd.) is established.
	Oct.	Asahi Beer Soft Drink Manufacturing Co., Ltd. (now Asahi Soft Drinks Co., Ltd.) is established.
1989	Jan.	The company is renamed Asahi Breweries, Ltd.
1990	Sep.	Asahi Beer Soft Drinks Co., Ltd. (now Asahi Soft Drinks Co., Ltd.) is established.
1992	Mar.	Asahi Beer Food, Ltd. (now Asahi Food & Healthcare Co., Ltd.) is established.
	Sep.	Hirotarō Higuchi becomes chairman, and Yuzo Seto takes office as president.
1993	Mar.	The pioneering blend tea <i>Asahi Ocha Dozo Jurokucha</i> is launched.
1994	Jan.	Asahi acquires stakes in three Chinese beer companies and signs technical and licensing agreements with each of them. This marks its full-scale entry into the Chinese market.
	Mar.	Asahi Beer Pharmaceutical Co., Ltd. (now Asahi Food & Healthcare Co., Ltd.) is established.
1995	Dec.	Asahi and Itochu Corporation jointly acquire the management rights for Beijing Beer Asahi Co., Ltd. and Yantai Beer Asahi Co. Ltd.
1996	Apr.	The Asahi Beer Oyamazaki Villa Museum of Art is opened.
	July	Asahi Soft Drinks Co., Ltd. commences operations as a manufacturer and distributor of soft drinks.
1997	Sep.	<i>WONDA</i> , a new-generation canned coffee, is launched.
	Dec.	Asahi, in cooperation with China's Tsingtao Brewery Co., Ltd. and others, establishes Shenzhen Tsingtao Beer Asahi Co., Ltd. and starts work on brewery construction.
1998	Apr.	Asahi Beer U.S.A., Inc. is established.
	May	The Asahi Breweries, Ltd. Europe Branch is established.
	Dec.	Asahi claims the top market share in domestic beer sales.
1999	Jan.	Yuzo Seto becomes chairman, and Shigeo Fukuchi takes office as president.
	Aug.	Asahi Soft Drinks Co., Ltd. is listed on the Tokyo Stock Exchange, First Section.
	Sep.	The medium-term management plan "Asahi Innovation Program 2000" is announced.
2000	Feb.	Asahi introduces an executive director system.
2001	Feb.	With the launch of <i>Asahi Honnama</i> happoshu, Asahi enters the low-malt beer market.
	Apr.	The sales departments of Asahi and Nikka Whiskey Distilling Co., Ltd. are merged.
	Dec.	Asahi claims the top market share in domestic beer/happoshu sales.
2002	Jan.	Shigeo Fukuchi becomes chairman, and Kouichi Ikeda takes office as president.
	Feb.	In cooperation with Boon Rawd Brewery, Asahi starts local production of <i>Asahi Super Dry</i> in Thailand.
	July	Asahi Beer Food, Ltd. and Asahi Beer Pharmaceutical Co., Ltd. are merged to form Asahi Food & Healthcare Co., Ltd.
	Aug.	Asahi enters a comprehensive business alliance with Orion Beer Co., Ltd.
	Sep.	Asahi acquires the alcoholic beverage businesses of Kyowa Hakkō Kogyo Co., Ltd. and Asahi Kasei Corporation, and concludes a contract for a strategic marketing alliance with Maxxium Japan K.K.
	Oct.	<i>WONDA Morning Shot</i> canned coffee is launched.
	Dec.	Smile Support, Ltd. (now Asahi Field Marketing, Ltd.) is established.
2003	Jan.	Asahi Food & Healthcare Co., Ltd. acquires Pola Foods Inc.
2004	Feb.	Asahi Group's second medium-term management plan is announced.
	Apr.	Asahi establishes a joint venture in the beverage business with China's Tingyi (Cayman Islands) Holding Corp.
	May	The Beijing Beer Asahi Factory (known as the Green Beijing Factory) is completed, and <i>New Beijing Beer</i> is launched.
	July	Haitai Beverage Co., Ltd. becomes a consolidated subsidiary.
	Nov.	Asahi invests in the alcohol beverage sales company of South Korea's Lotte Group to establish Lotte Asahi Liquor Co., Ltd.
2005	Apr.	Asahi enters the new-genre beer market with its launch of <i>Asahi Shin-Nama</i> .
	May, June	Asahi acquires the stock of chilled beverage makers LB Co., Ltd. (Saitama) and LB Co., Ltd. (Nagoya) from Kanebo Cosmetics, Inc.
	Sep.	Sainte Neige Wine Co., Ltd. and Asahi Beer Winery are merged.

■ M&A, Equity Participation, Business Alliance etc. ■ New product launch

Year	Month	Main Events	
2006	Jan.	Nikka Whiskey Distilling Co., Ltd. and Asahi Kyowa Brewery Co., Ltd. are merged. Distribution subsidiaries are reorganized and business regions are merged. Asahi Logistics Co., Ltd. and two large-scale transportation companies are established.	
	Mar.	Kouichi Ikeda becomes chairman, and Hitoshi Ogita takes office as president.	
	May	Asahi acquires the stock of Wakodo Co., Ltd., Japan's largest baby-food maker.	
2007	Feb.	Asahi Group's third medium-term management plan is announced. A business and capital alliance is formed with Kagome Co., Ltd.	
	Mar.	Asahi Style Free happoshu is launched.	
	Apr.	Wakodo Co., Ltd. becomes a wholly owned subsidiary.	
	Dec.	Asahi Soft Drinks Co., Ltd. and Calpis Co., Ltd. establish joint venture Asahi Calpis Beverage Co., Ltd. to manage their vending machine operations.	
2008	Mar.	Clear Asahi, a new-genre beer (no-malt beer), is launched.	
	Apr.	Asahi Soft Drinks Co., Ltd. becomes a wholly owned subsidiary.	
	June	Asahi acquires the stock of Amano Jitsugyo Co., Ltd., Japan's largest maker of freeze-dried foods.	
2009	Feb.	Asahi Off, a new-genre beer, is launched.	
	Apr.	Asahi acquires a 19.99% stake in Tsingtao Brewery Co., Ltd. Asahi purchases Schweppes Australia Pty Limited from the United Kingdom's Cadbury Group.	
	Dec.	Asahi's Long-Term Vision 2015 and Medium-Term Management Plan 2012 are announced.	
2010	Mar.	Hitoshi Ogita becomes chairman, and Naoki Izumiya takes office as president. Asahi drafts its "Environmental Vision 2020" and "Biodiversity Declaration." Asahi begins full-scale development of Asahi Super Dry "Extra cold."	
	Apr.	Asahi concludes an agreement to purchase the mineral water business of House Foods Corporation.	
	Aug.	Asahi concludes an agreement to purchase shares of P&N Beverages Australia Pty Limited.	
	Nov.	Asahi acquires a 6.54% stake in Ting Hsin Group, one of China's largest packaged food and distribution groups.	
	Dec.	Asahi concludes an agreement to acquire the Rokujo Mugicha brand from Kagome Co., Ltd.	
	2011	Jan.	Asahi concludes an agreement to sell its stake in Haitai Beverage Co., Ltd.
		June	Asahi becomes a pure holding company and changes its name from Asahi Breweries, Ltd. to Asahi Group Holdings, Ltd.
Aug.		Asahi concludes an agreement to sell its stakes in Hangzhou Xihu Beer Asahi Co., Ltd. and Zhejiang Xihu Beer Asahi Co., Ltd.	
Sep.		Asahi acquires all stock in Flavoured Beverages Group Holdings Limited, a major New Zealand alcohol beverage company.	
Sep.		Asahi acquires all stock in Charlie's Group Limited, a New Zealand beverage company.	
Sep.		Asahi acquires the mineral water and fruit juice businesses of P&N Beverages Australia.	
Nov.		Asahi acquires all stock in Permanis Sdn. Bhd., a Malaysian beverage company.	
2012	Jan.	Asahi acquires all stock in Mountain H2O Pty Ltd, an Australian beverage company.	
	Feb.	Asahi Dry Zero, a new beer-taste non-alcohol beverage, is launched.	
	July	Asahi and PT Indofood CBP Sukses Makmur Tbk establish two joint ventures to manufacture and distribute soft drinks in Indonesia.	
	Oct.	Asahi acquires all stock in Calpis Co., Ltd., Japan's largest maker of fermented lactic beverages.	
2013	Feb.	Asahi's Long-Term Vision 2020 and Medium-Term Management Plan 2015 are announced.	
	Mar.	Clear Asahi Prime Rich, a new-genre beer, is launched.	
	June	Asahi concludes a contract with Osotspa Co., Ltd. to establish a joint venture to manufacture and distribute Calpis brand beverages in Thailand. A limited gift assortment of Asahi Super Dry—Dry Premium is launched.	
	Sep.	Asahi acquires all stock in PT Pepsi-Cola Indobeverages, a bottler for the PepsiCo Group in Indonesia.	
	2014	Feb.	Full-scale development of Asahi Super Dry—Dry Premium begins.
2014	Apr.	Asahi concludes an agreement to purchase the Southeast Asian dairy product business of Etika International Holdings Limited.	
2015	Mar.	Asahi acquires all stock in Enoteca Co., Ltd., retailer and importer of wine in Japan.	
	July	Asahi formulates Corporate Governance Guidelines.	
2016	Jan.	Asahi consolidates the non-refrigerated beverage business into Asahi Soft Drinks. Asahi Calpis Wellness Co., Ltd. succeeds the functional foods business (mail-order business, functional raw material) and animal feed business of the Calpis Co., Ltd. Asahi consolidates the food businesses (Asahi Food & Healthcare, Wakodo, Amano Jitsugyo) into newly established Asahi Group Foods, Ltd.	
	Feb.	Asahi's Long-Term Vision and Medium-Term Management Policy are announced.	
	Mar.	Naoki Izumiya becomes chairman, and Akiyoshi Koji takes office as president. Asahi introduces a new Performance-Linked Stock Compensation Plan for the Directors of the Company.	
	Oct.	Asahi acquires the Peroni, Grolsch, Meantime and related business of SABMiller from AB InBev.	
2017	Mar.	Asahi acquires the businesses in Central and Eastern Europe and related assets of SABMiller from AB InBev.	
	Jun.	Asahi concludes an agreement to sell its all stock in Tingyi-Asahi Beverages Holdings Co., Ltd.	
	Nov.	Asahi concludes an agreement to sell its all stock in LB Co., Ltd.	
	Dec.	Asahi concludes an agreement to sell its all stock in Tsingtao Brewery Co., Ltd. Asahi concludes an agreement to sell its all stock in PT Asahi Indofood Beverage Makmur and PT Indofood Asahi Sukses Beverage, the Indonesia's joint venture business	
	2018	Mar.	Akiyoshi Koji takes office as president and CEO, and Naoki Izumiya dedicates to chairman.
2019	Jan.	Asahi Group Philosophy is newly introduced.	
	Feb.	Medium-Term Management Policy is revised. Asahi Group Environmental Vision 2050 is announced.	
	Apr.	Asahi acquires the beer and cider business and other related assets of Fuller, Smith & Turner P.L.C.	

J GAAP	2012	2013	2014	2015
Consolidated Statements of Income (Millions of Yen)				
Net sales	1,579,077	1,714,237	1,785,478	1,857,418
Cost of sales	974,702	1,032,853	1,073,439	1,100,519
(Liquor tax)	(421,953)	(423,332)	(426,453)	(422,941)
Gross profit	604,375	681,383	712,039	756,899
Selling, general and administrative expenses	495,937	563,916	583,733	621,779
(Goodwill amortization)	(13,991)	(18,449)	(19,474)	(16,271)
Operating income	108,437	117,467	128,305	135,119
Financial income	-2,304	-1,605	-1,392	-919
Interest income	402	387	453	583
Dividend income	1,335	1,602	1,840	2,112
Interest expenses	-4,043	-3,595	-3,686	-3,615
Equity in income of affiliates	10,617	8,822	8,025	14,167
Ordinary income	114,822	123,612	133,168	145,946
Profit attributable to owners of the parent	57,183	61,749	69,118	76,427
EBITDA *1	170,982	183,696	192,308	197,994

Capital expenditures / Depreciation (Millions of Yen)				
Capital expenditures	41,197	48,488	59,828	52,099
Depreciation	48,553	47,780	44,528	46,603

Consolidated Balance Sheets (Millions of Yen)				
Total assets	1,732,188	1,791,556	1,936,610	1,901,554
Current assets	529,189	534,890	603,842	600,498
Receivables	317,008	317,106	353,704	362,241
Inventories	-	-	-	-
Merchandise and finished goods, Raw materials and supplies	113,519	118,302	124,549	132,315
Noncurrent assets	1,202,998	1,256,665	1,332,767	1,301,056
Tangible fixed assets	583,399	584,219	605,415	582,098
Current liabilities	680,068	666,081	757,374	715,193
Noncurrent liabilities	325,240	297,993	282,725	294,531
Financial obligation	456,234	403,723	434,726	414,930
Net assets	726,879	827,481	896,510	891,829
Equity	723,819	819,295	881,091	877,672

Consolidated Statements of Cash Flows (Millions of Yen)				
Net cash provided by operating activities	109,292	157,252	146,783	112,765
Net cash used in investing activities	-134,320	-65,705	-92,183	-75,583
Net cash provided by (used in) financing activities	43,002	-84,938	-35,842	-73,044
Cash and cash equivalents	34,320	41,117	62,235	43,290
Free cash flow *2	68,952	108,292	82,747	61,257

*1: EBITDA=Operating income (before goodwill) + Depreciation and amortization *2: Free cash flow = Operating cash flows ± Acquisition of tangible and intangible fixed assets

IFRS	2016	2017	2018
Consolidated Statement of Profit or Loss (Millions of Yen)			
Revenue	1,706,901	2,084,877	2,120,291
Cost of sales	1,098,173	1,295,399	1,303,246
(Liquor tax)	(422,941)	(495,494)	(493,766)
Gross profit	608,728	789,477	817,044
Selling, general and administrative expenses	460,241	593,108	595,661
Amortization of acquisition-related intangible assets	(6,249)	(19,199)	(22,018)
Core operating profit	148,487	196,369	221,384
Operating profit	136,890	183,192	211,772
Finance income	3,106	5,206	8,282
Finance costs	-4,066	-10,368	-12,731
Share of profit (loss) of entities accounted for using equity method	1,974	1,055	887
Profit before tax	150,068	196,984	207,308
Profit	87,115	138,848	150,938
Profit attributable to owners of parent	89,221	141,003	151,077
EBITDA *1	205,803	285,394	318,463

Capital expenditures / Depreciation (Millions of Yen)			
Capital expenditures	63,471	89,563	78,243
Depreciation	51,067	69,827	75,062

Consolidated Statement of Financial Position (Millions of Yen)			
Total assets	2,094,332	3,346,822	3,079,315
Current assets	635,026	812,426	714,576
Trade and other receivables	397,340	433,436	427,279
Inventories	136,460	155,938	160,319
Non-current assets	1,459,305	2,534,396	2,364,738
Goodwill and intangible assets	499,489	1,538,679	1,428,543
Current liabilities	819,556	1,052,157	939,591
Bonds and borrowings	281,870	359,722	262,620
Non-current liabilities	428,670	1,141,917	990,076
Bonds and borrowings	288,490	902,203	764,768
Total equity	846,105	1,152,748	1,149,647
Total equity attributable to owners of parent	836,354	1,145,135	1,146,420

Consolidated Statement of Cash Flows (Millions of Yen)			
Cash flows from (used in) operating activities	154,452	231,712	252,441
Cash flows from (used in) investing activities	-268,507	-885,823	22,505
Cash flows from (used in) financing activities	119,554	661,882	-270,564
Cash and cash equivalents at the end of period	48,459	58,054	57,317
Free cash flow *2	96,304	143,830	164,553

Management Index				
ROE	8.4%	8.0%	8.1%	8.8%
ROA	7.0%	7.0%	7.1%	7.6%
EPS (yen)	122.8	135.7	148.9	166.3
BPS (yen)	1,553.4	1,772.5	1,904.6	1,916.7

Investment Index				
Dividend payout ratio	22.8%	31.7%	30.2%	30.1%

Profitability Index				
Gross profit margin	38.3%	39.7%	39.9%	40.8%
Operating margin	6.9%	6.9%	7.2%	7.3%
(Operating margin excluding liquor tax)	(9.4%)	(9.1%)	(9.4%)	(9.4%)
Ordinary income margin	7.3%	7.2%	7.5%	7.9%
Profit attributable to owners of the parent margin	3.6%	3.6%	3.9%	4.1%
EBITDA ratio	10.8%	10.7%	10.8%	10.7%

Efficiency Index (Times)				
Total asset turnover	0.97	0.97	0.96	0.97
Equity turnover	2.3	2.2	2.1	2.1
Fixed assets turnover	2.8	2.9	3.0	3.1
Inventory turnover	14.6	14.8	14.7	14.5
Receivables turnover	5.3	5.4	5.3	5.2

Safety Index				
Shareholders' equity ratio	41.8%	45.7%	45.5%	46.2%
Debt ratio	138.9%	117.7%	118.0%	115.0%
Liquidity ratio	77.8%	80.3%	79.7%	84.0%
Fixed assets ratio	166.2%	153.4%	151.3%	148.2%
Fixed assets/Liability ratio	114.7%	112.5%	114.5%	111.0%
Interest coverage ratio	25.6	40.9	39.9	30.9
Debt-to-equity ratio	0.63	0.49	0.49	0.47

Management Index *				
ROE	11.0%	13.7%		15.2%
ROA	7.7%	7.2%		6.5%
EPS (yen)	194.8	262.2		329.0
BPS (yen)	1,825.6	2,499.6		2,502.7

Investment Index *				
Dividend payout ratio	27.7%	28.6%		30.1%

Profitability Index *				
Gross profit margin	35.7%	37.9%		38.5%
Core operating margin	8.7%	9.4%		10.4%
(Core operating margin excluding liquor tax)	(11.6%)	(12.4%)		(13.6%)
Operating margin	8.0%	8.8%		10.0%
Profit attributable to owners of parent margin	5.2%	6.8%		7.1%
EBITDA ratio	12.1%	13.7%		15.0%

Efficiency Index (Times) *				
Total asset turnover	0.88	0.77		0.66
Equity attributable to owners of parent turnover	2.1	2.1		1.9
Fixed assets turnover	3.1	3.2		3.0
Inventory turnover	12.8	14.3		13.4
Trade receivables turnover	4.5	5.0		4.9

Safety Index *				
Equity ratio attributable to owners of parent	39.9%	34.2%		37.2%
Debt ratio	149.2%	191.6%		168.3%
Liquidity ratio	77.5%	77.2%		76.1%
Non-current assets ratio	174.5%	221.3%		206.3%
Non-current assets / liability ratio	115.4%	110.8%		110.7%
Interest coverage ratio	42.2	41.4		37.0
Net Debt-to-equity ratio	0.62	1.05		0.85

* Calculations are based on the figures after the deduction of one off special factors including business portfolio restructuring and foreign exchange impact

Results of Main Businesses

◆ Revenue and Core Operating Profit by Business (Before IFRS adjustment) (Billions of yen)

	2018 Results			2019 Targets (announced on Aug. 1)		
	Revenue	Core OP	Amortization of intangible assets	Revenue	Core OP	Amortization of intangible assets
Alcohol Beverages Business						
Asahi Breweries	889.3	108.7	-0.2	877.6	108.7	-0.2
Soft Drinks Business						
Asahi Soft Drinks	370.8	37.3	-1.6	376.0	37.6	-1.6
Food Business						
Asahi Group Foods	116.0	12.0	-	118.0	12.3	-
Overseas Business						
Europe business	465.5	81.1	-17.7	477.7	85.2	-17.0
Oceania business	174.7	14.8	-2.3	175.0	15.7	-2.0
Southeast Asia business	45.9	2.2	-	42.5	2.4	-
China business	9.8	0.5	-	5.3	-0.6	-

◆ Foreign Exchange Rate

(yen)

	2017 Results (Average)	2018 Results (Average)	2019 Targets (announced on Aug. 1)
US Dollar	112.2	110.4	108.0
Euro (Western Europe)	126.7	130.4	123.0
Euro (Central Europe)	128.6		
Australian Dollar	86.0	82.6	77.0
Malaysian Ringgit	26.1	27.4	26.0
Chinese Yuan	16.6	16.7	15.8

◆ CAPEX / Depreciation (2018)

(Billions of yen)

Business	CAPEX	Depreciation
Alcohol Beverages	23.1	22.2
Soft Drinks	12.0	10.8
Food	3.1	3.5
Overseas	36.9	34.6
Others	0.6	0.5
Total	78.2	75.1

◆ Goodwill etc. by Business (As of December 31, 2018)

(Billions of yen)

	Capital	% of voting rights	Date of consolidation	Goodwill					Remarks
				Amount at the time of acquisition	Amortization term	Remaining years	Unamortized balance of goodwill		
Soft Drinks Business									
Asahi Soft Drinks	246.9	100.0%	-	Goodwill 25.9 Intangible assets 34.6	- 5-20	- -	23.0 23.1	Calpis Acquisition in Oct. 2012	
Food Business									
Asahi Group Foods	76.4	100.0%	-	23.6	-	-	4.5	Wakodo Acquisition : 22.7 billion yen in Apr. 2006 and 0.9 billion yen in Mar. 2007	
Overseas Business									
Asahi Europe Ltd (Europe business)	401.8	100.0%	Oct. 2016	Goodwill 123.0 Intangible assets 150.9	- 21-40	- -	135.3 156.0		
Asahi Breweries Europe Ltd (Europe business)	1,198.8		Mar. 2017	Goodwill 428.0 Intangible assets 475.5	- 40	- -	462.1 488.1	Amount in local currency Note: The price changes according to the exchange rate.	
Asahi Holdings (Australia) (Oceania business)	221.9 (*1)	100.0%	Apr. 2009	Goodwill 123.5 Intangible assets 25.2	- 10-20	- -	65.9 14.2		
Southeast Asia business	130.5	100.0%	Nov. 2011	Goodwill 37.4	-	-	1.2		

(*1) Total assets of Asahi Holdings (Australia) Pty Ltd (Asahi Holdings Australia)

(*2) Date of consolidation of other companies: Asahi Beverages Australia (Sep. 2011), Charlie's Group (Sep. 2011), Independent Liquor Group (Sep. 2011), Mountain H2O (Jan. 2012)

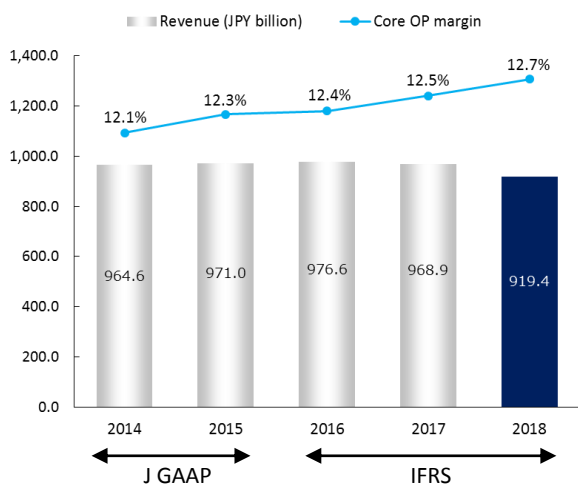
Asahi Breweries, Ltd.

Corporate Profile, based on 2018 results

Business field	Manufacture and sales of beer and other alcohol beverages, and related operations
Established	September 1949*
Issued capital	¥20.0 billion
Number of employees	5,960(consolidated) * With the establishment of a pure holding company in July 2011, Asahi Breweries was split off as a separate company.

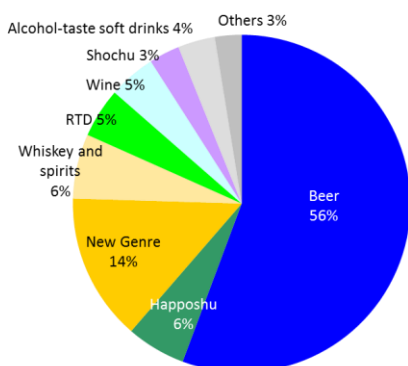
Alcohol Beverages Business

Revenue and Core OP Margin Trend



Sales Composition by Product Category (2018)

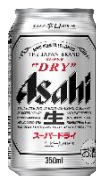
On a value basis



Main Brands

Note: Retail prices are discretionary.

Beer-type



Asahi Super Dry

A dry beer with a refined, clear taste. The texture is light, but it has a distinct edge. The sharp finish is emphasized in this standard-setting dry beer.



Asahi Style Free

A zero carb happoshu retains the rich flavor of malt with the fresh aftertaste. This is the happoshu for those who care carb and calories intake.



Clear Asahi

A New Genre retains clear taste and pure sharp finish with malt flavor. Appreciate the fresh aftertaste.



Asahi Gokujo Kireaji

A New Genre with the sharp finish and rich flavor derived from 100% barley.

Non-alcohol beer-taste beverage



Asahi Dry Zero

This non-alcohol beer-taste beverage has an enjoyably dry finish and creamy foam, aiming at real "beer taste". It contains not only zero alcohol but also zero calories (according to nutrition labeling standards) or zero saccharides.

Other Alcohol Beverages



Whisky and spirits



RTD



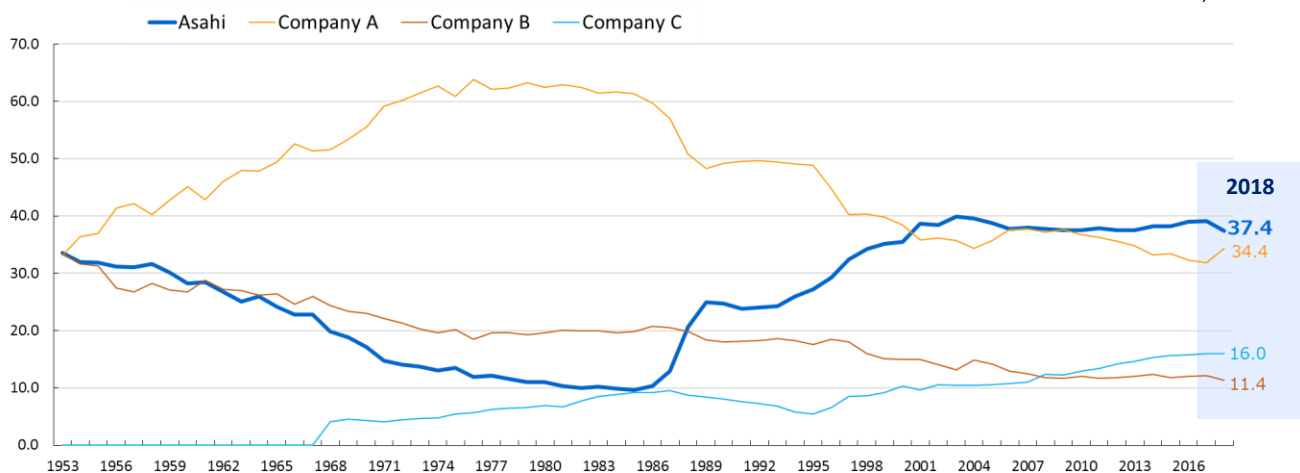
Wine



Shochu

Beer-Type Market Share in Japan based on Taxable Shipment Volume

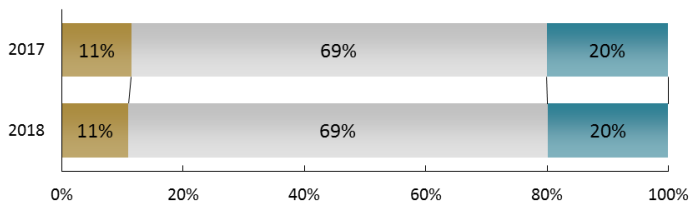
Source: Asahi Breweries, Ltd. estimate



Sales Composition by Container Type (2018)

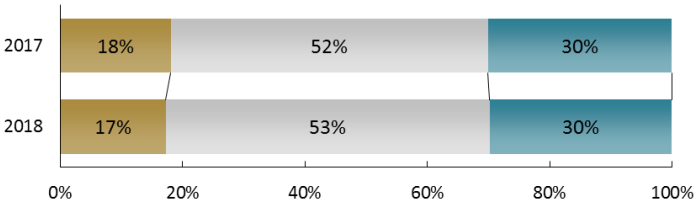
Beer-type Total

■ Bottle ■ Can ■ Keg



Beer

■ Bottle ■ Can ■ Keg



Year-on-year Sales by Container Type (2018)

Asahi Breweries

	Bottle	Can	Keg	Total
Total	89.0%	94.0%	92.7%	93.2%
Beer	89.2%	95.5%	92.7%	93.5%

Industry Overall

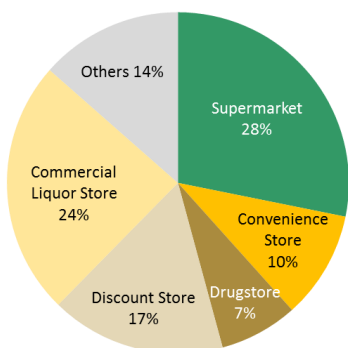
Sources: Brewers Association of Japan

	Bottle	Can	Keg	Total
Beer	89.9%	96.9%	94.1%	94.8%

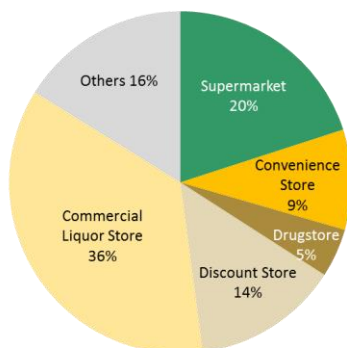
	Commercial-use	Home-use	Total
Beer	93.5%	95.9%	94.8%

Sales Composition by Marketing Channel (2018, Source: Asahi Breweries, Ltd.)

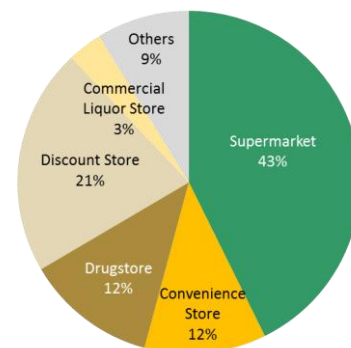
Beer-type Total



Beer



Happoshu, New genre



Taxable Shipment Volume of Beer-type Beverages by Top

Five Companies (2018)

Source: Brewers Association of Japan, Society to Consider the Happoshu Tax System.

(Millions of cases)

	1H			2H			Total		
		YoY	% of total		YoY	% of total		YoY	% of total
Beer	88.23	-6.3%	48.1%	105.68	-4.3%	50.2%	193.91	-5.2%	49.2%
Happoshu	24.15	-8.4%	13.2%	26.01	-9.1%	12.4%	50.16	-8.8%	12.7%
New Genre	70.99	+1.9%	38.7%	78.84	+5.4%	37.4%	149.84	+3.7%	38.0%
Total	183.38	-3.6%	-	210.53	-1.5%	-	393.91	-2.5%	-

Sales Volume of Non-Alcohol Beer-taste Beverages by Top Four Companies (2018)

(Millions of cases)

	Jan.	Feb.	Mar.	Apr.	May	June	July	Aug.	Sep.	Oct.	Nov.	Dec.	1H	2H	Total
No. of cases	0.75	1.23	1.45	1.63	1.60	1.92	2.27	1.99	1.60	1.44	1.39	1.84	8.58	10.53	19.11
YoY	-3.5%	+22.0%	+13.8%	-2.7%	-5.7%	+12.2%	+3.8%	-2.2%	-4.4%	+1.6%	+6.1%	-0.8%	+5.0%	+0.6%	+2.5%

Asahi Breweries Beer-type Beverage Sales by Month (2018)

Taxable shipment volume (Millions of cases)

	1H			2H			Total		
		YoY	Market share		YoY	Market share		YoY	Market share
Beer	42.96	-7.3%	48.7%	51.32	-3.9%	48.6%	94.28	-5.5%	48.6%
Happoshu	6.74	-7.0%	27.9%	6.97	-11.3%	26.8%	13.72	-9.2%	27.3%
New Genre	19.16	-11.1%	27.0%	20.27	-6.8%	25.7%	39.43	-8.9%	26.3%
Total	68.87	-8.4%	37.6%	78.56	-5.3%	37.3%	147.43	-6.8%	37.4%

Sales Volume YoY

	Jan.	Feb.	Mar.	Apr.	May	June	July	Aug.	Sep.	Oct.	Nov.	Dec.
Beer	-3.0%	+9.0%	-22.0%	-1.0%	-20.0%	+2.0%	-6.0%	-2.0%	-5.0%	-4.0%	+0.0%	-13.0%
Happoshu	-6.0%	-6.0%	+1.0%	-10.0%	-17.0%	+1.0%	-8.0%	-9.0%	-9.0%	-7.0%	-3.0%	-11.0%
New Genre	-5.0%	-14.0%	-4.0%	-9.0%	-23.0%	+8.0%	-7.0%	-8.0%	-1.0%	-3.0%	-5.0%	-14.0%
Total	-4.0%	+0.0%	-15.0%	-4.0%	-21.0%	+3.0%	-7.0%	-4.0%	-4.0%	-4.0%	-1.0%	-13.0%

Sales Volume by category (Millions of cases)

	1H		2H		Total	
	No. of cases	YoY	No. of cases	YoY	No. of cases	YoY
Beer	41.53	-7.1%	51.98	-6.0%	93.51	-6.5%
Happoshu	6.67	-6.5%	7.22	-8.2%	13.89	-7.4%
New Genre	19.16	-8.7%	20.59	-6.4%	39.75	-7.5%
Total	67.36	-7.5%	79.80	-6.3%	147.16	-6.8%

Sales volume by brand (Millions of cases)

	Jan.		Feb.		Mar.		Apr.		May		June	
	No. of cases	YoY	No. of cases	YoY	No. of cases	YoY	No. of cases	YoY	No. of cases	YoY	No. of cases	YoY
Super Dry total	4.26	-3.4%	6.40	+12.1%	6.18	-22.4%	7.46	-4.8%	6.94	-23.4%	8.82	+2.2%
Style Free total	0.70	-2.8%	0.91	-5.2%	1.12	+3.7%	1.03	-8.0%	1.09	-14.8%	1.18	+3.5%
Clear Asahi total	1.76	-4.9%	2.36	-14.8%	2.70	-10.3%	2.89	-10.5%	2.82	-24.4%	3.22	+9.9%

	July		Aug.		Sep.		Oct.		Nov.		Dec.	
	No. of cases	YoY	No. of cases	YoY	No. of cases	YoY	No. of cases	YoY	No. of cases	YoY	No. of cases	YoY
Super Dry total	9.63	-6.1%	8.98	-4.5%	6.68	-5.4%	6.61	-4.1%	7.69	-0.1%	11.19	-14.1%
Style Free total	1.11	-9.8%	1.10	-6.0%	1.06	-7.0%	1.03	-6.4%	1.03	-2.8%	1.21	-10.4%
Clear Asahi total	2.76	-7.7%	2.84	-8.4%	3.08	-0.3%	2.62	-3.3%	2.69	-6.6%	3.02	-15.2%

	Jan. - Mar.		Apr. - June		July - Sep.		Oct. - Dec.		1H		2H		Total	
	No. of cases	YoY	No. of cases	YoY	No. of cases	YoY	No. of cases	YoY	No. of cases	YoY	No. of cases	YoY	No. of cases	YoY
Super Dry total	16.84	-6.9%	23.22	-9.0%	25.29	-5.4%	25.49	-7.7%	40.06	-8.1%	50.78	-6.5%	90.86	-7.2%
Style Free total	2.73	-1.1%	3.30	-6.8%	3.27	-7.6%	3.27	-6.8%	6.03	-4.3%	6.54	-7.2%	12.57	-5.8%
Clear Asahi total	6.82	-10.6%	8.93	-9.7%	8.68	-5.4%	8.33	-9.0%	15.75	-10.1%	17.01	-7.2%	32.76	-8.6%

Asahi Breweries Non-Alcohol Beer-taste Beverage Sales by Month (2018)

(Millions of cases)

	Jan.	Feb.	Mar.	Apr.	May	June	July	Aug.	Sep.	Oct.	Nov.	Dec.	1H	2H	Total
No. of cases	0.37	0.43	0.60	0.67	0.69	0.87	0.97	0.92	0.71	0.65	0.59	0.83	3.63	4.67	8.30
YoY	+0.0%	-6.5%	+5.3%	+4.7%	-4.2%	+19.2%	+7.8%	+3.4%	-1.4%	+4.8%	+1.7%	+3.8%	+4.0%	+3.5%	+3.8%

Beer-type Sales Volume Trend in Asahi Breweries and Market

(Millions of cases)

			Jan.	Feb.	Mar.	Jan.-Mar.	Apr.	May	June	Apr.-June	H1	
Asahi	Beer	No. of cases	-	-	-	-	-	-	-	-	39.55	
		YoY	2%	-21%	11%	-4%	-4%	-8%	-4%	-5%	-4.8%	
	Happoshu	No. of cases	-	-	-	-	-	-	-	-	-	6.23
		YoY	-3%	-6%	-14%	-8%	0%	-8%	-7%	-5%	-6.6%	
	New Genre	No. of cases	-	-	-	-	-	-	-	-	-	19.49
		YoY	18%	2%	0%	5%	-4%	2%	-1%	-1%	1.7%	
Total	No. of cases	-	-	-	-	-	-	-	-	-	65.27	
	YoY	6%	-13%	5%	-2%	-4%	-5%	-4%	-4%	-4%	-3.1%	
Market Trend	Beer	YoY	1%	-14%	-5%	-7%	6%	-4%	-6%	-2%	-3~4%	
	Happoshu	YoY	0%	-9%	-15%	-9%	-3%	-8%	-10%	-7%	Around -8%	
	New Genre	YoY	17%	18%	1%	11%	8%	2%	-4%	2%	+5~6%	
	Total	YoY	7%	-2%	-4%	0%	5%	-2%	-6%	-1%	0~-1%	

			July	Aug.	Sep.	July-Sep.	Oct.	Nov.	Dec.	Oct.-Dec.	H2	Total
Asahi	Beer	No. of cases										
		YoY										
	Happoshu	No. of cases										
		YoY										
	New Genre	No. of cases										
		YoY										
Total	No. of cases											
	YoY											
Market Trend	Beer	YoY										
	Happoshu	YoY										
	New Genre	YoY										
	Total	YoY										

Asahi Breweries Sales Volume Trend by Brand

			Jan.	Feb.	Mar.	Jan.-Mar.	Apr.	May	June	Apr.-June	H1
Asahi Super Dry total	No. of cases		4.40	5.10	6.81	16.27	7.48	6.67	8.25	22.40	38.67
	YoY		3.3%	-20.3%	10.2%	-3.4%	0.3%	-3.9%	-6.5%	-99.0%	-3.5%
Style Free total	No. of cases		0.69	0.87	0.97	2.53	1.04	1.01	1.12	3.17	5.70
	YoY		-1.4%	-4.4%	-13.4%	-7.3%	1.0%	-7.3%	-5.1%	-99.0%	-5.5%
Clear Asahi total	No. of cases		1.52	2.07	2.44	6.03	2.37	2.50	2.66	7.53	13.57
	YoY		-13.6%	-12.3%	-9.6%	-11.6%	-18.0%	-11.3%	-17.4%	-99.2%	-13.8%

			July	Aug.	Sep.	July-Sep.	Oct.	Nov.	Dec.	Oct.-Dec.	H2	Total
Asahi Super Dry total	No. of cases											
	YoY											
Style Free total	No. of cases											
	YoY											
Clear Asahi total	No. of cases											
	YoY											

Asahi Breweries Non-Alcohol Beer-Taste Beverage Sales Volume Trend

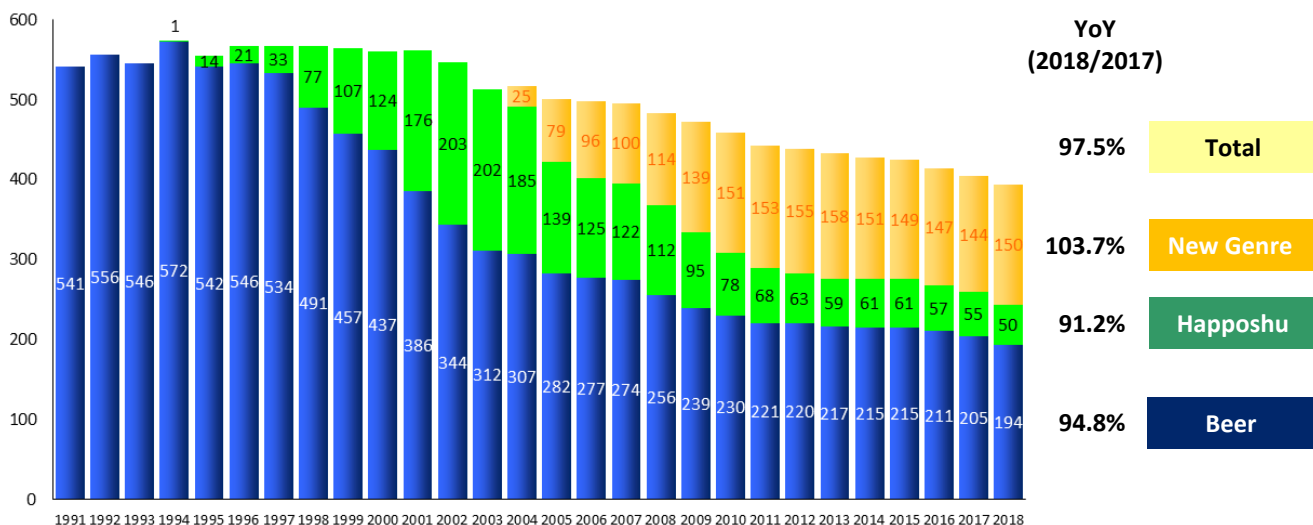
			Jan.	Feb.	Mar.	Jan.-Mar.	Apr.	May	June	Apr.-June	H1
Asahi	No. of cases		0.40	0.50	0.61	1.51	0.72	0.71	0.75	2.18	3.69
	YoY		8.1%	16.3%	1.7%	7.9%	7.5%	2.9%	-13.8%	-2.2%	1.7%
Market Trend	YoY		17%	-13%	-3%	-2%	3%	-1%	-16%	-5%	Around -4%

			July	Aug.	Sep.	July-Sep.	Oct.	Nov.	Dec.	Oct.-Dec.	H2	Total
Asahi	No. of cases											
	YoY											
Market Trend	YoY											

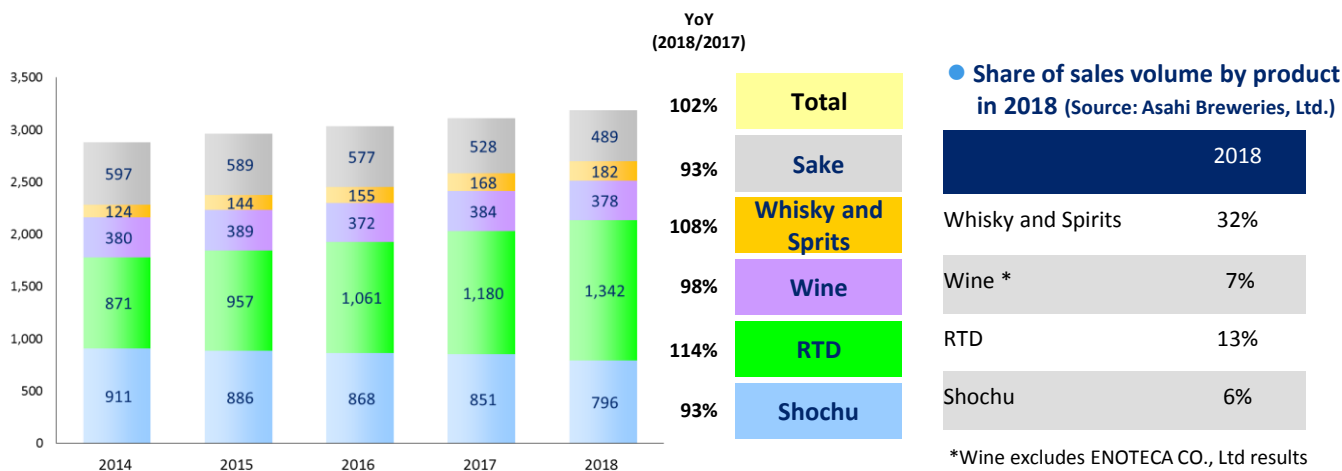
Source: Asahi estimate

Size of Domestic Beer Market (taxable shipment volume; Millions of cases)

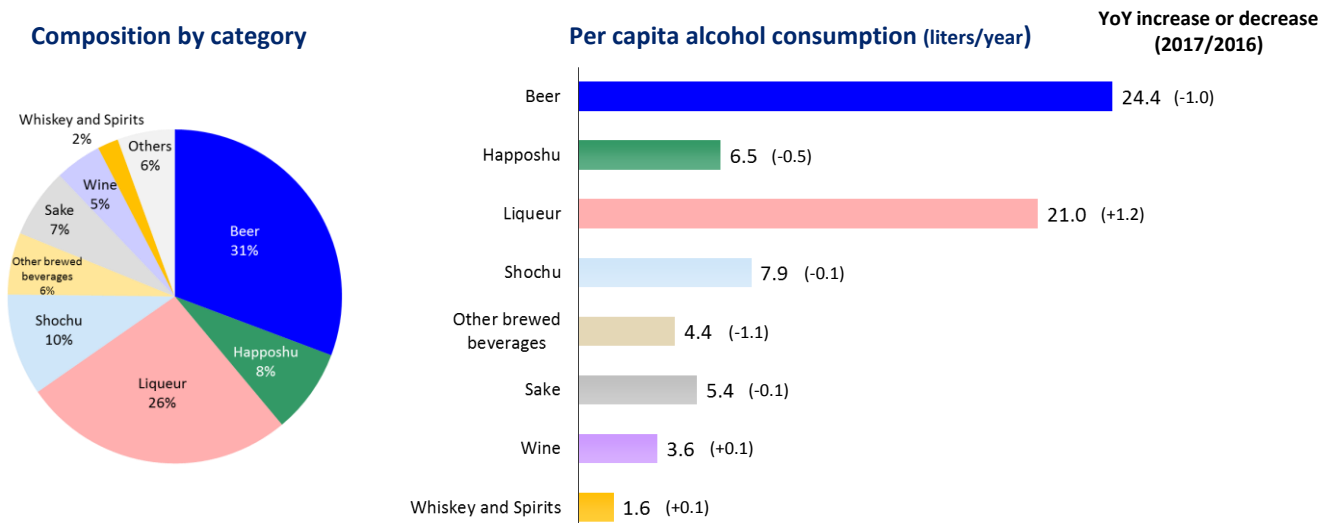
Source: Brewers Association of Japan, Society to Consider the Happoshu Tax System.



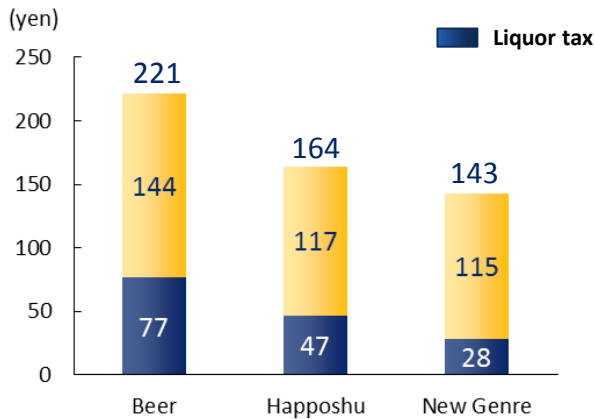
Size of Domestic Market for Other Drinks (taxable shipment volume; 1,000 KL, estimates)



Taxable Shipment Volume in 2017 (Compiled from National Tax Agency reference materials)

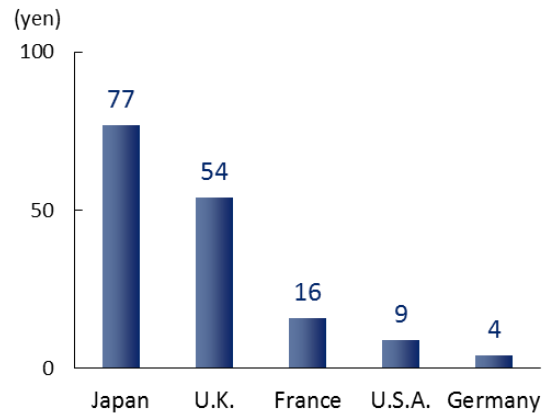


Domestic: Comparison of the Liquor Tax on a 350 ml Serving (yen)



Note: The upper figures are store prices at a major convenience store chain.
(Includes consumption tax, at the end of 2018.)

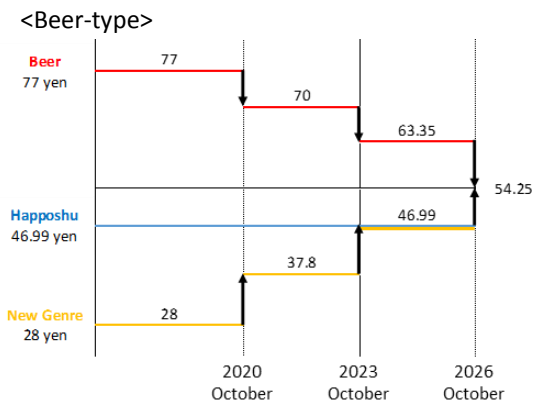
Other Major Countries: Comparison of the Liquor Tax on Beer (yen)



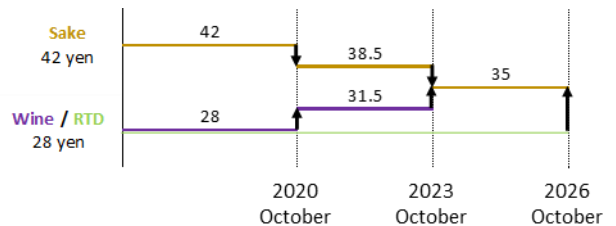
Source: Brewers Association of Japan (January 2016).

Notes: 1. The monetary amounts (liquor tax, consumption tax, and retail price) are for a 350 ml serving, in yen.
2. Amounts are converted into yen at ¥125.15/euro, ¥111.94/US\$, and ¥166.70/pound, the rates effective at the end of May 2016.
3. U.S.A. survey was conducted in New York.

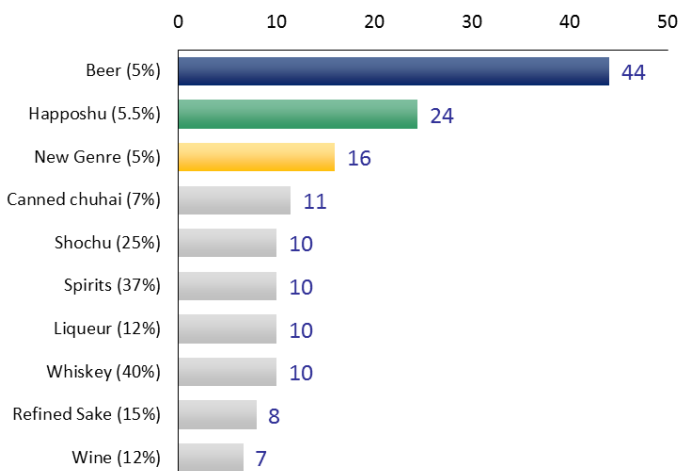
Revision of Liquor Tax (liquor tax on a 350 ml serving (yen))



<Sake / Wine / RTD>

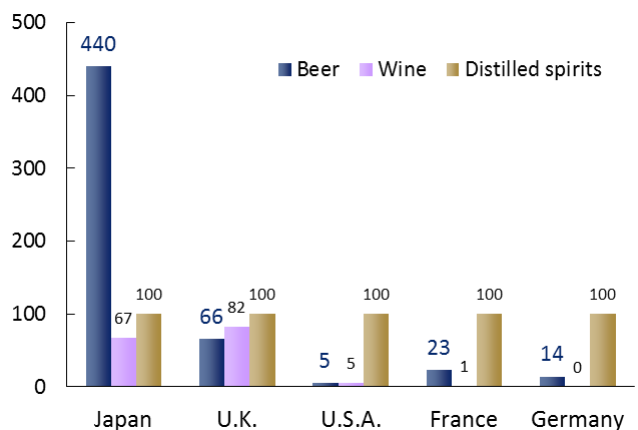


Domestic: Liquor Tax Comparison per Percentage of Alcohol per Liter (yen)



Source: National Tax Agency, "Sake no Shiori (Statistics on Alcoholic Beverages)" (2018).

Other Major Countries: Liquor Tax Index per Percentage of Alcohol (distilled spirits = 100)



Source: Brewers Association of Japan (January 2016).
Note: U.S.A. survey was conducted in New York.

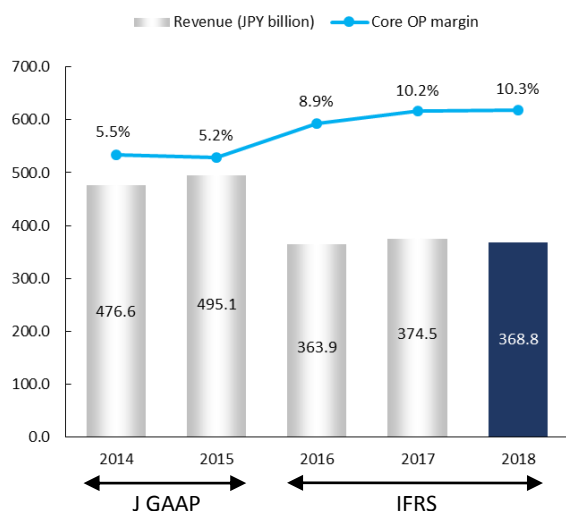
Asahi Soft Drinks Co., Ltd.

Corporate Profile, based on 2018 results

Business Field	Manufacture and sales of a range of soft drinks, operation of vending machines, and related operations. Focusing on core brands (<i>MITSUYA</i> , <i>WILKINSON</i> , <i>WONDA</i> , <i>Juroku-Cha</i> , <i>OISHII MIZU</i> , <i>CALPIS</i>) and facilitating health field
Established	March 1972
Issued Capital	¥11.1 billion
Number of employees	3,417 (consolidated)

Soft Drinks Business

Revenue and Core OP Margin Trend



Facilitation of Health Field

FOSHU

Foods with Function Claims

Lactic Acid Drink



Main Brands



MITSUYA CIDER (500 ml PET bottle)

The well-known fresh taste of this drink starts with water “polished” through repeated filtration, to which we add fragrances gathered from fruit and other sources. No heat is applied in the production process, and no preservatives are added. Ever since its debut in 1884, *Mitsuuya Cider* has been a nationally famous carbonated beverage.

Suggested retail price (tax not included): 500 ml ¥140



WILKINSON TANSAN (500 ml PET bottle)

The No. 1 sparkling water brand*. Consisting only of “polished” water that has been carbonated, it packs a refreshing punch. This genuine sparkling water has the kind of clear, clean taste preferred by adults. Enjoy it as either a mixer or straight.

Suggested retail price (tax not included): 500 ml ¥95



WONDA Morning Shot (185 mg can)

Made especially for morning consumption, this canned coffee goes down easily but has a bracing bitterness. It features a just-roasted, just-ground, just-poured taste suitable for starting your day.

Suggested retail price (tax not included): 185 mg ¥115



Asahi Juroku-cha (630 ml PET bottle)

Made from 16 carefully selected ingredients. With no caffeine and an aromatic, clean taste, this tea can be gulped down easily. The blend is perfect for healthy hydration.

Suggested retail price (tax not included): 630 ml ¥140



Asahi OISHII MIZU (600 ml PET bottle)

The delicious taste of nature, just as it was meant to be. This natural water from abundant nature is collected from deep underground. We use a sterile packaging method to safely bring you the taste of natural mineral water.

Suggested retail price (tax not included): 600 ml ¥115

CALPIS (470 ml “peace bottle”)

This fermented lactic beverage, made from lactic acid bacteria and raw milk, has 100 years of history. We remove the butterfat from fresh, domestically produced milk, then slowly ferment the milk with our unique lactic acid bacteria.

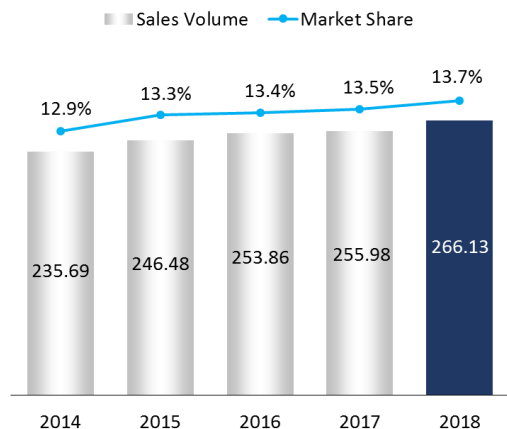
The invigorating taste of nature’s goodness can be enjoyed by everyone from children to the elderly.

Suggested retail price (tax not included): 470 ml ¥460

Note: Prices are current as of December 2018.

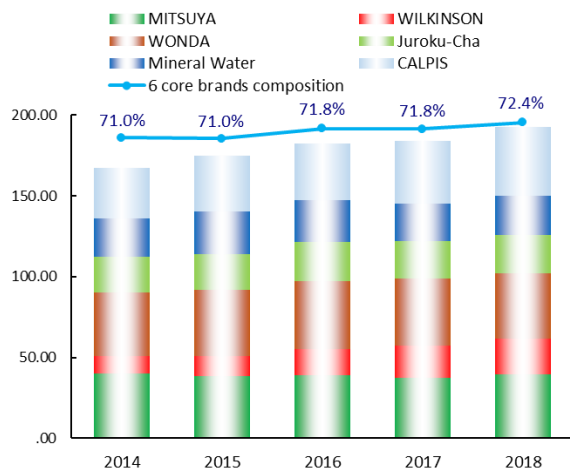
Sales Volume and Market Share Trend

(Millions of cases)



Sales Volume and Composition Trend of 6 Core Brands

(Millions of cases)



Asahi Soft Drinks Monthly Sales Volume YoY Performance by Category and 6 Core Brands (2019)

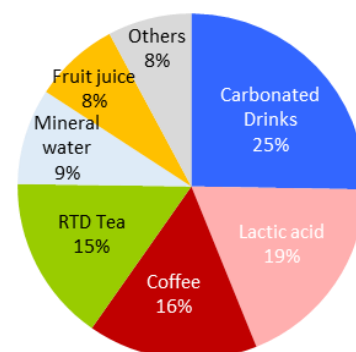
Category / Brand	January	February	March	April	May	June	July	August	September	October	November	December	H1 (Jan-June)	H2 (July-Dec)	Total
Carbonates	2%	18%	11%	10%	15%	11%							11%		
MITSUYA	-6%	17%	6%	3%	0%	-1%							3%		
WILKINSON	13%	14%	11%	21%	34%	33%							22%		
Lactic Acid Drink	-6%	10%	8%	-1%	4%	6%							4%		
CALPIS	-6%	11%	8%	-2%	3%	-1%							2%		
CALPIS concentrated	-2%	8%	7%	0%	-1%	23%							8%		
Coffee	-19%	-1%	3%	-11%	3%	1%							-3%		
WONDA	-18%	0%	4%	-11%	4%	2%							-3%		
Tea	-6%	6%	13%	7%	-12%	6%							2%		
Asahi "Juroku-Cha"	-8%	8%	19%	10%	-19%	11%							3%		
Mineral Water	-14%	-6%	-9%	-7%	-31%	-18%							-16%		
OISHII MIZU	-14%	-6%	-9%	-7%	-31%	-18%							-16%		
Fruit Juice	-9%	-7%	8%	1%	-5%	-10%							-4%		
Bireley's	-5%	-2%	7%	3%	-12%	-4%							-2%		
Welch's	-17%	0%	15%	-8%	0%	-17%							-6%		
Total	-7%	7%	7%	2%	0%	4%							2%		
Health Functional Category	-2%	40%	14%	19%	35%	53%							27%		
Market (Asahi estimate)	1%	2%	-2%	-1%	0%	-4%							-1%		

Sales by Brand and Category

(Millions of cases)

	2018	2017	YoY
Carbonated drinks total	67.26	62.06	108.4%
<i>MITSUYA CIDER</i>	39.47	37.52	105.2%
<i>WILKINSON</i>	22.25	19.90	111.8%
Lactic acid drinks total	49.53	44.37	111.6%
<i>CALPIS</i>	42.63	38.34	111.2%
Coffee total	42.11	44.17	95.3%
<i>WONDA</i>	40.24	41.65	96.6%
RTD Tea total	41.29	40.20	102.7%
<i>Asahi "Juroku-Cha"</i>	24.08	22.93	105.0%
Mineral water total	23.96	23.46	102.1%
Fruit juice total	21.20	22.42	94.6%
Other drink total	20.77	19.29	107.7%
Total	266.13	255.98	104.0%

2018 Composition

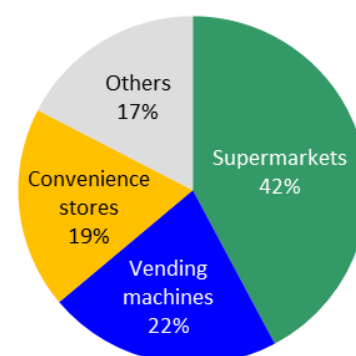


Sales by Marketing Channel

(Millions of cases)

	2018	2017	YoY
Vending machines	57.64	54.82	105.1%
Over-the-counter total	208.49	201.16	103.6%
Convenience stores	49.86	49.40	100.9%
Supermarkets	112.35	107.14	104.9%
Others	46.29	44.62	103.7%
Total	266.13	255.98	104.0%

2018 Composition

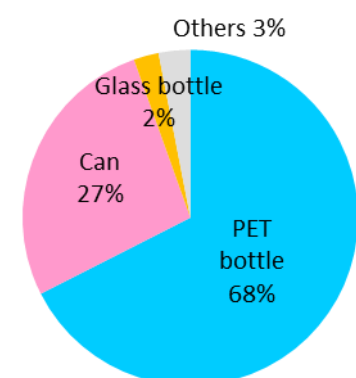


Sales by Container Type

(Millions of cases)

	2018	2017	YoY
Can	71.93	74.00	97.2%
PET bottle total	179.68	167.21	107.5%
Large size (up to 2L)	69.83	67.54	103.4%
Small size (up to 660ml)	109.84	99.67	110.2%
Glass bottle	6.42	6.39	100.5%
Paper container and others	8.11	8.37	96.8%
Total	266.13	255.98	104.0%

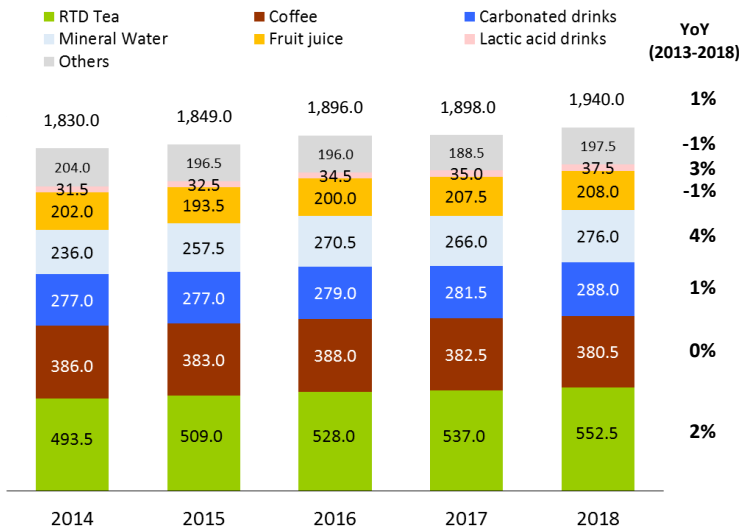
2018 Composition



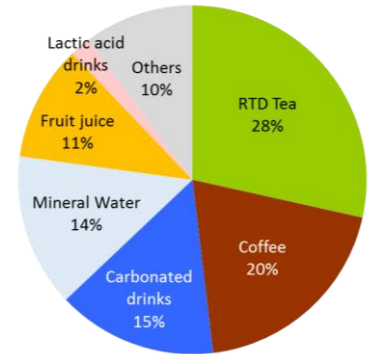
Sales by Category

(Millions of cases)

Source : Inryosoken

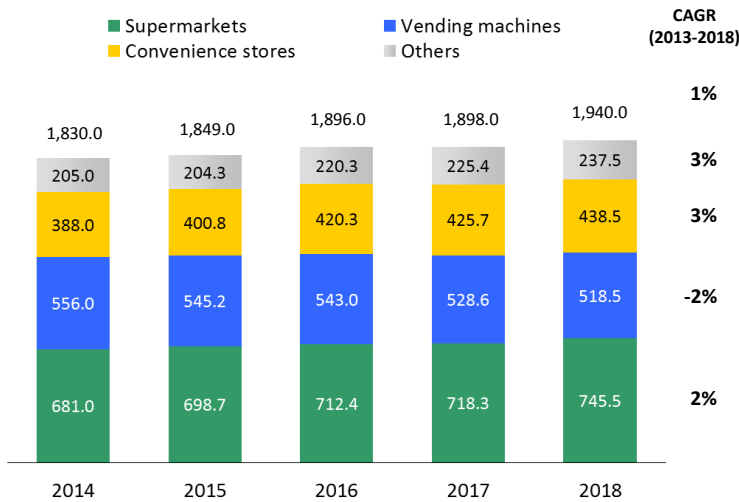


2018 Composition

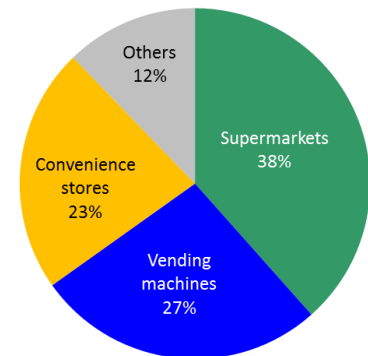


Sales by Marketing Channel

(Millions of cases)

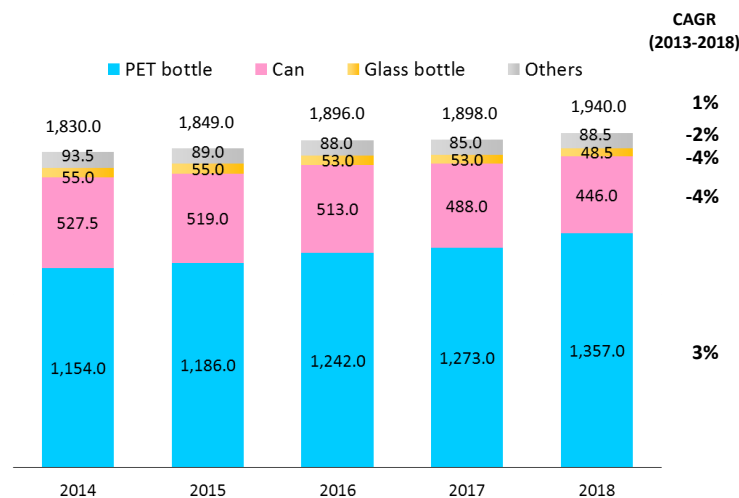


2018 Composition

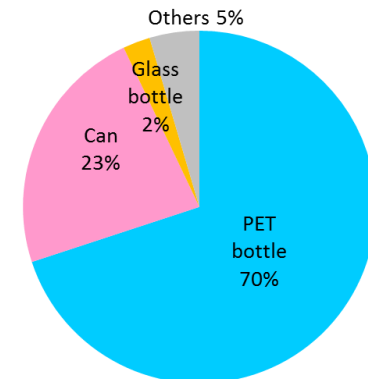


Sales by Container Type

(Millions of cases)



2018 Composition



Asahi Group Foods, Ltd.

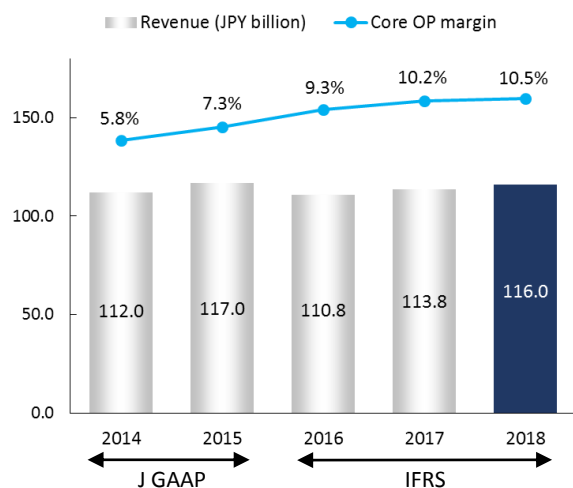
Corporate Profile, based on 2018 results

Business Field	Asahi Group Foods, Ltd. offers lineup of highly original products produced by 3 major subsidiaries. Confectioneries, Supplements, Baby Products, Freeze-Dried Foods and others.
Established	July 2015
Issued capital	¥5.0 billion
Number of employees	1,303(consolidated)

Note: Business results are calculated based on the structure of Asahi Group Foods, Ltd., which has started the business on 1 January 2016.

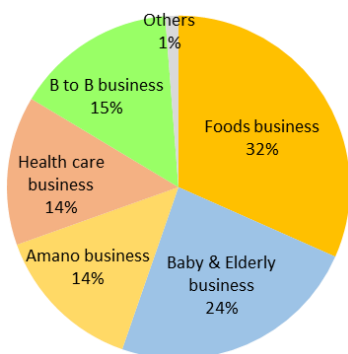
Food Business

Revenue and Core OP Margin Trend



Sales Composition by Product Category (2018)

On a value basis



Main Brands



MINTIA Wild & Cool

Brisk and refreshing! This standard mint tablet has a unique, exhilarating flavor and create an invigorating cooling sensation in the mouth.

Suggested retail price (tax not included):
50 tablets (7g) ¥100



Dear Natura Strong 39 Amino Multi-vitamin & Mineral

This product provides 39 types of ingredients in three tablets a day. It contains multi-vitamin & mineral and 18 types of amino acids including 9 essential amino acids. This supplement is good for those who are busy and hope to spend healthy life everyday.

Suggested retail price (tax not included):
300 tablets (for 100 days) ¥3,200



Lebense Milk HiHi

This infant formula was developed based on many years of research into mother's milk and state-of-the-art knowledge of infant nutrition. Since the ingredients and their balance closely approximate breast milk, it can be used with confidence and peace of mind when milk production is insufficient or breastfeeding isn't possible for some other reason.

Suggested retail price (tax not included):
850g price is discretionary



Goo Goo Kitchen

This line of baby food was developed to relieve concerns about refusal to eat or swallowing without chewing, with careful attention paid to the size and firmness of ingredients and easy-to-eat texture depending on the age of months.

Suggested retail price (tax not included):
80g price is discretionary



Itsumono Miso soup Eggplant

This freeze dried miso soup is made from mellow blended miso and bonito flake stock. It has a classic flavor and goes down smoothly, providing full enjoyment of the silky smooth texture of eggplant.

Suggested retail price (tax not included):
1 pack ¥100



The Umani

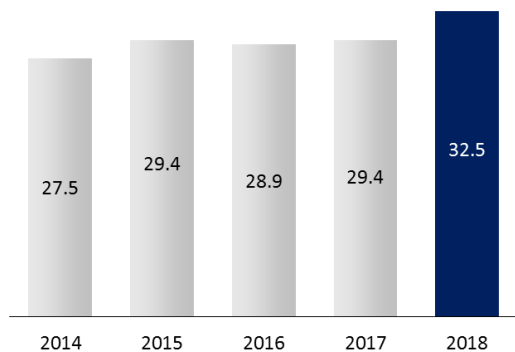
Focused on umami the ingredients originally have, this soup is made by freeze-dried method avoiding the loss of color, flavor and texture of ingredients.

Suggested retail price (tax not included):
1 pack ¥100

Note: Prices are current as of December 2018.

Candy Tablet Market Trend

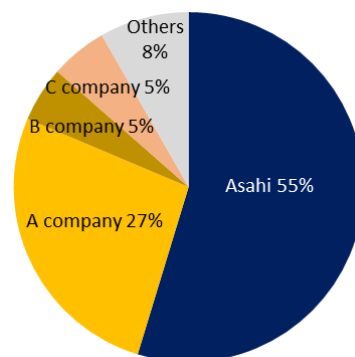
(Billions of yen)



Source: INTAGE Food SRI / candy (candy tablet market) / nationwide (excluding Okinawa) / all-industry, January 2014 to December 2018.

Candy Tablet Market Share (2018)

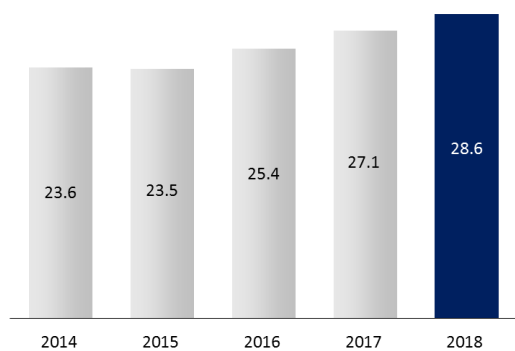
On a value basis



Source: INTAGE Food SRI / candy (candy tablet market) / nationwide (excluding Okinawa) / all-industry, January 2018 to December 2018.

Baby Food Market Trend

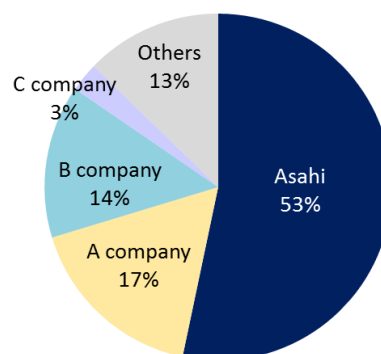
(Billions of yen)



Source: INTAGE SDI data, all-industry

Baby Food Market Share (2018)

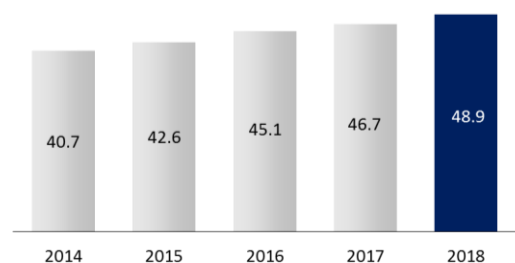
On a value basis



Source: INTAGE SDI data, all-industry

Instant Miso Soup Market Trend

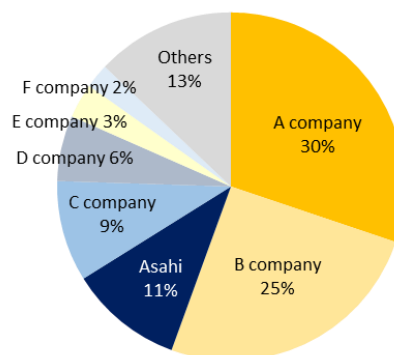
(Billions of yen)



Source: INTAGE Food SRI / miso soup / nationwide (excluding Okinawa) / all-industry, January 2014 to December 2018.

Market Share for Instant Miso Soup (2018)

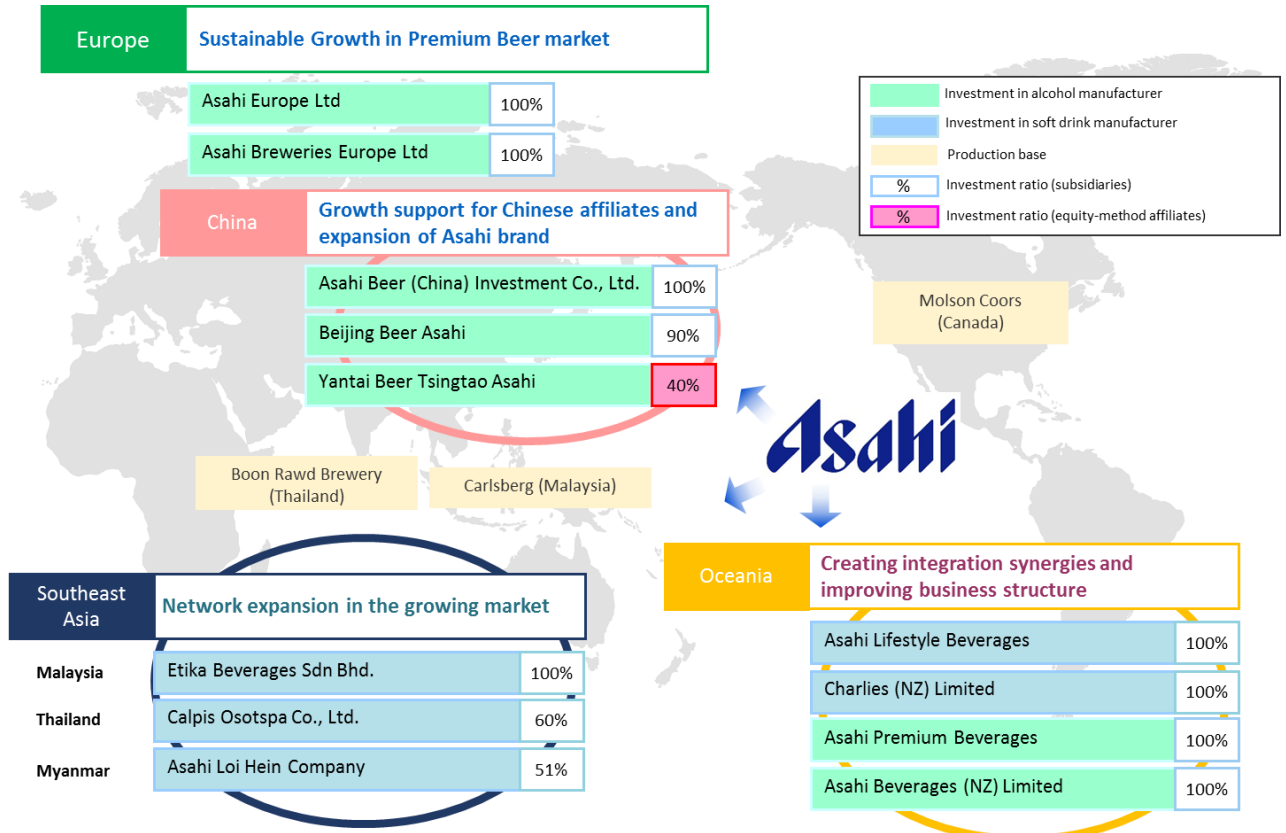
On a value basis



Source: INTAGE Food SRI / miso soup / nationwide (excluding Okinawa) / all-industry, January 2018 to December 2018.

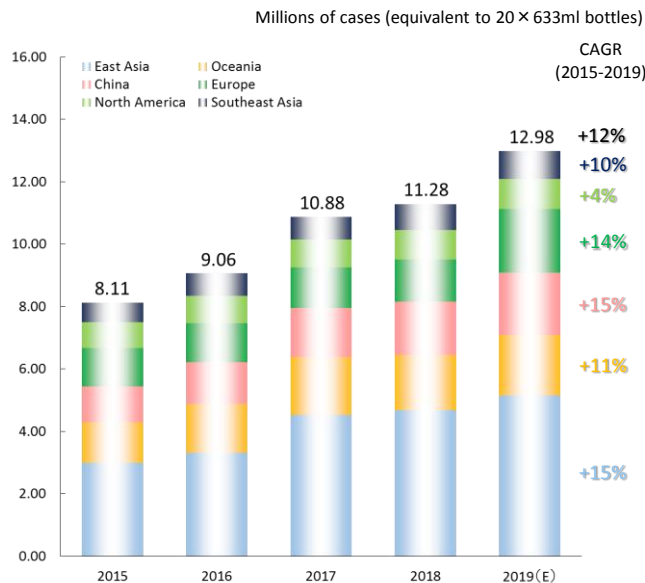
Overseas Business and Capital Alliances

(As of December 31, 2018)

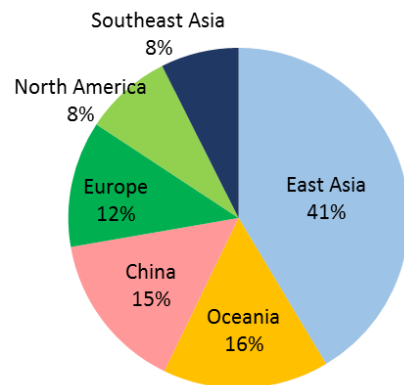


Overseas Sales of Super Dry

Sales Volume Trend



Sales Composition by Area (2018)



Top 15 Beer Producing Countries

Source : Barth Report (Barth Haas Group)

Ranking	Country	Production										CAGR 2008-2017
		2008	2009	2010	2011	2012	2013	2014	2015	2016	2017	
1	China	41.03	42.36	44.83	48.99	49.02	50.65	49.67	47.16	45.06	44.02	0.8%
2	USA	23.06	23.10	22.90	22.65	23.01	22.53	22.61	22.41	22.35	21.78	-0.6%
3	Brazil	10.63	10.70	12.87	13.30	13.28	13.47	14.14	13.86	13.33	14.00	3.1%
4	Mexico	8.23	8.23	7.99	8.15	8.25	8.20	7.80	9.71	10.50	11.00	3.3%
5	Germany	10.29	9.81	9.57	9.55	9.46	9.44	9.53	9.56	9.50	9.30	-1.1%
6	Russia	11.40	10.85	10.29	9.81	9.76	8.93	8.22	7.82	7.82	7.44	-4.6%
7	Japan	6.11	5.98	5.81	5.60	5.77	5.72	5.65	5.38	5.52	5.16	-1.9%
8	Vietnam	1.85	2.30	2.65	2.78	2.98	3.57	3.89	3.67	3.79	4.38	10.0%
9	United Kingdom	4.96	4.51	4.50	4.57	4.30	4.20	4.43	4.41	4.37	4.33	-1.5%
10	Poland	3.56	3.22	3.60	3.60	3.93	3.96	3.95	4.09	4.14	4.05	1.4%
11	Spain	3.34	3.38	3.34	3.36	3.30	3.27	3.35	3.48	3.65	3.72	1.2%
12	South Africa	2.59	2.88	2.96	3.09	3.15	3.15	3.15	3.21	3.20	3.23	2.5%
13	Nigeria	1.54	1.60	1.76	1.96	2.40	2.65	2.70	2.70	2.60	2.60	6.0%
14	Netherlands	2.72	2.54	2.39	2.36	2.43	2.36	2.37	2.40	2.46	2.48	-1.0%
15	India	1.38	1.55	1.56	1.85	1.95	1.99	2.00	2.12	2.21	2.25	5.6%
	15 countries total	132.70	133.02	137.02	141.62	142.98	144.08	143.46	141.98	140.49	139.73	0.6%
	World Beer Production	181.92	181.76	186.35	192.89	196.20	197.21	196.31	196.10	195.75	195.17	0.8%

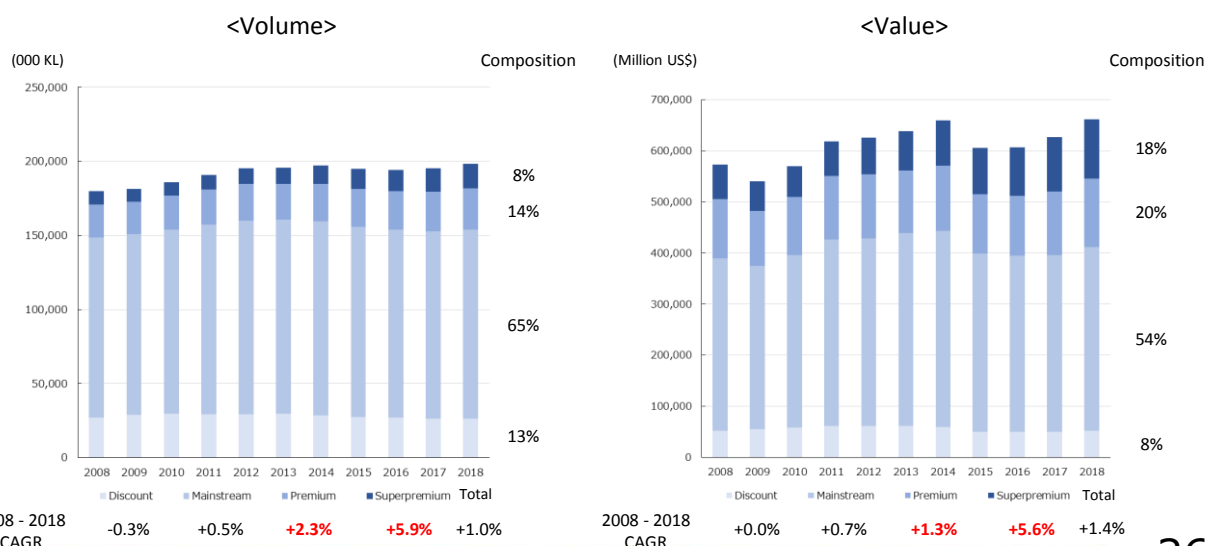
Top 15 Breweries

Source : Barth Report (Barth Haas Group)

Ranking	Company	Country	Output 2017 (million KL)	World Share (%)	Output YoY	Output 2016 (million KL)	World Share (%)
1	Anheuser-Busch InBev	Belgium	61.25	31.4	41.2%	43.39	22.2
2	Heineken	Netherlands	21.80	11.2	8.9%	20.01	10.2
3	China Resources Breweries	China	12.60	6.5	6.1%	11.88	6.1
4	Carlsberg	Denmark	11.34	5.8	-3.0%	11.69	6.0
5	Molson Coors	USA / Canada	9.96	5.1	4.6%	9.52	4.9
6	Tsingtao Brewery Group	China	7.80	4.0	-1.5%	7.92	4.0
7	Asahi	Japan	5.82	3.0	-1.4%	5.90	3.0
8	Yanjing	China	4.30	2.2	-4.4%	4.50	2.3
9	BGI / Groupe Castel	France	3.88	2.0	17.9%	3.29	1.7
10	Kirin	Japan	2.99	1.5	-29.6%	4.25	2.2
11	Petropolis	Brazil	2.50	1.3	16.8%	2.14	1.1
12	Efes Group	Turkey	2.11	1.1	8.2%	1.95	1.0
13	Constellation Brands	USA	2.10	1.1	0.0%	2.10	1.1
14	San Miguel Corporation	Philippines	1.83	0.9	12.3%	1.63	0.8
15	Saigon Beverage Corp. (SABECO)	Vietnam	1.72	0.9	7.5%	1.60	0.8
	15 companies total		172.27	88.3	11.8%	154.07	78.7
	World Beer Production		195.17		-0.3%	195.75	

Beer Market Trend by Price Category

Source: Global Data



Europe Business

We acquired the *Peroni*, *Grolsch*, *Meantime* and related businesses of SAB Miller plc in October 2016.

Grolsch and *Peroni* are two of the best-known premium beer brands in the world with over 400 years and 150 years of history, respectively, and both are well recognized inter alia in Europe. *Meantime* is a pioneer brand in craft beer category in UK and is rapidly growing its popularity amongst the younger generation in urban areas such as London.

Through this acquisition, we aim to expand its growth platform in Europe and become a global player with a distinct position. We leverage the distribution network of these business to maximize synergies through increasing the presence of its flagship *Asahi Super Dry* brand.

Main Brands

Italy



Netherlands

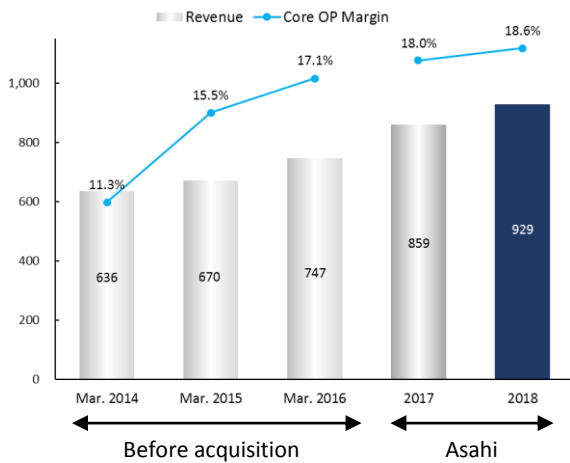


UK

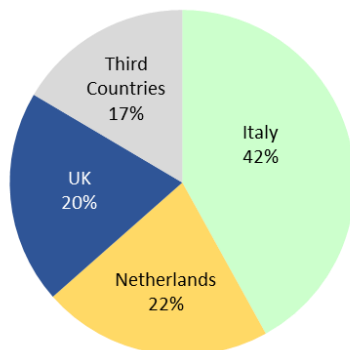


Revenue and Core OP Margin Trend

(Millions Euro)

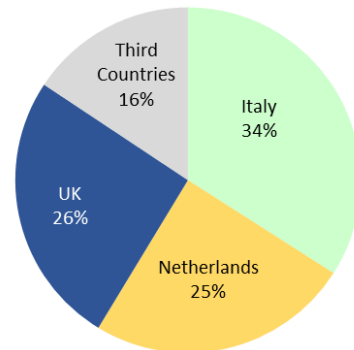


Sales Volume Composition by Country (2018)



Revenue Composition by Country (2018)

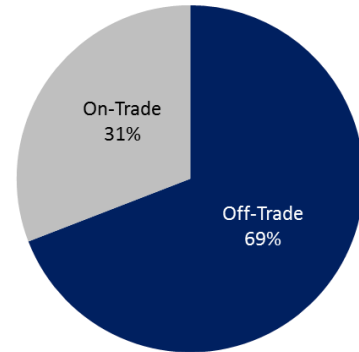
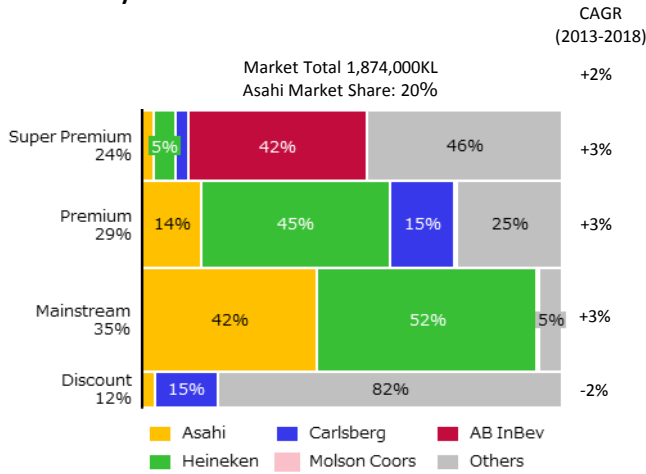
Excluding intercompany / elimination



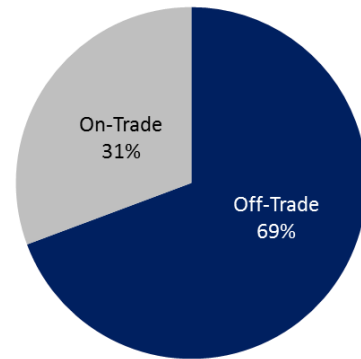
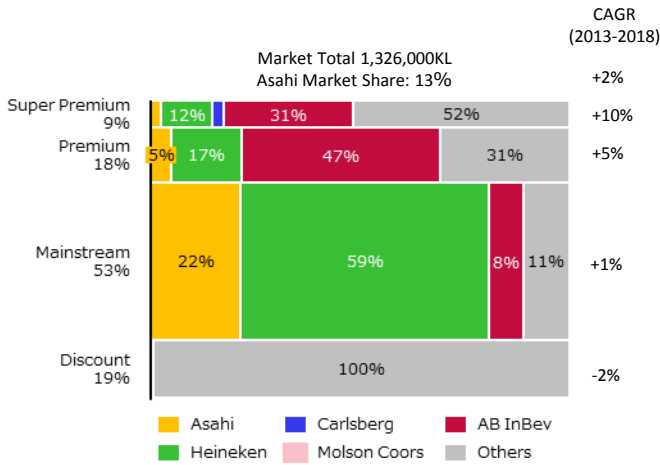
Market Share by Price Segment and Composition by Channel (2018)

Source : Global Data
On a volume basis

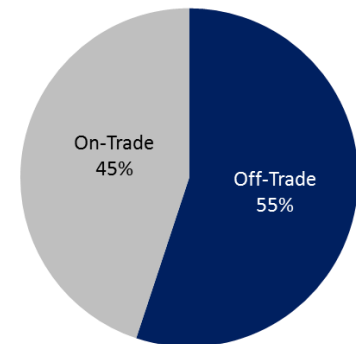
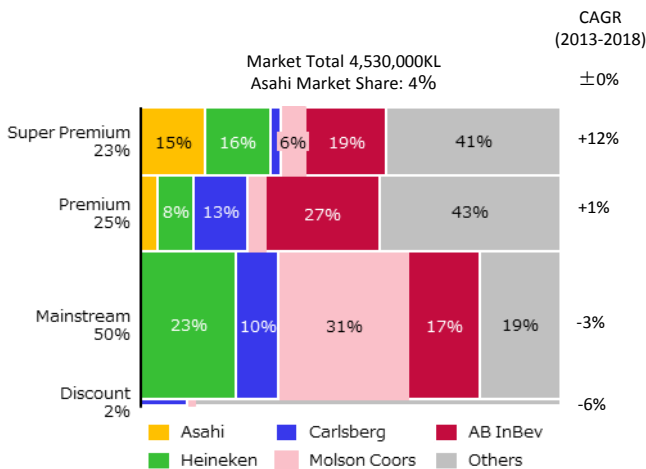
<Italy>



<Netherlands>



<UK>



the price of the leading brand in the most popular pack type = 100
 Super Premium > 151
 150 > Premium > 115
 114 > Mainstream > 91
 90 > Discount

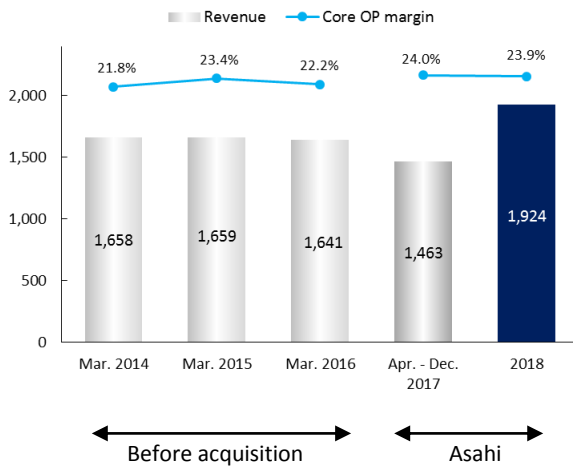
Central & Eastern Europe Business

We acquired the Czech, Slovakia, Poland, Romania, Hungary businesses as well as intellectual property rights relating to the brands, including *Pilsner Urquell* of SABMiller plc in March 2017. (excl. USA and Puerto Rico)

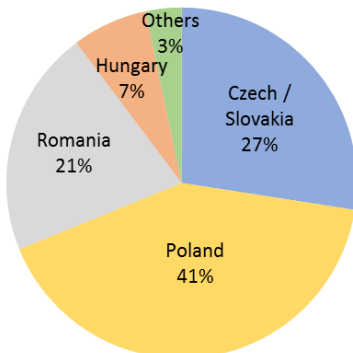
The businesses include global brands such as *Pilsner Urquell*, the original Pilsner beer, and *Kozel*. It has the top market shares in Czech (the world's highest per capita beer drinking country), Poland, Romania and Hungary, providing a strong platform for profitability.

Through the acquisition of these businesses, together with *Asahi Super Dry*, *Peroni* and *Grolsch*, we aim to establish a position as a global player, focusing on a leading premium brand portfolio as well as market leading domestic businesses to achieve sustainable growth.

Revenue and Core OP Margin Trend (Million Euro)



Sales Volume Composition by Country (2018)



Main Brands

Poland



Lech
Tyskie

Czech



Pilsner Urquell
Kozel

Slovakia



Pilsner Urquell
Saris

Romania



Ursus
Timisoreana

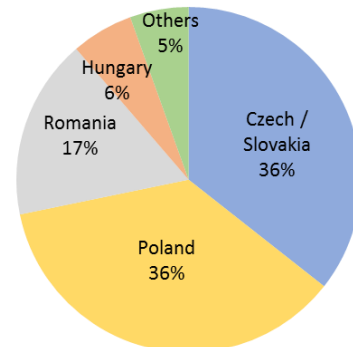
Hungary



Dreher
Arany Aszok

Revenue Composition by Country (2018)

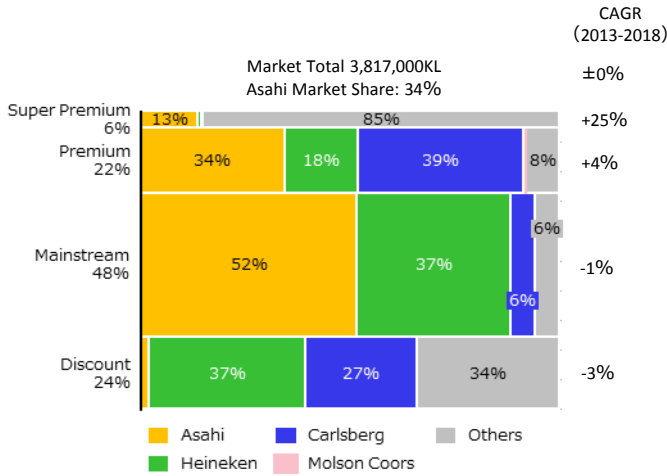
Excluding intercompany / elimination



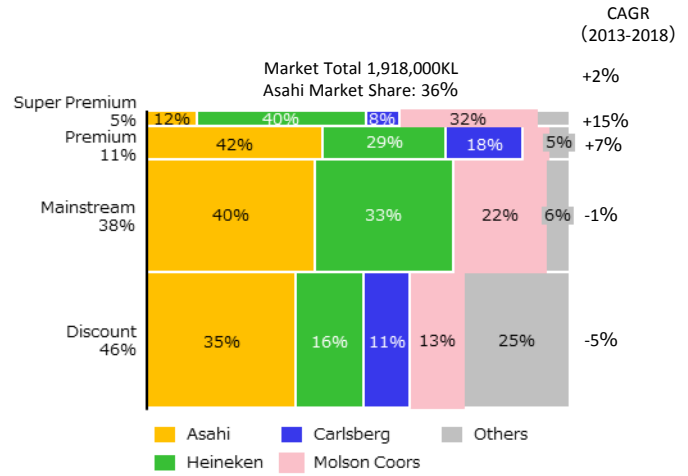
Market Share by Price Segment and Composition by Channel (2018)

Source : Global Data
On a volume basis

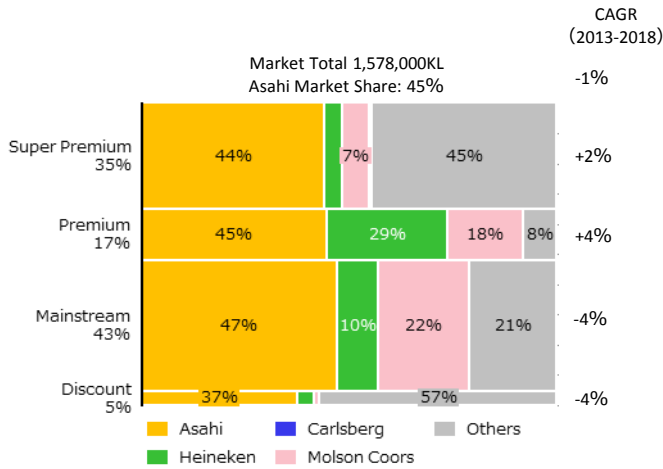
<Poland>



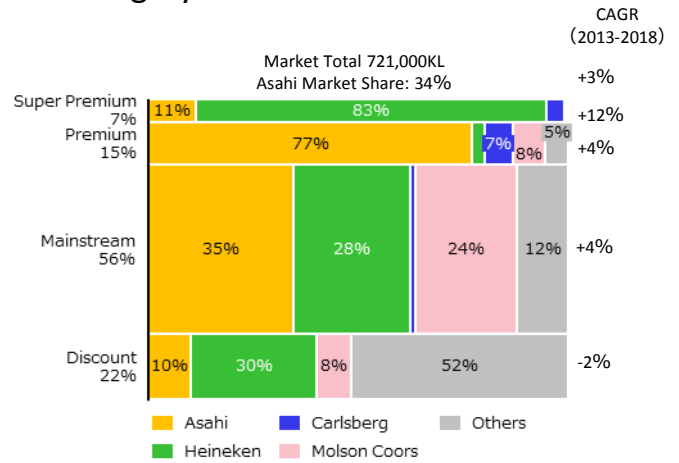
<Romania>



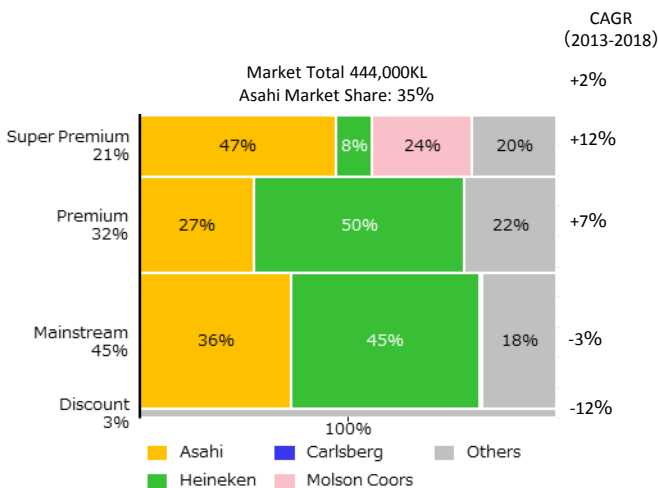
<Czech>



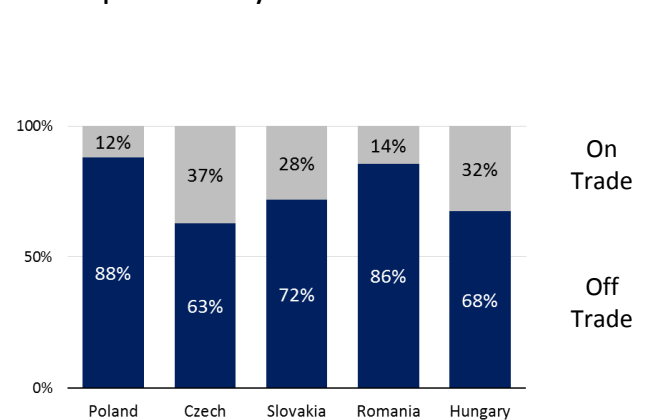
<Hungary>



<Slovakia>



<Composition by Channel>



Oceania Non-Alcohol Beverages Business

In April 2009, Asahi purchased Schweppes Australia Pty Ltd (now Asahi Beverages Pty Limited), the second-largest beverage company in the stably growing Australian soft drink market, from the Cadbury Group.

Schweppes Australia manufactures and markets own-brand and licensed products in its mainstay category of carbonated beverages, as well as sports drinks and fruit juice.

In 2011, Asahi purchased the juice and water businesses of P&N Beverages Pty Ltd, Australia's third-largest beverage company, and Charlie's Group Limited (now The Better Drinks), a New Zealand-based company specializing in premium beverages. In 2012, it continued to strengthen and expand its business base in Oceania by purchasing bottled water specialist Mountain H2O.

Non-Alcohol Beverages Main Brands

Carbonated



Schweppes Pepsi Solo

Water



Cool Ridge Cool Ridge Lightly Sparkling Frantelle

Cordial



Cottee's

Juice



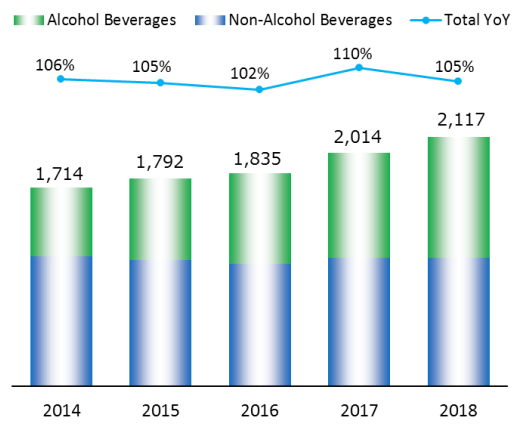
Charlie's Quencher

Sports Drink



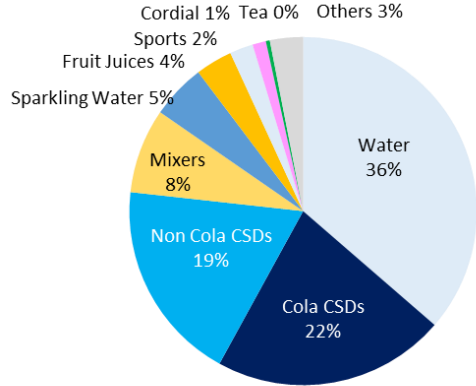
Gatorade

Oceania Business Revenue Trend (Million AUD)



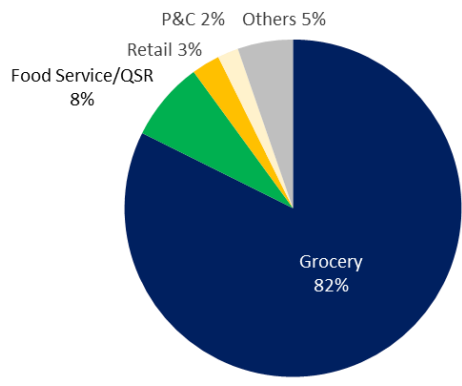
Asahi Beverages Sales Composition by Category (2018)

On a volume basis



Asahi Beverages Sales Composition by Channel (2018)

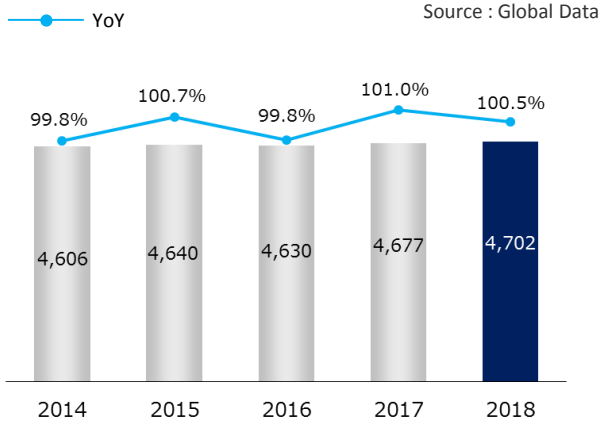
On a volume basis



Australian Non-Alcohol Beverages Market Data

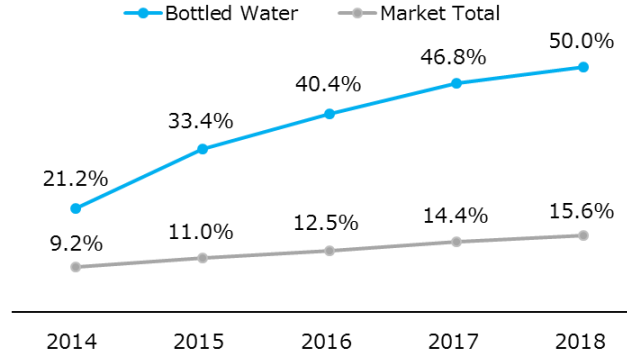
Beverage Market Trend

('000KL)



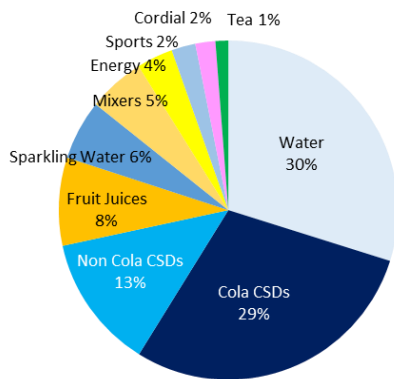
Sales Trend of Private Label

Source : Global Data
On a volume basis



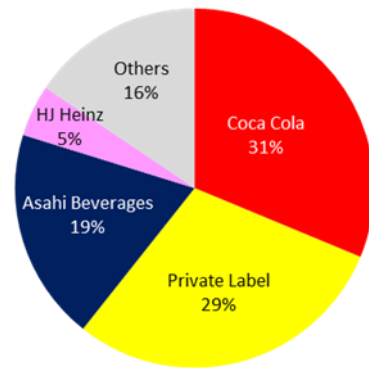
Market Composition by Category (2018)

Source : AZTEC
On a volume basis



Market Share by Company (2018)

Source : AZTEC
On a volume basis

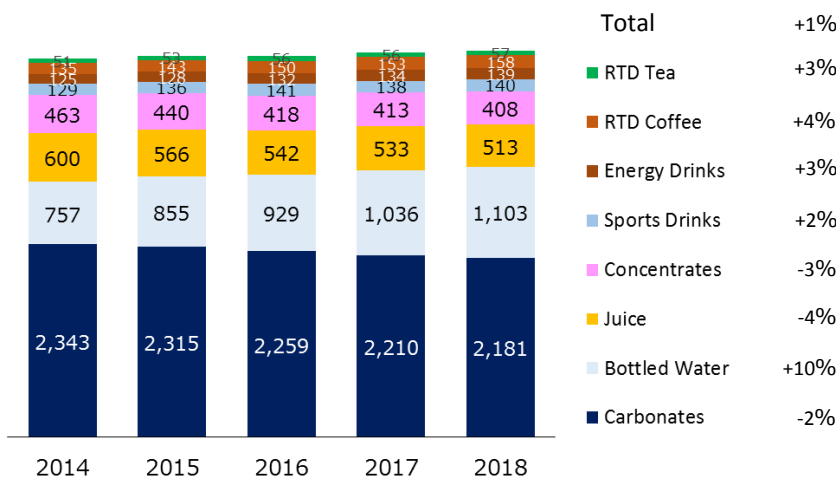


Market Trend by Category

('000KL)

CAGR (2014-2018)

Source : Global Data



Oceania Alcohol Beverage Business

In September 2011, Asahi’s purchase of the Independent Liquor Group (henceforth, the IL Group) marked its full-fledged entry into the Oceania alcohol beverage market. Currently, a corporate group centered on Asahi Premium Beverages Pty Ltd and Asahi Beverages (NZ) Ltd. manufactures and markets a multi-category lineup of alcohol beverages consisting mainly of beer and RTD (low-alcohol) beverages, as well as spirits, wine in Australia and New Zealand. As a beverage maker, we have built up solid brand foundations over the years. Now we have reinforced and enhanced our added value beer portfolio with *Asahi Super Dry* and *Peroni Nastro Azzurro*, premium international beer as well as *Mountain Goat* and *Cricketers Arms*, craft beer.

Alcohol Beverages Main Brands

Beer



RTD



Cider

Spirits

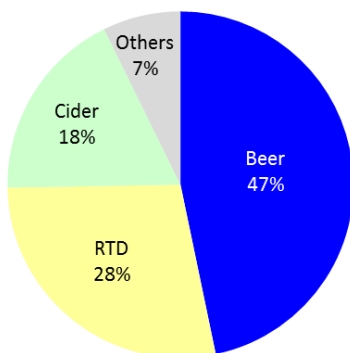


Expansion of Beer Portfolio



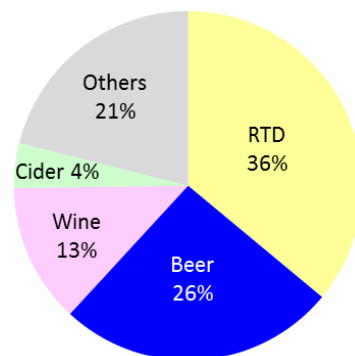
Asahi Premium Beverages (Australia) Composition by Category (2018)

On a value basis



Asahi Beverages (NZ) (New Zealand) Composition by Category (2018)

On a value basis

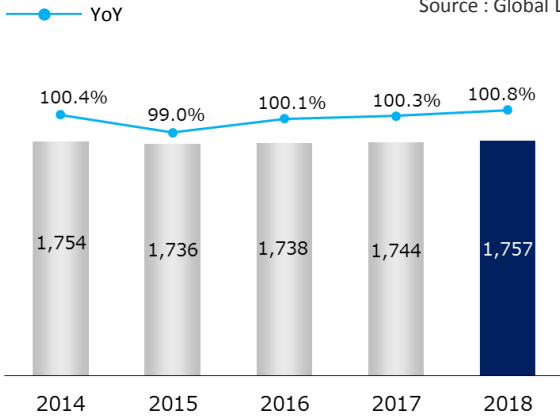


Australian Alcohol Beverages Market Data

Beer Market Trend

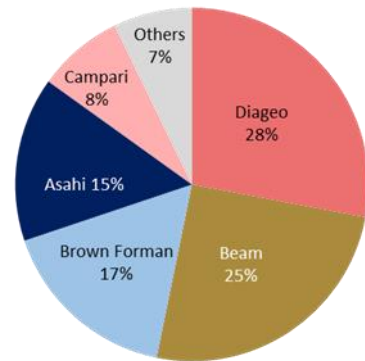
('000 KL)

Source : Global Data



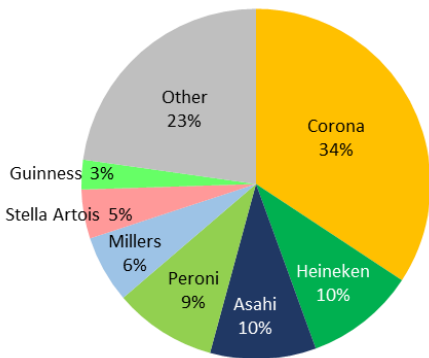
RTD Alcohol Beverages Market Share by Company (2018)

Source : AZTEC
On a value basis



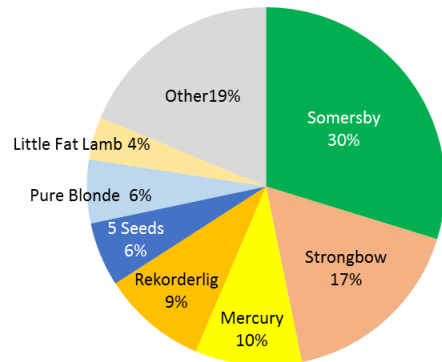
Premium International Beer Market Share by Brand (2018)

Source : AZTEC
On a value basis



Cider Market Share by Brand (2018)

Source : AZTEC
On a value basis

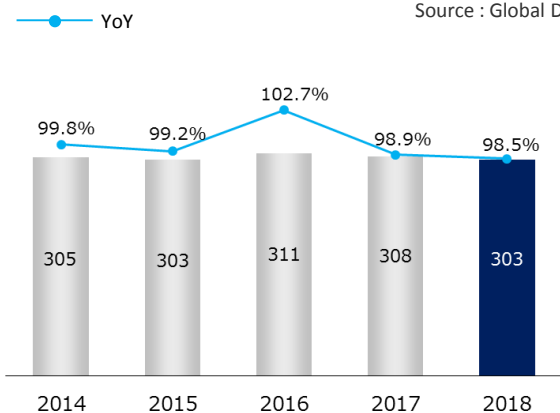


New Zealand Alcohol Beverages Market Data

Beer Market Trend

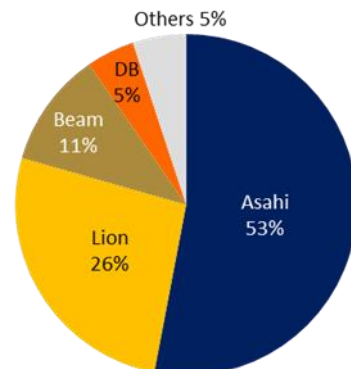
('000 KL)

Source : Global Data



RTD Alcohol Beverages Market Share by Company (2018)

Source : AC Nielsen
On a value basis



Malaysia Business

In November 2011, we entered Malaysian soft drinks market through purchasing Permanis Sdn. Bhd., the second-largest beverage company in Malaysia.

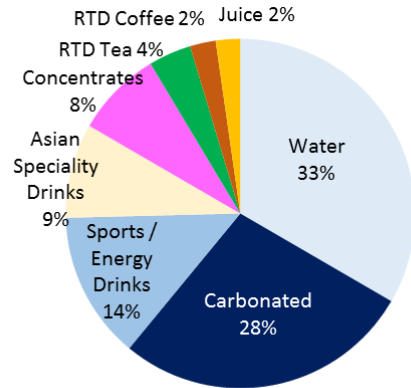
In 2014, we purchased all of the issued shares in the companies engaged in dairy business in Southeast Asia held by Etika International Holdings Limited and entered dairy product business like condensed milk to strengthen the business foundation in Southeast soft drinks market.

Now we launched Asahi brands like *WONDA* and *Calpis* adjusted to the local taste in addition to *Pepsi* and *Tropicana* to enhance the business growth in Malaysian soft drinks market.

In November 2016, we acquired the Pepsi bottling business in Singapore.

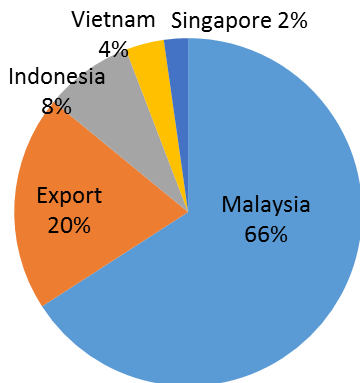
Malaysia Beverages Market Breakdown by Category (2018)

Source : Global Data
On a volume basis



Malaysia Sales Composition by Business Category (2018)

On a value basis



Main Brands



China Business

Since 1994 when we entered China business, we have sold *Super Dry*, *Beijing Beer*, shochu, whiskey and spirits etc. through Asahi Beer (China) Investment Co., Ltd., our subsidiary in China, in the areas including Beijing, Shanghai, Dalian, Guangzhou, Shenzhen.

We have also manufactured *Super Dry* in Beijing Beer Asahi Co., Ltd. and Shenzhen Tsingtao Beer Asahi Co., Ltd.

From now on, we position the expansion of our presence in premium beer market in China as our strategy for growth.

We aim to grow sustainably driven by facilitating sales of European premium brands, *Peroni Nastro Azzuro* and *Pilsner Urquell* in addition to *Super Dry*.

Asahi Super Dry Brand Sales Volume Trend

