



# Bringing Mining Back to the Cuyuna Range? A BLAEDC Update

BLAEDC EXECs:  
Michael Burton  
Kevin Egan  
January, 2015

*Brainerd.com*



**Brainerd Lakes Area  
ECONOMIC DEVELOPMENT  
Corporation**

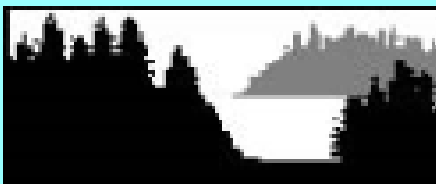
*We're ready. Let's grow!*

The Brainerd Lakes Area Economic Development Corporation (BLAEDC) is a 501c3 non-profit organization.

**Mission Statement:**

**Expanding Business, Building Community, and Growing Jobs  
in Crow Wing County**

**CREDI**

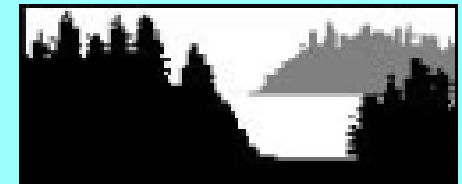


**Contact us!**

**[www.growbrainerdlakes.org](http://www.growbrainerdlakes.org)**

**218-828-0096**

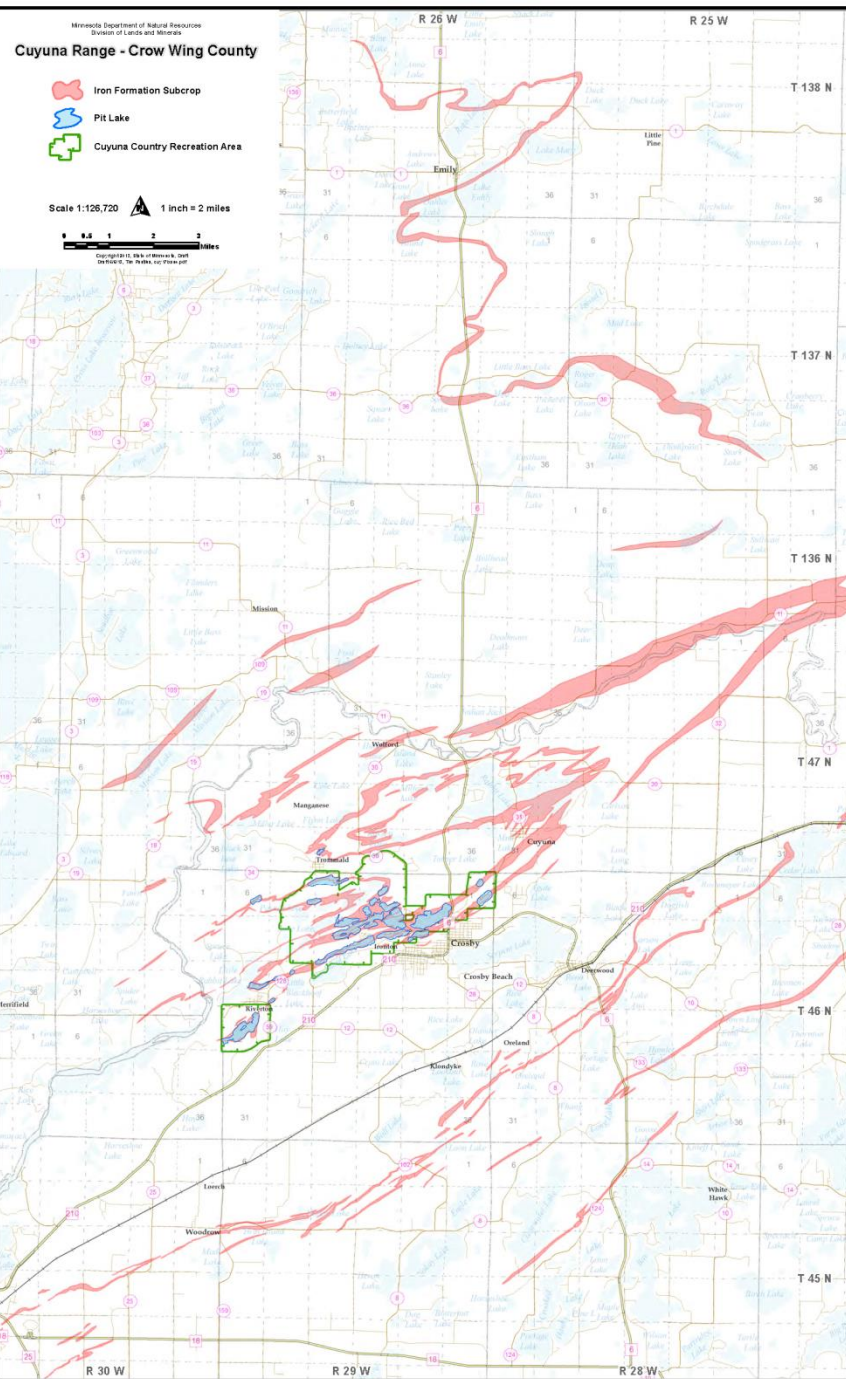
**CREDI**



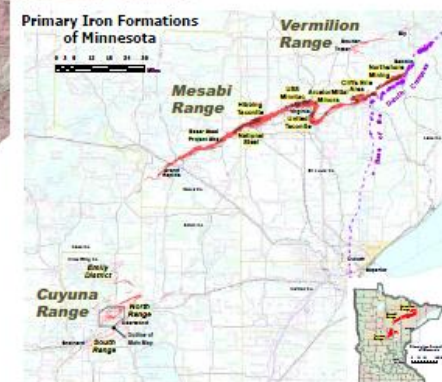
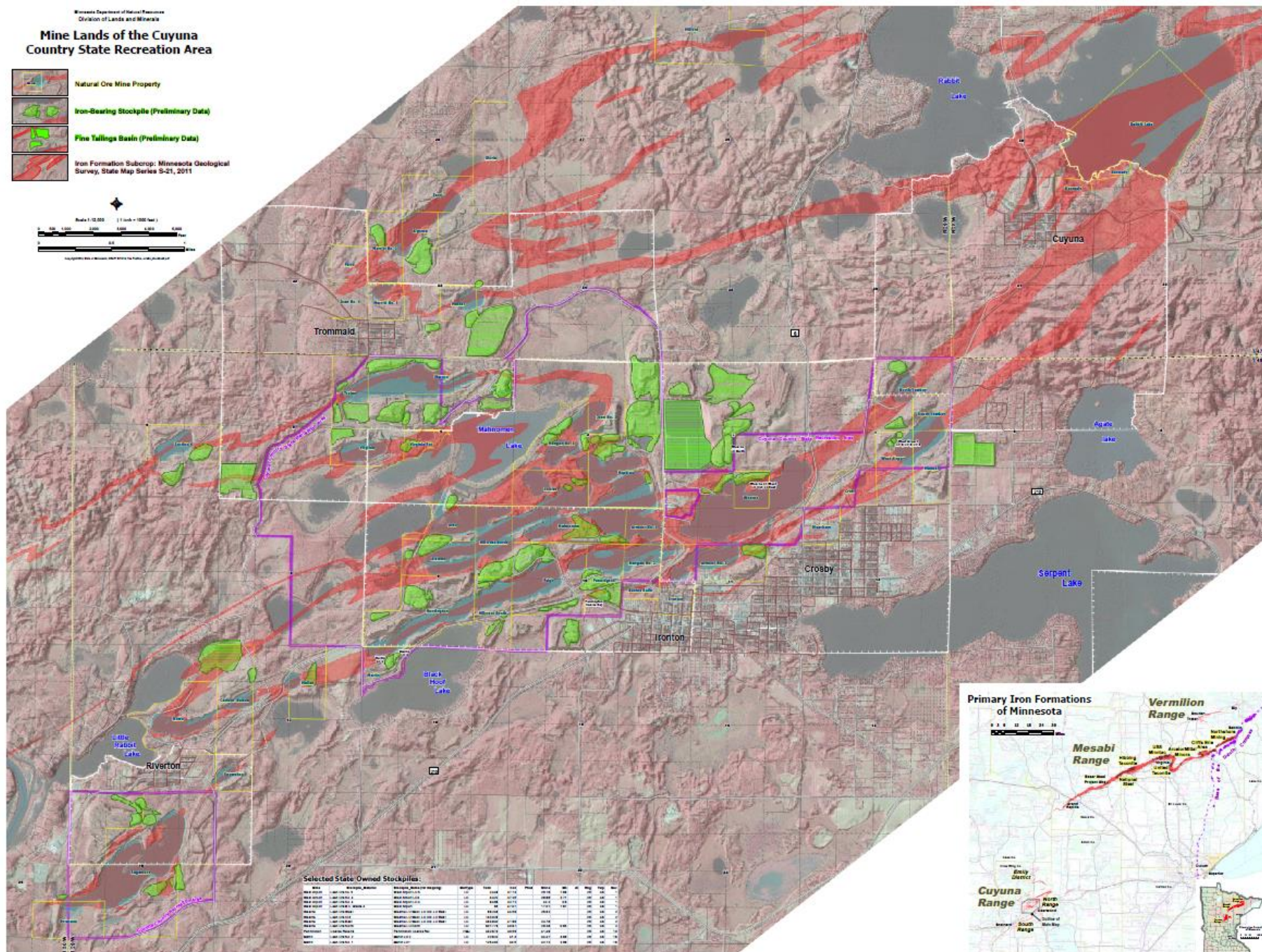
# The More Distant Past

- \* Regional Mining Thrives
- \* The Backbone of Local Economy
- \* 1890-1950











# Mining in the Past



# Ironton

1910



1923



2007



# More Recent Past

- \* Mining Plays Out/Disappears
  - \* 1960-1980
- \* Remnants of Past Operations
  - \* Pit Lakes
  - \* Stockpiles/Recreation Areas



# Creation of the Cuyuna Country State Recreation Area (CCSRA)

- \* Abandoned mining operations left behind mining pits 100 to 525-feet deep and rock stockpiles 200-feet high
- \* Through the efforts of the Iron Range Resources Rehabilitation Board (IRRRB), Crow Wing County, local governments, two joint powers boards, volunteer groups, and the Department of Natural Resources, the area become an outdoor recreation attraction
- \* Officially became a MN State Recreation Area in 1993

# Current Land Use within the CCSRA

- \* Recreation and Tourism
- \* Hope for Future Expansion
- \* Goal of 100 Miles of Mountain Biking Trails





*Brainerd.com*



*Brainerd.com*

© 2015 BLAEDC



*Brainerd.com*



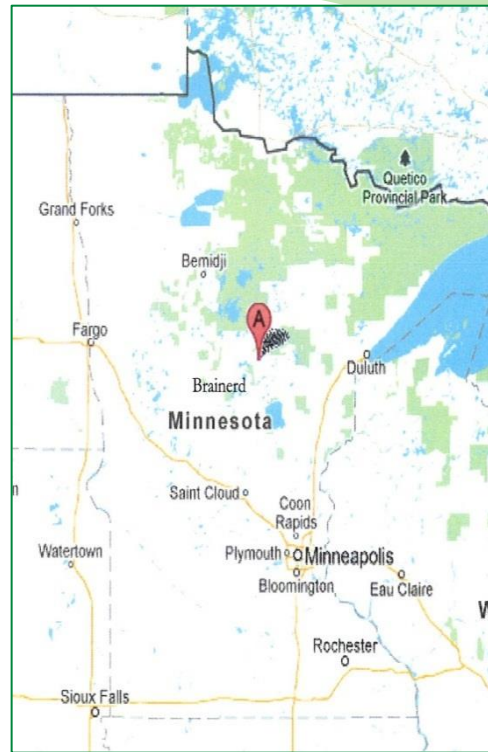
# CMR's Manganese/Iron Update




COOPERATIVE  
MINERAL  
RESOURCES





# Rich Manganese/Iron Deposit in Emily MN



- 
- Since 2010, CMR has been working toward becoming NI 43-101 compliant (a mining guideline) that many investors/mining companies require to get to a commercial operation;



- 
- Borehole waterjet extraction technique was tested in 2011. . . some of that process worked and CMR is looking to possibly use something similar with modifications down the road;

- 
- Recently signed a Memorandum of Understanding with two Canadian firms to enter into a Joint Venture agreement with the intentions of creating a pilot plant with the ultimate goal of producing a green manganese-based battery for the storage industry.

# Joint Venture Partners Star and OTI

- \* Star Minerals Group, Ltd.

- \* Saskatoon, Saskatchewan
- \* Junior Mining Company focused on finding, exploring and developing strategic metal deposits for the battery industry and green energy sector
- \* Trades in the Canadian Stock Exchange under the symbol “SUV”

- \* Octopus Technologies, Inc.

- \* Vancouver, British Columbia
- \* Energy storage company which has developed and patented a smaller, lighter, green battery that significantly reduces the cost of energy storage and improves the capacity and longevity of the battery.



# Prototype OTI Battery Compared to Normal Battery



# For more information

- \* [www.cooperativemineralresources.com](http://www.cooperativemineralresources.com)
- \* Or contact Char Kinzer, [kinzer@cwpower.com](mailto:kinzer@cwpower.com) , 1-800-648-9401

# Future Land Use

- \* Mining Companies Expressing Renewed Interest in Cuyuna Range
- \* Purpose: To Recover “Leftovers” from Years Ago
  - \* Tailings
  - \* Stockpiles
  - \* Underground
- \* Occurring Now in Mesabi Range



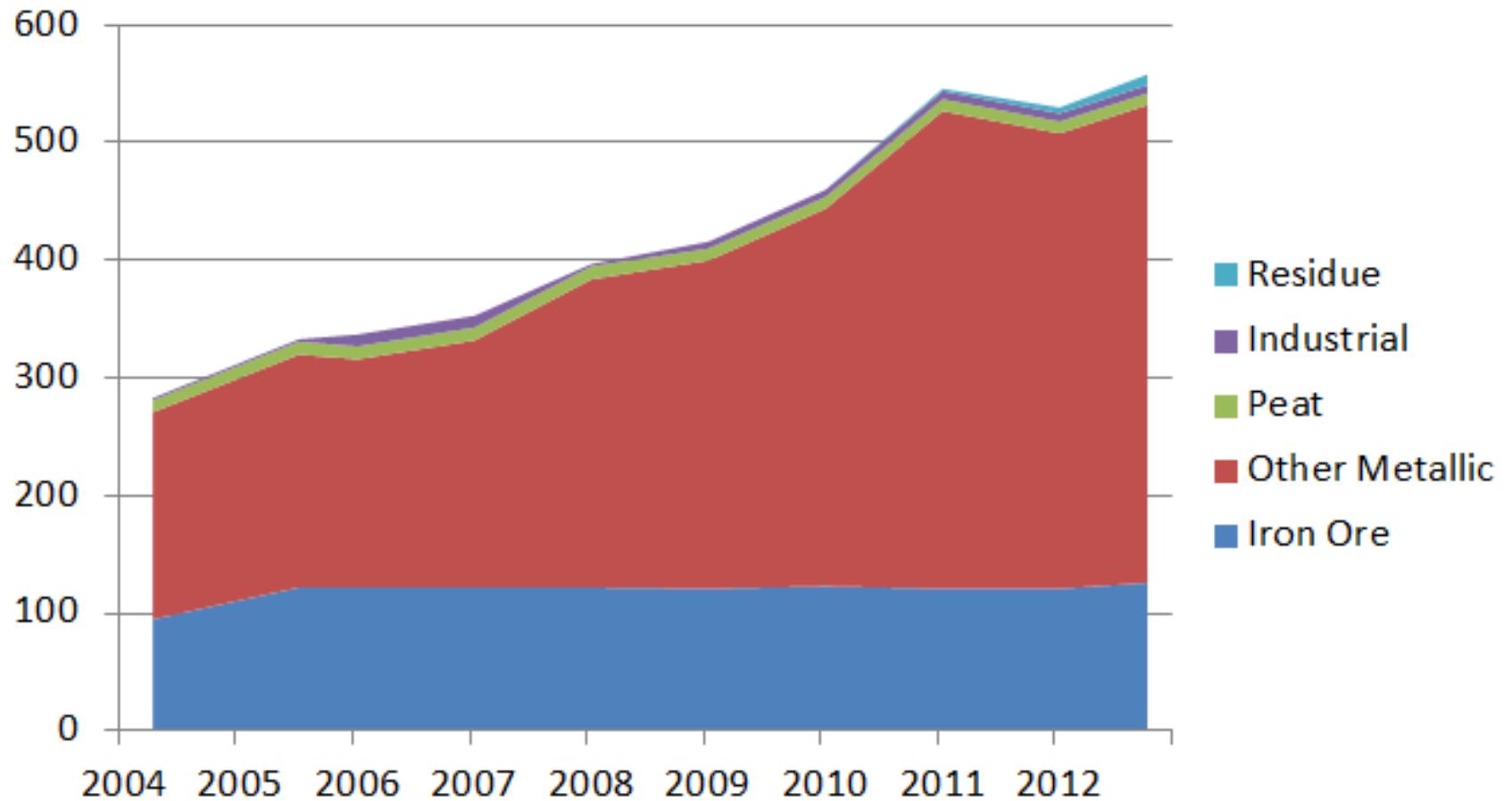
# BLAEDC, CREDI, and “MED” Task Force Purpose

- \* Reviewing Current Options and Opportunities
- \* Need to Understand Future and Balance Interests

# Research

- \* Retention of Consultant
- \* Visits with State DNR
- \* Conferences and Meetings
  - \* Nashwauk
  - \* SME
  - \* Eveleth
  - \* Hibbing
  - \* Crosby
- \* State Role is Critical

# Number of State Mineral Leases





# MN Iron Ore Reserves

Gross Pellet Tons (millions)

	Capacity	Reserves	Mine Life*
Hibtac	8.0	113	14 years
Minorca	2.8	45	16 years
Keetac	5.4	119	22 years
Minntac	14.6	541	37 years
Northshore	6.0	320	53 years
United Tac	<u>5.4</u>	<u>140</u>	26 years
	42.2	1,278	

\*Mines Have Life Spans

Sellner Power Point Slide

# Revenue Distribution

- \* Ownership dictates revenue flow
  - \* Private Parties
  - \* State-Owned
  - \* Tax Forfeited Land
- \* Tax-Forfeited Property Not in Recreational Areas
  - \* 20% to DNR
  - \* **80% to local taxing districts**
    - \* 4/9 school district
    - \* 3/9 county
    - \* 2/9 city or township

# What are the next steps?

- \* Interest of Mining Companies Continues; Pace Uncertain
- \* Process of “Social License” and Permitting is Slow and Political

# Social License

- \* Three Strategies to “Win” Permission
  - \* Leadership
  - \* Stewardship
  - \* Citizenship
- \* A lot of stakeholders including: Cuyuna Lakes Region, Mountain Biking Community, etc.



# Short Term Goals

- \* Continue to Advance Discussion with All Stakeholders
- \* A Multi-Year Work in Progress, Subject to Rapid Change
- \* Focus on Understanding Multiple Opportunities for Cuyuna Range
  - \* Modern Mining
  - \* Recreation
  - \* Historical Perspective