

December
2020

Air Traffic Statistics



Prepared by the Office of Marketing & Consumer Strategy



Air Traffic Summary December 2020

		Passenger Activity (in Millions)									
		Current Month			Year-to-Date			Last 12 Months			
		DCA	IAD	System	DCA	IAD	System	DCA	IAD	System	
Commercial Passengers	Dom	Passengers	0.4	0.5	0.9	7.5	6.2	13.7	7.5	6.2	13.7
		% Change	(80.1%)	(62.0%)	(72.6%)	(68.2%)	(62.0%)	(65.7%)	(68.2%)	(62.0%)	(65.7%)
	Int'l	Passengers	< 0.1	0.2	0.2	0.1	2.0	2.1	0.1	2.0	2.1
		% Change	(92.1%)	(74.2%)	(74.9%)	(81.5%)	(76.0%)	(76.2%)	(81.5%)	(76.0%)	(76.2%)
	Total	Passengers	0.4	0.7	1.1	7.6	8.2	15.8	7.6	8.2	15.8
		% Change	(80.3%)	(66.0%)	(73.0%)	(68.4%)	(66.7%)	(67.6%)	(68.4%)	(66.7%)	(67.4%)
Total Passengers*	Passengers	0.4	0.7	1.1	7.6	8.3	15.9	7.6	8.3	15.9	
	% Change	(80.2%)	(65.7%)	(72.8%)	(68.4%)	(66.4%)	(67.4%)	(68.4%)	(66.4%)	(67.4%)	

*Note: Includes General Aviation & Military. Totals may not add up due to rounding.

		Dulles Cargo (in Metric Tons)								
		Current Month			Year-to-Date			Last 12 Months		
		Domestic	International	System	Domestic	International	System	Domestic	International	System
Total Cargo	Cargo	10.2	9.2	19.4	102.9	95.1	198.0	102.9	95.1	198.0
	% Change	10.7%	(32.3%)	(14.9%)	(1.4%)	(43.8%)	(27.6%)	(1.4%)	(43.8%)	(27.6%)

Ronald Reagan Washington National Airport

- Domestic commercial passenger activity decreased 80.1% compared to December 2019. **Decline is primarily driven by the drop in demand related to the ongoing COVID-19 pandemic.** Significant activity by carrier is as follows:

Airline	Comments
American	• 81.3% decrease in passenger activity primarily due to lower demand
Southwest	• 83.4% decrease in passenger activity primarily due to lower demand
Alaska	• 80.0% decrease in passenger activity primarily due to lower demand
United	• 80.6% decrease in passenger activity primarily due to lower demand
JetBlue	• 77.4% decrease in passenger activity primarily due to lower demand
Delta	• 76.7% decrease in passenger activity primarily due to lower demand
Frontier	• 51.1% decrease in passenger activity primarily due to lower demand

- Transborder passenger traffic decreased 92.1% from a year ago as a result of a decrease by Air Canada and American
- American, including its regional affiliates, had the largest commercial passenger market share of 47.7% compared to 50.2% in December 2019

Washington Dulles International Airport

Domestic Passenger Activity

- Domestic commercial passenger activity decreased 62.0% compared to December 2019. **Decline is primarily driven by the drop in demand related to the ongoing COVID-19 pandemic.** Significant activity by carrier is as follows:

Airline	Comments
United	• 59.5% decrease in passenger activity primarily due to lower demand
Delta	• 69.4% decrease in passenger activity primarily due to lower demand
American	• 74.6% decrease in passenger activity primarily due to lower demand
Southwest	• 60.7% decrease in passenger activity primarily due to lower demand
Alaska	• 88.9% decrease in passenger activity primarily due to lower demand

International Passenger Activity

- International commercial passenger traffic decreased 74.2% compared to December 2019. Significant activity by carrier is as follows:

Airline	Comments
United	• 70.9% decrease primarily due to reduction of service and lower demand
Lufthansa	• 82.1% decrease due to lower load factors and reduction of service
British Airways	• 85.5% decrease due to lower load factors and reduction of service
Air France	• 84.4% decrease due to lower load factors and reduction of service
Avianca	• 64.1% decrease due to lower load factors and reduction of service
Air China	• 100.0% decrease due to suspension of service
Korean Air	• 86.9% decrease due to lower load factors and reduction of service
Ethiopian	• 24.4% decrease due to lower demand and reduction of service
Turkish	• 45.2% decrease due to lower demand and reduction of service

- United Airlines, including its regional affiliates, had the largest commercial passenger market share of 75.5% compared to 66.7% a year ago

Cargo Activity (all numbers in metric tons)

- Total cargo decreased 14.9% or (3,403) from a year ago to 19,437k
- Domestic cargo increased 10.7% (984) primarily due to FedEx (30.8%, or 1,746)
- International cargo decreased 32.3% (4,388) due to decreases by among others: United (32.4%, or 1,577), Lufthansa (59.5%, or 531), Air France (40.1%, or 289), and KLM (43.6%, or 234)

Ronald Reagan Washington National Airport

Air Traffic Schedule Activity

December 2020 vs. December 2019

December 2020:	Daily Departures	Airlines	Unduplicated Destinations
Domestic Passenger service information -			
Mainline	98	7	--
Regional Affiliate	<u>36</u>	<u>8</u>	--
Domestic Total	134	15	52
Transborder/International Passenger service information -			
Mainline	1	2	--
Regional Affiliate	<u>0</u>	<u>1</u>	--
Transborder/International Total	1	3	2

December 2019:	Daily Departures	Airlines*	Unduplicated Destinations
Domestic Passenger service information -			
Mainline	377	7	--
Regional Affiliate	<u>190</u>	<u>10</u>	--
Domestic Total	567	17	87
Transborder/International Passenger service information -			
Mainline	10	3	--
Regional Affiliate	<u>2</u>	<u>2</u>	--
Transborder/International Total	12	5	4

* The following airlines are counted as one airline:
 Alaska and Virgin America
 Regional carriers flying for multiple mainline carriers

Source: Diio Mi, February 2, 2021

Washington Dulles International Airport

Air Traffic Schedule Activity

December 2020 vs. December 2019

December 2020:	Daily Departures	Airlines*	Unduplicated Destinations
Domestic Passenger service information -			
Mainline	149	6	--
Regional Affiliate	<u>96</u>	<u>7</u>	--
Domestic Total	245	13	83
Transborder/International Passenger service information -			
Mainline	27	23	--
Regional Affiliate	<u>2</u>	<u>1</u>	--
Transborder/International Total	29	24	40

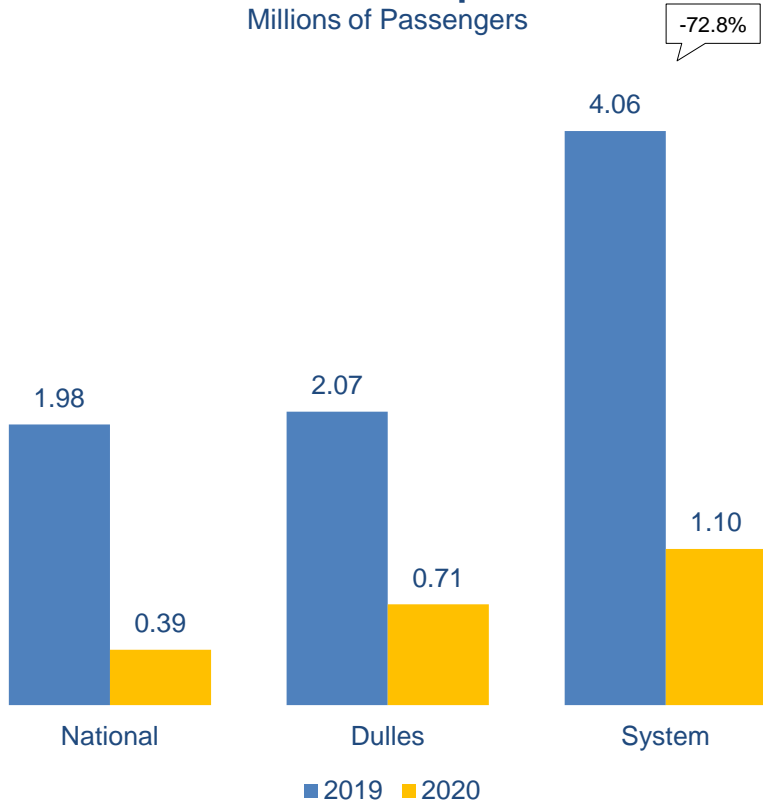
December 2019:	Daily Departures	Airlines*	Unduplicated Destinations
Domestic Passenger service information -			
Mainline	251	6	--
Regional Affiliate	<u>150</u>	<u>8</u>	--
Domestic Total	401	14	83
Transborder/International Passenger service information -			
Mainline	63	33	--
Regional Affiliate	<u>8</u>	<u>3</u>	--
Transborder/International Total	71	36	51

* The following airlines are counted as one airline:
Alaska and Virgin America
Regional carriers flying for multiple mainline carriers

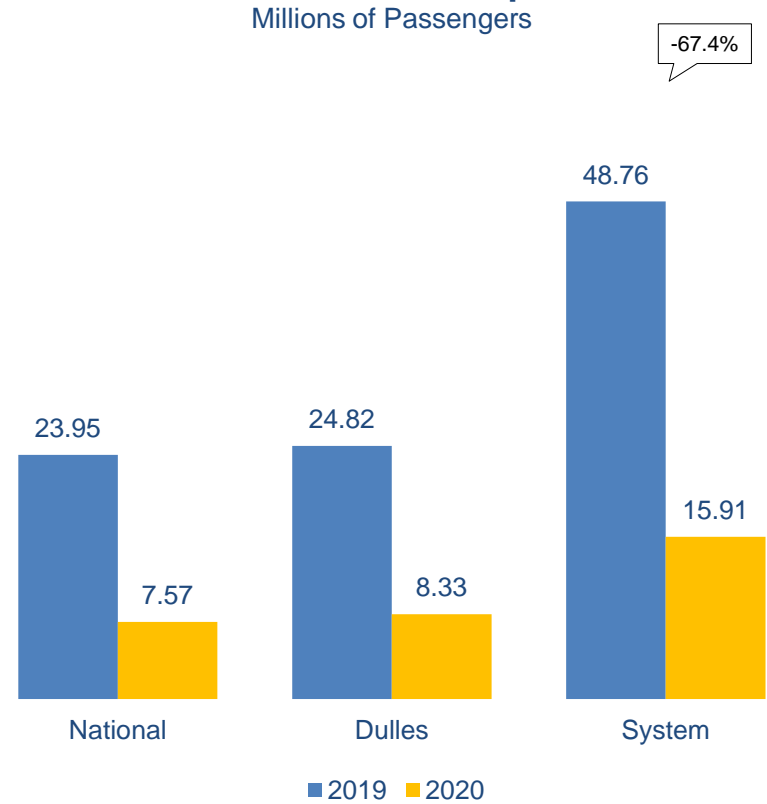
Source: Diio Mi, February 2, 2021

Passenger Trends

December Comparison
Millions of Passengers



Last 12-Months Comparison
Millions of Passengers

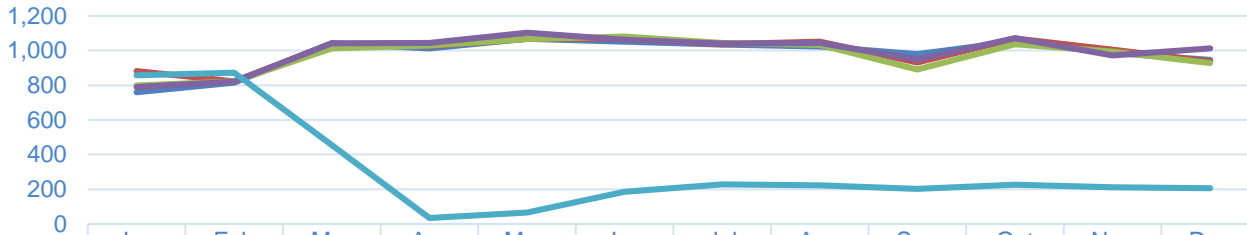


Note: Totals may not add due to rounding



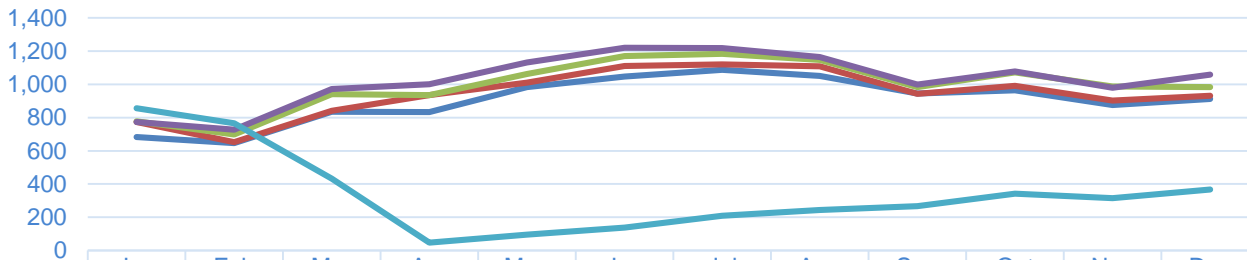
Total Commercial Passenger Enplanements Trends Calendar Years 2016 - 2020

Reagan National



	Jan	Feb	Mar	Apr	May	Jun	Jul	Aug	Sep	Oct	Nov	Dec
2016	760	815	1,042	1,012	1,068	1,051	1,035	1,023	979	1,053	986	945
2017	881	823	1,038	1,026	1,067	1,067	1,037	1,051	932	1,070	1,005	936
2018	798	822	1,012	1,030	1,065	1,081	1,044	1,033	891	1,037	993	928
2019	790	821	1,042	1,044	1,103	1,062	1,040	1,043	948	1,072	971	1,013
2020	858	872	456	35	67	185	228	222	202	226	211	206

Dulles International

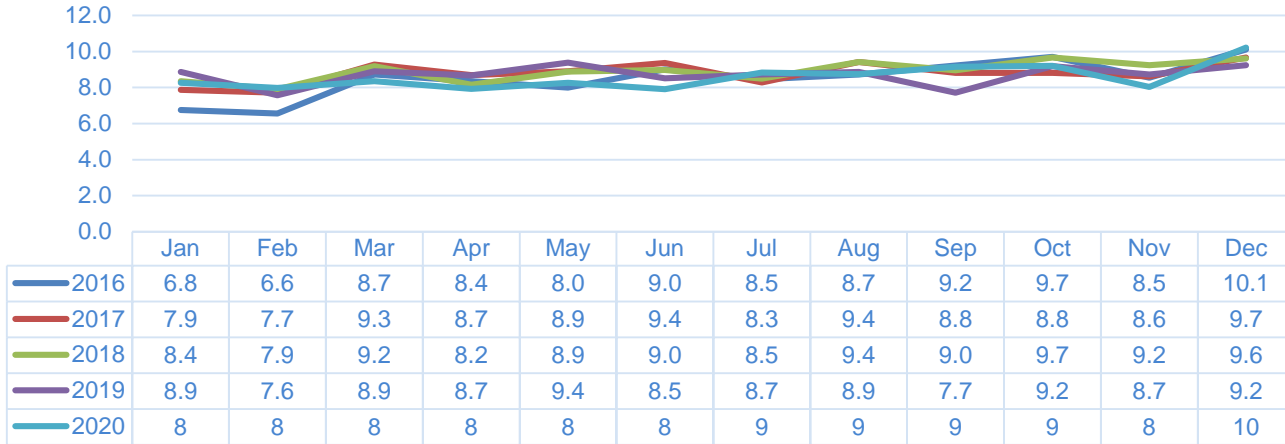


	Jan	Feb	Mar	Apr	May	Jun	Jul	Aug	Sep	Oct	Nov	Dec
2016	684	647	836	834	984	1,048	1,088	1,051	946	964	875	913
2017	773	652	842	936	1,011	1,111	1,121	1,108	944	992	903	932
2018	777	698	942	936	1,064	1,171	1,185	1,148	983	1,073	987	984
2019	774	728	972	1,000	1,133	1,221	1,219	1,165	998	1,078	980	1,060
2020	857	766	434	48	95	138	210	244	268	342	314	367

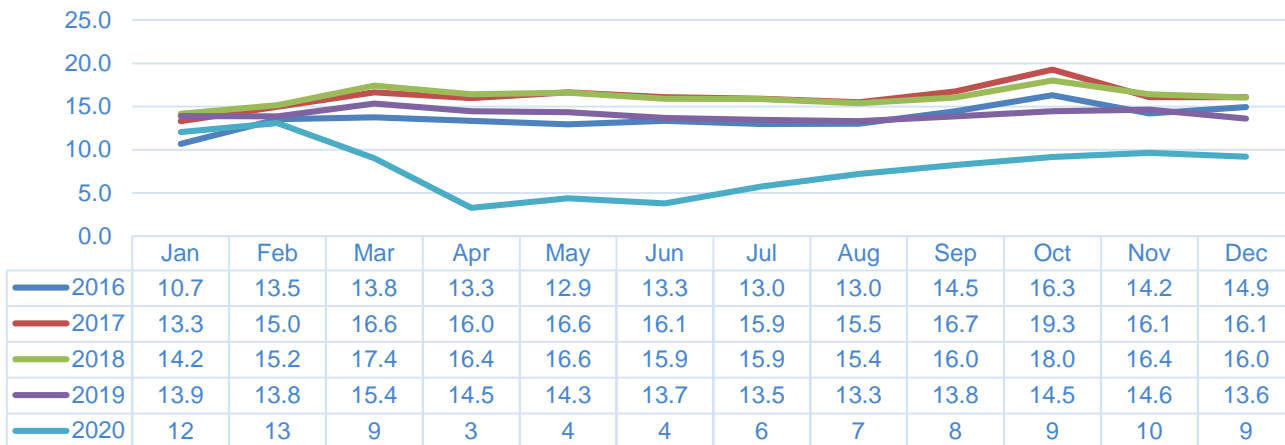


Total Cargo Weight Trends Calendar Years 2016 - 2020

Domestic Dulles Cargo



International Dulles Cargo



Metropolitan Washington Airports Authority
Ronald Reagan Washington National Airport
Monthly Air Traffic Summary Report
December 2020

Description	Enplaned	Deplaned	Total	Year Ago	% Change
Aircraft Operations					
Commercial:					
Air Carrier:					
Domestic			3,818	12,392	-69.2
International			0	0	0.0
Transborder			0	8	-100.0
Total - Air Carrier			3,818	12,400	-69.2
Regional:					
Domestic			2,191	10,576	-79.3
International			78	0	100.0
Transborder			0	602	-100.0
Total - Regional			2,269	11,178	-79.7
Commercial:					
Domestic			6,009	22,968	-73.8
International			78	610	-87.2
Total - Commercial			6,087	23,578	-74.2
Non-Commercial:					
General Aviation			110	211	-47.9
Military			119	192	-38.0
Total - Non-Commercial			229	403	-43.2
Grand Total - Aircraft Operations			6,316	23,981	-73.7
Passengers					
Commercial:					
Air Carrier: Domestic					
Scheduled:	164,810	147,849	312,659	1,419,977	-78.0
Chartered:	113	112	225	0	100.0
Total - Domestic Air Carrier	164,923	147,961	312,884	1,419,977	-78.0
Air Carrier: International					
Scheduled:	0	0	0	0	0.0
Chartered:	0	0	0	0	0.0
Total - International Air Carrier	0	0	0	0	0.0
Air Carrier: Transborder					
Scheduled:	0	0	0	647	-100.0
Chartered:	0	0	0	0	0.0
Total - Transborder Air Carrier	0	0	0	647	-100.0
Total - Air Carrier	164,923	147,961	312,884	1,420,624	-78.0
Regional:					
Domestic:	39,598	36,453	76,051	534,171	-85.8
International:	1,202	1,009	2,211	0	100.0
Transborder:	0	0	0	27,270	-100.0
Total - Regional	40,800	37,462	78,262	561,441	-86.1
Commercial:					
Domestic	204,521	184,414	388,935	1,954,148	-80.1
International	1,202	1,009	2,211	27,917	-92.1
Total - Commercial	205,723	185,423	391,146	1,982,065	-80.3
Non-Commercial:					
General Aviation	160	160	320	1,147	-72.1
Military	308	308	616	575	7.1
Total - Non-Commercial	468	468	936	1,722	-45.6
Grand Total - Passengers	206,191	185,891	392,082	1,983,787	-80.2

Cargo - Tonnes

**Metropolitan Washington Airports Authority
Ronald Reagan Washington National Airport
Monthly Air Traffic Summary Report
December 2020**

Description	Enplaned	Deplaned	Total	Year Ago	% Change
Mail:					
Domestic	23	0	23	16	44.5
Total - Mail:	23	0	23	16	44.5
Freight and Express:					
Domestic	24	47	70	111	-36.6
Total - Freight and Express:	24	47	70	111	-36.6
Mail Plus Freight + Express:					
Domestic	47	47	93	127	-26.8
International	0	0	0	0	0.0
Transborder	0	0	0	0	0.0
Grand Total - Cargo	47	47	94	127	-26.0

NOTE: Figures may not sum to total due to rounding.

Metropolitan Washington Airports Authority
Ronald Reagan Washington National Airport
Monthly Air Traffic Summary Report
January 2020 - December 2020

Description	Enplaned	Deplaned	Total	Year Ago	% Change
Aircraft Operations					
Commercial:					
Air Carrier:					
Domestic			73,109	145,864	-49.9
International			24	0	100.0
Transborder			0	226	-100.0
Total - Air Carrier			73,133	146,090	-49.9
Regional:					
Domestic			52,593	133,953	-60.7
International			1,931	7	27485.7
Transborder			0	6,976	-100.0
Total - Regional			54,524	140,936	-61.3
Commercial:					
Domestic			125,702	279,817	-55.1
International			1,955	7,209	-72.9
Total - Commercial			127,657	287,026	-55.5
Non-Commercial:					
General Aviation			1,778	2,807	-36.7
Military			1,864	2,855	-34.7
Total - Non-Commercial			3,642	5,662	-35.7
Grand Total - Aircraft Operations			131,299	292,688	-55.1
Passengers					
Commercial:					
Air Carrier: Domestic					
Scheduled:	2,768,118	2,792,158	5,560,276	16,775,416	-66.9
Chartered:	620	627	1,247	14,519	-91.4
Total - Domestic Air Carrier	2,768,738	2,792,785	5,561,523	16,789,935	-66.9
Air Carrier: International					
Scheduled:	735	660	1,395	0	100.0
Chartered:	0	0	0	0	0.0
Total - International Air Carrier	735	660	1,395	0	100.0
Air Carrier: Transborder					
Scheduled:	0	0	0	24,725	-100.0
Chartered:	0	0	0	0	0.0
Total - Transborder Air Carrier	0	0	0	24,725	-100.0
Total - Air Carrier	2,769,473	2,793,445	5,562,918	16,814,660	-66.9
Regional:					
Domestic:	965,173	962,414	1,927,587	6,754,637	-71.5
International:	32,891	34,009	66,900	2,681	2395.3
Transborder:	0	0	0	341,381	-100.0
Total - Regional	998,064	996,423	1,994,487	7,098,699	-71.9
Commercial:					
Domestic	3,733,911	3,755,199	7,489,110	23,544,572	-68.2
International	33,626	34,669	68,295	368,787	-81.5
Total - Commercial	3,767,537	3,789,868	7,557,405	23,913,359	-68.4
Non-Commercial:					
General Aviation	4,140	4,049	8,189	22,288	-63.3
Military	4,670	4,702	9,372	9,880	-5.1
Total - Non-Commercial	8,810	8,751	17,561	32,168	-45.4
Grand Total - Passengers	3,776,347	3,798,619	7,574,966	23,945,527	-68.4

Cargo - Tonnes

**Metropolitan Washington Airports Authority
Ronald Reagan Washington National Airport
Monthly Air Traffic Summary Report
January 2020 - December 2020**

Description	Enplaned	Deplaned	Total	Year Ago	% Change
Mail:					
Domestic	230	2	232	291	-20.4
Total - Mail:	230	2	232	291	-20.4
Freight and Express:					
Domestic	473	621	1,094	1,887	-42.0
Total - Freight and Express:	473	621	1,094	1,887	-42.0
Mail Plus Freight + Express:					
Domestic	703	623	1,326	2,178	-39.1
International	0	0	0	0	0.0
Transborder	0	0	0	0	0.0
Grand Total - Cargo	703	623	1,326	2,178	-39.1

NOTE: Figures may not sum to total due to rounding.

Metropolitan Washington Airports Authority
Washington Dulles International Airport
Monthly Air Traffic Summary Report
December 2020

Description	Enplaned	Deplaned	Total	Year Ago	% Change
Aircraft Operations					
Commercial:					
Air Carrier:					
Domestic			3,661	6,729	-45.6
International			1,723	3,094	-44.3
Transborder			0	0	0.0
Total - Air Carrier			5,384	9,823	-45.2
Regional:					
Domestic			5,903	9,743	-39.4
International			160	698	-77.1
Transborder			0	0	0.0
Total - Regional			6,063	10,441	-41.9
Commercial:					
Domestic			9,564	16,472	-41.9
International			1,883	3,792	-50.3
Total - Commercial			11,447	20,264	-43.5
Non-Commercial:					
General Aviation			1,559	2,656	-41.3
Military			16	21	-23.8
Total - Non-Commercial			1,575	2,677	-41.2
Grand Total - Aircraft Operations			13,022	22,941	-43.2
Passengers					
Commercial:					
Air Carrier: Domestic					
Scheduled:	154,657	143,041	297,698	897,463	-66.8
Chartered:	0	0	0	1,029	-100.0
Total - Domestic Air Carrier	154,657	143,041	297,698	898,492	-66.9
Air Carrier: International					
Scheduled:	97,477	69,088	166,565	633,070	-73.7
Chartered:	475	635	1,110	1,571	-29.3
Total - International Air Carrier	97,952	69,723	167,675	634,641	-73.6
Air Carrier: Transborder					
Scheduled:	0	0	0	0	0.0
Chartered:	0	0	0	0	0.0
Total - Transborder Air Carrier	0	0	0	0	0.0
Total - Air Carrier	252,609	212,764	465,373	1,533,133	-69.6
Regional:					
Domestic:	111,590	118,430	230,020	491,570	-53.2
International:	3,059	3,731	6,790	40,287	-83.1
Transborder:	0	0	0	0	0.0
Total - Regional	114,649	122,161	236,810	531,857	-55.5
Commercial:					
Domestic	266,247	261,471	527,718	1,390,062	-62.0
International	101,011	73,454	174,465	674,928	-74.2
Total - Commercial	367,258	334,925	702,183	2,064,990	-66.0
Non-Commercial:					
General Aviation	4,822	5,075	9,897	8,993	10.1
Military	0	0	0	11	-100.0
Total - Non-Commercial	4,822	5,075	9,897	9,004	9.9
Grand Total - Passengers	372,080	340,000	712,080	2,073,994	-65.7

Cargo - Tonnes

Metropolitan Washington Airports Authority
Washington Dulles International Airport
Monthly Air Traffic Summary Report
December 2020

Description	Enplaned	Deplaned	Total	Year Ago	% Change
Mail:					
Domestic	115	396	511	870	-41.3
International	183	146	329	373	-11.8
Total - Mail:	299	541	840	1,243	-32.4
Freight and Express:					
Domestic	3,901	5,808	9,709	8,366	16.1
International	3,014	5,872	8,885	13,228	-32.8
Total - Freight and Express:	6,915	11,679	18,594	21,594	-13.9
Mail Plus Freight + Express:					
Domestic	4,017	6,203	10,220	9,236	10.7
International	3,197	6,017	9,214	13,601	-32.3
Transborder	0	0	0	0	0.0
Grand Total - Cargo	7,214	12,220	19,434	22,837	-14.9

NOTE: Figures may not sum to total due to rounding.

Metropolitan Washington Airports Authority
Washington Dulles International Airport
Monthly Air Traffic Summary Report
January 2020 - December 2020

Description	Enplaned	Deplaned	Total	Year Ago	% Change
Aircraft Operations					
Commercial:					
Air Carrier:					
Domestic			41,742	78,523	-46.8
International			15,413	38,974	-60.5
Transborder			0	0	0.0
Total - Air Carrier			57,155	117,497	-51.4
Regional:					
Domestic			72,717	125,894	-42.2
International			1,990	10,652	-81.3
Transborder			0	0	0.0
Total - Regional			74,707	136,546	-45.3
Commercial:					
Domestic			114,459	204,417	-44.0
International			17,403	49,626	-64.9
Total - Commercial			131,862	254,043	-48.1
Non-Commercial:					
General Aviation			19,229	33,939	-43.3
Military			381	382	-0.3
Total - Non-Commercial			19,610	34,321	-42.9
Grand Total - Aircraft Operations			151,472	288,364	-47.5
Passengers					
Commercial:					
Air Carrier: Domestic					
Scheduled:	1,763,065	1,777,565	3,540,630	10,483,419	-66.2
Chartered:	954	948	1,902	7,714	-75.3
Total - Domestic Air Carrier	1,764,019	1,778,513	3,542,532	10,491,133	-66.2
Air Carrier: International					
Scheduled:	939,983	974,832	1,914,815	7,744,604	-75.3
Chartered:	6,029	6,438	12,467	24,535	-49.2
Total - International Air Carrier	946,012	981,270	1,927,282	7,769,139	-75.2
Air Carrier: Transborder					
Scheduled:	0	0	0	0	0.0
Chartered:	0	0	0	0	0.0
Total - Transborder Air Carrier	0	0	0	0	0.0
Total - Air Carrier	2,710,031	2,759,783	5,469,814	18,260,272	-70.0
Regional:					
Domestic:	1,331,415	1,327,156	2,658,571	5,833,857	-54.4
International:	41,991	39,239	81,230	592,107	-86.3
Transborder:	0	0	0	0	0.0
Total - Regional	1,373,406	1,366,395	2,739,801	6,425,964	-57.4
Commercial:					
Domestic	3,095,434	3,105,669	6,201,103	16,324,990	-62.0
International	988,003	1,020,509	2,008,512	8,361,246	-76.0
Total - Commercial	4,083,437	4,126,178	8,209,615	24,686,236	-66.7
Non-Commercial:					
General Aviation	55,658	66,858	122,516	131,043	-6.5
Military	701	628	1,329	398	233.9
Total - Non-Commercial	56,359	67,486	123,845	131,441	-5.8
Grand Total - Passengers	4,139,796	4,193,664	8,333,460	24,817,677	-66.4

Cargo - Tonnes

Metropolitan Washington Airports Authority
Washington Dulles International Airport
Monthly Air Traffic Summary Report
January 2020 - December 2020

Description	Enplaned	Deplaned	Total	Year Ago	% Change
Mail:					
Domestic	2,309	4,037	6,347	7,592	-16.4
International	1,373	1,570	2,943	4,086	-28.0
Total - Mail:	3,683	5,608	9,290	11,678	-20.4
Freight and Express:					
Domestic	41,281	55,253	96,534	96,764	-0.2
International	33,807	58,285	92,092	164,943	-44.2
Total - Freight and Express:	75,088	113,538	188,626	261,707	-27.9
Mail Plus Freight + Express:					
Domestic	43,590	59,291	102,881	104,356	-1.4
International	35,181	59,855	95,036	169,029	-43.8
Transborder	0	0	0	0	0.0
Grand Total - Cargo	78,771	119,146	197,917	273,385	-27.6

NOTE: Figures may not sum to total due to rounding.