

Jerzy PRÓSZYŃSKI

**Systematic studies on East Palaearctic *Salticidae*,  
III. Remarks on *Salticidae* of the USSR.**

[With 324 text-figures]

One of the difficulties in understanding of the distributional pattern of the Palaearctic *Salticidae* is an incomplete information on fauna of eastern parts of the USSR — Siberia, Amur Valley, Primore, Okhock Sea area. Owing to the exchange of scientists system of the Polish Academy of Sciences and the Academy of Sciences of the USSR, I had the opportunity to study rich collections of *Salticidae* kept in the Institute of Zoology of the Academy of Sciences of the USSR in Leningrad (ZIN). These studies appeared very fruitful and instructive, especially when I have supplemented them by study of various specimens from the collections of the Institute of Zoology of the Polish Academy of Sciences in Warsaw (IZPAN), Zoological Museum of the Wrocław University, as well as from the collections of Dr. E. M. ANDREEVA and the late Professor D. E. CHARITONOV.

The arachnological collection in the ZIN consists of various materials accumulated during the last century. The most interesting for me Siberian and Amur-Primore area collection of *Salticidae* consists of specimens brought by various expeditions and individual collectors; among the most important I can mention the following: SCHRENCK, MAACK and DITTMAR (part of the GRUBE's collection), A. CZEKANOWSKI (1874-1875), N. PALCZEWSKI (1891, 19003, 1906), P. SCHMIDT (1902), P. V. OLENIN (1903), V. K. SOLDATOV (1907-1915), A. CZERSKI (1908), W. ŁUKASZEWICZ (1910), I. KUZNETSOV (1911, 19113), V. CHERNOVA (1915), I. PAVLENKO (1915), I. PETROV (1915), M. I. VALDAYEV (1917), A. DYAKONOV and N. FILIPEV (1925), A. EMELIANOV (1925),

N. V. NASONOV (1926), M. I. TKACHENKO (1926), A. V. BIANKI (1926), A. GRIGORIEV (1926), SOKOLOV (1927), A. MARTINOV, C. RIBO, A. SHTAKELBERG und I. SOLDATOV (1927), A. KIRICHENKO (1929). I. A. RUBCOV (1934), B. KOSHKIN (1935), A. A. RICHTER (1937), MUKHINA (1965), V. M. ALEKSEEV (1965)<sup>1</sup>. The collection of particular importance appeared large collection made in 1968 by F. E. POPOV in Primore. Apart from the above mentioned unidentified collections, there is a part of D. E. CHARITONOV (mainly from European part of the USSR and some from Central Asia) and S. A. SPASSKY (southern European part of the USSR) identified collections.

#### ACKNOWLEDGEMENTS

The success of my research in Leningrad is largely due to the kind hospitality and keen assistance of the staff members of the Institute of Zoology there. Being very grateful to all, I wish to extend especially warm thanks to Dr. G. S. MEDVEDEV and Dr. L. A. ZHILCOVA as well as to E. A. TUTUYEVA of the Laboratory of Entomology. I have also benefited from the expert advice of Dr. V. P. TYSTSCHENKO, of the Leningrad University. My thanks are also due to Mrs. A. A. PERVUKHINA, the widow of the late Professor D. E. CHARITONOV, for lending me type specimens from the CHARITONOV collection.

My very special thanks are due to Dr. E. M. ANDREEVA for very effective cooperation on Central Asiatic *Salticidae* and numerous useful advice. I have also discussed various problems with my collaborators — Mrs. W. WESOLOWSKA and Mrs. S. HĘCIAK, as well as Mr. A. BOHDANOWICZ. I am also grateful to Mrs. Mrs. E. FLANCZEWSKA, L. KOT and A. SZUMIŃSKA, who have helped me in drawing illustrations in India ink, their works is marked by abbreviations F., LK. and Sz. respectively throughout the paper.

\*        \*  
\*  
\*  
\*

The present paper is just a preliminary report on systematic problems of *Salticidae* of the USSR, which leaves plenty of room for further research. The list of species found in the collections is annotated with various remarks, but the most important are drawings attached to remarks on particular species. These give documentation to identification, which is useful in a case of rare and doubtful species, but they will also help other students of *Salticidae* of that area to identify their collections. The descriptions are unfortunately

<sup>1</sup> The transliteration of names of collectors written on labels mainly in Russian characters presents difficult problems, especially that some collectors could use their names transliterated into Latin alphabet following rules of various languages, especially German, French or Polish. The author apologizes for possible errors in transliterations given above.

very short and will have to be complemented by future comparative and biological studies.

Apart from the Siberian species I give remarks on some European or Central Asiatic species whenever these may complement other studies of mine, published already or not.

The preliminary character of this paper does not allow to elaborate the most important conclusion drawn from these research — the general distributional pattern of Palaearctic *Salticidae*, and especially the disjunctive areals of numerous species. There are no comments in the arachnological literature on the disjunctive occurrence of many spiders in the Far East (Primore and the Amur Valley in the USSR, also Korea and Japan) and in the South Europe. It appears now that a number of *Salticidae* does occur in these areas, being absent from the intervening space, some are represented there by very closely related species. It seems that studies of these problems could give us a deeper insight into evolution and history of the Palaearctic *Salticidae*.

The following lists summarize new facts given in this paper.

#### New taxa described:

- Dendryphantes biankii* sp. n. — from Yakutia and Mongolia;  
*Dendryphantes czekanowskii* sp. n. — Yakutia;  
*Icius popovi* sp. n. — Primore;  
*Synageles scutiger* sp. n. — Southern European USSR;  
*Synagelides zhilcova* sp. n. — Primore;  
*Yaginumaella medvedevi* sp. n. — Primore.

#### Unknown ♀♀ described:

- Icius difficilis* (BÖSENBERG et STRAND, 1906);  
*Marpissa nobilis* (GRUBE, 1861);  
*Sitticus albolineatus* (KULCZYŃSKI, 1895);  
*Yaginumaella striatipes* (GRUBE, 1861).

#### New synonyms:

- Dendryphantes thorelli* KULCZYŃSKI, 1895 = *Dendryphantes fusconotatus* (GRUBE, 1861).  
*Menemerus parietinus* SPASSKY, 1934 = *Menemerus taeniatus* (L. KOCH, 1876).

#### Species new for the USSR:

- Icius abnormis* (BÖSENBERG et STRAND, 1906) — Primore;  
*Icius difficilis* (BÖSENBERG et STRAND, 1906) — Primore;  
*Sitticus fasciger* (SIMON, 1880) — Primore;  
*Synagelides agoriformis* STRAND in BÖSENBERG et STRAND, 1906 — Primore.

## Species new for other countries:

- Dendryphantes fusconotatus* (GRUBE, 1861) — Mongolia  
*Philaeus chrysops* (PODA, 1761) — Japan.

## Species new for various regions of the USSR:

- Aelurillus festivus* (C. L. KOCH, 1834) — Yakutia;  
*Aelurillus v-insignitus* (CLERCK, 1758) — Yakutia;  
*Bianor aurocinctus* (OHLERT, 1865) — Yakutia;  
*Dendryphantes atratus* (KARSCH, 1881) — Primore;  
*Dendryphantes hastatus* (CLERCK, 1758) — Krasnoyarsk area;  
*Dendryphantes rudis* (SUNDEVALL, 1832) — Yakutia;  
*Evarcha arcuata* (CLERCK, 1785) — Yakutia;  
*Evarcha falcata* (CLERCK, 1758) — Primore;  
*Heliophanus auratus* C. L. KOCH, 1848 — Baikal Lake area, Yakutia;  
*Heliophanus baicalensis* KULCZYŃSKI, 1895 — Primore;  
*Heliophanus camtschadalicus* KULCZYŃSKI, 1895 — Primore;  
*Heliophanus dampfi* SCHENKEL, 1923 — Leningrad area;  
*Heliophanus lineiventris* SIMON, 1868 — Primore;  
*Marpissa pomatia* (WALCKENAER, 1802) — Primore;  
*Myrmarachne formicaria* (DE GEER, 1778) — Primore;  
*Neon reticulatus* (BLACKWALL, 1853) — Primore;  
*Pellenes ignifrons* (GRUBE, 1861) — Yakutia;  
*Pellenes tripunctatus* (WALCKENAER, 1802) — Yakutia;  
*Philaeus chrysops* (PODA, 1761) — Primore;  
*Phlegra fasciata* (HAHN, 1826) — Primore;  
*Salticus cingulatus* (PANZER, 1797) — Yakutia;  
*Sitticus albolineatus* (KULCZYŃSKI, 1895) — Primore;  
*Sitticus caricis* (WESTRING, 1871) — Primore;  
*Sitticus floricola* (C. L. KOCH, 1837) — Yakutia;  
*Sitticus viduus* (KULCZYŃSKI, 1895) — Primore;  
*Synageles hilarulus* (C. L. KOCH, 1846) — Primore;  
*Synageles venator* (LUCAS, 1836) — Primore.

## TAXONOMIC SURVEY OF SPECIES

1. *Aelurillus festivus* (C. L. KOCH, 1834).

Primore: Lake Hanka — 2 ♀♀, 5 ♂♂; Vladivostok — 1 ♀; Kangauz — 3 ♀♀, 1 ♂; village Slovianka — 1 ♀; Okhoek Sea region: village Chenga — 3 ♀♀, 5 ♂♂, 8 juv.; Yakutia: left bank of the Lena River between villages Zekhina and Skoknina — 1 ♀; near Cherkuskaya — 1 ♂; river Amga — 1 ♂ (ZIN). **New for Yakutia.**

2. *Aelurillus lutosus* (TYSTSCHENKO, 1965), **comb. n.**

*Melioranus lutosus* TYSTSCHENKO, 1965.

Kazakhstan: Kokshetau (Celinograd area, formerly Akmolinsk) — 1 ♀, holotype (ZIN).

The change of combination was approved by Dr. V. P. TYSTSCHENKO. The shape of epigynum is shown in fig. 1.

3. *Aelurillus m-nigrum* (KULCZYŃSKI in CHYZER et KULCZYŃSKI, 1891).

Southern European part of the USSR — Lower Don area — 1 ♀, 1 ♂, det. SPASSKY (ZIN).

The details of the copulatory organ of ♂ are given in figs. 2–5, that of ♀ in figs. 6–7.

4. *Aelurillus* sp.

Turkmenia: Murgab area, on cotton field, 1 ♂, leg. K. KAMALOV.

The species is easily recognizable by white triangle on the frontal surface of the head (fig. 8). The palpal structure is similar to other species of the genus and shown in figs. 9–10. I am not certain of the systematic position of the species.

5. *Aelurillus tartaricus* (CHARITONOV, 1946).

*Phlegra tartarica* CHARITONOV, 1946.

Uzbekistan: Shakhriydsa, 1–31 III 1942, leg. D. M. FEDOTOV — 1 ♂, 1 ♀ (syntypes). Coll. D. E. CHARITONOV.

I agree with ANDREEVA (in print) that this species is apparently an *Aelurillus*. Its structure of bulb and embolus is typical for the genus, although the shape of tibial apophysis is rather unusual. A special feature of this species is a bunch of hard and thick spines close to apophysis, which could be mistaken for a second apophysis during casual examination. The structure of the copulatory organ of ♂ is shown in figs. 11–13, the microscopic slide of epigynum, made by Professor D. E. CHARITONOV himself in fig. 14.

6. *Aelurillus v-insignitus* (CLERCK, 1758).

East Siberia: Viluy river area, between Sordonchiakh and Bagardzha Lakes — 1 ♂ (ZIN)

This is the first specimen of the species, reported east from the Ural Mts.

7. *Bianor aurocinctus* (OHLERT, 1865).

Primorie: Kangauz — 2 ♀♀ (ZIN).

Known heretofore from Irkutsk area and from Europe, occurs also in

Korea (WESOŁOWSKA, in press). The structure of epigynum is shown in figs 15-16.

8. *Carrhotus xanthogramma* (LATREILLE, 1819),

*Carrhotus bicolor* (WALCKENAER, 1802).

Primorie and Amur area: numerous specimens from Nature Protection Reserve Kedrovaya Pad, and river Kedrovka; Lake Hanka area; Kangauz; various localities along Amur River. Also village Malvinskoye near Okhock Sea (ZIN).

The shape of epigynum is shown in fig. 17.

Genus *Dendryphantes* C. L. KOCH, 1837.

The genus contains numerous species in Palaerctic and Nearctic Regions. The differences between the species are inconspicuous and difficult to assess, the intraspecific variation appears to be quite wide. The external structure of epigynum is rather misleading and only its internal parts could give some clue as to the position of particular species, they are, however, heavily sclerotized and inconvenient for study. The outline of the copulatory organs in males are quite uniform, and the only better character is supplied by the structure of embolus and conductor, but differences are not very conspicuous. North American species are particularly poorly known and one may expect at least several species mutual for North America and Eurasia; while resemblances in drawings of some species are quite striking, the relationships of the respective species is not proved yet. All remarks on *Dendryphantes* should be considered provisional until revision of the whole genus will help to clarify these problems.

9. *Dendryphantes atratus* (KARSCH, 1881).

Primore: Lake Hanka and the river Kedrovka - 4 ♀♀, 2 ♂♂ (ZIN).

Known heretofore from Japan (PRÓSZYŃSKI 1973: 102-104, ff. 15-22). The ♂ palpus (figs. 18-23) matches the above mentioned drawings quite well, the females differ, however, by having much narrower copulatory canals and spermathecae (figs. 24-25). The posterior edge of epigynum is not carved (figs. 24, 26-27). These differences call for some caution and more studies on fresh material.

10. *Dendryphantes biankii* sp. n.

Yakutia: 1 ♀ (holotype) - No. 46-926, stream Ongkuchakh, confluent of River Manda, Yakutsk area, 17. VII. 1925, leg. A. BIANKI (ZIN); Mongolia: 1 ♀ - Ubulan, 50 km SE from Ulan Bator, 9. VI. 1962, leg. R. BIELAWSKI, B. PISARSKI (IZPAN).

The species can be recognized by large, transversally oval epigynum in females (figs. 30, 32) with huge copulatory openings. Spermathecae are heavily sclerotized and consist of a number of very complicated chambers (figs.

31, 33). The external shape of epigynum resembles somewhat a North American species — *Dendryphantes glacialis* SCHEFFER, 1906, whose spermathecae are however unknown to me. The male remains unknown.

The species is named in honour of its collector, A. V. BIANKI.

#### 11. *Dendryphantes czekanowskii* sp. n.

Yakutia: 1 ♀ (holotype) — „and flumen Monjero, 66°26' N.; Expeditio ad fl. Olenek, CZEKANOWSKI, 1875, V” (ZIN).

The species is characterized by oval, almost round shape of the epigynum (fig. 34), with small copulatory openings, located laterally in the anterior half of the epigynum. The copulatory canals are straight and pass into single coil at the end, being the spermatheca (fig. 35). There are no complicated chambers in the spermathecae. The male remains unknown.

The species is named in honour of the collector, A. P. CZEKANOWSKI (1833–1876), a prominent Polish geographer and geologist, who deported to Siberia became one of its explorers.

#### 12. *Dendryphantes hastatus* (CLERCK, 1758).

Siberia: 3 ♀♀ — village Bunbunskoye near Kansk, Krasnoyarsk region, on young pine trees (ZIN).

The internal structure of epigynum (fig. 36) matches that of Central European specimens. The specimens were collected in the environment typical for the species also in Poland. New for Siberia.

#### 13. *Dendryphantes fusconotatus* (GRUBE, 1861).

*Attus fusconotatus* GRUBE 1861.

*Dendryphantes thorelli* KULCZYŃSKI 1895: 24–29, ff. 30–33, syn. n.

*Attus medius*: GRUBE 1861.

*Dendryphantes fusconotatus*: PRÓSZYŃSKI 1971: 210–211, ff. 10–12.

1 ♀ — lectotype (new), 1 ♂ — paralectotype (new) „*Dendryphantes thorelli*, Kultuk, coll. W. KULCZYŃSKI” (IZPAN); 1 ♂ — holotype „*Dendryphantes fusconotatus* GRUBE, 1861, MAACK, Amur, coll. GRUBE” (Zool. Mus. Wrocław); ♀, ♂, — „*Dendryphantes fusconotatus* — det. J. PRÓSZYŃSKI, Mongolia, Gorch, 50 km NE from Ulan Bator, 24–25 VI. 1962, leg. R. BIELAWSKI, B. PISARSKI (IZPAN); ♂ — Mongolia, Gobi (IZPAN). Identified as either *D. fusconotatus* or *D. thorelli* by J. PRÓSZYŃSKI: Primore: ♂♂ — Kangauz, Dzhangha, Vinogradovka; Liman of Amur and Okhoek Sea area: Getcha, Ozerpakh Peninsula; Yakutia — Amga area (ZIN).

The external appearance of copulatory organs in both sexes is quite misleading. In males the length of embolus and conductor may be variable, in one specimen their tips are even broken (could it be blocking of the female

openings after copulation?). The variation in these organs and their details are shown on figs. 37, 53-57; in spite of some differences there is no apparent character separating these structures. There is an interesting resemblance of ♂ copulatory organ of *D. thorelli* to *D. jeffersoni* EMERT: CHAMBERLIN and GERTSCH 1929: 11, f. 53, (but not 51), an American form from Lamb's Canyon, Utah, which may suggest close resemblance of both forms.

The external shape variation in epigynum of females (figs. 38, 44, 46, 48, 50, 58) is also rather misleading. This is due to lack of distinct external structures, with an exception for two large grooves separated by a broad ridge. The margins of these grooves may appear more or less depressed, broader or narrower, the ridge may be more or less convex — all this gives changes in appearance. The spermathecae are difficult to study because of heavy sclerotization of their walls, they consist of a number of irregular chambers, coiled and interwoven, and they also may appear variable. The copulatory openings, located in the large, arched and sclerotized grooves, are quite similar in all forms, the same can be said on the broad transversal canal running from the openings to the mass of chambers (figs. 45, 47, 49, 51-52, 59, 60). The proportions of size of the spermathecae to the copulatory openings seem to be constant and characteristic for the species. The abdominal pattern, very characteristic for the genus, is shown on figs. 61-63.

The interpretation of the above described variation and selection of good taxonomic characters for this species cannot be, presumbaly, done on preserved specimens only, and should be complemented by study of new material and field observations.

#### 14. *Euophrys erratica* (WALCKENAER, 1825).

Primore: 1 ♂, 29. V. 1968, 1 ♀, 5. VIII. 1968 — River Kedrovka, from the litter of a deciduous forest on southern slope; ♂, VI. 1928 — Yakovlevka, Spassk area (ZIN).

The details of ♂ copulatory organs are shown in figs. 66-68, epigynum and its internal structures in figs. 64-65.

#### 15. *Euophrys frontalis* (WALCKENAER, 1802).

*Attus flavoater* GRUBE, 1861, *syn. n.*

*Euophrys flavoatra*: PRÓSZYŃSKI 1971: 211-212, ff. 13-15.

Primore: 2 ♀♀, 2 ♂♂ — 6. VI. — 5. VIII. 1968, River Kedrovka, litter of a deciduous forest on southern slope; 1 ♂ — Suputinski Reserve; 1 ♂ — Teishgla (ZIN).

The ♂♂ differ from European forms in having pedipalpal and leg I femora yellow, the coloration of remaining segments of leg I (fig. 74) agrees with European specimens. The external appearance of epigynum is shown in fig. 69, the ♂ copulatory organ in figs. 71-73.



16. *Euophrys nigrata* (THORELL, 1875), **comb. n.**

*Heliphanus nigratus* THORELL, 1875.

Southern European USSR: Lower Don area — 1 ♂ — "*Heliphanus nigratus* THOR., Taganrog area — Artemovka, VII. 1912" — coll. SPASSKY (ZIN).

I am unable to check SPASSKY's identification of this species, so the change of combination is provisional. The details of ♂ copulatory organ are shown in figs. 75–77.

17. *Euophrys obsoleta* (SIMON, 1868).

Southern European USSR: Lower Don area — 1 ♀ — either Novochoerkask or Berdiansk; Crimea — 1 ♂ — Totman (ZIN).

The structure of epigynum is shown in figs. 78–79; that of ♂ copulatory organ in figs. 80–83. MILLIDGE and LOCKET 1955 have described closely related species *E. browningi*, the differences between both forms are not yet clear for me.

18. *Euphrys thorelli* KULCZYŃSKI in CHYZER ET KULCZYŃSKI, 1891:

There is a single ♀ of this species in the SPASSKY's collection in ZIN, with an illegible label. According to CHARITONOV (1936: 217) SPASSKY has reported that species from „Turkistan: Semiretschie” — that is presumably from Semireche in the Alma-Ata area, Kazakhstan, but I cannot be sure whether it is exactly the specimen. The external appearance of epigynum is shown in fig. 70.

19. *Evarcha albaria* (L. KOCH, 1878).

Primore: numerous specimens from Kedrovaya Pad', Suputinski Reserve, Kangauz, Lake Hanka area and several localities in the Ussuri area (ZIN).

One of commonest *Salticidae* in that area. The shape of epigynum is shown in figs. 84 and 85, a diagram of the sagittal section of epigynum in fig. 86.

20. *Evarcha albopilosa* TYSTSCHENKO, 1965.

Kazakhstan: Kokshetau, Akmolinsk (present Celinograd) area, on hill's slope covered with *Artemisia* sp. — 1 ♀ — holotype, under stone, 1 ♂ — paratype — swept on *Artemisia*, coll. TYSTSCHENKO (ZIN).

The male and female appear to be not conspecific. The ♂ matches *Pellenes limbatus* as shown by KULCZYŃSKI (1895: 43–46, ff. 19–21), so it should be reidentified as such. The systematic position of ♀ is not yet clear to me, because I was not able to make microscopic preparation of its epigynum. The ventral view of epigynum is shown in fig. 87, the dorsal view of spermathecae (surrounded by soft tissues) in fig. 88. The dorsal abdominal pattern of ♀, with two black longitudinal stripes, separated by the white one, resembles some *Pellenes* spp.

21. *Evarcha arcuata* (CLERCK, 1758).

Primore: Lake Hanka, Kangauz, Kedrovaya Pad' and Suputinski Reserve; Amur Valley — various localities down to estuary; Yakutia — river Chona; Baikal Lake area — river Kuytun; Krasnoyarsk area — village Bunbuyskoe (ZIN).

All together 34 ♂♂ and 21 ♀♀, which means that the species is really common in the East Siberia and especially Primore.

22. *Evarcha falcata* (CLERCK, 1758).

Primore: a few specimens from Kangauz; Amur Valley — a few specimens from various localities along the river in its median and lower course; Yakutia — somewhere along Lena River (Shtcheki and Sondal-hu); Baikal Lake area — Irkutsk and some place near the Lake; Krasnoyarsk area — village Bunbuyskoe (ZIN).

All together 14 ♂♂ and 12 ♀♀ — that is about half of the number of *E. arcuata* found in the same area of the USSR; in Primore alone there were collected only 3 adult specimens of *E. falcata* and 37 of *E. arcuata*. Taking into account that in Central Europe both species seem to be equally numerous and equally easily collected in the same environments, we may conclude that there is distinct quantitative decrease of *E. falcata* in the Far East of the USSR, while *E. arcuata* feels there at home.

*E. falcata* is a Holarctic species represented in Palaearctic and Nearctic by subspecies *E. falcata falcata* and *E. falcata hoyi* respectively. I did not try to identify the subspecific status of the Far Eastern specimens because criteria of separation of these subspecies are not yet worked out.

23. *Helophanus auratus* C. L. KOCH, 1848.

Baikal Lake area: 5 ♂♂, 3 ♀♀ — Chevirku; Yakutia — 1 ♀ — river Chona, near Semenov; Kazakhstan — 1 ♂, 1 ♀ — „*Heliophanus nigriceps*, Semireche, Alma-Ata region, coll. SPASSKY” (ZIN); Turkmenia — 1 ♂ on cotton field in the Murgab area.

The Siberian specimens correspond with *H. auratus*: HARM 1971: 65–65, ff. 22–26. The genital organs of specimens from Kazakhstan are shown in figs. 89–94. The ♂ from Turkmenia differs somewhat by the shape of the upper part of bulbus (figs. 95–97), so its identification is provisional pending further studies.

24. *Heliophanus baicalensis* KULCZYŃSKI, 1895.

Amur Valley: 2 ♀♀ — Ulunga, on the road to Zeya, 18. V. (ZIN).

The external and internal structure of epigynum is shown in figs. 98–100 and they agree with type specimens from Kultuk (Baikal Lake shores) (IZPAN). Known heretofore from Baikal Lake area only.

25. *Heliophanus camtschadalicus* KULCZYŃSKI, 1885.

Yakutia: Letnik (summer pasture) Abiy — 1 ♀, 22. VII. 1925 (ZIN).

Known heretofore from Kamchatka only. The epigynum of the Yakutia specimen resembles holotype externally, some differences in the position of spermathecae are presumably due to the displacement during preparation. The structure of that organ is shown in figs. 101 and 102. These structures should be studied again on fresh specimens.

26. *Heliophanus dampfi* SCHENKEL, 1923.

Northern European USSR: 1 ♀ – Sablino near Leningrad, 4. VII. 1926, det. CHARITONOV (ZIN).

The internal structure of epigynum is shown in fig. 103, it matches exactly specimens from Czechoslovakia, identified by F. MILLER. New for the Leningrad area.

27. *Heliophanus kochi* SIMON, 1868.

Southern European USSR: 1 ♀ – Kekeneshch, Crimea (ZIN).

The epigynum is shown in figs. 104–106, it matches well the preparation made by F. MILLER from Mohelno, Southern Czechoslovakia.

28. *Heliophanus lineiventris* SIMON, 1868.

Primore and Amur Valley: 7 ♀♀ – Kangauz, Hanka Lake, village Troickoye and Malvinskoe (the latter presumably close to Amur estuary), Southern European USSR – Lower Don area: 1 ♂ – Novocherkask, coll. SPASSKY (ZIN).

The ♀♀ correspond well with the drawings of CANTARELLA (1974: 164–165, ff. 9–11, 19–21), the identification of the ♂ by SPASSKY was not verified by myself. The species is new for Primore and Amur, and this identification extends the distributional area of this species to the eastern ends of the continent. The epigynum and its internal structures are shown in figs. 107–109. It resembles *H. kochi* in general outline, but differs in straight copulatory canals. The structure of the ♂ copulatory organ is shown in figs. 110–114. The species lives on grasses and shrubs.

29. *Heliophanus simplex?* SIMON, 1868.

Crimea: 1 ♀ – Kekeneshch, 11–20 V. 1927, leg. V. BAROVSKIY (ZIN).

The species corresponds with MILLER's specimen from Czechoslovakia, but differs from the specimens from Corfu in DAHL's collection in Berlin. HARM (1971: 77–78, ff. 50–51) gave drawings of the ♂, but unfortunately not of the ♀ of *H. simplex*. In this circumstances I am not sure of my identification, which should be checked again during revisiion of the genus. The epigynum of the studied species is shown in figs. 115–116.

30. *Heliophanus tribulosus* SIMON, 1868.?

Kazakhstan: 1 ♀ – Semireche in the Alma-Ata area, identified by SPASSKY as *H. cambridgei* (ZIN).

The epigynum is shown in figs. 117–118. I was unable to compare it with HARM (1971, figs. 41–42), as well as with a specimen in DAHL's collection in Berlin because of differences in drawing technique. The identification is provisional.

31. *Heliophanus ussuricus* KULCZYŃSKI, 1895.

Primore and Amur Valley: 14 ♀♀, 6 ♂♂ from Kedrovaya Pad' Reserve, Kangauz, Hanka Lake, Ulunga, Khabarovsk area (ZIN).

Collected by sweeping on grasses and low vegetation in a mixed forest and presumably in other biotopse. The structure of epigynum is shown in figs. 119–122, the ♂ copulatory organ in figs 123–129. These structures agree with type specimens from the KULCZYŃSKI collection in IZPAN.

32. *Icius abnormis* (BÖSENBERG et STRAND, 1906), **comb. n.**

*Jotus abnormis* (BÖSENBERG et STRAND 1906.

Primore: 14 ♀♀, 1 ♂ – Baraudinsk, Kangauz, Spassk, Tigrovaya, Viatskoye, Vladivostok (ZIN).

Collected by sweeping on grasses. The epigynum is shown in fig. 130, it resembles to some extent YAGINUMA's specimens from Japan. The identification should be considered provisional.

33. *Icius castriesianus* (GRUBE, 1861), **comb. n.**

*Attus arenicolor* GRUBE, 1861; PRÓSZYŃSKI 1971: 207–208, ff. 1–6.

Primore: 32 ♂♂, 72 ♀♀ – Kedrovaya Pad' Reserve, Kedrovka River, Kangauz, Hanka Lake (ZIN).

The external appearance of a rather dark coloured ♂ is shown in fig. 131. Black the entire prolateral surface of femur I and thick black lines on femora II and III appear to be characters separating the species from two other related ones. The structure of o copulatory organ is shown in figs. 132–134, the diagnostic character being tibial apophysis, bent off the bulbus when seen in ventral or dorsal position. The same structures in a specimen with copulatory organ twisted into unusual position is shown in figs. 135–137.

I am somewhat at lost with ♀♀ of this species, quite numerous in the ZIN collection. None of them, however, agrees with female of allegedly of the same species from Rumania (fig. 142). I made drawings of 2 different ♀♀ from Primore at the beginning of my studies, one of which I have identified subsequently as *Icius difficilis* (figs. 143–144), the other being quite special and is shown in figs. 154–155. I have drawn these conclusions after I have completed these research and having no access to the collection I cannot tell which of these females is representing all 72 specimens I have mentioned in my notes. So the whole material should be checked again in order to mach proper ♀ with the above described ♂.

There is another point which needs clarification. It appears that ♂♂ from Primore differ in structure of their copulatory organ, especially that of broadened embolus, from the specimens from Rumania (figs. 138–141). I cannot comment yet on the significance of these differences, but one can wonder whether both forms are really conspecific. This calls for further revisional study.

34. *Icius difficilis* (BÖSENBERG et STRAND, 1906), **comb. n.**

*Jotus difficilis* BÖSENBERG et STRAND 1906).

Primore: 2 ♀♀, 1 ♂ – Hanka Lake, Yakovlevka near Spassk, Suputinski Reserve (ZIN).

The epigynum resembles closely *I. difficilis* specimens from Japan (YAGI-NUMA coll.) and is shown in figs. 143–144. The ♂ was collected together with a ♂ of *Icius castriesianus*, which means that both live in the same environment. I assume that it is ♂ of *I. difficilis*, unknown heretofore, its external appearance is shown in fig. 146 – note thin black line on the prolateral surface of femora I–IV. Its copulatory organ is analysed in figs. 147–149 – note elongated and thin tibial apophysis.

35. *Icius popovi* **sp.n.**

Primore: 1 ♂ – holotype, Kangauz, Shkotovo area, sweeping on dense grass and shrubs, 8. VII. 1968, leg. F. E. POPOV; 2 ♂♂ – paratypes – Kangauz, 1.–5. VII. 1968; Ussuri: 1 ♂ – paratype, Vinogradovka, V. 1929, leg. A. KIRICHENKO. Siberia: 1 ♂ – Kuytun, Irkutsk region, VII. 1934, leg. I. A. RUBCOV (ZIN).

The external appearance is shown in fig. 150. The easy separating character appears to be the occurrence of two black spots on prolateral surface of femora I–II (compare with two previous species). The copulatory organ is analysed on figs. 151–153, the diagnostic character is tibial apophysis bent towards the bulbus and not off the bulbus, as it was in *I. castriesianus*. The ♀ remains unknown.

The species is named in honour of the collector, Mr. F. E. POPOV, who has made large collection of spiders from Primore, kept in the ZIN.

36. *Marpissa dybowskii* KULCZYŃSKI, 1895.

Primore: 1 ♂, 3 ♀♀ – Kedrovaya Pad' Reserve, Suputinski Reserve, Ussuri area: 3 ♂♂, 2 ♀♀ – Slovianka, Vinogradovka, confluence of rivers Kin and Ussuri (ZIN).

The structure of ♂ copulatory organ is analysed in figs. 156–163, the separating characters are apparently teeth on tibial apophysis. The structure of epigynum is shown in figs. 164, 166–168, the abdominal pattern in fig. 167.

The only edological information given on the label is collecting of one specimen on grass or bush in forest, and of other inside a house.

37. *Marpissa nobilis* (GRUBE, 1861).

Primore: 2 ♂♂, ♀ — Kamen Rybolov on the Hanka Lake, leg. CZERSKI (ZIN).

The structure of ♂ copulatory organ is shown in figs. 171–175 and it matches the holotype quite well (PRÓSZYŃSKI 1971: 212–214, ff. 16–19). The ♀ was not described yet, her epigynum is shown in figs. 176–177. The internal structure of epigynum is quite special and distinctly different from related species. A single ♀ of this species is kept in the series of 4 syntypes of *Marpissa magister* (KARSCH, 1879) kept in the Senckenberg Museum, Frankfurt, a. M. Professor YAGINUMA has kindly communicated me recently that he found a similar ♀ in Japan, I have benefited from his remarks on characters of this species.

38. *Marpissa salsophila* TYSTSCHENKO, 1965.

Kazakhstan: 1 ♂ (holotype) — on *Salsola* sp., Kokshetau in the Celinograd administrative area (formerly Akmolinsk), 13. VI. 1957, leg. V. P. TYSTSCHENKO (ZIN).

The separate specific status of this species was questioned by NEMENZ (1967: 4, f. 1), who has proposed to synonymize it with *Mithion canestrinii* (NINNI, 1868). Close examination of the holotype (figs. 178–181) has yielded some minor differences, for instance in shape of the tibial apophysis, which may be quite variable (see also figs. 182–183 of related forms of uncertain position from SPASSKY's collection), but did not answered the question put by NEMENZ. There is a group of closely related forms, including *M. canestrinii*, *M. elongata*, *M. magister*, *M. obscura* (KRONENBERG 1875: 46–47, t. 5, f. 33, described from Samarkand) and also a new species from Korea and Japan. It seems that finding out specific status of these forms needs revision of all of them, and study of fresh specimens. The study of unknown ♀ of the species described by TYSTSCHENKO may be especially important.

As far the above mentioned specimens from SPASSKY's collection from either Dniepropetrovsk or Berdiansk, the first seems to be similar to *M. salsophila*, the second could be *M. canestrinii*.

39. *Marpissa pomatia* (WALCKENAER, 1802).

*M. sibirica* PRÓSZYŃSKI, 1976 (nom. nudum).

Primore and Amur Valley: 23 ♂♂, 23 ♀♀ — Kedrovaya Pad', Khutara Bay in the Tatar Sound — 45°, Den, Dzhanga, Dungari, Lake Gelga, Marvinskoye, Malvinskoye, Navozovo, River Beshennaya near Zimmermanovka, Sakhode, Sofiyskoye, Tambovskoye, Ulunga, Vinogradovka; Yakutia: 1 ♀ — Lake Ceedeyonunta (?) (1 day from Lutenga on Lena River); Baikal Lake area: 1 ♀ — Kuytun; Krasnoyarsk area: 9 ♂♂, 9 ♀♀, 12 juv. — Village Bunbunskoye, near Kansk (ZIN).

This apparently quite common species, living mainly on grass and presumably close to water, is quite similar to *Marpissa radiata* (GRUBE, 1859) from which differs in much more complicated loops of the copulatory canal in females. The structure of epigynum is analysed in figs. 192–199, that of

copulatory organ in males in figs. 184–191. The general appearance of females is shown in fig. 169. I am less certain about specific differences in males. The species should be, however, compared with *M. radiata* and only such study could give clear differences and characters.

I suspect that *M. radiata* reported by SYCHEVSKAYA 1935 (CHARITONOV 1936) from Kamchatka, and by several authors from Siberia (Tomsk, Krasnoyarsk) may belong in fact to this species. It would be necessary to check again these identifications in order to find out their real geographical distribution.

40. *Menemerus marginatus* (KRONEBERG, 1875).

Uzbekistan: 1 ♀, 1 ♂ – Samarkand, coll. SPASSKY (ZIN).

I accept identification made by SPASSKY, without being able to check it. There is some resemblance to KRONEBERG's drawings 34a–d, as well as to ♀ of *Pellenes denisi* SCHENKEL, 1963: 440–441, f. 252. The species is, however, a *Menemerus*. The epigynum of the SPASSKY's specimen is shown in figs. 200–201, the ♂ copulatory organ in figs. 202–206.

41. *Menemerus semilimbatus* (HAHN, 1827).

Georgia: Batumi – 1 ♀, VII–VIII 1925, coll. SPASSKY (ZIN).

Epigynum of this species is shown in figs. 207–208.

42. *Menemerus taeniatus* (L. KOCH, 1876).

*Menemerus parietinus* SPASSKY 1934: 135, *syn.n.*

Black Sea shores: Khosta and Sukhumi, 1 ♂, 1 ♀ (syntypes?) and remnants of several specimens, wrapped in pieces of paper, coll. SPASSKY (ZIN).

The specimens match SIMON's (1937) drawings ff. 1934–1936. The epigynum is shown in figs. 214–216, the ♂ copulatory organ in figs. 209–213.

43. *Mogrus antoninus* ANDREEVA, 1975.

Turkmenia: 1 ♂ – Murgab area, on cotton field, leg. K. KAMALOV.

The copulatory organ is shown in figs. 217–218.

44. *Myrmarachne formicaria* (De GEER, 1778).

Primore and Ussuri area: 1 ♀ – River Kedrovka, 1 ♀ – Vinogradovka (ZIN).

The external abdominal pattern is shown in fig. 219, epigynum in figs. 220–221. New for Eastern USSR.

45. *Myrmarachne lugubris* (KULCZYŃSKI, 1895).

Primore: 4 ♀♀ – Hanka Lake (Kamen Rybolov), Kangauz (ZIN).

The specimens match type specimens kept in IZPAN. The epigynum (fig. 222) is somewhat special, but its internal structure (fig. 223) indicates close relationships with *M. formicaria*.

46. *Neon levis* (SIMON, 1871).

Crimea: Kessler's Forest near Simferopol, oak leaves litter, 1 ♀, 20. IV. 1924 (ZIN).

The structure of epigynum is shown in figs. 224–226.

47. *Neon reticulatus* (BLACKWALL, 1855).

Primore: 2 ♀♀ – River Kedrovka (ZIN).

The epigynum is shown in fig. 227. New for Primore.

48. *Pellenes ignifrons* (GRUBE, 1861).

Okhock Sea area: 4 ♂♂ – Village Chega, in a *Larix* sp. forest; Yakutia: 1 juv. ♀ – Lake Deedeyonunta (?) (1 day from Lutenga on the Lena River), 1 ♀ – Lake Kurdan (64°47'N, 119°55'E); 2 ♀♀, 2 ♂♂ – Khamurgan, Ardyn-namok ulus (ZIN).

The epigynum is shown in fig. 228. New for Yakutia. According to personal communication from Mr. W. MADDISON, the species is identical with North American *Pellenes laggani*.

49. *Pellenes limbatus* KULCZYŃSKI, 1895.

Kazakhstan: 1 ♂ (paratype of *Evarcha albopilosa* TYSTCHENKO, 1965) – Kokshetau, Akmolinsk (present Celinograd) area, swept on *Artemisia* sp., leg V. P. TYSTCHENKO.

New for Kazakhstan (see remarks on *Evarcha albopilosa* – above).

50. *Pellenes nigrociliatus* (SIMON in L. KOCH, 1875).

Crimea and nearby area: ♀♀, ♂♂ – Sevastopol and Berdiansk areas (identified as *P. bedelli* by SPASSKY; 2 ♀♀ – Gastra (ZIN).

The epigynum of ♀ from SPASSKY collection is shown in figs. 229–230, the ♂ copulatory organ in figs. 231–234. The latter differs from the drawings 43–44 in PRÓSZYŃSKI (1971) in embolus fused with conductor.

51. *Pellenes tripunctatus* (WALCKENAER, 1802).

Yakutia: 1 juv. ♂ – between lakes Mirchandon (64° 56'N, 119° 56'E) and Eyitdyaryatya (63° 13'N, 119° 40'E); Kazakhstan: 3 ♀♀ – Alma-Ata, coll. SPASSKY; Crimea 1 ♂ – Feodosia (ZIN).

The species is new for Yakutia, but was already reported from Kamchatka (CHARITONOV 1936). The epigynum of ♀ from Alma-Ata is shown in fig. 235. E. M. ANDREEVA (1975) reports 1 ♂ of either somewhat modified *Pellenes tripunctatus* or very closely related species from Luli-Kharvi, Tadjikistan. The relationships between both forms and possible border of their areals await further investigations.



52. *Pellenes* sp. 1.

Crimea: 1 ♀ — Totman, 14.–20. V. 1913 (ZIN).

I abstain from identification of this species, because South European *Pellenes* are not sufficiently known. The epigynum is small (figs. 237–238) and resembles drawings 1991 and 1998 of SIMON (1937) which unfortunately are not precise enough. The external appearance is shown in fig. 236.

53. *Pellenes* sp. 2.

Turkmenia: Murgab area, on cotton field, 1 ♀, leg. K. KAMALOV.

The epigynum (fig. 239) resembles *Pellenes nigrociliatus* or *P. geniculatus*, the coloration of abdomen is, however, quite special (fig. 240).

54. *Philaeus chrysops* (PODA, 1776), **syn. n.**

*Pallenes unipunctatus* SAITO, 1960: 160, ff. 226a–b.

Primore and Ussuri region: 1 ♀, 1 ♂ — Lake Hanka (Kamen Rybolov), 2 ♀♀, 1 ♂, Nikolskoye near Ussuriysk — 6 ♀♀, 2 juv. — River Suchan; Crimea: — 2 ♀♀, 6 ♂♂ — Kekelesh, 1 ♂, 1 ♀ — Gastra (ZIN).

The species displays distinct sexual dimorphism in coloration of abdomen: in males red with black streak (fig. 248), in females, as well as in immature males, grey with two white, parallel, longitudinal lines (figs. 241, 247). This dimorphism has caused some confusion in the taxonomy of the genus.

The details of the ♂ copulatory organ are shown in figs. 249–250, 251–253, the epigynum of ♀♀ are shown in figs. 243–246. The unusual faded coloration of a ♂ from Primore is shown in fig. 254; it resembles coloration of SAITO's *Pellenes unipunctatus* from Japan. The drawing of copulatory organ viewed in the same position as on SAITO's drawing 226b (fig. 253) proves that both forms are conspecific and their names should be therefore synonymized.

The last, heretofore, collecting point east from the Ural Mts., was in the upper Irtish River basin, where it has been found by Dr. L. G. SAVIELYEVA, together with an undescribed but similarly coloured species and another species coloured black (personal communication from Dr. SAVIELYEVA). So the species can be considered new for both Primore and Japan.

55. *Phlegra fasciata* (HAHN, 1826).

Primore: 1 ♂ — Kangauz, in a dry valley; Yakutia: 1 ♀ — stream Ongkuchakh, confluent of the Manda River (ZIN).

The copulatory organ of ♂ is shown in figs. 255–256, the abdominal pattern of ♀ in fig. 257 and its epigynum in figs. 258–259. The species is new for both Primore and Yakutia.

56. *Phlegra fuscipes* KULCZYŃSKI in CHYZER ET KULCZYŃSKI, 1891.

Southern European USSR: ♂♂, ♀♀ — Artemovka, Don area, coll. SPASSKY (ZIN)

The structure of this species is rather insufficiently known, so I give the detailed drawings. The structure of the ♂ copulatory organ is shown in figs. 260–264, the structure of epigynum in figs. 265–267. The median ridge in epigynum appears variable and may be absent entirely.

57. *Phlegra sogdiana* CHARITONOV, 1946.

Uzbekistan: 2 ♂♂, 2 ♀♀ (types) — Ishkeng area, Kashka-Dar administrative region, 16–28. VI. 1942, leg. D. M. FEDOTOV, det. D. E. CHARITONOV.

The copulatory organ of single ♂, I have seen, is shown in figs. 268–270. The only ♀ I have got, has removed and lacking epigynum.

58. *Pseudicius rufovittatus* SPASSKY, 1952.

Turkmenia: 2 ♂♂ — Murgab area, on cotton field, leg. K. KAMALOV.

The palpus of this remarkable species is shown in figs. 271–272, the details of its copulatory organ in figs. 273–274, cheliceral dentition in fig. 275.

59. *Pseudicius vulpes* (GRUBE, 1861).

Primore and Ussuri area: 9 ♀♀, 13 ♂♂ — Kedrovaya Pad', Kangauz, Khabarovsk, Mikhailovskoye, Shkotovo, Slovianka, Ussuriysk (ZIN).

The external appearance of ♂ is quite striking and may help in identification; it is shown in fig. 276. The epigynum is shown in figs. 277–278.

60. *Salticus cingulatus* (PANZER, 1797).

Yakutia: 1 ♂, 1 ♀ — Khamurgan, Arbin Namok ulus (ZIN).

The male copulatory organ is shown in figs. 279–282. The species has been reported heretofore from the Krasnoyarsk area and is new for Yakutia.

61. *Sitticus albolineatus* (KULCZYŃSKI, 1895).

Primore: 40 ♀♀, 19 ♂♂ — mainly from River Kedrovka and Kedrovaya Pad', a few also from Kangauz (ZIN).

The ♀ has not been described yet; its epigynum is shown in figs. 283–284, its abdominal pattern in fig. 285. The abdominal pattern of ♂ is quite special, different from ♀ and from other related species; it is shown in fig. 289. The structure of ♂ copulatory organ is shown in figs. 286–288.

The labels written by the collector, Mr. E. F. POPOV, give some picture of biology of this species. The majority of specimens was collected from among the stones strewn on shores of streams and rivers, the environment was described as forest, either mixed or broad-leafed, in one case as sunny shore. Some specimens were taken from under the stones, three cocoons (contained 30 and 35 eggs respectively, and 33 spiderlings in the third) were covered with sand or fine gravel, the ♀♀ remained in cocoons — apparently protecting them.

One may assume that they were laid under the stones in the same way as European *Sitticus rupicola* does (except that *S. rupicola* is mountain dweller, not connected with stream shores).

Known heretofore from Baikal Lake shores, new for Primore.

62. *Sitticus caricis* (WESTRING, 1861).

Primore — Liman of Amur: 1 ♀ — village Cherrick, between peninsulas Petakh and Ozerpakh (ZIN).

Known heretofore from Europe and Kamchatka, common but rarely collected, it may be expected to occur in Siberia as well.

\* 63. *Sitticus fasciger* (SIMON, 1880).

Primore: 3 ♀♀, 3 ♂♂ — Hanka Lake (Kamen Rybolov), Kangauz, River Kedrovka; Yakutia: 1 ♀ — Lake Deedeyonuta (?), near Lutenga on Lena River (ZIN).

The species has been known heretofore from Peking, China and Darasun (East Siberia) (as *S. godlewskii* KULCZ.) introduced in 1950s into the USA (PRÓSZYŃSKI 1968: 391–407). New for Primore.

64. *Sitticus finschi* (L. KOCH, 1879).

Yakutia: 1 ♀ — „ad flumen Monjero 66°26'” (ZIN).

Known previously from Northern Siberia (Salekhard and River Bytantay near Verkhoyansk), in North America distributed from Alaska to New England.

65. *Sitticus floricola* (C. L. KOCH, 1837).

Primore and Amur Valley: 2 ♂♂ — Primore (without exact locality), Zimmermanovka near confluence of the Beshennaya River into Amur; Yakutia: — 2 ♂♂, 7 ♀♀ — village Ugalyak (64°7'N, 120°8'E), Tulaginskiy Nasleg, River Amga (ZIN).

A Holarctic species, in Eastern Palaearctic known already from Western Siberia, Transbaicalia and Ussuri, but not from Yakutia. Represented in Palaearctic and Nearctic by separate (?) subspecies; as identification characters for these subspecies have not been worked out, I have abstained from precisising subspecific status of the studied specimens.

66. *Sitticus lineolatus* (GRUBE, 1861).

Yakutia: 1 ♀ — between Lakes Sordonchiakh (64°15'N, 121°45'E) and Bagardja (64°03'N, 120°55'E) (ZIN).

Holarctic species, known already from Viluy River (PRÓSZYŃSKI 1971).

67. *Sitticus viduus* (KULCZYŃSKI, 1895).

Primore: 3 ♂♂, 2 ♀♀ — Kedrovaya Pad', 600 m above sea (ZIN).

New for Primore, known heretofore from Baikal Lake shores and North Korea (PRÓSZYŃSKI, in prep., WESOŁOWSKA, in press.).

68. *Synageles charitonovi* ANDREEVA, 1976.

Turkmenia: 1 ♂ — Murgab area, on cotton field, leg. K. KAMALOV.

The ♂ is easily recognizable by an unusually long tibial apophysis, forked on the tip (fig. 290).

68. *Synageles hilarulus* (C. L. KOCH, 1846).

Primore: 1 ♀ — Kangauz (ZIN).

The epigynum is shown in fig. 291. Known heretofore from Europe and Uzbekistan (Samarkand), new for Primore.

70. *Synageles scutiger* sp. n.

Southern European USSR: 1 ♂ (holotype) — Berdiansk area, 6. V. 1938, leg. V. NIKOLAYEV, det. SPASSKY (ZIN).

As I could not find any description of *Synageles scutiger* in the literature, I decided to describe as new species the so labelled specimens from the SPASSKY collection. I assume that SPASSKY has recognized the species as new but failed to describe it.

The species differs from all other known to me *Synageles* by long and robust tibial apophysis, directed somewhat dorsad and broadly rounded at the tip. The details of the copulatory organ are shown in figs 293–297, the general appearance is shown in fig. 292.

71. *Synageles venator* (LUCAS, 1836).

Lower Amur area: 1 ♂ — Nikolaevsk, leg. SCHRENCK, coll. GRUBE (Zool. Mus. Wrocław); Primore: 1 ♂ — Kedrovaya Pad', 1 ♀ — Suputinski Reserve (ZIN).

The specimen from GRUBE collection is somewhat confusing, it resembles *Synageles* both in general appearance (fig. 298) and general structure of the copulatory organ (figs. 299–306). However, the inflated process on the anterior part of the bulbus does not resemble any species known in this genus. To explain this I have boiled in the KOH copulatory organ of another *Synageles venator* from Poland and have found that whitish soft membrane in the anterior part of the bulbus became inflated in a very similar manner (figs. 305–306). I assume therefore that specimen from Nikolaevsk was caught with an inflated bulbus, during copulation perhaps.

I wish to call attention to very different appearance of tibial apophysis in male *S. venator*, when seen in various positions.

72. *Synagelides agoriformis* STRAND in BÖSENBERG et STRAND, 1906.

Primore: 7 ♂♂, 8 ♀♀ — Kedrovaya Pad', River Kedrovka, Suputinski Reserve (ZIN).

The ♀ is identical with type specimen kept in Senckenberg Museum in Frankfurt a. M., and with Japanese specimens collected by Professor

T. YAGINUMA. The species resembles also *Tagoria cavaleriei* SCHENKEL, 1963: 393-397, ff. 227a-k; both forms are apparently congeneric, but existing drawings do not allow conclusions whether they are also conspecific.

The details of copulatory organ of the ♂ are shown in figs. 307-310, epigynum of female in figs. 311-312, the abdominal pattern in figs. 313-315.

According to labels the species lives in litter of a deciduous forest, in one case on a sunny slope, 2 ♂♂ were caught by sweeping. New for the USSR, known heretofore from Japan, discovered also in North Korea (WESOŁOWSKA, in press.).

### 73. *Synagelides zhilcova* sp. n.

Primore: 1 ♀ (holotype) — middle course of the Kedrovka River, between stones on the shore, 11. VI. 1968, leg. F. E. Popov (ZIN).

Resembles the previous species in general appearance, differs by epigynum more narrow (fig. 316), sloping lateral edges of which are limited anteriorly by rounded folds with median ends drawn rearwards. In comparison with the previous species the anterior parts of the copulatory canals are much broader and spermathecae are much closer to these broad parts (fig. 317). The male remains unknown.

The species is named in honour of Dr. L. A. ZHILCOVA, the curator of the arachnid collection in the ZIN.

### Genus *Yaginumaella* PRÓSZYŃSKI, 1976.

A few years ago I had the opportunity to discuss with Professor Takeo YAGINUMA the systematic position of his species *Pellenes ususudi* and have suggested classification of it into the genus *Pellenes*. After examination of new material from Primore and Korea I came to the conclusion that these spiders are distinct from *Pellenes* and should be placed in a new genus of their own, apparently closely related to *Pellenes*. I named this new genus *Yaginumaella* in honour of Professor Takeo YAGINUMA.

The genus is characterized by the shape of ♂ copulatory organ having single, undivided embolus and the cymbium flat and broad in a way comparable with American *Maevia*. The epigynum is rounded, with two peculiar, sclerotized flaps in the median anterior part, serving apparently as an attachment place during copulation. The copulatory canals are broad and bag-shaped, passing either into a few broad coils or sclerotized chambers. The epigynum is therefore so special, that it cannot be mistaken with that of any other genus known to me.

The type-species is *Pellenes ususudi* YAGINUMA, 1972, apart from it two following species should be also included into the genus. These are *Pellenes striatipes* (GRUBE, 1861): PRÓSZYŃSKI 1971: 219, ff. 28-29, into which I include provisionally 2 ♀♀ from Primore, described below, and *Plexippus incognitus*

DOENITZ et STRAND, in BÖSENBERG et STRAND, 1906 from Japan. There is also an undescribed species from Japan in the collection sent me by Professor YAGINUMA and another one described below from Primore.

#### 74. *Yaginumaella medvedevi* sp. n.

Primore and Ussuri: 90 ♂♂, 87 ♀♀ — Kedrovaya Pad' and River Kedrovka, single specimens also from Kangauz, Tigrovaya, Vladivostok, Vinogradovka, Kurile Islands: 1 ♂, 1 juv. ♀ — Kunashir Island, village Otradnoye (ZIN). North Korea: numerous ♀♀, ♂♂ — Myohyangsan, Hamjong-pukto, Onpho (IZPAN).

All the above mentioned specimens should be considered paratypes, with an exception for 1 ♀ with epigynum mounted into microscopic slide, collected from the upper course of Kedrovka River by sweeping by Mr. F. E. POPOV on 12. VIII. 1968 — being holotype; 1 ♂ from Kedrovaya Pad', collected by Mr. F. E. POPOV by sweeping on 10. VIII. 1968 is the allotype.

According to labels the majority of specimens lives in grass and shrubs, from which they were collected by sweeping; a few specimens were also taken from the forest litter.

The species can be recognized by the oval, almost round epigynum with broad flaps behind the copulatory opening, broad copulatory canals making 3/4 of a circle and passing then into heavily sclerotized spermathecae containing a number of irregular chambers (figs. 318–319). The structure of the ♂ copulatory organ is shown in figs. 320–322, it differs from other species by posterior origin of the embolus and more broad, flattened cymbium.

#### 75. *Yaginumaella striatipes* (GRUBE, 1861) (?).

*Attus striatipes* GRUBE, 1861.

*Pellenes striatipes*: PRÓSZYŃSKI 1971.

Primore: 1 ♀ Shkotovo area, 300–400 m above sea, with a cocoon attached to the needles of *Abies* sp., 3. VII. 1968, leg. F. E. POPOV; Liman of Amur (Tatar Sound) shores: 1 ♀ Ozerpakh Peninsula, 14. VII. 1915, leg. C. CHERNOVA (ZIN).

An apparently coniferous tree dweller, adapted to cooler climate. Differs from the previous species by much narrower position of sclerotized flaps of epigynum (fig. 323), broader and straight copulatory canals, coming radially and passing into a few narrow, irregular coils whose sclerotization does not differ from that of anterior parts of the copulatory canals (fig. 324).

I put these ♀♀ provisionally into *Yaginumealla striatipes* (GRUBE, 1861) whose ♂ was already described from the same geographic region as the second ♀ (Nikolaevsk na Amure) — see PRÓSZYŃSKI 1971: 219, ff. 28–29. I hope that this classification will be confirmed by new material.

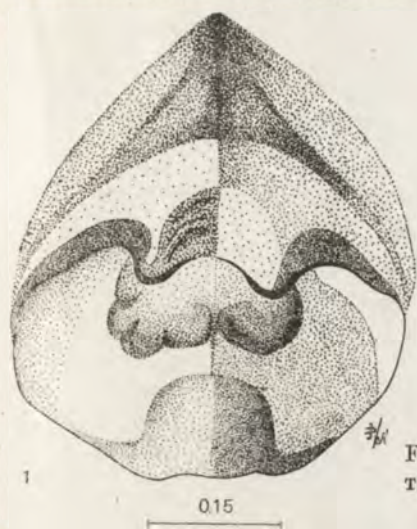
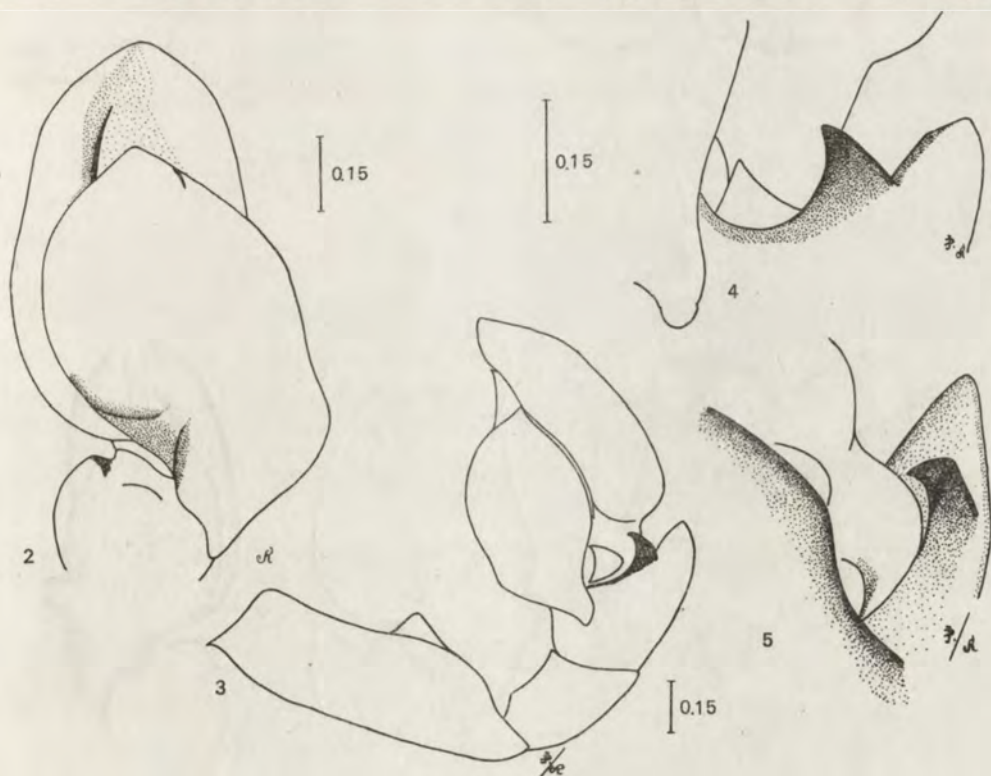
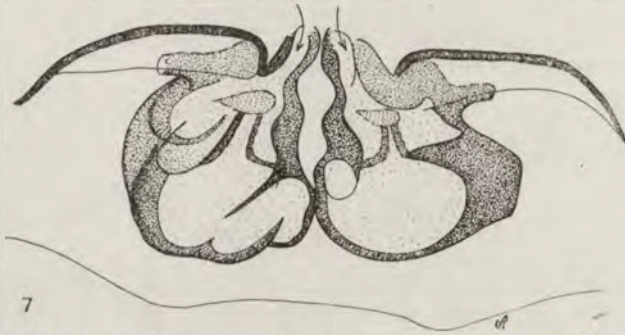


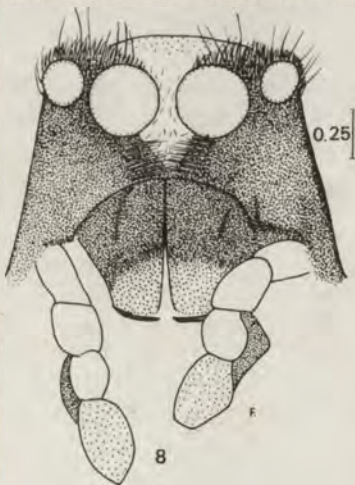
Fig. 1 *Aelurillus lutosus* (Tys-tschenko, 1965) — holotype, epigynum.



Figs. 2-5. *Aelurillus m-nigrum* (Kulczyński in Chyzer et Kulczyński, 1891). ♂ — copulatory organ.

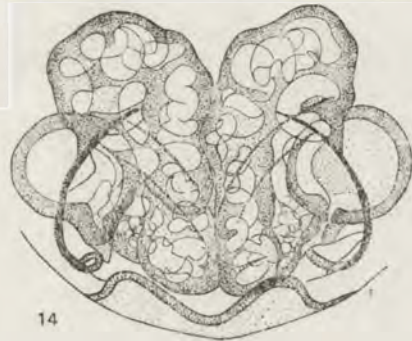
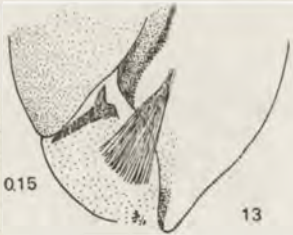
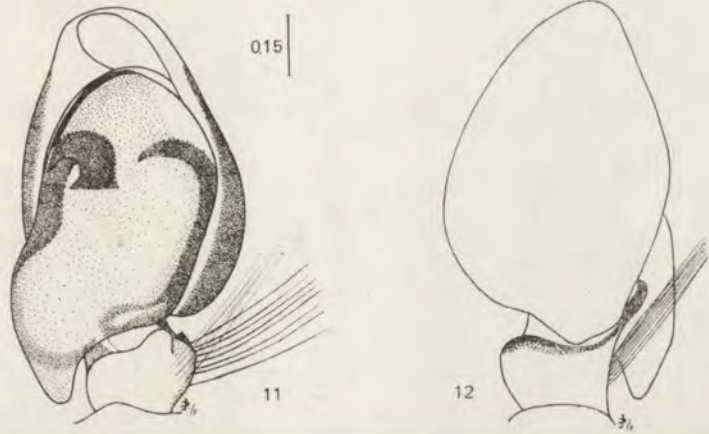


Figs. 6-7. *Aclurillus m-nigrum*. Epigynum and its internal structures.



Figs. 8-10. *Aclurillus* sp. ♂ - frontal view and palpus.





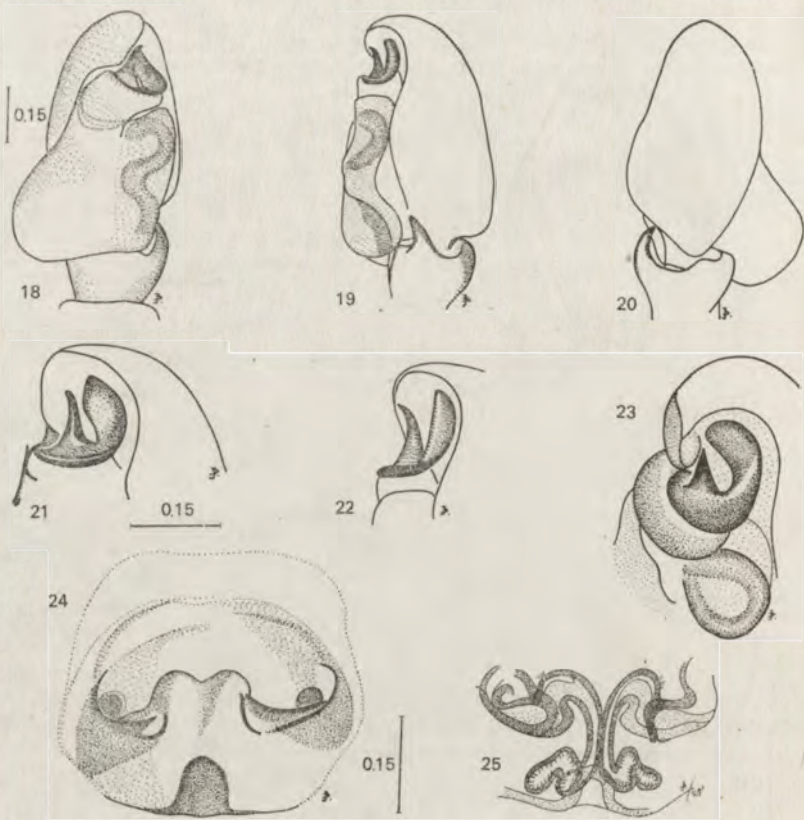
Figs. 11-14. *Aelurillus tartaricus* (CHARITONOV, 1946). Types. 11-13. ♂ - copulatory organ. 14 - ♀ - microscopic preparation of epigynum.



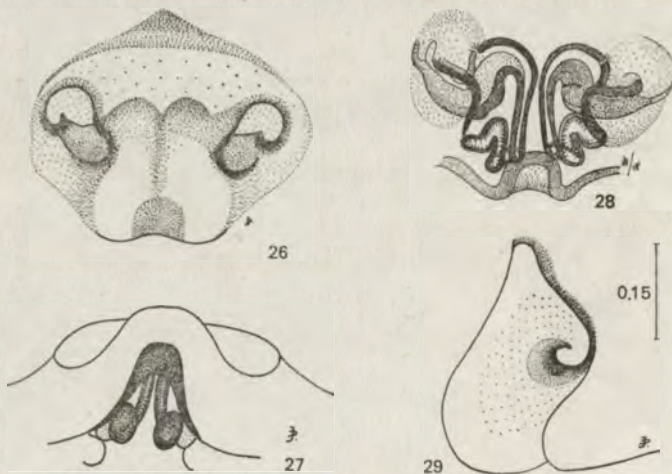
Figs. 15-16. *Bianor aurocinctus* (OHLERT, 1865). Epigynum and its internal structures.



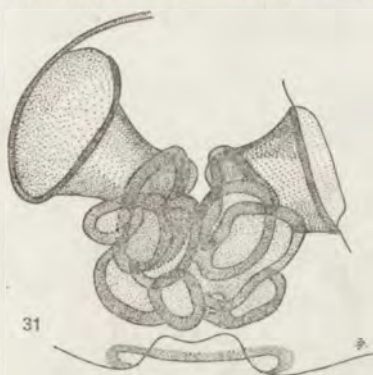
Fig. 17. *Carrhotus xanthogramma* (LATREILLE, 1819), ♀ - epigynum.



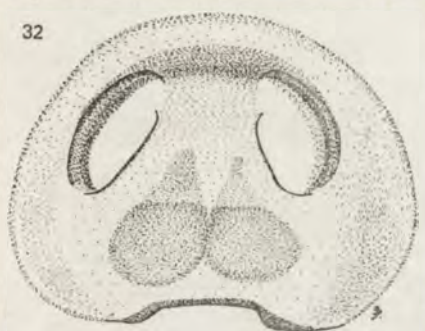
Figs. 18-25. *Dendryphantès atratus* (Karsch, 1881). 18-23. ♂ — copulatory organ. 24-25. ♀ — epigynum and its internal structures.



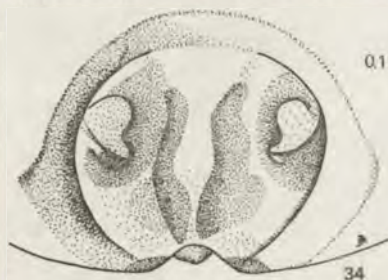
Figs. 26-29. *Dendryphantès atratus*. ♀ — from Hanka Lake, epigynum in ventral, posterior and lateral views and its internal structures.



Figs. 30-31. *Dendryphantes biankii* sp. n. ♀ — holotype from Yakutia, epigynum and its internal structures.



Figs. 32-33. *Dendryphantes biankii* sp. n. ♀ — paratype from Mongolia, epigynum and its internal structures.



Figs. 34-35. *Dendryphantes czekanowskii* sp. n. ♀ — holotype and its internal structures.

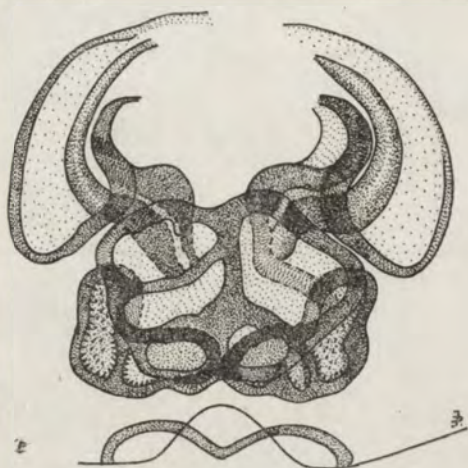
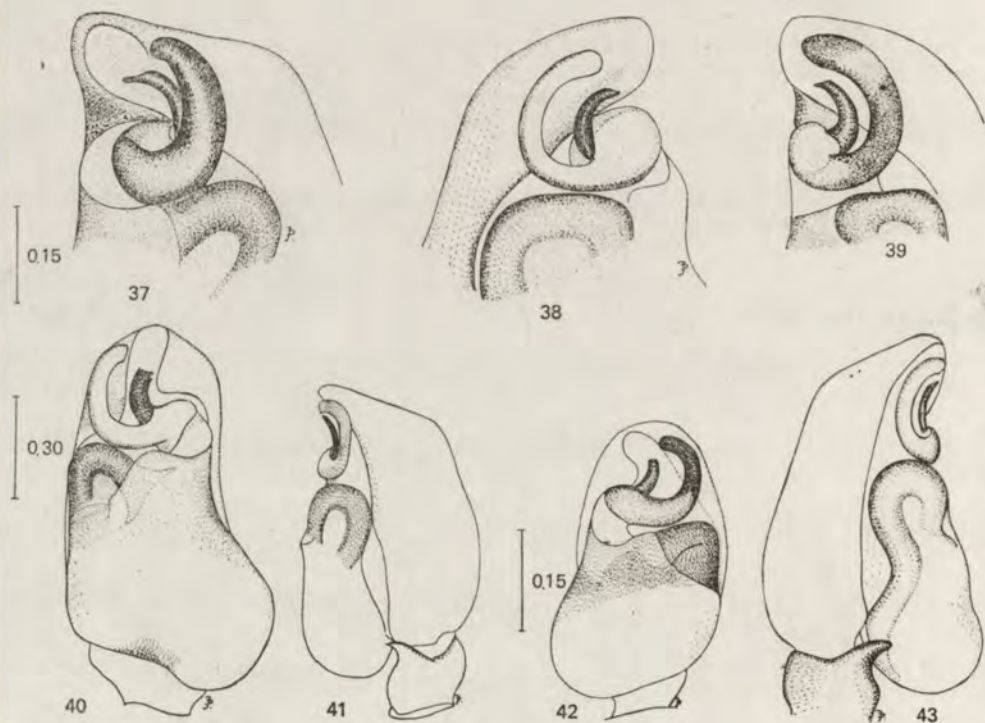
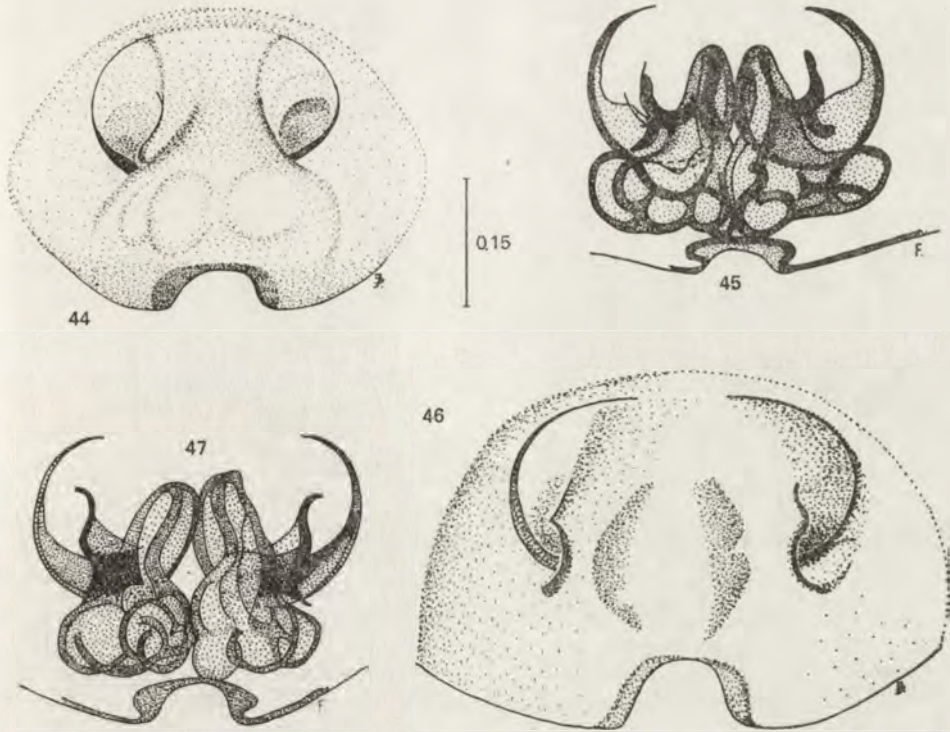


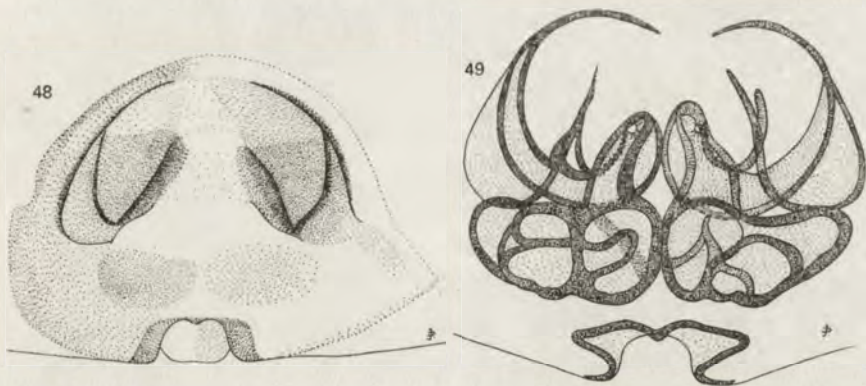
Fig. 36. *Dendryphantes hastatus* (CLERCK, 1758). ♀ - internal structures of epigynum



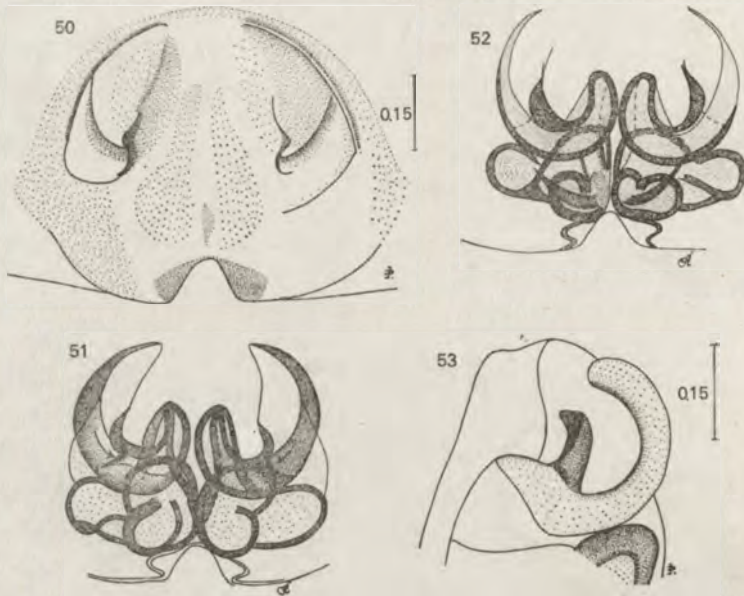
Figs. 37-43. *Dendryphantes fusconotatus* (GRUBE, 1861) ♂ - copulatory organ: 37 - paralectotype of *D. thorelli*; 38-40. - holotype of *Dendryphantes fusconotatus* (GRUBE, 1861); 41-43 Mongolian specimen.



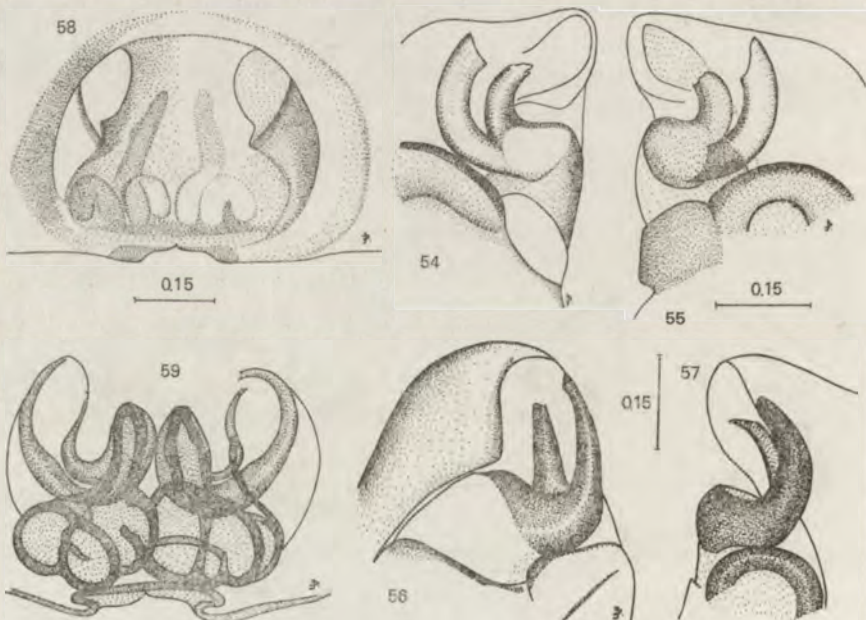
Figs 44–47. *Dendryphantes fusconotatus*—epigynum and its internal structures: 44–45 lectotype; 46–47 Mongolian specimen.



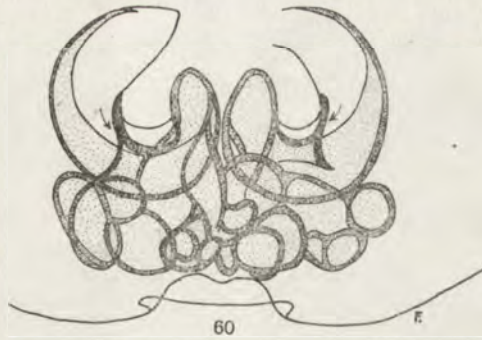
Figs. 48–49. *Dendryphantes fusconotatus*—♀ from Liman of Amur, epigynum and its internal structures.



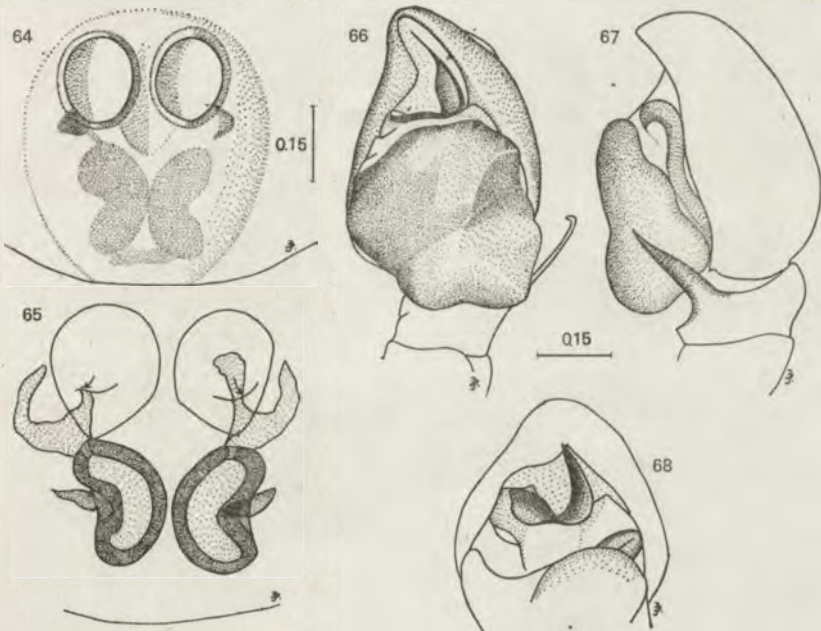
Figs. 50–53. *Dendryphantes fusconotatus*, Dzhanga specimens: 50–52 epigynum and its internal structures in ventral and dorsal views; 53 – ♂ embolus and conductor.



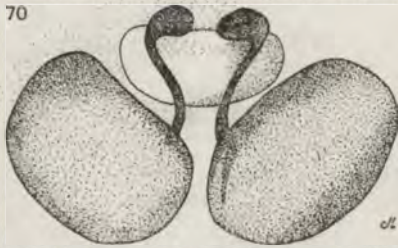
Figs. 54–59. *Dendryphantes fusconotatus*, Yakutia specimens: 54–57 details of embolus and conductor of ♂♂ (54–55 with broken tips); 58–59 ♀ – epigynum and its internal structures.



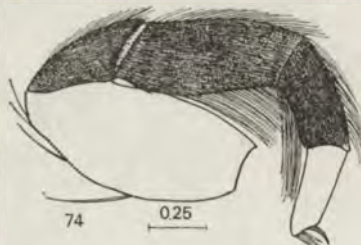
Figs. 60–63. *Dendryphantes fusconotatus*: 60 ♀ from Amur, GRUBE collection — internal structures of epigynum; 61–63 dorsal abdominal pattern of ♀, ♂ and a juvenile specimen from Mongolia



Figs. 64–68. *Euophrys erratica* (WALCKENAER, 1825): 64–65 ♀ — epigynum and its internal structures; 66–68 ♂ — copulatory organ.

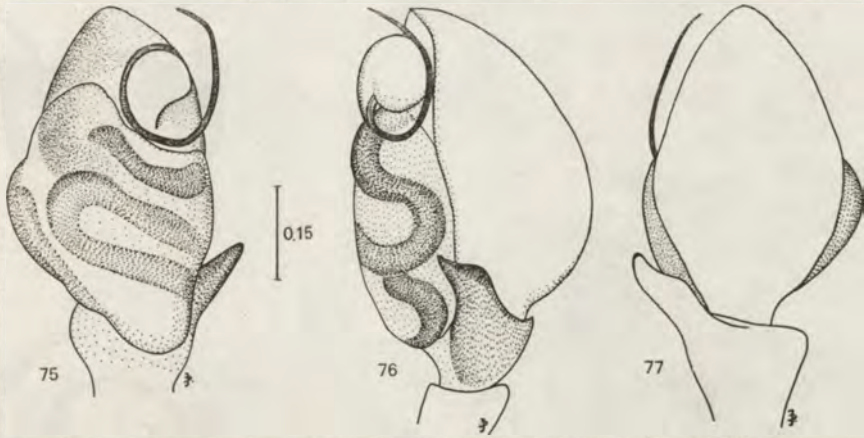


Figs. 69-70. Epigynum of two species of *Euophrys*: 69 - *Euophrys frontalis* (WALCKENAER, 1802); 70 - *Euophrys thorelli* KULCZYŃSKI in CHYZER et KULCZYŃSKI, 1891.

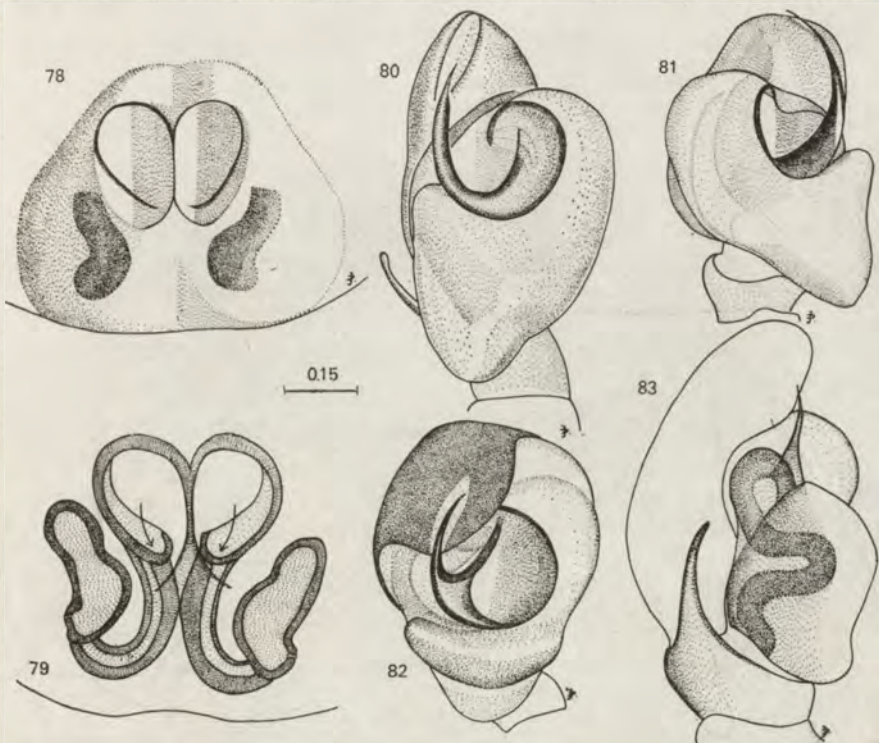


Figs. 71-74. *Euophrys frontalis* (WALCKENAER, 1802), ♂ - copulatory organ and leg I.

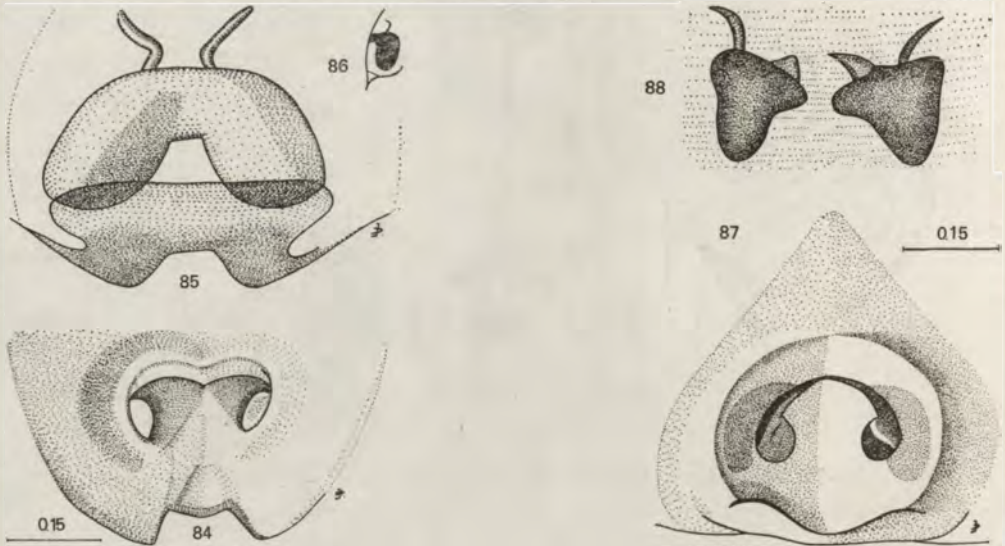




Figs. 75-77. *Euophrys nigrita* (THORELL, 1875), ♂ — copulatory organ.



Figs. 78-83. *Euophrys obsoleta* (SIMON, 1868): 78-79 ♀ — epigynum and its internal structures; 80-83 ♂ — copulatory organ.



Figs. 84-86. *Evarcha albaria* (L. KOCH, 1878). Epigynum: dorsal and ventral views, as well as diagram of the saggital section of epigynum.

Figs. 87-88. *Evarcha albopilosa* (TYSTSCHENKO, 1965. Holotype. Epigynum in ventral and dorsal views (the spermathecae are surrounded by white, unmacerated tissues in the latter).

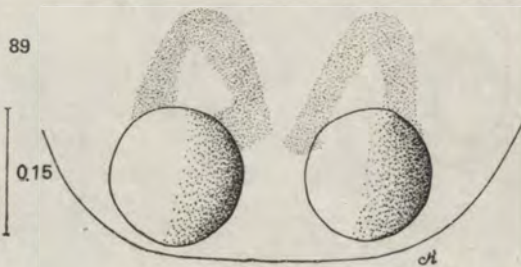
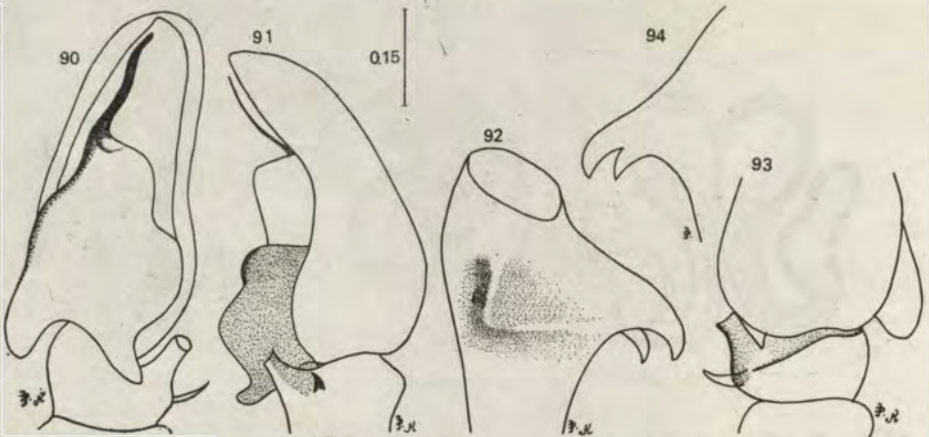
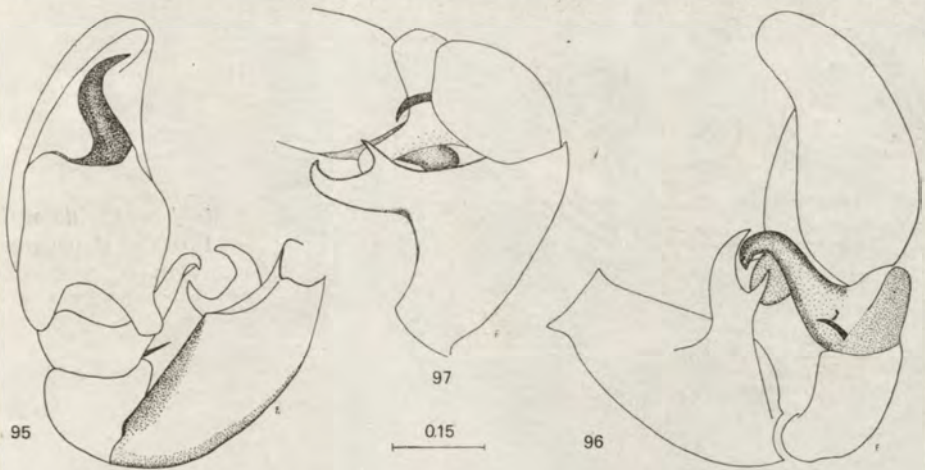


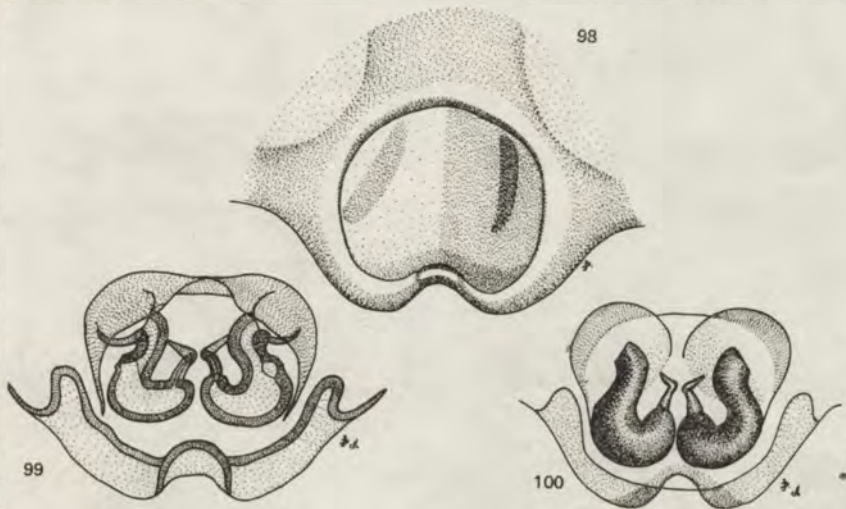
Fig. 89. *Heliophanus auratus* C. L. KOCH, 1848. ♀ from Semireche, epigynum.



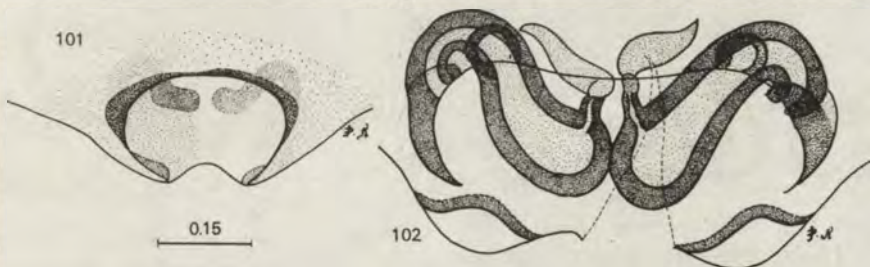
Figs. 90-94. *Heliophanus auratus*. ♂ from Semireche, palpus.



Figs. 95-97. *Heliophanus auratus*. ♂ from Murgab, palpus.



Figs. 98-100. *Heliophanus baicalensis* KULCZYŃSKI, 1895. ♀ — epigynum, ventral, dorsal views and internal structures.



Figs. 101-102. *Heliophanus camtschadalicus* KULCZYŃSKI, 1885. Epigynum and its internal structures, spermathecae are presumably somewhat displaced during moulting of prepatriation.

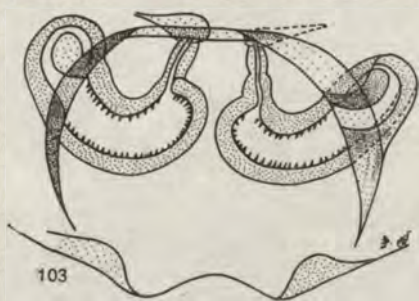
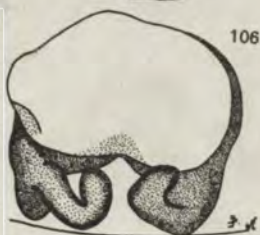
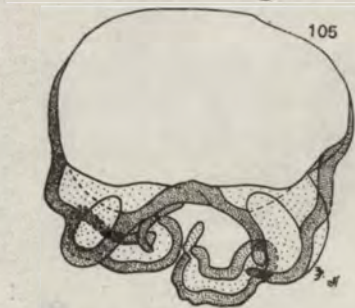
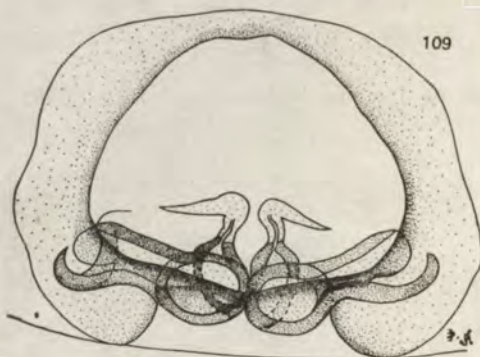


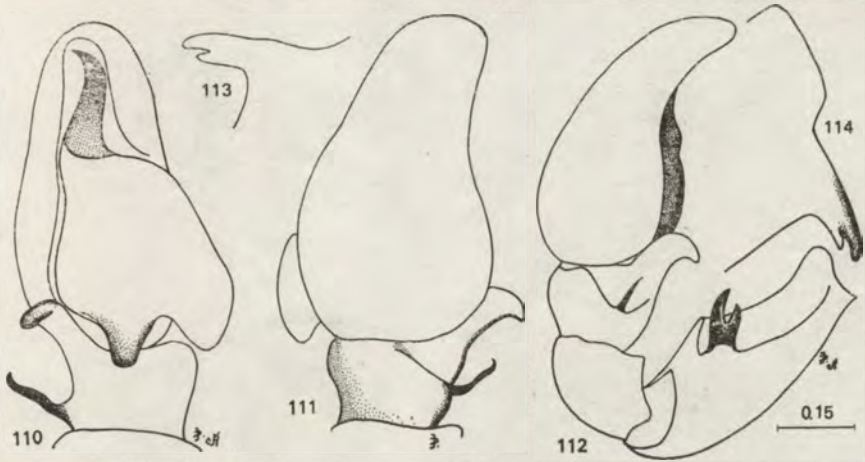
Fig. 103. *Heliophanus dampfi*  
SCHENKEL, 1923. Internal structures  
of epigynum.



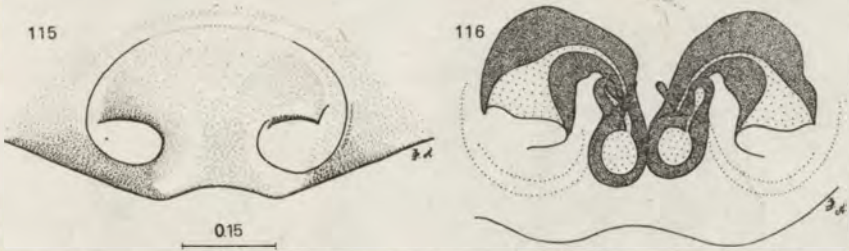
Figs. 104–106. *Heliophanus kochi*  
SIMON, 1868. ♀ — epigynum in  
ventral and dorsal views, internal  
structures



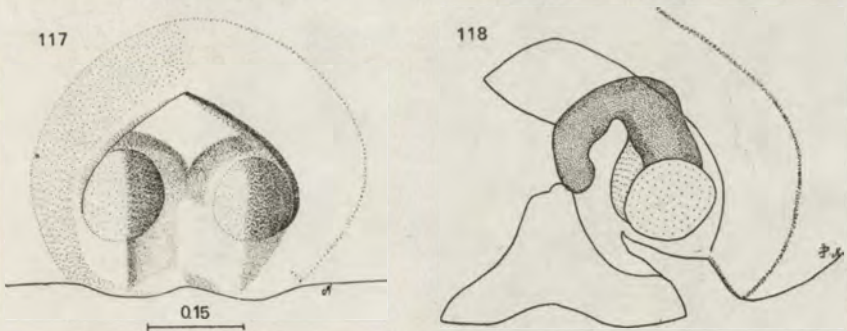
Figs. 107–109. *Heliophanus lineiventris*  
SIMON, 1868. ♀ — from Primore, epi-  
gynum in dorsal and ventral views,  
internal structures.



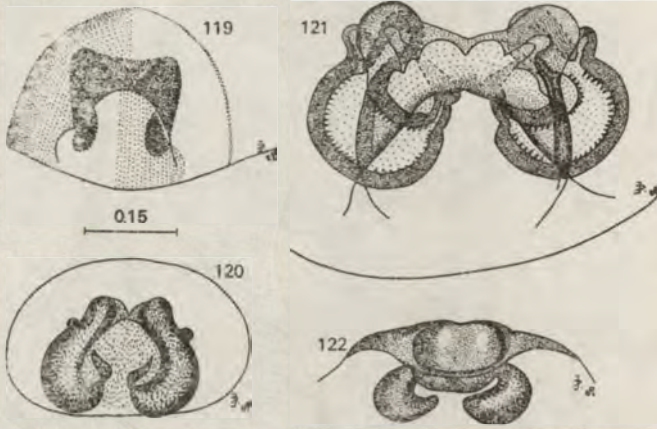
Figs. 110–114. *Heliophanus lineiventris* ? ♂ – from Southern European USSR, copulatory organ.



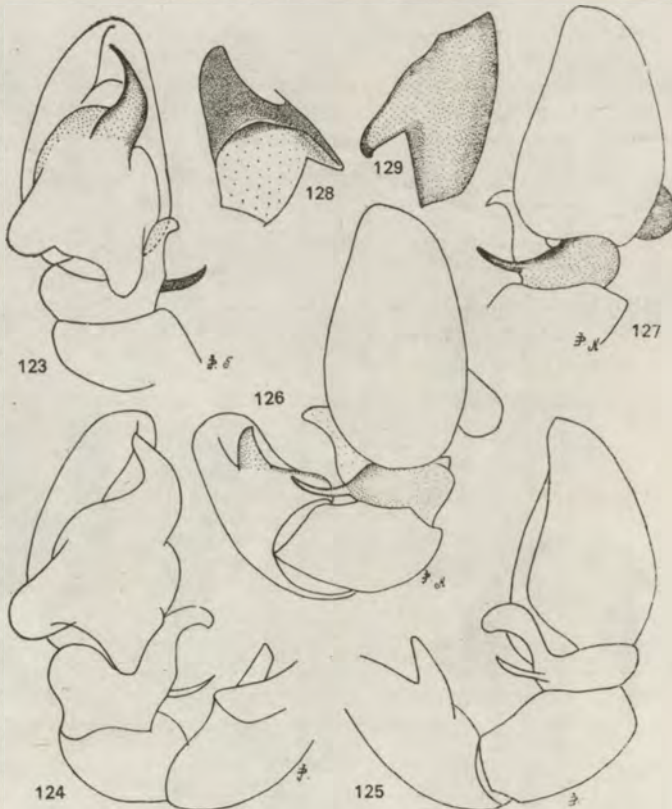
Figs. 115–116. *Heliophanus simplex* SIMON, 1868. ♀ – from Crimea, epigynum and its internal structures.



Figs. 117–118. *Heliophanus tribulosus* SIMON, 1868?. ♀ – epigynum and a diagrammatic sketch of its damaged, internal structures.



Figs. 119–122. *Heliophanus ussuricus* KULCZYŃSKI, 1895. ♀ – epigynum, ventral, dorsal and posterior views, internal structures



Figs. 123–129. *Heliophanus ussuricus* KULCZYŃSKI, 1895. ♂ – copulatory organ.

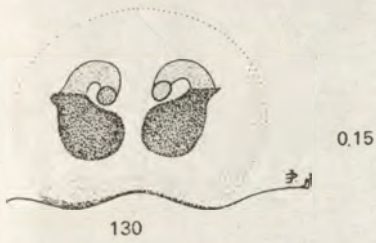
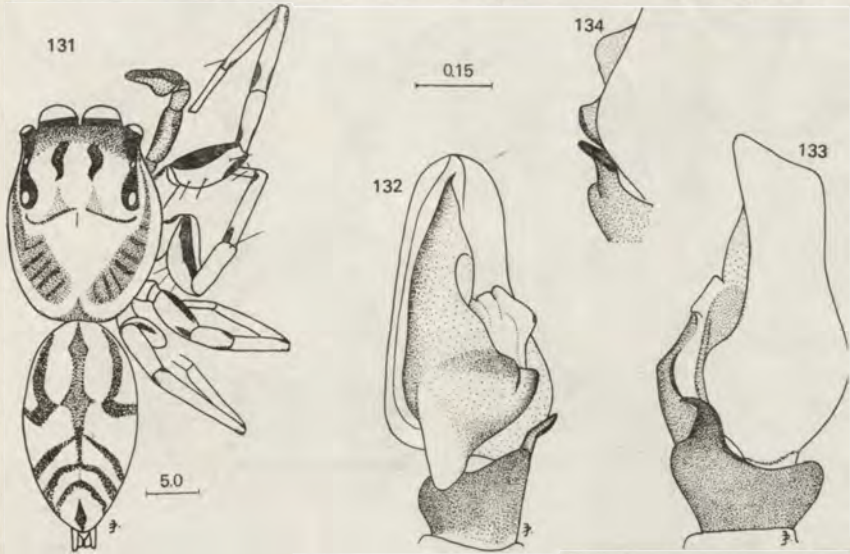
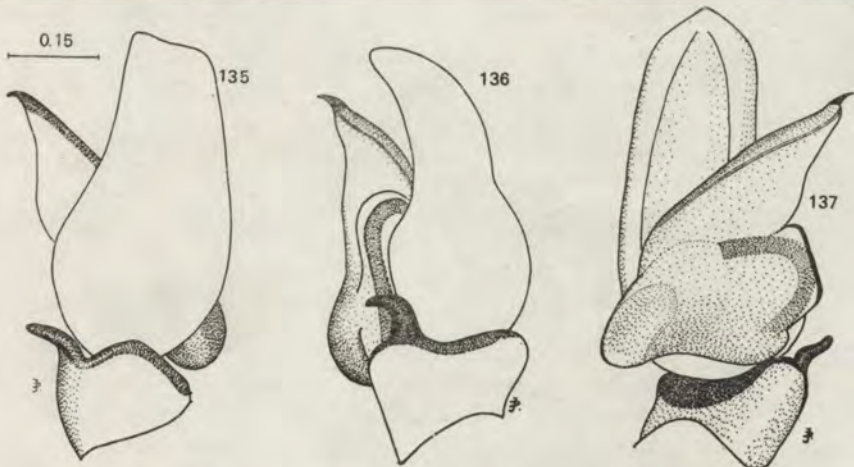


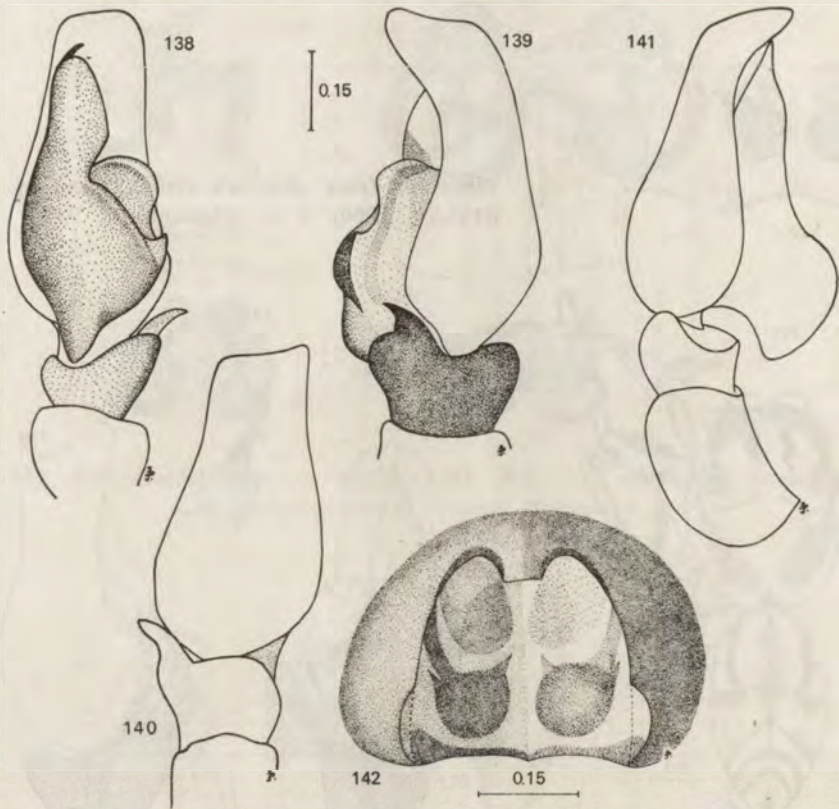
Fig. 130. *Icius abnormalis* (BÖSENBERG et STRAND, 1906). ♀ - epigynum



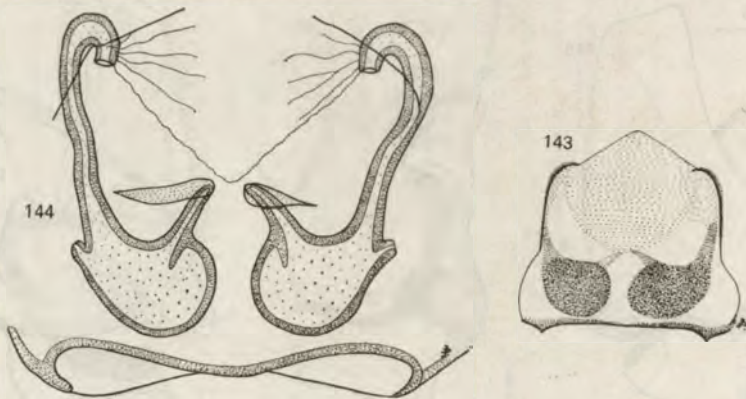
Figs. 131-134. *Icius castriesianus* (GRUBE, 1861). ♂ - general appearance and copulatory organ.



Figs. 135-137. *Icius castriesianus*. ♂ - copulatory organ with bulbus turned some 45°.

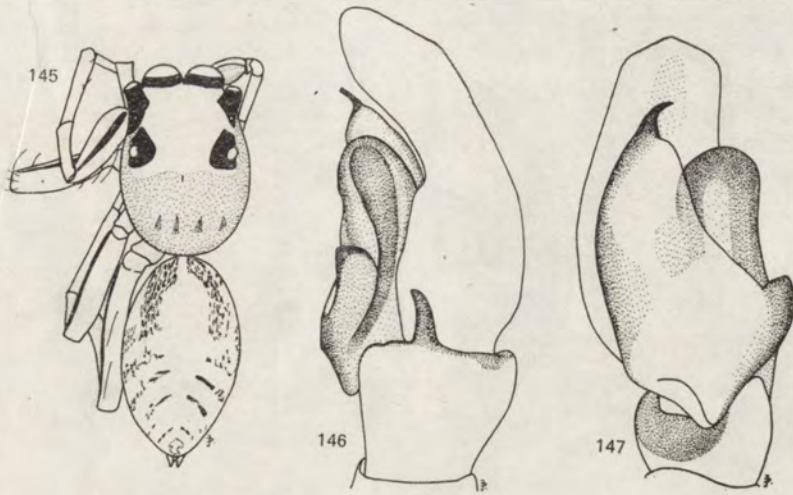


Figs. 138–142. *Icius castriesianus* – specimens from Rumania, presumably not conspecific with those from Primore. 138–141, ♂ – copulatory organ, 142, ♀ – epigynum.

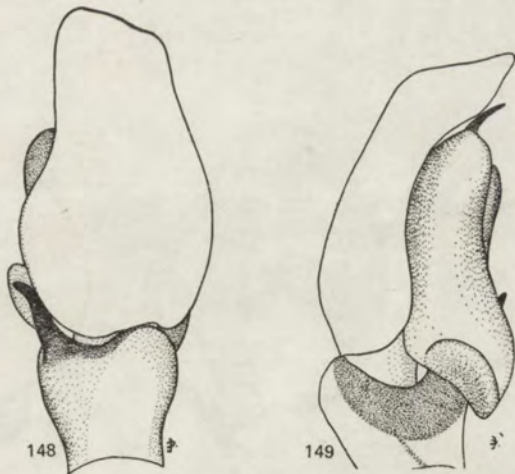


Figs. 143–144. *Icius difficilis* (BÖSENBERG et STRAND, 1906). ♀ – epigynum and its internal structures.

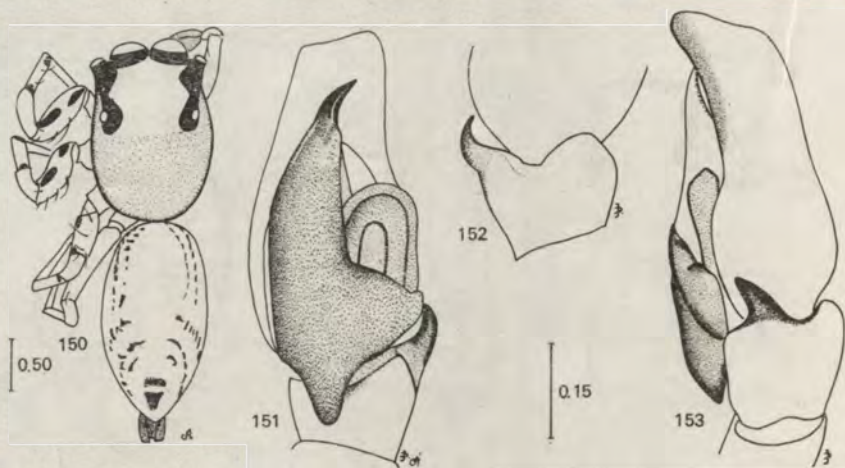




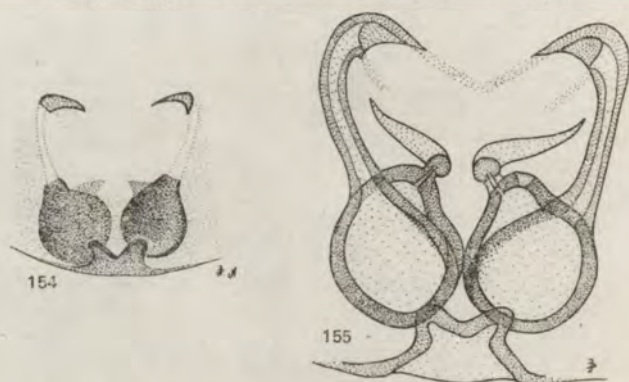
Figs. 145-147. *Icius difficilis*. ♂ - general appearance and copulatory organ.



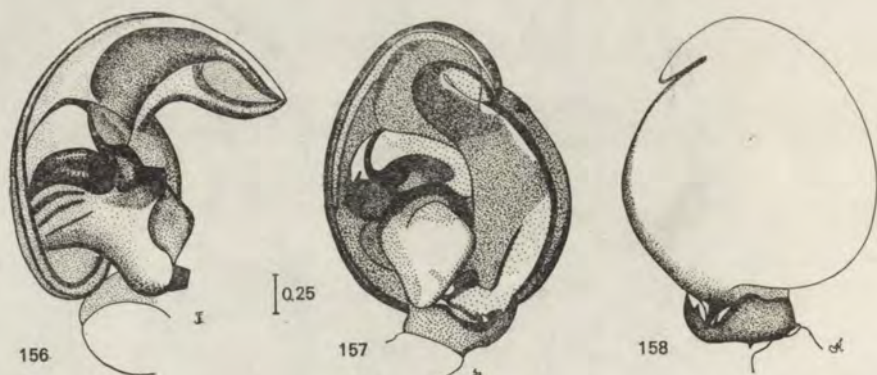
Figs. 148-149. *Icius difficilis*. ♂ - copulatory organ.



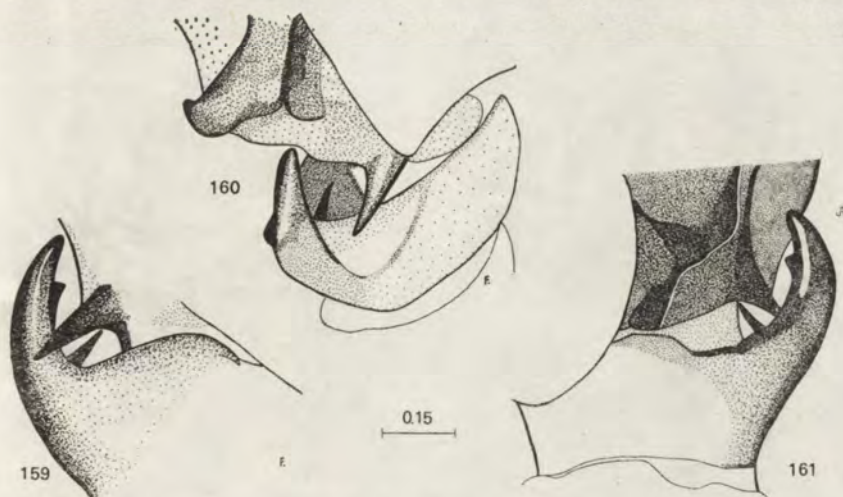
Figs. 150–153. *Icius popovi* sp. n. ♂ – general appearance and copulatory organ.



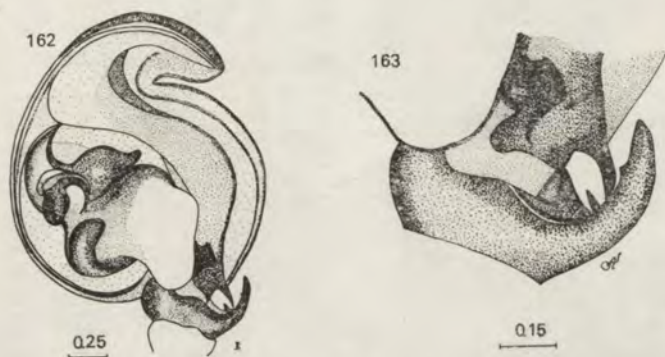
Figs. 154–155. *Icius* sp. ♀ – of uncertain position, epigynum and its internal structures.



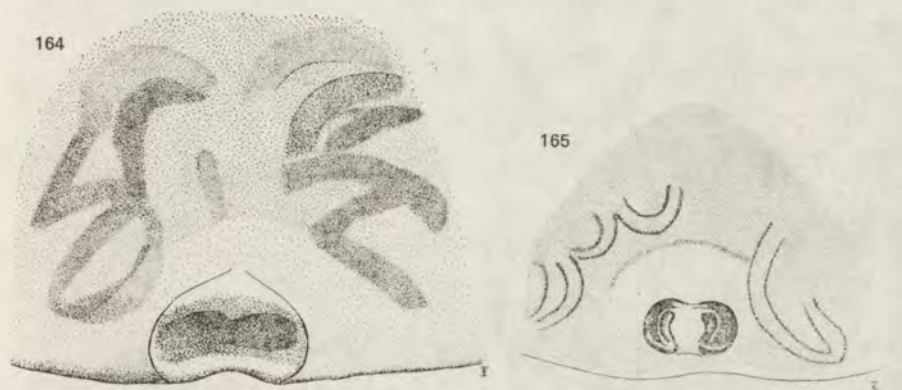
Figs. 156–158. *Marpissa dybowskii* KULCZYŃSKI, 1895. ♂ – copulatory organ.



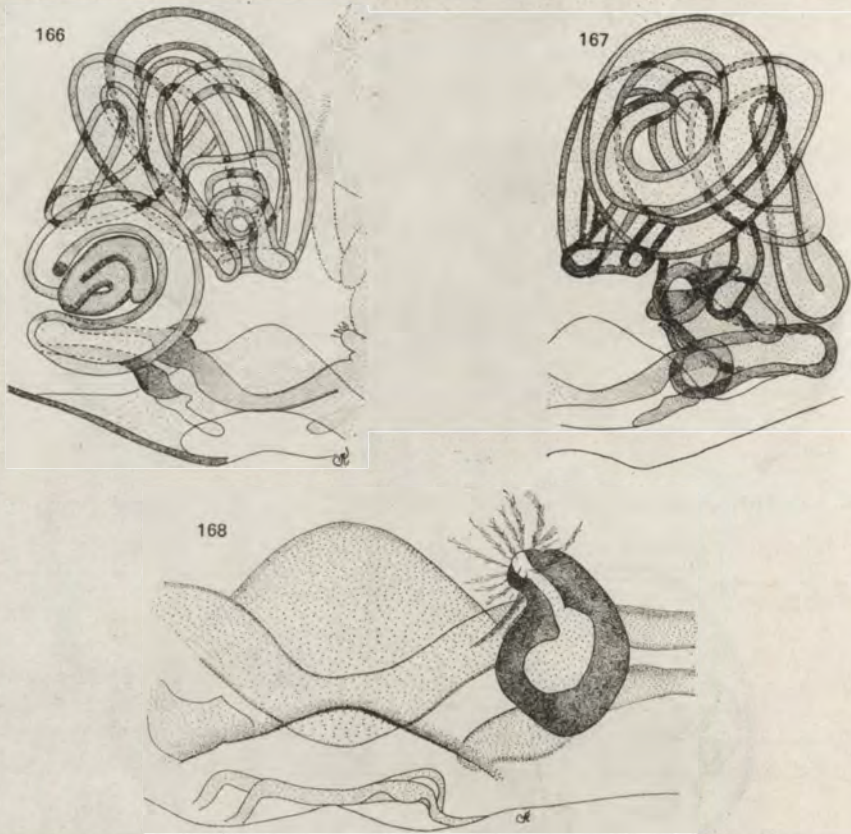
Figs. 159-161. *Marpissa dybowskii*. ♂ — further details of the copulatory organ.



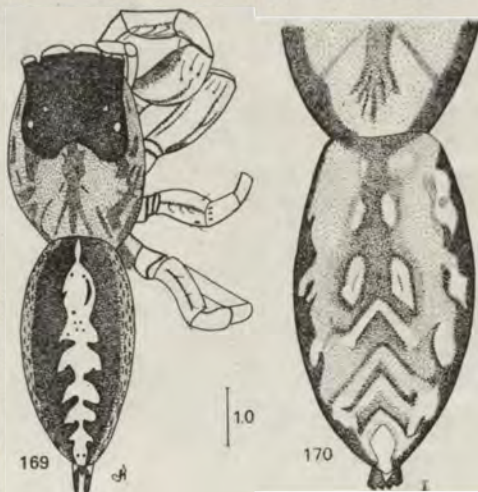
Figs. 162-163. *Marpissa dybowskii*. ♂ from Ussuri — copulatory organ.



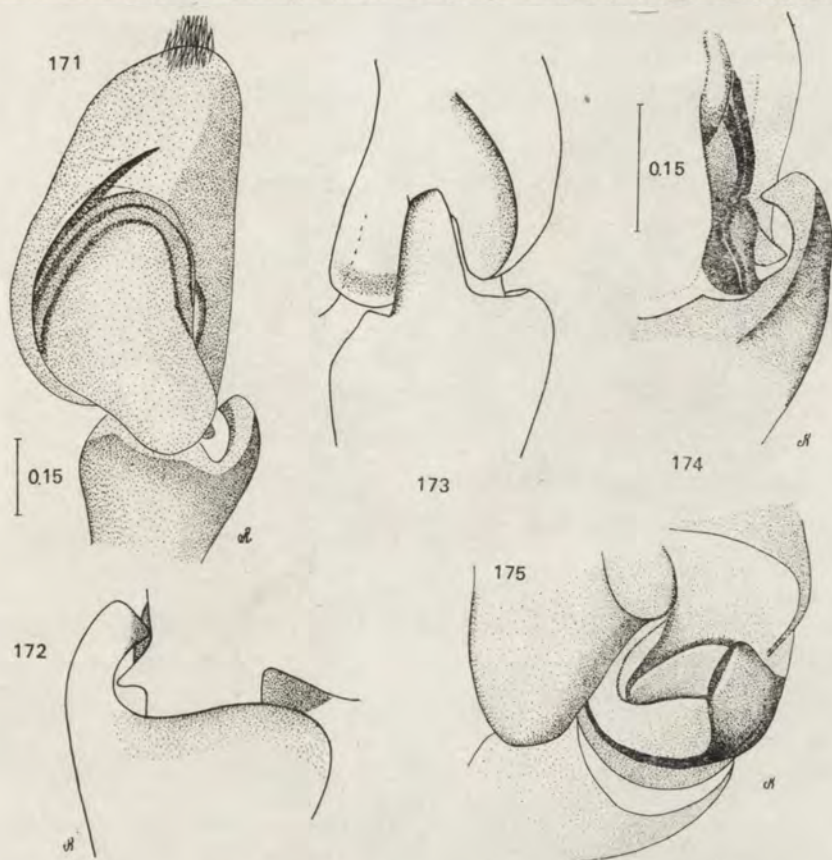
Figs. 164-165. Epigynum of *Marpissa dybowskii* (164) and *M. pomatia* (WALCKENAER, 1802) (165).



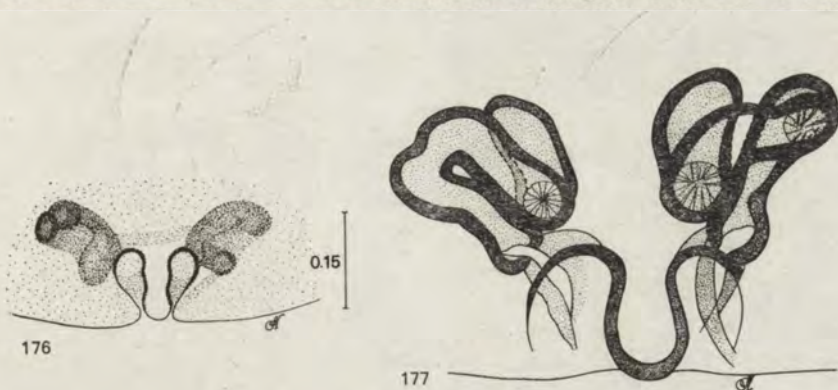
Figs. 166–168. *Marpissa dybowskii*. Internal structures of epigynum: ventral and dorsal views, an accessory gland and copulatory openings under higher magnification.



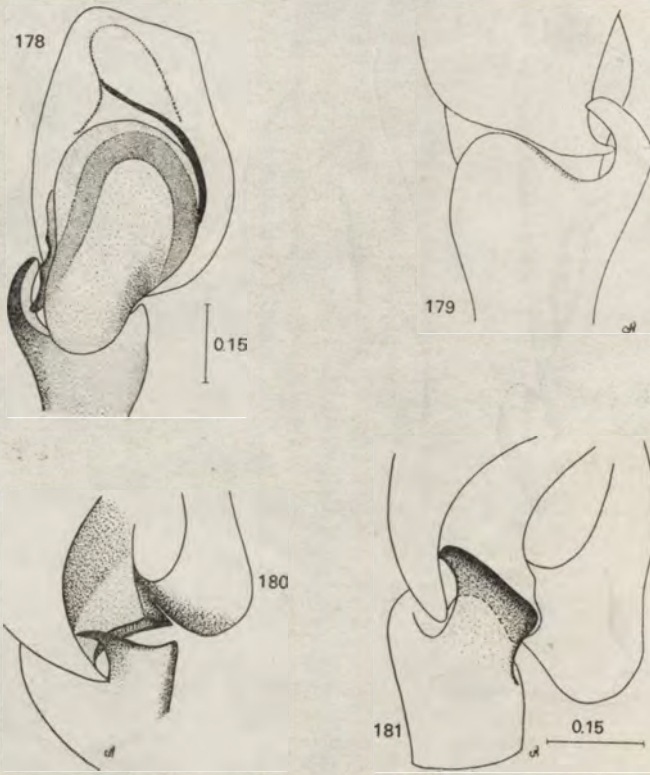
Figs. 169–170. General appearance of ♀ *Marpissa pomatia* and abdominal pattern of *Marpissa dybowskii* (170).



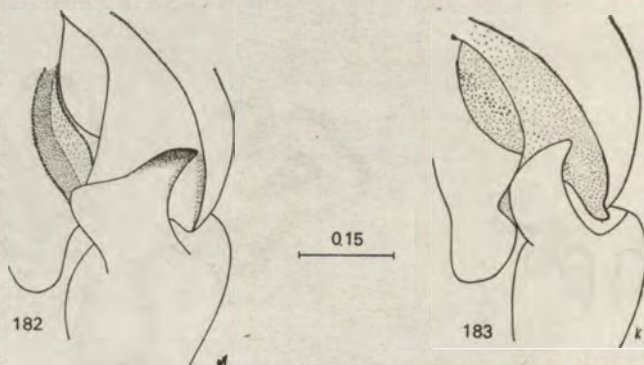
Figs. 171-175. *Marpissa nobilis* (GRUBE, 1861). ♂ - copulatory organ.



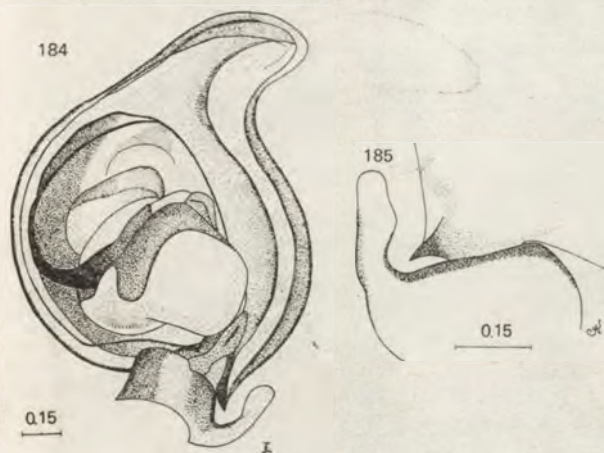
Figs. 176-177. *Marpissa nobilis*. ♀ - epigynum and its internal structures.



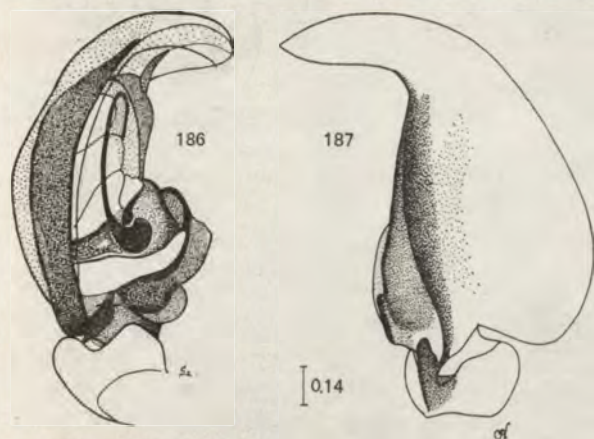
Figs. 178–181. *Marpissa salsophila* TYSTSCHENKO, 1965. ♂ – holotype, copulatory organ.



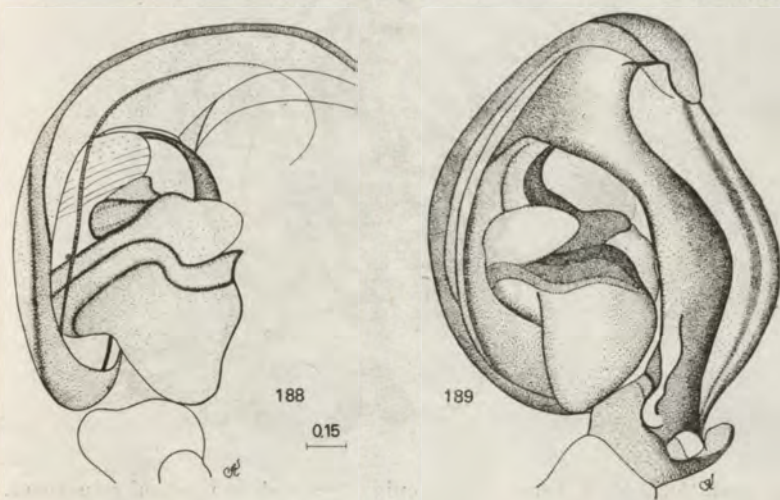
Figs. 182–183. Tibial apophyses of 2 ♂♂ of *Marpissa* of uncertain position, from the SPASSKY collection, one resembles *M. salsophila* (182), the second is rather similar to *M. canestrinii*.



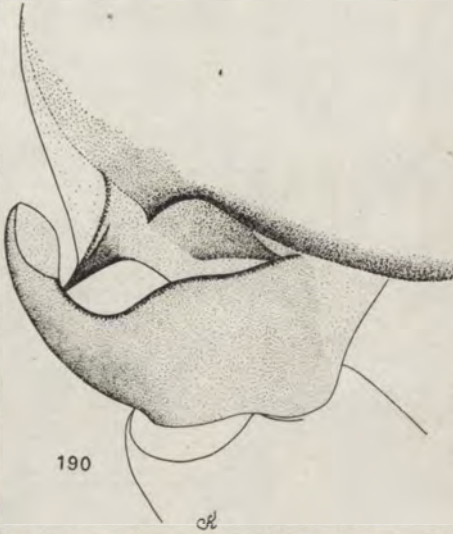
Figs. 184-185. *Marpissa pomatia* ♂ from Kadrovaya Pad' — copulatory organ.



Figs. 186-187. *Marpissa pomatia* ♂ from Kedrovaya Pad' — copulatory organ, other details.



Figs. 188-189. *Marpissa pomatia*. ♂ from Amur, copulatory organ, details.

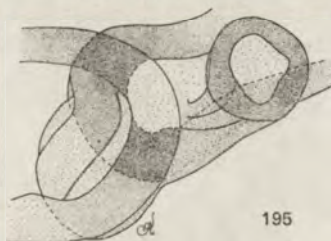
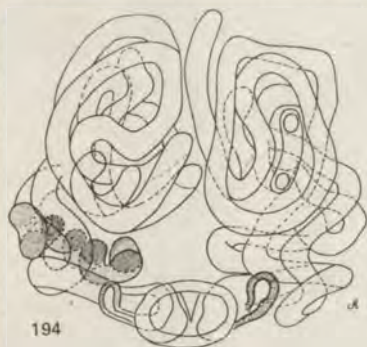


Figs. 190–191. *Marpissa pomatia*. ♂ from Amur, copulatory organ, further details.

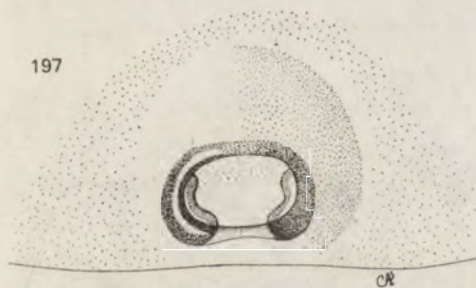


Figs. 192–193. *Marpissa pomatia*. ♀ from Amur Valley, epigynum and its internal structures.

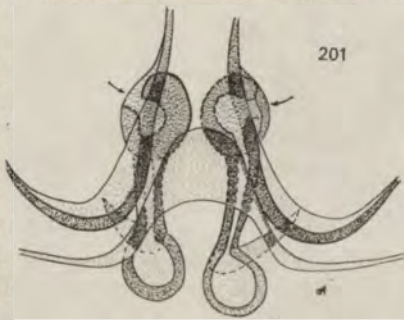




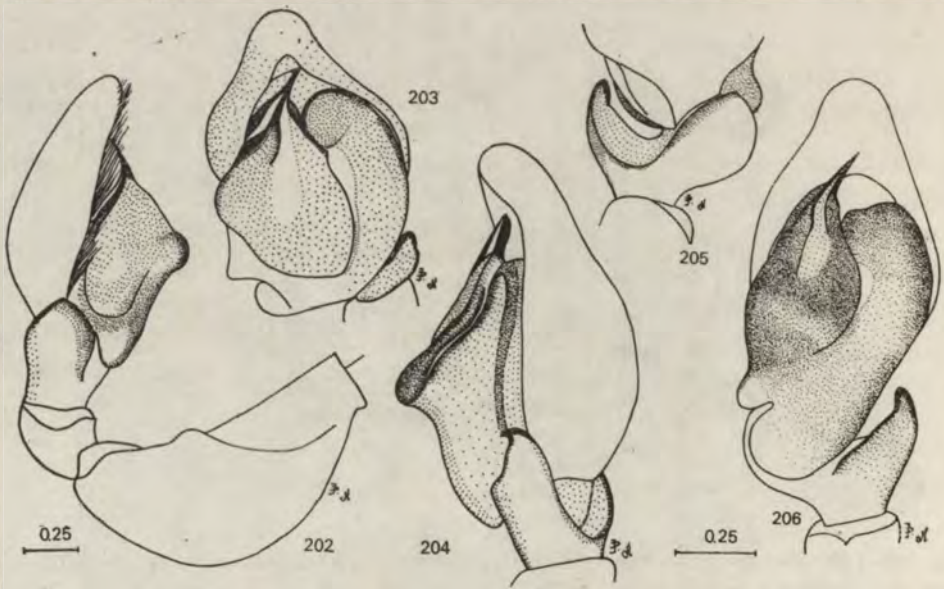
Figs. 194-196. *Marpissa pomatia*. ♀ — details of internal structure of epigynum: (194-195 specimen from Malvinskoye; 196 specimen from Amur Valley) — simplified drawing of the ventral layer of copulatory canals loops (194), copulatory openings and accessory gland in 2 ♀♀ seen under higher magnification.



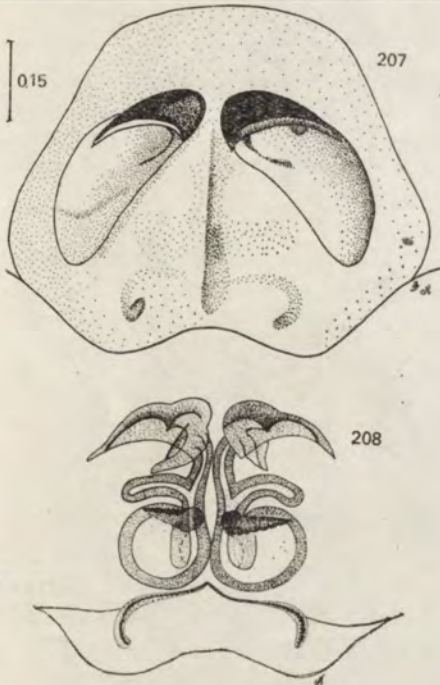
Figs. 197-199. *Marpissa pomatia*. ♀ from Dzhanga: epigynum, simplified drawing of ventral layer of copulatory canals loops, sclerotized endings of copulatory canals and details of entrance to these canals.



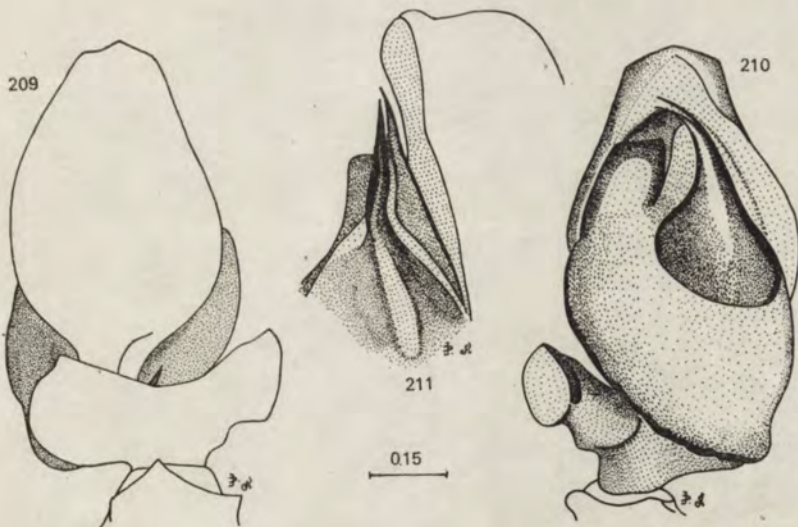
Figs. 200-201. *Menemerus marginatus* (Kroneberg, 1875). ♀ — epigynum and internal structures of its central part.



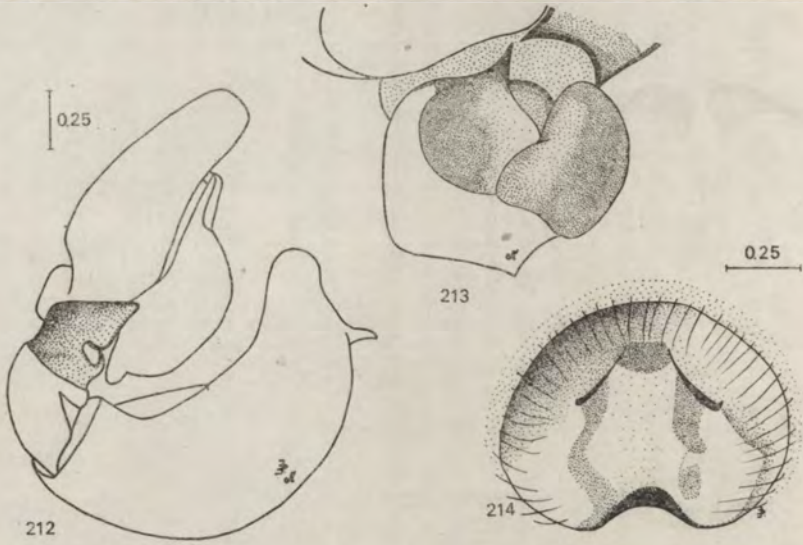
Figs. 202-206. *Menemerus marginatus*. ♂ — copulatory organ.



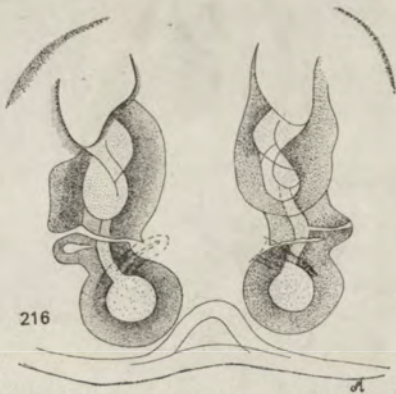
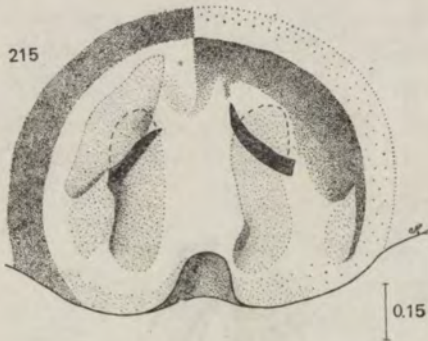
Figs. 207-208. *Menemerus semilimbatus* (HAHN, 1827). ♀ - epigynum and its internal structures.



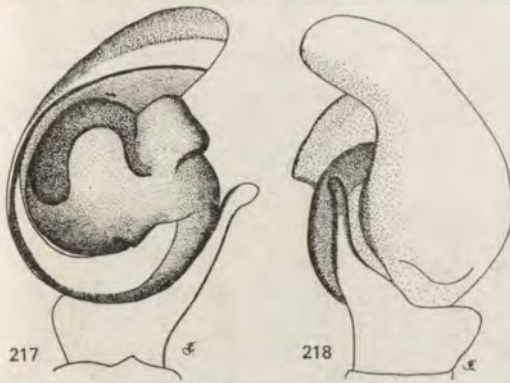
Figs. 209-211. *Menemerus taeniatus* (L. KOCH, 1876). ♂ - copulatory organ.



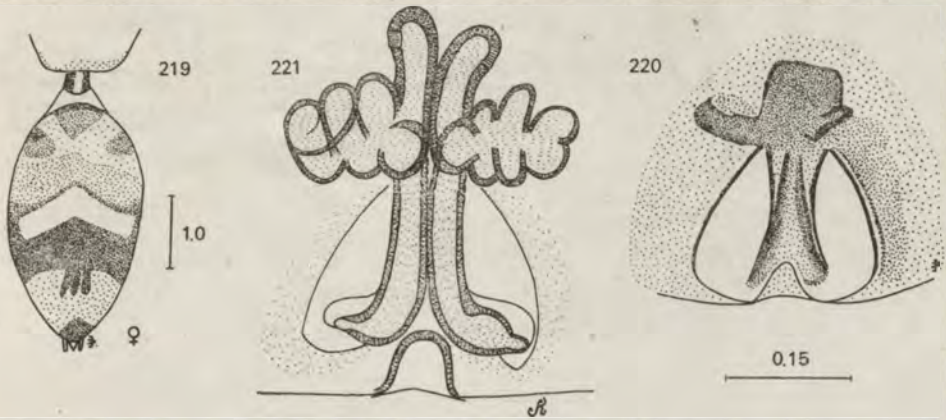
Figs. 212-214. *Menemerus taeniatus*. 212-213 ♂ - copulatory organ, 214 - ♀ - epigynum



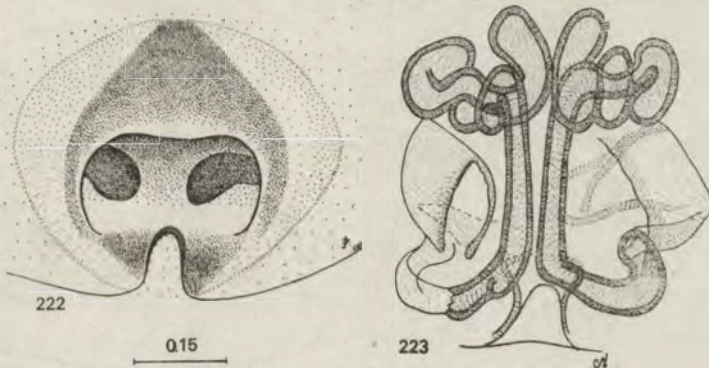
Figs. 215-216. *Menemerus taeniatus*. ♀ - epigynum and its internal structures.



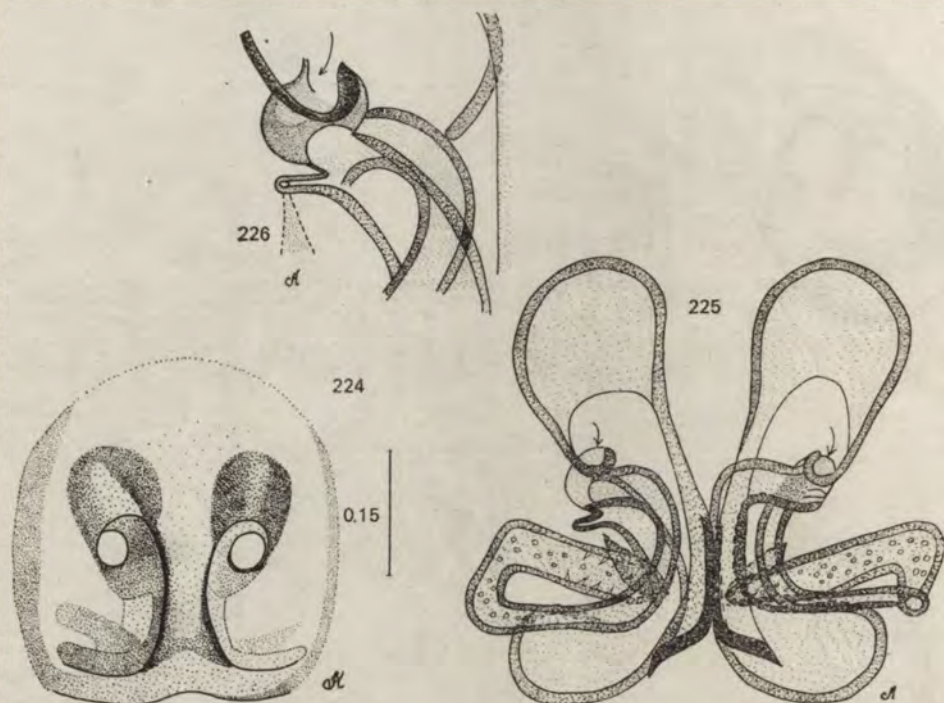
Figs. 217-218. *Mogrus antoni-nus* ANDREEVA, 1975. ♂ - copulatory organ.



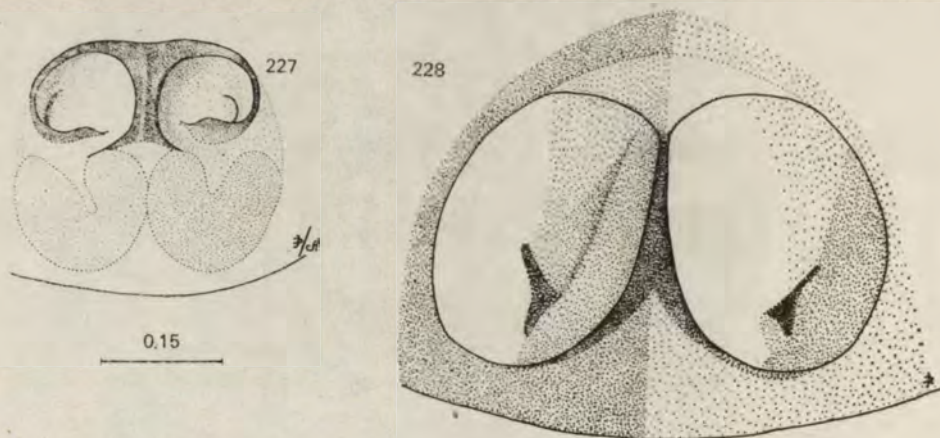
Figs. 219-221. *Myrmarachne formicaria* (DE GEER, 1778). ♀ - abdominal pattern, ventral view of epigynum and its internal structures.



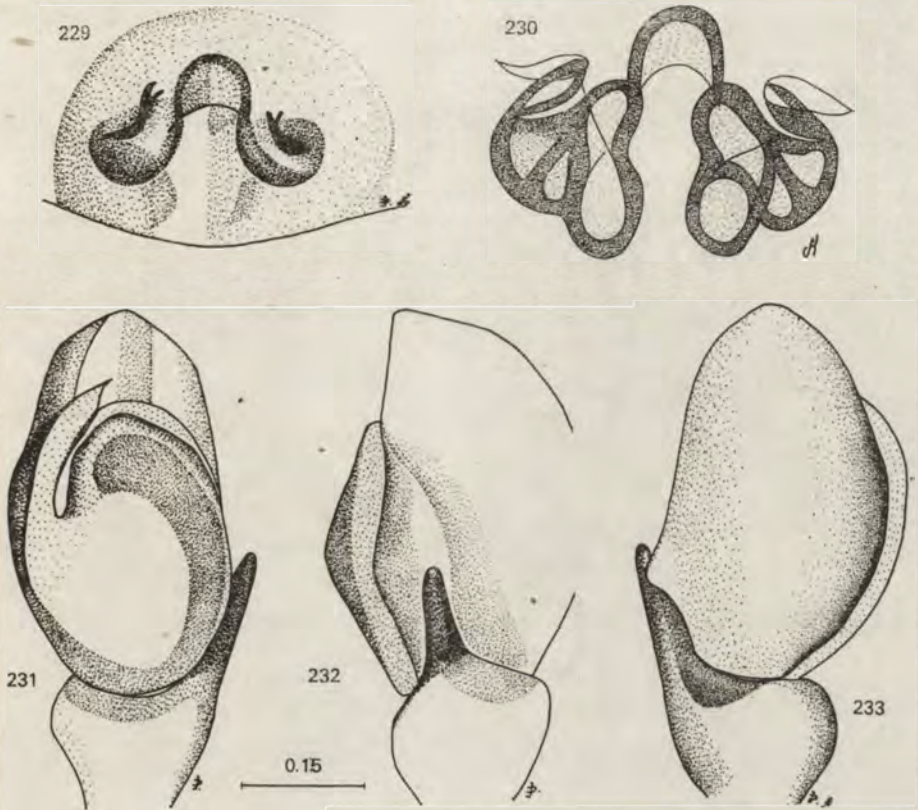
Figs. 222-223. *Myrmarachne lugubris* (KULCZYŃSKI, 1895). ♀ - epigynum and its internal structures.



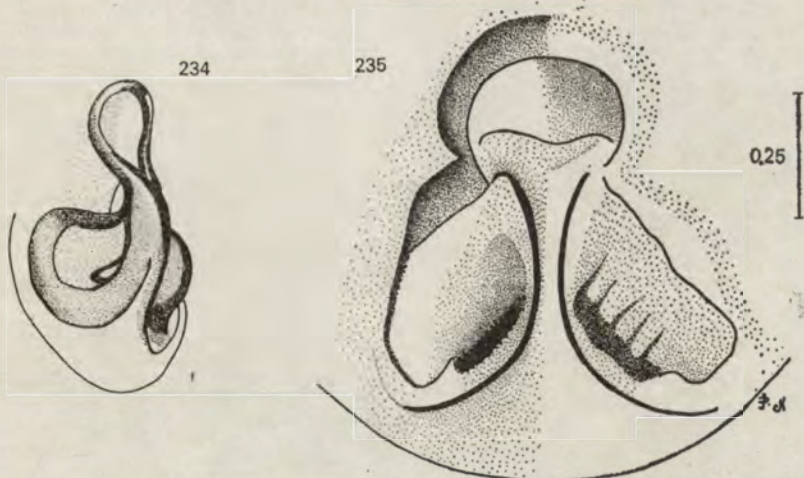
Figs. 224-226. *Neon levis* (SIMON, 1871). ♀ - epigynum, its internal structures and details of copulatory canal entrance.



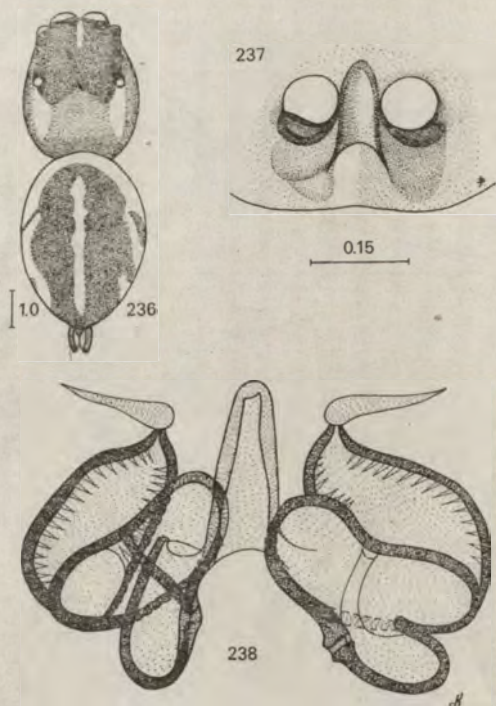
Figs. 227-228. Epigynum of ♀♀ of *Neon reticulatus* (BLACKWALL, 1853) and *Pellenes ignifrons* (GRUBE, 1861).



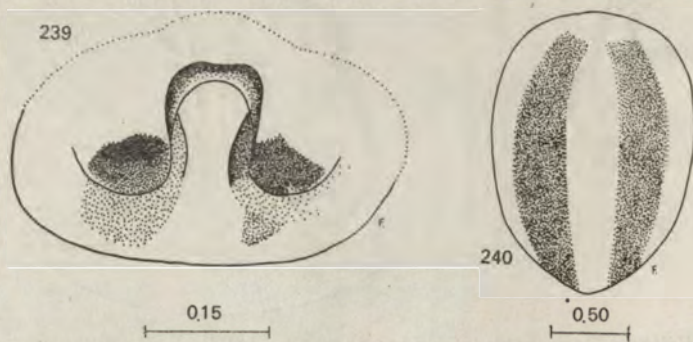
Figs. 229–233. *Pellenes nigrociliatus* (SIMON in L. KOCH, 1875)? ♀ – epigynum and its internal structures, ♂ – copulatory organ



Figs 234–235. *Pellenes tripunctatus* (WALCKENAER, 1802). ♀ – epigynum, ventro-lateral view (drawn from an European specimen) and ventral view (Alma-Ata specimen).

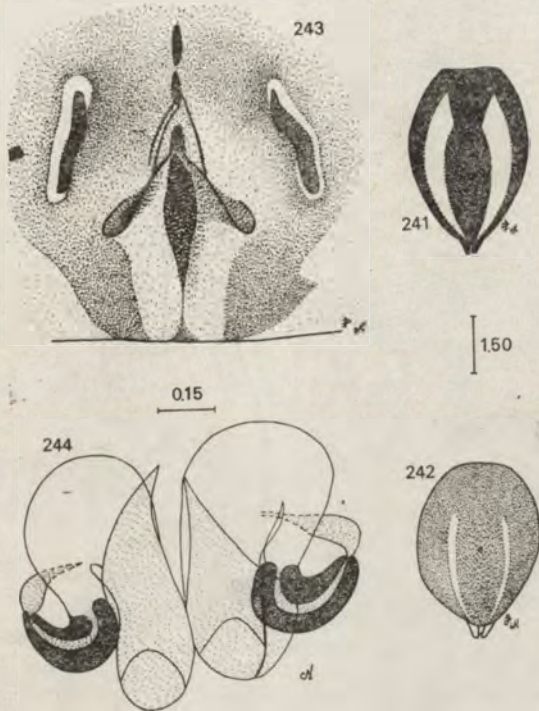


Figs. 236–238. *Pellenes* sp. 1. ♀ – general appearance, ventral view of epigynum and its internal structures.

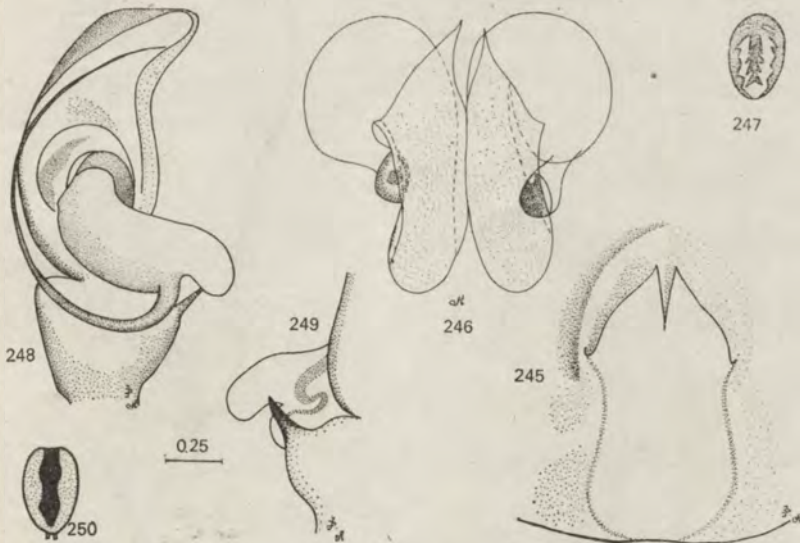


Figs. 239–240. *Pellenes* sp. 2. ♀ – epigynum and abdominal pattern.

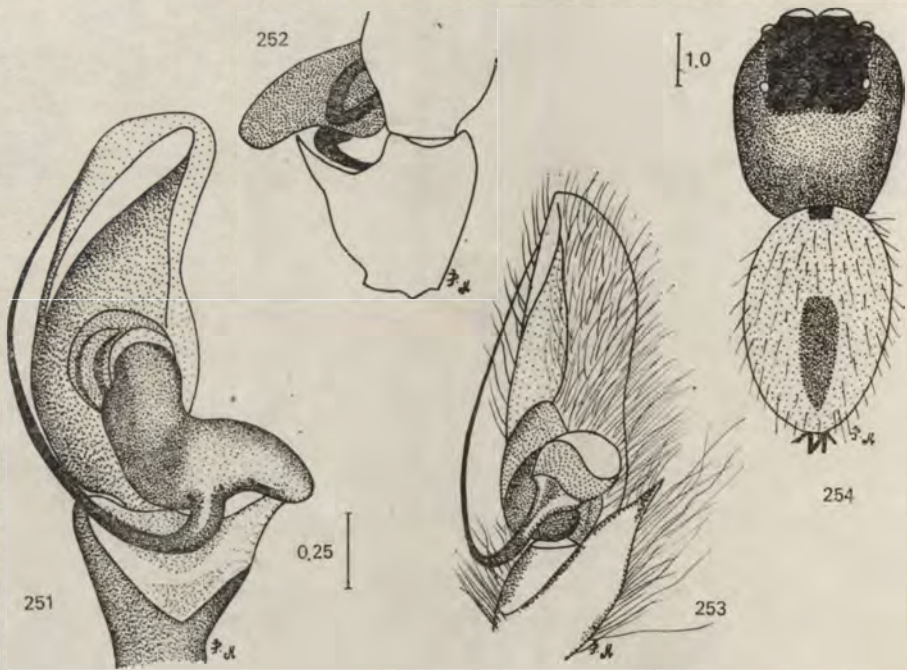




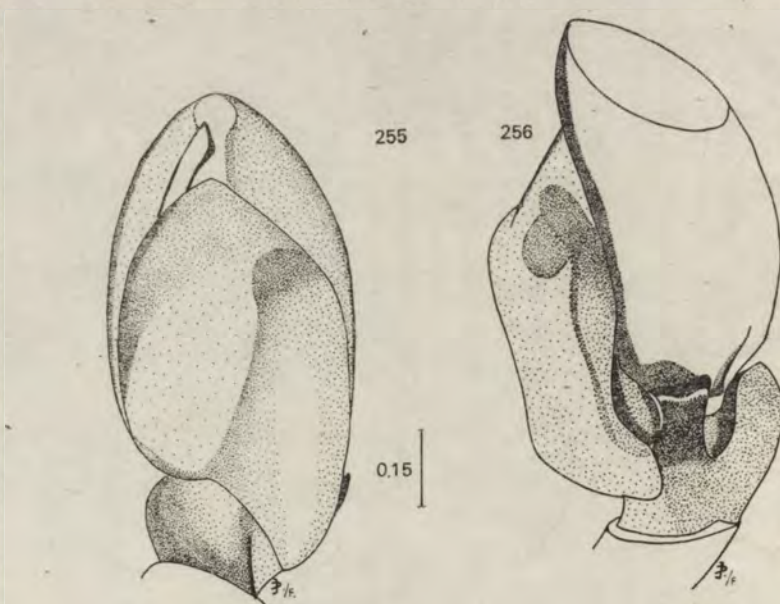
Figs. 241-244. *Philaeus chrysops* (PODA, 1761). ♀♀ from Ussuri, variation in abdominal pattern, epigynum and its internal structures.



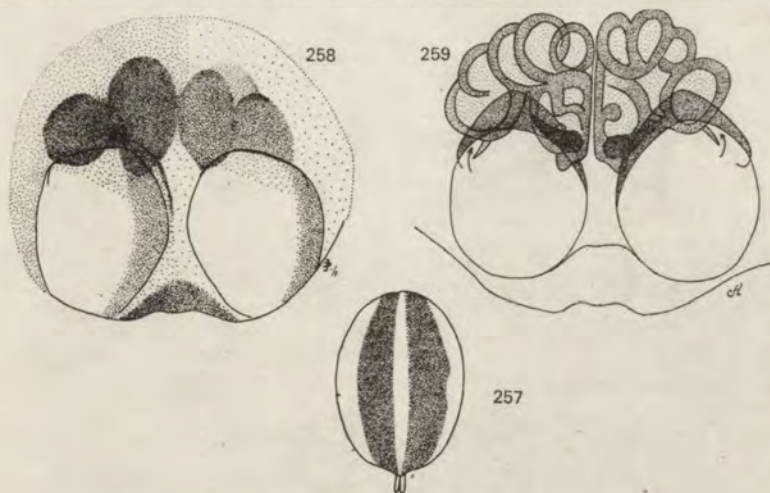
Figs. 245-250. *Philaeus chrysops*. Specimens from Crimea: 245-247 ♀ - epigynum, its internal structure and abdominal pattern, 248-250 ♂ - abdominal pattern and copulatory organ.



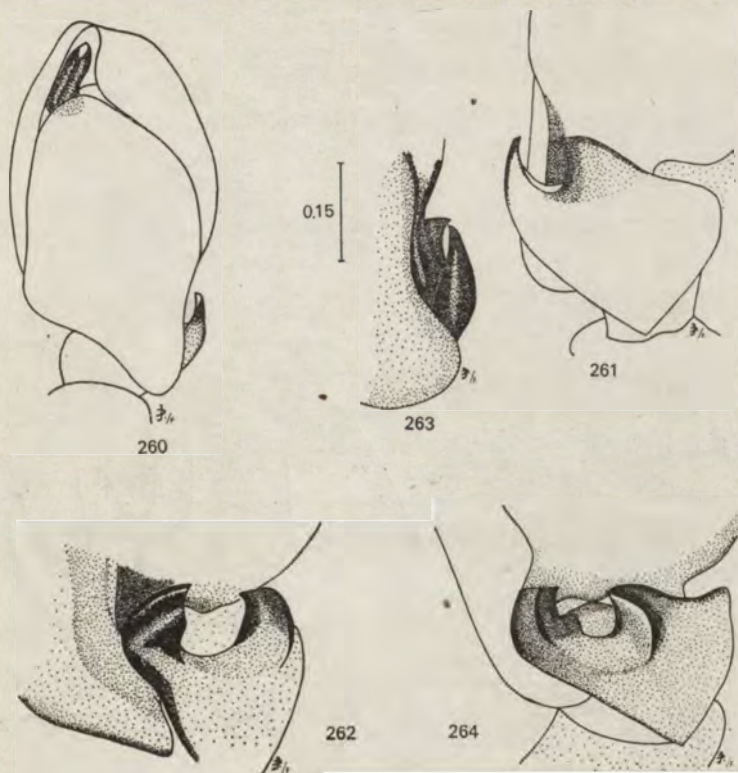
Figs. 251-254. *Philaeus chrysops*. Unusually coloured ♂ from Primore, resembling Japanese specimen of *Pellenes unipunctatus* SAITO. 251-252 - copulatory organ, 253 - the same organ placed in the position comparable with SAITO's drawing, 254 - general appearance.



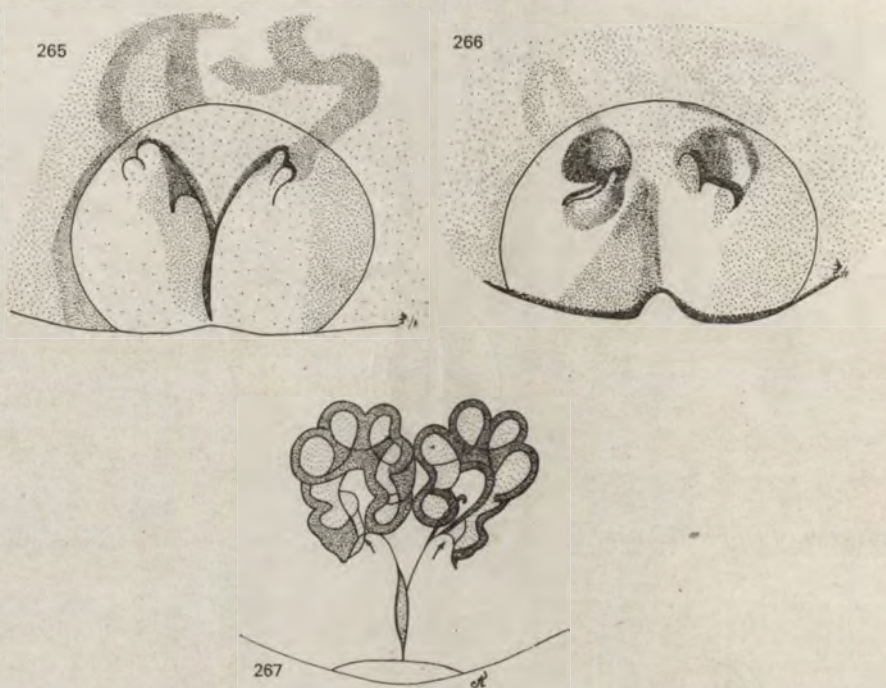
Figs. 255-256. *Phlegra fasciata* (HAHN, 1826). ♂ - copulatory organ.



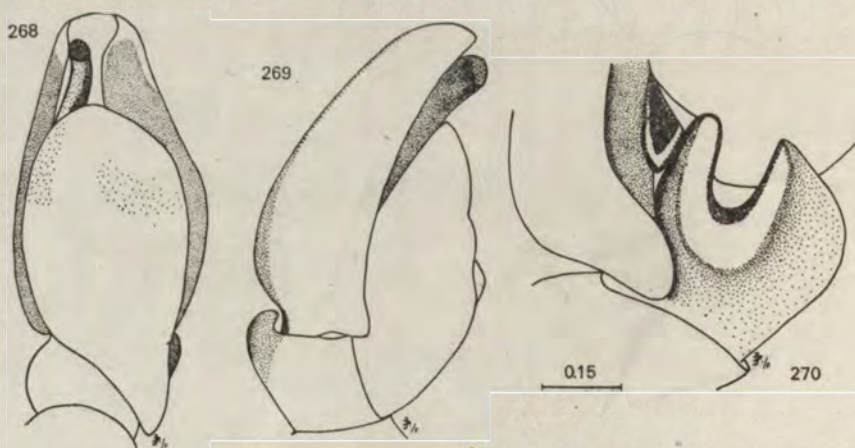
Figs. 257-259. *Phlegra fasciata*. ♀ — abdominal pattern, ventral view of epigynum and its internal structure



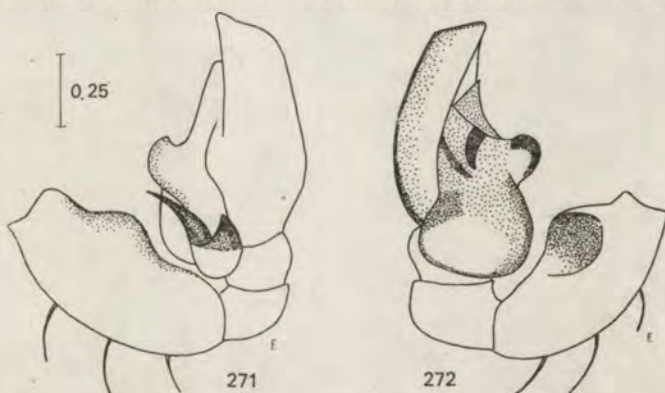
Figs. 260-264. *Phlegra fuscipes* KULCZYŃSKI in CHYZER et KULCZYŃSKI, 1891. ♂ — copulatory organ.



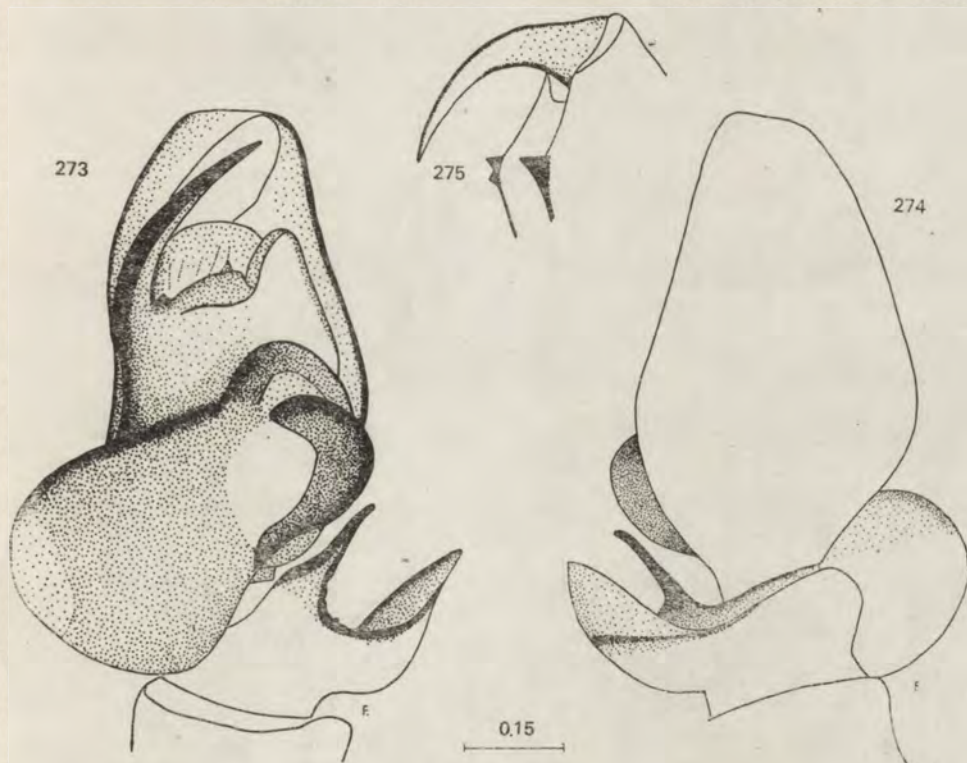
Figs. 265-267. *Phlegra fuscipes*. ♀ — variation in the external shape of epigynum and its internal structure.



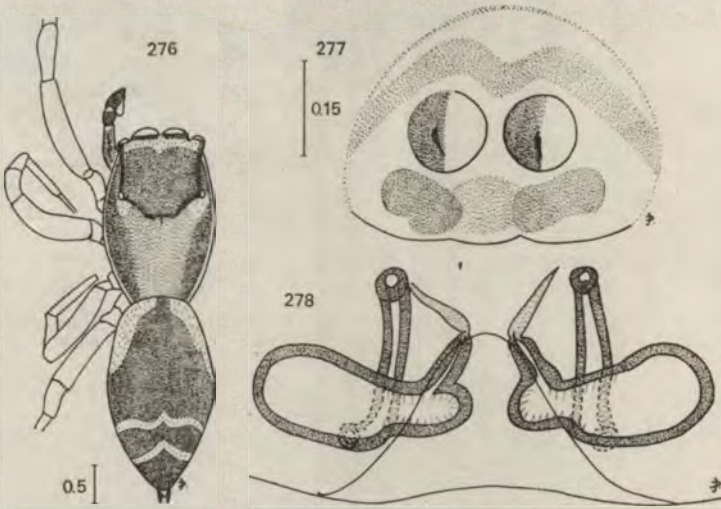
Figs. 268-270. *Phlegra sogdiana* CHARITONOV, 1946. ♂ — copulatory organ.



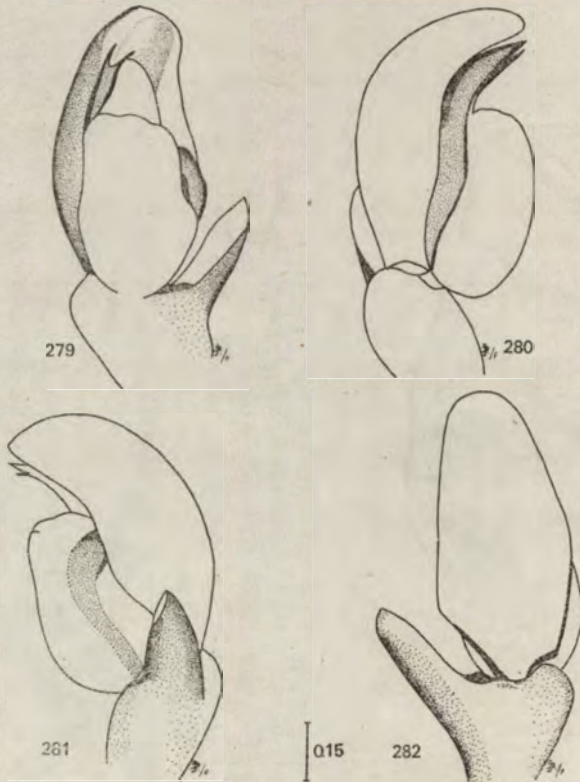
Figs. 271–272. *Pseudicius rufovittatus* SPASSKY, 1952. ♂ – pedipalp.



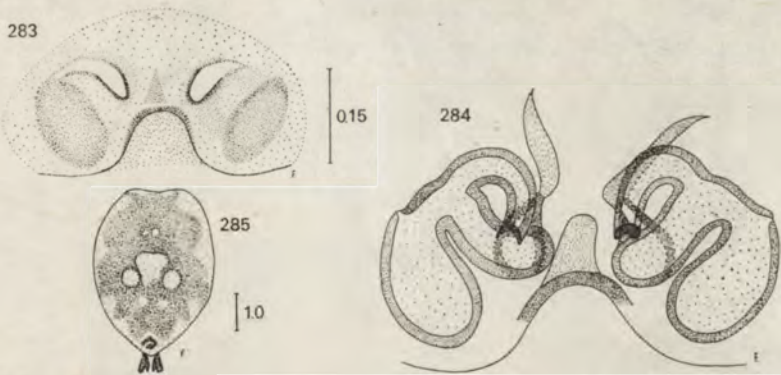
Figs. 273–275. *Pseudicius rufovittatus*. ♂ – copulatory organ and cheliceral dentition.



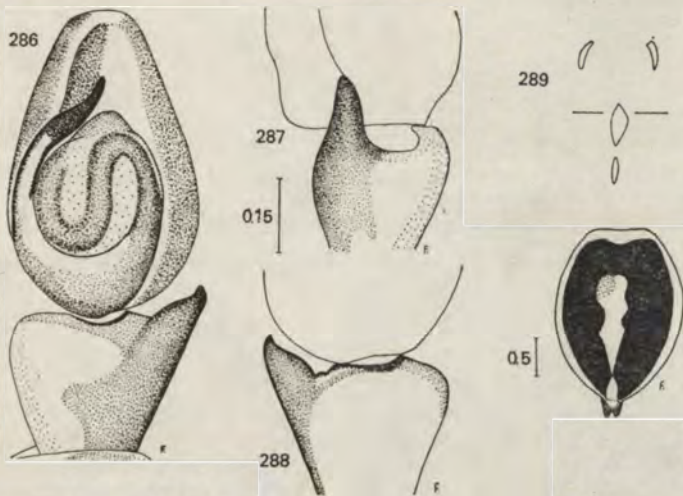
Figs. 276–278. *Pseudicius vulpes* (GRUBE, 1861). ♂ – general appearance, ♀ – epigynum and its internal structures.



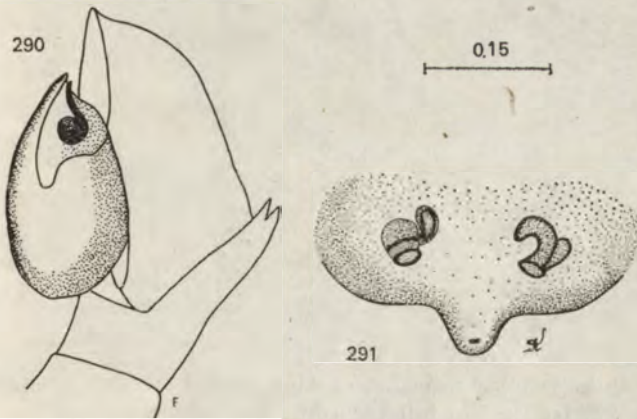
Figs. 279–282. *Salticus cingulatus* (PANZER, 1797). ♂ – copulatory organ.



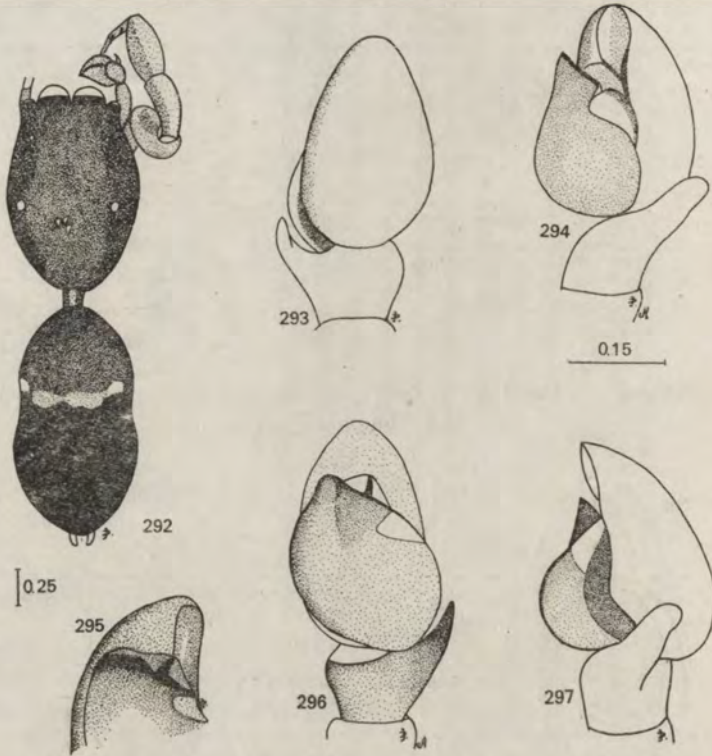
Figs. 283-285. *Sitticus albolineatus* (KULCZYŃSKI, 1895). ♀ - epigynum, its internal structure and abdominal pattern.



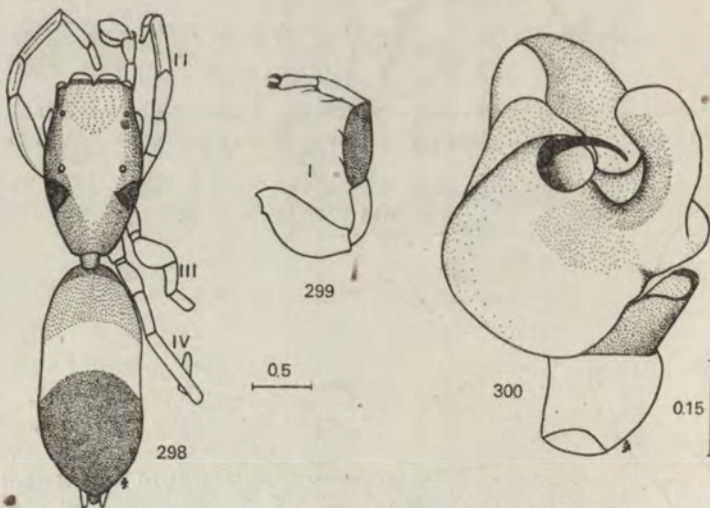
Figs. 286-289. *Sitticus albolineatus*. ♂ - copulatory organ and abdominal pattern, with spots location on the eye field (transverse line indicates posterior end of the eye field).



Figs. 290-291. Two species of *Synageles*: *S. charitonovi* ANDREEVA, 1976 - ♂ copulatory organ; *S. mlarulus* (C. L. KOCH, 1846) - ♀ epigynum.

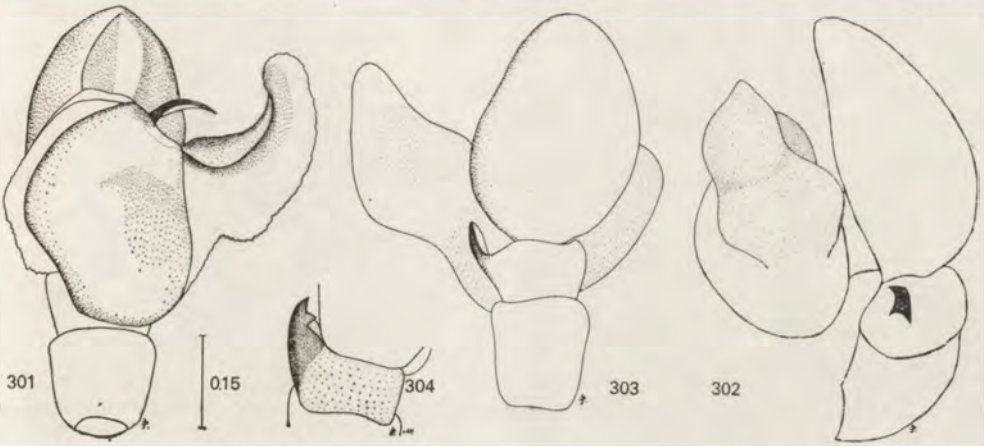


Figs. 292–297. *Synageles scutigler* sp. n. ♂ – general appearance and copulatory organ.

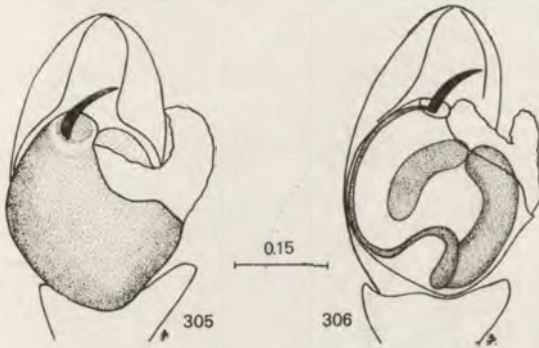


Figs. 298–300. *Synageles venator* (LUCAS, 1836). ♂ from Lower Amur Valley (GRUBE's collection) general appearance, Ist leg and inflated copulatory organ.

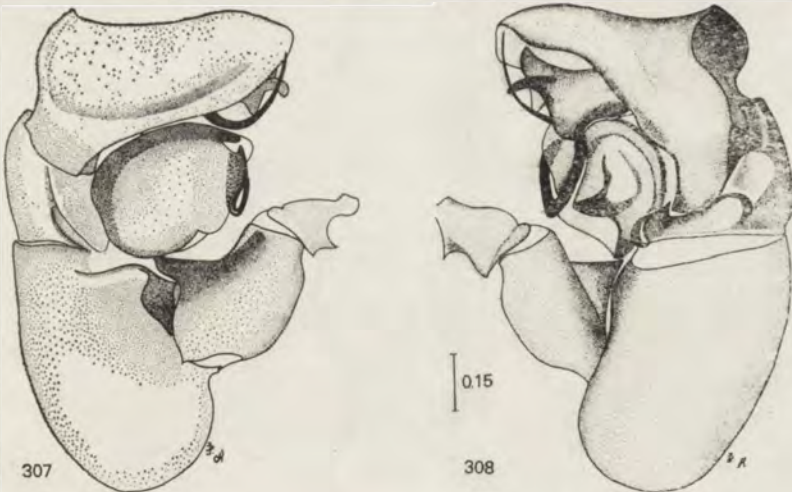




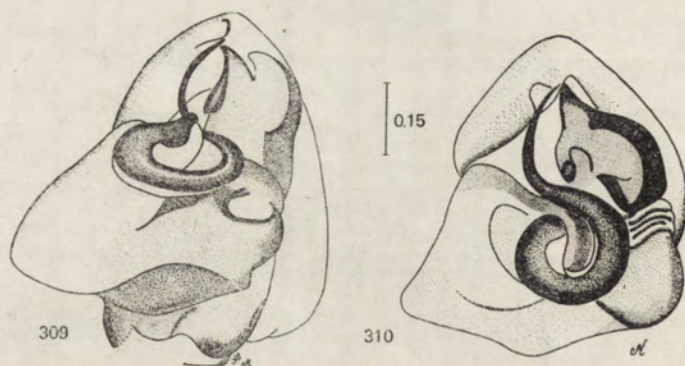
Figs. 301-304. *Synageles venator*. ♂ - the same specimen as above, further details of the copulatory organ



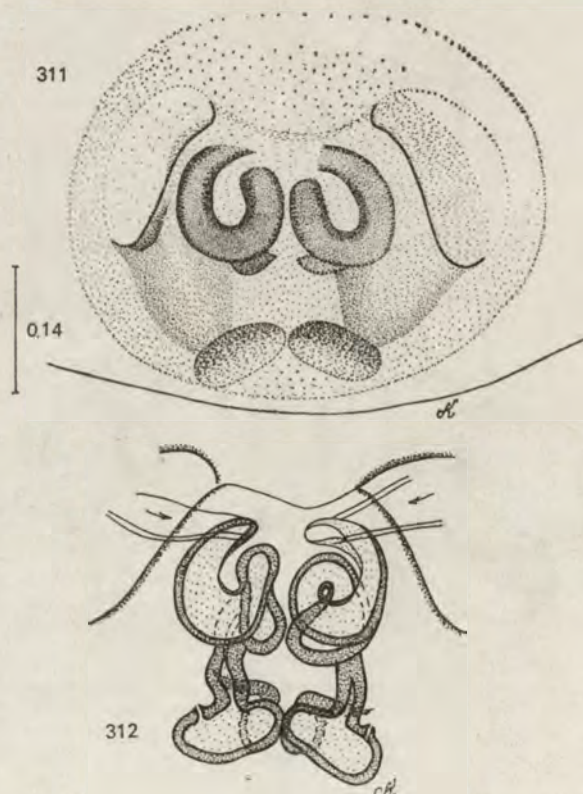
Figs. 305-306. *Synageles venator*. ♂ from Poland - in a result of boiling in the KOH solution the previously smooth bulbus became inflated in a similar way as in the previous specimen.



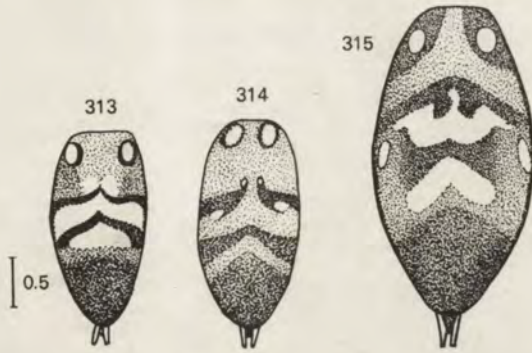
Figs. 307-308. *Synagelides agoriformis* STRAND in BÖSENBERG et STRAND, 1906. ♂ - palpus, note enlarged patella, much bigger than femur.



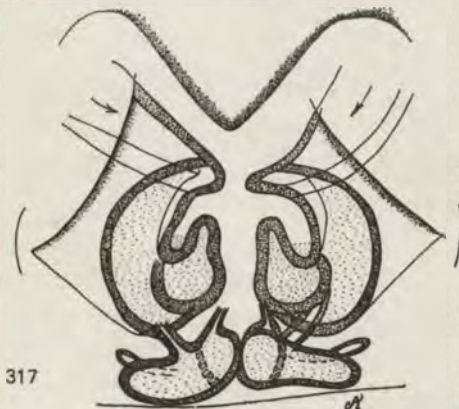
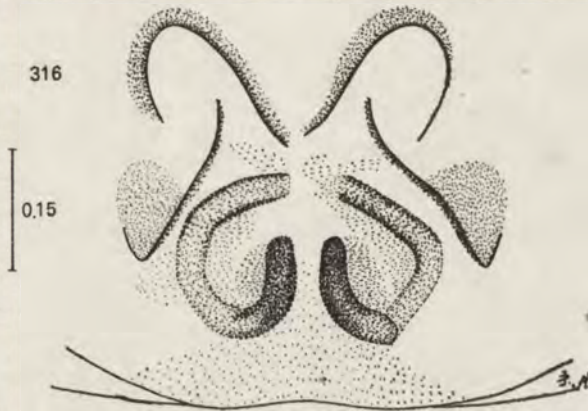
Figs. 309–310. *Synagelides agoriformis*. ♂ – bulb and embolus, ventral and anterior views.



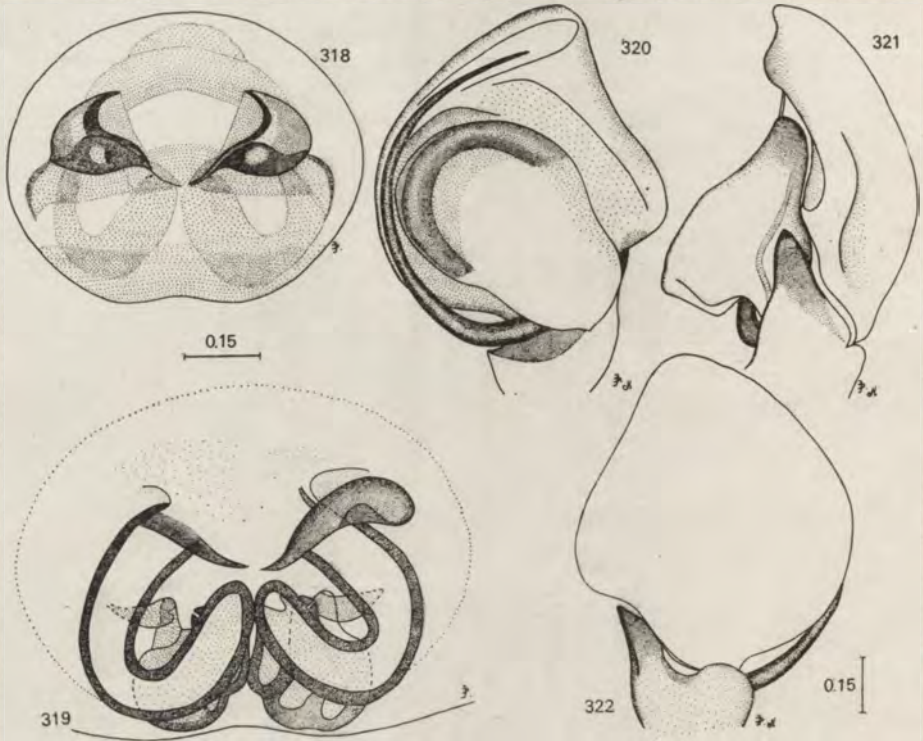
Figs. 311–312. *Synagelides agoriformis*. ♀ – epigynum and its internal structures.



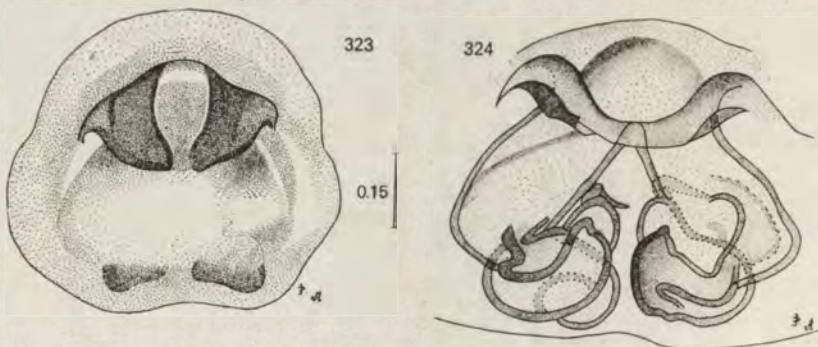
Figs. 313–315. *Synagelides agoriformis*. Abdominal pattern of a ♂, juvenile ♂ and a ♀ specimens.



Figs. 316–317. *Synagelides zhilovae* sp. n. ♀ — epigynum and its internal structures.



Figs. 318–322. *Yaginumaella medvedevi* sp. n. ♀ – epigynum and its internal structures; ♂ – copulatory organ.



Figs. 323–324. *Yaginumaella striatipes* (GRUBE, 1861). ♀ – epigynum and its internal structures.

## REFERENCES

- ANDREEVA E. M. 1969. Materialy po faune paukov Tadžikistana V. *Salticidae*. Izv. Akad. Nauk Tadžik. SSR, Dushanbe, 4: 89-93, 12 ff.
- ANDREEVA E. M. 1975. Distribution and ecology of spiders (*Aranei*) in Tadjikistan. *Fragm. Faun.*, Warszawa, 20: 323-352, 1 map.
- ANDREEVA E. M. 1976. Pauki Tadžikistana. Izdat. Doniš. Dushanbe, 195 pp., 138 ff., 1 map.
- BÖSENBERG W., STRAND E. 1906. Japanische Spinnen. Abh. senek. naturf. Ges., Frankfurt a. M., 30: 93-422, tt. 3-16.
- CANTARELLA T. 1974. Contributio alla conoscenza degli *Heliophanus* (*Arachnida*, *Araneae*, *Salticidae*) di Scilia. *Animalia*, Catania, 1: 157-173, 15 ff.
- CHAMBERLIN R. V., GERTSCH W. J. 1929. New spiders from Utah and California. *J. Ent. Zool.*, Claremont, 21: 1-12, 5 tt. (57 ff.).
- CHARITONOV D. E. 1932. Katalog der Russischen Spinnen. *Ežeg. zool. Muz. Akad. Nauk, Leningrad*, 32 (suppl.), 206 pp.
- CHARITONOV D. E. 1936. Dopolnenie k katalogu russkich paukov. *Sci. Mem. Gorky Univ.*, Perm, 2: 167-225, 2 tt.
- CHARITONOV D. E. 1946. Novye formy paukov fauny SSSR. *Izv. est. -nauč. Inst. Univ. Gorkogo, Molotov*, 12: 19-32, 60 ff.
- CHARITONOV D. E. 1952. Pauki i senokosey. In: Uščel'oe Kondara. Moskva-Leningrad, pp. 209-216, 7 ff.
- CHYZER C., KULCZYŃSKI L. [w.]. 1891. *Araneae Hungariae*. Secundum collectiones a Leone BECKER pro parte perscrutatas, 1. Budapestini, 168 + 3 pp., 6 tt.
- GRUBE E. 1861. Beschreibungen neuer, von den Herren L. v. SCHRENCK, MAACK, C. v. DITTMAR u. a. im Amurlande und in Ostsibirien gesammelter Araneiden. *Bull. Acad. St. Pétersbourg*, 4: 161-180.
- HARM M. 1971. Revision der Gattung *Heliophanus* C. L. KOCH. *Senck. biol.*, Frankfurt a. M., 52: 53-79, 51 ff.
- KRONEBERG A. 1875. Pauki (*Araneae*). In: FEDČENKO A. P. *Putešestvie v Turkestan*. 2, IV, 1. *Izv. imp. Őbšč. Ljub. Est. Antrop. Etnogr.*, S.-Petersburg - Moskva, 19, 3 + 58 pp., 5 tt.
- KULCZYŃSKI W. 1885. *Araneae* in Cantschadalia a Dre B. DYBOWSKI collectae. *Pam. Akad. Um. Wydz. mat.-przyr.*, Kraków, 11: 1-60, 9-11 tt.
- KULCZYŃSKI W. 1895. *Attidae* Musei Zoologici Varsoviensis in Siberia Orientali collecti. *Rozpr. Wydz. mat.-przyr. A. U.*, Kraków, 32: 45-98, t. 2.
- MILLER F. 1971. Řád Pavouci - *Araneida*. *Klíč zvířeny ČSSR* 4. Praha, pp. 51-306, 62 tt.
- MILLIDGE A. F., LOCKET G. H. 1955. New and rare British spiders. *Ann. Mag. nat. Hist.*, London, 12, 8: 161-173, 5 (27) ff.
- NEMENZ H. 1967. Einige interessante Spinnenfunde aus dem Neusiedlerseegebiet. *Anz. nat.-naturw. Kl. öster. Akad. Wiss.*, Wien, 1967: 132-139, 2 ff.
- PRÓSZYŃSKI J. 1968. Řevision of the spider genus *Sitticus* SIMON, 1901 (*Araneida*, *Salticidae*), I. The *terebratus* group. *Ann. zool.*, Warszawa, 26: 391-407, 23 ff.
- PRÓSZYŃSKI J. 1971a. Revision of the spider genus *Sitticus* SIMON, 1901 (*Aranei*, *Salticidae*). II. *Sitticus saxicola* (C. L. KOCH, 1848) nad related forms. *Ann. zool.*, Warszawa, 28: 183-204, 39 ff.
- PRÓSZYŃSKI J. 1971b. Redescriptions of the A. E. GRUBE's East Siberian species of *Salticidae* (*Aranei*) in the collection of the Wrocław Zoological Museum. *Ann. zool.*, Warszawa, 28: 205-255, 39 ff.
- PRÓSZYŃSKI J. 1973. Systematic studies on East Palaearctic *Salticida*, II. Redescriptions, of Japanese *Salticidae* of the Zoological Museum in Berlin. *Ann. zool.*, Warszawa, 30: 97-128, 73 ff.

- PRÓSZYŃSKI J. 1976. Studium systematyczno-zoogeograficzne nad rodziną *Salticidae* (*Aranei*) Regionów Palearktycznego i Nearktycznego. Rozprawy WSP, Siedlce, 6, 260 pp., 450 ff., 250 maps.
- SAITO S. 1960. The Spider Book Illustrated in Colours. Tokyo, 194 pp., 219 ff.
- SCHENKEL E. 1963. Ostasiatische spinnen aus dem Muséum d'Histoire Naturelle de Paris. Mém. Mus. Hist. nat., A, Paris, 25: 289–481, 263 ff.
- SIMON E. 1937. Les Arachnides de France, 6, 5. Paris, pp. 979–1298, ff. 1502–2028.
- SPASSKY S. A. 1952. Pauki turanskoj zoogeografičeskoj provincii. Ent. Obozr., Leningrad, 32: 192–205, 13 ff.
- TYSTSCHENKO V. P. 1965. A new genus and a new species of spiders (*Aranei*) from Kazakhstan. Ent. Obozr., Leningrad, 44: 696–704, 11 ff.
- WESOŁOWSKA W. (in press). *Salticidae* (*Aranei*) from North Korea, China and Mongolia. Ann. zool., Warszawa.

Zakład Biologii WSR-P  
ul. Prusa 12  
08-100 Siedlce, Poland.

#### STRESZCZENIE

[Tytuł: Badania systematyczne nad *Salticidae* Wschodniej Palearktyki III. Uwagi o *Salticidae* ZSSR]

Brak informacji o występowaniu *Salticidae* we wschodniej części ZSSR utrudniał zrozumienie ogólnego charakteru rozmieszczenia geograficznego tej rodziny pajaków w Regionie Palearktycznym. Praca niniejsza częściowo wypełnia tę lukę w oparciu o bogate zbiory Instytutu Zoologii AN ZSSR w Leningradzie oraz na podstawie niektórych innych kolekcji. Autor podaje wykaz 73 gatunków *Salticidae*, w większości z Primoria, doliny Amuru i Syberii, oraz z niektórych innych okolic ZSSR. Wykaz uzupełniony jest rysunkami morfologicznymi, stanowiącymi dokumentację oznaczeń gatunkowych oraz studium cech systematycznych, oraz uwagami morfologicznymi i danymi z etykiet okazów.

Spośród podanych gatunków – 6 jest opisanych jako nowe dla nauki oraz utworzony został nowy rodzaj. Dla 4 dalszych gatunków opisane zostały nieznane samice, zsynonimizowane zostały 2 nazwy gatunkowe. Z pozostałych gatunków 4 okazały się nowymi dla ZSSR, 1 dla Mongolii i 1 dla Japonii, 26 dalszych gatunków to gatunki nowe dla różnych okolic ZSSR, przede wszystkim dla Primoria, doliny Amuru i Syberii Wschodniej. Stwierdzenie tych faktów rozszerza znacznie zasięgi wspomnianych gatunków, często o kilka tysięcy kilometrów.

## РЕЗЮМЕ

[Заглавие: Изучение систематики *Salticidae* Восточной Палеарктики, III. Замечания о *Salticidae* СССР]

Отсутствие данных о нахождении *Salticidae* в восточной части СССР затрудняет понимание общего характера географического распространения этого семейства пауков в Палеарктике. Данная работа, основанная на изучении богатых сборов Зоологического Института АН СССР в Ленинграде, а также некоторых других коллекций, частично восполняет этот пробел. Автор приводит список 73 видов *Salticidae*, главным образом из Приморья, долины Амура и Сибири, а также некоторых других районов СССР. Список дополнен многочисленными рисунками, а также замечаниями о систематических признаках и данными о местах сбора материала.

Из приведенных видов 6 описаны как новые для науки, при этом выделен новый род. Для 4 видов описаны неизвестные ранее самки. Два вида сведены в синонимы. Из остальных видов 4 оказались новыми для СССР, 1 — для Монголии и 1 — для Японии, а 26 видов указываются впервые для различных районов СССР, главным образом для Приморья, долины Амура и Восточной Сибири. Эти новые данные значительно расширяют известные нам ареалы видов часто на несколько тысяч километров.

