

TRIALS REPORT

2008-2010

***Buddleja davidii* and its close hybrids**

**An Invited RHS Woody Plant Trial and
Eurotrial**

Trials Office
The Royal Horticultural Society Garden, Wisley, Woking, Surrey, GU23 6QB



**Trial of *Buddleja davidii* and its
close hybrids
2008-2010**



Trial Objectives:

- To make recommendations for the Award of Garden Merit.
- To clarify nomenclature.
- To collect specimens for the RHS Herbarium.

Judging Criteria:

The Woody Plant Trials Assessment Panel assessed the cultivars three times a year, for three years on the following criteria;

Shape/habit, foliage, flowers (quantity and quality) and hardiness.

The Panel co-opted three genus specialists, who are all national collection holders of *Buddleja*. They were; Peter Moore (Longstock Gardens), Anita Allen (Shapcott Barton Estate) and Andrew Bullock (The Lavender Garden).

Eurotrial Assessment:

Eurotrials are a collaboration between a number of gardens, growers and horticultural specialists from; The Netherlands, Germany, France, Ireland, Austria, Italy, Belgium and the UK. The Eurotrial committee decide upon a selection of plants, which are sourced from one sender and delivered to all of the participating gardens. Instructions are given to make sure that cultivation of the plants is the same at each location. This helps to determine which plants are more suitable for which parts of Europe, and which are the best plants overall. Each country has an independent panel of specialists examining the plants. The judging criteria used for the Eurotrials assessment is listed below; (*Criteria marked * were assessed by the Woody Trials Assessment Panel, the other factors were recorded by the Trials Office*).

Plant:

- Growth depressions and frost damage in the spring (1-9)
- Vigour (1-9)
- *Decorative impression (1-9)
- Habit (1-7)
- Health (1-5)
- Height and width of plant (cm)
- *General impression (1-9)

Leaf:

- Decorative impression (1-9)
- Length (cm)
- Width (cm)
- Colour (1-6)

Flower:

- Flowering period (weeks)
- *Impression of a single flower (1-9)
- Number of inflorescences (1-9)
- Fragrance (1-9)
- Main colour of corolla tube/ inflorescence (1-13) / (RHS colour chart)
- Length of inflorescence (cm)
- Number of butterflies (butterfly count)
- Stability of flowering shoots (1-9)

N.B. The numbers either represent different characteristics, such as colours, allowing a more uniform approach of colour matching between the trials, or in other cases represent a continuum between very poor (1) and very good (9) in performance.

Entries:

The trial totalled 125 entries, 49 of which came from Eurotrials. The Woody Plants trials assessment panel thought it necessary to include additional cultivars to the list proposed by Eurotrials, so that a more complete picture of *Buddleja davidii* cultivar diversity could be established. 69 entries were added to the RHS trial, with an additional 7 entries planted at Deer's Farm in 2009.

Two plants of each cultivar were submitted by growers from the UK, Netherlands and America.

The Woody Plant Trials Assessment Panel assessed the trial and recommended the Society's AWARD OF GARDEN MERIT (H4) to:

(Note: the comments are observations from members of the Woody Plant Trials Assessment Panel)



***Buddleja davidii* 'Blue Horizon' AGM (H4) 2010**

[No 5 & 52] (votes 7-2).

Submitted by Eurotrial and Sampford Shrubs.

Comments: Nice blue and good tight habit. Distinct. Has everything going for it.

Availability: 10 suppliers listed in Plant Finder.

Description: Flower colour violet blue 93C. Average inflorescence size 44x5cm. Height and spread 270x260cm.



***Buddleja davidii* CAMBERWELL BEAUTY 'Camkeep' (English Butterfly Series) AGM (H4) 2010**

[No 9] (votes 8-0).

Submitted by Eurotrial.

Comments: Like a dwarf 'Dartmoor'. Nice compact habit with a broad base. Lots of flower and very differently shaped inflorescences.

Availability: 5 suppliers listed in Plant Finder.

Description: Flower colour purple N81B. Average inflorescence length 30cm. Height and spread 90x230cm.





***Buddleja davidii* NANHO WHITE 'Monite' AGM (H4) 2010** [No 62] (votes 12-0). Submitted by Longstock (National Collection Holder).
Comments: Good habit, stays compact. Floriferous, with long tapering panicles.
Availability: 10 suppliers listed in Plant Finder.
Description: Flower colour white N155D. Height and spread 210x280cm.



The following AGM's have been reconfirmed:



***Buddleja davidii* 'Royal Red' AGM (H4) 2010** reconfirming AGM(H4)1993 [No 37] (votes 10-1). Sent by Eurotrial.
Comments: A good colour, the best red of the older cultivars. Reasonable habit.
Availability: 50 suppliers listed in Plant Finder.
Description: Flower colour rich purple, bit redder than 77A. Average inflorescence size 37x8cm. Height and spread 170x180cm.



***Buddleja davidii* 'Dartmoor' AGM (H4) 2010** reconfirming AGM(H4)1993 [No 10] (votes 12-0). Sent by Eurotrial.
Comments: Very distinctive inflorescences. Very big and spreading, fantastic if you have the space.
Availability: 28 suppliers listed in Plant Finder.
Description: Flower colour purple violet N81B/C. Height and spread 300x400cm.





***Buddleja davidii* 'Black Knight' AGM (H4) 2010**
 reconfirming AGM(H4)1993
 [No 4] (votes 8-0).
 Sent by Eurotrial.
Comments: Unique dark colour. There is no modern form with this depth of colour.
Availability: 53 suppliers listed in Plant Finder.
Description: Flower colour dark violet, darker than 86A. Inflorescence size 21x5cm. Height and spread 220x250cm.



***Buddleja davidii* 'Pink Delight' AGM (H4) 2010**
 reconfirming AGM(H4)1993
 [No 29 & 30] (votes 11-0).
 Sent by Eurotrial.
Comments: Distinct. The best pink. Large well branched inflorescences. Good compact habit.
Availability: 42 suppliers listed in Plant Finder.
Description: Flower colour deep pink, bit brighter than N78C. Inflorescence size 30x8cm. Height and spread 240x250cm.



***Buddleja davidii* 'White Profusion' AGM (H4) 2010**
 reconfirming AGM(H4)1993
 [No 43] (votes 7-1).
 Sent by Eurotrial.
Comments: A later flowering white. A big plant, but it has a reasonably good habit. The secondary flower spikes are a good size.
Availability: 28 suppliers listed in Plant Finder.
Description: Flower colour white N155D. Height and spread 280x380cm.





***Buddleja davidii* NANHO PURPLE 'Monum' AGM (H4) 2010** reconfirming AGM(H4)2002 [No 21] (votes 6-2).
 Sent by Eurotrial.
Comments: Outstanding dwarf *Buddleja*. Lovely habit. Easy plant with a nice bright colour.
Availability: 22 suppliers listed in Plant Finder.
Description: Flower colour purple violet N81A. Average inflorescence size 23x6cm. Height and spread 100x200cm.



The following are to be awarded AGM (H4), subject to availability:



***Buddleja* 'West Hill' AGM (H4) 2010** [No 91] (votes 9-0).
 Sent by Trecanna Nursery.
Comments: Distinct. Nice foliage which looks good with the pale flowers. Good habit.
Availability: Limited availability.
Description: Flower colour pale violet blue 91C. Height and spread 210x220cm.



***Buddleja* 'Miss Ruby' NC2003-22 AGM (H4) 2010** [No 54] (votes 12-0).
 Submitted by North Carolina State University.
Comments: Excellent, wonderful colour, the nearest to red so far. Its compact habit makes it great for a small garden. Most distinctive.
Availability: Not listed in Plant Finder.
Description: Flower colour bright purple, slightly redder than 72A. Height and spread 200x200cm.





***Buddleja davidii* 'Ellen's Blue' AGM (H4) 2010 [No 48]**

(votes 10-1).

Submitted by Eurotrial.

Comments: Really good clear 'RAF' blue. The erect flower spikes really show themselves off. Good overall impression.

Availability: Not listed in Plant Finder.

Description: Flower colour violet blue 93C. Height and spread 180x190cm.



***Buddleja davidii* 'Silver Lilac' AGM (H4) 2010 [No 38]**

(votes 9-0).

Submitted by Eurotrial.

Comments: Some *Buddleja fallowiana* in its ancestry. Very distinct, good tapering panicles with a broad base. Compact habit. Lovely greyish foliage.

Availability: Not listed in Plant Finder.

Description: Flower colour violet N80C. Inflorescence length 31cm. Height and spread 160x210cm.



***Buddleja davidii* 'Sunkissed' AGM (H4) 2010 [No 41]**

(votes 9-3).

Submitted by Eurotrial.

Comments: Large distinct panicles with a subtle mosaic colouring when examined up close. A good compact habit and a strong grower.

Availability: Not listed in Plant Finder.

Description: Flower colour violet 85A. Inflorescence length 29cm. Height and spread 280x290cm.





***Buddleja davidii* 'Darent Valley' AGM (H4) 2010**

[No 76] (votes 8-1).

Submitted by RHS Wisley.

Comments: Compact upright habit, best habit of all the white entries. Very floriferous.

Availability: Not listed in Plant Finder.

Description: Flower colour white N155C. Height and spread 210x200cm.



(H4 - hardy throughout the British Isles).

The following entries were recommended for the Sunset List:

***Buddleja davidii* 'Empire Blue' AGM (H4) 1993 [No 15]**

Votes to rescind AGM; 11-0.

***Buddleja davidii* NANHO BLUE = 'Mongo' (syn. 'Nanho Petite Indigo', 'Nanho Petite Plum', 'Nanho Petite Purple', 'Petite Indigo'). AGM (H4) 2002 [No 22]**

Votes to rescind AGM; 8-0.

For more information on where to purchase these plants, as well as others, please see an up-to-date copy of 'The Plant Finder', or alternatively, visit the RHS website:

<http://apps.rhs.org.uk/rhsplantfinder/>.

Cultivation:

Soil and Nutrition:

The entries were planted in 2007 in Howard's Field at RHS Wisley. The plants were spaced 2.5m apart.

In 2008 many cultivars appeared to be chlorotic, which is thought to be due to mineral deficiency, particularly magnesium. To overcome this, magnesium sulphate salts (Epsom salts) were watered into the soil. In general *Buddleja*'s are fairly unfussy about soil, but prefer well drained soils in a sunny spot (although they can wilt if they don't get enough water), and prefer to be away from frost pockets.

In 2009 a light top dressing of a balanced fertiliser was added in late spring, rather than applying more nitrogen and potassium. Seven additional entries were planted at Deer's Farm in 2009.

Pruning:

In the October of their first year, all the plants were cut back after flowering to half of their original size, to reduce wind rock and the spread of seedlings. On 9/4/08, all plants were pruned back to a third of their original size, to encourage new growth.

In 2009 one plant from each entry was hard pruned (the plant is cut back to approximately two thirds of its original size), and the other plant was pruned lightly (approximately one

third of the length of the branches were taken out, which is equal to the dead branch tips and the previous year's dead flowers combined). Pruning was performed in early March.

For the variegated varieties, the non-variegated reversioners were removed from only one of the two entries. The aim was to show the proportion of reversion that was occurring. It should be noted that hard pruning variegated plants is more likely to result in reversion.

In November 2010 there were a series of strong winds. The Deer's Farm site is more exposed than Howards Field, which is surrounded by trees. The advantage of pruning after flowering was seen when three of the un-pruned entries blew over. Two were completely ripped out of the ground, and one was blown over and damaged. The pruned plants all survived, and will have been less affected by wind-rock than the remaining un-pruned entries.



Pictures: Left: the blown over buddleja, Right: a close up of the damage done to the base of the stem.

Deadheading:

Deadheading was demonstrated on one plant per entry. This encourages the plants to re-flower, prolonging their flowering season (and it helps prevent seedlings spreading, although the seeds can be a good source of winter food for birds).



These two Buddleja's are both 'Miss Ruby'. The pictures were taken on the same day (9/9/10), and both plants are the same age and healthy. The left hand bush has been deadheaded throughout the season, whereas the right had bush has not. This clearly demonstrates the advantage of deadheading to prolong the flowering season. Other advantages include the production of new fresher looking foliage and helping the bush to maintain a good habit. It also prevents excessive seeding, since *Buddleja davidii* is listed as an invasive plant.

Findings:

Hardiness:

Although *Buddleja davidii* is a hardy species and will survive British winters, it was noted that in the spring some cultivars showed frost damage on the emerging foliage, where as

others were almost evergreen. After the winter of 2009 / spring 2010, which was particularly prolonged and cold (temperatures reached -10.5°C and 23cm of snow fell in January, as well as late frosts), some of the entries were looking particularly woebegone early in the year, but they recovered well, putting on growth later in the summer, with a flowering period that was slightly delayed. No cultivars were lost due to winter cold throughout the trial.

Pests and Disease:

Leaf and bud eelworm (*Aphelenchoides ritzemabosi*) was found affecting some entries. This can attack a wide range of plants including *Buddleja* and *Chrysanthemum*. In many cases it causes brown or black necrotic areas on the foliage that are bounded by the larger leaf veins, as well as stunted growth and poor flower development. On *Buddleja*, however, it seems to be a problem within the buds, rather than in the expanded leaves. The feeding activities of the eelworms can affect the development of the flowers, so that the flower spikes are reduced in size with many aborted buds. There is no treatment for this nematode pest. Infested plants were removed as soon as possible, since Eelworm can spread to other plants by direct leaf contact or in water splashes.

Phytophthora cryptogea was identified as affecting entry #24 *Buddleja* 'Nanho petite purple' and *Phytophthora citricola* was identified on entry #75 *Buddleja* 'Charming'. Both entries were also affected by both *Pythium irregulare* and *Pythium vexans*. Neither *Phytophthora* or *Pythium* can be treated and are serious plant diseases. Both the affected entries were removed and destroyed.

Pictures: Left: The affected *Buddleja* NANHO PURPLE = 'Monum' in the foreground. Middle: The rotten wood at the base of *Buddleja* 'Charming'. Right: the affected *Buddleja* 'Charming'.



Known as 'water moulds', these diseases spread by water movement in the soil, as well as the transport of infected plant material and soil containing the spores. In this case, it is impossible to identify accurately where the pathogens may have come from.

Symptoms of *Phytophthora* infections include the bark becoming a darker colour (seen when it is cut into) (see image above). Dead bark can sometimes be seen around the base of the stem. Often associated with the dying bark are lesions oozing dark sap. The root system is reduced in size and dark coloured and dying. The leaves tend to be smaller, turn yellow and often fall off early. Eventually large amounts of dieback will occur, and the plant will be overcome by the pathogen.

As a precaution to prevent the spread of disease, after the trial all the remaining entries were burnt on sight. Soil was dug out around infected plants, as far as possible, and also burnt. Plants known to be susceptible to *Phytophthora* should not be planted in the area, since the spores can remain in the soil for up to 10 years.

(For more information on cultivation and pests and disease, please see the RHS advice page: <http://www.rhs.org.uk/Gardening/Help-advice>).

**The approximate flowering times for the AGM *Buddleja* cultivars:
(Dates are an average from 2009 and 2010).**



Green = From the appearance of the first open flower, until 50% of the panicles are opening.

Yellow = Peak flowering time from when 50% of the panicles are open until the last inflorescences start fading.

Red = The end of the flowering season. Some *Buddleja*'s repeat flower a little and so have a few panicles open late into the season. Also the two plants had different flowering lengths, dependant on pruning practices (see 'Pruning').

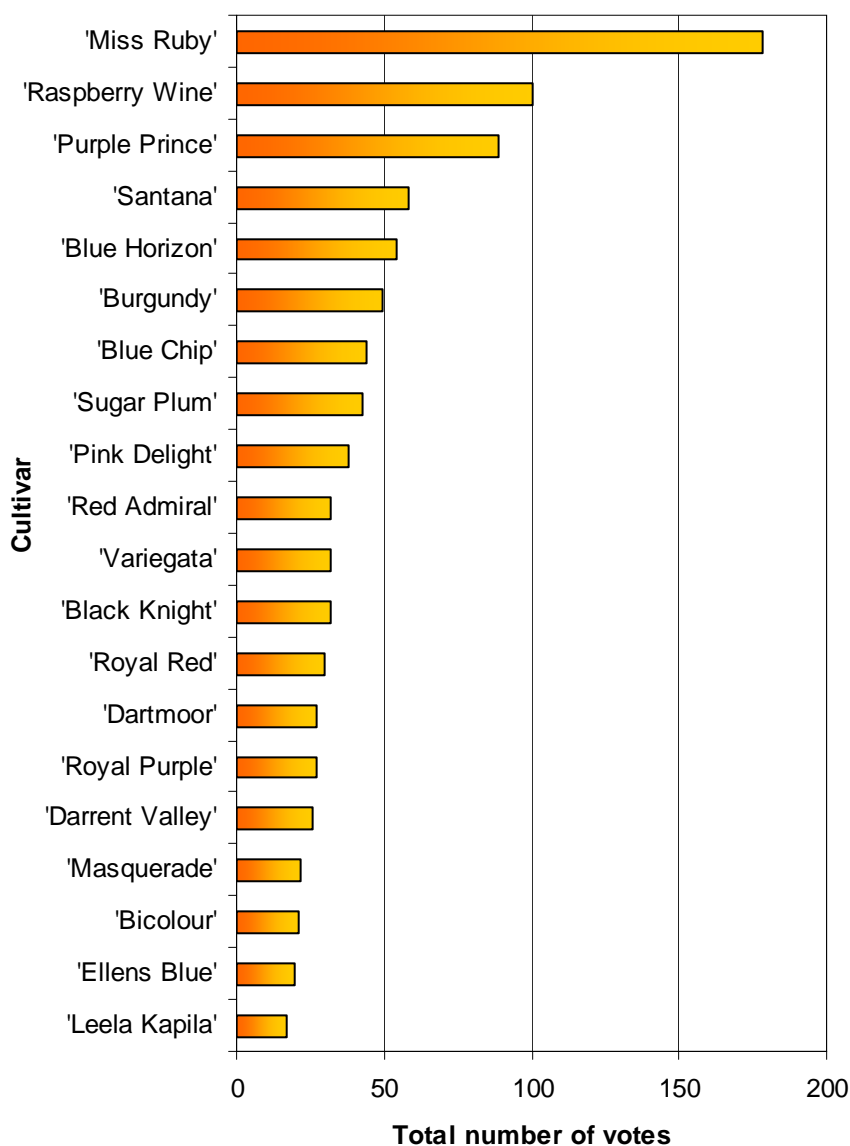
Public Vote for Favourite:

2008: Between 31st July and 27th September a public 'vote for your favourite *Buddleja*' was conducted. A total 448 votes were cast, and resulted in 77 of the cultivars receiving at least 1 vote. By far the most popular was 'Miss Ruby' which received 17.6% of the votes cast. The three runners up were 'Blue chip' (6.9%), 'Raspberry Wine' (6.2%) and 'Blue Horizon' (6%).

2009: 375 votes were cast by the public between the 15th July and 9th September. 82 of the cultivars received a vote. As with the previous year, the most popular cultivar was 'Miss Ruby' (14.7%). The runners up were; 'Raspberry Wine' and 'Purple Prince' (both with 6.4%) and 'Burgundy' (5.6%).

2010: This was the most popular year, with 615 votes cast between 28th July to 18th September, and 83 entries received at least 1 vote. This year resulted in 'Purple Prince' (8.8%) being the most popular cultivar, followed by 'Raspberry Wine' (7.9%) and 'Miss Ruby' (7.2%).

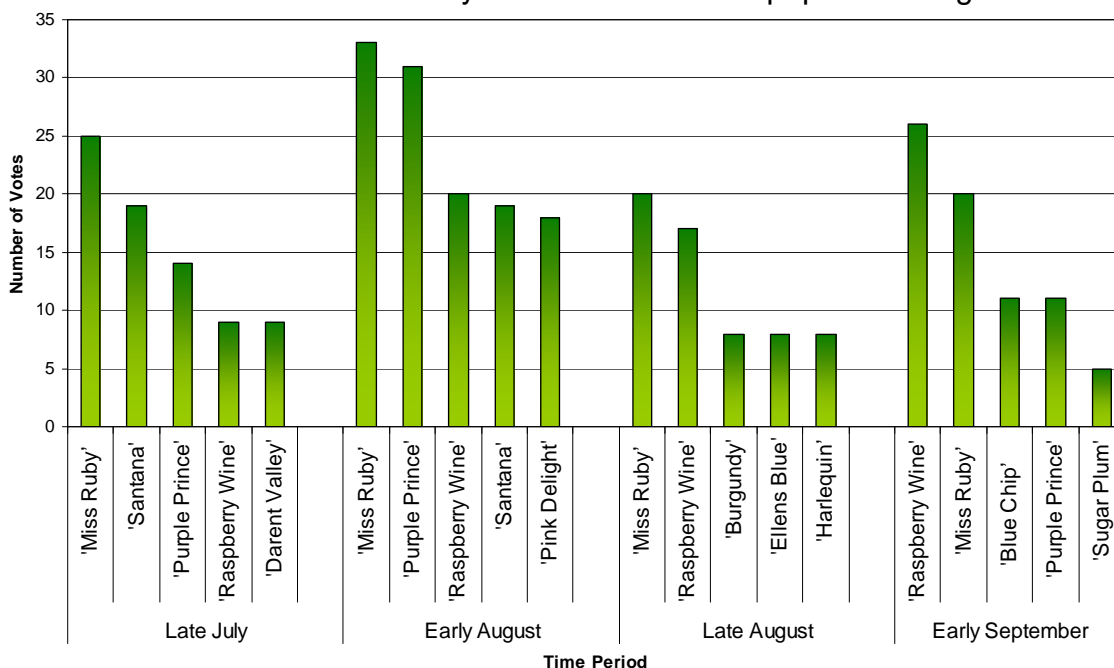
Top 20 favourite *Buddleja* (votes for all 3 years)



The graph on the left is the cumulative result of the public vote from all three years, and shows the top 20 most popular cultivars in the trial.

(Photos of the top 6 cultivars are shown on the next page).

The graph below was produced from the results from all three years, divided into 4 time periods. The top 5 most popular *Buddleja* in each division are shown. This graph demonstrates that the favourite *Buddleja* cultivars remained popular throughout the season.



The top cultivars overall:



#1 'Miss Ruby' (Tn 54)



#4 'Santana' (Tn 69)



#2 'Raspberry Wine' (Tn 35)



#5 'Blue Horizon' (Tn 5 & 52)

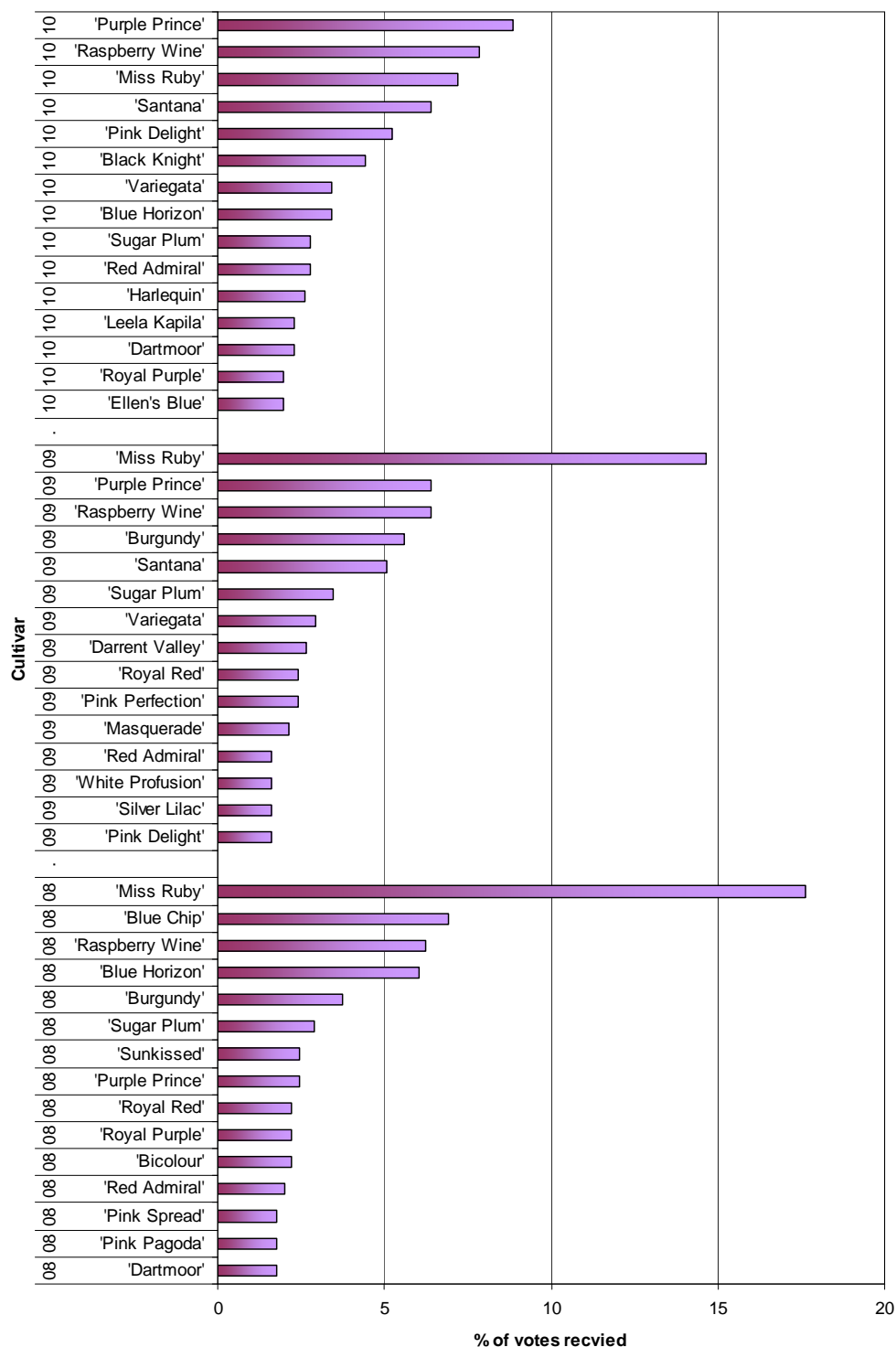


#3 'Purple Prince' (Tn 80)



#6 'Burgundy' (Tn 8)

The top 10 most popular cultivars from the three years are shown below.

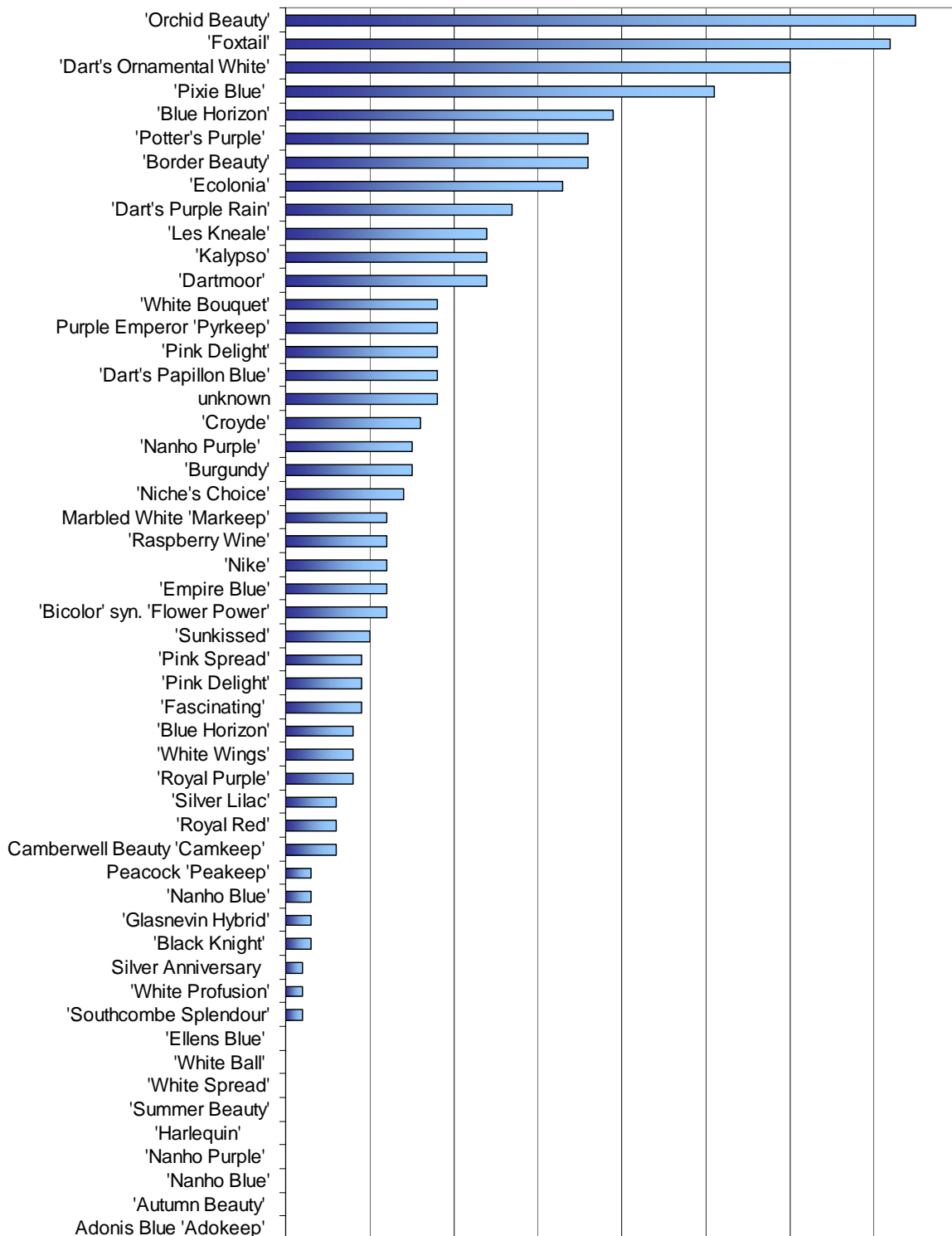


Insect Visitations:

In 2009 a butterfly count was conducted. This was done by spending 10 minutes observing one row of *Buddleja* entries, recording which species of butterfly were seen to land on a flower (not leaves). Information was also recorded about the flowering stage, the size of the shrubs and the colour of the cultivars, as well as the date and weather conditions. These recordings were done on warm sunny days early in the morning, when butterfly numbers were at their highest.

It should be noted that it is difficult to make quantitative readings of insect visitations and that the results here are a guideline only. The plants varied in size and flowering stage. Also no other insect was included in this count (such as bees, which may have different preferences).

A graph showing the proportion of insect visitations to the Eurotrial *Buddleja* only is shown below.



Colour seemed to have little impact on the choice of flowers that were visited by the butterflies. The top four cultivars are listed as being violet (x2), white and light blue.

The strength of the scent seemed to have some impact. The top two had medium scent levels and the 3rd and 4th had relatively high. So it seems that a fair amount of scent is required to attract butterflies.

A general observation indicated that the plants which were most popular were the cultivars which were the largest, and were densely covered in fully open flowers, indicating that the butterflies were attracted to the quantity of food on one plant.

The Butterfly Conservation Trials in Dorset found that 'Foxtail' was their most visited *Buddleia* by butterflies, so the results of this and the RHS's trial reflect each other.

A graph representing the proportion of butterfly visitations to the cultivars assessed can be seen overleaf.

Andrew Halstead, RHS Wisley Principal Entomologist, recorded the insects that he found on the *Buddleja* on the 12th, 14th and 22nd August 2008, on warm sunny days between 13.00 and 14.00 hours. He recorded butterflies and other insects that were visiting the flowers to feed on nectar and pollen. The trial was also examined by torchlight on the 26th August between 21.00 and 21.30 hours to see if there were any night-time insects visiting the flowers. Insects that were resting on leaves were not recorded; only those probing the flowers with their probosci were considered to be feeding on nectar and/or pollen. The insects that were observed are listed below;

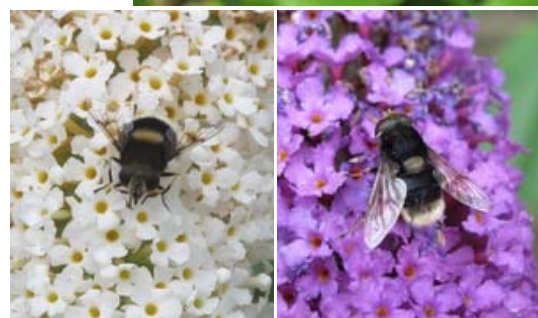
Lepidoptera (Butterflies and Moths):

<i>Pieris brassicae</i>	Large cabbage white butterfly
<i>Pieris rapae</i>	Small cabbage white butterfly
<i>Gonepteryx rhamni</i>	Brimstone butterfly
<i>Polyommatus icarus</i>	Common blue butterfly
<i>Polygonia c-album</i>	Comma butterfly
<i>Inachis io</i>	Peacock butterfly
<i>Vanessa atalanta</i>	Red admiral butterfly
<i>Vanessa cardui</i>	Painted lady butterfly
<i>Maniola jurtina</i>	Meadow brown butterfly
<i>Pleuroptera ruralis</i>	Mother of pearl moth
<i>Noctua pronuba</i>	Large yellow underwing moth
<i>Hypena proboscidalis</i>	Snout moth
<i>Xestia xanthographa</i>	Square-spot rustic moth
<i>Camptogramma bilineata</i>	Yellow shell moth
<i>Eupithecia</i> sp	a pug moth



Diptera: Flies (Hoverflies and March flies)

<i>Volucella zonaria</i>	
<i>Volucella pellucens</i>	
<i>Eristalis tenax</i>	
<i>Eristalis pertinax</i>	
<i>Eristalis intricarius</i>	
<i>Eristalis interruptus</i>	
<i>Eristalis arbustorum</i>	
<i>Eristalis horticola</i>	
<i>Eristalinus sepulchralis</i>	
<i>Myathropa florea</i>	
<i>Syrphus ribesii</i>	
<i>Dilophus febrilis</i>	Fever fly (March Fly)



Hymenoptera: Apidae (Bees)

<i>Apis mellifera</i>	Honeybee
<i>Bombus terrestris</i>	Bumblebee
<i>Bombus lucorum</i>	Bumblebee
<i>Bombus pascuorum</i>	Bumblebee



A notable absentee from the list of butterflies is the Small tortoiseshell, *Aglais urticae*. This used to be one of the most common butterflies in gardens and a frequent visitor to *Buddleia* flowers. Its numbers in Surrey have crashed in recent years almost to vanishing point, possibly as a result of parasitism of the caterpillars by a tachinid fly, *Sturmia bella*. This fly was first recorded in Britain in 1998 and has since become widespread south of the Severn-Wash line.

Cultivar List:

No	Plant Name	Sender
1	<i>Buddleja davidii</i> ADONIS BLUE 'Adokeep' PBR	Bund deutscher Baumschulen
2	<i>Buddleja davidii</i> unknown sent as 'African Queen'	Bund deutscher Baumschulen
3	<i>Buddleja davidii</i> 'Autumn Beauty' sent as 'Beijing'	Bund deutscher Baumschulen
4	<i>Buddleja davidii</i> 'Black Knight' AGM(H4)1993, 2010	Bund deutscher Baumschulen
5	<i>Buddleja davidii</i> 'Blue Horizon' AGM(H4)2010	Bund deutscher Baumschulen
6	<i>Buddleja davidii</i> x <i>weyeriana</i> 'Bicolor' syn. 'Flower Power' sent as 'Bonnie'	Bund deutscher Baumschulen
7	<i>Buddleja davidii</i> 'Boskoop Beauty' sent as 'Border Beauty'	Bund deutscher Baumschulen
8	<i>Buddleja davidii</i> 'Burgundy'	Bund deutscher Baumschulen
9	<i>Buddleja davidii</i> CAMBERWELL BEAUTY 'Camkeep' PBR AGM(H4)2010	Bund deutscher Baumschulen
10	<i>Buddleja davidii</i> 'Dartmoor' AGM(H4)1993, 2010	Bund deutscher Baumschulen
11	<i>Buddleja davidii</i> 'Dart's Ornamental White'	Bund deutscher Baumschulen
12	<i>Buddleja davidii</i> 'Dart's Papillon Blue' same as 'Pixie Blue' (32)	Bund deutscher Baumschulen
13	<i>Buddleja davidii</i> 'Dart's Purple Rain'	Bund deutscher Baumschulen
14	<i>Buddleja davidii</i> 'Ecolonia'	Bund deutscher Baumschulen
15	<i>Buddleja davidii</i> 'Empire Blue' AGM(H4)1993 SUNSET 2010	Bund deutscher Baumschulen
16	<i>Buddleja davidii</i> 'Fascinating' incorrect	Bund deutscher Baumschulen
17	<i>Buddleja davidii</i> 'Foxtail'	Bund deutscher Baumschulen
18	<i>Buddleja davidii</i> 'Glasnevin Hybrid' sent as 'Glasnevin Blue'	Bund deutscher Baumschulen
19	<i>Buddleja davidii</i> 'Kalypso'	Bund deutscher Baumschulen
20	<i>Buddleja davidii</i> 'Les Kneale'	Bund deutscher Baumschulen
21	<i>Buddleja davidii</i> NANHO PURPLE = 'Monum' (syn. 'Nanho Petite Plum', 'Nanho Petite Purple', 'Petite Purple'). AGM(H4)2002, 2010	Bund deutscher Baumschulen
22	<i>Buddleja davidii</i> NANHO BLUE = 'Mongo' (syn. 'Nanho Petite Indigo', 'Nanho Petite Plum', 'Nanho Petite Purple', 'Petite Indigo'). AGM(H4)2002, SUNSET 2010	Bund deutscher Baumschulen

23	<i>Buddleja davidii</i> NANHO BLUE = 'Mongo' (syn. 'Nanho Petite Indigo', 'Nanho Petite Plum', 'Nanho Petite Purple', 'Petite Indigo'). AGM(H4)2002, SUNSET 2010 sent as 'Nanho Petite Indigo'	Bund deutscher Baumschulen
24	<i>Buddleja davidii</i> NANHO PURPLE = 'Monum' (syn. 'Nanho Petite Plum', 'Nanho Petite Purple', 'Petite Purple') AGM(H4)2002, 2010 sent as 'Nanho Petite Purple'	Bund deutscher Baumschulen
25	<i>Buddleja davidii</i> 'Nike'	Bund deutscher Baumschulen
26	<i>Buddleja davidii</i> 'Harlequin' sent as MASQUERADE 'Notbud' PBR	Bund deutscher Baumschulen
27	<i>Buddleja davidii</i> 'Orchid Beauty'	Bund deutscher Baumschulen
28	<i>Buddleja davidii</i> PEACOCK 'Peakeep' PBR	Notcutts Nurseries
29	<i>Buddleja</i> 'Pink Delight' AGM(H4)1993, 2010	Bund deutscher Baumschulen
30	<i>Buddleja</i> 'Pink Delight' sent as 'Pink Perfection' AGM(H4)1993, 2010	Bund deutscher Baumschulen
31	<i>Buddleja davidii</i> 'Pink Spread'	Bund deutscher Baumschulen
32	<i>Buddleja davidii</i> 'Pixie Blue' Same as 12 'Dart's Papillon Bleu'	Bund deutscher Baumschulen
33	<i>Buddleja davidii</i> 'Potter's Purple'	Bund deutscher Baumschulen
34	<i>Buddleja davidii</i> PURPLE EMPEROR 'Pyrkeep' PBR	Bund deutscher Baumschulen
35	<i>Buddleja davidii</i> 'Raspberry Wine'	Bund deutscher Baumschulen
36	<i>Buddleja davidii</i> 'Royal Purple'	Bund deutscher Baumschulen
37	<i>Buddleja davidii</i> 'Royal Red' AGM(H4)1993, 2010	Bund deutscher Baumschulen
38	<i>Buddleja davidii</i> 'Silver Lilac' AGM(H4)2010 STA	Bund deutscher Baumschulen
39	<i>Buddleja davidii</i> 'Southcombe Splendour'	Bund deutscher Baumschulen
40	<i>Buddleja davidii</i> 'Summer Beauty'	Bund deutscher Baumschulen
41	<i>Buddleja davidii</i> 'Sunkissed' AGM(H4)2010 STA	Bund deutscher Baumschulen
42	<i>Buddleja davidii</i> 'White Bouquet'	Bund deutscher Baumschulen
43	<i>Buddleja davidii</i> 'White Profusion' AGM(H4)1993, 2010	Bund deutscher Baumschulen
44	<i>Buddleja davidii</i> 'White Spread'	Bund deutscher Baumschulen
45	<i>Buddleja davidii</i> 'White Wings'	Mr P Moore
46	<i>Buddleja</i> SILVER ANNIVERSARY 'Morning Mist' PBR	Bund deutscher Baumschulen
47	<i>Buddleja davidii</i> 'White Ball'	Bund deutscher Baumschulen
48	<i>Buddleja davidii</i> 'Ellen's Blue' AGM(H4)2010 STA	Bund deutscher Baumschulen
49	<i>Buddleja davidii</i> 'Niche's Choice'	Bund deutscher Baumschulen
50	<i>Buddleja davidii</i> MARBLED WHITE 'Markeep'	Bund deutscher Baumschulen
51	<i>Buddleja davidii</i> 'Croyde'	Sampford Shrubs
52	<i>Buddleja davidii</i> 'Blue Horizon' AGM(H4)2010	Sampford Shrubs
53	<i>Buddleja davidii</i> LO AND BEHOLD™ 'Blue Chip'	North Carolina State University
54	<i>Buddleja davidii</i> 'Miss Ruby' AGM(H4)2010 STA	North Carolina State University
55	<i>Buddleja davidii</i> MASQUERADE 'Notbud' PBR	Notcutts Nurseries
56	Left plant unknown sent as <i>Buddleja davidii</i> CAMBERWELL BEAUTY 'Camkeep' PBR	Longstock NPC
57	<i>Buddleja davidii</i> 'Border Beauty' sent as 'Boskoop Beauty'	Longstock NPC
58	<i>Buddleja davidii</i> 'Dubonnet'	Longstock NPC
59	<i>Buddleja davidii</i> 'Flaming Violet'	Longstock NPC
60	<i>Buddleja davidii</i> 'Gonglepod'	Longstock NPC
61	<i>Buddleja davidii</i> 'Ille de France'	Longstock NPC
62	<i>Buddleja davidii</i> NANHO WHITE = 'Monite' (syn. 'Petite	Longstock NPC

	Snow', 'Nanhoensis Alba', <i>B. davidii</i> var. <i>nanhoensis</i> alba). AGM(H4)2010	
63	<i>Buddleja davidii</i> 'Orchid Beauty'	Longstock NPC
64	<i>Buddleja davidii</i> 'Pink Pearl'	Longstock NPC
65	<i>Buddleja davidii</i> 'Summer House Blue'	Longstock NPC
66	<i>Buddleja davidii</i> 'Peace'	Longstock NPC
67	<i>Buddleja davidii</i> 'Windtor'	Longstock NPC
68A	<i>Buddleja davidii</i> MASQUERADE 'Notbud' PBR sent as 'Harlequin'	Longstock NPC
69	<i>Buddleja davidii</i> 'Santana'	Longstock NPC
70	<i>Buddleja davidii</i> 'Variegata'	Longstock NPC
71	<i>Buddleja davidii</i> 'White Cloud'	Longstock NPC
72	<i>Buddleja</i> ADONIS BLUE 'Adokeep'	Notcutts Nurseries
73	<i>Buddleja davidii</i> 'Pixie Red'	The Lavender Garden, NPC
74	<i>Buddleja davidii</i> 'Autumn Beauty' sent as "from Beijing"	RHS Garden Wisley
75	<i>Buddleja davidii</i> 'Charming'	RHS Garden Wisley
76	<i>Buddleja davidii</i> 'Darent Valley' AGM(H4)2010 STA	RHS Garden Wisley
77	<i>Buddleja davidii</i> 'Fortune'	RHS Garden Wisley
78	<i>Buddleja davidii</i> 'Glasnevin Hybrid'	RHS Garden Wisley
79	<i>Buddleja davidii</i> 'Pixie White'	RHS Garden Wisley
80	<i>Buddleja davidii</i> 'Purple Prince'	RHS Garden Wisley
81	<i>Buddleja</i> 'Moonlight'	The Lavender Garden, NPC
82	<i>Buddleja davidii</i> 'White Butterfly'	RHS Garden Wisley
83	<i>Buddleja davidii</i> 'Purple Cascade'	Ferdinandushof Nursery
84	<i>Buddleja davidii</i> 'Thundercloud'	Ferdinandushof Nursery
85	<i>Buddleja davidii</i> 'Panache'	Liss Forest Nursery
86	<i>Buddleja davidii</i> 'Red Admiral'	Liss Forest Nursery
87	<i>Buddleja davidii</i> 'Fortune' Identification questioned	Southcombe Garden Nursery
88	<i>Buddleja davidii</i> 'Malvern Blue'	Southcombe Garden Nursery
89	<i>Buddleja davidii</i> 'Spikehead'	Southcombe Garden Nursery
90	<i>Buddleja davidii</i> 'Widecombe'	Southcombe Garden Nursery
91	<i>B. davidii</i> 'West Hill' AGM(H4)2010 STA sent as <i>Buddleja davidii</i> var. <i>veitchiana</i>	Trecanna Nursery
92	<i>Buddleja davidii</i> 'Orpheus'	The Lavender Garden, NPC
93	<i>Buddleja davidii</i> 'Purple Friend'	The Lavender Garden, NPC
94	<i>Buddleja davidii</i> 'Persephone'	The Lavender Garden, NPC
95	<i>Buddleja davidii</i> 'Twotones'	The Lavender Garden, NPC
96	<i>Buddleja davidii</i> 'Shire Blue'	The Lavender Garden, NPC
97	<i>Buddleja davidii</i> 'Grey Dawn'	The Lavender Garden, NPC
98	<i>Buddleja davidii</i> 'Dudley's Compact Lavender'	Longstock NPC
99	<i>Buddleja davidii</i> 'Leela Kapila'	Longstock NPC
100	<i>Buddleja davidii</i> 'Castle School'	Sampford Shrubs
101	<i>Buddleja</i> 'Operette'	Mr I Dickings
102	<i>Buddleja davidii</i> 'Sugar Plum'	Mr P Moore
103	<i>Buddleja weyeriana</i> 'Pink Pagoda'	Mr P Moore
104	<i>Buddleja davidii</i> 'Antoinette'	Shapcott Garden Nursery
105	<i>Buddleja davidii</i> 'Bishop's Velvet'	Shapcott Garden Nursery
106	<i>Buddleja davidii</i> 'Brown's Blue'	Shapcott Garden Nursery
107	<i>Buddleja davidii</i> 'Greenway's River Dart'	Shapcott Garden Nursery

108	<i>Buddleja davidii</i> 'Isle de France 1'	Shapcott Garden Nursery
109	<i>Buddleja davidii</i> 'Lyme Bay'	Shapcott Garden Nursery
110	<i>Buddleja davidii</i> 'Shapcott Lavender'	Shapcott Garden Nursery
111	<i>Buddleja davidii</i> 'Shapcott Violet'	Shapcott Garden Nursery
112	<i>Buddleja davidii</i> No. 77	Shapcott Garden Nursery
113	<i>Buddleja davidii</i> No. 78	Shapcott Garden Nursery
114	<i>Buddleja davidii</i> 'Heath'	Mr I Dickings
115	<i>Buddleja</i> 'African Queen'	The Lavender Garden, NPC
116	<i>Buddleja</i> 'Black Knight' AGM(H4)1993, 2010	The Lavender Garden, NPC
117	<i>Buddleja</i> 'Lilac Moon'	The Lavender Garden, NPC
118	<i>Buddleja</i> 'David Griffin'	Liss Forest Nursery
	Planted at Deer's Farm	
1	<i>Buddleja</i> 'Reve de Papillon' white	Minier Nurseries
2	<i>Buddleja</i> 'Reve de Papillon' red	Minier Nurseries
3	<i>Buddleja</i> 'Reve de Papillon' blue	Minier Nurseries
4	<i>Buddleja</i> NC2005-8	Dennis Werner
5	<i>Buddleja davidii</i> 'Anita Allen' No. 77	Shapcott Garden Nursery
6	<i>Buddleja davidii</i> 'White Bouquet'	Shapcott Garden Nursery
7	<i>Buddleja davidii</i> 'White Cloud'	Shapcott Garden Nursery

STA = subject to availability

Senders

Ferdinandushof Nursery, Rode Sluisweg 13, 4575 NE Overslag, The Netherlands

Liss Forest Nursery Ltd, Petersfield Road, Greatham, Liss, Hants GU33 6HA

Mr P Moore, Longstock Park Nursery, Longstock, Stockbridge, Hampshire SO20 6EH

RHS Garden Wisley, Woking, Surrey GU23 6QB

Sampford Shrubs, Sampford Peverell, Tiverton, Devon EX16 7EN

Shapcott Barton Estate, East Knowstone, South Molton, Devon, EX36 4EE

Southcombe Garden Nursery, Southcombe Gardens, 2 Willens Cottages, Kenton, Exeter, Devon EX6 8HQ

The Lavender Garden National Plant Collection, Ashcroft Nurseries, Kingscote, Tetbury, Nr. Dursley GL8 8YF

Trecanna Nursery, Trecanna Nursery, Latchley, Nr Gunnislake, Cornwall PL18 9AX

Mr D Werner, JC Raulston Arboretum, Department of Horticultural Science, Box 7522

North Carolina State University, Raleigh, North Carolina, USA

C/o The Trials Office, Mr I Dickings & Mr M Foster