



McLaughlin & Associates

National Survey Results

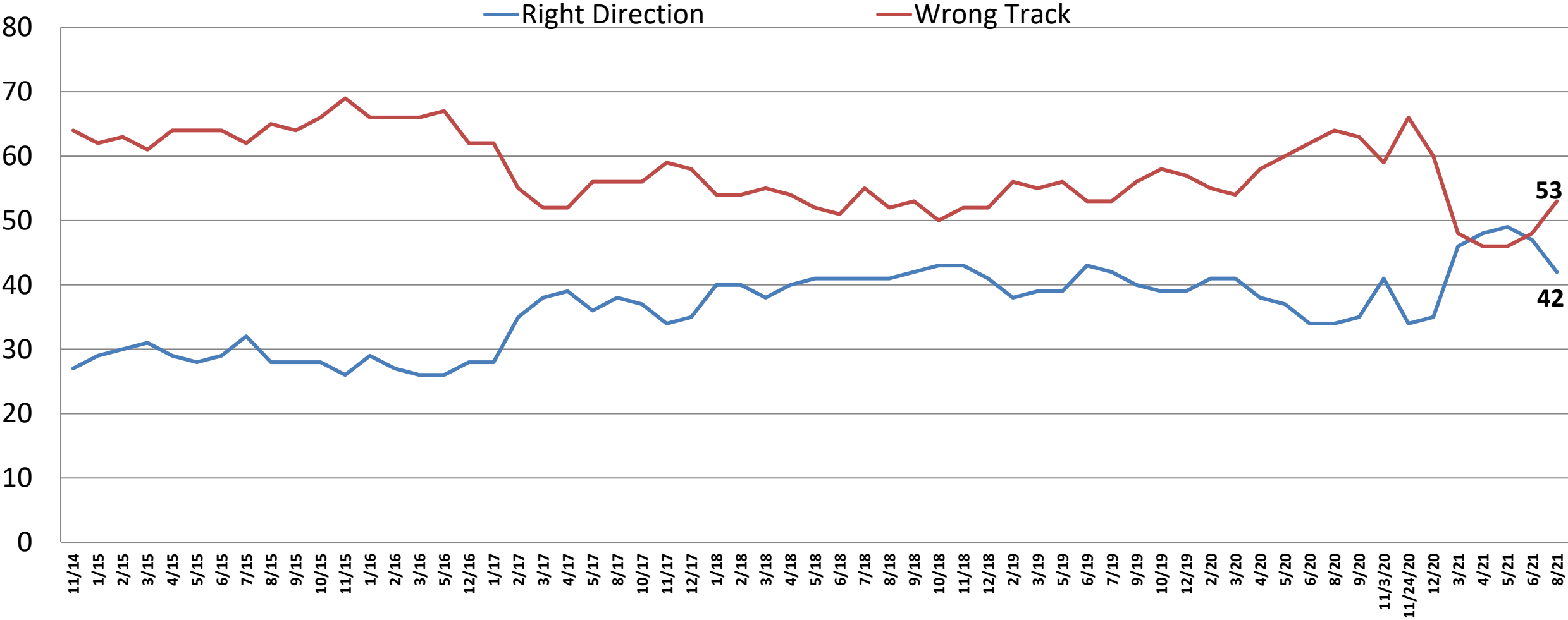
General Election Likely Voters

Political Environment, Trends & Analysis

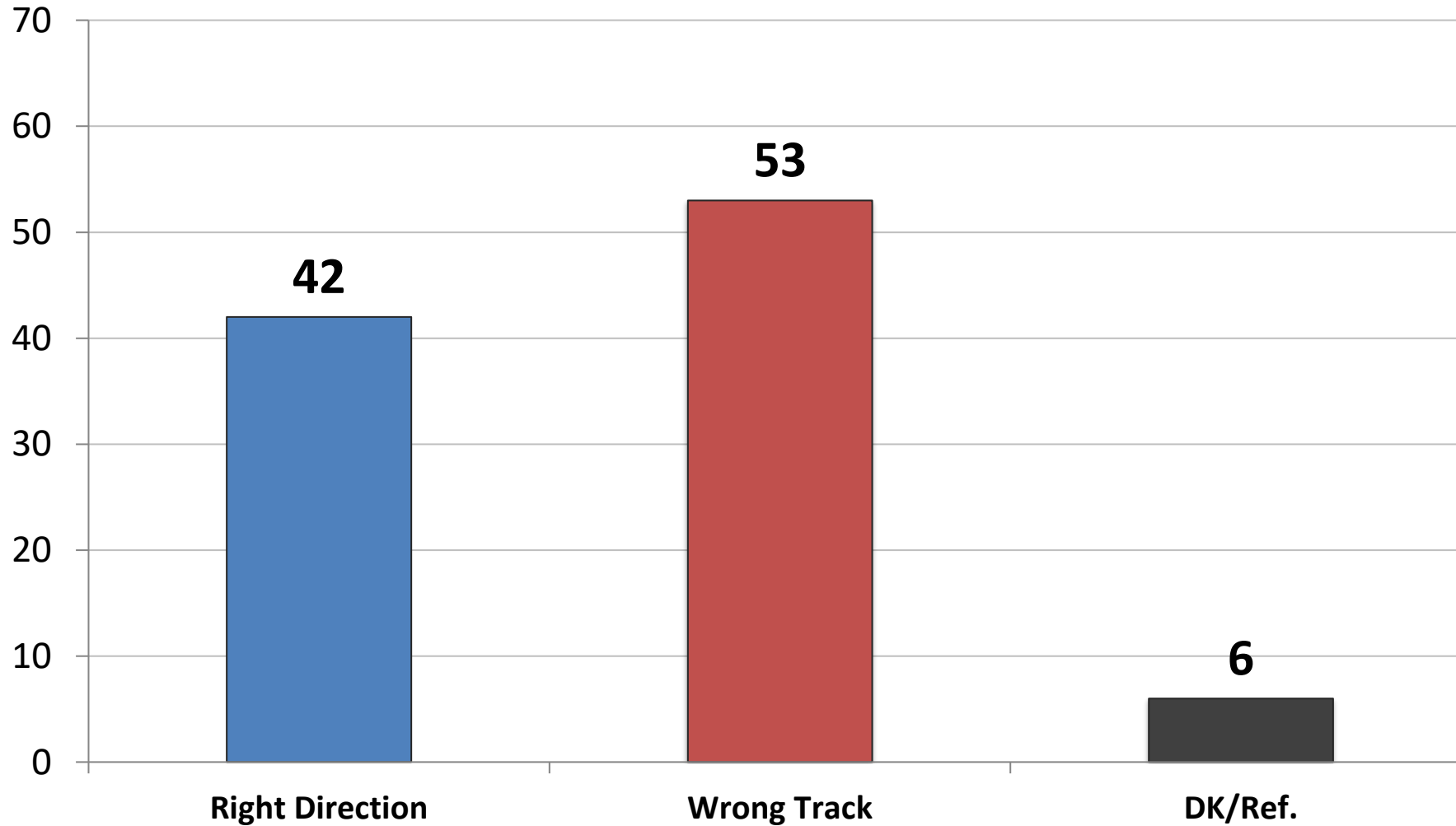
- Field Dates: July 29 to August 3, 2021
- www.mclaughlinonline.com

Direction: United States

Time Series



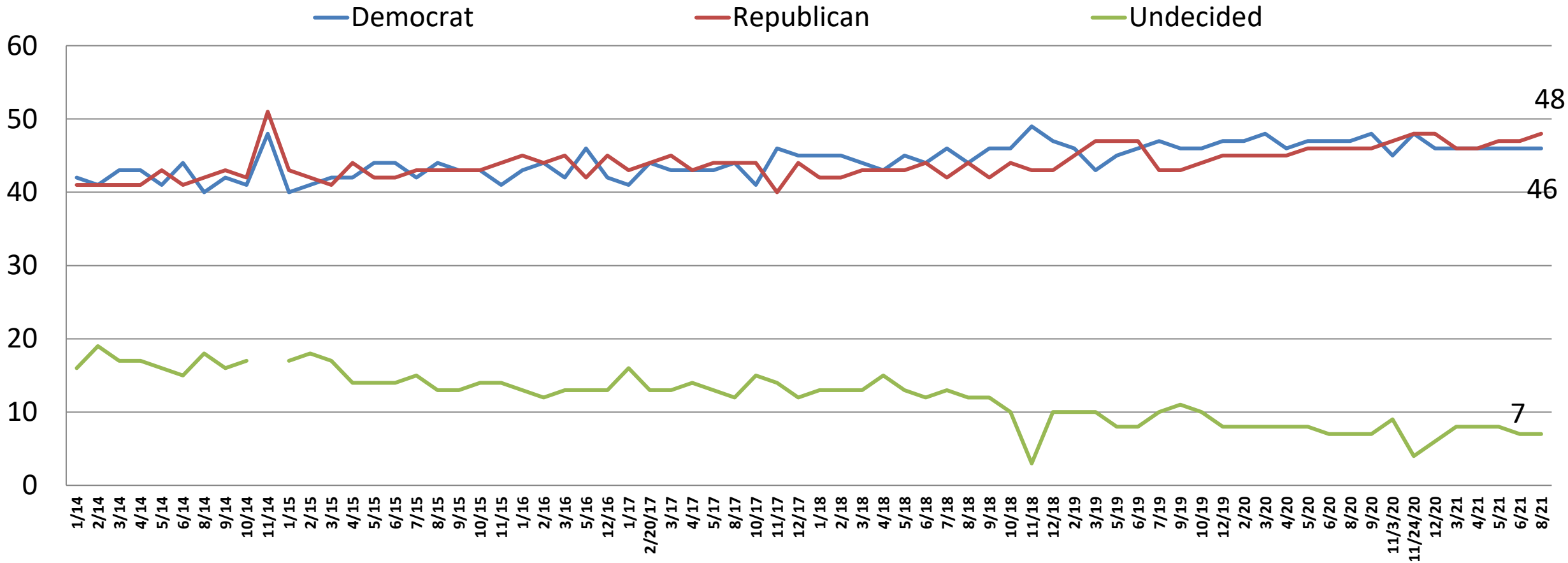
Direction: *United States*



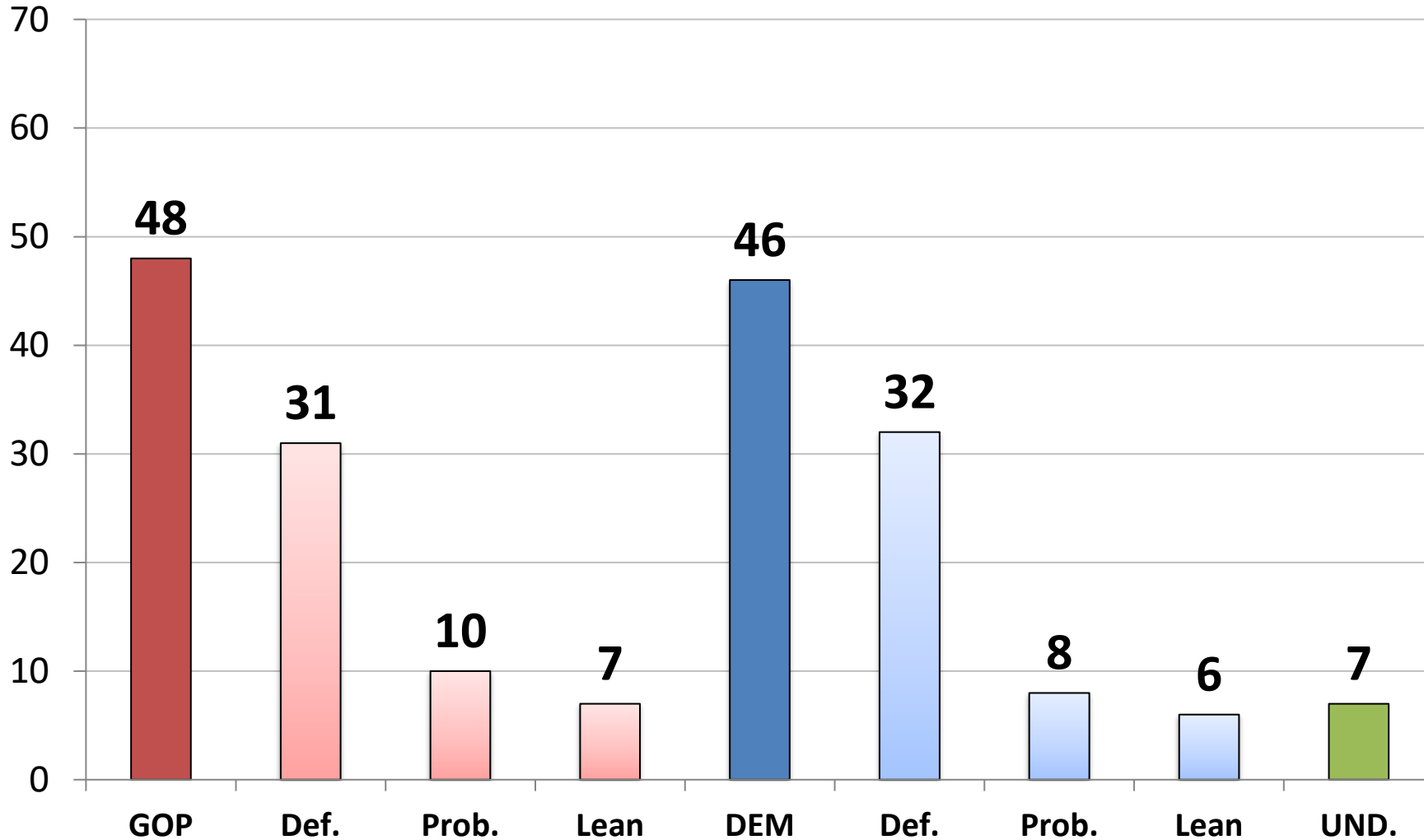
	R	W
East	51	42
Midwest	35	60
South	39	57
West	46	47
Vote Trump 2020	11	86
Vote Biden 2020	70	23
Vote Cong. – GOP	14	83
Vote Cong. – DEM	73	20
Vote Cong. – UND	25	59
Approve Biden	74	19
Disapprove Biden	5	93
Republican	14	84
Democrat	74	20
Independent	35	56
Liberal	73	22
Moderate	45	46
Conservative	15	83
White	36	60
African- American	65	26
Hispanic	43	54
Under 55	44	49
Over 55	39	58
Married	43	53
Single	42	48
Men	46	52
Women	38	54
Live in Urban Area	49	45
Live in Suburban Area	42	53
Live in Rural Area	29	64

Generic Ballot: U.S. Congress

Time Series



Generic Ballot: *U.S. Congress*

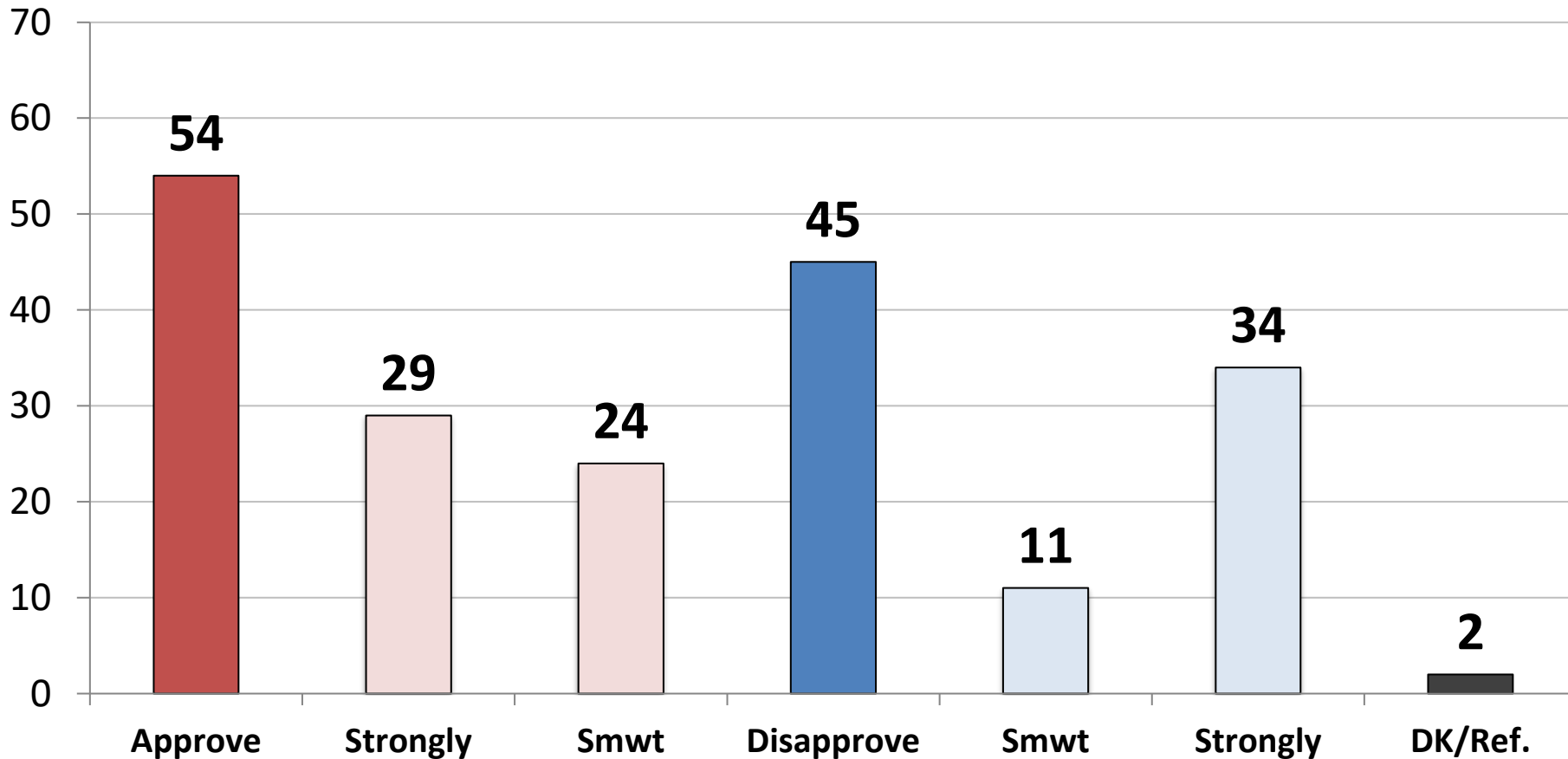


	GOP	DEM.	UND.
East	34	59	7
Midwest	52	43	5
South	51	43	6
West	49	41	10
Vote Trump 2020	91	3	6
Vote Biden 2020	8	85	7
Vote Cong. – GOP	100	0	0
Vote Cong. – DEM	0	100	0
Vote Cong.– UND	0	0	100
Approve Biden	14	79	7
Disapprove Biden	89	6	5
Republican	96	2	2
Democrat	2	97	1
Independent	45	34	22
Liberal	12	86	2
Moderate	35	51	14
Conservative	87	9	5
White	55	39	6
African- American	14	78	7
Hispanic	45	50	4
Under 55	45	48	7
Over 55	51	42	7
Married	53	41	6
Single	41	51	8
Men	51	42	7
Women	45	49	7
Live in Urban Area	35	57	8
Live in Suburban Area	50	44	6
Live in Rural Area	60	32	7

Job Rating: *Joe Biden*

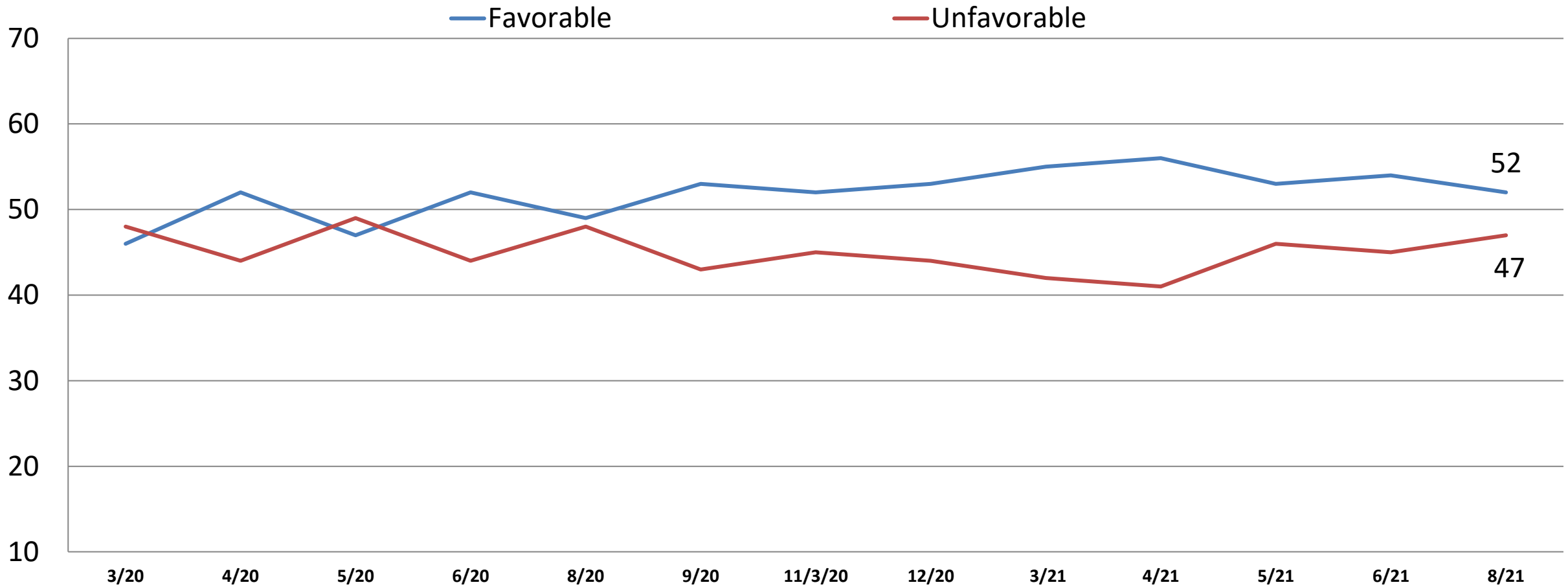
	3/21	4/21	5/21	6/21	8/21
Approve	55	58	56	55	54
Disapprove	40	41	43	44	45

	App.	Disapp.
East	63	36
Midwest	47	51
South	51	47
West	57	40
Vote Trump 2020	12	86
Vote Biden 2020	91	7
Vote Cong. – GOP	16	83
Vote Cong. – DEM	93	6
Vote Cong.– UND	55	33
Approve Biden	100	0
Disapprove Biden	0	100
Republican	16	83
Democrat	92	7
Independent	50	45
Liberal	91	8
Moderate	61	35
Conservative	18	82
White	45	54
African- American	83	12
Hispanic	58	41
Under 55	58	40
Over 55	48	51
Married	51	48
Single	61	36
Men	54	45
Women	53	45
Live in Urban Area	66	32
Live in Suburban Area	51	47
Live in Rural Area	39	58

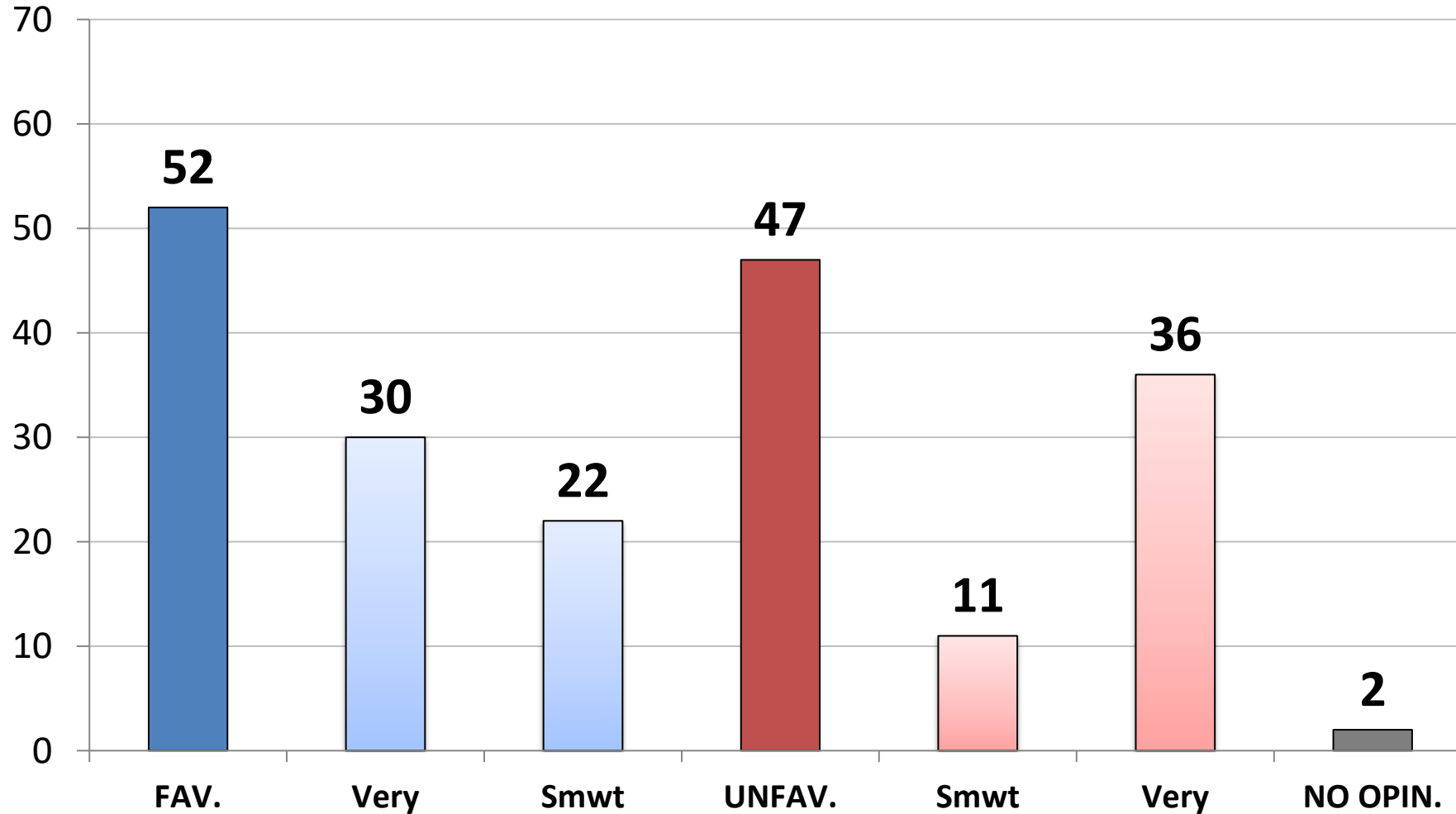


Opinion: Joe Biden

Time Series



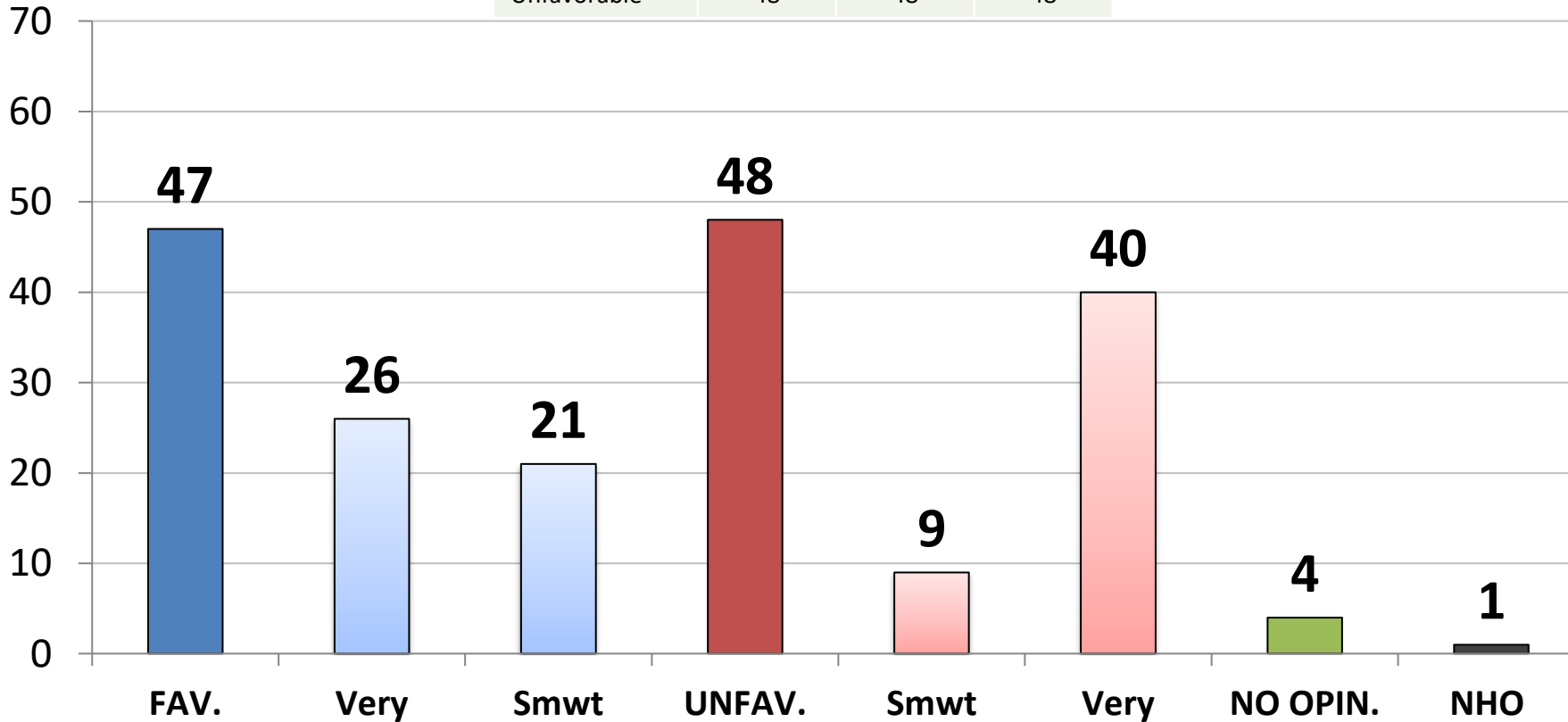
Opinion: *Joe Biden*



	Fav.	Unfav.
East	63	36
Midwest	47	52
South	48	50
West	54	44
Vote Trump 2020	10	89
Vote Biden 2020	90	8
Vote Cong. – GOP	14	85
Vote Cong. – DEM	91	8
Vote Cong.– UND	55	39
Approve Biden	92	7
Disapprove Biden	5	94
Republican	13	87
Democrat	91	7
Independent	49	47
Liberal	87	12
Moderate	62	34
Conservative	15	85
White	44	54
African- American	83	14
Hispanic	53	45
Under 55	55	43
Over 55	47	52
Married	49	50
Single	57	40
Men	52	47
Women	51	46
Live in Urban Area	67	32
Live in Suburban Area	48	50
Live in Rural Area	37	60

Opinion: *Kamala Harris*

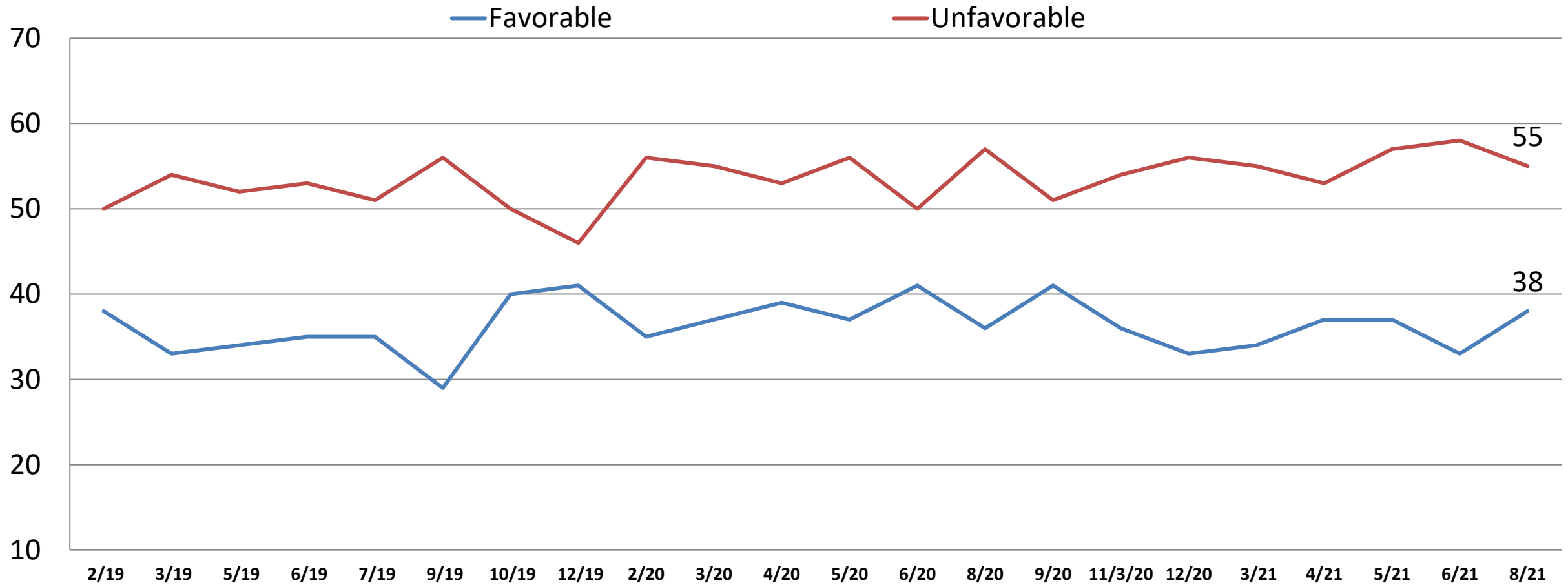
	5/21	6/21	8/21
Favorable	47	47	47
Unfavorable	48	48	48



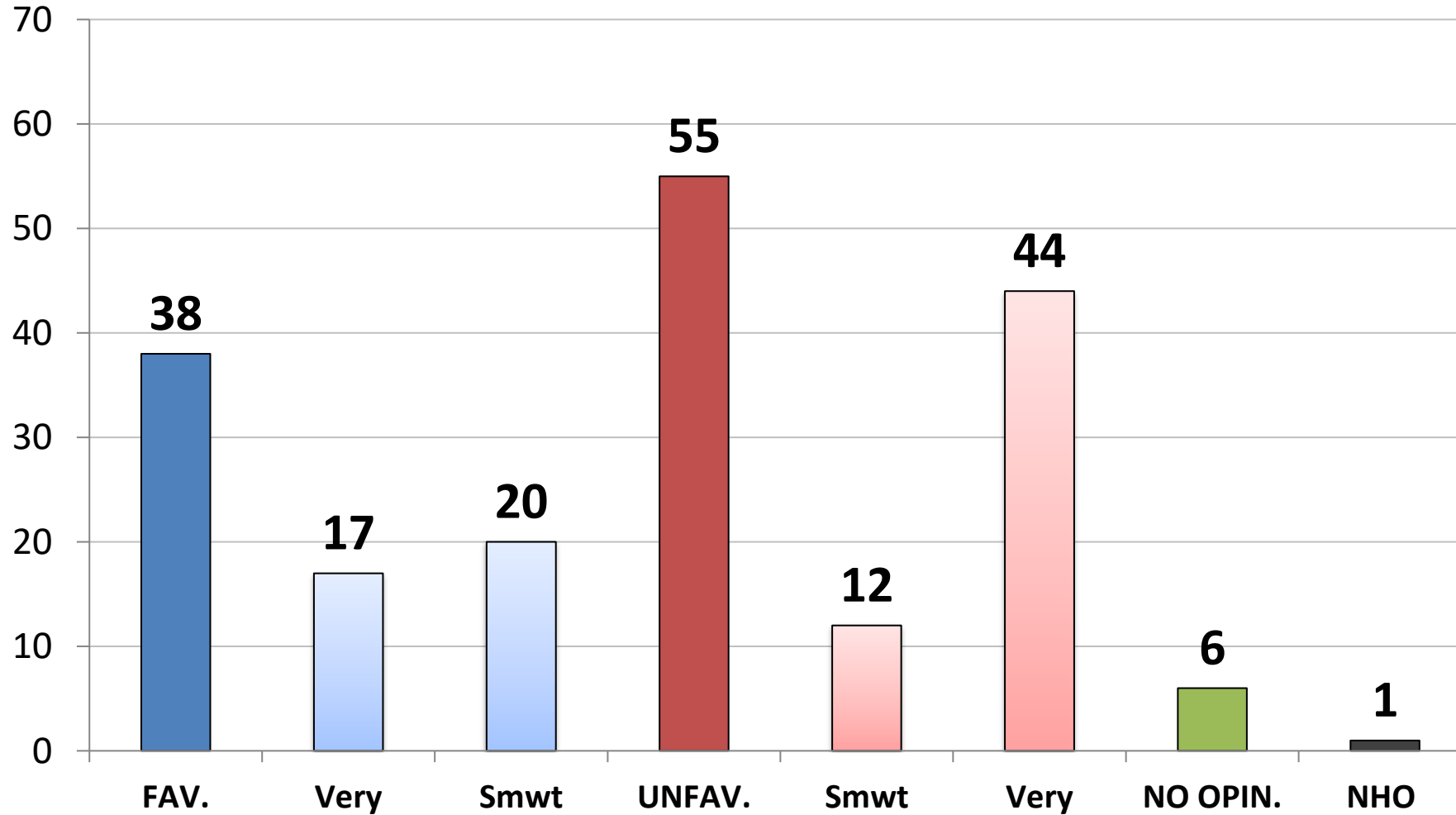
	Fav.	Unfav.
East	55	39
Midwest	45	52
South	45	49
West	47	50
Vote Trump 2020	8	88
Vote Biden 2020	83	12
Vote Cong. – GOP	11	84
Vote Cong. – DEM	85	11
Vote Cong.– UND	43	43
Approve Biden	83	12
Disapprove Biden	4	92
Republican	10	87
Democrat	87	10
Independent	42	48
Liberal	81	13
Moderate	56	37
Conservative	12	86
White	39	57
African- American	79	14
Hispanic	50	44
Under 55	49	44
Over 55	45	53
Married	44	52
Single	50	42
Men	44	51
Women	50	45
Live in Urban Area	63	32
Live in Suburban Area	42	53
Live in Rural Area	33	61

Opinion: Nancy Pelosi

Time Series



Opinion: *Nancy Pelosi*



	Fav.	Unfav.
East	45	49
Midwest	35	60
South	36	56
West	37	55
Vote Trump 2020	6	90
Vote Biden 2020	67	23
Vote Cong. – GOP	9	88
Vote Cong. – DEM	70	21
Vote Cong.– UND	20	58
Approve Biden	67	24
Disapprove Biden	4	93
Republican	10	88
Democrat	74	17
Independent	25	64
Liberal	72	20
Moderate	39	51
Conservative	9	88
White	31	64
African- American	64	23
Hispanic	40	49
Under 55	38	52
Over 55	38	60
Married	38	58
Single	36	51
Men	38	56
Women	37	55
Live in Urban Area	52	40
Live in Suburban Area	33	61
Live in Rural Area	26	66

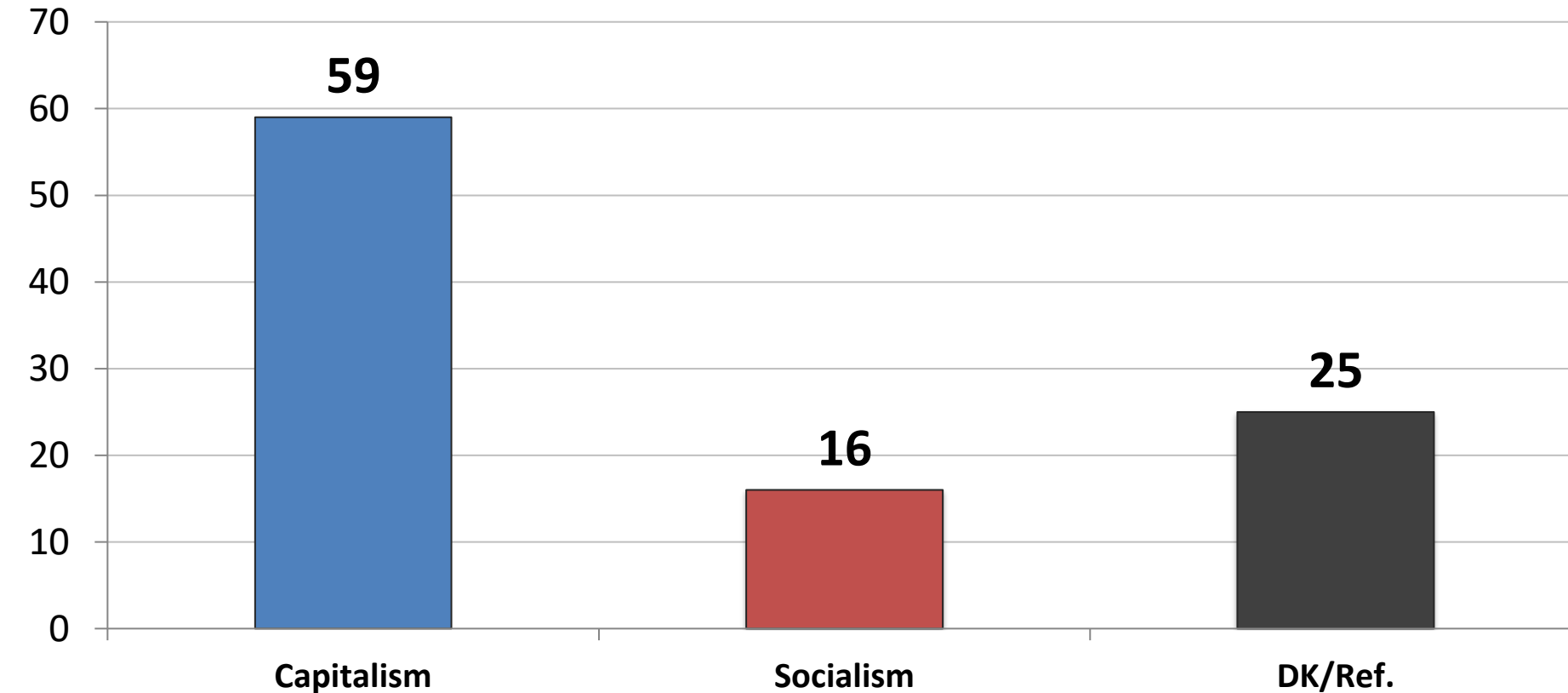
All things being equal, do you prefer:

1. *Free Market Capitalism*

or.

2. *Big Government Socialism*

	7/19	9/19	10/19	12/19	2/20	3/20	4/20	5/20	6/20	8/20	9/20	11/20	12/20	3/21	4/21	5/21	6/21	8/21
Capitalism	60	61	63	60	61	62	59	61	62	59	60	76	58	60	63	64	63	59
Socialism	14	15	14	16	12	13	17	16	15	17	18	24	16	18	19	15	17	16



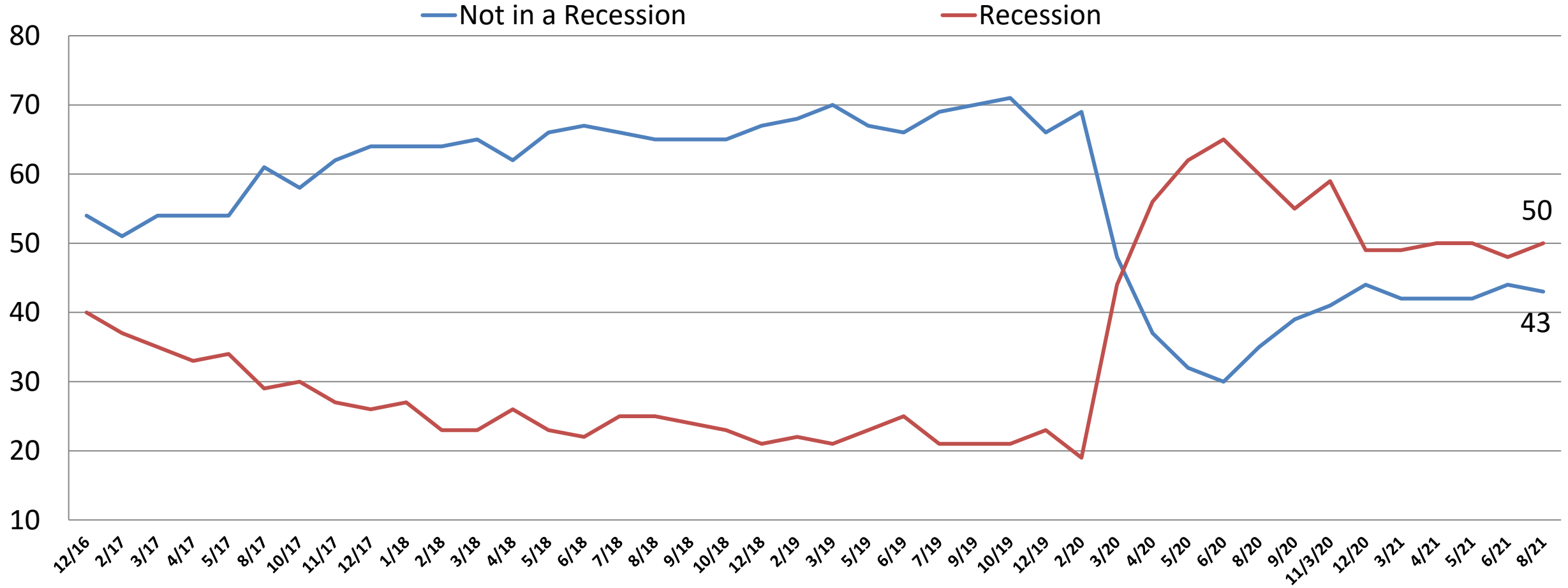
	<u>C</u>	<u>S</u>
East	56	21
Midwest	61	15
South	60	14
West	59	14
Vote Trump 2020	78	4
Vote Biden 2020	42	26
Vote Cong. – GOP	79	5
Vote Cong. – DEM	43	28
Vote Cong.– UND	34	6
Approve Biden	46	24
Disapprove Biden	77	5
Republican	80	4
Democrat	44	27
Independent	53	15
Liberal	42	38
Moderate	48	9
Conservative	83	4
White	66	12
African- American	37	28
Hispanic	52	24
Under 55	57	18
Over 55	63	12
Married	64	14
Single	54	20
Men	70	16
Women	49	15
Live in Urban Area	53	18
Live in Suburban Area	65	16
Live in Rural Area	58	10

Now, from the following list, which issue is personally most important to you?

	4/20	5/20	6/20	8/20	9/20	12/20	3/21	4/21	5/21	6/21	8/21	Rep	Dem	Ind	Lib	Mod	Cons	Under 55	Over 55	Men	Women
SOCIAL	18	20	30	23	27	22	22	27	24	28	24	12	34	25	40	25	10	27	20	23	24
Affordable Health care	7	7	7	6	7	7	7	7	7	9	7	3	10	8	8	8	5	8	5	6	8
Reduce Climate Change	4	6	5	4	5	3	5	6	5	5	7	4	11	5	14	7	1	7	6	7	7
Protect Medicare	4	4	5	5	6	4	4	5	4	5	4	2	5	3	5	4	2	2	6	3	4
Improving Education	3	4	5	4	3	3	2	4	3	4	4	1	4	6	6	4	2	6	0	4	4
Improve Race Relations	*	*	8	7	6	5	4	6	4	4	3	1	5	3	7	2	0	4	2	4	2
ECONOMIC	26	31	22	23	22	26	25	21	27	25	24	29	19	26	17	26	29	29	18	25	23
Reopening the Economy	11	16	11	13	10	12	13	9	15	7	5	7	5	4	5	6	5	7	4	5	6
Reduce Gov't Waste	4	3	4	3	3	4	5	6	5	6	5	6	4	4	2	4	7	5	4	6	3
Create Jobs	5	7	8	7	9	9	7	7	8	6	7	8	6	6	6	9	6	9	4	7	7
Reduce Inflation	*	*	*	*	*	*	*	*	*	5	7	8	5	11	4	7	11	8	7	7	8
SECURITY	6	5	11	13	12	11	14	20	20	20	17	28	9	15	11	10	29	13	23	20	15
Fix Immigration	3	2	3	2	2	3	4	5	12	11	11	20	3	11	4	6	21	7	18	12	11
National Security/Terrorism	3	3	3	4	4	3	5	3	5	5	4	5	3	3	4	2	5	3	5	6	2
Fight Crime/Law & Order	*	*	5	5	6	5	6	12	3	4	2	3	3	1	3	1	3	3	1	2	2
CORONAVIRUS	41	31	24	30	25	30	27	21	16	14	20	9	32	17	27	23	11	19	21	18	21
Stop Spread	22	15	13	17	17	21	17	15	11	10	16	7	27	12	22	17	10	15	17	14	17
Distribute Vaccine	*	*	*	*	*	*	10	7	5	4	4	2	6	4	5	5	2	4	4	4	4
HONESTY/INTEGRITY/D.C.	8	11	10	10	11	10	9	9	11	8	9	11	5	11	4	9	12	7	11	8	10
RE-EXAMINING 2020 ELEC.	*	*	*	*	*	*	*	*	*	4	5	10	0	6	1	5	10	5	6	6	5
DK/Refused	2	1	2	2	3	2	2	2	3	2	1	1	1	1	1	2	0	1	1	0	2

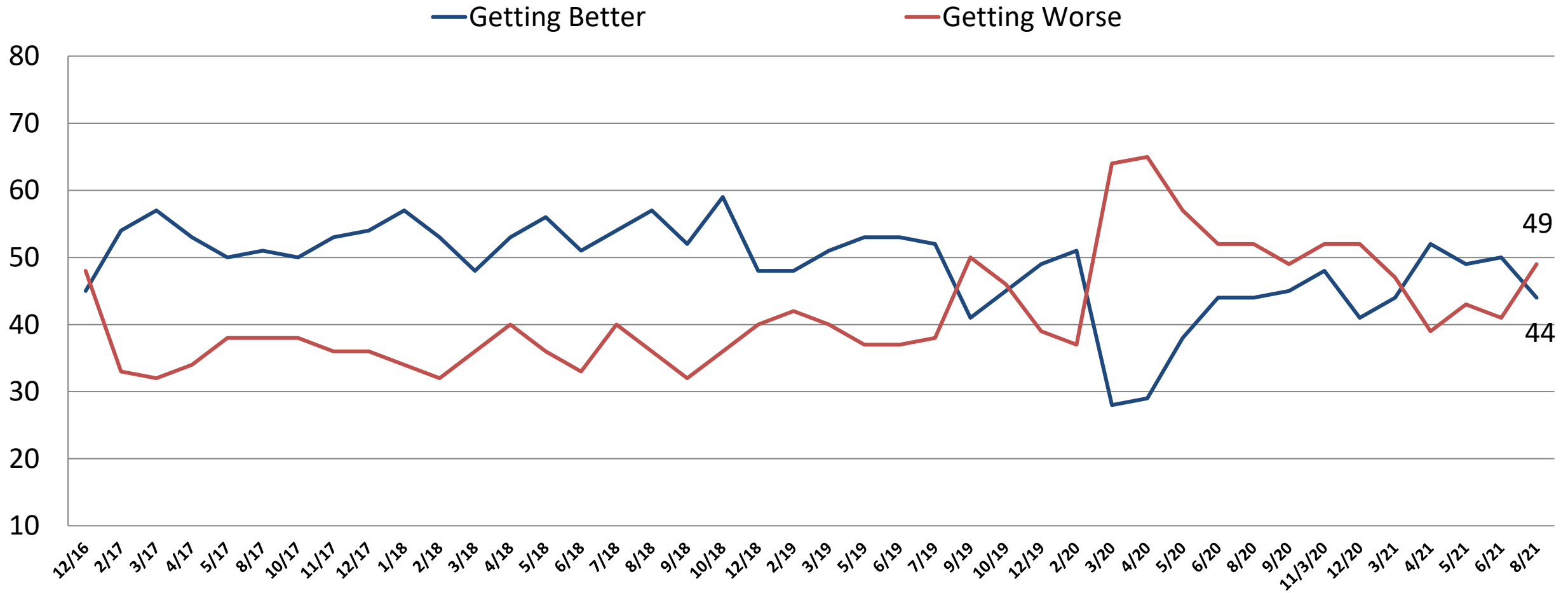
Current Opinion of the U.S. Economy

Time Series



Current Opinion of the U.S. Economy

Time Series



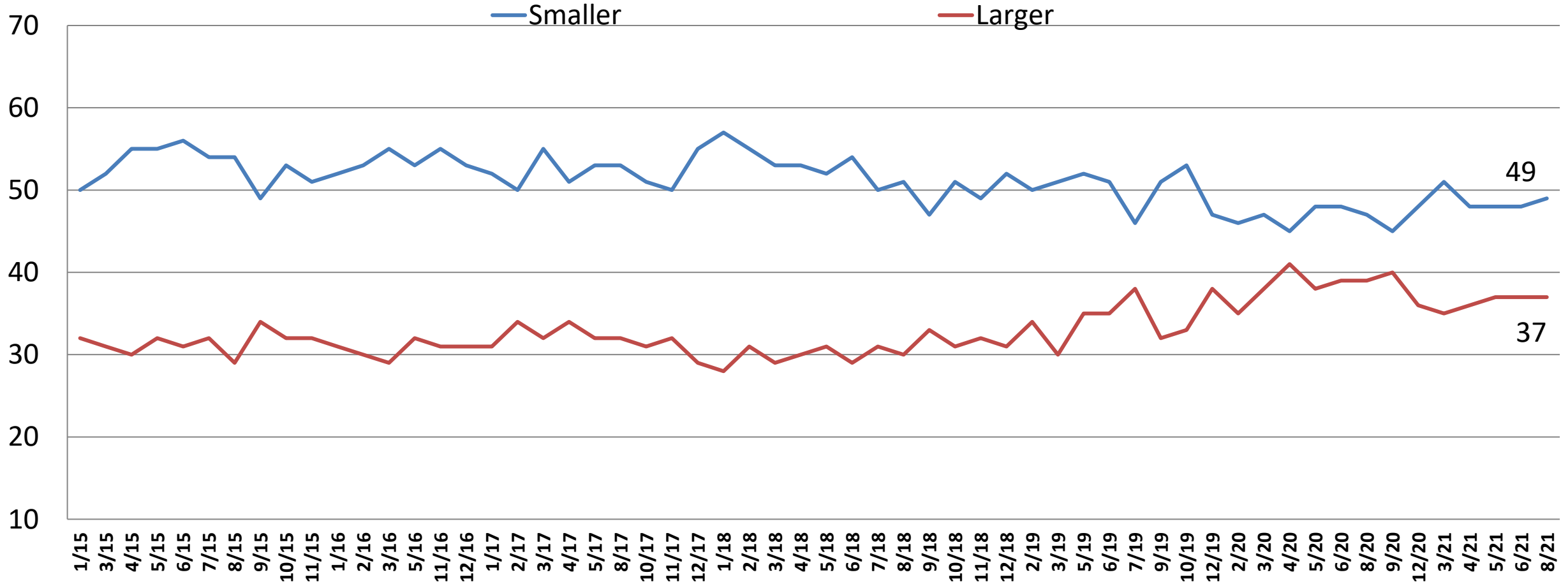
Current Opinion of the U.S. Economy

Time Series

	<u>9/19</u>	<u>10/19</u>	<u>12/19</u>	<u>2/20</u>	<u>3/20</u>	<u>4/20</u>	<u>5/20</u>	<u>6/20</u>	<u>8/20</u>	<u>9/20</u>	<u>11/20</u>	<u>12/20</u>	<u>3/21</u>	<u>4/21</u>	<u>5/21</u>	<u>6/21</u>	<u>8/21</u>	Rep	Dem	Ind	Lib	Mod	Con	<u>Under 55</u>	<u>Over 55</u>	Men	Women	
NOT RECESSION	70	71	66	69	48	37	32	30	35	39	41	44	42	42	42	44	43	42	46	41	48	40	41	44	41	51	35	
Getting Better	33	36	38	43	17	14	12	16	18	21	20	23	17	21	21	22	21	13	31	19	35	19	12	22	20	28	15	
Getting Worse	37	35	28	27	30	24	20	15	17	18	21	21	24	21	21	21	22	29	15	22	13	21	30	23	21	23	21	
RECESSION	21	21	23	19	44	56	62	65	60	55	59	49	49	50	50	48	50	52	47	50	46	48	54	48	52	43	56	
Getting Better	8	9	12	9	11	15	25	29	26	25	28	18	26	31	28	28	23	13	33	23	30	28	13	25	20	21	25	
Getting Worse	14	11	11	11	34	41	37	37	34	31	31	31	23	18	22	20	27	39	15	27	16	20	41	23	31	22	31	
D.K./REFUSED	9	9	12	12	9	7	6	4	5	6	0	8	9	8	8	8	8	6	7	9	6	12	4	7	8	6	9	
GETTING BETTER	41	45	49	52	28	29	38	44	44	45	48	41	44	52	49	50	44	26	63	42	65	48	25	47	40	49	40	
GETTING WORSE	50	46	39	39	64	65	57	52	52	49	52	52	47	39	43	41	49	68	30	49	29	41	71	46	52	46	51	
D.K./REFUSED	9	9	12	12	9	7	6	4	5	6	0	8	9	8	8	8	8	6	7	9	6	12	4	7	8	6	9	
Net Diff.	-10	-1	10	13	-36	-37	-19	-8	-8	-4	-3	-11	-4	13	6	9	-5	-42	34	-7	36	7	-47	1	-12	3	-12	

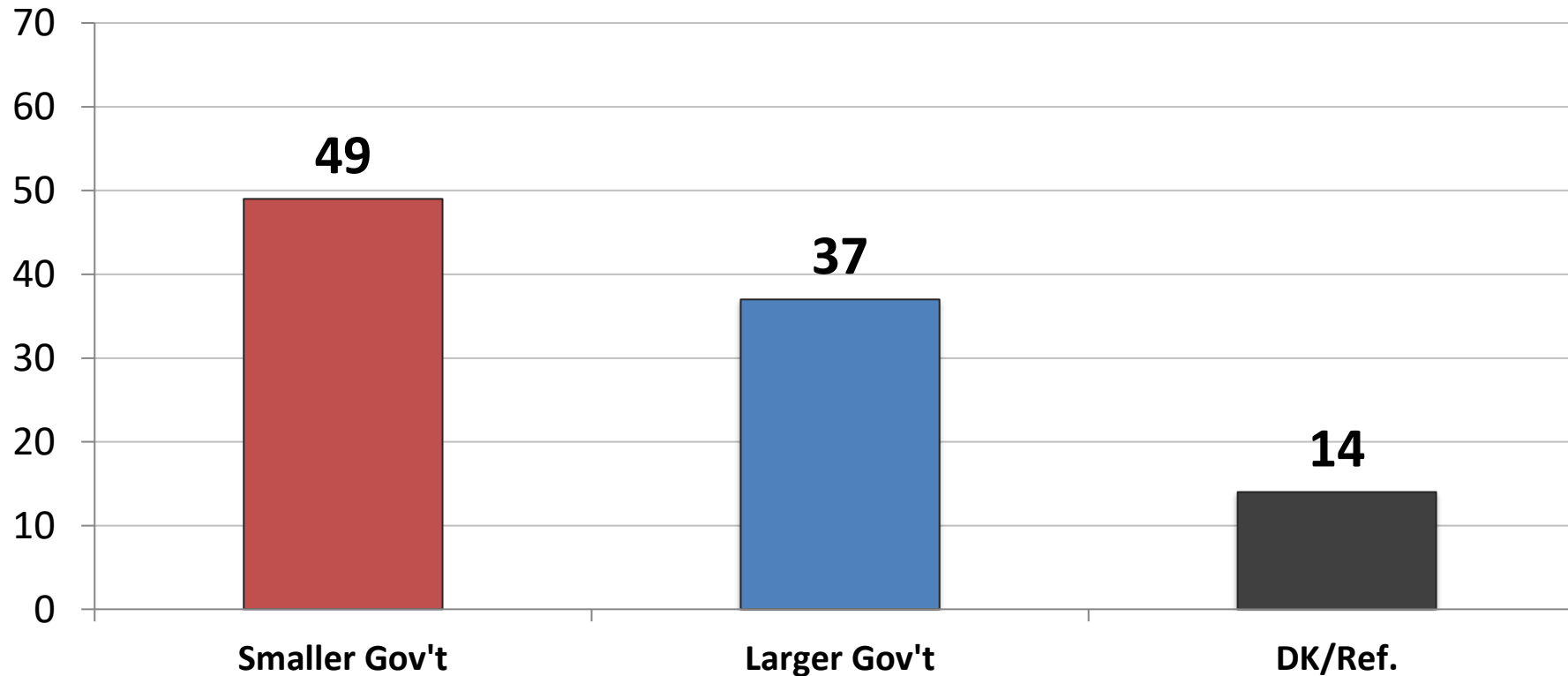
Would you say you most favor a smaller government with fewer services or a larger government with many services?

Time Series



Would you say you most favor a smaller government with fewer services or a larger government with many services?

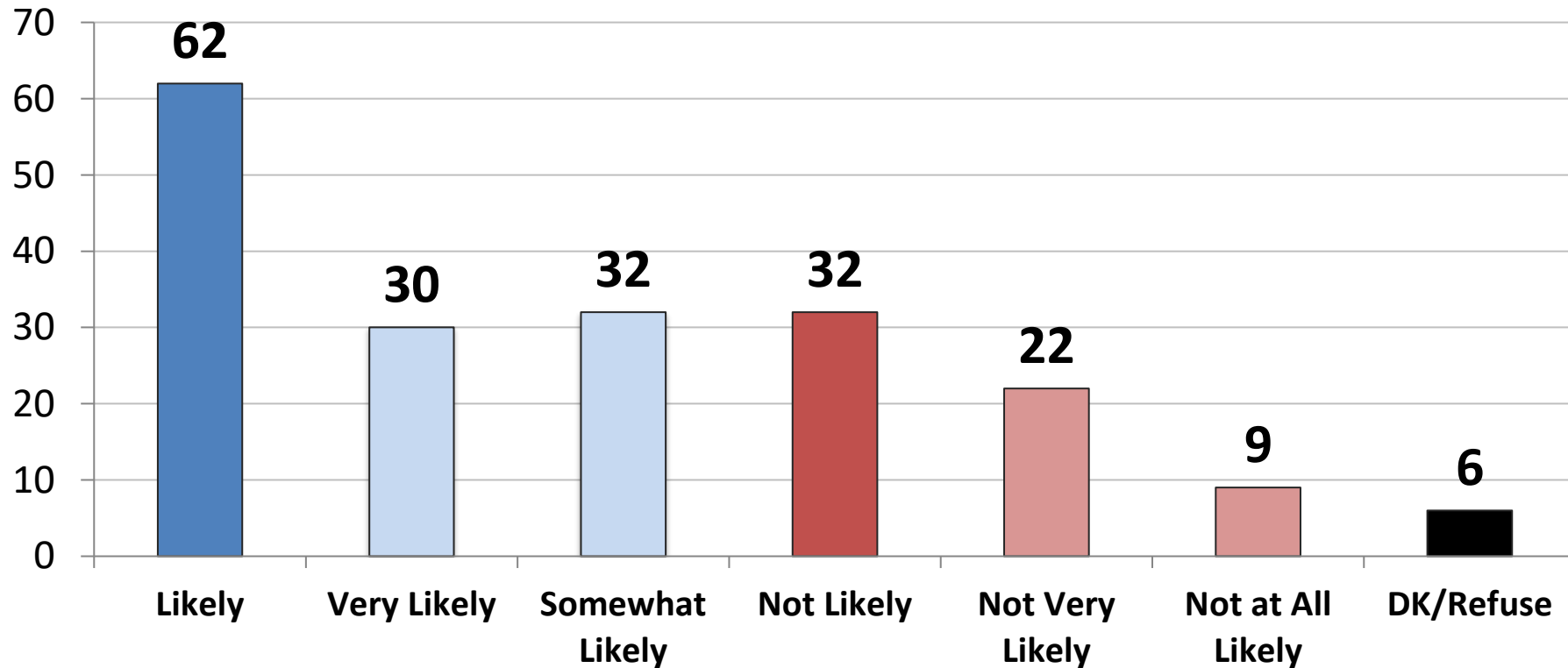
	3/21	4/21	5/21	6/21	8/21
Smaller Gov't	51	48	48	48	49
Larger Gov't	35	36	37	37	37



	Smaller	Larger
East	41	44
Midwest	53	35
South	53	33
West	45	41
Vote Trump 2020	71	17
Vote Biden 2020	28	56
Vote Cong. – GOP	72	17
Vote Cong. – DEM	26	59
Vote Cong. – UND	38	34
Approve Biden	29	56
Disapprove Biden	73	15
Republican	73	15
Democrat	27	59
Independent	47	37
Liberal	27	61
Moderate	42	39
Conservative	73	17
White	56	31
African- American	27	60
Hispanic	38	47
Under 55	45	40
Over 55	54	33
Married	54	34
Single	42	42
Men	54	37
Women	44	37
Live in Urban Area	38	49
Live in Suburban Area	52	34
Live in Rural Area	58	27

Joe Biden was 78-years old when he was sworn in and will be 82 at the end of his term. How likely is it that Vice-President Kamala Harris will be president before the end of Joe Bidens 4-Year term?

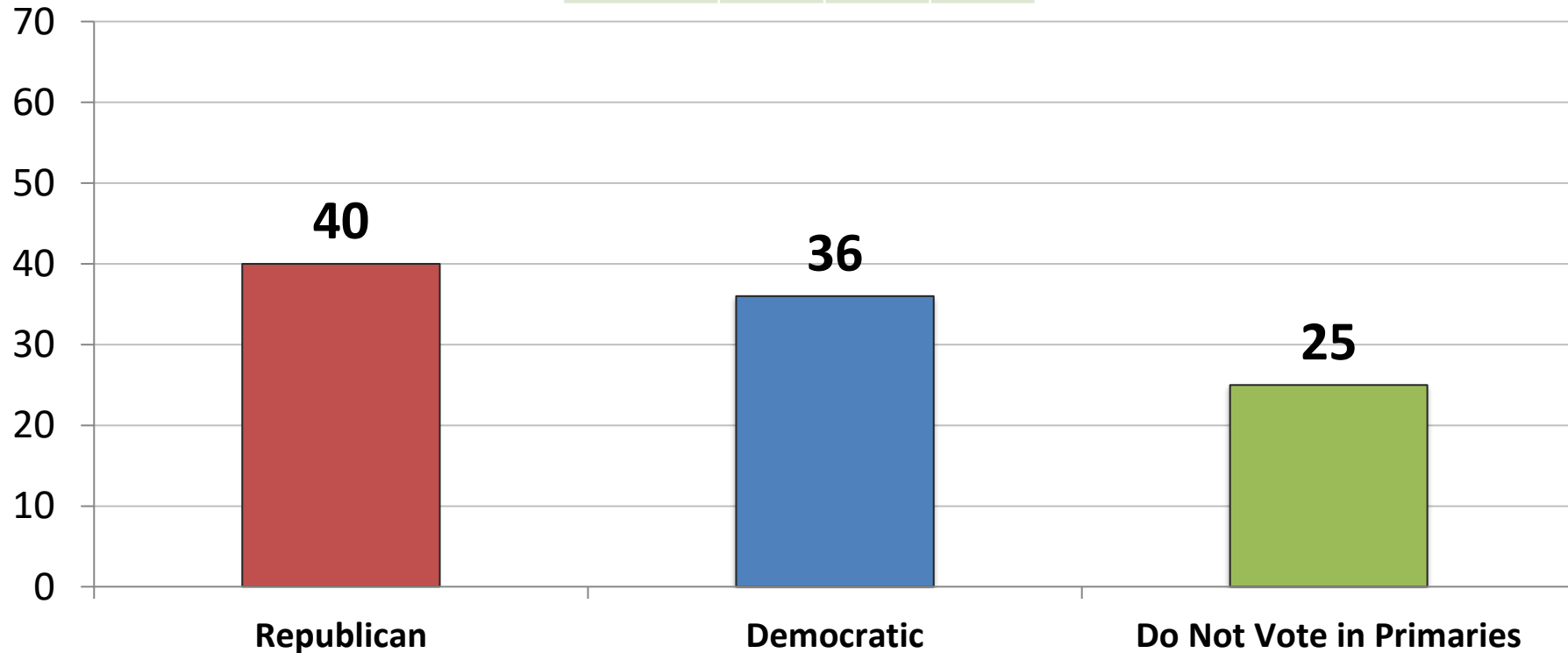
	5/21	6/21	8/21
Likely	64	63	62
Not Likely	31	30	32



	Likely	Not
East	61	31
Midwest	57	37
South	64	30
West	65	30
Vote Trump 2020	74	20
Vote Biden 2020	50	43
Vote Cong. – GOP	73	21
Vote Cong. – DEM	50	44
Vote Cong.– UND	61	25
Approve Biden	54	40
Disapprove Biden	72	22
Republican	71	24
Democrat	51	42
Independent	64	29
Liberal	55	39
Moderate	53	37
Conservative	75	21
White	63	31
African- American	53	38
Hispanic	66	29
Under 55	66	29
Over 55	56	36
Married	65	30
Single	67	29
Men	64	32
Women	60	31
Live in Urban Area	68	26
Live in Suburban Area	56	38
Live in Rural Area	66	27

INDEPENDENTS ONLY: Thinking ahead to the 2024 primary election for President, in which party's primary are you more likely to vote – the Republican primary or the Democratic primary

	5/21	6/21	8/21
Republican	31	31	40
Democrat	33	35	36
Don't Vote	25	23	25



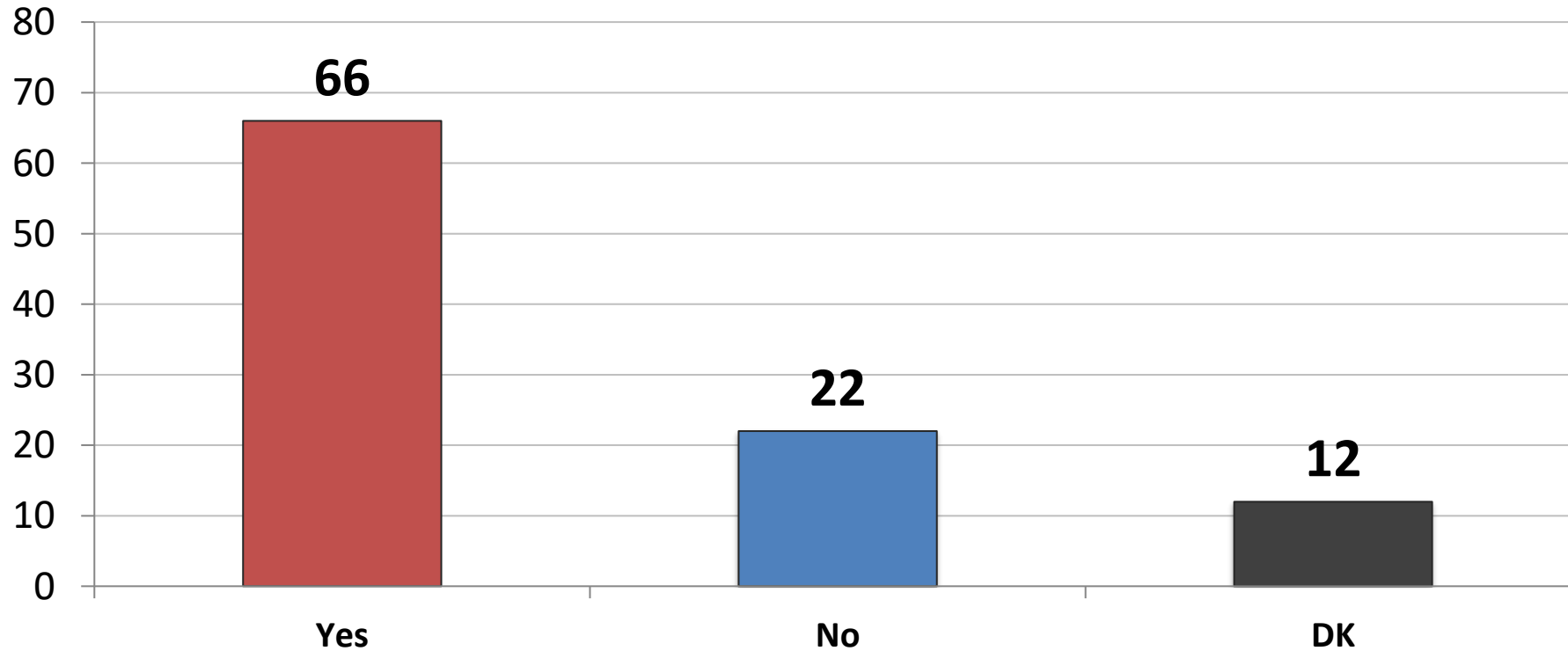
	GOP	DEM
East	29	39
Midwest	50	34
South	43	31
West	36	43
Vote Trump 2020	67	10
Vote Biden 2020	14	61
Vote Cong. – GOP	72	10
Vote Cong. – DEM	2	79
Vote Cong.– UND	31	22
Approve Biden	15	60
Disapprove Biden	68	10
Republican	-	-
Democrat	-	-
Independent	40	36
Liberal	8	74
Moderate	35	38
Conservative	68	10
White	44	32
African- American	37	32
Hispanic	35	46
Under 55	36	39
Over 55	46	30
Married	49	34
Single	29	45
Men	44	34
Women	36	38
Live in Urban Area	32	42
Live in Suburban Area	47	30
Live in Rural Area	31	43

**Thinking ahead to the 2024 Democratic primary election for President, if that election were held today among the following candidates, for whom would you vote?
(Democrat Primary Voters)**

(11/20: N=445) (12/20: N=443) (3/21: N=443) (4/21: N=458) (5/21: N=459) (6/21: N=463) (8/21: N=467)	11/20	12/20	3/21	4/21	5/21	6/21	8/21
Kamala Harris	29	25	28	34	35	31	28
Michelle Obama	23	29	23	20	16	19	16
Stacey Abrams	*	*	*	*	4	5	4
Alexandria Ocasio-Cortez	6	7	8	3	7	5	7
Pete Buttigieg	6	5	7	5	6	4	8
Andrew Yang	*	*	4	4	2	3	4
Amy Klobuchar	2	2	3	4	3	3	2
Beto O'Rourke	*	*	2	2	2	3	2
Cory Booker	2	3	4	4	4	3	5
John Hickenlooper	1	3	2	2	1	2	2
Kirsten Gillibrand	1	1	1	2	1	2	1
Andrew Cuomo	5	5	1	2	1	2	4
Deval Patrick	1	1	1	1	2	1	3
Gavin Newsom	*	*	0	2	2	1	2
Tim Kaine	1	2	1	1	2	1	1
Ilhan Omar	1	1	1	1	1	1	*
Undecided	23	18	14	12	13	16	13

Do you want to see Donald Trump run for President again in 2024? (Republican Primary Voters)

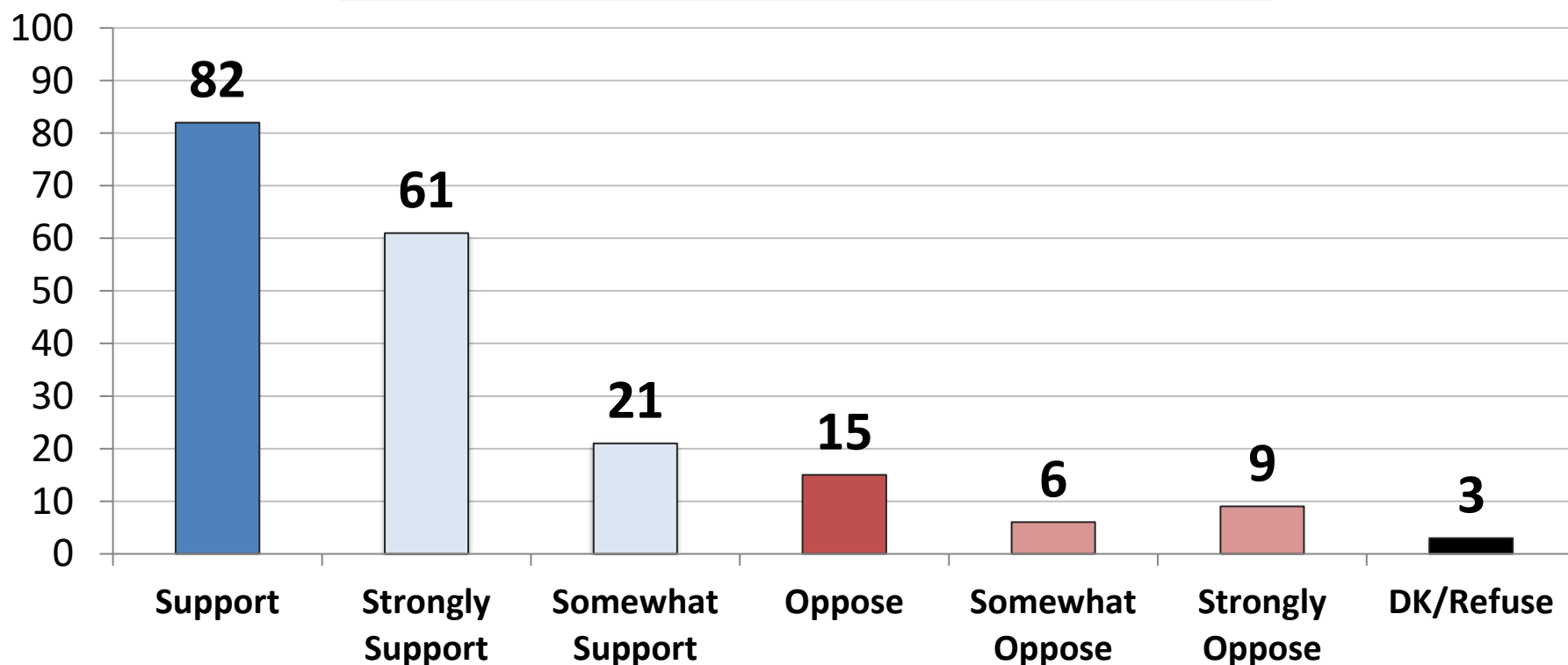
	3/21	4/21	5/21	6/21	8/21
Yes	72	69	73	72	66
No	20	22	17	19	22



	Yes	No
East	59	29
Midwest	68	22
South	68	23
West	66	18
Vote Trump 2020	72	15
Vote Biden 2020	16	83
Vote Cong. – GOP	69	20
Vote Cong. – DEM	18	66
Vote Cong. – UND	26	56
Approve Biden	39	57
Disapprove Biden	72	15
Republican	70	20
Democrat	-	-
Independent	54	32
Liberal	73	23
Moderate	56	36
Conservative	69	17
White	66	22
African- American	58	28
Hispanic	68	21
Under 55	67	24
Over 55	65	21
Married	67	22
Single	63	26
Men	63	26
Women	70	19
Live in Urban Area	70	22
Live in Suburban Area	62	25
Live in Rural Area	71	18

If Donald Trump ran for President again in 2024, would you support or oppose him for the Republican nomination? (Republican Primary Voters)

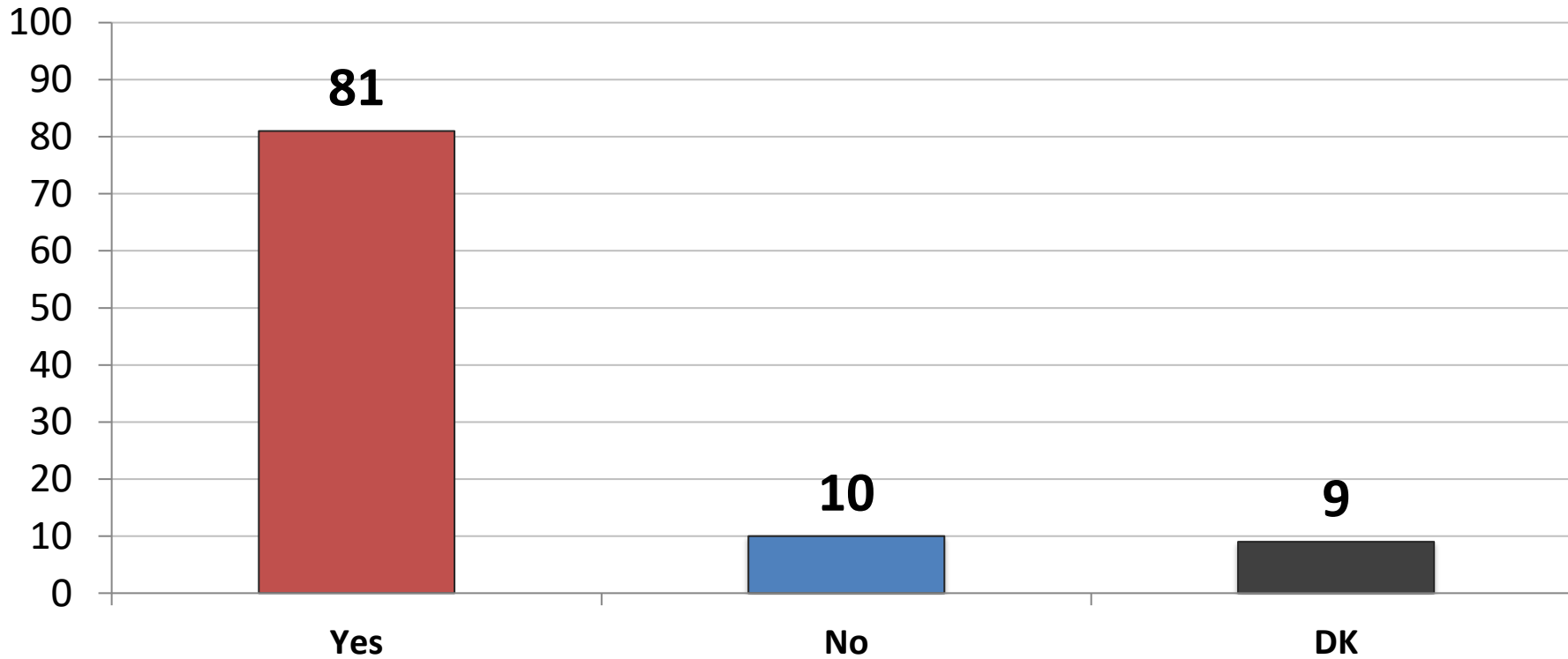
	3/21	4/21	5/21	6/21	8/21
Support	81	82	82	80	82
Oppose	15	15	13	16	15



	Support	Oppose
East	81	15
Midwest	78	16
South	82	16
West	87	10
Vote Trump 2020	88	9
Vote Biden 2020	30	65
Vote Cong. – GOP	85	12
Vote Cong. – DEM	34	66
Vote Cong. – UND	38	51
Approve Biden	54	43
Disapprove Biden	88	9
Republican	84	13
Democrat	-	-
Independent	73	22
Liberal	86	9
Moderate	68	28
Conservative	86	10
White	82	15
African- American	97	2
Hispanic	81	14
Under 55	81	14
Over 55	82	15
Married	83	13
Single	79	18
Men	80	17
Women	84	12
Live in Urban Area	79	17
Live in Suburban Area	83	15
Live in Rural Area	82	13

If Donald Trump won the Republican nomination for President, would you vote for him in the 2024 general election? (Republican Primary Voters)

	3/21	4/21	5/21	6/21	8/21
Yes	80	82	83	84	81
No	14	13	11	12	10



	Yes	No
East	80	7
Midwest	78	14
South	82	10
West	83	10
Vote Trump 2020	89	3
Vote Biden 2020	16	71
Vote Cong. – GOP	84	7
Vote Cong. – DEM	18	82
Vote Cong. – UND	44	51
Approve Biden	47	45
Disapprove Biden	88	4
Republican	84	8
Democrat	-	-
Independent	71	19
Liberal	72	22
Moderate	66	25
Conservative	87	4
White	81	9
African- American	65	24
Hispanic	80	15
Under 55	79	11
Over 55	83	9
Married	80	9
Single	79	14
Men	80	14
Women	82	6
Live in Urban Area	81	11
Live in Suburban Area	80	12
Live in Rural Area	82	7

**Thinking ahead to the 2024 Republican primary election for President, if that election were held today among the following candidates, for whom would you vote?
(Republican Primary Voters)**

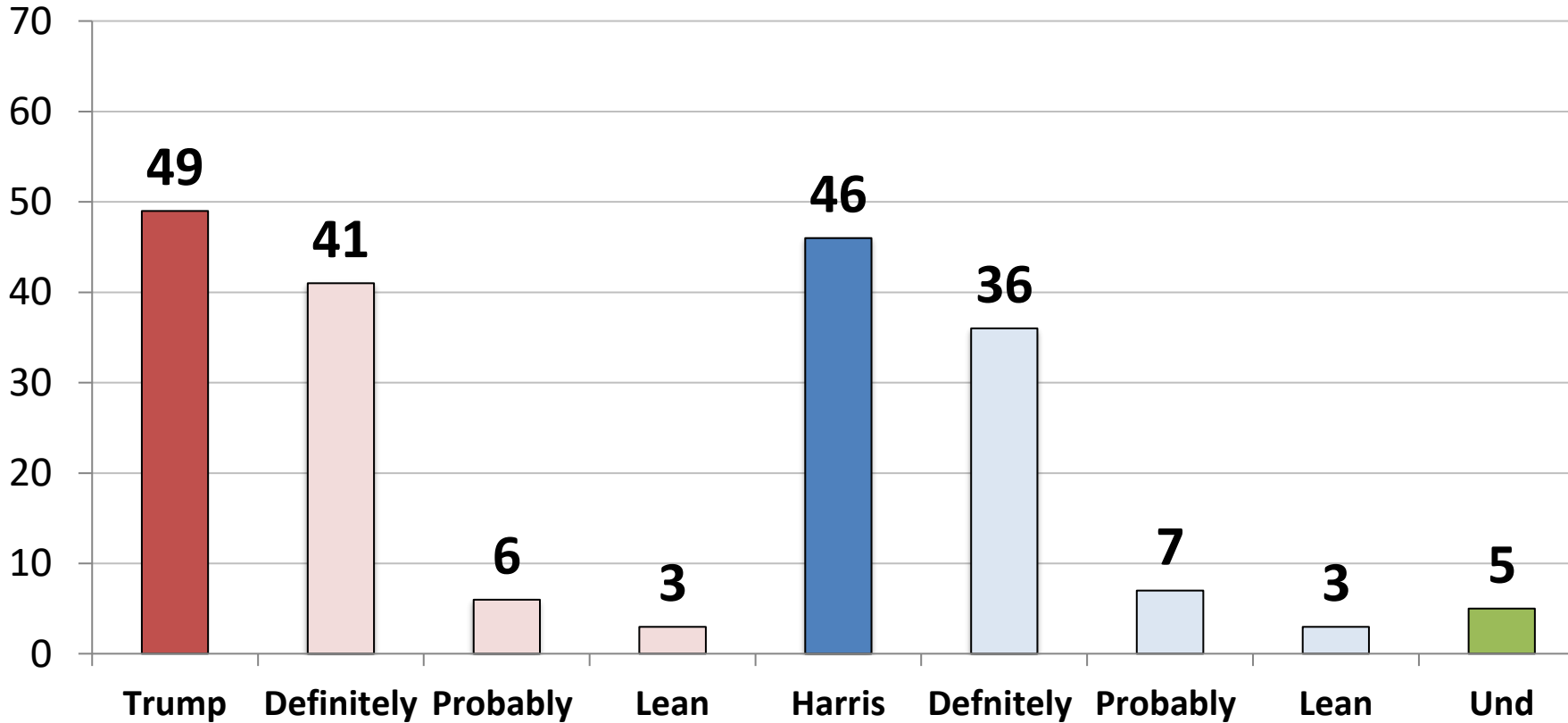
(11/20: N=442) (12/20: N=438) (3/21: N=448) (4/21: N=441) (5/21: N=444) (6/21: N=444) (8/21: N=467)	11/20	12/20	3/21	4/21	5/21	6/21	8/21
Donald Trump	53	56	55	55	57	55	54
Ron DeSantis	2	1	4	7	8	9	11
Mike Pence	9	11	8	10	10	8	8
Candace Owens	*	*	3	2	3	4	2
Ted Cruz	4	5	5	3	3	4	3
Nikki Haley	4	3	3	2	5	3	4
Mitt Romney	4	4	3	3	2	3	3
Marco Rubio	2	1	1	1	0	1	3
Tim Scott	1	1	1	1	1	1	0
John Kasich	3	2	2	3	1	1	2
Liz Cheney	*	*	*	*	1	1	1
Mike Pompeo	1	1	1	1	1	1	1
Tom Cotton	1	1	2	1	0	1	0
Rick Scott	1	0	0	1	1	1	0
Kristi Noem	1	2	1	0	1	0	2
Undecided	15	10	10	9	7	7	7

**Thinking ahead to the 2024 Republican primary election for President, if that election were held today among the following candidates, for whom would you vote?
(Republican Primary Voters)**

(11/20: N=442) (12/20: N=438) (3/21: N=448) (4/21: N=441) (5/21: N=444) (6/21: N=444) (8/21: N=467)	11/20	12/20	3/21	4/21	5/21	6/21	8/21
Ron DeSantis	2	2	9	14	18	24	23
Mike Pence	30	20	15	19	19	19	11
Donald Trump, JR	20	20	21	15	13	15	12
Ted Cruz	5	7	9	10	12	6	9
Mitt Romney	5	5	6	3	3	5	4
Nikki Haley	8	6	5	3	5	4	4
Ivanka Trump	*	4	3	3	3	4	5
Candace Owens	*	*	4	4	5	3	6
Liz Cheney	*	*	*	*	1	2	1
Marco Rubio	2	3	2	3	1	2	4
Kristi Noem	1	2	2	1	1	1	2
Mike Pompeo	*	1	2	2	2	1	2
Tim Scott	1	2	2	1	2	1	1
Tom Cotton	1	2	2	2	1	1	1
John Kasich	2	3	2	2	2	1	1
Rick Scott	1	0.4	1	1	0	1	0
Undecided	21	22	17	14	12	11	14

Now, if the 2024 Presidential election were held today, which one of the following best describes how you would vote in the general election for President between Donald Trump, the Republican candidate and Kamala Harris, the Democrat candidate, for whom would you vote?

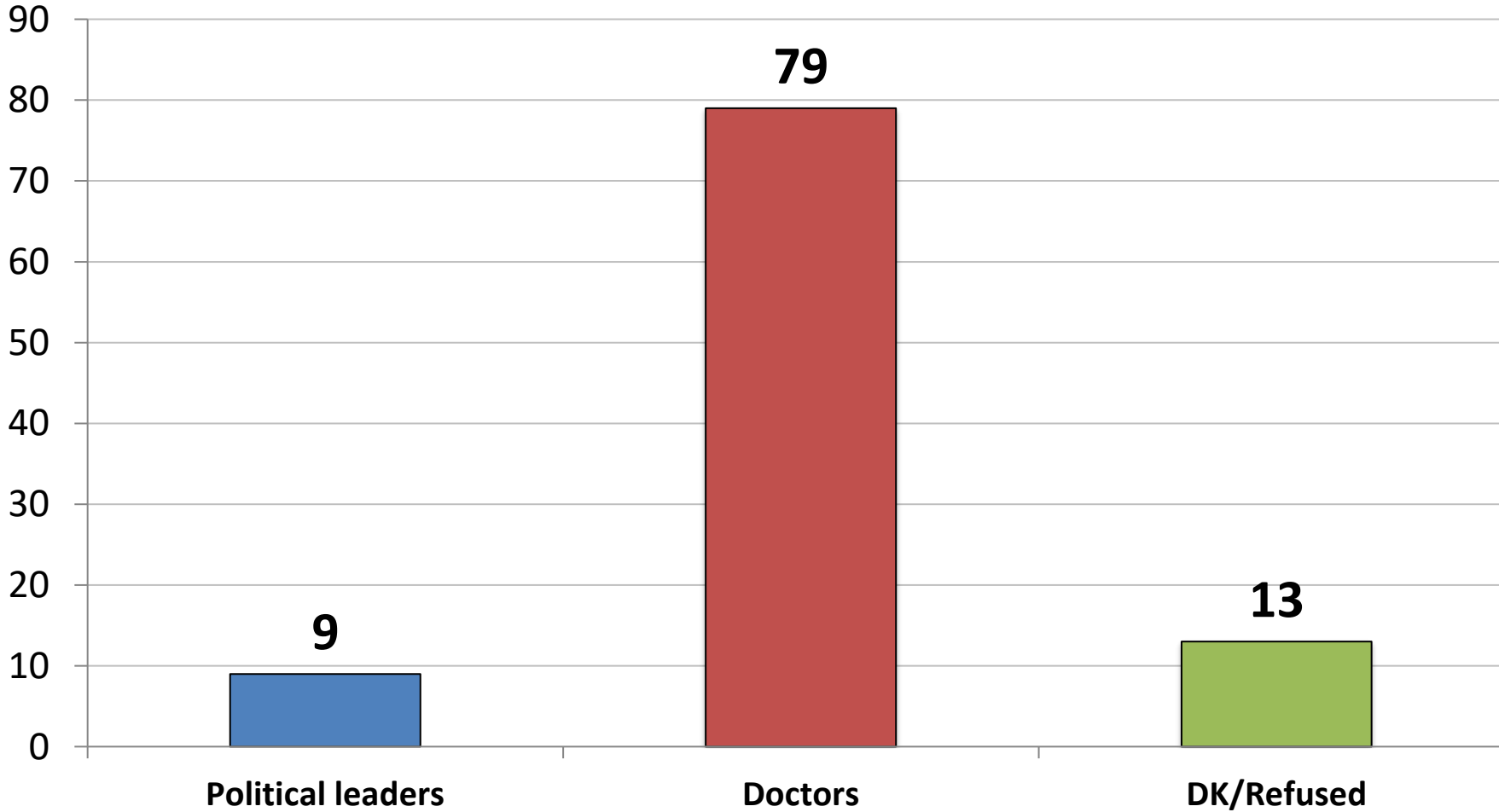
	5/21	6/21	8/21
Donald Trump	49	49	49
Kamala Harris	45	45	46



	Trump	Harris	Und.
East	38	57	5
Midwest	53	42	6
South	52	44	4
West	51	44	6
Vote Trump 2020	97	1	2
Vote Biden 2020	6	88	6
Vote Cong. – GOP	92	6	2
Vote Cong. – DEM	7	88	5
Vote Cong.– UND	38	40	22
Approve Biden	14	80	6
Disapprove Biden	92	6	3
Republican	93	5	2
Democrat	8	88	4
Independent	48	43	9
Liberal	14	82	4
Moderate	37	55	7
Conservative	88	9	3
White	57	39	4
African- American	16	76	7
Hispanic	48	49	3
Under 55	47	48	6
Over 55	52	44	4
Married	54	42	5
Single	43	51	6
Men	52	42	5
Women	46	49	4
Live in Urban Area	38	58	5
Live in Suburban Area	51	44	5
Live in Rural Area	62	33	5

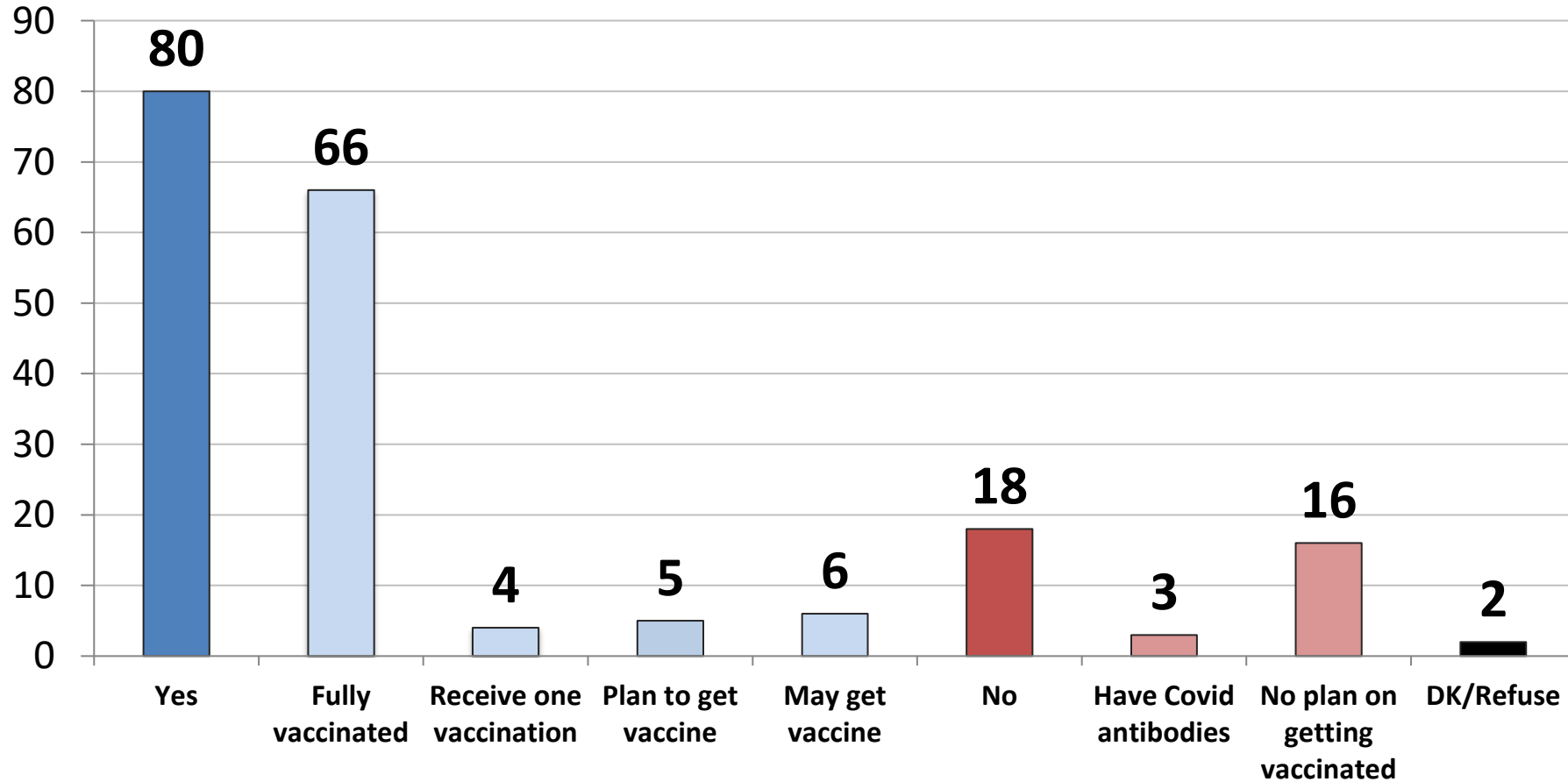
When it comes to facts and information about the Covid-19 virus and the vaccine, who do you trust more?

- 1. Political leaders and government officials *OR*,**
- 2. Your own doctor, physician and other local health care professionals**



	Poli.	Doc.
East	11	78
Midwest	5	81
South	10	76
West	8	80
Vote Trump 2020	5	76
Vote Biden 2020	11	81
Vote Cong. – GOP	7	76
Vote Cong. – DEM	11	82
Vote Cong.– UND	4	71
Approve Biden	14	79
Disapprove Biden	3	79
Republican	7	77
Democrat	13	80
Independent	5	79
Liberal	17	76
Moderate	5	82
Conservative	5	78
White	6	81
African- American	15	71
Hispanic	13	74
Under 55	13	73
Over 55	2	87
Married	11	79
Single	9	74
Men	11	78
Women	7	79
Live in Urban Area	15	73
Live in Suburban Area	6	83
Live in Rural Area	5	77

Which of the following comes closest to your own personal opinion regarding receiving the Covid-19 vaccination?

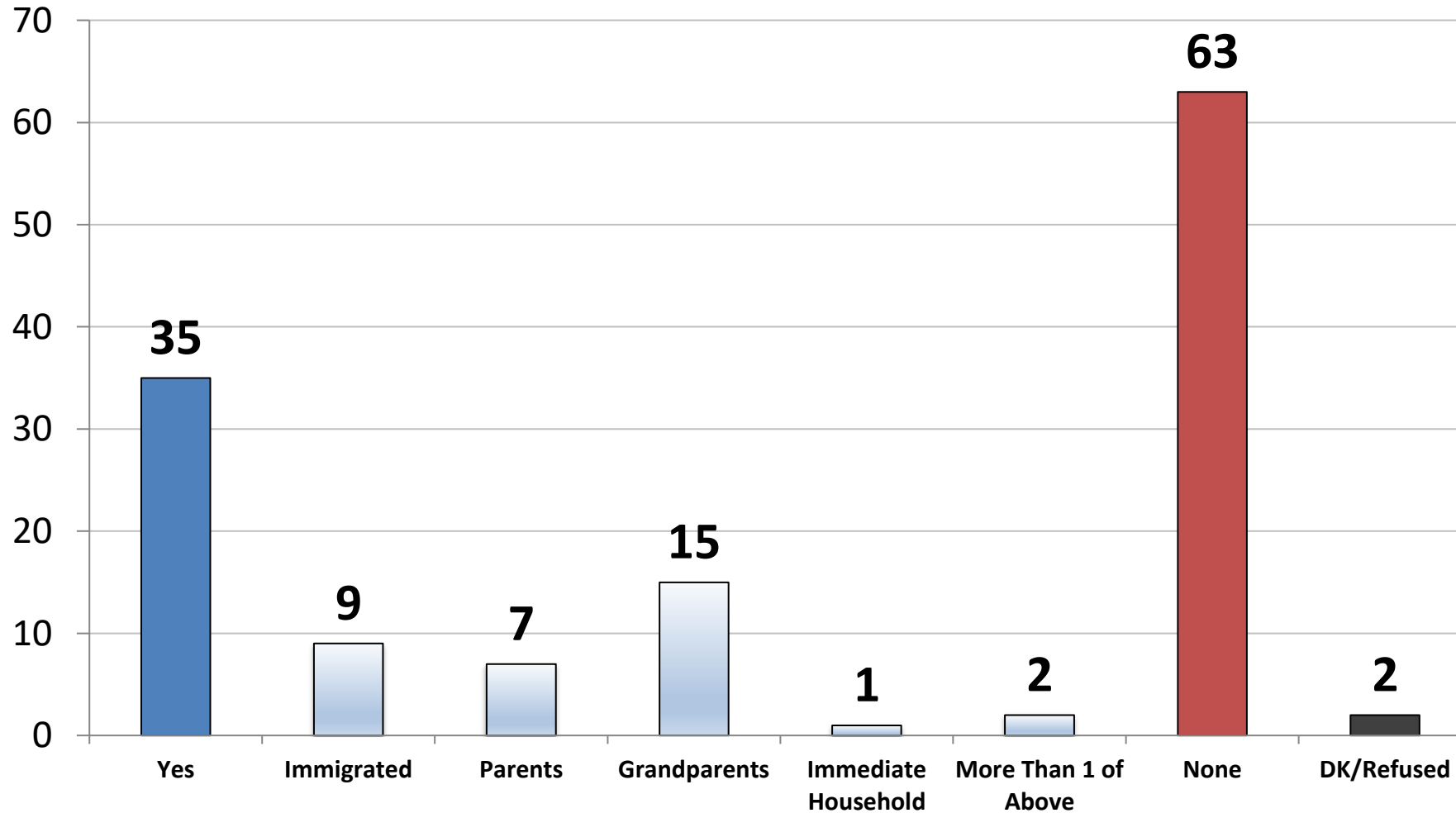


	Yes	No
East	91	9
Midwest	79	20
South	78	20
West	76	21
Vote Trump 2020	67	31
Vote Biden 2020	93	7
Vote Cong. – GOP	68	31
Vote Cong. – DEM	93	7
Vote Cong.– UND	85	11
Approve Biden	93	6
Disapprove Biden	66	32
Republican	69	30
Democrat	93	7
Independent	78	18
Liberal	94	6
Moderate	82	16
Conservative	69	30
White	79	20
African- American	80	18
Hispanic	85	14
Under 55	78	21
Over 55	84	15
Married	83	16
Single	79	20
Men	85	14
Women	76	22
Live in Urban Area	85	14
Live in Suburban Area	81	18
Live in Rural Area	72	26

From the following list, which social media networks do you use?

	<u>Total</u>	<u>Rep</u>	<u>Dem</u>	<u>Ind</u>	<u>Lib</u>	<u>Mod</u>	<u>Cons</u>	<u>Under 55</u>	<u>Over 55</u>	<u>Men</u>	<u>Women</u>
Facebook	75	74	78	75	76	76	75	75	76	71	80
YouTube	63	58	65	68	69	66	56	73	50	64	63
Instagram	45	35	54	44	56	44	36	56	29	42	47
Twitter	32	25	42	30	46	28	26	39	23	37	28
Pinterest	32	28	34	33	39	30	27	34	28	23	40
Linked-In	29	24	37	24	36	30	22	34	23	36	23
Snapchat	24	24	24	23	26	24	21	35	7	20	27
TikTok	23	20	25	23	29	25	16	33	8	19	26
WhatsApp	15	12	18	15	23	12	12	21	7	18	13
Reddit	13	12	13	15	18	13	9	18	7	15	11
Tumblr	7	5	8	8	13	4	5	10	3	8	6
Telegram	4	4	5	4	7	2	4	6	2	6	3
Parler	3	5	1	3	3	0	5	3	2	4	2
Rumble	3	4	1	4	3	0	5	4	2	4	2
GAB.com	2	3	1	3	3	*	4	3	1	3	1
CloutHub	1	1	1	1	2	*	1	1	1	2	1
Other	2	3	1	3	2	0	4	2	2	3	1
None	6	7	4	6	3	6	7	2	11	6	5

Are you, your parents or grandparents or someone in your immediate household an immigrant to the United States?



	Yes	None
East	46	49
Midwest	31	69
South	29	69
West	38	59
Vote Trump 2020	29	71
Vote Biden 2020	39	57
Vote Cong. – GOP	32	67
Vote Cong. – DEM	38	59
Vote Cong.– UND	27	66
Approve Biden	41	56
Disapprove Biden	28	71
Republican	30	70
Democrat	38	60
Independent	36	59
Liberal	50	48
Moderate	28	69
Conservative	28	71
White	31	68
African- American	21	76
Hispanic	57	40
Under 55	36	61
Over 55	33	67
Married	38	60
Single	33	64
Men	40	58
Women	29	68
Live in Urban Area	37	61
Live in Suburban Area	38	60
Live in Rural Area	23	74

Voter Profile: n= 1,000

	Total		Total		Total
Party:		Age:		Area:	
Republican	36	18-29	17	Urban	31
Democrat	37	30-40	16	Suburban	48
Ind./Other/D.K./Ref.	27	41-55	25	Rural	21
Ideology:		56-65	20	Region:	
Liberal	29	Over 65	22	New England	5
Moderate	33	Mean	49.2	Middle Atlantic	13
Conservative	37	Race:		East North Central	16
Education:		White	68	West North Central	7
H.S./Less Coll.	56	African American/Black	13	South Atlantic	22
Coll. Grad./Post.	44	Hispanic	13	East South Central	6
Gender:		Asian	4	West South Central	11
Male	48			Mountain	7
Female	52			Pacific	13



McLaughlin & Associates

New York Office

566 South Route 303

Blauvelt, NY 10913

845-365-2000

D.C./Virginia Office

919 Prince Street

Alexandria, VA 22314

703-518-4445

www.mclaughlinonline.com