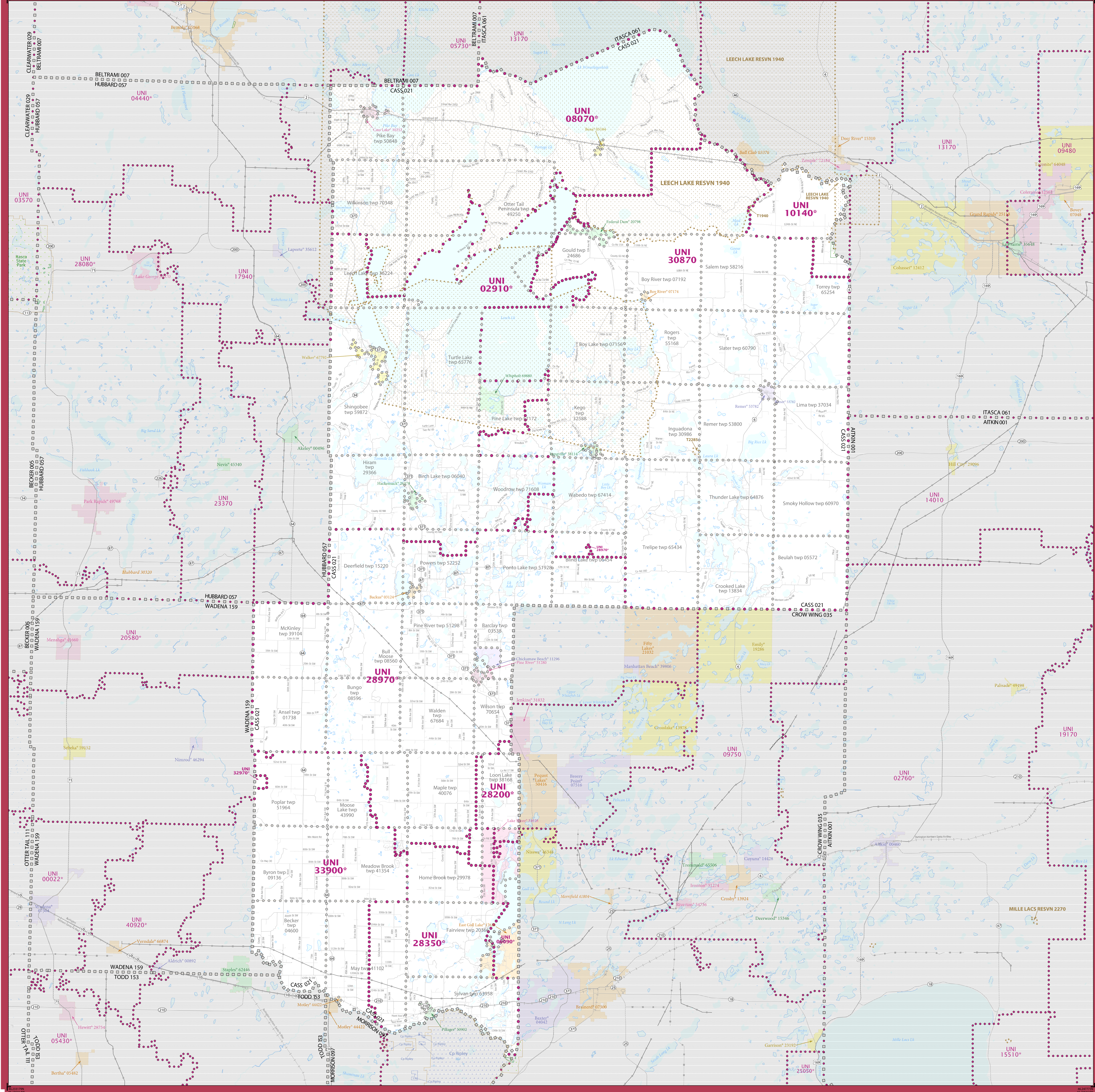


# 2020 CENSUS - SCHOOL DISTRICT REFERENCE MAP: Cass County, MN



### LEGEND

SYMBOL DESCRIPTION	SYMBOL	LABEL STYLE
International	☆☆☆☆☆	CANADA
Federal American Indian Reservation	[Dotted pattern]	L'ANSE RES 1880
Off-Reservation Trust Land	[Dotted pattern]	T1880
State American Indian Reservation	[Dotted pattern]	Tama Res 9400
Alaska Native Regional Corporation	+++++	NANA ANRC 52120
State (or statistically equivalent entity)	//////	NEW YORK 36
County (or statistically equivalent entity)	□□□□	ERIE 029
Minor Civil Division (MCD) <sup>1,2</sup>	○ ○ ○ ○ ○	Bristol town 07485
Consolidated City	○ ○ ○ ○ ○	MILFORD 47500
Incorporated Place <sup>3</sup>	■ ■ ■ ■ ■	Davis 18100
Census Designated Place (CDP) <sup>3</sup>	■ ■ ■ ■ ■	Incline Village 35100
Unified School District <sup>4</sup>	.....	UNI 03370 SEC 99965 ELM 02220
Secondary School District <sup>4</sup>	— — — — —	
Elementary School District <sup>4</sup>	— — — — —	

DESCRIPTION	SYMBOL	DESCRIPTION	SYMBOL
Interstate	[Blue line with red dots]	Water Body	[Blue wavy line]
U.S. Highway	[Black line with shield]	Military	[Blue line with 'M']
State Highway or State Road	[Black line with shield]	National or State Park, Forest, or Recreation Area	[Green line with 'N']
Other Road	[Black line]	Recreation Area	[Green line with 'R']
4WD Trail, Steeplechase, Alley, Walkway, or Ferry	[Dashed line]	Inset Area	[Green line with 'I']
Railroad	[Black line with cross-ticks]	Outside Subject Area	[Grey background]
Pipeline or Power Line	[Black line with cross-ticks]		
Ridge or Fence	[Black line with cross-ticks]		
Natural Boundary or Feature Not Elsewhere Classified	[Black line with cross-ticks]		

Where international, state, county, and/or MCD boundaries coincide, the map shows the boundary symbol for only the highest-ranking of these boundaries.  
Geographic area names are followed by either their FIPS or census code.

1 MCD boundaries are shown in the following states in which some or all MCDs function as general-purpose governmental units: Connecticut, Illinois, Indiana, Kansas, Maine, Massachusetts, Michigan, Minnesota, Missouri, Nebraska, New Hampshire, New Jersey, New York, North Dakota, Ohio, Pennsylvania, Rhode Island, South Dakota, Vermont, and Wisconsin. (Note that Illinois and Nebraska have some counties covered by nongovernmental precincts and Missouri has most counties covered by nongovernmental townships.)

2 A " " following an MCD name denotes a false MCD. A " " following a place name indicates that a false MCD exists with the same name and FIPS code as the place; the false MCD label is not shown.

3 Place label color corresponds to the place fill color.

4 A " " following a label indicates that the school district is in more than one county.

Due to space limitations, some areas and features such as water bodies, parks, and roads may not be labeled.

### OFF-RESERVATION TRUST LAND NAMES

11340 Leech Lake  
12285 Minnesota Chippewa

### SUBJECT AREA SCHOOL DISTRICTS ON MAP SHEET

TYPE	CODE	NAME
UNI	02910	Walker-Hackensack-Akeley School District
UNI	06090	Brainerd Public School District
UNI	06070	Cass Lake-Bena Public Schools
UNI	10140	Deer River Public School District
UNI	28200	Pineau Lakes Public Schools
UNI	28350	Pillager Public School District
UNI	28970	Pine River-Becker Public School District
UNI	30870	Northland Community Schools
UNI	32970	Selkirk Public School District
UNI	33900	Staples-Motley School District

All legal boundaries and names are as of January 1, 2020. The boundaries shown on this map are for Census Bureau statistical data collection and tabulation purposes only; their depiction and designation for statistical purposes does not constitute a determination of jurisdictional authority or rights of ownership or entitlement.

Geographic Vintage: 2020 Census (reference date: January 1, 2020)  
Data Source: U.S. Census Bureau's MAI/TIGER database (T4E20)  
Map Created by Geography Division: January 15, 2021

