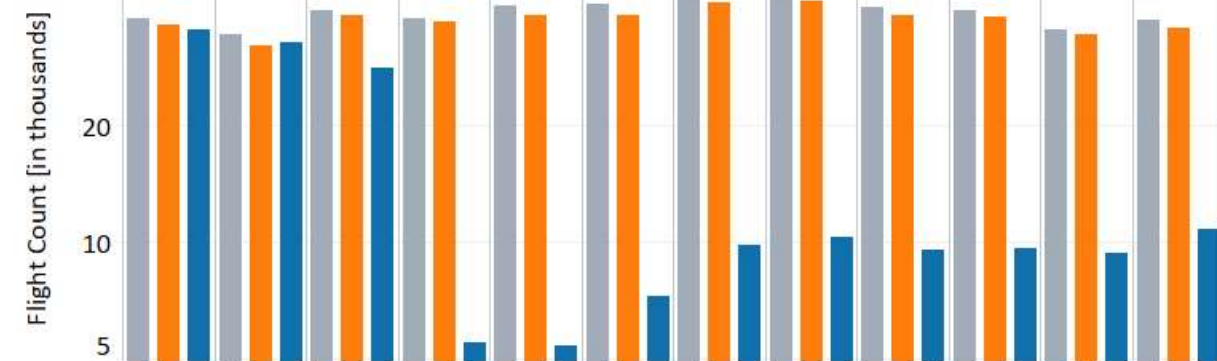
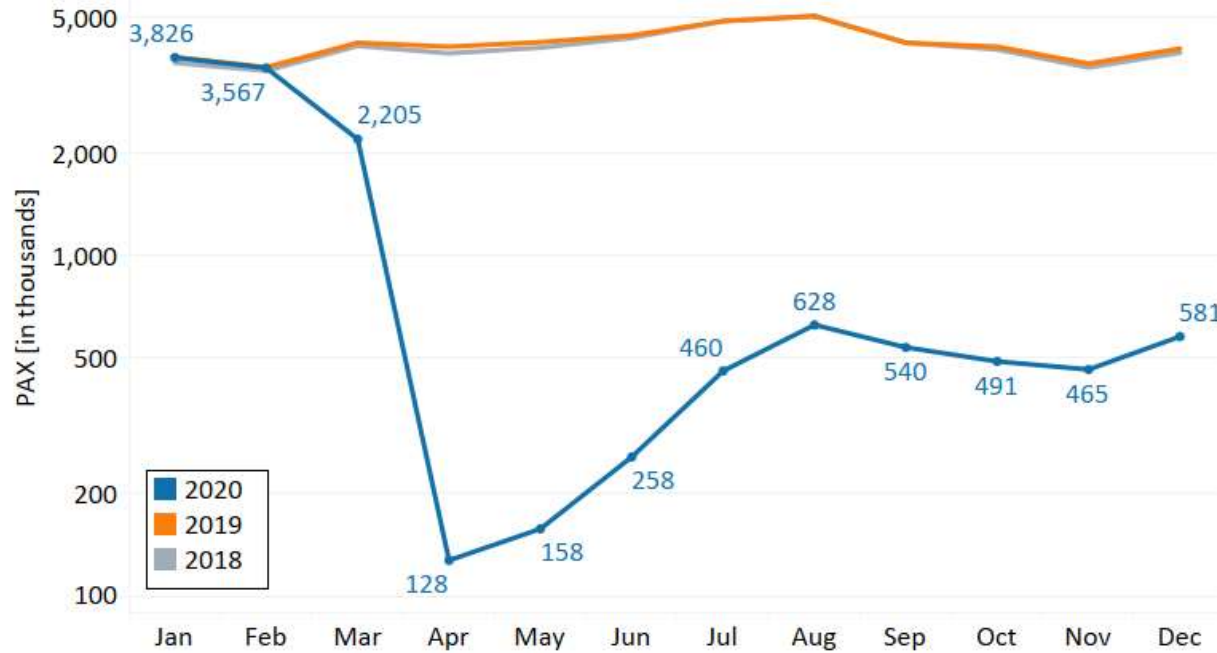


Toronto Pearson



Airport Traffic Summary



December

YTD

	2020	2019	YOY%	2020	2019	YOY%
Total	580,845	4,064,136	-85.71%	13,307,077	50,496,201	-73.65%
Domestic	289,528	1,423,261	-79.66%	5,449,924	18,405,722	-70.39%
International	210,895	1,512,053	-86.05%	4,824,571	18,250,123	-73.56%
Transborder	80,422	1,128,822	-92.88%	3,032,582	13,840,356	-78.09%
Total	10,906	35,886	-69.61%	174,635	453,114	-61.46%
Terminal	9,504	33,495	-71.63%	158,107	421,919	-62.53%
Non-Terminal	1,402	2,391	-41.36%	16,528	31,195	-47.02%

Note: Above data is preliminary and subject to subsequent adjustments as new information is obtained. Sector definitions are independent and subject to the Greater Toronto Airports Authority.

Passengers

	Q1				Q2				Q3				Q4				Total		
	January	February	March	Total	April	May	June	Total	July	August	September	Total	October	November	December	Total			
2020	Domestic	1,243,996	1,177,998	758,539	3,180,533	64,665	94,400	170,359	329,424	299,474	428,722	357,091	1,085,287	309,144	256,008	289,528	854,680	5,449,924	
		-2.71%	0.24%	-44.05%	-16.51%	-95.36%	-94.09%	-90.05%	-92.99%	-84.42%	-78.70%	-78.26%	-80.54%	-80.57%	-80.34%	-79.66%	-80.20%	-70.39%	
	International	1,542,493	1,359,628	866,811	3,768,932	49,495	52,711	63,367	165,573	119,046	148,858	136,045	403,949	128,855	146,367	210,895	486,117	4,824,571	
		1.43%	-0.95%	-45.81%	-16.12%	-96.74%	-96.45%	-95.94%	-96.37%	-93.16%	-91.70%	-90.89%	-91.97%	-90.58%	-88.60%	-86.05%	-88.32%	-73.56%	
	Transborder	1,039,459	1,029,562	579,656	2,648,677	13,841	11,268	23,802	48,911	41,753	50,859	46,661	139,273	52,885	62,414	80,422	195,721	3,032,582	
		0.05%	-0.63%	-54.54%	-20.94%	-98.85%	-99.03%	-97.97%	-98.62%	-96.61%	-95.94%	-95.72%	-96.11%	-95.44%	-94.26%	-92.88%	-94.20%	-78.09%	
	Total	3,825,948	3,567,188	2,205,006	9,598,142	128,001	158,379	257,528	543,908	460,273	628,439	539,797	1,628,509	490,884	464,789	580,845	1,536,518	13,307,077	
		-0.33%	-0.47%	-47.88%	-17.63%	-96.89%	-96.27%	-94.21%	-95.75%	-90.60%	-87.58%	-87.23%	-88.52%	-88.08%	-87.34%	-85.71%	-87.04%	-73.65%	
	2019	Domestic	1,278,673	1,175,188	1,355,711	3,809,572	1,394,430	1,596,740	1,711,466	4,702,636	1,921,815	2,012,355	1,642,757	5,576,927	1,591,006	1,302,320	1,423,261	4,316,587	18,405,722
			1.92%	-1.29%	-1.02%	-0.14%	1.14%	3.44%	1.73%	2.13%	0.91%	0.50%	1.30%	0.88%	2.08%	0.36%	2.10%	1.56%	1.14%
International		1,520,800	1,372,735	1,599,499	4,493,034	1,517,888	1,486,643	1,562,136	4,566,667	1,739,743	1,794,246	1,493,636	5,027,625	1,367,222	1,283,522	1,512,053	4,162,797	18,250,123	
		5.25%	5.69%	4.29%	5.04%	5.99%	4.95%	2.33%	4.38%	-1.13%	-0.72%	-2.02%	-1.25%	2.86%	7.57%	4.34%	4.82%	3.02%	
Transborder		1,038,950	1,036,096	1,275,059	3,350,105	1,206,022	1,161,758	1,171,312	3,539,092	1,233,187	1,253,227	1,090,590	3,577,004	1,158,509	1,086,824	1,128,822	3,374,155	13,840,356	
		4.80%	2.52%	3.03%	3.41%	6.93%	2.69%	0.82%	3.45%	0.28%	-0.83%	0.50%	-0.05%	0.66%	0.07%	1.75%	0.83%	1.87%	
Total		3,838,423	3,584,019	4,230,269	11,652,711	4,118,340	4,245,141	4,444,914	12,808,395	4,894,745	5,059,828	4,226,983	14,181,556	4,116,737	3,672,666	4,064,136	11,853,539	50,496,201	
		4.00%	2.40%	2.16%	2.83%	4.56%	3.76%	1.70%	3.29%	0.02%	-0.26%	-0.10%	-0.12%	1.93%	2.68%	2.83%	2.47%	2.01%	
2018		Domestic	1,254,609	1,190,595	1,369,677	3,814,881	1,378,684	1,543,589	1,682,289	4,604,562	1,904,542	2,002,247	1,621,749	5,528,538	1,558,652	1,297,620	1,393,941	4,250,213	18,198,194
			2.80%	4.76%	4.00%	3.84%	2.83%	4.22%	3.07%	3.38%	2.87%	1.34%	1.49%	1.91%	-0.07%	-0.16%	0.61%	0.12%	2.25%
	International	1,444,901	1,298,811	1,533,754	4,277,466	1,432,168	1,416,490	1,526,527	4,375,185	1,759,580	1,807,177	1,524,488	5,091,245	1,329,178	1,193,251	1,449,134	3,971,563	17,715,459	
		6.93%	9.12%	11.27%	9.12%	4.71%	8.88%	9.36%	7.64%	6.70%	7.79%	8.77%	7.70%	7.13%	8.69%	6.59%	7.40%	7.96%	
	Transborder	991,406	1,010,670	1,237,565	3,239,641	1,127,885	1,131,332	1,161,732	3,420,949	1,229,759	1,263,740	1,085,158	3,578,657	1,150,968	1,086,058	1,109,384	3,346,410	13,585,657	
		2.43%	7.82%	7.47%	5.98%	3.88%	8.24%	6.89%	6.31%	3.98%	4.17%	5.80%	4.59%	3.49%	5.77%	6.95%	5.36%	5.54%	
	Total	3,690,916	3,500,076	4,140,996	11,331,988	3,938,737	4,091,411	4,370,548	12,400,696	4,893,881	5,073,164	4,231,395	14,198,440	4,038,798	3,576,929	3,952,459	11,568,186	49,499,310	
		4.27%	7.23%	7.65%	6.40%	3.81%	6.90%	6.21%	5.66%	4.50%	4.27%	5.12%	4.60%	3.23%	4.45%	4.50%	4.04%	5.14%	

Movements

	Q1				Q2				Q3				Q4				Total	
	January	February	March	Total	April	May	June	Total	July	August	September	Total	October	November	December	Total		
2020	Terminal	33,210	30,589	25,771	89,570	5,005	4,757	6,144	15,906	8,697	9,107	8,573	26,377	8,572	8,178	9,504	26,254	158,107
		-2.97%	1.66%	-28.79%	-10.88%	-85.49%	-86.67%	-82.93%	-85.02%	-77.85%	-76.99%	-75.94%	-76.96%	-75.70%	-74.44%	-71.63%	-73.94%	-62.53%
	Non-Terminal	2,284	2,310	2,399	6,993	557	683	1,129	2,369	1,137	1,234	1,001	3,372	1,154	1,238	1,402	3,794	16,528
		2.28%	-0.04%	-0.83%	0.43%	-79.80%	-77.33%	-60.22%	-72.48%	-52.01%	-50.80%	-65.57%	-56.68%	-59.49%	-52.38%	-41.36%	-51.61%	-47.02%
Total	35,494	32,899	28,170	96,563	5,562	5,440	7,273	18,275	9,834	10,341	9,574	29,749	9,726	9,416	10,906	30,048	174,635	
	-2.64%	1.54%	-27.04%	-10.15%	-85.07%	-85.94%	-81.27%	-84.08%	-76.38%	-75.43%	-75.16%	-75.67%	-74.49%	-72.78%	-69.61%	-72.33%	-61.46%	
2019	Terminal	34,225	30,089	36,191	100,505	34,501	35,677	35,989	106,167	39,264	39,586	35,638	114,488	35,273	31,991	33,495	100,759	421,919
		-1.54%	-5.66%	-3.26%	-3.42%	-0.79%	-4.71%	-5.33%	-3.69%	-3.20%	-2.44%	-3.97%	-3.18%	-4.35%	-2.05%	-4.60%	-3.72%	-3.49%
	Non-Terminal	2,233	2,311	2,419	6,963	2,757	3,013	2,838	8,608	2,369	2,508	2,907	7,784	2,849	2,600	2,391	7,840	31,195
		-27.52%	-15.01%	8.82%	-13.21%	-13.41%	-10.65%	-16.75%	-13.62%	-23.03%	-20.05%	-12.18%	-18.28%	-6.93%	-8.09%	4.64%	-4.10%	-12.59%
Total	36,458	32,400	38,610	107,468	37,258	38,690	38,827	114,775	41,633	42,094	38,545	122,272	38,122	34,591	35,886	108,599	453,114	
	-3.65%	-6.40%	-2.59%	-4.12%	-1.85%	-5.20%	-6.27%	-4.51%	-4.60%	-3.71%	-4.64%	-4.31%	-4.55%	-2.53%	-4.03%	-3.74%	-4.18%	
2018	Terminal	34,760	31,895	37,412	104,067	34,776	37,441	38,015	110,232	40,563	40,577	37,111	118,251	36,878	32,661	35,109	104,648	437,198
		0.86%	3.67%	5.73%	3.43%	4.37%	6.05%	2.45%	4.26%	1.40%	1.30%	0.93%	1.22%	0.78%	-1.38%	0.73%	0.08%	2.21%
	Non-Terminal	3,081	2,719	2,223	8,023	3,184	3,372	3,409	9,965	3,078	3,137	3,310	9,525	3,061	2,829	2,285	8,175	35,688
		15.09%	-2.02%	-30.60%	-7.30%	20.29%	9.06%	-0.93%	8.55%	0.00%	-2.58%	-8.49%	-3.93%	-9.84%	-17.16%	-20.93%	-15.72%	-4.70%
Total	37,841	34,614	39,635	112,090	37,960	40,813	41,424	120,197	43,641	43,714	40,421	127,776	39,939	35,490	37,394	112,823	472,886	
	1.88%	3.20%	2.71%	2.58%	5.54%	6.29%	2.16%	4.60%	1.30%	1.01%	0.09%	0.82%	-0.12%	-2.85%	-0.93%	-1.26%	1.65%	