

Ibanez



**2021 FULL LINE
CATALOG**

Electric Guitars, Electric Bases, Acoustic Guitars,
Amplifiers, Effects & Accessories

Electric Guitars, Electric Bases, Acoustic Guitars, Amplifiers, Effects & Accessories 2021

Ibanez

Get Connected :   



www.ibanez.com
www.ibanezacoustic.com
©2021 Printed in Japan MAY211209 (JAPAN)

カタログ掲載の内容は品質向上のため予告なく変更する事があります。また商品写真は印刷の都合上、実際の色と異なって見える場合があります。尚、ギター及びベースは木製品のため、1本1本のコンディション(重量・木目等)が異なります。(価格は2021年7月1日現在のものです)

Ibanez
www.ibanez.com

Signature Models

ichika



Josh Smith
photo by Mackenzie Lenora



Lari Basilio
photo by Eduardo Oreilha



Martin Miller



Tom Quayle



Tim Henson
photo by Travis Poston



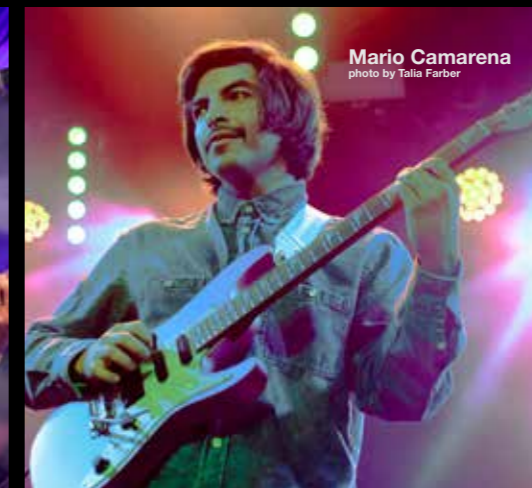
Scott LePage
photo by Travis Poston



Erick Hansel
photo by Mike Wyle



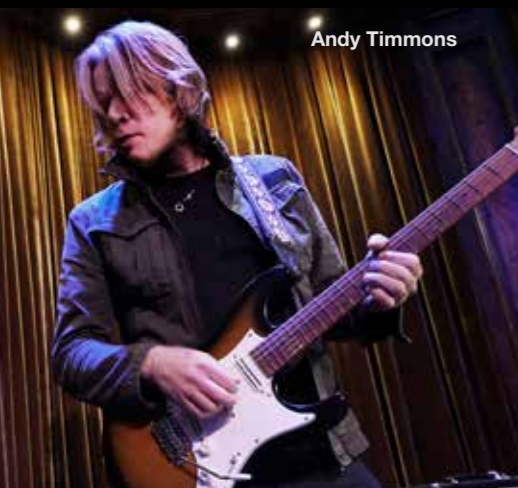
Mario Camarena
photo by Talia Farber



Yvette Young
photo by Connor Finster



Andy Timmons



Steve Vai
photo by Larry DiMarzio



Joe Satriani
photo by Joseph Cuttice
Album: What Happens Next



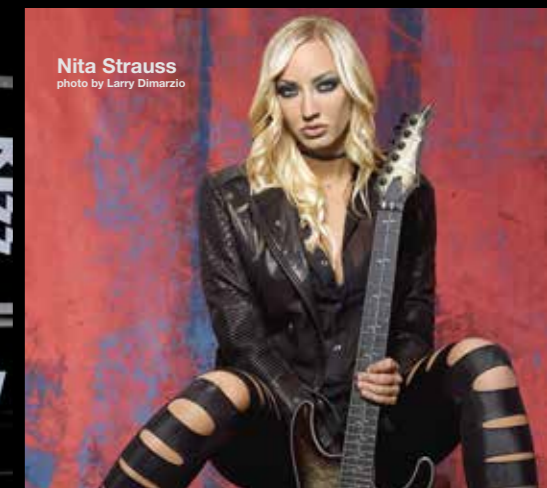
MR. BIG
Paul Gilbert
photo by Jason Quigley



Paul Stanley
photo by Brian Lowe



Nita Strauss
photo by Larry DiMarzio



Jake Bowen
photo by David J. Reigada



THE OFFSPRING
Noodles
photo by Kevin Estrada



MESHUGGAH
Mårten Hagström
photo by Mike Wyle



MESHUGGAH
Fredrik Thordendal
photo by Anthony Dubois



VERADETH
Kiko Loureiro
photo by Hristo Shindrov



KOHN
Munky
photo by Sebastian August



Signature Models

New Model ichika



VWM
(Vintage White Matte)

SPOT MODEL

¥146,520 (税抜価格 ¥133,200)

ICHI10

- Wizard C 3pc Roasted Maple/Bubinga neck
- Nyatoh body
- Roasted Birdseye Maple fretboard w/Mother of Pearl Step off-set dot inlay
- Jescar EVO Gold frets
- R1 (S) neck pickup
- R1 (S) middle pickup
- R1 (S) bridge pickup
- dyna-MIX8 switching system w/Alter Switch
- Ibanez Mono-Tune bridge
- Satin chrome hardware
- Ibanez Custom String Lock
- Luminescent side dot inlay
- Gig bag included

New Model Josh Smith



BK
(Black)

¥363,000 (税抜価格 ¥330,000)

FLATV1

MADE IN JAPAN

- FLATV S-TECH WOOD 1pc Roasted Maple neck
- Ash body
- S-TECH WOOD Roasted Maple fretboard w/Black dot inlay
- Medium frets w/Prestige fret edge treatment
- Bone nut
- Seymour Duncan® FLAT5™ (S) neck pickup
- Seymour Duncan® FLAT5™ (S) bridge pickup
- Gotoh® F1803 bridge
- Chrome hardware
- Luminlay side dots
- Hardshell case included

New Model Lari Basilio



VL
(Violet)

¥396,000 (税抜価格 ¥360,000)

LB1

MADE IN JAPAN

- AZ Oval C S-TECH WOOD 1pc Roasted Birdseye Maple neck
- Ash body
- S-TECH WOOD Roasted Birdseye Maple fretboard w/Mother of Pearl dot inlay
- Jumbo Stainless Steel frets w/Prestige fret edge treatment
- Bone nut
- Seymour Duncan® Lari Basilio (S) neck pickup
- Seymour Duncan® Lari Basilio (S) middle pickup
- Seymour Duncan® Lari Basilio (H) bridge pickup
- dyna-MIX9 switching system w/Alter Switch
- Gotoh® T1702B tremolo bridge
- Gold hardware
- Gotoh® Magnum Lock machine heads w/H.A.P.
- Luminlay side dots
- Hardshell case included

Martin Miller



TAB
(Transparent Aqua Blue)

¥385,000 (税抜価格 ¥350,000)

MM1

MADE IN JAPAN

- AZ Oval C S-TECH WOOD 1pc Roasted Maple neck
- AAA Flamed Maple (4mm) top/African Mahogany body
- S-TECH WOOD Roasted Maple fretboard w/Abalone dot inlay
- Jumbo Stainless Steel frets w/Prestige fret edge treatment
- Bone nut
- Seymour Duncan® Hyperion™ (H) neck pickup
- Seymour Duncan® Hyperion™ (H) bridge pickup
- dyna-MIX10 switching system w/Alter Switch
- Gotoh® T1802 tremolo bridge
- Chrome hardware
- Gotoh® Magnum Lock machine heads w/H.A.P.
- Luminlay side dots
- Hardshell case included

New Model Martin Miller 7-STRING



TAB
(Transparent Aqua Blue)

¥407,000 (税抜価格 ¥370,000)

MM7

MADE IN JAPAN

- AZ7 Oval C S-TECH WOOD 1pc Roasted Maple neck
- AAA Flamed Maple (4mm) top/African Mahogany body
- S-TECH WOOD Roasted Maple fretboard w/Abalone dot inlay
- Jumbo Stainless Steel frets w/Prestige fret edge treatment
- Graph Tech® BLACK TUSQ XL® nut
- Seymour Duncan® Hyperion™7 (H) neck pickup
- Seymour Duncan® Hyperion™7 (H) bridge pickup
- dyna-MIX10 switching system w/Alter Switch
- Gotoh® T1872S tremolo bridge
- Chrome hardware
- Gotoh® MG-T locking machine heads
- Luminlay side dots
- Hardshell case included

Tom Quayle



NT
(Natural)

¥385,000 (税抜価格 ¥350,000)

TQM1

MADE IN JAPAN

- AZ Oval C S-TECH WOOD 1pc Roasted Maple neck
- Monkeypod (4mm) top/Alder body
- S-TECH WOOD Roasted Maple fretboard w/Abalone dot inlay
- Jumbo Stainless Steel frets w/Prestige fret edge treatment
- Bone nut
- Seymour Duncan® Hyperion™ (S) neck pickup
- Seymour Duncan® Hyperion™ (S) middle pickup
- Seymour Duncan® Hyperion™ (H) bridge pickup
- dyna-MIX9 switching system w/Alter Switch
- Gotoh® T1802 tremolo bridge
- Chrome hardware
- Gotoh® Magnum Lock machine heads w/H.A.P.
- Luminlay side dots
- Hardshell case included

Tim Henson (Polyphia)



¥220,000 (税抜価格 ¥200,000)

Premium

THBB10

- AZ Oval C Roasted Maple neck
- American Basswood body
- Roasted Maple fretboard w/Acrylic & Abalone block inlay
- Jumbo Stainless Steel frets
- Graph Tech® nut
- DiMarzio® Notorious™ (S) neck pickup
- DiMarzio® Notorious™ (S) middle pickup
- DiMarzio® Notorious™ Minibucker (H) bridge pickup
- Gotoh® T1502 tremolo bridge
- Gold hardware
- Gotoh® MG-T locking machine heads
- Luminescent side dot inlay
- Gig bag included

Scott LePage (Polyphia)



¥220,000 (税抜価格 ¥200,000)

*Premium*TRM
(Transparent Red Matte)

SLM10

- AZ Oval C Roasted Maple neck
- Quilted Maple top/American Basswood body
- Roasted Maple fretboard w/White dot inlay
- Jumbo Stainless Steel frets
- Graph Tech® nut
- DiMarzio® True Velvet™ (S) neck pickup
- DiMarzio® True Velvet™ (S) middle pickup
- DiMarzio® IGNO™ (H) bridge pickup
- Gotoh® T1502 tremolo bridge
- Gold hardware
- Gotoh® MG-T locking machine heads
- Luminescent side dot inlay
- Gig bag included

Erick Hansel (Chon)



¥220,000 (税抜価格 ¥200,000)

*Premium*TGM
(Transparent Green Matte)

EH10

- AZ Oval C Roasted Maple neck
- Walnut top/Nyatoh body
- Jatoba fretboard w/Off-set white block inlay
- Jumbo Stainless Steel frets
- Graph Tech® nut
- Seymour Duncan® Alnico II Pro™ (S) neck pickup
- Seymour Duncan® Hyperion™ (H) bridge pickup
- Coil-tap switch
- Gotoh® T1502 tremolo bridge
- Chrome hardware
- Gotoh® MG-T locking machine heads
- Luminescent side dot inlay
- Gig bag included

Mario Camarena (Chon)



¥220,000 (税抜価格 ¥200,000)

*Premium*LMM
(Lavender Metallic Matte)

MAR10

- AZ Oval C Roasted Maple neck
- American Basswood body
- Roasted Maple fretboard w/Sharktooth inlay
- Jumbo Stainless Steel frets
- Graph Tech® nut
- Seymour Duncan® Hyperion™ (S) neck pickup
- Seymour Duncan® Hyperion™ (S) middle pickup
- Seymour Duncan® Hyperion™ (H) bridge pickup
- dyna-MIX9 switching system w/Alter Switch
- Gotoh® T1502 tremolo bridge
- Chrome hardware
- Gotoh® MG-T locking machine heads
- Luminescent side dot inlay
- Gig bag included

New Model Yvette Young (Covet)



¥176,000 (税抜価格 ¥160,000)

SGS
(Slime Green Sparkle)
SPOT MODEL

YY10

- YY Maple neck
- Alder body
- Maple fretboard w/Black dot inlay
- Medium frets
- Bone nut
- Seymour Duncan® Five Two™ (S) neck pickup
- Seymour Duncan® Five Two™ (S) middle pickup
- Seymour Duncan® Five Two™ (S) bridge pickup
- Wilkinson® WV6-SB bridge
- Chrome hardware
- Gotoh® MG-T locking machine heads
- Factory Tuning: 1E,2B,3G,4C,5A,6F
- String Gauge: .011/.014/.018/.030/.042/.052
- Luminescent side dot inlay
- Hardshell case included

Andy Timmons



¥341,000 (税抜価格 ¥310,000)

SB
(Sunburst)

AT100CL

MADE IN JAPAN

- AT Maple neck
- Alder body
- Maple fretboard w/Black dot inlay
- Jumbo frets
- Bone nut
- DiMarzio® The Cruiser® (H) neck pickup
- DiMarzio® The Cruiser® (H) middle pickup
- DiMarzio® AT-1™ (H) bridge pickup
- Wilkinson®-Gotoh® VSVG tremolo bridge
- Chrome hardware
- Gotoh® Magnum Lock machine heads w/H.A.P.
- Hardshell case included

Andy Timmons



¥385,000 (税抜価格 ¥350,000)

SBT
(Sunburst Flat)

ATZ100

MADE IN JAPAN

- ATZ S-TECH WOOD 1pc Roasted Maple neck
- Alder body
- S-TECH WOOD Roasted Maple fretboard w/Black dot inlay
- Jumbo Stainless Steel frets w/Prestige fret edge treatment
- Bone nut
- DiMarzio® The Cruiser® (H) neck pickup
- DiMarzio® The Cruiser® (H) middle pickup
- DiMarzio® The Cruiser® (H) bridge pickup
- Wilkinson®-Gotoh® VSVG tremolo bridge
- Chrome hardware
- Gotoh® Magnum Lock machine heads w/H.A.P.
- Luminlay side dots
- Hardshell case included

Steve Vai



SLW
(Stallion White)

XB
(Onyx Black)

NEW FINISH

¥506,000 (税抜価格 ¥460,000)

PIA3761

MADE IN JAPAN

- PIA 5pc Maple/Walnut neck
- Alder body
- Rosewood fretboard w/PIA Blossom inlay
- Jumbo Stainless Steel frets w/Prestige fret edge treatment
- DiMarzio® UtoPIA™ (H) neck pickup
- DiMarzio® UtoPIA™ (S) middle pickup
- DiMarzio® UtoPIA™ (H) bridge pickup
- Edge tremolo bridge
- Gold hardware
- Ultralite Tremolo Arm® included
- Luminlay side dots
- Hardshell case included

Steve Vai



Premium

BFP
(Blue Floral Pattern)

¥231,000 (税抜価格 ¥210,000)

JEM77P

- Wizard 5pc Maple/Walnut neck w/KTS™ TITANIUM rods
- American Basswood body
- Maple fretboard w/Tree of Life inlay
- Jumbo frets w/Premium fret edge treatment
- DiMarzio® Gravity Storm™ (H) neck pickup
- DiMarzio® Evolution® (S) middle pickup
- DiMarzio® Gravity Storm™ (H) bridge pickup
- Edge-Zero II tremolo bridge
- Cosmo black hardware
- Gig bag included

Steve Vai 7-STRING



Premium

BK
(Black)

¥209,000 (税抜価格 ¥190,000)

UV70P

- Wizard-7 5pc Maple/Walnut neck w/KTS™ TITANIUM rods
- American Basswood body
- Rosewood fretboard w/Green dot inlay
- Jumbo frets w/Premium fret edge treatment
- DiMarzio® Blaze™ (H) neck pickup
- DiMarzio® Blaze™ (S) middle pickup
- DiMarzio® Blaze™ (H) bridge pickup
- Edge-Zero II-7 tremolo bridge
- Cosmo black hardware
- Gig bag included

Joe Satriani



受注生産品 ¥825,000 (税抜価格 ¥750,000)

JS1CR

MADE IN JAPAN

- JS 3pc Maple/Bubinga neck
- Alder body
- Rosewood fretboard w/Mother of Pearl dot inlay
- Medium frets w/Prestige fret edge treatment
- SUSTAINIAC® Driver neck pickup
- DiMarzio® Satchur8™ (H) bridge pickup
- Hi-pass filter on volume control (push/pull)
- Sustainiac switch on tone control (push/pull)
- 3-way mode switch for Sustainiac
- Edge tremolo bridge
- Chrome hardware
- Ultralite Tremolo Arm® included
- Hardshell case included

New Model Joe Satriani



SYB
(Sky Blue)

¥346,500 (税抜価格 ¥315,000)

JS2410

MADE IN JAPAN

- JS 3pc Maple/Bubinga neck
- Alder body
- Rosewood fretboard w/Mother of Pearl dot inlay
- Medium frets w/Prestige fret edge treatment
- DiMarzio® Satch Track™ (H) neck pickup
- DiMarzio® Mo' Joe™ (H) bridge pickup
- Hi-pass filter on volume control (push/pull)
- Coil-tap switch on tone control (push/pull)
- Edge tremolo bridge
- Chrome hardware
- Ultralite Tremolo Arm® included
- Hardshell case included

Joe Satriani



MCP
(Muscle Car Purple)

¥346,500 (税抜価格 ¥315,000)

JS2450

MADE IN JAPAN

- JS 3pc Maple/Bubinga neck
- Alder body
- Rosewood fretboard w/Mother of Pearl dot inlay
- Medium frets w/Prestige fret edge treatment
- DiMarzio® Satch Track™ (H) neck pickup
- DiMarzio® Mo' Joe™ (H) bridge pickup
- Hi-pass filter on volume control (push/pull)
- Coil-tap switch on tone control (push/pull)
- Edge tremolo bridge
- Chrome hardware
- Ultralite Tremolo Arm® included
- Hardshell case included

Joe Satriani



MCR
(Muscle Car Red)

¥385,000 (税抜価格 ¥350,000)

JS2480

MADE IN JAPAN

- JS 3pc Maple/Bubinga neck
- Basswood body
- Rosewood fretboard w/Mother of Pearl dot inlay
- Medium frets w/Prestige fret edge treatment
- SUSTAINIAC® Driver neck pickup
- DiMarzio® Satchur8™ (H) bridge pickup
- Hi-pass filter on volume control (push/pull)
- Sustainiac switch on tone control (push/pull)
- 3-way mini switch for Sustainiac
- Edge tremolo bridge
- Chrome hardware
- Ultralite Tremolo Arm® included
- Hardshell case included

Joe Satriani



CA
(Candy Apple)

¥236,500 (税抜価格 ¥215,000)

JS240PS

- JS 3pc Maple/Bubinga neck w/KTS™ TITANIUM rods
- American Basswood body
- Rosewood fretboard w/White dot inlay
- Medium frets w/Premium fret edge treatment
- SUSTAINIAC® Driver neck pickup
- DiMarzio® Satchur8™ (H) bridge pickup
- High-Pass filter on volume control (push/pull)
- Sustainiac switch on tone control (push/pull)
- 3-way mini switch for Sustainiac
- Edge tremolo bridge
- Chrome hardware
- Gig bag included

New Model Paul Gilbert (Mr. Big)

PR
(Purple)

¥198,000 (税抜価格 ¥180,000)

FRM300GB

- FRM 3pc Okoume/Maple set-in neck
- 22 frets
- Okoume body
- Bound Ebony fretboard w/White dot inlay
- Narrow & Tall frets
- Graph Tech® nut
- DiMarzio® PG-13™ (H) neck pickup
- DiMarzio® PG-13™ (H) middle pickup
- DiMarzio® PG-13™ (H) bridge pickup
- Gibraltar Performer bridge
- Quik Change III tailpiece
- Chrome hardware
- Gig bag included

Jake Bowen (Periphery) 7-STRING


受注生産品 ¥220,000 (税抜価格 ¥200,000)

JBM27

- Wizard II-7 3pc Maple/Bubinga neck
- 673mm/26.5" scale
- Maple top/Nyatoth body
- Bound Rosewood fretboard w/JBM special inlay on 12th fret
- Jumbo frets
- DiMarzio® Titan™-7(H) neck pickup
- DiMarzio® Titan™-7(H) bridge pickup
- Edge-Zero II-7 tremolo bridge
- Black (Gold machine heads) hardware
- Gotoh® MG-T locking machine heads in gold
- Factory Tuning: 1D#,2A#,3F#,4C#,5G#,6D#,7G#
- String Gauge: .011/.014/.018/.030/.042/.052/.064

Paul Gilbert (Mr. Big)

WH
(White)

¥40,700 (税抜価格 ¥37,000)

PGMM31

- PGMM Maple neck
- 564mm/22.2" scale
- Poplar body
- Maple fretboard w/Black dot inlay
- Medium frets
- Infinity R (H) neck pickup
- Infinity R (H) bridge pickup
- F106 bridge
- Black hardware

Noodles (The Offspring)

SB
(Sunburst)
受注生産品 ¥143,000 (税抜価格 ¥130,000)

NDM5

- NDM 3pc Maple neck
- Basswood body
- Ebony fretboard w/White dot inlay
- Medium frets
- Seymour Duncan® P90 Stack® (H) neck pickup
- Seymour Duncan® P90 Stack® (H) bridge pickup
- F106 bridge
- Chrome hardware

Paul Stanley (KISS)

BK
(Black)
受注生産品 ¥440,000 (税抜価格 ¥400,000)

PS10

MADE IN JAPAN

- PS 3pc Maple set-in neck
- Maple top/African Mahogany body
- Bound Ebony fretboard w/Acrylic & Abalone block inlay
- Medium frets w/Prestige fret edge treatment
- Half-Bone/Half-Brass nut
- Seymour Duncan® '59 model (H) neck pickup
- Seymour Duncan® Custom 5™ (H) bridge pickup
- Gotoh® GE103B-T bridge
- Gotoh® GE101Z-T tailpiece
- Chrome hardware
- Hardshell case included

Mårten Hagström/Fredrik Thordendal (Meshuggah) 8-STRING


受注生産品 ¥825,000 (税抜価格 ¥750,000)

M8M

MADE IN JAPAN

- M8M 5pc Maple/Jatoba neck-through
- 747mm/29.4" scale
- Alder wing body
- Pau Rosa fretboard
- Jumbo frets w/Prestige fret edge treatment
- Lundgren Model M8 (H) bridge pickup
- FX Edge III-8 bridge
- Black hardware
- Hipshot machine heads
- Factory Tuning: 1D#,2A#,3F#,4C#,5G#,6D#,7A#,8F
- String Gauge: .009/.011/.016/.026/.036/.046/.052/.070
- Hardshell case included

Nita Strauss

DSB
(Deep Space Blonde)
受注生産品 ¥242,000 (税抜価格 ¥220,000)

JIVA10

- JIVA 3pc Maple/Purpleheart neck
- Quilted Maple top/African Mahogany body
- Bound Ebony fretboard w/Beaten Path inlay
- Jumbo frets
- DiMarzio® Pandemonium™ (H) neck pickup
- DiMarzio® True Velvet™ (S) middle pickup
- DiMarzio® Pandemonium™ (H) bridge pickup
- Edge-Zero II tremolo bridge
- Cosmo black hardware
- Luminescent side dot inlay

Fredrik Thordendal (Meshuggah) 8-STRING

WK
(Weathered Black)
受注生産品 ¥319,000 (税抜価格 ¥290,000)

FTM33

- FTM 7pc Maple/Walnut neck-through w/KTS™ TITANIUM rods
- 686mm/27" scale
- Ash wing body
- Rosewood fretboard
- Jumbo frets
- Lundgren Model M8P (H) neck pickup
- Lundgren Model M8P (H) bridge pickup
- FX Edge III-8 bridge
- Black hardware
- Factory Tuning: 1D#,2A#,3F#,4C#,5G#,6D#,7A#,8F
- String Gauge: .009/.011/.016/.026/.036/.046/.054/.074
- Luminescent side dot inlay
- Case included

j.custom



j. custom

GE
(Green Emerald)

SPB
(Sapphire Blue)

¥385,000 (税抜価格 ¥350,000)

RG8520

MADE IN JAPAN

- RG j.custom Super Wizard 5pc Maple/Wenge neck
- AAA Flamed Maple (4mm) top/African Mahogany body
- Bound Macassar Ebony fretboard w/Tree of Life inlay
- Jumbo frets w/j.custom fret edge treatment
- DiMarzio® Air Norton™ (H) neck pickup
- DiMarzio® The Tone Zone® (H) bridge pickup
- Lo-Pro Edge tremolo bridge
- Cosmo black hardware
- Gotoh® Strap lock pins
- Hardshell case included



j. custom

BSR
(Brownish Sphalerite)

SPB
(Sapphire Blue)

¥385,000 (税抜価格 ¥350,000)

RG8560

MADE IN JAPAN

- RG j.custom Super Wizard 5pc Maple/Wenge neck
- AAA Flamed Maple (4mm) top/African Mahogany body
- Bound Macassar Ebony fretboard w/Tree of Life inlay
- Jumbo frets w/j.custom fret edge treatment
- DiMarzio® Black Velvet™ (S) neck pickup
- DiMarzio® Black Velvet™ (S) middle pickup
- DiMarzio® Black Velvet™ (H) bridge pickup
- Lo-Pro Edge tremolo bridge
- Cosmo black hardware
- Gotoh® Strap lock pins
- Hardshell case included



j. custom

RBS
(Royal Blue Sapphire)

¥385,000 (税抜価格 ¥350,000)

RG8420ZD

MADE IN JAPAN

- RG j.custom Super Wizard 5pc Maple/Wenge neck
- AAA Flamed Maple (4mm) top/African Mahogany body
- Bound Macassar Ebony fretboard w/Tree of Life inlay
- Jumbo frets w/j.custom fret edge treatment
- Seymour Duncan® JAZZ model™ (H) neck pickup
- Seymour Duncan® Custom 5™ (H) bridge pickup
- Edge-Zero tremolo bridge w/ZPS3
- Cosmo black hardware
- Gotoh® Strap lock pins
- Hardshell case included



j. custom

AGT
(Almandite Garnet)

BRE
(Black Rutile)

BSR
(Brownish Sphalerite)

RBS
(Royal Blue Sapphire)

¥385,000 (税抜価格 ¥350,000)

7-STRING



j. custom

SDE
(Sodalite)

¥401,500 (税抜価格 ¥365,000)

RG8570Z

MADE IN JAPAN

- RG j.custom Super Wizard 5pc Maple/Wenge neck
- AAA Flamed Maple (4mm) top/African Mahogany body
- Bound Macassar Ebony fretboard w/Tree of Life inlay
- Jumbo frets w/j.custom fret edge treatment
- DiMarzio® Air Norton™ (H) neck pickup
- DiMarzio® True Velvet™ (S) middle pickup
- DiMarzio® The Tone Zone® (H) bridge pickup
- Edge-Zero tremolo bridge w/ZPS3
- Cosmo black hardware
- Gotoh® Strap lock pins
- Hardshell case included

RG8527Z

MADE IN JAPAN

- RG j.custom Wizard-7 5pc Maple/Wenge neck
- AAA Flamed Maple (4mm) top/African Mahogany body
- Bound Macassar Ebony fretboard w/Tree of Life inlay
- Jumbo frets w/j.custom fret edge treatment
- DiMarzio® PAF®7 (H) neck pickup
- DiMarzio® PAF®7 (H) bridge pickup
- Edge-Zero 7 tremolo bridge w/ZPS3
- Cosmo black hardware
- Gotoh® Strap lock pins
- Hardshell case included

Left-handed

j. custom



BSR
(Brownish Sphalerite)

SPOT MODEL

¥418,000 (税抜価格 ¥380,000)

RG8570ZL

MADE IN JAPAN

- RG j.custom Super Wizard 5pc Maple/Wenge neck
- AAA Flamed Maple (4mm) top/African Mahogany body
- Bound Macassar Ebony fretboard w/Tree of Life inlay
- Jumbo frets w/j.custom fret edge treatment
- DiMarzio® Air Norton™ (H) neck pickup
- DiMarzio® True Velvet™ (S) middle pickup
- DiMarzio® The Tone Zone® (H) bridge pickup
- Edge-Zero tremolo bridge w/ZPS3
- Cosmo black hardware
- Gotoh® Strap lock pins
- Hardshell case included

RG

New Model



Prestige

DFM

(Deep Forest Green Metallic)

¥324,500 (税抜価格 ¥295,000)

RG5320C MADE IN JAPAN

- Super Wizard HP 5pc Maple/Wenge neck
- African Mahogany body
- Bound Macassar Ebony fretboard w/Off-set Mother of Pearl dot inlay
- Jumbo Stainless Steel frets w/Prestige fret edge treatment
- DiMarzio® Air Norton™ (H) neck pickup
- DiMarzio® The Tone Zone® (H) bridge pickup
- Coil-tap switch
- Lo-Pro Edge tremolo bridge
- Chrome hardware
- Luminlay side dots
- Hardshell case included



Prestige

CSW

(Cosmic Shadow)

SPOT MODEL

¥324,500 (税抜価格 ¥295,000)

RG5320 MADE IN JAPAN

- Super Wizard HP 5pc Maple/Wenge neck
- African Mahogany body
- Bound Macassar Ebony fretboard w/Off-set Mother of Pearl dot inlay
- Jumbo Stainless Steel frets w/Prestige fret edge treatment
- DiMarzio® Fusion Edge (H) neck pickup
- DiMarzio® Fusion Edge (H) bridge pickup
- Coil-tap switch
- Lo-Pro Edge tremolo bridge
- Cosmo black hardware
- Luminlay side dots
- Hardshell case included

Left-handed



Prestige

CSW

(Cosmic Shadow)

SPOT MODEL

¥357,500 (税抜価格 ¥325,000)

RG5320L MADE IN JAPAN

- Super Wizard HP 5pc Maple/Wenge neck
- African Mahogany body
- Bound Macassar Ebony fretboard w/Off-set Mother of Pearl dot inlay
- Jumbo Stainless Steel frets w/Prestige fret edge treatment
- DiMarzio® Fusion Edge (H) neck pickup
- DiMarzio® Fusion Edge (H) bridge pickup
- Coil-tap switch
- Lo-Pro Edge tremolo bridge
- Cosmo black hardware
- Luminlay side dots
- Hardshell case included

New Model



Prestige

BK

(Black)

SPOT MODEL

¥330,000 (税抜価格 ¥300,000)

RG5170B MADE IN JAPAN

- Super Wizard HP 5pc Maple/Wenge neck
- Basswood body
- Bound Macassar Ebony fretboard w/Off-set Mother of Pearl dot inlay
- Jumbo Stainless Steel frets w/Prestige fret edge treatment
- Fishman® Fluence Modern Humbucker Alnico (H) neck pickup
- Fishman® Fluence Single Width Ceramic (S) middle pickup
- Fishman® Fluence Modern Humbucker Ceramic (H) bridge pickup
- Fishman® Fluence Voicing switch
- Lo-Pro Edge tremolo bridge
- Gold (Black knobs) hardware
- Luminlay side dots
- Hardshell case included

New Model Left-handed

Prestige



BCF

(Burgundy Metallic Flat)

SPOT MODEL

¥324,500 (税抜価格 ¥295,000)

RG5121L MADE IN JAPAN

- Super Wizard HP 5pc Maple/Wenge neck
- African Mahogany body
- Bound Macassar Ebony fretboard w/Off-set Mother of Pearl dot inlay
- Jumbo Stainless Steel frets w/Prestige fret edge treatment
- Graph Tech® BLACK TUSQ XL® nut
- Fishman® Fluence Modern Humbucker Ceramic (H) neck pickup
- Fishman® Fluence Modern Humbucker Ceramic (H) bridge pickup
- Fishman® Fluence Voicing switch
- Gibraltar Standard II bridge
- Cosmo black hardware
- Gotoh® MG-T locking machine heads
- Luminlay side dots
- Hardshell case included



Prestige

TKF

(Transparent Black Flat)

¥242,000 (税抜価格 ¥220,000)

RG3050 MADE IN JAPAN

- Super Wizard HP 5pc Maple/Walnut neck
- African Mahogany body
- Macassar Ebony fretboard w/Off-set White dot inlay
- Jumbo frets w/Prestige fret edge treatment
- DiMarzio® Air Norton™ (H) neck pickup
- DiMarzio® True Velvet™ (S) middle pickup
- DiMarzio® The Tone Zone® (H) bridge pickup
- Edge tremolo bridge
- Cosmo black hardware
- Hardshell case included



Prestige

TDF

(Transparent Deep Blue Flat)

¥242,000 (税抜価格 ¥220,000)

RG3070 MADE IN JAPAN

- Super Wizard HP 5pc Maple/Walnut neck
- African Mahogany body
- Macassar Ebony fretboard w/Off-set White dot inlay
- Jumbo frets w/Prestige fret edge treatment
- DiMarzio® Air Norton™ (H) neck pickup
- DiMarzio® True Velvet™ (S) middle pickup
- DiMarzio® The Tone Zone® (H) bridge pickup
- Edge tremolo bridge
- Cosmo black hardware
- Hardshell case included

8-STRING



Prestige

LDK

(Lightning Through A Dark)

¥302,500 (税抜価格 ¥275,000)

RG5328 MADE IN JAPAN

- Wizard-8 5pc Maple/Wenge neck
- 686mm/27" scale
- Ash body
- Bound Macassar Ebony fretboard w/Mother of Pearl dot inlay
- Jumbo Stainless Steel frets w/Prestige fret edge treatment
- Graph Tech® BLACK TUSQ XL® nut
- DiMarzio® Fusion Edge 8 (H) neck pickup
- DiMarzio® Fusion Edge 8 (H) bridge pickup
- Coil-tap switch
- Gibraltar Standard II-8 bridge
- Cosmo black hardware
- Gotoh® MG-T locking machine heads
- Factory Tuning: 1D#,2A#,3F#,4C#,5G#,6D#,7A#,8F
- String Gauge: .009/.011/.016/.024/.032/.042/.054/.065
- Luminlay side dots
- Hardshell case included



¥148,500 (税抜価格 ¥135,000)

RG6HSHFX

MADE IN JAPAN

- Super Wizard 5pc Maple/Walnut neck
- Basswood body
- Rosewood fretboard
- Jumbo frets
- Graph Tech® BLACK TUSQ XL® nut
- V7 (H) neck pickup
- S1 (S) middle pickup
- V8 (H) bridge pickup
- Mono-rail bridge
- Black hardware
- Gotoh® MG-T locking machine heads



¥198,000 (税抜価格 ¥180,000)

RG1121PB

- Wizard 11pc Maple/Walnut/Bubinga neck
- Poplar Burl top/American Basswood body
- Ebony fretboard w/Mother of Pearl dot inlay
- Jescar EVO Gold frets w/Premium fret edge treatment
- DiMarzio® Fusion Edge (H) neck pickup
- DiMarzio® Fusion Edge (H) bridge pickup
- Coil-tap switch
- Mono-rail bridge
- Cosmo black hardware
- Gotoh® MG-T locking machine heads
- Luminescent side dot inlay
- Gig bag included

7-STRING



¥209,000 (税抜価格 ¥190,000)

RG1127PBFX

- Wizard II-7 11pc Maple/Walnut/Bubinga neck
- Poplar Burl top/American Basswood body
- Ebony fretboard w/Mother of Pearl dot inlay
- Jescar EVO Gold frets w/Premium fret edge treatment
- DiMarzio® Fusion Edge-7 (H) neck pickup
- DiMarzio® Fusion Edge-7 (H) bridge pickup
- Coil-tap switch
- Mono-rail bridge
- Cosmo black hardware
- Gotoh® MG-T locking machine heads
- Luminescent side dot inlay
- Gig bag included



¥203,500 (税抜価格 ¥185,000)

RG60ALS

- Nitro Wizard 5pc Panga Panga/Walnut neck
- Nyatoh body
- Macassar Ebony fretboard w/White Step off-set dot inlay
- Jumbo Sub Zero treated frets
- SUSTAINIAC® Driver neck pickup
- DiMarzio® Fusion Edge (H) bridge pickup
- Sustainiac switch on tone control (push/pull)
- 3-way mini switch for Sustainiac
- Edge-Zero II tremolo bridge
- Cosmo black hardware
- Schaller S-Locks strap lock pins
- Luminescent side dot inlay
- Luminescent Ibanez logo

New Model



¥154,000 (税抜価格 ¥140,000)

RG631ALF

- Nitro Wizard 5pc Panga Panga/Walnut neck
- Nyatoh body
- Macassar Ebony fretboard w/White Step off-set dot inlay
- Jumbo Sub Zero treated frets
- Fishman® Fluence Modern Humbucker Alnico (H) neck pickup
- Fishman® Fluence Modern Humbucker Ceramic (H) bridge pickup
- Mini Toggle Switch for Voice changing
- Gibraltar Standard II bridge
- Black hardware
- Gotoh® MG-T locking machine heads
- Schaller S-Locks strap lock pins
- Luminescent side dot inlay
- Luminescent Ibanez logo



¥66,000 (税抜価格 ¥60,000)

RG350DXZ

- Wizard III Maple neck
- Meranti body
- Bound Jatoba fretboard w/Sharktooth inlay
- Jumbo frets
- Quantum (H) neck pickup
- Quantum (S) middle pickup
- Quantum (H) bridge pickup
- Edge-Zero II tremolo bridge w/ZPS3Fe
- Black hardware



¥66,000 (税抜価格 ¥60,000)

RG350ZB

- Wizard III Maple neck
- Meranti body
- Jatoba fretboard w/Off-set white dot inlay
- Jumbo frets
- Quantum (H) neck pickup
- Quantum (S) middle pickup
- Quantum (H) bridge pickup
- Edge-Zero II tremolo bridge w/ZPS3Fe
- Black hardware



¥82,500 (税抜価格 ¥75,000)

RG370AHMZ

- Wizard III Maple neck
- Ash body
- Maple fretboard w/Black dot inlay
- Jumbo frets
- Quantum (H) neck pickup
- Quantum (S) middle pickup
- Quantum (H) bridge pickup
- Edge-Zero II tremolo bridge w/ZPS3Fe
- Cosmo black hardware



SPB
(Sapphire Blue)

¥82,500 (税抜価格 ¥75,000)

RG370FMZ

- Wizard III Maple neck
- Flamed Maple top/Meranti body
- Bound Jatoba fretboard w/Sharktooth inlay
- Jumbo frets
- Quantum (H) neck pickup
- Quantum (S) middle pickup
- Quantum (H) bridge pickup
- Edge-Zero II tremolo bridge w/ZPS3Fe
- Cosmo black hardware



WK
(Weathered Black)

¥66,000 (税抜価格 ¥60,000)

RG370ZB

- Wizard III Maple neck
- Meranti body
- Jatoba fretboard w/Off-set white dot inlay
- Jumbo frets
- Quantum (H) neck pickup
- Quantum (S) middle pickup
- Quantum (H) bridge pickup
- Edge-Zero II tremolo bridge w/ZPS3Fe
- Black hardware



BKF
(Black Flat)

¥55,000 (税抜価格 ¥50,000)

RG421EX

- Wizard III Maple neck
- Meranti body
- Bound Jatoba fretboard w/White dot inlay
- Jumbo frets
- Quantum (H) neck pickup
- Quantum (H) bridge pickup
- F106 bridge
- Black hardware



ABL
(Antique Brown Stained Low Gloss)

¥92,950 (税抜価格 ¥84,500)

RG421HPAM

- Wizard III Roasted Maple neck
- Ash top/Nyatoh body
- Roasted Maple fretboard w/Black dot inlay
- Jumbo frets
- DiMarzio® Air Norton™ (H) neck pickup
- DiMarzio® The Tone Zone® (H) bridge pickup
- F106 bridge
- Black hardware

SPOT MODEL



CHF
(Caribbean Shoreline Flat)

SPOT MODEL

¥77,000 (税抜価格 ¥70,000)

RG421PB

- Wizard III Maple neck
- Poplar Burl top/Meranti body
- Jatoba fretboard w/White dot inlay
- Jumbo frets
- Quantum (H) neck pickup
- Quantum (H) bridge pickup
- F106 bridge
- Cosmo black hardware

SBF
(Sapphire Blue Flat)

7-STRING



SBF
(Sapphire Blue Flat)

¥82,500 (税抜価格 ¥75,000)

RG7421PB

- Wizard II-7 3pc Maple neck
- Poplar Burl top/Meranti body
- Jatoba fretboard w/White dot inlay
- Jumbo frets
- Quantum-7 (H) neck pickup
- Quantum-7 (H) bridge pickup
- F107 bridge
- Black hardware

8-STRING



WH
(White)

¥93,500 (税抜価格 ¥85,000)

RG8

- Wizard II-8 5pc Maple/Walnut neck
- 686mm/27" scale
- Meranti body
- Jatoba fretboard w/White dot inlay
- Jumbo frets
- IBZ-8 (H) neck pickup
- IBZ-8 (H) bridge pickup
- F108 bridge
- Black hardware
- Factory Tuning: 1D#,2A#,3F#,4C#,5G#,6D#,7A#,8F
- String Gauge: .009/.011/.016/.024/.032/.042/.054/.065

New Model 8-STRING



IPT
(Iron Pewter)

SPOT MODEL

¥143,000 (税抜価格 ¥130,000)

RG80F

- Wizard II-8 5pc Maple/Walnut neck
- 686mm/27" scale
- Meranti body
- Rosewood fretboard w/White dot inlay
- Jumbo frets
- Fishman® Fluence Modern Humbucker Alnico-8 (H) neck pickup
- Fishman® Fluence Modern Humbucker Ceramic-8 (H) bridge pickup
- Mini Toggle Switch for Voice changing
- F108 bridge
- Gold hardware
- Factory Tuning: 1D#,2A#,3F#,4C#,5G#,6D#,7A#,8F
- String Gauge: .009/.011/.016/.024/.032/.042/.054/.065

9-STRING



FDF
(Faded Denim Burst Flat)

SPOT MODEL

¥187,000 (税抜価格 ¥170,000)

RGIR9FME

- Nitro Wizard-9 5pc Maple/Walnut neck
- 712mm/28" scale
- Flamed Maple top/Nyatoh body
- Rosewood fretboard w/White dot inlay
- Jumbo frets
- Graph Tech® nut
- EMG® 909 (H) neck pickup
- EMG® 909 (H) bridge pickup
- Gibraltar Standard II-9 bridge
- Cosmo black hardware
- Factory Tuning: 1E,2B,3G,4D,5A,6E,7B,8F#,9C#
- String Gauge: .009/.011/.016/.024/.032/.042/.054/.075/.090

7-STRING



BKF
(Black Flat)

¥143,000 (税抜価格 ¥130,000)

RGIXL7

- Nitro Wizard-7 XL 3pc Maple/Bubinga neck
- 686mm/27" scale
- Nyatoh body
- Ebony fretboard
- Jumbo frets
- DiMarzio® Fusion Edge-7 (H) neck pickup
- DiMarzio® Fusion Edge-7 (H) bridge pickup
- Coil-tap switch
- Gibraltar Standard II-7 bridge
- Black hardware
- Gotoh® MG-T locking machine heads
- Factory Tuning: 1D,2A,3F,4C,5G,6D,7A
- String Gauge: .010/.013/.017/.026/.036/.046/.059
- Luminescent side dot inlay

RGA



AXION LABEL

IAF
(Indigo Aurora Burst Flat)

¥225,500 (税抜価格 ¥205,000)

RGA61AL

- Nitro Wizard 5pc Panga Panga/Walnut neck
- Flamed Maple top/Nyatoh body
- Macassar Ebony fretboard w/White Step off-set dot inlay
- Jumbo Sub Zero treated frets
- Bare Knuckle Aftermath (H) neck pickup
- Bare Knuckle Aftermath (H) bridge pickup
- Coil-tap switch
- Gibraltar Standard II bridge
- Cosmo black hardware
- Gotoh® MG-T locking machine heads
- Schaller S-Locks strap lock pins
- Luminescent side dot inlay
- Luminescent Ibanez logo

New Model



AXION LABEL

OEM
(Metallic Orange Eclipse Matte)

SPOT MODEL

¥159,500 (税抜価格 ¥145,000)

RGA61ALN

- Nitro Wizard 5pc Panga Panga/Walnut neck
- Nyatoh body
- Macassar Ebony fretboard w/White Step off-set dot inlay
- Jumbo Sub Zero treated frets
- DiMarzio® Fusion Edge (H) neck pickup
- DiMarzio® Fusion Edge (H) bridge pickup
- Coil-tap switch
- Gibraltar Standard II bridge
- Cosmo black hardware
- Gotoh® MG-T locking machine heads
- Schaller S-Locks strap lock pins
- Luminescent side dot inlay
- Luminescent Ibanez logo



BAM
(Black Aurora Burst Matte)

SPOT MODEL

¥71,500 (税抜価格 ¥65,000)

RGA42EX

- Wizard III Maple neck
- Meranti body
- Jatoba fretboard w/Off-set white dot inlay
- Jumbo frets
- Quantum (H) neck pickup
- Quantum (H) bridge pickup
- F106 bridge
- Black hardware



BLF
(Blue Lagoon Burst Flat)

¥77,000 (税抜価格 ¥70,000)

RGA42FM

- Wizard III Maple neck
- Flamed Maple top/Meranti body
- Jatoba fretboard w/Off-set white dot inlay
- Jumbo frets
- Quantum (H) neck pickup
- Quantum (H) bridge pickup
- F106 bridge
- Black hardware

7-STRING



BLF
(Blue Lagoon Burst Flat)

SPOT MODEL

¥104,500 (税抜価格 ¥95,000)

RGA7420FM

- Wizard II-7 3pc Maple neck
- Flamed Maple top/Meranti body
- Jatoba fretboard w/Off-set white dot inlay
- Jumbo frets
- Quantum-7 (H) neck pickup
- Quantum-7 (H) bridge pickup
- Edge-Zero II-7 tremolo bridge
- Black hardware

RGD

7-STRING



NTF
(Natural Flat)

¥374,000 (税抜価格 ¥340,000)

RGDR4327

MADE IN JAPAN

- Wizard-7 5pc Maple/Wenge neck w/KTS™ TITANIUM rods
- 673mm/26.5" scale
- Richlite top/African Mahogany body
- Bound Macassar Ebony fretboard w/Off-set Luminlay dot inlay
- Jumbo frets w/Prestige fret edge treatment
- DiMarzio® Fusion Edge 7 (H) neck pickup
- DiMarzio® Fusion Edge 7 (H) bridge pickup
- Lo-Pro Edge 7 tremolo bridge
- Black hardware
- Factory Tuning: 1D,2A,3F,4C,5G,6D,7A
- String Gauge: .010/.013/.017/.026/.036/.046/.059
- Luminlay side dots
- Hardshell case included

New Model 7-STRING



Prestige

NTF
(Natural Flat)
SPOT MODEL

¥363,000 (税抜価格 ¥330,000)

RGDR4427FX

MADE IN JAPAN

- Wizard-7 5pc Maple/Wenge neck w/KTS™ TITANIUM rods
- 673mm/26.5" scale
- Richlite top/Ash body
- Bound Macassar Ebony fretboard w/Off-set Luminlay dot inlay
- Jumbo frets w/Prestige fret edge treatment
- Graph Tech® BLACK TUSQ XL® nut
- DiMarzio® Fusion Edge 7 (H) neck pickup
- DiMarzio® Fusion Edge 7 (H) bridge pickup
- Mono-rail bridge
- Black hardware
- Gotoh® MG-T locking machine heads
- Factory Tuning: 1D,2A,3F,4C,5G,6D,7A
- String Gauge: .010/.013/.017/.026/.036/.046/.059
- Luminlay side dots
- Hardshell case included

7-STRING Multi Scale



AXION LABEL

BAM
(Black Aurora Burst Matte)

¥187,000 (税抜価格 ¥170,000)

RGD71ALMS

- Nitro Wizard-7 for Multi Scale 5pc Panga Panga/Walnut neck
- 686mm/27" scale at 7th string, 648mm/25.5" scale at 1st string
- Nyatoh body
- Macassar Ebony fretboard w/White Step off-set dot inlay
- Jumbo Sub Zero treated frets
- Fishman® Fluence Modern Humbucker Ceramic-7 (H) neck pickup
- Fishman® Fluence Modern Humbucker Ceramic-7 (H) bridge pickup
- Fishman® Fluence Voicing switch on volume control (push/pull)
- Mono-rail bridge
- Black hardware
- Gotoh® MG-T locking machine heads
- Schaller S-Locks strap lock pins
- Luminescent side dot inlay
- Luminescent Ibanez logo

New Model



AXION LABEL

MTR
(Midnight Tropical Rainforest)

¥159,500 (税抜価格 ¥145,000)

RGD61ALA

- Nitro Wizard 5pc Panga Panga/Walnut neck
- 673mm/26.5" scale
- Ash body
- Macassar Ebony fretboard w/White Step off-set dot inlay
- Jumbo Sub Zero treated frets
- Fishman® Fluence Modern Humbucker Alnico (H) neck pickup
- Fishman® Fluence Modern Humbucker Ceramic (H) bridge pickup
- Fishman® Fluence Voicing switch on volume control (push/pull)
- Coil-tap switch
- Mono-rail bridge
- Black hardware
- Gotoh® MG-T locking machine heads
- Factory Tuning: 1D,2A,3F,4C,5G,6D
- String Gauge: .010/.013/.017/.026/.036/.046
- Schaller S-Locks strap lock pins
- Luminescent side dot inlay
- Luminescent Ibanez logo

New Model 7-STRING



AXION LABEL

CKF
(Charcoal Burst Black Stained Flat)

¥220,000 (税抜価格 ¥200,000)

RGD71ALPA

- Nitro Wizard-7 5pc Panga Panga/Walnut neck
- 673mm/26.5" scale
- Poplar Burl top/Layered Ash & Nyatoh body
- Macassar Ebony fretboard w/White Step off-set dot inlay
- Jumbo Sub Zero treated frets
- Bare Knuckle Aftermath-7 (H) neck pickup
- Bare Knuckle Aftermath-7 (H) bridge pickup
- Coil-tap switch
- Mono-rail bridge
- Black hardware
- Gotoh® MG-T locking machine heads
- Factory Tuning: 1D,2A,3F,4C,5G,6D,7A
- String Gauge: .010/.013/.017/.026/.036/.046/.059
- Schaller S-Locks strap lock pins
- Luminescent side dot inlay
- Luminescent Ibanez logo

New Model 7-STRING



AXION LABEL

EEM
(Metallic Green Eclipse Matte)
SPOT MODEL

¥181,500 (税抜価格 ¥165,000)

RGD70ALNB

- Nitro Wizard-7 5pc Panga Panga/Walnut neck
- 673mm/26.5" scale
- Nyatoh body
- Macassar Ebony fretboard w/White Step off-set dot inlay
- Jumbo Sub Zero treated frets
- DiMarzio® Fusion Edge 7 (H) neck pickup
- DiMarzio® Fusion Edge 7 (H) bridge pickup
- Coil-tap switch
- Edge-Zero II-7 tremolo bridge w/ZPS3Fe
- Black hardware
- Factory Tuning: 1D,2A,3F,4C,5G,6D,7A
- String Gauge: .010/.013/.017/.026/.036/.046/.059
- Schaller S-Locks strap lock pins
- Luminescent side dot inlay
- Luminescent Ibanez logo

New Model 7-STRING



AXION LABEL

DSF
(Deep Seafloor Fade Flat)

¥126,500 (税抜価格 ¥115,000)

RGD7521PB

- Wizard II-7 Roasted Maple neck
- 673mm/26.5" scale
- Poplar Burl top/Nyatoh body
- Jatoba fretboard w/White dot inlay
- Jumbo frets
- DiMarzio® PAF7 (H) neck pickup
- DiMarzio® PAF7 (H) bridge pickup
- Coil-tap switch
- Gibraltar Standard II-7 bridge
- Black hardware
- Factory Tuning: 1D,2A,3F,4C,5G,6D,7A
- String Gauge: .010/.013/.017/.026/.036/.046/.059

Q

New Model



LBM
(Laser Blue Matte)
SPOT MODEL

¥146,520 (税抜価格 ¥133,200)

Q52

- Wizard C 3pc Roasted Maple/Bubinga neck
- Nyatoh body
- Roasted Birdseye Maple fretboard w/Mother of Pearl Step off-set dot inlay
- Jescar EVO Gold frets
- Q58 (H) neck pickup
- Q58 (H) bridge pickup
- dyna-MIX10 switching system w/Alter Switch
- Ibanez Mono-Tune bridge
- Cosmo black hardware
- Ibanez Custom String Lock
- Luminescent side dot inlay
- Gig bag included

New Model



BKF
(Black Flat)
SPOT MODEL



SFM
(Sea Foam Green Matte)
SPOT MODEL

¥146,520 (税抜価格 ¥133,200)

Q54

- Wizard C 3pc Roasted Maple/Bubinga neck
- Nyatoh body
- Roasted Birdseye Maple fretboard w/Mother of Pearl Step off-set dot inlay
- Jescar EVO Gold frets
- R1 (S) neck pickup
- R1 (S) middle pickup
- Q58 (H) bridge pickup
- dyna-MIX9 switching system w/Alter Switch
- Ibanez Mono-Tune bridge
- Cosmo black hardware
- Ibanez Custom String Lock
- Luminescent side dot inlay
- Gig bag included

New Model



BKF
(Black Flat)
SPOT MODEL

¥146,520 (税抜価格 ¥133,200)

QX52

- Parallel Wizard 3pc Roasted Maple/Bubinga neck
- Nyatoh body
- Roasted Birdseye Maple fretboard w/Mother of Pearl Step off-set dot inlay
- Jescar EVO Gold frets
- Q58 (H) neck pickup
- Q58 (H) bridge pickup
- dyna-MIX10 switching system w/Alter Switch
- Ibanez Mono-Tune bridge
- Cosmo black hardware
- Ibanez Custom String Lock
- Luminescent side dot inlay
- Gig bag included

New Model 7-STRING



ABS
(Antique Brown Stained)
SPOT MODEL

¥175,890 (税抜価格 ¥159,900)

QX527PB

- Parallel Wizard-7 5pc Roasted Maple/Bubinga neck
- Poplar Burl top/Nyatoh body
- Roasted Birdseye Maple fretboard w/Mother of Pearl Step off-set dot inlay
- Jescar EVO Gold frets
- Q58-7 (H) neck pickup
- Q58-7 (H) bridge pickup
- dyna-MIX10 switching system w/Alter Switch
- Ibanez Mono-Tune bridge
- Cosmo black hardware
- Ibanez Custom String Lock
- Luminescent side dot inlay
- Gig bag included

New Model



BSM
(Blue Sphere Burst Matte)
SPOT MODEL

¥161,260 (税抜価格 ¥146,600)

QX54QM

- Parallel Wizard 3pc Roasted Maple/Bubinga neck
- Quilted Maple top/Nyatoh body
- Roasted Birdseye Maple fretboard w/Mother of Pearl Step off-set dot inlay
- Jescar EVO Gold frets
- R1 (S) neck pickup
- R1 (S) middle pickup
- Q58 (H) bridge pickup
- dyna-MIX9 switching system w/Alter Switch
- Ibanez Mono-Tune bridge
- Cosmo black hardware
- Ibanez Custom String Lock
- Luminescent side dot inlay
- Gig bag included



AZ



Prestige

AZ2204 MADE IN JAPAN

- AZ Oval C S-TECH WOOD Roasted Maple neck
- 22 frets
- Alder body
- S-TECH WOOD Roasted Maple fretboard w/Black dot inlay
- Jumbo Stainless Steel frets w/Prestige fret edge treatment
- Bone nut
- Seymour Duncan® Hyperion™ (S) neck pickup
- Seymour Duncan® Hyperion™ (S) middle pickup
- Seymour Duncan® Hyperion™ (H) bridge pickup
- dyna-MIX9 switching system w/Alter Switch
- Gotoh® T1802 tremolo bridge
- Chrome hardware
- Gotoh® Magnum Lock machine heads w/H.A.P.
- Luminlay side dots
- Hardshell case included

HRM
(Hazy Rose Metallic)

ICM
(Ice Blue Metallic)

OPEN PRICE



Prestige

AZ2204B MADE IN JAPAN

- AZ Oval C S-TECH WOOD Roasted Maple neck
- 22 frets
- Alder body
- S-TECH WOOD Roasted Maple fretboard w/Black dot inlay
- Jumbo Stainless Steel frets w/Prestige fret edge treatment
- Bone nut
- Seymour Duncan® Hyperion™ (S) neck pickup
- Seymour Duncan® Hyperion™ (S) middle pickup
- Seymour Duncan® Hyperion™ (H) bridge pickup
- dyna-MIX9 switching system w/Alter Switch
- Gotoh® T1802 tremolo bridge
- Chrome hardware
- Gotoh® Magnum Lock machine heads w/H.A.P.
- Luminlay side dots
- Hardshell case included

BK
(Black)

OPEN PRICE



Prestige

AZ2204F MADE IN JAPAN

- AZ Oval C S-TECH WOOD Roasted Maple neck
- 22 frets
- AAA Flamed Maple (4mm) top/Alder body
- S-TECH WOOD Roasted Maple fretboard w/Black dot inlay
- Jumbo Stainless Steel frets w/Prestige fret edge treatment
- Bone nut
- Seymour Duncan® Hyperion™ (S) neck pickup
- Seymour Duncan® Hyperion™ (S) middle pickup
- Seymour Duncan® Hyperion™ (H) bridge pickup
- dyna-MIX9 switching system w/Alter Switch
- Gotoh® T1802 tremolo bridge
- Chrome hardware
- Gotoh® Magnum Lock machine heads w/H.A.P.
- Luminlay side dots
- Hardshell case included

WHS
(White Sunburst)

SPOT MODEL
OPEN PRICE



Prestige

AZ2202A MADE IN JAPAN

- AZ Oval C S-TECH WOOD Roasted Maple neck
- 22 frets
- Ash body
- S-TECH WOOD Roasted Maple fretboard w/Black dot inlay
- Jumbo Stainless Steel frets w/Prestige fret edge treatment
- Bone nut
- Seymour Duncan® Hyperion™ (H) neck pickup
- Seymour Duncan® Hyperion™ (H) bridge pickup
- dyna-MIX10 switching system w/Alter Switch
- Gotoh® T1802 tremolo bridge
- Chrome hardware
- Gotoh® Magnum Lock machine heads w/H.A.P.
- Luminlay side dots
- Hardshell case included

TFB
(Tri Fade Burst)

OPEN PRICE



Prestige

AZ2204N MADE IN JAPAN

- AZ Oval C S-TECH WOOD Roasted Maple neck
- 22 frets
- Alder body
- Rosewood fretboard w/Mother of Pearl dot inlay
- Jumbo Stainless Steel frets w/Prestige fret edge treatment
- Bone nut
- Seymour Duncan® Fortuna™ (S) neck pickup
- Seymour Duncan® Fortuna™ (S) middle pickup
- Seymour Duncan® Fortuna™ (H) bridge pickup
- dyna-MIX9 switching system w/Alter Switch
- Gotoh® T1702B tremolo bridge
- Chrome hardware
- Gotoh® Magnum Lock machine heads w/H.A.P.
- Luminlay side dots
- Fretboard Radius: 228mm at nut to 305mm at 22nd fret Compound
- Hardshell case included

BK
(Black)
SPOT MODEL

PBM
(Prussian Blue Metallic)
SPOT MODEL

AWD
(Antique White Blonde)
SPOT MODEL
OPEN PRICE

Prestige

BKF
(Black Flat)
SPOT MODEL

ICM
(Ice Blue Metallic)

PWF
(Pearl White Flat)
SPOT MODEL

TFF
(Tri Fade Burst Flat)

OPEN PRICE

AZ2402 **MADE IN JAPAN**

- AZ Oval C S-TECH WOOD Roasted Maple neck
- 24 frets
- Alder body
- S-TECH WOOD Roasted Maple fretboard w/Black dot inlay
- Jumbo Stainless Steel frets w/Prestige fret edge treatment
- Bone nut
- Seymour Duncan® Hyperion™ (H) neck pickup
- Seymour Duncan® Hyperion™ (H) bridge pickup
- dyna-MIX10 switching system w/Alter Switch
- Gotoh® T1802 tremolo bridge
- Chrome hardware
- Gotoh® Magnum Lock machine heads w/H.A.P.
- Luminlay side dots
- Hardshell case included

New Model 7-STRING

Prestige

TFF
(Tri Fade Burst Flat)

OPEN PRICE

AZ24027 **MADE IN JAPAN**

- AZ7 Oval C S-TECH WOOD Roasted Maple neck
- 24 frets
- Alder body
- S-TECH WOOD Roasted Maple fretboard w/Black dot inlay
- Jumbo Stainless Steel frets w/Prestige fret edge treatment
- Graph Tech® BLACK TUSQ XL® nut
- Seymour Duncan® Hyperion™7 (H) neck pickup
- Seymour Duncan® Hyperion™7 (H) bridge pickup
- dyna-MIX10 switching system w/Alter Switch
- Gotoh® T1872S tremolo bridge
- Chrome hardware
- Gotoh® MG-T locking machine heads
- Luminlay side dots
- Hardshell case included

New Model 7-STRING

Prestige

BK
(Black)

OPEN PRICE

AZ24047 **MADE IN JAPAN**

- AZ7 Oval C S-TECH WOOD Roasted Maple neck
- 24 frets
- Alder body
- S-TECH WOOD Roasted Maple fretboard w/Black dot inlay
- Jumbo Stainless Steel frets w/Prestige fret edge treatment
- Graph Tech® BLACK TUSQ XL® nut
- Seymour Duncan® Hyperion™7 (S) neck pickup
- Seymour Duncan® Hyperion™7 (S) middle pickup
- Seymour Duncan® Hyperion™7 (H) bridge pickup
- dyna-MIX9 switching system w/Alter Switch
- Gotoh® T1872S tremolo bridge
- Chrome hardware
- Gotoh® MG-T locking machine heads
- Luminlay side dots
- Hardshell case included

Left-handed

Prestige

TFF
(Tri Fade Burst Flat)

PWF
(Pearl White Flat)
SPOT MODEL **NEW FINISH**

OPEN PRICE

AZ2402L **MADE IN JAPAN**

- AZ Oval C S-TECH WOOD Roasted Maple neck
- 24 frets
- Alder body
- S-TECH WOOD Roasted Maple fretboard w/Black dot inlay
- Jumbo Stainless Steel frets w/Prestige fret edge treatment
- Bone nut
- Seymour Duncan® Hyperion™ (H) neck pickup
- Seymour Duncan® Hyperion™ (H) bridge pickup
- dyna-MIX10 switching system w/Alter Switch
- Gotoh® T1802 tremolo bridge
- Chrome hardware
- Gotoh® Magnum Lock machine heads w/H.A.P.
- Luminlay side dots
- Hardshell case included

Premium

CBB
(Cerulean Blue Burst)
SPOT MODEL

OPEN PRICE

AZ226PB

- AZ Oval C Roasted Maple neck
- 22 frets
- Poplar Burl top/American Basswood body
- Roasted Maple fretboard w/Black dot inlay
- Jumbo Stainless Steel frets
- Graph Tech® TUSQ XL nut
- Seymour Duncan® Hyperion™ (S) neck pickup
- Seymour Duncan® Hyperion™ (S) middle pickup
- Seymour Duncan® Hyperion™ (H) bridge pickup
- dyna-MIX9 switching system w/Alter Switch
- Gotoh® T1502 tremolo bridge
- Chrome hardware
- Gotoh® MG-T locking machine heads
- Luminescent side dot inlay
- Gig bag included

Premium

CKB
(Charcoal Black Burst)
SPOT MODEL

OPEN PRICE

AZ242PBG

- AZ Oval C Roasted Maple neck
- 24 frets
- Poplar Burl top/American Basswood body
- Roasted Maple fretboard w/Black dot inlay
- Jumbo Stainless Steel frets
- Graph Tech® TUSQ XL nut
- Seymour Duncan® Hyperion™ (H) neck pickup
- Seymour Duncan® Hyperion™ (H) bridge pickup
- dyna-MIX10 switching system w/Alter Switch
- Gotoh® T1502 tremolo bridge
- Gold hardware
- Gotoh® MG-T locking machine heads
- Luminescent side dot inlay
- Gig bag included

AZS

New Model



Prestige

BK
(Black)

OPEN PRICE

AZS2200 **MADE IN JAPAN**

- AZ Oval C S-TECH WOOD Roasted Maple neck
- Alder body
- S-TECH WOOD Roasted Maple fretboard w/Abalone dot inlay
- Jumbo Stainless Steel frets w/Prestige fret edge treatment
- Bone nut
- Seymour Duncan® Magic Touch-mini™ (H) neck pickup
- Seymour Duncan® Alnico II Pro™ Custom (S) bridge pickup
- dyna-MIX5 switching system w/Alter Switch
- Gotoh® T1802 tremolo bridge
- Chrome hardware
- Gotoh® Magnum Lock machine heads w/H.A.P.
- Luminlay side dots
- Hardshell case included

New Model



Prestige

PBM
(Prussian Blue Metallic)

TFB
(Tri Fade Burst)

OPEN PRICE

AZS2209H **MADE IN JAPAN**

- AZ Oval C S-TECH WOOD Roasted Maple neck
- Ash body
- S-TECH WOOD Roasted Maple fretboard w/Black dot inlay
- Jumbo Stainless Steel frets w/Prestige fret edge treatment
- Bone nut
- Seymour Duncan® Magic Touch-mini™ (H) neck pickup
- Seymour Duncan® Alnico II Pro™ Custom (S) bridge pickup
- dyna-MIX5 switching system w/Alter Switch
- Gotoh® F1803 bridge
- Chrome hardware
- Gotoh® Magnum Lock machine heads w/H.A.P.
- Luminlay side dots
- Hardshell case included

New Model



Prestige

STB
(Sunset Burst)

SPOT MODEL
OPEN PRICE

AZS2200F **MADE IN JAPAN**

- AZ Oval C S-TECH WOOD Roasted Maple neck
- Flamed Maple top/Alder body
- S-TECH WOOD Roasted Maple fretboard w/Abalone dot inlay
- Jumbo Stainless Steel frets w/Prestige fret edge treatment
- Bone nut
- Seymour Duncan® Magic Touch-mini™ (H) neck pickup
- Seymour Duncan® Alnico II Pro™ Custom (S) bridge pickup
- dyna-MIX5 switching system w/Alter Switch
- Gotoh® T1802 tremolo bridge
- Chrome hardware
- Gotoh® Magnum Lock machine heads w/H.A.P.
- Luminlay side dots
- Hardshell case included

New Model



Prestige

RBS
(Royal Blue Sapphire)

SPOT MODEL
OPEN PRICE

AZS2200Q **MADE IN JAPAN**

- AZ Oval C S-TECH WOOD Roasted Maple neck
- Quilted Maple top/Alder body
- S-TECH WOOD Roasted Maple fretboard w/Abalone dot inlay
- Jumbo Stainless Steel frets w/Prestige fret edge treatment
- Bone nut
- Seymour Duncan® Magic Touch-mini™ (H) neck pickup
- Seymour Duncan® Alnico II Pro™ Custom (S) bridge pickup
- dyna-MIX5 switching system w/Alter Switch
- Gotoh® T1802 tremolo bridge
- Chrome hardware
- Gotoh® Magnum Lock machine heads w/H.A.P.
- Luminlay side dots
- Hardshell case included



S



Premium

CLB

(Cerulean Blue Burst)

¥231,000 (税抜価格 ¥210,000)

S1070PBZ

- Wizard 11pc Panga Panga/Maple/Walnut/Bubinga neck
- Poplar Burl/Walnut/Curlly Maple/Panga Panga (16.5mm) top/ African Mahogany body
- Rosewood fretboard w/Mother of Pearl off-set dot inlay
- Jumbo Stainless Steel frets w/Premium fret edge treatment
- DiMarzio® Air Norton™ (H) neck pickup
- DiMarzio® True Velvet™ (S) middle pickup
- DiMarzio® The Tone Zone® (H) bridge pickup
- Edge-Zero II tremolo bridge w/ZPS3Fe
- Cosmo black hardware
- Gotoh® MG-T locking machine heads
- Luminescent side dot inlay
- Gig bag included

New Model



SFM

(Sea Foam Green Matte)

SPOT MODEL

¥66,000 (税抜価格 ¥60,000)

S561

- Wizard III Maple neck
- Meranti body
- Rosewood fretboard w/Off-set white dot inlay
- Jumbo frets
- Quantum (S) neck pickup
- Quantum (S) middle pickup
- Quantum (H) bridge pickup
- F106 bridge
- Black hardware



DEB

(Dragon Eye Burst)

¥115,500 (税抜価格 ¥105,000)

S670QM

- Wizard III Maple neck
- Quilted Maple top/Meranti body
- Rosewood fretboard w/Off-set white dot inlay
- Jumbo frets
- Quantum (H) neck pickup
- Quantum (S) middle pickup
- Quantum (H) bridge pickup
- Edge-Zero II tremolo bridge
- Cosmo black hardware



AXION LABEL

BCM

(Blue Chameleon)

¥176,000 (税抜価格 ¥160,000)

S671ALB

- Nitro Wizard 5pc Panga Panga/Walnut neck
- Nyatoh body
- Bound Macassar Ebony fretboard w/White Step off-set dot inlay
- Jumbo Sub Zero treated frets
- Fishman® Fluence Modern Humbucker Alnico (H) neck pickup
- Fishman® Fluence Single Width Ceramic (S) middle pickup
- Fishman® Fluence Modern Humbucker Ceramic (H) bridge pickup
- Fishman® Fluence Voicing switch on volume control (push/pull)
- Gibraltar Standard II bridge
- Black hardware
- Gotoh® MG-T locking machine heads
- Schaller S-Locks strap lock pins
- Luminescent side dot inlay
- Luminescent Ibanez logo

New Model



NTF

(Natural Flat)

SPOT MODEL

¥119,900 (税抜価格 ¥109,000)

SEW761FM

- Wizard III Roasted Maple neck
- Flamed Maple top/Meranti body
- Rosewood fretboard w/Off-set white acrylic pearl dot inlay
- Jumbo frets
- DiMarzio® True Velvet™ (S) neck pickup
- DiMarzio® True Velvet™ (S) middle pickup
- DiMarzio® The Tone Zone® (H) bridge pickup
- F106 bridge
- Gold hardware

SA



BMG

(Black Mirage Gradation)

SPB

(Sapphire Blue)

¥79,200 (税抜価格 ¥72,000)

SA360NQM

- SA Maple neck
- 22 frets
- Quilted Maple top/Okoume body
- Bound Jatoba fretboard w/Abalone dot inlay
- Medium frets
- Resolution Single (S) neck pickup
- Resolution Single (S) middle pickup
- Quantum (H) bridge pickup
- T102 tremolo bridge
- Chrome hardware

X

New Model 7-STRING



BKF
(Black Flat)
SPOT MODEL

¥195,800 (税抜価格 ¥178,000)

ICTB721

- Wizard II-7 5pc Maple/Walnut neck-through
- Okoume body
- Ebony fretboard
- Jumbo frets
- DiMarzio® D-Activator-7™ (H) neck pickup
- DiMarzio® D-Activator-7™ (H) bridge pickup
- Mono-rail bridge
- Black hardware
- Gotoh® MG-T locking machine heads
- Factory Tuning: 1D,2A,3F,4C,5G,6D,7A
- String Gauge: .010/.013/.017/.030/.042/.052/.064
- Luminescent side dot inlay
- Gig bag included

New Model



BKF
(Black Flat)
SPOT MODEL

¥195,800 (税抜価格 ¥178,000)

XPTB620

- Wizard III 5pc Maple/Walnut neck-through
- Okoume body
- Ebony fretboard
- Jumbo frets
- DiMarzio® D-Activator™ (H) neck pickup
- DiMarzio® D-Activator™ (H) bridge pickup
- Edge-Zero II bridge
- Black hardware
- Factory Tuning: 1D,2A,3F,4C,5G,6D
- String Gauge: .010/.013/.017/.030/.042/.052
- Luminescent side dot inlay
- Gig bag included

New Model 7-STRING



BKF
(Black Flat)
SPOT MODEL

¥206,800 (税抜価格 ¥188,000)

XPTB720

- Wizard II-7 5pc Maple/Walnut neck-through
- Okoume body
- Ebony fretboard
- Jumbo frets
- DiMarzio® D-Activator-7™ (H) neck pickup
- DiMarzio® D-Activator-7™ (H) bridge pickup
- Edge-Zero II-7 bridge
- Black hardware
- Factory Tuning: 1D,2A,3F,4C,5G,6D,7A
- String Gauge: .010/.013/.017/.030/.042/.052/.064
- Luminescent side dot inlay
- Gig bag included

Talman



J-LINE
IBANEZ | MADE IN JAPAN

BK
(Black)
SPOT MODEL

IDG
(Indigolite)
SPOT MODEL

IV
(Ivory)
SPOT MODEL

¥132,000 (税抜価格 ¥120,000)

TM730

MADE IN JAPAN

- TALMAN Classic-Plus 1pc Maple neck
- 22 frets
- Alder body
- Katalox fretboard w/White dot inlay
- Medium frets
- Bone nut
- TM J-LINE Single (S) neck pickup
- TM J-LINE Single (S) middle pickup
- TM J-LINE Single (S) bridge pickup
- ITL-PRO tremolo bridge
- Chrome hardware

AR

New Model



VLS
(Violin Sunburst)

¥126,500 (税抜価格 ¥115,000)

AR520HFM

- AR 3pc Maple set-in neck
- Flamed Maple top/Okoume body
- Bound Jatoba fretboard w/Acrylic & Abalone block inlay
- Medium frets
- Super 58 (H) neck pickup
- Super 58 (H) bridge pickup
- 2 Tri-sound switches
- Gibraltar Performer bridge
- Quik Change Classic tailpiece
- Gold hardware

New Model



BK
(Black)
SPOT MODEL

¥115,500 (税抜価格 ¥105,000)

AR520H

- AR 3pc Maple set-in neck
- Maple top/Okoume body
- Bound Jatoba fretboard w/Acrylic & Abalone block inlay
- Medium frets
- Super 58 (H) neck pickup
- Super 58 (H) bridge pickup
- 2 Tri-sound switches
- Gibraltar Performer bridge
- Quik Change Classic tailpiece
- Gold hardware

Gio



BKN
(Black Night)

OPEN PRICE

GRG170DX

- GRG Maple neck
- Poplar body
- Bound Purpleheart fretboard w/White Sharktooth inlay
- Jumbo frets
- Infinity R (H) neck pickup
- Infinity RS (S) middle pickup
- Infinity R (H) bridge pickup
- T102 tremolo bridge
- Chrome hardware



SB
(Sunburst)
SPOT MODEL



TBB
(Transparent Blue Burst)



TEB
(Transparent Emerald Burst)



TKS
(Transparent Black Sunburst)



TRB
(Transparent Red Burst)



TVT
(Transparent Violet Sunburst)
SPOT MODEL

OPEN PRICE

GRX70QA

- GRX Maple neck
- Quilted Maple Art Grain top/Poplar body
- Jatoba fretboard w/White dot inlay
- Medium frets
- Infinity R (H) neck pickup
- Infinity RS (S) middle pickup
- Infinity R (H) bridge pickup
- T106 tremolo bridge
- Chrome hardware

7-STRING



TBB
(Transparent Blue Burst)
SPOT MODEL



TKS
(Transparent Black Sunburst)

OPEN PRICE

GRG7221QA

- GRG7 Maple neck
- Quilted Maple Art Grain top/Poplar body
- Bound Purpleheart fretboard w/White dot inlay
- Jumbo frets
- Infinity R (H) neck pickup
- Infinity R (H) bridge pickup
- F107 bridge
- Black hardware



BKN
(Black Night)



CA
(Candy Apple)



MGN
(Metallic Light Green)



MLB
(Metallic Light Blue)

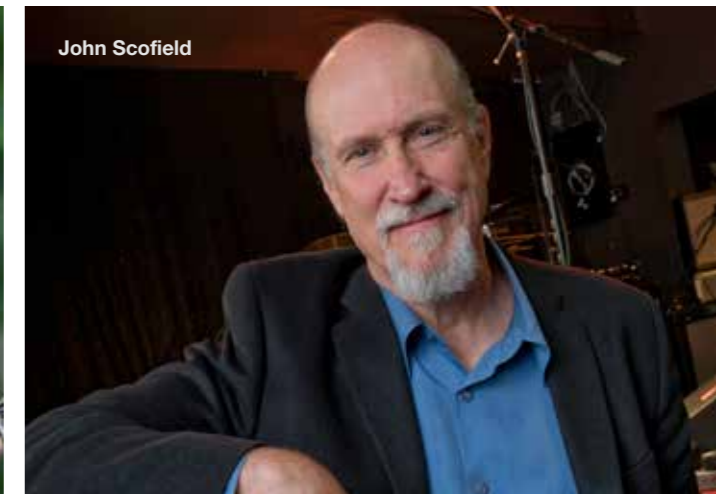


TFB
(Tri Fade Burst)

OPEN PRICE

GRX40

- GRX Maple neck
- Poplar body
- Jatoba fretboard w/White dot inlay
- Medium frets
- Infinity RS (S) neck pickup
- Infinity RS (S) middle pickup
- Infinity R (H) bridge pickup
- T106 tremolo bridge
- Chrome hardware



Signature Models

George Benson



¥368,500 (税抜価格 ¥335,000)

GB10 MADE IN JAPAN

- GB 3pc Maple set-in neck
- 22 frets
- Spruce top/Maple back & sides
- Bound Ebony fretboard w/Acrylic & Abalone block inlay
- Medium frets w/Prestige fret edge treatment
- Half-Bone/Half-Brass nut
- Max body thickness: 3 3/8"/Width at lower bout: 14 3/4"
- GB special (H) neck pickup
- GB special (H) bridge pickup
- Ebony bridge
- GB10 tailpiece
- Gold hardware
- Hardshell case included

George Benson



¥456,500 (税抜価格 ¥415,000)

LGB30 MADE IN JAPAN

- LGB 3pc Maple set-in neck
- 22 frets
- Spruce top/Maple back & sides
- Bound Ebony fretboard w/Acrylic & Abalone block inlay
- Medium frets w/Prestige fret edge treatment
- Bone nut
- Max body thickness: 4 1/4"/Width at lower bout: 16 1/2"
- Super 58 (H) neck pickup
- Super 58 (H) bridge pickup
- Ebony bridge
- LGB30 tailpiece
- Gold hardware
- Hardshell case included

Eric Krasno (Soulive)



¥330,000 (税抜価格 ¥300,000)

WRD
(Wine Red)

EKM100 MADE IN JAPAN

- EKM African Mahogany set-in neck
- 22 frets
- Figured Anigre top/back/sides
- Bound Ebony fretboard w/Acrylic & Abalone block inlay
- Jumbo frets w/Prestige fret edge treatment
- Bone nut
- Max body thickness: 2 5/8"/Width at lower bout: 15 3/4"
- DiMarzio® PAF® 36th Anniversary (H) neck pickup
- DiMarzio® PAF® 36th Anniversary (H) bridge pickup
- Gotoh® 510BN bridge
- Gotoh® GE101A tailpiece
- Gold hardware
- Gotoh® Magnum Lock machine heads
- Hardshell case included

John Scofield



¥363,000 (税抜価格 ¥330,000)

VT
(Vintage Sunburst)

JSM100 MADE IN JAPAN

- JSM African Mahogany set-in neck
- 22 frets
- Figured Anigre top/back/sides
- Bound Ebony fretboard w/Acrylic & Abalone block inlay
- Jumbo frets w/Prestige fret edge treatment
- Half-Bone/Half-Brass nut
- Max body thickness: 2 5/8"/Width at lower bout: 15 3/4"
- Super 58 (H) neck pickup
- Super 58 (H) bridge pickup
- Gotoh® 510BN bridge
- Gotoh® GE101A tailpiece
- Gold hardware
- Fretboard Radius: 184mm at nut to 250mm at 22th fret Compound
- Hardshell case included

Pat Metheny



¥418,000 (税抜価格 ¥380,000)

NT
(Natural)

PM200 MADE IN JAPAN

- PM African Mahogany set-in neck
- 22 frets
- Maple top/back/sides
- Bound Ebony fretboard w/Acrylic & Abalone block inlay
- Medium frets w/Prestige fret edge treatment
- Bone nut
- Max body thickness: 4 1/4"/Width at lower bout: 16 1/2"
- Silent 58 (H) neck pickup
- Gotoh® GE103B bridge
- PM tailpiece
- Gold hardware
- Hardshell case included

George Benson



BS
(Brown Sunburst)

¥225,500 (税抜価格 ¥205,000)

GB10SE

- GB 3pc Maple set-in neck
- 22 frets
- Spruce top/Maple back & sides
- Bound Ebony fretboard w/Acrylic & Abalone block inlay
- Medium frets w/Artstar fret edge treatment
- Half-Bone/Half-Brass nut
- Max body thickness: 3 3/8"/Width at lower bout: 14 1/2"
- GB special (H) neck pickup
- GB special (H) bridge pickup
- Ebony bridge
- GB10 tailpiece
- Gold hardware
- Hardshell case included

George Benson



VYS
(Vintage Yellow Sunburst)

¥181,500 (税抜価格 ¥165,000)

LGB30

- LGB30 3pc Nyatoh/Maple set-in neck
- 20 frets
- Spruce top/Flamed Maple back & sides
- Bound Ebony fretboard w/Acrylic & Abalone block inlay
- Medium frets w/Artstar fret edge treatment
- Bone nut
- Max body thickness: 3 5/8"/Width at lower bout: 15 3/4"
- Super 58 (H) neck pickup
- Super 58 (H) bridge pickup
- Gibraltar Artist bridge
- LGB30 tailpiece
- Gold hardware
- Hardshell case included

John Scofield



VYS
(Vintage Yellow Sunburst)

¥187,000 (税抜価格 ¥170,000)

JSM10

- JSM 3pc Nyatoh/Maple set-in neck
- 22 frets
- Flamed Maple top/back/sides
- Bound Ebony fretboard w/Acrylic & Abalone block inlay
- Medium frets w/Artstar fret edge treatment
- Bone nut
- Max body thickness: 2 5/8"/Width at lower bout: 15 3/4"
- Super 58 (H) neck pickup
- Super 58 (H) bridge pickup
- Tri-sound switch for neck pickup
- Gibraltar Artist bridge
- Quik Change III tailpiece
- Gold hardware
- Hardshell case included

Artstar

New Model



Prestige

BS
(Brown Sunburst)

¥352,000 (税抜価格 ¥320,000)

AF2000

MADE IN JAPAN

- AF Artstar 3pc African Mahogany/S-TECH WOOD Roasted Maple set-in neck
- 20 frets
- Spruce top/Figured Anigre back & sides
- Bound Ebony fretboard w/Acrylic & Abalone block inlay
- Medium frets w/Prestige fret edge treatment
- Bone nut
- Max body thickness: 3 3/4"/Width at lower bout: 16 1/2"
- Super 58 (H) neck pickup
- Super 58 (H) bridge pickup
- Ebony bridge
- AF Special tailpiece
- Gold hardware
- Hardshell case included

New Model



Prestige

BS
(Brown Sunburst)

¥352,000 (税抜価格 ¥320,000)

AM2000H

MADE IN JAPAN

- AM Artstar 3pc African Mahogany/S-TECH WOOD Roasted Maple set-in neck
- 22 frets
- Figured Anigre top/back/sides
- Bound Ebony fretboard w/Acrylic & Abalone block inlay
- Medium frets w/Prestige fret edge treatment
- Bone nut
- Max body thickness: 2 5/8"/Width at lower bout: 13 3/4"
- Super 58 (H) neck pickup
- Super 58 (H) bridge pickup
- Gotoh® 510BN bridge
- AM-H Special tailpiece
- Gold hardware
- Hardshell case included

New Model



Prestige

BS
(Brown Sunburst)

¥352,000 (税抜価格 ¥320,000)

AS2000

MADE IN JAPAN

- AS Artstar 3pc African Mahogany/S-TECH WOOD Roasted Maple set-in neck
- 22 frets
- Figured Anigre top/back/sides
- Bound Ebony fretboard w/Acrylic & Abalone block inlay
- Medium frets w/Prestige fret edge treatment
- Bone nut
- Max body thickness: 2 5/8"/Width at lower bout: 15 3/4"
- Super 58 (H) neck pickup
- Super 58 (H) bridge pickup
- Tri-sound switch for neck pickup
- Gotoh® 510BN bridge
- Gotoh® GE101A tailpiece
- Gold hardware
- Hardshell case included



DA
(Dark Amber)

¥154,000 (税抜価格 ¥140,000)

AFC151

- AFC 3pc Nyatoh/Maple set-in neck
- 20 frets
- Spruce top/Flamed Maple back & sides
- Bound Macassar Ebony fretboard w/Mother of Pearl off-set block inlay
- Medium frets w/Artstar fret edge treatment
- Max body thickness: 3 5/8"/Width at lower bout: 15 3/4"
- Magic Touch-Mini (H) neck pickup
- Ebony bridge
- VT14 w/AFC wood cover tailpiece
- Gold hardware
- Hardshell case included



RAF
(Resonant Antique Fade)

¥154,000 (税抜価格 ¥140,000)

AFV105

- AFV Artstar 3pc Nyatoh/Maple set-in neck
- 20 frets
- Spruce top/Flamed Maple back & sides
- Bound Macassar Ebony fretboard w/Acrylic & Abalone block inlay
- Medium frets w/Artstar fret edge treatment
- Bone nut
- Max body thickness: 3 5/8"/Width at lower bout: 15 3/4"
- Super 58 (H) neck pickup
- Super 58 (H) bridge pickup
- Gibraltar Artist bridge
- VT06 tailpiece
- Chrome hardware
- Hardshell case included



RCR
(Resonant Cherry Red)

¥154,000 (税抜価格 ¥140,000)

ASV103

- ASV Artstar 3pc Nyatoh/Maple set-in neck
- 22 frets
- Spruce top/Flamed Maple back & sides
- Bound Macassar Ebony fretboard w/Acrylic block inlay
- Medium frets w/Artstar fret edge treatment
- Bone nut
- Max body thickness: 2 5/8"/Width at lower bout: 15 3/4"
- Super 58 (H) neck pickup
- Super 58 (H) bridge pickup
- Gibraltar Artist bridge
- Quik Change III tailpiece
- Chrome hardware
- Hardshell case included



RNT
(Resonant Natural)

SPOT MODEL

¥165,000 (税抜価格 ¥150,000)

ASV113

- ASV Artstar 3pc Nyatoh/Maple set-in neck
- 22 frets
- Flamed Maple top/back/sides
- Bound Macassar Ebony fretboard w/Acrylic & Abalone block inlay
- Medium frets w/Artstar fret edge treatment
- Bone nut
- Max body thickness: 2 5/8"/Width at lower bout: 15 3/4"
- Super 58 (H) neck pickup
- Super 58 (H) bridge pickup
- Gibraltar Artist bridge
- Quik Change III tailpiece
- Chrome hardware
- Hardshell case included



Artcore Expressionist

DBS
(Dark Brown Sunburst)

¥110,000 (税抜価格 ¥100,000)

AG95QA

- AG Expressionist 3pc Nyatoh/Maple set-in neck
- 22 frets
- Quilted Ash top/back/sides
- Bound Macassar Ebony fretboard w/Acrylic block inlay
- Medium frets
- Max body thickness: 3 5/8"/Width at lower bout: 14 1/2"
- Super 58 (H) neck pickup
- Super 58 (H) bridge pickup
- Gibraltar Performer bridge
- VT06 tailpiece
- Gold hardware



Artcore Expressionist

NT
(Natural)

SPOT MODEL

¥110,000 (税抜価格 ¥100,000)

AS93ZW

- AS Expressionist 3pc Nyatoh/Maple set-in neck
- 22 frets
- Zebrawood top/back/sides
- Bound Macassar Ebony fretboard w/Acrylic block inlay
- Medium frets
- Max body thickness: 2 5/8"/Width at lower bout: 15 3/4"
- Super 58 (H) neck pickup
- Super 58 (H) bridge pickup
- Gibraltar Performer bridge
- Quik Change III tailpiece
- Gold hardware

Artcore Expressionist

New Model



Artcore Expressionist

BS
(Brown Sunburst)

SPOT MODEL

¥104,500 (税抜価格 ¥95,000)

AF95

- AF Expressionist 3pc Nyatoh/Maple set-in neck
- 20 frets
- Spruce top/Linden back & sides
- Bound Macassar Ebony fretboard w/Acrylic block inlay
- Medium frets
- Max body thickness: 3 5/8"/Width at lower bout: 15 3/4"
- Super 58 (H) neck pickup
- Super 58 (H) bridge pickup
- Walnut bridge
- VT14 tailpiece w/AFC wood cover
- Gold hardware



Artcore Expressionist

AYS
(Antique Yellow Sunburst)

¥110,000 (税抜価格 ¥100,000)

AF95FM

- AF Expressionist 3pc Nyatoh/Maple set-in neck
- 20 frets
- Flamed Maple top/back/sides
- Bound Macassar Ebony fretboard w/Acrylic block inlay
- Medium frets
- Max body thickness: 3 5/8"/Width at lower bout: 15 3/4"
- Super 58 (H) neck pickup
- Super 58 (H) bridge pickup
- Gibraltar Performer bridge
- VT06 tailpiece
- Gold hardware



Artcore Expressionist

TCD
(Transparent Cherry Red)

VLS
(Violin Sunburst)

SPOT MODEL

¥110,000 (税抜価格 ¥100,000)

AS93FM

- AS Expressionist 3pc Nyatoh/Maple set-in neck
- 22 frets
- Flamed Maple top/back/sides
- Bound Macassar Ebony fretboard w/Acrylic block inlay
- Medium frets
- Max body thickness: 2 5/8"/Width at lower bout: 15 3/4"
- Super 58 (H) neck pickup
- Super 58 (H) bridge pickup
- Gibraltar Performer bridge
- Quik Change III tailpiece
- Gold hardware

Left-handed

Artcore Expressionist

VLS
(Violin Sunburst)



¥121,000 (税抜価格 ¥110,000)

AS93FML

- AS Expressionist 3pc Nyatoh/Maple set-in neck
- 22 frets
- Flamed Maple top/back/sides
- Bound Macassar Ebony fretboard w/Acrylic block inlay
- Medium frets
- Max body thickness: 2 5/8"/Width at lower bout: 15 3/4"
- Super 58 (H) neck pickup
- Super 58 (H) bridge pickup
- Gibraltar Performer bridge
- Quik Change III tailpiece
- Gold hardware



Artcore Expressionist

AM93ME

- AM Expressionist 3pc Nyatoh/Maple set-in neck
- 22 frets
- Macassar Ebony top/back/sides
- Bound Macassar Ebony fretboard w/Acrylic block inlay
- Medium frets
- Max body thickness: 2 5/8"/Width at lower bout: 14 1/2"
- Super 58 (H) neck pickup
- Super 58 (H) bridge pickup
- Gibraltar Performer bridge
- Quik Change III tailpiece
- Gold hardware

NT
(Natural)**SPOT MODEL**

¥110,000 (税抜価格 ¥100,000)



Artcore Expressionist

AM93QM

- AM Expressionist 3pc Nyatoh/Maple set-in neck
- 22 frets
- Quilted Maple top/back/sides
- Bound Macassar Ebony fretboard w/Acrylic block inlay
- Medium frets
- Max body thickness: 2 5/8"/Width at lower bout: 14 1/2"
- Super 58 (H) neck pickup
- Super 58 (H) bridge pickup
- Gibraltar Performer bridge
- Quik Change III tailpiece
- Gold hardware

JBB

(Jet Blue Burst)

¥110,000 (税抜価格 ¥100,000)

New Model

Artcore Expressionist

AMH90

- AM Expressionist 3pc Nyatoh/Maple set-in neck
- 22 frets
- Linden top/back/sides
- Bound Macassar Ebony fretboard w/Abalone dot inlay
- Medium frets
- Max body thickness: 2 5/8"/Width at lower bout: 14 1/2"
- Super 58 (H) neck pickup
- Super 58 (H) bridge pickup
- Tri-sound switch for neck pickup
- Gibraltar Performer bridge
- VT06 tailpiece
- Gold hardware

BK

(Black)

CRF

(Cherry Red Flat)

SPOT MODEL

¥110,000 (税抜価格 ¥100,000)

Artcore

**BS**

(Brown Sunburst)

¥79,200 (税抜価格 ¥72,000)

AF75

- AF Artcore Nyatoh set-in neck
- 20 frets
- Linden top/back/sides
- Bound Walnut fretboard w/Acrylic block inlay
- Medium frets
- Max body thickness: 3 5/8"/Width at lower bout: 15 3/4"
- Classic Elite (H) neck pickup
- Classic Elite (H) bridge pickup
- Gibraltar Performer bridge
- VT60 tailpiece
- Chrome hardware

**BS**

(Brown Sunburst)

¥79,200 (税抜価格 ¥72,000)

AG75

- AG Artcore Nyatoh set-in neck
- 22 frets
- Linden top/back/sides
- Bound Walnut fretboard w/Acrylic block inlay
- Medium frets
- Max body thickness: 3 5/8"/Width at lower bout: 14 1/2"
- Classic Elite (H) neck pickup
- Classic Elite (H) bridge pickup
- Gibraltar Performer bridge
- VT60 tailpiece
- Chrome hardware

**TCD**

(Transparent Cherry Red)

¥79,200 (税抜価格 ¥72,000)

AS73

- AS Artcore Nyatoh set-in neck
- 22 frets
- Linden top/back/sides
- Bound Walnut fretboard w/Acrylic block inlay
- Medium frets
- Max body thickness: 2 5/8"/Width at lower bout: 15 3/4"
- Classic Elite (H) neck pickup
- Classic Elite (H) bridge pickup
- Gibraltar Performer bridge
- Quik Change III tailpiece
- Chrome hardware

**RGF**

(Rose Gold Metallic Flat)

SPOT MODEL

¥84,700 (税抜価格 ¥77,000)

AS73G

- AS Artcore Nyatoh set-in neck
- 22 frets
- Linden top/back/sides
- Bound Walnut fretboard w/Acrylic block inlay
- Medium frets
- Max body thickness: 2 5/8"/Width at lower bout: 15 3/4"
- Classic Elite (H) neck pickup
- Classic Elite (H) bridge pickup
- Gibraltar Performer bridge
- Quik Change III tailpiece
- Gold hardware



Signature Models

Gerald Veasley 6-STRING



AM
(Amber)

受注生産品 ¥935,000 (税抜価格 ¥850,000)

GVB1006

MADE IN JAPAN

- GVB 3pc Maple/Wenge neck
- Figured Maple top/Alder body
- Rosewood fretboard w/Abalone oval inlay
- Medium frets w/Prestige fret edge treatment
- Graph Tech® BLACK TUSQ XL® nut
- Bartolini® P45C-B neck pickup
- Bartolini® P45C-T bridge pickup
- Aguilar® OBP-3 preamp
- Mid frequency switch on mid control (push/pull)
- MR4 bridge (14mm string spacing)
- Cosmo black hardware
- String Gauge: .030/.040/.060/.080/.100/.120
- Hardshell case included

Gary Willis 5-STRING Fretless



NTF
(Natural Flat)

受注生産品 ¥671,000 (税抜価格 ¥610,000)

GWB1005

MADE IN JAPAN

- GWB 3pc Maple neck
- Swamp Ash body
- Ebony fingerboard w/Off-set white dot inlay
- Bartolini® GWB bridge pickup
- Bartolini® NTBT 2-band EQ
- EQ bypass switch (push/pull)
- Std. bridge (16.5mm string spacing)
- Black hardware
- String Gauge: .045/.065/.085/.105/.135
- Hardshell case included

Stephen 'Thundercat' Bruner 6-STRING



ALM
(Autumn Leaf Burst Matte)

受注生産品 ¥1,320,000 (税抜価格 ¥1,200,000)

TCB1006

MADE IN JAPAN

- TCB 5pc Maple/Purpleheart set-in neck
- 24 frets
- Quilted Maple top/Curly Maple back/Curly Maple body
- Bound Rosewood fretboard w/Acrylic block inlay
- Jumbo frets w/Prestige fret edge treatment
- EMG® 45HZ neck pickup
- EMG® 45HZ bridge pickup
- Graph Tech Ghost® modular pickup system
- Piezo/Mix/Magnetic pickup selector switch, MIDI program
- Up/Down switch, Mid/Dark EQ selector switch
- Hipshot A style bridge (19mm string spacing)
- Gold hardware
- Hipshot Ultralite machine heads
- String Gauge: .029/.049/.069/.089/.109/.128
- Hardshell case included

Adam Nitti 5-STRING



Premium
TWB
(Transparent Wine Red Burst)
SPOT MODEL

受注生産品 ¥330,000 (税抜価格 ¥300,000)

ANB205

- ANB5 3pc Maple neck w/KTS™ TITANIUM rods
- Ash body
- Maple fretboard w/Black rectangle inlay
- Medium frets w/Premium fret edge treatment
- Graph Tech® BLACK TUSQ XL® nut
- Bartolini® 59CJD-S3 neck pickup
- Bartolini® 59CJD-L3 bridge pickup
- Bartolini® NTMB+F ANB Custom 3-band EQ
- 3-way Mid frequency switch
- Hipshot A style bridge (18mm string spacing)
- Black hardware
- String Gauge: .045/.065/.085/.105/.130
- Gig bag included

Fieldy (Korn) 5-STRING



BKF
(Black Flat)

¥209,000 (税抜価格 ¥190,000)

K5

- K5 5pc Maple/Walnut neck
- Nyatoh body
- Rosewood fretboard w/K5 special inlay
- Medium frets
- IBZ ADX5N neck pickup
- IBZ ADX5B bridge pickup
- Vari-mid 3-band EQ
- EB-7 bridge (16.5mm string spacing)
- Black hardware
- Hipshot machine heads
- String Gauge: .045/.065/.085/.105/.130

Sharlee D'Angelo (Arch Enemy)



PW
(Pearl White)
SPOT MODEL

受注生産品 ¥165,000 (税抜価格 ¥150,000)

SDB3

- SDB 5pc Maple/Walnut neck
- Nyatoh body
- Bound Rosewood fretboard w/Acrylic iron cross inlay
- Medium frets
- PFR-N4(Black Pole Piece) neck pickup
- PFR-B4(Black Pole Piece) bridge pickup
- Ibanez Custom Electronics 2-band EQ
- MR4 bridge (19mm string spacing)
- Cosmo black hardware
- Factory Tuning: 1D#,2A#,3F,4C
- String Gauge: .060/.080/.100/.120

Ibanez Bass Workshop



DEF
(Dragon Eye Burst Flat)

SPOT MODEL

¥209,000 (税抜価格 ¥190,000)

EHB1500

- EHB4 9pc Panga Panga/Walnut neck w/Graphite reinforcement rods
- Poplar Burl top/Selected light weight African Mahogany body
- Bound Panga Panga fretboard w/Abalone off-set dot inlay
- Medium Stainless Steel frets
- Nordstrand™ Custom Big Split neck pickup
- Nordstrand™ Custom Big Split bridge pickup
- Vari-mid 3-band EQ
- EQ bypass switch (passive tone control on treble pot)
- MR5HS bridge (19mm string spacing)
- Black hardware
- Ibanez custom headpieces
- Schaller S-Locks strap lock pins
- Luminescent side dot inlay
- Gig bag included

5-STRING



DEF
(Dragon Eye Burst Flat)

SPOT MODEL



PLF
(Pacific Blue Burst Flat)

SPOT MODEL

¥225,500 (税抜価格 ¥205,000)

EHB1505

- EHB5 9pc Panga Panga/Walnut neck w/Graphite reinforcement rods
- Poplar Burl top/Selected light weight African Mahogany body
- Bound Panga Panga fretboard w/Abalone off-set dot inlay
- Medium Stainless Steel frets
- Nordstrand™ Custom Big Split neck pickup
- Nordstrand™ Custom Big Split bridge pickup
- Vari-mid 3-band EQ
- EQ bypass switch (passive tone control on treble pot)
- MR5HS bridge (18mm string spacing)
- Black hardware
- Ibanez custom headpieces
- Schaller S-Locks strap lock pins
- Luminescent side dot inlay
- Gig bag included

5-STRING Multi Scale



PLF
(Pacific Blue Burst Flat)

SPOT MODEL

¥238,700 (税抜価格 ¥217,000)

EHB1505MS

- EHB5 9pc Panga Panga/Walnut neck w/Graphite reinforcement rods
- 889mm/35" scale at 5th string, 838mm/33" scale at 1st string
- Poplar Burl top/Selected light weight African Mahogany body
- Bound Panga Panga fretboard w/Abalone off-set dot inlay
- Medium Stainless Steel frets
- Nordstrand™ Custom Big Split neck pickup
- Nordstrand™ Custom Big Split bridge pickup
- Vari-mid 3-band EQ
- EQ bypass switch (passive tone control on treble pot)
- MR5HS bridge (18mm string spacing)
- Black hardware
- Ibanez custom headpieces
- Schaller S-Locks strap lock pins
- Luminescent side dot inlay
- Gig bag included

6-STRING Multi Scale



BIF
(Black Ice Flat)

SPOT MODEL

¥249,700 (税抜価格 ¥227,000)

EHB1506MS

- EHB6 9pc Panga Panga/Walnut neck w/Graphite reinforcement rods
- 889mm/35" scale at 6th string, 825.5mm/32.5" scale at 1st string
- Poplar Burl top/Selected light weight African Mahogany body
- Bound Panga Panga fretboard w/Abalone off-set dot inlay
- Medium Stainless Steel frets
- Nordstrand™ Custom Big Split neck pickup
- Nordstrand™ Custom Big Split bridge pickup
- Vari-mid 3-band EQ
- EQ bypass switch (passive tone control on treble pot)
- MR5HS bridge (17mm string spacing)
- Black hardware
- Ibanez custom headpieces
- Schaller S-Locks strap lock pins
- Luminescent side dot inlay
- Gig bag included



PWM
(Pearl White Matte)

SPOT MODEL

¥152,900 (税抜価格 ¥139,000)

EHB1000

- EHB4 5pc Roasted Maple/Walnut neck w/Graphite reinforcement rods
- American Basswood body
- Roasted Birdseye Maple fretboard w/Abalone off-set dot inlay
- Medium Stainless Steel frets
- Bartolini® BH2 neck pickup
- Bartolini® BH2 bridge pickup
- Vari-mid 3-band EQ
- EQ bypass switch (passive tone control on treble pot)
- MR5HS bridge (19mm string spacing)
- Black hardware
- Ibanez custom headpieces
- Schaller S-Locks strap lock pins
- Luminescent side dot inlay
- Gig bag included



5-STRING



BKF
(Black Flat)
SPOT MODEL

¥159,500 (税抜価格 ¥145,000)

EHB1005

- EHB5 5pc Roasted Maple/Walnut neck w/Graphite reinforcement rods
- American Basswood body
- Roasted Birdseye Maple fretboard w/Abalone off-set dot inlay
- Medium Stainless Steel frets
- Bartolini® BH2 neck pickup
- Bartolini® BH2 bridge pickup
- Vari-mid 3-band EQ
- EQ bypass switch (passive tone control on treble pot)
- MR5HS bridge (18mm string spacing)
- Black hardware
- Ibanez custom headpieces
- Schaller S-Locks strap lock pins
- Luminescent side dot inlay
- Gig bag included

5-STRING Multi Scale



BKF
(Black Flat)
SPOT MODEL

SFM
(Sea Foam Green Matte)
SPOT MODEL

¥173,250 (税抜価格 ¥157,500)

EHB1005MS

- EHB5 5pc Roasted Maple/Walnut neck w/Graphite reinforcement rods
- 889mm/35" scale at 5th string, 838mm/33" scale at 1st string
- American Basswood body
- Roasted Birdseye Maple fretboard w/Abalone off-set dot inlay
- Medium Stainless Steel frets
- Bartolini® BH2 neck pickup
- Bartolini® BH2 bridge pickup
- Vari-mid 3-band EQ
- EQ bypass switch (passive tone control on treble pot)
- MR5HS bridge (18mm string spacing)
- Black hardware
- Ibanez custom headpieces
- Schaller S-Locks strap lock pins
- Luminescent side dot inlay
- Gig bag included

New Model Left-handed 5-STRING Multi Scale



SFM
(Sea Foam Green Matte)
SPOT MODEL

¥184,800 (税抜価格 ¥168,000)

EHB1005MSL

- EHB5 5pc Roasted Maple/Walnut neck w/Graphite reinforcement rods
- 889mm/35" scale at 5th string, 838mm/33" scale at 1st string
- American Basswood body
- Roasted Birdseye Maple fretboard w/Abalone off-set dot inlay
- Medium Stainless Steel frets
- Bartolini® BH2 neck pickup
- Bartolini® BH2 bridge pickup
- Vari-mid 3-band EQ
- EQ bypass switch (passive tone control on treble pot)
- MR5HS bridge (18mm string spacing)
- Black hardware
- Ibanez custom headpieces
- Schaller S-Locks strap lock pins
- Luminescent side dot inlay
- Gig bag included

New Model



PMM
(Pink Gold Metallic Matte)
SPOT MODEL

SFM
(Sea Foam Green Matte)
SPOT MODEL

¥152,900 (税抜価格 ¥139,000)

EHB1000S

- EHB4 5pc Roasted Maple/Walnut neck w/Graphite reinforcement rods
- 762mm/30" scale
- American Basswood body
- Roasted Birdseye Maple fretboard w/Abalone off-set dot inlay
- Medium Stainless Steel frets
- Bartolini® BH2 neck pickup
- Bartolini® BH2 bridge pickup
- Vari-mid 3-band EQ
- EQ bypass switch (passive tone control on treble pot)
- MR5HS bridge (19mm string spacing)
- Black hardware
- Ibanez custom headpieces
- Schaller S-Locks strap lock pins
- Luminescent side dot inlay
- Gig bag included

New Model 5-STRING Multi Scale



EMM
(Emerald Green Metallic Matte)
SPOT MODEL

¥173,250 (税抜価格 ¥157,500)

EHB1005SMS

- EHB5 5pc Roasted Maple/Walnut neck w/Graphite reinforcement rods
- 812mm/32" scale at 5th string, 762mm/30" scale at 1st string
- American Basswood body
- Roasted Birdseye Maple fretboard w/Abalone off-set dot inlay
- Medium Stainless Steel frets
- Bartolini® BH2 neck pickup
- Bartolini® BH2 bridge pickup
- Vari-mid 3-band EQ
- EQ bypass switch (passive tone control on treble pot)
- MR5HS bridge (18mm string spacing)
- Black hardware
- Ibanez custom headpieces
- Schaller S-Locks strap lock pins
- Luminescent side dot inlay
- Gig bag included

Fretless



MOB
(Mahogany Oil Burst)

BUL
(Black Ice Burst Low Gloss)
SPOT MODEL NEW FINISH

OPEN PRICE

UB804

- UB4 5pc Maple/Walnut neck-through
- Maple wing body
- Jatoba fingerboard w/White dot inlay
- Piezo active tone control
- Custom AeroSilk MR5 bridge (30mm string spacing)
- Black hardware
- TAMA® Roadpro stand included
- Gig bag included

5-STRING Multi Scale



DTW
(Deep Twilight)

¥159,500 (税抜価格 ¥145,000)

SRMS805

- SRMS5 for Multi Scale 5pc Jatoba/Walnut neck
- 901.7mm/35.5" scale at 5th string, 864mm/34" scale at 1st string
- Poplar Burl top/Okoume body
- Bound Panga Panga fretboard w/Acrylic special inlay
- Medium frets
- Bartolini® BH2 neck pickup
- Bartolini® BH2 bridge pickup
- Ibanez Custom Electronics 3-band EQ
- EQ bypass switch (passive tone control on treble pot)
- 3-way Mid frequency switch
- MR5S bridge (16.5mm string spacing)
- Black hardware
- Factory Tuning: 1G,2D,3A,4E,5B
- String Gauge: .045/.065/.080/.100/.130

6-STRING Multi Scale



BTT
(Brown Topaz Burst)

¥170,500 (税抜価格 ¥155,000)

SRMS806

- SRMS6 for Multi Scale 5pc Jatoba/Walnut neck
- 901.7mm/35.5" scale at 6th string, 854.7mm/33.6" scale at 1st string
- Poplar Burl top/Okoume body
- Bound Panga Panga fretboard w/Acrylic special inlay
- Medium frets
- Bartolini® BH2 neck pickup
- Bartolini® BH2 bridge pickup
- Ibanez Custom Electronics 3-band EQ
- EQ bypass switch (passive tone control on treble pot)
- 3-way Mid frequency switch
- MR5S bridge (16.5mm string spacing)
- Black hardware
- Factory Tuning: 1C,2G,3D,4A,5E,6B
- String Gauge: .032/.045/.065/.080/.100/.130

Fretless



BBF
(Brown Burst Flat)

¥132,000 (税抜価格 ¥120,000)

SRF700

- SRF4 5pc Maple/Walnut neck-through
- Okoume wing body
- Bound Panga Panga fretboard
- Bartolini® MK-1 neck pickup
- Bartolini® MK-1 bridge pickup
- Ibanez 2-band EQ w/Piezo active tone control
- Custom bridge for AeroSilk Piezo system (19mm string spacing)
- Cosmo black hardware
- Factory Tuning: 1G,2D,3A,4E
- String Gauge: .045/.065/.080/.100

5-STRING Fretless



BBF
(Brown Burst Flat)

¥143,000 (税抜価格 ¥130,000)

SRF705

- SRF5 5pc Maple/Walnut neck-through
- Okoume wing body
- Bound Panga Panga fretboard
- Bartolini® MK-1 neck pickup
- Bartolini® MK-1 bridge pickup
- Ibanez 2-band EQ w/Piezo active tone control
- Custom bridge for AeroSilk Piezo system (16.5mm string spacing)
- Cosmo black hardware
- Factory Tuning: 1G,2D,3A,4E,5B
- String Gauge: .045/.065/.080/.100/.132

Fretless



NNF
(Natural Browned Burst Flat)

¥115,500 (税抜価格 ¥105,000)

SRH500F

- SRH4 5pc Jatoba/Walnut neck
- Spruce top/Okoume body
- Bound Panga Panga fretboard w/Off-set white dot inlay
- Piezo active tone control
- Custom bridge for AeroSilk Piezo system (19mm string spacing)
- Black hardware
- Factory Tuning: 1G,2D,3A,4E
- String Gauge: .045/.065/.080/.100

5-STRING Fretless



NNF
(Natural Browned Burst Flat)

¥126,500 (税抜価格 ¥115,000)

SRH505F

- SRH5 5pc Jatoba/Walnut neck
- Spruce top/Okoume body
- Bound Panga Panga fretboard w/Off-set white dot inlay
- Piezo active tone control
- Custom bridge for AeroSilk Piezo system (16.5mm string spacing)
- Black hardware
- Factory Tuning: 1G,2D,3A,4E,5B
- String Gauge: .045/.065/.080/.100/.132

5-STRING



ABL
(Antique Brown Stained Low Gloss)

¥159,500 (税抜価格 ¥145,000)

SPOT MODEL

BTB845V

- BTB5 5pc Maple/Walnut neck-through w/Graphite reinforcement rods
- Zero fret
- 838mm/33" scale
- Poplar Burl top/Ash/Okoume wing body
- Rosewood fretboard w/Abalone dot inlay
- Medium Stainless Steel frets
- Bartolini® BH2 neck pickup
- Bartolini® BH2 bridge pickup
- Ibanez Custom Electronics 3-band EQ
- 3-way Mid frequency switch
- MR5S bridge (17mm string spacing)
- Black hardware
- Factory Tuning: 1C,2G,3D,4A,5E
- String Gauge: .032/.045/.065/.080/.100

6-STRING



ABL
(Antique Brown Stained Low Gloss)

¥170,500 (税抜価格 ¥155,000)

BTB846V

- BTB6 5pc Maple/Walnut neck-through w/Graphite reinforcement rods
- Zero fret
- 838mm/33" scale
- Poplar Burl top/Ash/Okoume wing body
- Rosewood fretboard w/Abalone dot inlay
- Medium Stainless Steel frets
- Bartolini® BH2 neck pickup
- Bartolini® BH2 bridge pickup
- Ibanez Custom Electronics 3-band EQ
- 3-way Mid frequency switch
- MR5S bridge (16.5mm string spacing)
- Black hardware
- Factory Tuning: 1C,2G,3D,4A,5E,6B
- String Gauge: .032/.045/.065/.080/.100/.130

SR



Prestige

OL
(Oil)

¥363,000 (税抜価格 ¥330,000)

SR5000 MADE IN JAPAN

- Atlas-4 HP 5pc Wenge/Walnut neck w/KTS™ TITANIUM rods
- Wenge top/African Mahogany/Wenge back body
- Wenge fretboard w/Mother of Pearl & Abalone oval inlay
- Medium frets w/Prestige fret edge treatment
- Graph Tech® BLACK TUSQ XL® nut
- Bartolini® Custom neck pickup
- Bartolini® Custom bridge pickup
- Ibanez Custom Electronics 3-band EQ
- EQ bypass switch (passive tone control on treble pot)
- 3-way Mid frequency switch
- MR5S bridge (19mm string spacing)
- Gold hardware
- Hardshell case included

5-STRING



Prestige

OL
(Oil)

¥374,000 (税抜価格 ¥340,000)

SR5005 MADE IN JAPAN

- Atlas-5 HP 5pc Wenge/Walnut neck w/KTS™ TITANIUM rods
- Wenge top/African Mahogany/Wenge back body
- Wenge fretboard w/Mother of Pearl & Abalone oval inlay
- Medium frets w/Prestige fret edge treatment
- Graph Tech® BLACK TUSQ XL® nut
- Bartolini® Custom neck pickup
- Bartolini® Custom bridge pickup
- Ibanez Custom Electronics 3-band EQ
- EQ bypass switch (passive tone control on treble pot)
- 3-way Mid frequency switch
- MR5S bridge (16.5mm string spacing)
- Gold hardware
- Hardshell case included

6-STRING



Prestige

OL
(Oil)

¥385,000 (税抜価格 ¥350,000)

SR5006 MADE IN JAPAN

- Atlas-6 HP 5pc Wenge/Walnut neck w/KTS™ TITANIUM rods
- Wenge top/African Mahogany/Wenge back body
- Wenge fretboard w/Mother of Pearl & Abalone oval inlay
- Medium frets w/Prestige fret edge treatment
- Graph Tech® BLACK TUSQ XL® nut
- Bartolini® Custom neck pickup
- Bartolini® Custom bridge pickup
- Ibanez Custom Electronics 3-band EQ
- EQ bypass switch (passive tone control on treble pot)
- 3-way Mid frequency switch
- MR5S bridge (16.5mm string spacing)
- Gold hardware
- Hardshell case included

New Model 5-STRING Multi Scale



Prestige

WK
(Weathered Black)

SPOT MODEL

¥396,000 (税抜価格 ¥360,000)

SRMS5 MADE IN JAPAN

- SRMS5 Prestige 5pc Wenge/Walnut neck
- 901.7mm/35.5" scale at 5th string, 864mm/34" scale at 1st string
- Ash body
- Wenge fretboard w/Acrylic special inlay
- Medium frets
- Graph Tech® BLACK TUSQ XL® nut
- Nordstrand™ Big Split Custom neck pickup
- Nordstrand™ Big Split Custom bridge pickup
- Ibanez Custom Electronics 3-band EQ
- EQ bypass switch (passive tone control on treble pot)
- 3-way Mid frequency switch
- MR5S bridge
- Black hardware
- Factory Tuning: 1G,2D,3A,4E,5B
- String Gauge: .045/.065/.080/.100/.130
- Hardshell case included

New Model 5-STRING



Premium

DEL
(Dragon Eye Burst Low Gloss)

SPOT MODEL

¥225,500 (税抜価格 ¥205,000)

SR1605DW

- Atlas-5 5pc Panga Panga/Purpleheart neck w/KTS™ TITANIUM rods
- Poplar Burl top/African Mahogany body
- Bound Panga Panga fretboard w/Abalone oval inlay
- Medium frets w/Premium fret edge treatment
- Graph Tech® BLACK TUSQ XL® nut
- Aguilar® DCB neck pickup
- Aguilar® DCB bridge pickup
- Ibanez Custom Electronics 3-band EQ
- EQ bypass switch (passive tone control on treble pot)
- 3-way Mid frequency switch
- MR5S bridge (18mm string spacing)
- Gold hardware
- Gig bag included

New Model



Premium

MGL
(Magic Wave Low Gloss)

SPOT MODEL

¥187,000 (税抜価格 ¥170,000)

SR1300SB

- Atlas-4 5pc Panga Panga/Purpleheart neck w/KTS™ TITANIUM rods
- Sandblasted Ash/Panga Panga top/African Mahogany body
- Bound Panga Panga fretboard w/Abalone oval inlay
- Medium frets w/Premium fret edge treatment
- Graph Tech® BLACK TUSQ XL® nut
- Nordstrand™ Big Break neck pickup
- Nordstrand™ Big Break bridge pickup
- Ibanez Custom Electronics 3-band EQ
- EQ bypass switch (passive tone control on treble pot)
- 3-way Mid frequency switch
- MR5S bridge (19mm string spacing)
- Black hardware
- Gig bag included

New Model 5-STRING



Premium

MGL
(Magic Wave Low Gloss)

SPOT MODEL

¥198,000 (税抜価格 ¥180,000)

SR1305SB

- Atlas-5 5pc Panga Panga/Purpleheart neck w/KTS™ TITANIUM rods
- Sandblasted Ash/Panga Panga top/African Mahogany body
- Bound Panga Panga fretboard w/Abalone oval inlay
- Medium frets w/Premium fret edge treatment
- Graph Tech® BLACK TUSQ XL® nut
- Nordstrand™ Big Break neck pickup
- Nordstrand™ Big Break bridge pickup
- Ibanez Custom Electronics 3-band EQ
- EQ bypass switch (passive tone control on treble pot)
- 3-way Mid frequency switch
- MR5S bridge (16.5mm string spacing)
- Black hardware
- Gig bag included



Premium

DWF
(Dual Shadow Burst Flat)

¥192,500 (税抜価格 ¥175,000)

SR1340B

- Atlas-4 5pc Panga Panga/Purpleheart neck w/KTS™ TITANIUM rods
- Ash/Panga Panga top/African Mahogany body
- Bound Panga Panga fretboard w/Abalone oval inlay
- Medium frets w/Premium fret edge treatment
- Graph Tech® BLACK TUSQ XL® nut
- Nordstrand™ Big Single neck pickup
- Nordstrand™ Big Single bridge pickup
- Ibanez Custom Electronics 3-band EQ
- EQ bypass switch (passive tone control on treble pot)
- 3-way Mid frequency switch
- MR5S bridge (19mm string spacing)
- Black hardware
- Gig bag included

5-STRING



Premium

DWF
(Dual Shadow Burst Flat)

¥203,500 (税抜価格 ¥185,000)

SR1345B

- Atlas-5 5pc Panga Panga/Purpleheart neck w/KTS™ TITANIUM rods
- Ash/Panga Panga top/African Mahogany body
- Bound Panga Panga fretboard w/Abalone oval inlay
- Medium frets w/Premium fret edge treatment
- Graph Tech® BLACK TUSQ XL® nut
- Nordstrand™ Big Single neck pickup
- Nordstrand™ Big Single bridge pickup
- Ibanez Custom Electronics 3-band EQ
- EQ bypass switch (passive tone control on treble pot)
- 3-way Mid frequency switch
- MR5S bridge (16.5mm string spacing)
- Black hardware
- Gig bag included

6-STRING



Premium

DWF
(Dual Shadow Burst Flat)

¥214,500 (税抜価格 ¥195,000)

SR1346B

- Atlas-6 5pc Panga Panga/Purpleheart neck w/KTS™ TITANIUM rods
- Ash/Panga Panga top/African Mahogany body
- Bound Panga Panga fretboard w/Abalone oval inlay
- Medium frets w/Premium fret edge treatment
- Graph Tech® BLACK TUSQ XL® nut
- Nordstrand™ Big Single neck pickup
- Nordstrand™ Big Single bridge pickup
- Ibanez Custom Electronics 3-band EQ
- EQ bypass switch (passive tone control on treble pot)
- 3-way Mid frequency switch
- MR5S bridge (16.5mm string spacing)
- Black hardware
- Gig bag included

New Model 5-STRING Multi Scale



BKF
(Black Flat)

¥143,000 (税抜価格 ¥130,000)

SRMS625EX

- SRMS5 for Multi Scale 5pc Maple/Walnut neck
- 901.7mm/35.5" scale at 5th string, 864mm/34" scale at 1st string
- Okoume body
- Ebonol fretboard
- Medium frets
- Bartolini® BH2 neck pickup
- Bartolini® BH2 bridge pickup
- Ibanez Custom Electronics 3-band EQ
- EQ bypass switch (passive tone control on treble pot)
- 3-way Mid frequency switch
- MR5 bridge (16.5mm string spacing)
- Black hardware

New Model



AST
(Antique Brown Stained Burst)

¥121,000 (税抜価格 ¥110,000)

SR600E

- SR4 5pc Jatoba/Walnut neck
- Ash body
- Rosewood fretboard w/Abalone oval inlay
- Medium frets
- Nordstrand™ Big Break neck pickup
- Nordstrand™ Big Break bridge pickup
- Ibanez Custom Electronics 3-band EQ
- EQ bypass switch (passive tone control on treble pot)
- 3-way Mid frequency switch
- Accu-cast B500 bridge (19mm string spacing)
- Black hardware

CTF
(Cosmic Blue Starburst Flat)

SPOT MODEL

New Model 5-STRING



BKT
(Black Stained Burst)

¥132,000 (税抜価格 ¥120,000)

SR605E

- SR5 5pc Jatoba/Walnut neck
- Ash body
- Rosewood fretboard w/Abalone oval inlay
- Medium frets
- Nordstrand™ Big Break neck pickup
- Nordstrand™ Big Break bridge pickup
- Ibanez Custom Electronics 3-band EQ
- EQ bypass switch (passive tone control on treble pot)
- 3-way Mid frequency switch
- Accu-cast B505 bridge (16.5mm string spacing)
- Black hardware

CTF
(Cosmic Blue Starburst Flat)

SPOT MODEL

New Model 6-STRING



CTF
(Cosmic Blue Starburst Flat)

¥143,000 (税抜価格 ¥130,000)

SR606E

- SR6 5pc Jatoba/Walnut neck
- Ash body
- Rosewood fretboard w/Abalone oval inlay
- Medium frets
- Nordstrand™ Big Break neck pickup
- Nordstrand™ Big Break bridge pickup
- Ibanez Custom Electronics 3-band EQ
- EQ bypass switch (passive tone control on treble pot)
- 3-way Mid frequency switch
- Accu-cast B506 bridge (16.5mm string spacing)
- Black hardware

SPOT MODEL



BM
(Brown Mahogany)

¥104,500 (税抜価格 ¥95,000)

SR500E

- SR4 5pc Jatoba/Walnut neck
- Okoume body
- Rosewood fretboard w/Abalone oval inlay
- Medium frets
- Bartolini® BH2 neck pickup
- Bartolini® BH2 bridge pickup
- Ibanez Custom Electronics 3-band EQ
- EQ bypass switch (passive tone control on treble pot)
- 3-way Mid frequency switch
- Accu-cast B500 bridge (19mm string spacing)
- Black hardware

5-STRING



BM
(Brown Mahogany)

¥115,500 (税抜価格 ¥105,000)

SR505E

- SR5 5pc Jatoba/Walnut neck
- Okoume body
- Rosewood fretboard w/Abalone oval inlay
- Medium frets
- Bartolini® BH2 neck pickup
- Bartolini® BH2 bridge pickup
- Ibanez Custom Electronics 3-band EQ
- EQ bypass switch (passive tone control on treble pot)
- 3-way Mid frequency switch
- Accu-cast B505 bridge (16.5mm string spacing)
- Black hardware

Left-handed 5-STRING



BM
(Brown Mahogany)
SPOT MODEL

¥126,500 (税抜価格 ¥115,000)

SR505EL

- SR5 5pc Jatoba/Walnut neck
- Okoume body
- Rosewood fretboard w/Abalone oval inlay
- Medium frets
- Bartolini® BH2 neck pickup
- Bartolini® BH2 bridge pickup
- Ibanez Custom Electronics 3-band EQ
- EQ bypass switch (passive tone control on treble pot)
- 3-way Mid frequency switch
- Accu-cast B505 bridge (16.5mm string spacing)
- Black hardware

6-STRING



BM
(Brown Mahogany)

¥126,500 (税抜価格 ¥115,000)

SR506E

- SR6 5pc Jatoba/Walnut neck
- Okoume body
- Rosewood fretboard w/Abalone oval inlay
- Medium frets
- Bartolini® BH2 neck pickup
- Bartolini® BH2 bridge pickup
- Ibanez Custom Electronics 3-band EQ
- EQ bypass switch (passive tone control on treble pot)
- 3-way Mid frequency switch
- Accu-cast B506 bridge (16.5mm string spacing)
- Black hardware



CCB
(Charred Champagne Burst)
SPOT MODEL



CUB
(Cerulean Aura Burst)
SPOT MODEL



IPT
(Iron Pewter)



NST
(Night Snow Burst)
SPOT MODEL



PGM
(Pink Gold Metallic)
SPOT MODEL NEW FINISH



PW
(Pearl White)

¥60,500 (税抜価格 ¥55,000)

SR300E

- SR4 5pc Maple/Walnut neck
- Nyatoh body
- Jatoba fretboard w/White dot inlay
- Medium frets
- PowerSpan Dual Coil neck pickup
- PowerSpan Dual Coil bridge pickup
- Ibanez Custom Electronics 3-band EQ
- 3-way Power Tap switch
- Accu-cast B120 bridge (19mm string spacing)
- Cosmo black hardware

5-STRING



CUB
(Cerulean Aura Burst)

SPOT MODEL

PW
(Pearl White)

RBM
(Root Beer Metallic)

NEW FINISH

¥71,500 (税抜価格 ¥65,000)

SR305E

- SR5 5pc Maple/Walnut neck
- Nyatoh body
- Jatoba fretboard w/White dot inlay
- Medium frets
- PowerSpan Dual Coil neck pickup
- PowerSpan Dual Coil bridge pickup
- Ibanez Custom Electronics 3-band EQ
- 3-way Power Tap switch
- Accu-cast B125 bridge (16.5mm string spacing)
- Cosmo black hardware

BTB

5-STRING



Premium

BIL
(Black Ice Low Gloss)

SPOT MODEL

¥242,000 (税抜価格 ¥220,000)

BTB1935

- BTB5 7pc Panga Panga/Purpleheart neck-through w/ Graphite reinforcement rods
- Zero fret
- 889mm/35" scale
- Curly Maple/Walnut top/African Mahogany wing/Curly Maple/Walnut back body
- Bound Panga Panga fretboard w/Abalone off-set dot inlay
- Medium Stainless Steel frets w/Premium fret edge treatment
- Aguilar® DCB neck pickup
- Aguilar® DCB bridge pickup
- Ibanez Custom Electronics 3-band EQ
- EQ bypass switch (passive tone control on treble pot)
- 3-way Mid frequency switch
- MR5S bridge (19mm string spacing)
- Gold hardware
- Gig bag included

6-STRING



Premium

SFL
(Sunset Fade Low Gloss)

SPOT MODEL

¥253,000 (税抜価格 ¥230,000)

BTB1936

- BTB6 7pc Panga Panga/Purpleheart neck-through w/ Graphite reinforcement rods
- Zero fret
- 889mm/35" scale
- Curly Maple/Walnut top/African Mahogany wing/Curly Maple/Walnut back body
- Bound Panga Panga fretboard w/Abalone off-set dot inlay
- Medium Stainless Steel frets w/Premium fret edge treatment
- Aguilar® DCB neck pickup
- Aguilar® DCB bridge pickup
- Ibanez Custom Electronics 3-band EQ
- EQ bypass switch (passive tone control on treble pot)
- 3-way Mid frequency switch
- MR5S bridge (17mm string spacing)
- Gold hardware
- Gig bag included

New Model 5-STRING



Premium

NDL
(Natural Shadow Low Gloss)

¥247,500 (税抜価格 ¥225,000)

BTB1835

- BTB5 9pc Maple/Bubinga/Panga Panga neck-through w/ Graphite reinforcement rods
- Zero fret
- 889mm/35" scale
- Bubinga top/Ash wing/Bubinga back body
- Bound Panga Panga fretboard w/Abalone off-set dot inlay
- Medium Stainless Steel frets w/Premium fret edge treatment
- Aguilar® DCB neck pickup
- Aguilar® DCB bridge pickup
- Ibanez Custom Electronics 3-band EQ
- EQ bypass switch (passive tone control on treble pot)
- 3-way Mid frequency switch
- MR5S bridge (19mm string spacing)
- Gold hardware
- Gig bag included

New Model 6-STRING



Premium

NDL
(Natural Shadow Low Gloss)

SPOT MODEL

¥258,500 (税抜価格 ¥235,000)

BTB1836

- BTB6 9pc Maple/Bubinga/Panga Panga neck-through w/ Graphite reinforcement rods
- Zero fret
- 889mm/35" scale
- Bubinga top/Ash wing/Bubinga back body
- Bound Panga Panga fretboard w/Abalone off-set dot inlay
- Medium Stainless Steel frets w/Premium fret edge treatment
- Aguilar® DCB neck pickup
- Aguilar® DCB bridge pickup
- Ibanez Custom Electronics 3-band EQ
- EQ bypass switch (passive tone control on treble pot)
- 3-way Mid frequency switch
- MR5S bridge (17mm string spacing)
- Gold hardware
- Gig bag included

5-STRING



CBL
(Cerulean Blue Burst Low Gloss)

SPOT MODEL

¥154,000 (税抜価格 ¥140,000)

BTB845

- BTB5 5pc Maple/Walnut neck-through w/Graphite reinforcement rods
- Zero fret
- 889mm/35" scale
- Poplar Burl top/Ash/Okoume wing body
- Rosewood fretboard w/Abalone dot inlay
- Medium Stainless Steel frets
- Bartolini® BH2 neck pickup
- Bartolini® BH2 bridge pickup
- Ibanez Custom Electronics 3-band EQ
- 3-way Mid frequency switch
- MR5 bridge (19mm string spacing)
- Cosmo black hardware

6-STRING



CBL
(Cerulean Blue Burst Low Gloss)

SPOT MODEL

¥165,000 (税抜価格 ¥150,000)

BTB846

- BTB6 5pc Maple/Walnut neck-through w/Graphite reinforcement rods
- Zero fret
- 889mm/35" scale
- Poplar Burl top/Ash/Okoume wing body
- Rosewood fretboard w/Abalone dot inlay
- Medium Stainless Steel frets
- Bartolini® BH2 neck pickup
- Bartolini® BH2 bridge pickup
- Ibanez Custom Electronics 3-band EQ
- 3-way Mid frequency switch
- MR5 bridge (17mm string spacing)
- Cosmo black hardware

5-STRING



NTL
(Natural Low Gloss)

¥137,500 (税抜価格 ¥125,000)

BTB745

- BTB5 5pc Maple/Walnut neck-through w/Graphite reinforcement rods
- Zero fret
- 889mm/35" scale
- Walnut top/Ash/Okoume wing body
- Rosewood fretboard w/Abalone dot inlay
- Medium Stainless Steel frets
- Bartolini® BH2 neck pickup
- Bartolini® BH2 bridge pickup
- Ibanez Custom Electronics 3-band EQ
- 3-way Mid frequency switch
- MR5 bridge (19mm string spacing)
- Cosmo black hardware

6-STRING



NTL
(Natural Low Gloss)

¥148,500 (税抜価格 ¥135,000)

BTB746

- BTB6 5pc Maple/Walnut neck-through w/Graphite reinforcement rods
- Zero fret
- 889mm/35" scale
- Walnut top/Ash/Okoume wing body
- Rosewood fretboard w/Abalone dot inlay
- Medium Stainless Steel frets
- Bartolini® BH2 neck pickup
- Bartolini® BH2 bridge pickup
- Ibanez Custom Electronics 3-band EQ
- 3-way Mid frequency switch
- MR5 bridge (17mm string spacing)
- Cosmo black hardware

7-STRING



NTL
(Natural Low Gloss)

¥159,500 (税抜価格 ¥145,000)

BTB747

- BTB7 9pc Maple/Panga Panga/Walnut neck-through w/Graphite reinforcement rods
- Zero fret
- 889mm/35" scale
- Walnut top/Ash/Okoume wing body
- Rosewood fretboard w/Abalone dot inlay
- Medium Stainless Steel frets
- Bartolini® BH2 neck pickup
- Bartolini® BH2 bridge pickup
- Ibanez Custom Electronics 3-band EQ
- 3-way Mid frequency switch
- MR5 bridge (15.5mm string spacing)
- Cosmo black hardware
- Factory Tuning: 1F,2C,3G,4D,5A,6E,7B
- String Gauge: .020p/.032/.045/.065/.080/.100/.130

New Model 5-STRING



BKF
(Black Flat)

¥137,500 (税抜価格 ¥125,000)

BTB625EX

- BTB5 5pc Maple/Walnut neck-through w/Graphite reinforcement rods
- Zero fret
- 889mm/35" scale
- Okoume body
- Ebonol fretboard
- Medium Stainless Steel frets
- Bartolini® BH2 neck pickup
- Bartolini® BH2 bridge pickup
- Ibanez Custom Electronics 3-band EQ
- 3-way Mid frequency switch
- MR5 bridge (19mm string spacing)
- Black hardware

Talman Bass



SDL
(Soda Blue)



WNF
(Walnut Flat)

¥49,500 (税抜価格 ¥45,000)

TMB100

- TMB4 Maple neck
- Poplar body
- Jatoba fretboard w/White dot inlay
- Medium frets
- Dynamix P neck pickup
- Dynamix J bridge pickup
- Ibanez Custom Electronics 2-band EQ
- B10 bridge (19mm string spacing)
- Chrome hardware

5-STRING



MGR
(Mint Green)

SPOT MODEL

¥49,500 (税抜価格 ¥45,000)

TMB35

- TMB5 Maple neck
- 762mm/30" scale
- Poplar body
- Jatoba fretboard w/White dot inlay
- Medium frets
- Dynamix P neck pickup
- Dynamix J bridge pickup
- B15W bridge (18mm string spacing)
- Chrome hardware

Artcore



TKS
(Transparent Black Sunburst)

SPOT MODEL

¥107,800 (税抜価格 ¥98,000)

AFB200

- AFB4 3pc Nyatoh/Maple set-in neck
- 22 frets
- 770mm/30.3" scale
- Linden top/back/sides
- Bound Walnut fretboard w/White dot inlay
- Medium frets
- Max body thickness: 3 5/8"/Width at lower bout: 15 3/4"
- Classic Elite Bass neck pickup
- Classic Elite Bass bridge pickup
- ART-1 wooden bridge (19mm string spacing)
- FBT40 tailpiece
- Chrome hardware



NT
(Natural)
SPOT MODEL
¥94,600 (税抜価格 ¥86,000)

AGB200

- AGB4 3pc Nyatoh/Maple set-in neck
- 22 frets
- 770mm/30.3" scale
- Linden top/back/sides
- Bound Walnut fretboard w/White dot inlay
- Medium frets
- Max body thickness: 2 3/4"/Width at lower bout: 14 1/2"
- Classic Elite Bass neck pickup
- Classic Elite Bass bridge pickup
- Gibraltar III Bass bridge (19mm string spacing)
- Quik Change III Bass tailpiece
- Chrome hardware

GSR



TKS
(Transparent Black Sunburst)



TMS
(Transparent Marine Sunburst)



TRS
(Transparent Red Sunburst)



TYS
(Transparent Yellow Sunburst)

OPEN PRICE

GSR370

- GSR4 Maple neck
- Quilted Maple Art Grain top/Okoume body
- Purpleheart fretboard w/White dot inlay
- Medium frets
- Dynamix J neck pickup
- Dynamix J bridge pickup
- B10 bridge (19mm string spacing)
- Cosmo black hardware



BK
(Black)



CA
(Candy Apple)



JB
(Jewel Blue)



LBF
(Transparent Light Brown Flat)



PW
(Pearl White)



TFB
(Tri Fade Burst)

OPEN PRICE

GSR320

- GSR4 Maple neck
- Okoume body
- Purpleheart fretboard w/White dot inlay
- Medium frets
- Dynamix J neck pickup
- Dynamix J bridge pickup
- B10 bridge (19mm string spacing)
- Black hardware

5-STRING



BK
(Black)

OPEN PRICE

GSR205

- GSR5 Maple neck
- Poplar body
- Jatoba fretboard w/White dot inlay
- Medium frets
- Dynamix H neck pickup
- Dynamix H bridge pickup
- Phat II EQ
- B15 bridge (16.5mm string spacing)
- Chrome hardware

Signature Model

New Model Jon Gomm



(Black Satin Top, Natural High Gloss Back and Sides)

受注生産品 ¥495,000 (税抜価格 ¥450,000)



BSN

JGM10

- Asymmetrical Jumbo body
- 655mm/25 3/4" scale
- Thermo Aged™ Solid Sitka Spruce top
- Solid Pau Ferro back & sides
- African Mahogany/Pau Ferro 5pc neck (satin finish)
- Macassar Ebony fretboard & Macassar Ebony top loading bridge
- 45mm width nut
- Specially Designed Wooden rosette
- Macassar Ebony body binding with rounded body edge
- Bone nut & Compensated Bone saddle
- Chrome Die-cast tuners(18:1 gear ratio)
- Fishman® Rare Earth Mic Blend Active Soundhole & Tap pickup
- Fishman® PowerTap Earth Blend preamp
- Dual outputs (2 endpin jacks - 1 stereo/mono output capability built in (with strap button) - 1 mono flush mount)
- D'Addario® XTAPB1256 strings, String Gauge: .012/.016/.025/.035/.045/.056
- Factory Tuning: 1D,2A,3G,4D,5G,6C
- Thermo Aged™ Spruce Modified X-M Bracing
- Jumbo Stainless Steel frets
- Luminlay side dots
- Fiberglass case included

PA

New Model



(Natural Satin Top, Natural Low Gloss Back and Sides)

¥132,000 (税抜価格 ¥120,000)

NSL

PA300E

- Asymmetrical Jumbo body
- Solid German Spruce top
- Pau Ferro back & sides
- African Mahogany/Pau Ferro 5pc neck
- Macassar Ebony fretboard & Macassar Ebony top loading bridge
- Specially Designed Wooden rosette
- Flamed Maple body binding with rounded body edge
- Unbleached Oil-impregnated Bone nut & saddle
- Chrome Die-cast tuners(18:1 gear ratio)
- Ibanez AP11 Magnetic, T-bar Undersaddle & Contact pickup
- Ibanez Custom Electronics w/ Magnetic Pickup Volume, Undersaddle Pickup Volume and Contact Pickup Volume
- Dual Outputs (Mono Out / Stereo Out)
- D'Addario® XTAPB1356 strings
- Modified X-M Bracing
- Jumbo frets
- Gig bag included

New Model



(Natural Satin Top, Natural Low Gloss Back and Sides)

¥110,000 (税抜価格 ¥100,000)

NSL

SPOT MODEL

PA230E

- Asymmetrical Jumbo body
- Solid Cedar top
- Okoume back & sides
- African Mahogany/Pau Ferro 5pc neck
- Macassar Ebony fretboard & Macassar Ebony top loading bridge
- Specially Designed Wooden rosette
- Flamed Maple body binding with rounded body edge
- Unbleached Oil-impregnated Bone nut & saddle
- Chrome Die-cast tuners(18:1 gear ratio)
- Ibanez AP11 Magnetic, T-bar Undersaddle & Contact pickup
- Ibanez Custom Electronics w/ Magnetic Pickup Volume, Undersaddle Pickup Volume and Contact Pickup Volume
- Dual Outputs (Mono Out / Stereo Out)
- D'Addario® XTAPB1356 strings
- Modified X-M Bracing
- Jumbo frets
- Gig bag included



Jon Gomm
photo Tom Martin

AE



¥126,500 (税抜価格 ¥115,000)

LGS

(Natural Low Gloss)

SPOT MODEL

AE325

- AE body
- Solid Sitka Spruce top
- Flamed Okoume back & sides
- African Mahogany/Pau Ferro 5pc neck, Comfort Grip with Rounded Fretboard Edge
- Macassar Ebony fretboard & Macassar Ebony scalloped bridge
- 44mm width nut
- Specially designed Wooden Vine inlay
- Abalone and Wooden rosette with Soundhole binding
- Bone nut & Compensated Bone saddle
- Chrome Die-cast tuners(18:1 gear ratio)
- Ibanez AP11 Magnetic & T-bar Undersaddle pickup
- Ibanez Custom Electronics w/ Magnetic Pickup Volume and Undersaddle Pickup Volume
- Dual outputs (Mono Out / Stereo Out)
- Ibanez Advantage™ bridge pins
- D'Addario® XTAPB1152 strings
- X-M Bracing
- Jumbo frets
- Luminlay side dots

AE295

- AE body
- Solid Okoume top
- Okoume back & sides
- Nyatoh neck, Comfort Grip with Rounded Fretboard Edge
- Katalox fretboard & Katalox scalloped bridge
- 44mm width nut
- Specially designed Wooden Vine inlay
- Abalone and Wooden rosette
- Bone nut & Compensated Bone saddle
- Chrome Die-cast tuners(18:1 gear ratio)
- Ibanez AP11 Magnetic pickup
- Ibanez Custom Electronics w/ Volume and Tone Control
- Ibanez Advantage™ bridge pins
- D'Addario® XTAPB1152 strings
- X-M Bracing
- Jumbo frets

¥92,400 (税抜価格 ¥84,000)

LGS

(Natural Low Gloss)

Left-handed



¥104,500 (税抜価格 ¥95,000)

LGS

(Natural Low Gloss)

SPOT MODEL

AE295L

- AE body
- Solid Okoume top
- Okoume back & sides
- Nyatoh neck, Comfort Grip with Rounded Fretboard Edge
- Katalox fretboard & Katalox scalloped bridge
- 44mm width nut
- Specially designed Wooden Vine inlay
- Abalone and Wooden rosette
- Bone nut & Compensated Bone saddle
- Chrome Die-cast tuners(18:1 gear ratio)
- Ibanez AP11 Magnetic pickup
- Ibanez Custom Electronics w/ Volume and Tone Control
- Ibanez Advantage™ bridge pins
- D'Addario® XTAPB1152 strings
- X-M Bracing
- Jumbo frets



¥92,400 (税抜価格 ¥84,000)

LGS

(Natural Low Gloss)

AE275

- AE body
- Solid Sitka Spruce top
- Okoume back & sides
- Nyatoh neck, Comfort Grip with Rounded Fretboard Edge
- Katalox fretboard & Katalox scalloped bridge
- 44mm width nut
- Specially designed Wooden Vine inlay
- Abalone and Wooden rosette
- Bone nut & Compensated Bone saddle
- Chrome Die-cast tuners(18:1 gear ratio)
- Ibanez AP11 Magnetic pickup
- Ibanez Custom Electronics w/ Volume and Tone Control
- Ibanez Advantage™ bridge pins
- D'Addario® XTAPB1152 strings
- X-M Bracing
- Jumbo frets

Advanced Acoustic

New Model



LGS

(Natural Low Gloss)

SPOT MODEL

¥115,500 (税抜価格 ¥105,000)

AAD300CE

- Grand Dreadnought with Advanced Access Cutaway body
- Solid Sitka Spruce top
- Okoume back & sides
- Thermo Aged™ Nyatoh neck, Low Oval Grip with Rounded Fretboard Edge
- Macassar Ebony fretboard & Macassar Ebony scalloped bridge
- Maple Dot inlay
- Wooden rosette with Soundhole binding
- Bone nut & Compensated Bone saddle
- Chrome Die-cast tuners(18:1 gear ratio)
- Ibanez AP11 Magnetic & Contact pickup
- Ibanez Custom Electronics w/ Magnetic Pickup Volume and Contact Pickup Volume
- Dual outputs (Mono Out / Stereo Out)
- Ibanez Advantage™ bridge pins
- D'Addario® XTAPB1253 strings
- X-M Bracing
- Luminlay side dots

New Model



OPN

(Open Pore Natural)

¥55,000 (税抜価格 ¥50,000)

AAD140

- Grand Dreadnought body
- Solid Okoume top
- Okoume back & sides
- Thermo Aged™ Nyatoh neck, Low Oval Grip with Rounded Fretboard Edge
- Ovangkol fretboard & Ovangkol scalloped bridge
- Wooden multi rosette
- Chrome Die-cast tuners(18:1 gear ratio)
- Ibanez Advantage™ bridge pins
- D'Addario® XTAPB1253 strings
- X-M Bracing

New Model



OPN

(Open Pore Natural)

SPOT MODEL

¥55,000 (税抜価格 ¥50,000)

AAD100

- Grand Dreadnought body
- Solid Sitka Spruce top
- Okoume back & sides
- Thermo Aged™ Nyatoh neck, Low Oval Grip with Rounded Fretboard Edge
- Ovangkol fretboard & Ovangkol scalloped bridge
- Wooden multi rosette
- Chrome Die-cast tuners(18:1 gear ratio)
- Ibanez Advantage™ bridge pins
- D'Addario® XTAPB1253 strings
- X-M Bracing

Artwood Fingerstyle Collection



OPS

(Open Pore Semi-Gloss)

¥198,000 (税抜価格 ¥180,000)

AWFS580CE

- Cutaway Dreadnought (Shallower body depth) body
- Selected Solid Alpine Spruce top
- Solid Pau Ferro back & sides
- Thin C shape / African Mahogany/Pau Ferro 5pc neck
- Ebony fretboard & bridge
- 45mm width nut
- Abalone and Wooden rosette with Soundhole binding
- Flamed Maple body binding
- Unbleached Oil-impregnated Bone nut & saddle
- Gotoh® Chrome SG301 tuners(18:1 gear ratio)
- Ibanez T-bar Undersaddle & Block Contact pickup
- Ibanez DP1 preamp
- Dual outputs (Mono Out / Stereo Out)
- Ebony with abalone dot bridge pins
- D'Addario® XTAPB1253 strings
- Scalloped X bracing
- Hardshell case included



OPS

(Open Pore Semi-Gloss)

SPOT MODEL

¥198,000 (税抜価格 ¥180,000)

ACFS580CE

- Cutaway Grand Concert (Deeper body depth) body
- Selected Solid Alpine Spruce top
- Solid Pau Ferro back & sides
- Thin C shape / African Mahogany/Pau Ferro 5pc neck
- Ebony fretboard & bridge
- 45mm width nut
- Abalone and Wooden rosette with Soundhole binding
- Flamed Maple body binding
- Unbleached Oil-impregnated Bone nut & saddle
- Gotoh® Chrome SG301 tuners(18:1 gear ratio)
- Ibanez T-bar Undersaddle & Block Contact pickup
- Ibanez DP1 preamp
- Dual outputs (Mono Out / Stereo Out)
- Ebony with abalone dot bridge pins
- D'Addario® XTAPB1253 strings
- Scalloped X bracing
- Hardshell case included

Baritone



OPS

(Open Pore Semi-Gloss)

SPOT MODEL

¥132,000 (税抜価格 ¥120,000)

ACFS380BT

- Cutaway Grand Concert (Deeper body depth) body
- Solid Engelmann Spruce top
- Pau Ferro back & sides
- Thin C shape / African Mahogany/Pau Ferro 5pc neck
- Macassar Ebony fretboard & bridge
- 45mm width nut
- Wooden rosette with Soundhole binding
- Unbleached Oil-impregnated Bone nut & saddle
- Chrome Die-cast tuners (18:1 gear ratio)
- Ibanez T-bar Undersaddle & Block Contact pickup
- Ibanez DP1 preamp
- Dual Outputs (Mono Out / Stereo Out)
- Ebony bridge pins
- D'Addario® EXP™23 strings
- Factory Tuning: 1B,2F#,3D,4A,5E,6B
- Scalloped X bracing
- Gig bag included

Artwood Traditional Acoustic



OPN
(Open Pore Natural)

¥57,200 (税抜価格 ¥52,000)

AC340

- Grand Concert body
- 634mm/25" scale
- Solid Okoume top
- Okoume back & sides
- Nyatoh neck
- Ovangkol fretboard & Thermo Aged™ Ovangkol bridge
- 45mm width nut
- Bone nut & Compensated Bone saddle
- Chrome Die-cast tuners(18:1 gear ratio)
- Ibanez Advantage™ bridge pins
- D'Addario® XTAPB1253 strings
- Thermo Aged™ Maple bridge plate

Artwood Traditional Acoustic Electric



OPN
(Open Pore Natural)

¥73,150 (税抜価格 ¥66,500)

AC340CE

- Cutaway Grand Concert body
- 634mm/25" scale
- Solid Okoume top
- Okoume back & sides
- Nyatoh neck
- Ovangkol fretboard & Thermo Aged™ Ovangkol bridge
- 45mm width nut
- Bone nut & Compensated Bone saddle
- Chrome Die-cast tuners(18:1 gear ratio)
- Fishman® Sonicore pickup
- Ibanez AEQ-SP2 preamp w/Onboard tuner
- Balanced XLR & 1/4" outputs
- Ibanez Advantage™ bridge pins
- D'Addario® XTAPB1253 strings
- Thermo Aged™ Maple bridge plate



OAW
(Open Pore Antique White)

¥84,700 (税抜価格 ¥77,000)

AN419E

- Grand Concert body
- 634mm/25" scale
- Solid Sitka Spruce top
- Flamed Maple back & sides
- Maple neck
- Maple fretboard & bridge
- 45mm width nut
- Bone nut & Compensated Bone saddle
- Chrome Die-cast tuners(18:1 gear ratio)
- Ibanez T-bar Undersaddle pickup
- Ibanez Custom Electronics
- Ibanez Advantage™ bridge pins
- D'Addario® XTAPB1253 strings



OAW
(Open Pore Antique White)

SPOT MODEL

¥84,700 (税抜価格 ¥77,000)

AN419E

- Parlor body
- 634mm/25" scale
- 12th fret joint
- Solid Sitka Spruce top
- Flamed Maple back & sides
- Maple neck
- Maple fretboard & bridge
- Bone nut & Compensated Bone saddle
- Chrome Open Gear tuners (18:1 gear ratio)
- Ibanez T-bar Undersaddle pickup
- Ibanez Custom Electronics
- Ibanez Advantage™ bridge pins
- D'Addario® XTAPB1253 strings

AEG



LGS
(Natural Low Gloss)

SPOT MODEL

¥85,800 (税抜価格 ¥78,000)

AEG200

- AEG body
- 634mm/25" scale
- Solid Sitka Spruce top
- Okoume back & sides
- Nyatoh neck
- Ovangkol fretboard & bridge
- Specially designed inlay
- Abalone & wooden rosette
- Wooden body binding
- Bone nut & Compensated Bone saddle
- Chrome Die-cast tuners(18:1 gear ratio)
- Ibanez T-bar II Undersaddle pickup
- Ibanez AEQ-TTS preamp w/Onboard tuner
- Ibanez Advantage™ bridge pins
- D'Addario® XTAPB1253 strings



VVH
(Vintage Violin High Gloss)

SPOT MODEL

¥60,500 (税抜価格 ¥55,000)

AEG70

- AEG body
- 634mm/25" scale
- Flamed Maple top
- Sapele back & sides
- Nyatoh neck (satin finish)
- Walnut fretboard & bridge
- Chrome Die-cast tuners(18:1 gear ratio)
- Ibanez T-bar II Undersaddle pickup
- Ibanez AEQ-TTS preamp w/Onboard tuner
- Ibanez Advantage™ bridge pins
- Ibanez IACSP6C coated strings



NMH
(Natural Mahogany High Gloss)

¥55,000 (税抜価格 ¥50,000)

AEG62

- AEG body
- 634mm/25" scale
- Sapele top
- Sapele back & sides
- Nyatoh neck (satin finish)
- Walnut fretboard & bridge
- Specially designed inlay
- Chrome Die-cast tuners(18:1 gear ratio)
- Ibanez T-bar II Undersaddle pickup
- Ibanez AEQ-TTS preamp w/Onboard tuner
- Ibanez Advantage™ bridge pins
- Ibanez IACSP6C coated strings

New Model



BK
(Black High Gloss)

¥53,900 (税抜価格 ¥49,000)

AEG52

- AEG body
- 634mm/25" scale
- Spruce top
- Okoume back & sides
- Nyatoh neck (satin finish)
- Laurel fretboard & bridge
- Specially designed Vine inlay
- Chrome Die-cast tuners(18:1 gear ratio)
- Ibanez T-bar II Undersaddle pickup
- Ibanez AEQ-TTS preamp w/Onboard tuner
- Ibanez Advantage™ bridge pins
- Ibanez IACSP6C coated strings



BK
(Black High Gloss)

DHH
(Dark Honey Burst High Gloss)

IBH
(Indigo Blue Burst High Gloss)

DRH
(Deep Red Burst High Gloss)

¥49,500 (税抜価格 ¥45,000)

AEG50

- AEG body
- 634mm/25" scale
- Spruce top
- Sapele back & sides
- Nyatoh neck (satin finish)
- Walnut fretboard & bridge
- Chrome Die-cast tuners(18:1 gear ratio)
- Ibanez T-bar II Undersaddle pickup
- Ibanez AEQ-TTS preamp w/Onboard tuner
- Ibanez Advantage™ bridge pins
- Ibanez IACSP6C coated strings

Left-handed



BKH
(Black High Gloss)
SPOT MODEL

¥49,500 (税抜価格 ¥45,000)

AEG50L

- AEG body
- 634mm/25" scale
- Spruce top
- Sapele back & sides
- Nyatoh neck (satin finish)
- Walnut fretboard & bridge
- Chrome Die-cast tuners(18:1 gear ratio)
- Ibanez T-bar II Undersaddle pickup
- Ibanez AEQ-TTS preamp w/Onboard tuner
- Ibanez Advantage™ bridge pins
- Ibanez IACSP6C coated strings

Nylon String



BKH
(Black High Gloss)
SPOT MODEL

¥49,500 (税抜価格 ¥45,000)

AEG50N

- AEG body
- 14th fret joint
- Spruce top
- Sapele back & sides
- Nyatoh neck (satin finish)
- Walnut fretboard & bridge
- 46mm width nut
- Gold Classical tuners
- Ibanez T-bar II Undersaddle pickup
- Ibanez AEQ-TTS preamp w/Onboard tuner
- Ibanez ICL5NT strings

AEWC



TKS
(Transparent Black Sunburst High Gloss)

¥94,600 (税抜価格 ¥86,000)

AEWC400

- AEW specially designed comfort body
- 634mm/25" scale
- Flamed Maple top
- Flamed Maple back & sides
- Body depth: 50/100mm at neck joint/body end
- Nyatoh neck, AEW Asymmetric comfort grip (satin finish)
- Walnut fretboard & Walnut AEW original top loading bridge
- Abalone rosette
- Chrome Die-cast tuners w/Black knobs
- Fishman® Sonicore pickup
- Ibanez AEQ-SP2 preamp w/Onboard tuner
- Balanced XLR & 1/4" outputs
- Ibanez IACS6C coated strings
- Large frets



NNB
(Natural Browned Burst High Gloss)

¥94,600 (税抜価格 ¥86,000)

AEWC300

- AEW specially designed comfort body
- 634mm/25" scale
- Solid Spruce top
- Flamed Maple back & sides
- Body depth: 50/100mm at neck joint/body end
- Nyatoh neck, AEW Asymmetric comfort grip (satin finish)
- Walnut fretboard & Walnut AEW original top loading bridge
- Abalone rosette
- Chrome Die-cast tuners w/Black knobs
- Fishman® Sonicore pickup
- Ibanez AEQ-SP2 preamp w/Onboard tuner
- Balanced XLR & 1/4" outputs
- Ibanez IACS6C coated strings
- Large frets

PERFORMANCE

New Model



NT
(Natural High Gloss)

OPEN PRICE

PC33CE

- Cutaway Grand Concert body
- 634mm/25" scale
- Spruce top
- Sapele back & sides
- Nyatoh neck (satin finish)
- Laurel fretboard & bridge
- Specially designed Wodden Vine inlay
- Maple rosette
- Chrome Die-cast tuners(18:1 gear ratio)
- Ibanez Undersaddle pickup
- Ibanez AEQ-2T preamp w/Onboard tuner
- Ibanez Advantage™ bridge pins
- Ibanez IACS6C coated strings

New Model



NMH
(Natural Mahogany High Gloss)

OPEN PRICE

PC33MHCE

- Cutaway Grand Concert body
- 634mm/25" scale
- Sapele top
- Sapele back & sides
- Nyatoh neck (satin finish)
- Laurel fretboard & bridge
- Specially designed Wooden Vine inlay
- Chrome Die-cast tuners(18:1 gear ratio)
- Ibanez Undersaddle pickup
- Ibanez AEQ-2T preamp w/Onboard tuner
- Ibanez Advantage™ bridge pins
- Ibanez IACS6C coated strings

New Model



NMH
(Natural Mahogany High Gloss)

OPEN PRICE

PF33MHCE

- Cutaway Dreadnought body
- Sapele top
- Sapele back & sides
- Nyatoh neck
- Laurel fretboard & bridge
- Specially designed Wooden Vine inlay
- Chrome Die-cast tuners(18:1 gear ratio)
- Ibanez Undersaddle pickup
- Ibanez AEQ-2T preamp w/Onboard tuner
- Ibanez Advantage™ bridge pins
- Ibanez IACS6C coated strings



OPN
(Open Pore Natural)

OPEN PRICE

PC12MHCE

- Cutaway Grand Concert body
- 634mm/25" scale
- Okoume top
- Okoume back & sides
- Nyatoh neck
- Laurel fretboard & bridge
- Tortoiseshell rosette
- Chrome Open Gear tuners(18:1 gear ratio)
- Ibanez Undersaddle pickup
- Ibanez AEQ-2T preamp w/Onboard tuner
- Ibanez Advantage™ bridge pins
- Ibanez IACS6C coated strings

New Model



WK
(Weathered Black Open Pore)

SPOT MODEL
OPEN PRICE

PC14MHCE

- Cutaway Grand Concert body
- 634mm/25" scale
- Okoume top
- Okoume back & sides
- Nyatoh neck
- Laurel fretboard & bridge
- Tortoiseshell rosette
- Chrome Open Gear tuners(18:1 gear ratio)
- Ibanez Undersaddle pickup
- Ibanez AEQ-2T preamp w/Onboard tuner
- Ibanez Advantage™ bridge pins
- Ibanez IACS6C coated strings



OPN
(Open Pore Natural)

OPEN PRICE

PF12MHCE

- Cutaway Dreadnought body
- Okoume top
- Okoume back & sides
- Nyatoh neck
- Laurel fretboard & bridge
- Tortoiseshell rosette
- Chrome Open Gear tuners(18:1 gear ratio)
- Ibanez Undersaddle pickup
- Ibanez AEQ-2T preamp w/Onboard tuner
- Ibanez Advantage™ bridge pins
- Ibanez IACS6C coated strings



OPN
(Open Pore Natural)

OPEN PRICE

PN12MHE

- Parlor body
- 628.65mm/24.8" scale
- Okoume top
- Okoume back & sides
- Nyatoh neck
- Laurel fretboard & bridge
- Tortoiseshell rosette
- Chrome Open Gear tuners(18:1 gear ratio)
- Ibanez Undersaddle pickup
- Ibanez AEQ-2T preamp w/Onboard tuner
- Ibanez Advantage™ bridge pins
- Ibanez IACS6C coated strings

Classical



DVS
(Dark Violin Sunburst High Gloss)

NT
(Natural High Gloss)

TRD
(Transparent Red High Gloss)

¥44,000 (税抜価格 ¥40,000)

GA30TCE

- Thinline Cutaway Classical body
- 14th fret joint
- Spruce top
- Sapele back & sides
- Nyatoh neck (satin finish)
- Walnut fretboard & bridge
- 46mm width nut
- Classical Mosaic Design rosette
- Chrome Classical tuners w/Black knobs
- Ibanez Undersaddle pickup
- Ibanez AEQ210T preamp w/Onboard tuner
- Balanced XLR & 1/4" outputs
- Ibanez ICLS6NT strings

Acoustic Basses

New Model



MHS
(Mahogany Sunburst Open Pore)

¥70,400 (税抜価格 ¥64,000)

AEGB24E

- AEG body
- 815mm/32" scale
- 16th fret joint
- Sapele top
- Sapele back & sides
- 3pc Nyatoh/Maple neck (satin finish)
- Walnut fretboard & bridge
- Bone nut & saddle
- Black Die-cast tuners
- Ibanez Undersaddle pickup
- Ibanez AEQ-2T preamp w/Onboard tuner
- Ibanez IABS4XC32 Carbon coated strings

New Model



WK
(Weathered Black Open Pore)

SPOT MODEL
OPEN PRICE

PCBE14MH

- Grand Concert body
- 810mm/32" scale
- 15th fret joint
- Okoume top
- Okoume back & sides
- Maple neck
- Laurel fretboard & bridge
- Tortoiseshell rosette
- Chrome Die-cast tuners
- Ibanez Undersaddle pickup
- Ibanez AEQ-2T preamp w/Onboard tuner
- Ibanez IABS4XC32 Carbon coated strings



OPN
(Open Pore Natural)

OPEN PRICE

PNB14E

- Parlor body
- 628.65mm/24.8" scale
- 12th fret joint
- Okoume top
- Okoume back & sides
- Maple neck
- Laurel fretboard & bridge
- Chrome Die-cast tuners
- Ibanez Undersaddle pickup
- Ibanez AEQ-2T preamp w/Onboard tuner
- D'Addario® XTPBB190GS strings

EWP

Piccolo Guitar



OPN
(Open Pore Natural)

¥30,800 (税抜価格 ¥28,000)

EWP14WB

- Cutaway Tenor Style EW body
- 432mm/17" scale
- Ovangkol top
- Ovangkol back & sides
- Okoume neck
- Purpleheart fretboard & bridge
- 42mm width nut
- Maple dot inlay
- Abalone rosette
- Chrome Die-cast tuners
- Ibanez Advantage™ bridge pins
- String Gauge: .010/.014/.023/.030/.039/.047
- Factory Tuning: 1A,2E,3C,4G,5D,6A
- Gig bag included

Piccolo Guitar



DBO
(Dark Brown Open Pore)

¥30,800 (税抜価格 ¥28,000)

EWP13WB

- Cutaway Tenor Style EW body
- 432mm/17" scale
- Macassar Ebony top
- Macassar Ebony back & sides
- Okoume neck
- Purpleheart fretboard & bridge
- 42mm width nut
- Maple dot inlay
- Abalone rosette
- Chrome Die-cast tuners
- Ibanez Advantage™ bridge pins
- String Gauge: .010/.014/.023/.030/.039/.047
- Factory Tuning: 1A,2E,3C,4G,5D,6A
- Gig bag included

Ukulele



OPN
(Open Pore Natural)

¥39,600 (税抜価格 ¥36,000)

UEWT14E

- Cutaway Tenor Style EW body
- 432mm/17" scale
- Ovangkol top
- Ovangkol back & sides
- Okoume neck
- Purpleheart fretboard & bridge
- Maple dot inlay
- Maple rosette
- Grover® Chrome Open Gear tuners with Black Knob
- Ibanez Undersaddle pickup
- Ibanez AEQ2U preamp w/Onboard tuner
- Aquila® Nylblack strings



LBS
(Light Brown Sunburst Open Pore)

¥39,600 (税抜価格 ¥36,000)

UEW36FME

- Cutaway Concert Style EW body
- Flamed Maple top
- Flamed Maple back & sides
- Okoume neck
- Purpleheart fretboard & bridge
- Maple offset dot inlay
- Abalone rosette
- Grover® Chrome Open Gear tuners with Black Knob
- Ibanez Undersaddle pickup
- Ibanez AEQ2U preamp w/Onboard tuner
- Aquila® Nylblack strings



DBO
(Dark Brown Open Pore)

¥33,000 (税抜価格 ¥30,000)

UEW13MEE

- Cutaway Concert Style EW body
- Macassar Ebony top
- Macassar Ebony back & sides
- Okoume neck
- Purpleheart fretboard & bridge
- Maple dot inlay
- Maple rosette
- Grover® Chrome Open Gear tuners with Black Knob
- Ibanez Undersaddle pickup
- Ibanez AEQ2U preamp w/Onboard tuner
- Aquila® Nylblack strings



OPN
(Open Pore Natural)

¥33,000 (税抜価格 ¥30,000)

UEW12ACE

- Cutaway Concert Style EW body
- Acacia top
- Acacia back & sides
- Okoume neck
- Purpleheart fretboard & bridge
- Maple dot inlay
- Maple rosette
- Grover® Chrome Open Gear tuners with Black Knob
- Ibanez Undersaddle pickup
- Ibanez AEQ2U preamp w/Onboard tuner
- Aquila® Nylblack strings



OPN
(Open Pore Natural)

¥33,000 (税抜価格 ¥30,000)

UEW12E

- Cutaway Concert Style EW body
- Flamed Maple top
- Flamed Maple back & sides
- Okoume neck
- Purpleheart fretboard & bridge
- Maple dot inlay
- Maple rosette
- Grover® Chrome Open Gear tuners with Black Knob
- Ibanez Undersaddle pickup
- Ibanez AEQ2U preamp w/Onboard tuner
- Aquila® Nylblack strings



OPN
(Open Pore Natural)

¥26,950 (税抜価格 ¥24,500)

UEW5EJ

- Cutaway Concert Style EW body
- Sapele top
- Sapele back & sides
- Okoume neck
- Purpleheart fretboard & bridge
- Maple dot inlay
- Abalone rosette
- Chrome Open Gear tuners
- Ibanez Undersaddle pickup
- Ibanez AEQ2U preamp w/Onboard tuner
- Aquila® Nylblack strings

Troubadour

カフェや比較的小さなライブハウスで演奏するとき、多くのプレイヤーにとってステージへ持ち込むアコースティック・アンプに最も必要なことは何でしょうか？「深くしみわたるような、自然な鳴り」だと答える人がいるかもしれません。そして「持ち運びやすさ」と答える人も多いのではないのでしょうか。まるでハンド・クラフトのブティック・アンプのような落ち着いた雰囲気を持つTroubadour (トルバドール)はそんなプレイヤーに最適なアコースティック・ギター・アンプといえます。例えば近くのカフェ・ライブで爪弾く。例えばパーティ会場でかき鳴らす。そんなとき、Troubadourのサウンドがきくと部屋中を満たしてくれるでしょう。Troubadourは「サウンド」と「ポータビリティ」を追求してデザインされているのですから。



Acoustic Guitar Combo Amplifier T80IISM

- Output power: 80W@4Ω
- Speaker unit: 8" Woofer, 1" Dome tweeter
- Instrument channel controls: Bass, Low-mid, High-mid, Treble, Volume
- Microphone channel controls: Bass, Low-mid, High-mid, Treble, Volume
- Footswitchable FX Controls: Instrument Chorus speed with on/off switch, Instrument Reverb mix and Microphone Reverb mix with on/off switch
- Aux input control: Volume
- Master controls: Volume, Phase switch
- I/O's: 1/4" Instrument input, XLR Microphone input, FX loop for each channel, Aux input, 1/4" Line out, XLR D.I. out
- Cabinet: Closed back
- Size: 287(W) x 295(D) x 391(H) (mm)
- Weight: 9.8kg

¥49,500 (税抜価格 ¥45,000)

Footswitch



IFS2L

- T80IISM 用のフットスイッチ。
- 1 : Instrument Chorus on/off
 - 2 : Instrument & Microphone Reverb on/off

¥4,400 (税抜価格 ¥4,000)

Acoustic Guitar Combo Amplifier T30II



- Output power: 30W@8Ω
- Speaker unit: 8" Coaxial (with tweeter)
- Instrument channel controls: Bass, Treble, Volume
- Microphone channel controls: Bass, Treble, Volume
- FX controls: Instrument Chorus speed with on/off switch, Instrument Reverb mix and Microphone Reverb mix with on/off switch
- Master control: Volume
- I/O's: 1/4" Instrument input, XLR Microphone input, Aux input, Line out
- Cabinet: Closed back
- Size: 363(W) x 263(D) x 273(H) (mm)
- Weight: 5.95kg

¥33,000 (税抜価格 ¥30,000)

Acoustic Guitar Combo Amplifier T15II



- Output power: 15W@6Ω
- Speaker unit: 6.5" Full range
- Instrument channel controls: Bass, Treble, Volume, Chorus on/off switch
- Microphone channel control: Volume
- I/O's: 1/4" Instrument input, XLR Microphone input, Aux input
- Cabinet: Closed back
- Size: 235(W) x 210(D) x 218(H) (mm)
- Weight: 3.8kg

¥17,600 (税抜価格 ¥16,000)

IBZ10W AMPS

Ibanezプラクティス・アンプ、IBZ10。6.5インチのオリジナル・スピーカーを搭載、使いやすさを追及したシンプルなコントロールで、プラグインしたその瞬間から本格的なギター/ベース・サウンドが楽しめます。ミニ・プラグ対応のAUX-IN端子はスマートフォン等との接続に便利です。



Guitar Combo Amplifier IBZ10GV2

- Output power: 10W@4Ω
- Speaker unit: 6.5" Full range
- Controls: Distortion on/off switch, Gain, Bass, Treble, Volume
- I/O's: 1/4" Input, 1/8" Aux input, 1/8" Headphones out
- Cabinet: Closed back
- Size: 255(W) x 174(D) x 300(H) (mm)
- Weight: 3.5kg

OPEN PRICE

Bass Combo Amplifier IBZ10BV2



- Output power: 10W@4Ω
- Speaker unit: 6.5" Full range
- Controls: Bass, Middle, Treble, Volume
- I/O's: 1/4" Input, 1/8" Aux input, 1/8" Headphones out
- Cabinet: Closed back
- Size: 255(W) x 174(D) x 300(H) (mm)
- Weight: 3.5kg

OPEN PRICE

MINI

Ibanezが考える“ミニ・サイズのエフェクター”は、既存のエフェクターから単にサイズと機能を小さくデフォルメしただけのものであったり、サウンドも「〇〇っぽい」だけのものではなかったり、という意味での“ミニ”とはちょっと違います。それぞれがIbanezのクラシカル・ペダル・エフェクターのサウンド・キャラクターを受け継ぎつつ、機能や仕様になんらかの新しい特徴を持った新しい製品であること、この“ひと味違うミニ・エフェクター”こそ、Ibanezが目指す製品コンセプトです。ダイキャスト製で重量が有り、スイッチが踏み込み易いIbanezオリジナルの筐体もまた、小さくて大きな特徴です。



New Model Phaser

PHMINI MADE IN JAPAN

- Speed, Depth and Feedback controls
- Stage switch: 4-Stage / 6-Stage
- True bypass
- Power supply: External DC 9 volt AC adapter (center negative)
- Required current: 5mA@9V

¥15,400 (税抜価格 ¥14,000)



New Model Booster

BTMINI MADE IN JAPAN

- Level, Bass and Treble controls
- True bypass
- Power supply: External DC 9 volt AC adapter (center negative)
- Required current: 12mA@9V

¥13,750 (税抜価格 ¥12,500)



Tremolo

TRMINI MADE IN JAPAN

- Depth, Wave and Speed controls
- Level trim pot
- True bypass
- Power supply: External DC 9 volt AC adapter (center negative)
- Required current: 13mA@9V

¥14,300 (税抜価格 ¥13,000)



Flanger

FLMINI MADE IN JAPAN

- Speed, Depth and Regen controls
- True bypass
- Power supply: External DC 9 volt AC adapter (center negative)
- Required current: 50mA@9V

¥15,400 (税抜価格 ¥14,000)



Fuzz

FZMINI MADE IN JAPAN

- Sustain, Tone and Level controls
- True bypass
- Power supply: External DC 9 volt AC adapter (center negative)
- Required current: 16mA@9V

¥12,650 (税抜価格 ¥11,500)



Chorus

CSMINI MADE IN JAPAN

- Speed, Depth and Level controls
- True bypass
- Power supply: External DC 9 volt AC adapter (center negative)
- Required current: 22mA@9V

¥12,650 (税抜価格 ¥11,500)



Analog Delay

ADMINI MADE IN JAPAN

- Delay Time, Repeat and Blend controls
- Delay time: 20-600ms
- True bypass
- Power supply: External DC 9 volt AC adapter (center negative)
- Required current: 23mA@9V

¥14,300 (税抜価格 ¥13,000)



Chromatic Tuner

BIGMINI

- Tuning mode: Chromatic (Needle mode / Strobe mode)
- Tuning range: A0 (27.5Hz) - C8 (4186Hz)
- Calibration: 435Hz - 445Hz
- Drop tune: Flat 4 semitones
- True bypass
- Power supply: External DC 9 volt AC adapter (center negative)
- Required current: 14mA@9V

¥6,270 (税抜価格 ¥5,700)

TUBE SCREAMER

1970年代から現在に至るまで、オーバードライブの代名詞として、多くのギタリストに愛用され続けているTUBE SCREAMERシリーズ。TS808やTS9を筆頭にベース用TS9Bまでバリエーション・モデルをラインナップしています。



The Original TUBE SCREAMER

TS808 MADE IN JAPAN

- Overdrive, Tone and Level controls
- Power supply: One 9 volt battery or external DC 9 volt AC adapter (center negative)
- Required current: 8mA@9V

¥21,450 (税抜価格 ¥19,500)



NU TUBESCREAMER

NTS MADE IN JAPAN

- Built-in KORG® Nutube®
- Drive, Tone, Level and Mix controls
- Relay True Bypass
- Power supply: One 9 Volt battery or External DC 9-18 Volt AC adapter (center negative)
- Required current: 50mA@9V, 60mA@18V

¥35,200 (税抜価格 ¥32,000)



TUBE SCREAMER mini

TSMINI MADE IN JAPAN

- Overdrive, Tone and Level controls
- True bypass
- Power supply: External DC 9 volt AC adapter (center negative)
- Required current: 18mA@9V

¥9,900 (税抜価格 ¥9,000)



TUBE SCREAMER w/Booster

TS808DX MADE IN JAPAN

- Overdrive and Booster in one box
- Overdrive section: Overdrive, Tone and Level controls
- Booster section: Boost control, Pre/Post overdrive switch
- Internal voltage switch: 9 volt / 18 volt
- True bypass
- Power supply: One 9 volt battery or external DC 9 volt AC adapter (center negative)
- Required current: 43mA@9V, 114mA@18V

¥33,000 (税抜価格 ¥30,000)



Hand-Wired TUBE SCREAMER

TS808HW MADE IN JAPAN

- Limited production
- Completely hand-wired
- Overdrive, Tone and Level controls
- Japanese MOGAMI OFC cable
- True bypass
- Power supply: One 9 volt battery or external DC 9 volt AC adapter (center negative)
- Required current: 8mA@9V

¥57,200 (税抜価格 ¥52,000)

※本ページに掲載されているモデルの電源供給につきましては、9V (006P)乾電池 × 1 または、9V/センター・マイナス仕様のACアダプターをお求めください。(TSMINIはACアダプター駆動のみ)

**TUBE SCREAMER****TS9** **MADE IN JAPAN**

- Drive, Tone and Level controls
- Power supply: One 9 volt battery or external DC 9 volt AC adapter (center negative)
- Required current: 8mA@9V

¥15,950 (税抜価格 ¥14,500)**Turbo TUBE SCREAMER****TS9DX** **MADE IN JAPAN**

- Drive, Tone and Level controls
- Modes: Turbo, Hot, +, TS9
- Power supply: One 9 volt battery or external DC 9 volt AC adapter (center negative)
- Required current: 8mA@9V

¥19,250 (税抜価格 ¥17,500)**Bass TUBE SCREAMER****TS9B** **MADE IN JAPAN**

- Drive, Mix, Bass, Treble and Level controls
- Power supply: One 9 volt battery or external DC 9 volt AC adapter (center negative)
- Required current: 10mA@9V

¥19,250 (税抜価格 ¥17,500)

Classic Wah Pedal

レンジの広さと掛かり具合の良さ、可変幅の広さが好まれて著名なプロに愛用され、知名度を拡大したワウ・ペダル、Ibanez WH10。ヴィンテージ市場の常連となった初代、そこから進化した2代目に連なる3代目モデル”WH10V3”が、各部仕様とサウンドの見直しを経てデビューしました。

Wah Pedal WH10V3

- Control: Depth
- Switches: Effect on/off, Guitar/Bass frequency range, True/Buffered Bypass
- I/O's: 1/4" Input, 1/4" Output
- Size: 100(W) x 202(D) x 84(H) (mm)
- Power supply: One 9 volt battery or external DC 9 volt AC adapter (center negative)
- Required current: 12mA@9V

¥18,150 (税抜価格 ¥16,500)

Echo Shifter

ペダル・エフェクトでありながら筐体中央に大ぶりのスライダーを備えた異色デザインと、尋常から超特異まで振幅が広くプレーヤーの想像力次第で得られる様々なディレイ・エフェクトが特長の前身モデル、ES2:Echo Shifterから7年。ES3はその機能性とサウンドをさらに追及した、新たな“遊べる”Echo Shifter(エコー・シフター)です。

Echo Shifter ES3

- Controls: Mix, Feedback, Depth, Speed, Delay Time
- Switches: Effect on/off, Tap/Osc on (press and hold), Analog/Digital, Modulation on/off, Instrument/Line level select
- I/O's: 1/4" Input, 1/4" Output
- Delay time: Analog 40-600ms, Digital 40-1500ms
- Size: 120(W) x 160(D) x 65(H) (mm)
- Power supply: External DC 9 volt AC adapter (center negative)
- Required current: 200mA@9V

¥26,400 (税抜価格 ¥24,000)

Acoustic Guitar Preamp

アンプへプラグインして演奏するエレクトリック・アコースティック・ギターやウクレレはただ「アンプから音が出る」だけで良いのでしょうか。ステージの大小や空間の広い狭い、共演者の有無やバンドかそうでないか等、サウンドに求めることが常に同じであるはずがありません。AGP10はすべてのエレクトリック・アコースティック楽器で繊細かつ幅広い音作りができるように設計したエレクトリック・アコースティック楽器専用のプリアンプです。音へのこだわりはもちろん、高い視認性と操作の易しさに加え設置方法にも工夫を凝らして設計しています。

**AGP10**

- Controls: Bass, Low Mid, Middle, High Mid, Treble, Notch Frequency, Volume, Input trim
- Switches: Phase Reverse, Notch Filter, GND Lift
- I/O's: Input, Output, Balanced Output
- Size: 137(W) x 90(D) x 60(H)(mm)

¥26,400 (税抜価格 ¥24,000)

Tuner

Clip Chromatic Tuner

TUNANO

- Tuning modes: Chromatic / Guitar / Bass / Ukulele
- Tuning range: A0(27.5Hz) - C8(4186Hz)
- Calibration: A4 = 440Hz
- Power supply: Lithium battery (CR2032) x1

OPEN PRICE



DC Cords

DC301L

- コンパクト・エフェクター3台に電源を分配供給するコード
- Core: AWG20

¥1,650 (税抜価格 ¥1,500)



DC501L

- コンパクト・エフェクター5台に電源を分配供給するコード
- Core: AWG20

¥1,980 (税抜価格 ¥1,800)



Cables

Series	Model	Length	Description	Price
HF	HF05P	0.15m / 0.5ft	Patch cable 2 Right angled plugs	¥4,400 (税抜価格 ¥4,000)
	HF10	3.05m / 10ft	2 Straight plugs	¥7,150 (税抜価格 ¥6,500)
	HF10L	3.05m / 10ft	Straight & Right angled plugs	¥7,150 (税抜価格 ¥6,500)
	HF20	6.10m / 20ft	2 Straight plugs	¥9,350 (税抜価格 ¥8,500)
	HF20L	6.10m / 20ft	Straight & Right angled plugs	¥9,350 (税抜価格 ¥8,500)

■ HF Series : 高音質が求められるレコーディング環境やプロのスタジオ・ユースに耐え得ることを念頭に開発した、芯線に OFC (Oxygen-Free Copper, 無酸素銅) を 150 本という圧倒的な本数で使用するハイエンド・ギターケーブル。

Series	Model	Length	Description	Price
PA	PA01K5L	-	Patch Cable Kit 5ft cable + Angled plug x 6	¥6,490 (税抜価格 ¥5,900)

■ PA Series : ソルダレス (=ハンダ不要) のパッチケーブル自作キット。ケーブルをお好みの長さに切ったら、その両端をプラグに差し込み、プラス・ドライバーで取り付けネジを締めるだけで完成です。

Series	Model	Length	Description	Price
SI	SI04PR	0.12m / 0.4ft	Patch Cable Right Angle & Reversed Right Angled plugs	¥1,650 (税抜価格 ¥1,500)
	SI05P	0.15m / 0.5ft	Patch Cable 2 Right Angled plugs	¥1,650 (税抜価格 ¥1,500)
	SI10	3.05m / 10ft	2 Straight plugs	¥2,750 (税抜価格 ¥2,500)
	SI10L	3.05m / 10ft	Straight & Right Angled plugs	¥2,750 (税抜価格 ¥2,500)
	SI20	6.10m / 20ft	2 Straight plugs	¥3,300 (税抜価格 ¥3,000)
	SI20L	6.10m / 20ft	Straight & Right Angled plugs	¥3,300 (税抜価格 ¥3,000)

■ SI Series : コスト・パフォーマンスに優れたスタンダード・グレードのギター / ベース用ケーブル。長さやプラグ形状で6種類のバリエーションをラインナップ。



HF10

HF05P



PA01K5L



SI10L

SI04PR

Strings

Electric Guitar Strings

Model	Type	Description	Gauge	Price
IEGS6	Nickel Wound	6-string / Super Light	.009/.011/.016/.024/.032/.042	¥1,430 (税抜価格 ¥1,300)
IEGS61	Nickel Wound	6-string / Regular Light	.010/.013/.017/.026/.036/.046	¥1,430 (税抜価格 ¥1,300)
IEGS61MK	Nickel Wound	6-string for Ibanez miKro 22.2" scale	.010/.013/.017/.026/.036/.046	¥1,430 (税抜価格 ¥1,300)
IEGS7	Nickel Wound	7-string / Super Light	.009/.011/.016/.024/.032/.042/.054	¥1,870 (税抜価格 ¥1,700)
IEGS71	Nickel Wound	7-string / Regular Light	.010/.013/.017/.026/.036/.046/.059	¥1,870 (税抜価格 ¥1,700)
IEGS8	Nickel Wound	8-string / Super Light	.009/.011/.016/.024/.032/.042/.054/.065	¥2,585 (税抜価格 ¥2,350)
IEGS81	Nickel Wound	8-string / Regular Light Top	.010/.013/.017/.030/.042/.054/.064/.074	¥3,685 (税抜価格 ¥3,350)
IEGS9	Nickel Wound	9-string / Super Light for long scale	.009/.011/.016/.024/.032/.042/.054/.075/.090	¥4,400 (税抜価格 ¥4,000)
PIEGS6	Nickel Wound (NEW)	6-string / Super Light (4sets/pack)	.009/.011/.016/.024/.032/.042	¥4,620 (税抜価格 ¥4,200)
PIEGS61	Nickel Wound (NEW)	6-string / Regular Light (4sets/pack)	.010/.013/.017/.026/.036/.046	¥4,620 (税抜価格 ¥4,200)

※ IEGS81 は 27 インチ・スケール以下の 8 弦ギター専用弦です。また、Ibanez 製品以外の 8 弦モデルには適合しない場合がありますので、予めご了承ください。
※ IEGS9 は Ibanez 製品の 9 弦モデル専用弦です。

Electric Bass Strings (Coated)

Model	Type	Description	Gauge	Price
IEBS4C	Nickel Wound	4-string / Light Top Medium Bottom	.045/.065/.085/.105	¥4,400 (税抜価格 ¥4,000)
IEBS5C	Nickel Wound	5-string / Light Top Medium Bottom	.045/.065/.085/.105/.130	¥4,785 (税抜価格 ¥4,350)
IEBS6C	Nickel Wound	6-string / Light Top Medium Bottom	.032/.045/.065/.085/.105/.130	¥5,720 (税抜価格 ¥5,200)

Acoustic Guitar Strings (Coated)

Model	Type	Description	Gauge	Price
IACS6C	80/20 Bronze	6-string / Light	.012/.016/.024/.032/.042/.053	¥1,650 (税抜価格 ¥1,500)
IACSP6C	Phosphor Bronze	6-string / Light	.012/.016/.024/.032/.042/.053	¥1,760 (税抜価格 ¥1,600)
IACS12C	80/20 Bronze	12-string / Light	.010/.010/.014/.014/.023/.008/.030/.012/.039/.018/.047/.027	¥2,145 (税抜価格 ¥1,950)
PIACS6C	80/20 Bronze (NEW)	6-string / Light (4sets/pack)	.012/.016/.024/.032/.042/.053	¥5,500 (税抜価格 ¥5,000)

Acoustic Bass Strings (Coated)

Model	Type	Description	Gauge	Price
IABS4C	80/20 Bronze	4-string	.040/.060/.075/.095	¥4,730 (税抜価格 ¥4,300)
IABS4XC	80/20 Bronze	4-string	CARBON X-COATED .040/.060/.075/.095	¥10,450 (税抜価格 ¥9,500)
IABS4XC32	80/20 Bronze	4-string for 32" scale	CARBON X-COATED .040/.060/.075/.095	¥10,450 (税抜価格 ¥9,500)

Nylon Strings

Model	Type	Description	Gauge	Price
ICLS6NT	Claer Nylon & Silver Plated Wound	6-string / Normal tension	.0280/.0322/.0403/.029/.035/.043	¥1,815 (税抜価格 ¥1,650)

Mini Guitar Strings (Coated)

Model	Type	Description	Gauge	Price
IPCS6C	80/20 Bronze	6-string / Extra Light	.010/.014/.023/.030/.039/.047	¥1,650 (税抜価格 ¥1,500)

※ Ibanez 製品の EWP シリーズ専用弦です。

Ukulele Strings

Model	Type	Description	Gauge	Price
NBUKS4	Black Nylon manufactured by Aquila Strings®	4-string / Soprano, Concert	.024/.032/.037/.026	OPEN PRICE



Straps

Ibanez Bass Workshop Strap

Model	Description	Price
BWS900	Guitar Strap (1,020(MIN) - 1,250(MAX)mm/90mm)	¥5,390 (税抜価格 ¥4,900)
BWS90	Guitar Strap (1,020(MIN) - 1,250(MAX)mm/90mm)	¥3,740 (税抜価格 ¥3,400)

より軽やかに安定してベースを立奏するためにベース“だけ”に焦点を当て開発したベース・ワークショップ・ストラップ。“大きさ”に加え“厚さ”でベースの重量をしっかりと受け止め、分散し、肩への重量感を極力軽減します。

- BWS900: パッド長 490mm / パッド幅 90mm / パッド厚 約 38mm
- BWS90: パッド長 490mm / パッド幅 90mm / パッド厚 約 10mm



Designer Collection Strap

Model	Description	Price
DCS50-BK	Guitar Strap / Color: Black (1,700 (MAX) mm/50mm)	¥1,980 (税抜価格 ¥1,800)
DCS50-NB	Guitar Strap / Color: Navy Blue (1,700 (MAX) mm/50mm)	¥1,980 (税抜価格 ¥1,800)
DCS50-OC	Guitar Strap / Color: Ocher (1,700 (MAX) mm/50mm)	¥1,980 (税抜価格 ¥1,800)
DCS50-DB	Guitar Strap / Color: Deep Blue (1,700 (MAX) mm/50mm)	¥1,980 (税抜価格 ¥1,800)
DCS50-MGN	Guitar Strap / Color: Moss Green (1,700 (MAX) mm/50mm)	¥1,980 (税抜価格 ¥1,800)
DCS50-WR	Guitar Strap / Color: Wine Red (1,700 (MAX) mm/50mm)	¥1,980 (税抜価格 ¥1,800)
DCS50D-CGY	Guitar Strap / Color: Charcoal Gray (1,700 (MAX) mm/50mm)	¥1,980 (税抜価格 ¥1,800)
DCS50D-LBL	Guitar Strap / Color: Light Blue (1,700 (MAX) mm/50mm)	¥1,980 (税抜価格 ¥1,800)
DCS50D-MGN	Guitar Strap / Color: Moss Green (1,700 (MAX) mm/50mm)	¥1,980 (税抜価格 ¥1,800)
DCS50D-RD	Guitar Strap / Color: Red (1,700 (MAX) mm/50mm)	¥1,980 (税抜価格 ¥1,800)
DCS50D-BKD	Guitar Strap / Color: Black Denim (1,700 (MAX) mm/50mm)	¥1,980 (税抜価格 ¥1,800)
DCS50D-PBD	Guitar Strap / Color: Pale Blue Denim (1,700 (MAX) mm/50mm)	¥1,980 (税抜価格 ¥1,800)

ユニセックスでどんなファッションにも馴染むシンプルさに、こだわりのデザインを添えたギター/ベース用ストラップ。上品な色合いのDCS50、デニム調ファブリックのDCS50Dともに、裏面にはストラップエンドと同色のやわらかな触り心地の生地を貼り合わせています。クラシカルな手描きフロントと温かみのあるイラストを織り込んだ特製ラベルがアクセントです。



POWERPAD® Strap

Model	Description	Price
GSF510	POWERPAD® Guitar Strap (1,080 (MIN) - 1,280 (MAX) mm/50mm)	¥2,200 (税抜価格 ¥2,000)
GSF510-CGY	POWERPAD® Guitar Strap (1,080 (MIN) - 1,280 (MAX) mm/50mm)	¥2,200 (税抜価格 ¥2,000)

厚みのあるパッドを採用したソフトな掛け心地が特徴の POWERPAD® ストラップ。ストラップのすべりを最適化するため、スクエア状の凹凸を付けた芯材にポリエステル表皮を組み合わせた Slip Stopper 加工を施しています。



POWERPAD® Strap

Model	Description	Price
GSF50-BK	POWERPAD® Guitar Strap / Color: Black (1,150 (MIN) - 1,350 (MAX) mm/50mm)	¥1,100 (税抜価格 ¥1,000)
GSF50-BL	POWERPAD® Guitar Strap / Color: Blue (1,150 (MIN) - 1,350 (MAX) mm/50mm)	¥1,100 (税抜価格 ¥1,000)
GSF50-BR	POWERPAD® Guitar Strap / Color: Brown (1,150 (MIN) - 1,350 (MAX) mm/50mm)	¥1,100 (税抜価格 ¥1,000)
GSF50-LT	POWERPAD® Guitar Strap / Color: Light Teal (1,150 (MIN) - 1,350 (MAX) mm/50mm)	¥1,100 (税抜価格 ¥1,000)
GSF50-MGN	POWERPAD® Guitar Strap / Color: Moss Green (1,150 (MIN) - 1,350 (MAX) mm/50mm)	¥1,100 (税抜価格 ¥1,000)
GSF50-RD	POWERPAD® Guitar Strap / Color: Red (1,150 (MIN) - 1,350 (MAX) mm/50mm)	¥1,100 (税抜価格 ¥1,000)
GSF50S-BK	POWERPAD® Guitar Strap / Color: Black (920 (MIN) - 1,150 (MAX) mm/50mm)	¥1,045 (税抜価格 ¥950)

程良く滑る表面素材に包まれた厚みのあるパッドのソフトな掛け心地が特徴の POWERPAD® ストラップ。



POWERPAD® 924 ULTRA gig bag

Model	Description	Price
IGB924R-BK	POWERPAD® ULTRA gig bag for El. Guitar	¥14,850 (税抜価格 ¥13,500)
IBB924R-BK	POWERPAD® ULTRA gig bag for El. Bass	¥16,500 (税抜価格 ¥15,000)
IAB924R-BK	POWERPAD® ULTRA gig bag for Ac. Guitar	¥16,500 (税抜価格 ¥15,000)

POWERPAD® ULTRAは、楽器ケースに求められる軽さ、丈夫さ、スマートさに加え、防水機能も備えたシリーズです。

- ・ギターのリインに沿って無駄の無い曲線を描いたボディシェイプ。
 - ・楽器全体を包み込む、4重構造のPOWERPAD。
 - ・生地とジッパーに施された防水機能。
 - ・小物やエフェクターの収納などに活躍する、大・中・小の3種類のポケット。
 - ・長時間の持ち運びにも耐えうる軽さ。
 - ・ボディエンドを保護する取り外し可能なリムーバブルパッド。
- 新しいギター・バッグのスタンダードとして、すべてのギタリストに提案したい、バッグの完成です。

- ボディ表面:撥水加工、生地裏:防水コーティング加工
- ファスナー部:止水ジッパー
- サイド・クッション:25mm厚
- トップ&バック:マルチレイヤー・クッション (30mm厚)
- ボトム(内部):プロテクト生地(1,680デニール)
- ボトム(外部):ラバー・パッド
- ボディエンド(内部):リムーバブルパッド(30mm厚)



ギターのサイズに合わせて着脱可能なネックレスト



ギターのサイズに合わせて着脱可能なボディエンド部のパッド



A4サイズのスコア等を収容可能な大容量ポケット



POWERPAD®**724 ULTRA gig bag**

Model	Description	Price
IGB724-BK	POWERPAD® ULTRA gig bag for El. Guitar	¥11,000 (税抜価格 ¥10,000)
IGB724-CGY	POWERPAD® ULTRA gig bag for El. Guitar	¥11,000 (税抜価格 ¥10,000)
IBB724-BK	POWERPAD® ULTRA gig bag for El. Bass	¥13,200 (税抜価格 ¥12,000)
IAB724-BK	POWERPAD® ULTRA gig bag for Ac. Guitar	¥13,200 (税抜価格 ¥12,000)

POWERPAD® ULTRAは、楽器ケースに求められる軽さ、丈夫さ、スマートさに加え、防水機能も備えたシリーズです。

- ・シンプルかつ利便性に優れたデザイン。
- ・楽器全体を包み込む、4重構造のPOWERPAD。
- ・生地とジッパーに施された防水機能。
- ・B4サイズの楽譜も楽々収納可能な大判ポケット。
- ・長時間の持ち運びにも耐える軽さ。
- ・ボディエンドを保護する取り外し可能なリムーバブルパッド。

新しいギター・バッグのスタンダードとして、すべてのギタリストに提案したい、バッグの完成です。

- ボディ表面: 撥水加工、生地裏: 防水コーティング加工
- ファスナー部: 止水ジッパー
- サイド・クッション: 25mm厚
- トップ&バック: マルチレイヤー・クッション (30mm厚)
- ボトム(内部): プロテクト生地 (1,680デニール)
- ボトム(外部): ラバー・パッド
- ボディエンド(内部): リムーバブルパッド(30mm厚)



ギターのサイズに合わせて着脱可能なネックレスト



ギターのサイズに合わせて着脱可能なボディエンド部のパッド



IBB724-BK

IAB724-BK

POWERPAD®**540 gig bag**

Model	Description	Price
IGB540-BK	POWERPAD® gig bag for El. Guitar	¥6,050 (税抜価格 ¥5,500)
IBB540-BK	POWERPAD® gig bag for El. Bass	¥6,600 (税抜価格 ¥6,000)
IAB540-BK	POWERPAD® gig bag for Ac. Guitar	¥7,150 (税抜価格 ¥6,500)
IABB540-BK	POWERPAD® gig bag for Ac. Bass	¥8,250 (税抜価格 ¥7,500)

15mm 厚のハード・クッション (POWERPAD) を底面と持ち手反対側面に使用。底面はさらに 10mm 厚の POWERPAD を追加した頑強なダブル・クッション構造を採用したスタンダードなバッグです。



IGB540-BK

IBB540-BK

POWERPAD®**2 in 1 Double bag**

Model	Description	Price
IGB2540-BK	POWERPAD® Double bag for El. Guitar	¥16,500 (税抜価格 ¥15,000)
IGAB2540-BK	POWERPAD® Double bag for El. Guitar & Ac. Guitar	¥18,700 (税抜価格 ¥17,000)

ジッパー・ジョイント方式の2本収納可能バッグ。分割するとそれぞれ背負うことが出来る2本分のシングル・バッグとしても使える、アイデア製品です。耐衝撃に配慮したハード・クッション (POWERPAD) も装備しています。



IGB2540-BK

POWERPAD®**561 gig bag** NEW

Model	Description	Price
IGB561-MGN	POWERPAD® Designer Collection gig bag for El. Guitar	¥7,370 (税抜価格 ¥6,700)
IGB561-NB	POWERPAD® Designer Collection gig bag for El. Guitar	¥7,370 (税抜価格 ¥6,700)

IGB561-MGN

IGB561-NB

**POWERPAD®****541D gig bag**

Model	Description	Price
IGB541D-BK	POWERPAD® Designer Collection gig bag for El. Guitar	¥7,150 (税抜価格 ¥6,500)
IGB541D-BL	POWERPAD® Designer Collection gig bag for El. Guitar	¥7,150 (税抜価格 ¥6,500)
IAB541D-BL	POWERPAD® Designer Collection gig bag for Ac. Guitar	¥8,250 (税抜価格 ¥7,500)

IGB541D-BK

IGB541D-BL

IAB541D-BL



POWERPAD®

“個性と遊び心”をコンセプトにした Designer Collection。
リーズナブルな価格ながらどのモデルも底面にはハード・クッション (POWERPAD) を
装備しています。*
(*POWERPAD の厚さや形態については用途別に異なります。)

541 gig bag

Model	Description	Price
IGB541-BE	POWERPAD® Designer Collection gig bag for El. Guitar	¥6,270 (税抜価格 ¥5,700)
IGB541-BK	POWERPAD® Designer Collection gig bag for El. Guitar	¥6,270 (税抜価格 ¥5,700)
IGB541-BR	POWERPAD® Designer Collection gig bag for El. Guitar	¥6,270 (税抜価格 ¥5,700)
IGB541-DB	POWERPAD® Designer Collection gig bag for El. Guitar	¥6,270 (税抜価格 ¥5,700)
IGB541-MGN	POWERPAD® Designer Collection gig bag for El. Guitar	¥6,270 (税抜価格 ¥5,700)
IGB541-NB	POWERPAD® Designer Collection gig bag for El. Guitar	¥6,270 (税抜価格 ¥5,700)
IGB541-WR	POWERPAD® Designer Collection gig bag for El. Guitar	¥6,270 (税抜価格 ¥5,700)



BE (Beige)



BK (Black)

BR (Brown)

DB (Deep Blue)

MGN (Moss Green)

NB (Navy Blue)

WR (Wine Red)

Model	Description	Price
IBB541-BE	POWERPAD® Designer Collection gig bag for El. Bass	¥7,370 (税抜価格 ¥6,700)
IBB541-BK	POWERPAD® Designer Collection gig bag for El. Bass	¥7,370 (税抜価格 ¥6,700)
IBB541-NB	POWERPAD® Designer Collection gig bag for El. Bass	¥7,370 (税抜価格 ¥6,700)
IBB541-WR	POWERPAD® Designer Collection gig bag for El. Bass	¥7,370 (税抜価格 ¥6,700)



IBB541-NB

Model	Description	Price
IAB541-BE	POWERPAD® Designer Collection gig bag for Ac. Guitar	¥7,370 (税抜価格 ¥6,700)
IAB541-BK	POWERPAD® Designer Collection gig bag for Ac. Guitar	¥7,370 (税抜価格 ¥6,700)
IAB541-BR	POWERPAD® Designer Collection gig bag for Ac. Guitar	¥7,370 (税抜価格 ¥6,700)
IAB541-MGN	POWERPAD® Designer Collection gig bag for Ac. Guitar	¥7,370 (税抜価格 ¥6,700)
IAB541-WR	POWERPAD® Designer Collection gig bag for Ac. Guitar	¥7,370 (税抜価格 ¥6,700)



IAB541-BE

Model	Description	Price
IHB541-BK NEW	POWERPAD® Designer Collection gig bag for Full Hollow Guitar	¥7,370 (税抜価格 ¥6,700)
IHB541-BR NEW	POWERPAD® Designer Collection gig bag for Full Hollow Guitar	¥7,370 (税抜価格 ¥6,700)



IHB541-BK

Model	Description	Price
IUBS541-GY	POWERPAD® Designer Collection gig bag for Soprano Style Ukulele	¥3,300 (税抜価格 ¥3,000)
IUBS541-NB	POWERPAD® Designer Collection gig bag for Soprano Style Ukulele	¥3,300 (税抜価格 ¥3,000)
IUBS541-WR	POWERPAD® Designer Collection gig bag for Soprano Style Ukulele	¥3,300 (税抜価格 ¥3,000)
IUBC541-BE	POWERPAD® Designer Collection gig bag for Concert Style Ukulele	¥3,300 (税抜価格 ¥3,000)
IUBC541-NB	POWERPAD® Designer Collection gig bag for Concert Style Ukulele	¥3,300 (税抜価格 ¥3,000)
IUBC541-WR	POWERPAD® Designer Collection gig bag for Concert Style Ukulele	¥3,300 (税抜価格 ¥3,000)
IUBT541-BK	POWERPAD® Designer Collection gig bag for Tenor Style Ukulele	¥3,850 (税抜価格 ¥3,500)
IUBT541-WR	POWERPAD® Designer Collection gig bag for Tenor Style Ukulele	¥3,850 (税抜価格 ¥3,500)

「肩掛け」仕様のシングル・ストラップのウクレレ・バッグ。



IUBS541-GY

IUBS541-NB

IUBS541-WR

IUBT541-BK

IUBC541-BE

IUBC541-NB

IUBC541-WR

IUBT541-WR

Model	Description	Price
IUBS542-BE	POWERPAD® Designer Collection gig bag for Soprano Style Ukulele	¥3,850 (税抜価格 ¥3,500)
IUBC542-BK	POWERPAD® Designer Collection gig bag for Concert Style Ukulele	¥3,850 (税抜価格 ¥3,500)
IUBC542D-BL	POWERPAD® Designer Collection gig bag for Concert Style Ukulele	¥3,850 (税抜価格 ¥3,500)
IUBT2542-NB	POWERPAD® Designer Collection double bag for Tenor Style Ukulele	¥8,140 (税抜価格 ¥7,400)

「両肩掛け」が可能なダブル・ストラップ (リュック・タイプ) のウクレレ・バッグ。



IUBS542-BE

IUBC542-BK

IUBC542D-BL



IUBT2542-NB



IUBT2542-NBは、独立した2個のバッグに分離可能。1本ずつ持ち運ぶ事も可能です。
外側(上側)のバッグには着脱可能なサイズ補正用のU字型クッションを装備し、
コンサート・サイズに合わせた内寸でお使いいただけます。

Model	Description	Price
IPB541-BK	POWERPAD® Designer Collection Bag for Musician's Various Gadget	¥5,170 (税抜価格 ¥4,700)
IPB541-NB	POWERPAD® Designer Collection Bag for Musician's Various Gadget	¥5,170 (税抜価格 ¥4,700)
IPB541-MGN	POWERPAD® Designer Collection Bag for Musician's Various Gadget	¥5,170 (税抜価格 ¥4,700)



BK (Black)



NB (Navy Blue)

MGN (Moss Green)

Foamed Case

Model	Description	Price
FS40UC	for Concert style Ukulele	¥8,800 (税抜価格 ¥8,000)

ツイード調外装のウクレレ用フォームド・ケースです。内装は側面、蓋面、底面すべてを樹脂製フォームで構成しており、内面はすべてソフトな起毛仕上げです。

- 使用しないときは格納可能な両肩掛け用ストラップを装備
- メイン・ハンドルに加え、縦持ち用のサブ・ハンドルを背面に装備



Molded Case

Model	Description	Price
MR500C	Q, AZ, AZS, RG, RGA, RGD, S, SA, TM の6弦/7弦/8弦/9弦モデル(左利きモデル含む)	¥33,000 (税抜価格 ¥30,000)
MRB500C	SR, SRH, EHB, BTB, SRMS, TMB の4弦/5弦/6弦モデル(左利きモデル含む), BTB7 *EHB1000S及びTMB35は格納できません。	¥38,500 (税抜価格 ¥35,000)

付属するパッドを付け替えることで様々なシェイプ/形状、および弦数のエレクトリック・ギターやエレクトリック・ベースを格納可能。

- ロック部分にはグローバルな施錠機構であるTSAロックを採用
- 内部インナーは愛機を傷から守るファー(起毛)生地を採用
- アクセサリ収納用のツール・ケース付属



MR500C



MRB500C

Picks

Pick Actual Size



JTC Picks

Model	Shape	Thickness	Material	Color	Price
JTC1	Teardrop	2.5mm	Tritan™	-	¥220 (税抜価格 ¥200)
JTC1R	Teardrop	2.5mm	Tritan™	AMT/ONX	¥220 (税抜価格 ¥200)
PJTC1	Teardrop	2.5mm	Tritan™ (6pcs/set)	-	¥1,320 (税抜価格 ¥1,200)
PJTC1R	Teardrop	2.5mm	Tritan™ (6pcs/set)	MX1	¥1,320 (税抜価格 ¥1,200)

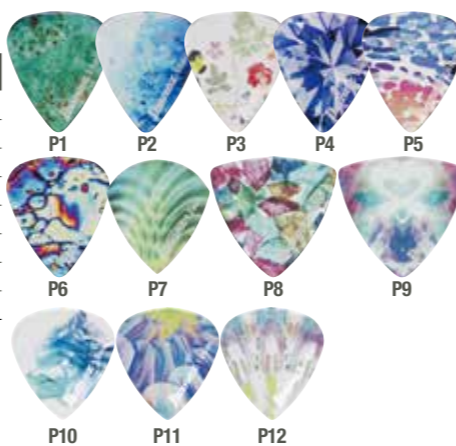
IbanezとJTCのコラボレーションによって実現した新次元ピック。何種類ものサンプルを作成し、JTCアーティスト達との試行錯誤を経て完成した、ギタリストのための「THE PLAYERS PICK」です。JTC1は、Ibanez KALEIDOシリーズのピックをベースとして、Tritan™と呼ばれるコポリエステル素材を使用した2.5mmの極厚仕様。素早いピッキングを可能とすると共に、ハイブリッドピッキングとも親和性が高く、安定したトーンを生み出します。



KALEIDO Series

Model	Shape	Thickness	Material	Color	Price
CP14MH	Teardrop	Medium Heavy (0.88mm)	Tritan™	P1/P2/P3/P4/P5/P6	¥110 (税抜価格 ¥100)
CP14H	Teardrop	Heavy (1.0mm)	Tritan™	P1/P2/P3/P4/P5/P6	¥110 (税抜価格 ¥100)
CP14XH	Teardrop	Extra Heavy (1.2mm)	Tritan™	P1/P2/P3/P4/P5/P6	¥110 (税抜価格 ¥100)
CP16H	Short Teardrop	Heavy (1.0mm)	Tritan™	P7/P8/P9/P10/P11/P12	¥110 (税抜価格 ¥100)
CP16XH	Short Teardrop	Extra Heavy (1.2mm)	Tritan™	P7/P8/P9/P10/P11/P12	¥110 (税抜価格 ¥100)
CP18XH	Teardrop	Extra Heavy (1.2mm)	Tritan™	P7	¥110 (税抜価格 ¥100)
CP8MH	Triangle	Medium Heavy (0.88mm)	Tritan™	P8	¥110 (税抜価格 ¥100)
CP8MT	Triangle	Medium Thin (0.73mm)	Tritan™	P9	¥110 (税抜価格 ¥100)

KALEIDOシリーズのピックは、「Tritan™」と呼ばれるコポリエステル素材を使用したピック。「Tritan™」は、ギターピックの素材として初めて採用される新素材であり、ガラスのように透明で、耐久性があり、成形のし易さが特徴です。また、カラフルなデザインもKALEIDOシリーズの大きな特徴で、通常のピックでは表現出来なかった色鮮やかできめ細やかなデザインを実現しました。



GRIP WIZARD Series

Sand Grip Picks

Model	Shape	Thickness	Material	Color	Price
PA16XSG	Short Teardrop	Extra Heavy (1.2mm)	Polyacetal	BK/YE	¥110 (税抜価格 ¥100)
PA16HSG	Short Teardrop	Heavy (1.0mm)	Polyacetal	BK/RD/WH/YE	¥110 (税抜価格 ¥100)
PA16MSG	Short Teardrop	Medium (0.8mm)	Polyacetal	BK/RD/WH/YE	¥110 (税抜価格 ¥100)
PA18XSG	Teardrop	Extra Heavy (1.2mm)	Polyacetal	BK/WH	¥110 (税抜価格 ¥100)
PA18HSG	Teardrop	Heavy (1.0mm)	Polyacetal	BK/WH	¥110 (税抜価格 ¥100)
PA18MSG	Teardrop	Medium (0.8mm)	Polyacetal	BK/WH	¥110 (税抜価格 ¥100)
CE4MS	Triangle	Medium (0.75mm)	Celluloid	BK/SH/WH	¥110 (税抜価格 ¥100)



GRIP WIZARD Series

Rubber Grip Picks

Model	Shape	Thickness	Material	Color	Price
PA16HRG	Short Teardrop	Heavy (1.0mm)	Polyacetal	BK/DB/WH	¥110 (税抜価格 ¥100)
PA16MRG	Short Teardrop	Medium (0.8mm)	Polyacetal	BK/DB/WH	¥110 (税抜価格 ¥100)



ULTEM™ Picks

Thumb Picks

Model	Shape	Size	Material	Color	Price
UL22M	Thumb Pick	Medium	Ultem™	-	¥165 (税抜価格 ¥150)
ULT1	Thumb Pick	Large	Ultem™	-	¥165 (税抜価格 ¥150)



ELASTOMER Picks

Model	Shape	Thickness	Material	Color	Price
EL4ST22	Triangle	2.2mm	Elastomer (Soft) by DU PONT-TORAY	-	¥165 (税抜価格 ¥150)
EL4HD22	Triangle	2.2mm	Elastomer (Hard) by DU PONT-TORAY	-	¥165 (税抜価格 ¥150)
EL8HD10	Triangle	1.0mm	Elastomer (Hard) by DU PONT-TORAY	-	¥165 (税抜価格 ¥150)
EL14ST10	Teardrop	1.0mm	Elastomer (Soft) by DU PONT-TORAY	-	¥165 (税抜価格 ¥150)
EL14ST12	Teardrop	1.2mm	Elastomer (Soft) by DU PONT-TORAY	-	¥165 (税抜価格 ¥150)
EL14HD10	Teardrop	1.0mm	Elastomer (Hard) by DU PONT-TORAY	-	¥165 (税抜価格 ¥150)
EL14HD12	Teardrop	1.2mm	Elastomer (Hard) by DU PONT-TORAY	-	¥165 (税抜価格 ¥150)
EL16ST10S	Short Teardrop	1.0mm	Elastomer (Soft) by DU PONT-TORAY	HBK	¥165 (税抜価格 ¥150)
EL16HD10S	Short Teardrop	1.0mm	Elastomer (Hard) by DU PONT-TORAY	HBK	¥165 (税抜価格 ¥150)
EL18ST12	Teardrop	1.2mm	Elastomer (Soft) by DU PONT-TORAY	-	¥165 (税抜価格 ¥150)
EL18HD12	Teardrop	1.2mm	Elastomer (Hard) by DU PONT-TORAY	-	¥165 (税抜価格 ¥150)
ELJ1ST25	Teardrop	2.5mm	Elastomer (Soft) by DU PONT-TORAY	-	¥165 (税抜価格 ¥150)
ELJ1HD25	Teardrop	2.5mm	Elastomer (Hard) by DU PONT-TORAY	-	¥165 (税抜価格 ¥150)



ELASTOMER Picks Pack

Model	Shape	Thickness	Material	Color	Price
BEL4ST22	Triangle	2.2mm	Elastomer (Soft) by DU PONT-TORAY (3pcs/set)	-	¥495 (税抜価格 ¥450)
BEL4HD22	Triangle	2.2mm	Elastomer (Hard) by DU PONT-TORAY (3pcs/set)	-	¥495 (税抜価格 ¥450)
BEL8HD10	Triangle	1.0mm	Elastomer (Hard) by DU PONT-TORAY (3pcs/set)	-	¥495 (税抜価格 ¥450)
BEL14ST10	Teardrop	1.0mm	Elastomer (Soft) by DU PONT-TORAY (3pcs/set)	-	¥495 (税抜価格 ¥450)
BEL14ST12	Teardrop	1.2mm	Elastomer (Soft) by DU PONT-TORAY (3pcs/set)	-	¥495 (税抜価格 ¥450)
BEL14HD10	Teardrop	1.0mm	Elastomer (Hard) by DU PONT-TORAY (3pcs/set)	-	¥495 (税抜価格 ¥450)
BEL14HD12	Teardrop	1.2mm	Elastomer (Hard) by DU PONT-TORAY (3pcs/set)	-	¥495 (税抜価格 ¥450)
BEL16ST10S	Short Teardrop	1.0mm	Elastomer (Soft) by DU PONT-TORAY (3pcs/set)	HBK	¥495 (税抜価格 ¥450)
BEL16HD10S	Short Teardrop	1.0mm	Elastomer (Hard) by DU PONT-TORAY (3pcs/set)	HBK	¥495 (税抜価格 ¥450)
BEL18ST12	Teardrop	1.2mm	Elastomer (Soft) by DU PONT-TORAY (3pcs/set)	-	¥495 (税抜価格 ¥450)
BEL18HD12	Teardrop	1.2mm	Elastomer (Hard) by DU PONT-TORAY (3pcs/set)	-	¥495 (税抜価格 ¥450)
BELJ1ST25	Teardrop	2.5mm	Elastomer (Soft) by DU PONT-TORAY (3pcs/set)	-	¥495 (税抜価格 ¥450)
BELJ1HD25	Teardrop	2.5mm	Elastomer (Hard) by DU PONT-TORAY (3pcs/set)	-	¥495 (税抜価格 ¥450)

ポリエステル・エラストマーを使用した、新感覚ピック。

- ・強度、高耐久性、良反弾性素材で、擦り減りにくく、弦のはじきやすさは抜群です。
- ・高消音性により、ピッキング時のノイズを従来のピックとは比較にならないほど低減します。
- ・高耐衝撃性により、弦タッチ/あたりが丸く、なめらかでしっとりとした弾き心地を実現します。
- ・素材の硬さはSOFTとHARDの2種類。形状・硬さ・厚みの違う13モデルをラインナップ。



Standard Series

Model	Shape	Thickness	Material	Color	Price
CE6H	Triangle	Heavy (1.0mm)	Celluloid	SH/WH	¥110 (税抜価格 ¥100)
CE6M	Triangle	Medium (0.75mm)	Celluloid	SH/WH	¥110 (税抜価格 ¥100)
CE20H	Jazz Type	Heavy (1.0mm)	Celluloid	SH	¥110 (税抜価格 ¥100)



Round Shape Picks

Model	Shape	Thickness	Material	Color	Price
PA1M	Round	Medium (0.8mm)	Polyacetal	BK/WH	¥110 (税抜価格 ¥100)



Signature Models

Steve Vai

Model	Shape	Thickness	Material	Color	Price
1000SV	Teardrop	Heavy (1.0mm)	Polyacetal featuring "Rubber Grip"	WHR	¥165 (税抜価格 ¥150)
1000SV	Teardrop	Heavy (1.0mm)	Polyacetal	BR	¥110 (税抜価格 ¥100)
1000SV	Teardrop	Heavy (1.0mm)	Polyacetal	GR	¥110 (税抜価格 ¥100)
1000SV	Teardrop	Heavy (1.0mm)	Polyacetal	MP	¥110 (税抜価格 ¥100)



Kiko Loureiro

Model	Shape	Thickness	Material	Color	Price
1000KL	Teardrop	Extra Heavy (1.2mm)	Polyacetal	BK	¥110 (税抜価格 ¥100)
1000KL	Teardrop	Extra Heavy (1.2mm)	Polyacetal	RD	¥110 (税抜価格 ¥100)



Paul Gilbert

Model	Shape	Thickness	Material	Color	Price
2000PG	Short Teardrop	Heavy (1.0mm)	Celluloid	-	¥220 (税抜価格 ¥200)
1000PG	Short Teardrop	Heavy (1.0mm)	Celluloid	-	¥110 (税抜価格 ¥100)
1000PG	Short Teardrop	Heavy (1.0mm)	Celluloid	PW	¥110 (税抜価格 ¥100)
1000PG	Short Teardrop	Heavy (1.0mm)	PVC	CA	¥110 (税抜価格 ¥100)
1000PG	Short Teardrop	Heavy (1.0mm)	Celluloid	JB	¥110 (税抜価格 ¥100)
1000PG	Short Teardrop	Heavy (1.0mm)	Celluloid	BK	¥110 (税抜価格 ¥100)



George Benson

Model	Shape	Thickness	Material	Color	Price
1100GB	Teardrop	Medium (0.75mm)	Celluloid	-	¥110 (税抜価格 ¥100)



John Scofield

Model	Shape	Thickness	Material	Color	Price
1000JS	Jazz Type	Heavy (1.0mm)	PVC	-	¥110 (税抜価格 ¥100)



Okuda Tamio

Model	Shape	Thickness	Material	Color	Price
TAMIO	Triangle	Medium (0.75mm)	Celluloid	A2	¥110 (税抜価格 ¥100)
TAMIO	Triangle	Medium (0.75mm)	Celluloid	RC1	¥110 (税抜価格 ¥100)



Mito (clammbon)

Model	Shape	Thickness	Material	Color	Price
MITO-EL1	Triangle	1.0mm	Elastomer (Hard) by DU PONT-TORAY	-	¥165 (税抜価格 ¥150)
MITO-UL1	Triangle	Thin (0.6mm)	Ultem™	-	¥165 (税抜価格 ¥150)



Accessories & Tools

Intonation Adjuster

Model	Description	Price
EJK1000	E-JACK Intonation Adjuster for Edge, Lo-Pro Edge, Edge-Pro tremolo bridge	¥5,500 (税抜価格 ¥5,000)

E-JACKは、Ibanezオリジナル・トレモロ・ブリッジのために設計されたイントネーション調整ツールです。本体のツメをサドルとファインチューナーの2カ所に取り付けることによりサドルが固定され、弦を緩めることなくイントネーションを調節することが可能になります。



Tremolo Spring

Model	Description	Price
ESPR1003	E-SPRING Teflon Plated Edge Tremolo Spring (3pcs/set)	¥2,750 (税抜価格 ¥2,500)
ESPR2003	E-POWER SPRING Teflon Plated Edge Tremolo Spring (3pcs/set)	¥2,750 (税抜価格 ¥2,500)

長らく使用することによって生じてくるスプリングの腐食は、スプリング自体の性能の低下と、それによるチューニングの安定性低下をもたらします。E-SPRINGは、表面にテフロン加工を施すことによって腐食を防ぎ、長期間にわたる快適な使い心地を約束します。



Multi Tool

Model	Description	Price
MTZ11	11 tools, 94 x 35 x 32(mm)	¥2,420 (税抜価格 ¥2,200)
MTZ11-BBK	11 tools, 94 x 35 x 32(mm)	¥2,420 (税抜価格 ¥2,200)

現場でのギター調整を目的とし、使い勝手や精度、耐久性を高めた本格的セットアップツール「MTZ11」。スイス・アーミーナイフを彷彿とさせる真紅のボディは中央部にアクセス・ホールを設け、11種にわたる工具を容易にピックアップ出来るよう、又、軽量化を果たすよう工夫しています。

a	六角レンチ(5.0mm)	g	パイプレンチ(7.0mm)
b	六角レンチ(4.0mm)	h	ドライバー(+ネジ/大)
c	六角レンチ(3.0mm)	i	ドライバー(+ネジ/小)
d	六角レンチ(2.5mm)	j	ドライバー(-ネジ)
e	六角レンチ(2.0mm)	k	スケール(JIS規格)
f	六角レンチ(1.5mm)		



Prestige Fret File Set

Model	Description	Price
4450JX	for Jumbo frets	¥6,050 (税抜価格 ¥5,500)
4450LX	for Large frets	¥6,050 (税抜価格 ¥5,500)
4450SX	for Small frets	¥6,050 (税抜価格 ¥5,500)

フレット山の加工調整に適したフレット・ファイル(ヤスリ)。高精度/高品質の日本製。

※フレットの加工は専門の技術と高い精度を要する加工であり、誰もが簡単に万全な精度で加工できるわけではありません。またフレットファイルは、鋭利な部分も備えた金属製品です。誤った使用法は思わぬ事故、怪我を招きます。併せて弊社では、上記製品を用いた加工時に万一発生した事故に関し一切の責任を負いません。予めご了承のうえお求めください。



Prestige Nut File Set

Model	Description	Price
4449EG6X	for El.Guitar (.009/.011/.016/.024/.032/.042)	¥14,850 (税抜価格 ¥13,500)
4449EG61X	for El.Guitar (.010/.013/.017/.026/.036/.046)	¥14,850 (税抜価格 ¥13,500)
4449EG4EXX	for El. Guitar (.054/.065/.075/.090)	¥10,450 (税抜価格 ¥9,500)
4449EB6X	for El.Bass (.032/.045/.065/.085/.105/.130)	¥16,500 (税抜価格 ¥15,000)
4449AC6X	for Ac.Guitar (.012/.016/.024/.032/.042/.053)	¥14,850 (税抜価格 ¥13,500)
4449CG6X	for Classical Guitar (.028/.032/.040/.030/.036/.042)	¥14,850 (税抜価格 ¥13,500)
4449UC4X	for Ukulele (.025/.032/.036/.028)	¥10,450 (税抜価格 ¥9,500)

Ibanezのスタンダードな弦ゲージに対応したナット・ファイル(ヤスリ)。
高精度/高品質の日本製。

※ナットの溝切りは専門の技術と高い精度を要する加工であり、誰もが簡単に万全な精度で加工できるわけではありません。またナットファイルは、鋭利な部分も備えた金属製品です。誤った使用法は思わぬ事故、怪我を招きます。併せて弊社では、上記製品を用いた加工時に万一発生した事故に関し一切の責任を負いません。予めご了承のうえお求めください。



Tremolo Arm

Model	Description	Price
UTA20	Ultralite Tremolo Arm™	¥7,700 (税抜価格 ¥7,000)

Joe Satriani や Steve Vai らも愛用する、軽量かつ耐久性に富むカーボンファイバー製のアームグリップ。その軽さと握りやすいためのグリップにより、繊細なアーム操作を可能にします。

■対象ブリッジ :Edge / Lo-Pro Edge / Edge-Pro / Edge-Zero / SynchroniZR / ZR-2 / T1802 / T1502 / T18027S / T1702B



Guitar Cloth

Model	Description	Price
IGC100 <small>NEW</small>	Microfiber Guitar Cloth, 300x300(mm)	¥605 (税抜価格 ¥550)



Fret Cleaner

Model	Description	Price
IFC1000	Fret Shine & Brush Set	¥1,650 (税抜価格 ¥1,500)

しばらく弾かなかったギターのフレットに、錆びはつきものです。本製品は皮革メンテナンス製品からヒントを得て完成した"消しゴムタイプの粉やすり入りクリーナー"と、指板面の細かなゴミを掃き出す"ブラシ"のセットです。(クリーナー:2個、ブラシ:1個)



Guitar Stands



TAMA Guitar Stand

839

マイクスタンドと同じ構造を三脚部に採用することで、抜群の安定性を獲得したプロ・グレードのギター・スタンド。

¥11,000 (税抜価格 ¥10,000)



Ibanez Electric/Acoustic Guitar and Bass Stand

ST101

エレキギター・ギター / ベースを立掛けることもアコースティック・ギター / ベースを立掛けることも可能なコンパクト・スタンド。

¥2,530 (税抜価格 ¥2,300)



Pocket Titan Solid Guitar Stand

PT32

一般的なギター・バッグのポケットに収納可能な、Ibanez で最もコンパクトなスタンド。

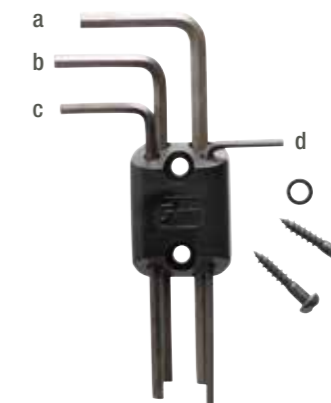
¥2,090 (税抜価格 ¥1,900)

Wrench Holder Set

Model	Description	Price
WHS4	Wrench Holder Set	¥1,320 (税抜価格 ¥1,200)

a	六角レンチ(3.0mm)
b	六角レンチ(2.5mm)
c	六角レンチ(2.0mm)
d	六角レンチ(1.5mm)

4種類(1.5mm / 2mm / 2.5mm / 3mm)のサイズがセットになった、日本製レンチホルダーセット。トレモロ・ブリッジの弦交換や調整、サドルの弦高調整などに使用できます。ヘッドの裏などに取り付け可能なビスも付属しています。取り付け用ビス 2本 / レンチ 各種4本 付属。



Soundhole Cover

Model	Description	Price
ISC1	Soundhole Cover (100mm - 102mm)	¥660 (税抜価格 ¥600)

- 高強度・高耐久性・良反発弾性素材のエラストマーを使用
- 100mmから102mm直径のサウンドホールに対応

※100mmから102mm直径のサウンドホールであっても、指板エンドがサウンドホール付近まで延びている形状など、一部のアコースティック・ギターにおいて装着できない場合がございます。お求めの際は、必ずご自身のギターを確認してください。

※ISC1は、塗装への影響を最小限に留めた素材を採用しておりますが、高温多湿の環境下などで、長期間に渡り、サウンドホールカバーを装着した状態での保管をされますと、塗装に影響を与える可能性もございます。ご注意ください。



Capo

Model	Description	Price
IGCZ20	Guitar Capo	¥2,200 (税抜価格 ¥2,000)
ICGC10	Universal capo for steel and nylon string guitars	¥2,200 (税抜価格 ¥2,000)
IGCZ20W	Guitar Capo	¥2,200 (税抜価格 ¥2,000)
ICGC10W	Universal capo for steel and nylon string guitars	¥2,200 (税抜価格 ¥2,000)

ICGC10 / ICGC10W



for steel strings

for nylon strings



Guitarist Throne

Model	Description	Price
IMC50FS	Foldable Throne with guitar stand function	¥8,800 (税抜価格 ¥8,000)

エレキ・ギター、ベース、アコースティック・ギターを縦置きできるスタンド機構を備えたフォルダブル(折り畳み式)スローンです。

- 高さ: 650mm (座面の高さ含む)



Lifestyle

Ibanez Logo T-shirt

Model	Description	Price
IBAT007S	Ibanez Logo T-shirt Black S size	¥2,750 (税抜価格 ¥2,500)
IBAT007M	Ibanez Logo T-shirt Black M size	¥2,750 (税抜価格 ¥2,500)
IBAT007L	Ibanez Logo T-shirt Black L size	¥2,750 (税抜価格 ¥2,500)
IBAT007XL	Ibanez Logo T-shirt Black XL size	¥2,750 (税抜価格 ¥2,500)



Ibanez Logo Mug

Model	Description	Price
IBAM001	Ibanez Logo Mug	¥2,200 (税抜価格 ¥2,000)



Ibanez Cup Coaster

Model	Description	Price
ICT10RG	Ibanez Cup Coaster (4-Pack Assortment)	¥1,980 (税抜価格 ¥1,800)

NEW



Ibanez Logo Key Chain

Model	Description	Price
IKC10LG	Ibanez logo key chain	¥605 (税抜価格 ¥550)





Ivan
Survive Said The Prophet



磯貝 一樹



小川 翔



KANAKO YAMAMOTO



Kan INOUE
WONK



休日課長
ゲスの極み乙女。 , DADARAY, ichikoro



齋藤 大陽
Noel Schajris, Jesus Molina



関谷 友貴
TRI4TH, 黒船



Gucci
AIRFLIP



Kuboty



KO-TA
SWANKY DANK



是永 巧一
REBECCA



鳥越 啓介



永田 雄樹
JABBERLOOP, POLYPLUS, ADAM at



HIDEYAN
Calmera



Bitoku
Sailing Before The Wind



佐々木 秀尚
TRIX, 有形ランペイジ



関口 シンゴ
Ovall



Tack朗
ヒステリックパニック



Chiaki
水中スピカ



Masa
NOCTURNAL BLOODLUST



mito
clambbon



山田 剛
jizue



Yuki Atori



Tsubasa
Paledusk



TJ
HER NAME IN BLOOD



西崎 ゴウシ伝説
Calmera



HAZUKI
Li-sa-X BAND, NEMOPHILA



井草 聖二



臼井 ミトン



江頭 勇哉



KOYUKI



平賀 優介
Arise in Stability, GUITARISTS ON DEMAND, 摩天楼オペラ , sprt



ぼにきんぐだむ
オメでたい頭でなにより



丸山 漢
a crowd of rebellion



324
オメでたい頭でなにより



まるやまたつや



Rei
Newspeak



生形 真一
Nothing's Carved In Stone, ELLEGARDEN



カナ
CHAI



宮本 敦
Calmera



YOUSAY
UGRA



吉田 喜一
神はサイコロを振らない



Li-sa-X



岸田 繁
くるり



隅垣 元佐
SANABAGUN.



345
凜として時雨



ユウキ
CHAI



IKKE
SCAFULL KING, sprt.



大林 亮三
SANABAGUN.



落合 Kit 慶太
The Hey Song



Kamikaze Boy
MAN WITH A MISSION



EBI
UNICORN



ABEDON
UNICORN



奥田 民生
UNICORN



手嶋 いさむ
UNICORN