

Toledo Museum of Art

Annual Report 2010



Good for you. TMA



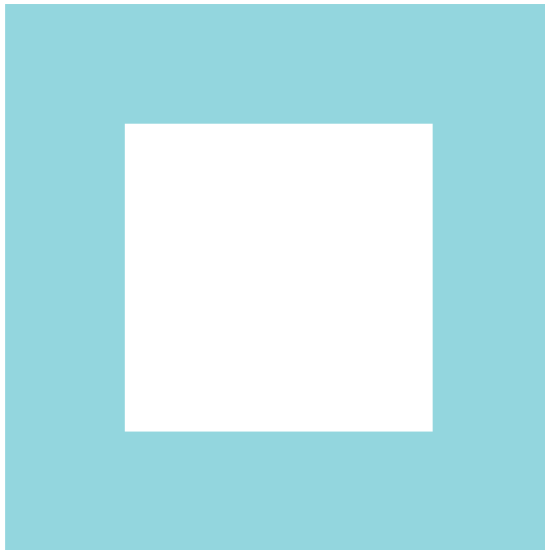
America's Favorite Art Museum

KIERAN

Going to TMA becomes a lifelong tradition.

A big title, to be sure. What began as a light-hearted diversion on a popular art blog quickly turned into a display of how passionately Toledoans feel about their Museum. Not only did TMA fans vote for their beloved institution in large numbers, they took to the web to extol the many virtues of the Toledo Museum of Art on the Modern Art Notes message boards. Many of those comments are shared throughout this report.

The power of positive memories is one that new director Brian Kennedy harnessed with his strategic planning process. In order to get TMA supporters thinking about the future, he had them reminisce about the great accomplishments of the past. So here's to some of your favorite things, past and present.



All comments in this report were posted by TMA supporters on the blog Modern Art Notes during the summer of 2010.



JANET YOUNG

I love the TMA, I've been going there for 43 years.

KERRY

The TMA is special.



MEL BRYANT

The Toledo Museum of Art's awe-inspiring and historically significant collection is accessible to everyone.

RANDY MYERS

I appreciated the Egyptian art as a child. Anytime I'm back in Toledo I stop to visit my "old friend".



Throughout America, there are many different kinds of Museums. Some are tourist destinations that have relatively little involvement from their local communities. Others have extraordinary attachment to their community and region, but are not so much on the tourism trail. The Toledo Museum of Art is a superb example of a museum that attracts visitors from near and far but also, in particular, enjoys the deep-rooted attachment of the people of northwest Ohio and southeast Michigan.

For 109 years, the Museum has provided, free of charge, access to one of the world's great art collections. In 2010, the Toledo Museum of Art found itself voted "America's Favorite Art Museum" in an online competition held by Tyler Green's blog, Modern Art Notes. It was affirmation of the strength of feeling held by Toledoans about their local museum. It took thousands of votes to win that competition, and it is noteworthy that the runner up was the Clark Art Institute in Williamstown, MA, another wonderful example of a superb art collection held dearly by its own community.

A museum is a seat of memories, home to places and moments where enrichment occurs. In the fall of 2010, the Toledo Museum of Art conducted an extensive strategic planning process involving the participation of hundreds of people who gave thousands of replies to a series of questions. The first question asked of the community was to consider their best and fondest memories of the Museum. This solicited marvelous stories of experiences gained in the Great Gallery, Classic Court, Cloister Gallery, Peristyle Theater and the Sculpture Garden.

These five spaces contain a wealth of memories and offer an insight into why 435,000 people visited the Toledo Museum of Art in 2010. Many visited because they have always done so, making the Museum part of their lives over many years. Others engaged for the first time by making beads for the Bead Goes On Project. All experienced the opportunity to engage with the art collections, whether the early Egyptian objects collected by the Museum's founders, Mr. and Mrs. Libbey, or such recent acquisitions as the Aminah Robinson artist books.

Museums look back with respect to their traditions, and look forward constantly in embracing the educational needs of children and lifelong learners. We have much of which to be proud and yet much work to do. We offer ongoing opportunities, free of charge, to engage in personal interaction with inspiring works of art: the products of the most active minds and capable makers over generations. In short, we help to engage the processes of critical thinking by making art memories. Enjoy this annual report to see how memories were made at the Toledo Museum of Art in 2010.

16,328

facebook fans

456

works were added to the collection

808

volumes were added to the library that served 8,857 patrons

435,669

total number of TMA visitors

64

loans were extended to other institutions

636

public programs drew 49,930 participants

17,693

children and 12,197 adults visited the Family Center

6,936

images were added to the Visual Resources Collection

1,226

people took public or adult group tours

22,498

students and teachers visited on school tours

New Director 8

Egypt Experience 11

Wolfe Gallery 12

Bead Project 15

America's Favorite 16

Temporary Exhibits 20

Acquisitions 22

2009–10 Finances 24

Donor Lists 25



JAN CROOKER

*I am an artist today
because of the great
children's art program at
the Toledo Museum of Art.*

Brian Kennedy Becomes Ninth Director

The arrival of the Museum's ninth director in September touched off a whirlwind of activity as Brian P. Kennedy began work on a strategic plan by eliciting ideas from numerous stakeholder groups.

Dr. Kennedy, previously director of Dartmouth College's Hood Museum of Art in Hanover, N.H. (2005–2010), and of the National Gallery of Australia (1997–2004), sought to identify key areas where the Museum needs to put its energy, said Betsy Brady, board chair. As part of that, 400 people were asked to respond to 10 questions, ranging from their best and fondest memories of the Museum, to what could be done to better use the Peristyle. Each also was asked to envision the Museum in 2015 and to describe what might be different about it compared to 2010.

Their answers were incorporated into "A Design Vision for the Toledo Museum of Art," presented to board members in December 2010. Among the plan's objectives are expanding access to the Museum's art collections, particularly digitally; increasing visibility to all audiences; teaching visual literacy; leveraging the Museum's assets: people, buildings, collections, and finances; and working with contemporary artists.

"It's been a wonderful process," Ms. Brady said, adding that the plan developed by Dr. Kennedy is ambitious, but achievable. "He has a clear sense about how it can be accomplished. He believes the resources will follow if we have great ideas."

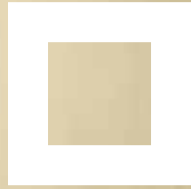
Dr. Kennedy, who formerly oversaw one of the largest and finest art collections at an American college or university, decided to implement some of the ideas that were proposed immediately, among them, providing higher level donors with parking cards so they do not have to obtain a token each time they visit, and improving the ambience and traffic flow of the Herrick Lobby entrance.

The board chair said Dr. Kennedy moves comfortably between the scholarly milieu of art and the business model. In addition, he has a collaborative style that actively seeks the opinions of others. "He's always looking ahead," Ms. Brady said. "He has a very solid thought process and he also listens" She said Dr. Kennedy was chosen because he understood TMA's goal of being a great museum of the 21st century. "We really wanted somebody who got that and was very forward-looking and visionary in terms of how to appeal to today's audiences, donors, and the community. He brought all that."

Brian Kennedy became the ninth director in TMA history on September 1, 2010, bringing with him a strong interest in engaging the community and creating a shared vision.



AMERICA'S FAVORITE ART MUSEUM



AMERICA'S FAVORITE ART MUSEUM



Toledoans Love All Things Egypt

Museum-goers have expressed a continued fascination with Egyptian culture.

When Egyptologist Robert Brier spoke at the Museum in 2009, more than 600 people came to hear him. Following his appearance, Sandra E. Knudsen, associate curator of ancient art, and others began exploring the idea of a special show on ancient Egyptian art centered around Egyptian beliefs about life and the afterlife. And so *The Egypt Experience: Secrets of the Tomb* was born. The exhibition showcases 300 objects, 50 of which are on loan from four other museums.

Locating the exhibition in a space comprising the former Collector's Corner, the Little Theater lobby, and another small foyer required tearing out walls and building new ones, refinishing an existing cork floor previously covered with carpeting, and installing new wiring, recessed track lighting, and a heating and cooling system.

"It really was a major effort," said Claude Fixler, Museum exhibition designer. "We had to create a new gallery, a space conducive to thinking that you're walking through a tomb. To try to simulate the whole experience so you're transported away from the present day was a big challenge."

Typically, Mr. Fixler said, the Museum has several years to put together such a show, but in this case, the work was done over about six months' time.

The Egypt Experience tells the stories of 12 characters in the display's exhibits to portray the Egyptian practice of building tombs as eternal homes furnished with beautiful and useful objects. Two of the exhibition's most popular features have been a re-creation of the tomb chapel of the court official Akhet-hotep, and a passageway to the underworld where visitors listen to the "negative confessions" Egyptians believed they would have to make before entering the afterlife.

The Egypt Experience is sponsored in part by:



Wolfes Continue Legacy of Museum Support

With the help of a \$2 million gift from Frederic “Fritz” and Mary Wolfe in 2010 and Museum funds, the former Glass Gallery will soon be transformed into a home for the contemporary art collection.

Amy Gilman, curator of contemporary art, said most of the new gallery, except for a mezzanine, will be two stories high, allowing the installation of oversized contemporary pieces. Currently, she said, there is no space within the Museum that is ideal for such works. “Artists do all kinds of wonderful large-scale things but right now, we can’t accommodate those things because there’s nowhere to show them.”

Ms. Gilman said it has not yet been determined what works will be installed in the gallery, although the goal is to keep its use flexible. “The design of the space is intended to be as simple and elegant as possible to enable us to do the broadest range of activities there.”

She added that it is unusual for a museum of TMA’s age and neoclassical design to be able to add gallery space on the main floor without building another structure. “Really, we are reclaiming space. It allows us to grow without having to invest in another building.”

The design of the new gallery has been a collaborative process among Thomas Porter Architects, Duket Architects Planners, and Museum staff. The design is both people- and environmentally friendly. In addition to having both an elevator and a staircase to reach the upper level, plans call for low- or no-VOC paint finishes and flooring; energy efficient systems for heating and cooling; LED and energy efficient lighting; and other operating efficiencies.

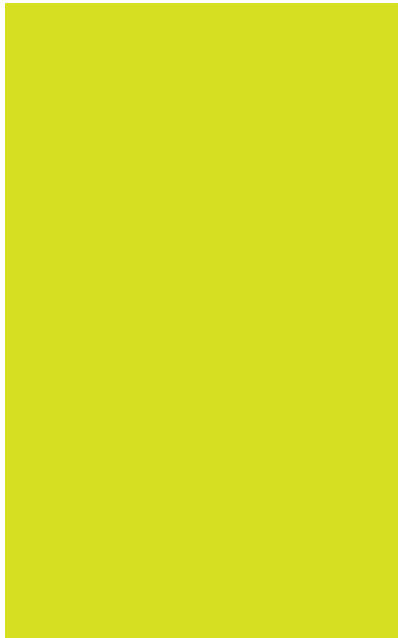
The gift was announced on May 20, 2010 and construction should be completed by the end of 2011. To recognize their leadership to the Toledo Museum of Art, the new gallery will be known as the Frederic and Mary Wolfe Gallery.

Carol Bintz, chief operating officer, said the Wolfes, who are dedicated Museum supporters, chose to direct their gift toward a new contemporary gallery because of their own great love for art. Fritz Wolfe served 27 years on the Museum board and Mary Wolfe co-chaired the 100th anniversary celebration in 2001.



Longtime Museum supporters Mary and Fritz Wolfe donated \$2 million as a lead gift to renovate the former glass gallery into a new home for contemporary art.





Artists from around the region and around the world contributed beads to the Museum's Bead Goes On project. Many participants became involved through the Community ArtReach program targeting underserved groups.

Bead Project Strings Together Community

From kindergartners to cancer patients to noted glass artists, people from the local community and beyond contributed works of art for the Bead Goes On, an art installation created for the Museum by more than 2,300 artists and enthusiasts.

Conceived by glass artist Robin Schultes as a way to allow people to make a small work of art that could become part of the larger Museum, the project started in 2009 with a strand of beads created by Ms. Schultes' glass students and grew to include diverse groups from the region and beyond.

To gather the beads, Ms. Schultes contacted artists who work in ceramics, glass, polymer clay, and mixed media, and Jennifer Bandeen, community outreach coordinator, organized 70 bead making workshops for about 1,000 people, including children with vision impairments and autism, Alzheimer's patients, and youth at the Lucas County Juvenile Detention Center. Together, seasoned and budding artists made hundreds of beads that were strung on three metal frames.

Using stainless-steel cord and small aluminum spacers, Ms. Schultes, with Ms. Bandeen's help, strung thousands of beads on the frames made by in-house artist Hans Ruebel. Ms. Schultes said she aimed for the kind of flow that would not let the viewer's eye rest in one place too long, and she chose the beads at random with no idea of who created them. "You have kindergartners' work next to famous artists," she said.

The project contains all manner of shapes and designs, from a toy Hot Wheels car to birds, hearts, mushrooms, and tiny wooden-block paintings. "It represents to me a world project that is Toledo-based because the majority of the beads are from our community," Ms. Schultes said. "But we also have beads all the way from Australia, a few from Japan, some from Europe, and from all over the U.S. and Canada. It was amazing to see all these people come together."

The finished piece—15 feet wide by 8 feet tall—made its debut in the former StARTing Place gallery and was later moved to the Libbey Court. It is now in storage, awaiting a permanent home within the Museum.

By inviting community participation in the Bead Goes On project, Ms. Bandeen's motive was to reach those who normally don't visit the Museum. She was moved many times during the workshops by her encounters with the bead makers. Among them was a distinguished-looking man at an Alzheimer's facility who, she was told by a volunteer, never participated in art activities. "When I stood up and started talking about the Museum, he walked over, sat down, and made several beads."

The Bead Goes On was sponsored in part by Mercy.



TMA is America's Favorite Art Museum

An online poll intended as a summer diversion instead shifted the attention of the art world, if temporarily, to Toledo. TMA fans from across the country banded together to vote for their Museum and share their memories and opinions of why the Toledo Museum of Art is their favorite.

The online tournament was the creation of art critic and blogger Tyler Green (Modern Art Notes), who introduced the contest in July 2010 after promoting a similar competition that identified America's favorite abstract artists during the NCAA basketball tournament. To find America's Favorite Art Museum, he and two other art critics identified 64 of their own favorites, ranked and slotted them into a bracket system, and opened the voting to readers.

Initially seeded No. 32, Toledo defeated No. 33, the Virginia Museum of Fine Arts, in the first round. TMA supporters then voted in sufficient numbers to beat out such venerable institutions as the #1 ranked Metropolitan Museum of Art, the Museum of Contemporary Art (MOCA), Los Angeles and the Cleveland Museum of Art. Toledo finally won the title by beating the No. 22 ranked Clark Art Institute.

Mr. Green estimates that more than 75,000 votes were cast during the tournament, including 5,000-plus in the final.

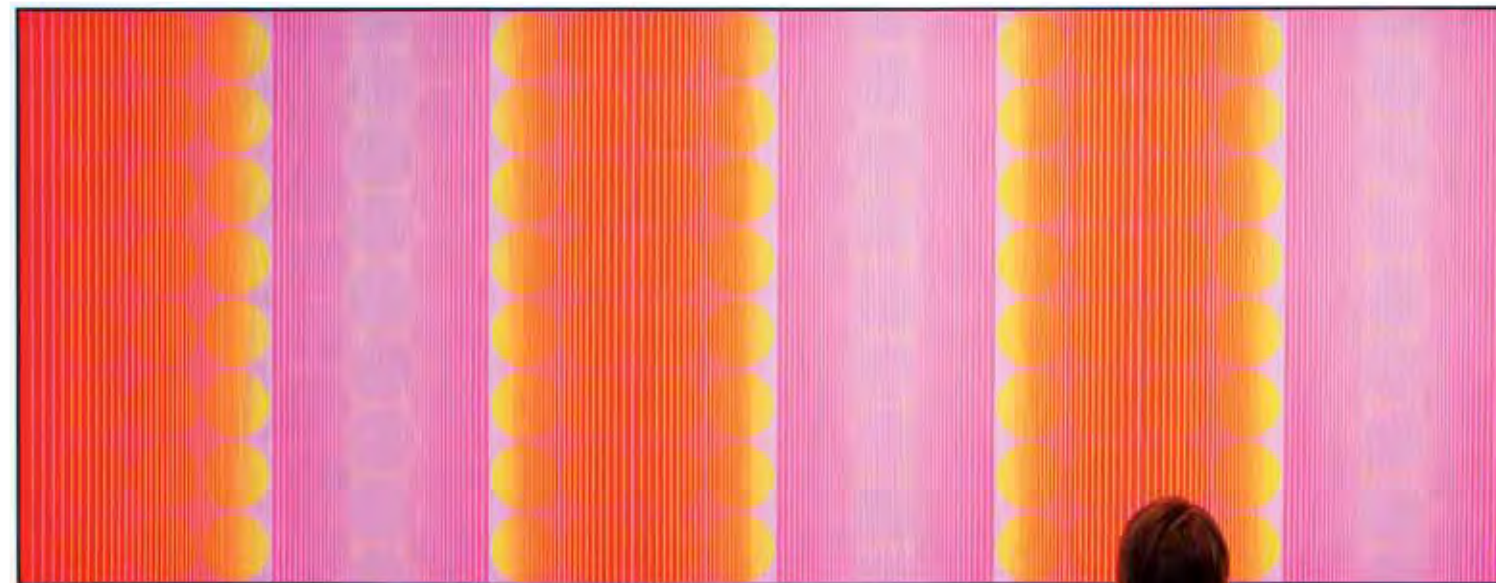
Kelly Fritz Garrow, TMA director of communications, said apart from an email to a server list and postings on Facebook and Twitter, the Museum did not need to do much to promote the contest. "We get weekly postings on our Facebook page from people who grew up in Toledo or lived here some of their life and the Museum had an impact on them. They talk about the classes they took, coming as a child on field trips, or with a grandparent or parent. People have a passion for this Museum and are more than willing to share just how much it has meant to them."

Ms. Garrow said the Museum's entire social media presence, including the America's Favorite Art Museum win, helped boost TMA attendance 26 percent from 2009 to 2010. In addition, the contest also boosted staff morale and increased the Museum's visibility.

To celebrate the championship, staff members were given "I work at America's Favorite Art Museum" T-shirts, and street banners announcing the title were posted outside the Museum.



AMERICA'S FAVORITE ART MUSEUM



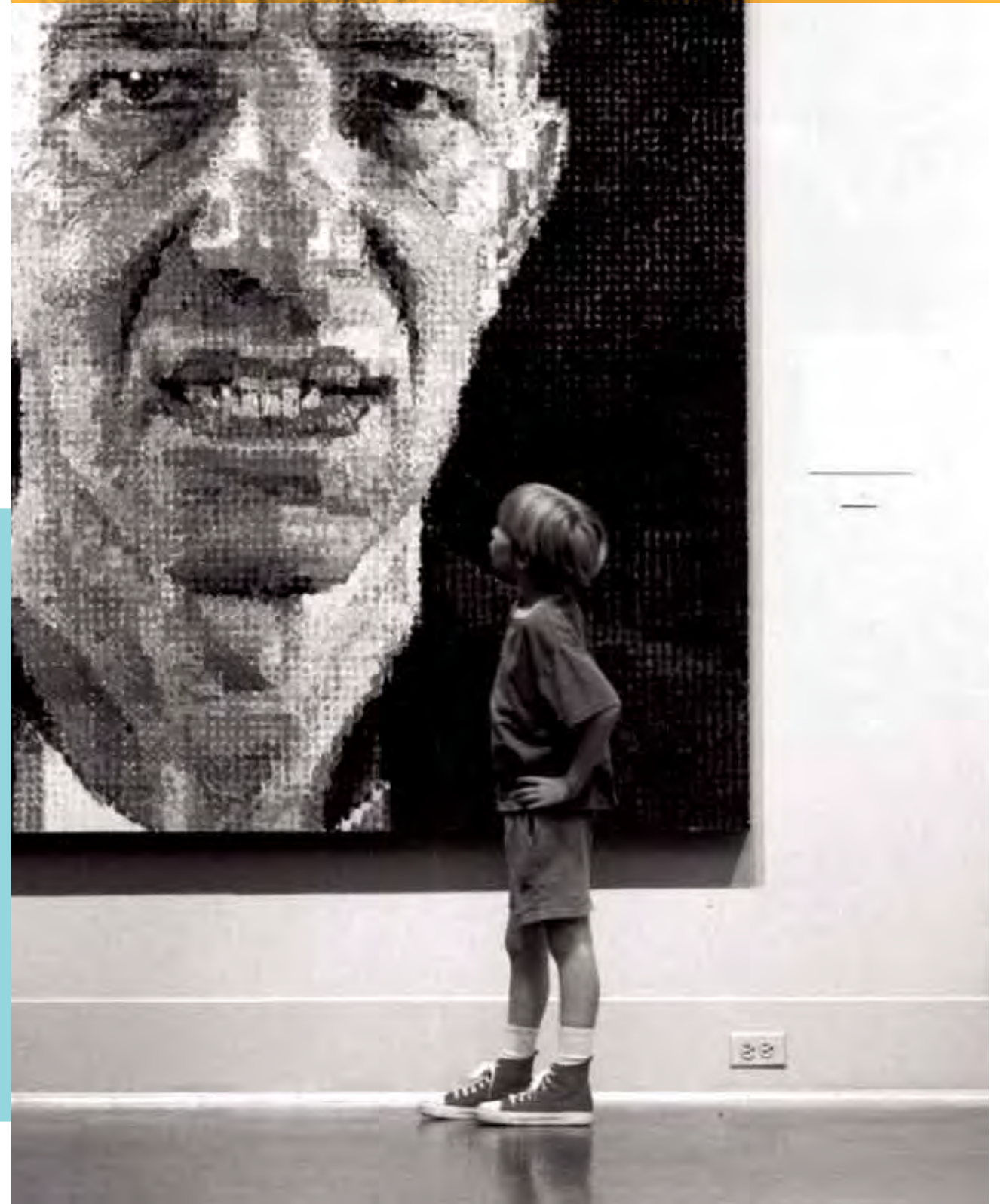
TMA won the title "America's Favorite Art Museum" after Museum supporters expressed their enthusiasm on the sponsoring blog's message boards and used social media to garner votes.





CLAUDIA HOLE

The Toledo Museum of Art is truly a gem.



HOLLY LEMAR

Growing up in Toledo I can agree that, as a child going to field trips, it is what inspired my love of art.

Bare Witness: Photographs by Gordon Parks

February 5–April 25, 2010

Whistler: Influences, Friends and the Not-So-Friendly

February 26–May 30, 2010

Mexico's Toledo

March 12–May 9, 2010

The Psychedelic 60s: Posters from the Rock Era

June 11–September 12, 2010

Out of Sight

June 18–August 29, 2010

Travelers through Ancient Lands

September 10, 2010–February 6, 2011

Life in Miniature: Ceramic Netsuke from the Silverman Collection

October 1, 2010–February 27, 2011

Inspired Giving: The Apollo Society 25th Anniversary Exhibition

October 15, 2010–February 13, 2011

The Egypt Experience: Secrets of the Tomb

October 28, 2010–June 3, 2012

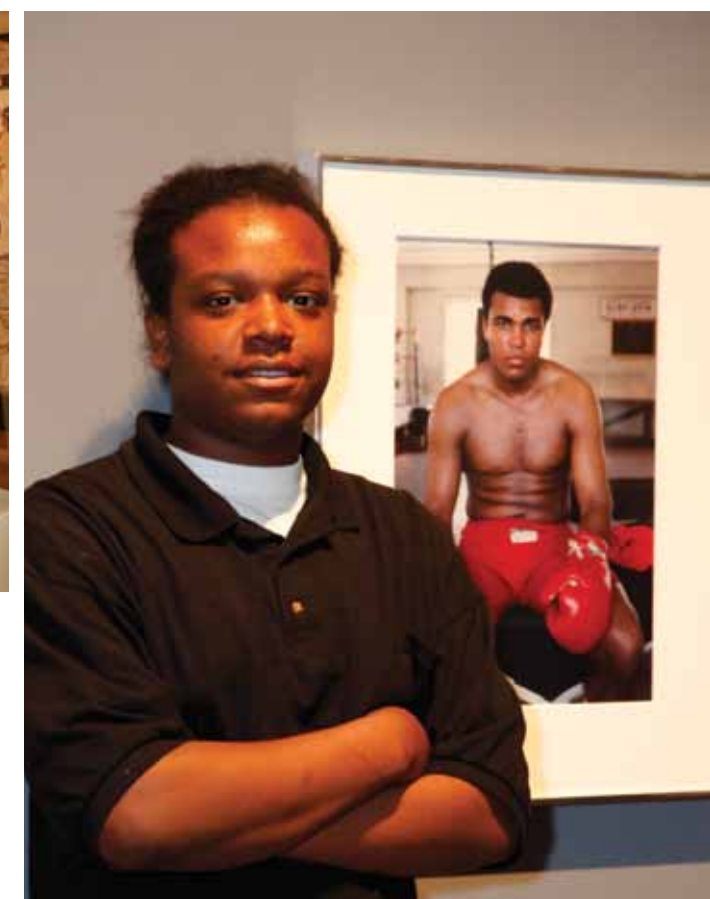
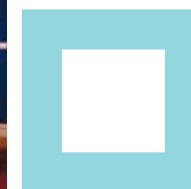
Aminah Robinson: Voices That Taught Me How to Sing

November 19, 2010–April 10, 2011

From the richness of the African American experience, to the fascination with all things Egypt, to the art of 1960s popular music, the Museum's 2010 exhibition schedule was a resounding success with the public.

The Psychedelic 60s: Posters from the Rock Era, curated by Amy Gilman, drew more than 104,000 visitors—the highest attended show since 2003's *Van Gogh: Fields* blockbuster. The colorful poster show, on loan from collector Houston Freeburg, was the perfect summertime confection.

It was balanced by exhibitions drawn from the TMA collection, including *Inspired Giving: The Apollo Society 25th Anniversary Exhibition* and *Life in Miniature: Ceramic Netsuke from the Silverman Collection*. Other popular shows featured works by photographer Gordon Parks and Columbus-based artist Aminah Robinson.



Fiscal Year 2009–2010 Exhibitions

Radiant Ensemble: Jewelry from the Nancy and Gilbert Levine Collection

December 4, 2008–August 9, 2009

Creative Spirit: A TMA High School Art Council Exhibition

May 22–July 19, 2009

Sylvania Senior Center Artist Group

June 5–July 19, 2009

Juneteenth: Photography in Focus

June 5–July 19, 2009

Prints of Pop II: The Art of Sir Eduardo Paolozzi

June 12–September 6, 2009

Monkey Business

July 2–August 30, 2009

91st Annual Toledo Area Artists Exhibition

July 10–August 23, 2009

Picturing America

July 24–August 16, 2009

TMA Staff Creates

August 14–September 20, 2009

Chihuly Toledo!

September 17, 2009–February 7, 2010

LitGraphic: The World of the Graphic Novel

October 2, 2009–January 3, 2010

***The Northwest Ohio Camera Club Council:
The World Up Close***

October 9–November 15, 2009

***Storybook Stars: Award Winning Illustrations
from the Mazza Collection***

October 9, 2009–January 31, 2010

Cottier Studios: Inspired by TMA

October 16–November 15, 2009

Word Play

October 16, 2009–February 7, 2010

Paris: City of Art

November 6, 2009–March 14, 2010

TMA Student Exhibition

December 4, 2009–January 10, 2010

Monday Morning Painters

January 22–March 7, 2010

***Self Portraits: The Young Ladies of the Lucas
County Juvenile Detention Center***

January 29–March 1, 2010

Bare Witness: Photographs by Gordon Parks

February 5–April 25, 2010

***Whistler: Influences, Friends and the
Not-So-Friendly***

February 26–May 30, 2010

Mexico's Toledo

March 12–May 9, 2010

TMA High School Art Council

March 12–April 25, 2010

Quest for Fire Studios

March 26–May 2, 2010

***Strong Sensations: Impressionist & Symbolist
Works on Paper 1880–1900***

April 23–August 1, 2010

***Psychedelic Printmaking: The University of
Toledo Printmaking Students***

April 30–June 13, 2010

Findlay Area Artists

May 21–June 20, 2010

The Psychedelic 60s: Posters from the Rock Era

June 11–September 12, 2010

Exhibitions Continued through the Calendar Year 2010

92nd Annual Toledo Area Artists Exhibition

June 11–September 12, 2010

Out of Sight

June 18–August 29, 2010

AIM Exhibition

July 2–August 8, 2010

Arts Gone Wild

July 16–August 15, 2010

Cancer Connection

August 20–September 28, 2010

Exhibition at the Kalamazoo Institute of Arts

Strong Women, Beautiful Men

August 28–October 31, 2010

Athena Art Society

September 3–October 3, 2010

Travelers through Ancient Lands

September 10, 2010–February 6, 2011

Life in Miniature: Ceramic Netsuke from the Silverman Collection

October 1, 2010–February 27, 2011

Exhibitions Continued through the Calendar Year 2010

Perrysburg Heights Photography Exhibition

October 1–31, 2010

Inspired Giving: The Apollo Society 25th Anniversary Exhibition

October 15, 2010–February 13, 2011

Hispanic/Latino Invitational Art Exhibition

October 22–November 28, 2010

Hispanic/Latino Mural Project

October 22–November 28, 2010

The Egypt Experience: Secrets of the Tomb

October 28, 2010–June 3, 2012

Venice: Light and Landscape

November 4, 2010–March 11, 2011

The Bead Goes On Photo Journey

November 5–28, 2010

Aminah Robinson: Voices That Taught Me How to Sing

November 19, 2010–April 10, 2011

TMA School Show

December 3, 2010–January 4, 2011

Acquisition Highlights

The Toledo Museum of Art has a long history of acquiring singular great works by great artists. This philosophy of collecting, along with the vast breadth of our encyclopedic collection, invites the addition of striking works from many eras, cultures, and mediums.

While the Museum was under interim leadership for most of 2010, the number of acquisitions was not particularly large. However, it should be noted that many longtime friends and supporters of TMA joined our founders, the Libbeys, in making significant gifts of art during the period, extending the legacy of community generosity toward the Museum.

01: Fred Wilson (American, born 1954), *Iago's Mirror*, 2009, black plate glass, mirrored, molded, tooled, cut, and assembled, made in Murano, Italy. Partial gift of The Pace Gallery in honor of Georgia E. Welles and partial purchase with funds from the Libbey Endowment, Gift of Edward Drummond Libbey, 2010.9

02: Josepha Gasch-Muche (German, born 1944), *Pyramid*, 2008, broken liquid crystal display (LCD) substrate glass, adhesive, metal, and wood. Purchased with funds from the Libbey Endowment, Gift of Edward Drummond Libbey, 2010.46

03: Achille Etne Michallon (French, 1796–1822), *Landscape Near Cava*, about 1820, oil on paper. Gift of The Apollo Society, 2010.30

04: Peter Shire (American, born 1947), *Peach Pot*, 1996, whiteware. Gift of Devra Breslow, 2009.363

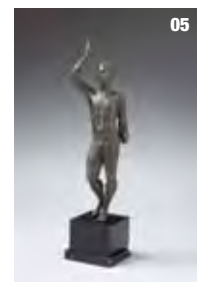
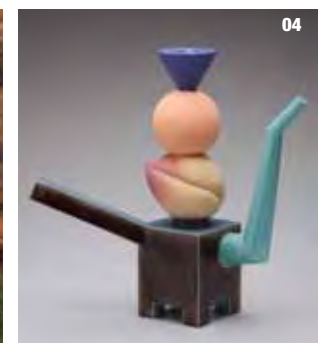
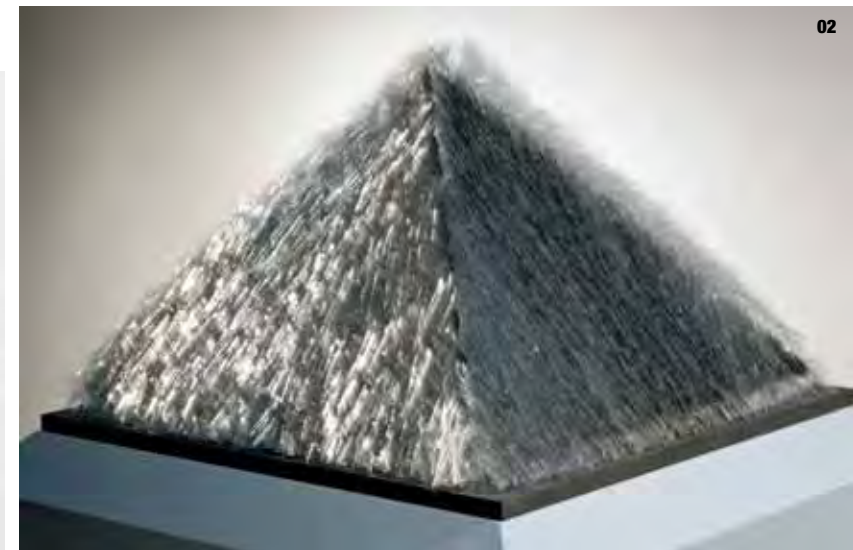
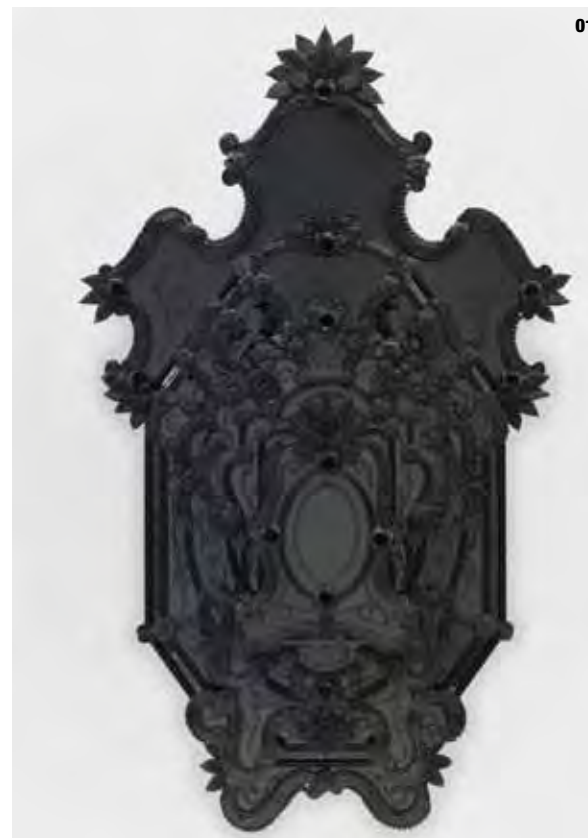
05: Greek, Late Hellenistic Period, *Figure of an African*, late 2nd–mid 1st century B.C., bronze. Purchased with funds given by Barbara Baker, Nancy and Gene G. Phlegar, the Popplestone Family, and with funds from the Libbey Endowment, Gift of Edward Drummond Libbey, 2010.5

06: Matsumoto Hoji (Japanese, unknown–1800), *Bullfrog*, about 1785, hanging scroll, ink on paper. Purchased in honor of Rita Kern with funds given by Robert Bell, Rhoda L. and Roger M. Berkowitz, Mrs. Alvin Bippus, Eastman & Smith Ltd./David and Cynthia Krock, Mary Lou Fox, Mrs. Margaret J. Hiett, Posy Huebner, Susan and Thomas Palmer, Dorothy MacKenzie Price, Carolyn and Richard Putney, Mr. and Mrs. Stefan Sanderling, Mrs. Georgia Welles, Mr. Carl White and Mrs. Kathleen Carroll White, Patricia Whitesides, Mrs. Marilyn Willey, and Roger E. Wyman, 2010.15

07: Chinese, Qianlong Period (1736–1795), *Reverse-Painted Mirror Portraits of Elizabeth and Christian Graham*, about 1785, mirror glass with reverse painting. Purchased with funds from the Libbey Endowment, Gift of Edward Drummond Libbey, 2010.50–.51

08: *226 Japanese ceramic netsuke*. Gift of Richard R. Silverman, 2009.66–.291

09: African, Ghana, Aka People, Asante Group, One of *Three Queen's Bracelets*, mid-19th century, gold, lost-wax casting with wire, repoussé, chasing, and soldering. Partial gift of Rahwae and Msimbi Shuman and partial purchase with funds from the Libbey Endowment, Gift of Edward Drummond Libbey, 2009.327–.329



Acquisitions for Fiscal Year 2009–2010

African Art

01: African, Ghana, Aka People, Asante Group, *Three Queen's Bracelets*, mid-19th century, gold, lost-wax casting with wire, repoussé, chasing, and soldering. Partial gift of Rahwae and Msimbi Shuman and partial purchase with funds from the Libbey Endowment, Gift of Edward Drummond Libbey, 2009.327-.329

Ancient Art

13 Greek antiquities, including ceramic, stone, and metalwork, Gift of Richard C. and Betty G. Veler, 2009.397-.409

02: Greek, Late Hellenistic Period, *Figure of an African*, late 2nd – mid 1st century B.C., bronze. Purchased with funds given by Barbara J. Baker, Nancy and Gene Phlegar, the Popplestone Family, and with funds from the Libbey Endowment, Gift of Edward Drummond Libbey, 2010.5

Roman, *Lamp*, 5th – 6th century A.D., ceramic. Gift of Ruth Cordes Cantwell in memory of her father, George Cordes, 2009.292

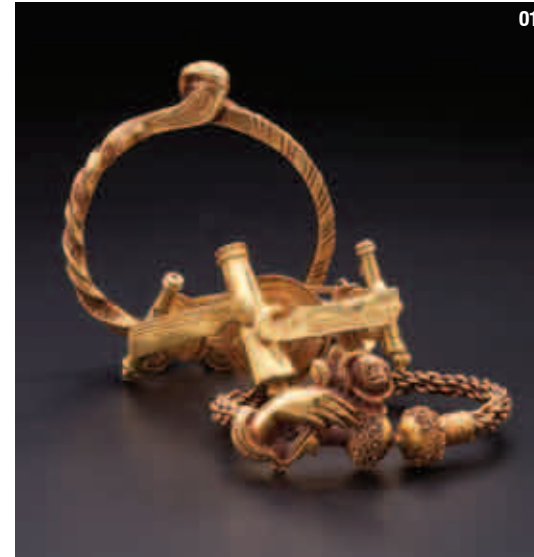
Asian Art

03: 226 Japanese ceramic netsuke. Gift of Richard R. Silverman, 2009.66-.291

70 Japanese woodblock prints, woodblocks, drawing, and printed book, including works by the Kikuchi Keigetsu, Ogata Gekko, Wakayoshi, Nakayama Sugakudo, Chikuseki, Hara Zaisen, Yoshikawa-Kenjiro Kanpo (Kampo), Utagawa Hiroshige, Utagawa Kunisada, Nomura Yoshimitsu, and unknown artists. Gift in honor of Dr. and Mrs. B.E. Douglass, 2009.420-.441, 2009.443-.490

Gigado Ashiyuki (Japanese, active 1813-1833), *Arashi Rikan II in an Osaka Kabuki Scene*, about 1827, color woodblock print. Purchased with funds from the Libbey Endowment, Gift of Edward Drummond Libbey, 2010.2

04: Matsumoto Hoji (Japanese, unknown – 1800), *Bullfrog*, about 1785, hanging scroll, ink on paper. Purchased in honor of Rita Kern with funds given by Robert Bell, Rhoda L. and Roger M. Berkowitz, Mrs. Alvin Bippus, Eastman & Smith Ltd./David and Cynthia Krock, Mary Lou Fox, Mrs. Margaret J. Hiett, Posy Huebner, Susan and Thomas Palmer, Dorothy MacKenzie Price, Carolyn and Richard Putney, Mr. and Mrs. Stefan Sanderling, Mrs. Georgia Welles, Mr. Carl White and Mrs. Kathleen Carroll White, Patricia Whitesides, Mrs. Marilyn Willey, and Roger E. Wyman, 2010.15



01



02

03



2009.66



04

Acquisitions for Fiscal Year 2009–2010

Asian Art

05: Indian, Delhi Sultanate, *Sultanate Mihrab* (Prayer Niche), 1320 A.D. (720 AH), white marble. Purchased with funds given by Drs. Sam and Fadia Abaza, Drs. S. Mansoor Abidi and Farhana Habib, James S. Adray, Mr. and Mrs. Naveed Ahmed, Dr. and Mrs. M.Y. Ahmed, Dr. and Mrs. Nasir Ali, Dr. Abed and Mrs. Ghada Alo, Dr. and Mrs. Steven M. Ariss, Dr. and Mrs. Fayyaz H. Hashmi, Dr. and Mrs. Raza Hashmi, Dr. S. Amjad Hussain, Dr. Saleh A. Jabarin, Cherrefe A. Kadri, Dr. Abida Khan, Michael S. Orra, Dr. NurJehan Quraisy, Drs. M. Razi and Shadida Rafeeq, Drs. Syed and Tabinda Rehman, Hussien and Randa Shousher, Dr. and Mrs. Karim Zafar, and with funds from the Libbey Endowment, Gift of Edward Drummond Libbey, 2010.6

06: Indian, Mughal School, *Painting of a Portuguese Gentleman*, about 1600–1605, opaque pigments and gold on paper, mounted on an album page. Purchased with funds given by Jonathan F. Orser and with funds from the Libbey Endowment, Gift of Edward Drummond Libbey, 2010.7

Indian, Rajasthan, Mewar, *Rasikapriya from the Samdehi Ragini*, 1740, opaque watercolor heightened with gold on paper. Purchased with funds from the Libbey Endowment, Gift of Edward Drummond Libbey, 2010.12

Indian, Rajasthan, Udaipur, *Maharana Jagat Singh II in Procession*, about 1740, opaque watercolor and gold on paper. Purchased with funds from the Libbey Endowment, Gift of Edward Drummond Libbey, 2010.14

Japanese, *Ojime*, 19th century, agate. Gift of Norman L. Sandfield, 2009.344

Japanese, *Charger*, porcelain. Gift of Elma Ludlow, 2009.364

Japanese, mid-19th century, *Kagmibuta Netsuke*, blue Edo glass with gold central element. Gift of Richard R. Silverman, 2009.391

07: Yamaguchi Soken (Japanese, 1759–1818), *A Monkey Examining a Monkey Netsuke and Inro*, hanging scroll. Gift of Norman L. Sandfield, 2009.343

Tibetan, *Thanka*, ink and color on cloth. Gift of Marjorie S. Baril, 2009.411

Hiroshi Yoshida (Japanese, 1876–1950), *Gold Gate, Kimmon*, 1941, woodblock print. Purchased with funds from the Libbey Endowment, Gift of Edward Drummond Libbey, 2009.357

Hiroshi Yoshida (Japanese, 1876–1950), *Chion-in Temple Gate*, 1935, color woodblock print. Purchased with funds from the Libbey Endowment, Gift of Edward Drummond Libbey, 2010.3

Hiroshi Yoshida (Japanese, 1876–1950), *Spring in a Hot Spring*, 1940, color woodblock print. Purchased with funds from the Libbey Endowment, Gift of Edward Drummond Libbey, 2010.4

Hiroshi Yoshida (Japanese, 1876–1950), *Omuro*, 1940, color woodblock print. Purchased with funds from the Libbey Endowment, Gift of Edward Drummond Libbey, 2010.10

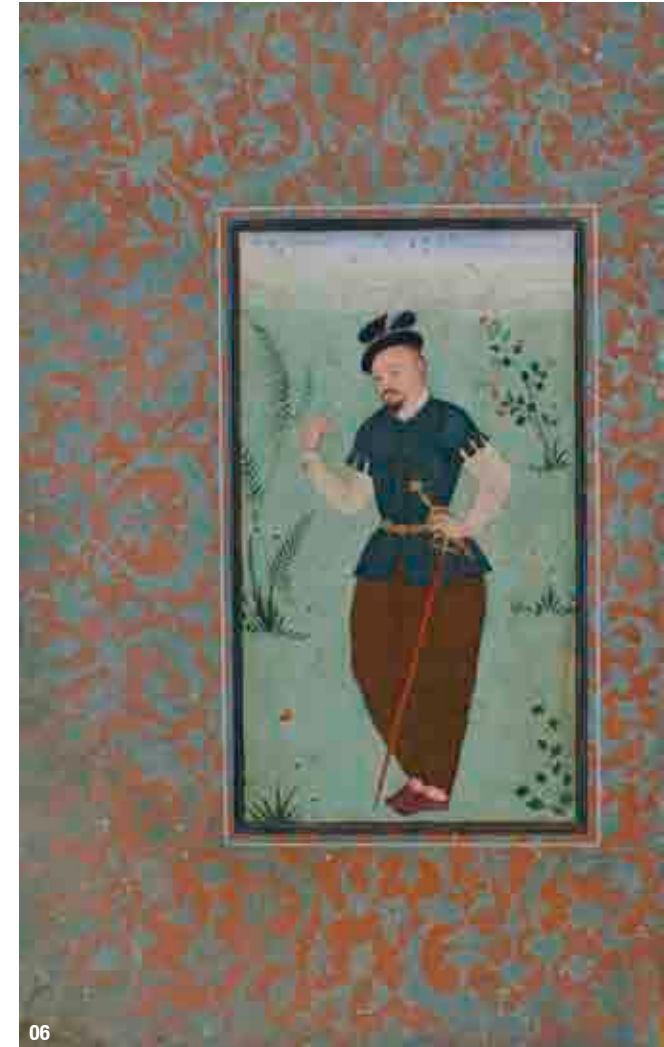
08: Hiroshi Yoshida (Japanese, 1876–1950), *The Cherry Tree in Kawagoe*, 1935, color woodblock print. Purchased with funds from the Libbey Endowment, Gift of Edward Drummond Libbey, 2010.11

Hiroshi Yoshida (Japanese, 1876–1950), *A Shrine in the Deep Woods (Shinrin no miya)*, 1940, color woodblock print. Purchased with funds given by Claire and Allan Kirsner and with funds from the Libbey Endowment, Gift of Edward Drummond Libbey, 2010.26

Zoroku (Japanese, 1822–1877), *Seagull Netsuke*, ceramic. Gift of Richard R. Silverman, 2009.392



05



06



08



07

Acquisitions for Fiscal Year 2009–2010

Books and Manuscripts

Rein Jansma (Dutch), *Stairs*, 1982, pop-up book. Gift of Rhoda L. and Roger M. Berkowitz, 2009.359

Russell Maret (American, born 1971), *Æthelwold Etc.: Twenty-Six Letters Inspired by Other Letters and Non-Letters and Little Bits of Poetry. Rendered with Accompanying Notes by Russell Maret M.M.I.X*, 2009, letterpress. Mrs. George W. Stevens Fund, 2010.18

Sam Winston (English), *A Dictionary Story*, 2005, offset-lithography. Mrs. George W. Stevens Fund, 2010.19

Ceramics

09: Peter Shire (American, born 1947), *Peach Pot*, 1996, whiteware. Gift of Devra Breslow, 2009.363

Drawings

Radcliffe Bailey (American, born 1968), *Untitled*, fire drawing. Gift of the artist, 2009.410

10: Dale Chihuly (American, born 1941), *Untitled (Toledo)*, 2003, acrylic on paper. Gift of Rita Barbour Kern in memory of her husband, Dr. Edward A. Kern, 2009.296



10



09

Acquisitions for Fiscal Year 2009–2010

Glass

Henri Marie Joseph Bergé (designer; French, 1870–1937), Victor Amalric Walter (maker; French, 1870–1959), *Small Tray with a Chameleon (Vide-Poche “Caméléon”)*, about 1920, polychrome transparent and opaque glass, mold-made pâte-de-verre. Purchased with funds from the Libbey Endowment, Gift of Edward Drummond Libbey, 2010.20

Sonja Blomdahl (American, born 1952), *Celadon/Scarlet*, translucent celadon, transparent orange, and colorless non-lead glass, blown and joined (incalmo technique). Gift of Devra Breslow, 2009.361

11: Jan Černý (Czechoslovakian, 1907–1978), *Untitled*, mid-late 20th century, non-lead glass, cast, molded, acid-etched, and polished. Gift of Devra Breslow, 2009.362

Compagnie des Verreries et Cristalleries de Baccarat, France, *Pair of Sulphide Portrait Plaques: Marie Antoinette and Louis XVI*, about 1820–1830, colorless lead glass with mold-made sulphide inclusions, cut and polished with gilt-bronze hasps. Purchased with funds from the Libbey Endowment, Gift of Edward Drummond Libbey, 2010.16-.17

Laura Donefer (Canadian/American, born 1955), *Blizzard Amulet Basket*, 2007, colorless and opaque white glass, blown, tooled, applied, flame-worked, assembled, and found organic objects. Purchased with funds from the Libbey Endowment, Gift of Edward Drummond Libbey, 2010.8

12: English, *Dessert Stand (Jelly Tree)*, 18th century, consists of 30 pieces of colorless lead glass, blown, mold-blown, applied, and tooled. Purchased with funds given by George Schlosser in memory of Rebecca Hedler, 2009.297-.326

French, probably Normandy, *Pair of Champagne Glasses*, about 1850–1880, glass. Gift of Judith Friedman, 2009.394-.395

Dr. Robert C. Fritz (American, 1920–1986), *Sculptural Form*, about 1969–1970, glass, blown, applied, tooled, and mirrored. Purchased with funds from the Libbey Endowment, Gift of Edward Drummond Libbey, by exchange, 2009.294

T. G. Hawkes & Co. (factory; American, Corning, New York, 1880–1964), *Claret Jug in Aberdeen Pattern*, about 1900–1910, colorless lead glass, blown, applied, and cut. Gift of Frank O. Swanson, 2009.293

13: Italian, Venice, *Calcedonio Flask*, 17th century, calcedonio glass, mold-blown with aventurine flecks and silver-gilt closure. Purchased with funds from the Libbey Endowment, Gift of Edward Drummond Libbey, 2009.360A–B

Dominick Labino (American, 1910–1987), *Thomas Edison*, cast glass. Gift of the Carson Family in memory of Samuel G. Carson, 2009.412

Libbey Glass (factory; American, Toledo, Ohio), 25 pieces of glass, design models, and design drawings, 20th century. Gift of Libbey Inc., 2009.365-.389

Earl McCutchen (American, 1918–1985), *Bowl with Grid Pattern*, about 1960, glass, slumped and laminated with glaze and possibly metal filings. Gift of the estate of Mrs. Earl McCutchen, 2010.23

14: Earl McCutchen (American, 1918–1985), *Bowl with Starburst Pattern*, about 1960, glass, slumped and laminated with paper, glaze, and silver foil. Gift of the estate of Mrs. Earl McCutchen, 2010.24

Fred Wilson (American, born 1954), *Iago's Mirror*, 2009, black plate glass, mirrored, molded, tooled, cut, and assembled, made in Murano, Italy. Partial gift of The Pace Gallery in honor of Georgia E. Welles and partial purchase with funds from the Libbey Endowment, Gift of Edward Drummond Libbey, 2010.9



11



12



13



14



Acquisitions for Fiscal Year 2009–2010

Paintings

15: Giovanni Francesco Barbieri, called Guercino (Italian, 1591–1666), *Lot and His Daughters*, 1651–52, oil on canvas. Purchased with funds from the Libbey Endowment, Gift of Edward Drummond Libbey, 2009.345

Beverly Fishman (American, born 1955), *Night Kandyland*, 2009, acrylic, spray, and enamel paint. Gift of Gary L. Wasserman, 2009.390

Raymond Han (American, born 1931), *Granny Smith, Two Plums, Two Peanuts*, 1982, oil on canvas. Gift of Rita Barbour Kern in memory of her husband, Dr. Edward A. Kern, 2009.295

Manuel Hughes (American, born 1938), *Arkansas Memory Series*, 2008, oil on canvas (10 paintings). Gift of Cynthia and Ronald Thompson, 2009.393A–J

16: Achille Etna Michallon (French, 1796–1822), *Landscape Near Cava*, about 1819–20, oil on paper on canvas. Gift of The Apollo Society, 2010.30

17: Odilon Redon (French, 1840–1916), *Landscape*, 1870–75, oil on paper laid onto board. Purchased with funds given by Thomas N. and Gill W. Bentley, Ann W. Hartmann and Frank Snug, and Dr. and Mrs. James G. Ravin, and with funds from the Libbey Endowment, Gift of Edward Drummond Libbey, 2010.35

Photographs

Ansel Adams (American, 1902–1984), *Monolith, The Face of Half Dome, Yosemite National Park*, about 1927 (negative), gelatin-silver print. Gift of Margaret and Howard Bond, 2010.22

18: 13 photographs by George Platt Lynes and PaJaMa (Paul Cadmus, Jared French, and Margaret French), including portraits of George Tooker, Bob Bishop, and Tennessee Williams. Gifts of David Leddick, 2009.330–.342

19: Gordon Parks (American, 1912–2006), *American Gothic* (Ella Watson), 1942 (negative), gelatin-silver print. Purchased with funds given by the Toledo Friends of Photography and with funds from the Libbey Endowment, Gift of Edward Drummond Libbey, 2010.21



Acquisitions for Fiscal Year 2009–2010

Prints

Yaacov Agam (Israeli, born 1928), *Composition #194*, lithograph. Gift of Don Bacigalupi, former Director, in honor of the Museum Board of Directors, 2009.351

20: Benny Andrews (American, 1930–2006), *Operation, 1972*, etching. Gift of Barbara Sunderman Hoerner, 2009.353

21: Christo (American, born Bulgaria; 1935), *Wrapped Museum, 1968/9*, color lithograph. Gift of Mr. and Mrs. Spencer D. Stone, 2009.355

22: Jacob de Gheyn (Dutch, 1565–1629) after Hendrik Goltzius (Dutch, 1558–1617), *A Musketeer as Sentinel (a Soldier from the Bodyguard of Emperor Rudolph)*, before 1600, engraving. Gift of Jefferson D. Robinson in memory of his wife, Mary Elizabeth, by exchange, 2009.347

Paul Jacoulet (French, 1896–1960), *Portrait of Chamorro Woman-Red* from the series, *Seven Women of the South Seas*, 1934, color woodblock print. Gift in honor of Dr. and Mrs. B.E. Douglass, 2009.413

Paul Jacoulet (French, 1896–1960), *Portrait of Chamorro Woman-Orange* from the series, *Seven Women of the South Seas*, 1934, color woodblock print. Gift in honor of Dr. and Mrs. B.E. Douglass, 2009.414

Paul Jacoulet (French, 1896–1960), *Portrait of Chamorro Woman-Yellow* from the series, *Seven Women of the South Seas*, 1934, color woodblock print. Gift in honor of Dr. and Mrs. B.E. Douglass, 2009.415

Paul Jacoulet (French, 1896–1960), *Portrait of Chamorro Woman-Green* from the series, *Seven Women of the South Seas*, 1934, color woodblock print. Gift in honor of Dr. and Mrs. B.E. Douglass, 2009.416

Paul Jacoulet (French, 1896–1960), *Portrait of Chamorro Woman-Blue* from the series, *Seven Women of the South Seas*, 1934, color woodblock print. Gift in honor of Dr. and Mrs. B.E. Douglass, 2009.417

Paul Jacoulet (French, 1896–1960), *Portrait of Chamorro Woman-Indigo* from the series, *Seven Women of the South Seas*, 1934, color woodblock print. Gift in honor of Dr. and Mrs. B.E. Douglass, 2009.418

Paul Jacoulet (French, 1896–1960), *Portrait of Chamorro Woman-Violet* from the series, *Seven Women of the South Seas*, 1934, color woodblock print. Gift in honor of Dr. and Mrs. B.E. Douglass, 2009.419

Daniel Kelly (American, born 1947), *Bowl*, woodblock print with lithography and collage. Gift of Douglas Barr, 2010.28

23: Daniel Kelly (American, born 1947), *Read All About It*, 1999, woodblock print with lithography and Chine-collé. Purchased with funds from the Libbey Endowment, Gift of Edward Drummond Libbey, 2010.29

Ellsworth Kelly (American, born 1923), *Colored Paper Images*, 1976, colored pressed paper pulp. Gift of Mr. and Mrs. Spencer D. Stone, 2009.356

Isabella Kirkland (American, born 1954), *Taxa*, 2007–8, digital inkjet prints. Purchased with funds from the Libbey Endowment, Gift of Edward Drummond Libbey, 2010.25A–F

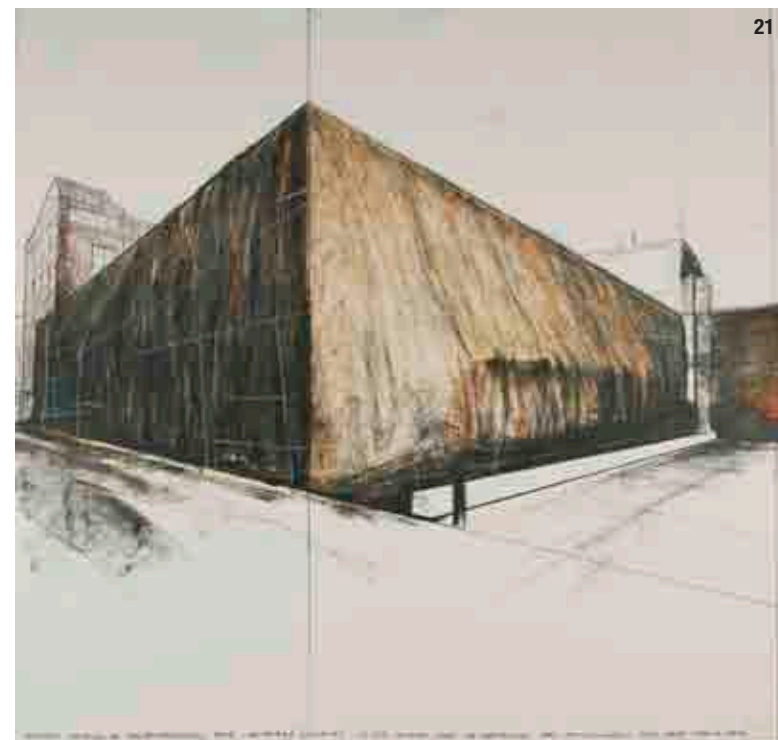
Robert Kushner (American, born 1949), *Chanson Egyptien*, 1982, hand-colored lithograph. Gift of Don Bacigalupi, former Director, in honor of the Museum Board of Directors, 2009.349



22



20



21



23



Acquisitions for Fiscal Year 2009–2010

Prints

Tomás Lasansky (American, born 1957), *Lincoln 1861–1865, W.S. #70*, intaglio print. Gift of Richard and Joycelyn Degener, 2009.358

24: Robert Laurie (British, 1755–1836) after George Stubbs (British, 1724–1806), *A Tigress*, 1800, mezzotint. Purchased with funds from the Libbey Endowment, Gift of Edward Drummond Libbey, 2010.1

Christian von Mechel (Swiss, 1737–1817), *Tombeau de Madame Langhans*, 1786, etching. Purchased with funds from the Libbey Endowment, Gift of Edward Drummond Libbey, 2009.352

Jean-Baptiste Monnoyer (French, 1635–1699), *Corbeille de fleurs: tubéreuse, oeillets, grenades, jasmin, grenadille ou fleurs de la Passion. (Basket of Flowers: Tuberose, Eyelets, Grenades, Jasmine, Grenadillo or Passion Flowers)* from the series *Les grandes corbeilles en hauteur*, 1660–1680, etching. Gift of Jefferson D. Robinson in memory of his wife, Mary Elizabeth, by exchange, 2009.346

Leonard New (Australian), *Girl on Swing*, 1940?, woodblock print with impressions of 24 composite printing and embossing woodblock prints. Gift in honor of Dr. and Mrs. B.E. Douglass, 2009.442A–Y

Duke Riley (American, born 1972), *Morituri Te Salutant (Those Who Are About To Die Salute You)*, 2009, laser cut engraving and drypoint on phragmites handmade paper. Gift of Douglas Barr, 2009.396

Lucas Samaras (Greek, born 1936), *Ribbon*, 1972, screenprint. Gift of Don Bacigalupi, former Director, in honor of the Museum staff, 2009.348

25: Vincent Dacosta Smith (American, 1929–2008), *A Moment Supreme*, 1972, etching. Gift of Barbara Sunderman Hoerner, 2009.354

Jack Youngerman (American, born 1926), *Untitled*, 1966, lithograph. Gift of Don Bacigalupi, former Director, in honor of the Museum staff, 2009.350

Sculpture

26: Gaston Lachaise (American, born France; 1882–1935), *Portrait of Augusta Hartmann*, 1923, bronze. Gift of Caroline MacNichol Orser, 2010.27

27: Marisol [Escobar] (American, born France; born 1930), *Fishing*, 1970, cast iridescent plastic. Purchased with funds from the Libbey Endowment, Gift of Edward Drummond Libbey, 2010.13



2009–2010 Fiscal Year Financial Summary

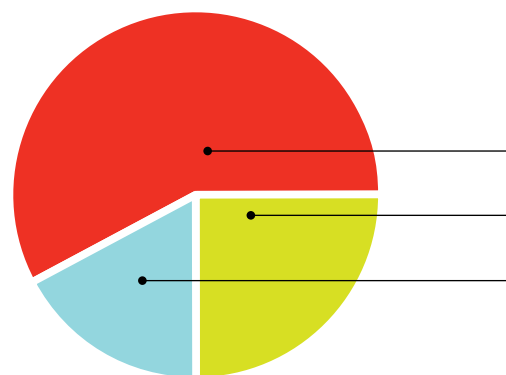
Ending June 30, 2010

Statement of Financial Position

SHORT TERM ASSETS	\$3,106,010
LONG TERM ASSETS	\$236,003,960
Total Assets	\$239,109,970
LIABILITIES	\$20,810,600
NET ASSETS	\$218,299,370
Total Liabilities and Net Assets	\$239,109,970

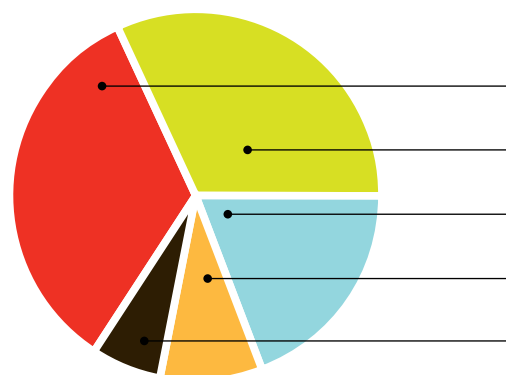
Summary of Key Financial Data

POOLED INVESTMENTS	\$127,387,048
CHARITABLE TRUSTS	\$50,927,051
Total	\$178,314,099
REVENUE	\$12,230,861
EXPENSES	\$12,221,980
Operating Surplus	\$8,881



Statement of Activities

58%	INVESTMENTS	\$7,100,649
25%	EARNED INCOME	\$3,005,927
17%	CONTRIBUTIONS	\$2,124,285
	Total Revenue & Support	\$12,230,861



Expense Conversion

34%	PROGRAMS AND EXHIBITIONS	\$4,115,904
32%	MUSEUM SUPPORT SERVICES	\$3,934,902
19%	CAMPUS OPERATIONS & MAINTENANCE	\$2,290,319
9%	RETAIL SERVICES	\$1,112,233
6%	MARKETING AND FUNDRAISING	\$768,622
	Total Expenses	\$12,221,980

Grants & Special Projects

COLLECTIONS AND PROJECTS

\$2,000,000

Mr. and Mrs. Frederic D. Wolfe

\$100,000+

American Recovery & Reinvestment Act
Richard Silverman
The Apollo Society—Funds to purchase Art
Ohio Department of Development

\$50,000 – \$99,999

National Endowment for the Arts

\$25,000 – \$49,999

Mr. and Mrs. Spencer D. Stone
Mr. and Mrs. Frederic D. Wolfe—Gift of Art

\$10,000 – \$24,999

Mrs. Devra Breslow
Carpenter Foundation
Anne and Carl Hirsch
Sturdivant Trust
Gary L. Wasserman—Gift of Art

\$7,500 – \$9,999

Heckert Fund

\$5,000 – \$7,499

Cynthia and Ronald Thompson
Urban Forestry Commission
Anonymous

\$2,500 – \$4,999

Dr. and Mrs. Thomas Brady
Diamond Tours, Inc.
Richard Silverman
Barbara Sunderman Hoerner—Gift of Art
Anonymous—Funds to purchase Art

EXHIBITIONS AND PROGRAMS

\$50,000 – \$99,999

Ohio Arts Council

\$25,000 – \$49,999

The Andersons, Inc.
Fifth Third Bank
Landman Goldman Foundation
Clement O. Miniger Memorial Foundation
Owens-Illinois, Inc.
Dorothy MacKenzie Price

\$10,000 – \$24,999

The Anderton Bentley Fund
Brooks Insurance
Huntington Bank
Key Bank
The David and Lura Lovell Foundation
ProMedica Health System
Shumaker, Loop & Kendrick, LLP

\$5,000 – \$7,499

Marshall & Melhorn**

\$1,000 – \$4,999

Sunoco

* Deceased

** Gifts-in-Kind

President's Council

The Museum recognizes and thanks the following individuals who made contributions of \$1,000 or more during fiscal year 2010. President's Council gifts provide vital support for the Museum's education and outreach efforts, special exhibitions, and the continuing care, presentation, and interpretation of the collection.

\$100,000

Anonymous

\$25,000 – \$49,999

Isabel H. Perry

\$10,000 – \$24,999

Mr. and Mrs. Richard P. Anderson
Dr. and Mrs. Thomas E. Brady, Jr.
Mr. Bruce Carver
Mr. George L. Chapman
and Ms. Leslie Ansberg
Sara Jane and William DeHoff
Ann W. Hartmann and Frank Snug
Posy Huebner
George and Katherine Jones
Mrs. Kathleen Magliochetti
Cynthia and Ronald Thompson
Mr. and Mrs. David K. Welles, Jr.
Mr.* and Mrs. David K. Welles, Sr.

\$5,000 – \$9,999

Barbara J. Baker
Mr. and Mrs. William W. Boeschstein
Mr. and Mrs. Charles E. Dana
Mr. and Mrs. Thomas B. Donnell
James and Kristine Hoffman
Mr. and Mrs. Dennis G. Johnson
Marjorie Z. Kaplin
Mr. and Mrs. Harley J. Kripke
Mrs. Helen McMaster
Mr. and Mrs. John F. Meier
Herb and Carolyn Metzger
Mrs. Donna Peters
Mrs. Mary Ellen Pisanelli
Mr. and Mrs. Arthur L. Purinton II
Mr. Sam L. Rice III
Mr. and Mrs. Charles Sullivan
Mike Thaman and Lisa Gathard
Scott and Margy Trumbull
Christine B. Turnbull
Mr. and Mrs. Frederic D. Wolfe
Mr. and Mrs. Thomas L. Young
Anonymous

\$2,500 – \$4,999

Mrs. Mary Pat Anderson
The Honorable Vernelis Armstrong
Ms. Joan Bayer
Mrs. Anderton L. Bentley, Jr.
Thomas N. and Gill W. Bentley
Nancy Burton and G. Mark Burton
Mr. and Mrs. John K. Clement
Mr. and Mrs. Steven R. Coffin
Mr. and Mrs. Harold Douthit
Mr. and Mrs. James B. Foote
Jacqueline J. Foster
Mr. Darrell H. Fox
Mrs. George W. Haigh
Mr. and Mrs. Paul F. Heymann
Mr. and Mrs. Richard G. LaValley, Sr.
Mr. John F. Libbe
Ms. Paula Mayes
Dr. and Mrs. Douglas C. Neckers
Mr. Norman C. Nitschke
Mr. and Mrs. Phillip O'Donnell**
Mr. Peter R. Orser
Susan and Thomas Palmer
Dorothy MacKenzie Price
Mr. Roger L. Radeloff
Richard and Gloria Reynolds
The Searles Family Foundation
Jennifer and Ellsworth H. Shriver
Mr. Carter Smith
Mr. and Mrs. Duane Stranahan, Jr.
John and Yolanda Szuch
Mr. and Mrs. Jeffrey Twyman
Anonymous

\$1,000 – \$2,499

Adrian Acebedo and Barbara Chappell
Sharon and Darryl Allen
Mr. and Mrs. William R. Ammann
Mr. and Mrs. Daniel T. Anderson
Mr. and Mrs. Michael J. Anderson
Mr. and Mrs. Robert M. Anspach
Mr. and Mrs. James M. Appold
Mrs. Jean Areddy
Mr. and Mrs. John Bachey

President's Council *(continued)*

Don Bacigalupi and Dan Feder
Mr. and Mrs. Thomas A. Baither
Dr. Anne Baker and Dr. Robert Lacy
Mr. and Mrs. Kenneth C. Baker
Mrs. William B. Ball, Jr.
Mrs. Marj Baril
Dr. and Mrs. Frank Barone
Mr. Michael R. Barthold
Ms. Joan M. Beck
Mr. Robert Bell
Ms. Cecile Renuart Bennett
Mr. and Mrs. Milton W. Bennett
Rhoda L. and Roger M. Berkowitz
Mr. and Mrs. Paul C. Betz
Mr. and Mrs. Rod A. Bigelow
Ms. Carol Bintz
Mrs. Alvin Bippus
Mr. and Mrs. R. Jeffrey Bixler
Mr. and Mrs. James W. Blumer
Mr. and Mrs. Willis S. Boice
Mr. William R. Bollin
Mr. and Mrs. George H. Booth, Jr.
Mr. Fred W. Bostleman
Konni Bostleman
Mr. and Mrs. Calvin K. Brauer
Mr. and Mrs. James H. Brennan, Jr.
Dr. Helen L. Brooks
Mr. and Mrs. Douglas S. Brown
Mrs. Joyce Brown
Mary Anne Brown
Paula and Peter Brown
Ms. Paula Brown-Gray
and Mr. David Gray
Mrs. Eleanor Brunner
Mr. and Mrs. Leonard C. Bullard, Jr.
Mr. and Mrs. Keith Burwell
Mr. Dennis J. Burzynski
Drs. Thurid and Earl Campbell
Ms. Elaine Canning
and Mr. Daniel Kory
Mr. and Mrs. William Carroll
Mr. and Mrs. Walter A. Churchill, Jr.
Mr. and Mrs.* Paul J. Churdar
Mr. and Mrs. William Ciralsky
Mr. and Mrs. Anthony R. Clark
Mr. Frederick D. Cohn
Dr. and Mrs. Anthony Comerota
Ms. Ramona Cormier
Brent and Pamela Cousino
Dr. and Mrs. John M. Croci

Mrs. Malcolm Crowther
Mr. and Mrs. Frank W. Cubbon, Jr.
Dr. and Mrs. Paul V. Daverio
Bill and Pam Davis
Mr. and Mrs. Bruce A. DeBoer
Dr. Carlos A. de Carvalho
and Ms. Carol Greenberg
Dr. and Mrs. Richard H. Deerhake
Mr. and Mrs. Anthony Deiger
Mr. and Mrs. Gary Delman
Mr. and Mrs. Ralph Delman
Mr. Bruce M. Denman
Mr. and Mrs. Gregory B. Denny
Mr. and Mrs. Clyde A. Dilley
Mr. and Mrs. Andreas Dionyssiou
Mrs. Patricia P. Dodd
Dr. and Mrs. John J. Dooner, Jr.
Mrs. Linda Dunbar
Dr. and Mrs. Rod W. Durgin
Mr. Edwin F. Durivage
Dr. and Mrs. Gregor K. Emmert, Sr.
Mrs. Nancie H. Entenmann
Mr. and Mrs. Joel P. Epstein
Mr. and Mrs. Richard R. Faist
Paula H. and C. William Fall
Mr. and Mrs. John K. Fauver
Mary and John Fedderke
Mr. and Mrs. William D. Feniger
Sandra and James Findley
Mr. Bob Fleisher
Mrs. Mary D. Foster
Mr. and Mrs. William R. Foster
Mary Lou Fox
Mary E. Galvin
Mathais J. Gaynor
and Judy L. Stone-Gaynor
Ms. Carol Gee
Dr. and Mrs. Gerald B. Glassberg
Mr. and Mrs. Paul Goldner
Dr. Mary J. Gombash
and Mr. Bud Crosby
John and Julie Graham
Mr.* and Mrs. Willie E. Green
Mrs. Esther Greenfield
Mr. and Mrs. Douglas G. Haag
Mr. and Mrs. John R. Hadley
Mr. and Mrs. William K. Hamilton
Shirley Hancock
Mr. and Mrs. Michael S. Hanley
Mr. and Mrs. Gene Hardy

President's Council *(continued)*

Mr. and Mrs. Fred J. Harrington
Mr. and Mrs. Frank M. Harris
Mr. and Mrs. John F. Hayward
Mr. Henry W. Hauenstein
Ms. Pamela S. Hershberger
Mrs. Margaret J. Hiatt
Anne and Carl Hirsch
Ireatha Hollie
Mr. and Mrs. John H. Hull
Ms. Barbara Hunter
Marjorie M. Hutton
Ms. Jeannie Hylant
Ms. Sandra M. Hylant
Mr. George Isaac
Mr. and Mrs. Zac Isaac
Frank and Lynn Jacobs
Mr. Jamille G. Jamra
Ms. Billie Johnson
Mr. Charles R. Johnson
John and Deborah Joslin
Dr. and Mrs. Robert B. Julius
Mr. and Mrs. Thomas Kabat
Mr. and Mrs. Richard L. Kaplin
Mr. and Mrs. Donald V. Kellermeier
Mr. and Mrs. David S. Kelly
Mr. and Mrs. Richard Kimple
Dr. and Mrs. Allan B. Kirsner
Mr. and Mrs. Frank P. Kistler, Jr.
Mary Ann and Jim Kline
Mr. Jeff and Dr. Inge Klopping
Annette Knoblauch and Paul Bernard
Mr. and Mrs. John S. Kobacker
Ms. Georgeann Kohn
Dr. David Kouba
 and Dr. Rupali Chandar
Ms. Cassandra Kozlowski
Mr. and Mrs. Paul M. Kraus
Dr. and Mrs. Kenneth Krupp
Mr. and Mrs. Robert J. Lanigan
Julie and Kyle Latham
Mr. and Mrs. Walter W. Lathrop
Mr. and Mrs. Daviel J. Lautermilch
Dr. and Mrs. Christopher C. Layne
Mr. Donald Leary
 and Ms. Rebecca Fuhrman
Mr. and Mrs. Robert E. Levey
Mr. and Mrs. Gordan I. Levine
Mr. and Mrs. Joel A. Levine
Mr. and Mrs. Jon M. Levine**
Mr. and Mrs. Allan Libbe

Mr. and Mrs. Barry Liber
Mr. and Mrs. Leslie P. Lipski
Lura M. Lovell
Mrs. J. Carson Lumbattis
Mrs. Thomas W. Mahoney
Dr. and Mrs. Arthur Mancini
Ms. Rita Mansour
Paul and Kathryn Marion
Dr. and Mrs. Gerald Marsa
Mr. and Mrs. Robert E. Martin
Mr.* and Mrs. Charles A. McKenny
Mr. and Mrs. Philip McWeeny
Mrs. J. Dennis Menton
Mrs. Karen Merrels
Marlene G. and Richard H. Metzger
Mr. and Mrs. Donald Mewhort III
Martha and Donald M. Mewhort, Jr.
Ms. Marguerite Michaels
Ms. Jolene Miller
 and Ms. Donna Steppe
Kathryn and Jon Miller
Mr. and Mrs. Phillip Mintun
Suzanne S. Moesser
Dr. and Mrs. John F. Monoky, Jr.
Mr. and Mrs. Jack Moor
James C. Moore and Tim R. Valko
Mrs. David S. Morgan
Ms. Susan E. Morgan
Dr. and Mrs. Patrick J. Mulrow
Mrs. Harold C. Munger
Dr. and Mrs. Richard Munk
Dr. and Mrs. Daniel S. Murtagh
Nicholas F. and Susan Hartman Muska
Dr. and Mrs. John J. Newton
Dr. and Mrs. Jack R. Niggemyer
Drs. Latif and Soad Nimr
Mr. and Mrs. George V. Oravec
Mr. and Mrs. Paul A. Ormond
Mr. Jonathan F. Orser
Mr. and Mrs.* Peter R. Orser
Mr. and Mrs. Delos M. Palmer, Jr.
Mrs. Margaret M. Palmer
Mr. Steven Papadimos
 and Dr. Chris Kanios
Rev. and Mrs. C. Eugene Pearson
Nancy and Gene Phlegar
Mr. and Mrs. Thomas G. Pletz
The Honorable
 and Mrs. John W. Potter
Carolyn and Richard Putney

President's Council *(continued)*

Dr. and Mrs. Suresh Ramnath
Dr. and Mrs. James G. Ravin
Dr. and Mrs. Louis C. Ravin
Roger and Katerina Ray
Dr. Shirley Ferguson Rayport
Timothy and Barbara Reed
Mr. Robert F. Reichert
Mr. and Mrs. Sam L. Rice, Jr.
Ms. Nancy Robinson
Mr. Marvin A. and Dr. Nancy C. Robon
Mr. and Mrs. Newton C. Rocche
Ms. Janet C. Rogolsky
Dr. and Mrs. Joseph Roshe
Mr. and Mrs. Paul H. Rothschild
Mr. and Mrs. Stephen A. Rothschild
Mr. and Mrs. Rodney J. Rupp
Dr. Richard D. and Dr. Elizabeth Ruppert
Miss Patricia Russell
Miss Georgianna Saloff
Mr. Norman L. Sandfield
Ms. M. Ann Sanford
Mr. and Mrs. Robert C. Savage
Mr. and Mrs. Lewis W. Saxby, Jr.
Ms. Janice Schemenauer
Mrs. Barbara Schlatter
Dr. Beverly Schmoll
Mr. and Mrs. Frederick W. Schwier
Mrs. Beverly B. Seeman
Mr. Robert R. Seeman
 and Ms. Karin A. Jacobson
Mr. George B. Seifried
Mr. and Mrs. Harry Shaw IV
Mr. and Mrs. Craig Sheets
Mr. and Mrs. Edward Shultz
Mr. and Mrs. James P. Silk, Sr.
Mr. and Mrs. Harry R. Silletti, Jr.
Dr. Charles* and Kathleen Smith
Mr. and Mrs. Merrill Smith
Mrs. Susan Smotherman
 and Ms. Courtney Smotherman
Ms. Nancy L. Smythe
Mr. and Mrs. Clyde G. Snodgrass
Mr. and Mrs. James D. Snyder
Dr. and Mrs. Thomas C. Sodeman
Mr. and Mrs. Donald L. Solomon
Mrs. Mary O. Spangler
Dr. and Mrs. Lawrence Spetka
Mr. and Mrs. Stephen H. Staelin
Ms. Barbara S. Steele
Mr. and Mrs. Michael W. Stewart

Millard and Joelyn M. Stone
Mr. and Mrs. Spencer D. Stone**
Dr. and Mrs. Eric Summons
Mr. and Mrs. Jerry C. Sutter
Mr. and Mrs. Timothy Szczepanski
Dr. and Mrs. Benjamin C. Tancinco
Mrs. Barbara B. Thierwechter
Dr. and Mrs. Warren S. Tipton
Toledo Chapter of Links
Mr. Louis E. Tosi
Mr. and Mrs. Larry D. Ulrich
Ms. Phyllis J. Van Orden
Mrs. Theodore R. Vogt
Ms. Jeanie Voss
Mr. and Mrs. Tom Waggoner
Mr. Gary L. Wasserman
 and Mr. Charles A. Kashner
Mr. and Mrs. David F. Waterman
Mr. and Mrs. Lee A. Wessellman
Jim and Sue White
Mr. and Mrs. John P. Williamson
Mrs. John S. Wilson
Mr. and Mrs. Robert G. Wingerter
Mr. and Mrs. William G. Winterer
Mr. and Mrs. Robert C. Winzeler, Jr.
Dr. Richard J. and Sandra Wiseley
Mr. and Mrs. Thomas J. Wolfe
Ms. Sara Worley
 and Mr. Eric D. Britton
Mr. and Mrs. Frederick L. Yocum
Mr. and Mrs. Tom Scott Ziems
Mr. Robert L. Zollweg
Dr. and Mrs. Joel P. Zrull
Mark and Gretchen Zyndorf
Anonymous (3)

Business Council

In-kind and financial gifts from the business community to support Museum operations.

\$50,000 – \$99,999

Fifth Third Bank*
Health Care REIT

\$25,000 – \$49,999

The Andersons, Inc.*
Owens-Illinois, Inc.

\$10,000 – \$24,999

The Anderton Bentley Fund
Blue Water Communications**
Brooks Insurance Agency
Buckeye CableSystem
Dana Corporation Foundation
KeyBank
Libbey Inc.
Owens Corning
Promedica Health System

\$5,000 – \$9,999

Adams Street Publishing company**
Christie's**
Findley Davies, Inc.**
Huntington Bank
Lesniewicz Associates**
Saturn of Toledo**
Shumaker, Loop & Kendrick LLP

\$2,500 – \$4,999

Art Iron Foundation
Capstone Turbine Corporation
Ernst & Young LLP
Grand Lubell Photography**
The Manhattan Building Company
Marshall & Melhorn*
Mercy
Metzgers Printing & PrePress**
Owens Corning
PNC Bank
Safeguard Security Service Inc.
SFC Graphics**
Spartan Chemical Company, Inc.
Sunoco, Inc.
Therma-Tru Doors
Toledo Crowne Plaza**

\$1,000 – \$2,499

2Scale
American Frame Corporation**
Area Office on Aging
Asset Protection Corporation
Betco Corporation
Bostwick-Braun Company
Campbell, Inc.
Clifton Gunderson LLP
The Collaborative Inc.
Connelly, Jackson & Collier
Cooper & Walinski, LPA
David Swesey Florist
Dimech Services, Inc.
DMC Technology Group, Inc.**
Duket Architects/Planners
Dunbar Mechanical, Inc.
Eastman & Smith Ltd.
E.S. Wagner Company
First Merit Bank
Great Lakes Sound**
Heidelberg Distributing Company*
Hull & Associates, Inc.
Hylant Group Inc.
Isaac Families
Jones & Henry Engineers, Ltd.
Kuhlman Corporation
La-Z-Boy Foundation
Mad House/Bill Sattler
Marathon Petroleum Company LLC
Neville Landscape & Tree Service**
Ottawa Hills Travel**
Paramount Health Care/Promedica Health System
Paratus Group
Pepsi Beverages Company
Phoenix Services, Inc.
Plastic Technologies, Inc.
Premier Steel
Savage & Associates, Inc.
Spitler & Williams-Young Co. LPA
SSOE, Inc.
Taylor Automotive Group
Thomas Porter Architects
The Toledo Clinic, Inc.
Toledo Metal Spinning**
Toledo Mirror & Glass Company

Business Council *(continued)*

Toledo Mud Hens
Tomahawk Development
True North Energy
William Vaughan Company
Woodsage Holdings, LLC

* *Includes Gift-in-Kind*
** *All Gift-in-Kind*

Libbey Circle

Individuals who will create a lasting legacy by making planned gifts to the Museum.

Sharon and Darryl Allen
Mr. Steven M. Ambrose
Mr. J. Arch Anderson
Ms. Kay L. Baker
Mrs. Catherine J. Bates
Mrs. Lillian Becker
Mrs. Sally Bergsmark
Rhoda L. and Roger M. Berkowitz
Mrs. Alvin Bippus*
Dr. and Mrs. Lawrence A. Birndorf
Mr. and Mrs. William K. Block, Jr.
Mrs. William Block, Sr.
Clara M. Bloomer
Margaret and Howard Bond
Mr. and Mrs. Calvin K. Brauer
Dr. Helen L. Brooks
Mr. and Mrs. James L. Brown
Mrs. Eleanor Brunner
Ms. Rilma Oxley Buckman
Mr. and Mrs. James H. Chandler, Jr.
John T. and Molly P. Chiles
Mr. Paul J. Churdar
Mr. and Mrs.* John K. Clement
in Memory of Susanna L. Clement
Mr. and Mrs. Steven R. Coffin
Mr. Frederick D. Cohn
Mrs. Suzanne T. Cohn
Mr. and Mrs. Allan J. Conkle
Mrs. Suzanne C. Cook
Ms. Joe Ann Cousino
Ms. Erma E. Dee
Sara Jane and William DeHoff
Mrs. Cormac F. DeLaney
Mr. David Donley
and Ms. Karen E. Wood
Mr.* and Mrs. John R. Donnell

Mr. Byron S. Dunham
and Mr. Richard J. Hanna
Mr. Wilson G. Duprey
Mr. and Mrs. Nicholas M. Dye
Dr. and Mrs. Gregor K. Emmert, Sr.
Richard A.* and Nancie H. Entenmann
Mr. and Mrs. Richard R. Faist
Mr. and Mrs. James B. Foote
Mrs. Jacqueline J. Foster
Mr. and Mrs. Robert M. Fox, Jr.
Mr. and Mrs. Donald Fraser
Julie and James Funk
Margaret N. Gifford
Mr. and Mrs. Richard C. Glowacki
Mrs. Blanche Greenwald
Mr. and Mrs. Douglas G. Haag
Mrs. James C. Hackley
Mr. and Mrs. John B. Hadley
Mrs. George W. Haigh
Ann W. Hartmann and Frank Snug
Mr. and Mrs.* Henry W. Hauenstein
Lewis Rolfes Heldt*
Mr. and Mrs. Gregory A. Hendel*
Mr. and Mrs. Paul F. Heymann
Barbara Sunderman Hoerner
James and Kristine Hoffman
Mr.* and Mrs. Robert Hoogstoel
Posy Huebner
Mr.* and Mrs. William Hutton
Catharine and Severn* Joyce
Marjorie Z. Kaplin
Mr. and Mrs. Dean Kasperzak
Mr. John M. Kelchner, Jr.*
Mr. and Mrs. Jon K. Kerl
Mrs. Mildred E. Kern
Ms. Mary E. Kincaid

Libbey Circle *(continued)*

Mr. Bigelow Kinsey
Dr. and Mrs. Charles M. Klein
Mr. and Mrs. Harley J. Kripke
Mr. Gary B. Kuehnle
William and Mary Lasko
Mr. Kenneth J. Lay*
Dr. and Mrs. Dennis P. LeGolvan
Mr. and Mrs. Mervin N. Levey*
Mr. John F. Libbe
Mr. and Mrs. David R. Lindke
Mr. George P. MacNichol III*
Mr. and Mrs. Roger Mandle
Mr. and Mrs. John R. McLean
Mrs. Helen McMaster
Rev. John O. Meloy
Mrs. Karen Merrels
Mrs. Florence Metzger
Mr. Milford H. Meyers
Mrs. David S. Morgan
Mr. and Mrs. John Newton
Mr. and Mrs. William F. Niehous
Cheryl and Richard O'Connor
Mr. Peter R. Orser
Miss Patricia Osborn
Miss Elizabeth Papps
Ms. Isabel Perry
Ms. Mary Ellen Pisanelli
Mr. and Mrs. Alonzo H. Poll
Dorothy MacKenzie Price
Smiley Putman
Elizabeth Bentley Rank
Mr. Richard K. Ransom
Edith B. Rathbun
Dr. Louis C. Ravin*
Ms. Shelly Reber
Timothy and Barbara Reed
Mr. Robert F. Reichert
Ms. Carrol Lee Rice
Mr. and Mrs. William S. Richards

Mrs. David R. Rittenhouse
Ms. Janet C. Rogolsky
Mr. Walter D. Rosengarten
Paul and Rona Rothschild
Mr. James Rudolph
Mr. Norman L. Sandfield
Mr. Thomas A. Schmitt
Martha Wright Schomburg*
Mrs. Ann Searles
Mr. George B. Seifried
Joan L. Sepessy
Mr. and Mrs. John Shelly
Ms. Patricia Sill
Mr. Richard R. Silverman
Mr. and Mrs. David A. Snavely
Mr. Olan D. Snavely
Mr. John W. Snow
Mr. and Mrs. Donald L. Solomon
Mr. and Mrs. Donald L. Speck
Mr. Robert G. Speck*
Mr. and Mrs. Spencer D. Stone
Mr. and Mrs. Duane Stranahan, Jr.
Mr. and Mrs. Stephen D. Taylor
Mr. Jules L. Vinnedge
Dr. and Mrs. F. Michael Walsh
Mr. Prosser M. Watts, Jr.
Mr. and Mrs. Edward F. Weber
Mr. and Mrs. David K. Welles, Jr.
Mr.* and Mrs. David K. Welles, Sr.
Mr. and Mrs. Ralph B. Wenner
Mr. and Mrs. Byron L. West
Nancy L. and Philip Williams
Mr. and Mrs. John P. Williamson
Mr. and Mrs.* John T. Witte
Mr. and Mrs. Frederic D. Wolfe
Mr. Roger E. Wyman
Ms. Diane M. Zitzelberger
Anonymous (8)

Libbey Circle Realized

The Boone Foundation
Mr. George P. MacNichol III*
Rosemarie Shaffer
Anonymous (2)

The Apollo Society

President's Council members who donate an additional \$5,000 per year to purchase art.

Mr. and Mrs. Richard P. Anderson	Mrs. Edward Kern
Thomas N. and Gill W. Bentley	Mr. Jeff and Dr. Inge Klopping
Mrs. Alvin Bippus	Mrs. Kathleen Magliochetti
Mr. and Mrs. James W. Blumer	Herb and Carolyn Metzger
Mr. and Mrs. William W. Boeschstein	Suzanne S. Moesser
Mr. George L. Chapman and Ms. Leslie Ansberg	Susan and Thomas W. Palmer
Mr. and Mrs. Ed Danziger	Nancy and Gene Phlegar
Dr. and Mrs. Paul V. Daverio	Ms. Mary Ellen Pisanelli
Sara Jane and William DeHoff	Dr. and Mrs. James G. Ravin
Mr. and Mrs. Thomas B. Donnell	Mr. and Mrs. Robert C. Savage
Dr. and Mrs. Gregor K. Emmert, Sr.	Mr. and Mrs. Lewis W. Saxby, Jr.
Mr. and Mrs. James B. Foote	Mr. George B. Seifried
Mary Lou Fox	Mr. and Mrs. James P. Silk, Sr.
Ann W. Hartmann and Frank Snug	John and Yolanda Szuch
Anne and Carl Hirsch	Scott and Margy Trumbull
James and Kristine Hoffman	Mr. and Mrs. Jeffrey Twyman
Posy Huebner	Mrs. Theodore R. Vogt
Katherine and George M. Jones III	Mrs. Georgia Welles
Dr. and Mrs. Robert B. Julius	Mr. and Mrs. Frederic D. Wolfe
Mr. and Mrs. Thomas Kabat	Mr. and Mrs. Frederick L. Yocum
	Anonymous (2)

The Toledo Museum of Art makes every effort to correctly recognize its donors. If there is an error or omission in these listings, please contact the development office at 419-255-8000 x7432.

Active Docents

Michele Alexander
Lydia Allen
Jacquelyn Ayers
Jan Baker
Marj Baril
Mary Ann Boesel
Paula Brown-Gray
Bob Bucher
Jone Catchings
(Docent-in-Training)
Debbie Chapman
Claire Cole
Barbara Coon
Margaret Creutz
(Docent-in-Training)
Condessa Croninger
Dora Crowther
Elizabeth Cunningham
Pamela Davis
Gay Deiger
Andrea Delman
(Docent-in-Training)
Ann Desmond
Paulette Dewey
Annette Donar
Hope DuCharme
Lynn Duty
Jane Evans
Jacque Foster (deceased, July 2010)
Elizabeth Gabehart
Janice Gagnet
Mary Galvin
Nancy Gamble
Christine Goslin
Jim Graham
Candy Gray
Mary Gray
Karen Hakel (Docent-in-Training)
Rose Hampton
Ruth Hanson
Linda Harer
Deanna Harwell
Karen Hasenfratz
Bonnie Hay
Lisa Holman
Martha Houston
Mary Karazim
Carole Kauber
(Docent-in-Training)
Judith Ann Kehrlle
(Docent-in-Training)

Nancy Kelley
Carole Kiroff
Dianne Klein
Karen Klein
Shirley Kohler
Kate Krisjanis
Elaine Kunz
Joan Layne #
Patricia Lenortavage
Shere Lichtenwald
(Docent-in-Training)
Kathy Magliochetti
Julia Mahoney
Christine Mannes
Jeanne Rowley McArdle
Nancy McDowell
Kim Mendel
Suzanne Moesser
Linda O'Donnell
Ann O'Leary
Sema Onat
Susan Palmer
Pamela Parker
Ginny Peterson
Denise Robins
Nancy Robinson
Wilma Robinson
Deanna Johnson Ross
Carolyn Rozko
Gladys Rudolph #
Jeanne Rudski
Sandra Schocket
Carol Schoen
Elaine Scott
Carolyn Seeman
Judi Selden
Kelly Sheehan
Joyce Shultz
Kay Silk
Connie Stark
Ruth Stasiak #
(deceased, January 2011)
Jane Steger
Claudia Stein
Carol Strup
Ica Sutter
Brenda Sweeney
Yvonne Tertel
Pat Tipton
Nancy Verner
Shelley Walinski (Docent-in-Training)

Active Docents *(continued)*

Kateri Walsh
Joan Wiley
Val Wiley
Janet Williams
(Docent-in-Training)
Anita Witt
David Wolfe
Judy Yaklin
Diane Zitzelberger

Docents Emeritus

Jean Achenbach
Hendricus Albregt
Doris Averill
Leslie Balkany
Lore Barroso (deceased,
December 2010)
Anne Bartley
Jackie Bass
Sally Bergsmark (Active Emeritus)
Carolyn Bolovan
Tessie Boucouras
Debi Broeker
Paula Brown
Sharilyn Brune
Ellie Brunner
Nancy K. Burton (Active Emeritus)
Susan Carr
Molly Chiles
Suzanne Cook (deceased, January
2011)
Therese Coyle
Barbara Cummins
(Active Emeritus)
Anne Doerfler
Judy Dye
Ronnie Gebolys
Gerry Gertner
Peggy Grant
Barbara Gravengaard
Brenda Haag (Active Emeritus)
Mary Ann Hagy
Letty Haigh
Shirley Hancock
Leah Heimbeck #
(Active Emeritus)
Barbara Hendel
Posy Huebner
Anne Humphrey
(deceased, November 2010)

Annora Sue Karr
Betty Laukhuf
Leslie McCaffery-Risley
Do McEwen
Sharon McKisson
David McMurray
Pat McWilliam
Debbie Metcalf
Boots Metzger
Gloria Moulopoulos
Suzannne Neckers
Judy Newell
Jane Newell-Revenaugh
Donna Niehous
Joanne Niswander
Lorraine Nussel
Sue Pollock
Dorothy Price
Dorothy Rice # (Active Emeritus)
June Roshe (Active Emeritus)
Catherine Sautter
Grey Schmidt
Sue Schroeder
Millie Seibenick
Brooke Simonds
Lillian Spaulding
Thora Swirbul
Marcia Tavel
Barbara Thierwechter
Marlene Uhler (Active Emeritus)
Jean Voss
Jan Wilcox (Active Emeritus)
Terry Wolfe
Jacquey Yocum
Dorie Young

Honorary Docents

Roger Berkowitz
The late Emme Bippus (deceased,
February 2011)
Rose Glennon
The late Libby Labino
The late Otto Wittmann

First Docent

The late Kate Jamison
Music Docent

Volunteers *(continued)*

Marie Adkins
Katalin Albring
Nora Alfaham
Ashley Aniklewski
Lauren Applebaum
Sylvia Applebaum
Carol Ardner
Sunmi Yun Auh
Cassandra Badr
Alice Baker
Barbara Baker
Margaret Baranoski
Kelly Barfield
Kristin Barrett
Linda Barry
Anne Barshel
Gail W. Barth
Mary Lou Batanian
Karen Battles
Emily Beasecker
Mary Bell
Cecile Bennett
Krysta Bennett
Garry Blanchard
Thomas Blochowski
David Bobak
Amber Boggess
Seth Bordner
Jeanette Bradley
Alvera Brandt
Marcia Braun
Judith Breese
Emily Broeg
Barbara Bruce
Jerry Brucksieker
Tara Byczynski-Davis
Kathi Camp
Dawn Catau
Whitney Cephus
Carol Christiansen
Carmen Cioc
Deborah Clark
Janet Clark
Jessica Clark
Catherine Clements
Michael Clink
Annette Colchagoff
Alexandra Coleman
Lauren Comes
Leeze Conklin
Teresa Conlan

Bridget Copeland Harris
Emily Corwin
Barbara A. Creque
Susan Croci
Michael Croke
Michael Cunningham
Susan Cunningham
Kelly Curran
Barbara Cutillo
Marilyn Czerniejewski
Collette J. Daunhauer
William Daunhauer
Jon Davenport
Warren Davis
Nancy De La Garza
Erma Dee
Belle DeHan
Cyndee Detrick
Pamela Diaz
Dave Dibling
Sara Dibling
Patricia Dick
Virginia Dickey
Liliane Dockett
Richard Dockett
Krista Dolan
Christina Dominique
Annelle Donaldson
Johanna Doty
Nancy J. Drake
Norene Drewicz
Yolanda Durden
James Dusseau
June Effler
Nicole Eggerstoffer
Gracie Ehrbar
Nancy Elzinga
Jean M. Emery
Elizabeth Emmert
Carol Esplin
Jenna Fausey
Virginia (Ginny) Feltman
Faye (Glenda W.) Fenwick
Samantha Fillmore
Allison Fillous
Sally Finnegan
Diane Fisher
Maggie Fixler
Charles Francis
Cherie Francis
Lisa Franko

Volunteers *(continued)*

Anne C. Free
Jean Friis
Emily Frumker
Thelma Fuller
Ditte Galbraith
Ben Gibbs
Cynthia Gilman
Barbara Gladieux
Shashi Goel
Judith Gottlieb
Barbara J. Gould
Mary Gray
Thomas Greaney
Louise Gregory
Catherine Gruenwald
Suzanne Guinivere
Loretta Haag
Margaret Hagan
Laurel Hambright
Jane Hamilton
Marjorie Hanley
Julia Harbaugh
Kristal Harbert
Marilynn Hazard
Barbara Heindel
Rebecca Helman
Donna Herold
Marianne Hessel
Pamela Hoch
Kimberly Hofner
Hattie Kate Howell
Roger Howell
Johanna Hull
Jennifer Huntzinger
Elizabeth Hurst
Linda Irving
Julie James
Karla Johnson
Paulette Johnson
Paul Jomantas
William Kahlenberg
Lauren Kallin
Mary G. Kampe
Mary Karazim
Beverly Karp
Angela Kee
David Kelly
Helene Kilcourse
Janet Killam
Angela King
Valerie King

Benjamin Kohntopp
Katie Krawetzke
Susan Kruse
Dolores Kuehnl
Helen Kunz
Julia LaBay
Jean Lange
Crystal Lieb
Patricia Ligibel
Ted Ligibel
Oona Temple Lucienne
Jamie Luersman
Leah Lynch
Zoe Marks
Amanda Martinez
Susan Inez Mason
Darlene McCormick
Chantay Melton
Linda Meyer
Katie Michael
Joshua Miller
Susan Miller
Louis L. Mineff
Shamsi Modarai
Nicole Montgomery
Anne Morris
Phyllis Morton
Adrienne Moser
Ethel Moyer
Steven Mueller
Christine Mullan
Constance Murphy
Kelsey Nagel
Ellen Navarre
Kathy Nelsen
Gail Neuenfeld
Jamarr Neyland
Ryan Oaks
Sheila Odesky
Elyse Osborne
M. Evelyn Osburn
Sebastian Ostrowski
Matt Palmer
Linda Parker
Nichole Parmley
Lori Paton
Alisha Patton
Ashley Paulsen
Annetta Pawlak
Linda Pawlecki
Judy Pearson

Volunteers *(continued)*

Michael Peatee
Kathy Perzynski
Tom Perzynski
Fredric Pinkus
Susan Pollex
Mariah Postlewait
Juliana Prine
Martha Quinn
Deanna Radeloff
Pat Raitz
Nancy Ravin
Janet Reifert
Judith Reitzel
Rachel Reuss
Kirsten Riethmiller
Cindy Rimmelin
Francisca Rodriguez
Andrea Rosen
Cindy Roshon
Nick Ruggiero
Linda Sattler
Kevin Scanlon
Catherine Scannell
Allison Schaefer
Louise Schlatter
Beverly Schmoll
Mary Schoen
Joe Schreiber
Harry Schulman
Gwen Schult
Andrew Screptock
Brian Screptock
Sadaf Sediqe
Sandra Sedlmeier
Carol Seton
Marsha Shaffer
Jane Shambaugh
Sue Shaneck
Thomas L. Sheffler
Denise Shepler
Shauna Shepler
Betty Sherman
Jason Shultz
Jim Sielicki
Michael Simko
Samanthia Skiver
Libby Smith
Ruth Ann Smith
Nancy Smythe
Bernard Spiegel
Marissa Stevenson
Katherine R. Stover
Barbie Strasbourg
Claudia Sundberg
Ica Sutter
Claire Swallen
Kimberly Swirbul
Teri Swolsky
Anne Szumigala
Polly Tate
Teresa Taylor
Matthew Temple
Ann Ten Eyck
Cathy Teufel
Jacqueline Thai
Margaret (Peg) Traband
Joan Travis
Kathleen Traynor
Mark Troknya
Kimberly Vander Horst
Mary Ann Vogel
Andy Wagner
Bonita Wakefield
Gloria Walker
Marilyn Walker
Ruth Walker
Jillian Ward
Ann Weber
Ruth (Cookie) Westmeyer
Melissa Whalen
Melissa White
Sheryn White
Ashley Wilkensen
Willie Williams
Rebecca Zechman

Employee List as of June 30, 2010

Abdullah, Amal
Adkins, Marie
Alexander, George
Almester, Betty Ann
Anderson, Lorell
Angelo, Raymond
Antalek, Francis
Atkins, Marcia
Bachmeyer, Edward Jr.
Baker, Alice
Baker, Calvin
Baker, Eric
Bandeem, Jennifer
Barbee, Phillippe
Barczak, Daniel
Barnhill, Beverly
Barta, John
Barth, Gail
Begley, Ira
Bernard, Paul
Berning-Matell, Audrey
Bernthistle, Jill
Bibbs, Yolanda
Biel, Rachel
Bigelow, Rod
Bilger, Kristie
Bintz, Carol
Bissel, Catherine
Bjorn, Dennis
Blankenship, Heather
Bloom, Emily
Bobak, David
Bohland, Timothy
Booher, Wesley
Boss, Lydia
Bott, RoseAnn
Boyer, Jeffrey
Brand, Paul
Branson, Mary
Brasch, Leah
Breitwieser, Karen
Bremer, Megan
Broeg, Emily
Brown-Gray, Paula
Brownlee, Earl
Brug, James
Burke, Joseph
Burke, Thomas
Byers , Rebecca
Campos, Mario
Caruso, Emily
Family Center Assistant
Assistant Head Usher
Utility Worker/Special Events Worker
Visitor Services Representative
Catering— On Call
Gallery Guard
Gallery Guard
Cash Receipts Clerk
Visitor Services Representative
Gallery Guard
Gallery Guard
Glass Technician
Community Outreach Coordinator
Gallery Guard
Instructor
Administrative Assistant
Gallery Guard
Student Assistant
Gallery Guard
Physical Plant Manager
Professional Services Team Coordinator
Instructor
Gallery Guard
Educational Resource Coordinator
COO
Museum Store Sales Associate
Development Officer—Planned Gifts
Gallery Guard
Gallery Guard
Museum Store Manager
Catering— On Call
Assistant Head Usher
Gallery Guard
Instructor
Glass Assistant
Gallery Guard
Conservation Technician
Instructor
Visitor Services Representative
Graphic Designer
Gallery Guard
Visitor Services Representative
Catering— On Call
Instructor
Gallery Guard
Gallery Guard
Grounds—Temporary
Maintenance
Class Registrar
Catering— On Call
Student Assistant

Employee List as of June 30, 2010 *(continued)*

Cephas, Whitney	Museum Store Sales Associate
Cervantes, Marcianna	Catering— On Call
Christiansen, Eric	Gallery Guard
Cieply, Philip	Gallery Guard
Clark, Janet	Assistant Head Usher
Coats, Rae	Visitor Services Representative
Collins, Clark	Gallery Guard
Collins, Gary	Gallery Guard
Collins, Kathleen	Gallery Guard
Conlan, Teresa	Assistant Librarian
Copley, Jamie	Instructor
Cothorn, Steve	Glass Studio, Assistant Manager
Cousins, Kelly	Senior Sales Clerk
Covarrubias, Jacqueline	Gallery Guard
Crissman, Danielle	Instructor
Crooks, John	Gallery Guard
Crumley, Laura	Protective Services Supervisor
Cunningham, Spencer	Instructor
Curry, Russell	Art Packer/Handler I
Dajnak, Mary (Mania)	Instructor
David, Lara	Development Officer
DeHan, Annabelle	Gallery Guard
Deiger, Mary Gay	Development Officer for Major Gifts
Delatore, Elizabeth	Ceramics Assistant
DePriest, Jason	Art Packer/Handler I
DeVol, Kerri	Special Events Coordinator
Diaz, Pamela	Volunteer Services Assistant
Dibling, David	Assistant Head Usher
Dilday, Amy	Instructor
DiPofi, Mary Claire	Human Resources Assistant
Dixon, Ronald	Gallery Guard
Donofrio, Vincent	Gallery Guard
Draeger, Julie	Instructor
Duffy, Thomas	Art Packer/Handler
Dumke, Dale	Gallery Guard
Duncan, Dennis	Gallery Guard
Dusseau, James	Gallery Guard
Duty, Lynn	Docent Programs Coordinator
Eggerstorfer, Nicole	Gallery Guard
Ehret, John	Protective Services Supervisor
Eschrich, Megan	Museum Store Sales Associate
Feaganes, Eileen	Gallery Guard
Felix, Joseph	Food Services Senior Associate
Fenikile, Tesfaye	Gallery Guard
Fitch, Ann	Gallery Gurad
Fitzgerald, Vivian	Purchasing Administrator
Fixler, Claude	Exhibitions Designer
Fleming, Amanda	Instructor
Ford, Clara	Gallery Guard
Foshag, Lori	Assistant Director Education & Community Outreach

Employee List as of June 30, 2010 *(continued)*

Fowler, Elizabeth	Catering— On Call
Gaewsky, Timothy	Art Packer/Handler
Galayda, Janet	Executive Secretary to the Director
Garcia, John	Food Services Senior Associate
Garrow, Kelly	Director of Communications
Gaynier, Mary	Utility Worker/Special Events
Geisinger, Linda	Volunteer Services Coordinator
Gilliland, Tom	Gallery Guard
Gilman, Amy	Assoc. Curator Modern & Contemp. Art & Assist. Director of Collections for Exhibitions
Godfrey, Sherri	Facilities Manager
Goldberg, Adam S	Glass Studio Assistant
Goldsmith, Jason	Cook— On Call
Gottschalk, John	Gallery Guard
Greaney, Thomas	Gallery Guard
Guerra, Brenda	Student Assistant - Ceramics
Hallauer, Marion	Gallery Guard
Hammersmith, Chelsey	Studio Monitor/Student Assistant
Hare, Richard	Gallery Guard
Harer, Linda	Development Assistant
Hargrove, Suzanne	Head Conservator
Harvey, Michelle	Marketing Communications Mgr.
Hasselkus, Nancy	Accounts Payable Clerk
Hauser, Jillian	Catering— On Call
Hayes, Julia	Associate Curator, VRC
Haynes, ,Herville	Maintenance Mechanic I
Hedler, Susan	Instructor
Hernandez, Daniel	Senior Sales Associate
Hill, Edward	Works on Paper Assistant
Howell, Lunette	Manager of Professional Services Team
Huftalen, Alison	Head Librarian
Hughes, David	Utility Worker/Special Events
Hughes, Heather	Glass Technician
Jankowski, Regina	Early Childhood Coordinator
Jaskolski, Taylor	Catering— On Call
Jenkins, Mary (Megan)	Instructor
Johnson, Patricia	Visitor Services Representative
Jones, Harold	Gallery Guard
Jones, Luther	Gallery Guard
Jones, Robert	Dishwasher
Kanfield, Sr., Dennis	Assistant Head Usher
Kapszukiewicz, Karan	Instructor
Karsiotis, Susan	Utility Worker/Special Events
Kawczynski, Eugene	Gallery Guard
Kecskes, Irene	Library Assistant
Kemmerley, Stephen	Instructor
Keyes, Lisa	Visitor Services Representative
King, Eamon	Glass Technician
Kinkaid, Dianne	Facilities Assistant
Klein, Dianne	Docent Programs Coordinator
Klewer, James	Gallery Guard

Employee List as of June 30, 2010 *(continued)*

Kline, Robb	Gallery Guard
Knudsen, Sandra	Assoc. Curator of Ancient Art & Scholarly Publications Coordinator
Kolasky, David	Glass Studio Teaching Assistant
Kowalski, Andrew	Glass Technician
Krohn, Robert	Gallery Guard
Kroll, John	Gallery Guard
Kujawski, Corey	Art Project Assistant
Kutz, Connie	Executive Assistant
Lamanna, Jane	Instructor
Lane, Mary	Glass Technician
Langley-Jones, Philip	Gallery Guard
Lee, Joey	Utility Worker
Lefevre, Jared	Membership
Lefevre, Robert	Gallery Guard
Lenoir, Michael	Utility Worker
Lepkowski, Elizabeth	Instructor
Loeffler, Thomas	Assistant Curator, Works on Paper
Losek, Dennis	Gallery Guard
Lutman, Douglas	Catering–On Call
Mack, Jeffrey	Glass Studio Manager
Macklin, Courtney	Lead Sales Associate
Makadsi, Andrew	Catering–On Call
Mall, Andrea	Assistant Registrar
Martenies, John	Gallery Guard
Martin, Irene	Head Usher
Marty, Dante	Grounds–Temporary
Marty, Leonard	Master Instructor/Glassmaking
Mauchmar, Macon	Groundskeeper
McCarthy, Michael	Utility Worker/Special Events
McClure, Lisa	Docent Education Coordinator
McClure, Padraic	Grounds - Temporary
McDonald, Albert	Gallery Guard
McGreevy, Kevin	Groundskeeper
McMaster, Julie	Archivist
Melchor, Wynema	Gallery Guard
Merritt, Catherine	Museum Store Sales Associate
Meyerholtz, Kristin	Instructor
Mikkelsen, Margaret	Communications Coordinator
Miller, Carolyn	Gallery Guard
Miller, Donald	Instructor
Miller, Kathryn	Development Officer - Major Gifts
Mitchell, Marilyn	Gallery Guard
Moore, Sandy	Manager of Technology Services
Moritz, Blair	Catering - On Call
Motz, Timothy	Educational Media Administrator
Mylek, Lindsay	Instructor
Nearing, Harriet	Instructor
Neuber, Stephanie	Museum Store Sales Associate
Newman, Debra	Utility Worker/Special Events
Nichols, Lawrence	William Hutton Curator of European and American Painting and Sculpture Before 1900

Employee List as of June 30, 2010 *(continued)*

Nietz, Leah	Instructor
Nowak, Steven	Director of Education & Community Outreach
Nowicki, Paula	Instructor
Nugent, Paul	Gallery Guard
Oberhaus, Kimberly	Administrative Assistant, Conservation
Ody-Miller, Janine	Instructor
Oehlers, Alexa	Student Assistant
Oliger, Corinne	Family Center/Youth Programs
Osborne, Kim	Assistant Controller
Osborne, Whitney	Visitor Services Representative
Outten, Tara	Catering–On Call
Overholt, Justin	Student Assistant
Packard, Nadia	Instructor
Page, Jutta-Annette	Curator of Glass and Decorative Arts
Palmer, Susan	Director of Development
Patterson, Jason	Glass Studio Assistant Manager
Pinciotti, Gabriel	Gallery Guard
Pohlad, Matt	Utility Worker/Special Events
Poisel, Megan	Docent Education Coordinator
Poole, Jeffrey	Gallery Guard
Priehs, Michael	Catalog Librarian
Prince, Marsha	Gallery Guard
Putney, Carolyn	Director of Collections & Curator of Asian Art
Quigg, James	Gallery Guard
Rapp, Erika	Director of Culinary & Museum Services
Rapp, Phoebe	Instructor
Rasey, Ray	Gallery Guard
Ray, Carol	Professional Services Team Coordinator
Redrup, Gary	Gallery Guard
Reich, Paula	Curatorial Projects and Publications Manager
Remaklus, David	Instructor
Rich, Michael	Gallery Guard
Ritchey, Sarah	Student Assistant
Robertson, Leslie	Glass Assistant
Rockwood, Paul	Instructor & Glass Arts Studio Technician
Rogers, Robin	Glass Assistant
Roman, Richard	Maintenance Mechanic
Rose, James	Gallery Guard
Rubel, George	Gallery Guard
Rubin, Ellen	Instructor
Ruebel, Hans	Instructor
Ruiz, Andrew	Sous Chef
Ryan, Michael	Library Research Assistant
Sample, Angela	Sculpture Technician
Sanders, Daniel	Gallery Guard
Schneider, Donald	Instructor
Schultes, Robin	Instructor/Technican
Screptock, Brian	Museum Store Sales Associate
Screptock, Sylvia	Professional Services Team Coordinator
Seeburger, Jr., Gilbert	Maintenance Worker
Serota, Karen	Head of Exhibitions

Employee List as of June 30, 2010 *(continued)*

Sharp, Teresa	Manager of Public Relations
Shaw, Hal	Gallery Guard
Sheehan, Kelly	Glass Studio Assistant
Shepler, Alison	Payroll Specialist
Sherlock, James	Instructor
Shipman, James	Assistant Curator, VRC
Shockley, Hazell	Utility Worker/Special Events
Shriver, Allison	Development Officer Membership
Sieczkowski, Marcella	Gallery Guard
Sirk, Stephen	Gallery Guard
Skinner, Wesley	Gallery Guard
Slawson, Eric	Instructor
Sloan, Nathan	Network Administrator
Smith, Amber	Studio Technician
Smith, Brian	Gallery Guard
Smith, Robin	Gallery Guard
Smith, William	Gallery Guard
Sommers, Robert	Gallery Guard
Spencer, Elizabeth	Collections Database Assistant
Sperry, Monica (Edgerton)	Instructor
St. John, Kirk	Catering–On Call
Stiefel, Geraldine	Gallery Guard
Stock, Mary	Programs Coordinator
Stover, Timothy	Glass Technician
Strancar, Brien	Glass Technician
Summers, Salena	Café Associate
Swanson, Roy	Gallery Guard
Syrek, Dana	Development Officer for Corporate & Foundation Funding
Szczepanski, Timothy	Chief of Protective Services
Szymanski, Elizabeth	Grounds–Temporary
Szymanski, Margaret	Gallery Guard
Szymanski, Timothy	Controller
Taynor, Jennifer	Grounds–Temporary
Tebbe, Amanda	Café Associate
Thanasiu (Gareau), Ann	Gallery Guard
Thomas, Adam	Glass Studio
Thomsen, Ronald	Groundskeeper–Temporary
Thum, Kathleen	Instructor
Timar, Amy	Utility Worker/Special Events
Tohle, Diann	Human Resources Administrator
Tomassetti, Pamela	Visitor Services–Temporary
Towner, John	Gallery Guard
Trinchero, Anne	Gallery Guard
Turner, Nicole	Student Assistant
Tweney, Kathleen	Associate Librarian
Urbank, David	Manager, Visitor Services
Van Wormer, Jeanne	Café Associate
Vandenberg, Arthur	Utility Worker/Special Events
Vannii, Gianni	Catering–On Call
Vargas, Emily	Catering–On Call

Employee List as of June 30, 2010 *(continued)*

Vasko, Carolyn	Visitors Services Representative
Vnuck, Kenneth	Gallery Guard
Vozobule, Julie	Library Clerk
Wagoner, Miriam	Student Assistant
Walker, Gloria	Visitor Services–Temporary
Wallace, Michael	Instructor
Wannemacher, Alex	Cook–On Call
Warren, Alexander	Visitor Services–Temporary
Warren, Karen	Finance Assistant
Weinberg, Judith	Adult & Public Programs Coordinator
Weiser, Andrew	Museum Store Assistant Manager
Werdehoff, Joanelle	Catering Assistant
Whitesides, Patricia	Registrar
Wilka, Ronald	Gallery Guard
Winfield, J’Vann	Instructor
Woodard, Lon	Gallery Guard
Yurosko, Thomas	Gallery Guard
Ziemke, Linda	Instructor

Ambassadors

Yolanda Mora-Calderon	Ambassador – Provisional
Cyndee Detrick	Ambassador – Provisional
Yolanda Durden	Ambassador – Provisional
Linda Irving	Ambassador – Provisional
Lynda Kalucki	Ambassador – Provisional
Beverly Karp	Ambassador – Provisional
Judy Reitzel	Ambassador – Provisional
Judy Pearson	Ambassador – Provisional
Beverly Schmoll	Ambassador – Provisional
Susan Shaneck	Ambassador – Provisional
Margaret Traband	Ambassador – Provisional
Mary Ann Vogel	Ambassador – Provisional
Rebecca Zechman	Ambassador – Provisional
Elaine Bachev	Ambassador – Active
Randi Betz	Ambassador – Active
Suzanne Bond	Ambassador – Active
Marci Braun	Ambassador – Active
Susan Cardone	Ambassador – Active
Susan Croci	Ambassador – Active
Barbara Cutillo	Ambassador – Active
Colleen Taylor Demczuk	Ambassador – Active
June Effler	Ambassador – Active
Elizabeth Emmert	Ambassador – Active
Carol Esplin	Ambassador – Active
Ditte Galbraith	Ambassador – Active
Louise Gregory	Ambassador – Active
Claudia Handwork	Ambassador – Active
Carol Fadell Horrigan	Ambassador – Active
Johanna Hull	Ambassador – Active
Janet Killam	Ambassador – Active
Angie King	Ambassador – Active
Susan Kruse	Ambassador – Active
Oona Temple Lucienne	Ambassador – Active
Susan Miller	Ambassador – Active
Constance Murphy	Ambassador – Active
Ellen Navarre	Ambassador – Active
Sheila Odesky	Ambassador – Active
Gayle Parseghian	Ambassador – Active
Lori Paton	Ambassador – Active
Nancy Ravin	Ambassador – Active
Kathleen Reed	Ambassador – Active
Karen Ridenour	Ambassador – Active
Cindy Rimmelin	Ambassador – Active
Diane Rombes	Ambassador – Active
Cindy Roshon	Ambassador – Active
Linda Sattler	Ambassador – Active
Catherine Scannell	Ambassador – Active
Nancy Smythe	Ambassador – Active
Claudia Sundberg	Ambassador – Active
Jane Switzer	Ambassador – Active
Teri Swolsky	Ambassador – Active

Ambassadors *(continued)*

Patti Tuschman	Ambassador – Active
Susan Van der Veer	Ambassador – Active
Judy Wagner	Ambassador – Active
Patricia Wittenberg	Ambassador – Active
Sharon Allen	Ambassador – Sustaining
Theresa Andrews	Ambassador – Sustaining
Nancy Ankney	Ambassador – Sustaining
Marilyn Arbaugh	Ambassador – Sustaining
Kay Ball	Ambassador – Sustaining
Carol Bardi	Ambassador – Sustaining
Ursula Barrett	Ambassador – Sustaining
Cecile Bennett	Ambassador – Sustaining
Gill Bentley	Ambassador – Sustaining
Nancy Beren	Ambassador – Sustaining
Barbara Biggs	Ambassador – Sustaining
Dee Blumer	Ambassador – Sustaining
Molly Boeschstein	Ambassador – Sustaining
Jeanette Bradley	Ambassador – Sustaining
Margot Brauer	Ambassador – Sustaining
Ellie Brunner	Ambassador – Sustaining
Lois Burke	Ambassador – Sustaining
Susan Carr	Ambassador – Sustaining
Deborah Chapman	Ambassador – Sustaining
Skipper Christen	Ambassador – Sustaining
Judith Cohen	Ambassador – Sustaining
Jean Conkle	Ambassador – Sustaining
Suzanne Cook	Ambassador – Sustaining
Barbara Coon	Ambassador – Sustaining
Dora Crowther	Ambassador – Sustaining
Barbara Cummins	Ambassador – Sustaining
Anita Daverio	Ambassador – Sustaining
Claudia Day	Ambassador – Sustaining
Mary DiSalle	Ambassador – Sustaining
Maureen Donovan	Ambassador – Sustaining
Hope DuCharme	Ambassador – Sustaining
Judith Dye	Ambassador – Sustaining
Helen Emmert	Ambassador – Sustaining
Nancy Fairhurst	Ambassador – Sustaining
Eugenie Fauver	Ambassador – Sustaining
Sanda Findley	Ambassador – Sustaining
Carol Fox	Ambassador – Sustaining
Carol Geraciotti	Ambassador – Sustaining
Teri Giacci	Ambassador – Sustaining
Sally Giauque	Ambassador – Sustaining
Barbara Goldberg	Ambassador – Sustaining
Ruth Hanson	Ambassador – Sustaining
Mary Jo Hardy	Ambassador – Sustaining
Nita Harrington	Ambassador – Sustaining
Nancy Heymann	Ambassador – Sustaining
Margaret Hiett	Ambassador – Sustaining
Ann Jane Hileman	Ambassador – Sustaining

Ambassadors *(continued)*

Anne Hirsch	Ambassador – Sustaining
Margaret Hodges	Ambassador – Sustaining
Sue Howe	Ambassador – Sustaining
Phyllis Ide	Ambassador – Sustaining
Dee Isaac	Ambassador – Sustaining
Darlene Johnson	Ambassador – Sustaining
Nancy Kabat	Ambassador – Sustaining
Titi Kakissis	Ambassador – Sustaining
Barbara Kaplin	Ambassador – Sustaining
Irene Kaufman	Ambassador – Sustaining
Jane Keller	Ambassador – Sustaining
Shari Kellermeyer	Ambassador – Sustaining
Rita Kern	Ambassador – Sustaining
Carol Kistler	Ambassador – Sustaining
Mary Ann Kline	Ambassador – Sustaining
Stacey Kripke	Ambassador – Sustaining
Martha Kudner	Ambassador – Sustaining
Anne Lathrop	Ambassador – Sustaining
Peggy Lewis	Ambassador – Sustaining
Tracy Lindke	Ambassador – Sustaining
Lynn Lippman	Ambassador – Sustaining
Jean MacMillan	Ambassador – Sustaining
Susan Martin	Ambassador – Sustaining
Doris McEwen	Ambassador – Sustaining
Karen Merrels	Ambassador – Sustaining
Holly Metzger	Ambassador – Sustaining
Diane Miller	Ambassador – Sustaining
Sharmon Minns	Ambassador – Sustaining
Andrea Monoky	Ambassador – Sustaining
Kitty Moore	Ambassador – Sustaining
Marian Moore	Ambassador – Sustaining
Jane Mulford	Ambassador – Sustaining
Lindy Munn	Ambassador – Sustaining
Stephanie Murtagh	Ambassador – Sustaining
Donna Niehous	Ambassador – Sustaining
Susan Palmer	Ambassador – Sustaining
Linda Pawlecki	Ambassador – Sustaining
Jill Peterson	Ambassador – Sustaining
Suzanne Petti	Ambassador – Sustaining
Diane Phillips	Ambassador – Sustaining
Carol Pletz	Ambassador – Sustaining
Nancy Quandt	Ambassador – Sustaining
Susan Reams	Ambassador – Sustaining
Barbara Reed	Ambassador – Sustaining
LaNelle Rhodes	Ambassador – Sustaining
Leslie Risley	Ambassador – Sustaining
June Roshe	Ambassador – Sustaining
Ruth Rudduck	Ambassador – Sustaining
Kathleen Ryan	Ambassador – Sustaining
Mary Saddemi	Ambassador – Sustaining
Ruth Ann Sailstad	Ambassador – Sustaining

Ambassadors *(continued)*

Ann Sawyer	Ambassador – Sustaining
Katie Schueler	Ambassador – Sustaining
Jeanie Silletti	Ambassador – Sustaining
Carol Simon	Ambassador – Sustaining
Brooke Simonds	Ambassador – Sustaining
Lois Slotterbeck	Ambassador – Sustaining
Doris Smith	Ambassador – Sustaining
Peg Smith	Ambassador – Sustaining
Diane Snyder	Ambassador – Sustaining
Vickie Souder	Ambassador – Sustaining
Lillian Spaulding	Ambassador – Sustaining
Suzanne Speck	Ambassador – Sustaining
Penny Staelin	Ambassador – Sustaining
Joelyn Stone	Ambassador – Sustaining
Prudy Stone	Ambassador – Sustaining
Pamela Straub	Ambassador – Sustaining
Ica Sutter	Ambassador – Sustaining
Eddy Taylor	Ambassador – Sustaining
Barbara Thierwechter	Ambassador – Sustaining
Margaret Trumbull	Ambassador – Sustaining
Ina Tuschman	Ambassador – Sustaining
Karen Uebelhart	Ambassador – Sustaining
Jean Voss	Ambassador – Sustaining
Dee Wainstein	Ambassador – Sustaining
Patty Westmeyer	Ambassador – Sustaining
Sue White	Ambassador – Sustaining
Jo Winzeler	Ambassador – Sustaining
Sandra Wiseley	Ambassador – Sustaining
Jacqueline Yocum	Ambassador – Sustaining
Nancy Zerner	Ambassador – Sustaining
Rhoda Berkowitz	Ambassador – Sustaining
Emme Bippus	Ambassador – Honorary
Gayle Mandle	Ambassador – Honorary
Kathy Steadman	Ambassador – Honorary
Tibble Foster	Founding Sustainer Emeriti
Marge Hunter	Founding Sustainer Emeriti



ANDREA

The best thing about Toledo!

Board of Directors

January 1–December 31, 2010

DIRECTORS

Michael J. Anderson
Vernelis K. Armstrong
Elizabeth Brady
Bruce C. Carver
George L. Chapman
Steven R. Coffin
Susan Croci¹
Charles E. Dana
Sara Jane DeHoff
Gay Deiger¹
Elizabeth Emmert²
James A. Hoffman
Billie Johnson
Dennis G. Johnson
George M. Jones III
Harley J. Kripke
Susan E. Morgan
Kim L. Penn
Mary Ellen Pisanelli
Richard I. Reynolds
Kelly Sheehan²
John S. Szuch
Cynthia B. Thompson
David K. Welles, Jr.

EMERITUS DIRECTOR

Richard P. Anderson

OFFICERS

Elizabeth Brady.....*Chair of the Board*
Steven R. Coffin*Vice Chair*
Cynthia B. Thompson*Vice Chair*
John S. Szuch*Secretary*
George L. Chapman*Treasurer*
Rod A. Bigelow*Interim Executive Director*³
Chief Operating Officer
Assistant Secretary
Assistant Treasurer
Carol Bintz*Chief Operating Officer*⁴
Brian P. Kennedy*President*
Director
*CEO*⁵

HONORARY DIRECTORS

Darryl F. Allen
Don Bacigalupi
William W. Boeschstein
Molly P. Chiles
Thomas B. Donnell
Helen H. Emmert
Nancy R. Fairhurst
Robert V. Franklin
Barbara Kaplin
Rita B. Kern
Robert J. Lanigan
Helen McMaster
Susan R. Reams
George B. Saxe
Duane Stranahan, Jr.
Edward F. Weber
Georgia Welles
John P. Williamson
Sandra L. Wiseley
Frederic D. Wolfe

DIRECTOR/CEO EMERITI

Darryl F. Allen
Don Bacigalupi
William W. Boeschstein
Molly P. Chiles

¹Through June 30, 2010 | ²As of July 1, 2010 | ³Through August 30, 2010 | ⁴Effective October 1, 2010 | ⁵Effective September 1, 2010

*2445 Monroe Street
Toledo, Ohio 43620
(419) 255-8000*

toledomuseum.org



Good for you. TMA