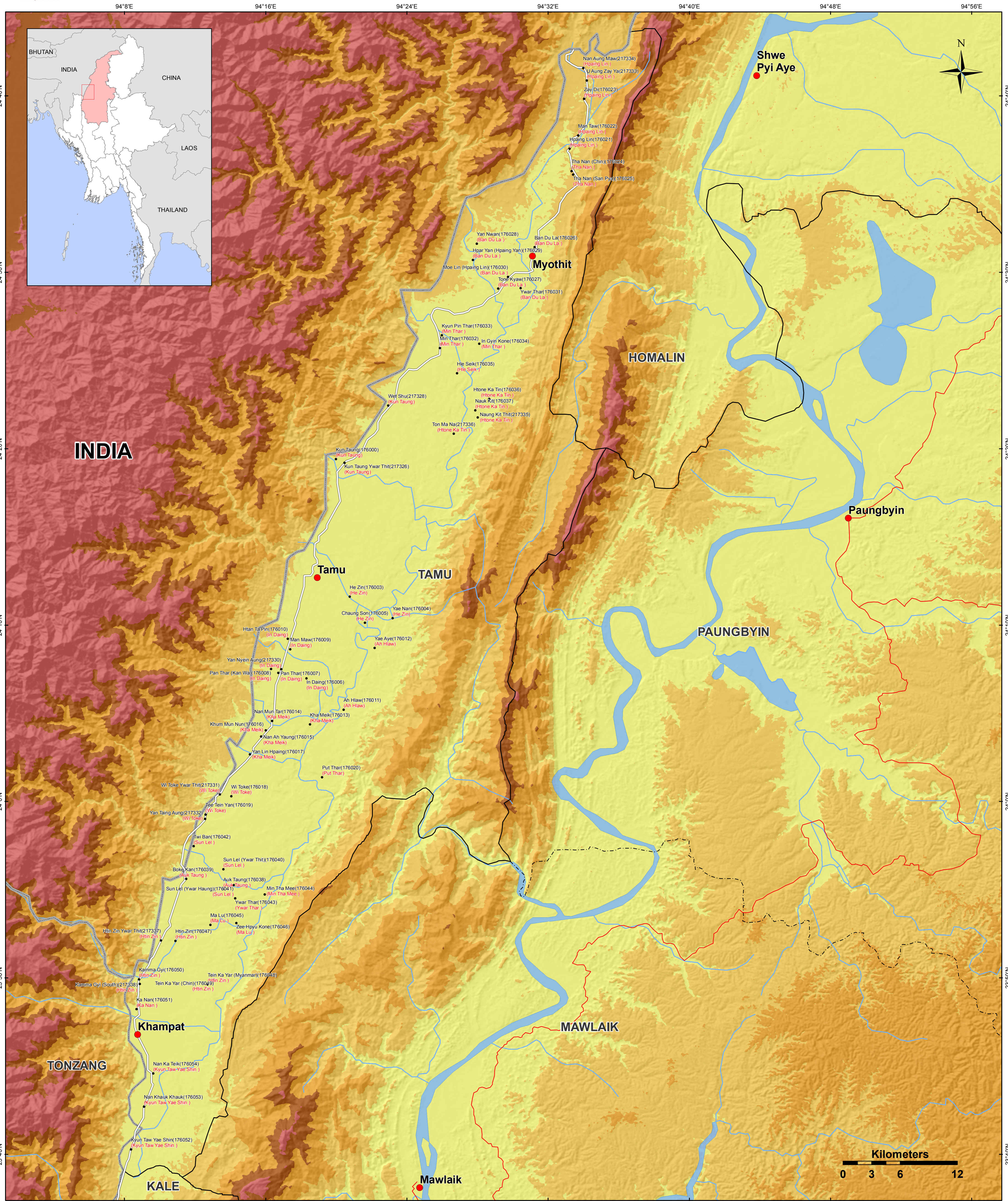


Tamu Township - Sagaing Region



Map ID: MIMU679v01
 Completion Date: 18 March 2013
 Projection/Datum: Geographic/WGS84

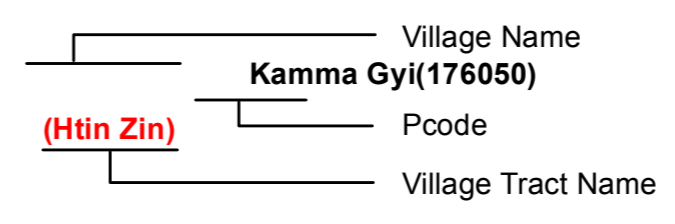
Data Sources:
 BASE MAP - MIMU; Boundaries - WFP, modified by MIMU 2008;
 Place names - Ministry of Home Affairs (GAD)
 translated by MIMU

Legend

- Villages
- Towns
- Major Road
- Minor Road
- Stream
- Railways
- - - Township Boundary
- District Boundary
- State Boundary
- International Boundary
- River

Elevation (Meter)

< 200
201 - 350
351 - 600
601 - 800
801 - 2,000



Myanmar Information Management Unit (MIMU) is a common resource of the Humanitarian Country Team (HCT) providing information management services, including GIS mapping and analysis, to the humanitarian and development actors both inside and outside of Myanmar.

Map produced by the MIMU - info.mimu@undp.org
website-themimu.info

Disclaimer: The names shown and the boundaries used on this map do not imply official endorsement or acceptance by the United Nations.