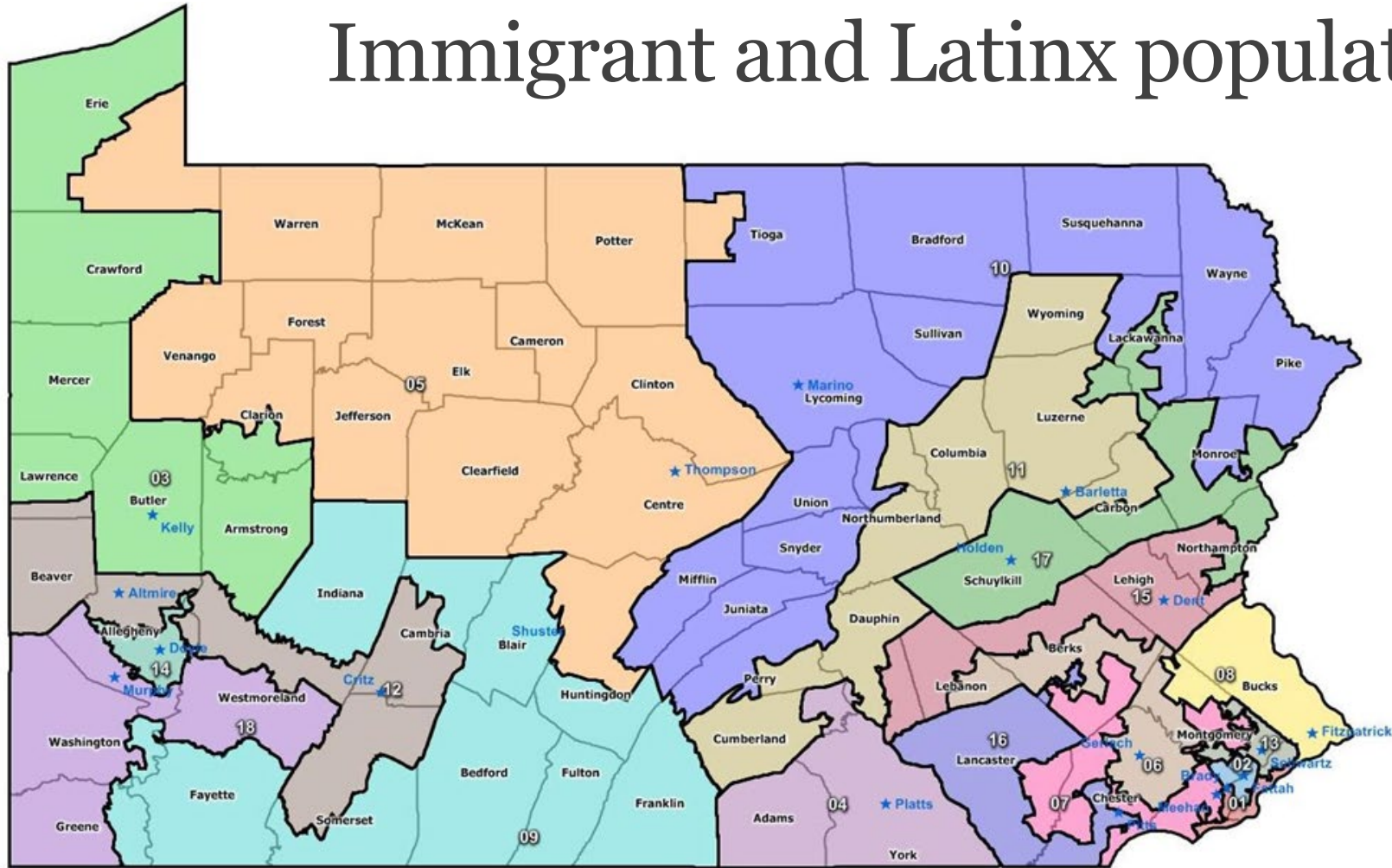


2020 Census

Immigrant and Latinx populations



Who are we talking about?

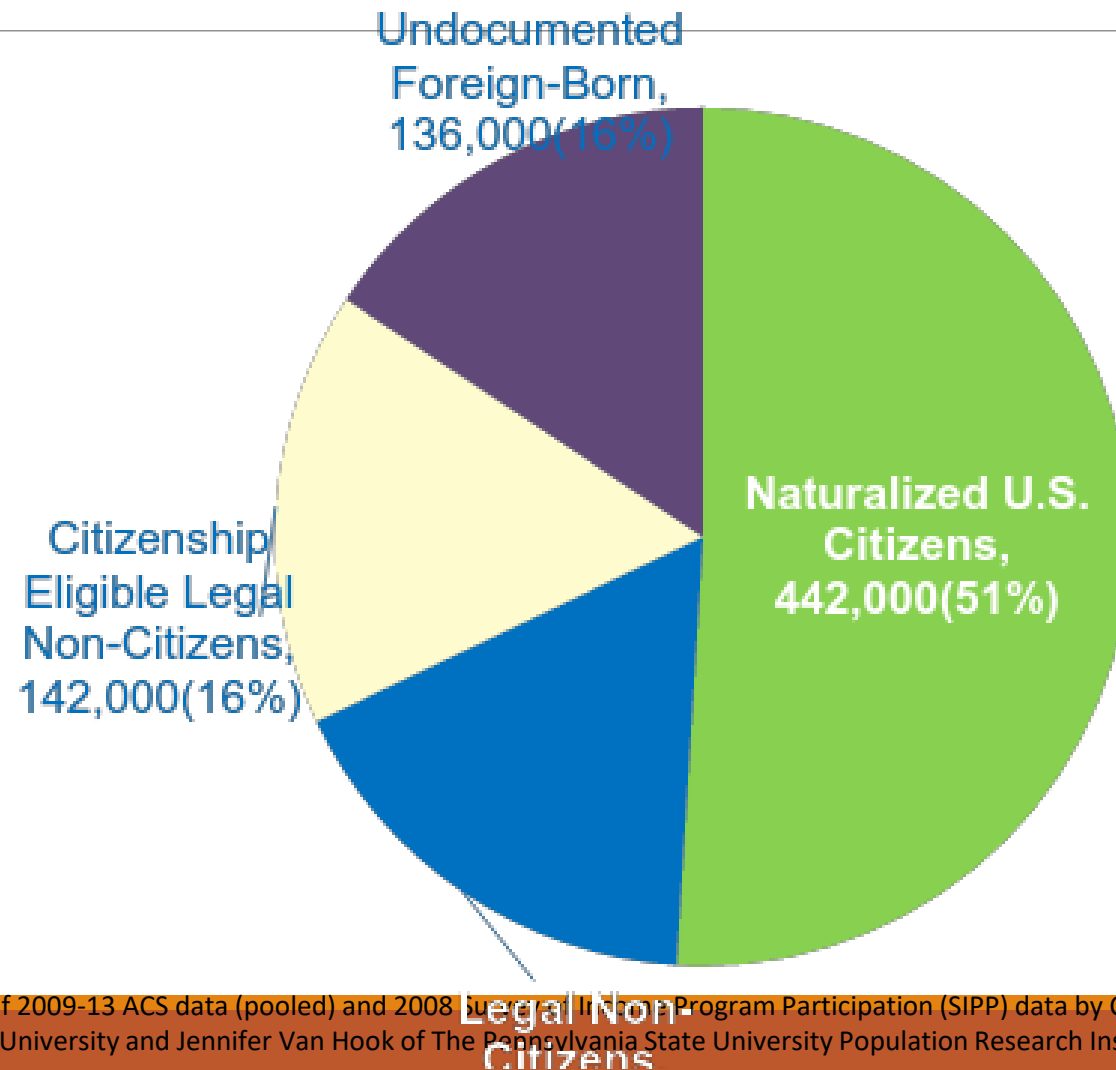
PA IMMIGRANT HOUSEHOLDS

- Approximately 750K foreign born residents in PA
- Asian, Latinx, African, European, speak hundreds of different languages
- Includes Naturalized Citizens, Legal Permanent Residents (Green Card Holders), Temporary Visa/Status (TPS, DACA, Student Visas, etc), Asylum Seekers, and Undocumented population
- Most immigrant families are MIXED STATUS, and include at least one US Citizen

PA LATINX HOUSEHOLDS

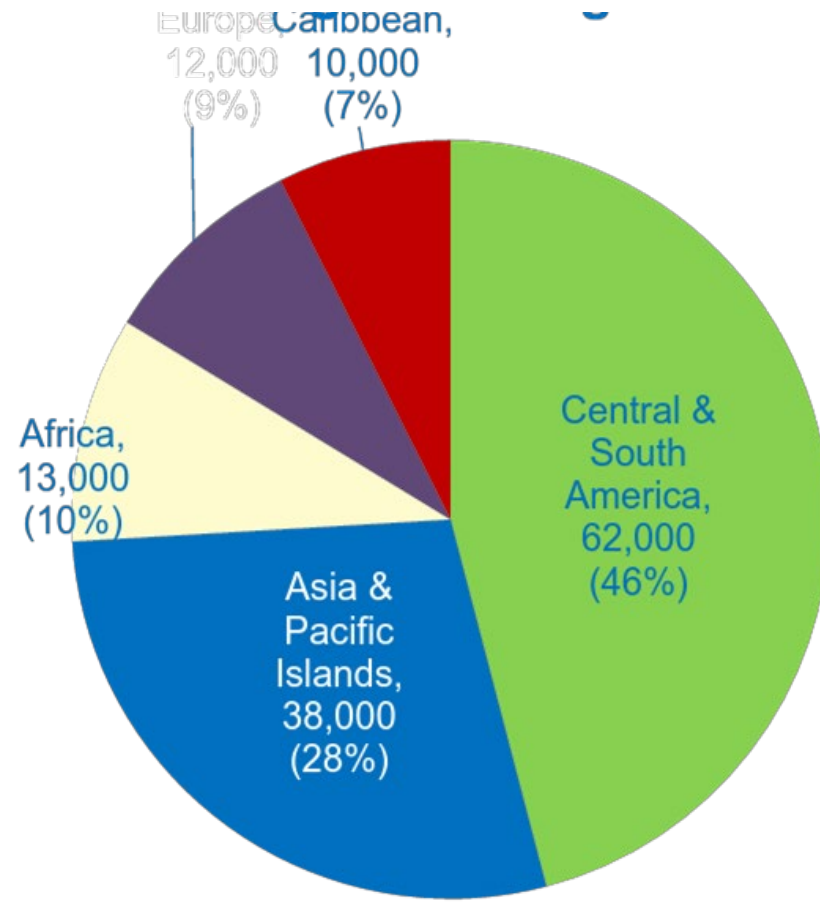
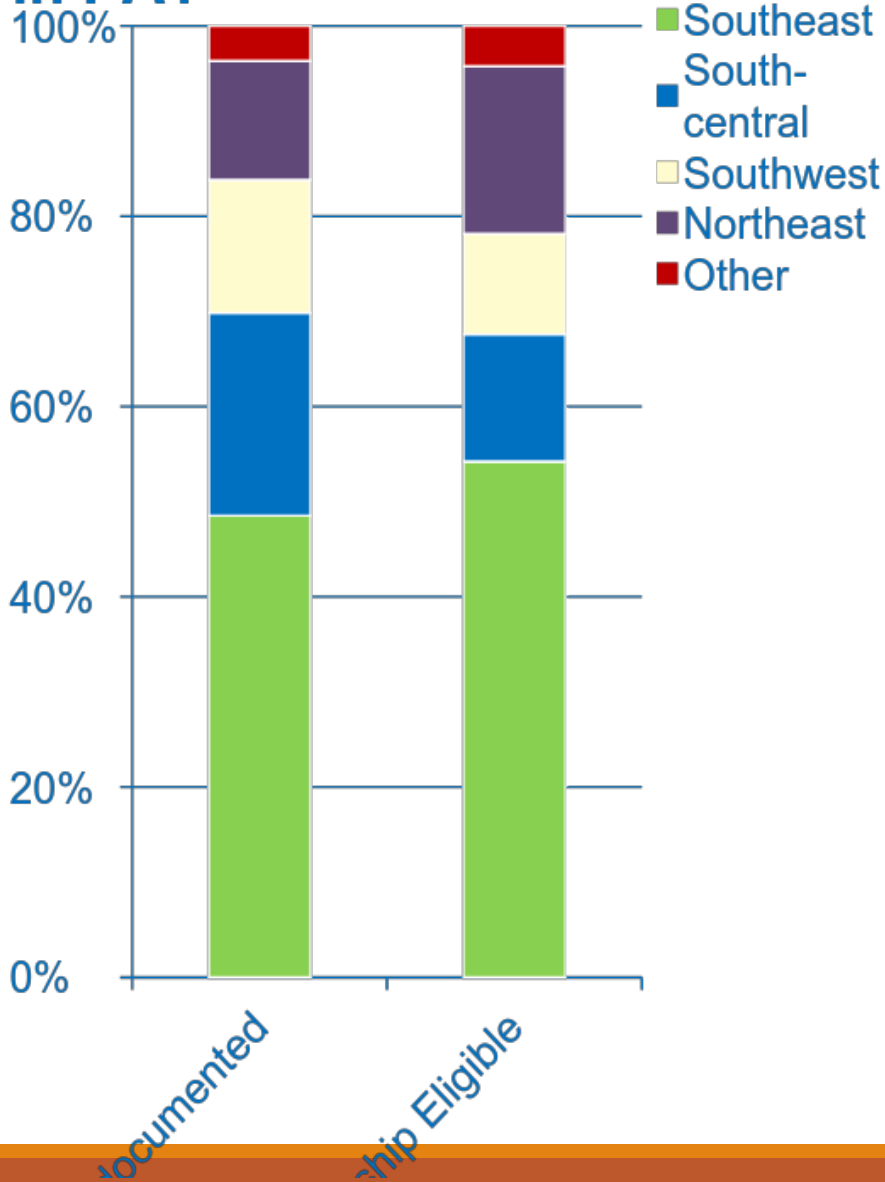
- Approximately 1 million Latin@ residents in PA
- Includes Latinx immigrants, US Citizens by birth (second or later generation), Naturalized US Citizens, and residents relocated from Puerto Rico
- Language usually correlates with length of time in continental US, English language ability is a challenge for first generation immigrants and new arrivals from PR, especially elderly

Foreign-Born Population in Pennsylvania by Legal Status, 2009-13

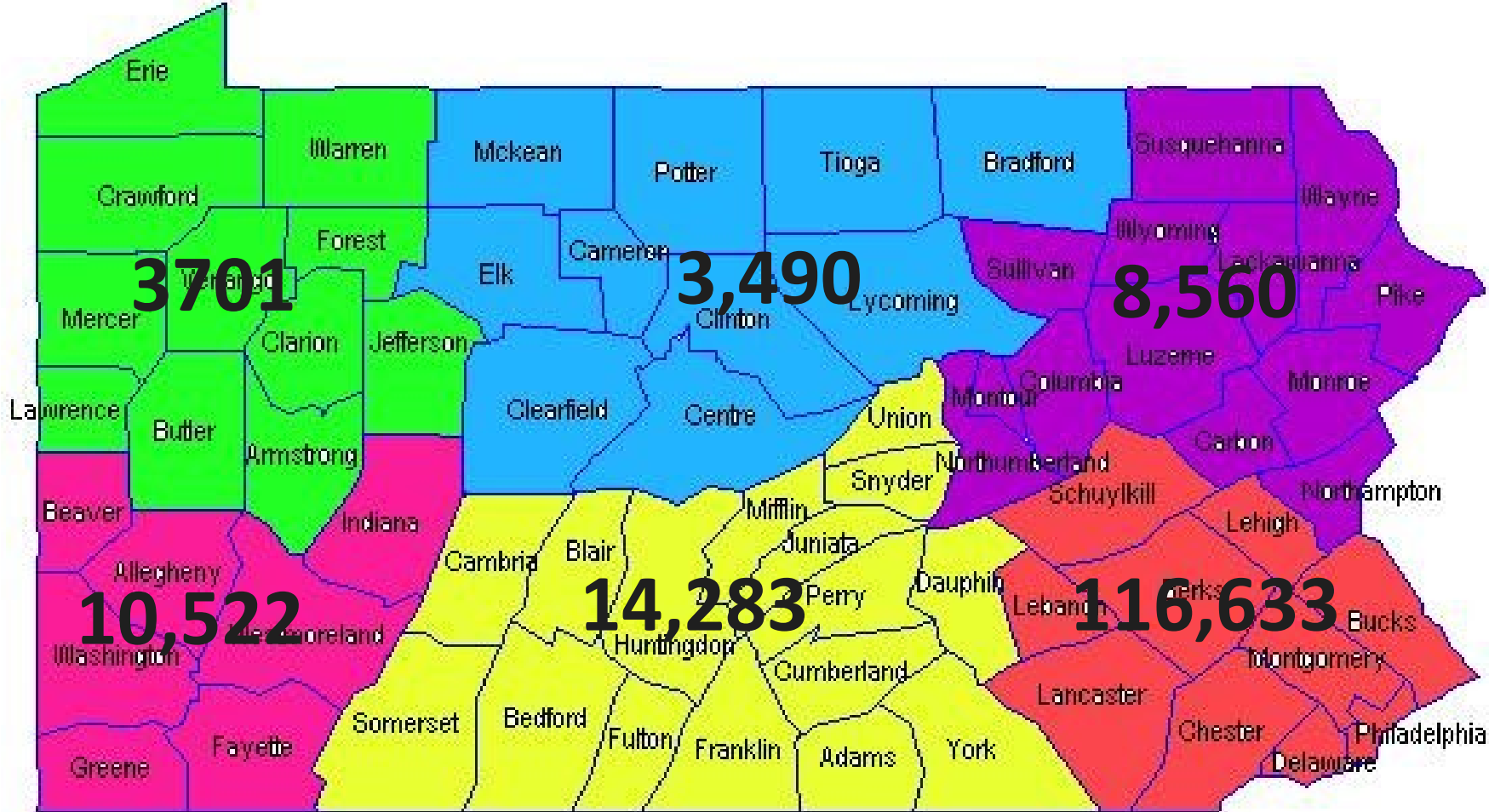


Source: MPI analysis of 2009-13 ACS data (pooled) and 2008 Survey of Income and Program Participation (SIPP) data by Colin Hammar and James Bachmeier of Temple University and Jennifer Van Hook of The Pennsylvania State University Population Research Institute.

Where Do Immigrants Live in PA?

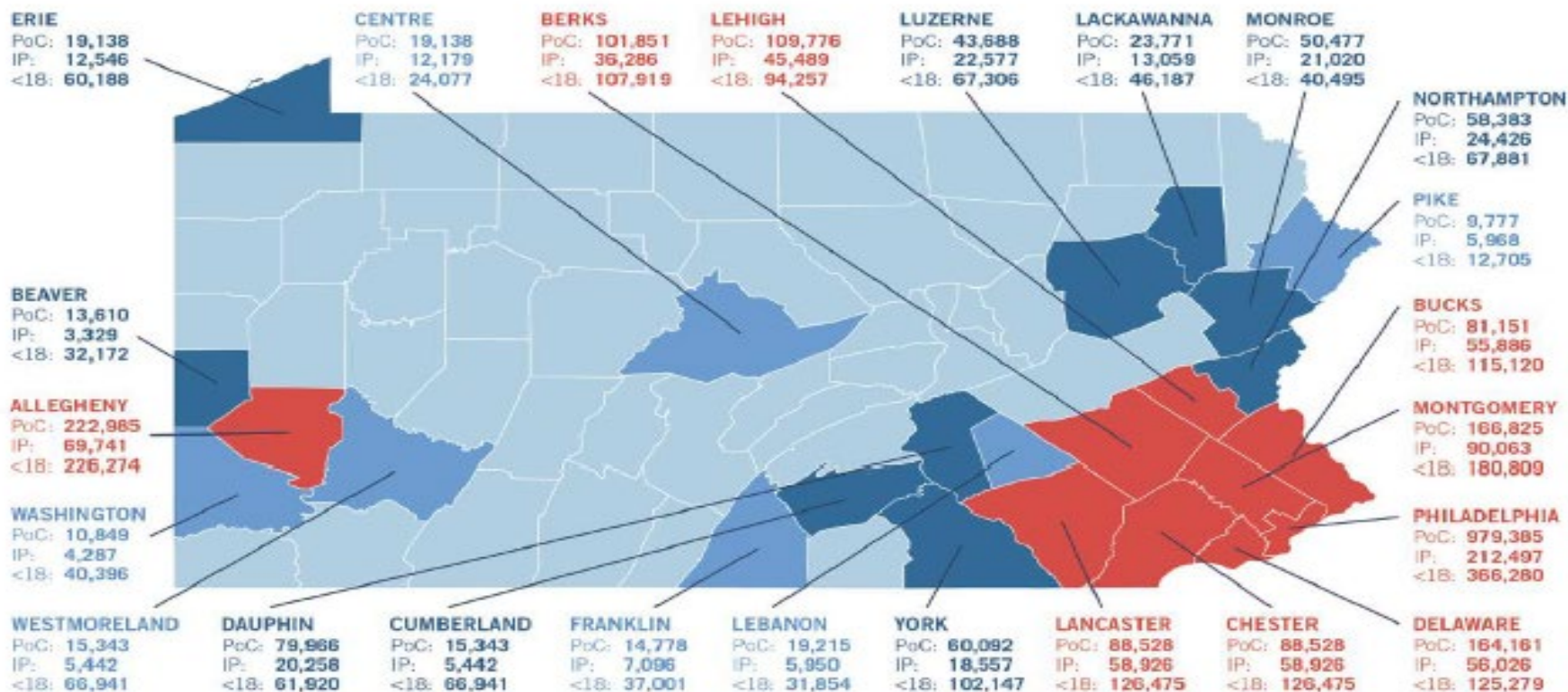


Undocumented Immigrants in PA



Source: Center for Migration Studies of New York (CMS)

Priority Hard to Count Populations



TIER 1 TIER 2 TIER 3

POPULATION OF COLOR (PoC) IMMIGRANT POPULATION (IP) UNDER 18 POPULATION (<18)

Puerto Ricans in PA

- 4th largest Puerto Rican population in continental US, including 8% of Philadelphia population, 30% of Lancaster population, large percent of populations in Allentown, Reading, Lebanon, and York
- PA # 2 state in receiving refugees from Puerto Rico post Hurricane Maria
- Over 10,000 new arrivals post Hurricane Maria, including many elderly residents
- Many still see Puerto Rico as “home”, PA residency is temporary



Anticipated 2020 Census Challenges

IMMIGRANT AND NEW PR ARRIVALS

- Language Access
- Technology Divide
- Should I be Counted in PA?
- Mistrust of US Government

ONLY IMMIGRANTS

- Citizenship Question
- Fear of Immigration Repercussions
- Mixed Status Families
- Confidentiality

Language Access

WHAT WE KNOW

-Online form languages: English, Spanish, Chinese, Vietnamese, Korean, Russian, Arabic, Tagalog, Polish. French, Haitian Creole, Portuguese, Japanese

-

CONTINUED ADVOCACY NEEDS

-Include diverse community leaders in local CCCs

- Language Access Availability noted in initial communications

- Educate census advocates and CCC members about language access using online tool and paper form

-Invest in community education efforts in primary language

Citizenship Question

WHAT WE KNOW

- The Citizenship Question has not been asked on any decennial census since the census began.
- With high levels of fear and mistrust of the administration in recent years among Latinx and immigrant populations due to policies and rhetoric, inclusion of the question will further exacerbate undercount
- Question is being challenged in court, SCOTUS expected to rule by the end of June

CONTINUED ADVOCACY

- If question prevails, confidentiality provisions become even more critical and must be defended via legislative and/or legal actions
- Advocates and CCCs will need to be prepared to answer questions
- Grassroots Education will be even more critical in these communities

Is this person a citizen of the United States?

Yes, born in the United States

Yes, born in Puerto Rico, Guam, the U.S. Virgin Islands, or Northern Marianas

Yes, born abroad of U.S. citizen parent or parents

Yes, U.S. citizen by naturalization – *Print year of naturalization* ↘

--	--	--	--

No, not a U.S. citizen

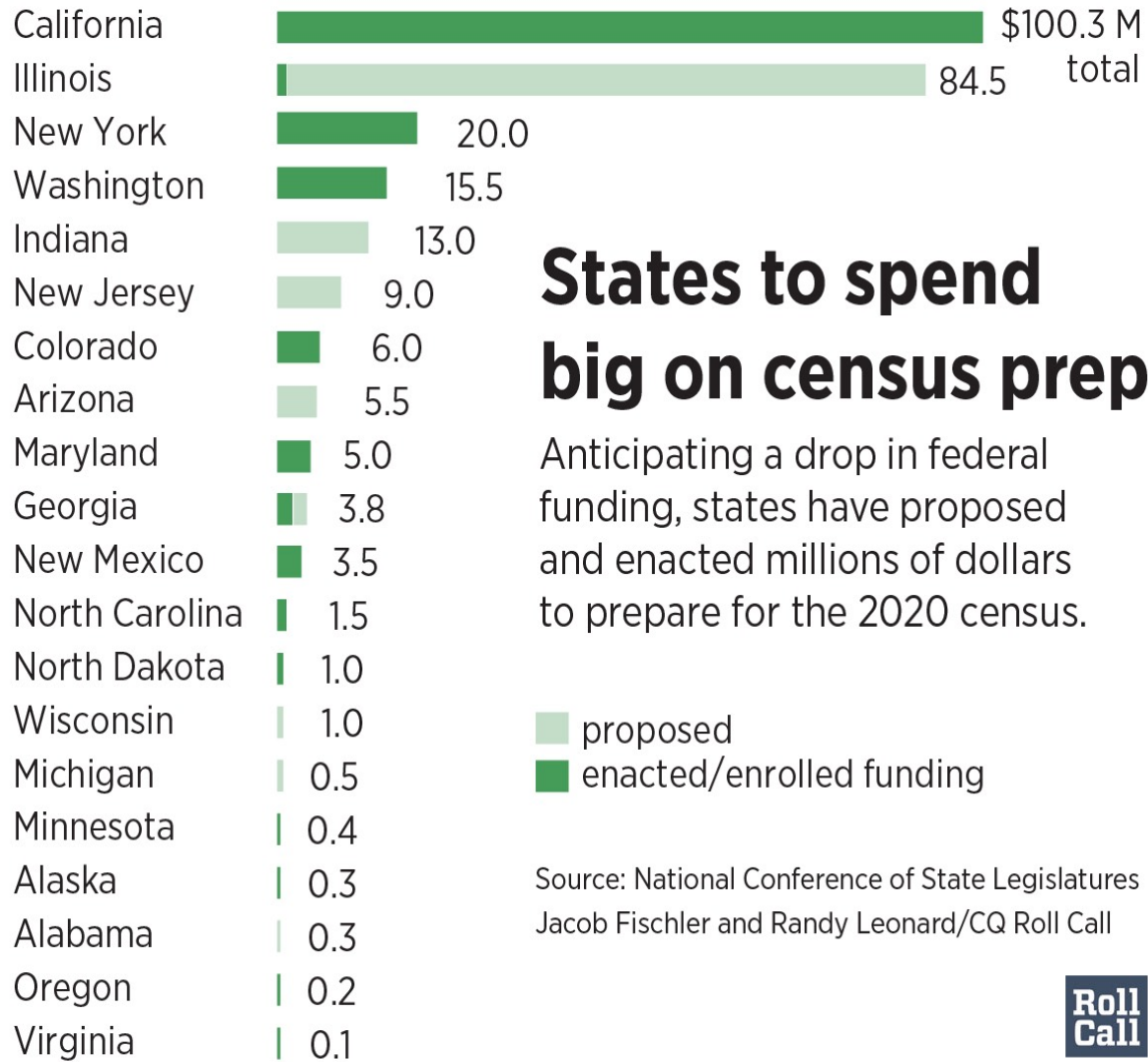
Messaging to Reach Immigrant and PR New Arrivals

WHAT WE KNOW

- Trusted Messengers and grassroots networks will be critical to reaching first generation PA immigrant and Latinx population
- Participation in the census as recognition that immigrant and Latinx populations are valuable parts of our community
- Most effective education to overcome mistrust and fear will be in person, in primary language, by someone who is familiar (neighbor, pastor, business owner, etc)

CONTINUED ADVOCACY

- Funding for targeted field programs and grassroots strategies to reach these populations will be critical, especially outside of urban centers where ethnic media has less reach



States to spend big on census prep

Anticipating a drop in federal funding, states have proposed and enacted millions of dollars to prepare for the 2020 census.

■ proposed
■ enacted/enrolled funding

Source: National Conference of State Legislatures
Jacob Fischler and Randy Leonard/CQ Roll Call



Investment will be critical to reaching 1st generation Immigrant and PR population