

Bayswater Station design features finalised

The updated Bayswater Station design includes architectural treatments that reflect the town's rail heritage. Inspired by the fluting prominent on Perth's current and past passenger trains, the ribbed finishes on the main structure progress from the structural designs released in May 2020 when the Evolve Bayswater Alliance commenced work. Final designs can now be viewed on the METRONET website.

These detailed designs are the culmination of more than two years of community consultation, through online surveys, community events, briefings, presentations, enquiries and community reference groups.

Design inspiration

Community consultation on this project since 2018 has shown a clear theme – heritage. This final design takes the area's rich rail history and applies it in a modern way.



Community feedback also inspired additional design enhancements, including cream coloured concrete, to help better integrate the station into the local community. The shelter design has also been updated with a wave design; covering approximately 70 per cent of the platforms with vertical screens to reduce wind.

Another key feature of the station's final design is the inclusion of one escalator, in addition to two lifts and sets of stairs per platform.

The single escalator to each platform balances community feedback – some people wanted escalators while many others wanted to maximise the space available for tenancies, amenities and activation in and around the station.

The design also reflects feedback from the Office of the Government Architect, State Design Review Panel, METRONET Noongar Reference Group and the METRONET Access and Inclusion Reference Group.

Landscaping and public art treatments will be finalised in the coming months.



Artist impression: Platform shelters offer approximately 70 per cent coverage, with colouring to add warmth to the design.



Artist impression: Platform canopy shelters with weather screening.



Artist impression: Retail or civic opportunities connect onto Railway Parade.



Artist impression: The bridge from Coode Street.

Design process explained

Building major infrastructure includes a lengthy design process that evolves through each design stage.

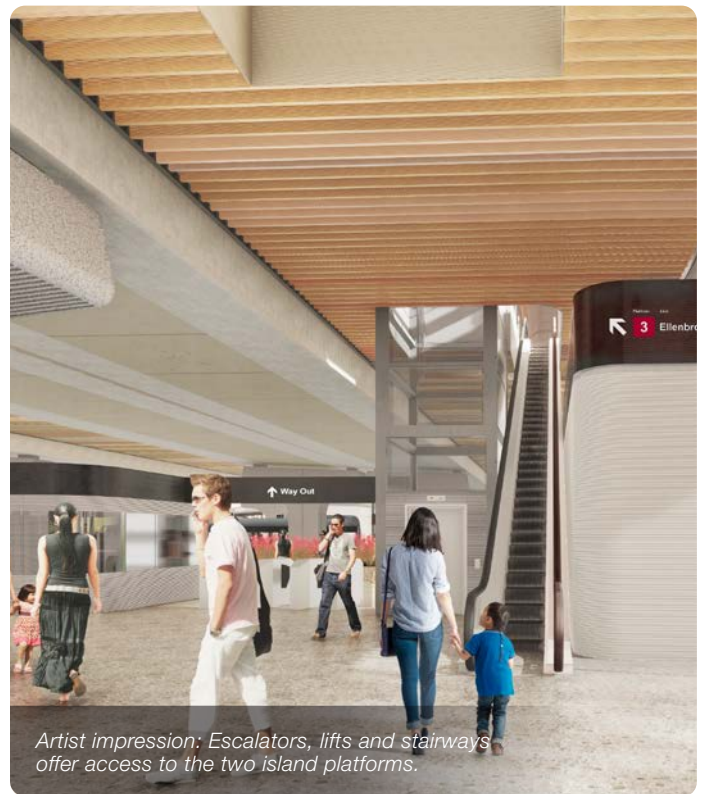
The new Bayswater Station Project is no different and since the project started in 2018, stakeholders have played a key role in shaping the station's design.

The newly released architectural treatments improve the aesthetic appeal of the station structure, building on previous design concepts.

Initial designs confirmed road layouts and key engineering elements, but excluded architectural treatments, landscaping and place activation.

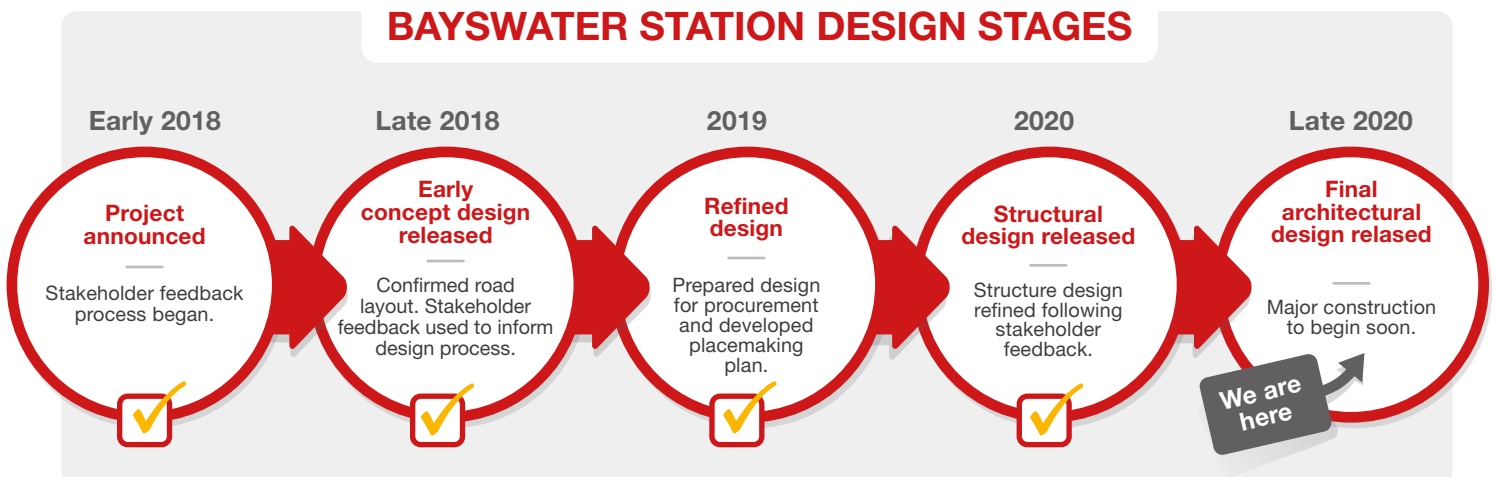
Work will continue on five place activation zones within the station precinct, and on public art.

The updated design has now been submitted to the Western Australian Planning Commission for development approval.

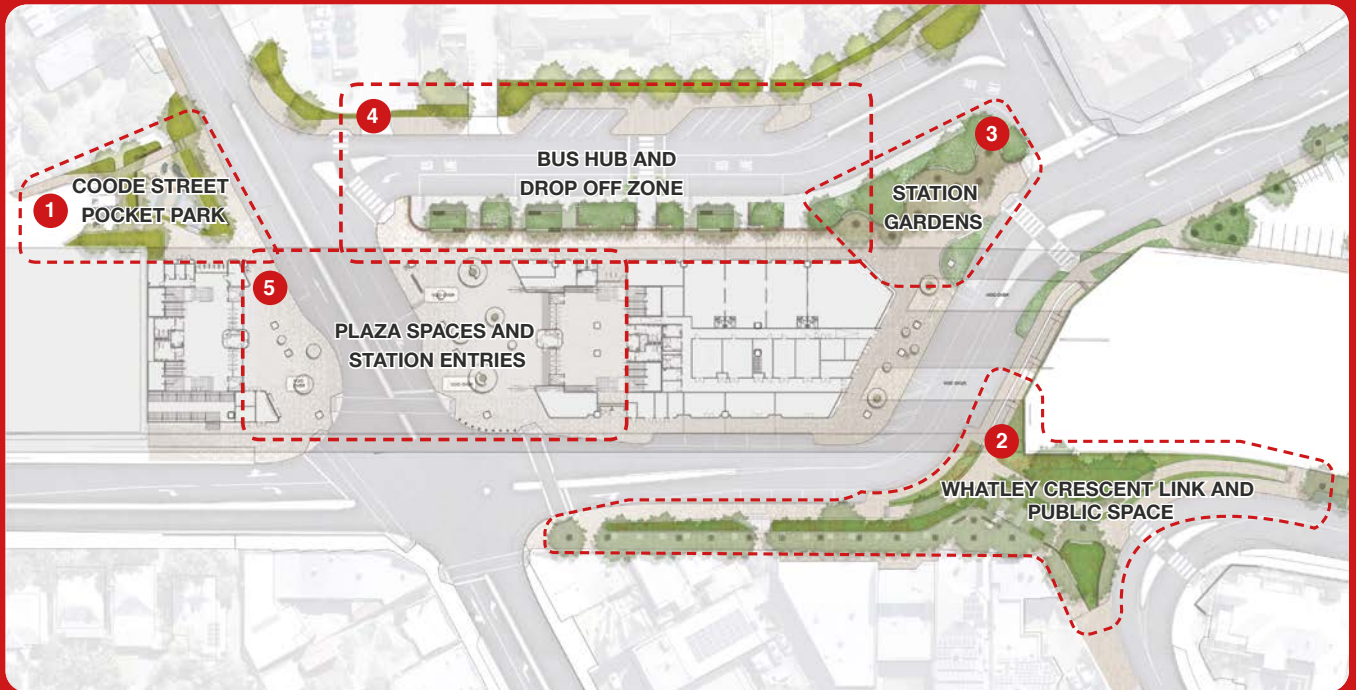


Artist impression: Escalators, lifts and stairways offer access to the two island platforms.

BAYSWATER STATION DESIGN STAGES



Integrating with the town centre



The new station's five activation spaces will integrate with the Bayswater town centre, bringing a blend of usable, pedestrian-friendly spaces for locals, passengers and businesses.

Zone 5 is the largest with approximately 800sqm of mostly undercover space next to the main entrance, making it big enough for formal activities or as an informal meeting place before people jump on the train or head into the Bayswater Town Centre. This is equivalent to 75 per cent of space available in the Perth CBD's Forrest Place.

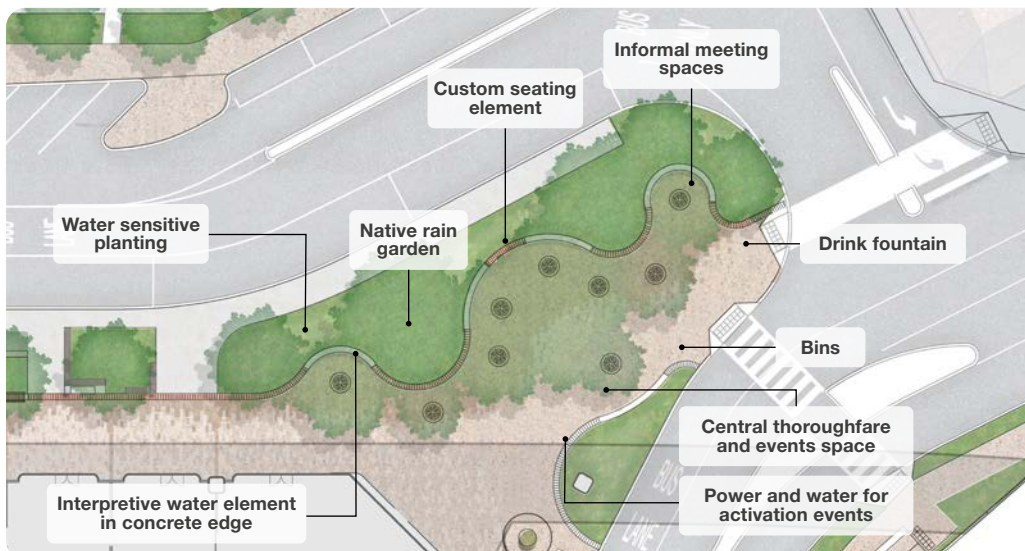
Community feedback showed that local people want spaces which allow for activities such as markets and performances – activities that service the local community but that also encourage new visitors to the town centre.

Opportunities to provide safe amenities for young people will continue to be explored with the City of Bayswater over the coming months.

In coming months a public art coordinator will be appointed to commission artwork which will reference the history of the town centre.



Zone-in-focus: Station Gardens – Zone 3



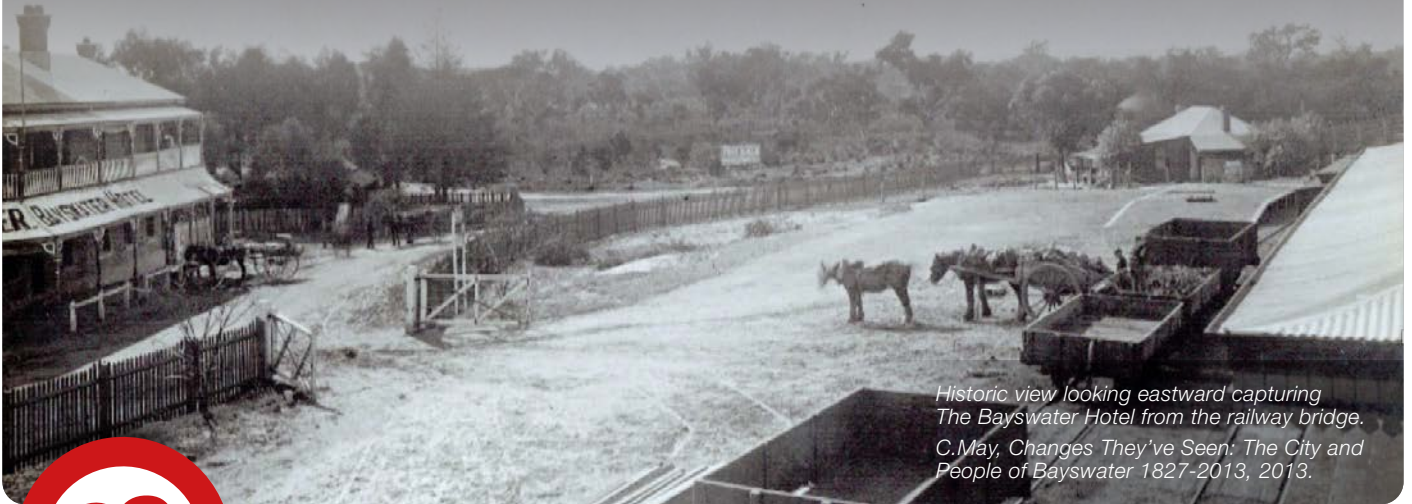
- Flexibility to support various scale events whilst maintaining a functional and comfortable space.
- Shade trees will over time create a dense canopy to sit beneath in a garden setting.
- Multiple seating areas will encourage people to use the area as a gathering place.

Celebrating Bayswater's rail heritage

Bayswater Station was established in 1888 as a simple railway siding which serviced the Perth to Guildford Railway.

In 1896 the first station building was built, paving the way for larger trains to use the line in the early 1900s.

Different kinds of steam trains used the track ranging from small suburban tank engines to large express trains for the eastern goldfields.



Historic view looking eastward capturing The Bayswater Hotel from the railway bridge. C. May, *Changes They've Seen: The City and People of Bayswater 1827-2013*, 2013.



Support local while construction is underway

As the focus shifts from design to construction, we understand the project works may be disruptive to local businesses.

We have started talking with local business owners to ensure that we understand their needs and can support them during construction.

To reinforce the importance of supporting local, the new Bayswater Station project will shine a spotlight on local businesses throughout construction, so keep an eye out in future updates for business profiles of your wonderful local traders.

Traffic changes and modelling

The road changes confirmed in late 2018 will be implemented as construction progresses.

Changes will include:

- Realigning Whatley Crescent to link with Beechboro Road South
- Reducing Whatley Crescent to a single lane in both directions from King William Street to Garrett Road
- Railway Parade will become one-way between Coode Street and Rose Ave, allowing for eastbound traffic only
- Removal of the signalised intersection at Coode Street and Railway Parade



Traffic modelling undertaken in conjunction with Main Roads WA highlights historic constraints of traffic movements through the town centre.

The capacity of the reconfigured road network will be optimised through traffic light phasing at the intersection of Whatley Crescent and King William Street.

The project will continue to explore traffic management initiatives with Main Roads WA and the City of Bayswater.


MORE INFORMATION


Email: info@metronet.wa.gov.au

Phone: 9326 3666

Web: metronet.wa.gov.au

 twitter.com/metronetperth

 facebook.com/perthmetronet

 facebook.com/groups/bayswaterstationupgrade/



METRONET

BUILDING FOR TOMORROW.