



## Cumulative Statistics

合計スタッツ / Statistiques cumulées

### JPN - Japan

#### After 3 games Player Totals

No.	Name	GP	TP	Field Goals			2 Points			3 Points			Free Throws		Rebounds			AS	TO	ST	BS	PF	FD	+/-	PTS
				M/A	%	M/A	%	M/A	%	M/A	%	OR	DR	TOT											
2	TOGASHI Yuki	3	56:24	7/17	41	3/7	43	4/10	40	1/1	100			5	5	2	1		6	2	-23	19			
6	HIEJIMA Makoto	3	54:22	10/21	48	7/12	58	3/9	33					2	4	6	6	1		4	4	8	-23	23	
8	HACHIMURA Rui	3	1:52:39	27/66	41	19/45	42	8/21	38	5/7	71	3	17	20	6	6	1	2	7	11	-66	67			
9	VENDRAME Leo	2	1:56																			-5			
12	WATANABE Yuta (C)	3	1:46:32	19/42	45	14/27	52	5/15	33	10/14	71	7	17	24	6	8	5	3	5	14	-72	53			
14	KANAMARU Kosuke	3	19:59	2/8	25	0/1	0	2/7	29	2/2	100	1	3	4			1		1	2	3	8			
18	BABA Yudai	3	1:24:12	12/22	55	10/16	63	2/6	33	3/4	75	3	6	9	9	8	3		6	8	-52	29			
23	EDWARDS Gavin Earl	2	40:45	4/10	40	2/5	40	2/5	40			3	5	8	5	4	2		5	1	-24	10			
24	TANAKA Daiki	3	1:08:30	7/21	33	5/13	38	2/8	25	2/2	100	1	5	6	11		1	1	10	1	-43	18			
32	SCHAFER Avi Koki	3	29:09	2/6	33	2/4	50	0/2	0	1/2	50	3	2	5			1		2	2	2	-13	5		
34	WATANABE Hugh	0																							
88	HARIMOTO Tenketsu	2	25:32	1/6	17	0/5	0	1/1	100					2	2	3	2	1		4	1	-12	3		
Team / Coach												5	10	15		1									
<b>Totals</b>				91/219	42	62/135	46	29/84	35	24/32	75	28	76	104	51	33	15	12	50	50	-66	235			
<b>Opponents</b>				115/229	50	78/126	62	37/103	36	34/45	76	42	102	144	74	29	18	10	52	51	66	301			

#### Team Totals

	JPN	Opponents
Points from Turnovers	32	33
Points in the Paint	96 (48/91) 53%	144 (72/109) 66%
Second Chance Points	24	50
Fast Break Points	45	36
Bench Points	45	107

#### Player Averages

No.	Name	GP	MPG	Field Goals			2 Points			3 Points			Free Throws		Rebounds			AS	TO	ST	BS	PF	FD	+/-	PPG
				M/A	%	M/A	%	M/A	%	M/A	%	OR	DR	TOT											
2	TOGASHI Yuki	3	18.8	2.3/5.7	41	1.0/2.3	43	1.3/3.3	40	0.3/0.3	100			1.7	1.7	1.7	1.7	0.7	0.3	2.0	0.7	-7.7	6.3		
6	HIEJIMA Makoto	3	18.1	3.3/7.0	48	2.3/4.0	58	1.0/3.0	33			0.7	1.3	2.0	2.0	0.3			1.3	1.3	2.7	-7.7	7.7		
8	HACHIMURA Rui	3	37.6	9.0/22.0	41	6.3/15.0	42	2.7/7.0	38	1.7/2.3	71	1.0	5.7	6.7	2.0	2.0	0.3	0.7	2.3	3.7	-22.0	22.3			
9	VENDRAME Leo	2	1.0																			-2.5			
12	WATANABE Yuta (C)	3	35.5	6.3/14.0	45	4.7/9.0	52	1.7/5.0	33	3.3/4.7	71	2.3	5.7	8.0	2.0	2.7	1.7	1.0	1.7	4.7	-24.0	17.7			
14	KANAMARU Kosuke	3	6.7	0.7/2.7	25	0.0/0.3	0	0.7/2.3	29	0.7/0.7	100	0.3	1.0	1.3			0.3		0.3	0.7	1.0	2.7			
18	BABA Yudai	3	28.1	4.0/7.3	55	3.3/5.3	63	0.7/2.0	33	1.0/1.3	75	1.0	2.0	3.0	3.0	2.7	1.0		2.0	2.7	-17.3	9.7			
23	EDWARDS Gavin Earl	2	20.4	2.0/5.0	40	1.0/2.5	40	1.0/2.5	40			1.5	2.5	4.0	2.5	2.0	1.0		2.5	0.5	-12.0	5.0			
24	TANAKA Daiki	3	22.8	2.3/7.0	33	1.7/4.3	38	0.7/2.7	25	0.7/0.7	100	0.3	1.7	2.0	3.7		0.3	0.3	3.3	0.3	-14.3	6.0			
32	SCHAFER Avi Koki	3	9.7	0.7/2.0	33	0.7/1.3	50	0.0/0.7	0	0.3/0.7	50	1.0	0.7	1.7		0.3		0.7	0.7	0.7	-4.3	1.7			
34	WATANABE Hugh	0																							
88	HARIMOTO Tenketsu	2	12.8	0.5/3.0	17	0.0/2.5	0	0.5/0.5	100					1.0	1.0	1.5	1.0	0.5		2.0	0.5	-6.0	1.5		
Team / Coach												1.7	3.3	5.0		0.3									
<b>Totals</b>				30.3/73.0	42	20.7/45.0	46	9.7/28.0	35	8.0/10.7	75	9.3	25.3	34.7	17.0	11.0	5.0	4.0	16.7	16.7	-22.0	78.3			
<b>Opponents</b>				38.3/76.3	50	26.0/42.0	62	12.3/34.3	36	11.3/15.0	76	14.0	34.0	48.0	24.7	9.7	6.0	3.3	17.3	17.0	22.0	100.3			

#### Team Averages

	JPN	Opponents
Points from Turnovers	10.7	11.0
Points in the Paint	32.0	48.0
Second Chance Points	8.0	16.7
Fast Break Points	15.0	12.0
Bench Points	15.0	35.7



## Cumulative Statistics

合計スタッツ / Statistiques cumulées

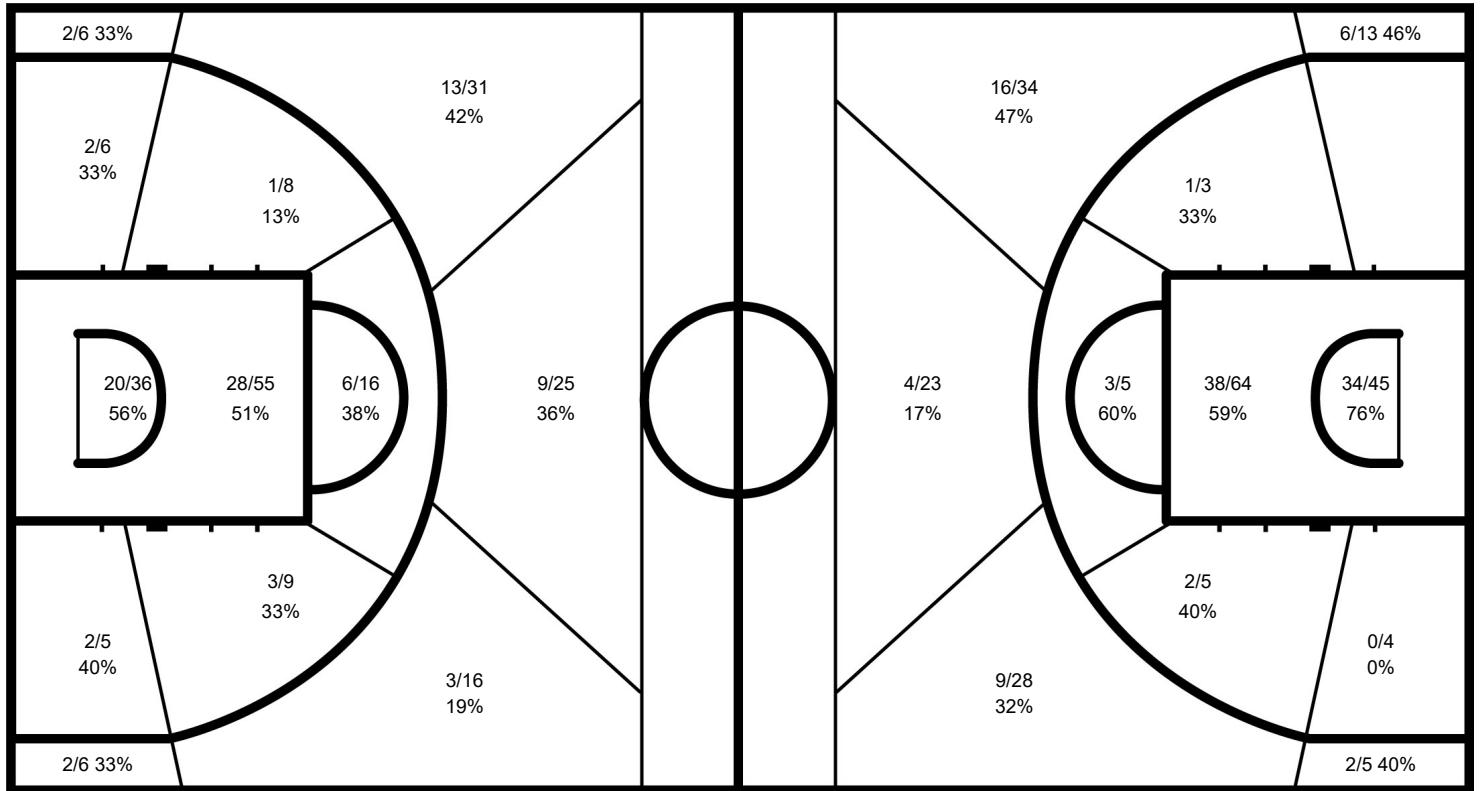
### JPN - Japan

After 3 games

Phase	JPN Played	Score		Field Goals		2 Points		3 Points		Free Throws		Rebounds			AS	TO	ST	BS	PF	FD
				M / A	%	M / A	%	M / A	%	M / A	%	OR	DR	TOT						
Preliminary Round Group C	ESP	77-88	For	26/64	41	15/37	41	11/27	41	14/18	78	8	24	32	20	11	7	3	16	21
			Agn.	36/70	51	28/42	67	8/28	29	8/11	73	10	32	42	20	11	5	3	21	17
Preliminary Round Group C	SLO	81-116	For	32/77	42	20/46	43	12/31	39	5/9	56	9	24	33	15	9	5	5	21	15
			Agn.	43/80	54	28/41	68	15/39	38	15/22	68	17	37	54	27	7	5	4	17	21
Preliminary Round Group C	ARG	77-97	For	33/78	42	27/52	52	6/26	23	5/5	100	11	28	39	16	13	3	4	13	14
			Agn.	36/79	46	22/43	51	14/36	39	11/12	92	15	33	48	27	11	8	3	14	13

#### JPN - Japan

#### Opponents



#### JPN

	M / A	%
Field Goals	91 / 219	42
2 Points	62 / 135	46
3 Points	29 / 84	35
Free Throws	24 / 32	75

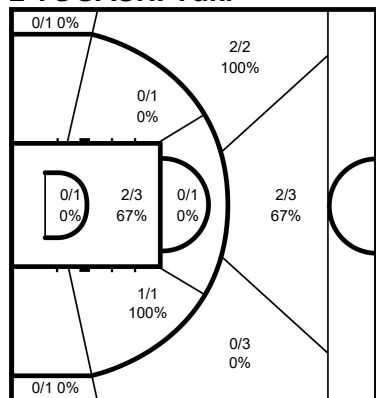
#### Opponents

%	M / A	
50	115 / 229	Field Goals
62	78 / 126	2 Points
36	37 / 103	3 Points
76	34 / 45	Free Throws



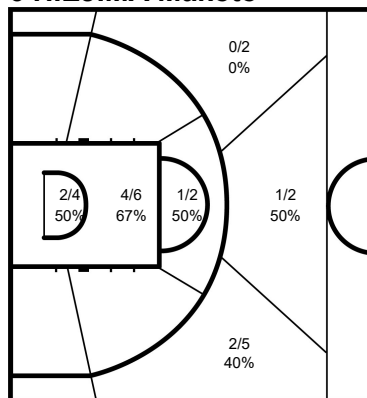
**Cumulative Statistics**  
合計スタッツ / Statistiques cumulées  
**JPN - Japan**  
After 3 games

**2 TOGASHI Yuki**



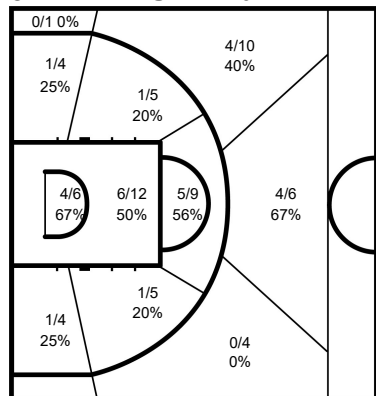
	M / A	%
Field Goals	7 / 17	41
2 Points	3 / 7	43
3 Points	4 / 10	40
Free Throws	1 / 1	100

**6 HIEJIMA Makoto**



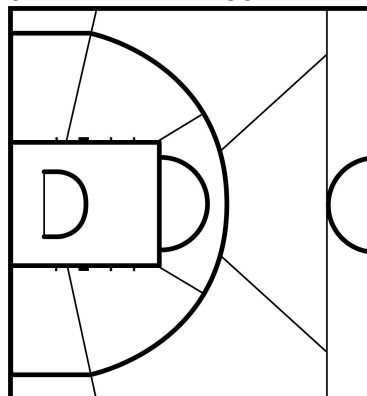
	M / A	%
Field Goals	10 / 21	48
2 Points	7 / 12	58
3 Points	3 / 9	33
Free Throws		

**8 HACHIMURA Rui**



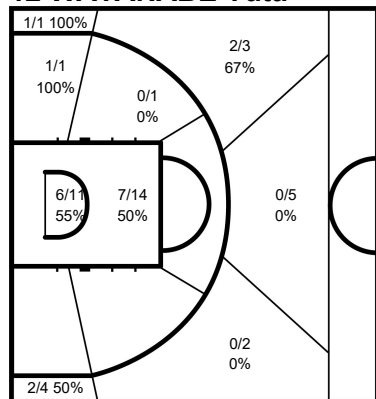
	M / A	%
Field Goals	27 / 66	41
2 Points	19 / 45	42
3 Points	8 / 21	38
Free Throws	5 / 7	71

**9 VENDRAME Leo**



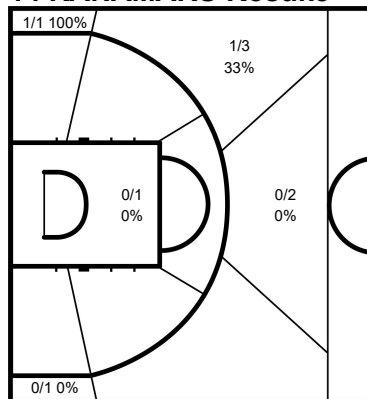
	M / A	%
Field Goals		
2 Points		
3 Points		
Free Throws		

**12 WATANABE Yuta**



	M / A	%
Field Goals	19 / 42	45
2 Points	14 / 27	52
3 Points	5 / 15	33
Free Throws	10 / 14	71

**14 KANAMARU Kosuke**

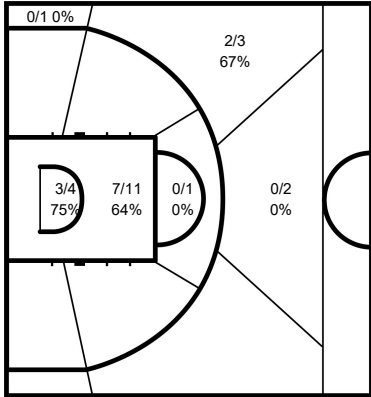


	M / A	%
Field Goals	2 / 8	25
2 Points	0 / 1	0
3 Points	2 / 7	29
Free Throws	2 / 2	100



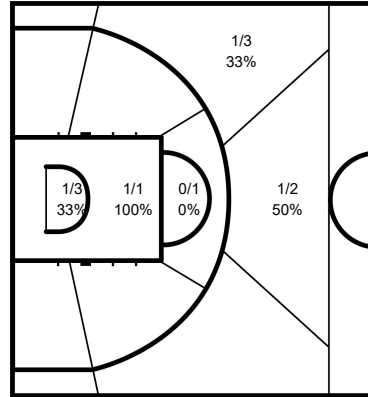
**Cumulative Statistics**  
合計スタッツ / Statistiques cumulées  
**JPN - Japan**  
After 3 games

**18 BABA Yudai**



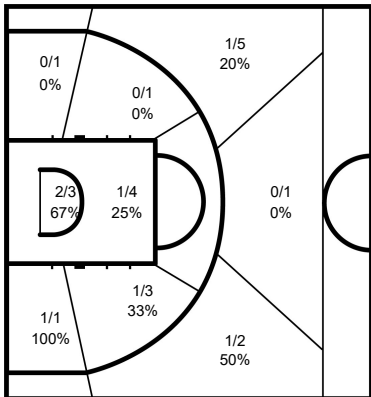
	M / A	%
Field Goals	12 / 22	55
2 Points	10 / 16	63
3 Points	2 / 6	33
Free Throws	3 / 4	75

**23 EDWARDS Gavin Earl**



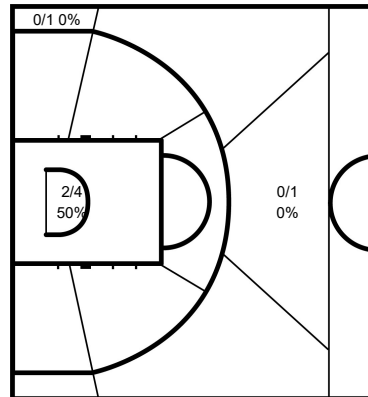
	M / A	%
Field Goals	4 / 10	40
2 Points	2 / 5	40
3 Points	2 / 5	40
Free Throws		

**24 TANAKA Daiki**



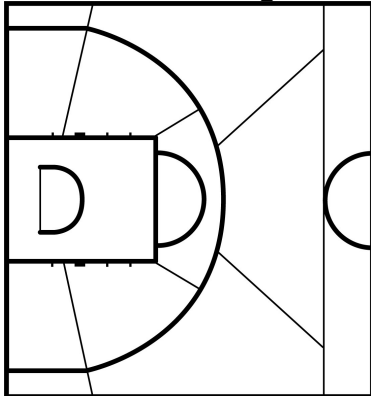
	M / A	%
Field Goals	7 / 21	33
2 Points	5 / 13	38
3 Points	2 / 8	25
Free Throws	2 / 2	100

**32 SCHAFER Avi Koki**



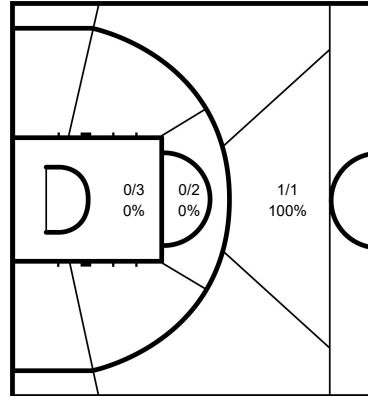
	M / A	%
Field Goals	2 / 6	33
2 Points	2 / 4	50
3 Points	0 / 2	0
Free Throws	1 / 2	50

**34 WATANABE Hugh**



	M / A	%
Field Goals		
2 Points		
3 Points		
Free Throws		

**88 HARIMOTO Tenketsu**



	M / A	%
Field Goals	1 / 6	17
2 Points	0 / 5	0
3 Points	1 / 1	100
Free Throws		

**Legend:**

%	Shooting Percentage	(C)	Captain	+/-	Plus-Minus	Agn.	Against	AS	Assists
BS	Blocked Shots	DR	Defensive Rebounds	FD	Fouls Drawn	GP	Games Played	M / A	Made / Attempts
MPG	Minutes Played per Game	No.	Uniform Number	OR	Offensive Rebounds	PF	Fouls	PPG	Points per Game
PTS	Points	ST	Steals	TO	Turnovers	TOT	Total Rebounds	TP	Time Played