



## A Leader and Partner in Computing Platform Services

Our relentless pursuit for excellence.  
Our passion for unsurpassed services.

Established in 1992, AAEON is one of the leading designers and manufacturers of advanced industrial and embedded computing platforms today. Committed to innovative engineering, AAEON provides integrated solutions, hardware and services for premier OEM/ODMs and system integrators worldwide. Reliable and high quality computing platforms include industrial motherboards and systems, industrial displays, rugged tablets, PC/104, PICMG and COM modules, embedded SBCs, embedded controllers, network appliances and related accessories. AAEON also offers customized end-to-end services from initial product conceptualization and product development on through to volume manufacturing and after-sales service programs.

With our continuous pursuit of innovation and excellence, AAEON has further strengthened

its leadership by leveraging advanced technology and resources from ASUS.

AAEON is poised to offer more diversified embedded products and solutions at higher quality standards to meet world-class design and manufacturing demands in the years to come.

AAEON is an Associate member of the Intel® Intelligent Systems Alliance.

### AAEON Core Values

#### Reliability:

Delivering trustworthy products on a timely manner

#### Integrity:

Valuing business integrity and ethics

#### Innovation:

Turn cutting-edge concepts into reality

# About AAEON



## System Level Products

AAEON has had outstanding achievements in delivering intelligent system products, such as Rugged Panel PCs, Expandable Industrial Computers, Full HD Infotainment Displays, Rugged Tablets, Embedded Computers and related accessories. These products can be applied today in all facets of Digital Signage, Transportation, Industrial Automation, Healthcare, Hospitality, Harbor/Marine, Military/Government and Energy sectors. AAEON offers fast customization services for its range of slim embedded computers and fanless embedded controllers (BOXER Easy program), and all other system products according to customer requirements and regulations. Having earned the highest degree of trust from Tier-1 customers, AAEON has furthered this service to end-to-end DMS services that can assist large customers with volume production, beginning with design to Contract Manufacturing. Quality assurance of our system products ensuring excellent product performance has been the key to our growing global customer base in all areas.



## Board Level Products

AAEON has had outstanding achievements with embedded boards: Compact Boards, SubCompact Boards, EPIC Boards, Pico-ITX Boards, RISC Boards, Qseven Boards, COM Express Modules, ETX Modules, XTX Modules, PC/104 Modules, PC/104 Peripheral Modules, Full Size and Half-Size SBCs with related accessories. With close collaboration with ASUS, AAEON is able to further extend its range of high-grade Mini-ITX, Micro-ATX and ATX industrial motherboards. These products can be applied widely in Industrial Automation, Military/Government, Smart Building, Energy, Multimedia, POS, Kiosk, Gaming, Transportation and Medical applications. As for wide temperature requirements, AAEON offers wide temperature boards that work in extreme conditions. AAEON's WiTAS (Wide Temperature Assurance Services) products recommend under either  $-20^{\circ}\text{C}$  to  $70^{\circ}\text{C}$  or  $-40^{\circ}\text{C}$  to  $85^{\circ}\text{C}$ . As an environmentally-friendly company, AAEON has focused on RoHS compliance with the development of lead-free manufacturing. Being well-known in the IPC industry for its experience and solid execution in OEM and ODM projects, offering one-stop shopping of embedded boards, AAEON is set to become your optimal Embedded Computing Platform Partner.

- AAEON awarded the Computex Taipei 2013 Best of Choice Award
- AAEON awarded the 21st Taiwan Symbol of Excellence Award

2013

- AAEON awarded the Taiwan Excellence Achievement Award
- AAEON awarded the 19th Taiwan Symbol of Excellence Award
- AAEON awarded Siemens Star Supplier 2011 Award
- AAEON awarded the Computex Taipei 2011 Best of Choice Award
- AAEON joins ASUSTeK Computer Inc. (ASUS)

2011

- AAEON awarded the Taiwan Superior Brand Award
- AAEON awarded the 17th Taiwan Symbol of Excellence Award
- AAEON awarded the 17th MOEA's Joint Award

2009

- AAEON receives Intel® Marketing Development Funds Award of Excellence
- AAEON receives Intel® Greatest Co-Selling Growth Award of Excellence
- AAEON attains ISO 13485 medical certification
- AAEON awarded the 15th Taiwan Symbol of Excellence Award
- AAEON awarded the Computex Taipei Best of Choice Award

2007

- AAEON awarded the Computex Taipei Best of Choice Award
- AAEON establishes a U.S. West Coast Sales Office in Brea, California
- AAEON moves Europe branch to the Netherlands

2005

- AAEON becomes an Associate Member of the Intel® Embedded Alliance

2003

- AAEON Technology Inc. is established in Su Zhou, China
- AAEON becomes a publicly traded company on Taiwan Stock Exchange
- AAEON sets up European office in Limburg, Germany

2001

- AAEON is listed as an OTC (Over The Counter) stock company
- AAEON Foundation is established to expand into humanity and technology

1999

- AAEON-USA, the premier off-shore branch office is established in New Jersey

1997

2014

- AAEON awarded the 22th Taiwan Symbol of Excellence Award
- AAEON receives Intel® IoT Solutions Alliance Member Performance Award

2012

- AAEON awarded the Golden Award of the Computex Taipei 2012 Best of Choice Award
- AAEON awarded the 20th Taiwan Symbol of Excellence Award
- AAEON awarded Microsoft® Windows Embedded Partner of Year 2012

2010

- AAEON awarded the 18th Taiwan Symbol of Excellence Award
- AAEON awarded the 2009 Growth in Intel® Atom™ Co-selling Award

2008

- AAEON receives Intel® Marketing Development Funds Award of Excellence
- AAEON awarded the 8th Industrial Sustainable Excellence Award
- AAEON awarded the 16th Taiwan Symbol of Excellence Award
- AAEON awarded the INFO TECH 100 TAIWAN Award

2006

- AAEON awarded the 14th Taiwan Symbol of Excellence Award

2004

- AAEON Technology (Su Zhou) factory attains 3C and ISO-9001 certification
- AAEON sets up Singapore office

2002

- AAEON attains TL9000-H certification
- AAEON becomes a member of Intel® ACPP Program

2000

- AAEON acquires Astech Technology Inc. now called the Panel PC Division

1998

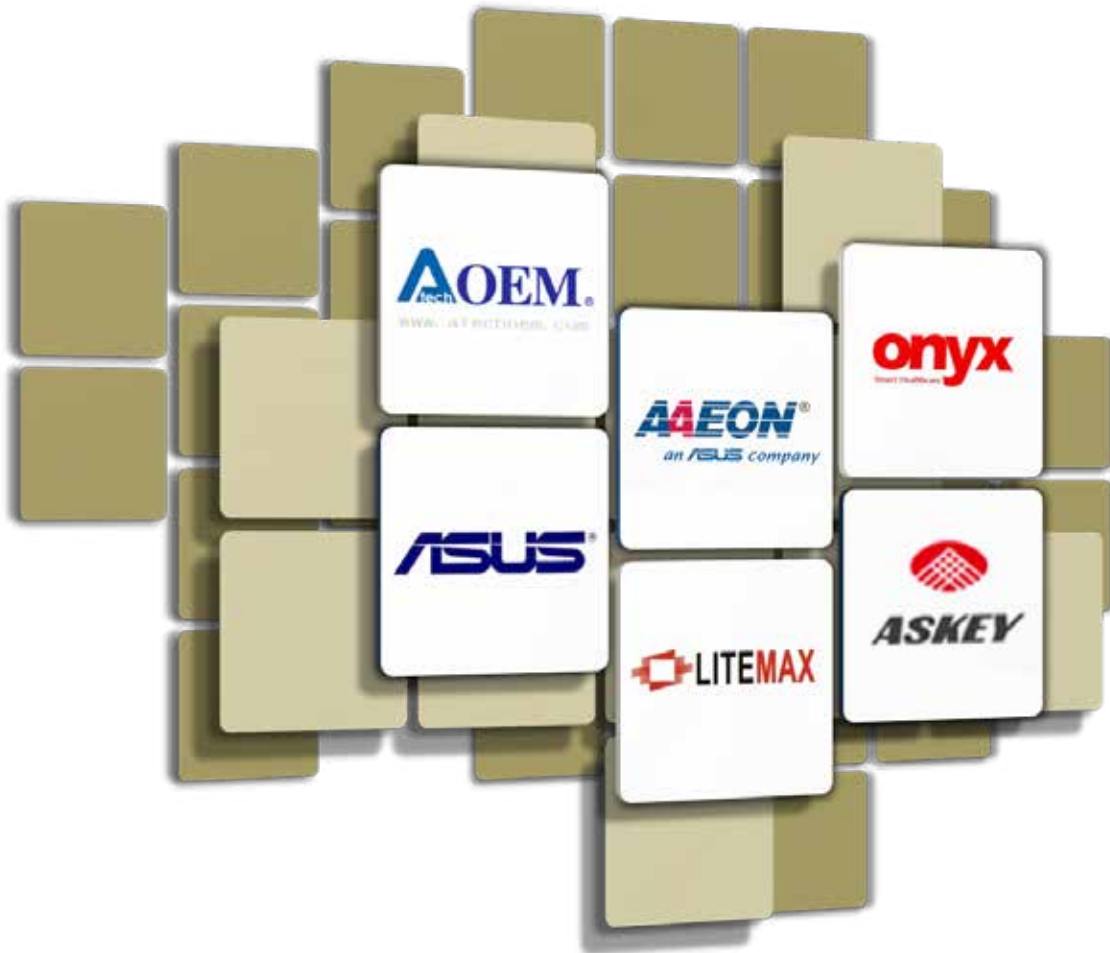
- AAEON establishes Sales Offices in Europe and China

# Operation Strength

A member of the ASUS Group -a strong High-Tech conglomerate

**ASUS Technology and Financing**

**AAEON Design Flexibility and Domain Know-how**



## OEM/ ODM Capability

OEM/ODM service has been a key factor in AAEON's phenomenal growth over the past 10 years. AAEON offers design services for full custom requirements as well as modification services from its off-the-shelf products. From depopulation of unused features for a cost down effort to specific component selection, flexible TKS Solution and DTD Service, AAEON has the experience and expertise to help you create or modify products that perfectly fit your requirements.

## Product Innovation

AAEON's integration expertise has resulted in product designs that have the most desirable built-in features, saving customers valuable design and customization time. AAEON's OEM/ODM capabilities help customers meet exact specifications and requirements. AAEON has invested aggressively in R&D capabilities and will continue to do so to maintain a leading edge advantage for new designs. In cooperation with premier technology vendors, AAEON participates in vendor early access programs to provide the latest technology to its customers.

## Market Focus

AAEON has established a worldwide reputation for exceptional domain know-how. This expertise enabled AAEON to secure a solid position in Machine and Factory Automation, as well as the Chemical industry. Additionally, AAEON's cutting edge products meet the specific needs in the Digital Signage, Transportation, Industrial Automation, Medical, Harbor/Marine, Military/Government and Energy fields.

## R&D Strength

AAEON takes great pride in its World Class Research and Development aptitudes. With more than 20% of AAEON employees in R&D and 10% of annual sales revenue invested in research, AAEON is prepared to handle the most demanding designs based on the latest technologies. The innovative nature of this experienced staff has allowed AAEON to receive many design patents worldwide.

## Design Capability

From our origins with the core competence of single board computer design, AAEON has expanded its capabilities to award winning Panel PC System Design, BIOS Engineering with multi-vendor expertise, Mechanical Design, Peripheral Device Design, Design Verification and in-house EMI/EMC Debugging.

## Manufacturing Capability

AAEON has manufacturing facilities located in Taipei, Taiwan and Su Zhou, China. To become the leading supplier of Industrial Computers, AAEON has created manufacturing facilities with flexible layout and expansion capabilities to easily address the demand for increased production capacity. Drawing upon the skills of its professional and experienced personnel to develop an efficient production system, AAEON has the ability to respond rapidly to customer requests for standard or customized IPC products.



# Quality Assurance

AAEON's Quality Assurance Closed Loop Feedback System provides solid and consistent feedback through the design, manufacturing and service stages to ensure continuous progress and quality improvement to meet customer expectations. These stages are: Design Quality Assurance (DQA), Manufacturing Quality Assurance (MQA) and Service Quality Assurance (SQA).

## DQA

Design Quality Assurance starts at the conceptual stage of a project and covers the product development stage to ensure quality is designed in by highly qualified engineers. AAEON's safety and environmental test labs ensure our products meet the requirements of CE/UL/FCC/CCC standards. All AAEON products go through an extensive and comprehensive test plan for compatibility, function, performance and usability. Therefore, AAEON customers can always expect to receive well-designed, high quality products.

## MQA

Manufacturing Quality Assurance is carried out in accordance with ISO-9001, ISO13485, ISO-14001 & ESD S20.20 certification standards. All AAEON products are built using production and quality testing equipment in a static-free environment. Additionally, these products have gone through rigorous tests in the production line and dynamic aging in the burn-in room. AAEON's Total Quality Control (TQC) program includes: Incoming Quality Control (IQC), In-Process Quality Control (IPQC) and Final Quality Control (FQC). Periodic training, auditing and facility calibration are strictly implemented to ensure all quality standards are followed to meet customers' requirements. The Quality Control Team constantly feeds related issues to R&D for improving product performance and compatibility.

## SQA

Service Quality Assurance includes technical support and repair service. These are important windows to serve AAEON's customer needs, receive their feedback and work with R&D and Manufacturing to strengthen AAEON's response time in resolving customer concerns and improving service levels.

## Technical Support

The backbone of customer support is a team of professional Application Engineers who provide customers with real-time technical support. Their expertise is shared through internal knowledge management and links to the web site for online nonstop service and solutions.

## Repair Service

With an efficient eRMA system and RMA service policy, AAEON's RMA Team is able to ensure prompt, high quality product repair and replacement services with short turnaround time.



## Quality Certification

AAEON has acquired many official certifications to maintain its quality system.

ISO 9001:	QMS Standards, 2008
ISO 13485:	QMS Standards, 2003
ISO 14001:	EMS Standards, 2004
ESD:	ANSI/ESD S20.20, 2007
3C:	China Compulsory Certification
CE/FCC:	All AAEON products undergo and meet CE and FCC test standards which prove their design quality and integrity

## Industrial Automation



### BOXER-Series, Fanless Embedded Controller Box Computers

- Fanless Design for Intel® Processors
- IP66, -40°C ~ 75°C, CAN, FeRAM, PoE
- PCI Expansion Slots



### Panel PC Series

- Multiple Size 7" ~ 17"
- IP65, -20°C~60°C, OVP, LVP, RVP, SVP
- Support Intel® Processors

## Rugged Tablets



### RTC-600

- RISC-based 7" Rugged Tablet
  - Android™ v3.2/v4.0
  - Sunlight Readable (Optional)
  - Rich Wireless Offerings
- Extremely Light-Weight, Handheld



### RTC-700

- RISC-based 7" Rugged Tablet
- Android™ v3.2/v4.0
- Sunlight Readable (Optional)
- Rich Wireless Offerings
- Extremely Light-Weight, Handheld



### RTC-700C

- Intel® Atom™ 7" Rugged Tablet
- Windows® Embedded 8
- Rich Wireless Offerings
- Extremely Light-Weight, Handheld



### RTC-900R

- RISC-based 10.1" Rugged Tablet
- Android™ v3.2/ v4.0
- Sunlight Readable (Optional)
- Rich Wireless Offerings

### RTC-900B

- Intel® Atom™ 10.1" Rugged Tablet
- Windows® 8 [www.aaeon.com](http://www.aaeon.com)
- Rich Wireless Offerings

# Applications

## Network Security



### FWS-8500

(Secure Headquarters/ ISP Backbone Network)

- 2U Rackmount High Performance Network Appliance, Up to 64 Gigabit Ethernet Ports
- Internal 3.5" SATA HDD x 1 or 2.5" SATA HDD x 2, CF Socket x 1
- RJ-45 console x 1, Internal COM Header x 1, USB2.0 x 2, Mini-PCIe x 1, PCI-E[x8] x 2 (Optional)



### FWS-7810

(Enhance Throughput for Enterprise)

- 1U Rackmount 8 LAN Ports Network Appliance with LGA1150 4th Gen Core™/ Xeon Processor
- Internal 3.5" SATA HDD x 1 or 2.5" SATA HDD x 2
- RJ-45 for Console x 1, USB3.0 x 2



### FWS-2350

(Flexible and Powerful Network for SMB & SOHO)

- Desktop 4 LAN Ports Network Appliance with Intel® Atom™ C2000 Series Processor
- CompactFlash™ Socket x 1
- Gigabit Ethernet x 4, USB2.0 x 2, Mini-Card Socket x 1

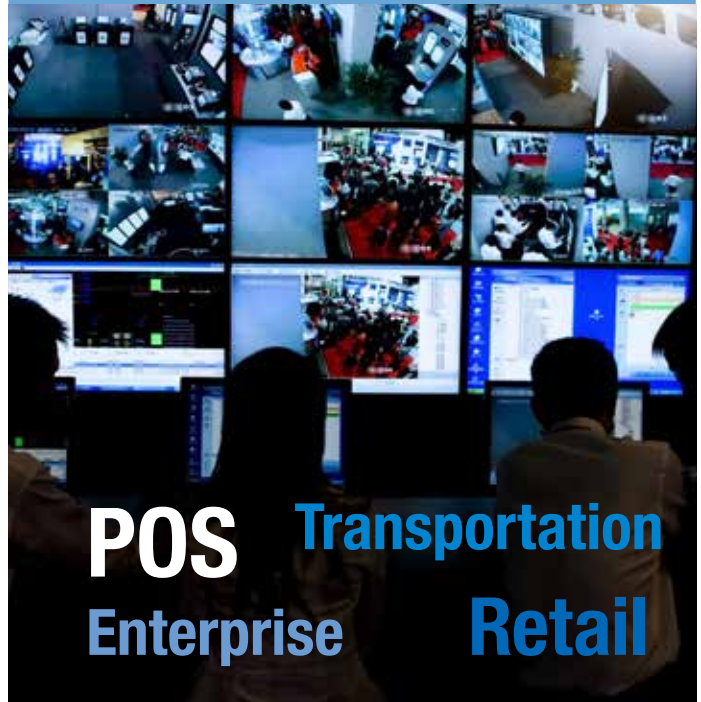


### FWS-2250

(Compact & Fanless End-point Security Kit)

- Desktop 4 LAN Ports Network Appliance with Intel® Atom™ E3800 Series Processor
- CompactFlash™ Socket x 1
- Gigabit Ethernet x 4, USB2.0 x 2, USB3.0 x 1, Mini-Card Socket x 1

## Video Surveillance



### NVR-6300S

- 4U Rackmount Networking Video Recorder with Intel® Core™ i7/i5/i3 Socket Processors
- 3.5" SATA HDD Hot Swappable Tray x 12 + 2.5" SATA HDD Hot Swappable Tray x 1, Slim DVD x 1
- USB x 12, Gigabit Ethernet x 2, Supports PoE Function



### NVR-Q67S

- 2U Rackmount Networking Video Recorder System with Intel® Core™ i3/i5/i7 Processor
- 3.5" SATA HDD Hot Swappable Tray x 8
- USB2.0 x 6, Gigabit Ethernet x 2



### NVR-CV

- Mini Tower Platform with Intel® Atom™ D2550 Processor
- Hot Swappable HDD Bay x 4
- USB2.0 x 6, Gigabit Ethernet x 2, COM x 2



### NVR-B75

- Retail Appliance NVR System with Intel® Core™ i3/i5/i7 Processor
- Hot Swappable SATA HDD Tray x 5, Internal 3.5" SATA HDD x 1
- USB2.0 x 2, USB3.0 x 4, Gigabit Ethernet x 2



## Transportation



EN-50155



### Railway Boxer (AEV-6356/6357HDD)

- EN50155 TX Compliant
- Intel® Core™ i7
- M12 for USB, LAN, RS-232
- Isolation 500V DC for Power
- Wide Operating Temperature: -40°C ~ 70°C
- Lockable HDD Kit



### In-vehicle Boxer (BOXER-6301VS)

- eMark
- Rich I/O and Storage Devices Support, SSD
- Supports GPS Inside
- Power On Ignition/ Off Delay Control

## Digital Signage



### DSS-TN40

- AMD Embedded R-Series APU
- HDMI x 4 Supporting Full HD Display
- USB3.0 x 4 (Front Panel);  
USB2.0 x 2 (Rear I/O)
- Min-iPCle x 1 with SIM Socket

# Applications

## Food Processing



### AEC-6511

- Stainless Steel 316L Enclosure
- IP67 and NEMA4x Compliant
- Waterproof M12 Connectors



### AFP-6152

- 15" XGA (1024 x 768) TFT LCD Display
- Intel® Atom™ D525 Processor, Fanless Operation
- IP66/NEMA4x-Compliant Stainless Type 316L System
- Wide Operating Temperature : -20°C ~ 50°C
- Power Protection: OVP, LVP, RVP, SVP



### AFP-6123

- 12.1" XGA (1024 x 768) TFT LCD Display
- Intel® Atom™ D2550 Processor, Fanless Operation
- IP66/NEMA4x-Compliant Stainless Type 316L System
- Wide Operating Temperature : -20°C ~ 50°C
- Power Protection: OVP, LVP, RVP, SVP

## Infotainment



### Panel PC (ACP-5000)

- Fanless Design for Intel® Core™ i7
- 2 Finger Multi-Touch
- Anti-scratch P-CAP Touch Screen
- IP65 Front Bezel IPx1 Back Chassis



### Display Monitor (ACD-500D)

- Full Flat Design
- 2 Finger Multi-touch
- DVI or VGA Input
- USB for KB, Mouse, Storage, MSR



### BOXER (AEC-6403)

- Intel® N2807 Processor
- HDMI Output
- Slim Design: 20mm

## Introduction

AAEON's new line of Rugged Tablet Computers (RTC) is MIL-STD-810G compliant and meets IP65 rating. The RTC Series is built from the ground up to withstand water, dust, vibration and shock, as well as the extreme temperatures found in a variety of harsh conditions. The RTC product line will go wherever the job takes you. Encased in tough magnesium alloy, the RTC series offers secure and reliable mobile computing whether it is vehicle mounted or hand carried into the field.

The rugged mobile computing market continues to grow as we find new ways to improve performance and productivity by enabling connectivity in the workforce. The RTC series offers up to the minute information and infield data acquisition, which makes mobile computing not just a valuable asset, but a critical requirement. Powered by low-power processors, such as Intel®, NVIDIA® and TI™, the RTC line delivers high performance with low power consumption. Battery life is in the range of 5~7 hours and meets the demands of a full-day work in the field. Docking station options and vehicle chargers will keep the system up and running for multiple shift operations. These ergonomic and conveniently sized tablets are light-weight and will go with you anywhere to tackle the job on hand.

The resistive touch screen and Advanced Optibond Technology (AOT™) allows easy and accurate data input. The numeric keypad and programmable function keys are all standard features that make AAEON's RTC product line your best choice for mobile computing.

## RTC-600A



### 5.7" Rugged Tablet Computer

- OMAP 4470 up to 1.5 GHz Processor
- 5.7" Display with 1280 x 720 Resolution
- Hotswappable Lithium-Polymer high capacity battery, support up to 6-8hrs
  - External Battery: 7.4V 1530mAh
  - Internal Battery: 7.4V 1530mAh
- WLAN a/b/g/n, Bluetooth® T3.0 EDR, WWAN
- G-Sensor, Light Sensor, E-compass
- Android™ v4.2
- 420 nits

## RTC-700A



### 7" Rugged Tablet Computer

- NVIDIA® TEGRA™ 2 1.0 GHz Dual Core Processor
- 7" WXGA (1280 x 800) TFT LCD Display
- Li-Polymer High-Capacity Battery, 6 Hours Battery Life
- WLAN 802.11 b/g/n , Bluetooth® 2.1+ EDR
- G-Sensor, Light Sensor, E-compass, GPS Navigation
- Android™ v3.2/v4.0
- 400 nits; 680 nits (optional)

## RTC-700T



### 7" Rugged Tablet Computer

- Intel® Atom™ Z670 Processor
- Intel® SM35 Express Chipset
- 7" WVGA (1024 x 600) TFT LCD Display
- Li-Polymer High-Capacity Battery, 4~6 Hours Battery Life
- WLAN 802.11 b/g/n , Bluetooth® 2.1 + EDR
- G-Sensor, GPS Navigation
- Windows® 7, WES 7
- 400 nits

## RTC-700C



### 7" Rugged Tablet Computer

- Intel® Atom™ Z2760 1.8GHz Dual Core Process
- 7" (1280 x 800) TFT LCD Display
- Sunlight Readable (Optional)
- Li-Polymer High-Capacity Battery, 10 Hours Battery Life
- WLAN 802.11 b/g/n, Bluetooth® 4.0
- NFC, 3G/LTE (Optional)
- G-sensor, E-compass, Gyros, Vibrator Sensor, GPS/Glonass Navigation
- Windows® Embedded 8 Standard

## RTC-900R



### 10.1" Rugged Tablet Computer

- NVIDIA® TEGRA™ 2 1.0 GHz Dual Core Processor
- 10.1" WXGA (1280 x 800) TFT LCD Display
- Li-Polymer High-Capacity Battery, 12 Hours Battery Life
- WLAN 802.11 b/g/n , Bluetooth® 2.1 + EDR
- G-Sensor, Light Sensor, E-compass, GPS Navigation
- Android™ v4.0

## RTC-900B



### 10.1" Rugged Tablet Computer

- Intel® Atom™ E3800 Series Processor
- 10.1" WXGA (1280 x 800) TFT LCD Display
- Li-Polymer High-Capacity Battery, 8 Hours Battery Life
- WLAN 802.11 b/g/n, Bluetooth® 2.1 + EDR
- G-Sensor, Light Sensor, GPS Navigation
- Windows® 8
- 900 nits

## RTC-1000i



### 10.2" Rugged Tablet Computer

- Intel® Core™ i7-620UE 1.06GHz Processor
- 10.2" (1024 x 600) TFT LCD Display
- Sunlight Readable (Optional)
- 9-Cell Smart Li-Ion High-Capacity Battery, 5-Hour Battery Life
- WiFi 802.11 b/g + Bluetooth® 2.0
- 200/300 nits

# Rugged Tablet Computer

## Fully-Rugged Design

### Water Proof



- IEC 60529
- IP-x5 standard

### Drop Test



- MIL-STD 810G Method 516.6 Procedure IV

### Dust Proof



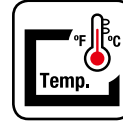
- IEC 60529
- IP-6x standard

### Vibration Test



- MIL-STD 810G 514.6 Procedure I Cat. 24, Fig. 514.6E-1 & 514.6E-2
- ASTM 4169-99 Truck Assurance Level II, Schedule E

### Temperature Test



- MIL-STD 810G Method 501.5 Procedure I & II, Method 502.5 Procedure I & II, Method 503.5 Procedure I, Method 507.5 Procedure II

## Built-in Versatile Sensors

### GPS



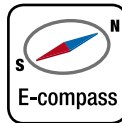
- BGA GPS single chip solution

### G Sensor



- Gravity sensor

### E-compass



- Electronic compass

### Gyro Sensor



- Electronic gyroscopes

## Outdoor Display Enhancement

### AOT™ (Advanced Optibond Technology)



- The best reflection reduction of any commercially available technology
- Reinforces the LCD display, making it much more rugged



Without AOT™ With AOT™

### Sunlight Readable LCD Ambient Light



- Readable content under sunlight
- Higher brightness solution
- AOT optical bonding



- Power saving in dark environments
- Detect light and brightness

## Electric Input Device in Cloud...



The AAEON Hi-Safe is a free and powerful program geared toward SDKs for UIs running Microsoft® Windows® Operating systems. It provides an easy way to develop the end user's own UI software to monitor vital System information such as those for the processor, RAM and VGA. It monitors received data from the Super I/O, fan, temperature and voltage, offers configuration options for Digital I/O pin direction and data patterns, provides watchdog timer and fan speed settings, SMBus base address detection and device ID settings. It also offers two modes for backlight display control if one uses the LVDS interface. Based on the user interface SDK, no coding is needed and customers can create their own customized user interface by using the function codes provided by AAEON.



## Hi-Safe Advantages

- ▶ **Faster time-to-market**
- ▶ **Easy to use**



### System Information:

Receives CPU, VGA and RAM information



### Smart Fan:

Receives fan and temperature data; sets the fan speed into the smart fan mode



### Hardware Monitor:

Receives super I/O, fan, temperature and voltage data



### SM Bus:

Read and write SMbus device, and it detects SMbus base address automatically



### DIO:

Obtain DIO information: set the pin direction and pin data



### Backlight Controller:

Controls the backlight display; two modes



### Watchdog:

Set the system reboot timer

# AAEON Hi-Manager

The AAEON Hi-Manager is a tool based on the Intel® Active Management Technology 9.0 (iAMT 9.0) and has backward compatibility with earlier versions of iAMT. This allows users to locate all iAMT devices within the intranet, power On/Off target devices remotely, set power On/Off scheduling, arrange device groupings for better management, offer event logs and timer settings to wake up devices at specified times, recover systems that have crashed from virtual CD-ROM, remote KVM management and access to target device hardware information for asset management. Hi-Manager can be installed on all AAEON platforms and can remotely manage AAEON client devices that use Intel® Q77, Q87, QM77, QM87 chipsets and run Microsoft® Windows® XP, Window® 7 Operating Systems.

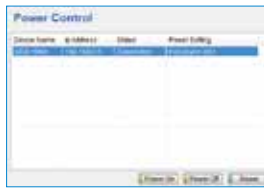


## Hi-Manager Advantages

- ▶ Easy to use and build custom applications
- ▶ Supports AAEON products with iAMT
- ▶ In-depth technical support



**Network Discovery:**  
AMT device discovery



**Power Control:**  
Powers on/off the target device



**Group Management:**  
Arrange devices in this function



**Event Log:**  
Logs boot records of the selected device



**Alarm Clock:**  
Sets timer to wake up a sleeping device



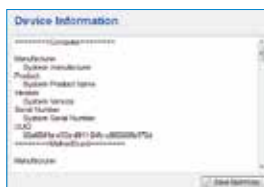
**Remote Recovery:**  
Mounts boot image or physical CD-Rom to target device



**KVM:**  
Controls remotely from the target device



**Schedule:**  
Schedules the power on/off target devices



**Device Information:**  
Shows target device assets

## Intel® Active Management Technology Features

Intel® Chipset	QM67/ Q77/ QM77/ HM76/ B75A/ Q87/ QM87
Intel® AMT Version	AMT 7.0/8.0/9.0
HW Inventory	✓
SW Inventory	✓
Power State Management	✓
System Defense	✓
Remote Configuration	✓
Remote Boot Option	✓
KVM Redirection	✓
KVM Remote Control	✓
ME Wake on LAN	✓
Proactive Security Block, HW-Based and Remote Management Recovery	✓
Host-Based Provisioning	✓
Enhanced System Defense Filters	✓

# Design Manufacturing Service

Design Manufacturing Service (DMS) offers exceptional end-to-end services from product conceptualization, product development to manufacturing and service programs. All services are linked together through a comprehensive process and closely monitored by dedicated professionals to guarantee the highest level in product quality, reliability and durability.

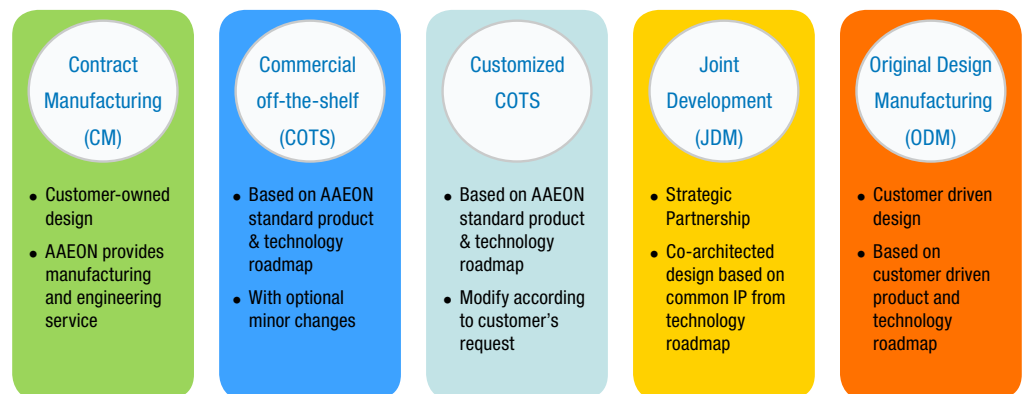
- Product Conceptualization
  - Electronic Circuit Development
  - PCB Layout
  - Component Qualification
  - Mechanical Design
  - Prototype building
  - Compatibility, Reliability and Qualification testing
  - Certification and processing (Agency Approvals)
  - Manufacturing Design
  - Packaging and Enclosure Design
- 
- Customer Service Management
  - Customer and Channel Repair
  - Logistics extension
  - Refurbishment
  - Return Processing
  - Troubleshooting Support
  - Upgrades
  - Warranty Management
  - Spare Parts Management
- PCBA Assembly
  - System Manufacturing
  - Component and Subsystem Assembly
  - Functional Testing
  - Engineering Change Management
  - BTO (Build to Order)
  - Supplier Qualification
  - Warehousing
  - Failure Analysis

## Collaboration Models

Customers can consign to AAEON the manufacturing of their existing products, customize existing AAEON COTS products, or joint develop new products with the expertise of a dedicated project team that oversees the project from product conceptualization to on-time delivery of the goods. AAEON DMS handles Large-volume as well as Low-Volume-High-Mix projects, satisfying the need of our customers for every kind of computing platform requirements.

## Areas of Expertise

- Retail
- Transportation
- Energy
- Automation
- Medical and Healthcare
- Networking



Quality Manufacturing

Collaborative Development

# System Product Lines



## Industrial HMI Touch Panel PC (AHP-1000 Series)

AAEON's AHP-1000 Series is geared toward HMI use and features a slim, fanless design, an IP-65 certified plastic front panel and low power consumption CPU. The AHP-1000 series offer products sizes range from 7" to 15" cost-effective HMI solutions for machinery, factory monitoring stations and building automation applications, to name a few..



## Rugged & Fanless Touch Panel PC (AHP-2000 Series)

AAEON's AHP-2000 Series is designed for harsh environments such as the steel factory, oil pipe monitoring and DIN monitoring applications. Equipped with the Intel® Dual Core™ Atom™ D510 CPU and offering a fanless cooling system, the AHP-2000 Series also features wide operating temperature ranges from -20°C to 55°C and power input protection for over-voltage, low-voltage and reverse-input.



## Ultra-slim Multi-Touch Panel PC (ACP-1000 Series)

AAEON, the 1st announce Ultra-Slim fanless P-CAP multi-touch panel computer with slim size 30mm named ACP-1000 series. Ultra slim mechanism design and AAEON superior thermal solution which fulfill customers need in their space limitation applications. System also provides panel mount and VESA mount which make customers easily installed everywhere.



## Infotainment Multi-Touch Panel PC (ACP-5000 Series)

AAEON's ACP-5000 Series is ideal for public infotainment and digital signage applications and it is equipped with an Intel® Dual Core™ Atom™ D510 CPU and a multi-touch projected capacitive touch screen. To increase durability and reliability, the ACP-5000 also offers special designs such as the IPX1 back chassis to avoid water damage and anti-scratch T/S (hardness 7H) to prevent scars from sharp objects or keys. The overall layout has a "non-gap" design for easy-cleaning and provides a user-friendly multi-touch interface allowing users to easily zoom in/out of their applications.



## Rugged Stainless Steel Panel PC (AFP-6000 Series)

AAEON's AFP-6000 Series touch panel PC is meticulously designed with an IP66/NEMA 4X rated enclosure made with the highest grade polished Stainless Steel Type 316L, providing an easy to clean and hygienic human machine interface (HMI) for food and beverage industries. Powered by the power efficient Intel® Atom™ processor, the AFP-6000 Series brings you high system performance for automation applications in harsh environments against splatter, high humidity and corrosion.



## Infotainment Cloud/ Remote Display (ACD-5000 Series)

AAEON's ACD-5000 Series is a top industrial-grade Cloud technology display that supports both remote and cloud displays. For remote display function, users can install the display anywhere and connect to the host PC via local area network. For Cloud display function, one host PC can support up to four displays. Each user works with each display to get any resource from the host PC by a USB device, keyboard and mouse. The display connects to the host PC by a 100 meter LAN cable. The ACD-5000 is one of the most innovative Cloud solutions available and is ideal for digital signage, infotainment, POS and KIOSK applications.





## Rugged Tablet Computer (RTC Series)

AAEON's new line of Rugged Tablet Computers (RTC) is MIL-STD-810G compliant and meets IP65 rating. The RTC Series is built from the ground up to withstand water, dust, vibration and shock, as well as the extreme temperatures found in a variety of harsh conditions. The RTC product line will go wherever the job takes you. Encased in tough magnesium alloy, the RTC series offers secure and reliable mobile computing whether it is vehicle mounted or hand carried into the field.



## Fanless Embedded Controller Platform (BOXER Series)

The BOXER Series provides a full line of various embedded controllers of all sizes to help your project succeed in the field of transportation, entertainment, environmental and industrial facility monitoring, building automation and other relevant IPC areas.



## Turn-Key Solution (TKS Series)

Turn-Key Solutions provide one-stop shopping service to minimize customer's effort in sourcing components, designing chassis, integrating chassis with CPU boards, etc... Customers simply provide their requirements and AAEON can satisfy the needs through their Turn-Key Solution Service offerings.



## Digital Signage

AAEON provides Flexible Embedded System Controller products that can operate as multiple or independent digital display players in the field. These products are all-in-one systems designed for low power consumption and fanless operation, while supporting high-end graphics performance, up to full HD (1080P).



## Network Appliance

AAEON provides high performance Network Appliance Solutions that are suitable for Unified Threat Management (UTM), Virtual Private Network (VPN), Intrusion Detection System (IDS), Intrusion Prevention System (IPS), Content Management (CM), Firewall System, and etc..



## Industrial Chassis

AAEON's Industrial Chassis series provide a budget-saving IPC solution with fully-tested embedded boards. Both the rack and wallmount IPC chassis are suitable for Power, Telecom, Utility, Factory Floor, Machinery, Education, Server, Traffic, Environmental and Facility Monitorings Applications.

# System Product Lines