

Specification & Application Data

**POWERFORCE® - A Premium Brand For Power and Drive Remanufactured Detroit Diesel 2-Cycle Engines for On & Off Highway Applications:**

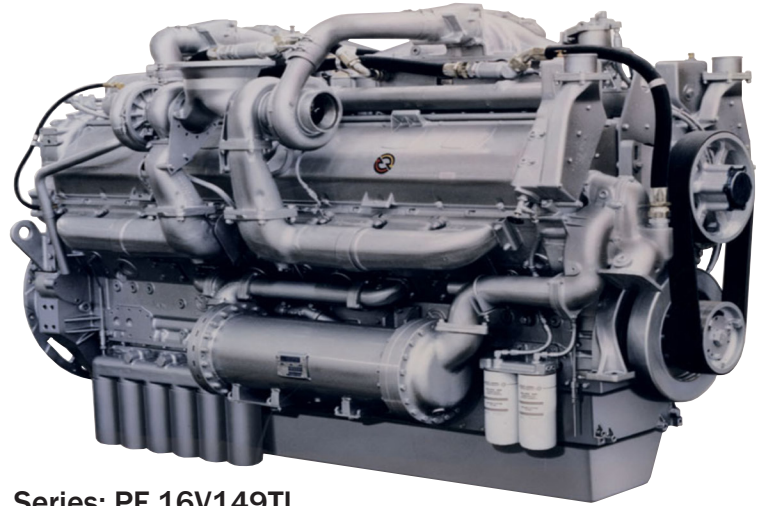
POWERFORCE® Detroit Diesel 2-Cycle Engines are completely remanufactured to ensure quality and performance. All parts used are genuine, or to original OEM specification.

Each engine is remanufactured in a purpose built facility, with remanufacturing resources supported by more than 60-years of experience and knowledge in remanufacturing Detroit Diesel 2-Cycle engines. POWERFORCE® is one, of only a few, sources for fully remanufactured Detroit Diesel 2-Cycle engines.

Central Power Systems & Services is renowned for in-house training on 2-cycle technology. The POWERFORCE® team has a multi-step program to ensure engines are remanufactured to original OEM specification. All engines are dynamometer tested.

The POWERFORCE® team has extensive Detroit Diesel 2-Cycle application experience to assist you.

POWERFORCE® has a fair no hassle exchange program for engine cores.



Series: PF 16V149TI

Photo depicts an engine model from this series but may not include certain options

Rated Gross BHP	85°F (29.4°C)	60°F (15.6°C)	RPM
Rated Gross BHP (kW)	1600 (1194)	N.A.	1900
Continuous BHP(kW)	N.A.		N.A.
Engine Torque lb ft (NM)	4595 (6230)		1600

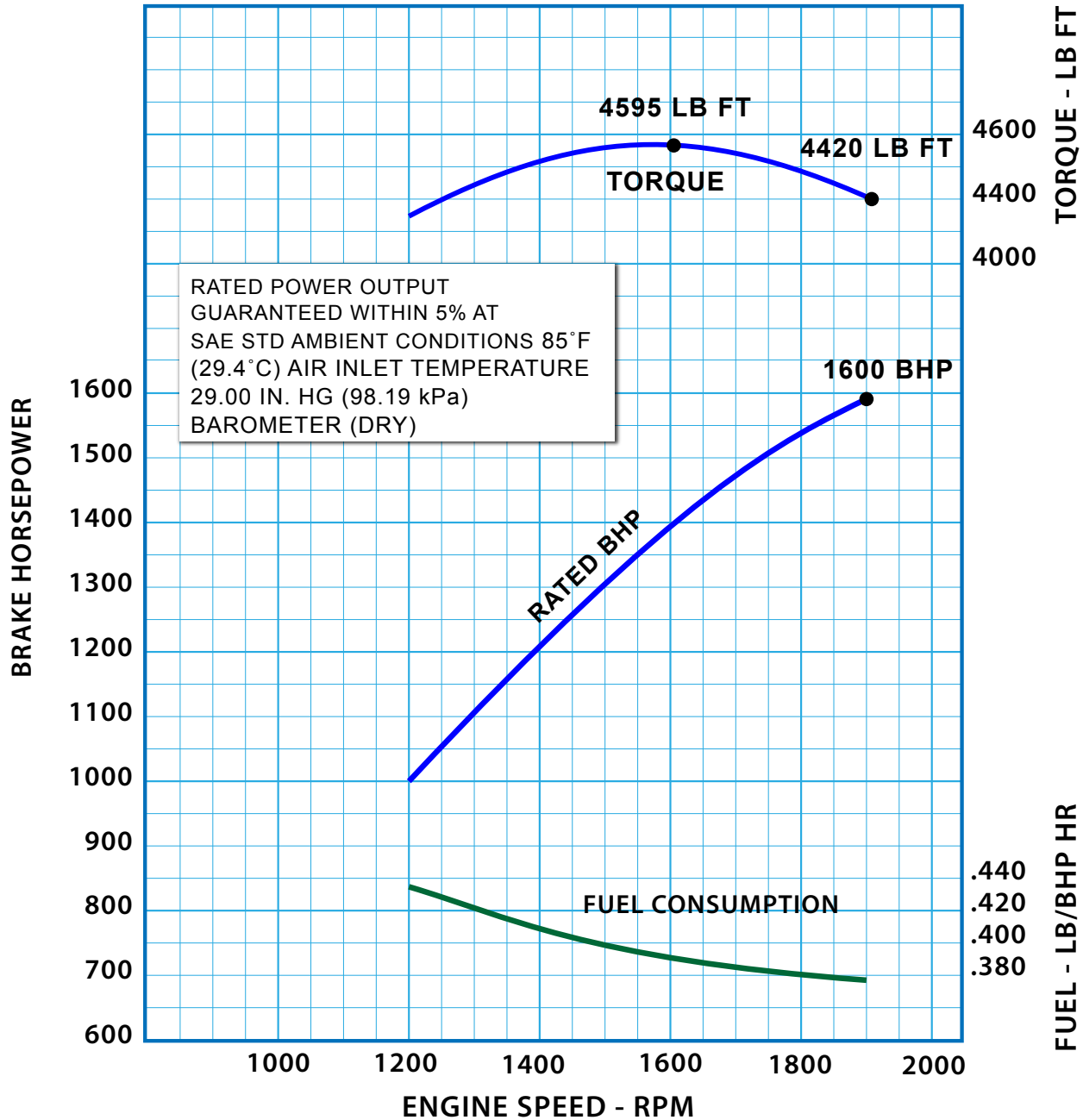
**Rating Data of 2-Cycle Detroit Diesels:**

**Rated Gross HP** - Engine gross BHP ratings are given for inlet temperatures of 85°F (29.4°C) and 60°F (15.6°C). All ratings and RPMs, including continuous BHP ratings, are as detailed on the chart to the left.

Engine Specifications			
Original Manufacturer & Model		Detroit Diesel 16V-149TI	
Remanufacturer		POWERFORCE®	
Number of cylinders		16	
Arrangement		V	
Aspiration		Turbo-charged	
Displacement CID. (Liters)		2389 cu. ins. (39.18 L)	
Bore x Stroke inches (mm)		5.75" X 5.75" (146mm X 146mm)	
Injectors		180	
Compression Ratio		16 : 1	
Combustion Cycle		2-Cycle Detroit Diesel	
History of Engine Series			
Introduction		1967	
In-line engines now available		N.A.	
V engines now available		8, 12, 16 and 20 cylinder	
Typical applications for Engine			
Mining		Industrial	
Power Generation		Construction	
Oil & Gas			
Marine			
Dimensions - inches (mm)			
Length	Width	Height	Weight lbs (kg)
104" (2642)	64" (1626)	66" (1676)	10,860lbs (4926)

Information Required On Ordering	
Engine Serial #	Required to Determine Model Number and spec build
Detroit Engine Model	Original Engine Configuration
Has engine been changed out	To ensure correct engine build
Application	The equipment it's in or what it powers
Standard Accessories	
Pulleys	Where Applicable
Lifting Eyes	Lifting Eye Located on Head
Oil Filter	Supplied on Engine where applicable
Optional equipment available	
Electric Start	24 volt Starter Motor
Engine Mounted Battery Charging	Alternator and alternator drives
Fuel Filtration	Complete Fuel Filter System
Air Cleaner	Replaceable Element or Assembly
Protection	Engine Shut Down Systems
Drive	Flywheel and/or Flex Plates
Cooling Accessories	Fan Hub and Fan Drive Assemblies
Air Compressor	Compressor and Compressor Drive
Paint	Custom Paint Available
Customer Engine Core	Can Reman Core with Accessories
Engine Heaters	When Applicable

## BASIC ENGINE PERFORMANCE MODEL: PF 16V149TI WITH 180 INJECTORS



**POWERFORCE® Remanufactured 2 - Cycle Detroit Diesels Engines comply with applicable codes and standards**

All data subject to change without notice. The information in this white-page specification is believed to be accurate but all recommendations are made without warranty, since the conditions of use are beyond Central Power Systems & Services control. Central Power Systems & Services disclaims any liability in connection with the use of this information, and does not warrant against infringement by reason of the use of any of its products in combination with other material or in any process. Central Power Systems & Services warrants only that the product complies with specifications agreed to in contracts of sale. Central Power Systems & Services reserves the right to change any of the technical information and data detailed in this paper.

To accurately provide PowerForce Engines and to avoid any potential charge-backs on cores or for returned product, it is imperative that all information supplied is correct and that the engine in the equipment is like for like. If the engine has ever been changed out, it should be reviewed for potential changes.



[www.powerforce.com](http://www.powerforce.com)

POWERFORCE® - A Premium Brand For Power and Drive  
© 2013 POWERFORCE® a registered brand of Central Power Systems & Services. All rights reserved.  
Specifications are subject to change without notice.