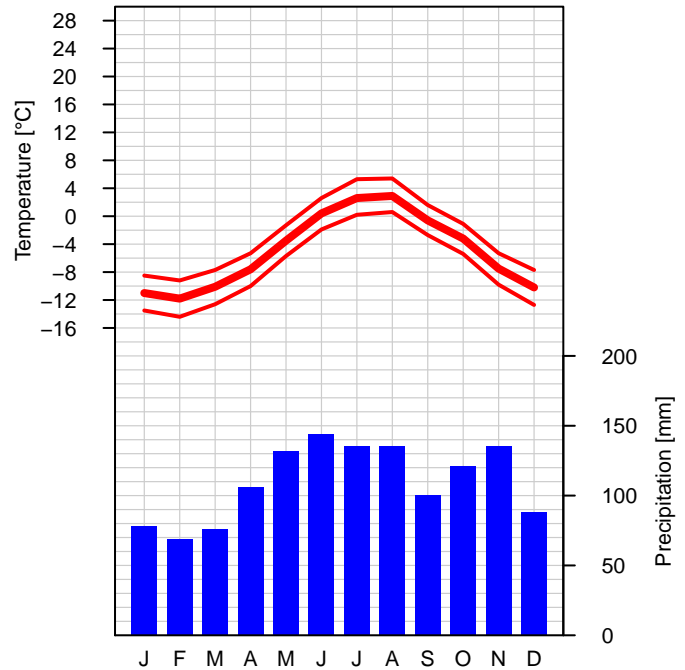
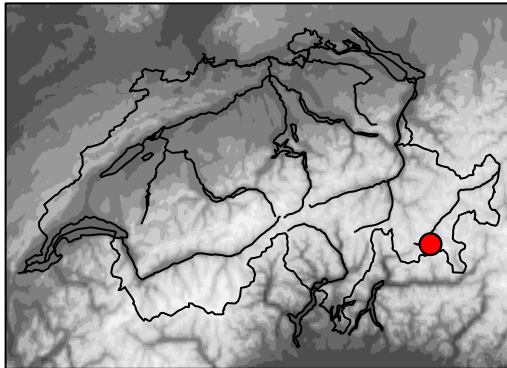




Climate normals Piz Corvatsch

Reference period 1991–2020

Altitude a.s.l.: 3294 m
Geogr. coord.: 46.42 N / 9.82 E
Swiss coord.: 2'783'156 / 1'143'524
Climate region: Engadine



	Jan	Feb	Mar	Apr	May	Jun	Jul	Aug	Sep	Oct	Nov	Dec	Year
Temperature [°C]	-11.0	-11.8	-10.1	-7.6	-3.5	0.4	2.6	2.9	-0.6	-3.2	-7.5	-10.2	-5.0
Maximum temp [°C]	-8.5	-9.2	-7.7	-5.3	-1.3	2.6	5.3	5.4	1.6	-1.1	-5.3	-7.7	-2.6
Minimum temp [°C]	-13.5	-14.4	-12.6	-10.0	-5.7	-1.9	0.2	0.6	-2.7	-5.4	-9.8	-12.7	-7.3
Ice days [days]	30.6	27.6	30.6	28.1	20.2	6.9	2.6	2.0	8.9	17.8	27.2	30.4	232.9
Frost days [days]	31.0	28.3	31.0	30.0	29.8	20.2	13.1	11.4	22.1	28.5	29.8	31.0	306.2
Summer days [days]	0.0	0.0	0.0	0.0	0.0	0.0	0.0	0.0	0.0	0.0	0.0	0.0	0.0
Heat days [days]	0.0	0.0	0.0	0.0	0.0	0.0	0.0	0.0	0.0	0.0	0.0	0.0	0.0
Sunshine [h]	141	150	186	174	173	179	200	185	167	165	125	117	1961
Sunshine [%]	56	56	53	45	39	40	44	45	47	53	50	49	47
Bright days [days]	13.1	11.4	11.3	7.9	5.4	4.8	5.4	7.0	8.2	11.8	10.4	10.8	107.5
Cloudy days [days]	8.3	7.4	8.4	10.8	12.2	10.5	8.8	9.5	10.0	9.7	10.3	10.7	116.6
Precipitation sum [mm]	78	69	76	106	132	144	135	135	100	121	135	88	1317
Precipitation 1 mm [days]	9.0	8.3	10.0	11.6	14.1	14.1	13.1	13.0	10.1	10.3	11.2	9.9	134.7
Precipitation 5 mm [days]	4.2	3.9	4.2	5.8	7.6	8.2	7.7	7.4	5.4	5.8	6.1	4.4	70.7
Precipitation 10 mm [days]	2.4	2.0	2.2	3.3	4.4	4.6	4.4	4.8	3.4	3.7	3.7	2.4	41.3
Precipitation 50 mm [days]	0.1	0.1	0.0	0.1	0.1	0.2	0.2	0.2	0.1	0.2	0.3	0.2	1.8
Precipitation 100 mm [days]	0.0	0.0	0.0	0.0	0.0	0.0	0.0	0.0	0.0	0.0	0.0	0.1	0.1



Climate normals Piz Corvatsch

Reference period 1991–2020

	Jan	Feb	Mar	Apr	May	Jun	Jul	Aug	Sep	Oct	Nov	Dec	Year
Precipitation 0%–q [mm]	6	18	9	10	45	53	61	10	23	4	4	5	981
Precipitation 20%–q [mm]	26	31	47	60	89	90	90	103	53	52	46	33	1135
Precipitation 40%–q [mm]	54	54	65	80	117	120	122	120	77	104	90	77	1234
Precipitation 60%–q [mm]	88	69	83	126	136	164	141	143	99	126	114	91	1333
Precipitation 80%–q [mm]	125	104	103	152	167	193	180	164	151	175	210	102	1535
Precipitation 100%–q [mm]	239	174	185	223	233	276	227	224	201	284	439	320	1711
Snowfall [cm]	–	–	–	–	–	–	–	–	–	–	–	–	–
Snowfall [days]	–	–	–	–	–	–	–	–	–	–	–	–	–
Snow cover > 0 cm [days]	–	–	–	–	–	–	–	–	–	–	–	–	–
Snow cover > 1 cm [days]	–	–	–	–	–	–	–	–	–	–	–	–	–
Snow cover > 10 cm [days]	–	–	–	–	–	–	–	–	–	–	–	–	–
Snow cover > 50 cm [days]	–	–	–	–	–	–	–	–	–	–	–	–	–
Relative humidity [%]	63	66	70	77	82	82	80	80	78	70	70	66	74
Vapor pressure [hPa]	1.7	1.7	2.0	2.7	3.9	5.2	6.0	6.0	4.6	3.4	2.5	1.9	3.5
Air pressure station [hPa]	674.0	672.7	673.8	675.0	679.6	683.8	685.7	686.0	683.1	680.4	675.8	674.6	678.7
Air pressure red. 700 [m]	3011	2997	3007	3019	3068	3114	3135	3139	3107	3077	3028	3017	3059
Wind speed [m/s]	6.9	6.7	6.4	5.2	4.6	4.1	3.8	3.7	4.1	5.2	6.2	6.7	5.3
Wind 10 m/s [days]	17.2	13.5	12.3	8.7	6.1	3.7	3.2	3.5	4.7	10.4	14.1	16.3	113.7
Wind 20 m/s [days]	0.2	0.2	0.2	0.0	0.0	0.0	0.0	0.0	0.0	0.1	0.2	0.2	1.1
Wind 30 m/s [days]	0.0	0.0	0.0	0.0	0.0	0.0	0.0	0.0	0.0	0.0	0.0	0.0	0.0
Visibility < 100 m [days]	–	–	–	–	–	–	–	–	–	–	–	–	–
Visibility < 1000 m [days]	–	–	–	–	–	–	–	–	–	–	–	–	–



Climate normals Piz Corvatsch

Reference period 1991–2020

Legend:

Climate graph:	Graph showing long-term means of monthly mean temperature, mean monthly maximum and minimum temperature as well as monthly precipitation sums of a certain measuring site.
Table:	Long-term means of monthly mean values and monthly sums of different climatological parameters. Missing values (no measurements or measuring period too short) are labeled as "-".
<i>Temperature [°C]</i>	monthly mean temperature
<i>Maximum temp [°C]</i>	monthly mean of daily maximum temperature
<i>Minimum temp [°C]</i>	monthly mean of daily minimum temperature
<i>Ice days [days]</i>	number of days with maximum temperature below 0° Celsius
<i>Frost days [days]</i>	number of days with minimum temperature below 0° Celsius
<i>Summer days [days]</i>	number of days with maximum temperature equal to or above 25° Celsius
<i>Heat days [days]</i>	number of days with maximum temperature equal to or above 30° Celsius
<i>Sunshine [h]</i>	measured sunshine duration
<i>Sunshine [%]</i>	ratio of measured sunshine duration to possible sunshine duration
Bright days [days]	number of days with sunshine duration greater than 80%
Cloudy days [days]	number of days with sunshine duration less than 20%
<i>Precipitation sum [mm]</i>	monthly precipitation sum
<i>Precipitation X mm [days]</i>	number of days with precipitation equal to or above X mm
<i>Precipitation X%-q [mm]</i>	X%-quantile of the monthly precipitation sums (0%: lowest value; 40%: 40%/60% of the values are lower/higher than this value; 100%: highest value) Attention: Annual values do not correspond to the sum of the monthly values.
Snowfall [cm]	monthly snowfall sum
Snowfall [days]	number of days with snowfall equal to or above 1 cm
Snow cover > X cm [days]	number of days with snow cover above X cm
Relative humidity [%]	monthly mean of relative humidity
<i>Vapor pressure [hPa]</i>	monthly mean of vapor pressure
<i>Air pressure station [hPa]</i>	monthly mean of air pressure at station level
<i>Air pressure red. 700 [m]</i>	monthly mean of the geopotential height of the 700 hPa level
<i>Wind speed [m/s]</i>	mean monthly wind speed
Wind X m/s [days]	number of days with wind speed (10min mean) equal to or above X m/s
Visibility < X m [days]	number of days with visibility < X m (at least once a day). A visibility below 1000 m is also called fog.

Homogeneous data series were used to calculate long-term means for the parameters shown in italics. The selection of the parameters is based on the guidelines of the World Meteorological Organization (WMO–No. 1203). The values can change due to continuous quality control and homogeneity updates. Further information on the Swiss climate and on the homogenization topic can be found on www.meteoswiss.ch.