



SHAPING TOMORROW

# COMPANY PROFILE





An aerial photograph showing a long, white, arched bridge spanning across a large, clear blue lake. A paved road with yellow lane markings leads from the bottom right towards the bridge. The surrounding landscape is lush with green trees and vegetation. The sky is a clear, bright blue.

# Together We Develop A Better Future

PT Gunung Raja Paksi Tbk



## Table of contents

---

- 4 **Message from**  
President Director
- 6 **About Us**
- 8 **Milestone**
- 10 **Global Market**
- 12 **GRP Products**
- 14 **GRP Services**
- 16 **Facilities**
- 17 **CSR**
- 18 **Sustainable Growth**



## Message from President Director

**“At Gunung Raja Paksi Tbk (GGRP), we always nurture the culture of continues improvement through achievement and advancement in all fields of development.”**



Thanks you for choosing GGRP as your steel solution partner.

As a member of Gunung Steel Group (GSG), PT Gunung Raja Paksi (GRP) has grown as one of leading steel producers in South East Asia. With more than 50 years of experience in the industry, the group has grown from producing a few types of steel products to a wide range of steel-based products, which is in line with our efforts to continuously support the development of the great Nation of Indonesia.

We have always emphasized foremost on professional performances through the indepth experience and accompanied by a comprehensive approach in our efforts to provide the best services and the best possible value-added products. Those efforts, enable GRP to maintain the position as one of the leading companies in the steel industry throughout the years.

At Gunung Raja Paksi, we always nurture the culture of continues improvement through achievement and advancement in all fields of development. We grow and prosper together with all our business partners by learning persistently.

Finally, as our group continues to grow and expand, we expect continues support and participation from our business partners to have a long-term relationship.

Best Regards,  
President Director.







## About Us

### Production Capacity

**2,8<sub>00,000</sub>**  
tons of steel annually

**PT Gunung Raja Paksi Tbk is a member of Gunung Steel Group, one of the largest private steel companies in Indonesia.**

PT Gunung Raja Paksi Tbk (GRP) is a member of Gunung Steel Group, one of the largest private steel companies in Indonesia. Established in 1970 in Medan, North Sumatra, our company started the business by producing hot steel, gradually producing beams and steel sheets.

In 1991, PT Gunung Naga Mas transitioned to PT Gunung Raja Paksi (GRP). GRP is located in Cikarang Barat, West Java Province, Indonesia, covering more than 200 hectares.

With more than 50 years of experience in the steel industry, we produce 2,800,000 tons of high quality steel annually certified by local and international certification organizations.

Today, our company has become one of the largest private steel companies in Indonesia.

Gunung Raja Paksi, "Shaping Tomorrow". Together we develop a better future.



SHAPING TOMORROW

## The Rise of the Next Generation

The new logo of PT Gunung Raja Paksi Tbk marks a new milestone in the journey of the company as it progresses under the leadership of the next generation.

The logo was designed to be relevant with the spirit of the new leadership and the current demand of the industry. It signifies the growth of the company together with the nation.

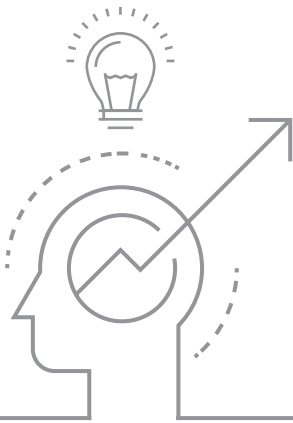
The red colour of the new logo represents courage while the diagonal line represents agility and speed of the next generation.





## Our Vision

Establish PT Gunung Raja Paksi Tbk as the most competitive and become valuable benchmark for large private steel company in Indonesia.



## Our Mission

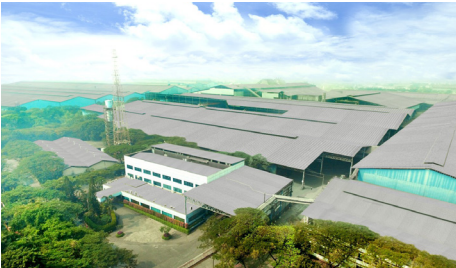
To ensure stakeholders and customers satisfaction through innovation, efficiency, productivity, quality products and services as well as company social responsibility to enable company sustainability.





# Milestone

## 1970



- PT. Gunung Gahapi Sakti was established. As a result of merging between PT. Gunung Gahapi and PT. Gunung Sakti

## 1991



- PT Gunung Naga Mas transformed into PT Gunung Raja Paksi (GRP), producing steel sheets.

## 2000



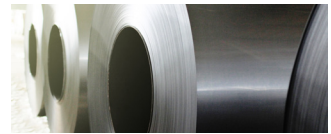
- PT. Gunung Raja Paksi Started producing a Hot Rolled Steel Plate in the last quarter of 2000.

## 2001



- BSC (Bar Service Center) and PSC (Plate Service Center) were established in 2001.

## 2002



- CSC (Coil Service Center) was established in 2002.

## 2014



- Ground breaking of Blast Furnace Plant in Cikarang Barat, Bekasi, West Jawa.

## 2017



- Gunung Garuda and Gunung Raja Paksi became PMDN companies.
- Gunung Steel Constuction was changed it's name to PT. Gunung Baja Konstruksi, and became PMDN company.
- PT. Gunung Raja Paksi started production of Slab.



**1992**



- SSC (Steel Service Center) was established in 1992.

**1997**



- PT. Bukit Terang Paksi Galvanizing was established in early 1997. Then the ESC (Engineering Service Center) division.

**1998**



- PT. Gunung Gahapi Bahara was established to respond to the high demand for quality steel in Indonesia.

**2010**



- GRP acquired assets of PT Gunung Gahapi Bahara

**2011**



- GSG introduced Normalizing, a new service way to provide the best services and quality to customers.

**2012**



- PT. Bukit Terang Paksi Galvanizing and ESC Division merged to become PT. Gunung Steel Construction.

**2019**



- GRP became Indonesia Public Listed Company (Thicker: GGRP)

**2020**  
**GRP**



- GRP made changes to a new logo that was more dynamic and professional in character



## Global Market

As one of the largest steel producers in Indonesia with the widest product range makes a good reputation for GRP among global industrial companies. The ability of GRP has been proven by international market customers satisfaction for its quality products.



### Asia

Cambodia  
Japan  
Malaysia  
Papua New Guinea  
Philippines  
Singapore  
South Korea  
Taiwan  
Thailand  
Timor Leste  
Vietnam

### Australia

Australia  
New Zealand

### Africa

Kenya  
Mauritius  
Reunion  
Uganda

### South Asia

Bangladesh  
India  
Pakistan  
Sri Lanka

### Europe

Benelux (Belgium,  
Netherlands,  
Luxemburg)  
England  
France  
Germany  
Italy  
Portugal  
Spain

### Middle East

Saudi Arabia  
United Arab Emirate

### America

Brazil  
Canada  
USA







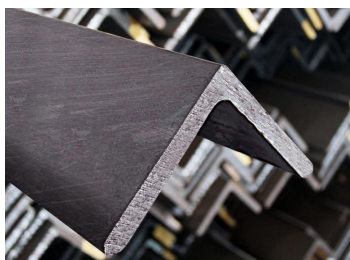
## GRP Products

The company is excited that the high demand of steel materials especially in oil and gas industry will bring us to continue expand and to have ability to offer new specification with high quality materials for our customers.





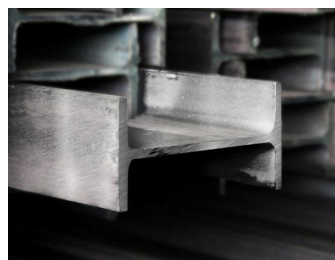
### LONG PRODUCT



ANGLE (HOT ROLLED)



H-BEAM

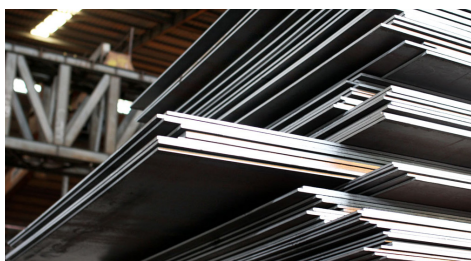


WIDE FLANGE (IWF)



WIRE ROD

### FLAT PRODUCT



STEEL PLATE



HOT ROLL COIL (HRC)



COIL PLATE

### DOWNSTREAM PRODUCT



ANNEALED WIRE



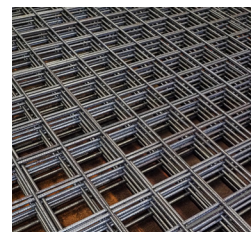
GALVANIZED WIRE



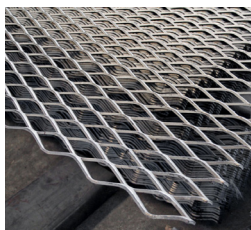
NAILS



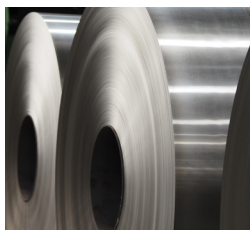
NAILS WIRE



WIRE MESH



EXPANDED MESH



COLD ROLL COIL (CRC)



WELDED BEAM



ERW PIPE



LIPPED CHANNEL



CUT TO SHAPE



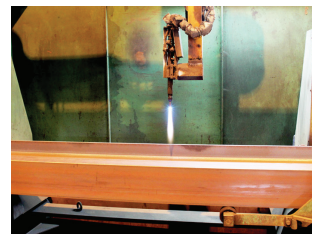
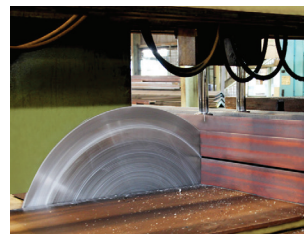
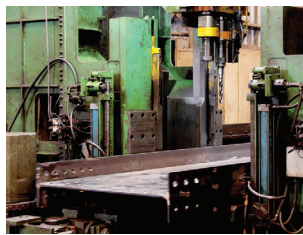
SPIRAL PIPE



DRAWN WIRE



# GRP Services



## Steel Service Center (SSC)

### Available Products:

- Angle (HR)
- Cell Form
- Channel (UNP)
- H-Beam (HR)
- Honey Comb
- King Cross
- Queen Cross
- T-Beam
- Welded Beam
- Wide Flange Beam (IWF).

### Service Provided:

Angle Line: Cutting, Punching, Stamping  
 Special Operations: Bending, Chamfering, Notch-ing.  
 Beam Line: Bending, Cutting (90° & 45°), Drilling  
 Copying (Honey Comb) Painting Shot Blasting.  
 Welded Beam Line: Build Up Beam, Tacking, Welding, Straightening.



## Coil Service Center (CSC)

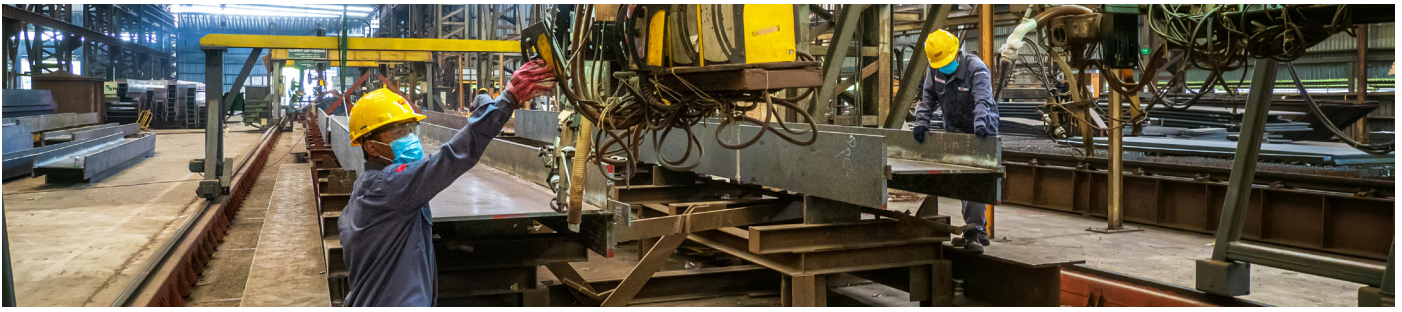
### Available Products:

custom fabrication  
 Hot Rolled Coil

### Service Provided:

Leveling - Cut to Length  
 Maximum Coil Mass 25 Ton  
 Minimum Entry Width 1200 mm  
 Maximum Entry Width 1524 mm  
 Maximum Thickness 12 mm  
 Maximum Cut Length 12 M





## Plate Service Center (PSC)

### Available Products:

- Hot Rolled Steel Plate
- C-Channel
- Equal Angle
- Bridge Deck
- Caping/Flashing/Trim
- Floor Deck

### Service Provided:

Cut to Shape  
 Plate Line : Bending, Drilling, Punching, Shearing, Stamping.



## Forming Service Center (FSC)

### Available Products:

- Lipped Channel
- ERW Pipes
- Rectangular Hollow Section
- Expanded Mesh
- Square Hollow Section

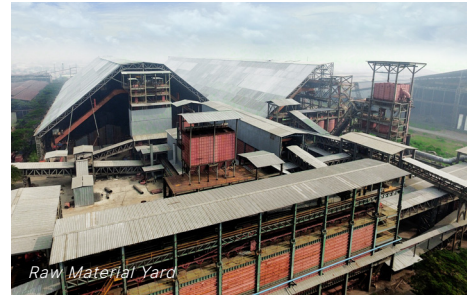
### Service Provided:

- Cut to Shape
- Beveling
- Cut to Length
- Drilling
- Forming
- Punching & Stamping



# Facilities

## Facilities and Premises



## Machinery and Technology





# Corporate Social Responsibility (CSR)

GRP is highly committed to improving the people’s welfare by implementing various programs that are expected to improve the quality of life for the community, especially the people of Indonesia.

Our CSR is not just limited to the development and improvement of the human society in general, but also exercising good corporate governance which includes customer awareness, human resource development, green environment development and support in community development and social environment, achieving the ISO 26000 for the company.

GSG has 5 main pillars of corporate social responsibility (CSR):

- **Building Human Capital,** Creating internally reliable human resources, while externally building community empowerment.
- **Strengthening Surrounding Local Economies,** Companies exist not just to benefit themselves, but also to benefit the surrounding economy.
- **Maintaining Social Harmony,** Efforts to maintain harmony with the surrounding community so as not to cause conflict.
- **Encouraging Good Governance,** Companies must refer to Good Corporate Governance (GCG) for the business well-being.
- **Protecting the Environment,** Companies must strive to maintain environmental sustainability.





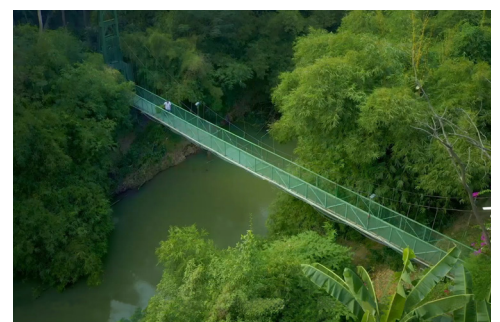
## Sustainable Growth

**As one of the largest steel producers in Indonesia with more than 270 million population, GRP continues to show sustainable growth in all areas. Until now, there are more than 4500 qualified employees, who have undergone rigorous training, helping GSG achieve corporate success in Indonesia.**

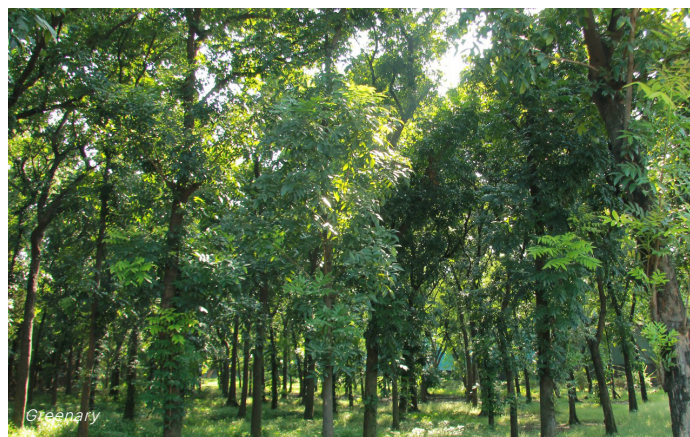
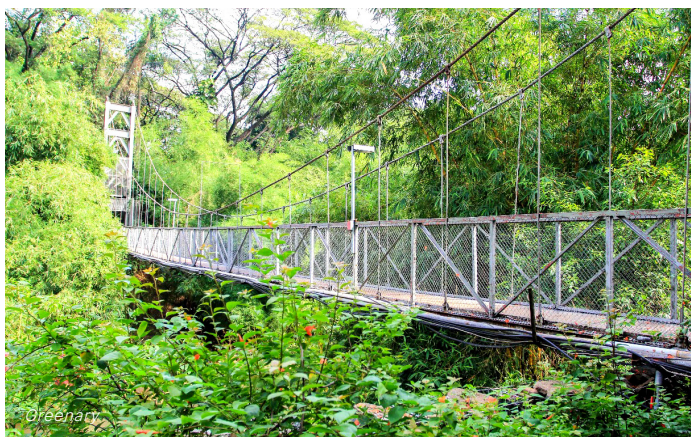
As consumer demand grows in the 4th most populated country in the world, GRP is relentlessly developing new innovations and quality products that are in demand in the domestic and foreign market. As a matter of fact, all GRP facilities are equipped with the latest technology to produce steel products in large quantities and shorter time to meet increasing market demand.

By now, GRP has achieved production capacity of around 2.8 million tons per year. In the coming years, GRP will continue to grow and ensure the fulfillment of the need for high quality steel products.

The development of good facilities will be key to achieving GRP success. GRP has plans to build new factories, reliable transportation modes, and office apartments around the factory area as part of our efforts to improve the quality and well-being of our companies and employees, creating economies of scale and contributing to the development of Indonesia.









## **PT Gunung Raja Paksi Tbk**

HEAD OFFICE & FACTORY

Jl. Perjuangan No. 8, Kp.Tangsi RT. 004/006  
Sukadanau, Cikarang Barat, Bekasi 17530  
West Java, INDONESIA

Phone : +62 21 890-0111 (Hunting) / 890-0222

Fax : +62 21 890-0555 / 890-1588

Email: [gsg@gunungsteel.com](mailto:gsg@gunungsteel.com)

 [gunung raja paksi](#)

 [@gunungrajapaksi](#)

 [@gunungrajapaksi.tbk](#)

 [@gunungrajapaksi](#)

 [www.gunungrajapaksi.com](http://www.gunungrajapaksi.com)



**GRP**