



# Climate normals S. Bernardino

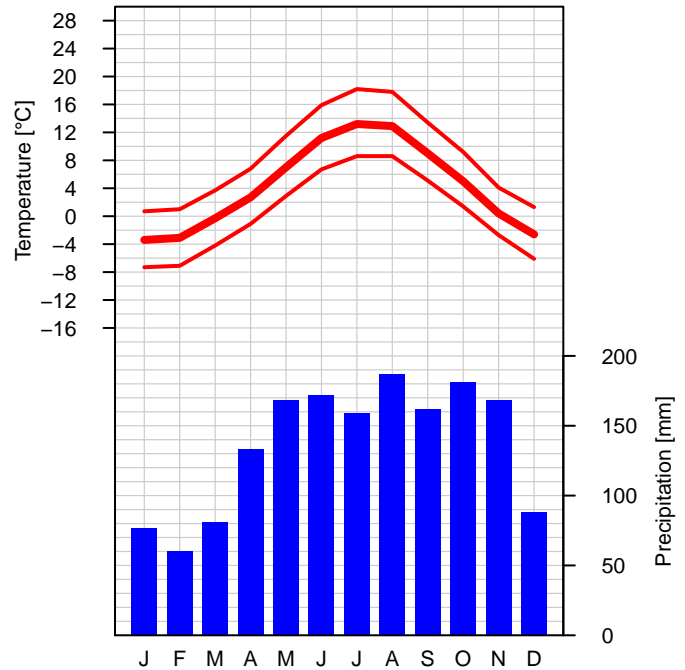
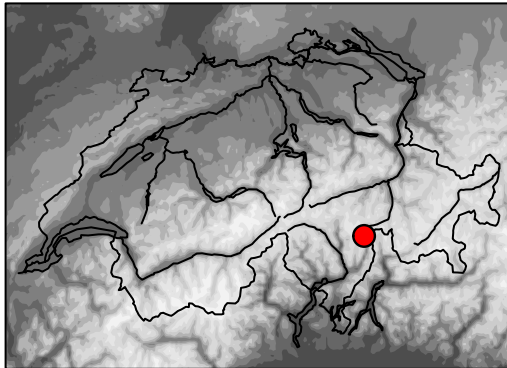
Reference period 1991–2020

**Altitude a.s.l.:** 1639 m

**Geogr. coord.:** 46.46 N / 9.18 E

**Swiss coord.:** 2'734'116 / 1'147'294

**Climate region:** Alpine south side



	Jan	Feb	Mar	Apr	May	Jun	Jul	Aug	Sep	Oct	Nov	Dec	Year
<b>Temperature [°C]</b>	-3.4	-3.1	-0.3	2.7	7.0	11.2	13.2	12.9	9.0	5.0	0.4	-2.6	4.3
<b>Maximum temp [°C]</b>	0.7	1.0	3.7	6.8	11.5	15.9	18.2	17.8	13.4	9.2	4.1	1.3	8.6
<b>Minimum temp [°C]</b>	-7.3	-7.1	-4.2	-1.1	2.9	6.7	8.6	8.6	5.1	1.4	-2.7	-6.1	0.4
<b>Ice days [days]</b>	13.9	12.1	5.8	1.3	0.1	0.0	0.0	0.0	0.0	0.4	5.0	11.5	50.1
<b>Frost days [days]</b>	30.3	27.2	27.0	18.0	3.9	0.2	0.0	0.0	1.1	10.6	22.7	29.8	170.8
<b>Summer days [days]</b>	0.0	0.0	0.0	0.0	0.0	0.3	0.2	0.6	0.0	0.0	0.0	0.0	1.1
<b>Heat days [days]</b>	0.0	0.0	0.0	0.0	0.0	0.0	0.0	0.0	0.0	0.0	0.0	0.0	0.0
<b>Sunshine [h]</b>	97	107	141	128	128	145	163	154	133	109	81	86	1470
<b>Sunshine [%]</b>	54	56	52	44	40	44	49	50	49	48	45	51	48
<b>Bright days [days]</b>	13.4	12.4	11.9	8.4	6.7	6.3	7.2	8.6	9.8	11.4	10.6	12.5	119.2
<b>Cloudy days [days]</b>	9.4	7.9	8.9	11.2	12.5	9.2	6.9	7.9	9.6	11.8	12.6	10.7	118.6
<b>Precipitation sum [mm]</b>	77	60	81	133	168	172	159	187	162	181	168	88	1637
<b>Precipitation 1 mm [days]</b>	7.6	6.5	8.1	10.1	14.1	12.5	12.0	12.7	10.0	11.1	10.7	8.5	123.9
<b>Precipitation 5 mm [days]</b>	4.0	3.3	4.4	6.4	8.7	8.0	7.9	8.4	6.4	7.4	6.7	4.4	76.0
<b>Precipitation 10 mm [days]</b>	2.5	1.7	2.6	4.4	5.9	5.4	5.0	5.9	4.3	5.1	5.0	2.6	50.4
<b>Precipitation 50 mm [days]</b>	0.1	0.1	0.1	0.2	0.3	0.6	0.4	0.7	0.7	0.9	0.7	0.1	4.9
<b>Precipitation 100 mm [days]</b>	0.0	0.0	0.0	0.0	0.0	0.0	0.1	0.0	0.1	0.1	0.1	0.0	0.4



## Climate normals S. Bernardino

Reference period 1991–2020

	Jan	Feb	Mar	Apr	May	Jun	Jul	Aug	Sep	Oct	Nov	Dec	Year
<b>Precipitation 0%–q [mm]</b>	6	3	3	17	35	55	55	7	29	5	3	0	870
<b>Precipitation 20%–q [mm]</b>	25	22	31	68	109	99	102	131	60	65	56	41	1337
<b>Precipitation 40%–q [mm]</b>	49	31	61	91	131	147	135	174	115	118	101	67	1538
<b>Precipitation 60%–q [mm]</b>	72	59	86	134	155	192	155	209	146	172	167	96	1679
<b>Precipitation 80%–q [mm]</b>	118	94	115	199	229	236	221	242	273	287	238	146	1907
<b>Precipitation 100%–q [mm]</b>	246	258	224	395	395	383	323	320	458	501	647	253	2389
<b>Snowfall [cm]</b>	98	81	69	67	–	–	–	–	–	–	70	89	–
<b>Snowfall [days]</b>	8.5	7.5	7.8	6.4	–	–	–	–	–	–	7.1	9.2	–
<b>Snow cover &gt; 0 cm [days]</b>	30.0	28.2	30.3	21.1	–	–	–	–	–	–	17.0	25.9	–
<b>Snow cover &gt; 1 cm [days]</b>	29.9	28.2	30.3	20.9	–	–	–	–	–	–	15.7	25.5	–
<b>Snow cover &gt; 10 cm [days]</b>	28.4	28.0	29.3	18.4	–	–	–	–	–	–	9.4	22.6	–
<b>Snow cover &gt; 50 cm [days]</b>	19.1	21.1	20.3	8.9	–	–	–	–	–	–	2.4	9.1	–
<b>Relative humidity [%]</b>	66	63	66	71	73	72	72	75	77	77	74	68	71
<b>Vapor pressure [hPa]</b>	3.2	3.1	4.0	5.2	7.3	9.6	10.9	11.1	8.8	6.8	4.8	3.5	6.5
<b>Air pressure station [hPa]</b>	833.4	832.2	832.3	832.1	835.2	837.6	838.6	839.0	837.6	836.3	833.3	833.5	835.1
<b>Air pressure red. 850 [m]</b>	1484	1472	1472	1468	1496	1517	1527	1531	1518	1507	1481	1484	1496
<b>Wind speed [m/s]</b>	2.7	3.0	2.8	2.5	2.3	2.3	2.4	2.2	2.1	2.0	2.2	2.5	2.4
<b>Wind 10 m/s [days]</b>	5.1	4.9	3.4	1.0	0.6	0.4	0.3	0.4	0.6	0.8	2.5	3.6	23.6
<b>Wind 20 m/s [days]</b>	0.0	0.0	0.0	0.0	0.0	0.0	0.0	0.0	0.0	0.0	0.0	0.0	0.0
<b>Wind 30 m/s [days]</b>	0.0	0.0	0.0	0.0	0.0	0.0	0.0	0.0	0.0	0.0	0.0	0.0	0.0
<b>Visibility &lt; 100 m [days]</b>	–	–	–	–	–	–	–	–	–	–	–	–	–
<b>Visibility &lt; 1000 m [days]</b>	–	–	–	–	–	–	–	–	–	–	–	–	–

Snow data: MeteoSchweiz, Eidg. Institut für Schnee- und Lawinenforschung



## Climate normals S. Bernardino

Reference period 1991–2020

### Legend:

<b>Climate graph:</b>	Graph showing long-term means of monthly mean temperature, mean monthly maximum and minimum temperature as well as monthly precipitation sums of a certain measuring site.
<b>Table:</b>	Long-term means of monthly mean values and monthly sums of different climatological parameters. Missing values (no measurements or measuring period too short) are labeled as "-".
<i>Temperature [°C]</i>	monthly mean temperature
<i>Maximum temp [°C]</i>	monthly mean of daily maximum temperature
<i>Minimum temp [°C]</i>	monthly mean of daily minimum temperature
<i>Ice days [days]</i>	number of days with maximum temperature below 0° Celsius
<i>Frost days [days]</i>	number of days with minimum temperature below 0° Celsius
<i>Summer days [days]</i>	number of days with maximum temperature equal to or above 25° Celsius
<i>Heat days [days]</i>	number of days with maximum temperature equal to or above 30° Celsius
<i>Sunshine [h]</i>	measured sunshine duration
<i>Sunshine [%]</i>	ratio of measured sunshine duration to possible sunshine duration
Bright days [days]	number of days with sunshine duration greater than 80%
Cloudy days [days]	number of days with sunshine duration less than 20%
<i>Precipitation sum [mm]</i>	monthly precipitation sum
<i>Precipitation X mm [days]</i>	number of days with precipitation equal to or above X mm
<i>Precipitation X%-q [mm]</i>	X%-quantile of the monthly precipitation sums (0%: lowest value; 40%: 40%/60% of the values are lower/higher than this value; 100%: highest value) Attention: Annual values do not correspond to the sum of the monthly values.
Snowfall [cm]	monthly snowfall sum
Snowfall [days]	number of days with snowfall equal to or above 1 cm
Snow cover > X cm [days]	number of days with snow cover above X cm
Relative humidity [%]	monthly mean of relative humidity
<i>Vapor pressure [hPa]</i>	monthly mean of vapor pressure
<i>Air pressure station [hPa]</i>	monthly mean of air pressure at station level
<i>Air pressure red. 850 [m]</i>	monthly mean of the geopotential height of the 850 hPa level
<i>Wind speed [m/s]</i>	mean monthly wind speed
Wind X m/s [days]	number of days with wind speed (10min mean) equal to or above X m/s
Visibility < X m [days]	number of days with visibility < X m (at least once a day). A visibility below 1000 m is also called fog.

Homogeneous data series were used to calculate long-term means for the parameters shown in italics. The selection of the parameters is based on the guidelines of the World Meteorological Organization (WMO–No. 1203). The values can change due to continuous quality control and homogeneity updates. Further information on the Swiss climate and on the homogenization topic can be found on [www.meteoswiss.ch](http://www.meteoswiss.ch).