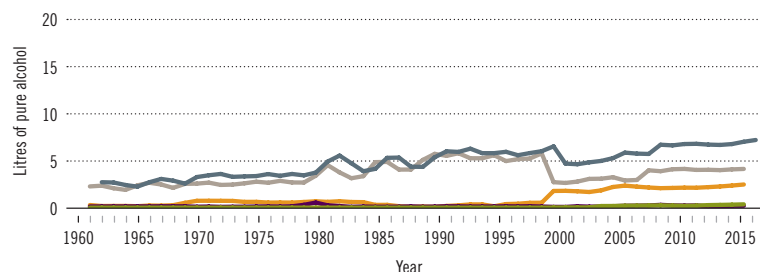


Saint Vincent and the Grenadines

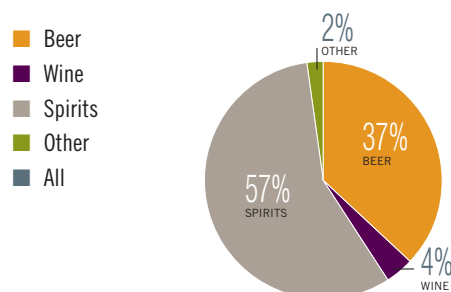
Total population (2016): 109 644 ▶ Population aged 15 years and older (15+): 76% ▶ Population in urban areas: 51% ▶ Income group (World Bank): Upper-middle income

ALCOHOL CONSUMPTION: LEVELS AND PATTERNS

Recorded alcohol per capita (15+) consumption, 1961–2016



Recorded alcohol per capita (15+) consumption (in litres of pure alcohol) by type of alcoholic beverage, 2016 or latest year available



Alcohol per capita (15+) consumption (in litres of pure alcohol)

	2010*		2016*	
Recorded	6.9		7.4	
Unrecorded	0.3		1.4	
Total**	6.8		8.2	
Total males / females	11.2	2.2	13.7	2.7
WHO Region of the Americas	8.2		8.0	

* Three-year averages of recorded and unrecorded for 2009–2011 and 2015–2017; **adjusted for tourist consumption.

Total alcohol per capita (15+) consumption, drinkers only (in litres of pure alcohol), 2016

	Litres
Males (15+)	22.7
Females (15+)	8.2
Both sexes (15+)	17.7

Prevalence of heavy episodic drinking* (%), 2016

	Population (15+ years)	Drinkers only (15+ years)	Population (15–19 years)	Drinkers only (15–19 years)
Males	36.5	60.5	29.5	67.0
Females	8.4	25.7	6.0	30.3
Both sexes	22.6	48.4	17.9	55.8

* Consumed at least 60 grams or more of pure alcohol on at least one occasion in the past 30 days.

Abstainers (%), 2016

	Males	Females	Both sexes
Lifetime abstainers (15+)	16.9	41.3	29.0
Former drinkers* (15+)	22.8	25.9	24.3
Abstainers (15+), past 12 months	39.7	67.2	53.4

* Persons who used to drink alcoholic beverages but have not done so in the past 12 months.

HEALTH CONSEQUENCES: MORTALITY AND MORBIDITY

Age-standardized death rates (ASDR) and alcohol-attributable fractions (AAF), 2016

	ASDR*		AAF (%)		AAD** (Number)
Liver cirrhosis, males / females	13.6	1.3	69.5	44.0	4
Road traffic injuries, males / females	19.5	5.4	5.1	1.3	4
Cancer, males / females	256.5	160.7	37.1	22.3	6

* Per 100 000 population (15+); **alcohol-attributable deaths, both sexes.

Years of life lost (YLL) score*, 2016

LEAST < 1 2 **3** 4 5 > MOST

* Based on alcohol-attributable years of life lost.

Prevalence of alcohol use disorders and alcohol dependence (%), 2016*

	Alcohol use disorders**	Alcohol dependence
Males	10.0	3.9
Females	3.7	1.8
Both sexes	6.9	2.8
WHO Region of the Americas	8.2	4.1

* 12-month prevalence estimates (15+); **including alcohol dependence and harmful use of alcohol.

POLICIES AND INTERVENTIONS

Written national policy (adopted/revised) / National action plan	No / —
Excise tax on beer / wine / spirits	Yes / Yes / Yes
National legal minimum age for off-premise sales of alcoholic beverages (beer / wine / spirits)	18 / 18 / 18
National legal minimum age for on-premise sales of alcoholic beverages (beer / wine / spirits)	18 / 18 / 18
Restrictions on on-/off-premise sales of alcoholic beverages (any): Hours, days / places, density Specific events / intoxicated persons / petrol stations	Yes, No / No, No No / Yes / No

National maximum legal blood alcohol concentration (BAC) when driving a vehicle (general / young / professional), in %	No / No / No
Legally binding regulations on alcohol advertising / product placement (any)	No / No
Legally binding regulations on alcohol sponsorship / sales promotion (any)	No / No
Legally required health warning labels on alcohol advertisements / containers (any)	No / No
National government support for community action (any)	No
National monitoring system(s) (any)	No