

BIBLIOTHEEK
NEDERLANDSCH
LEGERMUSEUM
No. C-43-40

MARSCHEN en SIGNALEN

Voor de Tamboers en Pypers van de Armée
Zynre K. H. den Souverainen Vorst der
Vereenigde Nederlanden.

Vervaardigd op Last

Van Zyne Excellentie den Heere Commissaris Generaal
Voor het Departement van Oorlog.

door

J. RAUSCHER.

IN S'GRAVENHAGE

Gegraveerd en Gedrukt by E.J. WEYGAND. Koopman in Muzick, Muzick Instrumenten,
Van Z. K. H. den Souverainen Vorst der Vereenigde Nederlanden.

VERKLARING.

Van de Slagen, en tekens der Tamboers, by de Noten geplaatst

Een enkel slag Een dubbel slag Een vlam slag Een Appel slag Met de onder hand
 Met de boven hand De voort durende wisseling van onder en boven hand. Twee slagen Met een stok Met de eenestok Op den anderen
 Een ra Een roffel van 7. Een roffel van 9. De langere roffels naa de waardy der noot

AANMERKING

ALLE Marschen worden drie stemmig geblazen, indien er drie, of meer Pypers by een zyn. Joder party wordt zoo veel mogelyk door ten gelyk getal Pypers bezet. voor de Eerste en tweede party gebruikt men de E. FLUITER, en voor de derde party de A. FLUIT. Een Pypst alleen zyde, gebruikt by de C. FLUIT.

DE doode Marsch wordt op drie A. FLUITEN geblazen, en laagzaam gespeelt; op ieder maat vier passen.

APPLICATIE DER PYPERS FLUIT

The image shows a musical score for a flute, titled "APPLICATIE DER PYPERS FLUIT". The score is written on a single staff with a treble clef and a key signature of one sharp (F#). The melody consists of a series of eighth and sixteenth notes. Below the staff is a large diagram of a flute with 17 vertical lines representing the fingerings for each note. Each line has a series of dots representing the keys. Some dots are filled in (black), and some are empty (white). The fingering for each note is indicated by the pattern of filled and empty dots. The diagram is enclosed in a rectangular frame.

BY het bespelen van deze FLUIT, dient men op de navolgende
Teekens te letten.

- Door deze zwarte pointe zyn de gaten, die gesloten worden.
- Door dit teken die open blyven.

1^{ste} FLUIT in E.

REVEILLE

VERGADERING

APPEL

1^{te} FLUIT in E.

5

GENERALE
MARSCH

Musical score for 'GENERALE MARSCH' in E major, 2/4 time. The score consists of three staves. The first staff begins with a treble clef and a key signature of one sharp (F#). The music features a rhythmic pattern of eighth and sixteenth notes, with some triplet markings. The second and third staves continue the melody and accompaniment, ending with a double bar line.

MARSCHEN VOOR DE GEWOONE PAS

N^o 1.

Musical score for 'MARSCHEN VOOR DE GEWOONE PAS' in E major, 2/4 time. The score consists of four staves. The first staff begins with a treble clef and a common time signature (C). The music features a rhythmic pattern of eighth and sixteenth notes, with some triplet markings. The second, third, and fourth staves continue the melody and accompaniment, ending with a double bar line.

6

1^{ste} FLUIT

N^o. 2.

MARSCHEN VOOR DE GEWOONE PAS

Musical notation for March No. 2, consisting of three staves. The first staff begins with a treble clef, a key signature of one sharp (F#), and a common time signature (C). The music is written in a rhythmic, march-like style with many eighth and sixteenth notes. The second and third staves continue the melody and include repeat signs at the end.

N^o. 3.

Musical notation for March No. 3, consisting of three staves. The first staff begins with a treble clef, a key signature of one sharp (F#), and a common time signature (C). The music is written in a rhythmic, march-like style with many eighth and sixteenth notes. The second and third staves continue the melody and include repeat signs at the end.

MARSCHEN VOOR DE GEZWINDE PAS

N^o. 1.

Musical notation for March No. 1, consisting of two staves. The first staff begins with a treble clef, a key signature of one sharp (F#), and a common time signature (C). The music is written in a rhythmic, march-like style with many eighth and sixteenth notes. The second staff continues the melody and includes a repeat sign at the end.

MARSCHEEN VOOR DE GRZWINEI PAS

Iste FLUIT

N^o 2.

Two staves of musical notation for No. 2. The first staff is a treble clef with a key signature of one flat and a 2/4 time signature. The second staff is a bass clef with a key signature of one flat and a 2/4 time signature. The music consists of a series of eighth and sixteenth notes, ending with a fermata.

N^o 3.

Two staves of musical notation for No. 3. The first staff is a treble clef with a key signature of one flat and a 2/4 time signature. The second staff is a bass clef with a key signature of one flat and a 2/4 time signature. The music consists of a series of eighth and sixteenth notes, ending with a fermata. The word "FIN" is written above the second staff.

N^o 4.

Two staves of musical notation for No. 4. The first staff is a treble clef with a key signature of one flat and a 2/4 time signature. The second staff is a bass clef with a key signature of one flat and a 2/4 time signature. The music consists of a series of eighth and sixteenth notes, ending with a fermata. The letters "D.C" are written above the second staff.

N^o 5.

Two staves of musical notation for No. 5. The first staff is a treble clef with a key signature of one flat and a 2/4 time signature. The second staff is a bass clef with a key signature of one flat and a 2/4 time signature. The music consists of a series of eighth and sixteenth notes, ending with a fermata.

MARSCHEM VOOR DE GEZWINDE PAS

1^{ste} FLUIT
N^o 6.

Musical notation for the first flute part, measures 1-16. The staff is in treble clef with a key signature of one flat (B-flat) and a 2/4 time signature. The music consists of a series of eighth and sixteenth notes.

WILHELMUS

Musical notation for the Wilhelmus part, measures 1-16. The staff is in treble clef with a key signature of one flat and a 2/4 time signature. The music features a rhythmic pattern of eighth notes.

PROKLAMATIE

Musical notation for the Proklamatie part, measures 1-16. The staff is in treble clef with a key signature of one flat and a 2/4 time signature. The music includes a section with lyrics: "Naa het eindigen der Proklamatie" and "en kaffie".

WATER MARSCH

Musical notation for the Water Marsch part, measures 1-16. The staff is in treble clef with a key signature of one flat and a 2/4 time signature. The music features a rhythmic pattern of eighth notes.

DOODEN MARSCH VOOR DRIE A. FLUITEN.

1^{ste} FLUIT.

The first flute part consists of three staves of music. The first staff begins with a treble clef and a common time signature (C). The music is written in a key with one sharp (F#). The notation includes various note values, rests, and dynamic markings. The second and third staves continue the melodic line with similar notation.

ORDER

The 'ORDER' section is a single staff of music in treble clef with a key signature of one sharp (F#). It features a melodic line with several measures of music.

A F DANKING

The 'A F DANKING' section is a single staff of music in treble clef with a common time signature (C). It contains a melodic line with various note values and rests.

TAP TOE

The 'TAP TOE' section is a single staff of music in treble clef with a key signature of one sharp (F#). It features a melodic line with several measures of music.

The final section of the piece consists of three staves of music. The first staff begins with a treble clef and a common time signature (C). The music is written in a key with one sharp (F#). The notation includes various note values, rests, and dynamic markings. The second and third staves continue the melodic line with similar notation. The word 'FIN' is written at the end of the second staff.

2^{de} FLUIT in E.

REVEILLE

Musical score for 'REVEILLE' in E major, 2/4 time. The piece consists of three staves. The first staff begins with a treble clef, a key signature of one sharp (F#), and a 2/4 time signature. The melody is characterized by eighth-note patterns and a final ascending eighth-note run. The second and third staves provide accompaniment with similar rhythmic patterns and a repeat sign at the end of the third staff.

VERGADERING

Musical score for 'VERGADERING' in E major, 2/4 time. The piece consists of three staves. The first staff begins with a treble clef, a key signature of one sharp (F#), and a 2/4 time signature. The melody features a prominent sixteenth-note triplet. The second and third staves provide accompaniment with similar rhythmic patterns and a repeat sign at the end of the third staff.

APPEL

Musical score for 'APPEL' in E major, 2/4 time. The piece consists of three staves. The first staff begins with a treble clef, a key signature of one sharp (F#), and a 2/4 time signature. The melody is composed of eighth-note patterns. The second and third staves provide accompaniment with similar rhythmic patterns and a repeat sign at the end of the third staff.

2^{de} FLUIT in E.

GENERALE
MARSCH

Musical notation for the 'GENERALE MARSCH' section, consisting of three staves. The first staff begins with a treble clef, a key signature of one sharp (F#), and a 2/4 time signature. The music is written in a rhythmic, marching style with many eighth and sixteenth notes. The second and third staves continue the melody and include repeat signs.

MARSCHEN VOOR DE GEWOONE PAS

N^o 1.

Musical notation for 'MARSCHEN VOOR DE GEWOONE PAS N° 1', consisting of four staves. The first staff begins with a treble clef, a key signature of one sharp (F#), and a common time signature (C). The music is written in a rhythmic, marching style with many eighth and sixteenth notes. The second and third staves continue the melody and include repeat signs. The fourth staff concludes the piece with a final cadence.

12

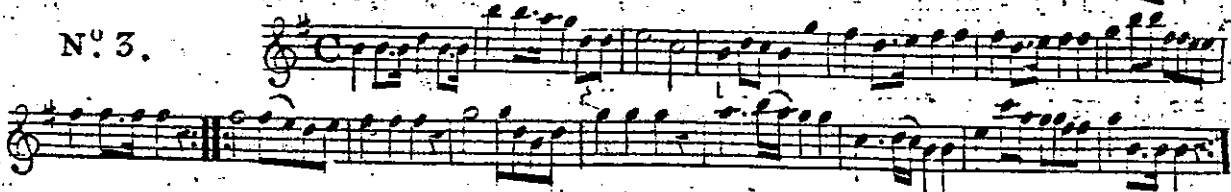
2^{de} FLUIT in E.

N^o 2.

MARSCHEN VOOR DE GEWOONE PAS



N^o 3.



MARSCHEN VOOR DE GEZWINDE PAS

N^o 1.



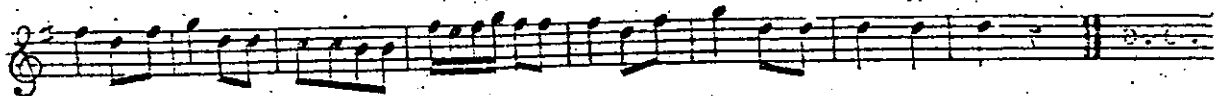
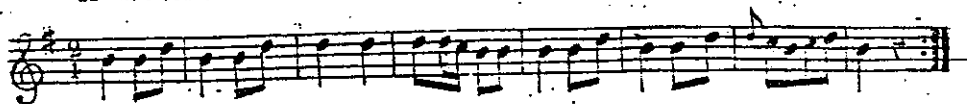
N^o 2.



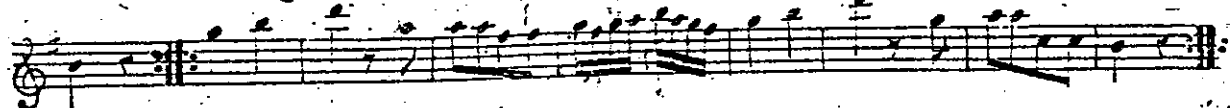
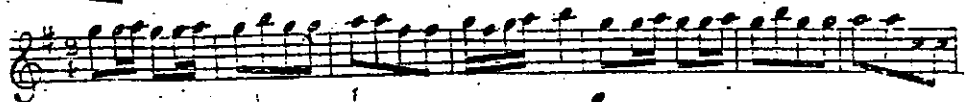
MARSCHEN VOOR DE GEZWINDE PAS

2^{de} FLUIT in E.

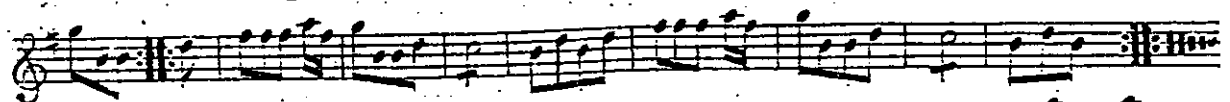
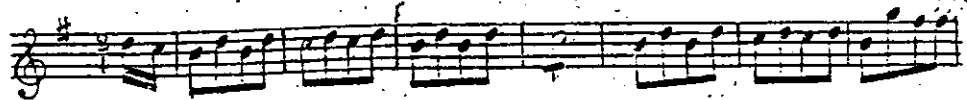
N^o 3.



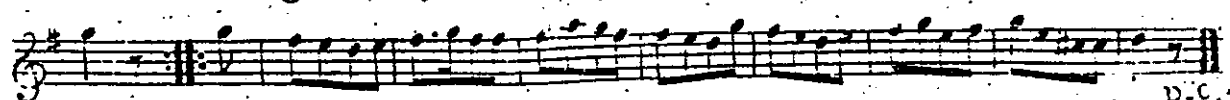
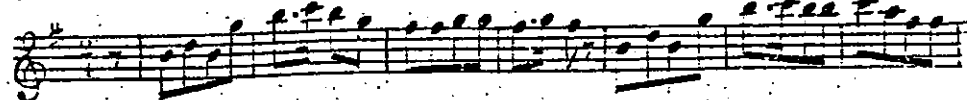
N^o 4.



N^o 5.



N^o 6.



MARSCHEN VOOR DE GEZWINDE PAS

2^{de} FLUIT

WILHELMUS



PROKLAMATIE



WATER MARSCH



DOODEN MARSCH VOOR DRIE A. FLUITEN.

2^{de} FLUIT

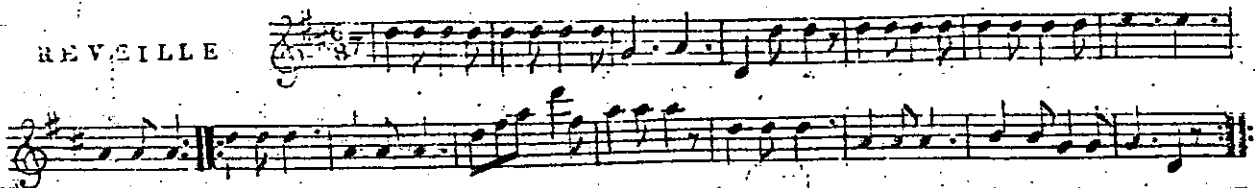
ORDER

AEDANKING

TAPTOE

3^{de} FLUIT in A.

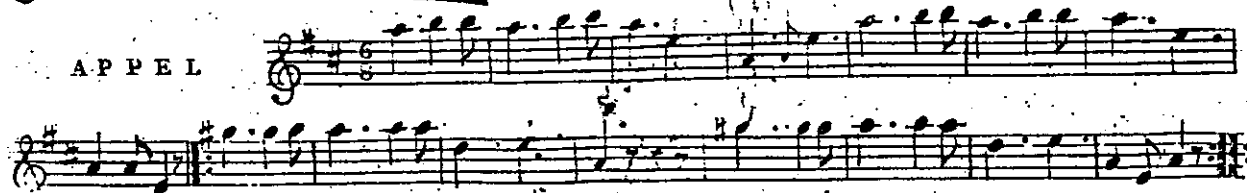
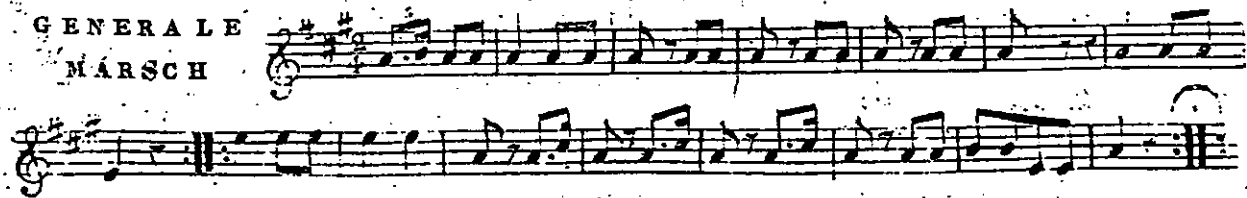
REVEILLE



VERGADERING



APPEL

GENERALE
MÄRSCH

3^{de} FLUIT in A.

MARSCHEN VOOR DE GEWOONE PAS.

N^o. 1.

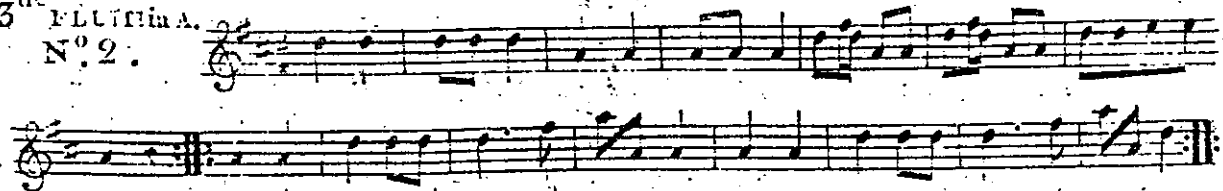
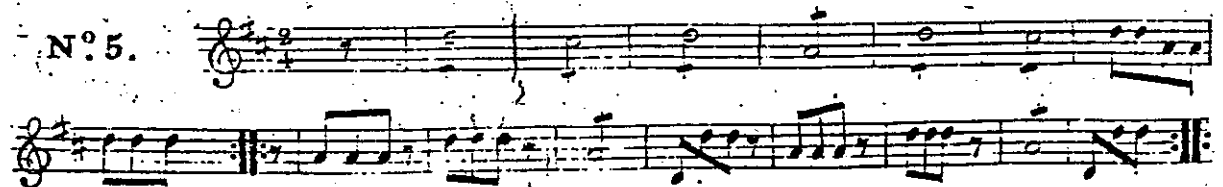
N^o. 2.

N^o. 3.

MARSCHEN VOOR DE GEZWINDE PAS

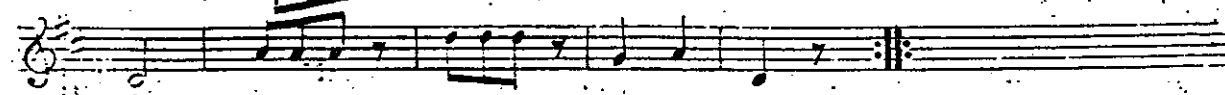
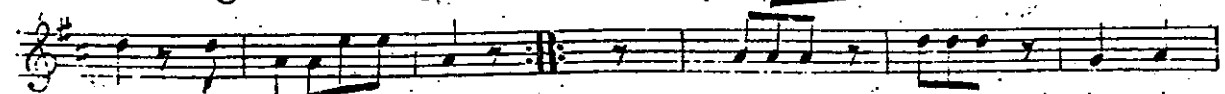
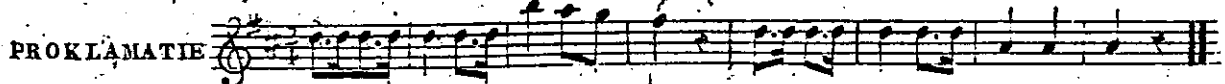
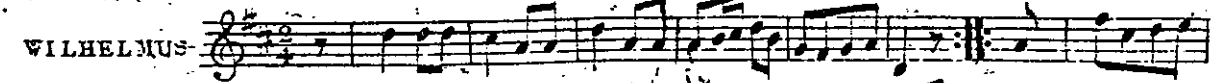
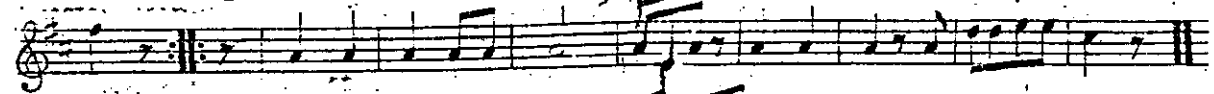
N^o. 1.

MARSCHEN VOOR DE GEZWIJDE PAS

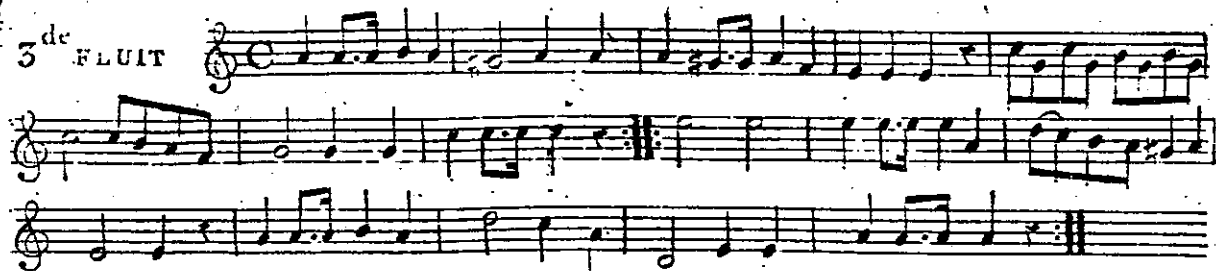
3^{de} FLUITEN.N^o. 2.N^o. 3.N^o. 4.N^o. 5.

MARSCHEN VOOR DE GEZWINDE PAS

3^{de} FLUIT in A.
N^o 6.



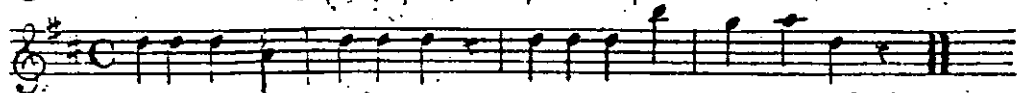
DOODEN MARSCH VOOR DRIE A. FLUITEN.

3^{de} FLUIT

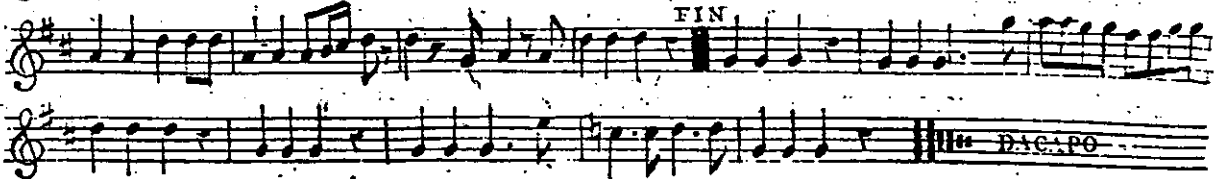
ORDER



AFDANKING



TAP TOE



T R O M M E L.

REVEILLE

Musical notation for Reveille, consisting of two staves. The first staff contains the melody with square and triangle symbols above it. The second staff contains a drum accompaniment with triangle and square symbols above it. The piece ends with a double bar line and the instruction "4 maal" (4 times).

VERGADERING

Musical notation for Vergadering, consisting of two staves. The first staff contains the melody with square and triangle symbols above it. The second staff contains a drum accompaniment with triangle and square symbols above it. The piece ends with a double bar line.

A P P E L

Musical notation for Appel, consisting of two staves. The first staff contains the melody with square, triangle, and cross symbols above it. The second staff contains a drum accompaniment with cross symbols above it. The piece ends with a double bar line and the instruction "4 maal" (4 times).

GENERALE
M A R S C H

Musical notation for Generale Marsch, consisting of two staves. The first staff contains the melody with square and triangle symbols above it. The second staff contains a drum accompaniment with triangle and square symbols above it. The piece ends with a double bar line and the instruction "4 Maal." (4 times).

MARSCHEM VOOR DE GEWOONNE FAS

T R O M M E L

N^o. 1.

Two staves of musical notation for N° 1. The top staff contains a series of rhythmic patterns with square and triangle symbols above the notes. The bottom staff contains a series of rhythmic patterns with circles below the notes. Both staves are in 2/4 time and end with a double bar line.

N^o. 2.

Two staves of musical notation for N° 2. The top staff contains a series of rhythmic patterns with circles below the notes. The bottom staff contains a series of rhythmic patterns with square and triangle symbols above the notes. The bottom staff includes the instruction "4 maal" (4 times) and ends with a double bar line.

N^o. 3.

Two staves of musical notation for N° 3. The top staff contains a series of rhythmic patterns with square and triangle symbols above the notes. The bottom staff contains a series of rhythmic patterns with circles below the notes. Both staves are in 2/4 time and end with a double bar line.

MARSCHEN VOOR DE GEZWINDE PAS

T R C M L L

N^o 1.

Musical notation for march No. 1, consisting of two staves. The first staff begins with a treble clef, a key signature of one flat (B-flat), and a 2/4 time signature. The melody is written in eighth notes with a steady eighth-note accompaniment. Above the staff, there are rhythmic markings: a square followed by a triangle, and the letters 'ra' above a group of notes. The second staff continues the melody and includes a repeat sign at the end.

N^o 2.

Musical notation for march No. 2, consisting of two staves. The first staff begins with a treble clef, a key signature of one flat (B-flat), and a 2/4 time signature. The melody is written in eighth notes with a steady eighth-note accompaniment. Above the staff, there are rhythmic markings: a square followed by a triangle, and the letters 'ra' above a group of notes. The second staff continues the melody and includes a repeat sign at the end.

N^o 3.

Musical notation for march No. 3, consisting of two staves. The first staff begins with a treble clef, a key signature of one flat (B-flat), and a 2/4 time signature. The melody is written in eighth notes with a steady eighth-note accompaniment. Above the staff, there are rhythmic markings: a square followed by a triangle, and the letters 'ra' above a group of notes. The second staff continues the melody and includes a repeat sign at the end with the instruction '+ maal' (4 times) written above it.

N^o 4.

Musical notation for march No. 4, consisting of two staves. The first staff begins with a treble clef, a key signature of one flat (B-flat), and a 2/4 time signature. The melody is written in eighth notes with a steady eighth-note accompaniment. Above the staff, there are rhythmic markings: a square followed by a triangle, and the letters 'ra' above a group of notes. The second staff continues the melody and includes a repeat sign at the end.

MARSCHEN VOOR DE GEZWINDE PAS

N^o 5.

Musical notation for N° 5, consisting of two staves of music in 2/4 time.

N^o 6.

Musical notation for N° 6, consisting of two staves of music in 2/4 time with vocal line 'ra'.

WILHELMUS

Musical notation for WILHELMUS, consisting of two staves of music in 2/4 time with vocal line 'ra' and 'D.C.'.

PROKLAMATIE

Musical notation for PROKLAMATIE, consisting of two staves of music in 2/4 time with vocal line 'ra' and '2 Maal'.

WATER MARSCH

Musical notation for WATER MARSCH, consisting of two staves of music in 2/4 time with vocal line 'ra'.

TRAMMEL

DCODEN

MARSCH

Musical notation for 'DCODEN MARSCH'. It consists of two staves. The top staff has a treble clef and a common time signature (C). The bottom staff has a bass clef and a common time signature (C). The music features a rhythmic pattern of eighth and sixteenth notes. There are square and triangle symbols above the notes. A 'B' with a vertical line through it is written above the second staff.

ORDERS

AFDANKING

ALLARM

FOURAGEREN

OM TE WERKEN

SERJANT MAJORS
APPEL

SERJANTS APPEL

FOURIERS APPEL

Musical notation for the remaining sections. Each section has its own staff with a treble clef and a common time signature (C). The notation includes various rhythmic patterns, rests, and symbols like squares, triangles, and asterisks. A vertical line is drawn through the middle of the page, separating the first four sections from the last four.

CORPORAALS
 APPEL
 ONGEWAPEND
 APPEL
 APPEL voor het Morgen
 en Middag Eeten

T H E O R I E
 APPEL voor het straf
 PELOTTON
 T A M B O E R S
 A P P E L

T A P T O E
 VISITATIE
 naa de T A P T O E
 DE LICHTEN UIT

T R O M M E L

ra 3 Maal.

Een laugen Roffel