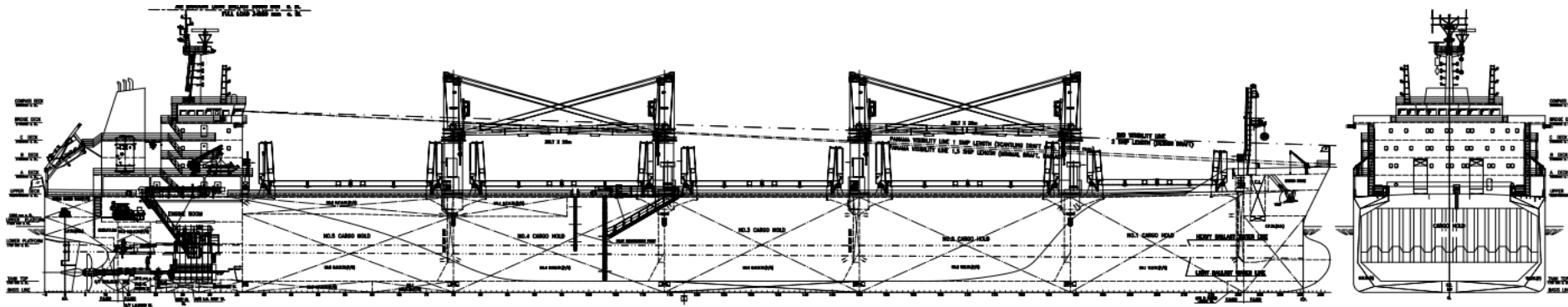


BC EMERALD 37 NEPTUN



Classification: LR 100 A1 Bulk Carrier, CSR, BC-A, GRAB[25], {Hold no. 2,4 may be empty}, LI, ESP, EP, IWS, ShipRight CM LMC UMS

Main Particulars

Length, overall	L _{oa}	189.90 m
Length, between pp	L _{pp}	183.00 m
Breadth, moulded	B	28.30 m
Depth, to main deck	D	15.20 m
Draught, design	T _{FB}	18.537,00 m
Deadweight, Tdesign	DWTdes	37,200 t
Speed on Tdes (90% MCR, 15% SM, no SG)		14.0 kn
Endurance		16,000 sm

Machinery

Main engine	Wärtsilä 6RTA-D TI	7,000 KW / 116 rpm.
Daily Consumption (90% SMCR)		26 t/d
Auxiliary Generator sets:	approx.	1,800 kWe in total
	3 x	600 kW

Fixed pitch propeller

f.p.p. 4-bladed

Outfitting

Boiler - oil-fired part / exhaust part 1.8 / 1.0 t/h

Complement: 26 Pers.

1 Pilot

Cargo cranes

outreach 30m 4 x 30 t SWL

Design Load

Uniform load on tanktop		
CH 1,3,5	25 t/m ²	
CH 2,4	20 t/m ²	
Grab weight	20 t	
Steel Coil loading	2 tiers of	20 t