

2016-2018 RESOURCE RECOVERY GUIDE

Your guide to waste
and recycling in the
Blue Mountains

TOGETHER

WE'VE GOT

IT SORTED.



blue
mountains
City Council



WHAT'S NEW FOR 2016-18

We've made some exciting improvements to your waste and recycling services...

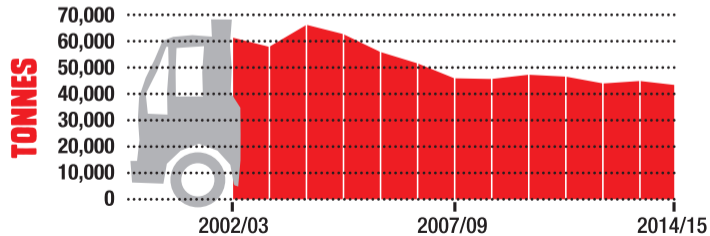
These changes make it easier for you to protect our special environment with more ways to responsibly dispose of your waste. These improvements include:

- Green bins 3
- Blue Mountains Waste Service App 3
- Fortnightly recycling collections with a choice of bin sizes 5
- Upgrade to Blaxland Resource Recovery Centre 11
- NEW problem waste accepted year round at Katoomba ... 11

DID YOU KNOW?

Over 93% of residents in the Blue Mountains regularly use their recycling bins. This commitment to recycling has had a significant impact on reducing the waste sent to landfill, but we can certainly reduce it even more by making sure we sort our waste properly. **Every little bit helps.**

WASTE LANDFILLED OVER TIME



IT'S OUR HOME TOO.

The Blue Mountains is an area of outstanding natural beauty and supports a vast array of native plants and animals.

Disposing of your waste responsibly is one of the easiest things you can do to help protect our special environment.

DID YOU KNOW?

Pouring chemicals down the drain can hurt wildlife like me. See page 11 for info on how to dispose of these safely.



IT'S OUR HOME TOO.

YOUR GREEN BIN

COLLECTED
FORTNIGHTLY

WHAT CAN I PUT IN MY GREEN BIN?



- ✓ Grass clippings
- ✓ Weeds (including noxious weeds)
- ✓ Cut flowers
- ✓ Leaves
- ✓ Garden pruning and weeds
- ✓ Branches (max. length 40cm, diameter 10cm)
- ✓ Bark
- ✓ Palm fronds
- ✓ Sticks



Garden
Vegetation
only



Only put loose
garden vegetation
in the green bin.
Don't bag it.

WHAT CAN'T I PUT IN MY GREEN BIN?

- ✗ No plastic bags or bin liners
- ✗ No garbage
- ✗ No food waste
- ✗ No pots
- ✗ No soil
- ✗ No bricks
- ✗ No tree stumps

WHEN WILL MY GREEN BIN BE COLLECTED?

- Your GREEN bin will be collected fortnightly, on your current collection day.
- We have divided collection days into **Week A** and **Week B**. To find out if your GREEN bin is collected on **Week A** or **Week B**, check the sticker on the side of your green bin, which also shows your collection day.
- **Week A** is shown as **orange** and **Week B** is **purple** on your collection calendar. See below.
- For a personalised bin collection calendar and to download our FREE Waste App, visit www.bmcc.nsw.gov.au/bincalendar

Week A

Week B



Don't put plastic bags into your GREEN bin.

DID YOU KNOW?



Using your GREEN bin will contribute to reducing waste to Blaxland landfill by up to 4,000 tonnes per year.

YOUR RECYCLING BIN

COLLECTED
FORTNIGHTLY

WHAT CAN I PUT IN MY RECYCLING BIN?



- ✓ Glass bottles & jars
- ✓ Milk & juice cartons
- ✓ Steel & aluminium cans
- ✓ Rigid plastic containers
- ✓ Paper & cardboard



- Your new RECYCLING bin will now be collected fortnightly, on the alternate week to your GREEN bin. Your collection day will remain the same. To find out which week your GREEN bin is collected, please see page 3.
- For a personalised bin collection calendar and to download our FREE Waste App, visit www.bmcc.nsw.gov.au/bincalendar



Don't put
plastic bags
into your
RECYCLING bin.

WHAT CAN'T I PUT IN MY RECYCLING BIN?

- ✗ No food scraps
- ✗ No garden waste
- ✗ No plastic bags
- ✗ No light globes
- ✗ No polystyrene
- ✗ No windows, mirrors or broken glass
- ✗ No hazardous materials (see pages 11-12)

DID YOU KNOW?

If too many of the wrong items end up in our recycling truck, there's a big chance the entire load, (up to 1,100 households' recycling) will have to be sent to landfill.



HANDY TIPS

- Crush all plastic bottles and cans and flatten cardboard boxes to make more room in your RECYCLING bin.
- Still need more space? Extra large 360 litre RECYCLING bins are available (on request) for a small annual fee.
- Or, you can drop off extra recyclable material at either of our RRWMFs for free. See page 11.
- Plastic bags can be recycled at participating supermarkets.

YOUR RECYCLING CUTS WASTE TO LANDFILL BY UP TO 25%



Call 4780 5000 to request an extra large recycling bin.

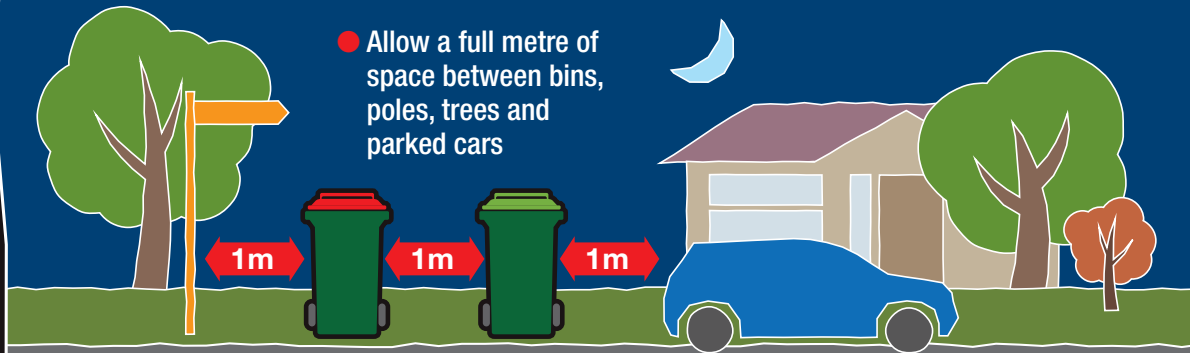
YOUR GARBAGE BIN

COLLECTED
WEEKLY



- Put your bin out by 5am on the collection day.
- Return bins to your property promptly after they have been emptied.

- Make sure your bins lids are completely closed, with no items next to the bin or on top of the bin.



- Allow a full metre of space between bins, poles, trees and parked cars

- Keep your bin weight under 90kg

- NO liquid, NO hot ashes, NO green waste

- Leave your bins behind if you move house



If your garbage bin is stolen or damaged during collection, contact Council on council@bmcc.nsw.gov.au or see the back cover.

If your garbage bin is stolen or damaged outside of your collection hours you will be charged the full cost of replacement.

Collection hours are 5pm the previous day until 5pm on your collection day.

IS YOUR GARBAGE BIN FULL MOST WEEKS?

Almost a third of your garbage is garden vegetation that can now go into your GREEN bin!

A further 25% of your garbage could be composted at your home. Find out how easy it is to recycle your food scraps and reduce waste on page 14.

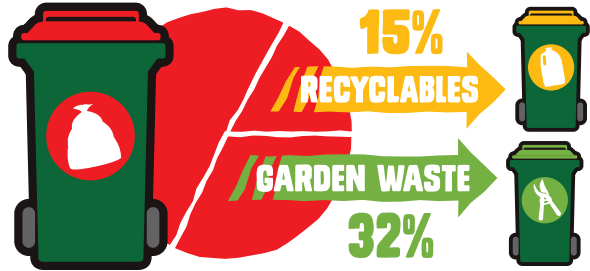
WHAT'S IN YOUR GARBAGE BIN?

DID YOU KNOW?

On average, 15% of the waste Blue Mountains residents put in their garbage bins can be recycled in the yellow RECYCLING bin. See page 5 for information about what can go in your RECYCLING bin.

From 4 July 2016, garden vegetation, which is currently 32% of the average garbage bin, can be recycled in your GREEN bin. See page 3 for information about what can go in your GREEN bin.

LANDFILL









BOOKED WASTE SERVICE

Register and request a service at www.bmccbookaservice.com.au

The **Booked Waste Service** offers kerbside chipping and bulky waste collections to residents on request. Each service (chipping or bulky) has a 4m³ limit per request (2m x 2m x 1m).

Each financial year (July to June), each household can have:

-  +  2 x chipping, OR
-  +  2 x bulky waste, OR
-  +  1 of each

Additional services are available for a fee. For details, please visit www.bmccbookaservice.com.au

BOOKING PROCESS



6 WEEKS



CHIPPING

Materials must be neatly placed in front of your property, clear of paths and driveways **THE DAY BEFORE YOUR SERVICE DATE**. Keep cut ends of branches together, parallel to the street. Please be sure to remove chipped materials promptly.

Council will chip up to 4m³ of

- ✓ Branches less than four weeks old
- ✓ Branches between one metre (1m) and three metres (3m) long
- ✓ Branches with a diameter, or width, of fifteen centimetres (15cm) or less

Council will not chip

- ✗ Very old or dry material more than four weeks old
- ✗ Logs, stumps, root balls, vines, ferns or palm fronds, which will damage the chipper blades
- ✗ Small material – grass, leaves and twigs
- ✗ Weeds in flower or seed, Bamboo or Pussy Willow. For help identifying weeds refer to www.weedsbluemountains.org.au
- ✗ Mass clearing, storm damage or hazard reduction
- ✗ Vegetation from, or in front of, vacant blocks, reserves or non-residential premises



BULKY WASTE

Materials must be placed neatly in front of your property, clear of paths and driveways **THE DAY BEFORE YOUR SERVICE DATE**. Small or loose items **MUST** be bagged or bundled to prevent littering and hazards.

Council will collect up to 4m³ of

- ✓ General household items, furniture, up to two (2) mattresses, whitegoods, lawnmowers and other large items
- ✓ Hard plastics, e-waste (computers and televisions) and up to five (5) car tyres
- ✓ Items that can be safely lifted by two people – you must break larger, heavy items into manageable parts



Council will not collect

- ✗ Heavy car parts, large rolls of carpet
- ✗ Renovation waste, building or business waste
- ✗ Glass
- ✗ Small, loose items including household waste, or items in damaged bags (e.g. bean bags)
- ✗ Pallets and milk crates, which should be returned to their owner
- ✗ Hazardous materials such as petrol, paint, motor oil, car batteries, asbestos, chemicals or gas cylinders. See page 11 for correct disposal
- ✗ Liquid waste
- ✗ Recyclables that are accepted in your RECYCLING bin. If they won't fit, take them to a waste management facility, FREE of charge
- ✗ Organic material - logs, soil, garden waste

NOT SO FAST...

Before you choose to throw an item away, ask yourself 'can this be reused?' See pages 11-12 or www.bmcc.nsw.gov.au/reuse for suggestions.

RESOURCE RECOVERY & WASTE MANAGEMENT FACILITIES (RRWMF)

TWO HANDY LOCATIONS

BLAXLAND
Attunga Road

KATOOMBA
Woodlands Road

OPEN

8am to 4.45pm 7 days a week

CLOSED

Good Friday and Christmas Day



FREE DROP OFF

The following materials are accepted **FREE** for recycling (if separated from other waste):

- ✓ Household recyclables (see page 5)
- ✓ Scrap metal such as whitegoods and car bodies
- ✓ Car batteries*, gas bottles*, fire extinguishers* and engine oil*
- ✓ Televisions* and computers* (Katoomba only). Full details at www.bmcc.nsw.gov.au/electronicwaste

All year round at Katoomba RRWMF and during Clean Out events at Blaxland:

- ✓ Paint*
- ✓ Other oil*
- ✓ Smoke detectors*
- ✓ Household batteries*
- ✓ Fluoro globes and tubes*

During **CLEAN OUT** events **ONLY**:

- ✓ Acids & Alkalis
- ✓ Pool chemicals
- ✓ Paint-related products
- ✓ Pesticides & herbicides
- ✓ Poisons
- ✓ Household cleaners & solvents
- ✓ Motor fuels & fluids
- ✓ Hobby chemicals

- **CLEAN OUT** dates are advertised in advance in the Gazette, your rates notice, on the BMCC webpage, our free Waste APP and Facebook.

NEVER dispose of hazardous waste in your household bins, down the drain or into the soil! Protect your local environment and drop them off for **FREE**.



SAFE TRANSPORT

- ✓ Use appropriate protective clothing and equipment such as gloves, eye protection and/or filter masks.
- ✓ Ensure chemicals are safely and securely packaged for transport.
- ✓ Ensure there is appropriate ventilation in your vehicle.

- This Clean Out service is for **HOUSEHOLDS**. A nominal 20L or 20kg limit applies. Chemicals from commercial or industrial premises will **NOT** be accepted.

Note: Non-residents can bring items marked with * to Katoomba RRWMF for **FREE**.

MATERIALS ACCEPTED FOR A FEE...

- ✓ Mixed waste
- ✓ Sorted re-usable waste (see box on the right)
- ✓ Furniture and other re-usable items in good condition (drop off at the re-use shed)
- ✓ Car and truck tyres (a limit of five) for recycling
- ✓ Mattresses
- ✓ Furniture and other items in good condition can be dropped at our re-use sheds (NEW)
- ✓ Special waste requiring immediate or supervised burial, such as asbestos – Blaxland RRWMF only. This needs to be booked prior to delivery to the RRWMF. Please phone Council for details on 4739 2432.

RENOVATE SUSTAINABLY & SAVE MONEY!



The average renovation generates about five tonnes of waste. These things can all be recycled at your RRWMFs but must be sorted first:

- ✓ Untreated timber & wood waste
- ✓ Clean fill
- ✓ Concrete
- ✓ Roof tiles
- ✓ Terracotta pipes

If these materials are mixed together, they are more likely to end up in landfill and will cost you more. Discuss with your builder before you start renovating.

ARE YOU A LOCAL?



Please bring proof of address (driver's licence or rates notice) to show that you are a resident of the Blue Mountains every time you use our RRWMF.



Fees and charges are available at www.bmcc.nsw.gov.au/wastecharges

REDUCING YOUR WASTE



DID YOU KNOW?

More than half of our household waste can be composted.



Compost Revolution provides a quick and convenient online composting and worm farming program for residents to use anywhere, anytime.

To help you get started Council offers high quality compost bins and worm farms at discounted prices*. By completing the **free online tutorial and quiz**, you will be able to purchase your discounted compost bin or worm farm and start reducing waste and returning valuable nutrients to your garden.

*Discounts may vary and reduce over time so get in early. One per household.

The Blue Mountains is part of the Compost Revolution!

BENEFITS OF COMPOSTING

- ✓ Odour-free garbage bin
- ✓ Reduces waste to landfill

In the garden:

- ✓ Provides nutrients and improves soil
- ✓ Conserves water

Join the Compost Revolution, visit www.compostrevolution.com.au/bluemountains

**ARE YOUR BINS
OVERFLOWING
EVERY WEEK BUT
YOU DON'T WANT
TO PAY FOR A
BIGGER BIN?**



HERE ARE SOME TIPS TO REDUCE YOUR WASTE:

The average house in NSW throws out \$1,000 worth of food every year. The following simple steps will help you reduce your food waste and save money:

✓ **Portion control** We occasionally cook too much food, so why not try these tips for your staple foods:

- 1 cup of cooked rice per adult
- 1 cup of cooked pasta per adult
- 65-100g beef or lamb per adult
- 65-100g chicken or fish per adult.

Visit www.lovefoodhatewaste.nsw.gov.au/at-home/plan-your-meals/calculate-your-serves.aspx for more portion sizing tips.

✓ If you cook too much food, why not keep the extra for lunch the next day?

✓ Many people don't realise that most fruit and vegetables, like carrots, capsicum and apples, are best kept in a container or bag they come in as it keeps them fresher for longer.

✓ Resealable packs for cheese prevent it from drying out, particularly in the fridge. If your cheese of choice doesn't have a resealable pack, make sure you put it in a plastic container.

Magnet



FOR MORE INFORMATION

VISIT www.bmcc.nsw.gov.au

EMAIL council@bmcc.nsw.gov.au

PHONE 4780 5000 or

GREEN BIN & RECYCLING HOTLINE 1300 769 746

4723 5000 (East from Linden for local call)



facebook.com/bluemountainscitycouncil

TOGETHER

WE'VE GOT

IT SORTED.



This project was supported by the Environmental Trust as part of the NSW EPA's *Waste Less, Recycle More* initiative, funded from the waste levy.