

Mt. Iwate Volcanic Disaster Prevention Map

(In case of phreatic eruption on the west side, and magma eruption on the east side)

This hazard map was made on data from the past eruption of Mt. Iwate. The aim of the map is to provide useful information about a possible eruption of Mt. Iwate to the local residents, tourism facilities and municipalities concerned to prevent disaster. There was a phreatic eruption on the western side of Mt. Iwate about 3,200 years ago and a magma eruption in 1686. The hypothetical disaster area is based on the same scale of Mt. Iwate's previous eruption. As an actual eruption can cause disaster differently from this hazard map, proper countermeasures must be taken according to the situation.

No.	Evacuation Center	Covered Area	TEL
1-1	Johoku primary school	Part of Kokuban, Takizawa VII. Part of Hosoji, Takizawa VII.	019-641-0142
1-2	Kuriyagawa junior high school	Part of Motomuraminami, Takizawa VII. Part of 2 chome Tsukigasaki Part of 3 chome Tsukigasaki	019-647-2253
1-3	Aoyama primary school	Part of 3 chome Nishi Aoyama Part of 2 chome Nishi Aoyama	019-647-0120
1-4	Daishin primary school	Part of Nagahashi cho. Part of Nakatsutsumi cho. Part of Ohdate cho. Part of Inai cho.	019-647-7531
1-5	Tsuchibuchi primary school	Part of Nagahashi cho. Sotoda, Hirakashinden. Suido Part of Takayanagi. Part of Hiraka. Shinden, Kamikuriyagawa. Part of Sagihara. Part of Maegata. Part of Haba.	019-647-4740

No.	Evacuation Center	Covered Area	TEL
2-1	Nishine primary school	Nishine	019-693-2324
2-2	Nishiyama Community Center	Kaminagayama. Part of Shimogayama.	019-693-3321
2-3	Shimo Nagayama primary school	Part of Shimogayama.	019-692-2224
2-4	General Welfare Center	Part of Shizukuishi.	019-692-2230

No.	Evacuation Center	Covered Area	TEL
3-1	Takizawa VII. East Gym	Part of Yanagisawa.	019-688-4872
3-2	Takizawa daiji junior high school	Part of Minamippongi.	019-688-4907
3-3	Takizawa east primary school	Part of Kitaiyagawa.	019-688-6602
3-4	Takizawa daiji primary school	Part of Motomurakita.	019-688-4002
3-5	Takizawa primary school	Part of Motomurakita.	019-687-2314
3-6	Takizawa junior high school	Part of Motomurakita.	019-684-1771
3-7	Takizawa VII. General Park Gym	Part of Ubayashi. Part of Ukaiminami. Part of Motomuraminami. Part of Motomurakita.	019-687-3311

No.	Evacuation Center	Covered Area	TEL
4-1	Ohdai Community Center	Part of Ohdai.	019-682-0075
4-2	Matsunai Community Center	Part of Matsunai.	019-682-0989
4-3	Kobukuro Natsunagi Community Center	Part of Kobukuronatsunagi.	019-682-2830
4-4	Kariya Women's Home	Part of 3 Oide.	019-683-1771
4-5	Tamayama VII. Culture Hall	2 Oide. Part of 1 Oide.	019-683-3526
4-6	Shibutani Primary School	Part of Shimodakawasaki.	019-683-2254
4-7	Tamayama VII. General Welfare Center	Part of Yamada.	019-683-2743
4-8	Shibutani ekimae Community Center	Part of 1 Funata.	019-683-1663
4-9	Youth Activity Center	4 Oide.	019-685-2009

No.	Evacuation Center	Covered Area	TEL
5-1	Dendou Community Center	Kawamae. Part of Yakushi.	0195-76-2521
5-2	Nishine junior high school	Minamihirakasa.	0195-76-3530
5-3	Ohbuke Community Center	Part of Matsukawa.	0195-76-4069
5-4	Ohbuke primary school	Part of Matsukawa. Takami. Part of Gohyakumori.	0195-76-2239
5-5	Townspople Gym	Kamihirakasa. Nakahirakasa.	0195-76-4141
5-6	Tairadate Community Center	Shimohirakasa.	0195-74-2040
5-7	Tairadate high school	Nakamura. Part of Mahamatsu. Part of Higashi. Part of Ohkubo.	0195-74-2610
5-8	Higashi Ohbuke primary school	Part of Sango. Part of Okamura.	0195-75-0382
5-9	Shibukawa primary school	Part of Kitamura.	0195-76-2336
5-10	Tairadate primary school	Part of Tategishi.	0195-74-2216

No.	Evacuation Center	Covered Area	TEL
6-1	Kashiwada primary school	Kanazawa. Hot spring resort in Hachimantai. Kamiyuki. Kariya. Part of Kashiwada.	0195-78-2003
6-2	Yoriki primary school	Shiohino. Sakiguchi. Nakagori.	0195-76-3498
6-3	Matsuo junior high school	Tateishi. Shinden. Kitayuki.	0195-76-4650
6-4	Matsuo VII. Community Center	Tateishi. Shinden. Kitayuki.	0195-76-3235
6-5	Matsuo VII. Martial Arts Gym	Tateishi. Shinden. Kitayuki.	0195-76-3235
6-6	Matsuo VII. Gym	Tateishi. Shinden. Kitayuki.	0195-76-3237
6-7	Matsuno primary school	Yamamichi. Tanaka. Uwamura. Moriko.	0195-74-3310

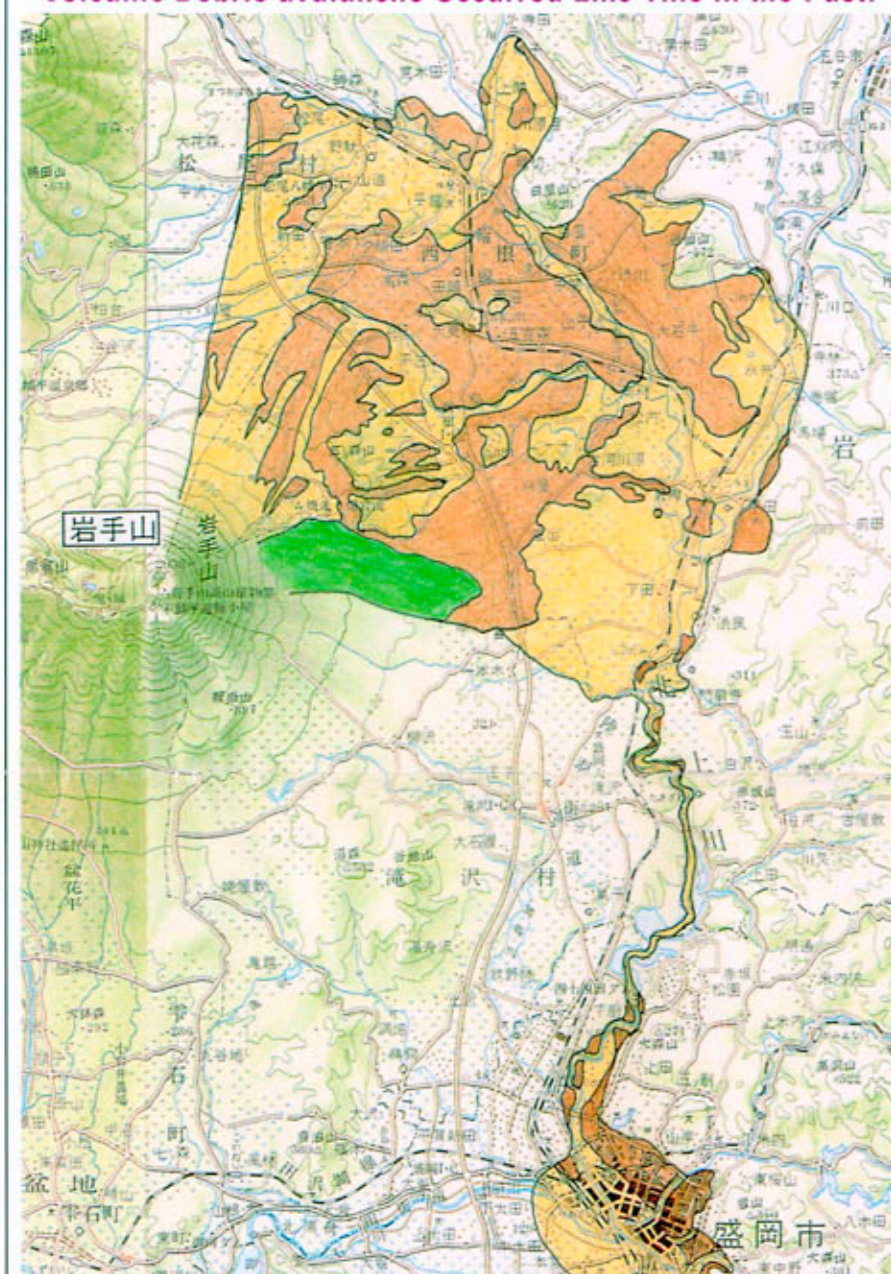
[Preparation for Eruption]

It is important to be ready for a possible evacuation. Check your goods (in backpack(s)), the evacuation center's name and other necessary addresses and phone numbers.

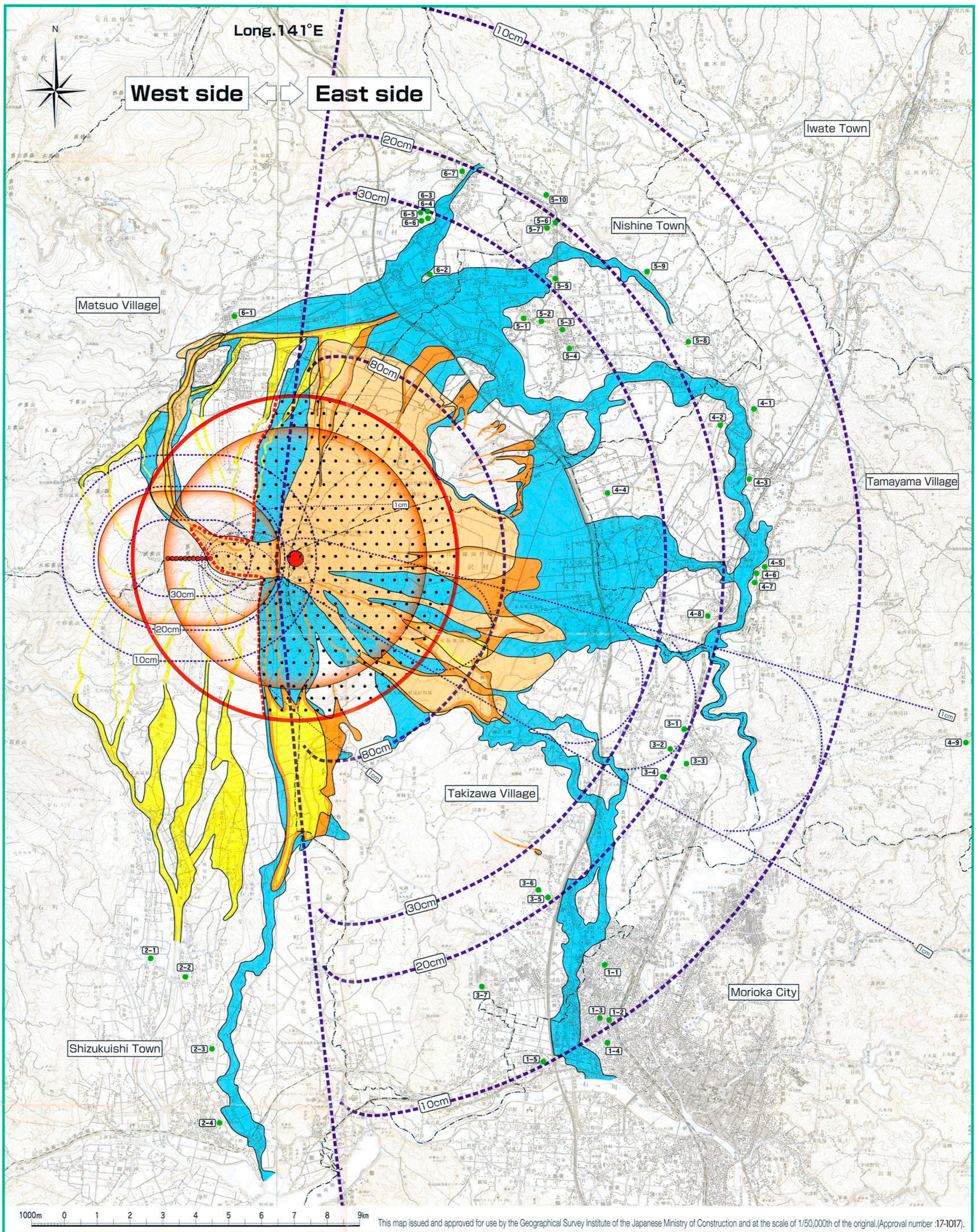
- helmet (head covering)
- cold weather clothing
- change of underwear
- mask
- towel
- radio
- gloves
- tissues
- flashlight
- goggles
- emergency food rations
- water for drinking and cooking
- household medicines
- valuables and cash
- raincoat or umbrella

Our evacuation center is

Volcanic Debris avalanche Occurred Like This in the Past.



6,000 years ago a volcanic phenomenon called a "debris avalanche" occurred on top of Mt. Iwate. This phenomenon caused a large scale debris avalanche that extended as far as Teraida, Nishine Town and Morioka City. During 915 A.D. - 1686 there was a similar debris avalanche, but on a smaller scale. Research Data : Doi (1991), Doi, Oishi, Yoshida (1991), Doi(1994)



Evacuation Center	Supposed Crater	Ballistic Ejecta (Flying Rock)	ash fall	Pyroclastic Flow	Pyroclastic Surge (Blast)	Lava Flow	Debris Flow	Volcanic Mudflow
West side East side	West side East side	West side East side	West side East side	East side	East side	East side	West side East side	East side
	Likely positions of crater	Cinder fall hazard area	Thickness of volcanic ash deposits (cm)	Pyroclastic flow hazard area	Pyroclastic surge hazard area	Lava flow hazard area	Valleys of highly probable volcanic landslide and the extent of its accumulation	Volcanic mudflow hazard area in the event of pyroclastic flow when snow accumulates

※ The direction of each phenomenon can shift according to the wind direction and the topology. Therefore it cannot be predicted exactly as the map shows.

October 1998 Supervisory Body: The Counter-measures Investigation Committee on Volcanic Disasters at Mt. Iwate
Available At: Iwate Work Office Tohoku Regional Construction Bureau Ministry of Construction · Iwate Prefectural Government · Morioka City Office Shizukuishi Town Office · Nishine Town Office · Takizawa Village Office · Matsuo Village Office · Tamayama Village Office

For inquiries regarding this Map

Iwate Work Office Tohoku Regional Construction Bureau Ministry of Construction
Tel: 019-624-3131 (Flood Forecast Division)
Iwate Prefecture
Tel: 019-651-3111 (Fire and Disaster Prevention Division / Sediment Control Division)
Morioka City
Tel: 019-651-4111 (Fire and Disaster Prevention Division)
Shizukuishi Town
Tel: 019-692-2111 (General Affairs Division)
Nishine Town
Tel: 0195-76-2111 (General Affairs Division)
Takizawa Village
Tel: 019-684-2111 (General Affairs Division)
Matsuo Village
Tel: 0195-74-2111 (General Affairs Division)
Tamayama Village
Tel: 019-683-2111 (General Affairs Division)