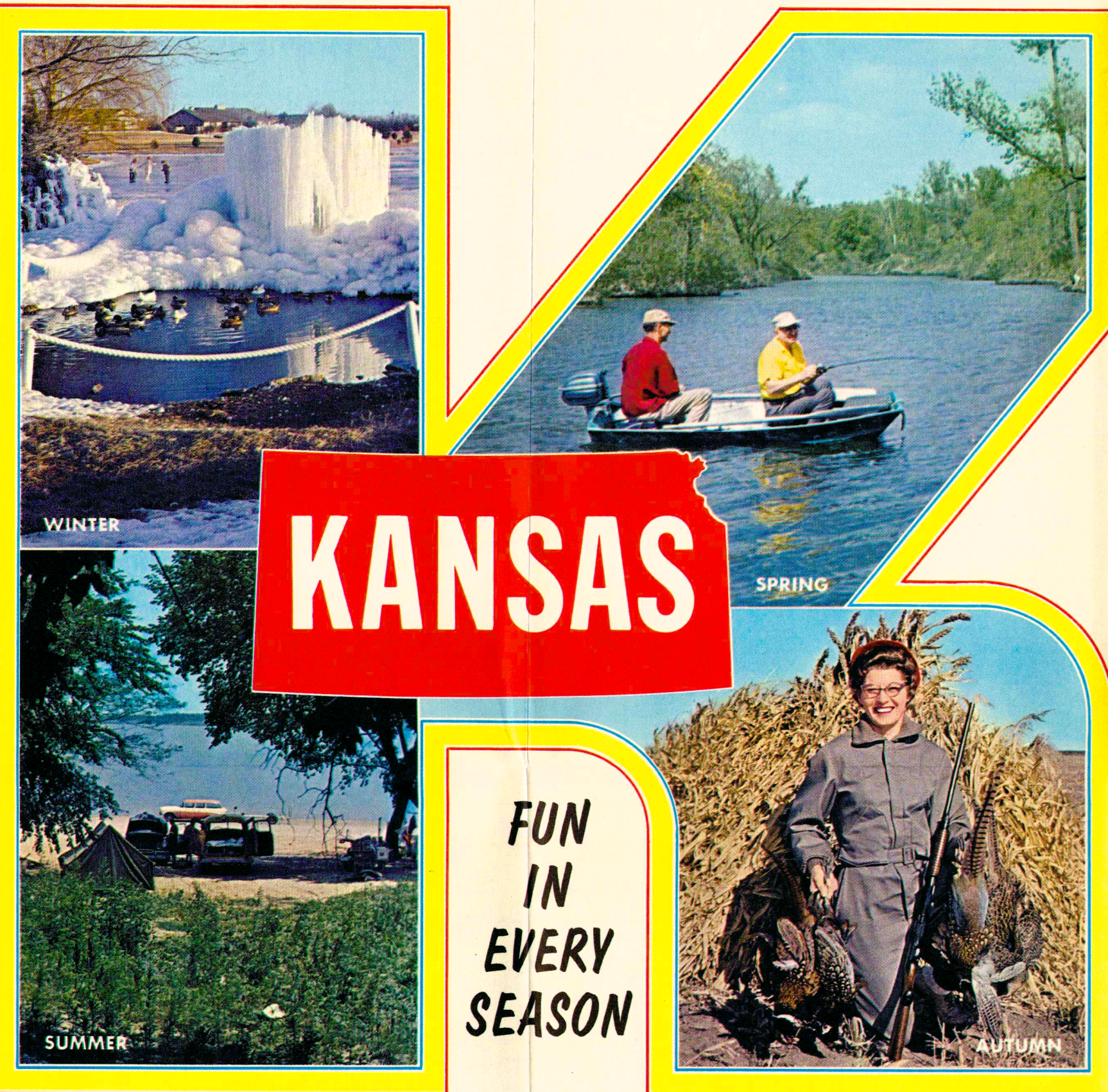
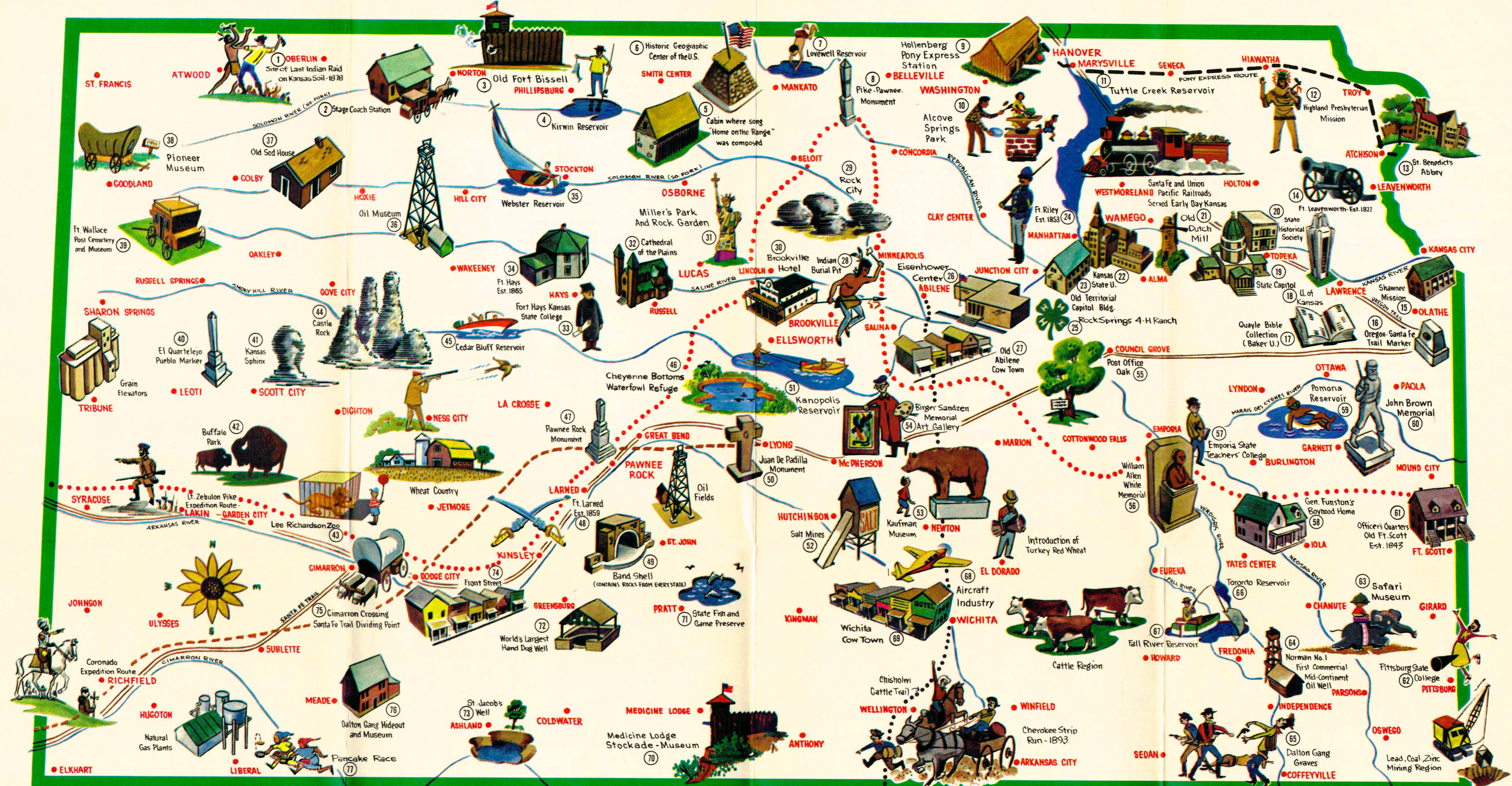


# Take a Look at

# KANSAS - MIDWAY USA - KANSAS

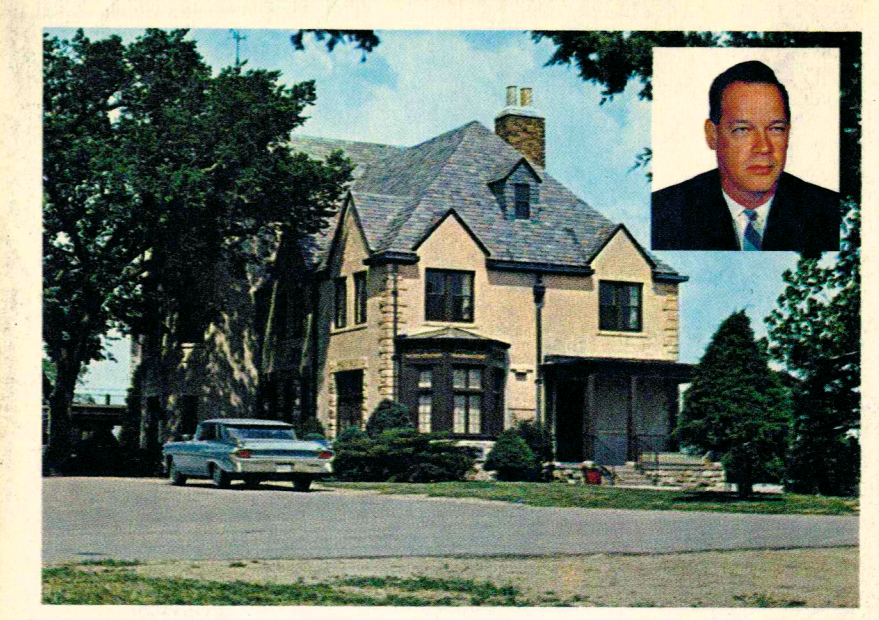
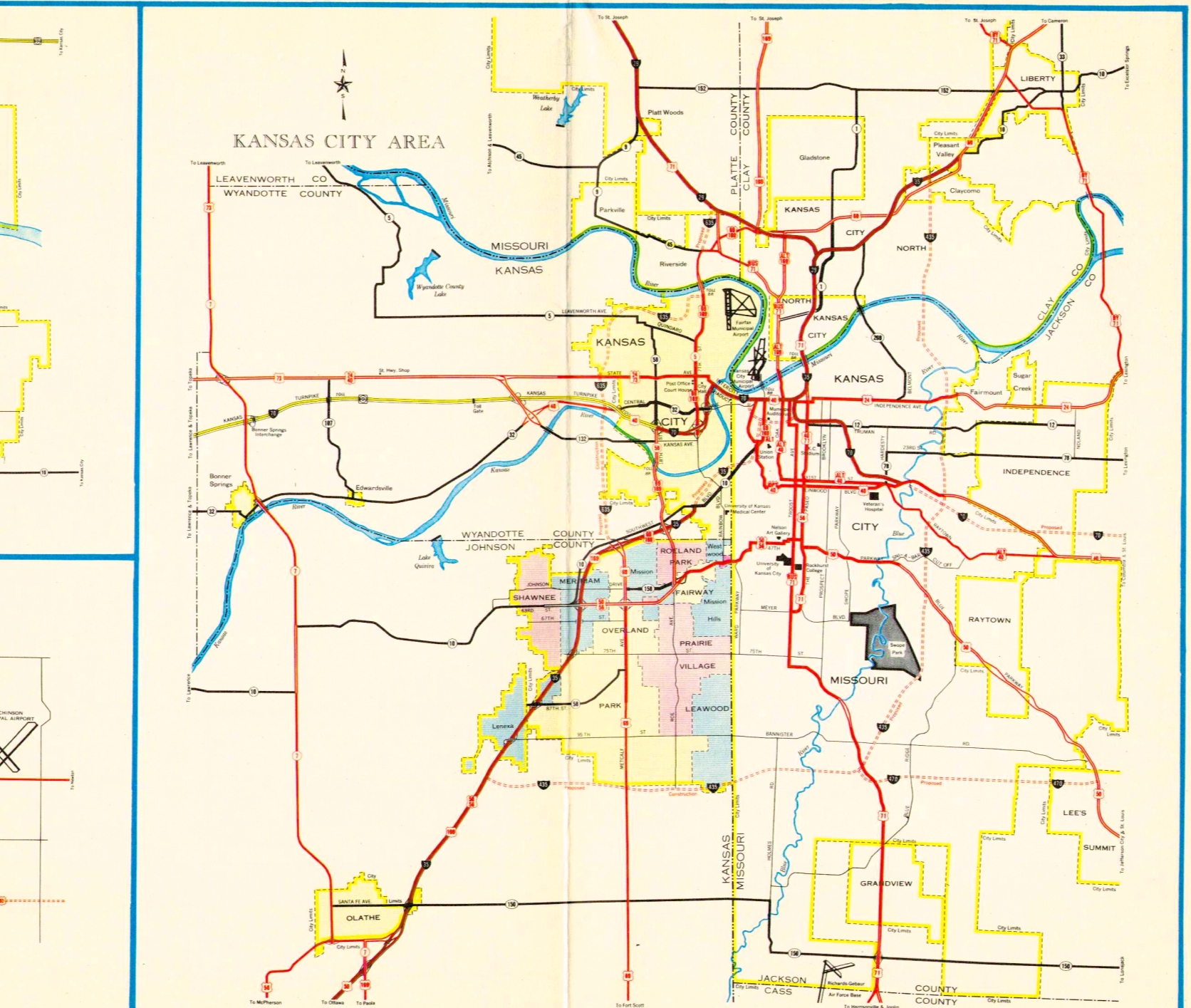
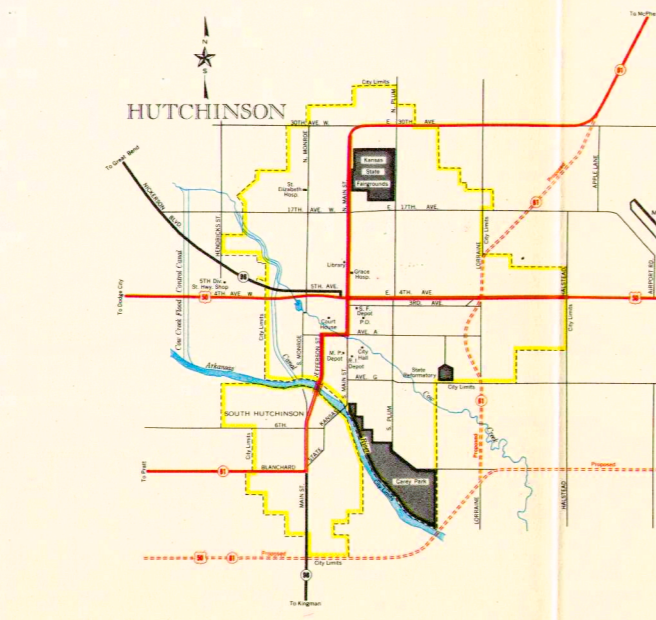
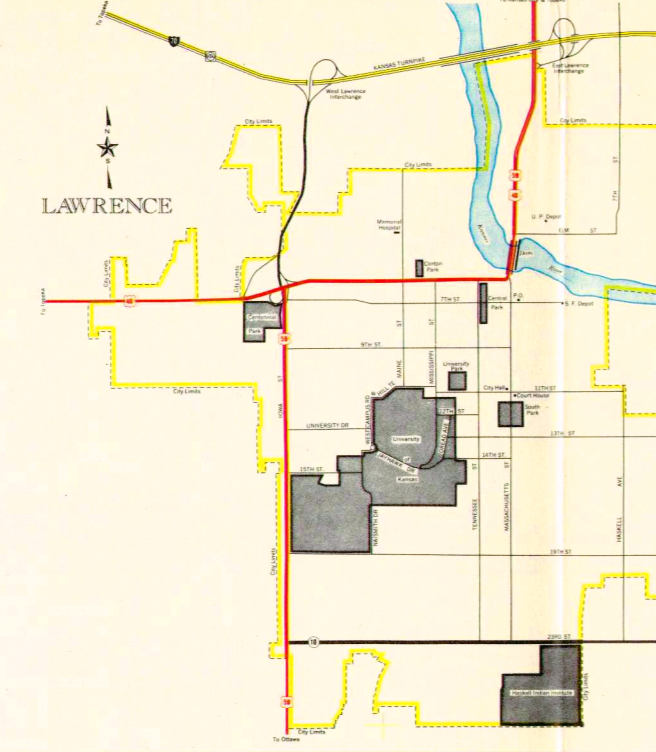
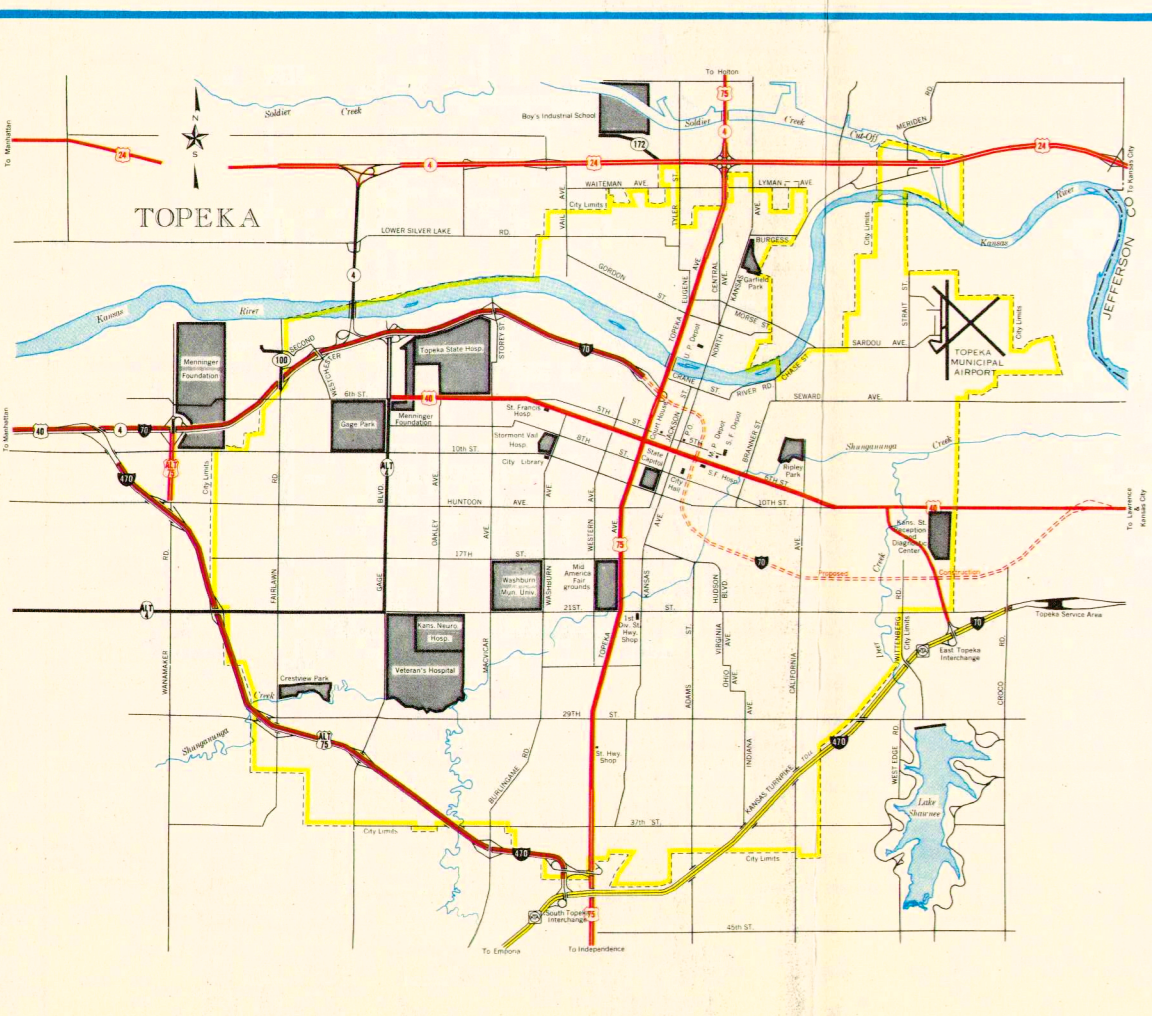
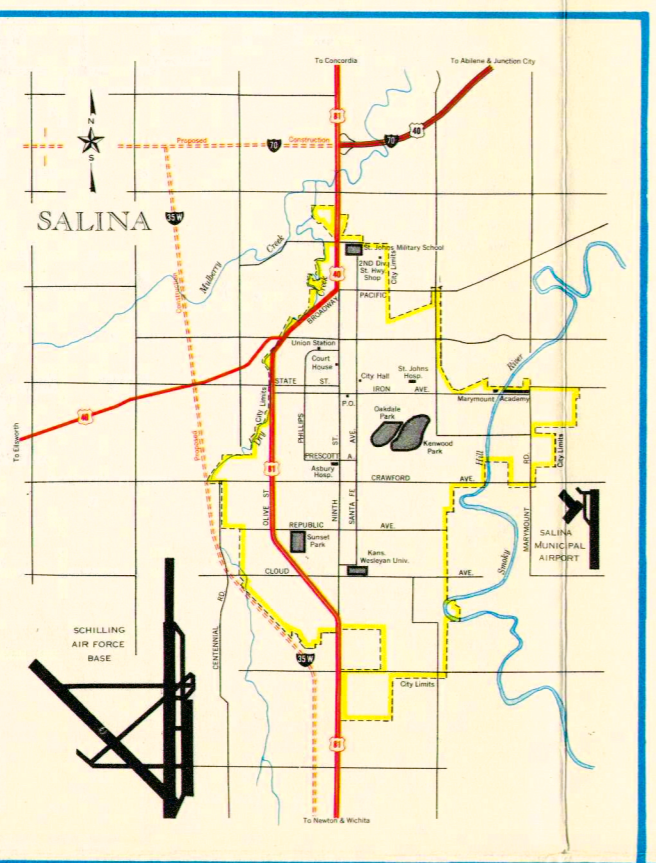
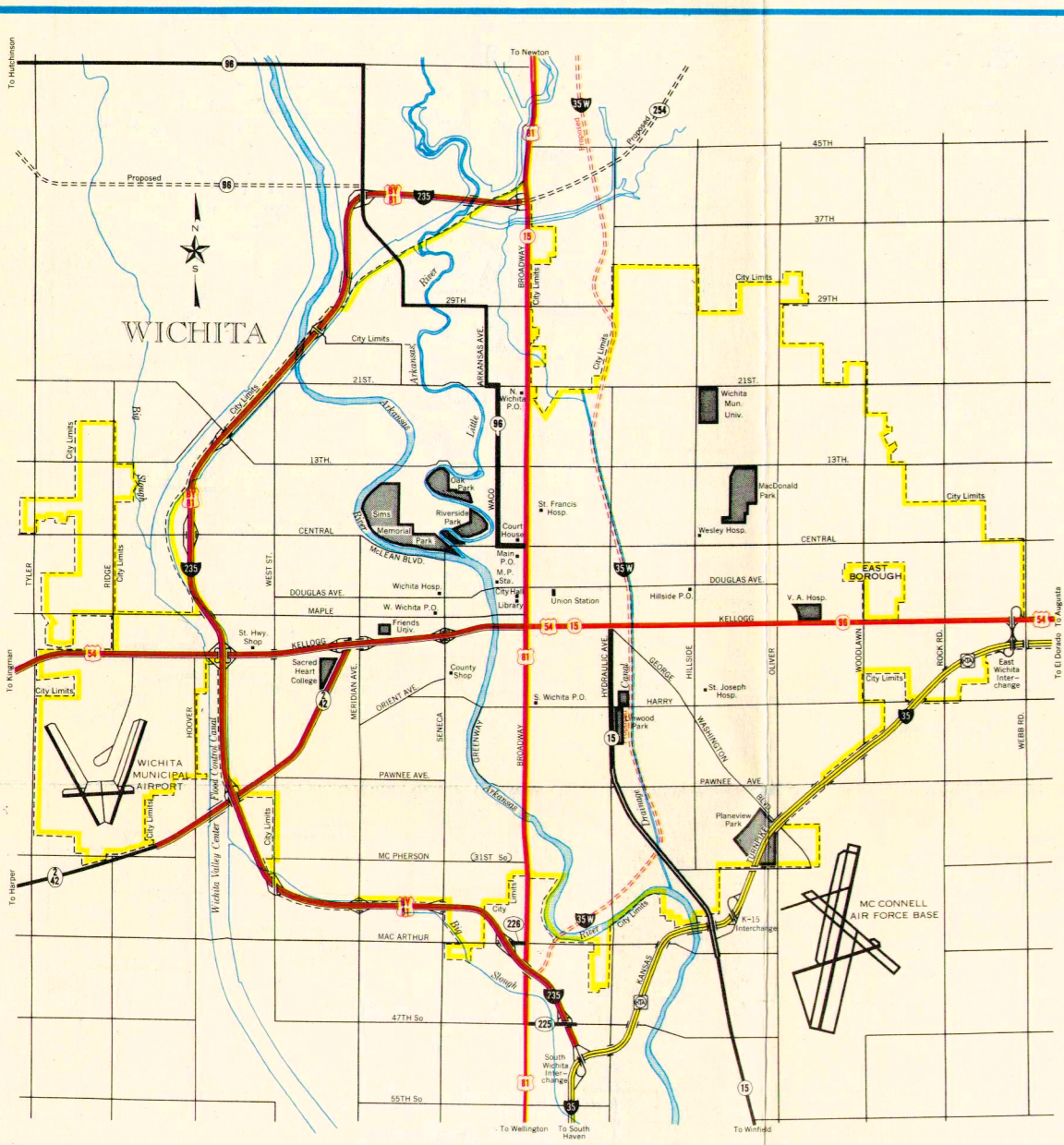


**FUN IN EVERY SEASON**



## OUTSTANDING ATTRACTIONS YOURS TO ENJOY

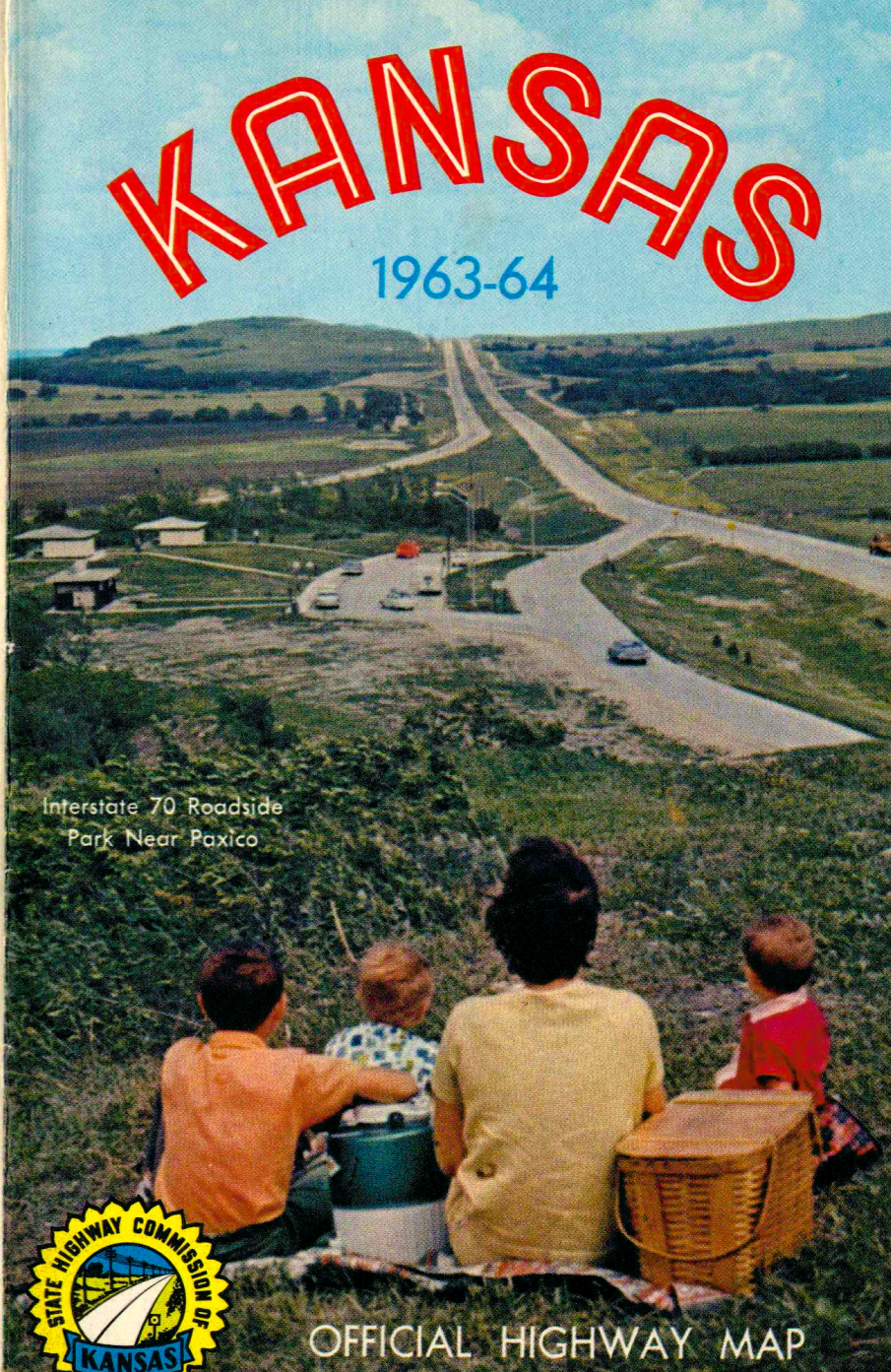
1. Site of the Last Indian Raid on Kansas Soil—In City of Oberlin (US-36 and US-83).
2. Stage Coach Station No. 15—In City of Norton (US-36 and US-283).
3. Old Fort Bissell—In City of Phillipsburg (US-36 and US-183).
4. Kirwin Reservoir—Five Miles South of Phillipsburg on K-9.
5. Cabin Where Song "Home on the Range" Was Composed—Seventeen Miles Northwest of Smith Center, Near K-8.
6. Historic Geographic Center of United States—On K-191 North of Lebanon.
7. Lovell Reservoir—In Jewell County, 15 Miles Northeast of Mankato via US-36 or K-14 and County Highways.
8. Pike-Pawnee Monument—Two Miles Southwest of Republic on County Highways Between US-81 and K-14.
9. Hollenberg Pony Express Station and Museum—Two Miles Northwest of Hanover on K-243.
10. Alcove Springs Park—Four Miles North of Blue Rapids via US-77 and County Highway.
11. Tuttle Creek Reservoir and State Park—Four Miles North of Manhattan on K-13.
12. Highland Presbyterian Mission—Two Miles East of Highland on K-136.
13. St. Benedict's Abbey—In City of Atchison (US-73, US-59, K-4, and K-7).
14. Ft. Leavenworth—Five Miles North of Leavenworth on US-73.
15. Shawnee Methodist Mission—In Fairway (Kansas City, Kansas) Near US-56.
16. Oregon-Santa Fe Trail Marker—In City of Gardner (Interstate 35 and US-56).
17. Quayle Bible Collection—At Baker University in City of Baldwin (US-56).
18. University of Kansas—In City of Lawrence (Turnpike, US-24 and US-59).
19. State Capitol Building—In City of Topeka.
20. Kansas Historical Society Museum and Headquarters—In City of Topeka.
21. Old Dutch Mill—In City of Wamego (US-24 and K-99).
22. Kansas State University—In City of Manhattan (US-24, K-13 and K-18).
23. Old Territorial Capitol Building and Museum—Three Miles Northeast of Junction City (at Fort Riley) on K-18.
24. Fort Riley—Two Miles Northeast of Junction City on K-18.
25. Rock Springs 4-H Ranch—Thirteen Miles South of Junction City via US-77 and K-137.
26. Eisenhower Center (Museum, Boyhood Home and Library)—In City of Abilene (Interstate 70 and K-15).
27. Old Abilene Cow Town—In City of Abilene (Interstate 70 and K-15).
28. Indian Burial Pit—Six Miles East of Salina via Interstate 70 and County Highway.
29. Rock City—Two and one-half miles south of Minneapolis on K-106.
30. Historic Brookville Hotel—In City of Brookville, 17 miles west of Salina on US-40.
31. Miller's Park and Rock Garden—In City of Lucas (K-18).
32. Cathedral of the Plains—In City of Victoria (US-40).
33. Fort Hays Kansas State College—In City of Hays (US-40 and US-183).
34. Fort Hays Blackhouse and Museum—In City of Hays (US-40 and US-183).
35. Webster Reservoir—Eight Miles West of Stockton on US-24.
36. Oil Museum—In City of Hill City (US-24 and US-283).
37. Sod House—In City of Colby (US-24 and K-25).
38. Pioneer Museum—In City of Goodland (US-24 and K-27).
39. Fort Wallace Post Cemetery and Museum—In City of Wallace, Nine Miles East of Sharon Springs on US-40.
40. El Quartejeo Pueblo Marker—In Scott County State Park, Ten Miles North of Scott City via US-83 and County Highway.
41. Kansas Sphinx—Twenty-five Miles South of Oakley Near US-83.
42. Buffalo Park—One Mile South of Garden City on US-83.
43. Lee Richardson Zoo and Finner Park—In City of Garden City (US-50 and US-83).
44. Castle Rock—Twenty-two Miles South of Interstate 70 and US-40 at Quinter on County Highway.
45. Pawnee Rock Monument—Thirteen Miles Southwest of Great Bend on US-56.
46. Fort Larned—Six Miles West of Larned via US-156 and K-242.
47. Band Shell (Containing Rocks from Every State)—In City of Macksville, 26 Miles East of Kinsley on US-50.
48. Juan De Padilla Monument—Four Miles West of Lyons on US-56.
49. Kanopolis Reservoir and State Park—On K-141, 35 Miles Southwest of Salina.
50. Salt Mines—In City of Hutchinson (US-50, K-61 and K-96).
51. Kaufman Museum—On Bethel College Campus in North Newton (Interstate 35W and K-15).
52. Bigler Sandeen Memorial Art Gallery—On Bethel College Campus in City of Lindsborg (US-81 and K-4).
53. Post Office Oak—In City of Council Grove (US-56 and K-13).
54. William Allen White Memorial—In City of Emporia (Turnpike and US-50).
55. Emporia State Teachers' College—In City of Emporia (Turnpike and US-50).
56. Gen. Funston's Boyhood Home—Four and one-half Miles North of Iola on US-59.
57. Pomona Reservoir and State Park—Four Miles North of Lyndon on US-75.
58. John Brown Memorial—In City of Osawatomie, 30 Miles South of Olathe on US-169.
59. Officers Quarters, Old Ft. Scott—In City of Fort Scott (US-69 and US-54).
60. Pittsburg State College—In City of Pittsburg (US-69).
61. Safari Museum—In City of Chanute (US-169 and K-37).
62. Norman No. 1, First Commercial Mid-Continent Oil Well—West Edge City of Neodesha (US-73).
63. Dalton Gang Graves and Museum—In City of Coffeyville (US-169 and US-166).
64. Toronto Reservoir and State Park—Fifteen Miles Southwest of Yates Center via US-54 and K-105.
65. Fall River Reservoir and State Park—Twenty-five Miles Southeast of Eureka on K-96.
66. Aircraft Industry (Air Capital of the World)—In City of Wichita.
67. Wichita Cow Town—In City of Wichita.
68. Medicine Lodge Stockade and Museum—In City of Medicine Lodge (US-160 and US-281).
69. State Fish and Game Preserve, Hatchery and Headquarters—Two Miles South-east of Pratt on K-64.
70. World's Largest Hand Dug Well—In City of Greensburg (US-54).
71. St. Jacob's Well—Thirteen Miles West of Ashland Near US-160.
72. Front Street Replica and Boot Hill Museum—In City of Dodge City (US-50, US-56 and US-283).
73. Cimarron Crossing of Santa Fe Trail—Four Miles West of Cimarron on US-50.
74. Dalton Gang Hideout—In City of Meade on US-54.
75. Pancake Race—Annual Event in City of Liberal on Shrove Tuesday (US-54 and US-83).



Cedar Crest (Governor's Mansion)—Topeka

Welcome to Kansas—Midway U. S. A.  
 Rich in history, you will find that Kansas offers an abundance of natural beauty and outstanding recreational facilities to make your trip a memorable occasion.  
 Our modern highways lead to many historic sites, museums, parks, streams and lakes, and are dotted with some of the nation's finest roadside parks. All are yours to enjoy.  
 We hope this map will add to your traveling pleasure. Please drive carefully and come back to Kansas.

Sincerely,  
**JOHN ANDERSON, JR.**  
 Governor of Kansas  
**STATE HIGHWAY COMMISSION OF KANSAS**  
 ADDISON H. MESCHKE, Director of Highways  
 WALTER JOHNSON, State Highway Engineer  
**COMMISSIONERS**  
 George W. Gogel, Lenexa  
 J. Rex Duwe, Lucas  
 W. W. Frizell, Larned  
 John A. Erickson, Clay Center  
 Ray Shepherd, Fort Scott  
 John A. Hineman, Dighton



**KANSAS**  
 1963-64  
 OFFICIAL HIGHWAY MAP  
 For Free Distribution