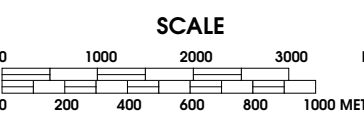


# CITY OF GREAT BEND

BARTON COUNTY KANSAS  
T 19 S, T 20 S, R 13 E, R 14 E

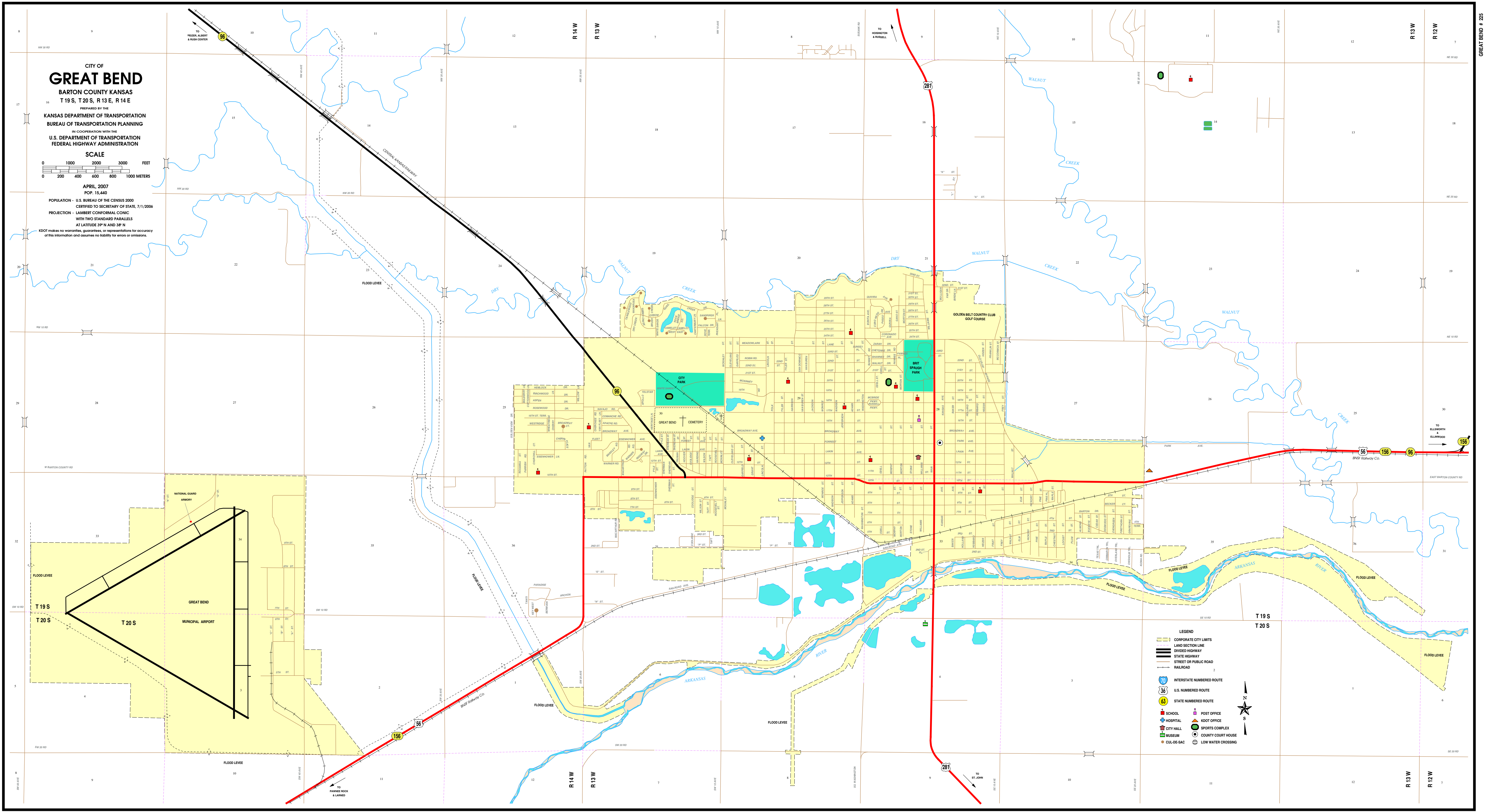
PREPARED BY THE  
KANSAS DEPARTMENT OF TRANSPORTATION  
BUREAU OF TRANSPORTATION PLANNING  
IN COOPERATION WITH THE  
U.S. DEPARTMENT OF TRANSPORTATION  
FEDERAL HIGHWAY ADMINISTRATION



APRIL 2007  
POP. 15,440

POPULATION - U.S. BUREAU OF THE CENSUS 2000  
CERTIFIED TO SECRETARY OF STATE, 7/1/2006  
PROJECTION - LAMBERT CONFORMAL CONIC  
WITH TWO STANDARD PARALLELS  
AT LATITUDE 39° N AND 38° N

KDOT makes no warranties, guarantees, or representations for accuracy  
of this information and assumes no liability for errors or omissions.



- LEGEND
- CORPORATE CITY LIMITS
- LAND SECTION LINE
- DIVIDE HIGHWAY
- STATE HIGHWAY
- STREET OR PUBLIC ROAD
- RAILROAD
- INTERSTATE NUMBERED ROUTE
- U.S. NUMBERED ROUTE
- STATE NUMBERED ROUTE
- SCHOOL
- HOSPITAL
- CITY HALL
- MUSEUM
- CUL-DE-SAC
- POST OFFICE
- KDOT OFFICE
- SPORTS COMPLEX
- COUNTY COURT HOUSE
- LOW WATER CROSSING