

St Leonard & St Ethelburga St Leonards-on-Sea Parish Profile



Parish Office: 01424 422189

website: stleonardstethelburga.org.uk

Charity no. 1132025



THE CHURCH
OF ENGLAND



The Diocese
of Chichester

Table of Contents

Mission Statement & Encouragements & Opportunities...	3
Person Profile for Rector.....	4
The Parish.....	5
Churchmanship & Organisation	6
St Leonard’s Church.....	7
St Ethelburga’s Church	9
Children and Youth.....	11
St Leonards Church of England Primary School.....	14
Finance, Magazine, Housegroups and Cameo Club.....	15
The Rectory	16
The Story So Far	18
Wider Church Links	19
In and Around St Leonards	22
Patronage & Useful Websites	23

Mission Statement

Build us up - Send us out

Worship, Ministry, Spiritual Development and Outreach

We believe that our Lord sent out his disciples empowered by the Holy Spirit to declare his wonderful works to the world. We are likewise sent, and every aspect of church life within our community must have this in view.

Services — our services should give opportunity for all to experience God's love and power, to hear his voice and to worship him through traditional and charismatic forms.

Activities — all groupings should be discovering how God wants his salvation to be demonstrated through us and shared with the community.

Personal — we commit ourselves to follow God's direction revealed in his Word and prayer, for ourselves as individuals and the combined church. To pray for our Church leaders and each other, as we all play our God-given part and love one another in the Church's mission to the community.

The joining of the two former parishes was part of this process.

Encouragements and Opportunities

There is a strong sense of the Holy Spirit at work across both fellowships. The lives of individual members have been touched leading to a deeper love of Christ and commitment to His service.

Over the past few years our fellowships have undergone a degree of "pruning" and the ground has been prepared for further change and growth so we can be salt and light to a needy town. Work hitherto has focused on building strong foundations rooted in His word and we are now expecting to build the church on this bedrock of faith. We have begun exploring other styles of worship by visiting 'Fresh Expressions of Church' in this area and are looking for a new leader who can take this forward.

Much work has been done over the past few years to identify individual gifting using 'Three Colours Ministry' and 'On Being a Jerusalem People' as study materials. Members of both fellowships are keen to put their gifts into action and there are huge opportunities for developing outreach in the locality.

We are excited that the sale of the church hall site at St Ethelburga's will release funds for a much needed multi-purpose community space within the church building. Both fellowships are ready to embrace further changes in response to these opportunities.

Person Profile For Rector

Our three priorities as a fellowship are:-

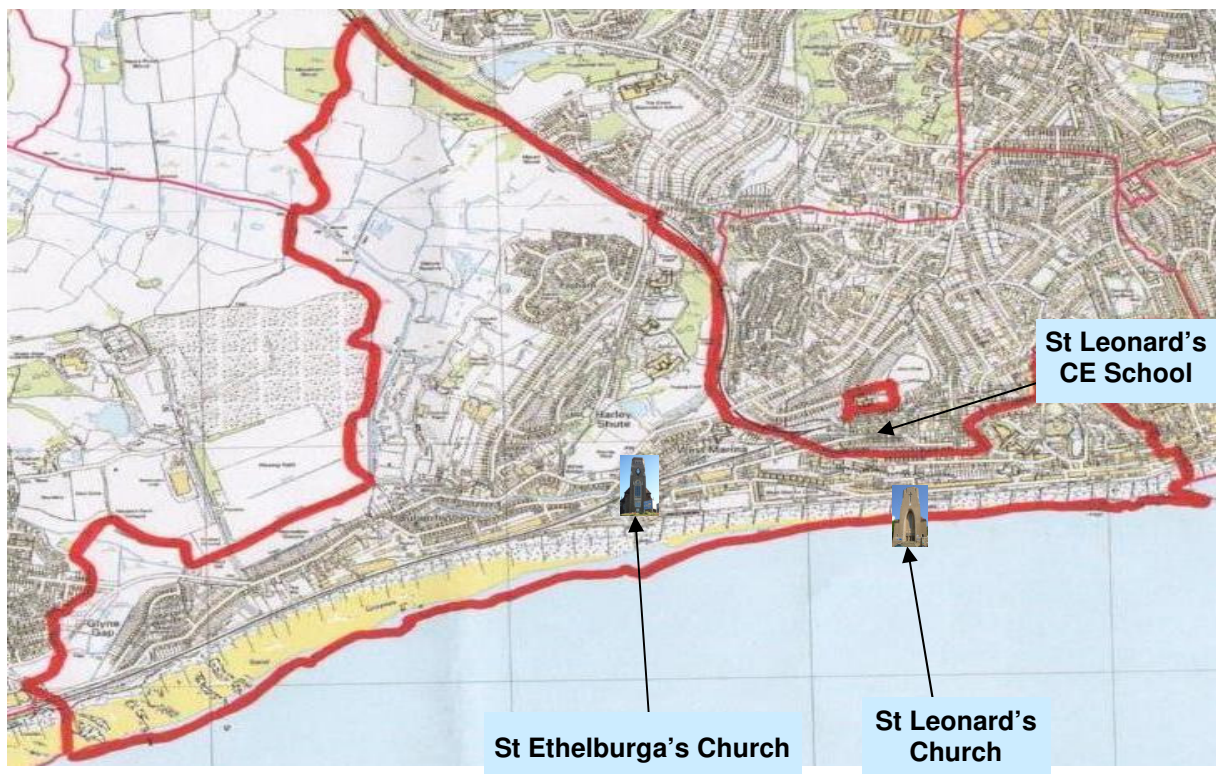
- * Prayer and Clear Vision
- * Discipleship & Mission
- * Pastoral Care

And we would be seeking a Rector who:

- believes that God can bring real revival and that it is the greatest need of both church and nation at this time; can make our prayer and preparation for it a priority;
- is a good communicator and an effective preacher and teacher, in the Word and the Spirit;
- has the vision to give a clear sense of direction in all areas of church life and is ready to delegate;
- identifies those who are gifted, called and anointed for various forms of ministry and gives them opportunity and encouragement, with mentoring and accountability;
- is passionate about developing our children's and youth ministry and as ex-officio Governor will become closely involved with our church school;
- will encourage us to be open to new ideas and opportunities to encounter God; win support for changes rather than imposing them;
- recognises that the life and ministry of these two congregations are part of the coming of the Kingdom of God for ourselves and our town, and will lead us in being 'salt and light' to the community;
- will have proven leadership qualities and be well organised and disciplined, but open always to God's surprises!

The Parish

The Parish extends from part of Central St Leonards to the extreme western end adjoining the boundary with the next town of Bexhill-on-Sea.



United Parish celebration

There was a historic landmark in 2009 with the reunion of the parishes of St Leonard and St Ethelburga. They had been separate for 70 years. It was an economic necessity, in particular the shortage of clergy, which led to the formation of the united parish but it was seen positively by both congregations. There was an air of celebration as members walked together from their respective churches on a lovely autumn evening to meet in Grosvenor Gardens, on the old dividing line.

Both church buildings are in strategic positions. St Leonard's is unique in having a high profile southerly aspect giving an uninterrupted view of the sea. It provides an important navigation landmark for sea farers. St Ethelburga's, on the corner of Filsham Road and St Saviour's Road is strikingly visible from the A259. It is the only church of any denomination in the growing area of West St Leonards, which stretches to the borough boundary at Glyne Gap and inland up the busy Harley Shute Road with its many side roads.

Many of the properties to the east of the parish are of the Victorian era and most along the sea front have been converted to multi-occupancy flats, and several blocks of purpose built flats have been added, together with nursing and rest homes, hotels and sea front shops. The west of the parish, apart from a few light industrial plants, is predominately residential, mostly modest housing with a few flats. There is a 1950s social housing development and an expanding estate of privately-owned homes started in 1980.

The annual **Hastings Half Marathon** starts and finishes in the parish and both churches go out into the street and sing to the runners as they pass.



Churchmanship

The parish of St Leonard and St Ethelburga enjoys the benefit of having two worship centres, but we feel ourselves to be one church.

The church is firmly within the evangelical tradition of the Church of England, but acknowledge those of other traditions and work with them to extend God's kingdom. The teaching and leadership upholds the authority of the Bible as God's Word, and the need for personal conversion.

The church affirms the renewal movement and is charismatic, in that it is open to the exercise of the gifts of the Holy Spirit. In particular a personal ministry of prayer and healing is offered following services and there is opportunity for other gifts to be shared as the Spirit moves. Services of Healing have been held as the main Sunday service.

The two fellowships share this common focus although it is expressed in slightly different styles of worship.

The current Electoral Roll stands at 137, 60 of which are resident in the parish and 77 living outside. Sunday morning attendance across the two congregations averages 107 adults and 21 children.

Organisation

There is a single PCC supported by two Church Committees, an Honorary Assistant Minister and a Parish Administrator.

The Parish is in the Deanery of Hastings and we have three Lay Representatives. The parish population is approximately 6,700.

The Deanery Strategy Group formed a plan to review town-wide mission, reduce clergy posts and thereby reduce Deanery costs. This was put forward and sanctioned by the Bishop's Pastoral Committee and has subsequently been fully implemented in our parish.

St Leonard's Church, Marina, St Leonards-on-Sea



[email: stleonardsparish@hotmail.com](mailto:stleonardsparish@hotmail.com)

The Building

The present St Leonard's Parish Church situated on the seafront at St Leonards-on-Sea was built in the early 1950s to replace a nineteenth century James Burton designed church destroyed by a V1 flying bomb in 1944. The new Grade 2 listed building set into the cliff is very imposing and distinctive and was designed by Giles and Adrian Gilbert Scott with modern stained glass windows by Patrick Reyntiens.

Unusually it faces South and the illuminated cross shaped window in the tower is visible to mariners several miles out to sea. The building has been modified with a large enclosed carpeted area called the Oak Room constructed in the entrance area about 35 years ago. This provides a comfortable area for social events, children's and youth work.

The large nave and chancel of the church feature high elliptical arches leading the eye to the red Cross over the communion table in the marble floored chancel, which is inlaid with images of local sea fish. The oak pulpit in the shape of a Galilean fishing boat and the ship's binnacle lectern all add to the nautical theme. The sloping gallery seating area above the Oak Room has been levelled with wooden flooring and enclosed to create a recreational area at first floor level with two smaller rooms on either side. The old Baptistry has become a small informal meeting room with comfortable seating.

To the side of the ground floor there is a well equipped church office, a flower room and two redundant vestries, which have now been refurbished as the Willow Room and Sycamore Room for use by the Junior Church and Youth team. The side entrance to this area is accessed by a sloping path providing disabled access to the church.

There is a small timber building adjacent to the east side of the church called the Cedar Room, which is used each week by the Junior Church and for other occasional meetings.



Interior of St Leonards

Just before the hurricane of 1987 there was a landslip to the west of the church. When tons of earth were removed a level area was created immediately alongside the church and raking shores were erected both inside and outside of the west wall.

On Christmas Day 2003 there was a fire in the gallery caused by an electrical problem with a light fitting. Damage from smoke and water was extensive and the whole church was covered in soot. Considerable restorative work was needed but the cost was met by the insurers.

Services

10.30 am	1st Sunday	All Age Worship
	2nd Sunday	Holy Communion* (*Prayer 'E' or 'H')
	3rd Sunday	Service of the Word
	4th Sunday	Holy Communion*
	5th Sunday	Holy Communion* or Service of the Word



The services are led by a dedicated music group who strive to lead the sung worship using some of the newer worship songs now available alongside some more traditional hymns with new arrangements. A loyal team of musicians and singers work hard to give the best possible support to the congregation using the new material to praise and worship God in way that speaks in a language, style and content relevant to today's world. We also use the organ to accompany some traditional hymns.

St Ethelburga's Church, St Saviour's Road, St Leonards-on-Sea



email: stethelburga@hotmail.com

The Building

The church was constructed in 1929 and is situated centrally in the recently formed parish of St Leonard and St Ethelburga. The building is traditional in design having elevations of brick and stone beneath a tiled roof. However, the interior of the roof was constructed to resemble that of a traditional Sussex Tithe Barn and this adds to the character of the building. The building has recently undergone a major restoration of the tower which had suffered badly from the use of inappropriate building materials in its original construction. During this process the clock was also given a complete overhaul. For the last 2½ years since its restoration the church building has been much warmer and dryer.

Internally there is a spacious nave flanked by arched columns with aisles to both sides, a central chancel with choir stalls and organ leading to main table and panelled reredos. There is a small chapel to the South side which has been enclosed using glass and can be accessed from either the chancel or the South aisle. The use of stained glass in the church is limited to the main window above the table and those in the chapel. There is a small clergy vestry, a choir vestry and a small lobby and toilet on the North side.

Since the forced closure of the adjacent church hall (which is beyond economical repair) the church has doubled as a community meeting space. This has been helped by the removal of half of the pews to provide a larger, more flexible space. St Ethelburga's church offers the only public meeting place, and is the only worship centre of any denomination in West St Leonards. The privately owned "West St Leonards Community Centre Ltd" occupies some nearby buildings which used to form part of a local primary school. It operates largely as a licensed social club, although the church do hire a space there on Sunday mornings at a nominal rent, and this is where the Junior Church activities take place.

The PCC is currently in the process of selling the church hall site. Part of the monies raised from the sale will go towards essential repairs (new church roof, some window mullions) identified in the last Quinquennial report. The bulk however will be invested in a reordering of the church interior to provide an up-to-date community facility for use throughout the week. Facilities will include a fully functional kitchen, a variety of meeting rooms, improved disabled access, improved toilets, and a large open multi-purpose space. A recent visit by the DAC gave great encouragement for the vision. It is hoped that the present warm and welcoming character of the space can be retained.

The church is prominently situated on a forked road junction and so is flanked on two sides by Filsham Road (a busy trunk road) and St. Saviours Road (residential). Church grounds comprise a “v”-shaped area of grass and cultivated borders to the front (South-West elevation) with sloping grass banks to the pavements, narrow strips of land on both sides, again grassed and some borders, and a grassed bank to the North-East elevation below the church hall site. There is no graveyard associated with the church and the grounds are maintained by a team of volunteers.



Interior of St Ethelburga

Services

Sunday	9.30 am	1st	Holy Communion *
		2nd	Parade Family Service
		3rd	Holy Communion *
		4th	Service of the Word
		5th	Holy Communion* or Service of the Word

*** Common Worship Order 1**

There is a small but enthusiastic choir and the music includes hymns from *Mission Praise* accompanied by the organ. Parade Family services are accompanied by the piano or keyboard.

Children and Youth

St Leonard's

St Leonard's has a thriving and varied children and youth programme led by dedicated teams of volunteers. The children and young people are seen as an important and integral part of the congregation.

On Sunday mornings children and young people join the congregation for a period of worship followed by their own special groups; one for primary-aged children and one for secondary-aged youth. These groups make good use of excellent materials provided by Urban Saints (previously Crusaders). Space is available at the rear of the church for pre-school children during the services with appropriate toys and activities.



Children and young people actively participate in occasional services and special events including drama sketches, singing, worship band and prayers.

For older children and youth there is a weekly youth club called **The Youth Hub** held on Wednesday evenings in term time. The Hub offers a mix of social time, games and activities and this year will develop again a discussion of Christian values and teaching. The Hub attracts a mix of children and young people from church families and others with an average attendance of around 15-20. A more settled team this year means that the team are in a position to encourage our young people to invite friends.



The youth work within the church is supplemented by joining **Spree South East**, an Urban Saints weekend camp, which offers a great opportunity to hear some fantastic Christian teaching, build relationships and try out a wide range of activities. In 2010 the team ran the first **Youth Alpha** course and have been greatly encouraged to see 18 children and young people baptised or confirmed in the last few years.

St Leonard's was one of the founding churches behind the interdenominational **Hastings Youth Event**, which rotates to various churches once a month, featuring a variety of worship, prayers, activities and visiting speakers and attracting up to 50-60 young people. A recent introduction to the local Christian scene the Hastings Youth Event team are also looking to expand this event over the coming year through making contact with other local Christian youth leaders.



St Leonard's youth are actively involved in various community and charitable activities including running and contributing to fun days, community events, children's discos and a wide variety of events run by 1066 Fundraisers raising funds for local charities.

“Reaching today's young people for Jesus Christ and engaging them in effective Christian living”

St Ethelburga's

Sundays: The boys and girls meet at the "Community Centre" and follow activities based on resources from Urban Saints website. There are 7 regular dedicated leaders that run the meetings in pairs (plus 1). This means that we rota on roughly a 4 week basis as we are also involved in a monthly family service. Ages range from 5-14 years and usually we have about 10-12 children involved. We walk to the church towards the end of the services to join in for the communion blessing or to show any artwork, etc to the congregation if time allows.



We are fortunate that many adults now want to show support, by being CRB-checked and signing up for safeguarding courses.

Wednesdays: The need for a mid-week get-together for our Kids Club was realised in Spring 2011 and has been well attended throughout term-time and holidays (maximum of 18 on one occasion) meeting for an hour in the afternoon. We encourage them to start with a prayer or reading in the Side Chapel but it is a time when the children can meet together to socialise. We always have table tennis, snooker and organized activities on offer but they seem, at the moment, to prefer to make their own use of the time together.

This group has planned and carried out events to raise money for charity via the [Hastings Mayor's Challenge](#) project. We have been joint winners in the last two years. This year they have helped run a disco, art competition and pyjama run. The profits will be divided between [Teenage Cancer Trust](#) and the [Parchment Trust](#), which is a local charity for disadvantaged young people.



Disco fun for The Mayor's Challenge



We joined together this year for a very successful [Spree](#) Christian Youth Camp run by Urban Saints in July. We do feel this helped cement friendships between leaders of both groups and increased the faith of all attending. It also made us very proud of all our young believers and excited about future plans. Two girls have been baptised due to Spree and Church School input recently.

Tiddlywinks at St Leonard's



Tiddlywinks Toddler Group meets Mondays in term time. It is a friendly relaxed group for parents and carers with under 5's.

A wide range of toys and activities are available and drinks and a light, healthy lunch are provided. We do not charge a fixed fee, but donations are welcome. This is to ensure that nobody is excluded because of income.



Lunch time

Little Cherubs at St Ethelburga's

Little Cherubs Toddler Group meets every Thursday morning in term time. This is a friendly group of parents, grand-parents, carers and their pre-school children, meeting socially and to encourage their children.



Music time

The toddlers sit around tables for a drink and a healthy snack and later enjoy singing when the musical instruments come out.

Rainbows, Brownies and Guides at St Ethelburga's

Links with uniformed organisations are rare in Hastings & St.Leonards and yet we are privileged to have a Guide company, two Brownies packs and Rainbows meeting regularly in the Church. Once a month there is a Parade Family Service where they are encourage to be involved. We hope soon to introduce a Beavers/ Cubs group.



St Leonard's Church of England Primary School



St Leonard's Church of England Controlled Primary School was built in 1978 to replace one which was in the Parish, and maintains a close association with St Leonard's Church. The building although situated just outside the parish was made an 'enclave' of the parish. There are two church members on the Board of Governors and the Rector is an ex-officio governor. There is a yearly service in church for school leavers, when they are presented with a youth Bible funded by the Barry Coltham Fund, a trust specifically set up for children and young people's work.

Our previous Rector took regular collective worship, and other members of the congregation have been directly involved in school activities such as RE lessons etc.

St Leonard's Church of England School has over 320 pupils on roll with an above average proportion of children eligible for free school meals and special educational needs. Despite the fact that 30% of children in Hastings & St Leonards live in low income households and the town is one of the 10% most deprived local authorities, the school has achieved good results and created a supportive and stimulating environment. The school's motto *Achieve, Believe, Care* encapsulates their ethos.

Achieve – Year 6 Maths and English results in 2009/2010 equate to those in the top 25% of schools with some nearer the top 10%.

Believe – Christian values are central to school life. At the last diocese inspection in September 2010 the inspectors said the school is '*outstanding*' when it comes to how effectively Christian values motivate the relationship between all members of the school community. Themes such as 'Respect', for example, have been used to help resolve conflicts and reinforce the behaviour policy.

Care - The school has a genuine pride in fostering a caring attitude. In the last Ofsted report, September 2010, the inspectors said '*pupils feel safe at school and know who to ask if they have any worries. Care, guidance and support for all pupils are good and particularly so for those pupils whose circumstances make them more vulnerable*'.

Finances

(Please see the PCC Annual Report and Accounts for 2010 attached). Hastings & St Leonards is a recognised area of deprivation and across the Deanery most churches struggle to meet their parish ministry costs.

The two churches look after their own day-to-day finances but are accountable to the PCC with a single set of year end accounts and regular reports throughout the year. There have been some challenging times in the past few years but we are now on a more financially viable footing and have put into place a realistic plan to move forward over the next few years. The PCC are very committed to mission and support the local University Chaplaincy as well as other local and overseas missions.

The parish became a registered charity in October 2009.

Prayer

Both fellowships have a strong prayer focus and weekly meetings for prayer take place in both churches as we realise that without prayer none of our activities can produce fruit.

Home groups



In both fellowships there are well established home groups, meeting at various times, afternoon or evening, on different days to accommodate as many members as possible.

The groups take part in informal study series and at each meeting there is also a sharing of personal news, reports of the needs of others and a time of prayer, as well as refreshments. From time to time there is a shared meal and on occasions the groups join together for an away day – sometimes all the groups study a common theme.

Magazine

The Parish Magazine, (24 page A5 booklet) is published every three months, and is circulated to every home in the parish free of charge. It includes news of the various organisations as well as details of the coming quarter's events and services.

New Cameo Club

(Come And Meet Each Other)

This is a club that meets monthly for fellowship and friendship for Church members over 50. We enjoy outings, meals and talks.



The Rectory



The Rectory is a modern four-bedroom gas centrally heated detached house in its own grounds situated in a residential area just outside the Parish. It comprises a large lounge with patio doors going out onto the garden, dining room, fitted kitchen and separate utility room. There is a good size study by the front door and a downstairs toilet.

Upstairs has four bedrooms, the main one with ensuite and fitted wardrobes, a family bathroom and separate shower.

There is a medium garden mainly laid to lawn with shrubs and a fish pond. A good sized shed and a double garage with off road parking.



Rear view of the Rectory



Study



Lounge



Lounge



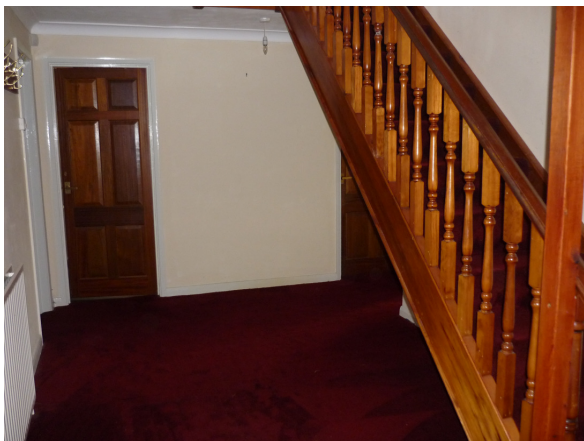
Dining Room



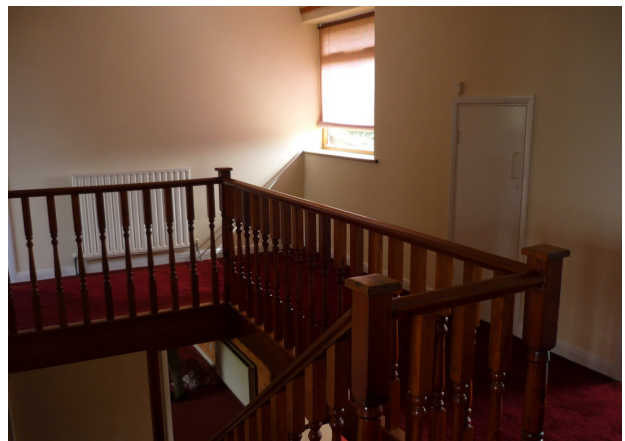
Utility Room



Kitchen



Hall (downstairs)



Hall (upstairs)

The Story So Far

There is a strong sense of the Holy Spirit at work. The lives of individual members having been touched, leading to a deeper love of Christ and commitment to His service.

We were able to be involved in a recent visit by the GSUS Live mobile classrooms to the local secondary schools. GSUS Live is a resource that is available to secondary schools and aims to show that Jesus is relevant today.

www.gsuslive.co.uk

As a parish we delight in opening our buildings on a variety of occasions such as:

- Community Fun Day
- Monthly Coffee mornings
- Heritage Open Day
- Pop Inn—Church open to visitors every Saturday morning
- Concerts

We encourage people to take part in training days, recent ones being:

- Three Colour Ministry — Identifying spiritual gifts
- Freedom in Christ
- Prayer Ministry — team training
- Lay Ministers of Communion
- Youth Training Day
- Healing Prayer

The recent training for Lay Ministers of Communion has increased to 17 the number of laity able to offer Home communion visits. We recognise this as being a vital element of our pastoral care. A larger number of laity are licensed to assist in the giving of holy communion within a church service.

As well as Lay Servers of Holy Communion there is an established team of people able who regularly read lessons and lead intercessory prayer. We employ rotas to ensure that no one person's responsibilities become too great.

We have been encouraged by the number of baptisms and confirmations and many more are anticipated.

Friday Fellowship — in response to a community need a Friday evening social group was started which is now developing a spiritual element.

The spirit of friendship and co-operation between the congregations is a source of strength and encouragement.

We have been encouraged by the development of the links with the church school and would like to see these developed further. Likewise we would want to seek opportunities to work with the other schools in the parish; one Primary School, a newly-formed Academy and a Special Needs School. Historically it has proved difficult to establish a significant presence in these.

As a result of growth we are finding it challenging to meet all the needs. We are especially looking for more people to help with the children and youth.

Wider Church Links

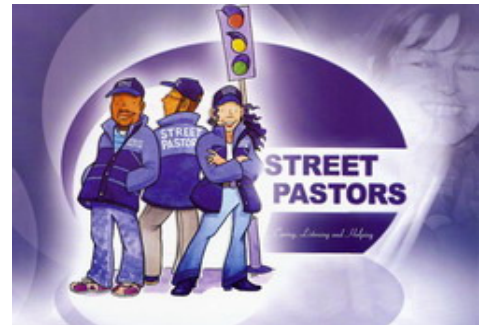


Hastings & St Leonards Church Together

We are 'Church' Together to emphasize the understanding that the Christians of our town are one, although meeting in over 40 separate fellowships. There is an increasing willingness of many in these churches to work together to bring the kingdom into being and we are playing an active part. The current chair and secretary are both members of St Leonard's.

Church Together leads in organizing some cross-town meetings e.g. Week of Prayer for Christian Unity, Global Day of Prayer, Hastings to meet prospective MPs at the last election, and touring productions of Riding Lights Theatre Company.

An increasing number of interchurch ministries are in action across the town. These include Hope Kitchen, providing support for street dwellers and SHADES Theatre company providing local Christian drama. 24/7 Prayer promotes praying for the town and nation and organizes cross-town prayer. Street Pastors, including four members of St Leonard's, have grown rapidly and are out Friday and Saturday nights till 4 am with warm support from Police. Several new ministries are in development – Night Church, an open church in the clubbing area of town across the Street Pastor time; Adopt a Street, promoting prayer for local streets; Olympic Torch involvement across the visit of the Torch to Hastings on 17 July 2012.



We hope that our new Rector will be supportive and prepared to work alongside other ministries in the town.

Churches in St Leonards

On the initiative of the local Roman Catholic priest, clergy and ministers of five churches in St Leonards town met together in 1999 and have continued to meet regularly. A united service is held at Epiphany, and a 'March of Witness' on Good Friday.

Both St Leonard's and St Ethelburga's churches are affiliated with the Evangelical Alliance.

Friends of TREAD



Friends of TREAD charity based in St Leonards is the fundraising and publicity arm of TREAD India Trust (Trinity Rural Educational Association for Development) with six of the eight voluntary trustees either currently or previously attending St Leonards Parish Church and with many supporters amongst the congregation.

The origins trace back to SOMA missions to India from this church in 1993 and 1995, when we met Dr Sounder Raj, who founded TREAD in 2000 with our encouragement and support after a few years of development. We raise awareness of the projects run by TREAD India through promotional events and deal with all the subsequent administration of funds raised, including communicating regularly with its supporters by mail, email, phone and website. The trustees enjoy a close working relationship with their Indian counterparts, making at least one annual trip to India to visit the projects and hold planning meetings with the trustees and staff. TREAD aims to relieve poverty and advance education and health care in rural areas of Andhra Pradesh and Orissa states. Its work is targeted at children, young people and their families and has helped well over 1000 children during the last decade. It is run on Christian foundations but TREAD seeks to help children and young people of any religion or creed .

www.friendssoftread.org

PRIME Partnerships in International Medical Education

Over a billion people worldwide lack access to even the most basic healthcare, often because there are no healthcare workers. PRIME Partnerships in Medical Education is a Christian service charity passionate about improving health worldwide. They are involved in training, envisioning and empowering doctors and other healthcare workers to excellence in practise coupled with compassionate patient-centred care.

One of our PCC members is the Operations Manager for PRIME and another member of our fellowship is shortly to take up post as a volunteer Admin Assistant.

In the last financial year to June 2011 PRIME delivered 55 separate programmes training well over 3,750 individuals in 15 different countries in Europe, Asia & Africa and involving over 74 volunteer tutors, including another fellowship member. Programmes include high level consultancy in GP retraining programmes, undergraduate and postgraduate healthcare education and much more.

For more information about PRIME please visit their website

www.prime-international.org.uk

Rwanda - The Lawrence Barham Memorial Trust

Rwanda, the small African republic in the heart of Africa is slowly recovering from the genocide of 1994. With a strong leader, who is not corrupt and fights corruption vigorously, the country has made giant strides in the last seventeen years.

The capital Kigali is benefiting from investors from all over the world, China, Japan, Saudi Arabia, Libya, Belgium, Germany and UK. New hotels and multi-storey offices are springing up in a city which is clean and well governed.

The Church in its many denominations is welcomed and very active. Unity and reconciliation is taught, not only by the Church, which has this at the heart of its message, but also by the government.

The Lawrence Barham Memorial Trust (charity no. 291459) has been actively working to assist the Church by sponsoring children and students and providing buildings for schools and churches.

The Parish of St Leonard and St Ethelburga has made annual contributions to this Trust and gets regular reports from Bishop Ken and Mrs Jill Barham.

www.lbmt.org.uk



Caring & Sharing East Sussex

www.caringandsharingeastsussex.org.uk



The Caring and Sharing scheme was started in 1982 by the former Bishop of Lewes, Peter Ball. It was based on two ideas: one that by making a small sacrifice members can turn away from the values of the Western world; the other that they can share their comparative wealth by sending the savings from this small sacrifice (e.g. not buying that unnecessary chocolate bar) to projects in poorer countries which help to provide the basic needs of life. The motto is "Live simply that others may simply live."

Since 1982 £2,461,404 has been sent to around 20 projects in as many countries. Money is collected every two months. There is no subscription or commitment and no waste!

www.caringandsharingeastsussex.org.uk

The Leprosy Mission



We actively support the work of both these Missions in prayer and giving.

www.leprosymission.org.uk

Christian Solidarity Worldwide



www.csw.org.uk

In and Around St Leonards



**North Lodge, Gateway to
Burtons St Leonards**

Hastings offers fresh fish direct from the beach-based fishing boats. There is a farmers market every Thursday in the town centre, selling local fresh produce. Hastings and St Leonards are well served with community sporting and leisure facilities.

Hastings and St Leonards is a socially mixed area. There are a good number of primary schools with a mixture of faith and non-faith state schools. There are four large secondary schools — one all-girls school and one all-boys school and two Academies. Hastings is served with sixth form facilities and the University Centre Hastings. The Deanery is fortunate to have two **Schools Workers** and a **University Chaplain**, although funding is being sought to enable the Schools Workers to continue in 2012.

Hospital

The Conquest is a modern district general hospital which has a 24 hour Accident & Emergency department and maternity ward.

Transport

St Leonard's Warrior Square station provides direct main line train services to London Charing Cross, London Victoria, Ashford and Brighton.

The A21 provides road access to the M25 and London. The continent is readily accessible by the Channel Tunnel or by ferry from Dover or Newhaven.

Gatwick Airport is approximately 1½ hours by car or 1¾ hours or less by rail.



Marine Court, St Leonards

James Burton and his son Decimus built St Leonards-on-Sea in the 1820s. It is mainly residential with a long promenade and seafront.

Most employment in the town is in service industries such as the NHS and Civil Service along with tourism.

There are several local shopping areas, five supermarkets, an out-of-town retail park, as well as a modest shopping mall in Hastings.



St Leonard's Gardens



Beach at St Leonards

Patronage

Our Patrons are the Hyndman's Trustees administered by Simeon's Trustees.
The two trusts have patronage responsibility for about 180 parishes throughout England.

The Patron can be contacted via the information below.

Mrs Ann Brown
Simeon's and Hyndman's Trustees
6 Angerford Avenue
Sheffield
S8 9BG

Email: ann.brown@simeon.org.uk
Or ann.brown@hyndmans.org.uk

Telephone: 0114 2558522

Useful Website Addresses

www.diochi.org.uk

www.statistics.gov.uk

www.achurchnearyou.com/parishfinder

www.priorymeadow.com

www.churchestourismassociation.info

www.hastingschurches.org.uk

www.eastsussex.gov.uk/education

www.visit1066country.com

www.eastsussex.gov.uk