

DEPTHS IN METRES

Markers are advised that the Ord River Dam spillway level has been raised by 5.5metres.

# AUSTRALIA — EAST KIMBERLEY LAKE ARGYLE

SCALE 1 : 100 000

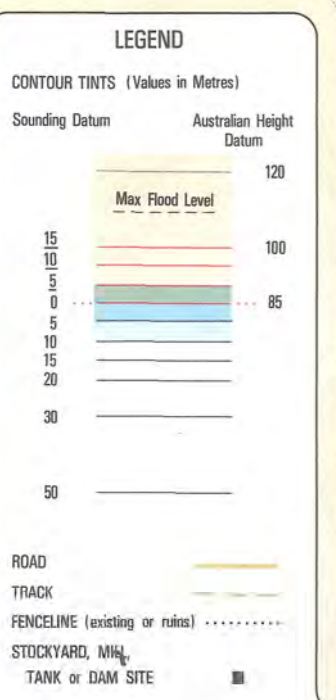
**SOUNDING DATUM:**  
85.0 metres above Australian Height Datum and 123 metres below Spillway Level.  
Water Level Indicator Poles near the dam site ramp indicate heights above Australian Height Datum on the road side of the poles, and heights above Sounding Datum on the lake side of the poles.

**BATHYMETRIC CONTOURS:**  
Shown in red and black, these contours are related to the Sounding Datum of this chart.  
Underlined figures are above Sounding Datum [15 metres red contour = 100 metres A.H.D.].

**TOPOGRAPHIC CONTOURS:**  
Shown in grey, these contours are related to Australian Height Datum.  
Vertical interval = 20 metres.

**WATER SURFACE LEVEL, SHORELINE AND DEPTH DETERMINATION:**  
See lower right corner of chart for details.

- CAUTIONS:**
1. Care must be taken when navigating in these waters as submerged and partially submerged rocks, trees and fences, as well as floating debris may be encountered and could damage your boat. Water clarity limits visual penetration to approximately one metre.
  2. A heavy build-up of cloud will normally precede bad weather and you should seek shelter immediately. Boating on the lake during the Wet season is not recommended. See Weather Synopsis notes.
  3. Always leave your intended route and time of return with a responsible person ashore.



**NAVIGABLE WATERS REGULATIONS**

It is the duty of every person in charge of a vessel to be conversant with the Navigable Waters Regulations and the Collision at Sea Regulations, copies of which are available at the Department of Marine and Fisheries, Western Australian Government and Lake Argyle Tourist Village.

A few of the relevant regulations follow:

- All vessels registered in Western Australia are designated unpowered.
- A responsible vessel in any vessel which is or may be propelled by mechanical power, including such a vessel which is ordinarily propelled by sail only.
- No person under the age of 17 years is allowed to drive or operate a speed boat unless it is in a company vessel under the control of an approved speed boat club.
- A person driving a speed boat towing a water skier shall maintain a constant lookout ahead and the person accompanying him, in the boat, shall maintain a constant watch over the skier or skiers being towed by the boat.
- No person shall re-ignite a vessel in such a manner as to obstruct, impede or interfere with boats or persons proceeding in an overtaken vessel.
- A vessel shall not have control of any vessel, attempt to operate or operate any vessel in any navigable water within the influence of alcohol or drugs to such an extent as to be incapable of having proper control of the vessel.
- All vessels must be equipped with an approved life jacket for each person on board, have not less than two waterproof self-buffing and two non-reusable orange smoke flares, plus an efficient anchor and line. All vessels with inboard motors and all vessels with outboard motors of over 150 kilowatt brakepower (20 h.p.) must be equipped with an approved fire extinguisher.

**LAKE ARGYLE WEATHER SYNOPSIS**

Since continuous warm weather is a feature of the region, the seasons are determined by the presence or absence of rainfall and its associated benefits.

The DRY season (approximately May to October) is characterized by generally mild conditions and clear skies, although some haze may form. Heavy winds may develop from a calm within 15 minutes to give a choppy water surface. This wind generally blows from the SE to SW quarter and may establish itself at night.

The WET season (approximately November to April) is the period of maximum rainfall, which is received from cyclonic depressions and thunderstorms. Generally coming from the west or south-west, these storms occur usually within the season. Rain occurs in short heavy showers averaging 20 mm per wet day and there are increased with fine mist weather. The squally storms are often severe with backing rain and wind causing very rough water conditions and very reduced visibility. Squalls generally develop in the afternoon, however they may occur during the night.

**WARNING**  
Craft should NOT proceed within 1 kilometre of entrance to Spillway

**CAUTION:**  
Floating mats of Aquatic Weed may be encountered in shallow.

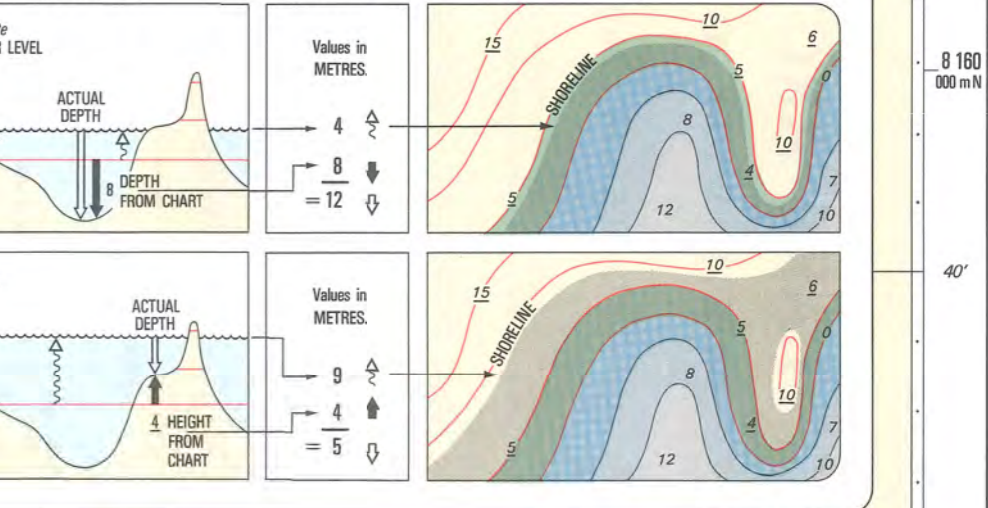
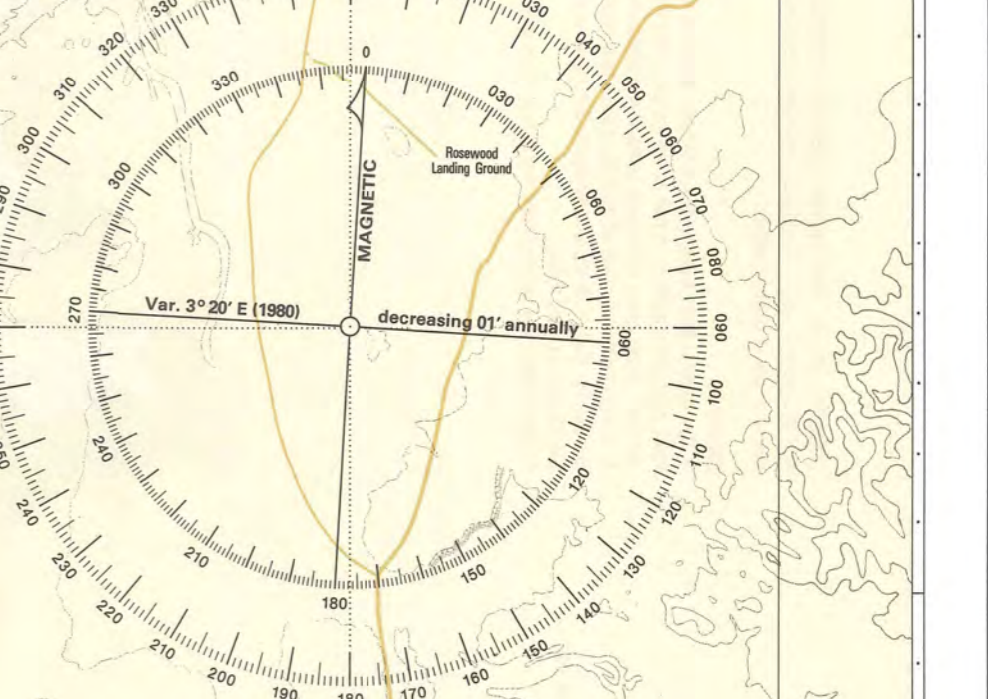
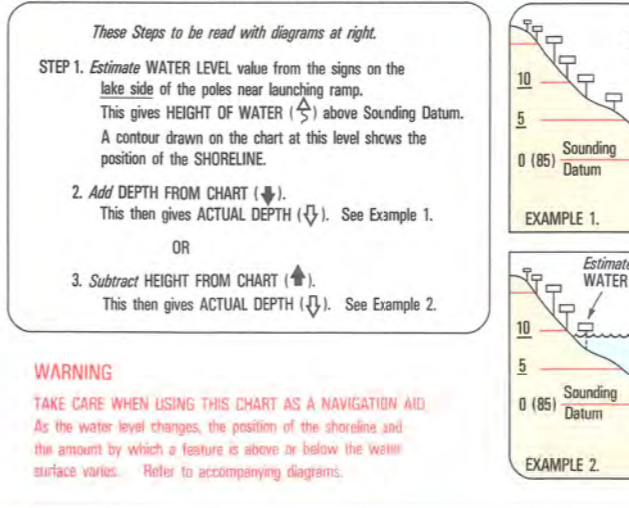
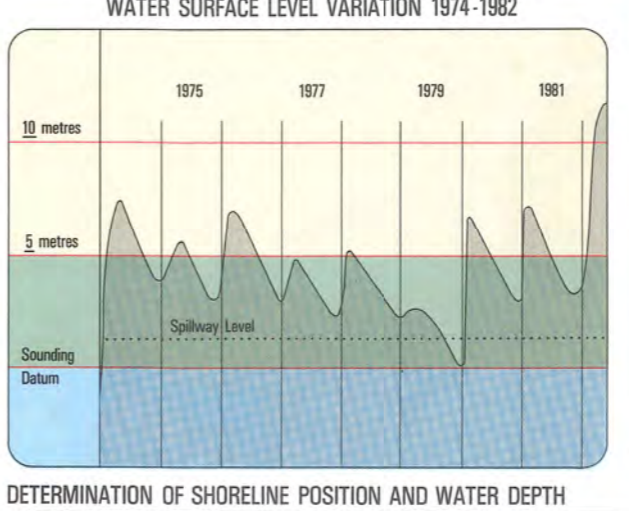
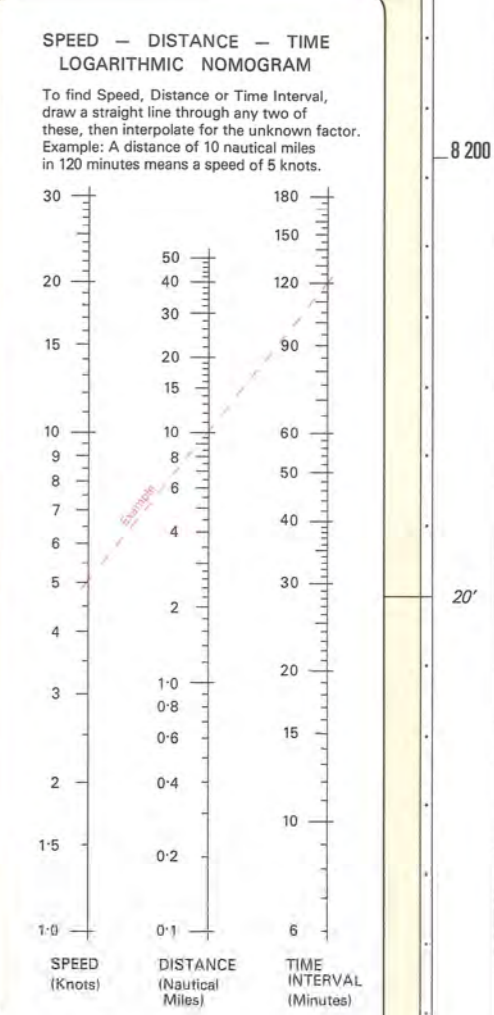
**CAUTION:**  
Floating mats of Aquatic Weed may be encountered in shallow.

**DON'T RUBBISH OUR WATERWAYS**  
Bottles, cans and plastic bags create dangerous hazards to all.

**FISHERIES AND WILDLIFE REGULATIONS**

An Inland FISHERIES License is required by any person over thirteen years of age who wishes to take fish from inland waters of the Kimberley. Another fisheries may only be harvested by means of a single net, rod and line or a single line held in the hand. The use of spearguns, harpoons and all other pointed instruments for capturing fish is prohibited in all inland Western Australian waters. The taking of fish by means of nets is prohibited in the following rivers together with all their tributaries, pools and affluents: Durban, Bood, New, Little Parua, Parua, Nicholson, Olive and Turner Rivers and the Ord River upstream from Carlton Crossings at Australian FALLS, i.e. within and upstream of the following: Parua, Parua, and except dugongs and some venomous frog species, are fully protected by law. They must not be reduced or harmed in any way. The only game which may be taken are some species of ducks during declared open seasons. However, duck shooting is prohibited on Lake Argyle and Lake Kunenurra and all land within 10 kilometres of their shores. Crocodiles, their nests and eggs may not be harmed or disturbed.

Western Australia's FLORA i.e. wildflowers, palms, shrubs, trees, ferns, creepers or vines is protected by law, which prohibits cutting, digging up, tearing or disturbing the plants. Further information may be obtained from the Department of Fisheries and Wildlife, (Wildlife Officer, P.W.D., Perth, W.A., 6150).



**DEVELOPMENT OF LAKE ARGYLE**

In 1875, explorer Alexander Forrest reported on the potential of the fertile Ord River basin. Initial settlement of the region came from eastern Australia, with mobs of cattle being driven overland under conditions of extreme hardship. The Durack family, headed by Patsy Durack, arrived in the area in 1883 and established Argyle, Lissadill and Broomwood Stations. Prior to the formation of the lake, Argyle homestead was dismantled and reconstructed in its present position some 20 kilometres north of where it was originally built by the Duracks in the early 1880s.

The Ord River Project was planned to develop intensive agriculture on some 70 000 hectares of flat plains in the lower Ord valley and extending into the Northern Territory. Stage one of the scheme commenced in 1960 and involved the construction of the Diversion Dam near Kunenurra and the associated irrigation channels. The second stage centred on the construction of the Ord River Dam, 56 kilometres upstream of the Diversion Dam, to provide the major storage reservoir, Lake Argyle.

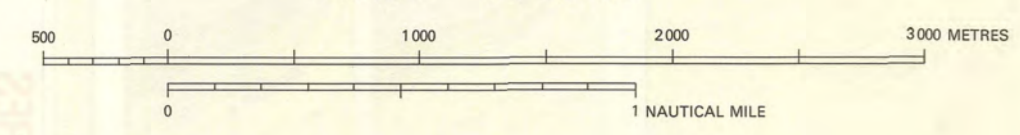
The top of the embankment is approximately 68 metres above the original river level and 1.5 metres in length. In its deepest part the embankment foundation is approximately 10 metres below river level. Some 8 kilometres north-east of the Spillway which consists of an open channel cut through a rock saddle to enable surplus water to be discharged. The Spillway has a bottom width of 12 metres and a length of 2 000 metres. At normal full supply level, Lake Argyle covers an area of 740 square kilometres, which increases to over 2 000 square kilometres during maximum flood. Due to the extent and complexity of the work the construction contract for the Dam extended over three dry seasons.

Markers are advised that the Ord River Dam spillway level has been raised by 5.5metres.



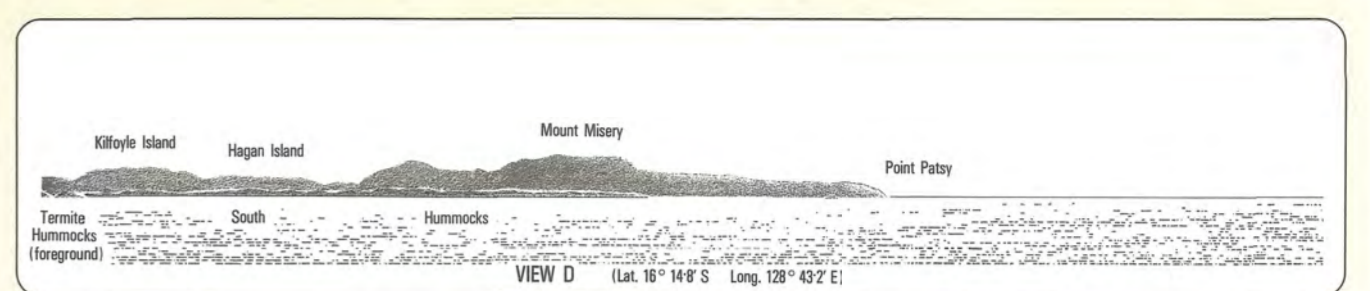
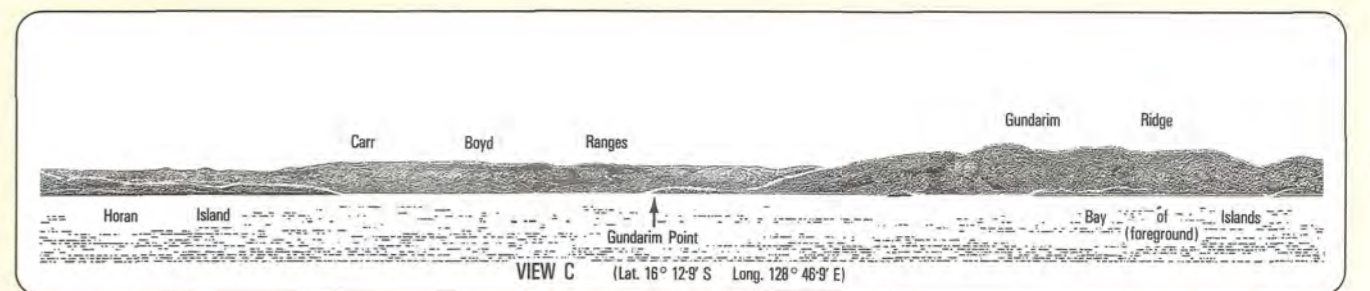
# LAKE ARGYLE NORTH-WEST PORTION

SCALE 1 : 30 000



SOUNDING DATUM, BATHYMETRIC CONTOURS, TOPOGRAPHIC CONTOURS, WATER SURFACE LEVEL, SHORELINE AND DEPTH DETERMINATION: See other side of chart for details.

- CAUTIONS:**
1. Care must be taken when navigating in these waters as submerged and partially submerged rocks, trees and fences, as well as floating debris may be encountered and could damage your boat. Water clarity limits visual penetration to approximately one metre.
  2. A heavy build-up of clod will normally precede bad weather and you should seek shelter immediately. Boating on the lake during the Wet season is not recommended. See Weather Synopsis notes.
  3. Always leave your intended route and time of return with a responsible person ashore.



**LEGEND**

CONTOUR TINTS (Values in Metres)	ROAD
Sounding Datum	TRACK
Australian Height Datum	FENCELINE (existing or raised)
120	STOCKYARD, MILL
100	TANK or DAM SITE
85	
70	
55	
40	
25	
10	

Max Flood Level

**DONT RUBBISH OUR WATERWAYS**  
Bottles, cans and plastic bags create dangerous hazards to all.

**NOTE:** Fences and track detail incomplete. Floating mats of Aquatic Weed may be encountered in shallows.

