

CHRIST CHURCH
Fulwood

PARISH PROFILE

MARCH 2022

"So then, just as you received Christ Jesus as Lord, continue to live your lives in him, rooted and built up in him, strengthened in the faith as you were taught and overflowing with thankfulness"

COLOSSIANS 2:6&7

Contents

1	Introduction	3	4	Outreach ministries	17	7	Finance	25
	Who we are	4		Church Planting	17			
	Where we are	5		Local Bible Training	18			
	Fulwood	6		Ministry Partnership Scheme	18			
				Evangelistic Events	19	8	Governance & Accountability	27
2	Theology	8		Local Community Outreach	20			
				World Mission	21			
			5	Current Leadership & Ministry team	22	9	Personal profile	30
3	Church Family	9		Staff Team	22			
	Sunday Services	9		Lay Leadership	23			
	Church Family Prayer	10		Ministry Trainee Scheme	23	10	A Word from our Bishops	32
	Pastoral Care	10						
	Other Church Family Events	10						
	Midweek Activities	11	6	Buildings	24	11	Conclusion	33

Thank you for considering whether God is calling you to be our next Vicar.

As a church family we are excited about what our gracious God is going to do in the future as we prayerfully seek a new Vicar to lead us forward. We have recently been through testing times, but are anticipating our new Vicar will assist and lead us as we grow in our dependence on our Lord, humbly seeking to deal with some of the difficult issues that have deeply impacted us as a church. We are confident that God in His grace, has the power to restore and heal, and to bring us into a closer relationship with our Lord Jesus Christ.

“

Now to Him who is able to do immeasurably more than all we ask or imagine, according to His power that is at work within us, to Him be glory in the church and in Christ Jesus throughout all generations for ever and ever! Amen.”

EPHESIANS 3 V 20



① Introduction

Who we are

We are an evangelical church family in the South West of Sheffield numbering about 850 adults and 250 youth and children.

There are 600 on the Electoral Roll. We have a strong vision for communicating the Gospel through God's Word, and by living out our faith day to day as His disciples.

We are a parish church seeking to serve our local community. However, the church family is not confined to parish boundaries. The network of relationships through work, leisure and friendships means that the church influence spreads wider than the parish alone. We have many links within the city, the Diocese, and further afield in the UK and abroad. Through the work of individuals and their connections with other institutions, we have a wide spread of gospel opportunities. We are also a multigenerational church family of diverse individuals with a wide range of expectations and preferences, and yet committed to one another in the Lord Jesus Christ.

We are part of the Diocese of Sheffield, with whom we have had positive gospel partnership in recent years, in the planting of several churches.

WHERE ARE WE GOING?

Our vision is to promote the reality and wonder of personally and corporately knowing Christ, and the joy and blessing that this brings. We long to share this amazing good news of God's love and salvation with our parish, our city and the world.

Our current Mission Statement is to 'Plant Churches, Train Leaders, Grow Fulwood'. In God's grace five church plants or grafts have been established over the past few years, and a significant number of people have been trained and pursued Christian ministry. Both these factors have left us with the challenge of encouraging others to step into new roles. Many new members have joined the church in recent years and many others have grown in their commitment to our Lord Jesus Christ, but we fully recognise the external challenges of an increasingly secular culture. As we move forward in faith and humility in our service for the gospel of our Lord Jesus Christ, we would see this being manifest in our church family being united in the love of God, and intentionally reaching out to others.

We are excited about the prospect of making the best use of our newly reordered buildings and facilities for the sharing of the Gospel, the glory of God and extension of his Kingdom.

We are a parish church seeking to serve our local community.

RECENT CHALLENGES

The testing times we have experienced have been the result of:

- the Covid pandemic
- the impact of a Bishops' Visitation and other external reviews into our leadership and church culture
- the physical constraints of our building project

These have resulted in a somewhat divided and disconnected church family. We are, however, confident that our gracious God will help us learn from these experiences, enabling us to:

- Create a more open and transparent culture
- Address hurts
- Learn to communicate better
- Understand the mind of the congregation
- Ensure that any future problems are recognised and acted upon more quickly
- Achieve greater diversity on the staff team

① Introduction

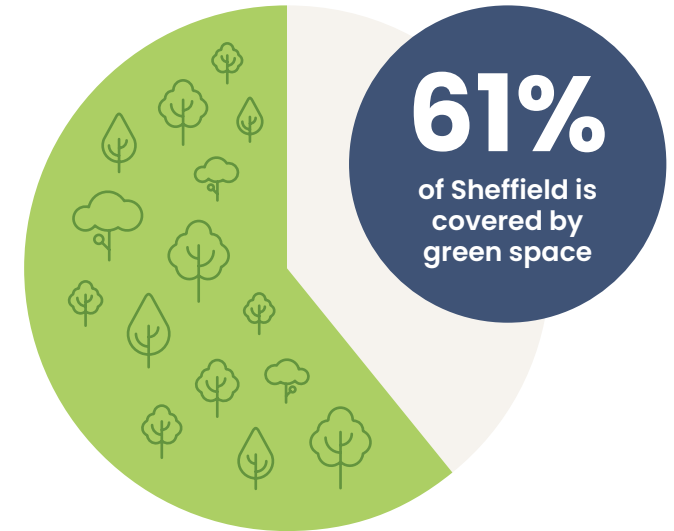
Where we are

Sheffield is one of the most popular places to live in the UK, not least because it is one of our greenest cities, having over 250 public parks and 52 square miles of the stunning Peak District National Park within its boundaries. This green space covers 61% of Sheffield's entire area.

Sheffield, renowned for its knives, has become a 'cutting edge' city in many ways. It has a reputation for expertise, excellence and innovation in areas as disparate as Culture, Education, Sport, Healthcare, Advanced Manufacturing and the Creative and Digital Industry. There is an active cultural scene with two major theatres, the Sheffield City Hall and the Arena as well as a host of smaller venues and organisations. There is also a strong sporting culture within the city, ranging from two Football League clubs and top-flight Ice Hockey, Basketball and Speedway teams, to World Championship Snooker.

Sheffield is an ethnically diverse city, with around 19% of its population from black or minority ethnic groups. The largest of those groups is the Pakistani community, but Sheffield also has large Caribbean, Indian, Bangladeshi, Somali, Yemeni and Chinese communities. There remains a great disparity in wealth and prosperity in different areas of the city – both a spiritual and a humanitarian challenge.

Sheffield remains in the eyes of its people, "the largest village in England" – a place with the character of a small market town and yet the facilities of a modern metropolis. Sheffielders, be it by birth or adoption, are devoted to their city and fiercely loyal. Sheffield is a surprise waiting to be unwrapped. Many people arrive in Sheffield without great expectations but very few, if they leave at all, leave without being impacted by the city, by its culture and, most especially, by its people.



① Introduction

Fulwood

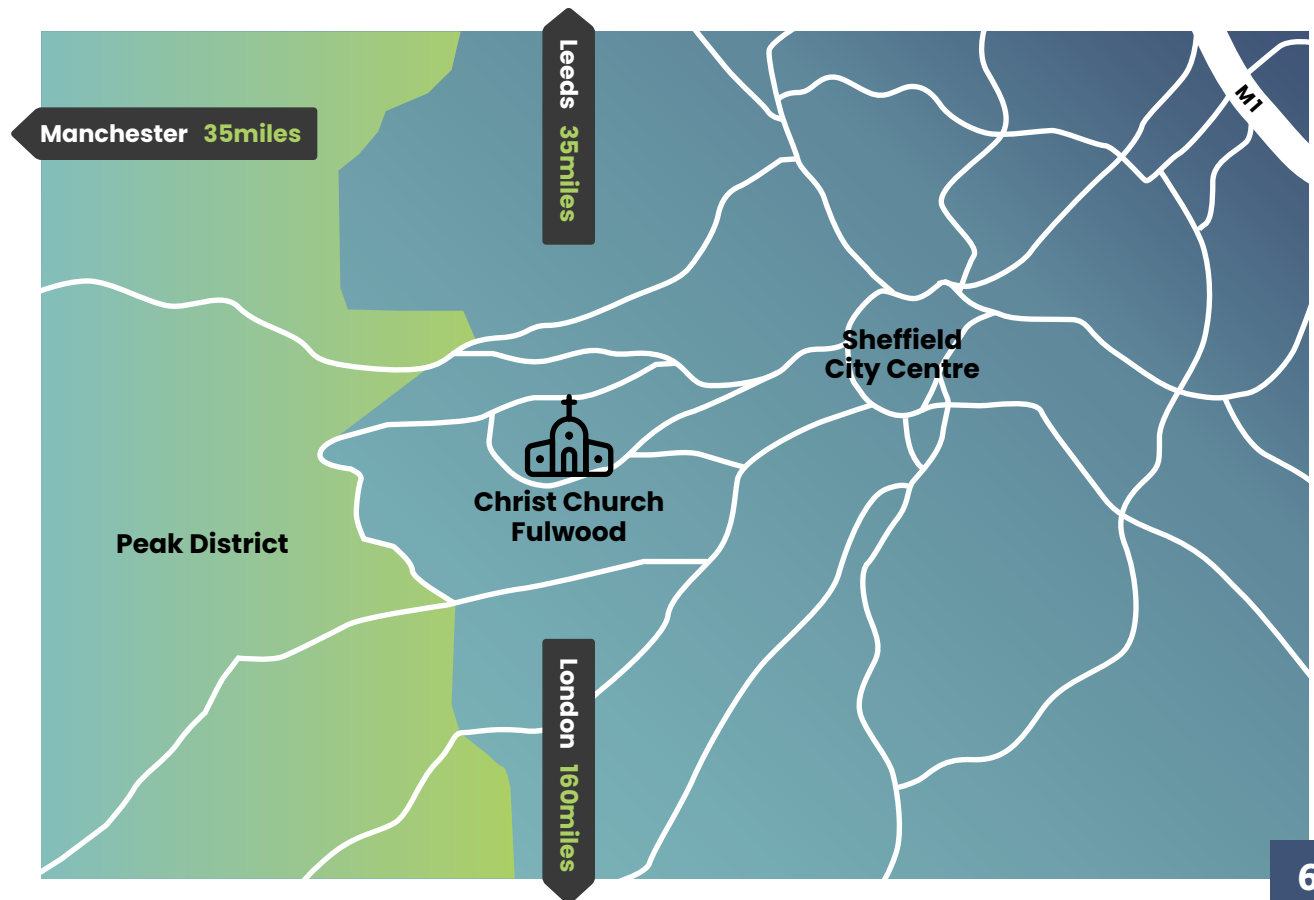
The sense of community that characterises our city is very much present in the suburb of Fulwood, where the local shopping area is still known as 'the village'. Located in the south-west corner of the city, Fulwood is bounded by the suburbs of Lodge Moor, Ranmoor, and Ecclesall.

The population of the electoral ward of Fulwood is around 19,000 and, of those, 6,000 live in the parish of Christ Church Fulwood – not the most populous in the Diocese but one of the largest by area, taking in large areas of moorland extending out to the Peak District landmark of Stanage Edge. It is a suburban parish with a rural feel, part of which is designated as a Conservation Area.

The parish displays comparatively little variation of social and ethnic groups and this is also replicated in the make-up of the congregation, even though about 60% of regular attenders live outside of the parish. It is one of the least-deprived neighbourhoods in Sheffield and this is reflected in relatively low levels of crime, above-average house prices and high levels of employment in Education and Healthcare.

Needless to say, there is an urgent need for the gospel to be preached to the people of Fulwood. There are particular challenges presented by an affluent community, and we must reach out into this community with friendship and the love of God.

6000
people live in
the parish of
Christ Church
Fulwood





It is a suburban parish with a rural feel.



② Theology

We are a conservative evangelical parish church with an emphasis on expository Bible teaching. We take the Bible seriously as God's inspired and revealed Word, have a high view of the authority of scripture and seek to apply these truths to everyday life.

We acknowledge Jesus Christ as our only Lord and Saviour and His sacrificial death on the cross as the only, and sufficient means by which our sins are forgiven and we are reconciled to God. We believe in his resurrection from the dead and that He will come again in judgement.

As such we hold firm to the statements of evangelical faith:

- Scripture alone
- Christ alone
- Grace alone
- Faith alone
- To the glory of God alone

We have an orthodox view on human sexuality and take a complementarian view of the role of men and women. The PCC has passed a resolution asking the Bishop of Sheffield to make provision for us under the terms of the House of Bishops' Declaration on the Ministry of Bishops and Priests. As a result, we receive the extended episcopal oversight of the Bishop of Maidstone.

Our church family is made up of Christians from a diverse range of denominations who unite around the tenets of evangelical doctrine. However, although we recognise that in a large church there will be a number who take different views, we are united as a fellowship of Christian believers

around the fundamentals of the Christian faith as revealed in God's Word.

Our commitment to upholding Biblical truths is also evidenced by our partnerships with other evangelical churches and organisations especially through:

1. ReNew

Advancing Anglican Evangelical ministries for the salvation of England by pioneering, establishing and securing churches. We are a core member of ReNew South Yorkshire and have close links with other ReNew churches both in South Yorkshire and nationally.

2. Yorkshire Gospel Partnership (YGP)

Aiming to multiply evangelical churches, provide evangelical training and increase evangelical cooperation in Yorkshire. Our Minister for Training is on the Steering Group and leads the delivery of Bible Training Yorkshire as a partnership between Christ Church Fulwood, and YGP.

We see these relationships as important in encouraging one another in what is becoming an increasingly difficult climate, both in secular and church culture.

③ Church Family

Sunday Services

The pandemic has altered many of our ministries and the building project has also meant many of our ministries have been temporarily “housed” elsewhere or put on hold.

We are delighted to be re-entering our main church building at the end of March 2022, although there will still be constraints on the use of the church centre for another few months.



Currently our services are:

10.30am family service

in person and live streamed

6.30pm service

in person only

(It is likely we will be returning to two morning services at 9.15am and 11.15am in coming months)

Services are based around the preaching of God’s Word with a blend of older hymns and more contemporary music with groups for children from 0–14 running concurrently during the morning services.

Prior to the pandemic we also had a fortnightly communion service, including an 8am communion service and we are starting to resume a regular pattern of holy communion as we write this profile.

Refreshments are provided between and after services.

As final Covid restrictions lift we are hoping to restart other seasonal and special services such as the Agape meal, Carols by Candlelight, and next year the Lent Communion services. With the new church facilities, there will be great opportunities to expand on this.

③ Church Family

Pastoral Care

Pastoral Care of the church family, as well as those in the community, is a high priority.

In the past we have had a fulltime Pastoral Care Worker and the PCC is keen to work with the new Vicar in shaping the future of this ministry. Pastoral Care is considered an 'Every-Member Ministry', and we currently have several 'Pastoral Care' teams including:

- Biblical Counselling (led by a BCUK intern)
- Meal provision
- Bereavement care
- Community needs
- Visiting

③ Church Family

Church Family Prayer

On the first Wednesday of each month about 100 members of the church family gather together to pray.

This is seen as a crucial part of church life as we depend on the Lord for all areas of our ministry.



③ Church Family

Other Church Family Events

We have historically held a number of special events with the aim of building up the body – a regular church away day, church family picnic, family quiz nights etc.

As we try to regather and rebuild as a church family the community group has organised some encouraging church family coffee mornings and church family walks which have been well attended and much needed.

③ Church Family

Midweek Activities

CHILDREN & FAMILIES

Our conviction is that the primary teachers of the Christian faith to children are godly parents. The way the work with the children in our church family is conducted is based on this conviction.

Sunday morning is the time when children are taught independently of their parents. In an attempt to encourage parents to talk to their children about what they themselves learnt and what the children learnt, we teach an all-age curriculum. We don't shy away from teaching children 'difficult' books as we believe the whole of God's Word is relevant to them and accessible through good teaching and preparation by the teachers. It is also lots of fun.

Our midweek groups cater for new-borns through to year 6. We run new babies' groups, toddler groups, Junior Jivers and two primary school evangelistic clubs. These midweek groups are evangelistic and have many people from the local community attending. We encourage Christian parents to come along and build relationships with those in the community.

Alongside the work with the children, we encourage the parents in bringing their children up to love Jesus. Some of the ways we do this is through Parents Forums where we take a topic to look at it from a Biblical perspective and work out together with the parents how it applies to different age groups.

We believe that parents are best placed to teach their children, so we run evangelistic family events and encourage parents to come along to our groups. We meet up with some parents one-to-one and intentionally have 'Families Worker' in the titles of our staff team.

As a church we want to bless the community, so we have developed relationships with local schools and take regular assemblies in five. An integral part of our ministry is training our volunteer leaders. We do this to bless the wider Christian family as we send off well-grounded and hopefully, godly leaders to other parts of the country.





③ Church Family

Midweek Activities

YOUTH & FAMILIES

It is our conviction that the local church is given the ministry of coming alongside parents as they seek to raise their young people to know and love the Lord. This is principally a ministry of the Word and prayer.

Christ Church Fulwood commits a significant amount of its resources to ministry amongst 11–18s. It employs a full-time youth and families' worker to work alongside the children and families' worker, as well as a part time administrator to serve both ministries. The PCC has recently approved plans to employ a junior youth, children and families' worker to serve in this ministry as they prepare to serve the Lord elsewhere in this role – part of our commitment to serving the wider church by training leaders.

In the past there have been groups for 11–14s and 14–18s on Sunday morning alongside opportunities for young people to serve in children's music and other ministry teams. A group for older teenagers met on

Sunday nights; small groups for 14–18s met during the week, groups for 11–18s met on Friday night, and there were prayer meetings as well as planned trips and days out – the most notable of which is a full week away Youth Houseparty with the 14–18s at the end of the summer.

These programmes have been severely disrupted over the last two years. Looking to the future, although we still face challenges, we are also presented with significant and exciting opportunities to refresh and revitalise ministry in a way that best serves the current shape and needs of the church family. The youth ministry has regular contact with approximately 65 young people and there is every sign that this is growing.

③ Church Family

Midweek Activities

STUDENTS

Sheffield is home to two well regarded universities and Fulwood has an established and thriving student ministry.

We have contact with about 100 students a year across all our events, and roughly 60 regularly attend Students At Seven (SAS), a small group evening just for students that meets centrally on Tuesday evenings. There are other weekly, termly and annual events put on to facilitate flourishing friendships, growth in faith and bold

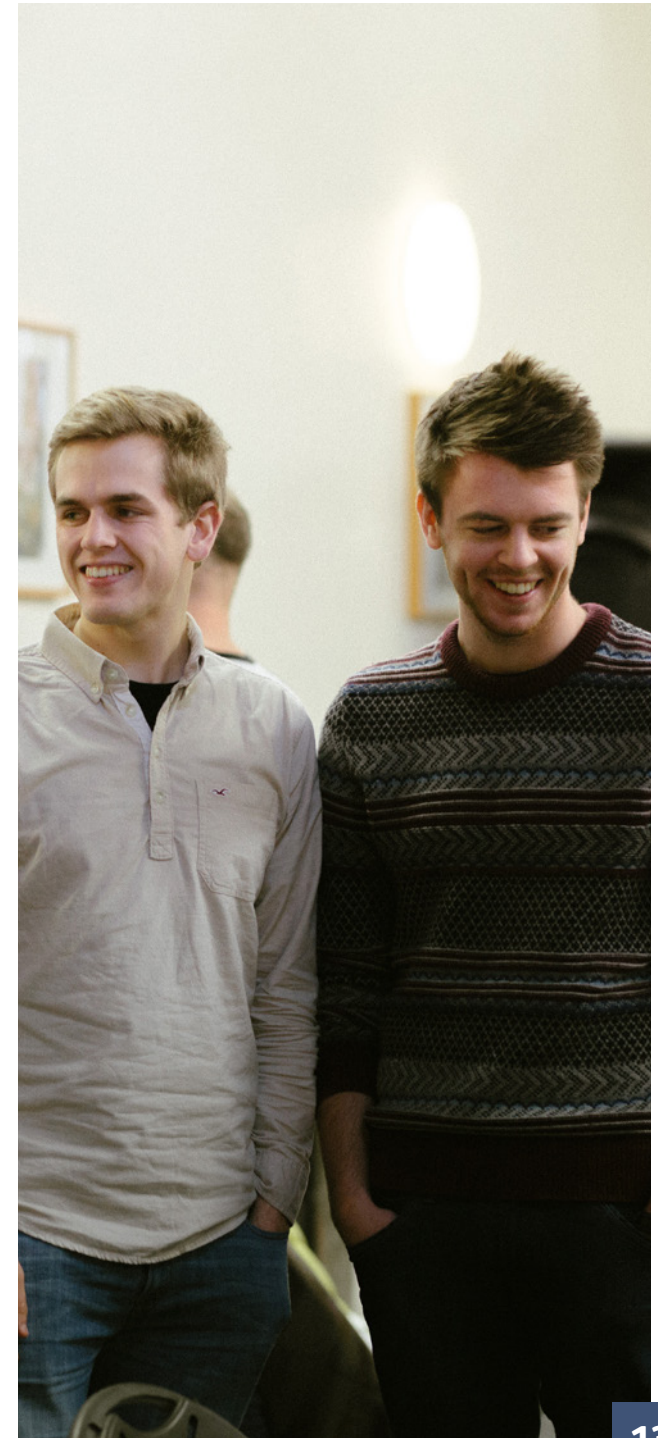
witness. The Student Team consists of a female student worker, usually several trainees, and also a larger and diverse body of church family who help especially with leading SAS groups. The student team gathers every Sunday evening in advance of each SAS meeting for training in discipling students in a small group context.

20S AND 30S MINISTRY

We run a number of different events for those in their 20s and 30s, in recognition of this being a key stage in which to grow and encourage gospel shaped lives but also to train leaders for future service.

There are several small groups for those in their 20s and 30s, which are particularly aimed at those who are new to Sheffield. The aim is that these would be shorter term groups, stepping stones into “all age” church small

groups. There are also regular events for all in their 20s and 30s e.g. seminars on specific topics relevant to this age group, social and outreach events and an annual weekend away.





③ Church Family

Midweek Activities

MINISTRY AMONGST OLDER PEOPLE

Christ Church Fulwood has a long and rich tradition of ministry to the older people in our church and in our wider community.

There has been, at various points, a staff member with specific responsibility in this area, but it has always been driven by church members with a passion for intentionally honouring older people – be it to encourage them as they head home to glory, or to reach them with the gospel in their sunset years.

We have perhaps missed opportunities in the past to remind the older members of the church that, regardless of age, their identity is found in Christ, they are God's image bearers, they still need to be nurtured and encouraged, and that they are valued members of God's own family here in Fulwood.

Prior to the pandemic, a team of about 20 would run a weekly meeting ('Friday Club') that offered a meeting place, board games and carpet bowls and a splendid lunch preceded by a brief talk that sought, in a non-confrontational way, to point people to Jesus. Including the helpers, there would be about 80 or 90 attending. Added to this there are several daytime 'small groups'.

Having said this, we have barely scratched the surface of ministry opportunities – opportunities that will grow as the percentage of those aged over 65 in the UK population increases in the years ahead.

③ Church Family

Midweek Activities

SMALL GROUPS

Over 600 of our church family are involved in mid-week small groups. These include daytime and evening groups meeting in homes and centrally, across the age span.

They are the occasions when we are encouraged and challenged together in our walk with the Lord, looking to strengthen our relationships as we “do life together”. They are also vital times for caring for each other as brothers and sisters in Christ. In a large church family, it can be difficult to make close relationships where we can bring the truth of God’s word to bear into own lives.

We encourage all to join a small group to allow closer fellowship but also the opportunity to apply what God says in his Word to our day to day lives. We follow the sermon series, and each week study the same passage that has been preached in the preceding week. Leaders enjoy a termly training session and have access to suggested discussion questions for the study.



③ Church Family

Midweek Activities

Other regular activities (some on hold during the pandemic) include:

- 1 **MEN'S AND WOMEN'S PRAYER BREAKFASTS**
- 2 **NEW MUMS DAYTIME GROUP**
- 3 **SMALL TALK (PRESCHOOL)**
- 4 **JUNIOR JIVERS (PRESCHOOL)**
- 5 **K-MOTION/GIG (PRIMARY SCHOOL AGE GROUPS)**
- 6 **YOUTH DISCIPLESHIP GROUPS**
- 7 **EFK AND CLUB (SECONDARY SCHOOL)**
- 8 **'MEN IN BOOTS'**
- 9 **WOMEN'S RUNNING AND WALKING GROUPS (NEW INITIATIVE)**



4 Outreach Ministry

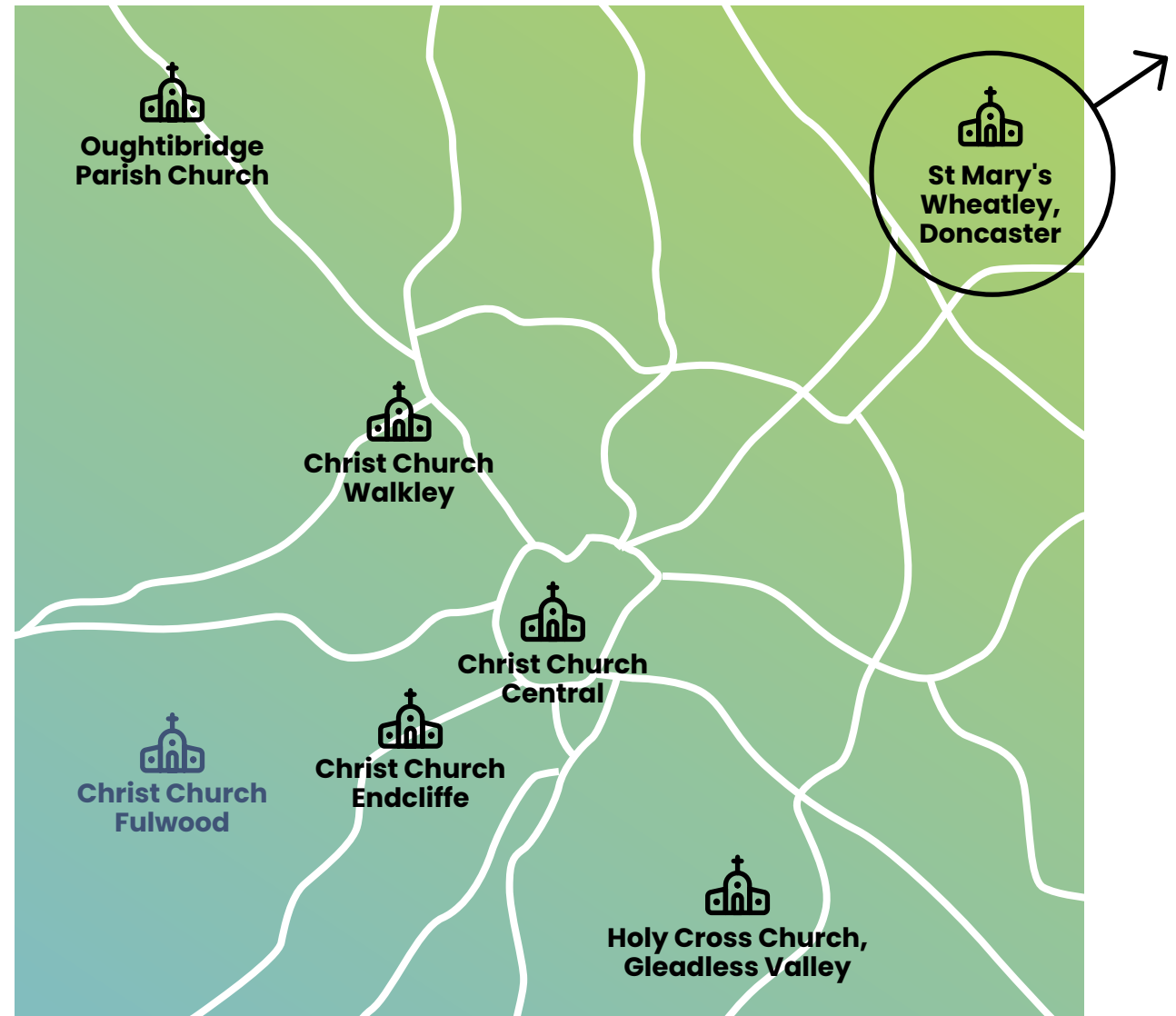
As changed people we have a love and concern for the people around us especially those in need in various ways.

We are committed to expressing that concern in practical love both individually and as a church family. Together as a congregation here are some ways it works out:

4 Outreach Ministry Church Planting

In 2009 we set a goal to plant a church every 2 years. Since then, by God's grace, we have been involved in five plants or grafts.

We like others would love to see Sheffield full of vibrant, loving, Bible teaching churches sharing the love of God and the good news of the gospel. We have had good collaboration with the Diocese and currently are in discussion with the Bishop of Sheffield about our next plant/graft.



④ Outreach Ministry

Local Bible Training – Bible Training Yorkshire

BTY is run in conjunction with the Yorkshire Gospel Partnership and serves as their offering of a training course for partner churches in the region.

Fulwood's Minister for Training serves as the Course Director, but many ministers from around the region contribute to the programme. The course is currently held at St Mary's Doncaster. 20-30 people attend annually.

The goal of the course is to aid churches in training up faithful people qualified to teach others the gospel. All the teaching therefore attempts to cultivate both growth in the godliness necessary for ministry (patience, humility, kindness, gentleness, love) as well as excellence in rightly handling Scripture.

The Course runs through a 2-year cycle, though each year, even each term, can be studied in isolation. The training day is split in two: in the mornings experienced pastor-teachers lecture on Bible books (one NT and one OT a term); in the afternoons students deliver practice talks and are taught doctrinal and biblical-theological topics.

④ Outreach Ministry

Ministry Partnership Scheme

This ministry has been supporting and encouraging local chapels and fellowships for over 25 years by sending helpers, including Ministry Trainees, to preach and lead services.



④ Outreach Ministry

Evangelistic Events

We run regular Christianity Explored courses, and even over the pandemic have been able to introduce people to the good news about Jesus through zoom courses and now smaller groups in people's homes.

We hold guest services several times a year, which are aimed to be more accessible to those who wouldn't usually come to church, often timed around particular events/dates e.g. Remembrance Sunday. Our annual Carols by Candlelight services attract many from the community and wider afield and we are privileged to be able to share the gospel with many through these events. We have also, prior to the pandemic, held a range of different evangelistic social events e.g. Burns Night supper and Christmas craft evenings, which church family members can bring friends to, and where a short gospel presentation is given as part of the evening.



④ Outreach Ministry

Local Community Outreach

We currently have few 'formal' links with the many Christian initiatives that reach out to those in need in our community and city, but as a church family we would seek to be more involved and informed as to these initiatives.

However, many individual church members play key roles in the following organisations:

THE OAKES

A Christian activity centre for young people.

SHEFFIELD CHURCHES 'SOUP KITCHEN'

A caring witness on the streets of Sheffield.

GALEED HOUSE

Helping people (especially Muslims and Christians) building friendships.

PRISON FELLOWSHIP

Seeking to show Christ's love to prisoners.

NEIGHBOURHOOD CONNECT

A new community initiative to benefit older people.

FOOD BANK

Providing food for those in clearly demonstrated need.

STREET PASTORS

Caring, listening and helping, in the context of the 'night-time'.

SNOWDROP PROJECT

Supporting those who have been trafficked/affected by modern slavery.

ASSIST

Providing support to those seeking asylum.

BABY BASICS

Supporting vulnerable new mothers and families.

GOOD NEWS FOR EVERYONE (FORMERLY GIDEONS UK)

Placing/distributing of Scriptures with a word of witness.

There is scope for the church to make more of these links, to develop others and to be encouraged to be active in reaching out to neighbours and those in need.

④ Outreach Ministry

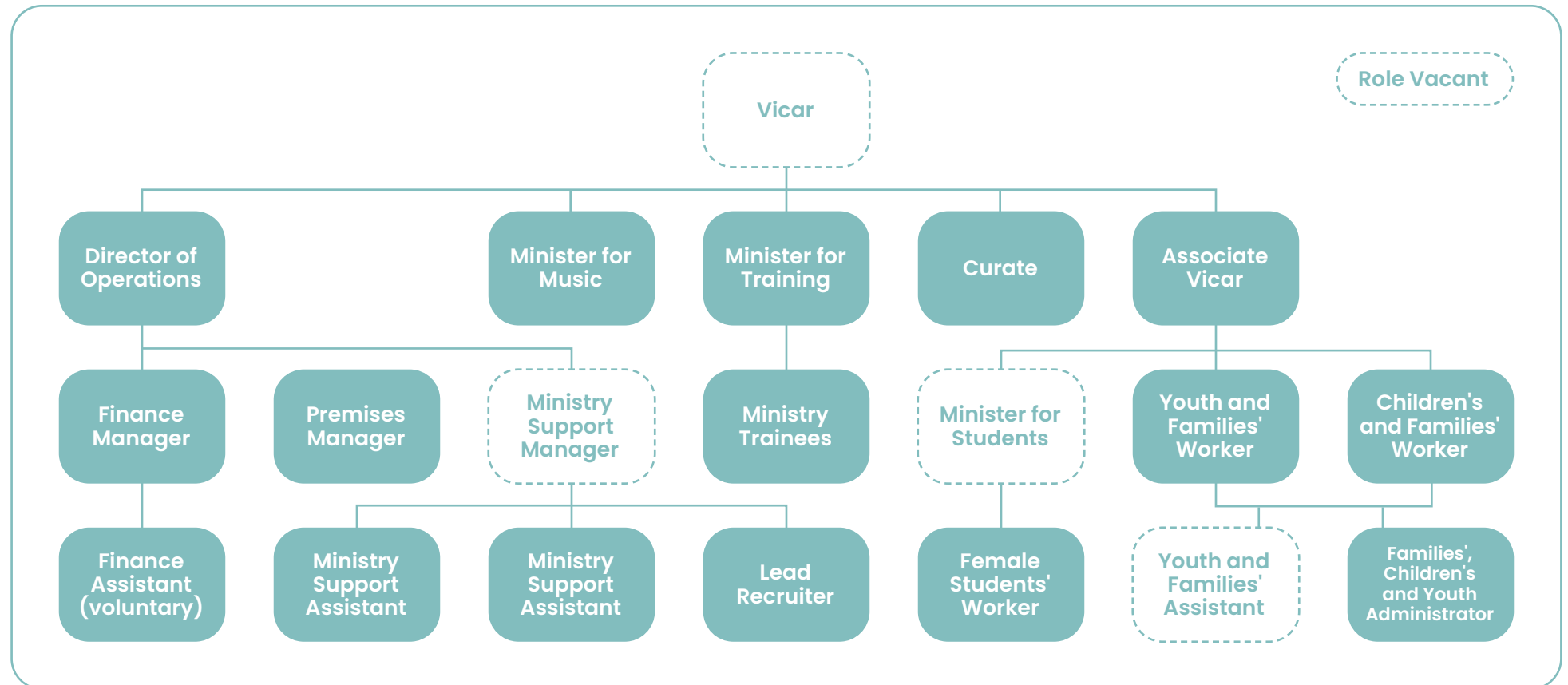
World Mission

- CCF has a long history of prayerful concern and financial support for world mission in obedience to the Great Commission.
- We aim to help people consider their engagement in world mission and, where appropriate, support them with the training and other preparation needed to undertake gospel mission both at home and abroad.
- Currently support is focused on mission partners known to the church family and engaged in gospel ministry, or activities that support this, in cross-cultural settings and/or outside the parish.
- Early each year there is a World Mission Sunday and a Church Family Prayer meeting focused on the work of our mission partners, and there is a desire for much more active information and engagement during the year with mission organisations.
- There are currently 7 mission partner families or individuals based outside the UK (in Europe, Asia and Africa), one of whom is studying at a Bible college.
- There are currently 10 UK-based mission partners: 5 at The Oakes Holiday Centre (Sheffield), 2 working in International Student ministry (Sheffield), 2 with UCCF, and 1 producing resources for churches helping people to learn English.
- Many of the church family at Fulwood, as individuals, support a wide range of Christian ministries such as Compassion, Open Doors, Barnabas Aid, TEAR Fund, Through the Roof and Torch Trust etc.



⑤ Current Leadership & Ministry Team

Staff Team



More details of our staff team can be found on the church website.

Other staffing positions currently under consideration by the PCC are a Pastoral Care Worker and Women's Worker and we would be looking for the new Vicar to shape and direct potential new roles and the development of the staff team alongside others in the leadership team. The PCC have recently approved the appointment of fulltime Minister for Students to fill the current vacant post, and we hope we will have someone in post by September 2022.

⑤ Current Leadership & Ministry Team

Lay Leadership

The PCC provide a governance role for the church, and alongside this the wardens have a supporting role—currently providing this to the Associate Vicar and others on the staff team.

We are keen to promote a model of supportive and collaborative leadership with the Vicar providing overall leadership whilst enabling the staff team to contribute to priority and vision setting, with the PCC as active participants in their governance role.

Many in the church family also have leadership roles in various ministry areas e.g. small groups, youth and children's work.

⑤ Current Leadership & Ministry Team

Ministry Trainee Scheme

The Scheme is designed as a testing ground and stepping stone for full-time Bible teaching ministry.

At any given time, we have up to 8 trainees who have joined the scheme for 1–2 years. The majority are university leavers, who apply from within the student work at Fulwood. The scheme is composed of three strands: work within a church ministry under an experienced supervisor, study at Bible Training Yorkshire and doing general practical and administrative tasks. In

such a large and supportive church family with so many opportunities for ministry, the scheme can easily be tailored to each individual's strengths and weaknesses. Our prayer for the scheme is that it would first grow disciples of Christ in their faith, love and hope, and then also in their skills for ministry.



6 Buildings

The main Church Building and the Church Centre are located within the triangle formed by Canterbury Avenue, Brookhouse Hill and Chorley Road, in the heart of Fulwood. The Vicarage is on Chorley Road, only two minutes' walk from the Church Building.

The Church Building was opened in 1839, and has been extended twice, resulting in a light and airy meeting space with balconies to the west and north. A £2.2m "Building for the Future" reordering project has just concluded – the key aims of this being to make the building a much more welcoming and flexible space which can be used all week rather than simply for Sunday services. With chairs on the ground floor and pews in the balconies, its comfortable seating capacity is 450, extendable to 500 for packed events.



The Church Centre provides a wide range of meeting spaces, including a hall which can seat around 200, and two catering kitchens which can each provide food for up to 150 people. Most of the spaces are well used all through the week for daytime and evening activities.

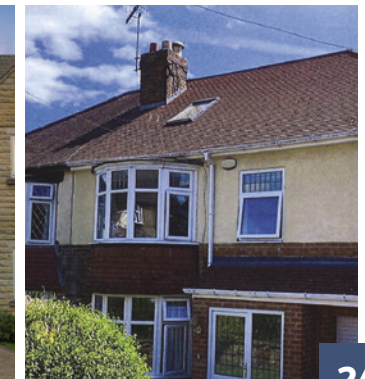


The Vicarage, built in the 1920s and provided by the Diocese, has a hall, lounge, study, dining room opening onto the kitchen, utility room and garage on the ground floor, and five bedrooms on the first floor. We would anticipate agreeing some refurbishment work to be undertaken by the Diocese prior to the new incumbent moving in.

MINISTRY HOUSES

The PCC owns a 4/5 bedroom house on Silver Birch Avenue, three minutes' walk from the Church Building, currently occupied by the Minister for Training.

In addition, the church has a strong relationship with the Brookhouse Hill Trust, an independent charity which exists to provide accommodation to gospel ministers in Fulwood to an agreed specification, on a long-term basis, and at a slight discount to market rent in return for the church providing a maintenance function.



7 Finance

On a macro scale, 2020 and 2021 have been significantly affected by Covid.

More locally, whilst the church has been pressing ahead with a £2.2m building project and a successful church graft to Oughtibridge, there have been changes in leadership which have inevitably resulted in some uncertainty within the church family. The most accurate picture of the church's finances is therefore perhaps best portrayed by presenting the actual financial results of the General Fund for the immediate pre-pandemic year (2019) alongside the PCC's approved General Fund budget for 2022. This broadly shows both reduced giving and reduced ministry expenditure during the period.

Between December 2019 and December 2021 there was a net reduction of 40 (10%) in 'giving units' (individuals, couples or families), 12 of whom can be attributed to the Oughtibridge church graft in July 2020.

Just over
90%
of the church's gift income is regular, almost all by standing order

	2019 actual (£'000)	2022 budget (£'000)
Gift income	960	847
Other income	89	28
Total income	1,049	875
Word Ministry – People	(464)	(414)
Word Ministry – Other	(154)	(46)
Property, Admin & Overheads – People	(103)	(163)
Property, Admin & Overheads – Other	(101)	(132)
Mission	(150)	(140)
Total expenditure	(972)	(895)
Fund transfers	(38)	5
Surplus/(Deficit)	39	(25)

Over the past 15 years the typical approach to budget-setting has been as follows:



At its most recent financial year end (31 December 2021), the church had the cash reserves shown here.

The planned deficit in 2022 will utilise a significant element of the General Fund free reserves, and this will need to be corrected going into 2023. The PCC has set a deficit budget for the year in confidence that a return to meeting in-person within a great new building, combined with the prospect of new leadership will, God-willing, encourage the church family to support the church's ministry into 2023 and beyond.

Fund	Purpose	£'000
General Fund	For day-to-day activities of the church	396
Growth Fund	Designated for growth activities	–
Funds set aside for building projects*	To complete ongoing works in the church building and church centre	936
Female Students' Worker funds*	To fund this role through 2022 and 2023	64
ReNew South Yorkshire Match Fund*	To support the final 1/3 of ministry project costs in ReNew partner churches	38
Other*	Various restricted funds	34
Total		1,468

*Restricted Fund

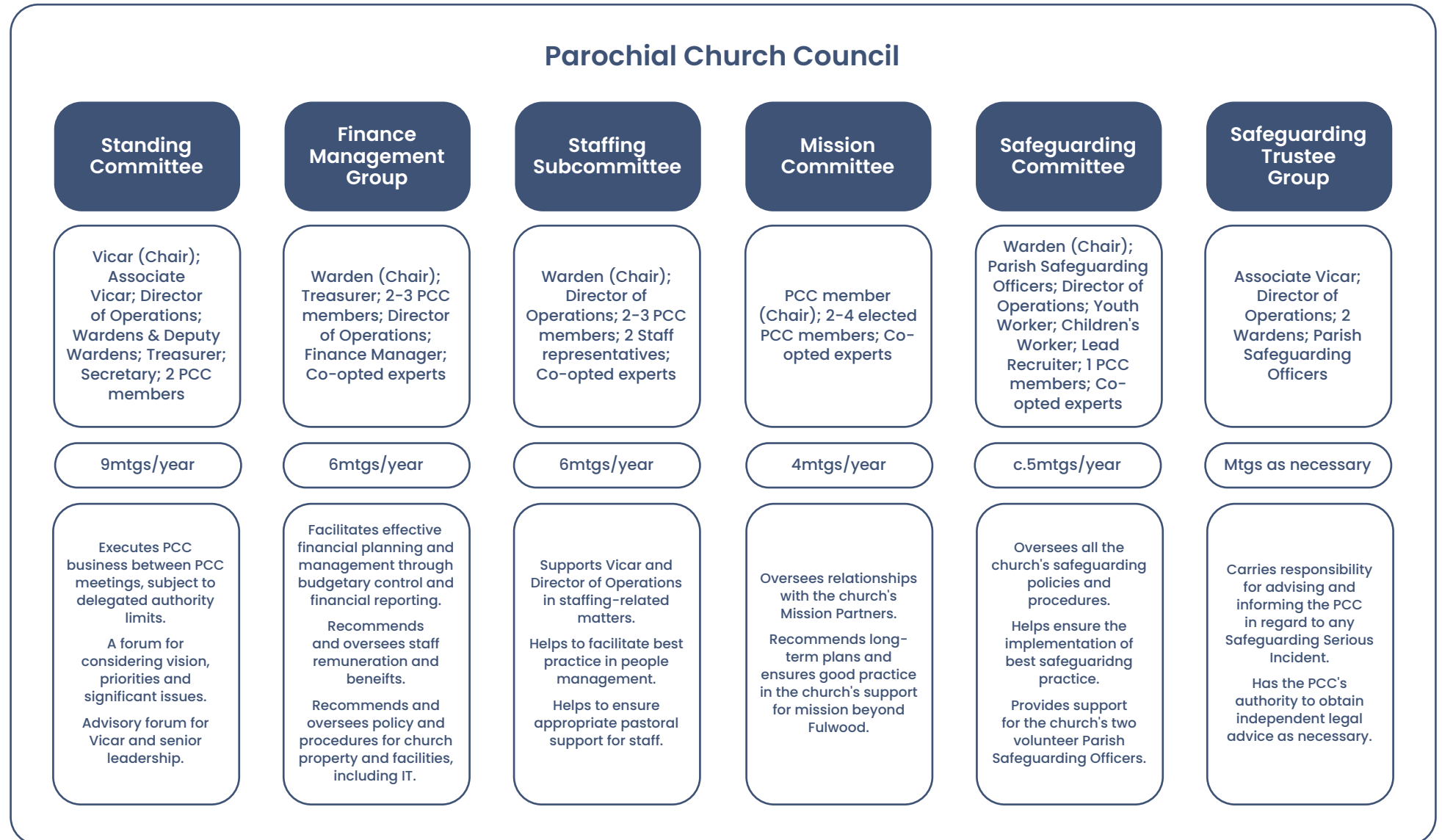
8 Governance/Accountability

The Parochial Church Council ('PCC') currently comprises 30 members and normally meets nine times each year: monthly, except in April, August and December. Annual attendance over the past few years has been a stable average of around 80%.

PCC Membership – March 2021

Clergy The clergy are currently the Associate Vicar, Director of Operations and Curate-in-Training	3
Churchwardens The two elected Churchwardens have typically been supported by two Deputy Churchwardens, either as elected or co-opted PCC members	2
Elected lay Elected lay members currently include three elected members of Deanery Synod and one elected member of General Synod	24
Co-opted One of the Parish Safeguarding Officers is currently the only co-opted PCC member. The Treasurer, Secretary and Mission Committee Chair have historically been co-opted, although these roles are currently filled by elected members.	1
Total	30

The PCC is supported in its work by six sub-committees as well as ad-hoc working groups established from time to time.



Ad-hoc working groups currently include:

Visitation and 31:8 Implementation Group	Leads and guides the implementation of the recommendations of the 2021 Bishops' Visitation and 31:8 review
Building for the Future Committee	Leads and oversees the 10-year project developing the church buildings, due to complete by mid-2022
Hardship Fund Committee	Reviews applications and oversees distribution of the small Hardship Fund set up early in the Covid pandemic
ReNew South Yorkshire Fund Committee	Reviews applications and oversees distribution of the small Renew South Yorkshire fund established to support the final third of funding for ministry projects in ReNew South Yorkshire partner churches

⑧ Governance/Accountability **Safeguarding**

We have two well trained Parish Safeguarding Officers.

They are supported by a Safeguarding Subcommittee of the PCC chaired by one of the Church Wardens. We also have Safeguarding Trustees who take this whole issue very seriously and seek under God's leading and wisdom to ensure a safe environment for all the Church family, especially our young people and any who may be vulnerable in any way.

We consider the role of the Incumbent to be critical in leading by example to ensure best safeguarding practice.

9 Personal Profile

We fully appreciate that all we may desire in a new Vicar, may not necessarily be found in one man.

However, we do believe that God will thoroughly equip whoever He calls to this post 'for every good work' 2 Timothy 3 v 17.



I give you this charge: Preach the Word; be prepared in season and out of season; correct, rebuke and encourage – with great patience and careful instruction."

2 TIMOTHY 4 V 2

CHRISTIAN FAITH

- A mature Christian, firm and faithful in his personal relationship with our Lord Jesus Christ that is reflected in his dependency and personal walk before God

BIBLE TEACHER

- Having a recognised ability and experience in faithfully teaching and applying God's Word
- Able to connect the gospel of Christ to our everyday lives and struggles
- Able to communicate the gospel effectively and persuasively to the church and unchurched, across a broad range of backgrounds

PASTOR

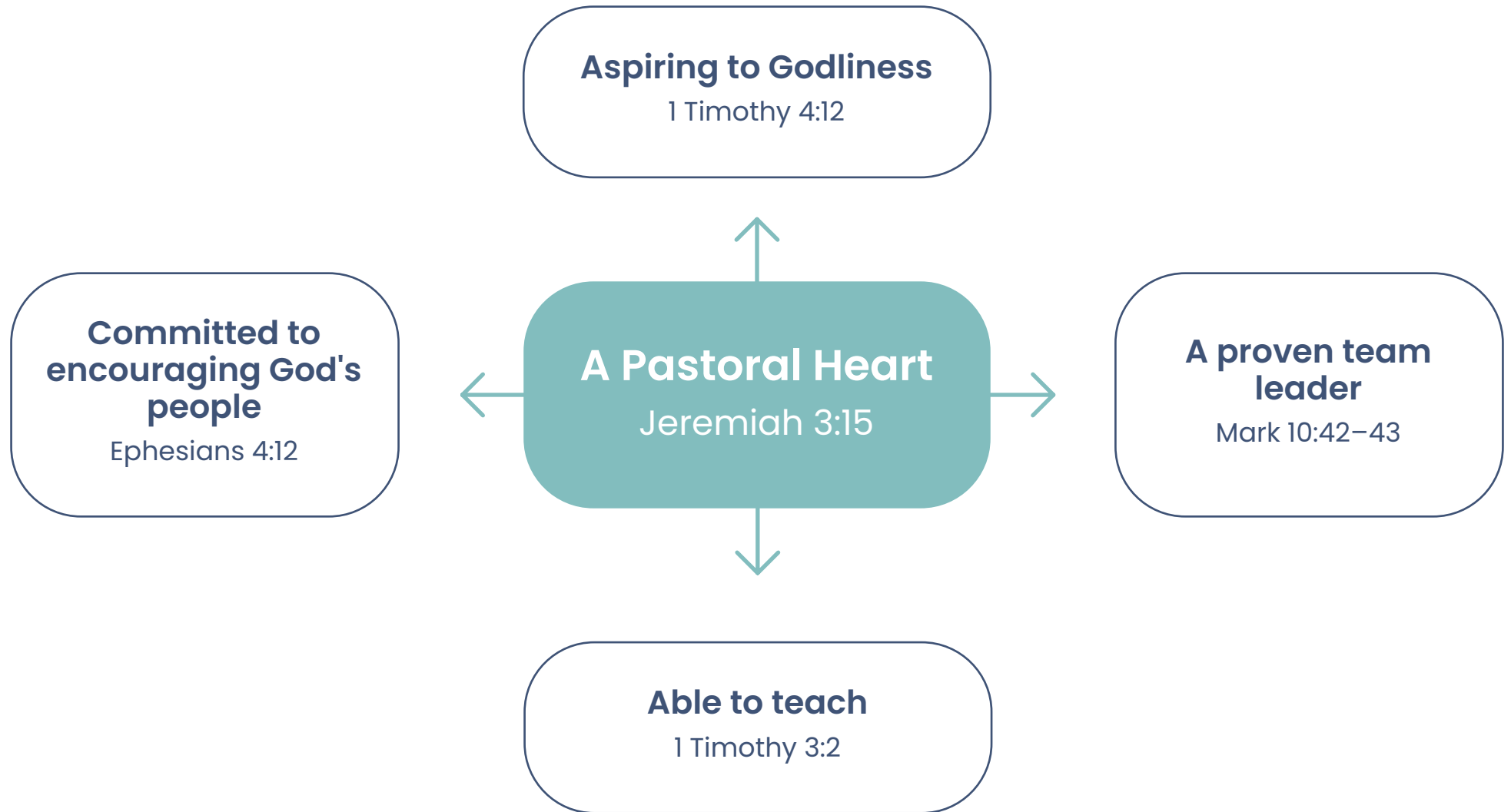
- Someone with a compassionate shepherd heart and a genuine love for the Lord Jesus Christ and his people
- Able to unite, love and care for a church family that has been traumatised by recent events
- Able to model compassionate pastoral care and encourage and promote an 'all-member' approach to pastoral care
- Clear commitment to safeguarding best practice and prepared to work collaboratively to deal with problems as they arise

ABILITY TO LEAD A TEAM

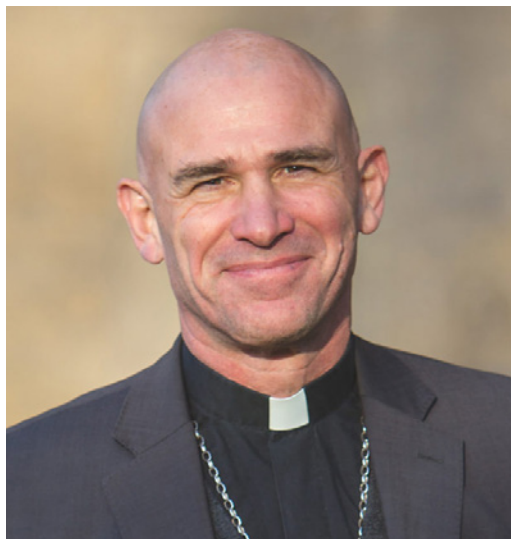
- Having a proven ability to relate to, lead and inspire a large ministry team, and a large and diverse church family
- Able to demonstrate servant leadership and deal compassionately with confrontation and division
- A commitment to collaborative leadership - able to unite, inspire and mobilise an effective team, delegate appropriately, supervise with pastoral insight, and provide direction and leadership
- A commitment to work well with the PCC, and others with leadership roles within the church family

EQUIPPING, ENCOURAGING AND ENABLING

- Able to recognise, use and enable gifting within the church family and encourage those involved in other gospel ministries
- Rebuilding a vibrant gospel-centred fellowship following a period of significant uncertainty from both Covid and leadership challenges
- Has a gospel mission heart, and able to encourage the church family to demonstrate this to the community, as well as nationally and internationally



10 A Word from our Bishops



“

It has been a joy to me to sense a renewed firmness of partnership in the Gospel between the church family at Fulwood and the Diocese of Sheffield, and in particular a readiness on the part of CCF to further the Diocesan Strategy as a resourcing church through a pattern of church plants and grafts. I am therefore praying the Lord will call to this post someone with a strong sense of vocation to this task at this time; a person of faith and hope and love in God; someone who laughs easily and is secure in themselves in Christ; someone who has a zest for the Gospel; someone with a sense of adventure, unafraid of failure and reliant on the grace of the Holy Spirit."

THE RT REVD DR PETE WILCOX, BISHOP OF SHEFFIELD



“

Christ Church Fulwood has a well deserved reputation for gospel outreach, expository preaching and commitment to church planting. It continues to have a profound impact both within the Diocese and more widely. This gospel vigour is something I am really keen to encourage alongside the further development of loving, pastorally-caring relationships. I count it a real privilege to be able to minister at Christ Church and very much look forward to supporting the next incumbent in a new phase of the church's life."

THE RT REVD ROD THOMAS, BISHOP OF MAIDSTONE

11 Conclusion

We are excited about the prospect of a new Vicar taking us forward under the leading of the Holy Spirit, so that we may grasp a vision of a united and restored church family sharing the love of God and utilizing our new facilities with a renewed passion for the urgency of the gospel of our Lord Jesus Christ. We would seek to provide a strong support network for our new incumbent, both prayerfully and practically.

“

For I know the plans I have for you,' declares the Lord, 'plans to prosper you and not to harm you, plans to give you hope and a future.'

JEREMIAH 29 V 11

