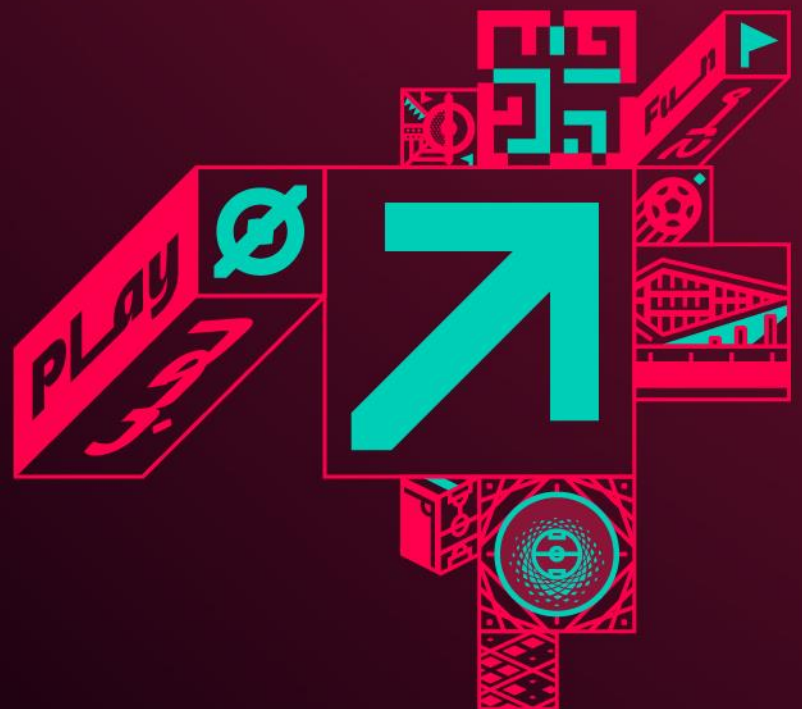




FIFA WORLD CUP
Qatar 2022

Draw Procedures

FIFA World Cup Qatar 2022™



Final Draw Procedures:

FIFA World Cup Qatar 2022™

The Final Draw for the FIFA World Cup Qatar 2022™, scheduled to be held in Doha on 1 April 2022, determines how 29 qualified teams, two intercontinental play-off slot placeholders and one European play-off slot placeholder are divided into eight groups of four for the final competition.

The information below sets out the procedure for the final draw.

1. Slot allocation

The final slot allocation per qualification zone is as follows:

QUALIFICATION ZONE	NUMBER OF TEAMS	QUALIFIED TEAMS
Asia	4.5	IR Iran, Japan, Korea Republic, Saudi Arabia
Africa	5	Cameroon, Ghana, Morocco, Senegal, Tunisia
North and Central America and the Caribbean	3.5	Canada, Mexico, USA
South America	4.5	Argentina, Brazil, Ecuador, Uruguay
Oceania	0.5	
Europe	13	Belgium, Croatia, Denmark, England, France, Germany, Netherlands, Poland, Portugal, Serbia, Spain, Switzerland
Host	1	Qatar

2. Seeding and pot allocation

The 29 qualified teams, two intercontinental play-off slot placeholders and one European play-off slot placeholder are allocated to four pots of eight teams each, based on the FIFA/Coca-Cola World Ranking released on 31 March 2022, following the conclusion of the international match window in March 2022. Based on the rankings, the top seven teams along with the hosts, Qatar, are allocated to team pot 1. The teams ranked 8 to 15 are allocated to team pot 2. The teams ranked 16 to 23 are allocated to team pot 3 and, finally, team pot 4 will include teams ranked 24 to 28 plus the two placeholders to be occupied by the winners of the intercontinental play-offs scheduled for 13-14 June 2022 and the placeholder for the European play-off slot winner.

Pot 1	Pot 2	Pot 3	Pot 4
Qatar (host)	Mexico	Senegal	Cameroon
Brazil	Netherlands	IR Iran	Canada
Belgium	Denmark	Japan	Ecuador
France	Germany	Morocco	Saudi Arabia
Argentina	Uruguay	Serbia	Ghana
England	Switzerland	Poland	IC Play-off 1
Spain	USA	Korea Republic	IC Play-off 2
Portugal	Croatia	Tunisia	European Play-off

3. Draw procedure

1. The four pots representing the teams are labelled team pots 1 to 4. In each team pot, there are eight balls with the country name for each qualified team, including, in team pot 4, two placeholders for the intercontinental play-off winners and the one placeholder for the European play-off slot winner.
2. The eight pots representing the groups are labelled group pots A to H. In each group pot, there are four balls with the position numbers 1, 2, 3 and 4 for each respective group.
3. The draw starts with team pot 1 and ends with team pot 4. Each pot is completely emptied before moving on to the next pot.
4. A ball is drawn from a team pot, followed by a ball from one of the group pots, thus determining the position to which the respective team is allocated.

4. Draw constraints

1. In pot 1, Qatar is represented by a different coloured ball and pre-assigned to position A1 as the host country.
2. The remaining seven top-seeded teams in team pot 1 are automatically drawn into position 1 of each remaining group B to H.
3. FIFA's general principle, whenever possible, is to ensure that no group has more than one team from the same qualification zone drawn into it. This is applicable to all zones except Europe, which is represented by 13 teams. Each group must have at least one but no more than two European teams drawn into it. Thus five out of the eight groups will have two European teams.
4. Placeholders for the European play-off slot winner and two intercontinental play-off winners will also follow the general geographical principle of "separation" of teams from the same qualification zone described in point 4.3 above. The geographical allocation of each intercontinental play-off placeholder will be based on the confederation team pairings participating in that specific intercontinental play-off match.
5. The intercontinental play-off pairings are:
 - Australia or UAE (AFC team) v. Peru (CONMEBOL team)
 - Costa Rica (Concacaf team) v. New Zealand (OFC team)
6. The European play-off:
 - Wales v. Scotland or Ukraine

5. Match schedule

		Group Matches							Round of 16	Quarter-Finals	Semi-Finals	3 rd Place & Final																	
		Monday 21 November	Tuesday 22 November	Wednesday 23 November	Thursday 24 November	Friday 25 November	Saturday 26 November	Sunday 27 November	Monday 28 November	Tuesday 29 November	Wednesday 30 November	Thursday 1 December	Friday 2 December	Saturday 3 December	Sunday 4 December	Monday 5 December	Tuesday 6 December	Wednesday 7 December	Thursday 8 December	Friday 9 December	Saturday 10 December	Sunday 11 December	Monday 12 December	Tuesday 13 December	Wednesday 14 December	Thursday 15 December	Friday 16 December	Saturday 17 December	Sunday 18 December
Al Bayt Stadium	01	A1	V	V	V	V	V	V	V	V	V	V	V	1B	2A	WS1	WS2	WS5	WS6	WS7	WS8	WS9	WS10	WS11	WS12	WS13	WS14	WS15	WS16
	02	V	V	V	V	V	V	V	V	V	V	V	V	1A	2B	WS3	WS4	WS17	WS18	WS19	WS20	WS21	WS22	WS23	WS24	WS25	WS26	WS27	WS28
	03	V	V	V	V	V	V	V	V	V	V	V	V	1C	2C	WS19	WS20	WS21	WS22	WS23	WS24	WS25	WS26	WS27	WS28	WS29	WS30	WS31	WS32
	04	V	V	V	V	V	V	V	V	V	V	V	V	1D	2D	WS21	WS22	WS23	WS24	WS25	WS26	WS27	WS28	WS29	WS30	WS31	WS32	WS33	WS34
Lusail Stadium	05	V	V	V	V	V	V	V	V	V	V	V	V	1E	2E	WS23	WS24	WS25	WS26	WS27	WS28	WS29	WS30	WS31	WS32	WS33	WS34	WS35	WS36
	06	V	V	V	V	V	V	V	V	V	V	V	V	1F	2F	WS25	WS26	WS27	WS28	WS29	WS30	WS31	WS32	WS33	WS34	WS35	WS36	WS37	WS38
Stadium 974	07	V	V	V	V	V	V	V	V	V	V	V	V	1G	2G	WS27	WS28	WS29	WS30	WS31	WS32	WS33	WS34	WS35	WS36	WS37	WS38	WS39	WS40
	08	V	V	V	V	V	V	V	V	V	V	V	V	1H	2H	WS29	WS30	WS31	WS32	WS33	WS34	WS35	WS36	WS37	WS38	WS39	WS40	WS41	WS42
Education City Stadium	09	V	V	V	V	V	V	V	V	V	V	V	V	1I	2I	WS31	WS32	WS33	WS34	WS35	WS36	WS37	WS38	WS39	WS40	WS41	WS42	WS43	WS44
	10	V	V	V	V	V	V	V	V	V	V	V	V	1J	2J	WS33	WS34	WS35	WS36	WS37	WS38	WS39	WS40	WS41	WS42	WS43	WS44	WS45	WS46
Al Janoub Stadium	11	V	V	V	V	V	V	V	V	V	V	V	V	1K	2K	WS35	WS36	WS37	WS38	WS39	WS40	WS41	WS42	WS43	WS44	WS45	WS46	WS47	WS48
	12	V	V	V	V	V	V	V	V	V	V	V	V	1L	2L	WS37	WS38	WS39	WS40	WS41	WS42	WS43	WS44	WS45	WS46	WS47	WS48	WS49	WS50