

2021 ParkScore® index: Access

MIAMI, FLORIDA

The Access category of the ParkScore® index awards points based on the percentage of the population within a 10-minute walk of a public park. This analysis is provided via the ParkServe® mapping application, which identifies the population living within a 10-minute walk of a park by creating dynamic 1/2-mile service areas (10-minute walking distance) for all public parks. In this analysis, service areas use the street network to determine walkable distance (streets such as highways, freeways, and interstates are considered barriers).

In Miami, 87% of the population lives within a 10-minute walk of a park. Among the remaining 58,776 people without access to a nearby park, The Trust for Public Land suggests **where to prioritize the development of new parks** to reduce this gap. This prioritization is based on a comprehensive index of six equally-weighted demographic

and environmental metrics:

- Population density*
- Density of low income households (households with income less than 75% of the urban area median income; less than \$50,000 in Miami)*
- Density of people of color*
- Community health (a combined index based on the rate of poor mental health and low physical activity from the 2020 CDC PLACES census tract dataset)
- Urban heat islands (surface temperature at least 1.25 degrees greater than city mean surface temperature from The Trust for Public Land, based on Landsat 8 satellite imagery)
- Pollution burden (air toxics respiratory hazard index from 2020 EPA EJScreen)

*Based on 2020 Forecast block groups provided by ESRI

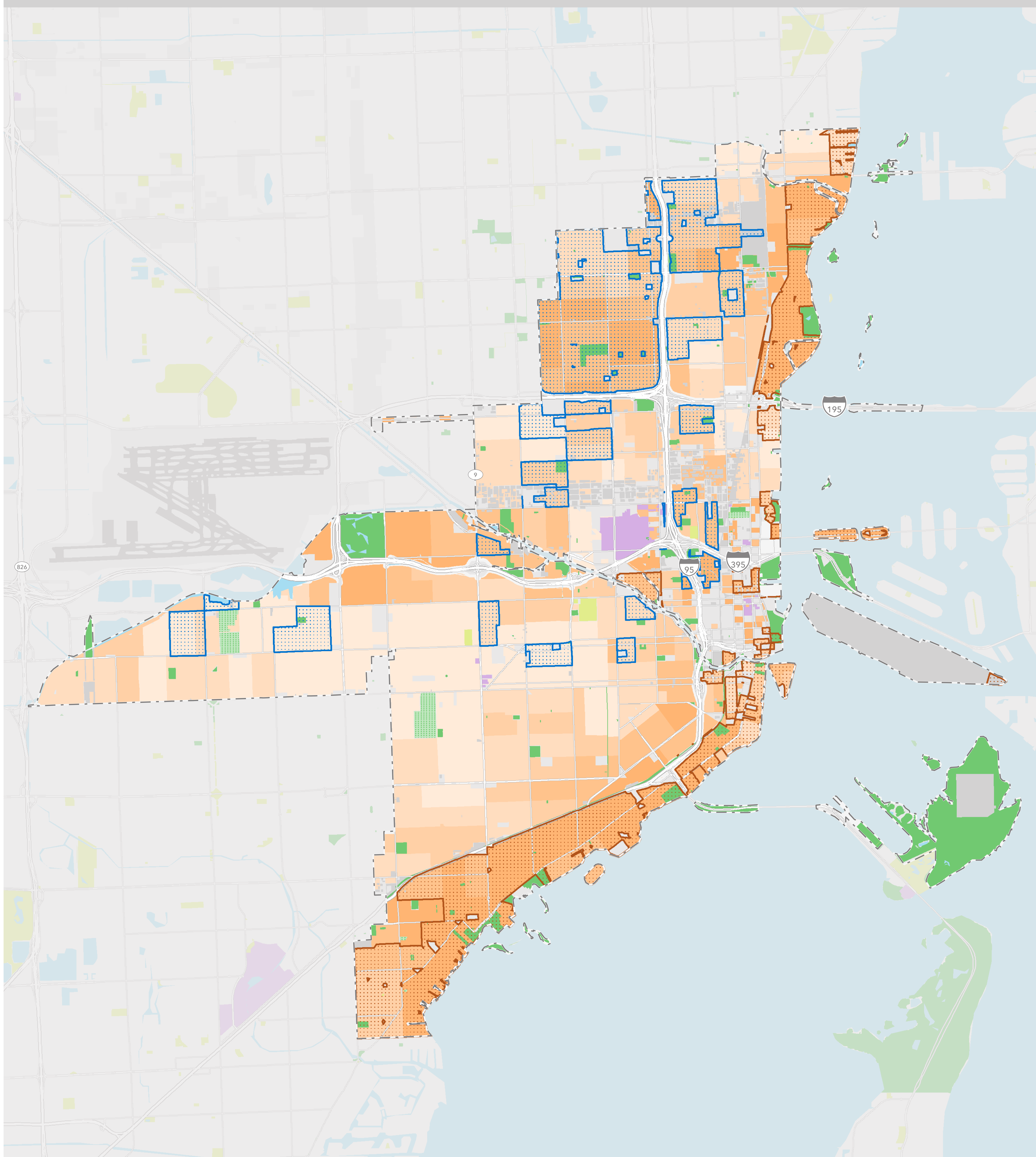
<p>Priority areas for new parks (outside of 10-minute walk service areas of parks with public access)</p> <ul style="list-style-type: none"> Very high priority High priority Moderate priority 	<ul style="list-style-type: none"> Cemetery University Military Industrial Vacant zero population area
<ul style="list-style-type: none"> Park with public access (Might include only partial representation of a park with public access along the city's border) Other park or open space 10-minute walk (half-mile) service area of park with public access 	<ul style="list-style-type: none"> City boundary County boundary

Special thanks to the following data providers: Miami, Esri, OSM, CDC, EPA. Information on this map is provided for purposes of discussion and visualization only. Map created by The Trust for Public Land on May 4, 2021. The Trust for Public Land and The Trust for Public Land logo are federally registered marks of The Trust for Public Land. Copyright © 2021 The Trust for Public Land. www.tpl.org



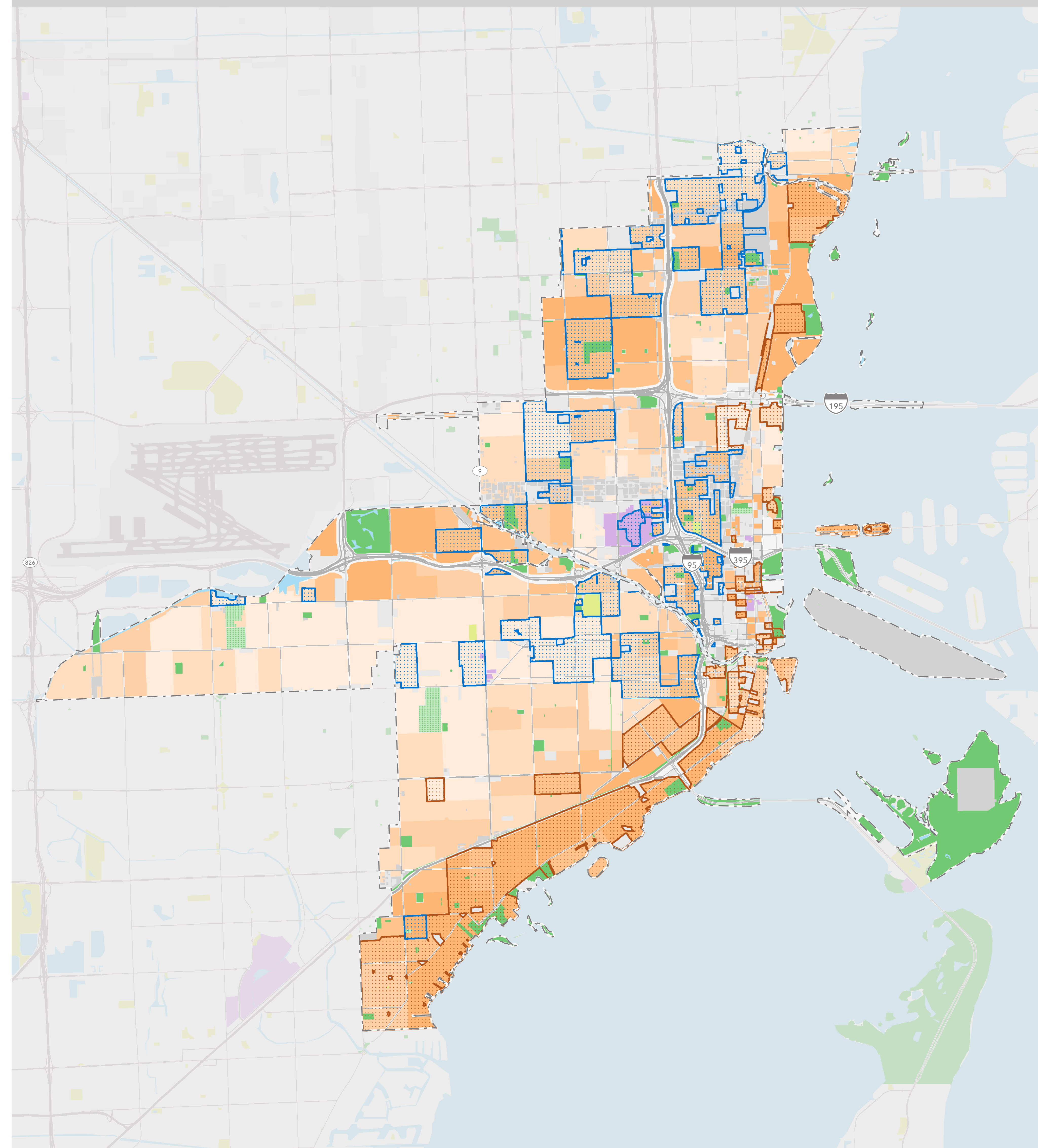
Race

■ Block Group with higher % of **people of color**
■ Block Group with higher % **white** population



Income

■ Block Group with higher % of **low-income** households
 ■ Block Group with higher % of **high-income** households



2021 ParkScore® index: **Equity**

MIAMI, FLORIDA

The Equity category of the ParkScore® index awards points in part based on the difference in nearby park space between neighborhoods in a city:

- On a per person basis, ratio of nearby public park space between communities of color and white communities
- On a per person basis, ratio of nearby public park space between low-income communities and high-income communities

Nearby park space per person effectively measures the available park space within a 10-minute walk of a micro-neighborhood, identified as those with the highest concentrations (top 20% of all census block groups in a city) of people of color or white population and high-income or low-income households. Households with income less than 75% of city median income (less than \$50,000 in Miami) are

considered low-income; households with income greater than 125% of city median income (greater than \$75,000 in Miami) are high-income.

In Miami, neighborhoods of color have 33% less park space than white neighborhoods, and low-income neighborhoods have 46% less than high-income neighborhoods.

The metrics for people of color reflect each of the Census-designated race/ethnicity groups: Black, Hispanic, and Indigenous and Native American, Asian Americans, Pacific Islanders, multiple races, and other communities of color.

Demographic profiles are based on 2020 Forecast block groups provided by Esri.

- Park with public access (Might include only partial representation of a park with public access along the city's border)
- Other park or open space
- Cemetery
- University
- Military
- Industrial
- Vacant zero population area
- - City boundary
- - County boundary
- Park acres per person
 - Very high
 - High
 - Moderate
 - Low
 - Very low



Special thanks to the following data providers: Miami, Esri, OSM
 Information on this map is provided for purposes of discussion and visualization only. Map created by The Trust for Public Land on May 5, 2021. The Trust for Public Land and The Trust for Public Land logo are federally registered marks of The Trust for Public Land. Copyright © 2021 The Trust for Public Land. www.tpl.org



Miami, FL

2021 rank

ParkScore

54

49.5



Each city can earn a maximum of 100 points. Points are awarded for **14** statistical measures across five categories: **acreage, investment, amenities, equity, and access.** The final scores in each category are then averaged to generate each city's ParkScore.

ACREAGE		EQUITY		AMENITIES			INVESTMENT	ACCESS
20 out of 100 points		59 out of 100 points		57 out of 100 points			31 out of 100 points	81 out of 100 points
Median park size	Park land percent of city area	10-minute walk access to park for people of color	10-minute walk access to park for low-income households	Basketball hoops per 10,000 residents	Dog parks per 100,000 residents	Playgrounds per 10,000 residents	Spending per capita	Percent of population (individuals) within a 10-minute walk of a park with public access
20	19	79	80	40	67	7	31	
out of 100 points	out of 100 points	87%	88%	3.1	1.7	1.3	out of 100 points	
2.6 acres	4.9%	Park acres for neighborhoods of color	Park acres for low-income neighborhoods	Recreation/senior centers per 20,000 residents	Restrooms per 10,000 residents	Splashpads per 100,000 residents	\$69.19	
		44	33	96	100	31		87%
		out of 100 points	out of 100 points	out of 100 points	out of 100 points	out of 100 points		(access details)
			(equity details)	1.5	3.6	0.9		

Demographic category	Total for entire city	Ratio of park space per capita	# within a 10-minute walk*	% within a 10-minute walk*	# outside of a 10-minute walk	% outside of a 10-minute walk
Total population (individuals)	460,400	Neighborhoods** of color have 0.67 as much park space as white neighborhoods**.	401,624	87%	58,776	13%
Age 19 and younger	94,267		82,220	87%	12,047	13%
20-64 years old	287,525		252,416	88%	35,109	12%
Over 64 years old	78,597	Ratio of park space per capita in neighborhoods** by race/ethnicity compared to white:	66,989	85%	11,608	15%
White***	46,449		43,125	93%	3,324	7%
Black***	67,238	0.94	63,930	95%	3,308	5%
American Indian/Alaska Native***	397	0.83	377	95%	20	5%
Asian***	4,966	0.81	4,515	91%	451	9%
Pacific Islander***	68	0.49	62	91%	6	9%
Other race***	682	0.79	633	93%	49	7%
Two or more races***	3,367	0.69	3,175	94%	192	6%
Hispanic origin	337,244	0.19	285,807	85%	51,437	15%
Households						
Under 75% median city income (low income)	81,058	Low-income neighborhoods** have 0.54 as much park space as high-income neighborhoods**.	71,603	88%	9,455	12%
75%-125% median city income	22,273		19,422	87%	2,851	13%
Over 125% median city income	82,418		74,227	90%	8,191	10%

*Inside a 10-minute walk service area of a park with public access. **Neighborhoods are defined as Census Blocks with the highest concentration (upper quintile) of a demographic within the city. ***Excludes those that report Hispanic origin (which is captured separately from race by the U.S. Census). Total population and households may vary from estimates published elsewhere due to differences between city boundaries and the boundaries of Census Block Groups used in this analysis, or due to methodology differences in third party data providers' forecast demographics. Analysis based on 2020 Forecast Census Block Groups, provided by Esri.