

MANCHESTER  
1824

The University of Manchester

2nd July 2015



# International

# Festival of

# 2015 Public Health

# UK

[www.festivalofpublichealth.co.uk](http://www.festivalofpublichealth.co.uk)

In association with [cities@manchester](mailto:cities@manchester) and Manchester Medical Society



# Your Hosts



The Manchester Urban Collaboration on Health (MUCH) is part of the Centre for Epidemiology, Institute of Population Health within the Manchester Academic Health Science Centre at the University of Manchester. MUCH has recently been designated as the World Health Organization Collaborating Centre for Health Indicators. MUCH performs high quality research, and delivers teaching and training in the field of public health, and has established links to local, national and international public health organisations. The Director of MUCH, Dr Arpana Verma, is also the Director of the Centre for Epidemiology and the Masters of Public Health at the University of Manchester, she is also the president of the European Public Health Association, Urban Health section. Contact us on [much@manchester.ac.uk](mailto:much@manchester.ac.uk) and visit our website at [www.manchester.ac.uk/much](http://www.manchester.ac.uk/much). We are grateful to all our partners, collaborators, students, colleagues and lay advisors.



Cities are often portrayed as sites of disorder and social problems, yet they also serve as sites of cultural creativity, transnational connection, diversity, conviviality, and motors of intellectual, economic, environmental and political transformation. [cities@manchester](https://twitter.com/cities@manchester) is a group of academic scholars at the University of Manchester who are committed to understanding the global urban condition, past, present and future. The group brings together individuals from the arts and humanities, the social sciences, and business to study changing urban conditions across multiple scales through academic, activist and practitioner networks in Africa, Asia, Europe and North and South America.

MUCH and [cities@manchester](https://twitter.com/cities@manchester) have kindly sponsored today's event.

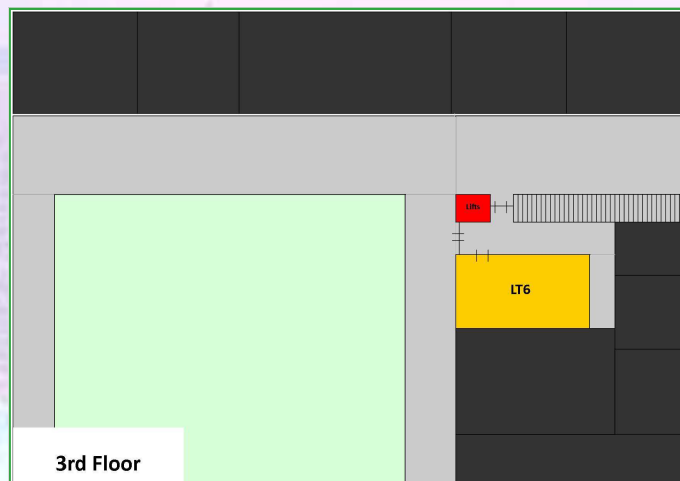
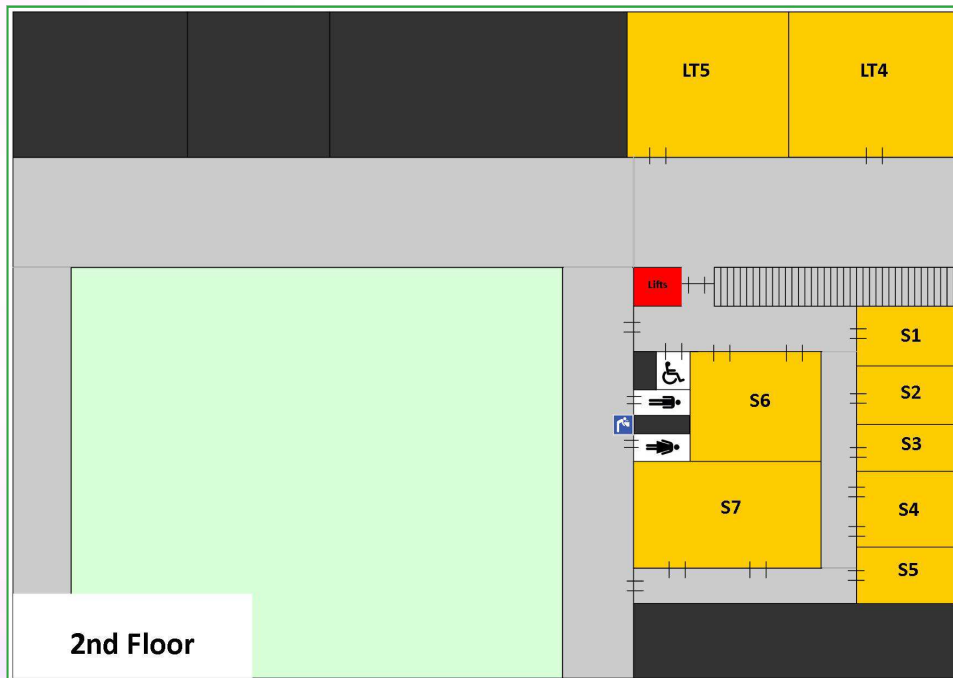


#PHFest2015

# Festival Programme

Time	Presenter/event	Room
08:00	Registration, coffee & tea, poster viewing	Reception / Chromo Zone
09:00	The Professor Aidan Halligan Memorial Lecture	LT 1
09:30	<b>Professor Paul Cosford</b> <i>Director for Health Protection and Medical Director, Public Health England</i>	LT 1
09:55	<b>Samantha Tunney</b> <i>Director, Well North</i>	LT 1
10:05	<b>Karen Livingstone &amp; Chrissy Alcock</b> <i>Senior Nurse &amp; Training Lead and Special Projects/Senior Emergency Nurse, UK-MED</i>	LT 1
10:30	<b>Penny Clough MBE</b> <i>Domestic violence campaigner and co-founder of Justice for Jane</i>	LT 1
10:40	<b>Professor Norma Raynes</b> <i>Executive Director, Intergen</i>	LT 1
11:00	<b>Professor Gillian Leng (including Global Health Society prizes)</b> <i>Deputy Chief Executive, National Institute for Health and Care Excellence</i>	LT 1
11:25	Coffee/Tea Break	Chromo Zone
11:40	<b>Edwin Chadwick Lecture (Professor Mukesh Kapila)</b> Parallel Session 1 Workshops	LT 1 Breakout Rooms
12:40	Lunch Posters (13:00 - 13:30)	Chromo Zone
13:30	Parallel Session 2 Lightning Lectures Workshops	Breakout Rooms
14:30	Coffee/Tea Break	Chromo Zone
14:40	<b>Debbie Abrahams MP (including "Friends of the Festival")</b> <i>Labour MP for Oldham East and Saddleworth, and Parliamentary Private Secretary to the Shadow Health Secretary Andy Burnham</i>	LT 1
15:05	<b>Amit Prasad</b> <i>Health Economist, World Health Organization Centre for Health Development</i>	LT 1
15:30	<b>Professor Paul Johnstone</b> <i>North of England Regional Director, Public Health England</i>	LT 1
15:55	<b>Natalie Bennett</b> <i>Leader of the Green Party &amp; Women's Health Consultant for WHO</i>	LT 1
16:20	<b>Dr Arpana Verma</b> <i>Director, Centre for Epidemiology, University of Manchester</i>	LT 1
16:45	<b>Professor Martin Tickle (including Festival Prizes)</b> <i>Director, Institute of Population Health, University of Manchester</i>	LT 1

# Festival Layout



# Keynote Speakers



**Natalie Bennett**

*Leader of the Green Party & Women's Health consultant for WHO*

*"Ask not what the NHS can do for you but what you can do for the NHS"*



**Professor Paul Cosford**

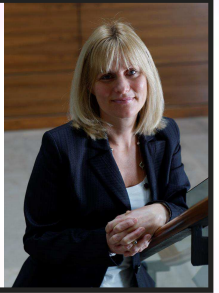
*Director for Health Protection and Medical Director, Public Health England*



**Amit Prasad**

*Health Economist, World Health Organization Centre for Health Development, Kobe, Japan*

*"Health Equity in the Global Urban Agenda"*



**Professor Gillian Leng**

*Deputy Chief Executive, National Institute for Health and Care Excellence (NICE)*

*"NICE guidance and global impact"*



**Debbie Abrahams MP**

*Labour MP for Oldham East and Saddleworth, and Parliamentary private secretary to the Shadow Health Secretary Andy Burnham*

*"Health Inequalities"*



**Professor Paul Johnstone**

*North of England Regional Director, Public Health England*

*"Devolution and Health: the next revolution"*



**Professor Norma Raynes**

*Executive Director, Intergen*

*"Will You Still Heed Me When I'm 74?"*



**Karen Livingstone**

*Senior Nurse and Medical Adviser, UK-Med*

*"Ebola the Invisible Enemy: The UK-Med NHS Response Programme"*



**Chrissy Alcock**

*Training Lead and Special Projects/ Senior Emergency Nurse UK-Med/ UKIETR*

*"Ebola the Invisible Enemy: The UK-Med NHS Response Programme"*



**Penny Clough MBE**

*Domestic violence campaigner and co-founder of Justice for Jane*

*"I wish I'd gone to Specsavers"*



**Professor Martin Tickle**

*Director, Institute of Population Health, University of Manchester*



**Samantha Tunney**

*Director, Well North*

*"Well North"*



**Dr Arpana Verma**

*Director, Manchester Urban*

# Professor Aidan Halligan Memorial Lecture

---

**LT 1 / / 09:00 - 09:30**

It is with great sadness that this year's Festival will not be attended by a great friend of the Festival, a wonderful speaker and an inspiring human being - Professor Aidan Halligan. Some of you may have been lucky enough to hear him speak with great enthusiasm about his latest project 'Well North' at last year's Festival. Through his incredible ideas, he has shaped a project that really gets to the heart of communities and aims to address inequalities, increase resilience, and reduce worklessness amongst people and communities that need help the most.

At 9am, a special memorial lecture will take place in Professor Halligan's honour. There will also be a Well North workshop during Parallel Session 2 in S6.

For those of you that didn't know him, Professor Halligan was Director of Well North, a Public Health England initiative to improve the health of the underprivileged across the North of England. He was also Principal of the NHS Staff College for leadership development and Chairman of Pathway, a charity that has developed health services for the homeless within the NHS.

He became a professor in fetal and maternal medicine in Leicester before taking on a national role as the first NHS Director of Clinical Governance. He went on to become Deputy Chief Medical Officer for England, with responsibility for issues of clinical governance, patient safety and quality of care across the NHS in England.

Tragically, Aidan passed away suddenly at the age of 57. Below is a link to an obituary for Aidan which featured in The Guardian.

<http://www.theguardian.com/society/2015/jun/19/aidan-halligan>



# Follow the Festival!

Follow us on Twitter

[@festivalofphuk](https://twitter.com/festivalofphuk)

[#PHFest2015](https://twitter.com/#!/PHFest2015)



If you don't already, please follow our Festival Twitter feed [@festivalofphuk](https://twitter.com/festivalofphuk). We will be tweeting live updates throughout the day to promote the discussion of major public health issues with those unfortunate people who cannot join us in person! Remember to use the Festival hashtag [#PHFest2015](https://twitter.com/#!/PHFest2015) on your tweets!

In order to make the International Festival of Public Health UK 2015 more interactive than ever before, we are providing every delegate with an electronic voting clicker. Select speakers will use this facility to take a poll of delegates' views on important public health issues during the plenary sessions. The results of each poll will be available immediately, potentially directing the nature of the presentation! Make sure that you make your opinion heard by joining in with this informal and entirely anonymous feature that is new to the Festival this year.



**UHCE**

**URBAN HEALTH CENTERS EUROPE 2.0**

By 2050, the proportion of the European population aged over 65 years will have doubled, significantly increasing the amount of care required to continue to lead an active and independent life. There is currently a great deal of separation in the provision of medical and social care, with little crosstalk between the two. This has led to high demand for treatment with very little emphasis on prevention. The costs of such an approach, both financially and in terms of time, are vast and unsustainable and will become worse as the population increases. In addition to this, the frail elderly population become increasingly dependent on medical provision. By integrating health systems with community organisations and social care provision we may be able to improve quality of life and independence.

Urban Health Centers Europe 2.0 is a project being run to analyse healthy ageing across Manchester and other modern cities throughout Europe. This pilot project is assessing whether integration of health and social care pathways, early detection of frailty and appropriate adaptation and support can promote active and healthy ageing in European cities. By doing so, we may be able to improve the way that care for the increasing elderly population is provided and at the same time also reduce the cost of care through falls prevention and decreasing the requirement for hospitalisation.

We are delighted to have some of our European partners from the project presenting at this year's Festival. We hope that this will provide the basis for a stimulating and interesting discussion.



[#PHFest2015](https://twitter.com/#!/PHFest2015)

# Manchester Medical Society's Edwin Chadwick Lecture

**LT 1 // 11:40 - 12:40**

**Edwin Chadwick (1800—1890), Public Health Pioneer**

Edwin Chadwick was born in Manchester in 1800. While studying to become a lawyer in London, Chadwick became interested in political and social reform. He became one of the most important public health activists of the 1800s.

Chadwick believed in using science as a means for social improvement and in 1832 he was asked to serve on a royal commission to investigate the effectiveness of the Poor Laws - a system of social security in place since 1601. His work contributed to the 1834 Poor Law Amendment Act.

In the course of his investigations into the living conditions of the poor, Chadwick became interested in the problem of sanitation. He was convinced that active measures such as cleaning, drainage and ventilation would make people healthier and therefore less dependent on welfare. His investigation inspired the Public Health Act of 1848 and the establishment of the general Board of Health, of which Chadwick was the first director.

Edwin Chadwick wrote the world's first report highlighting the link between good sanitary conditions and Public Health. His work has inspired generations, and as such, Manchester Medical Society set up the Edwin Chadwick Lectures in the 1990s in celebration of Edwin Chadwick's importance in the world of public health. The lectures are reserved for only the most special of occasions, and talks are delivered by those at the top of their careers. Previous Edwin Chadwick Lectures include talks given by Professor Mike Kelly, Director of the Centre of Public Health Excellence at the National Institute for Health and Clinical Excellence; Andrew Jones, Manager of the National Drug Analysis systems; and Macmillan's 'Let's be clear - get it checked!' cancer awareness campaign team.

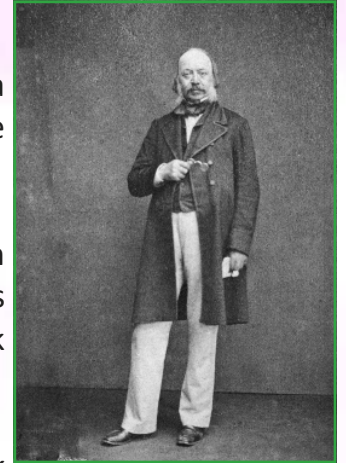
Manchester Medical Society are pleased to have a very special guest speaker delivering the Edwin Chadwick Lecture at this year's International Festival of Public Health UK:

## **Professor Mukesh Kapila CBE**



**Dr Mukesh Kapila, CBE** is Professor of Global Health and Humanitarian Affairs & Executive Director of the Office for Global Health at the University of Manchester. He is also an Associate Fellow of the Geneva Centre for Security Policy and Adjunct Professor at the International Centre for Humanitarian Affairs, Nairobi. He is a Special Representative of the Aegis Trust, and Board Director of Nonviolent Peaceforce. His memoir "[Against a Tide of Evil](#)" was nominated for the "2013 Best Non Fiction Book" award.

Professor Kapila has extensive experience in international development, humanitarian affairs, human rights and diplomacy, with particular expertise in tackling crimes against humanity, disaster and conflict management, and in global public health. He has qualifications in medicine, public health, and development from the Universities of Oxford and London.





# Parallel Session Workshops

---

## Well North Workshop

### *'Improving the health of the poorest, fastest'*

Well North is a strategic collaborative programme which seeks to tackle the wider determinant complexity underlying the substantive health inequalities between the North and the South of England. The programme seeks to improve the health and wellbeing of people and families in our most deprived communities, making the previously 'invisible', 'visible' to deliver three strategic goals:

- Addressing inequality by improving the health of the poorest, fastest;
- Increasing resilience at individual, household and community levels;
- Reducing levels of worklessness, a cause and effect of poor health.

Behavioural and lifestyle factors are major contributors in around 50 percent of all premature deaths.

Well North is a collaboration which operates on a Hub and Spoke model, across 9 pilot sites, with 3 pilots formally commencing on 1<sup>st</sup> April 2015, with 3-4 commencing within 6 months of the initial phase, and a further 2-4 commencing early 2016. The Hub and Spoke Team operate as the 'Well North Team', and work together to identify 'hot spots' to target people at risk of premature mortality, where high rates of emergency hospital admissions coincide with socially and economically disadvantaged communities. Using 'familiar stranger' methodology, the Well North Team will 'reach and engage' the most vulnerable people in communities, exploring the health attitudes, beliefs and behaviours of residents and various professionals living and working in the hot spot areas. Local people, including patient experts and residents' representatives, will be brought together to address local issues which currently prevent people from living longer, healthier lives. Working with multiple agency teams, and using social prescribing, Well North will wrap services around people, moving the knowledge, not the people, focusing interventions on long term conditions, in particular.

Public Health England is providing £9M which is being matched by local authorities, and other agencies, in the pilot areas, in cash and in kind.

To support the collaboration, funding is being sought from charities, entrepreneurs and bids are being made for additional funding particularly where innovation and creativity could be enhanced through targeted financial support and sponsorship. Additional collaborators are being sought from business, skills and enterprise, to maximise the benefits of a 'patch' approach to working in partnership. The Well North methodology is being iteratively developed, to ensure what we learn in a small geography, can be grown and transplanted elsewhere. Evaluation is absolutely key to our methodology to build a robust evidence base.

**This workshop will take place in S6 during Parallel Session 2 (13:30).**

# Parallel Session Workshops

---

## **Offering Very Brief Advice on smoking - it only takes 30 seconds to change a smoker's life (The Roy Castle Lung Cancer Foundation)**

Smokers may take several attempts to quit smoking successfully, so it is important to keep giving advice at every opportunity. According to NICE, all health professional should advise all smokers to stop smoking (NICE 2006).

The evidence is that Health Care Professional advice can be one of the most important triggers for a quit attempt. The big question is how to give it effectively without taking up too much time or causing awkwardness.

Very Brief Advice or VBA has been developed to avoid these problems. Smokers know they should stop smoking. What they don't know is how, and what support is available.

**This workshop will take place in S6 during Parallel Session 1 (11:40).**

## **The legal, public and philosophical considerations for global health data processing by citizens, state and public health professionals**

With parallel computing we can devise a dynamic data subject consent integrated global health data bank that would include and update state legislations and regulations, and individuals' personal choices! Scalable parallel computing will have a large and positive effect in the field of health. This is in relation to genomics, environment and to individuals' health.

**This workshop will take place in S7 during Parallel Session 1 (11:40).**

## **Planning access to Automated External Defibrillators (AEDs) on a university campus**

Giving first aid to a person who is hurt or ill as a first step before medical attention can help a great deal and can even save a person's life.

University campuses have large volumes of people present on a daily basis, and access to AEDs is essential in case of emergencies.

This workshop will provide background of the University of Manchester's project for access to AEDs, a collaboration with North West Ambulance Service. This workshop will include a demonstration of how AEDs work.

**This workshop will take place in S7 during Parallel Session 2 (13:30).**

# Jolly Wheezers

We are delighted to have the Jolly Wheezers here performing for us today during lunch. We very much hope that you will enjoy their performance as much as we have!

The Oldham Jolly Wheezers are a singing group for people with respiratory disease and was established in 2013 by the Inspire Social Enterprise after winning an UnLtd “Do It” Social Enterprise award at the University of Manchester.

At the time, none of the Jolly Wheezers had ever sung in a choir before or in front of an audience. They have since performed in front of Sir Bruce Keogh, National Medical Director for NHS England; at The International Conference on Urban Health at the Manchester Central Convention Complex; at a Symposium of Singing, Wellbeing and Health at the Royal College of Music, London and at the Lowry Theatre in Salford at a corporate event organised by GlaxoSmithKlein.

Through structured exercises and practice, the choir has learnt how to breathe differently and more efficiently. Not only do these skills help them to sing better, they can also use the exercises to help them self-manage their condition including sudden attacks of breathlessness.



Building on the success of the Jolly Wheezers, the Inspire Social Enterprise is now working with researchers from The University of Manchester, musicians from the BBC Philharmonic Orchestra, and the ‘Speakeasy’ charity in Ramsbottom to set up a new singing group for people with aphasia. Aphasia affects around 1/3 of people who have had a stroke. Although people with aphasia may have difficulties with speech, the ability to sing is often relatively unaffected. Over the next 6 months we will be designing a music/singing programme specifically for people with aphasia and a second programme for health care professionals and musicians who are interested in delivering the programme to people with aphasia.

The fantastic work of the Inspire Social Enterprise and The Jolly Wheezers was recently recognised with an Outstanding Achievement Award at the UnLtd Higher Education Social Entrepreneurship in Education award ceremony in London.

For further details about the Jolly Wheezers, please contact Adam Garrow at [adam.p.garrow@manchester.ac.uk](mailto:adam.p.garrow@manchester.ac.uk).

**Inspire**  
SOCIAL ENTERPRISE



#PHFest2015

UnLtd  Award Winner

# WHO Urban Heart

We would like to thank the World Health Organization Centre for Health Development (Kobe, Japan) for hosting a free two-day pre-conference on Urban HEART, a user-friendly guide for local and national officials to identify health inequities and plan actions to reduce them.

Using evidence from WHO's Commission on Social Determinants of Health, Urban HEART encourages policy-makers to develop a holistic approach in tackling health equity.

Since the launch of the pilot programme in 2008, Urban HEART has been pilot-tested in cities in Brazil, Indonesia, Islamic Republic of Iran, Kenya, Malaysia, Mexico, Mongolia, Philippines, Sri Lanka and Vietnam. By 2011, officials in nearly 50 countries have been trained on using Urban HEART.

The workshops gave delegates an opportunity to learn interactively about the Urban HEART and:

- Join the movement to make their city healthier and more equitable
- Understand the 6 step process of implementing Urban HEART in their city
- Analyse data on health outcomes and social determinants of health using Urban HEART's Matrix and Monitor
- Learn from experiences of cities in 40 countries that have used Urban HEART

If you would like more information about Urban HEART but missed the workshops, Mr Amit Prasad (Health Economist, WHO) will be providing a plenary lecture at 15:05 and will be in attendance at the Festival all day.



## Urban HEART

Urban Health Equity Assessment and Response Tool

# Parallel Session 1

---

**LT 1 - Edwin Chadwick Lecture**

**S6 - The Roy Castle Lung Cancer Foundation**

**S7 - The legal, public and philosophical considerations for global health data processing by citizens, state and public health professionals**

**LT 2**

**Health Protection**

**CHAIR - Dr Michael Donmall**

**Enhancement and Novel Psychoactive Substances. Breaking Bad or Making Good?**

Colin Tyrie (Manchester Mental Health & Social Care NHS Trust)

**A system for quantifying the burden of alcohol-attributable harm at a local level and its use in the licensing process in Tameside**

Matthew Birchall (Tameside Metropolitan Borough Council)

**Local initiatives addressing health inequalities as part of the CQUINs Scheme**

Eleanor Ennis (Public Health England)

**Are the reasons for non-uptake of the MMR vaccine being documented in an inner city GP practice?**

Julia Miah and Amal Samsudeen (University of Manchester)

**LT 3**

**Health Promotion and Improvement**

**CHAIR - Angela Spencer**

**GULP 'Give Up Loving Pop'**

Robin Ireland (Health Equalities Group)

**Increasing organ donation in the North West South Asian community through targeted education**

Agimol Pradeep (Central Manchester University Hospital)

**Using linked data to estimate the relationship between physical activity and health**

Brenda Gannon (University of Manchester)

**'Doctor, I want to start the pill...'**

Aalaa Jawad (North Central Deanery)



**11:40 - 12:40**

**#PHFest2015**

# Parallel Session 1

---

## LT 4

### Occupational and Environmental Health

#### CHAIR - Professor Raymond Agius

**Characterisation of pedestrian exposure to nanoparticle emission at traffic intersections**

Anju Goel (University of Surrey)

**Air Pollution, Occupation and Health: An Ecological Analysis**

Subhashis Basu (Centre for Workplace Health, Health and Safety Laboratory)

**Occupational exposure to coarse, fine and ultrafine particle emissions from building refurbishment activities**

Farhad Azarmi (University of Surrey)

**Planning a health promotion intervention for the World Food Programme workers in developing countries**

Francesco Di Nardo (Institute of Public Health, Università Cattolica Del Sacro Cuore, Rome, Italy)

**Effectiveness and cost-effectiveness of yoga for reducing back pain in the workplace**

Ned Hartfiel (Bangor University)

## LT 5

### Prevention and Screening

#### CHAIR - Emily Parry-Harries

**Cervical cancer screening service utilization: The relative contribution of health insurance coverage and socioeconomic status of Namibian women**

Olatunde Aremu (Birmingham City University)

**Evaluation of a secondary school violence prevention workshop**

Madeleine Cochrane (Liverpool John Moores University)

**Annual asthma reviews in adults: Are patients attending them on time?**

Sargam Vohra (University of Manchester (University Hospital of South Manchester))

**Creativity and the co-production of health services: using Ketso as a hands-on tool to gather the views of several hundred services users, providers and carers**

Joanne Tippett (University of Manchester and Ketso)



**11:40 - 12:40**

**#PHFest2015**

# Parallel Session 1

---

## LT 6

### Health Services Research

#### CHAIR - Dr Roger Harrison

##### **Using Text Mining to Support the Development of Public Health Systematic Reviews**

Georgios Kontonatsios (University of Manchester)

##### **'Always paracetamol. They give them paracetamol for everything': the health of Eastern European migrants and their experiences of the UK health service**

Hannah Madden (Liverpool John Moores University)

##### **Using Patient Participation Groups to Improve General Practice Services: A Service Evaluation**

Neil Cockburn (University of Manchester)

##### **The Truth is Out There**

Paul Lee, Fellow Royal Society Public Health FRSPH, FCIQB, FASI, MRICS, MIOE (Cornishway PPG Chair, South Manchester Health & Community Representative, MAHSE MSc Clinical Science Programme & National School Healthcare Science CCVRS Lay Representative) and Jackie Nightingale

## S1

### Health Promotion and Improvement

#### CHAIR - Dr Cordelle Mbeledogu

##### **The impact of distance from green space on obesity**

Omer Ali (University of Manchester)

##### **Comparing determinants of falls and fear of falling among European countries**

Carmen Franse (Erasmus MC, University Medical Center, Rotterdam, The Netherlands)

##### **Promoting health: journeys into and beyond volunteering**

Anne Mills (University of Bournemouth)

##### **European Urban Health Centre project (UHCE): Creating Elderly Support Groups in public social services of the Municipality of Pallini**

Eleni Konstantinou (Municipality of Pallini, Greece)

##### **Heart disease: is it a question of power?**

Fatima Saeed (University of Manchester)



# 11:40 - 12:40

#PHFest2015

# Parallel Session 1

---

**S2**

## **Health Services Research**

### **CHAIR - Dr Gunjit Bandesha**

**Muslim women's transition to motherhood**

Shaima Hassan (Liverpool John Moores University)

**Ethnic differences in women's use of mental health services: do social networks play a role? Findings from a national community survey**

Dharmi Kapadia (University of Manchester)

**A study of quality standards for enoxaparin prophylaxis in AICU patients**

Jiaqian Cui (University of Manchester)

**An audit of oxygen prescription and monitoring in the acute medical assessment unit at University Hospital of South Manchester**

Sarah Chua (University of Manchester)

**Physical Activity promotion for Cancer Survivors (PACS)**

Sadia Nafees (Bangor University)

**S3**

## **Teaching and Training**

### **CHAIR - Dr Isla Gemmell**

**'First do no harm': some quandaries as a volunteer in a Low Income Country**

Adrian Sutton (University of Manchester)

**Evaluation of Talk Cancer - a cancer awareness training programme for community-based health workers and volunteers**

Helen George (Cancer Research UK)

**A very preliminary set of outputs from the Introduction to Population Health**

Ilan Chamovitz (Manchester Business School)

**Developing the skills of frontline integrated care practitioners in enabling self-care in Manchester – working towards a whole system approach**

Janet Mantle (Manchester City Council)



**11:40 - 12:40**

**#PHFest2015**



# Parallel Session 1

---

**S4**

## **Global Health**

### **CHAIR - Andrew Jones**

**Media Matters: A deconstruction of the disparity of media coverage in humanitarian crisis**

Samuel Moody (University of Manchester)

**Women as peace-builders: Addressing Gender Based Violence (GBV) in Colombia**

Amy Smith (University of Manchester)

**Are Health Education Interventions Effective for the Control and Prevention of Urogenital Schistosomiasis in Sub-Saharan Africa? A Systematic Review**

Amy Price (University of Manchester)

**Minimising the harm that celebrity humanitarianism causes: How can we move forward from Band Aid and Make Poverty History?**

Iain Murphy (University of Manchester)

**S5**

## **Health Promotion and Improvement**

### **CHAIR - Dr Martin Yuille**

**A Lesbian, Gay, Bisexual and Trans needs assessment for Salford**

Magda Sachs (Salford City Council)

**Social media and self image: a comparison between a developed and developing country**

Sadhia Khan (University of Manchester)

**A pilot cluster randomised controlled trial to improve the mental health support and training provided to secondary school teachers (the WISE project)**

Judi Kidger (University of Bristol)

**History of exposure to symptoms of common mental disorder in relation to extended working: British Household Panel Study and Understanding Society**

Gareth Hagger-Johnson (University College London)



**11:40 - 12:40**

**#PHFest2015**

# Parallel Session 2

---

**Well North Workshop: S6**

**First Aid Workshop: S7**

**LT 1**

**Health Promotion and Improvement**

**CHAIR - Angela Spencer**

**Impact of healthcare professionals' (HP) input during pregnancy on positive health behaviour changes**

Aalaa Jawad (North Central Deanery)

**A qualitative study of new parents' and midwives' views on alcohol advice during pregnancy in England and Sweden**

Lisa Schölin (Liverpool John Moores University)

**Exclusive breastfeeding: exploring the complexities of a global issue, with a focus on the UK**

Rosie Conroy (University of Manchester)

**Supporting the physical needs of people with mental illness with a focus on healthy weight and smoking cessation**

Simon Nugent (University of Lincoln)

**LT 2**

**Health Services Research**

**CHAIR - Judith Clegg**

**Health Impact Review of proposed public health savings options in Manchester**

Cordelle Mbeledogu and Neil Bendel (University of Manchester and Manchester City Council)

**Understanding of Female Genital Mutilation (FGM) in the United Kingdom**

Issrah Jawad (London North West Health Trust)

**Population segmentation: An approach to reducing childhood obesity inequalities**

Susan Lowe (Birmingham City Council)

**Financing DevoManc: opportunities for new mechanisms**

Brenda Gannon (University of Manchester)



**13:30 - 14:30**

**#PHFest2015**

# Parallel Session 2

---

**LT 3**

## **Global Health**

### **CHAIR - Dr Paula Whittaker**

**Asylum seekers' perceptions of health and wellbeing in Manchester and what they do when ill**  
Sepeedeh Saleh (University of Liverpool)

**Human Rights and LGBT Public Health: A Global Perspective**  
Megan Corder (University of Manchester)

**Geographical variation and socioeconomic differential in the prevalence of malaria parasitemia among children in Madagascar: a multilevel analysis**  
Olusike Aremu (Soderton University, Stockholm, Sweden)

**Creating wealth through Health - the role of NGOs**  
Nana Nimo Appiah-Agyekum (Leeds Beckett University)

**Understanding the links between women's employment and child nutritional status in rapidly developing economies**  
Stephanie Bispo (University of Southampton)

**LT 4**

## **Health Promotion and Improvement**

### **CHAIR - Emily Parry-Harries**

**Making the case for interventions in Physical Activity within the context of funding driven by economic growth**  
Vincent Goodwin (Sustrans)

**Are inequalities in health still relevant in public health agenda: a qualitative study**  
Mzwandile Mabhala (University of Chester)

**An automated 3D imaging method to select breast implants**  
Stefanie Pohlmann (University of Manchester)

**The impact of activities in green spaces on levels of physical activity**  
Omer Ali (University of Manchester)

**Association between sexual orientation identity and Body Mass Index (BMI) categories: Individual Participant Meta-Analysis of 54,736 individuals from nine health surveys in the UK**  
Joanna Semlyen (London Metropolitan University)



**13:30 - 14:30**

**#PHFest2015**

# Parallel Session 2

LT 5

## Health Protection, Health Promotion and Improvement

**CHAIR - Dr William Welfare**

**Structural Grooming: philanthropy, profit and public health**

Adrian Sutton (University of Manchester)

**What are the barriers of access to Contraception for pre-marital sex and what provisions exist to minimise such barriers? A case study of the young Bangladeshi population in Tower Hamlets**

Julia Miah (University of Manchester)

**An analysis of the epidemiology and resistance mechanisms of Carbapenemase Producing Enterobacteriaceae (CPE) bacteria in Greater Manchester identifying key risk factors for infection and potential pathogen control strategies**

Nicholas Savage (University of Manchester)

**The Experiences of People with Parkinson's Disease in the workplace: The functioning of the Equality Act (2010)**

Harikrishna Vignesh (University of Salford)

LT 6

## Health Promotion and Improvement

**CHAIR - Dr Adam Garrow**

**Third Screen: a project for an interactive newsletter**

Luca Sala (ASL Biella, Biella, Italy)

**Burden of asthma co-morbidity in the UK: secondary analyses of national databases from England, Northern Ireland, Scotland and Wales**

Karim El Ferkh (University of Edinburgh)

**Dynamic longitudinal associations between social support and cognitive function: losing and gaining in late life**

Jing Liao (University College London)

**How economic crisis in Greece reflect on the community social services. The example of the Municipality of Pallini.**

Irini Kounenaki (Municipality of Pallini, Greece)



**13:30 - 14:30**

**#PHFest2015**

# Parallel Session 2

---

S1

## Lightning Lectures 1

**CHAIR - Dr Richard Fitton**

**Understanding adolescent behaviours and child exploitation**

Gabrielle Rabie (University of Chester)

**A public health arts festival has reached 100,000 citizens**

Gail Aldam (Mental Health Foundation, Glasgow)

**Peer support as a public health approach**

Julie Cameron (Mental Health Foundation, Glasgow)

**Public health, stigma and intersectionality**

Lee Knifton (Mental Health Foundation and University of Strathclyde)

**Analysis of the patterns of paediatric trauma in a rural district of Malawi**

Emma Pedlar (University of Manchester)

**An investigation into the perceptions of older people living in urban deprivation of the benefits that community gardening brings to their physical and mental health and wellbeing**

Annette Aiken (Health Watch Bolton)

**Having diabetes and having to fast: Assessing the role of Ramadan-focused structured diabetes education**

Salman Arain (University of Manchester)

S2

## Lightning Lectures 2

**CHAIR - Dr Roger Harrison**

**Human resources for health: plugging the Ethiopian brain drain**

Neil Cockburn (University of Manchester)

**How basic science can contribute to public health—a cardiovascular perspective**

Fatima Saeed (University of Manchester)

**Tooling up for active travel—developing a postal survey research tool for investigating active travel habits**

Jack Dover (University of Manchester)

**The Stop TB strategy: evaluating the global strategy for eliminating tuberculosis as a global health burden**

Joseph Watson (University of Manchester)

**An adapted systematic review on fruit and vegetable consumption and cardiovascular disease risk**

Sohaib Imtiaz (University of Manchester)

**Can humanitarian aid be delivered from a bunker?**

John Pallot (University of Manchester)

**Is exercise counselling an effective way of improving glycaemic control in people with type 2 diabetes?**

Nazmus Khan (University of Manchester)



**13:30 - 14:30**

**#PHFest2015**

# Parallel Session 2

---

S3

## Lightning Lectures 3

**CHAIR - Helen Gollins**

**The impact of green space on obesity and physical activity**

Omer Ali (University of Manchester)

**A critical analysis of health system resilience as a strategy for improved disaster preparedness, in the context of the recent West African Ebola outbreak**

Richard Wilson (University of Manchester)

**Depression as a chronic disabling illness is socially constructed?**

Mehfuz Patel (University of Manchester)

**Assessing humanitarian provision of mental health services for refugees from a rights-based perspective: a case study of Syrian refugees in Lebanon**

Andrew Fell (University of Manchester)

**'Will I Give My Baby HIV?' - A review of the prevalence and prevention of vertical transmission of HIV in the developing world**

Caitlin Sheehy (University of Manchester)

**Intimate partner violence and mental health**

Katie Macnaughton (University of Manchester)

**Anorexia nervosa: a Western construct**

Tasneem Bangi (University of Manchester)

**Shisha: a growing health epidemic**

Robert McTear (University of Manchester)

**Follow us on Twitter**

**@festivalofphuk**

---

**#PHFest2015**



**13:30 - 14:30**

**#PHFest2015**

# Poster Presentations

## CHROMO ZONE

### **Health Inequalities in Cardiovascular Disease (CVD) for People of African and Caribbean Descent: A Review of the Literature**

Faye Bruce (Manchester Metropolitan University)

### **Evaluation of a secondary school violence prevention workshop**

Madeleine Cochrane (Liverpool John Moores University)

### **Using Patient Participation Groups to Improve General Practice Services: A Service Evaluation**

Neil Cockburn (University of Manchester)

### **Exclusive Breastfeeding: Exploring the complexities of a global issue with a focus on the UK**

Rosie Conroy (University of Manchester)

### **Changing trends in sport-related trauma: Has there been an increase since the Olympic Games in London 2012?**

Danielle Cowlin (University of Manchester)

### **The extension of Liberty in Nuffield Council's Public Health report**

Sebastian Fonseca (University College London)

### **Is the World Health Organization a sufficient intergovernmental body to meet global health challenges?**

Sebastian Fonseca (University College London)

### **Sudden Infant Death Syndrome: what do we know?**

Chloe Start (University of Manchester)

### **Health and wellbeing for Army Medical Reservists - combining military and civilian skills**

Ruaraidh Hill (Ministry of Defence)

### **Using Lifestyle Advice in Patient Information Leaflets to Decrease the Risk of Patients Having a Second Myocardial Infarction**

Dillon Horth (University of Manchester)

### **Assessing The Relationship Between Alcohol Consumption And Risky Sexual Behaviour Among Young People**

Charles Iquatt (University of Salford)

### **GULP 'Give Up Loving Pop'**

Robin Ireland (Health Equalities Group)



**13:00 - 13:30**

**#PHFest2015**

# Poster Presentations

## CHROMO ZONE

### **Improving the quality of junior doctors' induction**

Aalaa Jawad (North Central Deanery)

### **Television-based health promotion in General Practice waiting rooms: a cross-sectional study evaluating knowledge and intentions to access dental services**

Mohammed Jawad (University of Southampton)

### **Water pipe industry products and marketing strategies: analysis of an industry trade exhibition**

Mohammed Jawad (University of Southampton)

### **Future dentists - new emphasis on sustainability and social responsibility**

Vitalia Kinakh (University of Manchester)

### **Knowledge, attitudes and beliefs towards water pipe tobacco smoking and electronic shisha ('e-shisha') among young adults in London: a qualitative analysis**

Shrinal Kotecha (University College London)

### **Can mobile communication be used to increase health promotion impact in the developing world?**

Rebecca Laidlaw (University of Strathclyde)

### **Understanding the alcohol harm paradox: A booster survey to examine alcohol consumption of a homeless population**

Ellie McCoy (Liverpool John Moores University)

### **Global Mental Health: A Global Collaboration or Western Imperialism?**

Christopher Meechan (University of Manchester)

### **What are the Barriers to the access of Contraception for Pre-marital Sex and what Provisions exist to minimise such Barriers? A Case Study of the young Bangladeshi Population in Tower Hamlets**

Julia Miah (University of Manchester)

### **Are the reasons for non-uptake of the MMR vaccine being documented in an inner city GP practice?**

Julia Miah/Amal Samsuddin (University of Manchester)

### **The role of the Web in initiating and maintaining help-seeking for symptoms of lung cancer**

Julia Mueller (University of Manchester)



**13:00 - 13:30**

**#PHFest2015**



# Poster Presentations

## CHROMO ZONE

**Dyspepsia management and proton pump inhibitor prescribing: improving patient outcomes and cutting costs for GP practices.**

Iain Murphy (University of Manchester)

**Public Health in Rural Cambodia: An exploration of Volunteer Community Health Workers using Photo voice Techniques**

Kim Ozano (Liverpool John Moores University)

**A pilot study exploring primary care involvement in re-engaging patients with the Bowel Cancer Screening Programme who have tested positive on FOBT screening but failed to complete colonoscopy**

Shenna Paynter (Public Health England)

**Relationship between employees' psychological wellbeing, eating behaviour and nutritional status: A self-determination theory perspective**

Marissa Pendlebury (Liverpool John Moores University)

**Variability of factors affecting discharge after fractured neck of femurs: can clinical commissioning groups affect performance?**

Martin Sharrock (University of Manchester)

**Women as peace-builders: Addressing GBV in Colombia**

Amy Smith (University of Manchester)

**A longitudinal study of the relationship between dental caries and obesity in late childhood and adolescence.**

Emma Hall-Scullin (University of Manchester)

**Knowledge on essential new-born care of mothers: contributes to achieve Millennium Development Goal 4**

Zinia Doza (BRAC, Bangladesh)

**Screening distress in patients with NCD in PHC organizations ALMATY, KAZAKHSTAN.**

Vladimir Kolodin (Kazakhstan School of Public Health)

**Assessment of cardiovascular risk factors among fresh undergraduate students of Obafemi Awolowo University, ILE-IFE**

Oluseye Okunola (Obafemi Awolowo University)



**13:00 - 13:30**

**#PHFest2015**

**MANCHESTER**  
1824

The University of Manchester

Master of Public Health (MPH) and Research  
(MRes Public Health and Primary Care)

*To further your career, we do what you need*



***Join a stand-out University in a stand-out city  
...from anywhere in the world***

### ***A Greater University***

- 25 Nobel Laureates
- The largest single-site university in the UK
- The UK's largest student community
- 9 out of 10 graduates enter straight into employment
- The 8<sup>th</sup> ranked University in Europe

### ***A Greater Manchester***

The world's first:

- Industrial city
- Modern computer
- Passenger railway
- Free public library
- Public Police Force
- Commercial canal
- Professional football (soccer) league

*"The masters in Public Health gave me the opportunity to gain a deeper understanding of health issues related to a variety of health care in general, allowing me to expand my horizon and change my perspective."* Annemarie Wendicke – Research Support – Hawaii, USA

The University of Manchester's Masters of Public Health (MPH) and Research (MRes Public Health and Primary Care) meets the training needs for health professionals interested in a career in public health, primary care or for those looking to develop new skills in these fields. The programme is delivered online allowing you to study flexibly at a pace that suits your requirements. We also offer a residential conference, short online induction sessions, blended learning and a thriving student ambassador programme.

Email [pgt.medicine@manchester.ac.uk](mailto:pgt.medicine@manchester.ac.uk) for more information,  
or call +44 (0)161 275 1648

# Exhibitions



University of  
**Salford**  
MANCHESTER

**NHS**  
*National Institute for  
Health Research*

Health  
Information &  
Resources  
Library

**NHS**  
*Blood and Transplant*



Manchester Mental Health **NHS**  
and Social Care Trust  
A University Teaching Trust



CANCER  
RESEARCH  
UK

The International Festival of Public Health UK would like to give special thanks to this year's exhibitors:

Roy Castle Lung Cancer Foundation, MSc Public Health programme at the University of Salford, Research Design Service North West, Health Information & Resources Library, Recycling Lives, AN Computing, NHSBT Patient Blood Management Team, Manchester Mental Health and Social Care Trust, University of Manchester Master of Public Health, Manchester Urban Collaboration on Health, Oxford University Press, Anaphylaxis Campaign, Cardiac Risk in the Young, Haelo, Salford Samaritans, Our Life, MedAct, Ketso, Intergen, Cancer Research UK, and University of Manchester First Aid

MANCHESTER  
1824

The University of Manchester



We would like to thank our delegates, speakers, presenters, exhibitors, and chairpersons, without whom, none of this would be possible.

Please contact us on [much@manchester.ac.uk](mailto:much@manchester.ac.uk)

**International**  
**Festival of**  
**Public Health**  
**2015**  
**UK**

**[www.festivalofpublichealth.co.uk](http://www.festivalofpublichealth.co.uk)**

In association with [cities@manchester](mailto:cities@manchester) and Manchester Medical Society

[www.manchester.ac.uk/much](http://www.manchester.ac.uk/much)

[www.mhs.manchester.ac.uk/postgraduate/programmes/taughtmasters/ph/](http://www.mhs.manchester.ac.uk/postgraduate/programmes/taughtmasters/ph/)

[www.urhis.eu](http://www.urhis.eu)

[www.uhce.eu](http://www.uhce.eu)

[www.facebook.com/ManchesterMPH](https://www.facebook.com/ManchesterMPH)

[@eurourhis2](https://twitter.com/eurourhis2)

[@manchestermph](https://twitter.com/manchestermph)

[www.youtube.com/user/manchestermph](https://www.youtube.com/user/manchestermph)



**#PHFest2015**

