

# An Introduction to Saint-Gobain

UK & Ireland

---



Ecophon Solo Rectangle,  
printing by customer





# CONTENTS

---

**05/** Saint-Gobain Approach

**07/** Our Brands

**14/** Projects Across the UK & Ireland

**15/** Solutions for Buildings

**17/** Innovative Solutions

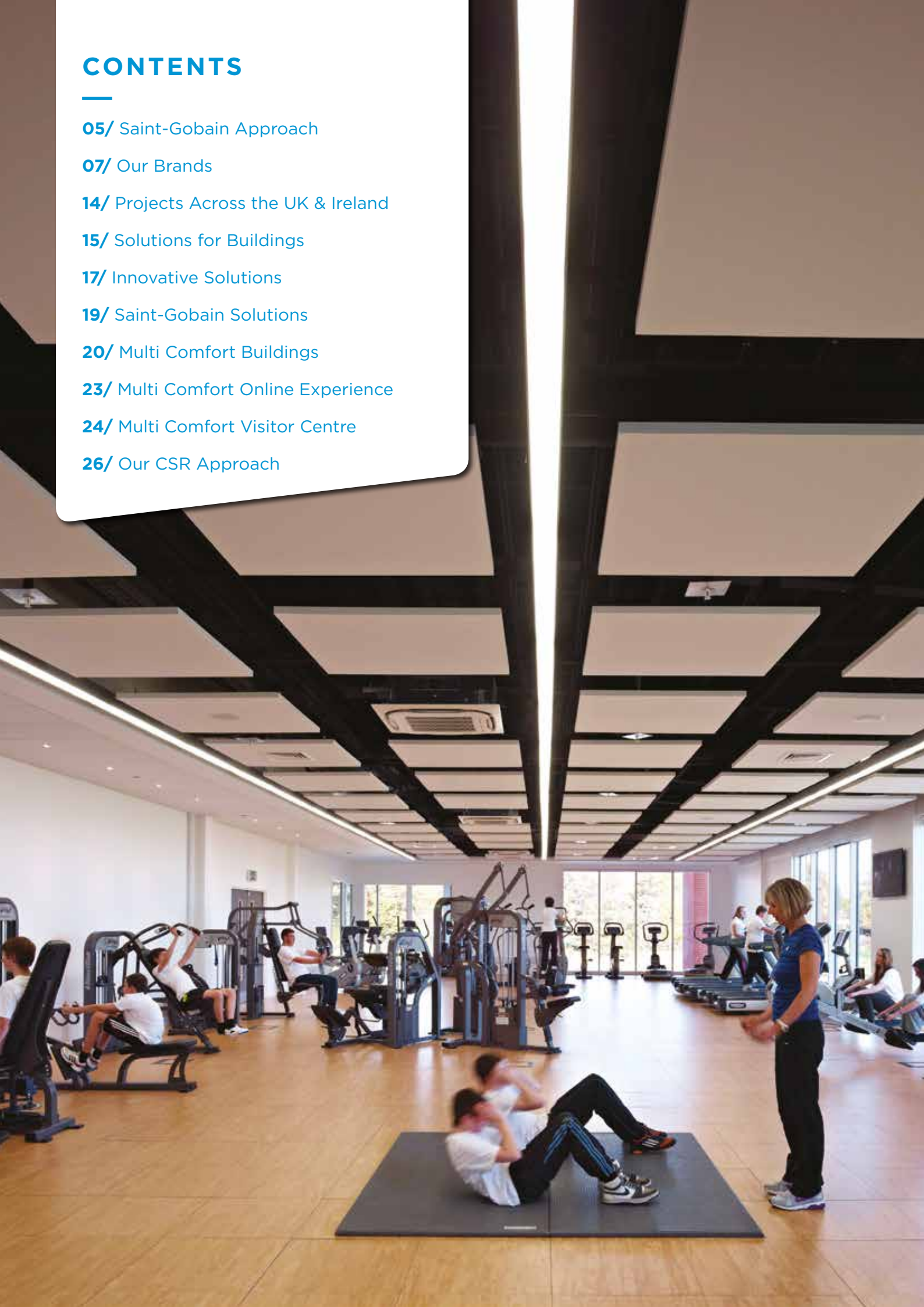
**19/** Saint-Gobain Solutions

**20/** Multi Comfort Buildings

**23/** Multi Comfort Online Experience

**24/** Multi Comfort Visitor Centre

**26/** Our CSR Approach



**As a business, Saint-Gobain designs, manufactures and distributes materials and solutions, which are key ingredients in the wellbeing of each of us and the future of all.**

These ingredients can be found in our living places and our daily life: in buildings, transportation, infrastructure and in many industrial applications. They provide comfort, performance and safety, while addressing the challenges of sustainable construction, resource efficiency and climate change.

Saint-Gobain is present in 68 countries and employs over 180,000 people worldwide, including over 17,000 in the UK & Ireland. It was founded in 1665 to deliver a world first – the production of glass on an industrial scale – and has continued to grow its business through adapting and innovating to provide new services, products and ways of working with customers.

**34** brands in the UK and Ireland

**400,000** products

**1,100+** retail sites

**45+** manufacturing plants

over

**17,000** employees in the UK and Ireland



---

## OUR MISSION

To create great living places and improve daily life.

---

## OUR PROMISE

To enhance the wellbeing of people everywhere.

---

## OUR VALUES

Saint-Gobain sets out its values in its General Principles of Conduct and Action which is applied in every business.

Adherence to these principles are a requirement to being part of the Saint-Gobain group.

---

## OUR PRINCIPLES

### Of Conduct:

- Professional commitment
- Respect for others
- Integrity
- Loyalty
- Solidarity

### Of Action:

- Respect for the law
- Caring for the environment
- Worker health and safety
- Employee rights.

Bartholomew Barn, King's School, Worcester  
Saint-Gobain's first Multi Comfort building in the UK.

# INNOVATION

AT SAINT-GOBAIN

Never before has the need for the construction industry to innovate in order to meet the challenges of creating a truly sustainable building been more important.

Research, development and innovation are at the heart of our strategy, ensuring we explore new horizons and help our customers to grow their own businesses.

**1** PRODUCT  
OUT OF **4**

SOLD TODAY BY SAINT-GOBAIN  
DID NOT EXIST 5 YEARS AGO

**354**

YEARS OF EXPERIENCE

ONE OF THE TOP

**100**



MOST INNOVATIVE COMPANIES  
IN THE WORLD\*

**3,700**



EMPLOYEES ENGAGED IN R&D ACTIVITIES

**7** INTERNATIONAL  
CROSS BUSINESS  
CENTRES



## We've a long history of being first

Here's a selection of recent examples...

### 2009

1st to launch a ductile iron pipe range free from cement mortar lining.

1st to be awarded the Prince Michael of Kent International Road Safety Award for its range of GripTop high friction antiskid access covers.

### 2009/10

1st to manufacture insulation from 86% recycled glass.

### 2012

1st manufacturer of insulated fire glass in the UK.

### 2013

1st glass manufacturer to achieve BES 6001 "Very Good" rating for UK-made products.

1st PIR manufacturer to launch its entire product range as BIM objects in all major formats.

### 2015

The launch of Saint-Gobain's Multi Comfort building standard in the UK.

### 2016

The opening of Bartholomew Barn at the King's School in Worcester. Saint-Gobain's first Multi Comfort building in the U.K.

Saint-Gobain in Scotland is working in partnership with CMS Window Systems, in a closed-loop collaboration to recycle and reuse unwanted glass.

### 2018

Introduction of the first plasterboard recycling service in Ireland.

# A UNIQUE CAPABILITY TO PROVIDE PRODUCTS AND SOLUTIONS FOR INDUSTRY

---

Some of the best known and respected brands are part of the Saint-Gobain family of businesses. They include British Gypsum, Isover, Glassolutions, Saint-Gobain Weber, Saint-Gobain Glass, Saint-Gobain PAM, Pasquill and Ecophon.

We have over 45 manufacturing sites across the UK & Ireland. We produce and distribute a range of high performance products and solutions that contribute to a more sustainable built environment, including:

- Acoustic and thermal insulation
- Energy-efficient glass and glazing solutions
- Industrial and construction mortars, fixings and façades
- High-performing plastics, ceramics and abrasives
- Premier ductile and cast iron pipes.



Exhibition Centre, Liverpool

# GLASS FOR BUILDING AND ARCHITECTURE

---



Saint-Gobain Glass manufactures innovative and environmentally-friendly flat glass products to serve a range of construction markets.



The largest processor and distributor of glass and glazing systems in the UK.

## OSS (OFF-SITE SOLUTIONS)

---



Specialises in the supply of timber engineering products to different sectors of the construction industry.



Designer, manufacturer and installer of panelised roofing systems throughout the UK.



Scotframe Timber Frame homes manufacture and supply timber frame kits from factories located in Scotland.



**International  
TIMBER**

The UK's leading Timber & Panel Importer, a group of specialists in: Hardwoods & Clears, Panel, Softwood, Engineered and Cladding timber solutions.

## MANUFACTURING FOR CONSTRUCTION

---



100 years of creating room for better living. Creative solutions for internal spaces – interior dry lining systems, inspirational guidance, trusted technical know-how and training. Plaster, plasterboard, ceilings, metal framing, fixing and finishing products.



Artex distributes a wide range of construction products from market leading brands such as Gyproc and Thistle. From fillers and plasters to plasterboards and tools, we supply both trade and retail customers through our flexible nationwide delivery, including 48 hour parcel service.



Ireland's market leader in plaster, plasterboard and drylining systems, manufacturing since 1936.



Manufacturer, innovator and solution provider of easy-to-apply products in the construction mortars, façades, flooring systems and tile-fixing markets.



# DISTRIBUTION OF MATERIALS FOR CONSTRUCTION, RENOVATION & INFRASTRUCTURE

---

Saint-Gobain's building distribution businesses comprise of 1,100 retail sites in the UK & Ireland, spanning an unparalleled breadth of general and specialist builders' merchants and distributors.

We supply a range of general building materials including; tiling, ground works materials, laminates, flooring, timber and decorative surfaces to building professionals, self-builders, large and small construction companies and the public.

## GENERAL MATERIALS

---



With branches from the Scottish Isles to Penzance, you're never far away from great service, expert advice and the highest quality timber, building materials and services.



Gibbs & Dandy builders and timber merchant founded over 170 years ago with a network of over 30 branches serving professionals in the local building trade.



Founded in 1814 and supplies everything the customer needs for their building project, from below ground to the finishing products.



Benchmark Building Supplies are a north west of England based builders merchant, trading from seven locations around Greater Manchester. The fleet of eleven vehicles deliver more than 100 drops a day, supplying over 1,200 construction companies of varying sizes.



Home of high quality professional power tools.



Chadwicks is a leading supplier to the Flyde Coast building and construction industry offering more than 10,000 products to choose from.



Matthew Charlton is a UK based supplier of building, plumbing, home improvement and DIY products.



Normans provide a fully comprehensive range of products and materials to the building industry from their two branches in Jersey.



Trading since 1923, Roger W. Jones is now part of Jewson and offers one of the largest kitchen and bathroom showrooms in North Wales.

## PLUMBING / HEATING / BATHROOM



Established over 80 years ago, Graham is the leading distributor in heating & spares, plumbing & plastics, bathrooms and renewable products. Graham has over 185 branches operating at a local family level across the UK, with outstanding customer service, knowledgeable staff, unbeatable product availability and unrivalled value for money.



Established in 1982, and spanning 15 branches across Northern Ireland, Bassetts specialises in bathrooms and heating, supplying everything from plumbing parts and accessories to contemporary bathroom suits and furniture.



DHS are based in Guernsey specialising in the supply and design of heating and bathroom systems.



Established in 1981, Ideal Bathrooms is the UK's leading specialist distributor of bathroom products, providing next day delivery to 99% of the UK.



Established in 1882, Neville Lumb is a leading provider of bathroom and washroom solutions to the commercial, domestic and luxury markets. A combination of knowledge and experience, as well as national coverage and extensive product ranges, has helped them win some of the UK's most prestigious projects.

## TILING / FLOORING / SURFACES



The UK's number one distributor of ceramic tiles, supplying all sectors of the tiling market.



The UK's largest distributor of decorative surfaces specialising in flooring, worktops, laminates, compact, panel products, solid surface and wall panelling. 13 regional branches offer the benefits of nationwide coverage, while being especially responsive to needs at a local level.

## INSULATION UK



The UK's leading manufacturer of premium performance PIR insulation. High performance PIR insulation solutions suitable for roof, floor and wall applications in residential and non domestic buildings.



Develops sustainable insulation solutions to protect both your built environment and the natural environment.

# SPECIALIST INCLUDING: TIMBER / INSULATION / DRY LINING / CIVILS AND IRONMONGERY



The UK's largest networked distributor of architectural ironmongery and a principal specifier and supplier of commercial timber doorsets and ancillary products. Endorsed by RIBA.



One of the oldest and most well respected names in the UK pressure treated timber sector.



Leading supplies of poles, sleepers and post and rail fencing.

## CONTRACTS DIVISION



Leading supplier of construction materials to Civils and Utility Contractors.



The fastest growing specialist distributor of insulation and dry lining materials in the UK. This has been achieved by offering unrivalled service, expertise and product availability.



A network of Jewson branches across the UK that focus on products for ground-works and major infrastructure projects.

## SERVICES



Build Aviator offers a range of services designed to assist with compliance and offer support to everyone involved in the house building process from concept to completion.



Pathfinder House, Huntingdon

# SAINT-GOBAIN BRANDS, PRESENT IN THE UK & IRELAND BUT OPERATING GLOBALLY

Saint-Gobain has several global brands which also are present in the UK – these brands manufacture products which are construction specialities or high performance solutions. Discover more about these brands below:

## CONSTRUCTION SPECIALITIES



A leading supplier of acoustic suspended ceilings, free-hanging units and wall absorbers in the UK & Ireland. Solutions for all sectors, including education, health, office, industry and retail.



A world-leading supplier of industrial plaster and gypsum products with high performance solutions for Fibrous and Decorative Plasters, Construction Materials, Ceramics, Dental and Personal Care and Food, Agriculture and Environment markets.



Manufacturer of elastomeric insulation materials for the technical pipe insulation in domestic technology, building technology and industry.



Leca® Lightweight Aggregate (LWA) is a natural, unique and sustainable lightweight clay aggregate. Leca® LWA has remarkable properties which ensure its versatility for use in a vast number of structural and geotechnical applications.



Saint-Gobain PAM UK is the premier supplier of ductile iron pipes, fittings, valves and hydrants for the utilities sector, ductile iron access covers and gratings for the highways and telecoms sector and cast iron soil, drain and rainwater systems for the building industry.



Grey iron castings for product standard EN877  
PAM manufacturing site at Telford

# HIGH PERFORMANCE SOLUTIONS



ABRAISIVES / CERAMICS / PERFORMANCE PLASTICS / LIFE SCIENCES



Designing and producing innovative textile solutions for reinforcement in the habitat and industrial markets, thanks to knowledge built over the past 50 years.



Farécla Products Ltd is a manufacturer of surface finishing products which are used on a wide variety of substrates from compounds and applicators, to paint cups and microfibre cloths.



Industrial performance abrasive solutions for cutting, grinding and sanding to polishing for the metal fabrication foundry, rail, construction and hardware, marine and energy industries.



The world leader in abrasives for over 130 years, providing the widest portfolio of cutting, grinding, blending, finishing and polishing solutions for all markets, materials and applications.



Designs and manufactures tolerance rings (radial spring fasteners) for the automotive, hard disk drive and appliance markets.



SWISSPACER's warm edge spacer bars insulate the edges of an energy efficient sealed unit, keeping the panes of glass apart and maintaining the integrity of the air gap that insulates a building from heat loss through windows.



Vetrotech fire resistant glass offers the ultimate protection for people and property, while providing the aesthetic and multi-comfort qualities you expect from architectural glass.



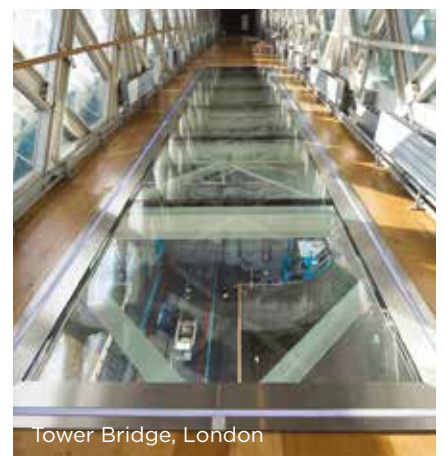
Provides diamond abrasive solutions for cutting, drilling, milling, bevelling and grinding of flat glass.



A manufacturer of acoustic and thermo-acoustic insulation products for diverse applications in the Automotive, Industrial and Comfort sectors.

# SAINT-GOBAIN PROJECTS ACROSS THE UK & IRELAND

---



# SOLUTIONS FOR BUILDINGS

---



As the world's largest provider of materials and construction technologies, Saint-Gobain creates and delivers innovative, high-performance solutions that make buildings great places to live, work and play in.

---

Our brands offer a wealth of solutions for the renovation and construction of homes, offices, schools, hospitals and other commercial buildings.

These solutions (especially those using glass, insulation, plasterboards, façades and floor covering mortars) are helping to create energy efficient and comfortable buildings, making a positive contribution to people's productivity, health and sense of wellbeing.

To find out more visit [www.saint-gobain.co.uk/brands](http://www.saint-gobain.co.uk/brands)



Bartholomew Barn at the King's School in Worcester is Saint-Gobain's first Multi Comfort building in the U.K.



For more than 350 years, Saint-Gobain has pioneered the development of innovative materials that shape the way we live.

The construction sector has faced many changes to Building Regulations in recent years, particularly in the area of the Conservation of Fuel and Power, and Energy as the UK and Ireland aims to reduce carbon dioxide emissions by boosting the energy saving performance of buildings.

We focus our innovative solution approach on the requirements of the construction market, by sector. We identify where, and how joined up solutions from Saint-Gobain can offer additional value to our construction customers. Our innovative solutions will vary from sector to sector but will always combine best in class materials plus an element of Saint-Gobain uniqueness to offer a novel solution to many of the issues facing the market today.

Saint-Gobain solutions focus, first and foremost, on external building fabric solutions. Ensuring a high-performance building fabric is the first step to delivering building comfort to users and delivering an energy efficient solution that will also minimise impact on the environment. These high-performance, unique solutions are then complemented by the vast array of internal linings, finishes and fixtures available from the innovative brands of Saint-Gobain.



# INNOVATIVE SOLUTIONS

Saint-Gobain UK and Ireland focus our innovative solution approach on the requirements of the construction market, by sector. We identify where and how, joined up solutions from Saint-Gobain can offer additional value to our construction customers.

Our innovative solutions will vary from sector to sector but will always combine best in class materials plus an element of Saint-Gobain uniqueness to offer a novel solution to many of the issues facing the market today, such as:

- Increasing performance requirements, particularly thermal and airtightness
- The gap between designed performance and actual performance 'as-built'
- Constrained supply, particularly in UK Housing
- Skills shortage to construct at speed using traditional building methods
- Increasing sustainability requirements for all projects



*Saint-Gobain's Off-Site Division combines expertise from our Scotframe, Pasquill, Roofspace and International Timber brands to offer off-site solutions to customers – making site construction more efficient and quicker.*

*We provide a range of solutions including full timber frame buildings, roofing solutions, and closed and open steel frame panelised products. Our technical experts can help develop the right solution for your project.*



In 2016, Saint-Gobain UK and Ireland introduced the first external wall solution for medium rise multi occupancy buildings - Saint-Gobain Frame System **(SGFS)** is the first of our Engineered Solutions for the UK construction market, as a solution to the above market issues.



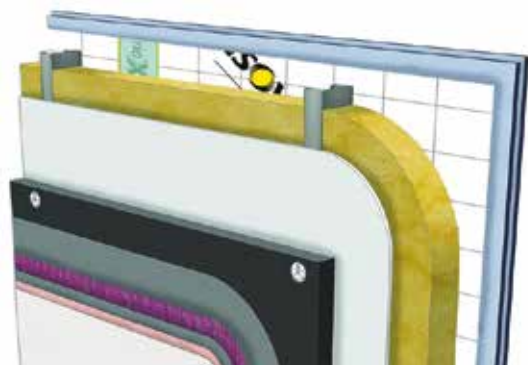
## Saint-Gobain Frame System (SGFS)

SGFS is a pre-panelised structural steel frame system, that provides complete loadbearing external and internal wall panels, comprising lightweight Hadley Steel Framing sections encapsulated and insulated with market-leading Saint-Gobain products.

**SGFS** offers medium-rise multi-occupancy projects with complete flexibility to suit the varying designs of apartments, hotels, student accommodation and other buildings. SGFS can be supplied either in Open Panel or Closed Panel configuration.

- **SGFS Open Panel:** Loadbearing steel frame panels, bolted together off-site, delivered then fixed into place with concrete or pre-panelised steel joist floors providing the complete medium-rise multi-occupancy building superstructure.

- **SGFS Closed Panel:** Loadbearing steel frame panels, bolted together off-site with insulation and external sheathing board ready-assembled, creating a weather-tight medium-rise multi-occupancy building and superstructure building shell in less time.



**SGFS** can be finished with traditional masonry, rain screen or Weber insulated render finishes, and bespoke designed interlinking timber roof options from Pasquill.

**SGFS** is the first in a series of increasingly advanced off-site manufactured solutions that answer the issues facing today's market challenges.

**ENGINEERED  
SOLUTIONS**

by Saint-Gobain

# SAINT-GOBAIN SOLUTIONS

To suit the requirements of our construction customers, we offer three performance levels of external building fabric solutions:



We have a one-time opportunity with the construction of new buildings to create great places to be. Our 'Fabric First' approach to construction, prioritises the performance of a building's fabric and services. This approach will not only increase the energy performance of that building over its whole lifetime, it will also provide a building that is comfortable to be in, improving people's daily life.

**Fabric First Solutions by Saint-Gobain** demonstrate how trusted Saint-Gobain branded products may be combined to offer external fabric solutions including Masonry Walls, Timber Frame Walls, Floors and Roofs that are not only a good route to building regulation compliance, but will ensure a comfortable experience.

In addition to meeting the demands of Thermal Building Regulations with solutions that use a 'Fabric First' approach to building, the specification of external fabric solutions including Masonry Walls, Timber Frame Walls, Floors and Roofs can incorporate higher performing Saint-Gobain branded products to provide additional user comfort.

**Closer to Comfort by Saint-Gobain** gives you options to substitute products from the 'Fabric First' Solutions, instead opting for products that will move the building user Closer to Comfort in the areas of Thermal Comfort, Audio Comfort, Visual Comfort and Indoor Air Comfort.

The Multi Comfort concept is about building and renovating our homes, offices, schools, hospitals and other buildings in a way that gives us improved comfort and wellbeing whilst protecting the environment.

Multi Comfort buildings also provide an affordable building, in terms of the whole life cycle of the building.

There are four main considerations that affect people's perception of comfort inside buildings. The correct balance of Thermal Comfort, Acoustic Comfort, Visual Comfort and Indoor Air Comfort in the design of buildings, gives places that improve comfort, health and wellbeing.

Experience more at: [www.multicomfort.co.uk](http://www.multicomfort.co.uk)

# MULTI COMFORT BUILDINGS

---

## A good building can change your life

---

Like eating well and exercising, buildings can make us feel good and live well. We spend up to 90% of our time inside buildings; therefore, buildings should be designed for us! From family living at home, productive working in an office, providing customer service in a call centre, caring for the ill in hospitals, educating people in schools or making things in factories, creating comfortable conditions is critical to our happiness and productivity.

The Multi Comfort concept is about building and renovating our homes, offices, schools, hospitals and other buildings in a way that gives us improved comfort and wellbeing whilst protecting the environment.

Multi Comfort buildings incorporate the Passive House standard so have a very low energy demand and provide the ultimate Thermal Comfort. In addition, Multi Comfort buildings provide high levels of Acoustic Comfort, creating a sound environment, enhanced Visual Comfort offering optimum levels of natural daylight and connection with the outdoors, plus improved Indoor Air Comfort, increasingly important as we become more urban and our buildings are surrounded by busy roads, on flight paths or in higher pollution areas.





Feel

**THERMAL  
COMFORT**

Determined by  
external view, light  
quality, luminosity,  
glare, etc.

Hear

**ACOUSTIC  
COMFORT**

Determined  
by noise from  
outdoors,  
vibrations, clarity  
of hearing,  
intelligibility  
of speech, etc.

See

**VISUAL  
COMFORT**

Determined by  
external view, light  
quality, luminosity,  
glare, etc.

Breathe

**INDOOR AIR  
COMFORT**

Determined by  
indoor air quality  
parameters such  
as fresh air supply,  
pollutants, odours,  
etc.



## Comfort in buildings

Multi Comfort buildings have temperatures of relative stability, not too hot or too cold, so we can be comfortable whatever we're doing. Multi Comfort buildings have the right type and right amount of light, not too much with glare or too little to see effectively for all our different tasks, from working with screens to bedtime reading. Multi Comfort buildings protect us from unwanted noise from outside and neighbouring buildings and from those sounds inside other parts of our own buildings. They are also balanced acoustically so that the sounds we want and need to hear are crystal clear. In Multi Comfort buildings, indoor air is always fresh and clean, with reduced humidity and unwanted odours.

Feel

THERMAL  
COMFORT

### Multi Comfort buildings...

- Use very little energy to stay warm without radiators
- Keep your ideal indoor temperature all year round
- Have walls that are warm to the touch
- Have no draughts, even on the floor

Hear

ACOUSTIC  
COMFORT

### Multi Comfort buildings...

- Protect you from noise – outside and inside
- Mean you can make noise without disturbing others
- Enjoy an improved level of ambient noise
- Control noise reverberation and increase speech intelligibility making sound places to work and learn

See

VISUAL  
COMFORT

### Multi Comfort buildings...

- Are full of natural light without glare
- Have rich colours and make close-up work easy from even light distribution
- Bring the outdoors inside, connecting you with nature to make you feel good

Breathe

INDOOR AIR  
COMFORT

### Multi Comfort buildings...

- Keep outdoor pollution outside
- Have a constant supply of clean, fresh air
- Never feel stuffy nor damp in the air
- Actively break-down impurities from indoor air

We spend up to

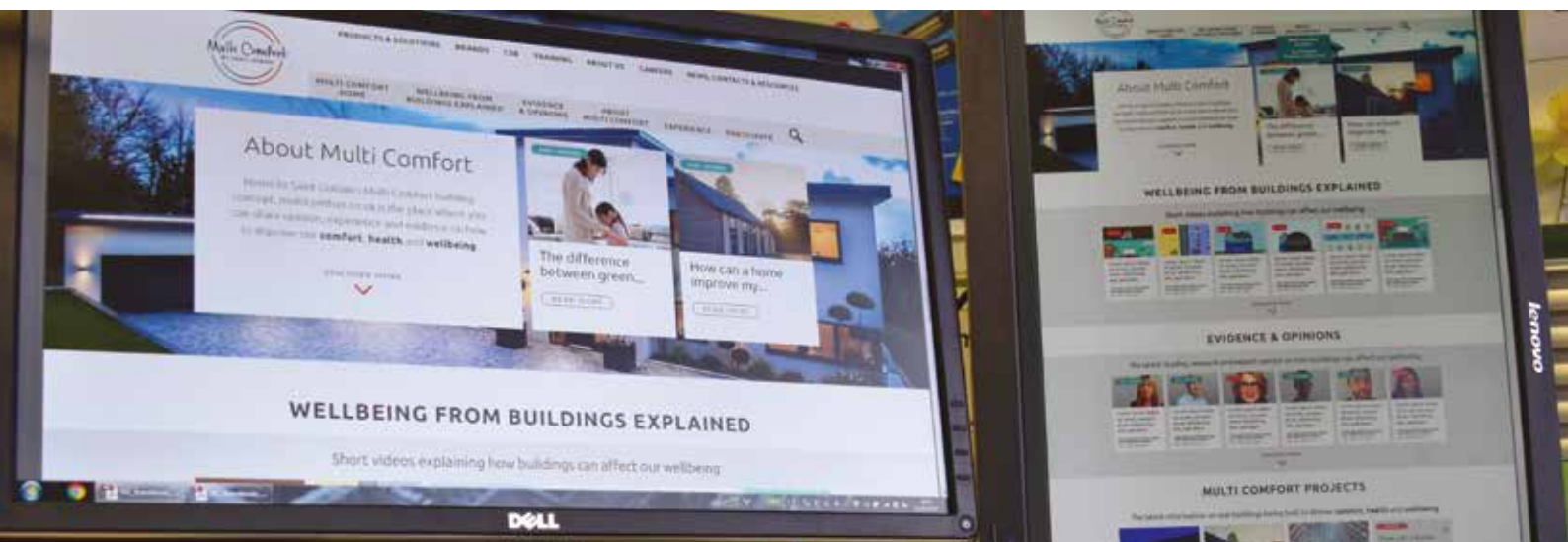
**90%**  
of our time indoors;  
therefore, buildings  
should be designed  
for us

The Multi Comfort concept can be applied to all building types; from homes to offices, schools and hospitals, we can help you design a building that improves your comfort and wellbeing.

For more information and case studies of real Multi Comfort buildings, please visit:  
[www.multicomfort.co.uk](http://www.multicomfort.co.uk)

# MULTI COMFORT ONLINE EXPERIENCE

---



## [www.multicomfort.co.uk](http://www.multicomfort.co.uk)

---

Our online experience is the platform to share ideas on how to improve our comfort and wellbeing through a better built environment.

Home to our Multi Comfort concept, [www.multicomfort.co.uk](http://www.multicomfort.co.uk) is the place where you can share opinions, experiences and evidence on the topic. It provides a place where people can find out the latest on comfort and wellbeing in buildings.

Sign-up today for the latest on how a better built environment can make us feel good and live well at:

[www.multicomfort.co.uk](http://www.multicomfort.co.uk)



# SAINT-GOBAIN MULTI COMFORT VISITOR CENTRE

---

The Saint-Gobain Multi Comfort Visitor Centre provides an engaging and interactive place for exchange on how a better built environment can improve people's daily life. Book a visit to come and experience what it feels like to be in a Saint-Gobain Multi Comfort building.



## Ready for a virtual reality experience?

---



**Experience buildings that can make you feel good and live well!**

With our Multi Comfort Virtual Environment you can experience Multi Comfort buildings for yourself. Using the latest Oculus virtual reality headset technology you can explore four different Multi Comfort buildings: a home, office, hospital and school.

There is plenty to see and learn, join us for a visit, jump in to the virtual world and feel the comfort.





## Network and training

In addition to launch events showcasing new products, solutions and services from the brands of Saint-Gobain, we also host regular networking and training events:



### Training Tuesdays

Our CPD Training Tuesday events give you a regular opportunity to continue your professional development. Covering a wide range of construction and built environment related topics, you can combine progression with breakfast, lunch or after work canapés.



### Networking Nights

Our Networking Nights enable construction and built environmental professionals the chance to share knowledge and exchange ideas. Each night focuses on a new topic, so you can combine keeping up to date with after work drinks and canapés.



### Launch Events

The construction and built environment sector is experiencing major transformations. Companies must be agile, anticipating future challenges and opportunities. Saint-Gobain places innovation at the heart of its strategy and will host product and solution launch events to showcase our latest developments.



### Meetings

We also have collaborative work spaces including three meeting rooms available for bookings.



The Multi Comfort Visitor Centre  
95 Great Portland Street, London W1W 7NY  
Tel: 020 7323 6576

# OUR CSR APPROACH

Saint-Gobain's CSR strategy builds on our five Principles of Conduct – professional commitment, respect for others, integrity, loyalty and solidarity – and four Principles of Action – respect for the law, caring for the environment, worker health and safety and employee rights. This ensures CSR is integrated across all operations into everyday business and is a core value at Saint-Gobain.

Explore our strategy, performance and case studies:

[www.saint-gobain.co.uk/csr](http://www.saint-gobain.co.uk/csr)

## OUR STRUCTURED APPROACH TO CSR



Saint-Gobain works closely with an advisory panel, comprising of representatives from customers, NGOs and sustainability experts, who have provided critical advice, guidance and feedback on our performance, with a view to progressing Saint-Gobain's CSR strategy.





**Issue Number:** 2

**Issue Date:** May 2019

Every care has been taken to ensure that the contents of this publication are accurate but Saint-Gobain Limited and its subsidiary companies do not accept responsibility for errors or for information which is found to be misleading.

Suggestions for or descriptions of the end use or application of products or methods of working are for information only and Saint-Gobain Limited and its subsidiaries accept no liability in respect thereof. Before using products supplied or manufactured by Saint-Gobain Limited customers should satisfy themselves of their suitability.

**Copyright © 2019 Saint-Gobain Limited**

**Saint-Gobain Limited**

Saint-Gobain House  
Binley Business Park  
Coventry  
CV3 2TT

[www.saint-gobain.co.uk](http://www.saint-gobain.co.uk)



**For further information please contact:**

Richard Halderthay

Telephone: +44 (0)7823 328444

Email: [Richard.Halderthay@saint-gobain.com](mailto:Richard.Halderthay@saint-gobain.com)