

Scottish Natural Heritage

LANDSCAPE INDICATOR

December 2016

LLQ1 Area of National Landscape Designations

This indicator monitors the extent of national landscape designations operating through the planning and related regulatory systems. Protected areas represent the very best of Scotland's landscapes, reflecting centuries of people's influence. Their protection and management will help to ensure that they remain in good health for all to enjoy, both now and for future generations. Landscapes identified as being of national importance are afforded site-based protection in the following ways: National Scenic Areas (NSA); National Parks; Gardens and Designed Landscapes; Battlefields; and/or Scheduled Monuments.



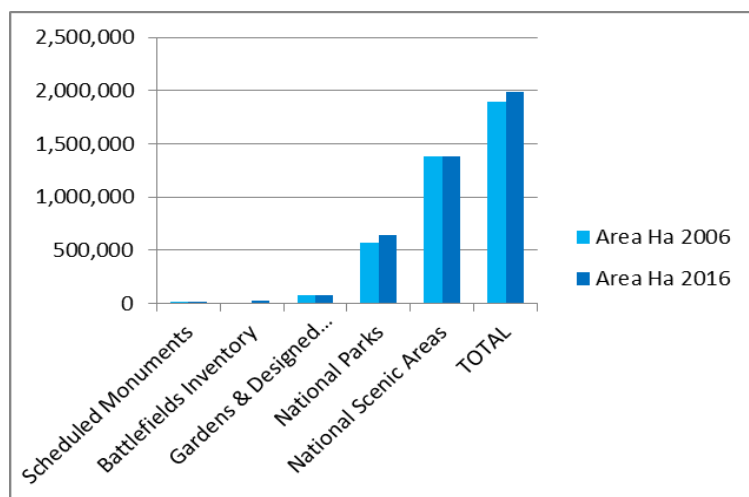
Loch Lomond © Lorne Gill/SNH

Scotland is also home to six World Heritage Sites which, although not formal designations, are cultural and/or natural sites of 'Outstanding Universal Value' across countries and generations.

Evidence

The land area of Scotland is 7,880,800ha (land above MHWS); it is 46,899,400ha including sea area to 200 nautical miles. Spatial data on landscape designations were collated from SNH datasets and others provided by Scottish Government and Historic Environment Scotland. Designated landscape categories may overlap spatially and so the total area is not a simple sum of the individual categories.

Designated landscapes 2016



Area of Scotland covered by landscape designations - all areas are rounded to the nearest 100ha.

Assessment

In 2016 the area of land, and in some cases such as NSAs a small proportion of sea, in Scotland under national landscape protection was as follows:

- 25.2% (1,988,000ha) of land was covered by one or more form of landscape designation;
- 17.5% (1,381,100ha) of land and sea was designated as National Scenic Area (13% of Scotland's land was designated as National Scenic Area).
- 8.1% (639,100ha) of land was designated as National Parks;
- 1.0% (76,500ha) of land was of Inventory of Gardens & Designed Landscapes status;
- 0.3% (27,000ha) of land was of Battlefields Inventory status ;
- 0.2% (18,300ha) of land was of land was scheduled as Scheduled Monuments.

TREND	Increase	DATA CONFIDENCE	High
--------------	-----------------	------------------------	-------------



Commentary

National landscape designations account for some 25.2% (1,988,085ha) of Scotland's land area. The area of designated landscape increased from 24.0% (1,891,387ha), since 2006. This increase in the area of land was predominantly due to the increase in the Cairngorms National Park in 2010 and the creation of the Inventory of Historic Battlefields, a list of nationally important battlefields in Scotland that meet the criteria published in the Scottish Historic Environment Policy 2011.

Looking back a further 10 years we do not have readily accessible data for the areas of all categories of designation in 1996, however we can make a reasonable judgement that approximately 17% of Scotland's landscape was designated in 1996. The area of designation was less because in addition to the Battlefield Inventory not being included, Scotland's two spectacular National Parks, Loch Lomond Trossachs and Cairngorms were also not yet designated, having been created following the National Parks (Scotland) Act of 2002. The National Parks alone added (7.2%) 639,100ha to the area of national landscape designations.

The maps show the areas of Scotland that are covered by national landscape designations and illustrate that we now have more of our landscape protected through national designations and scheduling. Larger maps are available at [Annex 1](#) (2016) and [Annex 2](#) (2006)

Source data and updates

Source datasets, from Scottish Government, Cairngorms National Park, SNH and Historic Environment Scotland, were included in the analysis: National Parks, National Scenic Areas, Gardens and Designed Landscapes, Scheduled Monuments and Battlefield Inventory.

The indicator will be reviewed in 2021, and then on a five year cycle.

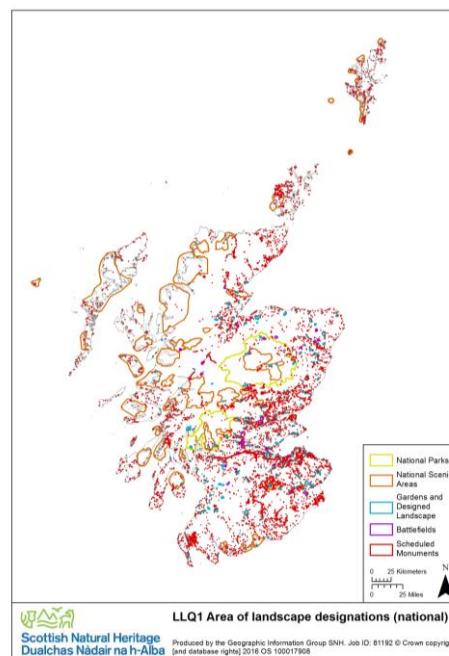
We intend to develop a complementary indicator monitoring change in the extent of Local Landscape Designations.

UK indicators

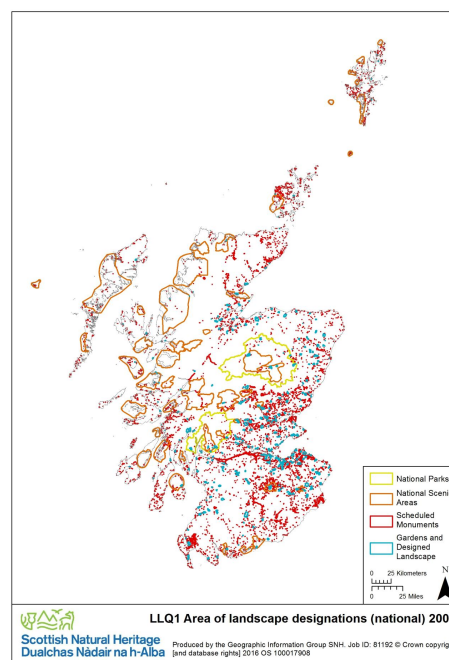
There is no directly comparable UK indicator; however, the Protected Areas indicators within the suite of [UK Biodiversity Indicators](#) relate to components shown here.

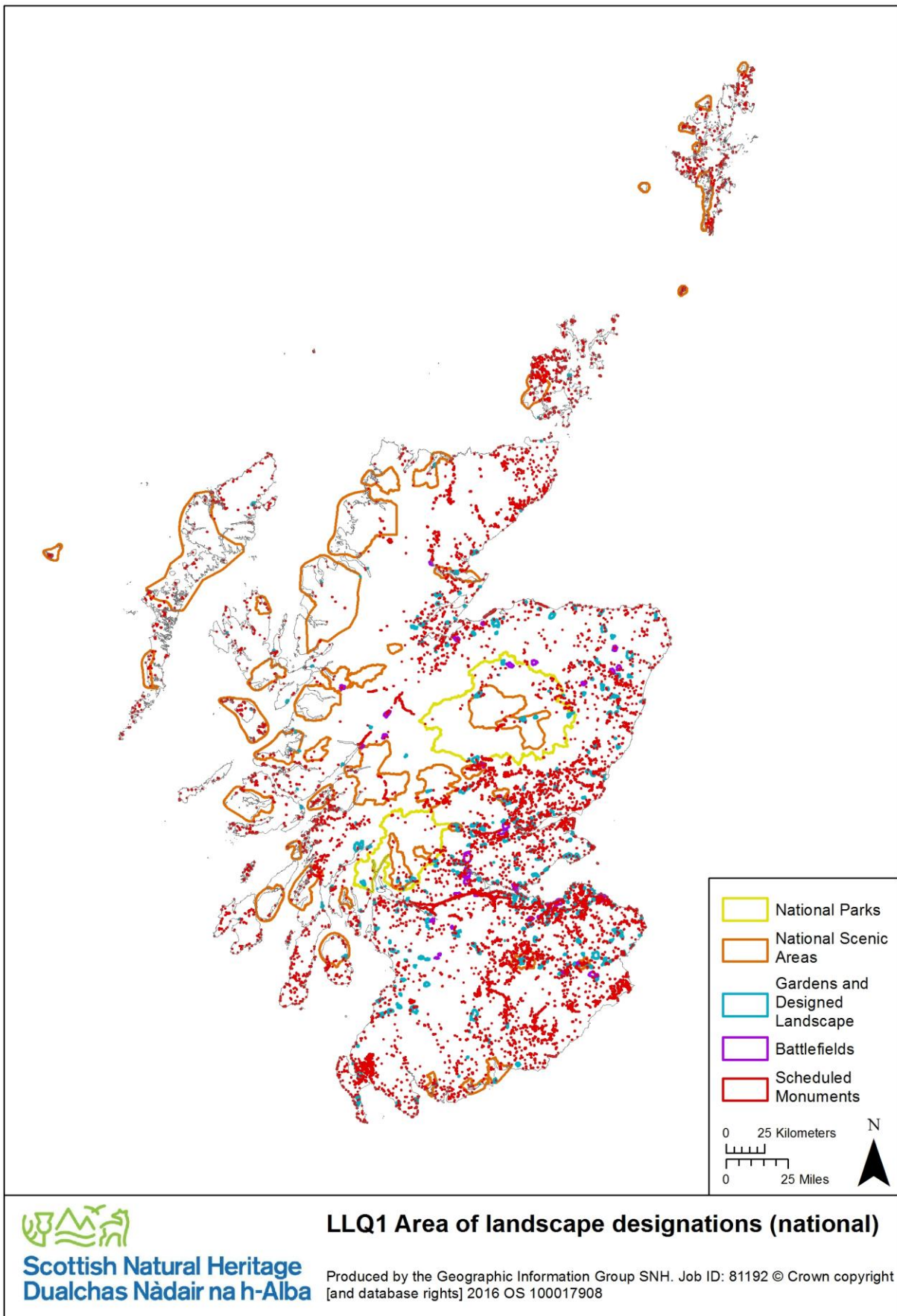
References

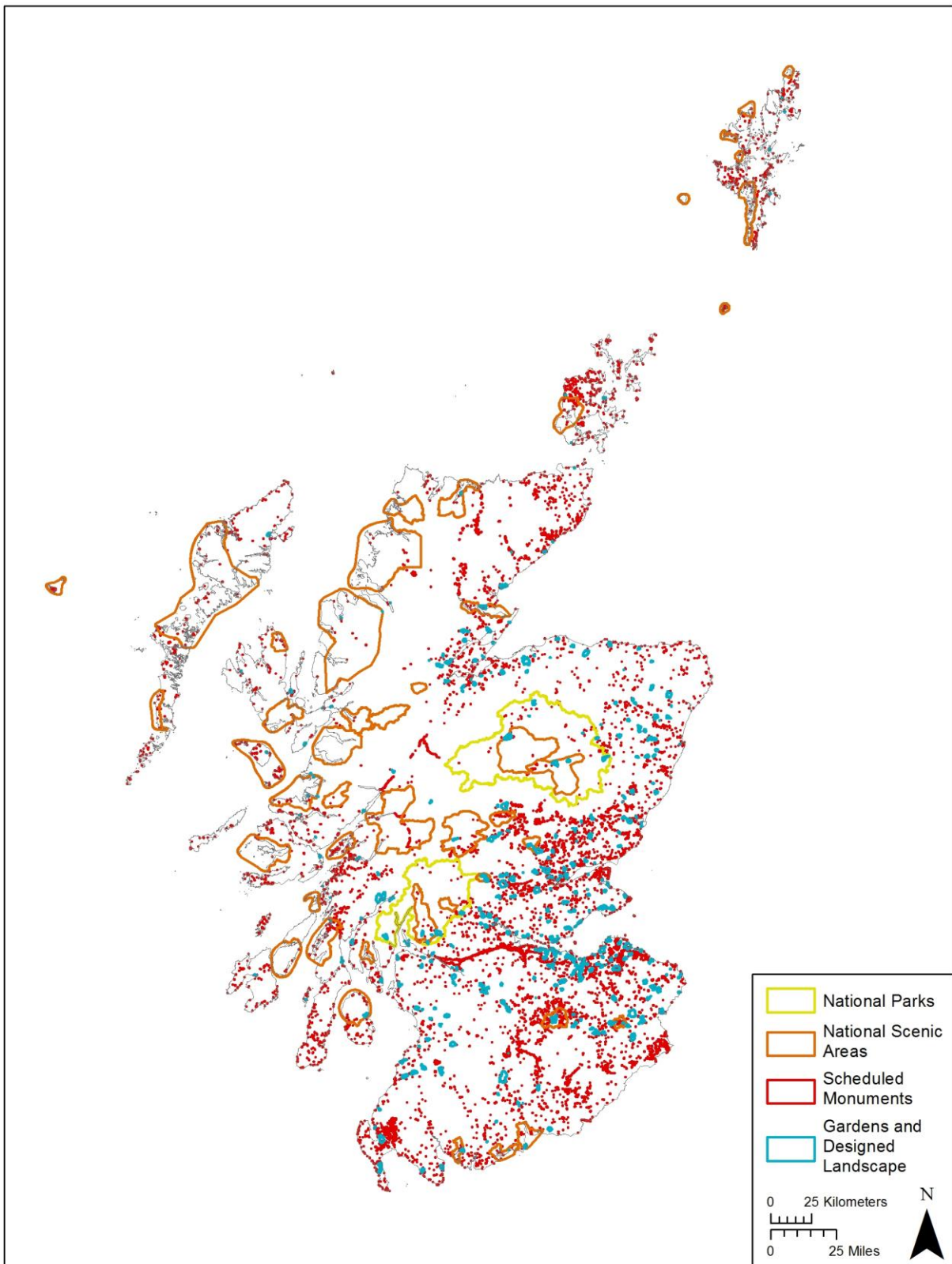
Scottish Natural Heritage SNH, National Scenic Areas and National Parks
<http://www.snh.gov.uk/protecting-scotlands-nature/protected-areas/national-designations/>
Historic Environment Scotland HES, Gardens and Designed Landscapes, Battlefield Inventory, Scheduled Monuments, World Heritage Sites
<https://www.historicenvironment.scot/advice-and-support/listing-scheduling-and-designations/>



©Crown copyright and database rights (2016). Ordnance Survey 100017908.







Scottish Natural Heritage
Dualchas Nàdair na h-Alba

LLQ1 Area of landscape designations (national) 2006

Produced by the Geographic Information Group SNH. Job ID: 81192 © Crown copyright [and database rights] 2016 OS 100017908

