



---

**FOR IMMEDIATE RELEASE**

June 17, 2022

**Contact:**

Mathew Barewicz, E & LMI Director  
Vermont Department of Labor  
[Mathew.Barewicz@vermont.gov](mailto:Mathew.Barewicz@vermont.gov)  
802-828-4153

## **Vermont's Unemployment Rate Decreased to 2.3 Percent in May**

Today, the Vermont Department of Labor released data on the Vermont economy for the time period covering May 2022. According to household data, the seasonally-adjusted statewide unemployment rate for May was 2.3 percent. This reflects a decrease of two-tenths of one percentage point from the prior month's revised estimate. The civilian labor force participation rate rose to 61.5 percent in May.

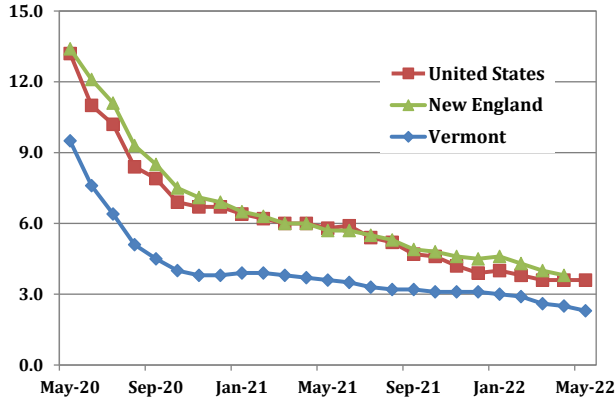
### ***Commissioner's Message***

"This month's household data shows continued decline in the number of unemployed Vermonters which highlights the challenge many employers face in finding workers. Vermont is not the only state in this position, as national data shows record low unemployment and record high job availability across the entire country. As employers know, today's market requires active recruitment in order to find the talent needed to meet the demand for products and services. With a three to one ratio of vacant positions to unemployed Vermonters, employers must use every tool available to them to locate and attract jobseekers. The employers who are successful in this effort will be those who come at the problem with an open mind and who are willing to try things never been done before. To assist in this effort, the Department of Labor's Workforce Development team is ready and available to provide one-on-one consultation to both employers and jobseekers alike. If you have not already visited [VermontJobLink.com](https://VermontJobLink.com) to post or apply for a job, make sure you take that next step, and for more information about other workforce services visit [Labor.Vermont.gov/Jobs](https://Labor.Vermont.gov/Jobs)."

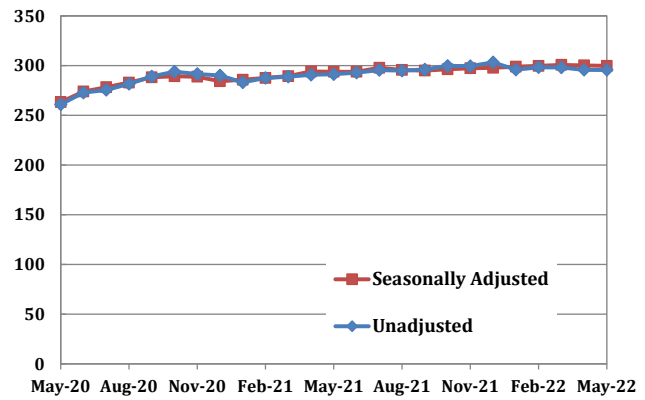
- Michael Harrington, Commissioner



**Chart 1. Unemployment Rate, seasonally adjusted**  
Percent



**Chart 2. Vermont Nonfarm Payroll Employment**  
Thousands



### State of Vermont Overview

The Vermont seasonally-adjusted unemployment rate declined to 2.3 percent in May. The comparable United States rate in May was 3.6 percent, which experienced no change from the revised April estimate. The seasonally-adjusted Vermont data for May show the Vermont civilian labor force increased by 829 from the prior month's revised estimate (see Table 1). The number of employed persons increased by 1,477 and the number of unemployed persons decreased by 648. The changes to the number of employed, the number of unemployed and the unemployment rate were statistically significant in the seasonally-adjusted series.

The May unemployment rates for Vermont's 17 labor market areas ranged from 1.6 percent in White River Junction to 3.4 percent in Derby (note: local labor market area unemployment rates are not seasonally-adjusted – see Table 2). For comparison, the May unadjusted unemployment rate for Vermont was 2.1 percent, a decrease of three-tenths of one percentage point from the revised unadjusted April level and a decrease of one and two-tenths percentage points from a year ago.

### Analysis of Job Changes by Industry

#### Seasonally-Adjusted (Table 3)

The seasonally-adjusted data for May reported a decrease of 500 jobs from the revised April data. There was a decrease of 600 jobs between the preliminary and the revised April estimates due to the inclusion of more data. The seasonally-adjusted over-the-month changes in May were varied at the industry level. Those with a notable increase included: Private Educational Services (+700 jobs or +6.2%) and Other Services (+300 jobs or +2.9%). Industries with a notable decrease included: Administrative & Waste Services (-600 jobs or -4.8%) and Federal Government (-200 jobs or -2.9%).



**Not-Seasonally-Adjusted** (Table 4)

The preliminary 'not-seasonally-adjusted' jobs estimates for May showed a decrease of 100 jobs when compared to the revised April numbers. As with the 'seasonally-adjusted' data, this over-the-month change is from the revised April numbers which experienced an increase of 200 jobs from the preliminary estimates. The broader economic picture can be seen by focusing on the over-the-year changes in this data series. As detailed in the preliminary 'not-seasonally-adjusted' May data, Total Private industries increased by 4,900 jobs (+2.1%) over the year and Government (including public education) employment has decreased by 600 jobs (-1.1%) in the past year.

---

**The Unemployment and Jobs Report for June is scheduled to be released on Friday, July 22nd, 2022 at 10:00 a.m.**



**Table 1. Vermont Labor Force Estimates, seasonally adjusted**

	May 2022	April 2022	May 2021	Change From:	
				April 2022	May 2021
Civilian Labor Force	333,575	332,746	328,514	829	5,061
Employed	326,015	324,538	316,717	1,477	9,298
Unemployed	7,560	8,208	11,797	-648	-4,237
Unemployment Rate (%)	2.3	2.5	3.6	-0.2	-1.3

Vermont's labor force, employment and unemployment statistics are produced from a combination of a Statewide survey of households and statistical modeling. The data are produced by the Local Area Unemployment Statistics Program (LAUS), a cooperative program with the U.S. Department of Labor, Bureau of Labor Statistics ([www.bls.gov/lau](http://www.bls.gov/lau)) and the Vermont Department of Labor ([www.vtmi.info/lau.cfm](http://www.vtmi.info/lau.cfm)).

**Table 2. Vermont Labor Market Areas, Labor Force Estimates**  
 not seasonally adjusted

Labor Market Area <sup>1</sup>	Civilian Labor Force	May 2022		Unemployment Rate <sup>2</sup> (%)		
		Employed	Unemployed	May-22	Apr-22	May-21
Vermont Total	331,358	324,239	7,119	2.1	2.4	3.3
Barre-Montpelier	24,534	24,065	469	1.9	2.2	2.8
Bennington	10,414	10,121	293	2.8	3.1	4.5
Brattleboro	19,485	18,967	518	2.7	2.9	4.5
Burlington-South Burlington	123,594	121,450	2,144	1.7	1.9	2.8
Derby	12,051	11,647	404	3.4	4.3	4.3
Highgate	10,246	10,024	222	2.2	2.4	3.3
Manchester	10,422	10,120	302	2.9	3.1	3.7
Middlebury	18,659	18,302	357	1.9	2.1	2.7
Morristown-Waterbury	17,034	16,558	476	2.8	3.2	3.8
Newbury	2,677	2,618	59	2.2	2.3	3.7
Northfield-Waitsfield	6,675	6,526	149	2.2	2.1	3.2
Randolph	6,850	6,710	140	2.0	2.4	3.3
Rutland	19,319	18,779	540	2.8	2.9	3.9
Springfield	10,082	9,836	246	2.4	2.3	3.8
St. Johnsbury	13,158	12,846	312	2.4	2.8	3.5
White River Junction	19,613	19,305	308	1.6	1.9	3.3
Woodstock	3,465	3,363	102	2.9	2.7	4.5

<sup>1</sup>The area names above are common language titles; for official names of areas including encompassing cities and towns please refer to the Vermont Labor Market Area map (<http://www.vtmi.info/lmadef2015.pdf>).

<sup>2</sup>Rate is an estimate for number of unemployed divided by total labor force, expressed as a percent.

Source: Local Area Unemployment Statistics Program (LAUS) produced by the Vermont Department of Labor ([www.vtmi.info/lau.cfm](http://www.vtmi.info/lau.cfm)) in cooperation with the U.S. Bureau of Labor Statistics ([www.bls.gov/lau](http://www.bls.gov/lau)).



**Table 3. Vermont Nonfarm Payroll Employment, seasonally adjusted (thousands)**

NAICS Industry	May-22	Apr-22	May-21	Change From:		% Change From:	
	Prelim	Revised	Revised	Apr-22	May-21	Apr-22	May-21
<b>Statewide, Total Nonfarm</b>	<b>299.7</b>	<b>300.2</b>	<b>293.8</b>	<b>-0.5</b>	<b>5.9</b>	<b>-0.2</b>	<b>2.0</b>
<b>Total Private</b>	<b>247.0</b>	<b>247.4</b>	<b>241.7</b>	<b>-0.4</b>	<b>5.3</b>	<b>-0.2</b>	<b>2.2</b>
Mining, Logging and Construction	16.2	16.5	16.2	-0.3	0.0	-1.8	0.0
Mining & Logging	0.9	0.8	0.8	0.1	0.1	12.5	12.5
Construction	15.3	15.7	15.4	-0.4	-0.1	-2.5	-0.6
Manufacturing	29.3	29.0	28.6	0.3	0.7	1.0	2.4
Durable Goods	17.9	17.8	17.3	0.1	0.6	0.6	3.5
Non-Durable Goods	11.4	11.2	11.3	0.2	0.1	1.8	0.9
Trade, Transportation and Utilities	50.5	51.1	51.4	-0.6	-0.9	-1.2	-1.8
Wholesale Trade	8.7	8.9	8.6	-0.2	0.1	-2.2	1.2
Retail Trade	33.9	34.2	34.9	-0.3	-1.0	-0.9	-2.9
Trans., Warehousing & Utilities	7.9	8.0	7.9	-0.1	0.0	-1.3	0.0
Information	4.2	4.1	4.0	0.1	0.2	2.4	5.0
Financial Activities	11.9	11.8	11.8	0.1	0.1	0.8	0.8
Finance & Insurance	8.8	8.7	8.9	0.1	-0.1	1.1	-1.1
Real Estate, Rental & Leasing	3.1	3.1	2.9	0.0	0.2	0.0	6.9
Professional and Business Services	29.8	30.2	29.8	-0.4	0.0	-1.3	0.0
Professional & Technical Services	15.9	15.8	15.8	0.1	0.1	0.6	0.6
Administrative & Waste Services	11.8	12.4	12.0	-0.6	-0.2	-4.8	-1.7
Education and Health Services	61.0	60.5	60.5	0.5	0.5	0.8	0.8
Private Educational Services	12.0	11.3	11.1	0.7	0.9	6.2	8.1
Health Care & Social Assistance	49.0	49.2	49.4	-0.2	-0.4	-0.4	-0.8
Leisure and Hospitality	33.6	34.0	30.0	-0.4	3.6	-1.2	12.0
Arts, Entertainment & Recreation	4.5	4.5	3.6	0.0	0.9	0.0	25.0
Accommodation & Food Services	29.1	29.5	26.4	-0.4	2.7	-1.4	10.2
Other Services	10.5	10.2	9.4	0.3	1.1	2.9	11.7
<b>Government</b>	<b>52.7</b>	<b>52.8</b>	<b>52.1</b>	<b>-0.1</b>	<b>0.6</b>	<b>-0.2</b>	<b>1.2</b>
Federal	6.7	6.9	6.9	-0.2	-0.2	-2.9	-2.9
State	17.7	17.7	17.4	0.0	0.3	0.0	1.7
Local	28.3	28.2	27.8	0.1	0.5	0.4	1.8
<b>Burlington-S. Burlington Metro (NECTA)</b>	<b>120.3</b>	<b>121.0</b>	<b>118.7</b>	<b>-0.7</b>	<b>1.6</b>	<b>-0.6</b>	<b>1.3</b>
<b>Total Nonfarm</b>	<b>120.3</b>	<b>121.0</b>	<b>118.7</b>	<b>-0.7</b>	<b>1.6</b>	<b>-0.6</b>	<b>1.3</b>

Source: Current Employment Statistics Program (CES) produced by the Economic and Labor Market Information Division, Vermont Department of Labor ([www.vtmi.info/ces.cfm](http://www.vtmi.info/ces.cfm)) in cooperation with the U.S. Bureau of Labor Statistics ([www.bls.gov/sae](http://www.bls.gov/sae)).

Estimates are preliminary and subject to revision. See Annual Summary for details.



**Table 4. Vermont Nonfarm Payroll Employment, not seasonally adjusted**

NAICS Industry	May-22	Apr-22	May-21	Change From:		% Change From:	
	Prelim	Revised	Revised	Apr-22	May-21	Apr-22	May-21
<b>TOTAL NONFARM</b>	<b>295,600</b>	<b>295,700</b>	<b>291,300</b>	<b>-100</b>	<b>4,300</b>	<b>0.0</b>	<b>1.5</b>
<b>TOTAL PRIVATE</b>	<b>243,200</b>	<b>241,300</b>	<b>238,300</b>	<b>1,900</b>	<b>4,900</b>	<b>0.8</b>	<b>2.1</b>
<b>GOODS-PRODUCING</b>	<b>45,900</b>	<b>44,400</b>	<b>44,900</b>	<b>1,500</b>	<b>1,000</b>	<b>3.4</b>	<b>2.2</b>
MINING, LOGGING AND CONSTRUCTION	16,600	15,400	16,400	1,200	200	7.8	1.2
Mining & Logging	900	800	800	100	100	12.5	12.5
Construction	15,700	14,600	15,600	1,100	100	7.5	0.6
MANUFACTURING	29,300	29,000	28,500	300	800	1.0	2.8
Durable Goods	17,900	17,800	17,300	100	600	0.6	3.5
Non-Durable Goods	11,400	11,200	11,200	200	200	1.8	1.8
Food Mfg.	5,200	5,100	5,400	100	-200	2.0	-3.7
<b>SERVICE-PROVIDING</b>	<b>249,700</b>	<b>251,300</b>	<b>246,400</b>	<b>-1,600</b>	<b>3,300</b>	<b>-0.6</b>	<b>1.3</b>
TRADE, TRANSPORTATION AND UTILITIES	50,300	50,500	51,300	-200	-1,000	-0.4	-1.9
Wholesale Trade	8,700	8,800	8,600	-100	100	-1.1	1.2
Retail Trade	33,800	33,900	34,800	-100	-1,000	-0.3	-2.9
Food & Beverage Stores	9,200	9,300	9,700	-100	-500	-1.1	-5.2
General Merchandise Stores	3,200	3,300	3,100	-100	100	-3.0	3.2
Transportation, Warehousing & Utilities	7,800	7,800	7,900	0	-100	0.0	-1.3
Transportation & Warehousing	6,600	6,600	6,700	0	-100	0.0	-1.5
Utilities	1,200	1,200	1,200	0	0	0.0	0.0
INFORMATION	4,200	4,100	4,000	100	200	2.4	5.0
FINANCIAL ACTIVITIES	11,900	11,700	11,800	200	100	1.7	0.8
Finance & Insurance	8,800	8,700	8,900	100	-100	1.1	-1.1
Real Estate, Rental & Leasing	3,100	3,000	2,900	100	200	3.3	6.9
PROFESSIONAL AND BUSINESS SERVICES	30,000	29,700	30,000	300	0	1.0	0.0
Professional & Technical Services	15,900	15,800	15,800	100	100	0.6	0.6
Administrative & Waste Services	12,000	12,000	12,200	0	-200	0.0	-1.6
EDUCATION AND HEALTH SERVICES	60,900	61,400	60,700	-500	200	-0.8	0.3
Educational Services	11,800	12,200	11,300	-400	500	-3.3	4.4
Colleges and Universities	7,400	7,800	6,700	-400	700	-5.1	10.4
Health Care & Social Assistance	49,100	49,200	49,400	-100	-300	-0.2	-0.6
Ambulatory Health Care Services	16,400	16,400	16,800	0	-400	0.0	-2.4
Hospitals	14,100	14,200	13,900	-100	200	-0.7	1.4
Nursing & Residential Care Facilities	6,400	6,400	6,900	0	-500	0.0	-7.2
Social Assistance	12,200	12,200	11,800	0	400	0.0	3.4
LEISURE AND HOSPITALITY	29,600	29,300	26,200	300	3,400	1.0	13.0
Arts, Entertainment & Recreation	4,400	3,700	3,500	700	900	18.9	25.7
Accommodation & Food Services	25,200	25,600	22,700	-400	2,500	-1.6	11.0
Accommodation	7,400	8,000	6,200	-600	1,200	-7.5	19.4
Hotels & Motels	6,400	7,400	5,300	-1,000	1,100	-13.5	20.8
Food Services & Drinking Places	17,800	17,600	16,500	200	1,300	1.1	7.9
OTHER SERVICES	10,400	10,200	9,400	200	1,000	2.0	10.6
<b>GOVERNMENT</b>	<b>52,400</b>	<b>54,400</b>	<b>53,000</b>	<b>-2,000</b>	<b>-600</b>	<b>-3.7</b>	<b>-1.1</b>
Federal Government	6,700	6,900	6,900	-200	-200	-2.9	-2.9
State Government Education	7,400	9,400	8,200	-2,000	-800	-21.3	-9.8
Other State Government	9,400	9,200	9,100	200	300	2.2	3.3
Local Government Education	21,600	21,500	21,500	100	100	0.5	0.5
Other Local Government	7,300	7,400	7,300	-100	0	-1.4	0.0

Source: Current Employment Statistics Program (CES) produced by the Economic and Labor Market Information Division, Vermont Department of Labor ([www.vtmi.info/ces.cfm](http://www.vtmi.info/ces.cfm)) in cooperation with the U.S. Bureau of Labor Statistics ([www.bls.gov/sae](http://www.bls.gov/sae)).

Estimates are preliminary and subject to revision. See Annual Summary for details.

###

